

# Connecting Threads

Handweavers Guild of Boise Valley

September, 2010

## Calendar of Events

August 28, 2010 - Board Meeting  
Moxie Java, 1122 S. Vista, Boise  
9:30 to 11:00 am  
All are welcome!

August 28, 2010 - Guild Meeting -  
Boise Historical Museum at the  
Adelmann House  
11:30 am - Business Meeting  
12 noon - Social time  
1:00 p.m. Program - Indigo Dyeing,  
by Cece Stricklin

September 9, 2010 - Spinning Study  
Group  
Maralyn Larson's Clubhouse  
6:30 - 8:30pm

September 20, 2010 - Day Weaving Study  
Group  
Rebecca Winter's Studio  
1012 East Third Street, Meridian  
1:00 pm

September 25, 2010 - Museum Comes to  
Life - Guild Show and Challenge:

October 2, 2010 - COE Study Group  
Moxie Java, 1122 S. Vista, Boise  
9:30 to 11:00 am  
All are welcome!

## August/September Program: Indigo Dyeing

To start off the year we have Cece Stricklin on August 28th giving us the scoop and a short demo on Indigo dyeing. Ce Ce is one of our very own dyeing experts willing to share her knowledge with us.



## Ramblings of the President

Hello Weavers and Spinners:

I hope that you have had a nice, relaxing summer, and hopefully you found some time for weaving, spinning, or working with fiber. Our vice-presidents have been busy putting together a great schedule of programs for the year and I am looking forward to learning from our instructors and all of you. One of the things that I really appreciate about our guild is the fact that we all share a common interest -- fiber -- and yet we all come to the craft from a different perspective and a different background. I always learn something new at a meeting, and I really enjoy taking a few hours each month to hang out with other weavers, spinners and fiber enthusiasts.

I hope to see you soon,

◆ Cynthia Newman



## Dues are Due

Guild dues are due in June of each year. So they are due now. Individual membership is \$25.00 per year. Bring them to the August meeting or contact Penny Schraufnagel, Membership Officer, for more information, at 342-1288.

## The Challenge for Museum Comes to Life

### ◆ ◆ ◆ ◆ ◆ **Thick & Thin** ◆ ◆ ◆ ◆ ◆

I hope everyone has been working on their Thick & Thin entries for the Challenge this summer. All entries must be made from a combination of thick and thin. The information sheet for this year's challenge can be found on our website at:

<http://www.handweavers-guild-boise.org/documents/ChallengeInfo2010.pdf>

and the entry form is on page 3 in this Newsletter and available at:

<http://www.handweavers-guild-boise.org/documents/ChallengeSignUp2010.pdf>

Please remember **volunteers are needed** to be at Museum Comes to life to make it a success. There will be a volunteer sign up sheet at the August meeting. The event is September 25th from about 9:00am to 5:00pm and we need people to hand out ballots for the Challenge, weave on the rug loom we will have set up, and to talk to visitors in the area we will have other woven items that don't fit the Challenge categories. Our spinners can find a spot and demonstrate spinning.

The Historical Museum requests all volunteers be in "period costumes." A long skirt, blouse, and a shawl works well for our area.

In addition to the Challenge, we will have an area to display handwovens or handspuns that do not fit the Challenge guide lines. Please get all Challenge and Show entries to Vila by September 20th.

If you will not be at the August meeting and would like to volunteer, please contact Vila Cox [vila@icehouse.net](mailto:vila@icehouse.net) to be added to the list. This is a big event for the Guild and we want it to be a success. Help is also needed to set the display up on September 24th at 1:00pm . ◆ Vila



# Thick & Thin - Challenge 2010

For the 2010 Challenge we are going to mix things up a bit, that is, mix up the yarns you choose for your weaving projects. Each woven entry must use an obvious combination of thick and thin yarns. The thick and thin yarns need to stand out as part of the design process. So let's step out of the uniform world and try something new.

It's time to quit trying for the perfectly even yarn. Handspun entries need to be slubby or have a thick and thin element of some kind. So try a new technique or spin up an old favorite that will be lumpy, bumpy, and oh so unique.

Some weave structures are traditionally woven with thick and thin yarns. What new ideas will you come up with for our Challenge this year? It is a great time to try something new and push the limits of tradition.

All entries must be an obvious mixture of thick and thin and must be entirely your own work, finished since last September.



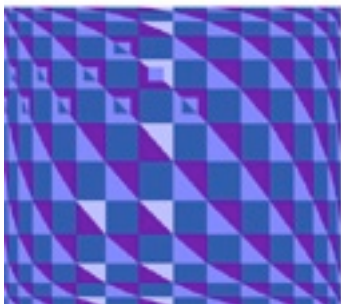
There will be four categories for prizes:

1. Flat handwoven items - includes yardage and hemmed or fringed pieces (scarves, towels and rugs). A mixture of thick and thin threads must be obvious in each handwoven item.
2. Handspun skeins - must be obviously thick and thin, or a thick strand plied with a thin strand.
3. Finished items from handspun yarn - must be made from handspun yarn that would qualify as a handspun skein this year or a combination of thick and thin handspun yarns.
4. Fiber Arts - non-flat handwoven fabrics (including clothing) or 3-dimensional items, and must be made of at least 50% fabric or handspun that would qualify in their respective categories this year.



Prizes for each category: \$50 First Place - \$35 Second Place - \$15 Third Place  
Registration is due by Saturday, August 28th ~~~ Finished items are due by September 20th  
Museum Comes to Life is September 25th

Entry Fees are \$5.00 for the first entry, \$2.00 each for the second and third entry (a maximum of \$9.00). Any additional entries from the same person are free. Enter as many pieces as you wish.



### "Through Thick and Thin"

**Meaning:** Through all forms of obstacle that are put in one's way.

**Origin:** 'Through thick and thin' is one of the English language's older expressions. It is venerable enough to date from the times when England was still a predominantly wooded country, with few roads and where animals grazed on what was known as wood pasture, i.e. mixed woodland and grass. The phrase originated as "through thicket and thin wood."

<http://www.phrases.org.uk/meanings/through-thick-and-thin.html>



Entry Form:

Name: \_\_\_\_\_ Telephone Number: \_\_\_\_\_

Address: \_\_\_\_\_

email: \_\_\_\_\_

Category: \_\_\_\_\_

Description of Piece: \_\_\_\_\_

Fee Enclosed: \_\_\_\_\_

Submit form and entries to: Vila Cox 2668 N Westminster Pl Boise ID 83704 323-7736



## News From the Vice Presidents

We have been working on gathering many different and interesting (we hope) programs for the upcoming year. The following is a list:

- August/September -- Indigo Dyeing
- October -- Warping Demonstrations
- November -- Edge Finishing
- December -- Annual Potluck Luncheon and Holiday Card Exchange.
- January 2011 -- Fiber Preparation Using Hand Cards
- February -- Sewing Machine Maintenance
- March -- Ikat
- April -- Fiber Animal Show
- May -- Annual Yarn and Equipment Sale
- June -- Annual Picnic

## Guild Meeting Minutes

June 5, 2010

The meeting was called to order by Vice President Katy McGowen.

ATTENDANCE: Rebecca Winter, Janet Stanger, Vila Cox, Mary Berent, Lynn Ruggles, Kathy McGowen, Ivy Dehart, Katrina Duckett, Irene Chandler, Rena Lute, Carolyn Dade, Mitzi Meyers, Penny Schraufnagel, Carol Freeman, Cynthia Newman, Julie Gerrard, Pat Ann, Jean Zaske, Ava Lutteman.

CORRESPONDENCE: None presented.

TREASURER'S REPORT: Irene Chandler reported that she did not bring the bank statement so it was not an official report, but the amounts are just about the same as she reported before.

CHALLENGE: Vila reminded the group about this year's up and coming Challenge -- September 25<sup>th</sup> at the Museum comes to life event. The Theme is Thick and Thin. You must be able to look at it and see a thick and thin yarn or thread.

Vila has the sign up for volunteers to help at the event. It is cash awards given for prizes. The cost of the event is \$5.00 for the first Item and \$2.00 for each additional item, up to a total of \$9.00. Registration is due August 28<sup>th</sup> and the finished Item is due September 20<sup>th</sup>. Some of the categories are Hand Woven Flat, Hand Spun, Items made from Hand Spun and Fiber Arts. Registration forms can be found on line and in the newsletter. We are to dress in period clothing.

Rebecca explained the sample box. She is keeping the older samples in the back of the box and anyone may take these at any time. Be sure to get your more recent samples and sign for them. She has sample record cards and a sign up sheet for volunteering to bring a sample as well.

The next guild meeting will be August 28<sup>th</sup> at the Adelman House at the Historical Museum.

The COE Study Group next meeting will be July 3<sup>rd</sup> at the Moxie Java at Kootenai and Vista.

Lynn reminded everyone about spinning at the fair the end of August. She will email reminders. The Spinning Group is having a meeting on June 26<sup>th</sup> and their July meeting will be held at Judy Banducci's.

Penny reminds the guild that the membership dues are due. It is \$25.00.

Pat Ann reports that the Library is in a state of transition. She is leaving the coordination to the new Librarian. Pat has added several good books to our Library this past year.

Mitzi Meyers brought items to sell, that were left over from the Shirley Sterling and club sale.

It was reported that Cece is willing to do the indigo dying at the August meeting.

GOLD BAG: Pat Ann brought the gold bag filled with a variety of spools of yarn. The bag was won by Jean Zaske.

ROBYN SPADY WORKSHOP: This is a 3 day work shop in March. Her suggested topics are Extreme Warp Makeover, The Fab 4, There Are 2 Sides to Every Cloth, and Pictures, Piles, Potpourri and Perplexing Curiosities. The Guild members decided on "There Are 2 sides to Every Cloth."



SHOW & TELL:

Rena Lute brought a rug of wool and cotton mix.

Carolyn brought 3 rag rugs.

Irene brought 1 cotton rug and 1 rag rug.

Ava shared a brightly colored rose path rug, which is going to go to one of her Grandchildren for a dorm room.

Lynn showed us some Shelton Lace.

Rebecca made bags. She had several samples to show us.

Mary showed us some towels. She reported that she had written an article on how to use pearl cotton for Handwoven Magazine. She is learning how to crochet and showed a granny square sample. Mary had also brought the Henry's Attic Box which had several items for sale.

Julie shared a 2 block twill sample.

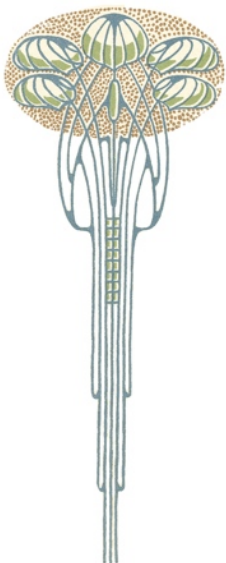
Vila shared Bead Leno.

Penny made a baby blanket.

Jean Zaske went to a Padre Baseball game with her boy friend and came home with a fiance'. He had arranged for the big billboard sign to ask her to marry him and when the sign came up he put the ring on her finger. Besides showing off a very nice engagement ring she also brought 2 towels that she had woven.

Kathy bought a bag of Shirley's miscellaneous wool and spun a beautiful multi colored yarn.

◆ Respectfully Submitted, Janet Stanger, Secretary



Announcing Our  
Holiday Card  
Exchange

In conjunction with our December Potluck Luncheon we will have Holiday Card Exchange. Your card must include or be made with Handspun yarn, Handknit or Handwoven fabric.

There is a great publication by Eleanor Best at <http://www.weavingindiana.org/library> called "Handwoven Greeting Card Collection,"

that gives a multitude of wonderful ideas for Holiday Cards. Let your imagination run with this opportunity for sharing!

~ Advertisement ~



*Her Spirit is a  
business  
cooperative center*

*dedicated to enriching the lives of all  
women by developing, providing and  
promoting a climate of respect, trust and support  
through consulting, healing, training and networking  
opportunities.*

*Pioneer Square, 5181 Overland, Boise, Id 83705  
Phone 208 345-3588, Email: [info@herspirit.net](mailto:info@herspirit.net)*



Monthly Sample Exchange

For the August 28th meeting we do not have a new sample to share. ☹ The following is a list of people who have signed up to provide samples for the rest of this year. There are a couple of openings, so please let Rebecca know if you would like to participate. The month listed is the month they are due:

- August/September - Al Hayden
- October - **Volunteer Needed**
- November - Vila Cox
- December - **Volunteer Needed**
- January - **Volunteer Needed**
- February - Cindy Schafer
- March - Cynthia Newman
- April - Julie Gerrard
- May - Irene Chandler
- June - Janet Stanger

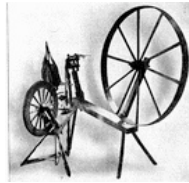


Remember to pull your samples from the Sample Exchange Box at each regular Guild meeting. And remember to check your name off the list in each file folder. If you would like participate or have questions, contact the Sample Chair, Rebecca Winter.

## Study Group News

### ♥ Spinning Study Group

The Spinning Study Group will meet on **September 9, 2010**, from 6:30 - 8:30pm at Maralyn Larson's clubhouse in Meridian. The study subject this month is "The Effect of Twist on Randomly Arranged Fibers".



Future meetings are: October 14, "Face Off: Woolen or Worsted"; November 11, "Mixed Fibers: Cross Breeding Alpacas and Angoras"; December 9 (at Maralyn's house), "The Benefits of Blending Dark Chocolate and Merino". Hope to see you all there! For directions, contact either Maralyn (888-2650) or Lynn (375-9172).



### ♥ Day Weaving Study Group

**September 20:** We will meet at Rebecca's former home, at 1012 East Third Street, Meridian, at 1:00 pm, in her downstairs studio. We each are studying our own topics. Bring what you are working on or are intrigued by to share with the group.

Come on in through the garage people-type doorway and to the basement stairs. There is a renter that lives upstairs, so please avoid the main front door.

Call Rebecca at 859-2822, for more information.

### ♥ Certificate of Excellence (COE) Study Group

The COE study group will meet on Saturday, **October 2**, at 9:30 a.m. We will meet at the Moxie Java on the corner of Vista and Kootenai in Boise. We will meet from 9:30 am to 11:00 am. All are welcome to participate. Call Mary Berent for more info at 939-8906.



## Guild Officers and Chairs

President: Cynthia Newman (541) 523-2451

Vice-presidents: Mitzi Meyers 340-9775

Kathy McGowan 939-7215

Secretary: Janet Stanger 377-0746

Treasurer: Irene Chandler 467-4997

Membership Officer: Penny Schraufnagel  
342-1288

Librarian: Katrina Duckett 697-7040

Newsletter Editor: Rebecca Winter 859-2822

Weaving Intensive Study Group: Vila 323-7736

Spinning Study Group: Lynn Ruggles 375-9172

COE Study Group: Mary Berent 939-8906

Day Weaving Study Group: Rebecca Winter  
859-2822

Web Master: Vila Cox 323-7736

Past President: Al Hayden - 343-7300

## Website

<http://www.handweavers-guild-boise.org>

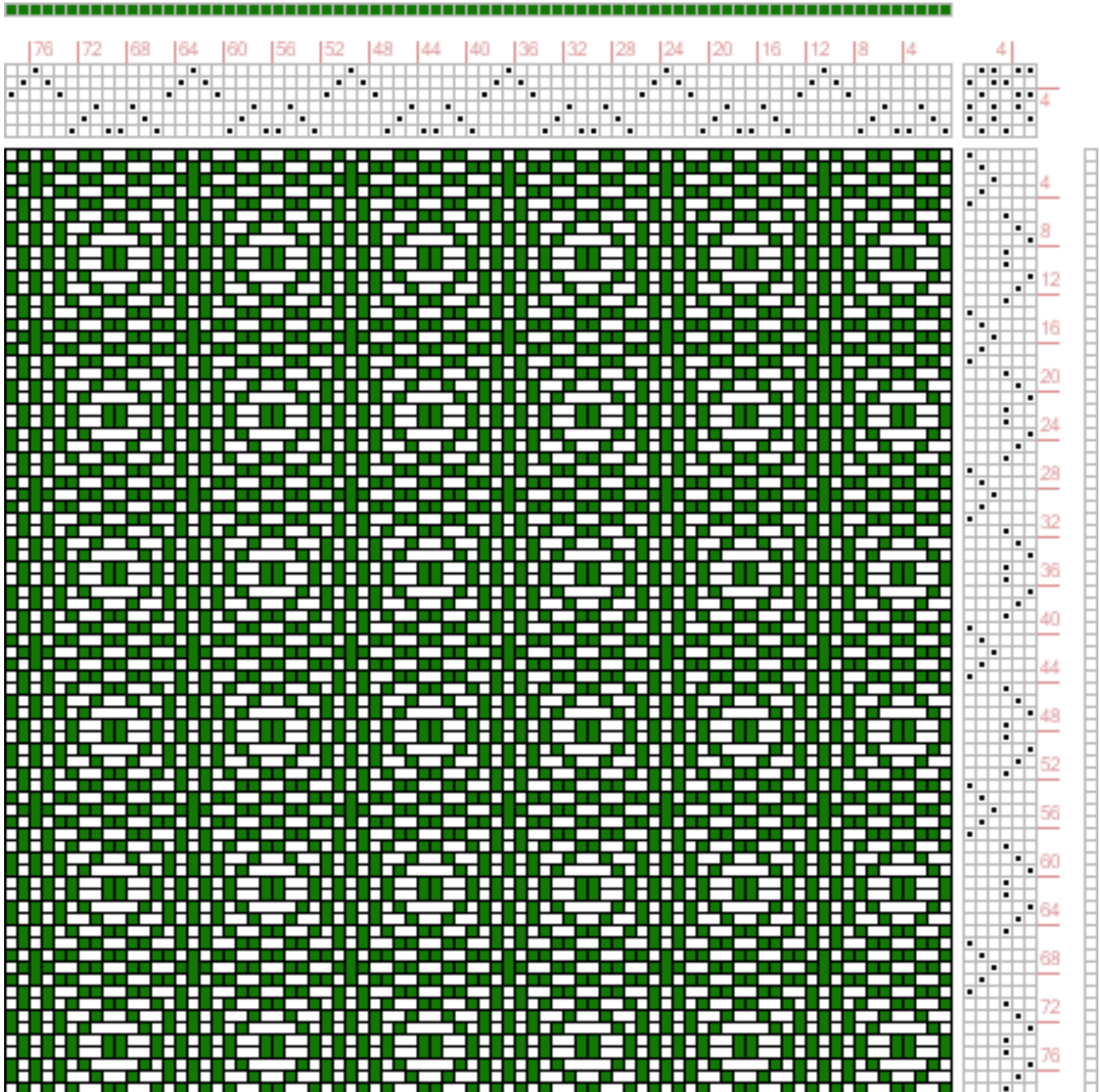


## Draft Inspirations

Here is another draft from <http://www.handweaving.net> You can go there and enter the number to see all the specifics about each draft, as well as download a .wif file. This one is from Franz Donat, Large Book of Textile Patterns, Page 205, Figure 15. Germany, ca 1895. Draft #29911.

I just love 6 harness weaves. We do not see many of them in our current publications. But to me they offer some interesting and sweet little designs. This one might have been a wonderful one for our Circles Challenge. Ahh, hindsight. Plus, it has some nice basket weave combined with twill. I am a little intrigued with that combination and would like to study it further.

◆ Your Editor



The monthly newsletter from the



handweavers guild of boise valley, inc.

### September Newsletter Highlights:

- ☀ Program: Indigo Dyeing
- ☀ Dues are due. See page 1.
- ☀ Check out this year's Challenge: See pages 2 & 3.  
Volunteer for this event,  
One of the major events of the year for our guild.
- ☀ Robyn Spady Workshop - Coming in March  
"There are Two Sides to Every Cloth"

