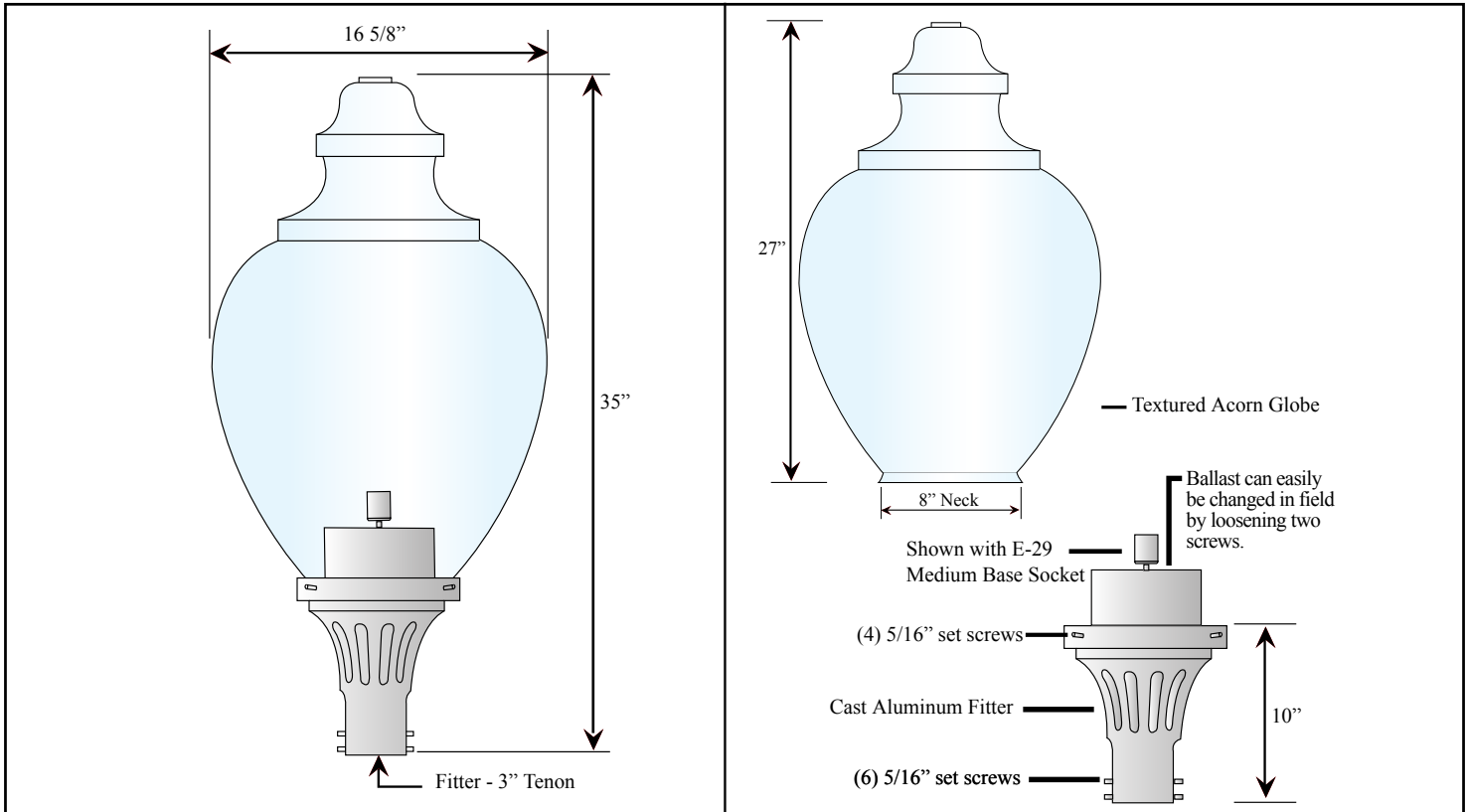


SHD1-PC1026CL

How to Order: SHD1 PC1026CL 70HPS BLK
 (Example) Fitter Globe Light Source Fitter Color



Materials:

The fixture base, which encloses the ballast is cast aluminum. All hardware is stainless steel. The textured globe will be injection molded Polycarbonate.

Finish:

The fixture will be finished with a premium quality thermoset polyester powdercoat for a durable finish.

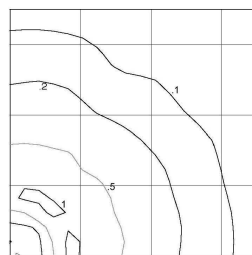
Installation:

The luminaire will mount to a 3" O/D post with 5/16" black oxide coated stainless steel set screws to ensure a solid connection.

Electrical:

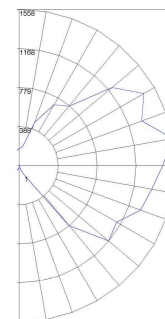
- High power factor ballast (HPF), core and coil type, pre-wired and tested
- Easy ballast pod access
- 4KV pulse rated porcelain socket
- Suitable for wet location

Standard Photometry for 100MH



SHD1-PC1026CL
 100w Metal Halide
 8,500 Lumen
 12' Mounting Height
 Grid Spacing is 12'

POLAR PLOT



Conversion Factors for Alternate Height and Lamps

New Mounting Height	Conversion Factor
8 ft.	2.25
10 ft.	1.44
14 ft.	.74

Alternate Light Source	Conversion Factor
70 HPS	.74
100 HPS	1.12
150 HPS	1.90
70 MH	.59
150 MH	1.53

High Pressure Sodium Acorn Light - 27" Polycarbonate Globe

MODEL #	DESCRIPTION:	VOLTAGE:	SOCKET
SHD1-PC1026CL-INCAN	INCANDESCENT - MAX 250 WATT	120	MEDIUM
SHD1-PC1026CL-70HPS	70 WATT HIGH PRESSURE SODIUM	120-208-240-277	MEDIUM
SHD1-PC1026CL-100HPS	100 WATT HIGH PRESSURE SODIUM	120-208-240-277	MEDIUM
SHD1-PC1026CL-150HPS	150 WATT HIGH PRESSURE SODIUM	120-208-240-277	MEDIUM

Metal Halide Acorn Light - 27" Polycarbonate Globe

MODEL #	DESCRIPTION:	VOLTAGE:	SOCKET
SHD1-PC1026CL-70MH	70 WATT METAL HALIDE	120-208-240-277	MEDIUM
SHD1-PC1026CL-100MH	100 WATT METAL HALIDE	120-208-240-277	MEDIUM
SHD1-PC1026CL-150MH	150 WATT METAL HALIDE	120-208-240-277	MEDIUM

LED Acorn Light - 27" Polycarbonate Globe

MODEL #	DESCRIPTION:	VOLTAGE:	SOCKET
SHD1-PC1026CL-LED20MOG	20 WATT LED	120	MOGUL
SHD1-PC1026CL-LED24MOG	24 WATT LED	120	MOGUL
SHD1-PC1026CL-LED30MOG	30 WATT LED	120	MOGUL
SHD1-PC1026CL-LED36MOG	36 WATT LED	120	MOGUL



1-855-537-0200
 www.forsite.us
 customerservice@forsite.us
 PO Box #51402
 Jacksonville Beach, FL 32240

****NOTE** FABRICATION TO BEGIN AFTER DRAWING HAS BEEN APPROVED, SIGNED AND FAXED OR EMAILED BACK TO FORSITE.**

Signature: _____ Date: _____