



**Annual Report of Activities**

**2011-2012**

## TABLE OF CONTENTS

NOTE FROM DIRECTOR.....	3
MISSION STATEMENT & GOALS.....	4
STATE MAP OF COOPERATIVES.....	5
ORGANIZATIONAL CHART.....	6
OFFICERS AND GOVERNING BOARD MEMBERS.....	7
TEACHER CENTER COMMITTEE.....	8
AFESC ANNUAL REPORT	
I. GOVERNANCE.....	9
II. STAFF/CERTIFIED STAFF.....	10
III. TEACHER CENTER.....	13
IV. ADMINISTRATIVE SERVICES.....	13
V. DIRECT SERVICES TO STUDENTS.....	14
VI. ANECDOTAL REPORTS.....	15
VII. EMPLOYMENT POLICIES & PRACTICES.....	17
PROGRAMS.....	18
SPECIAL PROJECTS & PROGRAMS.....	58
PROFESSIONAL DEVELOPMENT ACTIVITIES.....	62

## ***NOTE FROM DIRECTOR***

The Arch Ford Co-op staff prepared our Annual report of activities for the year 2011-12. The report is designed to report to participating school district personnel, school board members, area legislators, State Department of Education personnel, and the Governor's office, activities that the Co-op accomplished during this year.

The Arch Ford Co-op staff has attempted to report, in capsule form, a picture of the multi-faceted services and activities that it provides to member districts through a wide range of program areas. This cooperative region encompasses twenty-six school districts in seven counties. The cooperative's service area includes 47,000 students and 2,800 public school teachers and administrators.

Arkansas' education service cooperatives have grown and matured to the place where member districts rely upon their co-op for certain services. Too, legislators, Department of Education personnel, and others from state-level education related groups look to the co-ops for assistance. That is testimony to the quality and dependability of service provided over time. It is also evidence of the commitment made to enhancing the quality of the education offering for students in member districts through collegial efforts, cost savings measures, timesavings, and general program enhancement. Co-ops bring statewide efforts to the regional level, resulting in cost and timesavings for both the state and the local districts.

The Arch Ford Co-op staff is anxious to report evidence of this progress in the evaluation summaries that follow.

Phillip Young, Director

# **ARCH FORD EDUCATION SERVICE COOPERATIVE**

## **MISSION STATEMENT**

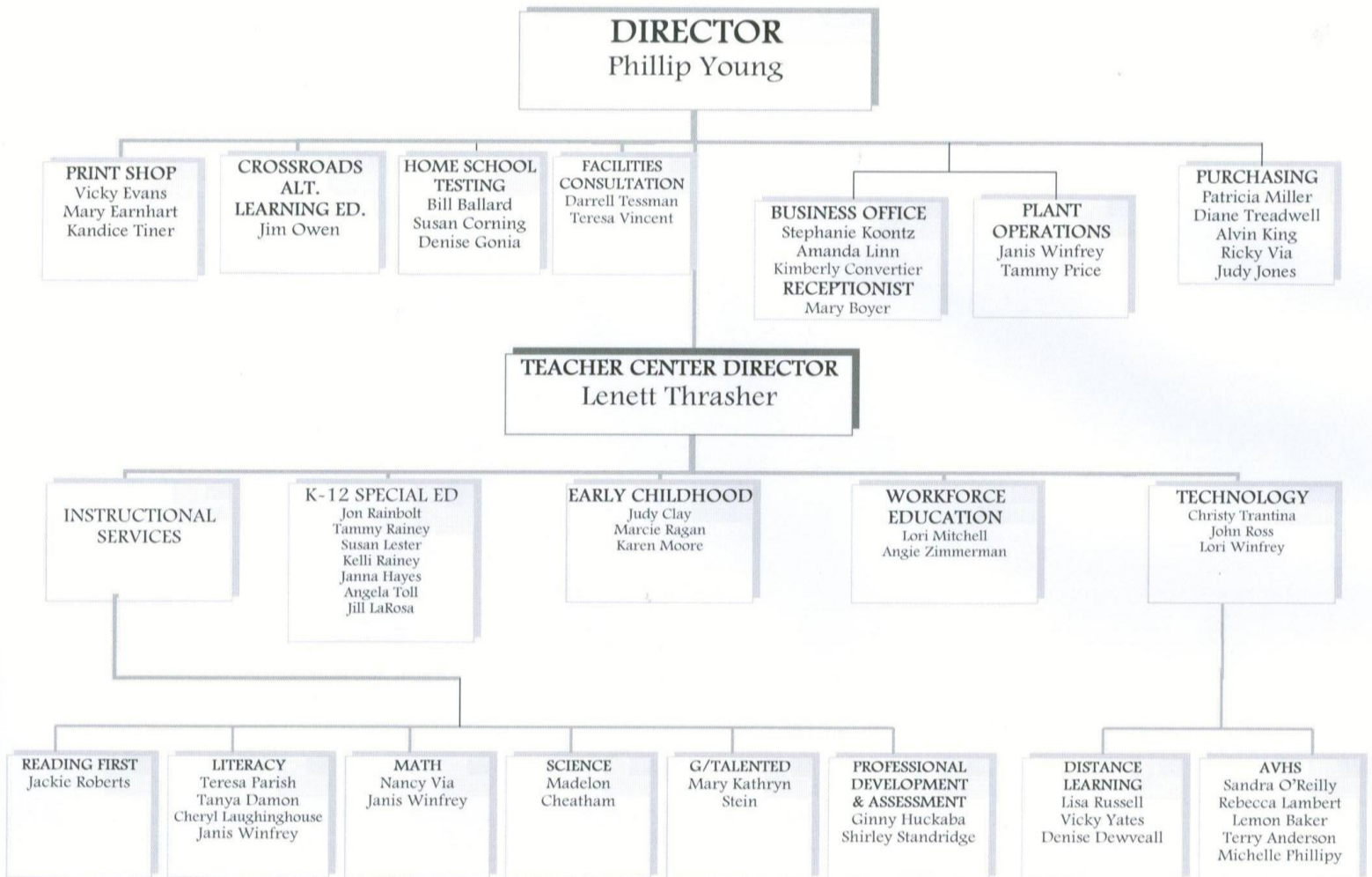
Arch Ford Education Service Cooperative is committed to and strives toward academic excellence for all students by enhancing effective teaching, developing leadership, offering technical assistance, providing extensive support, and promoting state and regional initiatives to all 26 school districts.

## **GOALS STATEMENTS**

- To ensure that all teachers in the Arch Ford Education Service Cooperative are provided opportunities for professional growth in “Best Practices” of Teaching to expand their skill base.
- To provide administrative training opportunities for instructional leadership for current and prospective administrators.
- To offer technical assistance to teachers and administrators in areas of concern. They include technology curriculum, fiscal management, behavior, safety, special education, federal programs, and crisis management.
- To partner with member schools in compliance of Act 999 to implement the accountability process.
- To support and assist our district schools in state and regional initiatives.



# ARCH FORD ESC Organizational Chart



## Officers of the Board

<b>Name</b>	<b>Position</b>	<b>School District</b>
Phillip Young	Director	Arch Ford Education Coop
Randall Williams	President	Russellville
Billy Jackson	Secretary	South Side Bee Branch

## Members of the Board

<b>Name</b>	<b>Position</b>	<b>School District</b>
Annette Henderson	Board member	South Conway County
Cody Beene	Board member	Nemo Vista
Larry Walters	Board member	Mt. Vernon-Enola
Walt Davis	Board member	Hector
Larry Dugger	Board member	Pottsville
Larry Freeman	Board member	Quitman
Dr. Eric Saunders	Board member	East End
John Gray	Board member	Mayflower
Russell Hester	Board member	Heber Springs
Ron Looper	Board member	Two Rivers
Billy Jackson	Board member	South Side Bee Branch
Mike Hernandez	Board member	Danville
Jack Robinson	Board member	West Side Greers Ferry
James MaGaha	Board member	Clinton
Betty McGruder	Board member	Shirley
Dr. Frank Mitchell	Board member	Vilonia
Dr. Greg Murry	Board member	Conway
Jerry Owens	Board member	Dover
Scott Spainhour	Board member	Greenbrier
Bradley Spikes	Board member	Western Yell County
John Thompson	Board member	Dardanelle
Carroll Purtle	Board member	Wonderview
Boyce Watkins	Board member	Atkins
David Westenhover	Board member	Guy-Perkins
Randall Williams	Board member	Russellville
Dr. Ron Wilson	Board member	Perryville

## Teacher Center Committee

Each participating school district in the Arch Ford Education Service Cooperative will have one representative on the Teacher Center Committee. The ratio of classroom teachers to administrative/support personnel shall be as close to 2:1 as is possible. Each Committee member shall be elected for a term of three years.

### Teacher Center Committee

<b>Elementary Teacher Positions</b>	<b>Name</b>	<b>District</b>	<b>Term Expires</b>
Teacher	Elizabeth Reece	Clinton	2012
Teacher	Jeanne Ortiz	Conway	2013
Teacher	Veronica Scott	Two Rivers	2013
Teacher	Melissa Rehm	Dover	2013
Teacher	Tammy Murry	Guy-Perkins	2012
<b>Middle/Jr. High Teacher Positions</b>			
Teacher	Shawn Hettinga	Danville	2014
Teacher	Sylvia Woods	Hector	2014
Teacher	Katie Riggs	Mayflower	2012
Teacher	Mike Casey	Russellville	2012
Teacher	Briannon Ogle/Pennington	South Side	2012
Teacher	Misty Ashlock	Wonderview	2013
<b>High School Teacher Position</b>			
Teacher	Jennifer Campbell	East End	2013
Teacher	Ashley Maxwell	Heber Springs	2013
Teacher	Vickey Johnson	Mt. Vernon/Enola	2014
Teacher	Renee Henry	Vilonia	2012
Teacher	Fred Rickert	West Side	2013
<b>Administrative</b>			
Administrator	Kalyn Evans	Atkins	2012
Administrator	Jamie Burris	Dardanelle	2013
Administrator	Merlina McCullough	Greenbrier	2013
Administrator	Regina Tilley	Nemo Vista	2014
Administrator	Kevin Campbell	Perryville	2014
Administrator	Melissa Cox	Pottsville	2012
Administrator	Rhonda Bradford	Quitman	2014
Administrator	Randy Roberson	Shirley	2014
Administrator	Christie Toland	South Conway Co.	2014
Administrator	Keith Jones	Western Yell	2012



## Arch Ford Education Service Cooperative (ESC) Annual Report

Date: 5/31/2012 LEA#: 15-20 ESC#: \_\_\_\_\_

ESC Name: Arch Ford Education Service Cooperative

Address: 101 Bulldog Drive Plumerville, AR 72127

Phone Number: 501.354.2269

Director: Mr. Phillip Young

Teacher Center Coord: Lenett Thrasher

Names of Counties Served: Cleburne, Conway, Faulkner, Perry, Pope, Van Buren, and Yell

Number of Districts: 26 Number of Students: 47,000

Number of Teachers: 2,800

### I. GOVERNANCE:

- A. How is the co-op governed? Board of Directors X or Executive Committee \_\_\_\_\_  
How many members on the Board? 26  
Executive Committee? 9  
How many times did the Board meet? 11  
Executive Committee? 11  
When is the regular meeting? 4<sup>TH</sup> Thursday of the month  
Date of current year's annual meeting: October 12-14, 2011
- B. Does the co-op have a Teacher Center Committee? YES X NO \_\_\_\_\_  
If yes, then:  
How many are on the Teacher Center Committee? 26  
How many members are teachers? 16  
How many times did the Teacher Center Committee meet? 3  
When is the regular meeting? November, February, May
- C. When was the most recent survey/needs assessment conducted? December 2011
- D. Have written policies been filed with the Arkansas Department of Education?  
Yes X No \_\_\_\_\_

### II. STAFFING:

Please list (or attach a list of) all staff members of the co-op (including those housed at the co-op and paid through other sources), their titles and the salary funding sources for the positions. Place an asterisk (\*) beside those who are housed at the co-op only and whose salary does not flow through the co-op's budget.

## Arch Ford Education Service Cooperative Employees 2011-2012

S=State, F=Federal, H=Head Start, M=Medicaid, P=Private Funding, B=Base Funds, D=District Allocations

<b>Name</b>	<b>Position</b>	<b>Funding Source</b>	<b>New Hire</b>	<b>Resigned</b>
Adams, Amber	Early Childhood Teacher	S		
Anderson, Terry	Virtual School Assistant	S		
Arnold, Lezlie	Speech Pathologist	S		
Bailey, Karen	Speech Pathologist	S		
Baker, Lemon	AVS Business Science Specialist	S		
Ballard, Billy	Dir. of AR Home School	S		
Benish, Tricia	Behavior Specialist	S		
Biggers, Tricia	Speech Pathologist	S		
Blackwell, Londa	Early Childhood Teacher	S	X	
Blankenship, Brittany	Early Childhood Teacher	S		
Blocker, Joanna	Early Childhood Teacher	S		
Boatner, Karen	Early Childhood Teacher	S		
Boyer, Mary	Receptionist/Bookkeeping Assistant	B		
Bradley, Curtis	ALE Administrative Assistant	D		
Britton, Dionne	Director of AVHS	S	X	
Butler, Pamela	EC Para Professional	S		
Byrd, Virginia	ALE Teacher	S		
• Caldwell, John	Play It Again Arkansas			
Cheatham, Madelon	Science Specialist	S		
Cheney, Sara	Early Childhood Teacher	S		
Church, Bobby	ALE Instructor	D		X
Clay, Judy	Early Childhood Director	S		
Corning, Susan	Home School Assistant	S		
Couvertier, Kimberly	Accounts Receivable	B		X
Cunningham, Amy	SPCD School Psyc Examiner	S		
Dewveall, Denise	AP Teacher	S		
Dunn, Elizabeth	Early Childhood Teacher	S	X	
Dye, Stacey	ALE Secretary/Aide	D		
Earnhart, Mary	Printer	D		
Eary, Crystal	Speech Pathologist	S	X	
Eaton, Whitney	Speech pathologist	S	X	
Evans, Aimee	State CC PD Math Co Director	S	X	
Evans, Vicky	Data Processing Supervisor	D		
Freeman, Melissa	Early Childhood Teacher	S		
Freeman, Melissa	Speech Pathologist	S		
Gonia, Denise	Home School Administrative Assistant	S		
Gunn, Barry	AVS Teacher	S		
Hackler, Jewell	AVS Teacher	S		
Harmon, Cindy	Speech Pathologist	S		

Harness, Beth	Early Childhood Teacher	S		
Harrison, Peggy	ALE Teacher	D		
Hastings , Melissa	Para Professional	S		
Hill, John	ALE Teacher	D		
Holland, Diana	School Psychologist	D		
Horton, Clark	ALE Receptionist/Office Manager	D		
Huett, Jamyie	Early Childhood Teacher	S		X
Hutson Richard	ALE Instructor	D		
Hyde, Richard	ALE Teacher	D		
Jones , Judith	Warehouse Assistant	D		
Jordon, Jennifer	Early Childhood Teacher	S		
Kelley, Julie	Para Professional	S		
King, Alvin	Purchasing Warehouse	D		
Koontz, Stephanie	Bookkeeper	B		
Kreun, Debbie	Para Professional	S		
Larosa, Jill	LEA	D		
Laster, Kayla	Speech Pathologist	S	X	
Latina-Smith, Carol	ALE Instructor	D		
Laughinghouse, Cheryl	Literacy Specialist	S	X	
Lee, Roger	ALE Para Professional	D		X
Lester, Susan	LEA Supervisor	D		
Linn, Kevin	Maintenance	B		X
Linn-Stewart, Amanda	Bookkeeping Assistant	B		
Magie, Nina	Reading Specialist	S		
• McGraw, Mary	Community Health Nurse Specialist	S		
McKnight, Karen	School Psychologist	S		
McKnight, Neil	Behavior Specialist	S		
Miller, Patricia	Warehouse Supervisor	D		
Mills, Rebecca	Asst. Director of AVHS	S		
Mitchell, Lori	Workforce Coordinator	F,S		
Moore, Karen	Para Professional	S		
Morgan, Mark	Virtual School Tech	S		
Moss, Andrea	Speech Pathologist	S		
Muse, Amanda	Speech Pathologist	S		X
Newton, Tanya	Literacy Specialist	S		
Nosal, Rhonda	Special Pathologist	S		
O'Reilly, Sandy	Director of AVHS	S		
Overstreet, Ashley	Early Childhood Teacher	S		
Owen, Jim	ALE Director	D		
Parish, Teresa	Literacy Specialist	S		
Pearson, Trudy	Speech Pathologist	S		
Pense, Jennifer	AVS Teacher	S		
Phillipy, Michele	Virtual School Assistant	S		X
Pitman, Elissa	School Psychologist	D	X	
Price, Tammy	Custodian	B	X	
Rainbolt, Jonathan	LEA Supervisor/Coordinator	D		
Rainey, Kelli	LEA Supervisor	D		
Rainey, Tammy	LEA Supervisor	D		

Regan, Marcie	EC Program Assistant	S		
• Reifiess, Christine	School Nutrition	S		
Roberts, Jackie	Literacy Sp/AR Reading First	S		
Roderick, William	ALE Para Pro	D		
Ross, John	Technician	D		
Rush, Leslie	EC Teacher	S		
Russell, Lisa	Distance Learning Coordinator	S		
Schulze, Danielle	Early Childhood Teacher	S		
Schwartz Bonnie	ALE Para	D		
Sevier, Miranda	Early Childhood Teacher	S		
Shipp, Melissa	Early Childhood Teacher	S		
Smith, Tiffany	Early Childhood Teacher	S	X	
Smyth, Deborah	Virtual School Teacher	S		
Solida, Loretta	Secretary	D		
Standridge, Shirley	Staff Development Secretary	D		
Stevenson, Tara	Speech Pathologist	S		
Stein, Mary Katherine	Gifted Talented Supervisor	S,D		X
Stone, Tearani	Early Childhood Teacher	S		
Swan, Cathy	State Distance Learning Coordinator	S		
Tessman, Darrell	Facilities Coordinator	D		
Thomlinson, Diane	Warehouse Assistant Supervisor	D		
Thrasher, Lenett	TCC	B	X	
Tiner, Kandice	Print Shop Assistant	B	X	
Toll, Angela	Special Ed. Supervisor	D		
Trantina, Christy	Technology Assistant	S		
• Turner, Chere'	APSCN			
Varvil, Beth	School Psychologist	D		
Via, Nancy	Math Specialist	S		
Via, Ricky	Maintenance	D		
Vincent, Teresa	Facilities Administrative Assistant	D		
Weaver, Kathryn	Speech Pathologist	S		
Wells, Rachel	ALE Para Professional	D		
Williamson, Deanna	Speech Pathologist	S		X
Winfrey, Janis	Facility/function Supervisor	S/B		
Winfrey, Lori	Focus Testing/ Print Shop Assistant	D		
Wofford, Lindsay	Receptionist	B	X	
Young, Phillip	Cooperative Director	B		
Zimmerman, Angie	Literacy Specialist	S		

## TEACHER CENTER

Please attach a list of all inservice training/staff development workshops offered through the co-op, including month offered, topic, number of districts participating, number of participants and location of workshops. Place an asterisk (\*) beside those which provided curriculum assistance. Include a cumulative total of participants. See attached form.

- A. Does the co-op provide media services to schools? YES [ ] NO [ X ]  
Approximate the number of titles in media center:  
Does the co-op provide delivery to the districts? YES [ ] NO [ X ]  
How many districts participate in the media program?  
How many titles (including duplicate counts) were provided to schools during this current year?  
Do districts contribute dollars to the media services YES [ ] NO [ X ]  
How are media charges per district determined (formal or per ADM)?  
Please describe: \_\_\_\_\_  
Does the co-op operate a "make-and-take" center for teachers? YES [ X ] NO [ ]  
If yes, then:  
How many teacher visits have been made to the center? (Count all teachers who have visited the center, using duplicate counts for teachers who have visited the center more than once). A Teacher Center is available for teacher use in an open environment at our coop. Teachers may access materials during regular coop hours without formally signing in so there are no records of usage.

### III. ADMINISTRATIVE SERVICES

Please check administrative services offered through the co-op:

- [ X ] Administrators and Local Board Members Training
- [ X ] Assessment Data Analysis
- [ X ] Bookkeeping assistance
- [ X ] Business Management training
- [ X ] Computer Technician
- [ X ] Cooperative Purchasing
- [ X ] C.P.E.P. Administration
- [ X ] Curriculum Alignment
- [ X ] E-Rate Applications
- [ X ] Evaluation procedures
- [ X ] Gifted and Talented assistance
- [ X ] Grant writing assistance
- [ X ] Instructional Facilitator Training
- [ X ] Math Coaches Training
- [ X ] Math/Science/Literacy Specialists

- Migrant program
- Numerous professional development opportunities for teachers
- Personnel application
- Planning assistance
- Special Education Services
- Target Interim Assessments
- Technology training
- Other (please specify)
- Print Shop
- Purchasing Department
- Facilities Coordination
- Home School Testing

#### **IV. DIRECT SERVICES TO STUDENTS**

Please check the student services provided through the co-op:

- Computer-assisted instruction
- Gifted/talented programs: 26 participating districts
- Itinerant teachers – please list areas: Early Childhood, Special Ed. Teachers, Charlie May Simon
- Low Incidence handicapped
- Mentor programs: Pathwise
- Music, art
- Occupational therapy and physical therapy
- Speech therapist
- Student assessment program
- Video instruction
- Other (Please specify):
- Nursing Services

## **V. ANECDOTAL REPORTS**

Please attach three or four descriptions of activities which demonstrate partnerships, agreements or creative ways that the co-op has assisted local districts. The co-op personnel may write the reports, or the descriptions may be written by local schools served by the co-op. These reports may also include letters sent to the co-op or evaluations of a co-op activity.

### **ARCH FORD EARLY CHILDHOOD SPECIAL EDUCATION PROGRAM**

The Arch Ford Cooperative Early Childhood Special Education Program has successfully completed twenty- four years of direct services to children ages three to five with disabilities. Since 1988, the Program has grown and this year alone served 1,172 students on behalf of the 27 school districts in the cooperative region. Services include screenings, evaluations, behavior / social skills training, speech / language therapy, developmental therapy and physical and occupational therapy... With the goal of preparing children for future school success, the Early Childhood Program staff work closely with agencies, child care providers, physicians, universities, and parents to build the foundation for educational partnerships prior to kindergarten.

In an effort to promote developmental appropriate services for all children, the Early Childhood Program provides technical assistance to child care providers in over 212 facilities. Services are provided and delivered through a free and appropriate public education which may include interaction with peers who are developing normally, coordination with other agencies, public school based classrooms, public and private preschools such as daycare centers and head start centers, itinerant based services and home based for children with medical needs. The Arch Ford Early Childhood Program works collaboratively with Yale University and serves as a pilot site for the Mutt- i- grees social emotional curriculum. The curriculum is implemented in the Arch Ford ABC classroom and 3 other ABC sites in Conway, Guy Perkins, East End Bigelow, and Vilonia.

The program is monitored by the Arkansas Department of Education, Special Education Division, and has been in compliance meeting all standards and regulatory procedures. Parents are encouraged to actively participate in all aspects of the program and offer input regarding their child. Parent surveys are conducted each year.

Recently a parent wrote, "I am so thankful that my son participated in the Arch Ford Program this year. My family and I have noticed so much progress. All of the teachers have been wonderful and have provided a warm, inviting, positive, caring, and stimulating environment for my child. Thank you for making a difference." L. Beqiri

### **ARCH FORD FACILITIES PROGRAM**

Due to the ruling of the Lake View School District versus the State of Arkansas case in 2002, the State of Arkansas was required to develop a system to ensure its public school systems maintained a state of "facilities equitability." The resulting entity created to oversee facilities equitability is the Arkansas Division of Public Schools Academic Facilities & Transportation (ADPSAFT).

The Arch Ford Facilities Program was created in 2007 to assist school district in maintaining compliance with the new laws and rules administrated by the ADPSAFT. Arch Ford Facilities, in essence, acts as a liaison between the school districts and the ADPSFAT.

The ADPSAFT created the Master Plan and Partnership Program as forms of assisting, funding and regulating school district's facilities. The Master Plan and Partnership Program are both document intensive, relying on interpretation of state law, knowledge of physical construction methods, construction means and financing.

Arch Ford Facilities helps the participating school districts gather information on existing facilities, assess conditions and needs of existing facilities and suggest/analyze potential partnership projects eligible for state funding. Arch Ford Facilities then takes the information and enters it into the document forms and/or software the state has mandated to utilize.

Arch Ford Facilities is staffed by Facilities Coordinator, Darrell E. Tessman and Administrative Assistant, Teresa Vincent. The total participating school districts of the program is 23. This is a large number of districts to maintain with the amount of information to be conveyed and stored, but with the utilization of technology and optimum time efficiency, it has been achieved without sacrificing quality.

Also, as a service to all Arch Ford School Districts, the facilities program has hosted onsite conference meetings in safety, asbestos, SchoolDude and Master Planning. We aim to educate school district staff and administration in all aspects of the services we provide and the ones that are peripheral to our stated scope of work.

Arch Ford Facilities' goal is to keep participating school districts abreast of most current rules and laws pertaining to facilities. School districts will also be informed of "how" and "why" the processes of the Master Plan and Partnership Program are performed. It is our goal to make the districts aware of our overall activity, methods and means, but not to cause the district an exorbitant loss of time in the details.

## **ARCH FORD TECHNOLOGY**

The Arch Ford Technology Department was established to support member districts in the management and maintenance of their local area network (LAN), and that relationship continues today. The current the transition to the Common Core State Standards and online PARCC assessment revealed the need for districts to consider the curricular side of technology as well.

The Arch Ford Technology Department has worked with member school districts to increase awareness and develop strategies for improving instructional technology and student technology skills. Having an Instructional Technology Coordinator is helpful to this process, and currently 10 Arch Ford districts have implemented such position.

During the 2011-2012 school year, an Instructional Technology cadre was formed to consisting of 2 participants from 24 member districts. The purpose of this cadre is to improve the quality of technology professional development at the local district. The cadre met 3 times during the school year to learn new technology integration tools and resources, and to provide collaboration between districts in many areas of instructional technology including Internet tools and resources, lesson plan sharing, 1:1 digital initiatives and funding strategies. The cadre will continue to meet during the 2012-2013 school year.



**VI. EMPLOYMENT POLICIES AND PRACTICES**

Act 610 of 1999 requires that each educational service cooperative report the following information:

**EMPLOYED**

Number of new males employed by the cooperative for the 2011-2012 school year: 0

For this number above, please provide the number in each of the following racial classifications:

White 6

African American 0

Hispanic 0

Asian 0

American Indian/Alaskan Native 0

Number of new females employed by the cooperative for the 2011-2012 school year: 13

For this number above, please provide the number in each of the following racial classifications:

White 12

African American 1

Hispanic 0

Asian 0

American Indian/Alaskan Native 0

**TERMINATED**

Number of males terminated by the cooperative during the 2011-2012 school year: 3

For this number above, please provide the number in each of the following racial classifications:

White 3

African American 0

Hispanic 0

Asian 0

American Indian/Alaskan Native 0

Number of females terminated by the cooperative during the 2011-2012 school year: 3

For this number above, please provide the number in each of the following racial classifications:

White 3

African American 0

Hispanic 0

Asian 0

American Indian/Alaskan Native 0

**SEEKING EMPLOYMENT**

Number of males seeking employment by the cooperative during the 2011-2012 school year: 14 For this numbers above, please provide the number in each of the following racial classifications: White 13

African American 1

Hispanic 0

Asian 0

American Indian/Alaskan Native 0

Number of females seeking employment by the cooperative during the 2011-2012 school year: 42

For this number above, please provide the number in each of the following racial classifications:

White 41

African American 0

Hispanic 0

Asian 1

American Indian/Alaskan Native 0

**PROGRAM: Arkansas Home School Testing 2011-2012**

**FUNDING SOURCE:** Arkansas Department of Education Grant

**COMPETITIVE GRANT:** Yes \_\_\_\_\_ No X

**RESTRICTED FUNDING** \_\_\_\_\_ **NON-RESTRICTED:** x

**PARTICIPATING DISTRICT:** Statewide Program

**PERSONNEL:** Billy D. Ballard, State Coordinator; MSE, Ed. Adm. Specialist Degree  
Susan Corning, Assistant Office Manager, Parent Liaison; UALR, two years,  
General Education  
Denise Gonia, Information Technology Specialist  
Enrolled in Pulaski Tech

**GOAL:**

Manage the annual testing of home school students in grades three through nine.

**PROGRAM SUMMARY:**

The staff creates a database with the names of all home school students in grades three through nine. Included in the information are the names of the students and their parent(s)/guardians.

Date is derived from the Intent to Home School form provided by the Home School Office at the Department of Education. The staff uses this data to send testing information to home school parents/guardians giving the places of test sites, dates and schedules.

The staff is responsible for approving all test sites that are manned by paid site coordinators. The staff is responsible for approving testing by home school groups that meet regularly and can provide a proper testing facility.

The home school testing website (<http://www.arhomeschooltesting.org>) provides yearlong information and serves as an online registration vehicle. Online registration is used to select various options for meeting the state mandate for home school testing. Parents that do not have a computer, or choose not to register online, can send their responses to the Home School Testing Office by regular mail.

The Home School Testing Office is responsible for purchasing sufficient test materials and coordinating the shipment of materials to test sites. UPS is used to ship materials to and from the test sites.

Tests are scanned and data sent to Riverside Publishing Company for scoring. Test results are printed and mailed to the parent.

**MAJOR HIGHLIGHTS OF THE YEAR:**

Positive feedback from parents and home school groups was received all during the year. Deadlines were met for data entry, letters to parents, testing of students, printing and mailing of test results. Online registration is widely accepted by the home school parents.

**PROGRAM:** Arkansas Public School Computer Network (APSCN)

**FUNDING SOURCE:** Arkansas Department of Education

**COMPETITIVE GRANT:** Yes \_\_\_ No X

**RESTRICTED:** Yes X No \_\_\_\_\_

**PARTICIPATING DISTRICTS:** Atkins; Clinton; Concord; Conway; Dover; East End; Greenbrier; Guy Perkins; Heber Springs; Hector; Mayflower; Mt. Vernon/Enola; Nemo Vista; Perryville; Pottsville; Quitman; Russellville; S. Conway County; Shirley; Southside Bee Branch; Vilonia; West Side; Wonderview

**PERSONNEL:** Chere Turner, B.S.

**GOAL:**

- To assist schools within the Arch Ford Coop area with their Student Management System (SMS) electronic records system and meeting statewide guidelines.
- To assist district with Cognos reports.
- To assist districts with day-to-day problems and training in the SMS software
- To assist with training and the electronic submission of the Statewide Information System Report Cycles required by the Arkansas Department of Education.

**PROGRAM SUMMARY**

The Student Applications Field Analyst provides services to districts within Arkansas that utilize the SMS statewide Student Management System software to electronically submit data to the Department of Education as required by law. The software is used to store district, school, and student data. The SunGard Student Management Systems Applications provided by APSCN is computer software used primarily to process and maintain student records. The modules include: Demographics, Attendance, Scheduling, Report Cards, Transcripts, Interim Progress Reports, Discipline and Medical. The student field analyst provides districts with consulting and training workshops through meetings at the Cooperative, school visits, and communicating closely by e-mail and telephone. Various trainings offered throughout the year include, but are not limited to, SMS Required Fields for State Reporting, New Personnel, Implementation of new software for Statewide reporting, Cognos Report Writing, Next Year Scheduling and Year End Rollover.

**MAJOR HIGHLIGHTS OF THE YEAR:**

- State Report Cycle Training and workshops for all Arch Ford districts
- Beginning Immunization Records training for the 2011-2012 school year.
- Review and Training for each of the 9 Student Management software modules
- Cognos Report Writer Training
- Various workshops to assist with trouble shooting and entering data

**PROGRAM:** Career and Technical Education

**FUNDING SOURCE:** Department of Career Education and District allocations of Carl D. Perkins Federal Funds

**COMPETITIVE GRANT:** Yes \_\_\_ No X

**RESTRICTED FUNDING** X **NONRESTRICTED FUNDING** \_\_\_

**PERSONNEL:** Lori Mitchell, CTE Coordinator, M.S.E.  
Angie Zimmerman, CTE Academic Attainment Specialist, M.S.E.

**Participating Districts:** 17

Atkins	Clinton	Danville
Dardanelle	Dover	East End
Greenbrier	Guy-Perkins	Heber Springs
Hector	Mayflower	Mt.Vernon/Enola
Nemo Vista	Perryville	Quitman
Shirley	Southside-Bee Branch	Two Rivers
Western Yell County	Westside-Greers Ferry	Wonderview

**GOAL:**

- To provide Career and Technical Education instructors quality staff development to enhance student achievement
- To encourage the development and implementation of advanced technologies in the improvement of Career and Technical Education Programs.
- To provide a comprehensive career planning system for all secondary students within our consortium schools.

**PROGRAM SUMMARY:**

The Career and Technical Education Department has the responsibility to develop and coordinate the Carl D. Perkins Program. This includes proposal writing for consortium schools, managing the budget, and providing accountability information to the Department of Career Education. It is our goal to serve as a liaison between our member schools and the Career and Technical Education state staff in the collection of data; evaluation of programs; assistance to new instructors; and continuing staff development for all career and technical education instructors. Staff development includes such initiatives as; Career Action Planning, Student Competency Testing, Integration of Academic and Career and Technical Education, Accountability in the CTE Classroom and Instructional Strategies in the CTE Classroom. We also provide Career Development Folders and ACT Explore and Plan Interpretations for 8<sup>th</sup> and 10<sup>th</sup> graders. The Career and Technical Education Department will continue to encourage the development, implementation, and improvement of Career and Technical Education Programs by supporting curriculum changes that move students along to current industry standards and purchasing equipment to teach the new-advanced technology.

## **Major Highlights of the Year:**

- Meet all Perkins Performance Indicators for the 2010-2011 school year
- Secured competitive grants for starting new programs in eight cooperative districts in the amount of \$281,293.14.
- Obtained CTE Completer Data for 22 high schools and provided each completer with a Completer Certificate
- Handled all financial duties for the Department of Career Education's Career Guidance Mentorship Program.
- Served as the Career and Technical Education representative on the Arkansas Department of Education's Committee of Practitioners
- Obtained CTE Placement Data for 22 high schools
- Assisted all CTE Instructors with the ACE Teacher Information System and On-line Student Competency Testing System
- Provided Student Competency Test results to all cooperative high schools
- Provided professional development in the areas of Career Planning, Technical Assistance Monitoring, Development of Exemplary Lessons in Career and Technical Courses, Classroom Response Training, and Literacy Strategies in Career and Technical Courses

## ARCH FORD PERKINS CONSORTIUM PERFORMANCE DATA

INDICATOR	2012-13 GOAL	ACTUAL PERFORMANCE			ANNUAL INCREASE	2011-12 TARGET
		2008-09	2009-10	2010-11		
Academic Attainment-Literacy	83.88%	51.94%	58.21%	62.94%	8.11%	71.05%
Academic Attainment-Geometry	73.45%	66.29%	71.46%	73.55%		72.45%
Technical Attainment	70.00%	57.22%	58.53%	82.00%		64.27%
High School Completion	92.30%	94.92%	95.64%	96.37%		93.47%
High School Graduation	87.50%	93.08%	94.77%	94.81%		85.00%
Placement	95.16%	93.16%	92.92%	94.16%		93.56%
Nontraditional Participation	25.11%	28.72%	28.21%	23.64%	1.97%	25.61%
Nontraditional Completion	20.24%	31.82%	29.66%	24.64%	2.77%	27.41%

**Participant:** a student enrolled in 1 credit or more, used for the Nontraditional Participation measure.

**Concentrator:** a student enrolled in three units within a program of study, used for the Literacy, Geometry, Completion, Graduation and Technical Attainment measures.

**Completer:** a student who completes a program of study and graduates, used for the Placement and Nontraditional Completion measures.

**Academic Attainment Literacy:** number of CTE concentrators who have met the proficient/advanced level on the Statewide high school reading/language arts assessment.

**Academic Attainment Geometry:** number of CTE concentrators who have met the proficient/advanced level on the Statewide high school mathematics assessment.

**Technical Attainment:** number of CTE concentrators who were proficient on assessments taken within the program of study.

**High School Completion:** number of CTE concentrators that graduate plus the number of CTE concentrators that receive a GED during the reporting year.

**High School Graduation:** number of CTE concentrators who, in the reporting year, were included as graduated in the State's computation of its graduation rate.

**Placement:** number of CTE concentrators who successfully completed the program of study and graduated from high school and who were employed, enrolled in post-secondary, or in the military six months following graduation.

**Nontraditional Participation:** number of nontraditional gender students enrolled in one or more units within a program of study that is nontraditional for their gender during the reporting year.

**Nontraditional Completion:** number of nontraditional gender concentrators who successfully complete programs of study designated nontraditional and graduate from high school during the reporting year.

**PROGRAM: Community Health Nurse & Promotion Specialists**

**FUNDING SOURCE:** Arkansas Department of Health

**COMPETITIVE GRANT:** Yes \_\_\_ No x

**RESTRICTED FUNDING:** \_\_\_\_\_ **NONRESTRICTED FUNDING** x

**SCHOOL DISTRICTS:** Atkins, Clinton, Conway, Danville, Dardanelle, Dover, East End, Greenbrier, Guy-Perkins, Heber Springs, Hector, Mayflower, Mt. Vernon/Enola, Nemo Vista, Perryville, Pottsville, Quitman, Russellville, Shirley, South Conway County, South Side, Two Rivers, Vilonia, West Side, Western Yell County, Wonderview

**PERSONNEL:** Mary Glasscock, Community Health Nurse Specialist, RN, MPH  
Christine Reifeiss, Community Health Promotion Specialist, RD, MS

**GOAL:** Provide technical assistance to schools in order to promote, improve and support student health

**PROGRAM SUMMARY:**

Provide technical assistance to schools to assist schools to:

- adopt tobacco-free policies and implement best practices for tobacco prevention and cessation
- adopt policies promoting and implementing best practices for nutrition, physical activity, Coordinated School Health and emerging public health issues
- strengthen school wellness committees and fulfill state and federal mandates
- inform communities of school health issues and current public health policy

Provide education and training to:

- certify school nurses and conduct mandated health screenings
- provide school nurses with professional continued education related to school health
- inform schools and communities of school health resources, available trainings, and grant opportunities
- promote research-based, best practice comprehensive health education curriculum to school nurses and school staff

**MAJOR HIGHLIGHTS OF THE YEAR:**

- Presented SCOPE (School Nurse Childhood Obesity Prevention Education) a National School Nurses Association training at each Educational Cooperative for school nurses throughout the state. Six hours of Nursing Credits were provided per site.)
- Provided school nurses with mandatory screening trainings. (Hearing, Vision, Scoliosis, Obesity Prevention.) Nursing Credits provided to attendees.



- Facilitated application and procurement of physical activity and nutrition related grants. (Examples include but are not limited to joint use agreements in Conway, Growing Healthy Community Grant in Clinton, Safe Routes to School Grant in Conway.)
- Facilitated partnerships to support physical activity and access to healthy food for students (Examples: establishment of contact with USTA for tennis equipment and afterschool programs, creating collaboration between city leaders and school personnel in Conway)
- Provided assistance to schools in planning for use of physical activity related grant funding
- Arranged, facilitated and/or provided >9 hours of continuing education credits for health teachers, PE teachers and other teachers
- Provided hands-on nutrition education for students (example: Morrilton)
- Provided training to school nurses in preparation for school flu clinics
- Provided training facilitator training to school nurses for paraprofessional supervision
- Participated in School Family School Health Fairs and provided school nurses with educational materials for flu prevention, tobacco prevention and cessation

**PROGRAM:** Consolidated Purchasing Services

**FUNDING SOURCE:** Base Fund: Local-Pass through participating districts

**COMPETITIVE GRANT:** Yes \_\_\_\_\_ No

**RESTRICTED** \_\_\_\_\_ **NON-RESTRICTED**

**PARTICIPATING DISTRICTS:**

Atkins, Clinton, Conway, Danville, Dardanelle, Dover, East End, Greenbrier, Guy-Perkins, Heber Springs, Hector, Mayflower, Mt. Vernon, Nemo Vista, Perryville, Pottsville, Quitman, Russellville, Shirley, S. Conway County, South Side, Two Rivers, Vilonia, West Side Greersferry, Western Yell Co., Wonderview. All other schools in Arkansas are eligible, with most participating. Several other states also participate, including: Connecticut, Florida, Illinois, Indiana, Iowa, Kansas, Kentucky, Michigan, Mississippi, Missouri, Tennessee, Texas, Washington and Wisconsin. (250+ Districts in all)

**PERSONNEL:** Tricia Miller, Purchasing Supervisor  
Diane Thomlinson (B.S.), Asst. Purchasing Supervisor  
Ricky Via, Delivery  
Alvin King, Warehouse Manager  
Judith Jones, Warehouse Assistant

**GOAL:**

- To assist large and small school districts in increasing their purchasing power.
- To make the purchasing program accessible to all educators.
- To maintain warehouse inventory for purchases throughout the year.
- To assist schools in getting supplies in a timely manner.
- To continually increase buying power to provide schools with lowest possible prices year round.
- To provide easy shopping, either by fax, on-line or in-house.
- To provide superior delivery services than common carriers

**PROGRAM SUMMARY:**

The Arch Ford Education Co-Operative Purchasing Department was established in 1985 when 30 school districts pooled their resources in order to bid for quantity discounts on a few items. While consolidated purchasing is no longer a new concept, Arch Ford paved the way for Arkansas schools to reap the benefits of cooperative purchasing. Not only does this help in the area of monetary savings, but it also maintains the schools compliance with Arkansas Bid Laws. Entire warehouse inventory is competitively bid, which allows smaller schools without purchasing personnel to benefit from quantity based pricing. Another advantage afforded to Arch Ford cooperative schools is free delivery. The purchasing department has scheduled deliveries at least twice a month to cooperative schools. The Arch Ford delivery staff is glad to take the supplies to any location within the school instead of dropping it at the front door like most common carriers.

The Purchasing Department has over 28,000 square feet of inventory storage space. This has allowed inventory expansion and the introduction of new products as they become available and requested. Given the current market on copy paper, this amount of space allows the purchase of enough paper, approximately 8400 cases, to provide Arch Ford co-operative schools with paper at a level price throughout the year. In addition, the Purchasing Department will deliver whatever amount of paper a facility is physically capable to store, eliminating the schools need for excess storage areas.

### **Major Department Highlights:**

The Purchasing Department supports schools in a variety of ways, including:

- Monetary savings on items ranging from 20% to 50%
- Will pack individual teacher orders or bulk campus orders.
- Will invoice orders to the districts specifications, either one "bulk" invoice and total, or individual invoices by teacher. This allows bookkeepers to monitor the individual teacher accounts more efficiently.
- Competitively bid all inventory annually to maintain compliance with Arkansas Bid Laws.
- All Back-to-School orders delivered before the first day of school

**PROGRAM:** **Cooperative Print Shop**

**FUNDING SOURCE:** Base Funds/Local Purchase of Services

**COMPETITIVE GRANT:** Yes \_\_\_\_\_ No X

**RESTRICTED FUNDING** \_\_\_\_\_ **NONRESTRICTED FUNDING** X

**PARTICIPATING DISTRICTS:** Atkins, Clinton, Conway, Danville, Dardanelle, Dover, East End, Greenbrier, Guy-Perkins, Hector, Mayflower, Mount Vernon/Enola, Nemo Vista, Perryville, Pottsville, Quitman, Russellville, Shirley, South Conway County, South Side Bee Branch, Two Rivers, Vilonia, Westside Greers Ferry, Western Yell County, Wonderview.

**PERSONNEL:** Vicky Evans, Supervisor  
Kandice Tiner, Print Shop Assistant  
Mary Earnhart, Printer

**GOAL:**

To equip the print shop with the latest printing technology and machinery available in order to provide a more timely and cost effective printed material for our school districts.

**PROGRAM SUMMARY:**

Arch Ford Education Print Shop provides cost efficient printing for education based organizations within and outside the Arch Ford Cooperative region.

**MAJOR HIGHLIGHTS OF THE YEAR:**

- Added a new coil binding machine and an extra copier to our lineup of print shop shop equipment.
- Advertised our CCSS Booklets Nationwide in Education Week Magazine.
- Printed materials for over 500 schools in Arkansas and Missouri.

**PROGRAM:** Directors Office/Administration

**FUNDING SOURCE:** Base Funds

**RESTRICTED FUNDING**  X  **NONRESTRICTED FUNDING** \_\_\_\_\_

**PERSONNEL:** Phillip Young, Director, M.S.E. Ed.S.  
Stephanie Koontz, Bookkeeper, B.S.  
Amanda Stewart-Linn, Bookkeeping Assistant  
Mary Boyer, Accounts Receivable  
Lindsay Wofford, Receptionist, B.S.

**PROGRAM SUMMARY:**

The director has general supervisory responsibility for all cooperative programs. He is responsible to the governing and executive boards for recommendations on personnel, program changes, new programs, and routine daily management and operations. A primary responsibility centers upon his attending statewide meetings for the purpose of keeping the school boards and superintendents informed on matters relating to the legislative, state board, or other policy making bodies. He serves as liaison to the State Department of Education for member districts.

**FINANCES:**

The program funds are divided into State, Local, and Federal Programs. State and Local Programs are those programs that are either funded by state grants or revenue received from local school districts. Each program's funding operation is expected to support the program activities.

**PROGRAM:** **Distance Learning**

**FUNDING SOURCE:** ADE Grant – Act 2325 of 2005 (DL)

**COMPETITIVE GRANT:** Yes\_\_\_\_ No X\_\_\_\_

**RESTRICTED** X **NONRESTRICTED** \_\_\_\_

**PARTICIPATING DISTRICTS:**

Atkins, Clinton, Danville, Dover, East End, Greenbrier, Guy-Perkins, Heber Springs, Hector, Mayflower, Mt. Vernon-Enola, Nemo Vista, Perryville, Pottsville, Quitman, Russellville, Shirley, South Conway County, South Side (Bee Branch), Two Rivers, Vilonia, West Side (Greers Ferry), Western Yell, Wonderview

**PERSONNEL:** Lisa Russell, Distance Learning Coordinator (BSE)  
Dionne Britton, Academic Director, AVHS (MSE)

**GOAL:**

The mission of the distance learning program is to support and encourage quality distance learning experiences and ensure equity of opportunity for ALL Arkansas stakeholders. We strive to provide current information, training, and support; coordinate efficient use of resources; promote and expand quality 21st Century distance learning opportunities; and provide the vision for the future of the Arkansas K-12 Distance Learning Initiative.

**PROGRAM SUMMARY:**

In recent years, Arkansas school districts have increased the use of Distance Learning employing both compressed interactive video (CIV) and web-based programs for courses and professional development opportunities. Arch Ford ESC provides distance learning services to the Arch Ford ESC area districts as well as providing high school courses statewide through the Arkansas Virtual High School. With recent restructuring of content providers, the Arch Ford Advanced Placement Distance Learning Center was dissolved this year; however, two of the instructors were retained by another content provider and continue to teach from this facility.

- The distance learning coordinator provides services such as videoconferencing equipment installation coordination, professional development trainings and workshops, site visits, course scheduling, distance learning initiative updates, standards and rules updates, software/equipment improvements, grant announcements, equipment & technology troubleshooting, course enrichment sessions, online distance learning course designing, learning management system availability and maintenance, Arkansas Distance Learning Consortium support, and support to the Advanced Placement Instructors.
- Compressed Interactive Video has become an integral part of the delivery of information in the cooperative area offering professional development through meetings, workshops, informational sessions and a variety of other services. Since the Act 2325 implementation, 25 districts in our cooperative area have installed CIV labs for the purpose of sending and receiving core courses, Advanced Placement courses, enriched elective courses, and concurrent credit courses. These courses are received from state-

funded content providers, sharing between districts, or partnering with approved higher education institutions. Other uses of the CIV labs include professional development and interactive virtual field trips for students. Currently, 24 districts use their CIV labs for courses and/or professional development.

- An online learning management system (Moodle) is hosted by and maintained by the Distance Learning Coordinator for the benefit of cooperative employees as well as the AP instructors. The cooperative employees use Moodle as a platform for developing online professional development. The AP instructors use Moodle for online content, quizzes, discussion board, and chat as features to enhance a blending learning environment.
- Arkansas Virtual High School (AVHS) is an online school which allows students to take core, elective and advanced placement courses. Students can access these courses anytime, anywhere through our online Blackboard Learning Management System. We allow any 9<sup>th</sup>-12<sup>th</sup> grade public or homeschooled student who is registered with his or her local school district to take courses through this program. This program provides students the opportunity to take courses which may not be offered at the student's local district, provides the opportunity for students to make up missed credits, and offers a solution for class scheduling conflicts at the student's local school. AVHS has a unique set of instructors who not only teach students, but also create online course material, utilizing the latest technology. With the addition of a new Academic Director this year, AVHS has restructured its staff which has provided an opportunity to utilize the experience and expertise of teachers from all across the state in addition to the seven full-time teachers. This program has grown from eight courses with 94 students in the Spring semester of the year 2000 to serving over 2,000 students per semester in the 2011-2012 school year.

### **Major Highlights of the Year:**

- All full-time AVHS instructors trained and certified in the "Fundamentals of Teaching Virtual K-12 Students"— This 45 hour course allows staff to stay current with national online teaching standards
- Distance Learning Instructor Certification Training – trained and certified 6 instructors in distance learning instructional strategies
- Distance Learning Facilitator Training – trained and certified 11 new facilitators in the role of the facilitator, classroom management, testing ethics, and a host of other topics
- A summer package of professional development sessions was organized by Distance Learning Coordinators and presented through videoconferencing in the content areas of Instructional Technology, Economics, History, Arkansas History, Fine Arts, Online Communication & Etiquette, Parental Involvement, Anti-Bullying, and Building a Collaborative Learning Community. These sessions were presented by authors, museum experts, and content experts from all over the country.
- Hosted and managed an online learning management system for AP instructors as well as for cooperative employees
- Assisted math specialists with initial development of online Common Core State Standards professional development in the areas of math on the Arch Ford Moodle as well as providing course design services for literacy modules on the statewide learning management system

- Completed 55 fall & spring site visits to schools to observe distance learning classes and made other visits as needed for troubleshooting, facilitator training, video network migration, and any other distance learning needs
- Offered Virtual Field Trip showcases as professional development opportunities for classroom teachers focused in the content areas of music, art, and history
- 34.5% of students enrolled in Arch Ford DLC courses scored 3 or above (out of a possible 5) to earn college credit, advanced placement or both.



**PROGRAM:** **Early Childhood Special Education**

**FUNDING SOURCE:** Federal and State Grant / ADE

**COMPETITIVE GRANT:** Yes \_\_\_ No X

**RESTRICTED** X **NON-RESTRICTED** \_\_\_

**PARTICIPATING DISTRICTS:** Atkins, Clinton, Concord, Conway, Danville, Dardanelle, Dover, East End, Greenbrier, Guy Perkins, Heber Springs, Hector, Mayflower, Mt. Vernon/Enola, Nemo Vista, Perryville, Pottsville, Quitman, Russellville, Shirley, South Conway County, Southside/Bee Branch, Two Rivers, Vilonia, Western Yell, Westside, Wonderview,

**PERSONNEL:** Judy Clay, Early Childhood Special Education Director (M.S.E.)  
Amber Adams, Speech Pathologist (M.S.E.)  
Lezlie Arnold, Speech Pathologist (M.S.E.)  
Karen Bailey, Speech Pathologist (M.S.E.)  
Tricia Benish, Behavior Specialist (Ph.D)  
Londa Blackwell, Early Childhood Special Education Teacher (B.S.E.)  
JoAnna Blocker, Early Childhood Special Education Teacher (M.S.E.)  
Karen Boatner, Early Childhood Special Education Teacher (M.S.E.)  
Pam Butler, Para Educator (A.A.)  
Whitney Doramus, Speech Pathologist (M.S.E.)  
Elizabeth Dunn, Early Childhood Special Education Teacher (M.S.E.)  
Sara Cheney, Early Childhood Special Education Teacher (M.S.E.)  
Crystal Eary, Speech Pathologist M.S.E.)  
Melissa I. Freeman, Early Childhood Special Education Teacher (B.S.E.)  
Melissa A. Freeman, Speech Pathologist (M.S.E.)  
Cindy Harmon, Speech Pathologist (M.S.E.)  
Beth Harness, Early Childhood Special Education Teacher (M.S.E.)  
Melissa Hastings, Para Educator/ABC (B.S.E)  
Jennifer Jordan, Early Childhood Special Education Teacher (M.S.E.)  
Julie Kelley, Para Educator (AA)  
Debbie Kreun, Para Educator  
Kayla Laster, Speech Pathologist (M.S.E.)  
Neil McKnight, Behavior Specialist (S.P.S.)  
Karen Moore, Medicaid/Office Clerk (A.A.S.)  
Andrea Moss, Speech Pathologist (M.S.E.)  
Rhonda Nosal, Speech Pathologist (M.S.E.)  
Ashley Overstreet, Speech Pathologist (M.S.E.)  
Trudy Pearson, Speech Pathologist (M.S.E.)  
Marcie Regan, Administrative Assistant  
Leslie Rush, Early Childhood Special Education Teacher (M.S.E.)  
Danielle Schulze, Speech Pathologist (M.S.E.)

Miranda Sevier, Early Childhood Special Education Teacher (M.S.E.)  
Tiffany Smith, Early Childhood Special Education Teacher (M.S.E.)  
Melissa Shipp, Early Childhood Special Education Teacher (M.S.E.)  
Tara Stevenson, Speech Pathologist (M.S.E.)  
Tearani Stone, Early Childhood Special Education Teacher (M.S.E.)  
Kathryn Weaver, Speech Pathologist (M.S.E.)

### **GOAL:**

- To identify children ages three to five in need of special education services through screenings and evaluations
- To provide developmentally appropriate special education services for identified preschool children ages three to five through an Individual Education Program
- To enhance teacher awareness of current best practices through high quality professional development
- To provide supports for child care providers in the delivery of services for children with special needs

### **PROGRAM SUMMARY:**

The Arch Ford Early Childhood Program is a mandated special education preschool program for children with disabilities ages three to five. The services are offered in accordance with the Individuals with Disabilities Education Act on behalf of the local school districts.

A child may be eligible for special services if he/she is experiencing difficulties which interfere with normal development in the following areas: speech/language, vision, hearing, motor skills, behavioral/social skills or cognition/readiness skills. Services are provided at no cost to the family. Services include screenings, evaluations, preschool instruction, speech/language therapy, physical/occupational therapy and other appropriate services. Services are provided and delivered through a free and appropriate public education which may include interaction with peers who are developing normally, coordination with other agencies, public school based classrooms, public or private preschools such as daycare centers and head start centers, itinerant based services, and home based instruction.

Special Education due process procedures are followed for all children in the Early Childhood Program. The Program is monitored by the Arkansas Department of Education, Special Education Division. The Program receives state and federal funding based on December 1 Child Count. There is no cost to the family for services. However, Medicaid and private insurance are billed when appropriate.

### **Major Highlights of the Year:**

- Conducted screenings in child care settings throughout the cooperative area
- Increased the total number of children identified and served. The December 1, 2011 child count was 716 indicating an increase of 9 children from the previous year.
- Implemented the Mutt-i-grees Social Learning Curriculum in child care settings in the cooperative area.

- Served as a cooperative partner with Yale University for the social emotional curriculum in the Arch Ford ABC classroom and child care centers
- Provided training and technical support for day care personnel
- Provided staff development training opportunities based on needs survey
- Conducted team meetings and consultations for program data analysis
- Continued Interagency collaboration with head start, Department of Human Services, Arkansas Better Chance, child care providers, related service providers, public schools, and health departments
- Contracted with Arkansas Children's Hospital for direct Audiology Services for children including screenings and evaluations
- Updated technology equipment for staff to use in direct therapy with children
- Trained early childhood and school age staff on transition procedures
- Expanded parent center and lending library
- Developed and implemented Preschool Support Team with elementary and preschool students
- Sponsored Preschool Parent Enrichment Day for parents, students and faculty at elementary school

**PROGRAM:** **Arkansas Better Chance Program (ABC Program)**

**FUNDING SOURCE:** ABC Grant

**PERSONNEL:** Karen Boatner, ABC Teacher ABC Teacher, M.S.E.  
Melissa Hastings, Para Educator, B.S.

**RESTRICTED FUNDING**   **X**                        **NONRESTRICTED FUNDING** \_\_\_\_\_

**PROGRAM SUMMARY:**

The Arch Ford ABC Program is a program designed to provide safe, healthy, nurturing experiences for preschool children in a developmentally appropriate setting. In order to be accepted into an ABC Preschool Program, the child must qualify under one or more of the following areas:

- 1) Income Level as listed on the application form
- 2) Teenage Parent
- 3) Low Birth Weight (under 5 1/2 lbs.)
- 4) Parent without high school diploma or GED
- 5) History of abuse/neglect or drug/alcohol abuse
- 6) Disability under IDEA
- 7) Failed developmental screening
- 8) English as a second language

**FUNDING STATEMENT:** The Arch Ford Cooperative received a grant for the ABC Program funded through the Arkansas Division of Child Care & Early Childhood Arkansas Department of Education. The ABC Program has established a Parent Advisory Board that meets monthly to work with the teacher and para-educator to enhance each child’s learning experiences and educational opportunities. There is no cost to the family for a child to be enrolled in the ABC Program.

**ARCH FORD ABC SITE:** Conway

**PROGRAM:** Gifted and Talented

**FUNDING SOURCE:** Local and State Grants from ADE

**RESTRICTED FUNDING**   X   **NONRESTRICTED FUNDING**       

**PERSONNEL:** Mary Kathryn Stein, G/T Specialist, A/P Specialist, MSE

**Participating Districts:**

Atkins, Clinton, Conway, Danville, Dardanelle, Dover, East End, Greenbrier, Guy-Perkins, Heber Springs, Hector, Mayflower, Mt. Vernon/Enola, Nemo Vista, Perryville, Pottsville, Quitman, Russellville, Shirley, South Conway County, South Side, Two Rivers, Vilonia, West Side, Western Yell County, Wonderview

**GOAL:**

- To deliver appropriate educational services to students in grades K-12 who possess talents and gifts evidenced by the interaction of above average intellectual ability, task commitment, motivation, and creative ability to help students realize their potential.
- To ensure the identification of gifted and talented students who possess high potential or ability and learning characteristics and educational needs which require qualitatively differentiated educational experiences and/or services in grades K-12.
- To ensure that G/T teachers and Coordinators are provided with support and opportunities for professional growth.
- To provide administrative training for G/T Coordinators in instructional leadership.
- To offer technical assistance to G/T Teachers and Coordinators in areas of concern including curriculum, technology, and state standards for G/T education.
- To provide professional development to help schools meet the educational needs of gifted and talented students
- To be a liaison with the OGTAP/ADE, schools, parent and professional groups, public and private agencies, and to conduct public awareness and advocacy programs.
- To organize student activities that will benefit all students in cooperative area schools.
- To provide Advanced Placement information and training to AP and Pre-AP teachers and Advance Placement coordinators.

**PROGRAM SUMMARY:**

Assistance is provided to local school district administrators and gifted and talented district coordinators and teachers through consulting and training services including meetings at the Co-op, visits to schools, and staff development in-service training. Supervision is provided to assure that services to students are delivered, school records are accurate, and school GT Action plans are in compliance. The specialist serves as the liaison with ADE/OGTAP office and works closely with the state AGATE (Arkansans for Gifted and Talented Education) and AAGEA (Arkansas Association of Gifted Educational Administrators) organizations to develop public awareness and student programs. The Specialist provided professional learning opportunities to support the delivery of G/T services during the 2010-2011 year including the following programs:

- Secondary Course Content Workshop-Provided secondary teachers who have G/T students in their classrooms with strategies to provide differentiated curriculum for those students. Secondary teachers in the core disciplines are required to take this workshop.
- Pre-AP College Board Training for Strategies in English and Social Sciences-This workshop provides teachers with strategies in English and the social sciences to prepare students to be successful when they take Advanced Placement courses.
- Pre AP College Board Training for Mathematics-This workshop provides teachers with strategies in mathematics to prepare students to be successful when they take Advanced Placement courses.
- Quiz Bowl information and coaches' meetings-Information about how to conduct and coordinate quiz bowl tournaments and prepare students for competition is provided to participating schools in the cooperative area.

### **Major Highlights of the Year:**

- G/T Coordinators met six times this year for ADE updates and instructional leadership training
- Advanced Placement Coordinators met for ADE updates and training
- Attended fall AAGEA Conference, attended and presented at AGATE Conference
- Sponsored four Regional Quiz Bowls in the cooperative area, and the Final Quiz Bowl for cooperative
- Attended all school monitoring visits by ADE/OGTAP
- Set up a wiki for G/T teachers to share information and files
- Set up a webpage of reviewed and categorized resources for G/T programs
- Writers In The Schools Program conducted by University of Arkansas at Fayetteville Graduate Candidates in Creative Writing
- Provided resources and support for G/T teachers in meeting the needs of secondary G/T students
- AAGEA, AR Association Gifted Education Administration
- 18<sup>th</sup> Annual Elementary Chess Tournament
- Promoted Advanced Placement and Pre-Advanced Placement courses and programs
- Visited all participating schools in the cooperative

**PROGRAM:** K-12 Mathematics Program

**FUNDING SOURCE:** Arkansas Department of Education, K-12 Mathematics Specialist Grant

**COMPETITIVE GRANT:** YES\_\_ No X

**RESTRICTED** X **NON-RESTRICTED**\_\_

**PARTICIPATING DISTRICTS:**

Heber Springs, Quitman, West Side Greer’s Ferry, Nemo Vista, South Conway County, Wonderview, Conway, Greenbrier, Guy-Perkins, Mayflower, Mt. Vernon –Enola, Vilonia, East End Bigelow, Perryville, Atkins, Dover, Hector, Pottsville, Russellville, Clinton, Shirley, South Side Bee Branch, Danville, Dardanelle, Two Rivers, Western Yell, Academics Plus

**PERSONNEL:**

Nancy Via, K-12 Mathematics Specialist , MSE  
Janis Winfrey, Administrative Assistant

**GOAL:**

To promote and support effective, research-based mathematics practices for all students by providing professional learning opportunities and technical assistance to teachers, math coaches, curriculum specialists, administrators, school improvement team members, instructional assistants, mathematics interventionists, parents, SPED, and Title I math teachers in the area of standards-based mathematics curricula, instruction, and assessment.

**PROGRAM SUMMARY:**

Arch Ford Education Service Cooperative, in partnership with the Arkansas Department of Education, administers the Mathematics Program for grades K-12, established by ACT 1392 of 1999 for the improvement of mathematics instruction throughout Arkansas. Assistance is provided to schools through professional learning programs, demonstration lessons, teacher observations, technical assistance, and teacher/administrator conferences in order to improve the teaching and learning of mathematics through increased content understanding and improved instructional strategies across the curriculum. Professional learning opportunities offered in 2011-2012 include:

- **Grades K-3 Cognitively Guided Instruction:** This statewide initiative utilizes a research-based framework designed around how elementary school children learn concepts of number, operations, and early Algebra. The goal of this training is for teachers to learn how to utilize this framework to inform their mathematics instruction. Teachers learn to analyze and write mathematically demanding story problems and number sentences in order to assess and further students’ understanding of concepts and skills. Attention is also focused on how to recognize student responses in terms of cognitive development, facilitate discussions that will provide a window into children’s thinking, strengthen children’s ability to reason about arithmetic, and build students’ capacity for algebraic reasoning.

- **Grades 4-6 Thinking Mathematically:** Over 25 years of research has shown that students learn with understanding if and only if new concepts are connected to what they already know. This yearlong training for mathematics teachers is an extension of CGI to promote student thinking around fractions, decimals, proportional reasoning and algebra and build on what students already understand about whole number and whole number operations.
- **Beginning Summer 2012 Grades 3-6 Extending Children's Mathematics:** This long-term PD offering extends work from students work with whole numbers into fractions and decimals. The training provides insights into children's thinking and innovative approaches to solving problems by: building meaning for fractions and decimals through discussing and solving word problems, the progression of children's strategies for solving fraction word problems and equations from direct modeling through relational thinking, and designing instruction that capitalizes on students' relational thinking strategies to integrate algebra into teaching and learning fractions.
- **Lesson Study:** This model modified to support teachers in long-term professional development such as CGI, ECM, and Common Core State Standards in Mathematics is utilized on a monthly basis to work with teams of teachers at their school site. In lesson study teachers look carefully at what is to be taught (content) and what lessons would best support the learning and how (pedagogy) the lesson should be taught, teachers collaborate with one another, work on lessons and refining lessons and analyze student work. Protocols are used flexibly to connect the complexities of teaching mathematics and students.

#### **MAJOR HIGHLIGHTS OF THE YEAR:**

- 150 teachers participating in long-term PD as detailed in the Program Summary.
- On-site support of long-term PD through monthly team meetings.
- Presented at CGI National Conference on the subject of team meetings.
- Presented at ACC Conference: 6 hour course on Common Core State Standards in Mathematics.
- Continued PD in CGI Leadership Cohort A.
- Provided Common Core State Standards in Mathematics PD to Curriculum, Principals, and Grade Level Teachers.
- Continued to support schools in school improvement.



**PROGRAM:** **Literacy**

**FUNDING SOURCE:** Arkansas Department of Education, Learning Services  
Division, K-12 Literacy Unit

**COMPETITIVE GRANT:** Yes \_\_\_ No X

**RESTRICTED** X **NON-RESTRICTED** \_\_\_

**PARTICIPATING DISTRICTS:** Statewide

**PERSONNEL:** Jackie S. Roberts, K-12 Literacy Professional Development Coordinator, MSE

**GOAL:**

- To oversee the work of the four state core literacy writing teams as they develop high quality professional development.
- To oversee the work of twelve teams as they develop statewide online literacy courses and summer professional development.
- To develop professional development that is based on scientifically based reading research (SBRR) and the Common Core State Standards (CCSS).
- To provide professional development to state and coop literacy specialists that allow them to support teachers as they implement scientifically based reading instruction (SBRI).
- To ensure that statewide literacy professional development supports literacy specialists and teachers as they use research based practices to enable all students to meet the state standards in literacy.

**PROGRAM SUMMARY:**

The K-12 Literacy Professional Development Coordinator (LPDC) supervises and coordinates the efforts of the four literacy core teams as they plan and write statewide professional development. The four teams who are currently writing professional development are:

1. ELLA (Early Literacy Learning in Arkansas) Core Team
2. ELF (Effective Literacy) Core Team
3. CLASS (Comprehensive Adolescent Literacy for Student Success) Core Team
4. Disciplinary Literacy Core Team

ELLA is a two-year professional development opportunity for K-1<sup>st</sup> grade teachers. ELF is a two-year professional development opportunity for grades 2-4 teachers. Both the ELLA and ELF professional development trainings are being revised to meet student instructional needs as well as reflect the state adopted Common Core State Standards. CLASS is a new state literacy program that has been designed as a two-year professional development opportunity for secondary English Language Arts teachers. The Disciplinary Literacy professional development training has been written to reflect the Common Core State Standards that are directed to secondary content area teachers. All four professional development opportunities are available for 2012 summer training.

In addition to coordinating the efforts of the state core teams, the K-12 PDLC oversees the Training of Trainers (TOT) for each piece as it is written and readied for state dissemination. Further, the K-12 Literacy Professional Development Coordinator ensures fidelity to statewide

literacy professional development by attending ELLA, ELF, CLASS, and Disciplinary Literacy trainings across the state.

The K-12 LPDC provides professional development and materials for the Arkansas Literacy Unit, which consists of the state cooperative literacy specialists, Reading Recovery Teacher Leaders, and ADE literacy specialists. The monthly trainings are based on state data that indicates the support teachers need in order to meet the instructional needs of their students as they transition to the CCSS.

Further, twelve literacy teams have been formed to develop professional development based on the identified "big shifts" of the Common Core State Standards. The professional development opportunities include online moodle courses and one-day informational sessions. The K-12 LPDC oversees this effort by ensuring the courses are ready for posting, submitting them to the Distance Learning Coordinators, and reviewing the courses once they are posted. In addition, the K-12 LPDC reviews and attends the one-day professional development opportunities.

### **MAJOR HIGHLIGHTS OF THE YEAR:**

Provided the following professional development opportunities:

- Common Core State Standards (CCSS) Professional Development – all state and coop literacy specialists, ongoing
- Training of Trainers sessions for all state and coop literacy specialists as well as onsite school-based trainers
- One day professional development sessions that are posted on the AETN training site
- Assisted in the statewide CCSS Literacy CIVs

Support for the Core Literacy Writing Teams:

- Provided professional development opportunities for each team member
- Provided all literacy core team leaders professional development through the Learning Forward Virtual Conference
- Provided materials and texts for the core team members and leaders
- Reviewed all professional development before releasing it to state, coop, and onsite school-based specialists

Core Literacy Team Accomplishments:

- ELLA two-year professional development is completely revised to reflect the transition to the CCSS
- ELF two-year professional development is completely revised to reflect the transition to the CCSS
- CLASS two-year professional development has completed Days 1-6 to enable specialists to continue to deliver the training
- Content Literacy core team has developed eight days of training to be delivered in the summer, 2012 by science and literacy specialists

Support for the Twelve Literacy Writing Teams:

- Provided professional development opportunities in writing online courses for each team member
- Provided specialized CCSS professional development for each team
- Provided technology professional development for the team leaders

Literacy Team Accomplishments:

- Developed twelve online moodle courses that will be ready for release in fall, 2012
- Developed and presented twelve days of literacy training for summer, 2012

**PROGRAM:** Literacy Support

**FUNDING SOURCE:** Arkansas Department of Education, Learning Services Division  
K-12 Literacy Unit

**COMPETITIVE GRANT:** Yes \_\_\_ No x

**RESTRICTED FUNDING** X **NONRESTRICTED FUNDING** \_\_\_\_\_

**PARTICIPATING DISTRICTS:** Atkins, Clinton, Conway, Danville, Dardanelle, Dover, East End, Greenbrier, Guy-Perkins, Heber Springs, Hector, Mayflower, Mt. Vernon/Enola, Nemo Vista, Perryville, Pottsville, Quitman, Russellville, Shirley, South Conway County, South Side, Two Rivers, Vilonia, West Side, Western Yell County, Wonderview

**PERSONNEL:**

Teresa Parish, Literacy Specialist, MSE.  
Cheryl Laughinghouse, Literacy Specialist, MSE  
Tanya Newton, Literacy Specialist, B.S.  
Nina Magie, Literacy Specialist, MSE  
Janis Winfrey, Administrative Assistant

**GOAL:**

- To enhance teacher awareness and implementation of current best practices through high quality professional development
- To meet the needs of students through integrated assessment and responsive instruction
- To ensure that all students are meeting the state and national standards in literacy

**PROGRAM SUMMARY:**

Early Literacy Learning in Arkansas (ELLA) is a two-year professional development designed to assist teachers in K-1 for implementing a comprehensive literacy classroom.

Effective Literacy (ELF) is a two-year professional development designed for grades 2-4 to implement a comprehensive literacy approach in instruction, assessment and intervention.

Smart Step Next Step focuses on content strategies for grades 5-8. It provides the same intense professional development for teachers and administrators at the middle school level as well as additional materials and assistance.

K-12 Instructional Facilitating professional development is designed to support implementation of instructional facilitators in Arkansas schools through embedded professional learning at designated sites.

**Major Highlights of the Year:**

The Literacy Department has supported schools in a variety of ways including:

- Curriculum Alignment
- Site-based literacy training in Effective Literacy

- Team Meetings/Professional Learning Communities
- Formative Assessments
- Summative Assessments
- Data Analysis
- Classroom Observations utilizing protocols
- District leadership Team meetings for Smart Accountability Schools
- Lesson Planning
- Demonstration Lessons with Debriefing with staff
- Research-based Best Practice
- Common Core
- Root Cause Analysis
- Administrator Book Studies
- Site-based Support for Instructional Facilitators (Yrs. I & II)
- Literacy Lab Implementation Support

**PROGRAM:** Local Facilities Partnership Funding

**FUNDING SOURCE:** Combined Participating Local School Districts

**COMPETITIVE GRANT:** Yes \_\_\_\_\_ No  X

**RESTRICTED FUNDING** \_\_\_\_\_ **NONRESTRICTED FUNDING**  X

**PARTICIPATING DISTRICTS:**

Atkins, Clinton, Danville, Dardanelle, Dover, East End, Greenbrier, Guy-Perkins, Heber Springs, Hector, Mayflower, Mt. Vernon-Enola, Nemo Vista, Perryville, Pottsville, Quitman, Russellville, Shirley, South Conway, South Side, Two Rivers, Western Yell County, Wonderview

**PERSONNEL:** Darrell Tessman, Facilities Coordinator, B. S.  
Teresa Vincent, Administrative Assistant

**PROGRAM SUMMARY:**

The Facilities Coordinator serves as liaison between the school districts and the Division of Public School Academic Facilities and Transportation to assist in preparing and submitting the six year Facilities Master Plan and Partnership Project Applications.

**PROGRAM GOALS:**

- Maintain working knowledge of district growth trends, wealth indexes, and facilities' needs.
- Understand and disseminate current laws and regulations pertaining to school facilities.
- Work with superintendents and architects to ensure that all building projects meet or exceed the standards required by the Division.
- Complete and submit the Facilities Master Plan for each district in even numbered years and update the Facilities Master Plan for each district in odd numbered years.
- Complete and submit Partnership Applications and other forms required by the Division.
- Upload Master Plans, updates, and Partnership applications to the Division website.
- Provide training as needed.
- Provide technical support for Schooldude corrective and preventative maintenance work orders.
- Help districts prepare appeals to take to the commission if needed.
- Process and submit Partnership Project pay applications.
- Work during legislative sessions on behalf of the districts in relation to facilities concerns and other areas upon request.

**MAJOR HIGHLIGHTS OF THE YEAR:**

- Applied for Partnership Project State Participation for an estimated construction value of \$37,017,917.
- Implemented digital storage and archival of District Master Plan documentation.
- Started performing Partnership Project payment applications for districts.

- Hosted School Dude training for the Arkansas Public School Academic Facilities and Transportation Division.
- Hosted asbestos training by Rylant Asbestos.
- Assisted Arkansas Public School Academic Facilities in the process of the newly implemented Master Plan Update Consultations.
- Assisted Arkansas Public School Academic Facilities in changes to be made in the Master Plan and Partnership Project process and software.

## **PROGRAM: Professional Development/Teacher Center**

### **FUNDING: Combined Local School Districts and ADE**

**PERSONNEL:** Lenett Thrasher, Teacher Center Coordinator, MSE  
Ginny Huckaba, Professional Development Specialist  
For School Improvement, MSE  
Shirley Standridge, Administrative Assistant

### **RESTRICTED FUNDING**

#### **PROGRAM GOALS:**

To provide professional development for administrators, teachers, and other district personnel to increase student achievement and effective school reform  
To support school improvement initiatives generated by the Arkansas Department of Education  
To enhance program integration through effective communication and technical support

### **PROFESSIONAL DEVELOPMENT/TEACHER CENTER**

This office has the responsibility of looking at the "Big Picture" of K-12 professional development that supports and enhances school improvement for all 26 districts within our Cooperative region. The 2011-2012 school year was spent responding to the needs of schools in the areas of curriculum, instruction, and assessment. A list of workshops provided during the year is included in this annual report.

One of the main focus areas for this school year was extensive training of the Common Core State Standards (CCSS) which are to be fully implemented K-12 in the next three years. Our specialists received training through the Arkansas Department of Education. This learning was then transferred to our school district staff members through a variety of workshops offered at Arch Ford by the specialists and guest presenters. Grade band CCSS trainings in literacy and math were provided for curriculum coordinators, administrators, and lead teachers in the fall and winter months and grade level training days were provided for teachers in the spring. This training will continue in the years to come to ensure effective implementation of the Common Core State Standards and assessment of those standards through the Partnership of Assessment for Readiness of College and Career (PARCC).

Understanding the importance of Professional Learning Communities (PLC) and the benefits of this type of organizational structure was another focus area of training for the 2011-2012 school year. Tom Many provided an outstanding training opportunity for our district staff members. This type of structure will be of benefit in transitioning into new initiatives such as the Common Core State Standards Initiative and the Teacher Evaluation System.

This year was also spent continuing the state Smart Accountability process. The Arkansas Department of Education and Arch Ford specialists worked together to assist schools in need of support through the process. One of the cooperative districts received extensive assistance through Classroom Walk Through trainings throughout the year to determine specific areas in need of improvement. The ultimate goal is for these buildings to be moved out of school improvement status.

Some of the districts in the Arch Ford region were fortunate enough to be able to employ instructional facilitators for their building(s) or district. Instructional facilitators receive training and support throughout the school year at the cooperative so they may be of greater benefit in improving instruction in their building(s).

The staff members of the professional development team at Arch Ford will continue to support school improvement efforts through training in CCSS and PARCC, adolescent literacy (CLASS) as well as literacy at all levels, extensive math trainings such as Cognitive Guided Instruction (CGI) and Thinking Mathematically (TM), classroom management, high yield instructional strategies, instructional technology, Teacher Excellence Support System (TESS), and administrative leadership. These trainings will be the focus of our summer trainings and will continue throughout the coming year. Additionally, trainings will continue to be available in assisting schools through organizing PLC's which will enable them to have job embedded professional development to support new learning and professional growth.



**PROGRAM:** Pathwise Mentoring Training

**FUNDING SOURCE:** ADE Grant

**COMPETITIVE GRANT:** Yes\_\_\_ No x

**RESTRICTED FUNDING** X **NONRESTRICTED FUNDING** \_\_\_\_\_

**PARTICIPATING DISTRICTS:**

**PERSONNEL:** Lenett Thrasher, Teacher Center Coordinator Ed.S.  
State Trainers

**PROGRAM SUMMARY:**

The Arkansas Department of Education implemented a new online process for gathering information for the Pathwise Mentoring program this school year. The online program is called ATLAS and it was the major focus for all districts in the state to transition to. Training sessions were held to recalibrate all trained mentors in the new system.

Arch Ford Education Service Cooperative made it a priority to assist all 26 districts in bringing their Beginning Teacher Mentor Program up to date with the current online system.

New mentor training was also held which provided understanding of the elements of the Pathwise Mentor process along with how to utilize the new online system for gathering and reporting information to the state.

Arch Ford conducted a "Preparing for the Praxis III" workshop to assist new teachers and their mentor in getting ready for the final step in the process of receiving a standard license.

The Pathwise Mentoring Program at Arch Ford Cooperative will continue to support participating districts in creating and sustaining a successful mentoring program for new teachers to the profession

**GOAL:**

- Provide teacher training in the elements of the Pathwise system
- Provide support for both mentors/mentees in preparation for the Praxis III
- Support state mandates for Beginning Teacher Licensure
- Provide recalibration training for existing mentors

**PROGRAM:** **Science K-12 Supervisory**

**FUNDING SOURCE:** Arkansas Department of Education, K-12 Science Specialist Grant

**COMPETITIVE GRANT:** Yes \_\_\_\_\_ No X

**Participating Districts:** Atkins, Clinton, Conway, Danville, Dardanelle, Dover, East End Bigelow, Greenbrier, Guy-Perkins, Heber Springs, Hector, Mayflower, Mt. Vernon-Enola, Nemo Vista, Perryville, Pottsville, Quitman, Russellville, Shirley, South Conway County Morrilton, South Side Bee Branch, Two Rivers, Vilonia, West Side Greer's Ferry, Western Yell County, and Wonderview.

**RESTRICTED FUNDING** X **Non-restricted Funding** \_\_\_\_\_

**PERSONNEL:** Madelon Cheatham, K-12 Science Instructional Specialist, B.A., M.Ed.

**GOAL:**

- The goal of the science program is to increase the content knowledge and strengthen the professional practice of teachers through research-based professional development programs and technical support in the classroom, and to promote awareness of the importance of science literacy among all students in Arkansas.

**PROGRAM SUMMARY:**

The science program was established at Arch Ford Educational Service Cooperative to provide teachers with professional development opportunities and classroom assistance. .

- Professional development enables teachers to refine content knowledge, learn new technologies, develop standards based curricula, and enhance their understanding of pedagogical knowledge.
- The science webpage provides external links to science resources and the Arch Ford Science Newsletter is posted monthly to provide up-to-date information related to state-wide events, grant opportunities, and science teaching strategies.
- Collaboration with state specialists and other governmental agencies broadens the base of knowledge related to science and other disciplines available to all teachers.
- Science coaching provides site-based classroom support, modeling and team-teaching, assistance with parental involvement activities, and development of professional learning communities.
- Standards-based lessons designed and provided to teachers encourage the use of student-centered inquiry teaching and provide cross-curricular connections to math and literacy to promote independent, goal-directed learning.
- Technical support and programs targeted to the needs of the individual district are developed and provided by request.

**MAJOR HIGHLIGHTS OF THE YEAR:**

**Science and Literacy Professional Development:** Training in content literacy related to Common Core Standards for Science was implemented for area teachers and additional trainings were developed for the coming year. The *Picture Perfect Science Series* provided training in the blending of inquiry science with literacy strategies for primary teachers in grades K-6.

**Dardanelle Science Professional Learning Community** – In collaboration with the Dardanelle Curriculum Supervisor a professional learning community was developed for science teachers in grades 3 through 8. Teachers established goals related to increased use of inquiry science, and a laboratory format was designed to build student understanding through the year. Observations and model lessons were conducted during the school year to assist teachers in refining their use of the inquiry process in the classroom.

**Science Coaching** – Team-teaching, modeling, observations and curriculum planning meetings provided teachers with ideas and strategies to redesign science lessons to encourage student questioning and responsibility. Over 60 school-site visits were made during the 2011-2012 school year.

**Arch Ford Science Fair for Grades 4-6:** Service area schools are provided with training and information on preparing science projects for a science fair competition hosted by Arch Ford. Participation in the science fair encourages students to develop critical thinking skills, an understanding of the scientific process, and independent project development.

**Next Generation Science Standards Implementation Team:** All Arkansas Science Specialists collaborated to design state-wide trainings for teachers in grades K-8 to provide information on the architecture and goals of the Next Generation Science Standards and their projected impact on classroom teaching and student achievement.

**Instructional Facilitation:** Based on the principles of instructional coaching developed by Stephen Barkley and Jim Knight, this on-going training provided practical information and strategies for school-based instructional facilitators. Professional development and site visits were provided to participants.

**PROGRAM: SPECIAL EDUCATION -  
Special Education Supervision  
School Psychology Specialists/Educational  
Appraisal**

**FUNDING SOURCE: Local School districts**

**COMPETITIVE GRANT: Yes\_\_ NO\_X**

**RESTRICTED FUNDING\_\_X\_\_\_\_\_ NONRESTRICTED FUNDING\_\_\_\_\_**

**PERSONNEL:**

Jon Rainbolt	Sp. Ed. Coordinator/Supervisor, MSE
Angela Toll	Sp. Ed. Supervisor, MSE
Kelli Rainey	Sp. Ed. Supervisor, MSE
Susan Lester	Sp. Ed. Supervisor, MSE
Tammy Rainey	Sp. Ed. Supervisor, MSE
Jill LaRosa	Sp. Ed. Supervisor, MSE
Loretta Solida	Sp. Ed./Appraisal Secretary
Karen McKnight	School Psychology Specialist, LPEI, SPS
Diana Holland	School Psychology Specialist, MSE
Amy Cunningham	School Psychology Specialist, LPE
Beth Varvil	School Psychology Specialist, LPE
Elissa Pittman	School Psychology Specialist, SPS

**PARTICIPATING DISTRICTS:** Atkins, Bauxite, Concord, Danville, Dardanelle, Dover, East End, Guy Perkins, Heber Springs, Hector, Mt.Vernon/Enola, Nemo Vista, Perryville, Pottsville, Quitman, Two Rivers, Western Yell County, West Side Greers Ferry, Wonderview

**GOAL:**

**Special Education Supervision**

- Provide technical assistance and support to local school district administrators and staff in assessing, developing, implementing and evaluation of special education programs and related services for purpose of improving student achievement.
- Provide technical assistance and support to local school district administrators and staff in developing leadership skills.
- To assist and support participating school districts in the provision of a Free Appropriate Public Education for suspected and identified students with disabilities, and in meeting state and federal mandates for services to these students.

**School Psychology Specialists/Educational Appraisal**

- To assist local districts in the identification of students with disabilities by conducting ADE required school psychology assessments/required evaluations.

- To provide local districts with support in identifying and programming for students in need of behavior intervention plans.

## **PROGRAM SUMMARY:**

### **Special Education Supervision**

Special Education Supervision provided to participating districts by Arch Ford Cooperative is designed to meet the ADE requirement of Local Education Agency (LEA) Special Education Supervisors on a service contract basis by allowing multiple districts to 'share' the cost of personnel and support for the LEA Supervisor. All six of the AFSC LEA Supervisors have individual areas of expertise and are accessible and available to all participating districts increasing district access to a range of quality and skill to support their students and staff. Each of the participating districts is assigned a 'lead' LEA Special Education Supervisor who ensures that the district meets the ADE and Federal Special Education mandated requirements in budgeting, financial reporting, child data submission, ADE Reporting, Program Evaluation and Development, Staff Development and Training Student Assessment and Evaluation, Student Data Analysis, Medicaid Eligibility and Billing, ARMAC Access and Reporting, Child Find Activities, ADE on and off site monitoring, Personnel Reporting, Fiscal and Academic Distress support plus student achievement/improvement and parent involvement and intervention. Access to the supervisory group assists both the assigned supervisors and local district staff in the activities that are required.

### **School Psychology Specialist/Educational Appraisal**

Local School Districts are required to have access to a school psychology specialist or qualified education examiner (an individual qualified to administer and interpret specific assessments) for conferences and evaluations, and to assist in developing and monitoring behavior intervention plans. To assist local districts and to control costs through 'cooperative' interaction, the AFSC employs five (5) school psychologists for these purposes. District staff schedule needed services through a cooperative staff member who assigns a specialist to each case.

## **MAJOR HIGHLIGHTS of the Year:**

### **Special Education Supervision**

- Successfully completed ADE Special Education Monitoring in four (5) Districts
- Participating in local Academic Distress support for two (2) districts due to students with disabilities
- Conducted monthly AFSC Service Area Service Provider meetings for school districts and service providers for students with disabilities.
- Provided AFSC Para Professional Training Modules for participating school district Para Professionals and separate training in evenings for Community School of Cleburne County staff.
- The six supervisors made regular visits (totaling more than 1150 school site visits to the 20 participating districts) to the local school staff (187 certified special education staff serving the over 2200 identified students with disabilities in the participating districts) during the school year.

- The six supervisors have conducted a total of 65 staff development sessions over the course of the year; organized, in conjunction with the ADE, the state wide Arkansas Council for Exceptional Children Conference held in Hot Springs in November of 2011 which had over 620 attendees from across the state focusing on the topic of 'Standards Based IEP's'.

### **School Psychology Specialist/Educational Appraisal**

- Conducted 697 Comprehensive Psychology Evaluations for local schools
- Observed 61 students for behavioral issues, developed behavior intervention plans with follow-up conferences and support for 56 students.
- Conducted specialized observations on 27 students.
- Attended Conferences on 155 students.
- Presented 25 staff development workshops, attended 8 professional trainings
- Consulted on 249 students.
- Met with Local Special education supervisors and other service providers at AFSC 5 times to discuss issues of mutual concern for the school districts.

**PROGRAM:** Target Testing

**FUNDING SOURCE:** Participating School Districts

**FUNDING AMOUNT:** Based on ADM and Grades/Subjects Tested

**COMPETITIVE GRANT** \_\_\_ Yes  X  No

**RESTRICTED**  X  **NON-RESTRICTED** \_\_\_

**PARTICIPATING DISTRICTS:**

Dardanelle, East End, Greenbrier, Mayflower, Mt. Vernon-Enola, Nemo Vista, Perryville, Pottsville, Shirley, South Side, Wonderview

**PERSONNEL:**

Dr. Linda Griffith	Advisor	Ph.D.
Lisa Bailey	Statewide Literacy Director	Masters
Jo Walker	Statewide Mathematics Director	Bachelors
Lenett Thrasher	AFESC Target Testing Coordinator	Ed.S.
Lori Winfrey	AFESC Target Testing Technical Assistant	BSE

**GOAL:**

To provide an economical means for schools to use formative assessments in literacy, mathematics, and/or science in grades 3 and up to measure and document student growth over the course of the year and to guide instruction.

**PROGRAM SUMMARY:**

Target Testing is an interim assessment project for schools that wish to periodically assess students in grades 3-12 in literacy, mathematics, and/or science objectives based on the Arkansas frameworks and Common Core State Standards. The information obtained by administering the 3 interim assessments is intended to be used formatively to allow teachers to intervene with some or all students where weaknesses are revealed. Pre- and post-assessments are available to help teachers and administrators plan for instruction at the beginning of a year, and measure and document student growth over the course of a year. A pilot group of districts tested online this year. In 2012-2013 all schools will be encouraged to test online based on the successful online testing in 2011-2012

**MAJOR HIGHLIGHTS OF THE YEAR:**

- Number of participating Coops = 13
- Number of participating Districts = 92
- Number of Students = 81,364

**PROGRAM:**                   **Technology**

**FUNDING SOURCE:**       Arkansas Department of Education Grant – Act 842 of 1995

**COMPETITIVE GRANT:**        Yes   X      No       

**RESTRICTED:**         X   **NON-RESTRICTED:**       

**PARTICIPATING DISTRICTS:**

Atkins, Clinton, Conway, Danville, Dardanelle, Dover, East End, Greenbrier, Guy-Perkins, Heber Springs, Hector, Mayflower, Mt. Vernon-Enola, Nemo Vista, Perryville, Pottsville, Quitman, Russellville, Shirley, South Conway County, South Side, Two Rivers, Vilonia, West Side, Western Yell, and Wonderview.

**PERSONNEL:**           Christy Trantina, Technology Coordinator, B.S.  
                          Lori Winfrey, Support Specialist , B.S.  
                          John Ross, Technician B.S.  
                          Beth Lee, Technician , B.S. – completes December 2012)

**GOAL:**

The goals of the Arch Ford Technology Department include the following:

- Manage and maintain a reliable local area network and technology equipment for AFESC employees.
- Keep AFESC employees informed of latest technology tools, topics, and trends.
- Provide technical support to AFESC member school districts upon request.
- Work closely with member district Technology Coordinators to keep them informed of technology information, mandates and initiatives from the state and national levels.
- Provide quality technology professional development to AFESC employees and member district personnel with a focus on classroom technology integration.

**PROGRAM SUMMARY:**

The technology department maintains the Arch Ford Cooperative LAN (local area network), providing reliable network connectivity and technical support to all AFESC employees. The technology coordinator assists employees with technology hardware and software purchases, and provides training on technology items as needed. Also, the technology department maintains the cooperative website, computer lab, 2 portable laptop sets, 2 Compressed Interactive Video systems, and updated presentation equipment in each workshop room.

The technology department provides our 26 member districts with support in various ways including: technical assistance with their LAN, consultation regarding hardware and software purchases, and providing professional development opportunities for administrators, teachers, and technology personnel.

The technology coordinator works closely with the Arkansas Department of Education, the Department of Information Services, and the Arkansas Public School Computer Network regarding technology initiatives to help AFESC staff and member districts remain informed and in compliance with technology requirements.



Technology professional development, with a focus on Instructional Technology / Classroom Technology Integration plays a large role in the duties of our technology department. During the school year, the technology coordinator facilitates meetings and trainings, and presents trainings as requested for AF staff and member district personnel. During the summer professional development session, a cadre of 9 teachers from within member districts present technology integration professional development sessions for AFESC area teachers.

### **MAJOR HIGHLIGHTS OF THE YEAR:**

- 47 technology professional development sessions were offered serving approximately 1025 teachers.
- In an effort to increase technology integration and 21<sup>st</sup> Century learning within AFESC member districts, the Arch Ford Technology Coordinator facilitates meetings and communication for the following groups from within AFESC member districts:
  - Technology Coordinators
  - Instructional Technology Coordinators
  - Library Media Specialists
  - Computer Lab Managers
- Approximately 200 emails were sent to various listservs (principals, technology personnel, teachers, library media specialists) disseminating information regarding K12 technology.
- 2 AFESC technicians worked in 5 member districts on a weekly basis providing technical assistance.
- During the 2011-12 school year, a Technology Integration Cadre was formed, consisting of 2 teachers from 24 member school districts. The purpose of this group is to develop the technology skills of cadre members who can then offer quality technology professional development to fellow teachers at the local districts. This effort proved to be successful, and the same group of teachers will continue with more technology training through the 2012-13 school year.

## SPECIAL PROJECTS & PROGRAMS

**FUNDING SOURCE:** Arkansas Department of Education

**RESTRICTED**  **NON-RESTRICTED**

**Detailed below are special projects or programs in which state funding provide services regionally or statewide. For each special projects of program a brief description is given.**

**Program Name:** *Algebra II – National Training by Teachscape*

**Competitive Grant:** Yes  No

**Goals and Description:** The goal of this training was to engage participants in collaborative, reflective learning utilizing the new *Teachscape* Algebra II modules. These seven modules, posted on the Arkansas IDEAS Portal, include: Quadratic Functions for Algebra II; Transformations of Quadratic Functions; Linear Functions and Inequalities for Algebra II; Linear Systems; Proportional Reasoning; Data Analysis; and Transformations of Linear Functions. Participants utilized the Arkansas student achievement data to delve deeply into the modules based on identified areas of need. A fully blended approach of face-to-face learning and online resources was modeled by the facilitator with accessing the available resources appropriately and efficiently as a training priority.

**Program Name:** *CGI-Cognitively Guided Instruction*

**Competitive Grant:** Yes  No

**Goals and Description:** Cognitively Guided Instruction (CGI) is a teacher professional development program that has teachers exploring a framework for how elementary school children learn concepts of number operations and early algebra. This knowledge is used to drive instruction. Years 2 & 3 of training builds upon the previous year's training—resulting in a true, long-term sustained professional development program. What teachers learn in a CGI institute enhances how they implement any curriculum or resource materials into their daily classroom instruction.

**Program Name:** *English as a Second Language Professional Development*

**Competitive Grant:** Yes  No

**Goals and Descriptions:** The goal of this program is to provide professional development to LEA personnel, including teachers, administrators, counselors, and others serving English Language Learner (ELL) students. Workshops, conferences, technical assistance is provided to LEAs with ELL enrollments. A two-week ESL Academy is provided in the summer serving over 300+teachers leading to an ESL teacher license endorsement.

**Program Name: *Enhancing Education Through Technology Grant (TIE) Project***

**Competitive Grant:** Yes  No

**Goals and Description:** The purpose of the TIE project is to increase technology integration across the state of Arkansas. Southwest Arkansas Education Co-op wrote a comprehensive partnership EETT grant to develop a statewide professional development module system to embrace all forms of technology, meet the needs of teachers and administrators, and address State standards and licensure issues while enhancing instruction through integrated technology practices. All education cooperatives across the state were offered the opportunity to train teachers from their area to become TIE Cadre members. There are currently 114 TIE Cadre members impacting 71 districts and 80 buildings across the state. Cadre members have conducted over 300 workshops across the state on 72 different technology modules. The trainings have impacted 5,000 teachers and administrators. The modules are all project based and have been developed by teachers. Modules include trainings on things such as Blogs, Classroom Wikis, High Yield Strategies with Technology, Internet Safety, Podcasting and Video Editing. Modules are housed on the TIE website at <http://tie.k12.ar.us>. By sharing these modules across the state, we are able to offer the same quality in technology trainings that we did not have before. The cadre members not only train for the education co-ops in the summer but are also able to help train in their buildings and districts. Module development and professional growth are the focus of cadre trainings.

**Program Name: *Enhancing Education Through Technology (EETT) Project Grant***

**Competitive Grant:** Yes  No

**Goals and Description:** Goals include improving student achievement, increasing technology literacy of students, increasing student use of technology, and integrating technology throughout the curriculum. Geometry teachers were trained in the use of the **INTERWRITE**MOBI™ technologies. Students now have out-of-school access to lessons by downloading them to laptops or handheld technology devices (iPod or Notebooks).

The Northeast Arkansas Education Cooperative received its first statewide grant in 2009-2010 for the EETT Project. This project was funded by the American Recovery and Reinvestment Act. Improving Algebra and Geometry mathematics instruction is a critical priority across Arkansas. Beginning in 2007-2008 a successful interactive technology initiative began with EETT grant funding to begin the development of interactive high school mathematics lessons. These lessons address the Arkansas Mathematics Standards and Student Learning Expectations utilizing the interactive technology with the Interwrite pad. After two years of successful implementation, this initiative is prepared to be implemented as a 2009 statewide project. The EETT project will expand the development of interactive Algebra and Geometry SLE lessons to over 200. This will be accomplished through the involvement of experienced NEA Education Cooperative math classroom teachers and NEA Education Cooperative personnel. Fourteen (14) Arkansas Education Cooperatives and the Little Rock School District have requested to be partners in this 2009 project.

**Program Name: *Gizmo***

**Competitive Grant:** Yes  No

**Goals and Description:** Gizmos are interactive online simulations for math and science education in grades 3-12. They are fun, easy to use, and help students develop a deep understanding of challenging concepts through inquiry and exploration. Gizmos are [research-based](#), flexible tools used by teachers across all 50 states in a wide variety of ways. Gizmos are ideal for small group work, individual exploration, and whole class instruction using an LCD projector or interactive whiteboard. The ADE provided Gizmo accounts for teachers and students in grades 6-8 for math and science. Cooperatives across the state have provided professional development training in the use of Gizmos. Usage reports are provided for schools and districts.

**Program Name: *Instructional Facilitating***

**Competitive Grant:** Yes  No

**Goals and Description:** Instructional Facilitating Training is based on Dr. Jim Knight's Instructional Coaching Institute from the University of Kansas Center for Research on Learning. The training will refine the Instructional Facilitator's understanding of their various roles and distinguish between effective and ineffective coaching practices. The training will also provide leadership skills for leading reform, give direction on fostering internal commitment in others, and determine when it is or is not appropriate for modeling in a classroom  
Enhancing Education Through Technology Grant: Technology Infused Education (TIE) Project

**Program Name: *Literacy Decision Makers***

**Competitive Grant:** Yes  No

**Goals and Description:** The purpose of this grant was to provide funding to support Literacy Decision Makers Training sessions and regional Smart Accountability sessions.

**Program Name: *Literacy Unit Meetings***

**Competitive Grant:** Yes  No

**Goals and Description:** The Literacy Unit Meetings take place monthly for all state literacy specialists to convene as a professional learning community. This time is built by a state level team to brainstorm, share, execute, and receive professional development that is data driven to impact student achievement. Training of trainers in ELLA, ELF, C.L.A.S.S, Content Literacy, and other state level trainings have taken place over the last year. Currently, an in depth study of the Common Core State Standards continues as school districts in Arkansas ready for implementation with dedicated support from the specialists.

**Program Name:** *Math Unit Meetings*

**Competitive Grant:** Yes \_\_\_ No x

**Goals and Description:** Math Unit meetings are organized so that K-12 Mathematics Specialists from all cooperatives and STEM centers convene on a monthly basis as a professional learning community. Mathematics specialists receive professional development that is current, research based, and data driven. The meetings also provide time for mathematics specialists to set goals, write statewide PD, and assess impact on existing programs. Currently, an in depth study of the Common Core State Standards continues as school districts transition from our current frameworks to the Common Core in Mathematics.

**Program Name:** *Primary Literacy*

**Competitive Grant:** Yes \_\_\_ No x

**Goals and Description:** This session provided opportunity for participants to engage in collaborative and reflective learning designed to support Reading Coaches and other teacher leaders in their work with peers. The Teachscape Catalog of resources on the Arkansas IDEAS Portal includes a total of over twenty different modules in the following four categories: Foundations of Reading and Writing; Advanced and In-Depth Reading Courses; Data Analysis and Planning Courses; and In-Depth Reading Courses. These modules have been developed based on the research spearheaded by the National Reading Panel. The Partnership for Reading is a collaborative effort by three federal agencies - the National Institute for Literacy (NIFL), the National Institute of Child Health and Human Development (NICHD), and the U.S. Department of Education. The intended outcomes are to support participants in their daily work by providing effective strategies and instructional solutions that utilize the available resources.

**Program Name:** *Smart Accountability Leadership*

**Competitive Grant:** Yes \_\_\_ No x

**Goals and Description**

To support Smart Accountability Leadership Training series, each cooperative had an opportunity to host a professional development session for district leadership teams provided by Dr. Tom Many. The leadership training focused on the specific use of professional learning teams to analyze student work and develop common assessments. The goal of this special project was to build leadership capacity of district leadership teams and to give district leadership teams tools needed to further extend the work done through PLCs to improve teaching and learning.

# Summary Attended

Printed Date: 5/16/2012 Last modified: 11/18/2005

## Report Description:

Count of attended participants grouped by session for a given time period or for a given owner.

Session	Credits	Districts	Attended
<b>AFESC--Superintendents' Meeting</b> 151459 - Jun 1, 2011 9:00 am - 12:00 pm	3.00	25	28
<b>AFESC--Building on the Exemplary Lesson Project Experience</b> 143330 - Jun 4, 2011 9:00 am - 3:30 pm	0.00	10	13
<b>AFESC--Pre-AP Strategies: AP Vertical Teams in English</b> 140638 - Jun 7, 8, 2011 9:00 am - 3:30 pm	12.00	2	5
<b>AFESC--Heartsaver AED</b> 140650 - Jun 7, 2011 8:30 am - 12:30 pm	4.00	3	6
<b>AFESC--Instructional Strategies in Career and Technical Education and Academic Classrooms</b> 141352 - Jun 8, 9, 2011 8:45 am - 3:30 pm	12.00	16	26
<b>AFESC--Teacher Evaluation Phase I Training</b> 148357 - Jun 8, 9, 10, 2011 8:30 am - 3:30 pm	18.00	8	21
<b>Lottery Training - One Hour Update and Initial Three Hour Training (CIV)</b> 139926 - Jun 9, 2011 8:30 am - 11:30 am	3.00	9	19
<b>AFESC--Instructional Facilitator Collaboration</b> 141078 - Jun 9, 2011 9:00 am - 3:30 pm	6.00	8	13
<b>AFESC--Pre-AP: Interdisciplinary Strategies in Science--Creating a Learner-Centered Classroom</b> 142870 - Jun 9, 10, 2011 9:00 am - 3:30 pm	12.00	11	16
<b>AFESC--Grades K-2 Math Transition to Common Core State Standards</b> 143175 - Jun 9, 10, 2011 8:30 am - 3:30 pm	12.00	22	76
<b>AFESC--Explicit Direct Instruction in Kindergarten and First Grade</b> 143180 - Jun 9, 2011 8:30 am - 3:30 pm	6.00	4	5
<b>AFESC--GRADES 5-8 Content Literacy: Summarization and Writing To Learn for History/Social Studies</b> 142248 - Jun 13, 2011 9:00 am - 3:30 pm	6.00	14	23

**Summary Attended**

Printed Date: 5/16/2012 Last modified: 11/18/2005

<b>Session</b>	<b>Credits</b>	<b>Districts</b>	<b>Attended</b>
<b>AFESC--Classroom Management: Laying the Foundation for Success</b> 143384 - Jun 13, 2011 9:00 am - 3:30 pm	6.00	25	96
<b>AFESC--Heartsaver AED</b> 140651 - Jun 14, 2011 8:30 am - 12:30 pm	4.00	4	4
<b>AFESC--Racing Through the WEB</b> 141467 - Jun 14, 2011 9:00 am - 3:30 pm	6.00	10	21
<b>AFESC--DIBELs Results and the RTI Process for Grades K-2</b> 143181 - Jun 14, 2011 8:30 am - 11:30 am	3.00	11	17
<b>AFESC--Powerful Teaching Strategies for Mathematics</b> 143385 - Jun 14, 2011 9:00 am - 3:30 pm	6.00	12	20
<b>AFESC--Bullying: A Learning Journey CIV</b> 140143 - Jun 15, 2011 9:00 am - 12:00 pm	3.00	13	29
<b>AFESC--Parental Involvement for Administrators CIV</b> 140144 - Jun 15, 2011 12:30 pm - 3:30 pm	3.00	10	12
<b>AFESC--Kuder Navigator: Best Practices</b> 141786 - Jun 15, 2011 12:30 pm - 3:30 pm	3.00	7	10
<b>AFESC--Kuder Navigator: New Users</b> 141794 - Jun 15, 2011 8:30 am - 11:30 am	3.00	7	7
<b>AFESC--Science and Literacy Connections: Grades 4-6</b> 142706 - Jun 15, 16, 2011 9:00 am - 3:30 pm	12.00	12	16
<b>AFESC--14 Things To Teach Your Students About Failure</b> 140157 - Jun 16, 2011 9:00 am - 12:00 pm	3.00	15	25
<b>AFESC--Teaching Online Communication Skills and Internet Etiquette</b> 140172 - Jun 16, 2011 12:30 pm - 3:30 pm	3.00	12	28
<b>AFESC--Kuder Navigator: Curriculum Manager</b> 141776 - Jun 16, 2011 8:30 am - 11:30 am	3.00	9	12
<b>AFESC--Adaptive Physical Education</b> 143514 - Jun 17, 2011 9:00 am - 12:00 pm	3.00	11	23
<b>AFESC--Classroom Strategies That Get Kids Moving!</b> 143515 - Jun 17, 2011 1:00 pm - 4:00 pm	3.00	14	29

**Summary Attended**

Printed Date: 5/16/2012 Last modified: 11/18/2005

<b>Session</b>	<b>Credits</b>	<b>Districts</b>	<b>Attended</b>
<b>AFESC--Cyber Rights and Wrongs: What Every Teacher Needs to Know!</b> 148443 - Jun 17, 2011 8:30 am - 3:30 pm	6.00	16	38
<b>AFESC--General Education and Special Education Working Together: Co-Teaching Workshop</b> 141257 - Jun 20, 2011 9:00 am - 3:30 pm	6.00	14	47
<b>AFESC--Windows 7/Office 2007</b> 143068 - Jun 20, 2011 9:00 am - 3:30 pm	6.00	11	22
<b>AFESC--Technology for Library Media Specialists</b> 143072 - Jun 20, 2011 9:00 am - 3:30 pm	6.00	16	24
<b>AFESC--Photography and Art Applications CIV</b> 140189 - Jun 21, 2011 9:00 am - 12:00 pm	3.00	14	25
<b>AFESC--From Mummies to Origami: Resources and Ideas for Art Instructors CIV</b> 140198 - Jun 21, 2011 12:30 pm - 3:30 pm	3.00	13	16
<b>AFESC--Heartsaver AED</b> 140652 - Jun 21, 2011 8:30 am - 12:30 pm	4.00	3	5
<b>AFESC--Literature? I Thought This Was A Math Class!</b> 141429 - Jun 21, 2011 9:00 am - 3:30 pm	6.00	12	31
<b>AFESC--Thinkfinity</b> 143088 - Jun 21, 2011 9:00 am - 3:30 pm	6.00	14	23
<b>AFESC--19th Century Arkansas History: Through the Lens of Historic Washington State Park CIV</b> 140214 - Jun 22, 2011 12:30 pm - 3:30 pm	3.00	18	32
<b>AFESC--Parental Involvement in Math Class</b> 141428 - Jun 22, 2011 9:00 am - 3:30 pm	6.00	12	28
<b>AFESC--Economics Resources from the Federal Reserve Bank</b> 144132 - Jun 22, 2011 9:00 am - 12:00 pm	3.00	8	12
<b>AFESC--Microscope Maintenance Workshop</b> 146318 - Jun 22, 2011 9:00 am - 3:30 pm	6.00	4	4
<b>AFESC--Special Education Law: Survival Kit</b> 140119 - Jun 23, 2011 9:00 am - 3:30 pm	6.00	16	48
<b>AFESC--Science: Project Wild</b> 142765 - Jun 23, 2011 9:00 am - 3:30 pm	6.00	14	15



**Summary Attended**

Printed Date: 5/16/2012 Last modified: 11/18/2005

<b>Session</b>	<b>Credits</b>	<b>Districts</b>	<b>Attended</b>
<b>AFESC--Windows 7/Office 2007</b> 143090 - Jun 23, 2011 9:00 am - 3:30 pm	6.00	9	23
<b>AFESC--Technology for Library Media Specialists</b> 143091 - Jun 23, 2011 9:00 am - 3:30 pm	6.00	18	24
<b>AFESC--Section 504: Survival Kit</b> 140122 - Jun 24, 2011 9:00 am - 3:30 pm	6.00	13	26
<b>AFESC--5-Star Science</b> 142862 - Jun 24, 2011 9:00 am - 3:30 pm	6.00	2	2
<b>AFESC--SMART Board Level 1</b> 143096 - Jun 24, 2011 9:00 am - 3:30 pm	6.00	11	23
<b>AFESC--So Many Books, So Little Time!</b> 140034 - Jun 27, 2011 9:00 am - 3:30 pm	6.00	26	78
<b>AFESC--Teaching Information/Explanatory Writing in the K-4 Classroom</b> 140656 - Jun 27, 2011 8:30 am - 3:00 pm	6.00	13	27
<b>AFESC--CGI Level 1 Days 1-4</b> 141625 - Jun 27, 28, 29, 30, 2011 8:30 am - 3:30 pm	24.00	11	31
<b>AFESC--GRADES 5-8 Content Literacy: Questioning and Vocabulary for History/Social Studies</b> 142249 - Jun 27, 2011 9:00 am - 3:30 pm	6.00	13	19
<b>AFESC--Google and Beyond</b> 143101 - Jun 27, 2011 9:00 am - 3:30 pm	6.00	10	16
<b>AFESC--Are We Having Fun Yet?</b> 140062 - Jun 28, 2011 9:00 am - 3:30 pm	6.00	18	30
<b>AFESC--Introducing Spanish Teaching Techniques</b> 140125 - Jun 28, 2011 9:00 am - 3:30 pm	6.00	6	6
<b>AFESC--Argumentative Writing</b> 141465 - Jun 28, 2011 9:00 am - 3:30 pm	6.00	14	29
<b>AFESC--Arkansas Geology: Rockin' and Rollin'</b> 142743 - Jun 28, 29, 2011 8:30 am - 5:00 pm	14.00	12	17
<b>AFESC--Wikis &amp; Blogs</b> 143111 - Jun 28, 2011 9:00 am - 3:30 pm	6.00	13	18

**Summary Attended**

Printed Date: 5/16/2012 Last modified: 11/18/2005

<b>Session</b>	<b>Credits</b>	<b>Districts</b>	<b>Attended</b>
<b>AFESC--Sounds 101/Video, Internet and Software Resources for the Music Educator</b> 140071 - Jun 29, 2011 9:00 am - 3:30 pm	6.00	11	15
<b>AFESC--Introduction to Conversational Spanish and Hispanic Culture</b> 140128 - Jun 29, 30, 2011 9:00 am - 3:30 pm	12.00	10	16
<b>AFESC--Effective Literacy for Administrators</b> 140657 - Jun 29, 2011 8:30 am - 3:00 pm	6.00	4	4
<b>AFESC--Google and Beyond</b> 143107 - Jun 29, 2011 9:00 am - 3:30 pm	6.00	8	19
<b>AFESC--G/T Curriculum Review for K-12</b> 148378 - Jun 29, 2011 8:30 am - 3:30 pm	6.00	16	17
<b>AFESC--Examining the Common Core State Standards</b> 140658 - Jun 30, 2011 8:30 am - 3:00 pm	6.00	25	96
<b>AFESC--Teaching the Gifted in the Secondary Content Classroom CIV</b> 140700 - Jun 30, 2011 8:30 am - 4:00 pm	6.50	10	17
<b>AFESC--SMART Board Level 1</b> 145896 - Jun 30, 2011 9:00 am - 3:30 pm	6.00	11	24
<b>AFESC--Parental Involvement: Working With Parents From Poverty</b> 140090 - Jul 5, 2011 9:00 am - 12:00 pm	3.00	18	62
<b>AFESC--Reaching "Screenagers" - How to Make Sense to a Social Networking Generation</b> 140103 - Jul 5, 2011 12:30 pm - 3:30 pm	3.00	18	31
<b>AFESC--Using Spreadsheets for Graphing and Data Organization</b> 143116 - Jul 5, 2011 9:00 am - 3:30 pm	6.00	10	14
<b>AFESC--DIAL 3 Training</b> 150205 - Jul 5, 2011 12:30 pm - 3:30 pm	3.00	8	16
<b>AFESC--Jump Over to Creativity</b> 140038 - Jul 6, 2011 9:00 am - 3:30 pm	6.00	11	16
<b>AFESC--From Poverty to Proficient: Strategies for Motivating Students with Barriers to Education</b> 140106 - Jul 6, 2011 9:00 am - 3:30 pm	6.00	20	34
<b>AFESC--CGI Level 3 Days 1-3</b> 141641 - Jul 6, 7, 8, 2011 8:30 am - 3:30 pm	18.00	7	27

**Summary Attended**

Printed Date: 5/16/2012 Last modified: 11/18/2005

<b>Session</b>	<b>Credits</b>	<b>Districts</b>	<b>Attended</b>
<b>AFESC--GRADES 9-12 Content Literacy: Summarization and Writing to Learn for History/Social Studies</b>			
142266 - Jul 6, 2011 9:00 am - 3:30 pm	6.00	11	15
<b>AFESC--ELLA Year 2 Days 9-11</b>			
143187 - Jul 6, 7, 8, 2011 8:30 am - 3:30 pm	18.00	11	31
<b>AFESC--SMART Board Level 2</b>			
148738 - Jul 6, 2011 9:00 am - 3:30 pm	6.00	3	3
<b>AFESC--Mandated Coach's Training CIV</b>			
150965 - Jul 6, 2011 10:00 am - 11:30 am	1.50	9	27
<b>AFESC--Slam Poetry and Poetry Out Loud</b>			
140042 - Jul 7, 2011 9:00 am - 3:30 pm	6.00	4	6
<b>AFESC--Introduction To The 6+1 Traits of Writing Model</b>			
140267 - Jul 7, 2011 9:00 am - 3:30 pm	6.00	11	14
<b>AFESC--NORMES Training</b>			
140280 - Jul 7, 2011 9:00 am - 3:30 pm	6.00	10	14
<b>AFESC--So Many Picture Books, So Little Time!</b>			
140299 - Jul 7, 2011 9:00 am - 3:30 pm	6.00	25	71
<b>AFESC--Explicit Direct Instruction for Teachers and Administrators</b>			
140662 - Jul 7, 2011 8:30 am - 3:00 pm	6.00	11	13
<b>AFESC--Science With The SMART Board</b>			
142678 - Jul 7, 8, 2011 9:00 am - 4:00 pm	12.00	15	23
<b>AFESC--AIP-IRI/ACSIP Using NORMES</b>			
140284 - Jul 8, 2011 9:00 am - 12:00 pm	3.00	9	12
<b>AFESC--Heartsaver AED</b>			
140653 - Jul 8, 2011 8:30 am - 12:30 pm	4.00	5	7
<b>AFESC--4th Annual Administrators' Institute--DAY 1</b>			
139580 - Jul 11, 2011 8:30 am - 3:30 pm	6.00	26	87
<b>AFESC--Grades 4-6 Thinking Mathematically Days 1-4</b>			
141871 - Jul 11, 12, 13, 14, 2011 8:30 am - 3:30 pm	24.00	11	28
<b>AFESC--4th Annual Administrators' Institute--DAYS 2&amp;3</b>			
139583 - Jul 12, 13, 2011 8:30 am - 3:30 pm	12.00	24	66

**Summary Attended**

Printed Date: 5/16/2012 Last modified: 11/18/2005

<b>Session</b>	<b>Credits</b>	<b>Districts</b>	<b>Attended</b>
<b>AFESC--Effective Literacy Year 2</b> 140663 - Jul 12, 13, 14, 2011 8:30 am - 3:00 pm	18.00	9	16
<b>AFESC--7/8 Grade Math Transition of Common Core State Standards</b> 141593 - Jul 12, 13, 2011 8:30 am - 3:30 pm	12.00	14	26
<b>AFESC--Hooked on Fishing, Not on Drugs</b> 142738 - Jul 12, 2011 9:00 am - 3:30 pm	6.00	10	15
<b>AFESC--Google Earth/GPS</b> 143120 - Jul 12, 2011 9:00 am - 3:30 pm	6.00	15	20
<b>AFESC--Arkansas Stories Throught the Arts CIV</b> 140933 - Jul 13, 2011 9:00 am - 12:00 pm	3.00	14	20
<b>AFESC--Science: Growing Up WILD</b> 142775 - Jul 13, 2011 9:00 am - 3:30 pm	6.00	16	24
<b>AFESC--Mathematics + Technology = Gearing up for Common Core in the Elementary School</b> 149886 - Jul 13, 2011 9:00 am - 3:30 pm	6.00	7	12
<b>AFESC--Teaching Online Communication Skills and Internet Etiquette</b> 140239 - Jul 14, 2011 9:00 am - 12:00 pm	3.00	8	15
<b>AFESC--Hands Around the World: Global Curriculum Projects CIV</b> 140242 - Jul 14, 2011 12:30 pm - 3:30 pm	3.00	5	6
<b>AFESC--GRADES 9-12 Content Literacy: Questioning and Vocabulary for History/Social Studies</b> 142299 - Jul 14, 2011 9:00 am - 3:30 pm	6.00	8	10
<b>AFESC--Pathwise Recalibration</b> 143254 - Jul 14, 2011 9:00 am - 3:30 pm Mentoring Coaching	6.00	15	34
<b>AFESC--SMART Response Training for Career &amp; Technical Education Instructors</b> 143332 - Jul 14, 2011 9:00 am - 3:30 pm	6.00	6	7
<b>AFESC--Collaborating to Develop Exemplary Lessons for Business Education</b> 146058 - Jul 14, 15, 2011 9:00 am - 3:30 pm	12.00	6	10
<b>AFESC--Heartsaver AED</b> 140654 - Jul 15, 2011 8:30 am - 12:30 pm	4.00	4	8
<b>AFESC--SMART Board Level 2</b> 143125 - Jul 15, 2011 9:00 am - 3:30 pm	6.00	10	16

**Summary Attended**

Printed Date: 5/16/2012 Last modified: 11/18/2005

<b>Session</b>	<b>Credits</b>	<b>Districts</b>	<b>Attended</b>
<b>AFESC--Collaborative Projects with Art/Math</b> 143505 - Jul 15, 2011 9:00 am - 3:30 pm	6.00	13	18
<b>AFESC--1-Hour Lottery Scholarship Update and Legislative Updates</b> 140056 - Jul 18, 2011 9:00 am - 11:00 am	2.00	9	17
<b>AFESC--Write What You Don't Know</b> 140983 - Jul 18, 2011 9:00 am - 3:30 pm	6.00	13	20
<b>AFESC--CGI Level 1 Days 1-4</b> 141628 - Jul 18, 19, 20, 21, 2011 8:30 am - 3:30 pm	24.00	10	34
<b>AFESC--Internet Resources for Career and Technical Education Instructors</b> 141803 - Jul 18, 2011 8:30 am - 11:30 am	3.00	4	4
<b>AFESC--Shared Reading in K-1</b> 143183 - Jul 18, 2011 8:30 am - 11:30 am	3.00	11	18
<b>AFESC--Pathwise Mentor Training</b> 143271 - Jul 18, 19, 20, 2011 8:30 am - 3:30 pm	18.00	22	36
<b>AFESC--Mandated Coach's Training CIV</b> 150966 - Jul 18, 2011 10:00 am - 11:30 am	1.50	6	16
<b>AFESC--SCUMS! Producing Proficient and Advanced Writers</b> 140301 - Jul 19, 2011 9:00 am - 3:30 pm	6.00	13	19
<b>AFESC--Effective Literacy Year 2</b> 140664 - Jul 19, 20, 21, 2011 8:30 am - 3:00 pm	18.00	9	15
<b>AFESC--Playbook For A Diverse Classroom: K-12</b> 140947 - Jul 19, 2011 9:00 am - 3:30 pm	6.00	11	18
<b>AFESC--C.L.A.S.S. Comprehensive Literacy for Adolescent Student Success</b> 141463 - Jul 19, 20, 21, 2011 9:00 am - 3:30 pm	18.00	12	31
<b>AFESC--GRADES 5-8 Content Literacy: Summarization and Writing to Learn for Science</b> 142304 - Jul 19, 2011 9:00 am - 3:30 pm	6.00	15	26
<b>AFESC--Flip Your Classroom Inside Out</b> 143128 - Jul 19, 2011 9:00 am - 3:30 pm	6.00	12	21
<b>AFESC--Arkansas Museum of Military History CIV</b> 140934 - Jul 20, 2011 9:00 am - 12:00 pm	3.00	13	20

**Summary Attended**

Printed Date: 5/16/2012 Last modified: 11/18/2005

<b>Session</b>	<b>Credits</b>	<b>Districts</b>	<b>Attended</b>
<b>AFESC--Literacy+Technology=Gearing up for the Common Core in Elementary School</b> 143154 - Jul 20, 2011 9:00 am - 3:30 pm	6.00	14	22
<b>AFESC--Financial Fitness for Arkansas Teachers</b> 144151 - Jul 20, 2011 12:30 pm - 3:30 pm	3.00	9	13
<b>AFESC--How to Assist with Traumatic Brain Injury and Autism Spectrum Disorder</b> 148245 - Jul 20, 2011 9:00 am - 4:00 pm	6.00	7	20
<b>AFESC--Teacher Evaluation Phase I Training</b> 150777 - Jul 20, 21, 22, 2011 8:30 am - 3:30 pm	18.00	2	5
<b>AFESC--Charlie May Simon and the Arkansas Diamond Awards</b> 140107 - Jul 21, 2011 9:00 am - 12:00 pm	3.00	17	38
<b>AFESC--MOODLING With Blended Learning? CIV</b> 140243 - Jul 21, 2011 9:00 am - 3:30 pm	6.00	12	15
<b>AFESC--GRADES 5-8 Content Literacy: Questioning and Vocabulary for Science</b> 142311 - Jul 21, 2011 9:00 am - 3:30 pm	6.00	16	21
<b>AFESC--Flip Your Classroom Inside Out</b> 143156 - Jul 21, 2011 9:00 am - 3:30 pm	6.00	16	24
<b>AFESC--North Central Reading Council Workshop</b> 151031 - Jul 21, 2011 8:30 am - 3:30 pm	6.00	2	17
<b>AFESC--Heartsaver AED</b> 140655 - Jul 22, 2011 8:30 am - 12:30 pm	4.00	5	7
<b>AFESC--Science by Design</b> 142718 - Jul 22, 2011 9:00 am - 3:30 pm	6.00	14	21
<b>AFESC--Literacy + Technology = Gearing up for Common Core in Middle School and High School</b> 143164 - Jul 22, 2011 9:00 am - 3:30 pm	6.00	9	21
<b>AFESC--Writing in Kindergarten and First Grade</b> 143185 - Jul 22, 2011 8:30 am - 11:30 am	3.00	10	20
<b>AFESC--Writing in Kindergarten and First Grade</b> 143186 - Jul 22, 2011 12:30 pm - 3:30 pm	3.00	7	11
<b>AFESC--Creative Bookmaking</b> 143508 - Jul 22, 2011 9:00 am - 3:30 pm	6.00	22	24

**Summary Attended**

Printed Date: 5/16/2012 Last modified: 11/18/2005

Session	Credits	Districts	Attended
<b>AFESC--One Day Teacher Evaluation Phase I Training</b> 150996 - Jul 22, 2011 10:00 am - 3:30 pm	5.00	5	14
<b>AFESC--Grades 5/6 Math Transition to Common Core State Standards</b> 140649 - Jul 25, 26, 2011 8:30 am - 3:30 pm	12.00	19	29
<b>AFESC--CGI Level 2</b> 141634 - Jul 25, 26, 27, 28, 2011 8:30 am - 3:30 pm	24.00	9	30
<b>AFESC--ELLA Year I, Days 1-4</b> 141812 - Jul 25, 26, 27, 28, 2011 8:30 am - 3:30 pm	24.00	14	26
<b>AFESC--SMART Response</b> 143159 - Jul 25, 2011 9:00 am - 3:30 pm	6.00	8	16
<b>AFESC--Art Across the Curriculum: Infusing Art Activities into the Regular Classroom</b> 143521 - Jul 25, 2011 9:00 am - 3:30 pm	6.00	13	15
<b>AFESC--Distance Learning Instructor Certification Training</b> 140246 - Jul 26, 27, 2011 9:00 am - 4:00 pm	12.00	6	9
<b>AFESC--Effective Literacy Year 1</b> 140665 - Jul 26, 27, 28, 2011 8:30 am - 3:00 pm	18.00	10	21
<b>AFESC--C.L.A.S.S. Comprehensive Literacy for Adolescent Student Success</b> 141461 - Jul 26, 27, 28, 2011 9:00 am - 3:30 pm	18.00	12	31
<b>AFESC--GRADES 9-12 Content Literacy: Summarization and Writing To Learn for Science</b> 142316 - Jul 26, 2011 9:00 am - 3:30 pm	6.00	9	11
<b>AFESC--Mathematics + Technology = Gearing up for Common Core in the Elementary School</b> 143167 - Jul 26, 2011 9:00 am - 3:30 pm	6.00	12	25
<b>AFESC--Pathwise Recalibration</b> 151037 - Jul 26, 2011 9:00 am - 3:30 pm	6.00	13	28
Mentoring Coaching			
<b>AFESC--Tier 1: 4-Hour Mandated Fiscal Management Training</b> 140295 - Jul 27, 2011 9:00 am - 2:00 pm	4.00	33	82
<b>AFESC--Mathematics + Technology = Gearing up for Common Core in the Middle School</b> 143170 - Jul 27, 2011 9:00 am - 3:30 pm	6.00	16	22
<b>AFESC--My Triand for Triand System Administrators</b> 140644 - Jul 28, 2011 9:00 am - 12:00 pm	3.00	3	3

**Summary Attended**

Printed Date: 5/16/2012 Last modified: 11/18/2005

<b>Session</b>	<b>Credits</b>	<b>Districts</b>	<b>Attended</b>
<b>AFESC--My Triand for Counselors/Registrars</b> 140645 - Jul 28, 2011 12:30 pm - 3:30 pm	3.00	13	23
<b>AFESC--GRADES 9-12 Content Literacy: Questioning and Vocabulary for Science</b> 142313 - Jul 28, 2011 9:00 am - 3:30 pm	6.00	7	8
<b>AFESC--Pathwise Recalibration</b> 145678 - Jul 28, 2011 9:00 am - 3:30 pm	6.00	12	28
Mentoring Coaching			
<b>AFESC--Collaborating to Develop Exemplary Lessons for Family and Consumer Science Courses</b> 147173 - Jul 28, 29, 2011 9:00 am - 3:30 pm	12.00	4	5
<b>AFESC--High Yield Strategies That Work</b> 140311 - Jul 29, 2011 9:00 am - 3:30 pm	6.00	20	40
<b>AFESC--Stock Market Game Training</b> 143492 - Jul 29, 2011 9:00 am - 3:30 pm	6.00	13	15
<b>AFESC--School Based Audiology Services</b> 146553 - Jul 29, 2011 8:30 am - 4:00 pm	6.00	15	33
<b>AFESC--Target Testing</b> 150782 - Jul 29, 2011 9:00 am - 12:00 pm	3.00	10	24
<b>AFESC--Pre-AP in Mathematics</b> 140640 - Aug 1, 2, 2011 9:00 am - 3:30 pm	12.00	8	8
<b>AFESC--Pre-AP: Interdisciplinary Strategies for English and Social Studies</b> 140641 - Aug 1, 2, 2011 9:00 am - 3:30 pm	12.00	12	24
<b>AFESC--Grades 3/4 Math Transition to Common Core State Standards</b> 140648 - Aug 1, 2, 2011 8:30 am - 3:30 pm	12.00	13	20
<b>AFESC--APSCN Demographics Training</b> 147678 - Aug 2, 2011 9:00 am - 2:30 pm	5.00	5	7
<b>AFESC--Music! Music! Music!</b> 140642 - Aug 4, 2011 8:30 am - 3:30 pm	6.00	16	21
<b>AFESC--Getting Your Students to Use Higher Order Thinking Skills</b> 140647 - Aug 4, 2011 9:00 am - 3:30 pm	6.00	15	24
<b>AFESC--Using Literacy Strategies in Arkansas History for Grades 6-12</b> 142342 - Aug 4, 2011 9:00 am - 12:00 pm	3.00	6	7



**Summary Attended**

Printed Date: 5/16/2012 Last modified: 11/18/2005

<b>Session</b>	<b>Credits</b>	<b>Districts</b>	<b>Attended</b>
<b>AFESC--Science: It's A Blast!</b> 142687 - Aug 4, 2011 9:00 am - 3:30 pm	6.00	11	16
<b>AFESC--Pathwise Recalibration</b> 148249 - Aug 4, 2011 9:00 am - 3:30 pm	6.00	10	26
Mentoring Coaching			
<b>AFESC--2011-2012 Adequate Yearly Progress CIV Training</b> 151807 - Aug 4, 2011 1:00 pm - 4:30 pm	3.50	8	9
<b>AFESC--Pre-Open Enrollment Kickoff Meeting</b> 140643 - Aug 5, 2011 9:30 am - 11:00 am	1.50	21	25
<b>AFESC--Teaching to Students' Learning Styles</b> 140646 - Aug 5, 2011 9:00 am - 3:30 pm	6.00	14	23
<b>AFESC--APSCN Scheduling Review/Workshop</b> 147677 - Aug 5, 2011 9:00 am - 2:30 pm	5.00	2	2
<b>AFESC--Back to Basics: The "Core" of Learning</b> 153796 - Aug 8, 2011 8:30 am - 11:30 am	3.00	9	32
<b>AFESC--EARS</b> 153797 - Aug 8, 2011 2:00 pm - 3:00 pm	1.00	8	33
<b>Pathwise Project Director's Update Meeting</b> 144516 - Aug 9, 2011 8:30 am - 12:00 pm	3.50	22	24
<b>AFESC--APSCN Daily Attendance Training</b> 147676 - Aug 9, 2011 9:00 am - 2:30 pm	5.00	3	3
<b>AFESC--Linking Learning Strategies</b> 153803 - Aug 9, 2011 12:30 pm - 3:30 pm	3.00	8	31
<b>AFESC--APSCN Class Attendance Training</b> 147679 - Aug 10, 2011 9:00 am - 2:30 pm	5.00	3	3
<b>AFESC--TIPS Basic Training</b> 153804 - Aug 10, 2011 8:30 am - 3:30 pm	6.00	8	33
<b>AFESC--Child Nutrition CIV</b> 144963 - Aug 11, 2011 1:00 pm - 4:00 pm	3.00	17	24
<b>AFESC--Back to the Basics: Due Process</b> 153835 - Aug 11, 2011 8:30 am - 3:30 pm	6.00	9	33

**Summary Attended**

Printed Date: 5/16/2012 Last modified: 11/18/2005

<b>Session</b>	<b>Credits</b>	<b>Districts</b>	<b>Attended</b>
<b>AFESC--Using iPads &amp; Therapy Applications</b> 153837 - Aug 12, 2011 8:30 am - 11:30 am	3.00	8	36
<b>AFESC--Meet Your Students</b> 153839 - Aug 12, 2011 12:00 pm - 3:00 pm	3.00	7	34
<b>AFESC--Google Doc Training</b> 155396 - Aug 17, 2011 9:00 am - 10:00 am	1.00	1	10
<b>AFESC--Par Pro Training for RN's</b> 150519 - Aug 18, 2011 9:00 am - 12:00 pm	3.00	5	5
<b>AFESC--Target Testing Technical Training</b> 152358 - Aug 19, 2011 8:30 am - 11:30 am	3.00	11	27
<b>AFESC--Cognos: Running Reports/Adding Fields to Existing Reports</b> 151813 - Aug 24, 2011 9:00 am - 2:30 pm	5.00	6	15
<b>AFESC--Pathwise Recalibration</b> 154090 - Aug 24, 2011 8:30 am - 3:30 pm	6.00	14	24
Mentoring Coaching			
<b>AFESC--BMI Screening for School Nurses and School Staff</b> 150632 - Aug 25, 2011 12:30 pm - 4:00 pm	3.50	3	3
<b>AFESC--Scoliosis Screening for School Nurses</b> 150633 - Aug 25, 2011 8:00 am - 11:30 am	4.00	5	5
<b>AFESC--STEM Works</b> 154696 - Aug 25, 2011 11:00 am - 12:00 pm	1.00	3	6
<b>AFESC-Superintendents' Meeting</b> 158054 - Aug 25, 2011 9:00 am - 12:00 pm	3.00	19	21
<b>G/T Coordinators' Meeting</b> 140076 - Aug 26, 2011 8:30 am - 3:30 pm	6.00	25	26
<b>AFESC--HIVE Data Training</b> 152710 - Aug 31, 2011 9:00 am - 12:00 pm	3.00	10	44
<b>AFESC--AP Coordinators' In-Service</b> 140078 - Sep 1, 2011 8:30 am - 3:30 pm	6.00	20	21
<b>AFESC--Child Nutrition CIV</b> 144964 - Sep 1, 2011 1:00 pm - 4:00 pm	3.00	20	22

**Summary Attended**

Printed Date: 5/16/2012 Last modified: 11/18/2005

<b>Session</b>	<b>Credits</b>	<b>Districts</b>	<b>Attended</b>
<b>AFESC--An Overview of Instructional Facilitator Training (ADE) for 2011-2012</b> 151752 - Sep 1, 2011 9:00 am - 12:00 pm	3.00	6	10
<b>AFESC-Health Reform</b> 154147 - Sep 12, 2011 10:30 am - 1:30 pm	3.00	14	20
<b>AFESC--Project Based Learning with Tony Vincent</b> 154287 - Sep 13, 2011 8:30 am - 3:30 pm	6.00	24	94
<b>AFESC--Financial &amp; Programmatic Monitoring (ACSIP) Training Session</b> 152242 - Sep 15, 2011 9:30 am - 12:00 pm	2.50	19	35
<b>AFESC--Federal Coordinators' Meeting</b> 153403 - Sep 15, 2011 12:00 pm - 3:00 pm	3.00	20	26
<b>AFESC--On-Campus Standards Review (OSR) CIV</b> 154958 - Sep 15, 2011 9:00 am - 12:00 pm	3.00	9	19
<b>AFESC--Child Abuse and Maltreatment Training</b> 152723 - Sep 16, 2011 9:00 am - 11:00 am	2.00	9	24
<b>AFESC--SMS APSCN: Cognos Training</b> 154513 - Sep 16, 2011 9:00 am - 3:00 pm	5.00	7	15
<b>AFESC--Collaborating to Develop Exemplary Lessons for Business Education Day 3</b> 154718 - Sep 17, 2011 8:00 am - 2:00 pm	6.00	6	10
<b>AFESC--Administrators' Book Study</b> 153465 - Sep 19, 2011 9:00 am - 12:00 pm	3.00	9	25
<b>AFESC--Elementary Principals' Meeting</b> 153518 - Sep 19, 2011 12:00 pm - 3:00 pm	3.00	6	10
<b>AFESC--SEcondary Principals' Meeting</b> 153523 - Sep 19, 2011 12:00 pm - 3:00 pm	3.00	1	1
<b>AFESC--Target Testing</b> 153539 - Sep 20, 2011 8:30 am - 11:30 am	3.00	9	27
<b>AFESC--ELF Year 1 Day 4</b> 157392 - Sep 22, 2011 8:30 am - 3:30 pm	6.00	9	21
<b>AFESC--Superintendents' Meeting</b> 158055 - Sep 22, 2011 9:00 am - 12:00 pm	3.00	13	14

**Summary Attended**

Printed Date: 5/16/2012 Last modified: 11/18/2005

<b>Session</b>	<b>Credits</b>	<b>Districts</b>	<b>Attended</b>
<b>AFESC--Arch Ford Quiz Bowl Coaches Meeting</b> 154008 - Sep 23, 2011 1:00 pm - 3:00 pm	2.00	17	21
<b>AFESC--APSCN Required Fields for State Reporting Student Management</b> 151817 - Sep 26, 2011 9:00 am - 2:30 pm	5.00	6	15
<b>AFESC--Math-Transition to CCSS for Grades 3-8</b> 155423 - Sep 26, 2011 8:30 am - 3:30 pm	6.00	19	41
<b>AFESC--Classroom Walkthrough Training</b> 154240 - Sep 27, 28, 2011 8:30 am - 3:30 pm Advocacy Leadership	12.00	12	34
<b>AFESC--Aggregator Appliance &amp; M86 Filter Training</b> 154281 - Sep 27, 28, 2011 9:00 am - 4:00 pm	12.00	9	10
<b>AFESC--CGI Year 3 Fall Follow-Up Days 4-5</b> 154769 - Sep 27, 28, 2011 8:30 am - 3:00 pm	12.00	9	23
<b>AFESC--Teaching the Gifted in the Secondary Content Classroom CIV</b> 140701 - Sep 28, 2011 8:30 am - 4:00 pm	6.50	8	16
<b>AFESC--Teacher Evaluation Phase 1 Follow-Up Training</b> 154612 - Sep 29, 2011 9:00 am - 2:00 pm	5.00	6	17
<b>AFESC--CGI Level 1 Days 5 and 6</b> 154772 - Sep 29, 30, 2011 8:30 am - 3:00 pm	12.00	12	32
<b>AFESC--Statewide CIV for Mathematics</b> 155441 - Sep 29, 2011 9:00 am - 3:30 pm	6.00	19	61
<b>AFESC--Arch Ford Counselors' Meeting</b> 153172 - Sep 30, 2011 8:30 am - 3:30 pm	6.00	24	61
<b>AFESC--Disaster Recovery Planning &amp; Training</b> 154283 - Sep 30, 2011 9:00 am - 4:00 pm	6.00	14	18
<b>AFESC--Effective Observations In The Evaluation Process</b> 162040 - Sep 30, 2011 12:30 pm - 3:30 pm	3.00	7	31
<b>AFESC--APSCN Report Card Review</b> 151820 - Oct 6, 2011 9:00 am - 2:30 pm	5.00	5	7
<b>AFESC--Child Nutrition CIV</b> 153970 - Oct 6, 2011 1:00 pm - 4:00 pm	3.00	7	8

**Summary Attended**

Printed Date: 5/16/2012 Last modified: 11/18/2005

<b>Session</b>	<b>Credits</b>	<b>Districts</b>	<b>Attended</b>
<b>AFESC--More Than Mud Pies</b> 154307 - Oct 11, 2011 8:30 am - 11:30 am	2.00	7	11
<b>AFESC--Instructional Facilitator Training Year I (3 Days)</b> 155863 - Oct 11, 12, 24, 2011 9:00 am - 3:30 pm	18.00	4	6
<b>AFESC--ELF Year 2</b> 156850 - Oct 11, 2011 8:30 am - 3:30 pm	6.00	10	16
<b>AFESC--ELLA Day 5</b> 156847 - Oct 12, 2011 8:30 am - 3:30 pm	6.00	16	35
<b>AFESC--CGI Level 1 Days 5 and 6</b> 154778 - Oct 13, 14, 2011 8:30 am - 3:00 pm	12.00	9	34
<b>AFESC--EGuide Training--Days 1 and 2</b> 155411 - Oct 13, 14, 2011 8:30 am - 3:30 pm	12.00	7	12
<b>AFESC--ELF Year 2</b> 156851 - Oct 13, 2011 8:30 am - 3:30 pm	6.00	8	16
<b>AFESC--Superintendent's Conference</b> 159060 - Oct 13, 2011 9:00 am - 12:00 pm	3.00	20	21
<b>AFESC--Collaborating to Develop Exemplary Lessons for Skills and Technical Science Teachers</b> Day 3 154734 - Oct 15, 2011 8:00 am - 2:00 pm	6.00	3	9
<b>AFESC--Federal Coordinators' Meeting</b> 157143 - Oct 17, 2011 9:00 am - 12:00 pm	3.00	12	13
<b>AFESC--Administrators' Book Study</b> 153930 - Oct 18, 2011 9:00 am - 12:00 pm	3.00	9	21
<b>AFESC--Gifted and Talented Coordinators' Meeting</b> 154152 - Oct 18, 2011 8:30 am - 12:00 pm	3.50	17	17
<b>AFESC - Technology Coordinator Meeting</b> 156359 - Oct 18, 2011 9:00 am - 3:00 pm	0.00	8	10
<b>AFESC--Migrant: Title 1 Part C</b> 156684 - Oct 19, 2011 10:00 am - 2:00 pm	4.00	10	11
<b>AFESC--Classroom Walkthrough Initial Training: Day 3</b> 154242 - Oct 20, 2011 8:30 am - 3:30 pm	6.00	12	34

**Summary Attended**

Printed Date: 5/16/2012 Last modified: 11/18/2005

<b>Session</b>	<b>Credits</b>	<b>Districts</b>	<b>Attended</b>
<b>AFESC--Teacher Center Committee Meeting 157332 - Oct 24, 2011 10:00 am - 1:00 pm</b>	<b>3.00</b>	<b>20</b>	<b>21</b>
<b>AFESC--Parent Involvement for Schools in Monitoring Cycle 155661 - Oct 26, 2011 9:00 am - 3:00 pm</b>	<b>5.00</b>	<b>11</b>	<b>34</b>
<b>AFESC--ELLA Day 12 160176 - Nov 1, 2011 8:30 am - 3:30 pm</b>	<b>6.00</b>	<b>7</b>	<b>8</b>
<b>AFESC--ELLA Day 12 160177 - Nov 2, 2011 8:30 am - 3:30 pm</b>	<b>6.00</b>	<b>7</b>	<b>12</b>
<b>AFESC--Child Nutrition CIV 153972 - Nov 3, 2011 1:00 pm - 4:00 pm</b>	<b>3.00</b>	<b>8</b>	<b>13</b>
<b>AFESC--ELLA Day 12 160178 - Nov 3, 2011 8:30 am - 3:30 pm</b>	<b>6.00</b>	<b>7</b>	<b>12</b>
<b>AFESC--AF Library Media Specialists' Meeting 157475 - Nov 4, 2011 8:30 am - 3:30 pm</b>	<b>6.00</b>	<b>20</b>	<b>45</b>
<b>AFESC--Common Core State Standards for Literacy in Grades K-2 157308 - Nov 7, 2011 8:30 am - 3:30 pm</b>	<b>6.00</b>	<b>19</b>	<b>45</b>
<b>AFESC--Instructional Facilitator Training Year II (5 Days) 155864 - Nov 8, Dec 13, 2011 Jan 24, Feb 28, Mar 14, 2012 9:00 am - 3:30 pm</b>	<b>30.00</b>	<b>6</b>	<b>10</b>
<b>AFESC--Professional Learning Communities 143239 - Nov 9, 2011 8:30 am - 3:30 pm</b>	<b>6.00</b>	<b>17</b>	<b>40</b>
<b>AFESC--School Health Index 156687 - Nov 9, 2011 9:00 am - 12:30 pm</b>	<b>3.50</b>	<b>6</b>	<b>6</b>
<b>AFESC--ELF Year 1 156852 - Nov 9, 2011 8:30 am - 3:30 pm</b>	<b>6.00</b>	<b>9</b>	<b>23</b>
<b>AFESC--Grades 4-6 Thinking Mathematically Days 5-6 157441 - Nov 10, 11, 2011 8:30 am - 3:30 pm</b>	<b>12.00</b>	<b>11</b>	<b>31</b>
<b>AFESC--ESL Coordinators' Meeting 158629 - Nov 11, 2011 9:00 am - 2:30 pm</b>	<b>4.50</b>	<b>4</b>	<b>5</b>
<b>AFESC--Teacher Fair Dismissal 157355 - Nov 14, 2011 9:00 am - 12:00 pm</b>	<b>3.00</b>	<b>5</b>	<b>10</b>

**Summary Attended**

Printed Date: 5/16/2012 Last modified: 11/18/2005

<b>Session</b>	<b>Credits</b>	<b>Districts</b>	<b>Attended</b>
<b>AFESC--Mathematics Standards In K-2</b> 157762 - Nov 15, 2011 8:30 am - 3:30 pm	6.00	18	41
<b>AFESC--Classroom Walk Through Initial Training: Day 4</b> 154244 - Nov 16, 2011 8:30 am - 3:30 pm	6.00	11	33
<b>AFESC--Federal Coordinators' Meeting</b> 157151 - Nov 17, 2011 9:00 am - 12:00 pm	3.00	15	17
<b>AFESC--AFTC Meeting</b> 157448 - Nov 17, 2011 9:00 am - 3:00 pm	0.00	17	20
<b>AFESC--Superintendents' Meeting</b> 160202 - Nov 17, 2011 9:00 am - 12:00 pm	3.00	13	15
<b>AFESC--Gifted and Talented Coordinators' Meeting</b> 154154 - Nov 18, 2011 8:30 am - 12:00 pm	3.50	14	14
<b>AFESC--Classroom Management--From Challenge to Victory</b> 158171 - Nov 18, 2011 8:30 am - 3:30 pm	6.00	17	29
<b>AFESC--Technology Integration Tools</b> 158384 - Nov 21, 2011 9:00 am - 3:30 pm	6.00	10	17
<b>AFESC--Writing Ideas That Spark the Brain and Ignite The Pen</b> 158389 - Nov 22, 2011 8:30 am - 3:00 pm	6.00	8	13
<b>AFESC--Administrators' Book Study</b> 153931 - Nov 29, 2011 9:00 am - 12:00 pm	3.00	9	19
<b>AFESC--College Board Advanced Placement Coordinators' Workshop CIV</b> 155772 - Nov 29, 2011 8:30 am - 3:30 pm	6.00	7	7
<b>AFESC--Computer Lab Managers Training</b> 158732 - Nov 29, 2011 9:00 am - 3:30 pm	6.00	7	9
<b>AFESC--Moodle Training</b> 159549 - Nov 29, 2011 9:00 am - 11:00 am	2.00	3	8
<b>AFESC--Classroom Management--From Challenge to Victory</b> 158314 - Nov 30, 2011 8:30 am - 3:30 pm	6.00	12	38
<b>AFESC--Child Nutrition CIV</b> 153982 - Dec 1, 2011 1:00 pm - 4:00 pm	3.00	6	22

**Summary Attended**

Printed Date: 5/16/2012 Last modified: 11/18/2005

<b>Session</b>	<b>Credits</b>	<b>Districts</b>	<b>Attended</b>
<b>AFESC--Statewide CIV for Mathematics</b> 155776 - Dec 1, 2011 9:00 am - 3:30 pm	6.00	24	68
<b>AFESC--ELLA Day 6</b> 158881 - Dec 1, 2011 8:30 am - 3:30 pm	6.00	15	32
<b>AFESC--Teacher Evaluation Phase 1 Follow-Up Training</b> 154613 - Dec 2, 2011 10:00 am - 2:00 pm	5.00	6	18
<b>AFESC--5-Star Science: Assessment and Standards</b> 159271 - Dec 2, 2011 9:00 am - 3:30 pm	6.00	5	7
<b>AFESC--Collaborating to Develop Exemplary Lessons for Family and Consumer Science Courses</b> Day 3 154735 - Dec 3, 2011 8:00 am - 2:00 pm	6.00	4	5
<b>AFESC--Gifted and Talented Coordinators' Meeting</b> 154156 - Dec 5, 2011 8:30 am - 12:00 pm	3.50	13	13
<b>AFESC--CIV Conversations with Teacher Center Coordinators and Teachers</b> 158908 - Dec 5, 2011 9:00 am - 1:00 pm	4.00	16	30
<b>AFESC--iPad Training</b> 160163 - Dec 5, 2011 9:00 am - 12:00 pm	3.00	1	7
<b>AFESC--Target Assessment CIV Training</b> 158936 - Dec 7, 2011 9:00 am - 12:00 pm	2.00	11	14
<b>AFESC--Arkansas CCSS Strategic Plan:Plan and Resources; CCSS Micro-Website; "Need to Know" Tool</b> 158656 - Dec 8, 2011 9:00 am - 12:00 pm	3.00	21	55
<b>AFESC--ESL Coordinators Meeting</b> 158631 - Dec 9, 2011 12:00 pm - 2:30 pm	2.50	4	4
<b>AFESC--Federal Coordinators' Meeting</b> 159775 - Dec 9, 2011 9:00 am - 12:00 pm	3.00	12	14
<b>AFESC--Comprehensive Literacy for Adolescent Student Success (C.L.A.S.S)</b> 154971 - Dec 12, 13, 2011 8:30 am - 3:00 pm	12.00	10	31
<b>AFESC--CGI Level 2 Days 5-6 Fall Follow Up</b> 157165 - Dec 12, 13, 2011 8:30 am - 3:30 pm	12.00	10	28



**Summary Attended**

Printed Date: 5/16/2012 Last modified: 11/18/2005

<b>Session</b>	<b>Credits</b>	<b>Districts</b>	<b>Attended</b>
<b>Tier 2 Training</b> 158687 - Dec 12, 2011 8:30 am - 12:30 pm	4.00	16	58
<b>AFESC--Classroom Management--From Challenge to Victory</b> 158519 - Dec 13, 2011 8:30 am - 3:30 pm	6.00	10	28
<b>AFESC--Comprehensive Literacy for Adolescent Student Success (C.L.A.S.S)</b> 154972 - Dec 14, 15, 2011 8:30 am - 3:00 pm	12.00	11	25
<b>AFESC--Technology Coordinators' Meeting</b> 159285 - Dec 14, 2011 9:00 am - 3:30 pm	6.00	15	16
<b>AFESC--CIV Conversations</b> 160387 - Dec 16, 2011 9:00 am - 12:00 pm	3.00	4	11
<b>AFESC--iPad Training</b> 160793 - Dec 19, 2011 9:00 am - 12:00 pm	3.00	1	3
<b>AFESC--Triand Training for Administrators and Counselors</b> 159971 - Jan 9, 2012 9:00 am - 12:00 pm	3.00	10	24
<b>AFESC--Mathematics Standards in Grades 3-5</b> 158985 - Jan 12, 2012 8:30 am - 3:30 pm	6.00	19	37
<b>AFESC--Administrators' Book Study</b> 158980 - Jan 13, 2012 9:00 am - 12:00 pm	3.00	10	26
<b>AFESC--Principals' Meeting</b> 160213 - Jan 13, 2012 12:30 pm - 3:30 pm	3.00	9	12
<b>AFESC--CGI Year 3 Follow-Up Days 6-7</b> 159394 - Jan 17, 18, 2012 8:30 am - 3:30 pm	12.00	8	19
<b>AFESC--CGI Year 1 Follow-Up Day 7</b> 159396 - Jan 19, 2012 8:30 am - 3:30 pm	6.00	10	28
<b>AFESC--ESL Coordinators Meeting</b> 158633 - Jan 20, 2012 12:00 pm - 2:30 pm	2.50	5	5
<b>AFESC--Common Core State Standards for Literacy in Grades 3-5</b> 158922 - Jan 23, 2012 8:30 am - 3:30 pm	6.00	24	62
<b>AFESC--NetQos Training</b> 160689 - Jan 23, 2012 9:00 am - 11:00 am	2.00	13	15

**Summary Attended**

Printed Date: 5/16/2012 Last modified: 11/18/2005

<b>Session</b>	<b>Credits</b>	<b>Districts</b>	<b>Attended</b>
<b>AFESC--School Nurse Update Regarding Emergency Rules Governing Glucagon Administration In Schools CIV</b> 160845 - Jan 23, 2012 9:00 am - 12:00 pm	3.00	22	28
<b>AFESC--Praxis III Prep</b> 159400 - Jan 24, 2012 8:30 am - 11:30 am	3.00	16	60
<b>AFESC--Praxis III Prep</b> 160759 - Jan 24, 2012 12:30 pm - 3:30 pm	3.00	15	50
<b>AFESC--CGI Follow-Up for Year 1, 2, 3 Participants</b> 161387 - Jan 24, 2012 9:00 am - 3:30 pm	6.00	8	15
<b>AFESC--ELF Year 1</b> 156853 - Jan 26, 2012 8:30 am - 3:30 pm	6.00	9	24
<b>AFESC--Federal Coordinators' Meeting</b> 160224 - Jan 26, 2012 9:00 am - 12:00 pm	3.00	14	18
<b>AFESC--Windows Deployment Services Training</b> 160656 - Jan 26, 2012 9:00 am - 3:30 pm	6.00	11	13
<b>AFESC--Superintendents' Meeting</b> 162881 - Jan 26, 2012 9:00 am - 12:00 pm	3.00	19	21
<b>AFESC--Facilitating Learning for Teachers and Students CIV</b> 155790 - Jan 27, 2012 8:30 am - 4:00 pm	6.00	8	19
<b>AFESC--Teacher Center Committee Meeting</b> 160724 - Jan 30, 2012 9:00 am - 12:00 pm	3.00	19	19
<b>AFESC--CCSS Institute #2: Assessment Plan</b> 158661 - Jan 31, 2012 9:00 am - 3:30 pm	6.00	17	51
<b>AFESC--Child Nutrition CIV</b> 153983 - Feb 2, 2012 1:00 pm - 4:00 pm	3.00	11	20
<b>AFESC--Student-Centered Coaching</b> 155796 - Feb 2, 2012 8:30 am - 4:00 pm	6.00	6	11
<b>AFESC--Vision Screening for School Nurses</b> 161335 - Feb 2, 2012 8:30 am - 12:00 pm	3.50	1	1
<b>AFESC--Hearing Screening for School Nurses</b> 161336 - Feb 2, 2012 1:00 pm - 4:00 pm	3.00	1	1

**Summary Attended**

Printed Date: 5/16/2012 Last modified: 11/18/2005

<b>Session</b>	<b>Credits</b>	<b>Districts</b>	<b>Attended</b>
<b>AFESC--Effective Early Childhood Procedures 163578 - Feb 3, 2012 12:00 pm - 3:00 pm</b>	<b>3.00</b>	<b>8</b>	<b>32</b>
<b>AFESC--Target Testing Informational Meeting 162384 - Feb 6, 2012 9:00 am - 11:30 am</b>	<b>2.50</b>	<b>14</b>	<b>41</b>
<b>AFESC--Common Core State Standards for Grades 6-8 159548 - Feb 9, 2012 8:30 am - 3:30 pm</b>	<b>5.00</b>	<b>20</b>	<b>33</b>
<b>AFESC--Statewide CIV for Literacy 159659 - Feb 15, 2012 9:00 am - 3:30 pm</b>	<b>6.00</b>	<b>8</b>	<b>20</b>
<b>AFESC--Superintendents' Meeting 163728 - Feb 16, 2012 9:00 am - 12:00 pm</b>	<b>3.00</b>	<b>18</b>	<b>20</b>
<b>AFESC--Student Progress Review 165029 - Feb 20, 2012 9:00 am - 12:00 pm</b>	<b>3.00</b>	<b>8</b>	<b>26</b>
<b>AFESC--Use of iPads and Student Interaction 165030 - Feb 20, 2012 1:00 pm - 3:00 pm</b>	<b>2.00</b>	<b>6</b>	<b>21</b>
<b>AFESC--Federal Coordinators Meeting 162692 - Feb 21, 2012 9:30 am - 11:30 am</b>	<b>2.00</b>	<b>16</b>	<b>19</b>
<b>AFESC--Curriculum Program Administrators' Meeting 162693 - Feb 21, 2012 12:00 pm - 3:00 pm</b>	<b>3.00</b>	<b>9</b>	<b>10</b>
<b>AFESC--Administrators' Book Study 158981 - Feb 24, 2012 9:00 am - 12:00 pm</b>	<b>3.00</b>	<b>8</b>	<b>21</b>
<b>AFESC--CGI Year 1 Follow-up Day 7 159398 - Feb 24, 2012 8:30 am - 3:30 pm</b>	<b>6.00</b>	<b>10</b>	<b>36</b>
<b>AFESC--Principals' Meeting 163129 - Feb 24, 2012 12:30 pm - 3:30 pm</b>	<b>3.00</b>	<b>5</b>	<b>6</b>
<b>AFESC--Online Target Testing CIV 163943 - Feb 24, 2012 9:00 am - 11:00 am</b>	<b>2.00</b>	<b>2</b>	<b>4</b>
<b>AFESC--Transition 2012: Pre-K Core: Getting a Great Start to Lifelong Learning 165284 - Feb 24, 2012 12:00 pm - 3:00 pm</b>	<b>3.00</b>	<b>31</b>	<b>105</b>
<b>AFESC--Common Core State Standards for Literacy in Grades 6-8 159642 - Feb 27, 2012 8:30 am - 3:30 pm</b>	<b>6.00</b>	<b>14</b>	<b>29</b>

**Summary Attended**

Printed Date: 5/16/2012 Last modified: 11/18/2005

<b>Session</b>	<b>Credits</b>	<b>Districts</b>	<b>Attended</b>
<b>AFESC--ELLA SBOT Day 13</b> 165994 - Feb 27, 2012 8:30 am - 3:30 pm	6.00	5	8
<b>AFESC--AF Library Media Specialists' Spring Meeting</b> 161149 - Feb 28, 2012 9:00 am - 3:30 pm	6.00	22	50
<b>AFESC--ELLA SBOT Day 13</b> 165995 - Feb 28, 2012 8:30 am - 3:30 pm	6.00	4	6
<b>AFESC--Effective Literacy Day 12</b> 171083 - Feb 28, 2012 8:15 am - 3:30 pm	6.00	8	12
<b>AFESC--Statewide CIV for Mathematics</b> 155802 - Feb 29, 2012 9:00 am - 3:30 pm	6.00	22	52
<b>AFESC--ELLA SBOT Day 13</b> 165996 - Feb 29, 2012 8:30 am - 3:30 pm	6.00	4	10
<b>AFESC--Child Nutrition CIV</b> 153985 - Mar 1, 2012 1:00 pm - 4:00 pm	3.00	24	69
<b>AFESC--Comprehensive Literacy for Adolescent Student Success (C.L.A.S.S)</b> 165371 - Mar 1, 2, 2012 8:30 am - 3:30 pm	12.00	6	9
<b>AFESC--ELLA SBOT Day 13</b> 165997 - Mar 1, 2012 8:30 am - 3:30 pm	6.00	5	7
<b>AFESC--Effective Literacy Day 12</b> 171084 - Mar 1, 2012 8:30 am - 3:30 pm	6.00	9	12
<b>AFESC--PE/Health Frameworks CIV</b> 162710 - Mar 8, 2012 9:00 am - 11:00 am	2.00	4	6
<b>AFESC--CCSS Institute 3: Planning for Formative Assessments for ELA and Math</b> 158659 - Mar 13, 2012 9:00 am - 3:30 pm	6.00	11	27
<b>AFESC--Alternative Education Program Description Training</b> 165051 - Mar 13, 2012 2:00 pm - 3:00 pm	1.00	13	19
<b>AFESC--Gifted and Talented Coordinators' Meeting</b> 154157 - Mar 14, 2012 8:30 am - 12:00 pm	3.50	9	9
<b>AFESC--Administrators' Book Study</b> 158982 - Mar 14, 2012 9:00 am - 12:00 pm	3.00	6	16

**Summary Attended**

Printed Date: 5/16/2012 Last modified: 11/18/2005

<b>Session</b>	<b>Credits</b>	<b>Districts</b>	<b>Attended</b>
<b>AFESC--Federal Coordinators' Meeting 165363 - Mar 15, 2012 9:00 am - 12:00 pm</b>	<b>3.00</b>	<b>11</b>	<b>13</b>
<b>AFESC--Curriculum Program Administrators' Meeting 165364 - Mar 15, 2012 12:30 pm - 3:30 pm</b>	<b>3.00</b>	<b>5</b>	<b>5</b>
<b>AFESC--Superintendents' Meeting 167759 - Mar 15, 2012 9:00 am - 12:00 pm</b>	<b>3.00</b>	<b>20</b>	<b>21</b>
<b>AFESC--ELLA Day 7 161989 - Mar 28, 2012 8:30 am - 3:30 pm</b>	<b>6.00</b>	<b>15</b>	<b>32</b>
<b>AFESC--AF Technology Coordinators' Meeting 165087 - Mar 29, 2012 9:15 am - 3:30 pm</b>	<b>6.00</b>	<b>15</b>	<b>18</b>
<b>AFESC--Extended School Year 169452 - Mar 30, 2012 12:00 pm - 3:00 pm</b>	<b>3.00</b>	<b>8</b>	<b>31</b>
<b>AFESC--Child Nutrition CIV 153986 - Apr 5, 2012 1:00 pm - 4:00 pm</b>	<b>3.00</b>	<b>19</b>	<b>24</b>
<b>AFESC--Apple Updates &amp; Information 166342 - Apr 5, 2012 9:00 am - 12:00 pm</b>	<b>3.00</b>	<b>20</b>	<b>42</b>
<b>AFESC--Literacy and CCSS Teacher Day Grade 5 165929 - Apr 16, 2012 8:30 am - 3:30 pm</b>	<b>6.00</b>	<b>17</b>	<b>34</b>
<b>AFESC--Computer Lab Managers Spring Training 166932 - Apr 16, 2012 9:00 am - 3:30 pm</b>	<b>6.00</b>	<b>10</b>	<b>10</b>
<b>AFESC--Literacy and CCSS Teacher Day Grade 6 165930 - Apr 18, 2012 8:30 am - 3:30 pm</b>	<b>6.00</b>	<b>16</b>	<b>28</b>
<b>AFESC--Federal Coordinators' Meeting 167659 - Apr 19, 2012 9:00 am - 12:00 pm</b>	<b>3.00</b>	<b>16</b>	<b>19</b>
<b>AFESC--Curriculum Program Administrators' Meeting 167660 - Apr 19, 2012 12:30 pm - 3:30 pm</b>	<b>3.00</b>	<b>9</b>	<b>9</b>
<b>AFESC--Effective Literacy Day 12 171090 - Apr 19, 2012 8:30 am - 3:30 pm</b>	<b>6.00</b>	<b>7</b>	<b>11</b>
<b>AFESC--Handbook Workshop 167267 - Apr 20, 2012 10:00 am - 11:30 am</b>	<b>1.50</b>	<b>16</b>	<b>39</b>

**Summary Attended**

Printed Date: 5/16/2012 Last modified: 11/18/2005

<b>Session</b>	<b>Credits</b>	<b>Districts</b>	<b>Attended</b>
<b>AFESC--Course Codes and Scheduling 167268 - Apr 20, 2012 12:30 pm - 2:00 pm</b>	<b>1.50</b>	<b>15</b>	<b>40</b>
<b>AFESC--Mathematics and CCSS Teacher Day Grade 5 165949 - Apr 23, 2012 8:30 am - 3:30 pm</b>	<b>6.00</b>	<b>19</b>	<b>33</b>
<b>AFESC--Literacy and CCSS Teacher Day Grade 7 165933 - Apr 24, 2012 8:30 am - 3:30 pm</b>	<b>6.00</b>	<b>14</b>	<b>20</b>
<b>AFESC--Mathematics and CCSS Teacher Day Grade 6 165952 - Apr 25, 2012 8:30 am - 3:30 pm</b>	<b>6.00</b>	<b>19</b>	<b>28</b>
<b>AFESC--Literacy and CCSS Teacher Day Grade 8 165934 - Apr 26, 2012 8:30 am - 3:30 pm</b>	<b>6.00</b>	<b>10</b>	<b>14</b>
<b>AFESC--Mathematics and CCSS Teacher Day Grade 3 165942 - Apr 26, 2012 8:30 am - 3:30 pm</b>	<b>6.00</b>	<b>20</b>	<b>34</b>
<b>AFESC--Thinking Mathematically: Day 7 Follow Up 168651 - Apr 26, 2012 8:30 am - 3:30 pm</b>	<b>6.00</b>	<b>9</b>	<b>23</b>
<b>AFESC--Superintendents' Meeting 170850 - Apr 26, 2012 9:00 am - 12:00 pm</b>	<b>3.00</b>	<b>18</b>	<b>20</b>
<b>AFESC--Effective Literacy Year 1 Day 7 171081 - Apr 26, 2012 8:30 am - 3:30 pm</b>	<b>6.00</b>	<b>5</b>	<b>9</b>
<b>AFESC--Literacy CCSS Teacher Day Grade 3 165922 - Apr 27, 2012 8:30 am - 3:30 pm</b>	<b>6.00</b>	<b>16</b>	<b>33</b>
<b>AFESC--Mathematics and CCSS Teacher Day Grades 7-8 165954 - Apr 27, 2012 8:30 am - 3:30 pm</b>	<b>6.00</b>	<b>18</b>	<b>30</b>
<b>C.L.A.S.S. Day 6 172361 - Apr 27, 2012 8:30 am - 3:30 pm</b>	<b>6.00</b>	<b>6</b>	<b>10</b>
<b>AFESC--Statewide CIV for Literacy 159660 - Apr 30, 2012 9:00 am - 3:30 pm</b>	<b>6.00</b>	<b>7</b>	<b>16</b>
<b>AFESC--Mathematics and CCSS Teacher Day Grade 4 165945 - Apr 30, 2012 8:30 am - 3:30 pm</b>	<b>6.00</b>	<b>19</b>	<b>27</b>
<b>AFESC--Gifted and Talented Coordinators' Meeting 154162 - May 3, 2012 9:00 am - 12:00 pm</b>	<b>3.00</b>	<b>12</b>	<b>12</b>

**Summary Attended**

Printed Date: 5/16/2012 Last modified: 11/18/2005

<b>Session</b>	<b>Credits</b>	<b>Districts</b>	<b>Attended</b>
<b>AFESC--Child Nutrition</b> 160226 - May 3, 2012 1:00 pm - 4:00 pm	3.00	15	15
<b>AFESC--Technology Integration Tools &amp; Resources</b> 165091 - May 3, 2012 8:30 am - 3:30 pm	6.00	7	14
<b>C.L.A.S.S. Day 6</b> 172367 - May 3, 2012 8:30 am - 3:30 pm	6.00	4	14
<b>C.L.A.S.S. Day 6</b> 172369 - May 4, 2012 8:30 am - 3:30 pm	6.00	6	9
<b>AFESC--Teacher Center Committee Meeting</b> 168735 - May 7, 2012 12:00 pm - 2:00 pm	2.00	15	15
<b>AFESC-SMART Board Training</b> 171621 - May 8, 2012 9:00 am - 3:30 pm	6.00	1	3
<b>AFESC-ELLA Update TOT</b> 168181 - May 9, 2012 8:30 am - 3:30 pm	6.00	4	4
<b>AFESC--CCSS Institute 4: Learning Progressions; ELA; Math</b> 158657 - May 10, 2012 9:00 am - 3:30 pm	6.00	13	22
<b>AFESC--Effective Literacy Update TOT</b> 168180 - May 11, 2012 8:30 am - 3:30 pm	6.00	4	4
<b>AFESC--Statewide CIV for Mathematics</b> 155811 - May 16, 2012 9:00 am - 3:30 pm	6.00	13	31
<b>GRAND TOTAL:</b>		<b>111</b>	<b>8486</b>

## Hosted ADE Trainings

ADE .....	August 18 – 19, 2011
Statewide Instructional Facilitators TOT.....	August 29 - 30, 2011
Statewide CLASS TOT .....	August 31 - September 1, 2011
ADE Unit Meetings .....	September 6-7, 2011
State Literacy Core Meeting .....	September 8, 2011
ADE Team Meeting with Diane Gross	
Statewide Instructional Facilitators TOT.....	September 13 – 15, 2011
Arch Ford Area School Board Training .....	September 26, 2011
Asbestos Training.....	September 29 – 30, 2011
Disaster Recovery Training .....	September 30, 2011
ADE Unit Meetings .....	October 4 – 5, 2011
Statewide Instructional Facilitators TOT.....	October 6, 2011
WITS .....	October 11 – 12, 2011
State Literacy Core Team Meeting.....	October 27, 2011
School Board Training .....	November 15, 2011
State Literacy Core Team Meeting.....	November 16 – 17, 2011
Bus Drivers' Training .....	December 5, 2011
ADE Unit Meetings .....	December 6 – 7, 2011
ADE Unit Meetings .....	January 10 – 11, 2012
ADE with Stephen Barkley .....	January 27, 2012
TIE .....	February 1 – 4, 2012
ADE Unit Meeting.....	February 7 – 8, 2012
State Literacy Core Team Meeting.....	February 22 – 23, 2012
ADE Unit Meetings .....	March 6 – 7, 2012
State Literacy Core Team Meeting.....	March 27 – 28, 2012
Home School Testing .....	April 2, 2012
ADE Unit Meetings .....	April 3 – 4, 2012
Disciplinary Literacy TOT .....	April 17 – 19, 2012
ADE Unit Meetings .....	May 1 – 2, 2012
Elementary Chess Tournament .....	May 3, 2012
Elementary Science Fair .....	May 8 – 9, 2012