

SIGNING NATURALLY WORKSHOP

WHEN August 20 — 22, 2015

Thursday, Friday & Saturday

WHERE Stanford University, Stanford, CA
Information about workshop and meal locations will be sent upon receipt of fees.

COST

Early Bird: \$199 before August 1, 2015

Regular bird: \$259 after August 1, 2015

CONTACT

Cathy Haas, Professional Development Coordinator at clhaas@stanford.edu or
Sina McCarthy, BA-ASLTA President at smc@sinamccarthy.com

The workshop will be held at Stanford University in Stanford, CA. Information that is more specific will be sent to you upon receipt of registration and fee through email.

LODGING AND MEALS

Information about lodging and meals will be sent upon receipt of fees through email.

CREDITS/REFUND POLICY

NO REFUND AFTER PAYMENT

SPONSORED BY

Stanford University
BA-ASLTA
Heart Cruises

**All teacher sets are
provided compliments
of DawnSignPress!!**

WORKSHOP SCHEDULE

3-Day Workshop 9 am to 4 pm*

**Subject to change*

ONE HOUR LUNCH BREAK

1st Day (Thursday, August 20)

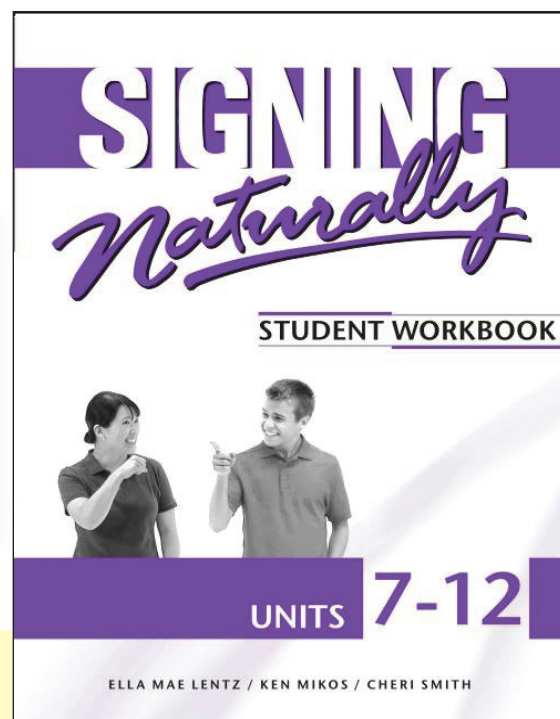
- Overview of Signing Naturally Units 7-12 curriculum and materials
- Review of functions & grammar
- Walk through Units 7 & 8

2nd Day (Friday, August 21)

- Walk through Units 9 & 10

3rd Day (Saturday, August 22)

- Walk through Units 11 & 12
- Classroom management issues
- Scheduling Ideas
- Test Ideas



SIGNING NATURALLY REGISTRATION FORM

Name _____

Address _____

City _____

State _____ Zip _____

Phone/VP or text _____

Email _____

Where do you teach? _____

What levels of ASL do you teach? _____

Are you a member of BA-ASLTA (Y or N) _____

Are you a member of ASLTA? (Y or N) _____

Check or Money Order only made payable to BA-ASLTA

Paid by Check # _____ or Money Order # _____

_____ Early Bird \$199 before August 1, 2015

_____ Regular Bird \$259 after August 1, 2015

CREDITS/REFUND POLICY
NO REFUND AFTER PAYMENT

Compliments of



WORKSHOP SCHEDULE

3-Day Workshop 9 am to 4 pm*

***Subject to change**

1st Day (Thursday, August 20)

- Overview of Signing Naturally Units 7-12 curriculum and materials
- Review of functions & grammar
- Walk through Units 7 & 8

2nd Day (Friday, August 21)

- Walk through Units 9 & 10

3rd Day (Saturday, August 22)

- Walk through Units 11 & 12
- Classroom management issues
- Scheduling Ideas
- Test Ideas

Mail registration form to:

**BA-ASLTA
P.O. Box 491
Fremont, CA 94537**



SUGGESTED ACCOMMODATIONS

BLOCK RATE IS VALID UNTIL JULY 21 2015

Mention that you are with Signing Naturally Training Workshop group to receive the group rate! The group code is **HC2**

Single and Double Rate \$119 • Triple Rate \$129 • Quads Rate \$139 (Triple and Quadruple occupancy are charged at an extra \$10 and \$20 per room per night more respectively)

Hotel tax is currently 14% and \$1.34 per night charge
(these taxes can change without notice)

Reservations are to be made on an individual basis, your attendees can make reservations two different ways:

- Book online using group code, **HC2**
- Contact the hotel directly at
(888) 422-2264 and give the group code, **HC2**



All individually booked reservations must be guaranteed to the attendee's major credit card at the time of reservation and the reservation must be received by the Cut-off Date on July 21, 2015.

Crowne Plaza Palo Alto

4290 El Camino Real, Palo Alto, California 94306

Contact the hotel directly at (888) 422-2264 and give the group code, **HC2**

Email: reservations@cabanapaloalto.com

<http://www.cabanapaloalto.com/>

Please contact Janel at Janel@heartcruises.com if you have any other questions.



AIRPORTS/TRANSPORTATION

San Jose Airport (SJC) is about 14 miles to the hotel. San Francisco (SFO) is about 30 miles and Oakland Airport (OAK) is about 38 miles to the hotel.

Information about transportations to the hotel and map will be sent upon receipt of fees.