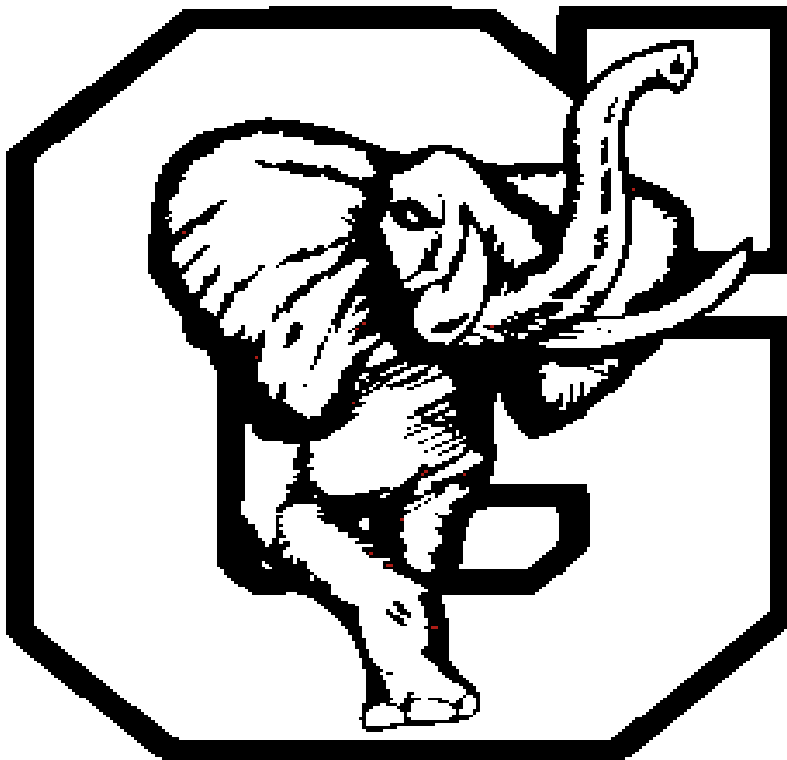


**Home of the Red  
Elephants**

**Class of 2016**



---

# **Junior Class Bulletin**

**(A Planning Guide for Post-Secondary Options)**

GHS Counseling Website: [www.bigredguidance.weebly.com](http://www.bigredguidance.weebly.com)

January, 2015

Dear Juniors,

This handbook was designed to provide you with the basic tools necessary to make well-informed decisions about your post-secondary options. This is an exciting time in your life and we hope that the information provided will decrease any anxiety you may have about your remaining time in high school as well as the college admissions process. Read through this planning guide carefully, and should questions arise before or after your “individual junior conference”, make an appointment to see your counselor.

Your junior year should be devoted to:

- Assessing progress toward graduation, including completing your pathway.
- Gathering information about yourself, your career options, appropriate postsecondary schools and required entrance exams.

A few important notes to remember: use [GACollege411.org](http://GACollege411.org) to manage your college and career search, as well as testing and application data; you are required to complete the Bridge Advisement “Post-Secondary Options” Activity (found on the following page); start to learn about financial aid and scholarships; athletes should register and send a transcript to the NCAA Clearinghouse at [www.eligibilitycenter.org](http://www.eligibilitycenter.org) or NAIA at [www.playnaia.org](http://www.playnaia.org) in order to participate in collegiate sports (speak to Mr. Jackson or your coach for details).

Finally, In order to stay connected and get important updates from the Counseling Office, please text the following message: **@gville2016** to 678-707-8435. We also encourage you to check the Counseling website on a regular basis at: <http://bigredguidance.weebly.com>

Sincerely,

Your GHS School Counselors

Mrs. Waters (A-F)	<a href="mailto:kayla.waters@gcssk12.net">kayla.waters@gcssk12.net</a>
Mr. Mutchler (G-L)	<a href="mailto:jd.mutchler@gcssk12.net">jd.mutchler@gcssk12.net</a>
Mrs. Wilson (M-Q)	<a href="mailto:tracey.wilson@gcssk12.net">tracey.wilson@gcssk12.net</a>
Mr. Jackson (R-Z)	<a href="mailto:michael.jackson@gcssk12.net">michael.jackson@gcssk12.net</a>



Date: \_\_\_\_\_

**Gainesville High School  
Bridge Advisement 11<sup>th</sup> Grade  
Post-Secondary Options Activity**

Name: \_\_\_\_\_ Pathway \_\_\_\_\_

Account Name	_____
Password	_____

1. Sign in to [www.gacollege411.org](http://www.gacollege411.org) using your:  and
2. Update Your Account if required.
3. Click on  tab at the top.
4. Click on **Explore Postsecondary** or **Explore Programs and Majors**. Follow the prompts at each section.
5. Choose 3 colleges that interest you, click on the school name, and click **Save to Your Portfolio** on the left side of the page.
6. List 3 colleges you saved to your portfolio:
  - \_\_\_\_\_
  - \_\_\_\_\_
  - \_\_\_\_\_

Visit colleges, specialty schools, military offices, or work environments to solidify postsecondary options.

# Gainesville High School Pathways

## CTAE, World Language, Fine Arts, Advanced Academic

<p><b><u>Architecture Drawing and Design</u></b></p> <ol style="list-style-type: none"> <li>1. Intro to Engineering, Drawing &amp; Design*</li> <li>2. Architectural Drawing &amp; Design I</li> <li>3. Architectural Drawing &amp; Design II</li> </ol>	<p><b><u>Engineering Graphics and Design</u></b></p> <ol style="list-style-type: none"> <li>1. Intro. to Engineering &amp; Drawing &amp; Design*</li> <li>2. Survey of Engineering Graphics</li> <li>3. 3D Modeling &amp; Analysis</li> </ol>	<p><b><u>Early Childhood Education</u></b></p> <ol style="list-style-type: none"> <li>1. Human Growth &amp; Development for Early Childhood*</li> <li>2. Intro. Early Childhood Care &amp; Ed.</li> <li>3. Health Safety, Nutrition for the Young Child</li> <li>4. Early Childhood Ed. Internship</li> </ol>	<p><b><u>Marketing and Management</u></b></p> <ol style="list-style-type: none"> <li>1. Marketing Principles*</li> <li>2. Entrepreneurship: Building a Business</li> <li>3. Advanced Marketing</li> </ol>
<p><b><u>Broadcasting/Video Production</u></b></p> <ol style="list-style-type: none"> <li>1. Broadcast/Video Production I*</li> <li>2. Broadcast/Video Production II</li> <li>3. Broadcast/Video Production III</li> </ol>	<p><b><u>Manufacturing</u></b></p> <ol style="list-style-type: none"> <li>1. Foundations of Manufacturing &amp; Material Science*</li> <li>2. Robotics and Automated Systems</li> <li>3. Production Enterprises</li> <li>4. Manufacturing Internship</li> </ol>	<p><b><u>Teaching as a Profession</u></b></p> <ol style="list-style-type: none"> <li>1. Examining the Teaching Profession*</li> <li>2. Contemporary Issues in Education</li> <li>3. Teaching as a Profession Internship</li> </ol>	<p><b><u>Therapeutic Services – Medical Services</u></b></p> <ol style="list-style-type: none"> <li>1. Introduction to Healthcare Science*</li> <li>2. Application of Therapeutic Services</li> <li>3. General Medicine</li> <li>4. Medical Services Internship</li> </ol>
<p><b><u>Construction</u></b></p> <ol style="list-style-type: none"> <li>1. Occupational Safety &amp; Fundamentals*</li> <li>2. Introduction to Construction</li> <li>3. Carpentry I</li> <li>4. Carpentry II</li> </ol>	<p><b><u>Nutrition and Food Science</u></b></p> <ol style="list-style-type: none"> <li>1. Food, Nutrition &amp; Wellness*</li> <li>2. Food &amp; Nutrition through the Lifespan</li> <li>3. Food Science</li> </ol>	<p><b><u>Administrative and Information Support</u></b></p> <ol style="list-style-type: none"> <li>1. Introduction Business &amp; Technology*</li> <li>2. Legal Environment of Business</li> <li>3. Business Communications &amp; Presentation</li> </ol>	<p><b><u>Small Business Development</u></b></p> <ol style="list-style-type: none"> <li>1. Business Essentials*</li> <li>2. Legal Environment of Business</li> <li>3. Entrepreneurial Ventures</li> </ol>

**Gainesville High School Pathways (Cont.)**   
**CTAE, World Language, Fine Arts, Advanced Academic**

<p><b><u>NJROTC</u></b></p> <ol style="list-style-type: none"> <li>1. Naval Science I Cadet Field Manual*</li> <li>2. Naval Science I Intro. to NJROTC</li> <li>3. Naval Science: Maritime History</li> <li>4. Naval Science II Nautical Science</li> <li>5. Naval Science III Naval Knowledge</li> <li>6. Naval Science III Naval Orient. &amp; Skills</li> <li>7. Naval Science IV Naval Leadership &amp; Ethics</li> <li>8. Naval Science IV Effective Communication</li> </ol>	<p><b><u>World Language:</u></b></p> <p><b><u>French, Spanish, Chinese, Latin, Other</u></b></p> <ol style="list-style-type: none"> <li>1. Complete all graduation requirements</li> <li>2. Including 3 distinct courses in World Language <b>OR</b></li> <li>3. Two distinct courses in World Language <b>And</b></li> <li>4. One AP World Language course <b>OR</b> 1 Dual Enrollment Course in the same World Language reflecting a third course at college level.</li> </ol>	<p><b><u>Fine Arts:</u></b></p> <p><b><u>Visual Arts</u></b></p> <ol style="list-style-type: none"> <li>1. Visual Arts I*</li> <li>2. Visual Arts II</li> <li>3. Drawing &amp; Painting I, II</li> <li>4. Weaving &amp; Jewelry</li> <li>5. Ceramics &amp; Sculpture I, II, III</li> <li>6. Additional courses available</li> </ol> <p><b><u>Journalism</u></b></p> <ol style="list-style-type: none"> <li>1. Journalism I*, II, III</li> <li>2. Additional courses available</li> </ol>	<p><b><u>Fine Arts:</u></b></p> <p><b><u>Theater</u></b></p> <ol style="list-style-type: none"> <li>1. Theater Arts/Fundamentals I*</li> <li>2. Musical Theater I, II, III, IV</li> <li>3. Acting I, II, III</li> <li>4. Additional courses available</li> </ol> <p><b><u>Music</u></b></p> <ol style="list-style-type: none"> <li>1. Beginning Chorus I*, II</li> <li>2. Beginning Women's Chorus I, II</li> <li>3. Advanced Chorus I, II</li> <li>4. Additional courses available in Chorus</li> <li>5. Band I*, II, III</li> <li>6. Additional courses available in Band</li> </ol>
<p><b><u>Advanced Academic:</u></b></p> <p><b><u>English Language Arts</u></b></p> <ol style="list-style-type: none"> <li>1. Complete 4 required credits in ELA</li> <li>2. Including 1 AP Lit. or Dual Enrollment Lit.</li> <li>3. Two sequential courses in a World Lang.</li> </ol>	<p><b><u>Advanced Academic:</u></b></p> <p><b><u>Math</u></b></p> <ol style="list-style-type: none"> <li>1. Complete 4 required credits in Math</li> <li>2. Including 1 AP Math or Dual Enrollment</li> <li>3. Two sequential courses in a World Lang.</li> </ol>	<p><b><u>Advanced Academic:</u></b></p> <p><b><u>Science</u></b></p> <ol style="list-style-type: none"> <li>1. Complete 4 required credits in Science</li> <li>2. Including 1 AP Science or Dual Enrollment</li> <li>3. Two sequential courses in a World Lang.</li> </ol>	<p><b><u>Advanced Academic:</u></b></p> <p><b><u>Social Studies</u></b></p> <ol style="list-style-type: none"> <li>1. Complete 4 required credits in SS</li> <li>2. Including 1 AP SS or Dual Enrollment</li> <li>3. Two sequential courses in a World Lang.</li> </ol>

## Junior CheckList (Cohort 2016)

### Spring Semester

- Meet with your counselor for future planning and to update your IGP (Individual Graduation Plan).
- Update your GACollege411 account and save 3 colleges to your portfolio.
- Make a folder for all important college/career planning information. You'll need it!
- Register for the ACT [www.actstudent.org](http://www.actstudent.org) and/or the SAT [www.collegeboard.org](http://www.collegeboard.org).
- Practice questions can be found at both websites and at [www.gacollege411.org](http://www.gacollege411.org).
- Check to see if schools require the SAT Subject Tests.
- Think of possible colleges or technical schools you may be interested in attending.
- Visit [www.bigfuture.collegeboard.org](http://www.bigfuture.collegeboard.org) to search and compare schools.
- List 5 possible schools along with application deadlines. Look at safe, reach, and stretch schools.

School Name/Website	Early Decision Deadline	Regular Admission Deadline	What appeals to me? (size, location, majors)	Special Information needed (recommendations, etc.)

- Attend a college fair.
- Seek out internships or chances to “shadow” people in careers you are interested in.
- Take challenging courses and subjects that will prepare you for your future.**
- If planning for Dual Enrollment in the Fall, application must be submitted to college along with ACT/SAT/Compass scores and transcript.

### Summer

- Look for volunteer opportunities.
- Plan College visits to campuses of interest.
- If your schools require recommendation letters, have 3 people in mind to ask when you return for senior year. Recommenders will need a resume, and/or senior profile worksheet.
- Begin working on your resume. Resume Builder on [www.gacollege411.org](http://www.gacollege411.org)
- Retake the ACT and/or SAT if you are not happy with your score.
- Look into more scholarship options.
- If accepted for dual enrollment, meet with high school counselor to finalize your schedule.

## Fall Semester (Senior Year)

- If you are applying for early admission to any colleges, make sure you notify your counselor asap.
- Order transcripts for out-of-state schools or send them on [www.gacollege411.org](http://www.gacollege411.org) for in-state schools
- Get those recommendation letters in EARLY (**GIVE 2 Weeks Notice**)!!! { Fill out the sheet in the counseling office..help us help you} .
- Complete your applications by the due date.
- Attend the financial aid meeting in January or February.

## Spring Semester (Senior Year 2016)

- Fill out the FAFSA for HOPE grant and scholarship at [www.fafsa.ed.gov](http://www.fafsa.ed.gov)
- Complete your Senior Exit Survey
- Make arrangements to have your final transcript sent to the college you have selected
- Final transcripts will be available by June 3<sup>rd</sup>, 2016
- All In-state transcripts will be sent via GACollege411, Out-of-state will be mailed

<b>GHS Promotion Requirements</b> <b>(Applies to all students entering GHS after August 1, 2006)</b>
---

**To go from Grade 9 to 10**

**Total: 5 units**

Update your IGP (Individual Graduation Plan)

**To go from Grade 10 to 11**

**Total: 11 units**

Update your IGP (Individual Graduation Plan)

**To go from Grade 11 to 12**

**Total: 19 units**

Update your IGP (Individual Graduation Plan)

# **GHS Graduation Requirements**

## **General Diploma (23 Units)**

- All students enrolling in the ninth grade for the first time in the 2008-2009 school year and subsequent years will receive a general high school diploma.
- The diploma will be awarded to students who have satisfied attendance, course/credit, and state assessment requirements.

## **English Language Arts (4 Units)**

- Four units of credit in English language arts are required and **must** include:
  - One unit of credit in 9<sup>th</sup> Grade Literature/Composition (EOCT)
  - One unit in American Literature/Composition (EOCT)

## **Mathematics (4 Units)**

- Four units of credit in math are required and **must** include:
  - Algebra I (EOCT) and II (EOCT), Geometry, a fourth year of advanced math or equivalent courses
  - Math I (EOCT), II (EOCT) , III and a fourth unit from the approved list, or equivalent courses

## **Science (4 Units)**

- Four units of credit in science are required and **must** include:
  - One unit of Biology (EOCT), One unit of either Physics or Physical Science (EOCT), One unit of Chemistry, One unit of Environmental Science or other GPS/AP course.

## **Social Studies (3 Units)**

- Four units of credit are required in social studies and **must** include:
  - One unit of World History, one unit of U.S. History (EOCT), one-half unit of Civics/American Government and one-half unit of Economics (EOCT).

## **Health .5, Personal Fitness .5 (1 Unit)**

- One unit of credit in health and personal fitness is required (one-half credit each).

## **Career Technical and Agricultural Education (CTAE), Fine Arts or World Language (3 Units)**

- Total 3 units required from the following areas:
  - CTAE, Fine Arts and /or World Language. Students are encouraged to select courses in a focused area of interest.
  - Students planning to enroll or transfer into a University System of Georgia or other post-secondary institution must take two units of the same world language.

## **Electives (4 units)**

- Any course a student selects beyond the core requirements to fulfill the unit requirements for graduation.

## **Georgia High School Writing Test**

Students must pass Georgia High School Writing Test (administered in junior year).

**Complete at least one Pathway in CTAE, World Language, Fine Arts or Advanced Academic**



## Honor Graduates

Throughout the high school years, individual grades are averaged together to establish an overall grade point average (GPA). Gainesville High School uses the GPA for several things, including determining if students are graduating with honors. Adopting the tiers used by most colleges to acknowledge honor graduates, the three levels with which a student can graduate include: Cum Laude, Magna Cum Laude and Summa Cum Laude. Each level requires a different cumulative GPA range.

**Cum Laude** – The first level of graduating with honors actually translates from Latin to mean “**with praise**”. If your GPA is **3.5-3.69** you will graduate with this honor of distinction.

**Magna Cum Laude** – The second highest level meaning “**with great honor**”. To qualify for this honor a student must have a cumulative GPA of **3.70-3.99**.

**Summa Cum Laude** – The highest of all honors issued at graduation. Meaning “**with highest praise**” in Latin, this honor is bestowed only on those who have the highest cumulative GPA of **4.0** and above.

### Course Weightings

Currently, all AP courses and courses taken through dual enrollment are given an additional 0.5 weight when computing student’s GPA on a 4.0 scale. (This is a GHS grading scale, HOPE Scholarship does not award weights above 4.0)

### Grading Scale and Grade Point Average (GPA)



<u>Reg. and Honors</u>	<u>Reg. and Honors</u>	<u>AP and Dual Weighted</u>
A = 90-100	4.0	4.5
B = 80-89	3.0	3.5
C = 70-79	2.0	2.5
Below 70	0	0

Each year, a member of the senior class shall be determined to be the **valedictorian** and **salutatorian** of that senior class. Selection of the **valedictorian shall be the student who has obtained the highest grade point average** on a 4.0 grading scale. The **salutatorian shall be the student who has obtained the second highest grade point average** on a 4.0 grading scale. The following guidelines apply to rewarding of this prestigious school based award:

1. The valedictorian and salutatorian must be students enrolled in the 12<sup>th</sup> grade and who graduate with their cohort class. Credits must have been earned from an accredited school. All Gainesville High School graduation requirement policies must be followed and all grades accepted and verified by the high school principal and counselor.
2. A student's graduation class is established by a student's ninth grade entry date.
3. The student must have attended GHS for at least three consecutive semesters immediately preceding the determination of the class valedictorian and salutatorian (1<sup>st</sup> semester junior year).
4. The valedictorian must have earned the highest grade point average in his/her graduating class based on the school's consistent use of a weighted scale. The salutatorian must have earned the second highest grade point average in his/her graduating class. The grade point average shall be determined by grades received in all approved high school classes where credit is awarded and accepted including: high school classes at middle school, online courses, dual enrollment, summer school, and other alternative options approved by the school and administration. All grades will be calculated using the Gainesville High School grade point system. The grade point average is calculated to the fourth place beyond the decimal point.
5. When the determination of valedictorian status between the top two honor graduates is affected by the fact that one of the students transferred to GHS from a different program of study (such as a non-block high school) and thus has fewer total courses and a lower denominator in calculating grade point average, co-valedictorians may be named. The naming of co-valedictorians may occur after comparing each student's four year program of study and it is determined that the difference in grade point average is based on the above mentioned mathematical anomaly.
6. **Final grades will be calculated after the "GHS Senior Grades deadline", during the second semester of 12<sup>th</sup> grade. All grades must be turned in by this deadline in order to be used in the calculation of Valedictorian and Salutatorian. The students will be notified by their counselor.**



Note

#### **Addendum: Tie Breakers**

If two or more students have the same grade point average, calculated to the fourth decimal place, the following criteria, in rank order, shall be used to determine valedictorian and/or salutatorian:

- a. The student with the highest number of credits earned from middle school through 12<sup>th</sup> grade shall be selected. This includes all electives and all non elective classes (i.e., band, chorus, driver's ed, etc.)
- b. If all students involved in the tie have or will have taken the SAT by the November SAT date, the student with the highest composite SAT score in one setting shall be selected (STAR student guidelines).
- c. If a tie still exists, the student who has earned the highest numerical average based on all courses taken and accepted for credit from middle school through first semester 12<sup>th</sup> grade shall be selected. The numerical average is calculated to the fourth place beyond the decimal point. All grades will be calculated using Gainesville High School's consistent use of a weighted scale.
- d. Beyond these measures, if a tie still exists between two or more students, the valedictorian or salutatorian honors will be shared.

## **GHS** Platinum Pride Program

The *Platinum Pride* card is designated to motivate and reward students for passing their required Milestones and GHSWT (Georgia High School Writing Test). One of the ways Gainesville High School is measured on the CCRPI (College and Career Readiness Performance Index) is by the number of students who pass all state tests.

### **Criteria for earning card:**

- Pass the GHSWT
- Must take all required Milestone assessments
- Must be on track for graduating with your cohort
- All school debt must be paid in full and cleared
- Must have completed or be in the process of completing your pathway in CTAE, World Language, Fine Arts or Advanced Academic

Students who earn the *Platinum Pride* card are also responsible for maintaining this privilege. *Platinum* students must remain in good academic standing and consistently demonstrate respect, restraint and responsibility at all times. Students who do not maintain these high standards may have their *Platinum* card rescinded. The *Platinum* program is provided solely at the principal's discretion and can be revoked at any time by an administrator.

### **Platinum Pride Privileges**

- Free Admission into all GHS athletic events
- Free Parking
- Free Locker
- Reduced Prom tickets

### **Community Discounts**

- Longstreet Café – free drink
- Moe's – 20% off
- Firehouse Subs – free chips & drink with purchase of a sandwich
- Bruster's - .50 off ice cream cone
- Rick's Smokin Pig – free drink with purchase
- Dress Up Boutique – 5% off
- Atlas Pizza – 10% off
- Collegiate – 10% off
- Sweet Magnolia's – free drink with purchase
- Mellow Mushroom – 20% off
- Sports Clip – 20% off

### **Online Learning**

Gainesville High School provides an online delivery of curriculum. The online courses allow students to be taught from a lab classroom or at home through instruction via the internet. Two online resources we use are: Edgenuity and Georgia Virtual School. Online course are designed for students to receive instruction virtually with the support of a classroom facilitator. The course assigned may be to repeat a course and recover credit, attempt for initial credit, or prepare for testing needs. See your counselor or Ms. Aiken for details.

### **Dual Enrollment/Dual Credit Programs**

Dual enrollment/Dual credit programs provide opportunities for Georgia High School students to take college-level courses and earn concurrent credit toward a high school diploma and a college degree while still in high school. Visit the GHS Counseling website for Dual Enrollment forms: <http://bigredguidance.weebly.com>

#### **Types of Dual Enrollment**

- ACCEL Dual Enrollment
- HOPE Grant Dual Enrollment
- Move On When Ready
- Joint Enrollment (not dual)

#### **Quick Checklist for the dual enrollment process**

- First and foremost, investigate and discuss Dual Enrollment information with parents and GHS school counselor.**
- Take the tests required by your chosen institution and determine if you meet the admissions criteria for the dual enrollment program: GPA, test scores, number of credits, etc.**
- Apply for admission as a dual enrollment student to the college.**
- When accepted you must notify your GHS counselor and present your acceptance letter.**
- You must meet with the dual enrollment coordinator at the college of your choice to choose classes and register.**
- Depending on your DE program, apply for ACCEL or the HOPE Grant online at [www.gacollege411.org](http://www.gacollege411.org). Go to Financial Aid Planning Tab and follow the appropriate prompts, HOPE Grant, etc.**
- Make an appointment for you and your parents with your GHS counselor to finalize paperwork and to add your college classes to GHS schedule. Bring your college schedule to this mandatory meeting.**

- Very Important: College withdrawal guidelines differ from high school drop/add dates. You are bound by the drop/add rules of GHS which allows 10 days (from the first day you start class) to drop a dual enrollment course.**

### **Dual Enrollment Parent/Student Considerations**

#### **Some important points to remember as you consider Dual Enrollment Options:**

- You will be a college student – with the responsibilities of a college student. Most college classes only allow 2 or 3 absences. Many instructors will drop you from their roll if you do not attend. A failing grade will be posted to your GHS transcript if you fail or drop a Dual Enrollment college course.
- How will the Dual Enrollment college credit be accepted? Not all colleges will accept our local dual enrollment credits –especially selective colleges outside the state of Georgia.
- Many highly competitive colleges prefer AP classes to dual enrollment classes. Check with your future college prospects to find out how it might affect your admission.
- You will need to take classes to complete your high school requirements. If your dual enrollment course requires a state Milestone (such as Economics, US History, etc.) you are responsible for scheduling the test at your high school during the high school testing window. No credit will be awarded without the state Milestone exam. We cannot give the Milestone outside the state testing window.
- To participate in the ACCEL program, students must be determined by the college to be HOPE eligible (3.0 academic GPA- **minimum**) at the time of their admissions review.
- Although tuition is paid for all approved coursework, you will still encounter these and other expenses: transportation, books, labs, parking fees, activity fees. You must provide your own transportation.
- You may have to pay extra if you take classes that are not on the approved list.
- Your high school HOPE GPA is determined when you graduate from high school. If you do poorly in dual enrollment, it will affect your HOPE GPA. There is a possibility you may lose HOPE before you graduate and not receive it during your freshman year of college.

Remember that you must approach this dual-enrollment process as a mature and responsible college-bound student. The beginning of this process is investigating the information on our website. Go to <http://bigredguidance.weebly.com> and select the **College Credit Now/Dual Enrollment tab**. You may also access the School Counseling page through the main Gainesville High school website. You should print the information, read it carefully, and formulate and write down questions you may have. If you meet the requirements, share this information and discuss with your parents. You and your parent will be required to meet with your counselor if you decide to participate in Dual Enrollment.

## **Performing and Visual Artists**

Much like the athletes, performing and visual artists will need to communicate with the departments on their respective campuses. You will need a specific resume or portfolio to showcase your talent. The performing artists will in all likelihood need to audition or present a portfolio. Begin communicating with colleges no later than your junior year to learn their schedules and timetables for audition and portfolio requirements. Be sure to check with ALL colleges on your list of possible colleges.



Students with artistic talent should register at: <http://www.onlinecollegenetwork.com>

For students interested in pursuing a career in music, you might begin your search with the following: [www.musicsearch.com](http://www.musicsearch.com) This site helps students find the right college level music school or recording school. It allows the student to look for certain fields of music such as performance, music theatre or musicology.

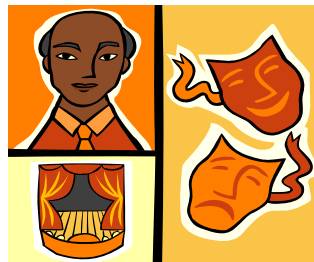
For current information on local performing arts fairs, the following website is available: <http://www.nacac.com/exhibit.sfm?code=02PDA>

National Portfolio Day brings together experienced college representatives to review work and offer critique. NPD also offers a forum for the exchange of information regarding work, college plans and career plans. For more information visit the following website: [www.npda.org/events.html](http://www.npda.org/events.html)



[www.schoolofvisualarts.edu](http://www.schoolofvisualarts.edu)

Thespians please check with ALL of your colleges to determine respective audition times, places and requirements. You will often be required to perform different genres.



## **Service Academies**

An appointment to a United States Military Academy such as West Point, Air Force or the Naval Academy is considered to be a \$285,000 scholarship. It takes a strong desire to serve your country. The application process is tedious and life as a cadet is rigorous. The opportunity is without limits for the right applicant. The process is outlined below:

### **Sophomore or Junior Year**

1. Contact the academy and ask them to put you in contact with the liaison officer in your area. Make sure your counselor knows about your interest in the academy.

### **Junior Year**

1. Make sure you take the PSAT (Fall semester, one time only)
2. Ask the liaison officer to help you apply for the special summer program
3. Apply for a nomination through your Congressman
4. Take the SAT and/or ACT (Spring semester)

### **Summer before Senior Year**

1. Take medical and physical aptitude tests as directed by the academy
2. Complete applications to the academy
3. Complete application s to the Congressman

### **Several tasks must be accomplished simultaneously:**

1. Contact the academy to complete the pre-candidate information
2. You must request a nomination to a military academy from your United States Congressman and Senators
3. Contact the U.S. Senators for your state at [www.senate.gov](http://www.senate.gov)

Contact the Congressman representing your district. Use this website for this information: [www.house.gov](http://www.house.gov) Many Congressmen have their academy applications available online.

### **Academy Contact Information**

Air Force  
[www.usafa.edu](http://www.usafa.edu)  
1-800-423-8723

Army – West Point  
[www.usma.edu](http://www.usma.edu)  
1-800-872-2769

Navy  
[www.usna.edu](http://www.usna.edu)  
1-800-872-6289

Coast Guard  
[www.uscg.edu](http://www.uscg.edu)  
1-877-NOW-USCG

Merchant Marines  
[www.usmma.edu](http://www.usmma.edu)  
1-866-546-4778

## The ASVAB Career Exploration Program

Your decision to enter college, technical school, military or the civilian world of work is an important one. The ASVAB Career Exploration Program is designed to help you, no matter what future educational and career plans you may be considering.

### What is ASVAB?

The Armed Services Vocational Aptitude Battery (ASVAB) is a multi-aptitude test battery that is designed to measure your aptitudes (abilities) at this time in your life. It consists of eight short individual tests covering verbal skills, math skill, science and technical skills. It is offered at **no cost** and **no obligation** to high school juniors and seniors.

### How can the ASVAB be used to explore careers?

You can use your ASVAB results with *Exploring Careers: The ASVAB Career Exploration Guide*. Every student who takes the ASVAB receives a copy of the Guide. It has a series of activities that will enable you to match your interests, abilities, and personal preferences to over 450 civilian and military occupations.

### Should you take the ASVAB if you plan to go to college?

**Absolutely.** *The ASVAB Career Exploration Program* provides you with Math, Verbal, and Science and Technical career exploration scores which can help you gauge your readiness for college. These scores can help you better understand your academic strengths and weaknesses. The ***Interest-Finder*** results tell you about your career-related interests which can help you choose potentially satisfying courses of study and a major that will hold your interest. The bottom line is that the ***ASVAB Career Exploration Program*** can help you confirm your current college plans and identify other college options that you may not have considered. Investing a few hours in your future now could save you lots of time later.

### What is the relationship between the ASVAB and the military?

If you are a junior or a senior, you can use scores from your ASVAB to enlist in the military after graduation. However, you are under **no obligation** to join the military as a result of taking the ASVAB. **Most students take the ASVAB for career exploration and have no interest in the Armed Services.** Others wish to explore military career possibilities. If you have high scores, recruiters may contact you to discuss current career opportunities and available scholarship monies. If you are interested, you may talk with them. If not, just say “**Thank you, sorry, not interested.**” Furthermore, there is no relationship between the ASVAB and Selective Service Registration.

## The ASSET or COMPASS Placement Tests

### What is the ASSET or COMPASS?

The ASSET/COMPASS program is a series of short placement tests developed by American College Testing (ACT) for students interested in attending any technical college in Georgia. The ASSET is a paper and pencil test while the COMPASS is taken on the computer. The results are valid for five 5 years.



## SAT and ACT Information

All colleges/universities require some type of entrance or placement examination. Most colleges and universities in the U.S. will except either the SAT (Scholastic Aptitude Test) or ACT (American College Test). You may take either or both tests several times to improve your score. Please consult with the college or university of your choice for specific requirements. Most schools in the south accept either test! Always double check with the admissions office.

Some colleges/universities require the SAT II (subject tests). Check with the college board or your selected college/university to see if they require the SAT II for admission.

For the SAT Test Question of the Day go to: <https://sat.collegeboard.com/practice/sat-question-of-the-day>.

### SAT Testing Calendar for 2014-2015

<http://sat.collegeboard.com/registration/sat-dates>

Test Date	Registration Deadline	Late Registration Deadline
October 11, 2014	September 12, 2014	September 26, 2014
November 8, 2014	October 3, 2014	October 24, 2014
December 6, 2014	November 6, 2014	November 21, 2014
January 24, 2015	December 29, 2014	January 9, 2015
March 14, 2015	February 13, 2015	February 27, 2015
May 2, 2015	April 6, 2015	April 17, 2015
June 6, 2015	May 8, 2015	May 22, 2015

### ACT Testing Calendar for 2014-2015

Register online at [www.act.org](http://www.act.org)

Test Date	Registration Deadline	(Late Fee Required)
September 13, 2014	August 8, 2014	August 9-22, 2014
October 25, 2014	September 19, 2014	September 20-October 3, 2014
December 13, 2014	November 7, 2014	November 8-21, 2014
February 7, 2015	January 9, 2015	January 10-16, 2015
April 18, 2015	March 13, 2015	March 14-27, 2015
June 13, 2015	May 8, 2015	May 9-22, 2015

Students must request test scores be sent directly from the College Board for SAT or from ACT to individual colleges. Your high school transcript will not have test scores that can be utilized by college admission offices or the NCAA Clearinghouse or NAIA.

## SAT vs. ACT

### SAT

**Basic Format:**

3 math sections  
2 reading sections  
3 writing sections (2 grammar, 1 essay)  
1 experimental section (un scored)

**Philosophy:**

Rewards logic and aptitude. Requires basic grasp of math and English.

**Material Covered:**

Arithmetic  
Algebra  
Geometry  
Advanced Algebra  
Vocabulary  
Reading Comprehension  
Grammar/Editing  
Essay writing

**Timing:**

Very long day...4.5 hours of testing.  
Slower pace... usually more than a minute per question.

**Scoring:**

Each subject is graded on a 200-800 scale. 500 is the national average of each. Typically, the score is reported as a sum of the math and reading (out of 1600) or of all three parts (out of 2400).

**Superscoring:**

Most schools will super score the SAT, meaning they will take the best math, best reading, and best writing score, even if they are from different sittings.

**Guessing Penalty:**

Yes, meaning student should not take wild guess, only educated one.

**Registration:** [www.collegeboard.org](http://www.collegeboard.org)

### ACT

**Basic Format:**

1 English section  
1 math section  
1 reading section  
1 science section

**Philosophy:**

Rewards hard work in school and strong grasp of material (No formulas given.)

**Material Covered:**

Arithmetic  
Algebra  
Geometry  
Advanced Algebra/Basic Trig.  
Reading Comprehension  
Graph/Chart Comprehension  
Grammar/Editing  
Essay writing

**Timing:**

Long day...3 hours of testing.  
Faster pace...usually less than a minute per question.

**Scoring:**

Each subject is graded on a 1-36 scale. 21 is the national average in each. The four subject scores are averaged, and a cumulative score is reported. This is also on a 1-36 scale.

**Superscoring:**

Most schools will not super score the ACT, but they will take the highest cumulative.

**Guessing Penalty:**

No, meaning a student should never leave an answer blank. Guess!

**Registration:** [www.actstudent.org](http://www.actstudent.org)

## Recommended COLLEGE APPLICATION PROCESS

**Step 1** – Research colleges for academic, financial and personal fit. Plan a college visit or complete a virtual tour. As a senior, you will be able to have 3 excused absences for college visits. Please visit the Counseling office for appropriate paperwork at least one week before your visit.

**Step 2** – Apply to colleges online using the college’s website, GACollege411 or the **Common Application**. *Take note of deadlines imposed by the college, and plan ahead.*

**Important information for college applications:**  
**Gainesville High School**  
**830 Century Place**  
**Gainesville, GA 30501**

**Main Number:** (770)536-4441 **Fax Number:** CEEB School Code: 111385  
**School Website:** [www.gcssk12.net](http://www.gcssk12.net) **Counseling Website:** [www.bigredguidance.weebly.com](http://www.bigredguidance.weebly.com)

**Step 3** – Personally have SAT/ACT scores sent directly from the issuing agency (SAT: [www.collegeboard.org](http://www.collegeboard.org)); (ACT: [www.actstudent.org](http://www.actstudent.org)).

**Step 4** – If required by the college, request teacher recommendations *at least 2* weeks ahead of deadlines. Provide your teacher with a resume or come to the counseling office to pick up a Senior Profile Worksheet. Please check with your college to see if they require electronic forms or if they prefer everything to be mailed with your transcript packet.

**Step 5** – For counselor letters of recommendation, you will need to provide the counselor with a resume or Senior Profile Worksheet at least 2 weeks before the deadline. Some colleges want your recommendation to be mailed with your transcript; please check with your schools.

**Step 6** – Send your transcripts. For in-state schools, you can send your transcripts for free using [www.gacollege411.org](http://www.gacollege411.org). If you are applying to out-of-state schools, complete a transcript request form (available in the counseling office). Each paper transcript will be available for pick-up 24 hours after your request is submitted.

**Step 7** – In January of Senior year, you will need to complete your FAFSA (Federal Application for Student Aid). Begin your FAFSA by signing up for a PIN. Visit [www.pin.ed.gov](http://www.pin.ed.gov) for more information. The application is completed electronically on [www.fafsa.ed.gov](http://www.fafsa.ed.gov). You will need W2’s for you and your parents from the previous year to complete the application. All documents needed are listed on the FAFSA website.

# **TYPES OF ADMISSIONS DECISIONS**

The following are some of the most frequently mentioned admissions practices.

## **Early Decision**

Early decision allows a student to apply between October and mid-January for an early determination of admissibility. If accepted, the student is obligated to attend. The student may submit other applications during this period, but only one can be Early Decision. If accepted through the Early Decision program, the student must withdraw all other applications. **Please keep in mind that if you apply for Early Decision and are accepted, IT IS BINDING!**

## **Early Action**

Early Action is a plan offered by a few schools that invites early applications but does not require the student to attend if accepted. The application deadline is usually in early November. It allows the student to receive notice of admission but is not binding. The student has until May 1<sup>st</sup> to inform the school of his/her decision.

## **Deferred Decision**

The college or university determines that more information is needed to make a final decision about a candidate's application. Often the decision is delayed until the second semester and/or new test scores are received.

## **Rolling Admissions**

The college will notify the applicant as soon as the application has been processed (usually four to six weeks) and the file is complete. It is to the student's advantage to apply early.

## **Open Admissions**

Students are accepted upon application (usually community colleges).

## **Deferred Admission**

Deferred Admission permits a student, once accepted, to postpone matriculation for one year in order to pursue other plans.

## Exploring Post-Secondary Options

***Remember that there are over 7,000 post-secondary options in the United States. You have a lot of choices when it comes to higher education. What's next after high school? Even if you're unsure what path to take after graduation, you have to start planning now for your future. The same skills and knowledge needed to get into college are the same needed to get a good job.***

### **Degree Programs:**

1. ***Certificate and Diploma Programs:*** Usually a program you can finish in less than two years, sometimes one. These programs are very career-specific and lead to employment opportunities.
2. ***Associate of Arts (A.A.) or Associate of Science (A.S.):*** A degree awarded after completing a two-year college program.
3. ***Bachelor of Arts (B.A.) or Bachelor of Science (B.S.):*** A degree awarded after completing four- or five-year college program.

### **Four-year Universities and Colleges offer B.S or B.S. degrees**

1. Most four-year college students focus on coursework full time and work no more than part-time. Graduates from four-year colleges and universities are in greater demand by employers and generally earn more money than non-graduates. Tuition costs can be high and may include fees or living on-campus, but some financial aid is available for all students.
2. A common misconception is that you need to know what you want to do before going to college. On the contrary, college is a place to explore your interests and abilities in a multitude of new areas. Liberal Arts colleges, for example, encourage you to experiment in different fields before declaring a major. Most colleges require students to declare their major by the end of sophomore year. Students who do know what they want to major in can often apply to that area of study from the very beginning. Undecided students can sample a variety of courses before concentrating.

### **Community/ Technical colleges generally require 2 years of coursework to earn a degree.**

These schools are open to everyone, though a high school diploma or GED is usually required. They are relatively inexpensive and offer flexible class schedules. It is often possible to transfer to a four-year school to get a B.A. or B.S. after earning your Associate's degree.

### **U.S military provides training and money for education.**

Options include enlistment, military academies and Reserve Officer Training Corps (ROTC) programs. Many colleges and universities offer ROTC programs for one or more branches of the military. In addition to regular coursework, ROTC cadets take classes on military science and participate in physical and leadership training outside of the classroom. ROTC graduates can earn a B.A. or B.S., but most enter the military as an officer with a four-year active duty or eight-year inactive duty commitment after college.

## BUILDING A COLLEGE LIST

**When building a college list it is important to consider the following characteristics:**

- Campus Size/Student Population
- Location: City, Suburban, Rural
- Cost: Tuition, Financial Aid, Scholarships
- Programs and Majors Offered
- On-Campus Activities: Sports and Greek System

**After you determine a college is a good fit for you and your interests and personality, it is generally a good rule to follow these guidelines when you are deciding where to apply:**

**Students should have on their list:**

- One or two safety colleges:** colleges to which they will almost certainly be admitted.
- Some “matches”:** colleges where their GPA, test scores, and other features look very similar to those of recent entering classes.
- A reach (or two):** colleges where they meet the criteria for admission but may not have the stellar qualifications of most first year students.

**Generally speaking, colleges fall into 6 admissions categories ranging from Most Competitive to Noncompetitive based on GPA, class rank, test scores, and the school’s acceptance rank. When making admissions decisions, many colleges take into consideration the applicant pool, rigor of curriculum, recommendations, special talents, leadership, essays, intellectual curiosity, and your level of interest.**

### Most Competitive Schools

**GPA Class Rank:** Typically accept students with an A average/are in the *top 10% of their class or higher*.

**Test Scores:** Median SAT of 655 to 800 on critical reading and math / 29 and above score on the ACT.

**Acceptance Rate:** Many admit only a small percentage (1% to 33%) of students who apply.

**Examples:** Duke, Brown, Harvard, the Military Academies, Princeton, Stanford, Yale, Emory, Columbia

### Highly Competitive Schools

**GPA and Class Rank:** Look for students with *at least a B or B+ average in rigor high school classes*. Accept most of their students from the top 10% to 35% of their high school class.

**Test Scores:** Median SAT of 620 to 654 on SAT critical reading and math/ 27 to 28 composite on the ACT.

**Acceptance Rate:** Generally accept between 33% and 50% of their applicants.

**Examples:** Georgia Tech, University of Georgia, University of Florida, Furman, Oglethorpe, New York University, Boston University, Vanderbilt, UNC Chapel Hill

## Very Competitive Schools

**GPA and Class Rank:** Look for students with at least a B- average and students that rank *in the top 35% to 50% of their class or higher*.

**Test Scores:** Median SAT of 572 to 620 on SAT critical reading and math / 23 to 27 composite on the ACT.

**Acceptance Rate:** generally accept between 50% and 75% of their applicants

**Examples:** North Georgia, Georgia College, Georgia State University, Appalachian State University, University of Tennessee, University of Alabama, Clemson

## Competitive Schools

**GPA and Class Rank:** Some require that students have at least a high school GPA of B- or better, although some state a minimum of C+ or C. They typically admit students *in the top 50% to 65% of their high school class or higher*.

**Test Scores:** Median SAT between 500 to 572 on critical reading and math / 21 and 23 composite on the ACT.

**Acceptance Rate:** generally accept 75% to 85% of their applicants.

**Examples:** Valdosta, Georgia Southern, Kennesaw State, Auburn

## Less Competitive Schools

**GPA and Class Rank:** Admit students with averages below C who rank in the top 65% of their class.

**Test Scores:** The median freshman test scores are *below 500 SAT critical reading and math and below 21 on the ACT*.

**Acceptance Rate:** generally accept 85% or more of their applicants.

**Examples:** Georgia Gwinnett College, West Georgia, Augusta State, Savannah State, Columbus State, Clayton State

## Noncompetitive Schools

**GPA and Class Rank:** Only require evidence of graduation from high school or GED.

**Test Scores:** Some require that entrance exams be taken for placement purposes only.

**Acceptance Rate:** generally accept 98% or more of their applicants.

**Examples:** Georgia Perimeter, Gwinnett Tech, Lanier Tech, Athens Tech, Chattahoochee Tech

# PAYING FOR COLLEGE

## Breakdown of the Financial Aid Terminology:

### It all starts with the FAFSA (Free Application for Federal Student Aid)

With this one application, you can apply for financial aid at multiple colleges and from multiple funding sources. You will need to complete the FAFSA every year, starting after January 1<sup>st</sup>.

- **Scholarships:** An award that does not have to be repaid. Scholarships are generally granted based on an applicant meeting certain eligibility criteria.
- **Grants:** A grant is a financial award given to a student for the purposes of paying for all or part of college expense. A grant does not need to be repaid by the student.
- **Loans:** Financial Aid awards that the student or parent borrows from a lender, the school or other third party. Loans must be repaid by the borrower, usually with interest.
- **Work Study:** Allows a student to earn money by working part time somewhere on campus.

### Sources of Financial Aid:

- **Federal Government:** The federal government is the largest source of financial aid. Awards are based on financial need. Students fill out the Federal Application for Student Aid each year. Visit [www.fafsa.gov](http://www.fafsa.gov) for additional information.
- **Colleges and Universities:** Schools offer a wide variety of aid and scholarships to students. These awards are both merit-based and need-based. Students might need to complete an additional application for scholarships or it may be offered as part of the admissions process. Contact your school of interest for additional information.
- **Private Sources:** Churches, companies, and other organizations offer a variety of scholarships for students. Each organization has a specific set of qualification requirements. For additional information contact local organizations or visit scholarship search websites.

### Georgia's Hope Program:

- The **HOPE Scholarship** program is for students that are seeking a college degree and plan on attending college in Georgia. A 3.0 GPA in academic courses (Language Arts, Social Studies, Math, Science, and Foreign Language) is required. A part of your college tuition will be covered. This amount will vary depending on projected lottery revenues and expenditures.
- The **HOPE Grant** program is for students seeking a technical certification or diploma, regardless of the student's high school grade point average or graduation date. This will cover a certain percentage of tuition at a Georgia public technical college or public college or university.
- The **Zell Miller Scholarship** program is for students who have demonstrated academic achievement and that are seeking a college degree in Georgia. To become eligible, a student must graduate with a 3.70 GPA in academic courses and a minimum score of 1200 on the SAT (Critical Reading and Math, one sitting) or 26 on the ACT in one sitting.

**You can check your HOPE GPA using [www.gacollege411.org](http://www.gacollege411.org).**



## How To Get an Unofficial Calculation of your HOPE GPA

Georgia's HOPE Scholarship is available to Georgia residents who have demonstrated academic achievement. The scholarship provides money to assist students with their educational costs of attending a HOPE eligible college in Georgia. To get a full overview and eligibility requirements, go to [www.gacollege411.org](http://www.gacollege411.org).

The steps below will help you understand the HOPE GPA calculations and unofficially calculate your HOPE GPA. This is based on information provided to us by the Georgia Finance Commission.

Your HOPE GPA will be determined by the Georgia Student Finance Commission, not by the school system. If you have any detailed questions or concerns, please feel free to visit the Georgia Student Finance Commission website at [www.gsfc.org](http://www.gsfc.org) or call them at 1-800-505-GSFC.

### 1. Identify Courses That Count Towards Your HOPE GPA

The grades for all attempted (passed and failed) academic courses will be converted to a 4.0 scale and included in your HOPE GPA except courses taken in middle school for high school credit. Academic courses include courses in the areas of English, Math, Science, Social Studies, and Foreign Languages. No arts courses whatsoever are used for HOPE calculations.

To identify academic courses on your transcript, use the following guide:

- All English courses with course numbers beginning with 23.
- All Math courses with course numbers beginning with 27.
- All Science courses with course numbers beginning with 26 or 40
- All Social Studies courses with course numbers beginning with 45.
- All Foreign Language courses with course numbers beginning with 60-64.

Remember, courses taken in middle school for high school credit do not count toward HOPE.

### 2. Convert Grades to the 4.0 scale using the HOPE Scale

<u>Reg. and Honors</u>	<u>Reg. and Honors</u>	<u>DE, AP, IB Weighted</u>
A = 90-100	4.0	4.0 (the highest GPA given by HOPE)
B = 80-89	3.0	3.5
C = 70-79	2.0	2.5
Below 70	0	0

If you fail an academic course, that failed grade will also count. For example, if you failed Coordinate Algebra and took Coordinate Algebra again in summer school, both grades will count.

### 3. Adjust For Dual Enrollment and AP Courses

If the course in a Dual Enrollment course or an Advanced Placement (AP) course (or an IB course for students who transfer from and IB program), add .5 to your converted grade (on a 4.0 scale), unless your grade is already 4.0 or if you failed the course. So, for AP courses, your grade on a 4.0 scale will be one of the following: 4.0, 3.5, 2.5, or 0. Extra weight is not given to Honors courses.

### 4. Calculate Your Average

Your transcript includes both half year classes and full year classes. Count the full year class grades twice and each half year grade once. Add up all of the scores (on the 4.0 scale), and divide by the total number (remembering that you counted full year courses twice). Do not round up. Your GPA will not be rounded up for the purposes of determining HOPE eligibility. This calculation should give you a good estimate of your current standing.

**A final HOPE average (at the end of senior year) of 3.0 or greater (without rounding) will be required to qualify for the HOPE scholarship.**

## College and Career Planning

[www.gacollege411.org](http://www.gacollege411.org) – College search, scholarships, career assessments, HOPE GPA and more  
[www.elegibilitycenter.org](http://www.elegibilitycenter.org) NCAA – Athletes must fill out form and sent transcript  
[www.playnaia.org](http://www.playnaia.org) NAIA – Athletes must fill out form and sent transcript  
[www.njcaa.org](http://www.njcaa.org) NJCAA - National Junior College Athletic Association  
[www.bigfuture.collegeboard.org](http://www.bigfuture.collegeboard.org) College Exploration, Comparisons, Scholarships  
[www.zinch.com](http://www.zinch.com) College Search, Admission Chances, Scholarships  
[www.cappex.org](http://www.cappex.org) College Search, Scholarships  
[www.commonapp.org](http://www.commonapp.org) Common Application Forms, completing multiple applications at one time  
[www.collegeview.com](http://www.collegeview.com) College Search, Application Process, Financial Aid, Majors  
[www.collegenet.com](http://www.collegenet.com) College search, Scholarships  
[www.usnews.com/rankings](http://www.usnews.com/rankings) College and University Rankings  
[www.electroniccampus.org](http://www.electroniccampus.org) College Search, Financial Aid, Careers  
[www.collegeconfidential.com](http://www.collegeconfidential.com) College Search, Admissions, Paying for College  
[www.peterson.com](http://www.peterson.com) Guide to Colleges and Universities  
[www.collegeweeklive.com](http://www.collegeweeklive.com) College Search, Scholarships, Applications

## Financial Aid and Scholarships

[www.fafsa.ed.gov](http://www.fafsa.ed.gov) Federal Application for Financial Aid  
[www.studentaid.ed.gov](http://www.studentaid.ed.gov) Financial Aid Explanations  
[www.finaid.com](http://www.finaid.com) Scholarships, Loans, Savings, Military Aid  
[www.fastweb.com](http://www.fastweb.com) Scholarship Search  
[www.qocollege.com](http://www.qocollege.com) Scholarships, Loans, Grants  
[www.scholarships.com](http://www.scholarships.com) Scholarship Search  
[www.scholarshipsandgrants.us/](http://www.scholarshipsandgrants.us/) - Scholarship search  
[www.studentscholarships.org](http://www.studentscholarships.org) Scholarship Search, Career Information, College Search  
[www.thesalliemafund.org](http://www.thesalliemafund.org) Scholarships for minorities, all (includes black college dollars)  
[www.blackstudents.com](http://www.blackstudents.com) Scholarships for Black students  
[www.maldef.org](http://www.maldef.org) Scholarship information for Latinos

## Test Information and Prep

[www.collegeboard.org](http://www.collegeboard.org) PSAT, SAT and AP information, dates  
[www.actstudent.org](http://www.actstudent.org) ACT registration and information, dates  
[www.princetonreview.com](http://www.princetonreview.com) SAT, ACT, PSAT and AP prep  
[www.kaptest.com](http://www.kaptest.com) Free online practice tests for ACT, SAT and PSAT  
[www.march2success.com](http://www.march2success.com) FREE SAT and ACT Prep

## Academic Majors

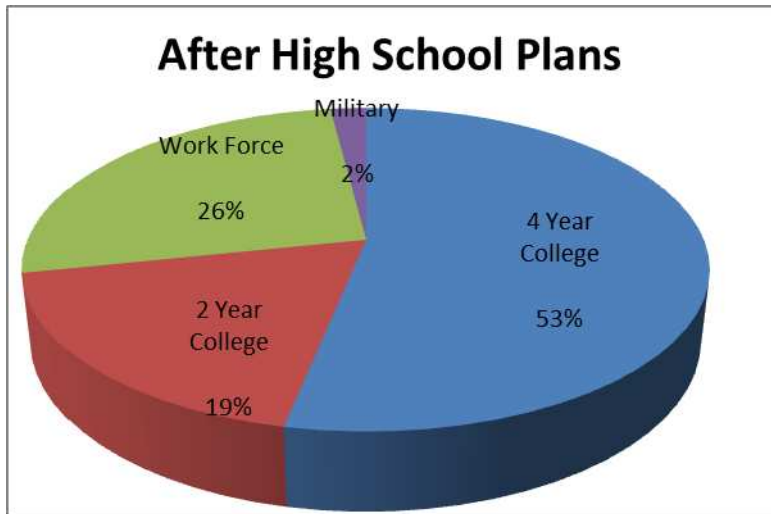
[www.careercruising.com](http://www.careercruising.com) Career Guidance  
[www.mymajors.com](http://www.mymajors.com) Majors, Careers, and Schools  
[www.collegemajors101.com](http://www.collegemajors101.com) Major and Career Information, every major has it's own channel with videos

## Career and Employment Planning

[www.ajb.dni.us](http://www.ajb.dni.us) America's job bank, Career One stop, find your pathway  
[www.careerpath.com](http://www.careerpath.com) Career Information, Career and Personality Tests, career builder network  
[www.onetcenter.org](http://www.onetcenter.org) Occupational Information Network, helping you learn about jobs in the world of work  
[www.myfuture.com](http://www.myfuture.com) College, Career and Military Search, figure out what's next, think "dream job"

## GHS Class of 2014

Based on the GHS 2014 Senior Exit Surveys, the post-secondary Institutions listed represent the responses gathered from the majority of this year's graduating class.



Approximately 352 students in the class of 2014

- 53% Attending 4-year colleges
- 19% Attending 2-year or technical colleges
- 26% Going into the workforce
- 2% Going to the military
- 30% Honor Graduates
  - 17 Summa Cum Laude (4.0+)
  - 33 Magna Cum Laude (3.7-3.999)
  - 43 Cum Laude (3.5-3.6999)

**Over  
\$500,000  
in Scholarships**

(Not including the HOPE and Zell Miller Scholarships)

- Albany State University
- Armstrong Atlantic
- Auburn University
- Berry College
- Bethune-Cookman University
- Brenau University
- Central Michigan University
- Concordia College
- Converse College
- Davidson College
- Embry-Riddle Aeronautical University
- Emmanuel College
- Furman University
- Gardner Webb
- Georgia Gwinnett College
- Georgia Military College
- Georgia Perimeter
- Georgia Southern
- Georgia State University
- Georgia Institute of Technology
- Jacksonville State University
- Kaplan University
- Kennesaw State University
- Lanier Tech
- Life University
- Limestone College
- Lindsey Wilson College
- Mercer University
- Morehouse College
- Mt. Olive University
- North Carolina State University
- North Greenville University
- New York University
- Oglethorpe
- Penn State University
- Piedmont College
- Presbyterian College
- Savannah College of Art & Design (SCAD)
- Savannah State University
- Shorter College
- Southern Polytechnic State University
- St. John's University
- Tennessee Temple University
- Truett McConnell
- University of Alabama
- University of Cincinnati
- University of the Cumberlands
- University of Georgia
- University of North Georgia
- University of Tennessee
- University of Virginia
- University of West Georgia
- Valdosta State
- Warm Springs
- Western Carolina
- Whitworth University
- Wofford
- Yale University
- Young Americans Performing Arts College
- Young Harris College

### Transcript Request for In-State Colleges and NCAA

- ❖ Log onto GACollege411.org
- ❖ Click Sign-in, top right corner
- ❖ Enter Account Name and Password (if you do not remember, you will need to create a new account to include your Social Security number)
- ❖ Select College Planning tab
- ❖ Applications
- ❖ Request and Track Your Transcript
- ❖ Choose the college(s) and continue

If you need your transcript sent to an out-of-state college, you will need to complete a College Application Transcript Request Form in the Counseling Office.

### How to check your HOPE GPA Online

- ❖ Go to [www.GACollege411.org](http://www.GACollege411.org)
- ❖ Click on Your HOPE GPA
- ❖ Enter Account Name and Password (if you do not remember, you will need to create a new account to include your **Social Security** number)
- ❖ Select **"G" for Gainesville High School-Hall**
- ❖ Your HOPE GPA Report will appear
- ❖ View your Detailed GPA Report

Note: Your last name, social security number and date of birth must be included in your GACollege411 profile to access your HOPE GPA Report. You must also have elected to share your personal information by selecting that profile setting.