



# Zip™ Surgical Skin Closure

Suture-like outcomes at the speed of staples<sup>1,3</sup>



- Less Risk of Infection<sup>2</sup>
- Faster than Sutures<sup>3</sup>
- Better Cosmetic Outcomes than Staples<sup>1</sup>

# Suture-like outcomes... at the speed of staples

## Clinical Benefits

### ...vs. Suture, Glue and Staples

- Faster - save 5-10 minutes per incision<sup>1</sup>
- No skin piercing, reduced SSI, needle stick risk
- Designed to isolate wound from patient movement for reduced edema and faster healing
- May eliminate staple removal visit
- Improved cosmesis - no track marks
- Comfortable - conforms to body

## Economic Benefits

- **Save \$538 in labor costs per procedure** (OR time, staff, materials, cost of removal) vs. staples and glue<sup>4</sup>
- **Reduced Surgical Site Infection (SSI) risk:** \$25,546 mean cost associated with a single incidence of SSI<sup>5</sup>
- **Reduced Needle Stick Injury risk:** \$596 average treatment cost for staff needle stick injury<sup>6</sup>



Device may be cut for shorter incisions



**Device :** Rapid, non-invasive skin closure modality

**Replaces :** Skin sutures, staples and glue

**Procedures :** Include pacemaker/ICD, total hip arthroplasty, spine, skin excision, laceration, total shoulder arthroplasty

**Incisions :** Zip™ 15 - up to 15cm (can be cut to 5 or 10cm)

Zip™ 8 - up to 8cm (can be reduced in length down to 2cm)

**Wear duration :** Up to 14 days (removed by peeling from skin)

**Regulatory :** FDA Class 1 Exempt device



## Application Examples

### Pacemaker Implant



Day 30 Post-Op

### Combine Devices for Longer Incisions

Total Shoulder Arthroplasty-  
two Zip™ 8 devices combined  
for 14 cm incision



### Excision of Melanoma



Day 21 Post-Op with device



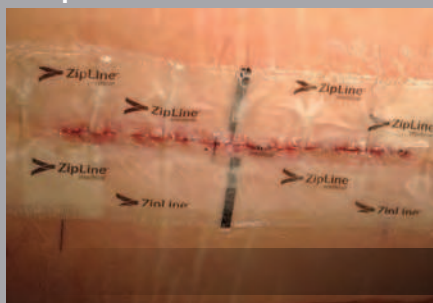
Day 21 Post-Op



Day 21 Post-Op



### Spine 2-Level PLIF



Day 12 Post-Op



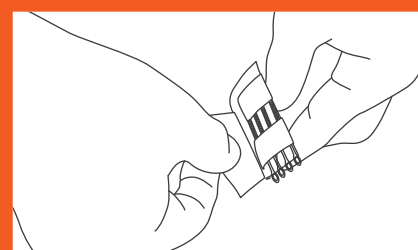
### Total Hip Arthroplasty



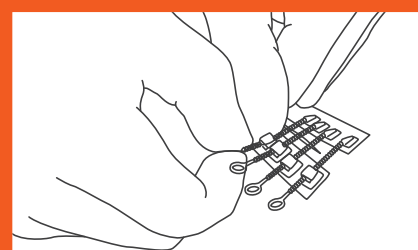
Day 28 Post-Op



**1** Peel and place on incision



**2** Adjust closure tension



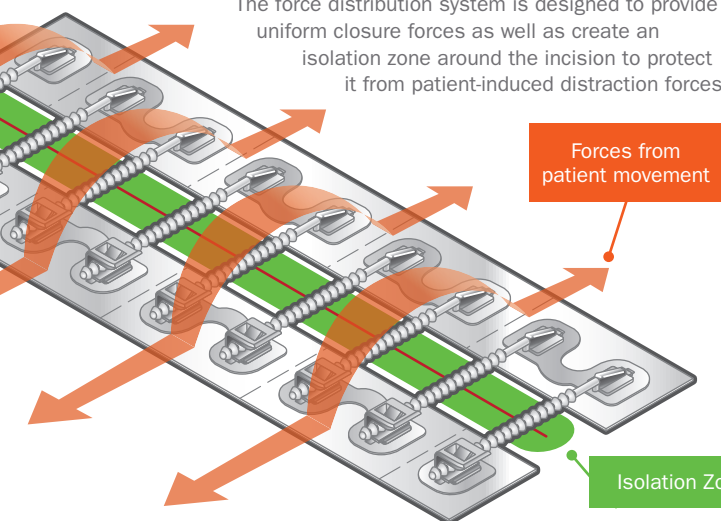
**3** Apply fenestrated cover



# PRELOC™ Technology

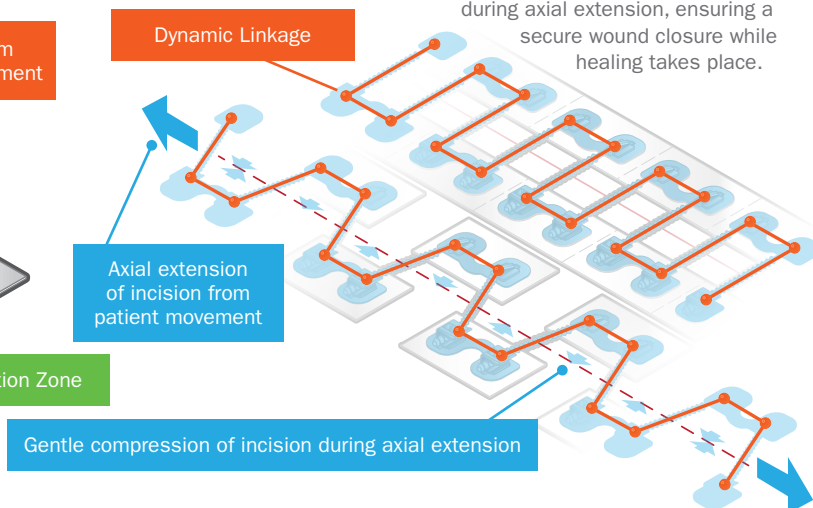
## Incision Isolation Zone

The force distribution system is designed to provide uniform closure forces as well as create an isolation zone around the incision to protect it from patient-induced distraction forces.



## Dynamic Compression

The integrated linkage in the Zip™ 8 is designed to provide dynamic compression during axial incision extension. Normal patient movement can sometimes cause the incision to extend along its length. The Zip™ 8 gently compresses the incision during axial extension, ensuring a secure wound closure while healing takes place.



## Pre-Clinical Results

Pre-clinical studies were conducted to evaluate device performance as compared to traditional closure techniques such as sutures. Devices were removed at two weeks post-op and resulting scars were evaluated at six weeks by a blinded panel of four board-certified plastic surgeons using the Cosmetic Visual Analog Scale (CVAS) and Wound Evaluation Scale (WES). Average results for two subjects are shown in the following table.

### Conclusion

Results suggest that cosmetic outcomes using ZipLine technology are at least equivalent to suture closure.

### Surgical Incision Closure

| Closure Mechanism   | WES Avg | CVAS Avg |
|---------------------|---------|----------|
| Suture control, n=4 | 5.58    | 84       |
| ZipLine, n=8        | 5.95    | 93       |

WES: 0 to 6, 6=best; CVAS: 0-100, 100=best.

| PRODUCT   | CATALOG NUMBER | PACKAGING                 |
|---|----------------|---------------------------|
| <b>Zip™ 8 - Surgical Skin Closure</b><br>For closure of incisions up to 8cm in length   | PS1080         | Box of 10 sterile devices |
| <b>Zip™ 15 - Surgical Skin Closure</b><br>For closure of incisions up to 15cm in length | PS1050         | Box of 10 sterile devices |

For more information or to schedule a demonstration, please contact:

**1-888-326-8999**  
[www.ziplinemedical.com](http://www.ziplinemedical.com)  
[customerservice@ziplinemedical.com](mailto:customerservice@ziplinemedical.com)

- 1 ZipLine devices are designed to provide cosmesis equivalent to sutures with closure speed comparable to skin staples. Cosmetic outcome is a function of many variables and individual results may vary.
- 2 Pepicello J, Yavorek H. Five year experience with tape closure of abdominal wounds. Surg Gynecol Obstet. 1989 Oct;169(4):310-4.
- 3 Data on file.
- 4 Shippert, RD. A Study of Time-Dependent Operating Room Fees and How to Save \$100,000 by Using Time-Saving Products. The American Journal of Cosmetic Surgery. 2005; 22(1):25- 34.
- 5 Stone PW, Larson E, Kavar LN. Systematic review of economic analyses of health care-associated infections. Am. J. Infect. Control. 2005; 33(9):501-509.
- 6 Leigh, J, et.al. Costs of needlestick injuries and subsequent hepatitis and HIV infection. Cur Med Res Opin. 2007 23(9):2093-2105.



**ZipLine Medical, Inc.**  
 747 Camden Ave. Suite A,  
 Campbell, CA 95008

**TEL** 1-888-326-8999  
**FAX** 1-888-265-0669  
**EMAIL** [customerservice@ziplinemedical.com](mailto:customerservice@ziplinemedical.com)

For USA only. Federal (USA) law restricts this device to use by or on the order of a physician.

ZipLine®, Zip™ and PRELOC™ are trademarks of ZipLine Medical, Inc. © 2013 ZipLine Medical, Inc. All rights reserved. US and International patents pending. The ZipLine devices are classified by the U.S. FDA as 'Class 1, Exempt'. The Company has confirmation of FDA determination of this classification on file. MA0009 Rev D