

AMENDMENT OF SOLICITATION/MODIFICATION OF CONTRACT			1. CONTRACT ID CODE		PAGE 1 OF 15 PAGES		
2. AMENDMENT/MODIFICATION NO. AMENDMENT NO. 0005		3. EFFECTIVE DATE 01/14/14		4. REQUISITION/PURCHASE REQ. NO.		5. PROJECT NO. (If applicable) 14-0035	
6. ISSUED BY Officer in Charge of Construction MCI-East 1005 Michael Road Camp Lejeune, NC 28547-2521		CODE N40085		7. ADMINISTERED BY (If other than Item 6) See Item 6		CODE	
8. NAME AND ADDRESS OF CONTRACTOR (No., street, county, State and ZIP Code)				(X)		9A. AMENDMENT OF SOLICITATION NO. N40085-14-R-0035	
				X		9B. DATED (SEE ITEM 11) 12/20/13	
						10A. MODIFICATION OF CONTRACT/ORDER NO.	
						10B. DATED (SEE ITEM 11)	
CODE		FACILITY CODE					

**11. THIS ITEM ONLY APPLIES TO AMENDMENTS OF SOLICITATIONS**

☒ The above numbered solicitation is amended as set forth in Item 14. The hour and date specified for receipt of Offers ☐ is extended, ☒ is not extended.

Offers must acknowledge receipt of this amendment prior to the hour and date specified in the solicitation or as amended, by one of the following methods:

(a) By completing items 8 and 15, and returning \_\_\_\_\_ copies of the amendment; (b) By acknowledging receipt of this amendment on each copy of the offer submitted; or (c) By separate letter or telegram which includes a reference to the solicitation and amendment numbers. FAILURE OF YOUR ACKNOWLEDGMENT TO BE RECEIVED AT THE PLACE DESIGNATED FOR THE RECEIPT OF OFFERS PRIOR TO THE HOUR AND DATE SPECIFIED MAY RESULT IN REJECTION OF YOUR OFFER. If by virtue of this amendment your desire to change an offer already submitted, such change may be made by telegram or letter, provided each telegram or letter makes reference to the solicitation and this amendment, and is received prior to the opening hour and date specified.

**12. ACCOUNTING AND APPROPRIATION DATA (If required)**

**13. THIS ITEM ONLY APPLIES TO MODIFICATION OF CONTRACTS/ORDERS.  
IT MODIFIES THE CONTRACT/ORDER NO. AS DESCRIBED IN ITEM 14.**

CHECK ONE	A. THIS CHANGE ORDER IS ISSUED PURSUANT TO: (Specify authority) THE CHANGES SET FORTH IN ITEM 14 ARE MADE IN THE CONTRACT ORDER NO. IN ITEM 10A.
	B. THE ABOVE NUMBERED CONTRACT/ORDER IS MODIFIED TO REFLECT THE ADMINISTRATIVE CHANGES (such as changes in paying office, appropriation date, etc.) SET FORTH IN ITEM 14, PURSUANT TO THE AUTHORITY OF FAR 43.103(b).
	C. THIS SUPPLEMENTAL AGREEMENT IS ENTERED INTO PURSUANT TO AUTHORITY OF:
	D. OTHER (Specify type of modification and authority)

**E. IMPORTANT:** Contractor ☐ is not, ☐ is required to sign this document and return \_\_\_\_\_ copies to the issuing office.

**14. DESCRIPTION OF AMENDMENT/MODIFICATION (Organized by UCF section headings, including solicitation/contract subject matter where feasible.)**

Project 14-0035 P-1450 SOF Fires Platoon Storage Facility

SEE CONTINUATION SHEET

Except as provided herein, all terms and conditions of the document referenced in Item 9A or 10A, as heretofore changed, remains unchanged and in full force and effect.

15A. NAME AND TITLE OF SIGNER (Type or print)		16A. NAME AND TITLE OF CONTRACTING OFFICER (Type or print)	
15B. CONTRACTOR/OFFEROR		16B. UNITED STATES OF AMERICA	
15C. DATE SIGNED		16C. DATE SIGNED	
(Signature of person authorized to sign)		(Signature of Contracting Officer)	

CONTINUATION SHEET

1. **Question:** Will the parking lot in front of building RR405 remain in operation throughout the project or will it be closed off and used as a laydown site?

**Answer:** The parking lot will be used as parking and cannot be used for laydown.

2. **Question:** Section 081400 wood doors para 2.3.5 finishes - there are three types of doors listed - field painted, factory finished and plastic laminate - which is correct?

**Answer:** Wood doors shall be Factory Finished per paragraph 2.3.5.2.

3. **Question:** Section 087100 door hardware - specified hardware sets do not list door numbers, the door schedule does not list hardware sets, can one or the other be shown with corresponding number. Hardware set #2 lists a card reader and states to provide as specified, where is the card reader specified?

**Answer:** See the following revised drawings for Door Hardware Schedule and Hardware Sets.

4. **Question:** Will the primary drain located on sheet CG 102 be enveloped with some sort of filter fabric? If so what are the specs on the geo-fabric?

**Answer:** Provide geotextile sleeve on underdrain piping as follows: Fiber: Knitted Polyester, Weight: 2.5 to 3.5 oz/sy, Mullen Burst: 100 psi, Apparent Opening Size (US Sieve) 30.

5. The project drawings and specifications are hereby revised as follows.

## CONTINUATION SHEET

The following drawings are revised as of 12/20/13 and accompany this amendment:

NAVFAC Drawing Nos. 12660951 - 12661016.

The following drawings shall be revised as indicated below:

### NAVFAC Dwg. No. 12660971 (S-201)


REPLACE Sheet S-201 with the attached Sheet S-201.

Removed Stone from underneath the slab on grade. Stone still remains under foundations.

### NAVFAC Dwg. No. 12660986 (A-601)

DOOR SCHEDULE:

REVISE All Hardware Sets as Follows:

DOOR SCHEDULE												NOTED THUS: 			
DOOR NUMBER	DOOR						FRAME					FIRE RESISTANCE (MINUTES)	HARDWARE SET	REMARKS	
	SIZE		MATERIAL	TYPE	PAIR(PR)	SINGLE(S)	GLAZING	MATERIAL	TYPE	DETAILS					
	WIDTH	HEIGHT								ALL DETAILS SEE SHEET A-601 EXCEPT WHERE NOTED OTHERWISE					
										HEAD	JAMB	SILL			
100A	3'-0"	7'-0"	HM	A	S	-		HM	F-2	D3	C2*	A4/A-303		1	*HINGE SIDE
											B2 OPP*				*LATCH SIDE
100B	3'-0"	7'-0"	HM	B	S	TGL		HM	F-1	D1	C1	D4/A-602	60	4	
100C	3'-0"	7'-0"	HM	B	S	TGL		HM	F-1	D1	C1	D4/A-602	60	4	
101	3'-0"	7'-0"	WSC	A	S	-		HM	F-1	D1	C1	-		4	
102	3'-0"	7'-0"	WSC	A	S	-		HM	F-1	D1	C1	-		4	
103	3'-0"	7'-0"	WSC	A	S	-		HM	F-1	D1	C1	-		4	
104	3'-0"	7'-0"	WSC	A	S	-		HM	F-1	D1	C1	-		4	
105	3'-0"	7'-0"	WSC	A	S	-		HM	F-1	D1	C1	-		4	
106A	3'-0"	7'-0"	HM	A	S	-		HM	F-1	D1	C1	B1	60	6	
106B	3'-0"	7'-0"	WSC	C	S	-		HM	F-1	D1	C1	-		5	
107A	3'-0"	7'-0"	HM	A	S	-		HM	F-1	D1	C1	D4/A-602	60	4	
107B	3'-0"	7'-0"	WSC	A	S	-		HM	F-1	D1	C1	-		4	
108	3'-0"	7'-0"	WSC	A	S	-		HM	F-1	D1	C1	-		4	
109	3'-0"	7'-0"	HM	A	S	-		HM	F-4	D3 SIM	B2	A4/A-303		3	
110A	3'-0"	7'-0"	HM	A	S	-		HM	F-2	D3	C2	A4/A-303		2	
110B	3'-0"	7'-0"	WSC	A	PR	-		HM	F-3	A1	A2	A4		7	1

**NAVFAC Dwg. No. 12660988 (AI101)**

FINISH SCHEDULE AND COLOR SCHEDULE:

DELETE F5: ALTERNATE BID RUBBER TILE.

**NAVFAC Dwg. No. 12660991 (F-001)**

REPLACE sheet F-001 with attached sheet F-001

Add 3 general notes.

Add three devices to fire alarm legend.

Move duct smoke detectors from “Fire Alarms” to “Supervisory Signals”.

**NAVFAC Dwg. No. 12660992 (F-101)**

REPLACE sheet F-101 with attached sheet F-101

Add 1 key work note that states “Existing exterior speaker tapping to be changed from 15 watts to 4 watts”.

Add control module, monitor module, and notification appliance circuit panel to existing sprinkler room.

Add key note “#5” to drawings.

Change exterior speaker tap from 2 watts to 1 watt.

**NAVFAC Dwg. No. 12660993 (F-201)**

REPLACE sheet F-201 with attached sheet F-201

Add “NAC Circuit – Speaker” to the Fire Alarm Layout.

Add control module, monitor module, and notification appliance circuit panel to the Fire Alarm Layout.

**NAVFAC Dwg. No. 12661009 (E-103)**

REPLACE Sheet E-103 with the attached Sheet E-103.

ADDED Telecom outlets (Classified & Unclassified) at gridlines 2A and 3A approx.

REVISED Note #14 to indicate Four 4” conduits from cable tray to Telecom room.

**NAVFAC Dwg. No. 12661013 (E-502)**

REPLACE Sheet E-502 with the attached Sheet E-502.

REVISED Unclassified and Classified Outlet detail to indicate 1 ¼" EMT conduit to cable tray.

The following Specifications are revised as of 12/20/13 and accompany this amendment:

**SECTION 00 22 13 – SUPPLEMENTAL INSTRUCTIONS TO BIDDERS**

INSERT Section 00 22 13 into the contract documents complete.

**SECTION 08 71 00 – DOOR HARDWARE**

DELETE paragraph 3.5 HARDWARE SETS in its entirety and REPLACE with the attached HARDWARE SETS.

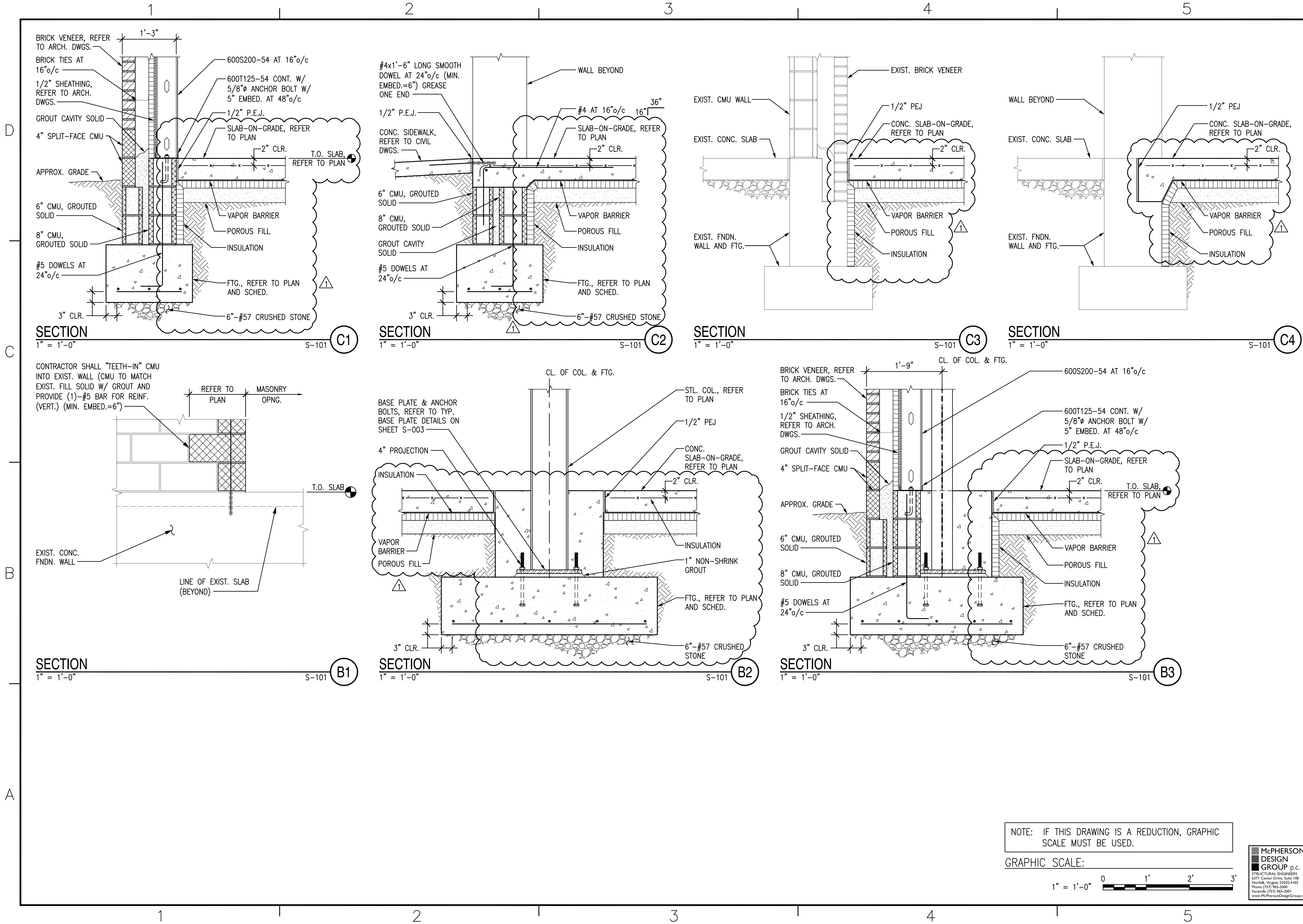
**SECTION 31 23 00.00 20 – EXCAVATION AND FILL**

ADD Paragraph 3.3.7 Contaminated Soils

If contamination of existing soils is suspected through visual or olfactory inspection, stop work immediately and notify the Contracting Officer as well as EMD/EQB at 910-451-5068.

ADD Paragraph 3.3.8 Monitoring Wells

If a groundwater monitoring well is inadvertently damaged. Stop work immediately and contact the Contracting Officer as well as EMD/EQB at 910-451-5068.



DATE	12.20.13	APPR.	
SYN	DESCRIPTION	ADDITION 1	

APPROVED

FOR COMMANDER NAVFAC

ACTIVITY

SATISFACTORY TO DATE

DES. TB. DRW. JDD. CHK. GMC

<<PM/DM>>

BRANCH MANAGER

CHIEF ENG/ARCH

<<OO>>

NAVAL FACILITIES ENGINEERING COMMAND

NAVAL FACILITIES ENGINEERING COMMAND

NAVAL STATION - NORFOLK, VIRGINIA

MCB CAMP LEJEUNE

JACKSONVILLE, NC

**Q-1450 SOF FIRES PLATOON STORAGE FACILITY**

SECTIONS & DETAILS

SCALE: GRAPHIC

PROJECT NO.: 1327677

CONSTR. CONTR. NO.

NAVFAC DRAWING NO. 12660971

SHEET 21 OF 66

**S-201**

DRAWING REVISION: 10 MARCH 2009

McPHERSON DESIGN GROUP P.C.

STRUCTURAL ENGINEERS

4371 Center Drive, Suite 100

Norfolk, Virginia 23502-4102

Phone (757) 965-2000

Fax (757) 965-3000

www.McPhersonDesignGroup.com

D

C







B

A

ACTION	ANNUNCIATION AT LOCAL PANELS			TRANSMIT SIGNALS TO FIRE DEPARTMENT			AUXILIARY FUNCTIONS	EVACUATION SIGNALS		
	AUDIO-VISUAL FIRE ALARM INDICATION BY DEVICE	AUDIO-VISUAL SUPERVISORY INDICATION BY DEVICE	AUDIO-VISUAL TROUBLE INDICATION BY DEVICE	COMMON ALARM SIGNAL PER BUILDING	COMMON SUPERVISORY SIGNAL PER BUILDING	COMMON TROUBLE SIGNAL PER BUILDING	SHUT DOWN ASSOCIATED AHU SUPPLY & RECIRC. FANS	FACILITY FIRE EVACUATION AUDIO-VISUAL SIGNAL	FACILITY ANNOUNCEMENT AUDIO-VISUAL SIGNAL	FACILITY ANNOUNCEMENT LIVE AUDIO-VISUAL SIGNAL
	A	B	C	D	E	F	G	H	I	J
FIRE ALARMS										
MANUAL FIRE ALARM STATIONS	X			X				X		
SPOT TYPE SMOKE DETECTORS	X			X				X		
HVAC EMERGENCY SHUT DOWN SWITCH	X			X				X		
FLOW SWITCHES	X			X				X		
MASS NOTIFICATION ALARMS										
LIVE VOICE ANNOUNCEMENT		X			X					X
ACTIVATION OF PRERECORDED ANNOUNCEMENT		X			X				X	
INCOMING MNS MESSAGE		X			X					X
SUPERVISORY SIGNALS										
DUCT SMOKE DETECTORS		X			X		X			
CONTROL VALVE TAMPER SWITCH		X			X					
TROUBLE CONDITIONS										
FIRE ALARM/MNS AC POWER FAILURE			X			X				
FIRE ALARM/MNS SYSTEM LOW BATTERY			X			X				
OPEN CIRCUIT			X			X				
GROUND FAULT			X			X				
NOTIFICATION APPLIANCE CIRCUIT SHORT			X			X				
NOTES:										
1. FIRE ALARM SIGNALS AND TROUBLE ALARM SIGNALS SHALL BE CLEARLY DIFFERENTIATED AT THE FIRE ALARM CONTROL PANEL(S).										
3. EMERGENCY MNS MESSAGES (LIVE & PRE-RECORDED) SHALL TEMPORARILY OVERRIDE FIRE ALARM AUDIBLE EVACUATION.										
4. PRE-RECORDED MNS MESSAGES SHALL REPEAT FOR 10 MINUTES OR UNTIL MANUALLY RESET.										






## FIRE ALARM MATRIX

SCALE: NA

	FIRE ALARM CONTROL PANEL (E INDICATED EXISTING)
	MASS NOTIFICATION PANEL (E INDICATES EXISTING)
	MANUAL PULL STATION
	CONTROL MODULE
	MONITOR MODULE
	NOTIFICATION APPLIANCE CIRCUIT PANEL

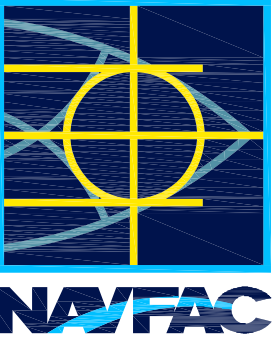


## FIRE ALARM LEGEND

SCALE: NA

	CEILING MOUNTED WEATHERPROOF STROBE (CLEAR LENS, XX INDICATES CANDELA)
	CEILING MOUNTED STROBE (CLEAR LENS, XX INDICATES CANDELA)
	CEILING MOUNTED SPEAKER/STROBE (CLEAR LENS, XX INDICATES CANDELA)
	WALL MOUNTED WEATHERPROOF SPEAKER, 1 WATTS
	DUCT SMOKE DETECTOR
OH-2	ORDINARY HAZARD GROUP 2
HC-1	HAZARD CLASSIFICATION 1
HC-2	HAZARD CLASSIFICATION 2

## GENERAL SHEET NOTES

- CONTRACTOR SHALL EXTEND THE EXISTING FIRE ALARM/MNS AND WET PIPE SPRINKLER SYSTEMS THROUGHOUT THE ADDITION TO BUILDING RR405 INCLUDING MANUAL PULL STATIONS, SPEAKER/STROBES FOR OCCUPANT NOTIFICATION, WIRING, CONDUIT AND ALL OTHER ASSOCIATED EQUIPMENT. ALL WORK AND INSTALLATION SHALL CONFORM WITH NFPA 70 (2011), NFPA 13 (2013), AND NFPA 72 (2013).
- RUN CONDUIT CONCEALED ABOVE CEILINGS UNLESS OTHERWISE NOTED.
- NO MODIFICATION OF STRUCTURAL MEMBERS IS PERMITTED UNLESS APPROVED BY THE CONTRACTING OFFICER OR STRUCTURAL ENGINEER.
- PROPERLY SEAL ALL PENETRATIONS TO MAINTAIN ENCLOSURE INTEGRITY & ANY RATED CONSTRUCTION.
- CONTRACTOR SHALL VERIFY ALL EXISTING CONDITIONS AND DIMENSIONS PRIOR TO BEGINNING OF WORK.
- PROVIDE ALL WIRING & CIRCUITS IN ELECTRICAL METALLIC TUBING OR CONDUIT (MINIMUM 3/4") & CONCEAL ABOVE THE CEILING.
- ALL WORK AND OUTAGES TO FIRE PROTECTION SYSTEMS SHALL BE IN ACCORDANCE WITH NFPA 241 STANDARD FOR SAFEGUARDING CONSTRUCTION, ALTERATION AND DEMOLITION OPERATIONS (2013).
- REFER TO THE MECHANICAL DRAWINGS FOR DUCT SMOKE DETECTOR LOCATIONS.
- ALL MATERIALS AND EQUIPMENT SHALL BE UL LISTED OR FM APPROVED FOR FIRE PROTECTION.
- ALL STROBE APPLIANCES REQUIRED TO BE SYNCHRONIZED PER NPFA 72.
- THE CONTRACTOR SHALL SUBMIT SHOP DRAWINGS AND SYSTEM CATALOG PRODUCT DATA SHEETS AS REQUIRED. SHOP DRAWINGS SHALL INCLUDE ALL COMPONENTS AND DETAILS REQUIRED BY THE APPLICABLE CODES AND STANDARDS.
- LOCATION AND QUANTITY OF APPLIANCES ARE FOR REFERENCES AND DO NOT CONSTITUTE EXACT LOCATIONS.
- TIE NEW FIRE ALARM/MASS NOTIFICATION APPLIANCES INTO THE EXISTING FIRE ALARM/MASS NOTIFICATION CONTROL PANEL.
- TIE NEW SPRINKLER SYSTEM INTO 3" MAIN LOCATED WITHIN THE EXISTING ADJACENT BAY.
- ALL TEMP OFFICES AND CUBICLE AREAS ARE TO BE HAZARD CATEGORY OH-2.
- ALL SPEAKERS ARE TO BE TAPPED AT A MINIMUM OF ¼ WATT UNLESS OTHERWISE STATED.
- REFER TO THE MECHANICAL DRAWINGS FOR THE LOCATIONS OF HVAC EMERGENCY SHUT DOWN SWITCHES.
- THE EXISTING AMPLIFIER IS 50-WATT WITH 11 SPARE WATTS PRIOR TO ANY MODIFICATIONS. THE AVAILABLE WATTAGE IS SUFFICIENT TO HOLD THE NEW SPEAKER & SPEAKER/STROBE APPLIANCES.
- PROVIDE NEW BATTERY CAPACITY FOR ALL NEW APPLIANCES.
- PROVIDE A REMOTE TEST STATION FOR THE DUCT SMOKE DETECTOR(S) NO MORE THAN 7' ABOVE THE FINISHED FLOOR. REFER TO THE MECHANICAL SHEETS FOR AIR HANDLER UNIT INFORMATION AND LOCATION.

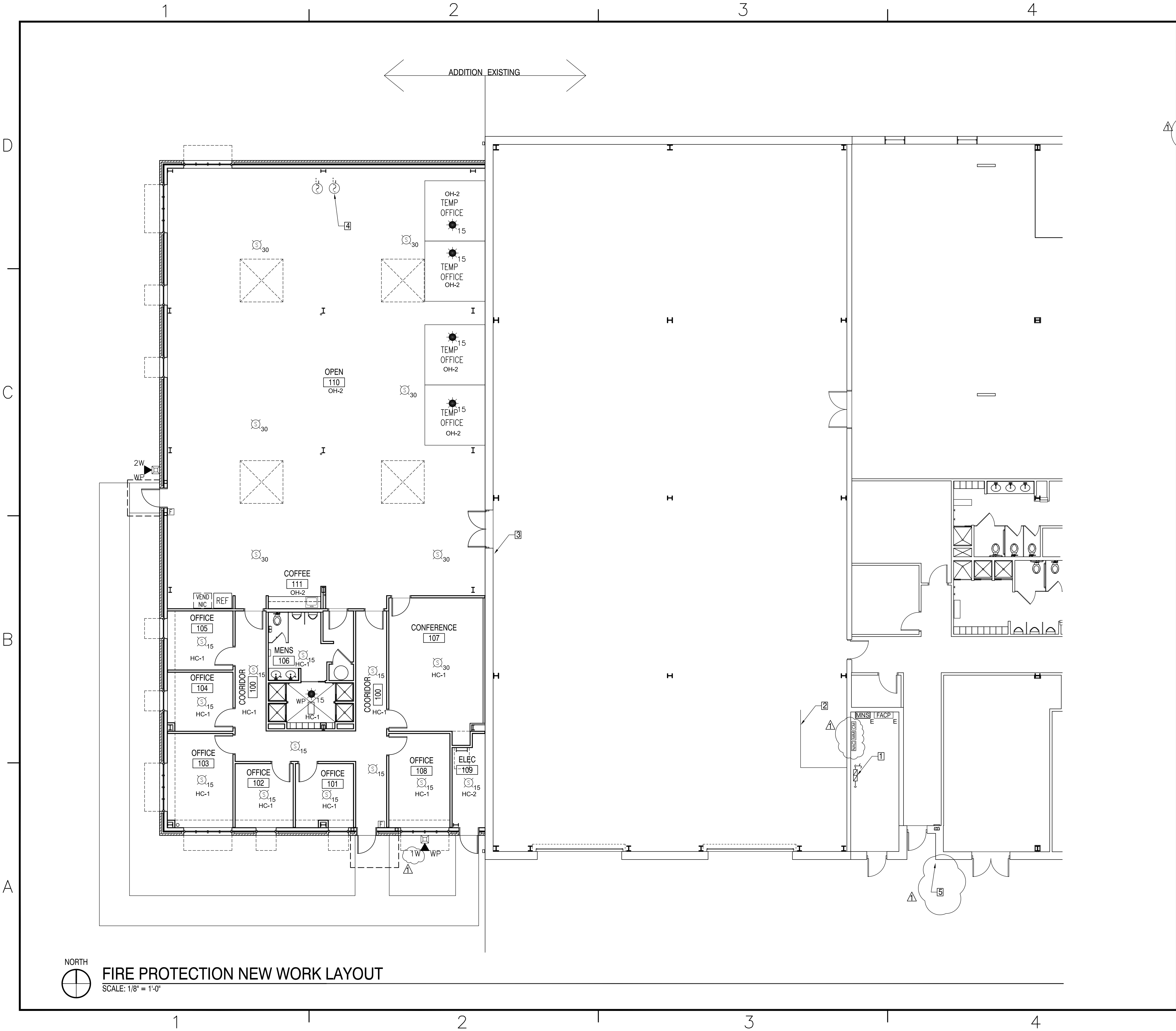
LSH						APPR
12.14						DATE
ADDENDUM 1						DESCRIPTION
A						SYN
						
						
						
APPROVED						
FOR COMMANDER NAVFAC						
ACTIVITY						
SATISFACTORY TO DATE						
DES	LSH	DRW	CDM	CHK	LSH	
PM	A. LABIDI					
BRANCH MANAGER	S. COOPER					
CHIEF ENG/ARCH	B. ABBOTT					
FIRE PROTECTION	E. ZDANKIEWICZ					
NAVAL FACILITIES ENGINEERING COMMAND						
NAVAL STATION - NORFOLK, VIRGINIA						
JACKSONVILLE, NC						
Q-1450 SOF FIRES PLATOON						
STORAGE FACILITY						
FIRE ALARM MATRIX & LEGEND						
SCALE: AS NOTED						
PROJECT NO.: 1327677						
CONSTR. CONTR. NO.						
NAVFAC DRAWING NO.						
12660991						
SHEET 41 OF 66						
F-001						
DRAWFORM REVISION: 10 MARCH 2009						

D

C



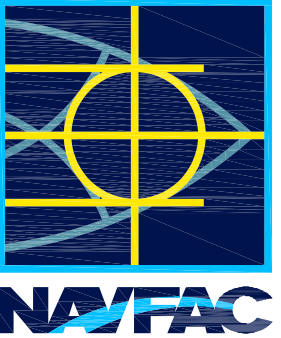
B

A



- | #  | KEY WORK NOTES  |
|----|---|
| 1. | EXISTING SPRINKLER RISER  |
| 2. | EXISTING 3" MAIN  |
| 3. | REMOVE EXISTING FIRE ALARM PULL STATION                             |
| 4. | DUCT DETECTOR LOCATIONS TO BE COORDINATED WITH MECHANICAL DRAWINGS. |
| 5. | CHANGE EXISTING EXTERIOR SPEAKER FROM 15 WATTS TO 4 WATTS.          |

LSH	DATE	APPR
12.14		
ADDITION 1		
A		



APPROVED	FOR COMMANDER NAVFAC	ACTIVITY
SATISFACTORY TO	DATE	
DES LSH	DRW A. LABIDI	CHK LSH
PM	BRANCH MANAGER S. COOPER	
	CHIEF ENG/ARCH B. ABBOTT	
	FIRE PROTECTION E. ZDANKIEWICZ	

DEPARTMENT OF THE NAVY  
NAVAL FACILITIES ENGINEERING COMMAND  
NAVAL STATION - NORFOLK, VIRGINIA

Q-1450 SOF FIRES PLATOON  
STORAGE FACILITY

NEW FIRE ALARM AND SPRINKLER LAYOUT

SCALE:	AS NOTED
PROJECT NO.:	1327677
CONSTR. CONTR. NO.	
NAVFAC DRAWING NO.	12660992
SHEET	42 OF 66
F-101	

DRAWFORM REVISION: 10 MARCH 2009

 **FIRE PROTECTION NEW WORK LAYOUT**  
SCALE: 1/8" = 1'-0"

NOTE: IF THIS DRAWING IS A REDUCTION, GRAPHIC SCALE MUST BE USED.

**GRAPHIC SCALE**









DOCUMENT 00 22 13

SUPPLEMENTARY INSTRUCTIONS TO BIDDERS  
05/11

PART 1 GENERAL

1.1 BID ITEM

The bid item shall be lump sum price for the following items:

0001. Price includes the following:

0001A. Price for the entire work, complete in accordance with the drawings and specifications, but excluding work described in Bid Item 0001B, and 0001C.

0001B. Unit Price for: Disposal of soils contaminated with Total Petroleum Hydrocarbons up to 50 mg/kg. Unit price shall include handling, all characterization testing required by the receiving facility, transportation, proper disposal at the permitted disposal facility and backfilling of the resulting excavation with properly compacted Select Material. The volume of material to be disposed of shall be determined by the field measurement of the width, length and depth of excavation. Prior to disposal, materials and calculated volumes shall be reviewed and approved by the Contracting Officer.

Provide unit price in accordance with the following schedule:

ITEM	UNIT	UNIT PRICE	NO. UNITS	EXTENSION
Removal and disposal of contaminated soils.	Cubic Yard	\$ _____	Base estimate on 50 CY	\$
Provision and compaction of fill in place of removed contaminated soil.	Cubic Yard	\$ _____	Base estimate on 50 CY	\$

0001C. Unit Price for undercutting unstable soil and backfilling with #57 stone, and compacting, in accordance with the drawings and specifications and in accordance with the following schedule:

ITEM	UNIT	UNIT PRICE	NO. UNITS	EXTENSION
Undercutting and replacement	Cubic Yard	\$ _____		\$

1.2 BID NOTES

- a. Award will be made on the total sum of Bid Item 0001A and the sum of the extensions under Bid Items 0001B, and 0001C. For Bid Items 0001B,

and 0001C, bidders shall enter unit prices and/or extended totals in spaces provided. If there is a difference between a unit price and the extended total, the unit price will be held to be the intended bid and the total recomputed accordingly. If a bidder provides a total but fails to enter a unit price, the total divided by the specified quantity will be held to be the intended unit price.

- c. The Government reserves the unilateral right to award the Option(s) to the contractor at the bid price within 60 calendar days after the contract award.d. Evaluation of Options (JUL 1990). Except when it is determined in accordance with FAR 17.206 (b) not to be in the Government's best interest, the Government will evaluate offers for award purposes by adding the price for the Option(s) to the total price for the Bid Item 0001. Evaluation of options will not obligate the Government to exercise the Option(s)

PART 2 PRODUCTS

Not used.

PART 3 EXECUTION

Not used.

-- End of Document --

**HARD-  
WARE SET DOOR AND HARDWARE DESCRIPTION**

**HW-1 EXTERIOR ENTRY/EXIT DOOR - SINGLE LEAF - OUTSWINGING**

1.5	Pr	Hinges	BHMA A5111 x 630 (NRP)
1	Ea.	Spin Dial Combo Lock	LKM7000-X09 (Active Leaf)
1	Ea.	Electromagnetic Lock	BHMA E08511 x 626 x Magnetic Bond Sensor (Active Leaf)
1	Pr	Mortise Flush Bolts	BHMA L54081 x 630
1	Ea	Overhead Closer(push side)	BHMA C02021 x 689 x PT 4G
1	Set	Weatherstripping	BHMA R0Y165
1	Ea	Threshold (acoustic protection)	BHMA J32130 x 673
1	Ea	Kick Plate (Int. side)	BHMA J102 x 630
1	Ea	Door Contact	Sentrol or equal
1	Ea	Power Supply	As Required
1	Ea	Card Reader	As Specified
1	Ea	Automatic Door Bottom	BHMA R0Y346
1	Ea	Alarm key pad	Bosch D1255
1	Ea	Passive IR Device (PIR)	Bosch DS938Z
1	Ea	Request to exit	General Electric RCR-REX-B
1	Ea	Emergency request to exit	As Required

**HW-2 EXTERIOR EXIT ONLY DOOR - SINGLE LEAF - OUTSWINGING**

1.5	Pr	Hinges	BHMA A5111 x 630
1	Ea	Mortise Exit Device	BHMA Type 6 x F01 x 630
1	Ea	Overhead Closer(push side)	BHMA C02021 x 689 x PT 4G
1	Set	Weatherstripping	BHMA R0Y165
1	Ea	Threshold	BHMA J36130 x 673
1	Ea	Bottom Rain Drip/Sweep	BHMA R0Y535
1	Ea	Door Contact	Sentrol 1078 or equal

**HW-3 EXTERIOR MECHANICAL ROOM DOOR - OUTSWINGING**

1-1/2	Pr	Hinges	BHMA A5111 x 630
1	Ea	Mortise Lockset	BHMA F07 x 630 (Storeroom)
1	Ea	Overhead Closer(push side)	BHMA C02021 x 689 x PT 4G
1	Set	Weatherstripping	BHMA R0Y165
1	Ea	Threshold	BHMA J36130 x 673
1	Ea	Bottom Rain Drip/Sweep	BHMA R0Y535
1	Ea	Kickplate	BHMA J102 x .050 x 630

**HW-4 INTERIOR OFFICE/CONF ROOM DOOR - SINGLE LEAF**

1.5	Pr	Hinges	BHMA A5111 x 630
1	Ea	Bored Lockset	BHMA F81 x 630 (Entry)
1	Ea	Wall Stop	BHMA L02101 x 626

**HW-5 WATER HEATER CLOSET - SINGLE LEAF**

1.5	Pr	Hinges	BHMA A5111 x 630
1	Ea	Bored Lockset	BHMA F86 x 630 (Entry)

1 Ea Wall Stop BHMA L02101 x 626

**HW-6 INTERIOR TOILET/SHOWER DOOR - SINGLE LEAF**

1.5 Pr Hinges BHMA A5111 x 630  
1 Ea Push/Pull Bar BHMA J505 x 630 x Bar Set  
1 Ea Overhead Closer (push side) BHMA C02021 x 689  
1 Ea Kickplate BHMA J102 x .050 x 630  
1 Ea Mop plate BHMA J103 x .050 x 630  
1 Ea Wall Stop BHMA L02101 x 626  
1 Ea Floor Holder BHMA L01381

**HW-7 INTERIOR ACCESS DOOR - DOUBLE LEAF**

3 Pr Hinges BHMA A5111 x 630  
2 Ea Push/Pull Bar BHMA J505 x 630 x Bar Set  
2 Ea Overhead Closer (pull side) BHMA C02051 x 689  
2 Ea Wall Stop BHMA L02101 x 626  
4 Ea Kickplate BHMA J102 x .050 x 630

-- End of Section --