



Meeting of the Regional Transport Committee

Date: Friday 15 February 2013
Time: 10.15 am
Venue: Council Chamber
Hawke's Bay Regional Council
159 Dalton Street
NAPIER

Agenda

ITEM	SUBJECT	PAGE
1.	Welcome/Notices/Apologies	
2.	Conflict of Interest Declarations	
3.	Short Term Replacements for the Regional Transport Committee	3
4.	Confirmation of Minutes of the Regional Transport Committee held on 14 December 2012	
5.	Matters Arising from Minutes of the Regional Transport Committee held on 14 December 2012	
6.	Action Items from Previous Regional Transport Committee Meetings	5
7.	Consideration of General Business Items	
Information or Performance Monitoring		
8.	Napier to Gisborne Rail Line - Update	9
9.	Public Transport Update	11
10.	The Year Ahead for the Regional Transport Committee	15
11.	Transport Manager's Report	17
12.	NZTA Central Region - Regional Director's Report	23
13.	Verbal Reports from Objective Representatives	
14.	General Business	33

HAWKE'S BAY REGIONAL COUNCIL
REGIONAL TRANSPORT COMMITTEE

Friday 15 February 2013

**SUBJECT: SHORT TERM REPLACEMENTS FOR THE REGIONAL TRANSPORT
COMMITTEE**

INTRODUCTION

1. Council has made allowance in the terms of reference of the Committee for short term replacements to be appointed to the Committee where the usual member/s cannot stand.

RECOMMENDATION

1. That _____ be appointed as member/s of the Regional Transport Committee of the Hawke's Bay Regional Council for the meeting of Friday, 15 February 2013 as short term replacements(s) on the Committee for _____.



**Carol Gilbertson
TRANSPORT MANAGER**

HAWKE'S BAY REGIONAL COUNCIL
REGIONAL TRANSPORT COMMITTEE

Friday 15 February 2013

**SUBJECT: ACTION ITEMS FROM PREVIOUS REGIONAL TRANSPORT
COMMITTEE MEETINGS**

INTRODUCTION

1. **Attachment 1** is a list of items raised at previous Regional Transport Committee meetings that require action or follow-up. All action items indicate who is responsible for each action, when it is expected to be completed and a brief status comment. Once the items have been completed and reported to the Committee they will be removed from the list.

DECISION MAKING PROCESS

2. Council is required to make a decision in accordance with Part 6 Sub-Part 1, of the Local Government Act 2002 (the Act). Staff have assessed the requirements contained within this section of the Act in relation to this item and have concluded that as this report is for information only and no decision is required in terms of the Local Government Act's provisions, the decision making procedures set out in the Act do not apply.

RECOMMENDATION

1. That the Regional Transport Committee receives the report "*Action Items from Previous Regional Transport Committee Meetings*".



**Carol Gilbertson
TRANSPORT MANAGER**

Attachment/s

- 1 Action Items

Actions from Regional Transport Committee Meetings

The following is a list of items raised at the Regional Transport Committee meetings that require actions or follow-ups. All action items indicate who is responsible for each action, when it is expected to be completed and a brief status comment for each action. Once the items have been completed and reported back to the Committee they will be removed from the list.

14 December 2012 Meeting

Agenda Item	Action	Person Responsible	Due Date	Status Comment
State Highway 38 – Request for Sealing	To be left on the list for regular follow-ups		ongoing	
Ford Rd extension, Whakatu and Pakowhai Links Rd	To be left on the list for regular follow-ups	NZTA	Ongoing	Update on all top RLTP projects included as a regular item on agenda.
Regional Land Transport Programme	Running tally of “R” funds spent/available In NZTA Report	NZTA	Ongoing	Information to be provided by NZTA at the RTC Meeting.
Regional (R) funds	Letter to TLA’s requesting their support for R funds Letter to Taranaki Regional Council confirming RTC agreement on TRC approach	CG	Feb	Letter to TAs sent. Letter to TRC sent confirming Hawke’s Bay RTC support.
Driver licensing in rural areas of HB	Letter to be sent to Snr Sgnt Tony Bates in Wairoa supporting his endeavours to retain some form of driver licensing in rural areas of Hawke’s Bay.	CG	Feb	Letter sent from RTC Chairman.
Car pooling	TAG to discuss funding requests via Annual Plan Process	CG	March	To be discussed at March TAG meeting.

Attachment 1

Gisborne to Napier Rail Line	Letter to Mr Quinn and Minsters thanking him for delaying the removal of infrastructure for mothballing process	CG	Feb	Letter sent.
------------------------------	---	----	-----	--------------

Item 6

**HAWKE'S BAY REGIONAL COUNCIL
REGIONAL TRANSPORT COMMITTEE**

Friday 15 February 2013

SUBJECT: NAPIER TO GISBORNE RAIL LINE - UPDATE

Reason for Report

1. This item is provided as an opportunity to update the Committee on the Gisborne to Napier rail line.

Background

2. The report produced by Berl was made public in early January 2013 and made available to the Committee.
3. No confirmation of a meeting date has been received for the Region's Mayors and Chair to meet with Minister Gerry Brownlee and Minister Stephen Joyce.
4. If any further information is available it will be provided to members at the meeting.

Decision Making Process

5. Council is required to make a decision in accordance with Part 6 Sub-Part 1, of the Local Government Act 2002 (the Act). Staff have assessed the requirements contained within this section of the Act in relation to this item and have concluded that, as this report is for information only and no decision is to be made, the decision making provisions of the Local Government Act 2002 do not apply.

Recommendation

1. That the Gisborne to Napier rail line be discussed at the meeting.



**Carol Gilbertson
TRANSPORT MANAGER**

Attachment/s

There are no attachments for this report.

**HAWKE'S BAY REGIONAL COUNCIL
REGIONAL TRANSPORT COMMITTEE**

Friday 15 February 2013

SUBJECT: PUBLIC TRANSPORT UPDATE

Reason for Report

1. This agenda item provides the Committee with an update on Council's public transport services, including trends since the previous update in October 2012. The report contains patronage graphs which are updated each month and provided to this Committee and the Corporate and Strategic Committee.

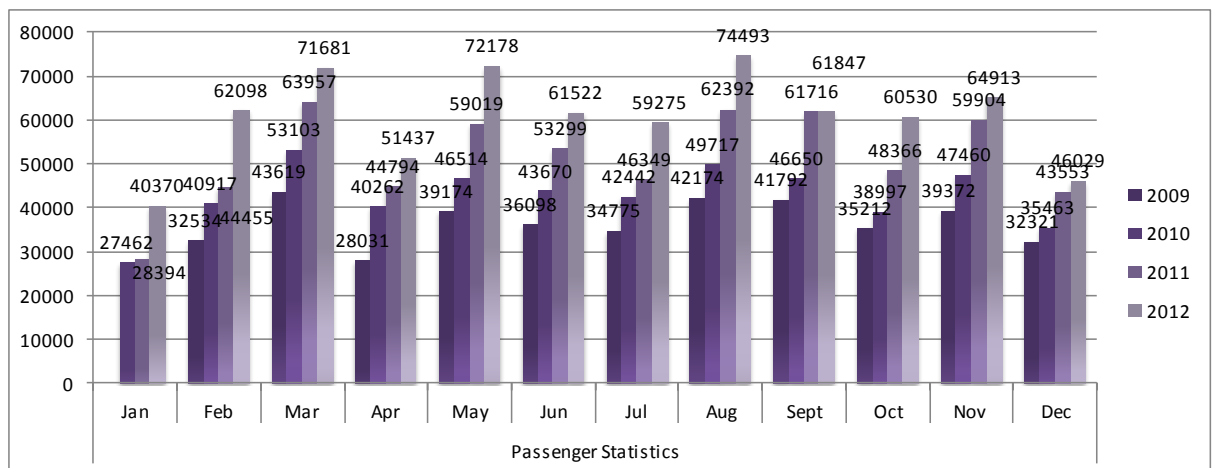
General Information

2. The overall performance of the bus service continues to be positive, with good passenger growth and farebox recovery levels. Total passenger trips reached another record high of 726,373 in 2012. This was an increase of 18% on 2011.

1. Total Passenger Trips

3. The following graph shows total passenger trips from February 2009 to December 2012:

2. **Diagram 1 – Total Passenger Trips – February 2009 – December 2012**



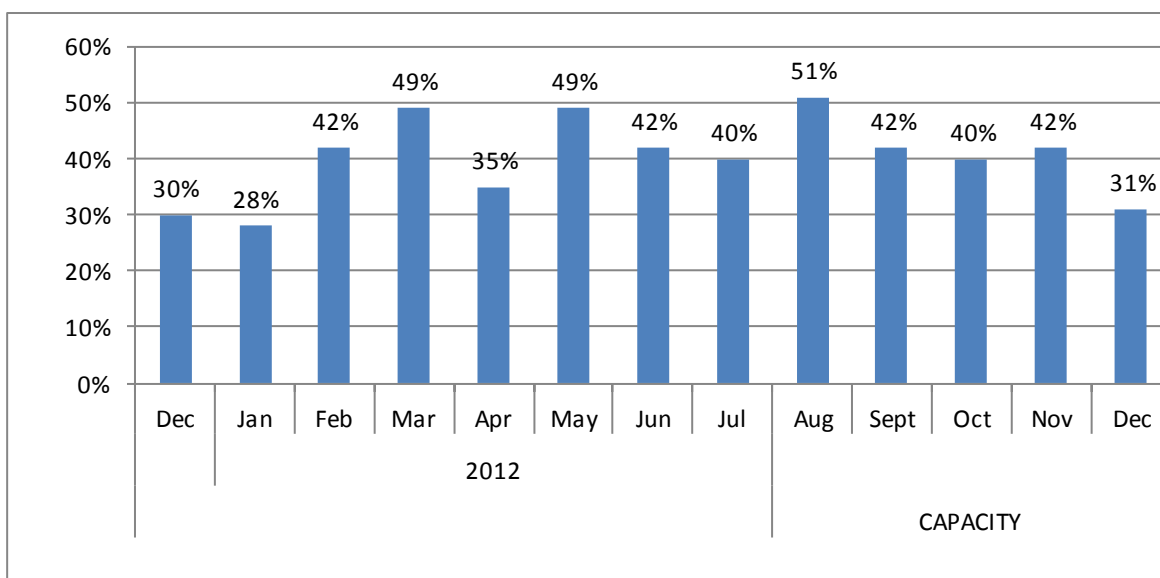
- 3.
4. Since 2009 the total numbers of trips per year and monthly averages have steadily trended upwards, as follows.

4.		Total Yearly Trips	Monthly Average
5.	2009	434,231	36,186
6.	2010	512,657	42,721
7.	2011	616,198	51,350
	2012	726,373	60,531

Capacity

5. This graph shows the seat capacity utilised on a monthly basis from December 2011 to December 2012. The average utilised capacity for 2012 was 41%.

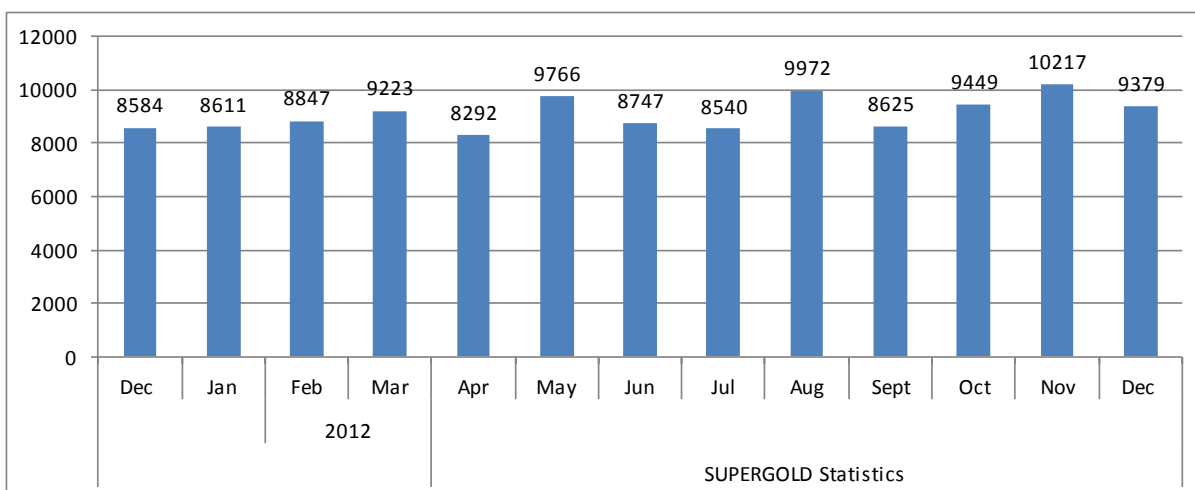
Diagram 2 – Capacity – December 2011 – December 2012



SuperGold Card Trips

- The following graph shows the number of SuperGold cardholder trips made from December 2011 to December 2012. SuperGold cardholders continue to make very good use of this scheme.

Diagram 3 – SuperGold Card Trips – December 2011 – December 2012



Improvements to Bus Services

- Services continue to be well patronised, with the whole public transport operation running smoothly and efficiently.
- The Route 15 (Ahuriri/Westshore), the changes to Route 17 (to travel past the Summerset Retirement Village) on Ada Street, and improvements to other services continue to prove popular with passengers.

8. Infrastructure

Bus Stops

- The bus stop signage project is to begin in early 2013, with a trial of the signage at 32 bus stops in Flaxmere. If no issues are raised during the trial the proposed signage will be rolled out to all Hastings bus stops and, initially, those bus stops in Napier with an existing bus stop pole.

Bikes on Buses

- The uptake of bikes on buses has exceeded expectations. Since the installation of the bike racks on the front of most of the buses in the fleet, 250 bikes have been carried.

Other

11. The annual passenger survey was carried out in November/December 2012, the results are currently being analysed and due to be presented to Go Bus in mid February, all indications are that passengers are very happy with the service, with some very good feedback and comments received.
12. The following is a brief snapshot of achievements and improvements to the bus services during 2012:
 - 12.1. Route 12 frequencies doubled
 - 12.2. Sunday services on Route 12 introduced
 - 12.3. Public Holiday services introduced
 - 12.4. Route 15 (Hopper) made permanent
 - 12.5. Route 17 extended to run via Summerset Retirement Village, Ada Street, Hastings
 - 12.6. Express services rebranded
 - 12.7. Bike park/shelter installed in Havelock North Village
 - 12.8. Bike racks installed on most of the fleet
 - 12.9. Two new bus shelters installed on Gloucester Street, Taradale
 - 12.10. Several new on-street timetable units installed
 - 12.11. QR code introduced to timetable booklets and on-street posters
 - 12.12. Mobile timetable access for smart phones introduced

Total Mobility Update

13. Below is a table showing details of Total Mobility client numbers and expenditure from January to December 2012.

Diagram 4 – Total Mobility Statistics – January – December 2012

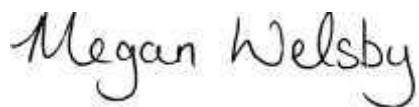
Month	Amount	Trips	Passengers	Wheelchair Passengers	New Clients	Total Clients	Av. Fare Subsidy Per Trip
Jan-12	\$ 36,719.03	5,589	6,240	1,094	38	2,460	\$ 7.56
Feb-12	\$ 41,056.46	5,963	6,666	1,491	50	2,480	\$ 7.92
Mar-12	\$ 43,700.14	6,405	7,193	1,607	56	2,540	\$ 7.85
Apr-12	\$ 44,329.40	6,637	7,385	1,359	42	2,575	\$ 7.68
May-12	\$ 46,373.61	6,704	7,646	1,587	56	2,625	\$ 7.95
Jun-12	\$ 43,068.78	6,181	7,010	1,330	40	2,640	\$ 8.01
Jul-12	\$ 44,451.00	6,753	7,609	1,631	47	2,650	\$ 7.57
Aug-12	\$ 44,876.96	6,839	7,660	1,654	40	2,670	\$ 7.55
Sep-12	\$ 43,240.52	6,471	7,292	1,679	52	2,715	\$ 7.68
Oct-12	\$ 46,216.78	7,256	7,735	1,591	45	2,730	\$ 7.32
Nov-12	\$ 45,382.85	6,925	7,776	1,734	46	2,742	\$ 7.54
Dec-12	\$ 39,880.57	6,447	7,202	1,403	13	2,750	\$ 7.11
TOTAL	\$ 519,296.10	78,170	87,414	18,160	525		

Decision Making Process

14. Council is required to make a decision in accordance with Part 6 Sub-Part 1, of the Local Government Act 2002 (the Act). Staff have assessed the requirements contained within this section of the Act in relation to this item and have concluded that, as this report is for information only and no decision is to be made, the decision making provisions of the Local Government Act 2002 do not apply.

Recommendation

1. That the Regional Transport Committee receives the Public Transport Update.



**Megan Welsby
SUSTAINABLE TRANSPORT
COORDINATOR**



**Carol Gilbertson
TRANSPORT MANAGER**

Attachment/s

There are no attachments for this report.

HAWKE'S BAY REGIONAL COUNCIL
REGIONAL TRANSPORT COMMITTEE

Friday 15 February 2013

Item 10

SUBJECT: THE YEAR AHEAD FOR THE REGIONAL TRANSPORT COMMITTEE

Reason for Report

1. The purpose of this report is to provide the Regional Transport Committee (RTC) with an indication of topics to be discussed at RTC meetings held in 2013.

Background

2. In 2012 the RTC adopted its Regional Land Transport Strategy and Regional Land Transport Programme. This year the RTC needs to focus on key elements contained in the RLTS and monitor the RLTP.
3. Therefore the following topics will be key discussion areas for the Committee, these are:

3.1. Freight

- 3.1.1. Freight was identified as a key challenge / issue in the RLTS. Freight can be carried by a number of modes – air; sea; road and rail and needs to consider the links with other regions outside Hawke's Bay.
- 3.1.2. As the first step to understanding Freight in Hawke's Bay the Committee will visit the Port of Napier to get a better understanding of their vision for the future for freight and coastal shipping.
- 3.1.3. The New Zealand Transport Agency has commissioned a Central Region Freight Study and officers are attending a workshop on the findings of this study in February.

3.2. Safety

- 3.2.1. In conjunction with the NZ Police and RoadSafe the committee will focus on safety outcomes, expectations and risks in Hawke's Bay.

3.3. Legislative Changes

- 3.3.1. The Government has proposed some significant changes to the legislative environment that the RTC operates under, the Land Transport Management Act (LTMA). In addition to the LTMA, changes to the Local Government Act (LGA) represent a challenge for the region going forward.

3.4. Other Major Projects

- 3.4.1. The Water Storage Project in Central Hawke's Bay is a major project that the Hawke's Bay Regional Council is progressing. Both TAG and the RTC need to be kept updated with progress on this project and in particular what the roading impact, if any, may be.

- 3.5. These topics will be scheduled into the agenda for the RTC as appropriate.

Decision Making Process

4. Council is required to make a decision in accordance with Part 6 Sub-Part 1, of the Local Government Act 2002 (the Act). Staff have assessed the requirements contained within this section of the Act in relation to this item and have concluded that, as this report is for information only and no decision is to be made, the decision making provisions of the Local Government Act 2002 do not apply.

Recommendation

1. That the Regional Transport Committee receives the report and notes the four key topics to be discussed in 2013.



**Carol Gilbertson
TRANSPORT MANAGER**

Attachment/s

There are no attachments for this report.

HAWKE'S BAY REGIONAL COUNCIL
REGIONAL TRANSPORT COMMITTEE

Friday 15 February 2013

Item 11

SUBJECT: TRANSPORT MANAGER'S REPORT

Reason for Report

1. This regular report provides the Committee with a snapshot of relevant transport matters; comments on issues that have been actioned since the last Regional Transport Committee (RTC); updates from the Transport Advisory Group (TAG) on issues raised at their regular meetings; and outlines what is coming up within the transport sector.

Current Issues

2. Update from Transport Advisory Group (TAG) Meeting
 - 2.1. One TAG meeting has been held since the last RTC meeting. The main items discussed at this meeting are highlighted below:
 - 2.1.1. Updates from other Transport Advisory groups attended by TAG members.
 - 2.1.2. TAG Workload for 2013 – focus on monitoring and measuring agreed targets in the Regional Land Transport Strategy; and future meetings to align with RTC priorities - Freight (including road, rail, sea and air); safety (wider view to include police and communities); Legislation changes; presentation on CHB Water Storage Project (impacts to roading).
 - 2.1.3. It was agreed that quarterly meetings were appropriate for this year, therefore meetings will be held in March, May, August and November to align with the RTC meetings.
3. Public Transport
 - 3.1. The second round of industry consultation will be held in February with the current and potential bus operators to report back on initial feedback on the draft Transport Procurement Strategy and content of the tender documents for the urban bus contract, which expires in February 2014. The final Transport Procurement Strategy will be presented to the Regional Council at the end of February for adoption. Council is on target to release the tender documents in April 2013.

Reporting on Priority Projects in the Regional Land Transport Programme

4. The RTC have asked for a regular progress / status report on the key improvement projects in the Regional Land Transport Programme, as shown in Attachment 1. The updates will be high level status reports from the Approved Organisations (AO's) and give the RTC a brief overview of current progress. The RTC will note that not all projects in the RLTP are shown, only the key improvement projects with the highest priority in the RLTP and those that contribute to the key aims of the Regional Land Transport Strategy.

Approved Organisations – Significant Issues and Update

5. Hastings District Council
 - 5.1. No significant issues to report.
6. Napier City Council
 - 6.1. Marine Parade Closure

Tennyson Street Stormwater Project - Council is in the final stages of planning for the installation of the Tennyson Street Stormwater pipe and beach outfall expected to commence construction around mid-April 2013.

The size and depth of this proposed pipe will require the closure of Marine Parade for a significant time and because of this we have already given the industry an early “heads up” so that people can start thinking of what alternative arrangements can be made particularly for truck movements to and from the Port of Napier.

The project involves installing a 2m diameter Stormwater pipe from the intersection of Hastings Street and Tennyson Street, up Tennyson Street and on to a beach outfall. While final details are still being considered the expected closure of Marine Parade is likely to commence from late April / Early May for around 2 months.

Detours will be available for light traffic through the city centre, these will not be suitable for large heavy vehicles however, and we are requesting all Trucks, particularly those bound for the Port of Napier, to divert via State Highway 2 (Georges Drive) or earlier and around the hill. Obviously for truck operators approaching from the South, using the Expressway / Prebensen Drive is preferred.

7. Wairoa District Council

7.1. Rationalisation of current Term Maintenance Contract procurement arrangements is under review by Wairoa District Council. WDC is looking to maintain a sustainable contractor supplier market while aligning with the national Maintenance Taskforce Review recommendations. Through improved activity focus our term contracts aim to maintain the roads in the most cost effect manner for our remote rural district.

7.2. Flood damage restoration works are well underway with five (5) contracts currently in progress. Coastal flood damage restoration repairs are slower to progress with extensive Resource Consent application work ongoing to advance these to construction phase.

8. Central Hawke’s Bay District Council

8.1. All emergency work is being tendered and constructed; regular programmed work has been scaled back to accommodate emergency works and there will be carry-over funding at the end of this fiscal term in both maintenance and renewals.

Regional Cycling Plan

9. Work has recommenced on the Regional Cycling Plan [Strategy] for Hawke’s Bay. A workshop will be held with key stakeholders, including Territorial Authorities, in the next couple of months, to seek input into the Plan.

Looking Ahead

10. Guidelines for implementation of the proposed Land Transport Management Act Amendment Bill are being discussed by all Regional Transport Officers at their February meeting, including the implications of the Public Transport Operating Model (PTOM); and impacts of any changes in the Funding Assistant Rates (FAR).

11. Focus continues on the completion of the contract documents for the urban bus contract and finalising the Transport procurement strategy.

Decision Making Process

12. Council is required to make a decision in accordance with Part 6 Sub-Part 1, of the Local Government Act 2002 (the Act). Staff have assessed the requirements contained within this section of the Act in relation to this item and have concluded that, as this report is for information only and no decision is to be made, the decision making provisions of the Local Government Act 2002 do not apply.

Recommendations

That the Regional Transport Committee receive the Transport Manager’s report.



Carol Gilbertson
TRANSPORT MANAGER

Attachment/s

- 1 Update on RLTP Projects

Prioritised Activities for 2012-15 – RTC Update – February 2013

RTC Priority	Organisation	Project name and description	NLTP Decision	Funding source	Indicative NLTP Funding Allocation	Status Update
1	HDC	Whakatu Arterial Link 2012/15.	<i>Probable</i>	R	2,865,000	<p>Primary produce drives the economic well being of Hawke's Bay and it is important that the sector is supported by strong transport links between the major production and distribution points. Whakatu has become the economic hub for wet industry in Hawke's Bay and Hastings District Council is focussed on providing an efficient transport infrastructure that maximises the economic opportunities which are available for the whole region. Council's Whakatu Arterial Link project will provide a strategic roading link between Havelock North, State Highway 2 north, Pakowhai Road, the Expressway and the Port of Napier. This new link will not only support economic growth and increased productivity from the land, it will also improve safety and performance of the wider transport network.</p> <p>The RTC identified this project as the highest priority project in the region. An Enquiry by Design process with the community participation was undertaken in January-June 2012 period to identify a suitable corridor for the arterial link. The Council adopted the single corridor option presented by the Enquiry by Design Group in August 2012. Design and Assessment of Environmental Effects phase is currently underway. It is expected to be completed by July 2013.</p>
2	NZTA	HB Expressway Pakowhai & Links Rd Intersection	<i>Probable</i>	R	6,483,000	Investigation Phase initiated.
3	NZTA	SH2 Napier Road Intersection - proposed 3 legged roundabout as standalone project; 4 legged with Whakatu outlet	<i>Probable</i>	R	3,743,000	Subject to outcome of HDC Whakatu Arterial investigation.
4	NCC	Extension to Ford Rd to connect to existing Prebensen Dr / Severn St roundabout - including extension of off road cycle/pedestrian network	<i>Probable</i>	R	3,571,441	Ready to proceed.
5	NCC	Four laning of Prebensen Drive between HB Expressway and Hyderabad Road	<i>Reserve</i>	R	6,400,000	Currently below funding line.
6	NZTA	Prebensen Drive / Hyderabad Rd Intersection Upgrade	<i>Reserve</i>	R	2,295,000	Currently below funding line.
7	NZTA	HB Expressway Kennedy Rd to Meeanee Rd - wire rope barrier to improve safety and capacity of this section of expressway (possible 4 laning)	<i>Reserve</i>	R	162,000	Currently below funding line.
9	NZTA	Seismic Retrofit - treatment of various seismic retrofit and seismic linkage sites to ensure the delivery of a secure integrated network	<i>Probable</i>	R	1,500,000	NZTA: No works programmed for this region.

RTC Priority	Organisation	Project name and description	NLTP Decision	Funding source	Indicative NLTP Funding Allocation	Status Update
13	NZTA	Improved Driver Information - to optimise the network by managing the movement of people and freight	<i>Probable</i>	<i>R</i>	<i>876,800</i>	Awaiting confirmation of national programme.
14	NZTA	Safety Retrofit - corridor type initiatives focussed on higher risk corridors	<i>Probable</i>	<i>R</i>	<i>2,212,023</i>	NZTA: Programme under development.
15	NZTA	SH2/SH50A Paki Paki Junction	<i>Not Included</i>		<i>0</i>	Currently below funding line.
16	NZTA	Te Mahanga Sth - Passing Lane	<i>Now N funded</i>			Programmed for practical completion April 2013.
21	NZTA	Property Acquisition Block and Fees - Hawke's Bay	<i>Probable</i>	<i>R</i>	<i>2,812,500</i>	NZTA: No draw down to date.

**HAWKE'S BAY REGIONAL COUNCIL
REGIONAL TRANSPORT COMMITTEE**

Friday 15 February 2013

Item 12

SUBJECT: NZTA CENTRAL REGION - REGIONAL DIRECTOR'S REPORT

Reason For Report

1. This item introduces the NZTA Central Region Regional Director's report as provided in **Attachment 1**.

DECISION MAKING PROCESS

2. Council is required to make a decision in accordance with Part 6 Sub-Part 1, of the Local Government Act 2002 (the Act). Staff have assessed the requirements contained within this section of the Act in relation to this item and have concluded that, as this report is for information only and no decision is to be made, the decision making provisions of the Local Government Act 2002 do not apply.

RECOMMENDATION

1. That the Regional Transport Committee receives the Regional Director's report.



**Carol Gilbertson
TRANSPORT MANAGER**

Attachment/s

- 1 Regional Director's Report

Regional Report



NZ TRANSPORT AGENCY
WAKA KOTAHU

Report to:	Hawke's Bay Regional Transport Committee
Presenter:	Jenny Chenwynd, Regional Director
Date:	15 February 2013

The purpose of this report is to provide an update on NZTA's role in the delivery of the Regional Land Transport Strategy and the National Land Transport Programme in the Hawke's Bay Region and to provide an update on key initiatives that may affect the strategic development of the regional transport network or the users of that network.

1. National Transport Operating Environment

New Zealand's economic recovery remains patchy, and forecasts suggesting that economic growth would slow in the latter half of last year, were confirmed by Consumer Price Index (CPI) which fell 0.2% in the December quarter. The unemployment rate also continues to hover around 7 per cent. The key question is whether this slowdown is a temporary setback or the beginning of a longer-term trend.

However, while the economy remains flat, business and consumer confidence has moved into positive territory. Unfortunately, the outlook for the global economy is still clouded by the debt crisis in Europe, and continuing concerns about how the United States will manage its debt ceiling.

Looking forward, the Christchurch re-build is expected to have a positive effect on the whole economy, with the caveat that it may also mean that the construction industry can pass on higher input prices to the NZTA and local authorities. But provided that inflation remains under control, we expect the economy to have a flat but upward growth trajectory during 2013.

2. Delivering the National Land Transport Programme

2.1. Funding approvals

Activity description	Organisation	Approved	Amount
Emergency Re-instatement	Wairoa District Council Special Purpose Road	16 Oct 2012	\$597,650
Minor Improvements	Hastings District Council	11 Dec 2012	\$1,384,650

2.2. Managing our State Highway Network

2.2.1. Maintenance and Operations	
Road maintenance including pavement repairs, surfacing repairs, drainage, other structures, barrier maintenance, vegetation control, winter maintenance, environmental maintenance, traffic services and cycle-ways maintenance as per local authority agreements.	Contractors are managing work requirements as expected. Seasonal hot weather has resulted in active management of sticky road surfacings (flushing) with no significant damage to State Highways. SH5. Mohaka Bridge has experienced asphalt failure. This is being proactively managed with a speed restriction for the safety of motorists. A replacement surfacing is being designed and engineers are working

NZTA Regional Report - Pg 1
Hawke's Bay

	<p>to ensure no additional weight will affect our ability to move heavier loads/HPMV's across the bridge. This has not affected the bridge capacity.</p> <p>SH50. The dropout at Clarkson's Hill has been programmed for repair this summer season and based on progress is scheduled to be addressed around mid Feb.</p>
Emergency Reinstatement	Reinstatement works have been tendered and construction to be completed before the end of the financial year.

2.2.2 Maintenance Renewals	
Maintenance Chip Sealing (MCS)	Programme being delivered as required and progressing well.
Pavement Rehabilitation	Work is being delivered as required and progressing well.
Consultation of Renewal programme	Completed for this financial year.

2.3. Road Maintenance Taskforce / Roading Efficiency Group

Central Hawke's Bay District is in discussions with the Tararua District Council regarding collaboration on physical works contracts that cross the boundary between the two districts. Both are taking reports to their respective Councils, to be able to further the initiatives.

2.4. FAR Review

The Funding Assistance Rate (FAR) determines the proportion of costs that our investment partners will receive from the National Land Transport Fund. As noted in our previous report, the NZTA is reviewing the approach used in setting FARs and we encourage all parties to take an interest in this process.

We are on track to provide some options for future FAR arrangements for your consideration in March 2013.

Further information on the review, including the timeline, scope and a background document, can be found online at <http://www.nzta.govt.nz/planning/investment/far-review.html>.

2.5. State Highway Capital Project Summary

Please refer to Appendix I.

Regional Report



NZ TRANSPORT AGENCY
WAKA KOTAHI

3. Improving Customer Service and Reducing Compliance Costs

3.1. Vehicle Licensing Reform Consultation

At various times in the last year I have reported to you on the Vehicle Licensing Reform project. The aim of the project is to save New Zealanders both time and money by simplifying the vehicle licence system whilst supporting the Government's commitment to road safety.

You will have seen the consultation material produced by NZ Transport Agency and Ministry of Transport and publicity about the views of various interested groups on the proposed changes.

The project looked at the;

- Warrant of Fitness (WoF) and Certificate of Fitness (CoF) systems
- Annual Vehicle licensing system (registration)
- Transport services licensing system

The Associate Minister of Transport the Hon Simon Bridges, announced the results of the review in late January. A number of changes to the WoF and CoF are proposed and further investigations into the Transport services and annual vehicle licensing were called for.

The changes will simply and clarify these systems for users.

A detailed list of the results of the review and implementation schedule is attached as Appendix 2.

4. Improving the Efficiency of Freight Movements

4.1. HPMV Progress.

Work progressing on determining priority local authority roads for assessment as feeders to approved HPMV routes.

4.2. HB Expressway Pakowhai & Links Rd Intersection

Professional services contracts have been awarded and we are working towards delivering a refined project cost by July 2014. The exact location of the proposed at grade roundabout is yet to be confirmed and will depend on the extent and cost of environmental mitigations which vary depending on the proximity of any infrastructure to adjacent properties.

4.3. SH2 Napier to Gisborne Passing Opportunities

Last November NZTA completed the design review of all potential passing opportunities, these range in their development from concept to detailed design. Some of the high risk sites have both land purchase and geotechnical issues outstanding.

Based on this review the rough order average cost for the construction of a single passing opportunity is \$425,000. This does not include contingencies and other costs such as land purchase.

NZTA is targeting the delivery of eight passing opportunities over the 2013/14 and 2014/15 construction seasons.

Our procurement strategy is to package the work into approximately four contracts and then tender each contract consecutively. Our engagement with industry supports this philosophy.

4.4. Poukawa Swamp Sth Passing Lane

This project is now open allowing road users are enjoying the benefits

4.5. Te Mahanga Sth -Passing Lane

This project is due to be opened to road users in April

4.6. Central New Zealand Freight Story

As noted in our December report, the NZTA (as part of its priority to improve the efficiency of supply chain and freight movements) is holding a series of regional workshops to report back on results of our freight survey, and provide an opportunity for the freight sector to discuss the "freight story" in Central New Zealand. The Napier workshop will be held on 20th February.

5. Improving the Road Safety System

5.1. Making our network safer

5.1.1. Schedule of network safety activities	
Minor Safety	All progressing well with the exception of the 'Queue Ahead' sign on expressway. Delay due to back-order of hardware. Expected delivery April.
Speed changes	All changes have been submitted for approval before end 2012. Expected completion mid Feb.
Other initiatives	The Himatangi Rural Intersection Activated Warning Signs (RIAWS) on SH1 seem to have resulted in a significant reduction in traffic speed. For Hawke's Bay, Longlands and Railway Road Intersections have been identified as trial locations for later this year.
Treatments	Nil.

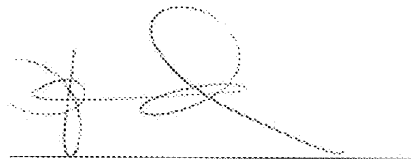
6. Improving the Effectiveness of Public Transport

6.1. Public Transport

There are significant changes being worked through in Public Transport (PT) at the moment to make it more efficient. NZTA has been working closely with Hawke's Bay to better understand how some of the impending legislative changes to the public transport environment will affect the re-tendering of the Hawke's Bay services due in 2014.

Key topics on the agenda for discussion between the NZTA PT team and Hawke's Bay Regional Council are: the inclusion of the principles of PTOM into a Procurement Strategy, the tender for next year's bus service contract, variations to the RUB and monitoring/data collection. It is expected that these discussions will continue into the New Year.

Approved:



Jenny Chetwynd, Regional Director

Date:

/02/2013

Appendix 1: State Highways Capital Works Projects 2012/2015

Project name	Phase	Funding Status	Comment
Tarawera Hill Realignment and PL's	I	Committed	R Scoping phase practically complete
09-12 Roading - VDM Projects - Hawke's Bay & Gisborne	I	Committed	N Complete
09-12 Roading - Bay View to SH2/SH5 Intersection Seal Widening	I	Committed	R Complete
09-12 Roading - Corkscrew Gully Northbound Passing Lane	D	Committed	NR Practically Complete
09-12 Roading - Corkscrew Gully Southbound Passing lane	D	Committed	R Practically Complete
09-12 Roading - College Road to Silverstream Realignment & P	D	Committed	R Subject to land purchase
09-12 Roading - SH2 Napier to Gisborne Passing Opportunities	D	Committed	R Design review complete. Construction 13/14
Waipukurau Overbridge Realignment	C	Committed	N Complete
HB Expressway Southern Extension	C	Committed	R Second coat seal required to complete, programmed 2012/13
Matahorua Gorge Realignment	C	Committed	NR Second coat seal required to complete, programmed 2012/13
09-12 Roading - Te Mahanga Nth Passing Lane	C	Committed	N Second coat seal required to complete, programmed 2012/13
09-12 Roading - SH2 South of SH50 Passing Lane	C	Committed	R Second coat seal required to complete, programmed 2012/13
09-12 Roading - Poukawa Swamp 5th Passing Lane	C	Committed	N Programmed for completion early late 2012
HB Expressway Pakowhai & Links Rd Intersection	I	Probable	R Investigation Phase initiated
HB Expressway Pakowhai & Links Rd Intersection	D	Probable	R Project in investigation phase - future phase
HB Expressway Pakowhai & Links Rd Intersection	P	Probable	R Project in investigation phase - future phase
HB Expressway Pakowhai & Links Rd Intersection	C	Probable	R Project in investigation phase - future phase
SH2 Napier Road Intersection	C	Probable	R Subject to outcome of HDC Whakatu Arterial Investigation

NZTA Regional Report - Pg 5
Hawke's Bay

Attachment 1

Item 12

Improved Driver Information - Hawke's Bay	C	Probable	R	Awaiting confirmation of national programme
Property Acquisition Block and Fees - Hawke's Bay	C	Probable	R	No draw down to date
Te Mahanga Sth - Passing Lane	C	Probable	N	Programmed for completion 2012/13
Seismic Retrofit - Hawke's Bay	C	Probable	R	Programme under development
Safety Retrofit - Hawke's Bay	C	Probable	R	Programme under development
HB Expressway Kennedy Rd to Meeanee Rd	I	Reserve	R	Below funding line
Wairoa SEDF (North of Napier SEDF)	I	Reserve	R	Completed 2009/12
Wairoa SEDF (North of Napier SEDF)	D	Reserve	R	Below funding line
Prebensen Drive / Hyderabad Rd Intersection Upgrade	C	Reserve	R	Below funding line

* D=Design, I=Investigation, C=Construction, P=Property

Appendix 1: Vehicle Licensing Review

Key changes

The Vehicle Licensing Reform was a review of:

- the warrant of fitness and certificate of fitness systems
- the annual vehicle licensing (commonly known as registration) system
- the transport services licensing system.

The aim is to save New Zealanders both time and money, while supporting the government's commitment to road safety.

Warrant of Fitness system (WoF):

- After initial inspection for new cars, no further inspection will be needed until vehicles are three years old.
- Annual inspections for vehicles three years and older and first registered on or after 1 January 2000
- Six-monthly inspections for vehicles first registered before 1 January 2000
- Information and education to increase people's awareness of regular vehicle maintenance
- Extra Police enforcement activities.

Certificate of Fitness:

- Six monthly default for inspections remains
- Frequency of inspections can be varied between three and twelve months
- Vehicle owners and operators will have greater choice about where and from whom they get their vehicles inspected.

Transport Services Licences

The NZTA will report by 30 September 2013 on ways to streamline and refocus the system towards operators who present a greater risk to road users. This includes reporting on:

- The implications of removing farmers and trades people who only use one goods vehicle of less than 15,000kg gross vehicle mass, from having a transport services licence
- Ways to improve the process for entry to transport services licensing
- Opportunities to better manage and exit unsafe and poor performing operators from transport services licensing
- Whether the fees and charges for the regulatory activities should change to reflect the activities carried out for different sectors.

Annual Vehicle Licensing

The NZTA will report by 30 September 2013 on ways to:

- Make it easier for motorists to pay on time by improving communication
- Encourage on-time payment through the use of payment incentives such as late payment penalties

- * Use different infringements to better differentiate between those who are late to pay and those who are evading payment

Indicative timetable

System	Action	Indicative Date
Warrant of fitness (WoF)	Consultation on amendment to Rule WoF Changes implemented	April/May 2013 1 July 2014 or earlier
Annual Vehicle Licensing	Report back to government on specific changes to Annual Vehicle Licensing	30 September 2013
Transport Services Licensing	Conversation with industry about proposed changes	Before 30 September 2012
	Report back to government on changes to Transport Services Licensing	30 September 2013

For more information visit www.transport.govt.nz

**HAWKE'S BAY REGIONAL COUNCIL
REGIONAL TRANSPORT COMMITTEE**

Friday 15 February 2013

Item 14

SUBJECT: GENERAL BUSINESS

INTRODUCTION

This document has been prepared to assist Committee members note the General Business to be discussed as determined earlier in Agenda Item 7.

ITEM	TOPIC	COUNCILLOR / STAFF
1.		
2.		
3.		
4.		
5.		
6.		
7.		
8.		
9.		
10.		