

ProPEX® EP Swivel Closet Adapter

Submittal Information
Revision A: Feb. 5, 2008

Project Information

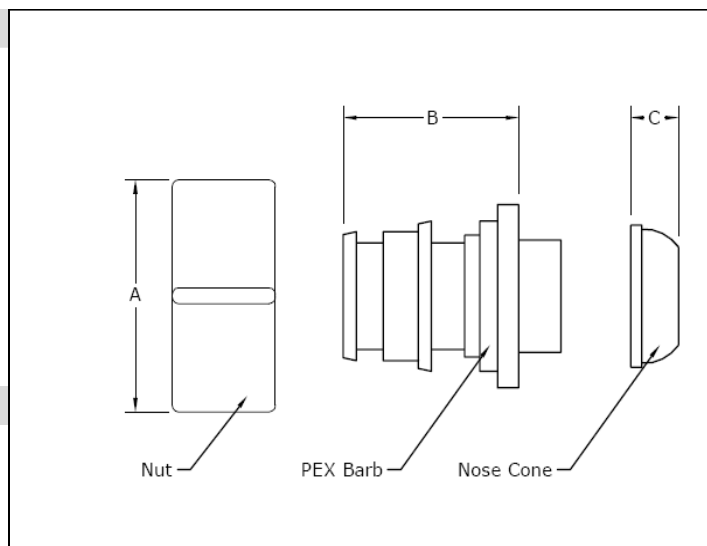
Job Name:	
Location:	Part No. Ordered:
Engineer:	Date Submitted:
Contractor:	Submitted By:
Manufacturer's Representative:	Approved By:

Technical Data

Nut:	Plastic
PEX Barb:	UDEL Polysulfone, 20% glass-reinforced
Nose Cone:	EPDM
Maximum Working Temperature/Pressure:	210°F (99°C) at 150 psi
Maximum Temperature (no pressure):	320°F (160°C)

Product Information and Application Use

The ProPEX® EP Swivel Closet Adapters are available for use in hot and cold domestic potable water systems.¹ One end is manufactured with the Uponor ProPEX® Fitting for swivel connections to Wirsbo AQUAPEX® tubing.



✓ Description	Part Number	A	B	C	Nut	Weight
<input type="checkbox"/> ProPEX EP Swivel Closet Adapter, 3/8" PEX x 7/8" Ballcock	Q4340375	1.13"	0.93"	0.43"	15/16"-14 NS-1	0.01 lbs.
<input type="checkbox"/> ProPEX EP Swivel Closet Adapter, 1/2" PEX x 7/8" Ballcock	Q4340500	1.13"	1.05"	0.43"	15/16"-14 NS-1	0.02 lbs.

Installation

A ProPEX Ring is required to make a ProPEX connection. Use the appropriate size Uponor ProPEX Ring for tubing connections. For more information, refer to the AQUAPEX Professional Plumbing Installation Handbook or the Uponor Radiant Floor Installation Handbook.

Standards

CAN/CSA B137.5; ASTM F877; ASTM F1960

Codes

IPC; UPC; NSPC; NPC of Canada

Listings

HUD MR 1269; ICC ESR 1099; ANSI/NSF 14- and 61-certified; IAPMO 3558

Related Applications

PEX-a Plumbing Systems

Contact Information

Uponor, Inc.
5925 148th Street West
Apple Valley, MN 55124 USA
Phone: (800) 321-4739
Fax: (952) 891-2008
www.uponor-usa.com

Uponor Ltd.
655 Park Street
Regina, SK S4N 5N1 CANADA
Phone: (888) 994-7726
Fax: (800) 638-9517
www.uponor.ca

¹ProPEX® is a registered trademark of Uponor, Inc. ProPEX™ is a trademark of Uponor Ltd.