

# TABLE OF CONTENTS - ESTIMATED QUANTITIES SHEET

## CHAPTER 3

| FILE NO. | TITLE | DATE |
|----------|-------|------|
|----------|-------|------|

### TABLE OF CONTENTS AND INTRODUCTION

|          |                                     |           |
|----------|-------------------------------------|-----------|
| 03.TOC-1 | Table of Contents – Chapter 3 ..... | 30Apr2020 |
| 03.TOC-2 | Table of Contents – Chapter 3 ..... | 30Apr2020 |
| 03.TOC-3 | Table of Contents – Chapter 3 ..... | 27Jul2017 |
| 03.00    | Introduction – Chapter 3.....       | 31Oct2019 |

### ESTIMATED QUANTITIES SHEET – SAMPLE SHEETS AND CHECK LIST

|           |  |           |
|-----------|--|-----------|
| * 03.01-1 | Sample Sheet for Standard Single “B” Number .....                | 27Jul2017 |
| * 03.01-2 | Sample Sheet for Dual Bridges with Individual “B” Numbers.....   | 17Aug2016 |
| * 03.01-3 | Sample Sheet for Single ‘B” Number and Dual Lane Direction ..... | 17Aug2016 |
| * 03.01-4 | Sample Sheet for General Notes Shown .....                       | 27Jul2017 |
| 03.01-5   | Check List.....  | 17Aug2016 |
| 03.01-6   | Check List.....  | 27Jul2017 |
| 03.01-7   | Notes .....  | 31Oct2019 |

### PROJECT BLOCK

|       |                          |           |
|-------|--------------------------|-----------|
| 03.02 | General Information..... | 14Jun2010 |
|-------|--------------------------|-----------|

### TITLE BLOCK

|       |                          |           |
|-------|--------------------------|-----------|
| 03.03 | General Information..... | 14Jun2010 |
|-------|--------------------------|-----------|

|       |                          |  |
|-------|--------------------------|--|
| 03.04 | Intentionally left blank |  |
|-------|--------------------------|--|

### BID ITEMS - INSTRUCTIONS

|         |                                |           |
|---------|--------------------------------|-----------|
| 03.05-1 | Bid Items – Instructions ..... | 27Jul2017 |
| 03.05-2 | Bid Items – Instructions ..... | 17Aug2016 |
| 03.05-3 | Bid Items – Instructions ..... | 31Oct2019 |

\* Indicates 11 x 17 sheet; all others are 8½ x 11.

# TABLE OF CONTENTS - ESTIMATED QUANTITIES SHEET

## CHAPTER 3

| FILE NO.  | TITLE  | DATE      |
|---|--|-----------|
| <b>BID ITEMS – BRIDGE SUPERSTRUCTURE</b>                          |  |           |
| 03.06-1   | Bid Items – Bridge Superstructure .....                          | 31Oct2019 |
| 03.06-2   | Bid Items – Bridge Superstructure .....                          | 31Oct2019 |
| 03.06-3   | Bid Items – Bridge Superstructure .....                          | 17Aug2016 |
| 03.06-4   | Bid Items – Bridge Superstructure .....                          | 17Aug2016 |
| 03.06-5   | Bid Items – Bridge Superstructure .....                          | 17Aug2016 |
| 03.06-6   | Bid Items – Bridge Superstructure .....                          | 17Aug2016 |
| 03.06-7   | Bid Items – Bridge Superstructure .....                          | 31Oct2019 |
| 03.06-8   | Bid Items – Bridge Superstructure .....                          | 27Jul2017 |
| 03.06-9   | Bid Items – Bridge Superstructure .....                          | 31Oct2019 |
| <b>BID ITEMS – BRIDGE SUBSTRUCTURE</b>                            |  |           |
| 03.07-1   | Bid Items – Bridge Substructure .....                            | 31Oct2019 |
| 03.07-2   | Bid Items – Bridge Substructure .....                            | 30Apr2020 |
| 03.07-3   | Bid Items – Bridge Substructure .....                            | 08Aug2018 |
| 03.07-4   | Bid Items – Bridge Substructure .....                            | 08Aug2018 |
| <b>BID ITEMS – BRIDGE INCIDENTALS</b>                             |  |           |
| 03.08   | Bid Items – Bridge Incidentals.....                              | 31Oct2019 |
| <b>BID ITEMS – STRUCTURAL WIDENING OR REPAIR - SUPERSTRUCTURE</b> |  |           |
| 03.09-1   | Bid Items – Structural Widening or Repair – Superstructure ..... | 17Aug2016 |
| 03.09-2   | Bid Items – Structural Widening or Repair – Superstructure ..... | 17Aug2016 |
| 03.09-3   | Bid Items – Structural Widening or Repair – Superstructure ..... | 31Oct2019 |
| 03.09-4   | Bid Items – Structural Widening or Repair – Superstructure ..... | 31Oct2019 |
| 03.09-5   | Bid Items – Structural Widening or Repair – Superstructure ..... | 31Oct2019 |
| 03.09-6   | Bid Items – Structural Widening or Repair – Superstructure ..... | 31Oct2019 |
| 03.09-7   | Bid Items – Structural Widening or Repair – Superstructure ..... | 17Aug2016 |
| 03.09-8   | Bid Items – Structural Widening or Repair – Superstructure ..... | 31Oct2019 |
| <b>BID ITEMS – STRUCTURAL WIDENING OR REPAIR - SUBSTRUCTURE</b>   |  |           |
| 03.10-1   | Bid Items – Structural Widening or Repair – Substructure .....   | 27Jul2017 |
| 03.10-2   | Bid Items – Structural Widening or Repair – Substructure .....   | 30Jan2018 |
| 03.10-3   | Bid Items – Structural Widening or Repair – Substructure .....   | 27Jul2017 |
| 03.10-4   | Bid Items – Structural Widening or Repair – Substructure .....   | 17Aug2016 |
| 03.10-5   | Bid Items – Structural Widening or Repair – Substructure .....   | 31Oct2019 |

\* Indicates 11 x 17 sheet; all others are 8½ x 11.

### ESTIMATED QUANTITIES SHEET TABLE OF CONTENTS - CHAPTER 3

PART 2  
DATE: 30Apr2020  
SHEET 2 of 3  
FILE NO. 03.TOC-2

# TABLE OF CONTENTS - ESTIMATED QUANTITIES SHEET

## CHAPTER 3

| FILE NO.  | TITLE  | DATE      |
|---|--|-----------|
| <b>BID ITEMS – REQUIRED ON ALL PROJECTS; OCCASIONAL USE</b> |  |           |
| 03.11-1   | Bid Items – Required on All Projects; Occasional Use ..... | 17Aug2016 |
| 03.11-2   | Bid Items – Required on All Projects; Occasional Use ..... | 17Aug2016 |
| <b>GENERIC NON-STANDARD ITEMS IN TRNS·PORT</b>              |  |           |
| 03.12-1   | Bridge Superstructure .....                                | 17Aug2016 |
| 03.12-2   | Bridge Substructure.....                                   | 27Jul2017 |
| 03.12-3   | Bridge Incidentals .....                                   | 17Aug2016 |
| 03.12-4   | Structural Widening or Repair – Superstructure .....       | 17Aug2016 |
| 03.12-5   | Structural Widening or Repair – Superstructure .....       | 17Aug2016 |
| 03.12-6   | Structural Widening or Repair – Substructure .....         | 27Jul2017 |
| <b>TABLE OF ESTIMATED QUANTITIES – REVISIONS</b>            |  |           |
| 03.13   | Table of Estimated Quantities – Revisions .....            | 01Feb2005 |

\* Indicates 11 x 17 sheet; all others are 8½ x 11.

## GENERAL PROCEDURES

Chapter 3 of this manual establishes the practices for the completion of sheet 2 for a plan assembly and contains all of the items needed to complete this sheet.

For a typical project, the sheet following the front sheet includes the Estimated Quantities table, the Index of Sheets and the Table of Revisions. No other details shall be shown on this sheet. For major projects or long structures, however, the title sheet may be extended to additional sheets to adequately show the appropriate details. For such cases, what is referred to as sheet 2 would actually be the first sheet following these additional sheets.

The sheet is an interior sheet with the cell name **SHT** and may be found in the *bdetails1.cel* library. It is recommended that this sheet be generated by using the *bsht* program from the **VDOT BRIDGE MDL** task bar, see File No. 01.03-1. This ensures that the cell is placed at the proper location in the file and facilitates the entering of information in the project block and title block.

The following cells in the *bdetails1.cel* library are utilized on sheet 2: **INDEX** (Index of Sheets) **RVTAB** (Table of Revisions) and **ESTQ1**, **ESTQ2** and **ESTQ3** (Table of Estimated Quantities).

The details noted for general drafting procedures in Chapter 1 shall be adhered to.

**NOTE:**

Due to various restrictions on placing files in this manual onto the Internet, portions of the drawings shown do not necessarily reflect the correct line weights, line types, fonts, arrowheads, etc. Wherever discrepancies occur, the written text shall take precedence over any of the drawn views.

10

### ESTIMATED QUANTITIES - SUBSTRUCTURE ONLY

|            |         | Concrete Class A3<br>CY | Reinforcing Steel<br>LB | Corrosion Resistant Reinf. Steel, Class I<br>LB | Prestressed Concrete Piles 12" |               | Prestressed Concrete Piles 24" |               | Struct. Excav.<br>CY | Concrete Parapet<br>LF | Concrete Slab Slope Protec. 4"<br>SY | Select Backfill (Abutment Zone)<br>TON | Dry Riprap Class II 38"<br>TON |
|------------|---------|-------------------------|-------------------------|---|--------------------------------|---------------|--------------------------------|---------------|----------------------|------------------------|--------------------------------------|--|--------------------------------|
|            |         |                         |                         |   | LF                             |               | LF                             |               |                      |                        |                                      |  |                                |
|            |         |                         |                         |   | Alternative 1                  | Alternative 2 | Alternative 1                  | Alternative 2 |                      |                        |                                      |  |                                |
| Abutment A | Neat    | 42.2                    | 3,690                   |   |                                |               |                                |               | 20                   |                        |                                      |  |                                |
|            | Footing | 68.2                    | 4,540                   |   | 462                            | 462           |                                |               | 105                  | 375                    | 170                                  |  |                                |
| Pier 1     | Neat    | 61.2                    |                         | 28,400  |                                |               |                                |               |                      |                        |                                      |  |                                |
|            | Footing | 73.4                    | 6,270                   |   | 101                            | 101           |                                |               | 115                  |                        |                                      |  |                                |
| Pier 2     | Neat    | 62.4                    | 28,980                  |   |                                |               |                                |               |                      |                        |                                      |  |                                |
|            | Footing | 73.4                    | 6,270                   |   | 110                            | 110           |                                |               | 118                  |                        |                                      |  |                                |
| Bent 3     |         | 33.0                    | 4,550                   |   |                                |               | 303                            | 303           |                      |                        |                                      |  |                                |
| Bent 4     |         | 33.0                    | 4,550                   |   |                                |               | 176                            | 176           |                      |                        |                                      |  |                                |
| Abutment B | Neat    | 46.0                    | 4,540                   |   |                                |               |                                |               | 30                   |                        |                                      |  |                                |
|            | Footing | 66.4                    | 4,310                   |   | 450                            | 450           |                                |               | 105                  |                        | 180                                  | 220                                    |                                |
| Total      |         | 559.2                   | 67,700                  | 28,400  | 1,123                          | 1,123         | 479                            | 479           | 443                  | 50                     | 375                                  | 350                                    | 220                            |

Alternate 1 - with Stainless Steel Strands (BPP-2)  
 Alternate 2 - with Carbon Fiber Reinforced Polymer (CFRP) Strands (BPP-3)  
 ⊗ Denotes items to be paid for on the basis of plan quantities in accordance with current Road and Bridge Specifications.

13

### INDEX OF SHEETS

| Sheet No. | Description   |
|-----------|---|
| 1         | Title sheet; Plan, profile, design exceptions and general notes |
| 2         | Estimated quantities and index of sheets                        |
| 3         | Substructure layout and slope protection                        |
| 4         | Abutments A and B plan and elevations                           |
| 5         | Abutments A and B details                                       |
| 6         | Piers 1 and 2   |
| 7         | Bents 3 and 4   |
| 8         | Bearing details   |
| 9         | Transverse section  |
| 10        | Framing plan and beam elevation                                 |
| 11        | Dead load deflection diagram and camber diagram                 |
| 12        | Deck slab plan  |
| 13        | Superstructure details and deck elevations                      |
| 14        | Adhesive based joint sealer details                             |
| 15        | Cast-in-place concrete parapet (F-Shape)                        |
| 16        | Bridge drainage details   |
| 17        | Telephone conduit system  |
| 18        | Pedestrian fence details  |
| 19        | Prestressed concrete piles (Alternative 1)                      |
| 20        | Prestressed concrete piles (Alternative 2)                      |
| 21        | Reinforcing steel schedule                                      |
| 22        | Reinforcing steel schedule                                      |
| 23        | Engineering geology   |
| 24        | Approach slabs  |

7

### LUMP SUM BID ITEMS

|   |    |
|---|----|
| Mobilization  | LS |
| Construction Surveying                              | LS |
| Dismantle and Remove Existing Structure Number 9999 | LS |
| Telephone Conduit System - B607**                   | LS |
| Deck Drainage System - B607                         | LS |

Bid item Deck Drainage System - B607 shall include drain assemblies, drain pipes, pipe supports and splash blocks

\*\*Cost responsibility shall be 100% Central Telephone Company of Virginia

16

11

### MISCELLANEOUS / ROAD ITEMS

| Item   | Units | Quantity |
|--|-------|----------|
| NBIS Access, Under Bridge - B607             | Day   | 1.0      |
| Traffic Barrier Service Concrete             | LF    | 1500     |
| Guardrail GR-2                               | LF    | 150      |
| Electronic Arrow                             | HR    | 1000     |
| Truck Mounted Attenuator                     | HR    | 48       |
| Group 2 Channelizing Devices                 | Day   | 5000     |
| Asphalt Concrete Base Course BM-25.0         | TON   | 250      |
| Asphalt Concrete Surface Course Ty. SM-12.5E | TON   | 75       |
| Demolition Of Pavement (Flexible)            | SY    | 250      |

⊗ Denotes items to be paid for on the basis of plan quantities in accordance with current Road and Bridge Specifications.

8

### ESTIMATED QUANTITIES - SUPERSTRUCTURE ONLY

| Item   | Units | Quantity |
|--|-------|----------|
| Concrete Low Shrinkage Class A4 Modified           | CY    | 528.4    |
| Corrosion Resistant Reinf. Steel, Class III        | LB    | 136,300  |
| Concrete Parapet                                   | LF    | 900      |
| Structural Steel Plate Girders ASTM A709 Grade 50W | LB*   | 250,000  |
| Adhesive Based Joint Sealer Class I 2 1/2"         | LF    | 84       |
| Cover Depth Survey                                 | SY    | 2,100    |
| Bridge Deck Grooving                               | SY    | 2,286    |
| Pedestrian Fence 8'                                | LF    | 900      |
| Concrete Class A4 Bridge Appr. Slab                | CY    | 103.8    |
| Reinf. Steel Bridge Approach Slab                  | LB    | 15,800   |

\* Lump Sum - Weight includes 2,800 lbs. of ASTM A709 Grade 36 steel

⊗ Denotes items to be paid for on the basis of plan quantities in accordance with current Road and Bridge Specifications.

Bid Item Bridge Deck Grooving includes the quantity for approach slabs.

17

| Rev. No. | Sheets Revised | Date |
|----------|----------------|------|
|          |                |      |
|          |                |      |
|          |                |      |
|          |                |      |
|          |                |      |
|          |                |      |

TABLE OF REVISIONS

15

ESTIMATED QUANTITIES SHEET  
 SAMPLE ESTIMATED QUANTITY TABLES  
 STANDARD SINGLE "B" NUMBER

12

|   |             |      |           |
|---|-------------|------|-----------|
| COMMONWEALTH OF VIRGINIA<br>DEPARTMENT OF TRANSPORTATION<br>STRUCTURE AND BRIDGE DIVISION |             |      |           |
| <b>ESTIMATED QUANTITIES<br/>INDEX OF SHEETS</b>   |             |      |           |
| No.   | Description | Date | Revisions |
|   |             |      |           |
|   |             |      |           |

|               |           |      |
|---------------|-----------|------|
| Designed: GSA | Date      | Plan |
| Drawn: JWC    | July 2017 | 999  |
| Checked: AL   |           |      |

PART 2  
DATE: 27Jul2017  
SHEET 1 of 7  
FILE NO. 03.01-1

999-99-002.dgn

16

13

### ESTIMATED QUANTITIES - SUBSTRUCTURE ONLY

|       |            | Concrete Class A3<br>CY | Reinforcing Steel<br>LB | Corrosion Resistant Reinf. Steel, Class 1<br>LB | Prestressed Concrete Piles<br>LF |     | Struct. Excav.<br>CY ⊗ | Concrete Parapet<br>LF ⊗ | Concrete Slab Slope Protec.<br>4" SY ⊗ | Select Backfill (Abutment Zone)<br>TON | Dry Riprap Class II 38"<br>TON |
|-------|------------|-------------------------|-------------------------|---|----------------------------------|-----|------------------------|--------------------------|--|--|--------------------------------|
|       |            |                         |                         |   | 12"                              | 24" |                        |                          |  |  |                                |
|       |            |                         |                         |   |                                  |     |                        |                          |  |  |                                |
| B601  | Abutment A | Neat                    | 42.2 ②                  | 3,690   | — ③                              | —   | —                      | 20                       | —                                      | —                                      | —                              |
|       |            | Footing                 | 68.2                    | 4,540   | —                                | 370 | —                      | 105                      | —                                      | 375                                    | 170                            |
|       | Pier 1     | Neat                    | 61.2                    | —   | 28,400                           | —   | —                      | —                        | —                                      | —                                      | —                              |
|       |            | Footing                 | 73.4                    | 6,270   | —                                | 101 | —                      | 115                      | —                                      | —                                      | —                              |
|       | Pier 2     | Neat                    | 62.4                    | 28,980  | —                                | —   | —                      | —                        | —                                      | —                                      | —                              |
|       |            | Footing                 | 73.4                    | 6,270   | —                                | 110 | —                      | 118                      | —                                      | —                                      | —                              |
|       | Bent 3     |                         | 33.0                    | 4,550   | —                                | —   | 303                    | —                        | —                                      | —                                      | —                              |
|       | Bent 4     |                         | 33.0                    | 4,550   | —                                | —   | 176                    | —                        | —                                      | —                                      | —                              |
|       | Abutment B | Neat                    | 46.0                    | 4,310   | —                                | —   | —                      | —                        | 30                                     | —                                      | —                              |
|       |            | Footing                 | 66.4                    | 4,540   | —                                | 360 | —                      | 105                      | —                                      | —                                      | 180                            |
| Total |            | 559.2                   | 67,700                  | 28,400  | 941                              | 479 | 443                    | 50                       | 375                                    | 350                                    |                                |
| B602  | Abutment A | Neat                    | 42.2                    | 3,690   | —                                | —   | —                      | 20                       | —                                      | —                                      | —                              |
|       |            | Footing                 | 68.2                    | 4,540   | —                                | 370 | —                      | 105                      | —                                      | 375                                    | 170                            |
|       | Pier 1     | Neat                    | 61.2                    | —   | 28,400                           | —   | —                      | —                        | —                                      | —                                      | —                              |
|       |            | Footing                 | 73.4                    | 6,270   | —                                | 101 | —                      | 115                      | —                                      | —                                      | —                              |
|       | Pier 2     | Neat                    | 62.4                    | 28,980  | —                                | —   | —                      | —                        | —                                      | —                                      | —                              |
|       |            | Footing                 | 73.4                    | 6,270   | —                                | 110 | —                      | 118                      | —                                      | —                                      | —                              |
|       | Bent 3     |                         | 33.0                    | 4,550   | —                                | —   | 303                    | —                        | —                                      | —                                      | —                              |
|       | Bent 4     |                         | 33.0                    | 4,550   | —                                | —   | 176                    | —                        | —                                      | —                                      | —                              |
|       | Abutment B | Neat                    | 46.0                    | 4,310   | —                                | —   | —                      | —                        | 30                                     | —                                      | —                              |
|       |            | Footing                 | 66.4                    | 4,540   | —                                | 360 | —                      | 105                      | —                                      | —                                      | 180                            |
| Total |            | 559.2                   | 67,700                  | 28,400  | 941                              | 479 | 443                    | 50                       | 375                                    | 350                                    |                                |

⊗ Denotes items to be paid for on the basis of plan quantities in accordance with current Road and Bridge Specifications.

7

8

11

#### LUMP SUM BID ITEMS

|   |    |
|---|----|
| Mobilization  | LS |
| Construction Surveying                              | LS |
| Dismantle and Remove Existing Structure Number 9999 | LS |
| Telephone Conduit System - B601 **                  | LS |
| Deck Drainage System - B601                         | LS |

Bid item Deck Drainage System - B601 shall include drain assemblies, drain pipes, pipe supports and splash blocks

\*\*Cost responsibility shall be 100% Central Telephone Company of Virginia

#### ESTIMATED QUANTITIES - SUPERSTRUCTURE ONLY

| Item   | Units | Quantities |         |
|--|-------|------------|---------|
|  |       | 10 B601    | 10 B602 |
| Concrete Low Shrinkage Class A4 Modified           | CY    | 528.4      | 528.4   |
| Corrosion Resistant Reinf. Steel, Class III        | LB    | 136,300    | 136,300 |
| Concrete Parapet ⊗                                 | LF    | 900        | 900     |
| Structural Steel Plate Girders ASTM A709 Grade 50W | LB *  | 250,000    | 250,000 |
| Adhesive Based Joint Sealer Class I 2/2" ⊗         | LF    | 84         | 84      |
| Cover Depth Survey ⊗                               | SY    | 2,100      | 2,100   |
| Bridge Deck Grooving ⊗                             | SY    | 2,286      | 2,286   |
| Pedestrian Fence 8' ⊗                              | LF    | 900        | 900     |
| Concrete Class A4 Bridge Appr. Slab ⊗              | CY    | 103.8      | 103.8   |
| Reinf. Steel Bridge Approach Slab ⊗                | LB    | 15,800     | 15,800  |

19 \*Lump Sum - Weight includes 5,600 lbs. of ASTM A709 Grade 36 steel

⊗ Denotes items to be paid for on the basis of plan quantities in accordance with current Road and Bridge Specifications.

Bid item Bridge Deck Grooving includes the quantity for approach slabs.

#### MISCELLANEOUS / ROAD ITEMS

| Item   | Units | Quantity |
|--|-------|----------|
| NBIS Access, Under Bridge - B601 and B602    | Day   | 1.0      |
| Traffic Barrier Service Concrete             | LF    | 1500     |
| Guardrail GR-2                               | LF    | 150      |
| Electronic Arrow                             | HR    | 1000     |
| Truck Mounted Attenuator                     | HR    | 48       |
| Group 2 Channelizing Devices                 | Day   | 5000     |
| Asphalt Concrete Base Course BM-25.0         | TON   | 250      |
| Asphalt Concrete Surface Course Ty. SM-12.5E | TON   | 75       |
| Demolition Of Pavement (Flexible) ⊗          | SY    | 250      |

⊗ Denotes items to be paid for on the basis of plan quantities in accordance with current Road and Bridge Specifications.

#### 14 INDEX OF SHEETS

| Sheet No. | Description   |
|-----------|---|
| 1         | Title sheet; Plan, profile, design exceptions and general notes |
| 2         | Estimated quantities and index of sheets                        |
| 3         | Substructure layout and slope protection                        |
| 4         | Abutments A and B plan and elevations                           |
| 5         | Abutments A and B details                                       |
| 6         | Piers 1 and 2   |
| 7         | Bents 3 and 4   |
| 8         | Bearing details   |
| 9         | Transverse section  |
| 10        | Framing plan and beam elevation                                 |
| 11        | Dead load deflection diagram and camber diagram                 |
| 12        | Deck slab plan  |
| 13        | Superstructure details and deck elevations                      |
| 14        | Adhesive based joint sealer details                             |
| 15        | Cast-in-place concrete parapet (F-Shape)                        |
| 16        | Bridge drainage details   |
| 17        | Telephone conduit system  |
| 18        | Pedestrian fence details  |
| 19        | Prestressed concrete piles                                      |
| 20        | Reinforcing steel schedule                                      |
| 21        | Reinforcing steel schedule                                      |
| 22        | Engineering geology   |
| 23        | Approach slabs  |

#### 17 TABLE OF REVISIONS

| Rev. No. | Sheets Revised | Date |
|----------|----------------|------|
|          |                |      |
|          |                |      |
|          |                |      |

12

|  |             |      |               |           |                  |
|--|-------------|------|---------------|-----------|------------------|
| COMMONWEALTH OF VIRGINIA<br>DEPARTMENT OF TRANSPORTATION |             |      |               |           |                  |
| STRUCTURE AND BRIDGE DIVISION                            |             |      |               |           |                  |
| ESTIMATED QUANTITIES INDEX OF SHEETS                     |             |      |               |           |                  |
| No.  | Description | Date | Designed: GSA | Date      | Plan             |
|  |             |      | Drawn: JLR    | Aug. 2016 | 999-             |
| Revisions  |             |      | Checked: AU   | Aug. 2016 | FILE NO. 03.01-2 |

### ESTIMATED QUANTITIES SHEET SAMPLE ESTIMATED QUANTITY TABLE DUAL BRIDGES WITH INDIVIDUAL "B" NUMBERS

999-99-002.dgn

15

(13)

**ESTIMATED QUANTITIES - SUBSTRUCTURE ONLY**

|             |         | Concrete Class A3<br>CY | Reinforcing Steel<br>LB | Corrosion Resistant Reinf. Steel, Class I<br>LB | Prestressed Concrete Piles<br>LF |     | Struct. Excav.<br>CY | Concrete Parapet<br>LF | Concrete Slab Slope Protec. 4" SY | Select Backfill (Abutment Zone)<br>TON | Dry Riprap Class II 38" TON |
|-------------|---------|-------------------------|-------------------------|---|----------------------------------|-----|----------------------|------------------------|-----------------------------------|--|-----------------------------|
|             |         |                         |                         |   | 12"                              | 24" |                      |                        |                                   |  |                             |
| Abutment A  | Neat    | 42.2                    | 3,690                   |   |                                  |     |                      | 20                     |                                   |  |                             |
|             | Footing | 68.2                    | 4,540                   |   | 370                              |     | 105                  |                        | 375                               | 170                                    |                             |
| Pier 1      | Neat    | 61.2                    |                         | 28,400  |                                  |     |                      |                        |                                   |  |                             |
|             | Footing | 73.4                    | 6,270                   |   | 101                              |     | 115                  |                        |                                   |  |                             |
| Pier 2      | Neat    | 62.4                    | 28,980                  |   |                                  |     |                      |                        |                                   |  |                             |
|             | Footing | 73.4                    | 6,270                   |   | 110                              |     | 118                  |                        |                                   |  |                             |
| Bent 3      |         | 33.0                    | 4,550                   |   |                                  | 303 |                      |                        |                                   |  |                             |
| Bent 4      |         | 33.0                    | 4,550                   |   |                                  | 176 |                      |                        |                                   |  |                             |
| Abutment B  | Neat    | 46.0                    | 4,310                   |   |                                  |     |                      | 30                     |                                   |  |                             |
|             | Footing | 66.4                    | 4,540                   |   | 360                              |     | 105                  |                        |                                   | 180                                    | 220                         |
| Total       |         | 559.2                   | 67,700                  | 28,400  | 941                              | 479 | 443                  | 50                     | 375                               | 350                                    | 220                         |
| Abutment A  | Neat    | 42.2                    | 3,690                   |   |                                  |     |                      | 20                     |                                   |  |                             |
|             | Footing | 68.2                    | 4,540                   |   | 370                              |     | 105                  |                        | 375                               | 170                                    |                             |
| Pier 1      | Neat    | 61.2                    |                         | 28,400  |                                  |     |                      |                        |                                   |  |                             |
|             | Footing | 73.4                    | 6,270                   |   | 101                              |     | 115                  |                        |                                   |  |                             |
| Pier 2      | Neat    | 62.4                    | 28,980                  |   |                                  |     |                      |                        |                                   |  |                             |
|             | Footing | 73.4                    | 6,270                   |   | 110                              |     | 118                  |                        |                                   |  |                             |
| Bent 3      |         | 33.0                    | 4,550                   |   |                                  | 303 |                      |                        |                                   |  |                             |
| Bent 4      |         | 33.0                    | 4,550                   |   |                                  | 176 |                      |                        |                                   |  |                             |
| Abutment B  | Neat    | 46.0                    | 4,310                   |   |                                  |     |                      | 30                     |                                   |  |                             |
|             | Footing | 66.4                    | 4,540                   |   | 360                              |     | 105                  |                        |                                   | 180                                    | 220                         |
| Total       |         | 559.2                   | 67,700                  | 28,400  | 941                              | 479 | 443                  | 50                     | 375                               | 350                                    | 220                         |
| Grand total |         | 1,118.4                 | 135,400                 | 56,800  | 1,882                            | 958 | 886                  | 100                    | 750                               | 700                                    | 440                         |

⊗ Denotes items to be paid for on the basis of plan quantities in accordance with current Road and Bridge Specifications.

**(14) INDEX OF SHEETS**

| Sheet No. | Description   |
|-----------|---|
| 1         | Title sheet; Plan, profile, design exceptions and general notes |
| 2         | Estimated quantities and index of sheets                        |
| 3         | Substructure layout and slope protection                        |
| 4         | Abutments A and B plan and elevations                           |
| 5         | Abutments A and B details                                       |
| 6         | Piers 1 and 2   |
| 7         | Bents 3 and 4   |
| 8         | Bearing details   |
| 9         | Transverse section  |
| 10        | Framing plan and beam elevation                                 |
| 11        | Dead load deflection diagram and camber diagram                 |
| 12        | Deck slab plan  |
| 13        | Superstructure details and deck elevations                      |
| 14        | Adhesive based joint sealer details                             |
| 15        | Cast-in-place concrete parapet (F-Shape)                        |
| 16        | Bridge drainage details   |
| 17        | Telephone conduit system  |
| 18        | Pedestrian fence details  |
| 19        | Prestressed concrete piles                                      |
| 20        | Reinforcing steel schedule                                      |
| 21        | Reinforcing steel schedule                                      |
| 22        | Engineering geology   |
| 23        | Approach slabs  |

**ESTIMATED QUANTITIES SHEET  
SAMPLE ESTIMATED QUANTITY TABLE  
BRIDGE WITH SINGLE "B" NUMBER AND DUAL LANE DIRECTION**

**LUMP SUM BID ITEMS**

|   |    |
|---|----|
| Mobilization  | LS |
| Construction Surveying                              | LS |
| Dismantle and Remove Existing Structure Number 9999 | LS |
| Telephone Conduit System - B601**                   | LS |
| Deck Drainage System - B601                         | LS |

Bid item Deck Drainage System - B601 shall include drain assemblies, drain pipes, pipe supports and splash blocks  
\*\*Cost responsibility shall be 100% Central Telephone Company of Virginia

**ESTIMATED QUANTITIES - SUPERSTRUCTURE ONLY**

| Item   | Units | Quantities |          | Grand total |
|--|-------|------------|----------|-------------|
|  |       | NBL (10)   | SBL (10) |             |
| Concrete Low Shrinkage Class A4 Modified           | CY    | 528.4      | 528.4    | 1,056.8     |
| Corrosion Resistant Reinf. Steel, Class III        | LB    | 136,300    | 136,300  | 272,600     |
| Concrete Parapet                                   | LF    | 900        | 900      | 1,800       |
| Structural Steel Plate Girders ASTM A709 Grade 50W | LB*   | 250,000    | 250,000  | 500,000     |
| Adhesive Based Joint Sealer Class I 2 1/2"         | LF    | 84         | 84       | 168         |
| Cover Depth Survey                                 | SY    | 2,100      | 2,100    | 4,200       |
| Bridge Deck Grooving                               | SY    | 2,286      | 2,286    | 4,572       |
| Pedestrian Fence 8'                                | LF    | 900        | 900      | 1,800       |
| Concrete Class A4 Bridge Appr. Slab                | CY    | 103.8      | 103.8    | 207.6       |
| Reinf. Steel Bridge Approach Slab                  | LB    | 15,800     | 15,800   | 31,600      |

\*Lump Sum - Weight includes 5,600 lbs. of ASTM A709 Grade 36 steel  
⊗ Denotes items to be paid for on the basis of plan quantities in accordance with current Road and Bridge Specifications.  
Bid Item Bridge Deck Grooving includes the quantity for approach slabs.

**MISCELLANEOUS / ROAD ITEMS**

| Item   | Units | Quantity |
|--|-------|----------|
| NBIS Access, Under Bridge - B601             | Day   | 1.0      |
| Traffic Barrier Service Concrete             | LF    | 1500     |
| Guardrail GR-2                               | LF    | 150      |
| Electronic Arrow                             | HR    | 1000     |
| Truck Mounted Attenuator                     | HR    | 48       |
| Group 2 Channelizing Devices                 | Day   | 5000     |
| Asphalt Concrete Base Course BM-25.0         | TON   | 250      |
| Asphalt Concrete Surface Course Ty. SM-12.5E | TON   | 75       |
| Demolition Of Pavement (Flexible)            | SY    | 250      |

⊗ Denotes items to be paid for on the basis of plan quantities in accordance with current Road and Bridge Specifications.

(17)

| Rev. No. | Sheets Revised | Date |
|----------|----------------|------|
|          |                |      |
|          |                |      |
|          |                |      |
|          |                |      |
|          |                |      |
|          |                |      |
|          |                |      |

TABLE OF REVISIONS

(12)

|   |             |      |   |           |      |
|---|-------------|------|---|-----------|------|
| COMMONWEALTH OF VIRGINIA<br>DEPARTMENT OF TRANSPORTATION<br>STRUCTURE AND BRIDGE DIVISION |             |      | ESTIMATED QUANTITIES<br>INDEX OF SHEETS |           |      |
|   |             |      |   |           |      |
| No.   | Description | Date | Designed: ..GSA...                      | Date      | Plan |
|   |             |      | Drawn: .....                            |           |      |
|   |             |      | Checked: .....                          | Aug. 2016 | 999- |
| Revisions   |             |      |   |           |      |

13 GENERAL NOTES (CONTINUED):

18 Bridge No. of existing bridge is 1234. Plan No. is 056-12.

The existing structure is designated a Type B structure in accordance with Sec. 411.

B.M.: Chis. Sq. on Conc. Slab  
26' Left Sta. 380+38 Sur. Centerline  
Elev. 10.000

10

| ESTIMATED QUANTITIES - SUBSTRUCTURE ONLY |         |                         |                         |   |                                      |               |                                      |               |                                |                                  |  |  |                                |
|--|---------|-------------------------|-------------------------|---|--------------------------------------|---------------|--------------------------------------|---------------|--------------------------------|----------------------------------|--|--|--------------------------------|
|  |         | Concrete Class A3<br>CY | Reinforcing Steel<br>LB | Corrosion Resistant Reinf. Steel, Class I<br>LB | Prestressed Concrete Piles 12"<br>LF |               | Prestressed Concrete Piles 24"<br>LF |               | Struct. Excav.<br>CY $\otimes$ | Concrete Parapet<br>LF $\otimes$ | Concrete Slab Slope Protec. 4"<br>SY $\otimes$ | Select Backfill (Abutment Zone)<br>TON | Dry Riprap Class II 38"<br>TON |
|  |         |                         |                         |   | Alternative 1                        | Alternative 2 | Alternative 1                        | Alternative 2 |                                |                                  |  |  |                                |
| Abutment A                               | Neat    | 42.2                    | 3,690                   |   |                                      |               |                                      |               |                                | 20                               |  |  |                                |
|  | Footing | 68.2                    | 4,540                   |   | 462                                  | 462           |                                      |               | 105                            |                                  | 375  | 170                                    |                                |
| Pier 1                                   | Neat    | 61.2                    |                         | 28,400  |                                      |               |                                      |               |                                |                                  |  |  |                                |
|  | Footing | 73.4                    | 6,270                   |   | 101                                  | 101           |                                      |               | 115                            |                                  |  |  |                                |
| Pier 2                                   | Neat    | 62.4                    | 28,980                  |   |                                      |               |                                      |               |                                |                                  |  |  |                                |
|  | Footing | 73.4                    | 6,270                   |   | 110                                  | 110           |                                      |               | 118                            |                                  |  |  |                                |
| Bent 3                                   |         | 33.0                    | 4,550                   |   |                                      |               | 303                                  | 303           |                                |                                  |  |  |                                |
| Bent 4                                   |         | 33.0                    | 4,550                   |   |                                      |               | 176                                  | 176           |                                |                                  |  |  |                                |
| Abutment B                               | Neat    | 46.0                    | 4,540                   |   |                                      |               |                                      |               |                                | 30                               |  |  |                                |
|  | Footing | 66.4                    | 4,310                   |   | 450                                  | 450           |                                      |               | 105                            |                                  | 180  | 220                                    |                                |
| Total                                    |         | 559.2                   | 67,700                  | 28,400  | 1,123                                | 1,123         | 479                                  | 479           | 443                            | 50                               | 375  | 350                                    | 220                            |

Alternate 1 - with Stainless Steel Strands (BPP-2)  
Alternate 2 - with Carbon Fiber Reinforced Polymer (CFRP) Strands (BPP-3)  
 $\otimes$  Denotes items to be paid for on the basis of plan quantities in accordance with current Road and Bridge Specifications.

14 INDEX OF SHEETS

| Sheet No. | Description   |
|-----------|---|
| 1         | Title sheet; Plan, profile, design exceptions and general notes |
| 2         | Estimated quantities and index of sheets                        |
| 3         | Substructure layout and slope protection                        |
| 4         | Abutments A and B plan and elevations                           |
| 5         | Abutments A and B details                                       |
| 6         | Piers 1 and 2   |
| 7         | Bents 3 and 4   |
| 8         | Bearing details   |
| 9         | Transverse section  |
| 10        | Framing plan and beam elevation                                 |
| 11        | Dead load deflection diagram and camber diagram                 |
| 12        | Deck slab plan  |
| 13        | Superstructure details and deck elevations                      |
| 14        | Adhesive based joint sealer details                             |
| 15        | Cast-in-place concrete parapet (F-Shape)                        |
| 16        | Bridge drainage details   |
| 17        | Telephone conduit system  |
| 18        | Pedestrian fence details  |
| 19        | Prestressed concrete piles (Alternative 1)                      |
| 20        | Prestressed concrete piles (Alternative 2)                      |
| 21        | Reinforcing steel schedule                                      |
| 22        | Reinforcing steel schedule                                      |
| 23        | Engineering geology   |
| 24        | Approach slabs  |

7 LUMP SUM BID ITEMS

| Item  | Units |
|---|-------|
| Mobilization  | LS    |
| Construction Surveying                              | LS    |
| Dismantle and Remove Existing Structure Number 9999 | LS    |
| Telephone Conduit System - B607**                   | LS    |
| Deck Drainage System - B607                         | LS    |

Bid item Deck Drainage System - B607 shall include drain assemblies, drain pipes, pipe supports and splash blocks

\*\*Cost responsibility shall be 100% Central Telephone Company of Virginia

11 MISCELLANEOUS / ROAD ITEMS

| Item   | Units | Quantity |
|--|-------|----------|
| NBIS Access, Under Bridge - B607             | Day   | 1.0      |
| Traffic Barrier Service Concrete             | LF    | 1500     |
| Guardrail GR-2                               | LF    | 150      |
| Electronic Arrow                             | HR    | 1000     |
| Truck Mounted Attenuator                     | HR    | 48       |
| Group 2 Channelizing Devices                 | Day   | 5000     |
| Asphalt Concrete Base Course BM-25.0         | TON   | 250      |
| Asphalt Concrete Surface Course Ty. SM-12.5E | TON   | 75       |
| Demolition Of Pavement (Flexible) $\otimes$  | SY    | 250      |

$\otimes$  Denotes items to be paid for on the basis of plan quantities in accordance with current Road and Bridge Specifications.

8 ESTIMATED QUANTITIES - SUPERSTRUCTURE ONLY

| Item   | Units | Quantity |
|--|-------|----------|
| Concrete Low Shrinkage Class A4 Modified                     | CY    | 528.4    |
| Corrosion Resistant Reinf. Steel, Class III $\otimes$        | LB    | 136,300  |
| Concrete Parapet $\otimes$                                   | LF    | 900      |
| Structural Steel Plate Girders ASTM A709 Grade 50W $\otimes$ | LB*   | 250,000  |
| Adhesive Based Joint Sealer Class I 2 1/2" $\otimes$         | LF    | 84       |
| Cover Depth Survey $\otimes$                                 | SY    | 2,100    |
| Bridge Deck Grooving $\otimes$                               | SY    | 2,286    |
| Pedestrian Fence 8' $\otimes$                                | LF    | 900      |
| Concrete Class A4 Bridge Appr. Slab $\otimes$                | CY    | 103.8    |
| Reinf. Steel Bridge Approach Slab $\otimes$                  | LB    | 15,800   |

19 \* Lump Sum - Weight includes 2,800 lbs. of ASTM A709 Grade 36 steel

$\otimes$  Denotes items to be paid for on the basis of plan quantities in accordance with current Road and Bridge Specifications.

Bid Item Bridge Deck Grooving includes the quantity for approach slabs.

16

9999-99-002.dgn

15

16

ESTIMATED QUANTITIES SHEET  
SAMPLE ESTIMATED QUANTITY TABLES  
WITH GENERAL NOTES SHOWN

17

| Rev. No.           | Sheets Revised | Date |
|--------------------|----------------|------|
| TABLE OF REVISIONS |                |      |

12

|  |             |           |                  |
|--|-------------|-----------|------------------|
| COMMONWEALTH OF VIRGINIA<br>DEPARTMENT OF TRANSPORTATION |             |           |                  |
| STRUCTURE AND BRIDGE DIVISION                            |             |           |                  |
| ESTIMATED QUANTITIES<br>INDEX OF SHEETS                  |             |           |                  |
| No.  | Description | Date      | Plan             |
|  |             |           |                  |
|  |             |           |                  |
|  |             |           |                  |
| Designed: ...GSA...                                      |             | Date      |                  |
| Drawn: ......  |             | July 2017 | 999              |
| Checked: ...Alt...                                       |             |           |                  |
| PART 2   |             |           | DATE: 27Jul2017  |
|  |             |           | SHEET 4 of 7     |
|  |             |           | FILE NO. 03.01-4 |



## CHECK LIST FOR ESTIMATED QUANTITIES SHEET

- ① All substructure quantities, except for bents and full integral abutments, are to be broken down into neat and footing.
- ② Orient the quantity in the upper left corner of block to allow for revisions. All quantities shown for each column should be aligned as shown in sample quantity table.
- ③ Place a short line centered in spaces where quantities are not required.
- ④ Mobilization and Construction Surveying are required on every project.
- ⑤ Use the symbol ⊗ to designate plan quantity items, see Section 109 of the VDOT Road and Bridge Specifications. Refer to File Nos. 03.06-1 thru 03.10-5 for bridge bid items to be designated as plan quantities.
- ⑥ Corrosion resistant reinforcing steel in the superstructure only shall be designated as a plan quantity.
- ⑦ Lump Sum items, other than structural steel, are to be listed in a separate table and not listed in tabular columns.
- ⑧ Superstructure and substructure items shall be listed in separate tables.
- ⑨ Separate the structural steel quantity by the type of main members as applicable.
- ⑩ The cell **ESTQ1**, found in the *bdetails1cel* library, should be used when you have only one bridge with a single "B" number and where the quantities are not broken down into lane direction requiring a grand total line. The cell **ESTQ2**, found in the *bdetails1cel* library, should be used when there are dual bridges with individual "B" numbers. You need to edit the "B" number B6XX to reflect the correct "B" numbers on your project. The cell **ESTQ3**, found in the *bdetails1cel* library, should be used when you have a single bridge with a single "B" number and where the quantities are broken down between lane directions, for example NBL and WBL or EBL and WBL. The lane directions shown, XBL, should be edited to reflect the lane direction required. This cell also provides a line for the grand total. This will be utilized for your transport estimate. When the "B" number is included in pay items and notes, in these cells, it should be edited to reflect the "B" number designation assigned.
- ⑪ Use this table for roadway items on maintenance and bridge only projects and miscellaneous bridge items.
- ⑫ For instructions on completing the title block, see File No. 03.03.
- ⑬ For instructions on completing the project block, see File No. 03.02.

### ESTIMATED QUANTITIES SHEET CHECK LIST

PART 2  
DATE: 17Aug2016  
SHEET 5 of 7  
FILE NO. 03.01-5

- ⑭ An index of sheets shall be provided regardless of the number of sheets in the plan set. For arrangement of plan sheets, see File No. 01.02-4. The Index of sheets shall typically be located below the project block and between construction lines. The cell **INDEX**, found in the *bdetails1.cel* library, shall be used and should be located by snapping the cell to the top of left construction line. The **INDEX** cell is pre-set with sheet numbers 1-25 and the description of the first two sheets. To customize the index, drop status on the cell only. Using the *Edit Text* command, select the description of sheets 1 and 2. Enter the descriptions of the remaining plan sheets, inserting an [ENTER] at the end of each description. When the editing is applied, the descriptions will be placed properly within the blocks. For a set of plans less than or greater than 25 sheets, lines may be added to or subtracted from the table.
- ⑮ For instructions on completing this portion of sheet, see File No. 01.16.
- ⑯ For instructions on developing the CADD sheet number, see File Nos. 01.01-6 and 01.14-4.
- ⑰ For information about the Table of Revisions, see File No. 03.03. Instructions on revising estimated quantities sheet can be found in File No. 03.13. For additional general instructions on revising sheets, see File No. 01.14-1 thru -10.
- ⑱ In some cases, the **GENERAL NOTE** will need to be continued on sheet 2. The statement "(Continued on Sheet 2)" will be shown below the last note shown on the Title Sheet. Depending on space available, the GENERAL NOTE will be shown below the project block and the index of sheets will be moved below or to a different sheet it needed.
- ⑲ Bid item for structural steel is always lump sum. While the example shown indicates that the weight includes other steel, \* Lump sum shall always be annotated at the bottom of the table (with or without other steel included).

**ESTIMATED QUANTITIES SHEET  
CHECK LIST**

PART 2  
DATE: 27Jul2017  
SHEET 6 of 7  
FILE NO. 03.01-6

## NOTES UNDER THE ESTIMATED QUANTITIES (TABLE)

Place the following notes, when required, under the TABLE OF ESTIMATED QUANTITIES. Notes in single parenthesis indicate alternate wordings to be selected by the designer. Notes in double parentheses (*italics*) are explanations and instructions to the designer.

Optional combination concrete slab and stone slope protection will not be allowed on this project. (*Stone slope protection is not to be used for projects in urban areas.*)

Lump sum - Includes ( \_\_\_\_\_ ) lbs. metal in (drain assemblies) (downspouts) ( \_\_\_\_\_ ). (*When metal in deck drainage system is not a separate bid item.*)

Cost of splash blocks is to be included in the price bid for (concrete slab slope protection) (concrete slab riprap) ( \_\_\_\_\_ riprap). (*Use when splash blocks are used and deck drainage system is not a separate bid item.*)

Deck drainage system includes (drain assemblies) (drain pipes) (downspouts) (pipe supports) (splash blocks) ( \_\_\_\_\_ ).

The Contractor, at his option, may furnish ( \_\_\_\_\_ ) riprap in lieu of concrete slab riprap. The optional design shall be as shown on the plans. Payment will be made at the price bid per square yard for concrete slab riprap and shall include the cost of bedding.

### LUMP SUM TABLE

These items shall be listed in the Lump Sum Table:

(Dismantle and Remove) (Remove Portion of) Existing Structure ( \_\_\_\_\_ ) (*B or Virginia Structure No.* ) - Lump Sum.

Deck Drainage System – Lump Sum

Telephone Conduit System – Lump Sum

Water Line – Lump Sum

Gas Line – Lump Sum

Navigation Lights – Lump Sum

Conduit System – Lump Sum

Lighting System – Lump Sum

## ESTIMATED QUANTITIES SHEET NOTES

PART 2  
DATE: 31Oct2019  
SHEET 7 of 7  
FILE NO. 03.01-7

General:

The upper right-hand corner project block for the second sheet of a set of bridge plans is illustrated below. Detailed information is given for the required data in each block.

| STATE | FEDERAL AID |                 | STATE |                    | SHEET NO. |
|-------|-------------|-----------------|-------|--------------------|-----------|
|       | ROUTE       | PROJECT         | ROUTE | PROJECT            |           |
| VA.   | —           | STP-5127-1(350) | 29    | 0029-062-104, B601 | 2         |

The diagram shows four callouts pointing to specific fields in the table above:

- Callout 1 points to the 'PROJECT' field under 'FEDERAL AID' (STP-5127-1(350)).
- Callout 2 points to the 'PROJECT' field under 'STATE' (0029-062-104, B601).
- Callout 3 points to the 'SHEET NO.' field (2).
- Callout 4 points to the 'ROUTE' field under 'STATE' (29).

- ① Federal aid route and project number: For projects with federal aid, enter the federal aid project number; for projects without federal aid, draw a long dash in the block. This is shown only on the title sheet and on sheet 2 (sheet with Table of Revisions). The route number block is not used at this time and will be already filled in with a dash.
- ② State project number: Do not include the PE number or the construction number.
- ③ Sheet no.: Enter the number of the bridge plan sheet.
- ④ Enter route number when available. Otherwise, draw a dash in this block.

**Text Sizes:** The information in the project block may be placed when the sheet is first generated using the *bsht* program from the **VDOT BRIDGE MDL** task bar. This will ensure that all parameters (size, weight, color, level and font) are correct. If the information is placed at a later time, the *bsht* program may be re-accessed. By selecting “Existing”, additional text may be placed automatically.

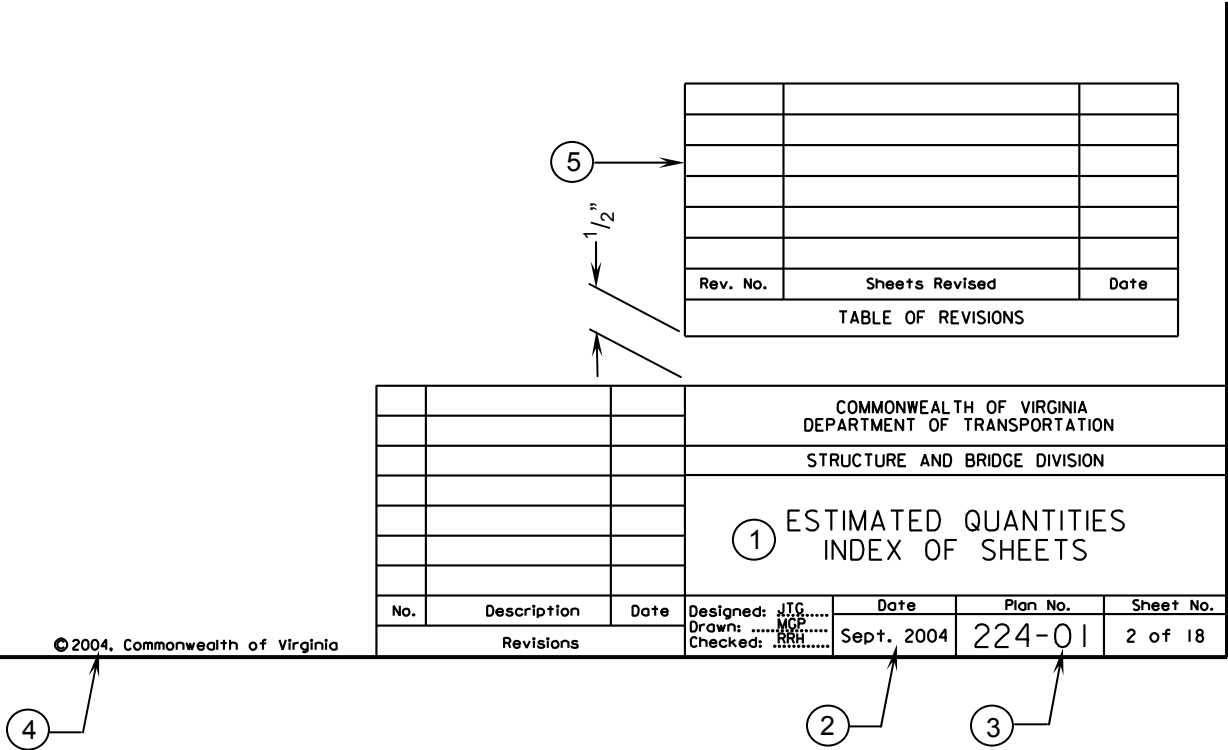
To set the text parameters without using the *bsht* program, select *bls* program from the **VDOT BRIDGE MDL** task bar. From the Line Settings S&B sub-palette, select *lettering/dimension*.

**ESTIMATED QUANTITIES SHEET  
PROJECT BLOCK  
GENERAL INFORMATION**

PART 2  
DATE 14Jun2010  
SHEET 1 of 1  
FILE NO. 03.02

General:

The lower right-hand corner of the sheet contains the title block. Detailed information is given for the required data in each block.



- ① Provide titles as shown.
- ② Format for date is: month and year; e.g., Sept. 2004 - no comma between month and year. Month and year shall agree with date on title sheet.
- ③ Each bridge plan requires a plan number with a two-digit suffix. This number is on each sheet of the plans. See File No. 02.04-3 for further information.
- ④ Copyright date (year) shall reflect the year the plans are dated.
- ⑤ Add the table of revisions to the sheet containing the estimated quantities and index of sheets on every set of plans (for most plan sets, this will be sheet 2). The table is a cell in *bdetails1.cel* library and is named **RVTAB**. The placement of the cell is illustrated in the drawing above.

**Text Sizes:** The description, initials, date, plan number and sheet number may be placed when the sheet is first generated, using the *bsht* program from the **VDOT BRIDGE MDL** task bar. This will ensure that all parameters (size, weight, color, level and font) are correct. If the information is placed at a later time, the *bsht* program may be re-accessed. By selecting *Existing*, additional text may be placed automatically.

Text in table of revisions and in revision block shall be selected from the **Line Settings S&B** sub-palette; select *CADD no./initials*.

**ESTIMATED QUANTITIES SHEET  
TITLE BLOCK  
GENERAL INFORMATION**

PART 2  
DATE: 14Jun2010  
SHEET 1 of 1  
FILE NO. 03.03

General:

Non-standard Pay Items, their descriptions, and their measurement, as used on Design-Bid-Build construction and maintenance projects shall be developed into Project Specific Specifications instead of including in the Plans. This does not prohibit plan notes for the inclusion of appropriate incidental items in the cost of related items.

The next several sections of the manual contain lists of items used as bid items on bridge/structural drawings (contract plans) and contracts. It is important that the designer makes certain that the wording for each bid item shown on the plans conforms strictly to this list. Also shown for each item is the guide for “rounding off” in the computation of these quantities and the pay unit to be used for the bid item. Items listed with ( ) require data to be entered – some may be left blank; others will indicate the type of data required, e.g., (depth). The bid items are broken into the following areas:

- Bridge superstructure (File Nos. 03.06-1 thru -8)
- Bridge substructure (File Nos. 03.07-1 thru -4)
- Bridge incidentals (File No. 03.08)
- Structural widening or repair – superstructure (File Nos. 03.09-1 thru -8)
- Structural widening or repair – substructure (File Nos. 03.10-1 thru -5)
- Bid items required on all projects/Occasional use (File Nos. 03.11-1 and -2)
- Generic non-standard items in Trns-port (File No. 03.12-1 thru -6)

Cost estimates are made utilizing the Trns.port program (PES module).

Refer to File Nos. 03.01-1 thru -7 for sample tables and a check list for “Estimated Quantities” to be used as a format for showing bid items on the plans.

**FOOTNOTES** (Used for File Nos. 03.06-1 thru 03.12)

- ⊗ Plan quantity
- ① Sometimes is included in other bid items – should be consistent for all bridges included in the same contract.
- ② Standard parapet (F-shape, Part 3 of this manual, standard BPB series).
- ③ See Part 2 of this manual, Porous backfill and pipe underdrain.
- ④ Lump Sum (LS) to be used as bid prices.
- ⑤ Add this item for all bridges. For Construction Surveying, use approximately \$1500 per span.
- ⑥ Intentionally left blank.
- ⑦ Intentionally left blank.

- ⑧ Cofferdams for footing excavations shall be included in the plans as a bid item if both of the following conditions are met:
- The elevation of the bottom of the footing is below the ordinary high water elevation or mean high tide elevation.
  - One or more of the footing corners is in the stream or within a distance “d” from the edge of the water (the contour line of ordinary high water elevation or mean high tide elevation).

$$\text{where "d" (feet)} = 4 + \left[ \begin{array}{l} \text{the difference between the elevation of the bottom of} \\ \text{the footing and either the ordinary high water elevation} \\ \text{or the mean high tide elevation} \end{array} \right]$$

Cofferdams of significantly different sizes shall have different bid items by identifying specific locations. In such cases, to reduce the work involved in possible plan changes, the items may be listed under the Table of Estimated Quantities, such as:

- Cofferdams, EA 3 (Piers 1, 2 and 4)
- Cofferdams, EA 1 (Pier 2)

- ⑨ Plan quantity for superstructure only.
- ⑩ Use following for quantity estimates:

| depth | tons/s.y. |
|-------|-----------|
| 20"   | 1.111     |
| 26"   | 1.444     |
| 38"   | 2.111     |
| 53"   | 2.944     |

- ⑪ Use the following for quantity estimates:

| depth | tons/s.y. |
|-------|-----------|
| 5'    | 3.333     |
| 8'    | 5.333     |

**ESTIMATED QUANTITIES SHEET  
 BID ITEMS - INSTRUCTIONS**

PART 2  
 DATE: 17Aug2016  
 SHEET 2 of 3  
 FILE NO. 03.05-2

- ⑫ Use the following for quantity estimates:

| depth | tons/s.y. |
|-------|-----------|
| 18"   | 1.000     |
| 24"   | 1.333     |
| 30"   | 1.667     |

- ⑬ Use generic item code shown or use specific item code from BRIDGE SUBSTRUCTURE list.
- ⑭ Type will be defined by the designer and specified in the contract documents. The designer shall provide plan details, limits and corresponding location(s) for each Type specified. These will essentially be non-standard items as specific details may vary per project until such time that additional guidance can be provided.
- ⑮ This is a non-standard item code. Supply B or Virginia STR. NO. or Type.
- ⑯ Under this bid item, the Contractor may choose to use 21A, 21B or Select Material Type 1, minimum CBR 30 in the select backfill zone.
- ⑰ Round off to 0.1 in Table of Estimated Quantities, but enter as a whole number in Trns.port estimate.
- ⑱ The quantity and type of asphalt concrete used on the bridge shall be shown in the estimated quantity table on the bridge plans. The item number used on the bridge trns~port estimates shall be the roadway item code number; see File 03.11-1 for a listing of frequently used types of asphalt concrete. The bridge and roadway designers shall coordinate with each other on the type(s) of asphalt concrete to be used on the individual projects.

**ESTIMATED QUANTITIES SHEET  
BID ITEMS - INSTRUCTIONS**

PART 2  
DATE: 31Oct2019  
SHEET 3 of 3  
FILE NO. 03.05-3



## LIST OF BID ITEMS – BRIDGE SUPERSTRUCTURE

| REFER TO<br>FOOTNOTE | ITEM   | VDOT<br>SPECS<br>REF.            | QTY.<br>ROUND-<br>OFF | PAY<br>UNIT | ITEM<br>CODE                              |
|----------------------|--|----------------------------------|-----------------------|-------------|---|
| ⊗ (1)                | Adhesive Based Joint Sealer (Class I)                          | 1" 420<br>1½"<br>2"<br>2½"<br>3" | 1                     | LF          | 62410<br>62411<br>62412<br>62413<br>62414 |
| ⊗ (1)                | Adhesive Based Joint Sealer (Class II)                         | 2" 420<br>3"<br>4½"<br>5½"       | 1                     | LF          | 62418<br>62419<br>62420<br>62421          |
| ⊗ (1)                | Adhesive Based Joint Sealer (Class III)                        | ½" 420<br>1"<br>2"<br>3"<br>4"   | 1                     | LF          | 62425<br>62426<br>62427<br>62428<br>62429 |
| ⊗                    | Architectural Treatment  | ATTD                             | 1                     | SY          | 62004                                     |
| (18)                 | Asphalt Concrete   |                                  |                       |             |   |
| (1)                  | Bearing Device   | 408                              | 10                    | LB          | 61980                                     |
| ⊗                    | Bridge Deck Grooving   | 404                              | 1                     | SY          | 60490                                     |
| ⊗                    | Bridge Median Barrier C-I-P Concr. F-Shape                     | 410                              | 1                     | LF          | 62056                                     |
| ⊗                    | Bridge Median Barrier, 42" Single Slope                        | 410                              | 1                     | LF          | 62060                                     |
| ⊗                    | Bridge Median Barrier Ty. MC                                   | 410                              | 1                     | LF          | 62040                                     |
| ⊗                    | Bridge Median Barrier Ty. MC(J)                                | 410                              | 1                     | LF          | 62050                                     |
| (15)                 | Coating of New Metal on Structures<br>(B or Virginia STR. NO.) | 411                              | ---                   | LS          | 61755                                     |
| (17)                 | Concrete Class A3  | 404                              | 0.1                   | CY          | 60403                                     |
| (17)                 | Concrete Class A4  | 404                              | 0.1                   | CY          | 60404                                     |
| (17)                 | Concrete Class A4 (Lightweight)                                | 404                              | 0.1                   | CY          | 60410                                     |
| ⊗ (17)               | Concrete Class A4 Bridge Appr. Slab                            | 316                              | 0.1                   | CY          | 60450                                     |
| (17)                 | Concrete Low Shrinkage Class A4 Mod.                           | 404                              | 0.1                   | CY          | 60409                                     |
| (17)                 | Concrete Low Shrinkage Class A4 Mod.<br>(Lightweight)          | 404                              | 0.1                   | CY          | 60411                                     |

### ESTIMATED QUANTITIES SHEET BID ITEMS – BRIDGE SUPERSTRUCTURE

PART 2  
DATE: 31Oct2019  
SHEET 1 of 9  
FILE NO. 03.06-1

## LIST OF BID ITEMS – BRIDGE SUPERSTRUCTURE

| REFER TO<br>FOOTNOTE | ITEM   | VDOT<br>SPECS<br>REF. | QTY.<br>ROUND-<br>OFF | PAY<br>UNIT | ITEM<br>CODE |
|----------------------|--|-----------------------|-----------------------|-------------|--------------|
| ⊗ (2)                | Concrete Parapet   | 410                   | 1                     | LF          | 62010        |
| ⊗ (2)                | Concrete Parapet, 42"                                      | 410                   | 1                     | LF          | 62024        |
| ⊗ (2)                | Concrete Parapet (Lightweight)                             | 410                   | 1                     | LF          | 62011        |
| (15)                 | Concrete Surface Color Coating<br>(B or Virginia STR. NO.) | ATTD                  | ---                   | LS          | 62110        |
| ⊗ (9)                | Corrosion Resistant Reinforcing Steel,<br>Class I          | 406                   | 10                    | LB          | 61711        |
| ⊗ (9)                | Corrosion Resistant Reinforcing Steel,<br>Class II         | 406                   | 10                    | LB          | 61712        |
| ⊗ (9)                | Corrosion Resistant Reinforcing Steel,<br>Class III        | 406                   | 10                    | LB          | 61713        |
| ⊗                    | Cover Depth Survey   | 404                   | 1                     | SY          | 60495        |
|                      | Deck Slab Closure  | ATTD, 404             | 1                     | CF          | 61030        |
| ⊗                    | Elastomeric Expansion Dam 0" – 2"                          | 421                   | 1                     | LF          | 62491        |
|                      | 2+ – 3"  |                       |                       |             | 62492        |
|                      | 3+ – 4"  |                       |                       |             | 62493        |
|                      | 4+ – 5"  |                       |                       |             | 62494        |
|                      | Electrical Operating Equipment                             | ATTD                  | ---                   | LS          | 62510        |
|                      | Epoxy Overlay  | 431                   | 1                     | SY          | 62190        |
| (15)                 | Erection of Structural Steel (Type)                        | 407                   | ---                   | LS          | 61760        |
| (15)                 | Fabrication of Structural Steel (Type)                     | 407                   | ---                   | LS          | 61770        |
| ⊗                    | Guardrail, Thrie Beam                                      | PLAN, 410             | 1                     | LF          | 60515        |
|                      | Lightning Protection                                       | ATTD                  | ---                   | LS          | 62530        |
| (17)                 | Lumber, Treated  | 418                   | 0.1                   | MFBM        | 62220        |
| (17)                 | Lumber, Untreated  | 418                   | 0.1                   | MFBM        | 62240        |
|                      | Mechanical Operating Equipment                             | ATTD                  | ---                   | LS          | 62520        |
|                      | Pneumatically Applied Mortar                               | 412                   | 1                     | SF          | 60512        |

### ESTIMATED QUANTITIES SHEET BID ITEMS – BRIDGE SUPERSTRUCTURE

PART 2  
DATE: 31Oct2019  
SHEET 2 of 9  
FILE NO. 03.06-2

**LIST OF BID ITEMS – BRIDGE SUPERSTRUCTURE**

| REFER TO FOOTNOTE | ITEM                              | VDOT SPECS REF. | QTY. ROUND-OFF | PAY UNIT | ITEM CODE |
|-------------------|-----------------------------------|-----------------|----------------|----------|-----------|
|                   | Prestressed Concrete Beam, Bulb-T |                 |                |          |           |
|                   | 29" depth 40' – 50'               | 405             | 1              | EA       | 61210     |
|                   | 29" depth +50' – 60'              |                 |                |          | 61211     |
|                   | 29" depth +60' – 70'              |                 |                |          | 61208     |
|                   | 29" depth +70' – 80'              |                 |                |          | 61209     |
|                   | 37" depth +50' – 60'              | 405             | 1              | EA       | 61213     |
|                   | 37" depth +60' – 70'              |                 |                |          | 61214     |
|                   | 37" depth +70' – 80'              |                 |                |          | 61215     |
|                   | 37" depth +80' – 90'              |                 |                |          | 61216     |
|                   | 45" depth +60' – 70'              | 405             | 1              | EA       | 61222     |
|                   | 45" depth +70' – 80'              |                 |                |          | 61223     |
|                   | 45" depth +80' – 90'              |                 |                |          | 61224     |
|                   | 45" depth +90' – 100'             |                 |                |          | 61225     |
|                   | 45" depth +100' – 110'            |                 |                |          | 61226     |
|                   | 45" depth +110' – 120'            |                 |                |          | 61227     |
|                   | 53" depth +60' – 70'              | 405             | 1              | EA       | 61232     |
|                   | 53" depth +70' – 80'              |                 |                |          | 61233     |
|                   | 53" depth +80' – 90'              |                 |                |          | 61234     |
|                   | 53" depth +90' – 100'             |                 |                |          | 61235     |
|                   | 53" depth +100' – 110'            |                 |                |          | 61236     |
|                   | 53" depth +110' – 120'            |                 |                |          | 61237     |
|                   | 53" depth +120' – 130'            |                 |                |          | 61238     |
|                   | 61" depth +70' – 80'              | 405             | 1              | EA       | 61243     |
|                   | 61" depth +80' – 90'              |                 |                |          | 61244     |
|                   | 61" depth +90' – 100'             |                 |                |          | 61245     |
|                   | 61" depth +100' – 110'            |                 |                |          | 61246     |
|                   | 61" depth +110' – 120'            |                 |                |          | 61247     |
|                   | 61" depth +120' – 130'            |                 |                |          | 61248     |
|                   | 61" depth +130' – 140'            |                 |                |          | 61249     |
|                   | 69" depth +70' – 80'              | 405             | 1              | EA       | 61252     |
|                   | 69" depth +80' – 90'              |                 |                |          | 61253     |
|                   | 69" depth +90' – 100'             |                 |                |          | 61254     |
|                   | 69" depth +100' – 110'            |                 |                |          | 61255     |
|                   | 69" depth +110' – 120'            |                 |                |          | 61256     |
|                   | 69" depth +120' – 130'            |                 |                |          | 61257     |
|                   | 69" depth +130' – 140'            |                 |                |          | 61258     |
|                   | 69" depth +140' – 150'            |                 |                |          | 61259     |
|                   | 77" depth +80' – 90'              | 405             | 1              | EA       | 61263     |
|                   | 77" depth +90' – 100'             |                 |                |          | 61264     |
|                   | 77" depth +100' – 110'            |                 |                |          | 61265     |
|                   | 77" depth +110' – 120'            |                 |                |          | 61266     |
|                   | 77" depth +120' – 130'            |                 |                |          | 61267     |
|                   | 77" depth +130' – 140'            |                 |                |          | 61268     |
|                   | 77" depth +140' – 150'            |                 |                |          | 61269     |

**ESTIMATED QUANTITIES SHEET  
 BID ITEMS – BRIDGE SUPERSTRUCTURE**

PART 2  
 DATE: 17Aug2016  
 SHEET 3 of 9  
 FILE NO. 03.06-3

## LIST OF BID ITEMS – BRIDGE SUPERSTRUCTURE

| REFER TO<br>FOOTNOTE | ITEM                              | VDOT<br>SPECS<br>REF. | QTY.<br>ROUND-<br>OFF | PAY<br>UNIT | ITEM<br>CODE |
|----------------------|-----------------------------------|-----------------------|-----------------------|-------------|--------------|
|                      | Prestressed Concrete Beam, Bulb-T |                       |                       |             |              |
|                      | 85" depth +80' – 90'              | 405                   | 1                     | EA          | 61272        |
|                      | 85" depth +90' – 100'             |                       |                       |             | 61273        |
|                      | 85" depth +100' – 110'            |                       |                       |             | 61274        |
|                      | 85" depth +110' – 120'            |                       |                       |             | 61275        |
|                      | 85" depth +120' – 130'            |                       |                       |             | 61276        |
|                      | 85" depth +130' – 140'            |                       |                       |             | 61277        |
|                      | 85" depth +140' – 150'            |                       |                       |             | 61278        |
|                      | 85" depth +150' – 160'            |                       |                       |             | 61279        |
|                      | 93" depth +90' – 100'             | 405                   | 1                     | EA          | 61283        |
|                      | 93" depth +100' – 110'            |                       |                       |             | 61284        |
|                      | 93" depth +110' – 120'            |                       |                       |             | 61285        |
|                      | 93" depth +120' – 130'            |                       |                       |             | 61286        |
|                      | 93" depth +130' – 140'            |                       |                       |             | 61287        |
|                      | 93" depth +140' – 150'            |                       |                       |             | 61288        |
|                      | 93" depth +150' – 160'            |                       |                       |             | 61289        |
|                      | Prestressed Concrete Box Beam     |                       |                       |             |              |
|                      | 3' x 2'-3" x (40' – 45')          | 405                   | 1                     | EA          | 61636        |
|                      | 3' x 2'-3" x (+45' – 50')         |                       |                       |             | 61637        |
|                      | 3' x 2'-3" x (+50' – 55')         |                       |                       |             | 61638        |
|                      | 3' x 2'-3" x (+55' – 60')         |                       |                       |             | 61639        |
|                      | 3' x 2'-3" x (+60' – 65')         |                       |                       |             | 61640        |
|                      | 3' x 2'-3" x (+65' – 70')         |                       |                       |             | 61642        |
|                      | 3' x 2'-9" x (+50' – 55')         | 405                   | 1                     | EA          | 61650        |
|                      | 3' x 2'-9" x (+55' – 60')         |                       |                       |             | 61651        |
|                      | 3' x 2'-9" x (+60' – 65')         |                       |                       |             | 61652        |
|                      | 3' x 2'-9" x (+65' – 70')         |                       |                       |             | 61653        |
|                      | 3' x 2'-9" x (+70' – 75')         |                       |                       |             | 61654        |
|                      | 3' x 2'-9" x (+75' – 80')         |                       |                       |             | 61655        |
|                      | 3' x 3'-3" x (+60' – 65')         | 405                   | 1                     | EA          | 61657        |
|                      | 3' x 3'-3" x (+65' – 70')         |                       |                       |             | 61658        |
|                      | 3' x 3'-3" x (+70' – 75')         |                       |                       |             | 61659        |
|                      | 3' x 3'-3" x (+75' – 80')         |                       |                       |             | 61660        |
|                      | 3' x 3'-3" x (+80' – 85')         |                       |                       |             | 61661        |
|                      | 3' x 3'-3" x (+85' – 90')         |                       |                       |             | 61662        |
|                      | 3' x 3'-6" x (+70' – 75')         | 405                   | 1                     | EA          | 61666        |
|                      | 3' x 3'-6" x (+75' – 80')         |                       |                       |             | 61667        |
|                      | 3' x 3'-6" x (+80' – 85')         |                       |                       |             | 61668        |
|                      | 3' x 3'-6" x (+85' – 90')         |                       |                       |             | 61669        |
|                      | 3' x 3'-6" x (+90' – 95')         |                       |                       |             | 61670        |

### ESTIMATED QUANTITIES SHEET BID ITEMS – BRIDGE SUPERSTRUCTURE

PART 2  
DATE: 17Aug2016  
SHEET 4 of 9  
FILE NO. 03.06-4

## LIST OF BID ITEMS – BRIDGE SUPERSTRUCTURE

| REFER TO<br>FOOTNOTE | ITEM                          | VDOT<br>SPECS<br>REF. | QTY.<br>ROUND-<br>OFF | PAY<br>UNIT | ITEM<br>CODE |
|----------------------|-------------------------------|-----------------------|-----------------------|-------------|--------------|
|                      | Prestressed Concrete Box Beam |                       |                       |             |              |
|                      | 4' x 2'-3" x (40' – 45')      | 405                   | 1                     | EA          | 61675        |
|                      | 4' x 2'-3" x (+45' – 50')     |                       |                       |             | 61676        |
|                      | 4' x 2'-3" x (+50' – 55')     |                       |                       |             | 61677        |
|                      | 4' x 2'-3" x (+55' – 60')     |                       |                       |             | 61678        |
|                      | 4' x 2'-3" x (+60' – 65')     |                       |                       |             | 61679        |
|                      | 4' x 2'-3" x (+65' – 70')     |                       |                       |             | 61680        |
|                      | 4' x 2'-9" x (50' – 55')      | 405                   | 1                     | EA          | 61681        |
|                      | 4' x 2'-9" x (+55' – 60')     |                       |                       |             | 61682        |
|                      | 4' x 2'-9" x (+60' – 65')     |                       |                       |             | 61683        |
|                      | 4' x 2'-9" x (+65' – 70')     |                       |                       |             | 61684        |
|                      | 4' x 2'-9" x (+70' – 75')     |                       |                       |             | 61685        |
|                      | 4' x 2'-9" x (+75' – 80')     |                       |                       |             | 61686        |
|                      | 4' x 3'-3" x (+60' – 65')     | 405                   | 1                     | EA          | 61688        |
|                      | 4' x 3'-3" x (+65' – 70')     |                       |                       |             | 61689        |
|                      | 4' x 3'-3" x (+70' – 75')     |                       |                       |             | 61690        |
|                      | 4' x 3'-3" x (+75' – 80')     |                       |                       |             | 61691        |
|                      | 4' x 3'-3" x (+80' – 85')     |                       |                       |             | 61692        |
|                      | 4' x 3'-6" x (+70' – 75')     | 405                   | 1                     | EA          | 61694        |
|                      | 4' x 3'-6" x (+75' – 80')     |                       |                       |             | 61695        |
|                      | 4' x 3'-6" x (+80' – 85')     |                       |                       |             | 61696        |
|                      | 4' x 3'-6" x (+85' – 90')     |                       |                       |             | 61697        |
|                      | 4' x 3'-6" x (+90' – 95')     |                       |                       |             | 61698        |
|                      | Prestressed Concrete I Beam   |                       |                       |             |              |
|                      | Type II – (35' to 40')        | 405                   | 1                     | EA          | 61320        |
|                      | Type II – (+40' to 45')       |                       |                       |             | 61321        |
|                      | Type II – (+45' to 50')       |                       |                       |             | 61322        |
|                      | Type II – (+50' to 55')       |                       |                       |             | 61323        |
|                      | Type II – (+55' to 60')       |                       |                       |             | 61324        |
|                      | Type III – (40' to 45')       | 405                   | 1                     | EA          | 61330        |
|                      | Type III – (+45' to 50')      |                       |                       |             | 61331        |
|                      | Type III – (+50' to 55')      |                       |                       |             | 61332        |
|                      | Type III – (+55' to 60')      |                       |                       |             | 61333        |
|                      | Type III – (+60' to 65')      |                       |                       |             | 61334        |
|                      | Type III – (+65' to 70')      |                       |                       |             | 61335        |
|                      | Type III – (+70' to 75')      |                       |                       |             | 61336        |
|                      | Type III – (+75' to 80')      |                       |                       |             | 61337        |
|                      | Type IV – (65' to 70')        | 405                   | 1                     | EA          | 61340        |
|                      | Type IV – (+70' to 75')       |                       |                       |             | 61341        |
|                      | Type IV – (+75' to 80')       |                       |                       |             | 61342        |
|                      | Type IV – (+80' to 85')       |                       |                       |             | 61343        |
|                      | Type IV – (+85' to 90')       |                       |                       |             | 61344        |
|                      | Type IV – (+90' to 95')       |                       |                       |             | 61345        |
|                      | Type IV – (+95' to 100')      |                       |                       |             | 61346        |

### ESTIMATED QUANTITIES SHEET BID ITEMS – BRIDGE SUPERSTRUCTURE

PART 2  
DATE: 17Aug2016  
SHEET 5 of 9  
FILE NO. 03.06-5

## LIST OF BID ITEMS – BRIDGE SUPERSTRUCTURE

| REFER TO<br>FOOTNOTE | ITEM                        | VDOT<br>SPECS<br>REF. | QTY.<br>ROUND-<br>OFF | PAY<br>UNIT | ITEM<br>CODE |
|----------------------|-----------------------------|-----------------------|-----------------------|-------------|--------------|
|                      | Prestressed Concrete I Beam |                       |                       |             |              |
|                      | Type V – (85' to 90')       | 405                   | 1                     | EA          | 61400        |
|                      | Type V – (+90' to 95')      |                       |                       |             | 61401        |
|                      | Type V – (+95' to 100')     |                       |                       |             | 61402        |
|                      | Type V – (+100' to 105')    |                       |                       |             | 61403        |
|                      | Type V – (+105' to 110')    |                       |                       |             | 61404        |
|                      | Type V – (+110' to 115')    |                       |                       |             | 61405        |
|                      | Type V – (+115' to 120')    |                       |                       |             | 61406        |
|                      | Type VI – (105' to 110')    | 405                   | 1                     | EA          | 61410        |
|                      | Type VI – (+110' to 115')   |                       |                       |             | 61411        |
|                      | Type VI – (+115' to 120')   |                       |                       |             | 61412        |
|                      | Type VI – (+120' to 125')   |                       |                       |             | 61413        |
|                      | Type VI – (+125' to 130')   |                       |                       |             | 61414        |
|                      | Type VI – (+130' to 135')   |                       |                       |             | 61415        |
|                      | Type VI – (+135' to 140')   |                       |                       |             | 61416        |
|                      | Prestressed Concrete Slab   |                       |                       |             |              |
|                      | 3' x 15" x (+20' – 25')     | 405                   | 1                     | EA          | 61121        |
|                      | 3' x 18" x (+20' – 25')     |                       |                       |             | 61123        |
|                      | 3' x 21" x (+20' – 25')     |                       |                       |             | 61124        |
|                      | 3' x 15" x (+25' – 30')     | 405                   | 1                     | EA          | 61126        |
|                      | 3' x 18" x (+25' – 30')     |                       |                       |             | 61128        |
|                      | 3' x 21" x (+25' – 30')     |                       |                       |             | 61129        |
|                      | 3' x 15" x (+30' – 35')     | 405                   | 1                     | EA          | 61130        |
|                      | 3' x 18" x (+30' – 35')     |                       |                       |             | 61132        |
|                      | 3' x 21" x (+30' – 35')     |                       |                       |             | 61133        |
|                      | 3' x 15" x (+35' – 40')     | 405                   | 1                     | EA          | 61135        |
|                      | 3' x 18" x (+35' – 40')     |                       |                       |             | 61137        |
|                      | 3' x 21" x (+35' – 40')     |                       |                       |             | 61138        |
|                      | 3' x 18" x (+40' – 45')     | 405                   | 1                     | EA          | 61141        |
|                      | 3' x 21" x (+40' – 45')     |                       |                       |             | 61142        |
|                      | 3' x 21" x (+45' – 50')     |                       |                       |             | 61145        |
|                      | 3' x 21" x (+50' – 55')     |                       |                       |             | 61150        |
|                      | 4' x 15" x (20' – 25')      | 405                   | 1                     | EA          | 61171        |
|                      | 4' x 15" x (+25' – 30')     |                       |                       |             | 61176        |
|                      | 4' x 18" x (+25' – 30')     |                       |                       |             | 61177        |
|                      | 4' x 15" x (+30' – 35')     |                       |                       |             | 61180        |
|                      | 4' x 18" x (+30' – 35')     |                       |                       |             | 61181        |
|                      | 4' x 21" x (+30' – 35')     |                       |                       |             | 61182        |
|                      | 4' x 15" x (+35' – 40')     | 405                   | 1                     | EA          | 61185        |
|                      | 4' x 18" x (+35' – 40')     |                       |                       |             | 61186        |
|                      | 4' x 21" x (+35' – 40')     |                       |                       |             | 61187        |
|                      | 4' x 18" x (+40' – 45')     |                       |                       |             | 61190        |
|                      | 4' x 21" x (+40' – 45')     |                       |                       |             | 61191        |
|                      | 4' x 21" x (+45' – 50')     |                       |                       |             | 61195        |

### ESTIMATED QUANTITIES SHEET BID ITEMS – BRIDGE SUPERSTRUCTURE

PART 2  
DATE: 17Aug2016  
SHEET 6 of 9  
FILE NO. 03.06-6

## LIST OF BID ITEMS – BRIDGE SUPERSTRUCTURE

| REFER TO<br>FOOTNOTE | ITEM                           | VDOT<br>SPECS<br>REF. | QTY.<br>ROUND-<br>OFF | PAY<br>UNIT | ITEM<br>CODE |
|----------------------|--------------------------------|-----------------------|-----------------------|-------------|--------------|
|                      | Prestressed Concrete T Beam    |                       |                       |             |              |
|                      | 2'-0" x (30' to 35')           | 405                   | 1                     | EA          | 61600        |
|                      | 2'-2" x (+35' to 40')          |                       |                       |             | 61601        |
|                      | 2'-4" x (+40' to 43')          |                       |                       |             | 61602        |
|                      | 2'-6" x (+43' to 46')          |                       |                       |             | 61603        |
|                      | 2'-8" x (+46' to 50')          |                       |                       |             | 61604        |
|                      | 2'-10" x (+50' to 53')         |                       |                       |             | 61605        |
|                      | 3'-0" x (+53' to 56')          |                       |                       |             | 61606        |
|                      | 3'-2" x (+56' to 60')          |                       |                       |             | 61607        |
|                      | 3'-4" x (+60' to 63')          |                       |                       |             | 61608        |
|                      | 3'-6" x (+63' to 66')          |                       |                       |             | 61609        |
| ⊗                    | Railing, BR27C                 |                       |                       |             |              |
|                      | 1 Rail                         | 410                   | 1                     | LF          | 62041        |
|                      | 3 Rails                        |                       |                       |             | 62043        |
|                      | 4 Rails                        |                       |                       |             | 62044        |
| ⊗                    | Railing, BR27D                 |                       |                       |             |              |
|                      | 2 Rails                        | 410                   | 1                     | LF          | 62045        |
|                      | 3 Rails                        |                       |                       |             | 62046        |
|                      | 4 Rails                        |                       |                       |             | 62047        |
| ⊗                    | Railing, California ST-20S     | 410                   | 1                     | LF          | 62081        |
| ⊗                    | Railing, CPSR                  |                       |                       |             |              |
|                      | 2 Rails                        | 410                   | 1                     | LF          | 62034        |
|                      | 3 Rails                        |                       |                       |             | 62035        |
| ⊗                    | Railing, GC 8000               | 410                   | 1                     | LF          | 62089        |
| ⊗                    | Railing, Illinois Steel        | 410                   | 1                     | LF          | 62080        |
| ⊗                    | Railing, Kansas Corral         |                       |                       |             |              |
|                      | 27", w/curb                    | 410                   | 1                     | LF          | 62030        |
|                      | 27", w/out curb                |                       |                       |             | 62031        |
|                      | 32", w/curb                    |                       |                       |             | 62032        |
|                      | 32", w/out curb                |                       |                       |             | 62033        |
| ⊗                    | Railing, Massachusetts S3, 42" | 410                   | 1                     | LF          | 62082        |
| ⊗                    | Railing, Massachusetts S3, 54" | 410                   | 1                     | LF          | 62083        |
| ⊗                    | Railing, 31" MGS               | 410                   | 1                     | LF          | 60516        |
| ⊗                    | Railing, SBD01d                | 410                   | 1                     | LF          | 62088        |
| ⊗                    | Railing, Texas C411, 42"       | 410                   | 1                     | LF          | 62084        |
| ⊗                    | Railing, Texas C411, 54"       | 410                   | 1                     | LF          | 62085        |

### ESTIMATED QUANTITIES SHEET BID ITEMS – BRIDGE SUPERSTRUCTURE

PART 2  
DATE: 31Oct2019  
SHEET 7 of 9  
FILE NO. 03.06-7

## LIST OF BID ITEMS – BRIDGE SUPERSTRUCTURE

| REFER TO<br>FOOTNOTE | ITEM                                      | VDOT<br>SPECS<br>REF. | QTY.<br>ROUND-<br>OFF | PAY<br>UNIT | ITEM<br>CODE |
|----------------------|---|-----------------------|-----------------------|-------------|--------------|
| ⊗                    | Railing, Texas T-6                        | 410                   | 1                     | LF          | 62016        |
|                      | Reinforcing Steel                         | 406                   | 10                    | LB          | 61700        |
| ⊗                    | Reinf. Steel Bridge Approach Slab         | 316                   | 10                    | LB          | 60452        |
|                      | Shear Keys                                | ATTD, 404             | 1                     | CF          | 61010        |
| ⑭                    | Shotcrete, Type A                         | 412                   | 1                     | CF          | 60514        |
|                      | Steel Grid Floor                          | 409                   | 1                     | SF          | 61990        |
|                      | Steel Sheet Piling                        | 402                   | 1                     | SF          | 60200        |
| ⊗                    | Structure Excavation                      | 401                   | 1                     | CY          | 60120        |
| ④                    | Structural Steel Plate Girder             |                       |                       |             |              |
|                      | ASTM A709 Grade 36                        | 407                   | 100                   | LB          | 61810        |
|                      | ASTM A709 Grade 50                        |                       |                       |             | 61811        |
|                      | ASTM A709 Grade 50W                       |                       |                       |             | 61812        |
|                      | ASTM A709 Grade HPS50W                    |                       |                       |             | 61813        |
|                      | ASTM A709 Grade HPS70W                    |                       |                       |             | 61814        |
| ④                    | Structural Steel Rolled Beam              |                       |                       |             |              |
|                      | ASTM A709 Grade 36                        | 407                   | 100                   | LB          | 61820        |
|                      | ASTM A709 Grade 50                        |                       |                       |             | 61821        |
|                      | ASTM A709 Grade 50W                       |                       |                       |             | 61822        |
|                      | Temporary Sheet Piling                    | 402                   | 1                     | SF          | 60210        |
| ⊗                    | Tooth Expansion Joint Assembly            |                       | 1                     | LF          | 62400        |
|                      | 1 1/2"                                    | 423                   |                       |             | 62401        |
|                      | 1 3/4"                                    |                       |                       |             | 62402        |
|                      | 2"  |                       |                       |             | 62403        |
|                      | 2 1/4"                                    |                       |                       |             | 62404        |
|                      | 2 1/2"                                    |                       |                       |             | 62405        |
|                      | 2 3/4"                                    |                       |                       |             | 62406        |
|                      | 3"  |                       |                       |             |              |
|                      | Traffic Barrier Service                   | 512                   | 1                     | LF          | 62115        |
|                      | Concrete Single Face Parapet              |                       |                       |             |              |
|                      | Traffic Barrier Service                   | 512                   | 1                     | LF          | 62116        |
|                      | Concrete Double Face Parapet              |                       |                       |             |              |
|                      | Virginia Adjacent Member Conn. Block-Outs | ATTD, 404             | 1                     | CF          | 61020        |

### ESTIMATED QUANTITIES SHEET BID ITEMS – BRIDGE SUPERSTRUCTURE

PART 2  
DATE: 27Jul2017  
SHEET 8 of 9  
FILE NO. 03.06-8



**LIST OF BID ITEMS – BRIDGE SUPERSTRUCTURE**

| <b>REFER TO<br/>FOOTNOTE</b> | <b>ITEM</b>                                     | <b>VDOT<br/>SPECS<br/>REF.</b> | <b>QTY.<br/>ROUND-<br/>OFF</b> | <b>PAY<br/>UNIT</b> | <b>ITEM<br/>CODE</b> |
|------------------------------|---|--------------------------------|--------------------------------|---------------------|----------------------|
| ⊗                            | Waterproofing – Epoxy Resin<br>Type EP-3B/EP-3T | 416                            | 1                              | SY                  | 62202                |
|                              | Welded Wire Fabric                              | 406                            | 10                             | LB                  | 61710                |

**ESTIMATED QUANTITIES SHEET  
BID ITEMS – BRIDGE SUPERSTRUCTURE**

PART 2  
DATE: 31Oct2019  
SHEET 9 of 9  
FILE NO. 03.06-9

## LIST OF BID ITEMS – BRIDGE SUBSTRUCTURE

| REFER TO<br>FOOTNOTE | ITEM   | VDOT<br>SPECS<br>REF. | QTY.<br>ROUND-<br>OFF | PAY<br>UNIT | ITEM<br>CODE   |
|----------------------|--|-----------------------|-----------------------|-------------|----------------|
| ⊗                    | Architectural Treatment  | ATTD                  | 1                     | SY          | 65004          |
| ⑧                    | Cofferdams   | 401                   | 1                     | EA          | 66120          |
| ⊗                    | Concrete Block Slope Protection                                  | 415                   | 1                     | SY          | 66720          |
| ⑰                    | Concrete Class A3  | 404                   | 0.1                   | CY          | 65013          |
| ⑰                    | Concrete Class A4  | 404                   | 0.1                   | CY          | 65014          |
| ⑰                    | Concrete Class B2  | 404                   | 0.1                   | CY          | 65022          |
| ⑰                    | Concrete Class C1  | 404                   | 0.1                   | CY          | 65031          |
| ⑰                    | Concrete Class T3  | 404                   | 0.1                   | CY          | 65093          |
| ⊗                    | Concrete Parapet   | 410                   | 1                     | LF          | 65700          |
| ⊗ ②                  | Concrete Parapet, 42"  | 410                   | 1                     | LF          | 65704          |
|                      | Concrete Slab Riprap   | 414                   | 1                     | SY          | 66706          |
| ⊗                    | Concrete Slab Slope Protection 4"<br>6"                          | 415                   | 1                     | SY          | 66740<br>66750 |
| ⑮                    | Concrete Surface Color Coating<br>(B or Virginia STR. NO.)       | ATTD                  | ---                   | LS          | 65010          |
|                      | Corrosion Resistant Reinforcing Steel,<br>Class I                | 406                   | 10                    | LB          | 65211          |
|                      | Corrosion Resistant Reinforcing Steel,<br>Class II               | 406                   | 10                    | LB          | 65212          |
|                      | Corrosion Resistant Reinforcing Steel,<br>Class III              | 406                   | 10                    | LB          | 65213          |
| ⊗ ①                  | Dampproofing   | 417                   | 1                     | SY          | 66810          |
|                      | Driving Test for 12" Prestr. Concrete Pile                       | 403                   | 1                     | LF          | 64808          |
|                      | 14"  |                       |                       |             | 64818          |
|                      | 18"  |                       |                       |             | 64828          |
|                      | 20"  |                       |                       |             | 64848          |
|                      | 24"  |                       |                       |             | 64868          |
|                      | Driving Test for PSC Stainless Steel Strand Piles,<br>20"<br>24" | 403                   | 1                     | LF          | 64850<br>64851 |

### ESTIMATED QUANTITIES SHEET BID ITEMS – BRIDGE SUBSTRUCTURE

PART 2  
DATE: 31Oct2019  
SHEET 1 of 5  
FILE NO. 03.07-1

## LIST OF BID ITEMS – BRIDGE SUBSTRUCTURE

| REFER TO<br>FOOTNOTE | ITEM   | VDOT<br>SPECS<br>REF. | QTY.<br>ROUND-<br>OFF | PAY<br>UNIT | ITEM<br>CODE                              |
|----------------------|--|-----------------------|-----------------------|-------------|---|
|                      | Driving Test for 20" PSC CFRP Strand Pile<br>24"                       | 403                   | 1                     | LF          | 64870<br>64871                            |
|                      | Driving Test for 10" Steel Pile<br>12"<br>14"                          | 403                   | 1                     | LF          | 64759<br>64768<br>64778                   |
|                      | Driving Test for Timber Pile   | 403                   | 1                     | EA          | 64751                                     |
| ⑩                    | Dry Riprap Cl. A1 20"  | 414                   | 1                     | SY<br>Ton   | 66123<br>66124                            |
|                      | Cl. I 26"  | 414                   | 1                     | SY<br>Ton   | 66126<br>66127                            |
|                      | Cl. II 38"   | 414                   | 1                     | SY<br>Ton   | 66238<br>66239                            |
|                      | Cl. III 53"  | 414                   | 1                     | SY<br>Ton   | 66353<br>66354                            |
| ⑪                    | Dumped Riprap Typ. I 5'  | 414                   | 1                     | SY<br>Ton   | 66615<br>66616                            |
|                      | Typ. II 8'   | 414                   | 1                     | SY<br>Ton   | 66628<br>66629                            |
|                      | Dynamic Pile Test  | 403                   | 1                     | EA          | 64101                                     |
|                      | Dynamic Pile Test (End Bearing Piles)                                  | ATTD, 403             | 1                     | EA          | 64102                                     |
|                      | Elastic Inclusion  | ATTD                  | 1                     | CY          | 64021                                     |
|                      | Geocomposite Wall Drain  | 401                   | 1                     | SY          | 64032                                     |
| ⑫                    | Grouted Riprap 18"   | 414                   | 1                     | SY<br>Ton   | 66418<br>66419                            |
|                      | 24"  | 414                   | 1                     | SY<br>Ton   | 66424<br>66425                            |
|                      | 30"  | 414                   | 1                     | SY<br>Ton   | 66430<br>66431                            |
|                      | Loading Test for 12" Prestr. Concrete Pile<br>14"<br>18"<br>20"<br>24" | 403                   | 1                     | EA          | 64807<br>64817<br>64837<br>64847<br>64867 |
|                      | Loading Test for 10" Steel Pile<br>12"<br>14"                          | 403                   | 1                     | EA          | 64757<br>64767<br>64777                   |

### ESTIMATED QUANTITIES SHEET BID ITEMS – BRIDGE SUBSTRUCTURE

PART 2  
DATE: 30Apr2020  
SHEET 2 of 5  
FILE NO. 03.07-2

## LIST OF BID ITEMS – BRIDGE SUBSTRUCTURE

| REFER TO<br>FOOTNOTE | ITEM  | VDOT<br>SPECS<br>REF. | QTY.<br>ROUND-<br>OFF | PAY<br>UNIT | ITEM<br>CODE |
|----------------------|---|-----------------------|-----------------------|-------------|--------------|
|                      | Loading Test for Timber Pile                | 403                   | 1                     | EA          | 64750        |
| (17)                 | Lumber, Treated                             | 418                   | 0.1                   | MFBM        | 66900        |
| (17)                 | Lumber, Untreated                           | 418                   | 0.1                   | MFBM        | 66910        |
|                      | Mortared Riprap 18"                         | 414                   | 1                     | SY          | 66318        |
|                      | 24"   |                       |                       |             | 66324        |
|                      | 30"   |                       |                       |             | 66330        |
|                      | Pile Point for 10" Steel Pile               | 403                   | 1                     | EA          | 64755        |
|                      | 12"   |                       |                       |             | 64765        |
|                      | 14"   |                       |                       |             | 64775        |
|                      | Pier Protection System, 42"                 | PLAN                  | 1                     | LF          | 65708        |
|                      | 54"   |                       |                       |             | 65710        |
|                      | Pile Point for Timber Pile                  | 403                   | 1                     | EA          | 64745        |
| (3)                  | Pipe Underdrain 6"                          | 401                   | 1                     | LF          | 64036        |
|                      | Pneumatically Applied Mortar                | 412                   | 1                     | SF          | 65102        |
| ⊗ (3)                | Porous Backfill                             | 401                   | 1                     | CY          | 64030        |
|                      | Prestr. Conc. Carbon Steel Strand Piles,    |                       |                       |             |              |
|                      | 12"   | 403                   | 1                     | LF          | 64412        |
|                      | 14"   |                       |                       |             | 64414        |
|                      | 18"   |                       |                       |             | 64418        |
|                      | 20"   |                       |                       |             | 64420        |
|                      | 24"   |                       |                       |             | 64424        |
|                      | Prestr. Conc. Stainless Steel Strand Piles, |                       |                       |             |              |
|                      | 12"   | ATTD, 403             | 1                     | LF          | 64512        |
|                      | 14"   |                       |                       |             | 64514        |
|                      | 18"   |                       |                       |             | 64518        |
|                      | 20"   |                       |                       |             | 64520        |
|                      | 24"   |                       |                       |             | 64524        |
|                      | Prestressed Conc. CFRP Strand Piles,        |                       |                       |             |              |
|                      | 12"   | ATTD, 403             | 1                     | LF          | 64612        |
|                      | 14"   |                       |                       |             | 64614        |
|                      | 18"   |                       |                       |             | 64618        |
|                      | 20"   |                       |                       |             | 64620        |
|                      | 24"   |                       |                       |             | 64624        |

### ESTIMATED QUANTITIES SHEET BID ITEMS – BRIDGE SUBSTRUCTURE

PART 2  
DATE: 08Aug2018  
SHEET 3 of 5  
FILE NO. 03.07-3

**LIST OF BID ITEMS – BRIDGE SUBSTRUCTURE**

| REFER TO FOOTNOTE | ITEM                            | VDOT SPECS REF. | QTY. ROUND-OFF | PAY UNIT | ITEM CODE |
|-------------------|---------------------------------|-----------------|----------------|----------|-----------|
| ⊗                 | Railing, BR27C                  | 410             | 1              | LF       | 65824     |
|                   | 1 Rail                          |                 |                |          | 65826     |
|                   | 3 Rails                         |                 |                |          | 65827     |
| ⊗                 | Railing, BR27D                  | 410             | 1              | LF       | 65828     |
|                   | 2 Rails                         |                 |                |          | 65829     |
|                   | 3 Rails                         |                 |                |          | 65830     |
| ⊗                 | Railing, CPSR                   | 410             | 1              | LF       | 65831     |
|                   | 2 Rails                         |                 |                |          | 65832     |
| ⊗                 | Railing, Kansas Corral          | 410             | 1              | LF       | 65820     |
|                   | 27", w/curb                     |                 |                |          | 65821     |
|                   | 27", w/out curb                 |                 |                |          | 65822     |
|                   | 32", w/curb                     |                 |                |          | 65823     |
|                   | Reinforcing Steel               | 406             | 10             | LB       | 65200     |
| ⑩                 | Select Backfill (Abutment Zone) | 401             | 1              | TON      | 64015     |
|                   | Sheet Piles, Concrete           | 402             | 1              | SF       | 64042     |
|                   | Steel                           |                 |                |          | 64040     |
|                   | Treated Timber                  |                 |                |          | 64046     |
|                   | Untreated Timber                |                 |                |          | 64044     |
| ⑭                 | Shotcrete, Type B               | 412             | 1              | CF       | 65104     |
|                   | Steel Piles 10"                 | 403             | 1              | LF       | 64110     |
|                   | 12"                             |                 |                |          | 64112     |
|                   | 14"                             |                 |                |          | 64114     |
| ⊗                 | Structure Excavation            | 401             | 1              | CY       | 64011     |
|                   | Temporary Causeway              | PLAN            | ---            | LS       | 66115     |
|                   | Temporary Sheet Piling          | 402             | 1              | SF       | 64045     |
|                   | Treated Timber Piles 10"        | 403             | 1              | LF       | 64080     |
|                   | 12"                             |                 |                |          | 64082     |
|                   | Welded Wire Fabric              | 406             | 10             | LB       | 65210     |

**ESTIMATED QUANTITIES SHEET  
 BID ITEMS – BRIDGE SUBSTRUCTURE**

PART 2  
 DATE: 08Aug2018  
 SHEET 4 of 5  
 FILE NO. 03.07-4

**LIST OF BID ITEMS – BRIDGE INCIDENTALS**

| <b>REFER TO FOOTNOTE</b> | <b>ITEM</b>   | <b>VDOT SPECS REF.</b> | <b>QTY. ROUND-OFF</b> | <b>PAY UNIT</b> | <b>ITEM CODE</b>        |
|--------------------------|---|------------------------|-----------------------|-----------------|-------------------------|
| ⊗                        | Architectural Treatment   | ATTD                   | 1                     | SY              | 67051                   |
| ⑮                        | Communication Lines Conduit System<br>(B or Virginia STR. NO.)      | PLAN                   | ---                   | LS              | 67280                   |
| ⑮                        | Concrete Surface Color Coating<br>(B or Virginia STR. NO.)          | ATTD                   | ---                   | LS              | 67053                   |
| ① ⑮                      | Conduit System (B or Virginia STR. NO.)                             | 419                    | ---                   | LS              | 67260                   |
| ①                        | Deck Drainage System  | PLAN                   | ---                   | LS              | 67400                   |
| ⑮                        | Dismantle and Remove Existing Structure<br>(B or Virginia STR. NO.) | 413                    | ---                   | LS              | 67900                   |
| ⑮                        | Gas Main (B or Virginia STR. NO.)                                   | PLAN                   | ---                   | LS              | 67500                   |
| ⑮                        | Lighting System (B or Virginia STR. NO.)                            | 419                    | ---                   | LS              | 67270                   |
|                          | Navigation Lights   | 422                    | ---                   | LS              | 67450                   |
| ⑮                        | NBIS Access, Under Bridge<br>(B or Virginia STR. NO.)               | 430                    | 0.5                   | Day             | 67910                   |
| ⊗                        | Pedestrian Fence 6'<br>8'<br>10'                                    | 507                    | 1                     | LF              | 67086<br>67088<br>67089 |
|                          | Traffic Barrier Service Concrete                                    | 512                    | 1                     | LF              | 67110                   |
| ⑮                        | Water Line (B or Virginia STR. NO.)                                 | PLAN                   | ---                   | LS              | 67350                   |

**ESTIMATED QUANTITIES SHEET  
BID ITEMS – BRIDGE INCIDENTALS**

PART 2  
DATE: 31Oct2019  
SHEET 1 of 1  
FILE NO. 03.08

**LIST OF BID ITEMS – STRUCTURAL WIDENING OR REPAIR SUPERSTRUCTURE**

| REFER TO FOOTNOTE | ITEM   | VDOT SPECS REF.                   | QTY. ROUND-OFF | PAY UNIT | ITEM CODE                                 |
|-------------------|--|-----------------------------------|----------------|----------|---|
| ①                 | Adhesive Anchors   | ATTD                              | 1              | EA       | 68060                                     |
| ①                 | Adhesive Based Joint Sealer (Class I)                      | 1" 420<br>1½"<br>2"<br>2½"<br>3"  | 1              | LF       | 68527<br>68528<br>68529<br>68530<br>68531 |
| ①                 | Adhesive Based Joint Sealer (Class II)                     | 2" 420<br>3"<br>4½"<br>5½"        | 1              | LF       | 68533<br>68534<br>68535<br>68536          |
| ①                 | Adhesive Based Joint Sealer (Class III)                    | ½" 420<br>1"<br>2"<br>3"<br>4"    | 1              | LF       | 68538<br>68539<br>68540<br>68541<br>68542 |
|                   | Anchor Bolt Replacement                                    | PLAN, 412                         | 1              | EA       | 68166                                     |
| ⑱                 | Asphalt Concrete   |                                   |                |          |   |
|                   | Back Wall Reconstruction                                   | 412                               | 1              | LF       | 68578                                     |
|                   | Back Wall Reconstruction (HES)                             | 412                               | 1              | LF       | 68579                                     |
|                   | Barrier Service Concrete<br>Single Face Parapet (NCHRP350) | 512                               | 1              | LF       | 68764                                     |
|                   | Beam End Repair  | 412                               | 1              | EA       | 68580                                     |
|                   | Bearing Device   | PLAN, 408                         | 100            | LB       | 68164                                     |
| ⊗                 | Bridge Deck Grooving                                       | 404                               | 1              | SY       | 68090                                     |
|                   | Bridge Deck Waterproofing Membr.                           | Type I 429<br>Type II<br>Type III | 1              | SY       | 68401<br>68402<br>68403                   |
| ⊗                 | Bridge Median Barrier, Steel                               | 410                               | 1              | LF       | 68012                                     |
|                   | Clean and Reseal Expansion Joint                           | ATTD, 404                         | 1              | LF       | 68574                                     |
| ⑰                 | Concrete Class A4  | 404                               | 0.1            | CY       | 68040                                     |

**ESTIMATED QUANTITIES SHEET  
 BID ITEMS – STRUCTURAL WIDENING OR REPAIR  
 SUPERSTRUCTURE**

PART 2  
 DATE: 17Aug2016  
 SHEET 1 of 8  
 FILE NO. 03.09-1

## LIST OF BID ITEMS – STRUCTURAL WIDENING OR REPAIR SUPERSTRUCTURE

| REFER TO FOOTNOTE | ITEM   | VDOT SPECS REF. | QTY. ROUND-OFF | PAY UNIT | ITEM CODE |
|-------------------|--|-----------------|----------------|----------|-----------|
| ⑰                 | Concrete Class A4 (Lightweight)                    | 404             | 0.1            | CY       | 68041     |
| ⊗ ⑰               | Concrete Class A4 Bridge Approach Slab             | 316             | 0.1            | CY       | 68265     |
| ⑰                 | Concrete Low Shrinkage Class A4 Mod.               | 404             | 0.1            | CY       | 68043     |
| ⑰                 | Concrete Low Shrinkage Class A4 Mod. (Lightweight) | 404             | 0.1            | CY       | 68044     |
| ⊗ ②               | Concrete Parapet                                   | 410             | 1              | LF       | 68010     |
| ⊗ ②               | Concrete Parapet, 42"                              | 410             | 1              | LF       | 68047     |
|                   | Concrete Superstructure Surface Repair             | 412             | 1              | SY       | 68600     |
|                   | Concrete Surface Color Coating                     | 412             | 1              | SY       | 68190     |
|                   | Concrete Surface Penetrant Sealer                  | 428             | 1              | SY       | 68676     |
| ⊗ ⑨               | Corrosion Resistant Reinforcing Steel, Class I     | 412, 406        | 10             | LB       | 68091     |
| ⊗ ⑨               | Corrosion Resistant Reinforcing Steel, Class II    | 412, 406        | 10             | LB       | 68092     |
| ⊗ ⑨               | Corrosion Resistant Reinforcing Steel, Class III   | 412, 406        | 10             | LB       | 68093     |
| ⊗                 | Cover Depth Survey                                 | 404             | 1              | SY       | 68085     |
| ⑭                 | Crack Repair Type A                                | 412             | 1              | LF       | 68170     |
|                   | B  |                 |                |          | 68172     |
|                   | C  |                 |                |          | 68174     |
|                   | D  |                 |                |          | 68176     |
| ⑭                 | Crack Repair Type C                                | 412             | 1              | SY       | 68175     |
|                   | Crack Repair Drilling Crack Arrest Holes           | 426             | 1              | EA       | 68241     |
|                   |  |                 |                | IN       | 68242     |
|                   | Drilling Cold Expanded Holes                       | 426             | 1              | EA       | 68243     |
|                   |  |                 |                | IN       | 68244     |
|                   | Welding  | 426             | 1              | EA       | 68245     |
|                   |  |                 |                | IN       | 68246     |
|                   | Deck Drain Assembly Replacement                    | ATTD            | 1              | EA       | 68158     |
|                   | Deck Slab Closure                                  | 412             | 1              | SY       | 68339     |

### ESTIMATED QUANTITIES SHEET BID ITEMS – STRUCTURAL WIDENING OR REPAIR SUPERSTRUCTURE

PART 2  
 DATE: 17Aug2016  
 SHEET 2 of 8  
 FILE NO. 03.09-2



**LIST OF BID ITEMS – STRUCTURAL WIDENING OR REPAIR SUPERSTRUCTURE**

| REFER TO FOOTNOTE | ITEM  | VDOT SPECS REF. | QTY. ROUND-OFF | PAY UNIT | ITEM CODE |
|-------------------|---|-----------------|----------------|----------|-----------|
|                   | Diaphragm Replacement   | ATTD            | 1              | EA       | 68155     |
| (15)              | Disposal of Material (B or Virginia STR. NO.)                           | 411             | ---            | LS       | 68490     |
|                   | Elastomeric Concrete  | ATTD            | 1              | CF       | 68548     |
| ⊗                 | Elastomeric Expansion Dam   | 421             | 1              | LF       | 68550     |
|                   | 0" – 2"   |                 |                |          | 68552     |
|                   | 2+ – 3"   |                 |                |          | 68553     |
|                   | 3+ – 4"   |                 |                |          | 68554     |
|                   | 4+ – 5"   |                 |                |          |           |
|                   | Embedded Galvanic Anodes  | 412             | 1              | EA       | 68180     |
| (15)              | Environmental and Worker Protection (B or Virginia STR. NO.)            | 413             | ---            | LS       | 68476     |
| (15)              | Environmental Protection and Health and Safety (B or Virginia STR. NO.) | 411             | ---            | LS       | 68474     |
|                   | Epoxy Overlay   | 431             | 1              | SY       | 68675     |
|                   | Epoxy-mortar Patching   | 412             | 1              | GAL      | 68340     |
| (15)              | Erection of Structural Steel (Type)                                     | 407             | ---            | LS       | 68128     |
|                   | Expansion Joint Preparation   | 412             | 1              | LF       | 68575     |
|                   | Expansion Joint Reconstruction  | 412             | 1              | LF       | 68572     |
|                   | Expansion Joint Reconstruction (HES)                                    | 412             | 1              | LF       | 68573     |
|                   | Expansion Joint Removal   | 412             | 1              | LF       | 68570     |
| (15)              | Fabrication of Structural Steel (Type)                                  | 407             | ---            | LS       | 68129     |
|                   | Fiber Reinforced Polymer Wraps  | 412             | 1              | SF       | 68191     |
|                   | Field Welding – Fillet Weld   | 426             | 1              | LF       | 68281     |
|                   | 3/16"   |                 |                |          | 68282     |
|                   | 1/4"  |                 |                |          | 68283     |
|                   | 5/16"   |                 |                |          | 68284     |
|                   | 3/8"  |                 |                |          | 68285     |
|                   | 1/2"  |                 |                |          |           |
|                   | Field Welding – Full Pen. Gr. Weld                                      | 426             | 1              | LF       | 68287     |
|                   | < 1"  |                 |                |          | 68288     |
|                   | 1" - < 2"   |                 |                |          | 68289     |
|                   | 2" – 2 1/2"   |                 |                |          |           |

**ESTIMATED QUANTITIES SHEET  
 BID ITEMS – STRUCTURAL WIDENING OR REPAIR  
 SUPERSTRUCTURE**

PART 2  
 DATE: 31Oct2019  
 SHEET 3 of 8  
 FILE NO. 03.09-3

## LIST OF BID ITEMS – STRUCTURAL WIDENING OR REPAIR SUPERSTRUCTURE

| REFER TO<br>FOOTNOTE | ITEM   | VDOT<br>SPECS<br>REF. | QTY.<br>ROUND-<br>OFF | PAY<br>UNIT | ITEM<br>CODE                     |
|----------------------|--|-----------------------|-----------------------|-------------|----------------------------------|
|                      | Furnish Asphalt Plug Joint   | 424                   | 1                     | CF          | 68168                            |
| (17)                 | Furnish Class A4 Bridge Deck Concrete<br>(4" – 4 1/2")                   | 425                   | 0.1                   | CY          | 68622                            |
| (17)                 | Furnish High Early Strength Latex Modified<br>Concrete (2 1/4" – 2 3/4") | 425                   | 0.1                   | CY          | 68613                            |
| (17)                 | Furnish Latex Modified Concrete (1 1/4"-1 3/4")<br>(2 1/4" – 2 3/4")     | 425                   | 0.1                   | CY          | 68605<br>68617                   |
| (17)                 | Furnish Silica Fume Concrete (1 1/4" – 1 3/4")                           | 425                   | 0.1                   | CY          | 68606                            |
| (17)                 | Furnish Very Early Strength Latex Modified<br>Concrete (2 1/4" – 2 3/4") | 425                   | 0.1                   | CY          | 68614                            |
|                      | Grinding Minor Defect  | 426                   | 1                     | EA          | 68198                            |
|                      | Guardrail, Thrie Beam  | PLAN, 410             | 1                     | LF          | 68019                            |
|                      | H.E.S. Patching Type A<br>Type B<br>Type C                               | 412                   | 1                     | SY          | 68312<br>68322<br>68332          |
|                      | Jacking and Blocking Beam(s)   | 412, 426              | 1                     | EA          | 68590                            |
| (17)                 | Lumber, Treated  | 418                   | 0.1                   | MFBM        | 68500                            |
| (17)                 | Lumber, Untreated  | 418                   | 0.1                   | MFBM        | 68510                            |
| (15)                 | Material Disposal (B or Virginia STR. NO.)                               | 413                   | ---                   | LS          | 68492                            |
|                      | Membrane Reinforcement   | 429                   | 1                     | LF          | 68196                            |
|                      | Modify Existing Fixed Bearing  | 426                   | 1                     | EA          | 68195                            |
|                      | Modify Existing Rocker Expansion Bearing                                 | 426                   | 1                     | EA          | 68194                            |
|                      | Modify Steel Beam/Girder End   | 426                   | 1                     | EA          | 68201                            |
| (1) (15)             | Painting Timber Structures<br>(B or Virginia STR. NO.)                   | 418                   | ---                   | LS          | 68512                            |
| (14)                 | Parapet Closure Type A<br>Type B<br>Type C<br>Type D                     | 412                   | 1                     | EA          | 68225<br>68226<br>68227<br>68228 |

### ESTIMATED QUANTITIES SHEET BID ITEMS – STRUCTURAL WIDENING OR REPAIR SUPERSTRUCTURE

PART 2  
 DATE: 31Oct2019  
 SHEET 4 of 8  
 FILE NO. 03.09-4

## LIST OF BID ITEMS – STRUCTURAL WIDENING OR REPAIR SUPERSTRUCTURE

| REFER TO<br>FOOTNOTE | ITEM   | VDOT<br>SPECS<br>REF. | QTY.<br>ROUND-<br>OFF | PAY<br>UNIT | ITEM<br>CODE |
|----------------------|--|-----------------------|-----------------------|-------------|--------------|
|                      | Partial Beam/Girder Replacement                                      | 426                   | 10                    | LB          | 68202        |
|                      | Patching Type A  | 412                   | 1                     | SY          | 68308        |
|                      | Type B   |                       |                       |             | 68320        |
|                      | Type C   |                       |                       |             | 68330        |
|                      | Place Asphalt Plug Joint   | 424                   | 1                     | LF          | 68169        |
|                      | Place Class A4 Bridge Deck Concr. Overlay                            | 425                   | 1                     | SY          | 68609        |
|                      | Place High Early Strength Latex Modified<br>Concrete Overlay         | 425                   | 1                     | SY          | 68615        |
|                      | Place Latex Modified Concrete Overlay                                | 425                   | 1                     | SY          | 68607        |
|                      | Place Silica Fume Concrete Overlay                                   | 425                   | 1                     | SY          | 68608        |
|                      | Place Very Early Strength Latex Modified<br>Concrete Overlay         | 425                   | 1                     | SY          | 68616        |
| (15)                 | Prepare and Spot Coat Existing Structure<br>(B or Virginia STR. NO.) | 411                   | 1                     | SF          | 68455        |
| (15)                 | Prepare and Overcoat Existing Structure<br>(B or Virginia STR. NO.)  | 411                   | ---                   | LS          | 68470        |
| ⊗                    | Railing, BR27C   |                       |                       |             |              |
|                      | 1 Rail   | 410                   | 1                     | LF          | 68024        |
|                      | 3 Rails  |                       |                       |             | 68026        |
|                      | 4 Rails  |                       |                       |             | 68027        |
| ⊗                    | Railing, BR27D   |                       |                       |             |              |
|                      | 2 Rails  | 410                   | 1                     | LF          | 68028        |
|                      | 3 Rails  |                       |                       |             | 68029        |
|                      | 4 Rails  |                       |                       |             | 68030        |
| ⊗                    | Railing, California ST-20S   | 410                   | 1                     | LF          | 68655        |
| ⊗                    | Railing, GC 8000   | 410                   | 1                     | LF          | 68663        |
| ⊗                    | Railing, Illinois Steel  | 410                   | 1                     | LF          | 68654        |
| ⊗                    | Railing, Kansas Corral   |                       |                       |             |              |
|                      | 27", w/curb  | 410                   | 1                     | LF          | 68020        |
|                      | 27", w/out curb  |                       |                       |             | 68021        |
|                      | 32", w/curb  |                       |                       |             | 68022        |
|                      | 32", w/out curb  |                       |                       |             | 68023        |

### ESTIMATED QUANTITIES SHEET BID ITEMS – STRUCTURAL WIDENING OR REPAIR SUPERSTRUCTURE

PART 2  
 DATE: 31Oct2019  
 SHEET 5 of 8  
 FILE NO. 03.09-5

**LIST OF BID ITEMS – STRUCTURAL WIDENING OR REPAIR SUPERSTRUCTURE**

| REFER TO FOOTNOTE | ITEM  | VDOT SPECS REF. | QTY. ROUND-OFF | PAY UNIT | ITEM CODE |
|-------------------|---|-----------------|----------------|----------|-----------|
| ⊗                 | Railing, Massachusetts S3, 42"                        | 410             | 1              | LF       | 68656     |
| ⊗                 | Railing, Massachusetts S3, 54"                        | 410             | 1              | LF       | 68657     |
| ⊗                 | Railing, SBD01d                                       | 410             | 1              | LF       | 68662     |
| ⊗                 | Railing, Texas C411, 42"                              | 410             | 1              | LF       | 68658     |
| ⊗                 | Railing, Texas C411, 54"                              | 410             | 1              | LF       | 68659     |
| ⊗                 | Railing, Texas T-6                                    | 410             | 1              | LF       | 68016     |
| ⑮                 | Recoat Existing Structure<br>(B or Virginia STR. NO.) | 411             | ---            | LS       | 68472     |
|                   | Reinforcing Steel                                     | 406             | 10             | LB       | 68100     |
| ⊗                 | Reinforcing Steel Bridge Approach Slab                | 316             | 10             | LB       | 68270     |
|                   | Reinforcing Steel Splicer (Bar Size #4)               | 412             | 1              | EA       | 68217     |
|                   | (Bar Size #5)   |                 |                |          | 68218     |
|                   | (Bar Size #6)   |                 |                |          | 68219     |
|                   | (Bar Size #7)   |                 |                |          | 68220     |
|                   | (Bar Size #8)   |                 |                |          | 68221     |
|                   | Remove Asphalt Concrete Overlay                       | 425             | 1              | SY       | 68258     |
| ⑮                 | Remove Portion of Existing<br>Virginia Str. No. ( )   | 413             | ---            | LS       | 68900     |
|                   | Replace Bearing                                       | 426             | 1              | EA       | 68192     |
|                   | Replace Concrete Curb                                 | 412             | 1              | LF       | 68665     |
|                   | Replace Concrete Post                                 | 412             | 1              | EA       | 68670     |
|                   | Replace Concrete Rails Type A                         | 412             | 1              | LF       | 68666     |
|                   | Type B  |                 |                |          | 68667     |
|                   | Replace High Strength Grout                           | 412             | 1              | LF       | 68167     |
|                   | Reset Existing Rocker Expansion Bearing               | 426             | 1              | EA       | 68193     |
|                   | Saw Cutting   | 412             | 1              | LF       | 68576     |

**ESTIMATED QUANTITIES SHEET  
 BID ITEMS – STRUCTURAL WIDENING OR REPAIR  
 SUPERSTRUCTURE**

PART 2  
 DATE: 31Oct2019  
 SHEET 6 of 8  
 FILE NO. 03.09-6

**LIST OF BID ITEMS – STRUCTURAL WIDENING OR REPAIR SUPERSTRUCTURE**

| REFER TO FOOTNOTE | ITEM  | VDOT SPECS REF. | QTY. ROUND-OFF | PAY UNIT | ITEM CODE |
|-------------------|---|-----------------|----------------|----------|-----------|
| ⑭                 | Shotcrete, Type A                                       | 412             | 1              | SF       | 68074     |
|                   |   |                 |                | CF       | 68075     |
|                   | Type B  | 412             | 1              | SF       | 68076     |
|                   |   |                 |                | CF       | 68077     |
|                   | Silicone Joint Sealant, 1"                              | 427             | 1              | LF       | 68408     |
|                   | 1 1/2"  |                 |                | 68409    |           |
|                   | 2"  |                 |                | 68410    |           |
|                   | 2 1/2"  |                 |                | 68411    |           |
|                   | 3"  |                 |                | 68412    |           |
|                   | Steel Grid Floor  | 409             | 1              | SF       | 68145     |
|                   | Structural Steel Heat-Straightening                     | 426             | ---            | LS       | 68199     |
| ④                 | Structural Steel Plate Girder                           |                 |                |          |           |
|                   | ASTM A709 Grade 36                                      | 407             | 100            | LB       | 68106     |
|                   | ASTM A709 Grade 50                                      |                 |                |          | 68107     |
|                   | ASTM A709 Grade 50W                                     |                 |                |          | 68108     |
|                   | ASTM A709 Grade HPS50W                                  |                 |                |          | 68109     |
|                   | ASTM A709 Grade HPS70W                                  |                 |                |          | 68110     |
| ④                 | Structural Steel Rolled Beam                            |                 |                |          |           |
|                   | ASTM A709 Grade 36                                      | 407             | 100            | LB       | 68112     |
|                   | ASTM A709 Grade 50                                      |                 |                |          | 68113     |
|                   | ASTM A709 Grade 50W                                     |                 |                |          | 68114     |
|                   | Temporary Knee Brace                                    | PLAN            | 1              | EA       | 68280     |
| ⊗                 | Tooth Expansion Joint Assembly, 1 1/2"                  | 423             | 1              | LF       | 68520     |
|                   |   |                 |                |          | 68521     |
|                   |   | 1 3/4"          |                |          | 68522     |
|                   |   | 2"              |                |          | 68523     |
|                   |   | 2 1/4"          |                |          | 68524     |
|                   |   | 2 1/2"          |                |          | 68525     |
|                   |   | 2 3/4"          |                |          | 68526     |
|                   |   | 3"              |                |          | 68526     |
|                   | Traffic Barrier Service Concrete                        | 512             | 1              | LF       | 68710     |
|                   | Traffic Barrier Service Concrete<br>Single Face Parapet | 512             | 1              | LF       | 68760     |
|                   | Traffic Barrier Service Concrete<br>Double Face Parapet | 512             | 1              | LF       | 68762     |

**ESTIMATED QUANTITIES SHEET  
 BID ITEMS – STRUCTURAL WIDENING OR REPAIR  
 SUPERSTRUCTURE**

PART 2  
 DATE: 17Aug2016  
 SHEET 7 of 8  
 FILE NO. 03.09-7

**LIST OF BID ITEMS – STRUCTURAL WIDENING OR REPAIR SUPERSTRUCTURE**

| REFER TO FOOTNOTE | ITEM   | VDOT SPECS REF. | QTY. ROUND-OFF | PAY UNIT | ITEM CODE |
|-------------------|--|-----------------|----------------|----------|-----------|
|                   | Type A Milling 1/2"  | 425             | 1              | SY       | 68313     |
|                   | 1"   |                 |                |          | 68314     |
|                   | 1 1/2"   |                 |                |          | 68315     |
|                   | 1 3/4"   |                 |                |          | 68316     |
|                   | Type A Hydro-demolition 1/2"                                   | 425             | 1              | SY       | 68642     |
|                   | Type B Hydro-demolition 4"                                     | 425             | 1              | SY       | 68645     |
|                   | 4 1/2"   |                 |                |          | 68646     |
|                   | Ultrasonic Impact Treatment                                    | 426             | 1              | LF       | 68200     |
| ⊗                 | Waterproofing – Epoxy Resin                                    |                 |                |          |           |
|                   | Type EP-5LV  | 416             | 1              | SY       | 68404     |
|                   | Type EP-7  |                 |                |          | 68405     |
|                   | Type EP-3B/EP-3T   |                 |                |          | 68406     |
|                   | Welded Wire Fabric   | 406             | 10             | LB       | 68604     |
| ⑮                 | Zone Coating of Existing Structure<br>(B or Virginia STR. NO.) | 411             | ---            | LS       | 68465     |

## LIST OF BID ITEMS – STRUCTURAL WIDENING OR REPAIR SUBSTRUCTURE

| REFER TO<br>FOOTNOTE | ITEM  | VDOT<br>SPECS<br>REF. | QTY.<br>ROUND-<br>OFF | PAY<br>UNIT | ITEM<br>CODE   |
|----------------------|---|-----------------------|-----------------------|-------------|----------------|
| ⑧                    | Cofferdams  | 401                   | 1                     | EA          | 69620          |
| ⊗                    | Concrete Block Slope Protection                     | 415                   | 1                     | SY          | 69752          |
| ⑰                    | Concrete Class A3                                   | 412                   | 0.1                   | CY          | 69030          |
| ⑰                    | Concrete Class A4                                   | 412                   | 0.1                   | CY          | 69040          |
| ⑰                    | Concrete Class B2                                   | 412                   | 0.1                   | CY          | 69032          |
| ⑰                    | Concrete Class C1                                   | 412                   | 0.1                   | CY          | 69034          |
| ⑰                    | Concrete Class T3                                   | 412                   | 0.1                   | CY          | 69036          |
| ⊗ ②                  | Concrete Parapet                                    | 410                   | 1                     | LF          | 69700          |
| ⊗ ②                  | Concrete Parapet, 42"                               | 410                   | 1                     | LF          | 69702          |
| ⊗                    | Concrete Slab Slope Protection 4"<br>6"             | 415                   | 1                     | SY          | 69740<br>69750 |
|                      | Concrete Substructure Surface Repair                | 412                   | 1                     | SY          | 69500          |
|                      | Concrete Surface Color Coating                      | 412                   | 1                     | SY          | 69497          |
| ⑭                    | Crack Repair Type B                                 | 412                   | 1                     | LF          | 69493          |
|                      | Corrosion Resistant Reinforcing Steel,<br>Class I   | 406                   | 10                    | LB          | 69091          |
|                      | Corrosion Resistant Reinforcing Steel,<br>Class II  | 406                   | 10                    | LB          | 69092          |
|                      | Corrosion Resistant Reinforcing Steel,<br>Class III | 406                   | 10                    | LB          | 69093          |
| ⊗ ①                  | Dampproofing  | 417                   | 1                     | SY          | 69810          |
|                      | Driving Test for 12" Prestr. Concrete Pile          | 403                   | 1                     | LF          | 69430          |
|                      | 14"   |                       |                       |             | 69432          |
|                      | 18"   |                       |                       |             | 69436          |
|                      | 20"   |                       |                       |             | 69438          |
|                      | 24"   |                       |                       |             | 69442          |
|                      | Driving Test for 10" Steel Pile                     | 403                   | 1                     | LF          | 69111          |
|                      | 12"   |                       |                       |             | 69113          |
|                      | 14"   |                       |                       |             | 69115          |

### ESTIMATED QUANTITIES SHEET BID ITEMS – STRUCTURAL WIDENING OR REPAIR SUBSTRUCTURE

PART 2  
DATE: 27Jul2017  
SHEET 1 of 5  
FILE NO. 03.10-1

## LIST OF BID ITEMS – STRUCTURAL WIDENING OR REPAIR SUBSTRUCTURE

| REFER TO FOOTNOTE | ITEM  | VDOT SPECS REF. | QTY. ROUND-OFF | PAY UNIT | ITEM CODE |
|-------------------|---|-----------------|----------------|----------|-----------|
| ⑩                 | Dry Riprap Cl. A1 20"                       | 414             | 1              | TON      | 69625     |
|                   | Cl. I 26"                                   |                 |                |          | 69627     |
|                   | Cl. II 38"                                  |                 |                |          | 69639     |
|                   | Cl. III 53"                                 |                 |                |          | 69645     |
| ⑪                 | Dumped Riprap Typ. I 5'                     | 414             | 1              | Ton      | 69665     |
|                   | Typ. II 8'                                  |                 |                |          | 69667     |
|                   | Dynamic Pile Test                           | 403             | 1              | EA       | 69426     |
|                   | Dynamic Pile Test (End Bearing Piles)       | ATTD, 403       | 1              | EA       | 69427     |
|                   | F.R.P. Jacket (10" Square Piles)            | ATTD            | 1              | LF       | 69450     |
|                   | (12" Square Piles)                          |                 |                |          | 69452     |
|                   | (14" Square Piles)                          |                 |                |          | 69454     |
|                   | (16" Square Piles)                          |                 |                |          | 69456     |
|                   | (18" Square Piles)                          |                 |                |          | 69458     |
|                   | (20" Square Piles)                          |                 |                |          | 69460     |
|                   | (22" Square Piles)                          |                 |                |          | 69462     |
|                   | (24" Square Piles)                          |                 |                |          | 69464     |
|                   | F.R.P. Jacket (12" Round Piles)             | ATTD            | 1              | LF       | 69472     |
|                   | (14" Round Piles)                           |                 |                |          | 69474     |
|                   | (15" Round Piles)                           |                 |                |          | 69476     |
|                   | (18" Round Piles)                           |                 |                |          | 69478     |
|                   | F.R.P. Jacket (24" Square Column)           | ATTD            | 1              | LF       | 69488     |
|                   | (30" Square Column)                         |                 |                |          | 69490     |
|                   | Fiber Reinforced Polymer Wraps              | 412             | 1              | SF       | 69073     |
|                   | Flowable Backfill                           | ATTD            | 1              | CY       | 69007     |
|                   | Geocomposite Wall Drain                     | 401             | 1              | SY       | 69008     |
| ⑫⑬                | Grouted Riprap                              | 414             | 1              | TON      | 69675     |
|                   | Loading Test for 12" Prestr. Concrete Piles | 403             | 1              | EA       | 69353     |
|                   | 14"   |                 |                |          | 69363     |
|                   | 18"   |                 |                |          | 69383     |
|                   | 20"   |                 |                |          | 69391     |
|                   | 24"   |                 |                |          | 69408     |

### ESTIMATED QUANTITIES SHEET BID ITEMS – STRUCTURAL WIDENING OR REPAIR SUBSTRUCTURE

PART 2  
 DATE: 30Jan2018  
 SHEET 2 of 5  
 FILE NO. 03.10-2



## LIST OF BID ITEMS – STRUCTURAL WIDENING OR REPAIR SUBSTRUCTURE

| REFER TO<br>FOOTNOTE | ITEM   | VDOT<br>SPECS<br>REF. | QTY.<br>ROUND-<br>OFF | PAY<br>UNIT | ITEM<br>CODE                              |
|----------------------|--|-----------------------|-----------------------|-------------|---|
|                      | Loading Test for 10" Steel Pile<br>12"<br>14"                                  | 403                   | 1                     | EA          | 69157<br>69224<br>69124                   |
|                      | Loading Test for Timber Pile   | 403                   | 1                     | EA          | 69336                                     |
|                      | Pier Cap Repair  | ATTD, 412             | 1                     | EA          | 69509                                     |
|                      | Pier Protection System, 42"<br>54"   | PLAN                  | 1                     | LF          | 69708<br>69710                            |
|                      | Pile Point for 10" Steel Pile<br>12"<br>14"                                    | 403                   | 1                     | EA          | 69155<br>69222<br>69122                   |
|                      | Pile Point for Timber Pile   | 403                   | 1                     | EA          | 69334                                     |
|                      | Pipe Underdrain 6"   | 401                   | 1                     | LF          | 69010                                     |
| ⊗ (3)                | Porous Backfill  | 401                   | 1                     | CY          | 69009                                     |
|                      | Prestr. Conc. Carbon Steel Strand Piles,<br>12"<br>14"<br>18"<br>20"<br>24"    | 403                   | 1                     | LF          | 69412<br>69414<br>69418<br>69420<br>69424 |
|                      | Prestr. Conc. Stainless Steel Strand Piles,<br>12"<br>14"<br>18"<br>20"<br>24" | ATTD, 403             | 1                     | LF          | 69512<br>69514<br>69518<br>69520<br>69524 |
|                      | Prestressed Conc. CFRP Strand Piles,<br>12"<br>14"<br>18"<br>20"<br>24"        | ATTD, 403             | 1                     | LF          | 69532<br>69534<br>69538<br>69540<br>69544 |
| ⊗                    | Railing, BR27C<br>1 Rail<br>3 Rails<br>4 Rails                                 | 410                   | 1                     | LF          | 69078<br>69080<br>69081                   |

**ESTIMATED QUANTITIES SHEET  
 BID ITEMS – STRUCTURAL WIDENING OR REPAIR  
 SUBSTRUCTURE**

PART 2  
 DATE: 27Jul2017  
 SHEET 3 of 5  
 FILE NO. 03.10-3

## LIST OF BID ITEMS – STRUCTURAL WIDENING OR REPAIR SUBSTRUCTURE

| REFER TO FOOTNOTE | ITEM                                    | VDOT SPECS REF. | QTY. ROUND-OFF | PAY UNIT | ITEM CODE |
|-------------------|---|-----------------|----------------|----------|-----------|
| ⊗                 | Railing, BR27D                          | 410             | 1              | LF       | 69082     |
|                   | 2 Rails                                 |                 |                |          | 69083     |
|                   | 3 Rails                                 |                 |                |          | 69084     |
|                   | 4 Rails                                 |                 |                |          |           |
| ⊗                 | Railing, Kansas Corral                  | 410             | 1              | LF       | 69020     |
|                   | 27", w/curb                             |                 |                |          | 69021     |
|                   | 27", w/out curb                         |                 |                |          | 69022     |
|                   | 32", w/out curb                         |                 |                |          | 69023     |
| ⊗                 | Railing, Texas T-6                      | 410             | 1              | LF       | 69016     |
| ⑭                 | Reconstruct Bridge Seat Type A          | 412             | 1              | EA       | 69815     |
|                   | B                                       |                 |                |          | 69816     |
|                   | C                                       |                 |                |          | 69817     |
|                   | D                                       |                 |                |          | 69818     |
|                   | Reinforcing Steel                       | 406             | 10             | LB       | 69100     |
|                   | Reinforcing Steel Splicer (Bar Size #4) | 412             | 1              | EA       | 69825     |
|                   | (Bar Size #5)                           |                 |                |          | 69826     |
|                   | (Bar Size #6)                           |                 |                |          | 69827     |
|                   | (Bar Size #7)                           |                 |                |          | 69828     |
|                   | (Bar Size #8)                           |                 |                |          | 69829     |
| ⑮                 | Select Backfill (Abutment Zone)         | 401             | 1              | TON      | 69014     |
|                   | Sheet Piles, Concrete                   | 402             | 1              | SF       | 69061     |
| Steel             | 69060                                   |                 |                |          |           |
| Treated Timber    | 69062                                   |                 |                |          |           |
| Untreated Timber  | 69063                                   |                 |                |          |           |
| ⑭                 | Shotcrete, Type A                       | 412             | 1              | SF       | 69074     |
|                   |   |                 |                | CF       | 69075     |
|                   | Type B                                  | 412             | 1              | SF       | 69076     |
|                   |   |                 |                | CF       | 69077     |
|                   | Steel Piles, 10"                        | 403             | 1              | LF       | 69110     |
|                   | 12"                                     |                 |                |          | 69112     |
|                   | 14"                                     |                 |                |          | 69114     |

### ESTIMATED QUANTITIES SHEET BID ITEMS – STRUCTURAL WIDENING OR REPAIR SUBSTRUCTURE

PART 2  
 DATE: 17Aug2016  
 SHEET 4 of 5  
 FILE NO. 03.10-4

**LIST OF BID ITEMS – STRUCTURAL WIDENING OR REPAIR SUBSTRUCTURE**

| REFER TO FOOTNOTE | ITEM  | VDOT SPECS REF. | QTY. ROUND-OFF | PAY UNIT | ITEM CODE |
|-------------------|---|-----------------|----------------|----------|-----------|
| ⊗                 | Structure Excavation                            | 401             | 1              | CY       | 69011     |
| ⑮                 | Temporary Causeway<br>(B or Virginia STR. NO.)  | PLAN            | ---            | LS       | 69614     |
|                   | Temporary Sheet Piling                          | 402             | 1              | SF       | 69012     |
| ⊗                 | Waterproofing – Epoxy Resin<br>Type EP-3B/EP-3T | 416             | 1              | SY       | 69835     |
|                   | Welded Wire Fabric                              | 406             | 10             | LB       | 69507     |

**ESTIMATED QUANTITIES SHEET  
 BID ITEMS – STRUCTURAL WIDENING OR REPAIR  
 SUBSTRUCTURE**

PART 2  
 DATE: 31Oct2019  
 SHEET 5 of 5  
 FILE NO. 03.10-5

## LIST OF BID ITEMS – REQUIRED ON ALL PROJECTS

The following are required on all projects:

| REFER TO FOOTNOTE | ITEM                   | VDOT SPECS REF. | QTY. ROUND-OFF | PAY UNIT | ITEM CODE |
|-------------------|------------------------|-----------------|----------------|----------|-----------|
| ⑤                 | Construction Surveying | 517             | ---            | LS       | 00101     |
| ⑤                 | Mobilization           | 513             | ---            | LS       | 00100     |

## LIST OF BID ITEMS – OCCASIONAL USE

The following may have occasional use and may require a Special Provision or a reference to the appropriate section of the General Specifications:

| REFER TO FOOTNOTE | ITEM   | VDOT SPECS REF. | QTY. ROUND-OFF | PAY UNIT | ITEM CODE      |
|-------------------|--|-----------------|----------------|----------|----------------|
| ⑱                 | Asphalt Concrete Type SM-9.5A                                | 315             | 1              | TON      | 10635          |
|                   | SM-9.5D  |                 |                |          | 10636          |
|                   | SM-9.5E  |                 |                |          | 10637          |
|                   | SM-12.5A   |                 |                |          | 10607          |
|                   | SM-12.5D   |                 |                |          | 10608          |
|                   | SM-12.5E   |                 |                |          | 10609          |
|                   | IM-19.0A   |                 |                |          | 10610          |
|                   | IM-19.0D   |                 |                |          | 10611          |
| ⑱                 | Asph. Conc. Base Course Type BM-25.0A                        | 315             | 1              | TON      | 10642          |
|                   | BM-25.0D   |                 |                |          | 10643          |
| ⑱                 | Asph. Conc. Base Course Type BM-25.0A (T) ATTD, BM-25.0D (T) | 315             | 1              | TON      | 16395<br>16397 |
|                   | Field Office Ty. I   | 514             | 1              | MO       | 25505          |
|                   | Ty. II   |                 |                |          | 25506          |
|                   | Ty. III  |                 |                |          | 25507          |
|                   | Impact Attenuator Service Type I                             | 512             | 1              | EA       | 13611          |
|                   | Type II-1  |                 |                |          | 13612          |
|                   | Type II-2  |                 |                |          | 13613          |
|                   | Type II-3  |                 |                |          | 13614          |
|                   | Type II-4  |                 |                |          | 13615          |
|                   | Type II-5  |                 |                |          | 13616          |
|                   | Type II-6  | 13617           |                |          |                |

### ESTIMATED QUANTITIES SHEET BID ITEMS – REQUIRED ON ALL PROJECTS; OCCASIONAL USE

PART 2  
DATE: 17Aug2016  
SHEET 1 of 2  
FILE NO. 03.11-1

**LIST OF BID ITEMS – OCCASIONAL USE (Continued)**

|   |              |     |   |    |       |
|---|--------------|-----|---|----|-------|
| Impact Attenuator Service               | Type II-7    |     |   |    | 13618 |
|   | Type II-8    |     |   |    | 13619 |
|   | Type II-9    |     |   |    | 13620 |
|   | Type II-10   |     |   |    | 13621 |
|   | Type II-11   |     |   |    | 13622 |
|   | Type II-12   |     |   |    | 13623 |
|   | Type II-13   |     |   |    | 13624 |
|   | Type II-14   |     |   |    | 13625 |
|   | Type II-15   |     |   |    | 13626 |
|   | Type I-A     |     |   |    | 13630 |
| Railway Flagger and Watchperson Service | ATTD, 107    | --- |   | LS | 80040 |
| Str. Mounted Sound Barr. Wall           | - Reflective | 519 | 1 | SF | 13751 |
|   | - Absorptive |     |   |    | 13752 |

**ESTIMATED QUANTITIES SHEET  
 BID ITEMS – REQUIRED ON ALL PROJECTS;  
 OCCASIONAL USE**

PART 2  
 DATE: 17Aug2016  
 SHEET 2 of 2  
 FILE NO. 03.11-2

## LIST OF BID ITEMS – GENERIC NON-STANDARD ITEMS IN TRNS·PORT

The following are generic non-standard items in Trns·port for your use. Each of these items will require a non-standard description. Items which are identified as plan quantity standard items will also be plan quantity items when non-standard (i.e., parapet, railing, etc.).

### BRIDGE SUPERSTRUCTURE

| ITEM  | VDOT<br>SPECS<br>REF. | QTY.<br>ROUND-<br>OFF | PAY<br>UNIT | ITEM<br>CODE            |
|---|-----------------------|-----------------------|-------------|-------------------------|
| NS Guardrail, Thrie Beam  |                       | 1                     | LF          | 13400                   |
| NS Guardrail, Thrie Beam (Glulam)                                     |                       | 1                     | LF          | 13400                   |
| NS Bridge   | PLAN                  | ---                   | LS          | 60125                   |
| ⑰ NS Concrete   | 404                   | 0.1                   | CY          | 60420                   |
| NS Prestressed Concrete Beam  | 405                   | 1                     | EA          | 61200                   |
| NS Prestressed Concrete Beam Bulb-T                                   | 405                   | 1                     | EA          | 61205                   |
| NS Structural Steel   | 407                   | ---                   | LS          | 61800                   |
| ④ NS Structural Steel   | 407                   | 100                   | LB          | 61801                   |
| NS Parapet  | 410                   | 1                     | LF          | 62000                   |
| NS Railing  | 410                   | 1                     | LF          | 62021                   |
| NS Bridge Median Barrier  | 410                   | 1                     | LF          | 62055                   |
| NS Elastomeric Expansion Dam  | 421                   | 1                     | LF          | 62495                   |
| NS Adhesive Based Joint Sealer (Class I)<br>(Class II)<br>(Class III) | 420                   | 1                     | LF          | 62417<br>62424<br>62431 |
| NS Bridge Superstructure  |                       | 1                     | CY          | 62531                   |
| NS Bridge Superstructure  |                       | 1                     | SF          | 62532                   |
| NS Bridge Superstructure  |                       | 1                     | LB          | 62533                   |
| NS Bridge Superstructure  |                       | 1                     | SY          | 62534                   |
| NS Bridge Superstructure  |                       | 1                     | EA          | 62535                   |
| NS Bridge Superstructure  |                       | ---                   | LS          | 62536                   |
| NS Bridge Superstructure  |                       | 1                     | LF          | 62537                   |
| NS Bridge Superstructure  |                       | 1                     | TON         | 62538                   |

**ESTIMATED QUANTITIES SHEET  
GENERIC NON-STANDARD ITEMS IN TRNS·PORT  
BRIDGE SUPERSTRUCTURE**

PART 2  
DATE: 17Aug2016  
SHEET 1 of 6  
FILE NO. 03.12-1

## LIST OF BID ITEMS – GENERIC NON-STANDARD ITEMS IN TRNS · PORT

The following are generic non-standard items in Trns·port for your use. Each of these items will require a non-standard description. Items which are identified as plan quantity standard items will also be plan quantity items when non-standard (i.e., parapet, railing, etc.).

### BRIDGE SUBSTRUCTURE

| ITEM                         | VDOT<br>SPECS<br>REF. | QTY.<br>ROUND-<br>OFF | PAY<br>UNIT | ITEM<br>CODE   |
|------------------------------|-----------------------|-----------------------|-------------|----------------|
| NS Pipe Underdrain           | 401                   | 1                     | LF          | 64037          |
| NS Preboring Pile            | 403                   | 1                     | LF          | 64038          |
| NS Prestressed Concrete Pile | 403                   | 1                     | LF          | 64426          |
| NS Pile                      | 403                   | 1                     | LF          | 64875          |
| NS Pile Point                | 403                   | 1                     | EA          | 64876          |
| NS Retaining Structure       | PLAN, ATTD            | 1                     | SF          | 64901          |
| (17) NS Concrete             | 404                   | 0.1                   | CY          | 65095          |
| NS Parapet                   | 410                   | 1                     | LF          | 65720          |
| NS Bridge Median Barrier     | 410                   | 1                     | LF          | 65750          |
| NS Railing                   | 410                   | 1                     | LF          | 65810          |
| NS Temporary Causeway        | PLAN                  | ---                   | LS          | 66116          |
| NS Cofferdams                | 401                   | 1                     | EA          | 66121          |
| NS Riprap                    | 414                   | 1                     | SY<br>TON   | 66630<br>66631 |
| NS Bridge Substructure       |                       | 1                     | CY          | 66920          |
| NS Bridge Substructure       |                       | 1                     | LF          | 66921          |
| NS Bridge Substructure       |                       | 1                     | SF          | 66922          |
| NS Bridge Substructure       |                       | 1                     | LB          | 66923          |
| NS Bridge Substructure       |                       | 1                     | EA          | 66924          |
| NS Bridge Substructure       |                       | 1                     | TON         | 66925          |
| NS Bridge Substructure       |                       | 1                     | SY          | 66926          |
| NS Bridge Substructure       |                       | ---                   | LS          | 66927          |

**ESTIMATED QUANTITIES SHEET  
GENERIC NON-STANDARD ITEMS IN TRNS·PORT  
BRIDGE SUBSTRUCTURE**

PART 2  
DATE: 27Jul2017  
SHEET 2 of 6  
FILE NO. 03.12-2

## LIST OF BID ITEMS – GENERIC NON-STANDARD ITEMS IN TRNS · PORT

The following are generic non-standard items in Trns·port for your use. Each of these items will require a non-standard description. Items which are identified as plan quantity standard items will also be plan quantity items when non-standard (i.e., pedestrian fence).

### BRIDGE INCIDENTALS

| ITEM                        | VDOT<br>SPECS<br>REF. | QTY.<br>ROUND-<br>OFF | PAY<br>UNIT | ITEM<br>CODE |
|-----------------------------|-----------------------|-----------------------|-------------|--------------|
| NS Pedestrian Fence         | PLAN                  | 1                     | LF          | 67090        |
| NS Asphalt Concrete Overlay | 315                   | 1                     | TON         | 67201        |
| NS Asphalt Concrete         | 315                   | 1                     | TON         | 67210        |
| NS Bridge Incidentals       |                       | 1                     | LF          | 67902        |
| NS Bridge Incidentals       |                       | 1                     | TON         | 67903        |
| NS Bridge Incidentals       |                       | ---                   | LS          | 67904        |
| NS Bridge Incidentals       |                       | 1                     | SY          | 67905        |
| NS Bridge Incidentals       |                       | 1                     | TEC         | 67906        |
| NS Bridge Incidentals       |                       | 1                     | EA          | 67908        |

**ESTIMATED QUANTITIES SHEET  
GENERIC NON-STANDARD ITEMS IN TRNS·PORT  
BRIDGE INCIDENTALS**

PART 2  
DATE: 17Aug2016  
SHEET 3 of 6  
FILE NO. 03.12-3



## LIST OF BID ITEMS – GENERIC NON-STANDARD ITEMS IN TRNS·PORT

The following are generic non-standard items in Trns·port for your use. Each of these items will require a non-standard description. Items which are identified as plan quantity standard items will also be plan quantity items when non-standard (i.e., parapet, median barrier, etc.).

### STRUCTURAL WIDENING OR REPAIR – SUPERSTRUCTURE

| ITEM                                     | VDOT<br>SPECS<br>REF. | QTY.<br>ROUND-<br>OFF | PAY<br>UNIT | ITEM<br>CODE   |
|--|-----------------------|-----------------------|-------------|----------------|
| NS Parapet                               | 410                   | 1                     | LF          | 68011          |
| NS Median Barrier                        | 410                   | 1                     | LF          | 68013          |
| ⑰ NS Concrete                            | 404                   | 0.1                   | CY          | 68042          |
| ④ NS Structural Steel                    | 407                   | 100                   | LB          | 68115          |
| NS Prestressed Concrete Beam, Bulb-T     | 405                   | 1                     | EA          | 68131          |
| NS Prestressed Concrete Box Beam         | 405                   | 1                     | EA          | 68132          |
| NS Prestressed Concrete Slab             | 405                   | 1                     | EA          | 68133          |
| NS Prestressed Concrete I-Beam           | 405                   | 1                     | EA          | 68136          |
| NS Prestressed Concrete T-Beam           | 405                   | 1                     | EA          | 68137          |
| NS Reinforcing Steel Splicer             | 412                   | 1                     | EA          | 68222          |
| NS Parapet Closure                       | 412                   | 1                     | EA          | 68229          |
| NS Crack Repair                          | 426                   | 1                     | EA<br>IN    | 68256<br>68257 |
| NS Field Welding – Fillet Weld           | 426                   | 1                     | LF          | 68286          |
| NS Field Welding – Full Pen. Groove Weld | 426                   | 1                     | LF          | 68290          |
| NS Type A Milling                        | 425                   | 1                     | SY          | 68317          |
| NS Waterproofing – Epoxy Resin           | 416                   | 1                     | SY          | 68407          |
| NS Silicone Joint Sealant                | 427                   | 1                     | LF          | 68413          |

**LIST OF BID ITEMS – GENERIC NON-STANDARD ITEMS IN TRNS · PORT**

**STRUCTURAL WIDENING OR REPAIR – SUPERSTRUCTURE (Continued)**

| <b>ITEM</b>   | <b>VDOT<br/>SPECS<br/>REF.</b> | <b>QTY.<br/>ROUND-<br/>OFF</b> | <b>PAY<br/>UNIT</b> | <b>ITEM<br/>CODE</b>    |
|---|--------------------------------|--------------------------------|---------------------|-------------------------|
| NS Adhesive Based Joint Sealer (Class I)<br>(Class II)<br>(Class III) | 420                            | 1                              | LF                  | 68532<br>68537<br>68543 |
| NS Elastomeric Expansion Dam  | 421                            | 1                              | LF                  | 68563                   |
| NS Expansion Joint Reconstruction                                     | 412                            | 1                              | LF                  | 68571                   |
| NS Furnish Latex Modified Concrete                                    | 425                            | 0.1                            | CY                  | 68618                   |
| NS Furnish High Early Strength Latex<br>Modified Concrete             | 425                            | 0.1                            | CY                  | 68619                   |
| NS Furnish Very Early Strength Latex<br>Modified Concrete             | 425                            | 0.1                            | CY                  | 68621                   |
| NS Furnish Class A4 Bridge Deck Concrete                              | 425                            | 0.1                            | CY                  | 68623                   |
| NS Type A Hydro-demolition  | 425                            | 1                              | SY                  | 68644                   |
| NS Type B Hydro-demolition  | 425                            | 1                              | SY                  | 68648                   |
| NS Br. Superstructure Widening/Repair                                 |                                | 1                              | LF                  | 68902                   |
| NS Br. Superstructure Widening/Repair                                 |                                | 1                              | CY                  | 68903                   |
| NS Br. Superstructure Widening/Repair                                 |                                | 1                              | EA                  | 68904                   |
| NS Br. Superstructure Widening/Repair                                 |                                | 1                              | CF                  | 68905                   |
| NS Br. Superstructure Widening/Repair                                 |                                | 1                              | SF                  | 68906                   |
| NS Br. Superstructure Widening/Repair                                 |                                | 1                              | LB                  | 68907                   |
| NS Br. Superstructure Widening/Repair                                 |                                | ---                            | LS                  | 68908                   |
| NS Br. Superstructure Widening/Repair                                 |                                | 1                              | TON                 | 68909                   |
| NS Br. Superstructure Widening/Repair                                 |                                | 1                              | SY                  | 68910                   |

**ESTIMATED QUANTITIES SHEET  
GENERIC NON-STANDARD ITEMS IN TRNS · PORT  
STRUCTURAL WIDENING OR REPAIR - SUPERSTRUCTURE**

PART 2  
DATE: 17Aug2016  
SHEET 5 of 6  
FILE NO. 03.12-5

## LIST OF BID ITEMS – GENERIC NON-STANDARD ITEMS IN TRNS · PORT

The following are generic non-standard items in Trns·port for your use. Each of these items will require a non-standard description. Items which are identified as plan quantity standard items will also be plan quantity items when non-standard (i.e., parapet).

### STRUCTURAL WIDENING OR REPAIR – SUBSTRUCTURE

| ITEM                                | VDOT<br>SPECS<br>REF. | QTY.<br>ROUND-<br>OFF | PAY<br>UNIT | ITEM<br>CODE |
|-------------------------------------|-----------------------|-----------------------|-------------|--------------|
| ⑰ NS Concrete                       | 412                   | 0.1                   | CY          | 69025        |
| NS Parapet                          | 410                   | 1                     | LF          | 69070        |
| NS Pile                             | 403                   | 1                     | LF          | 69169        |
| NS Retaining Structure              | PLAN, ATTD            | 1                     | SF          | 69551        |
| NS Cofferdam Site 2                 | 401                   | 1                     | EA          | 69621        |
| NS Reconstruct Bridge Seat          | 412                   | 1                     | EA          | 69822        |
| NS Reinforcing Steel Splicer        | 412                   | 1                     | EA          | 69830        |
| NS Waterproofing – Epoxy Resin      | 416                   | 1                     | SY          | 69836        |
| NS Br. Substructure Widening/Repair |                       | 1                     | CY          | 69900        |
| NS Br. Substructure Widening/Repair |                       | 1                     | LF          | 69901        |
| NS Br. Substructure Widening/Repair |                       | 1                     | SF          | 69902        |
| NS Br. Substructure Widening/Repair |                       | 1                     | CF          | 69903        |
| NS Br. Substructure Widening/Repair |                       | 1                     | LB          | 69904        |
| NS Br. Substructure Widening/Repair |                       | 1                     | EA          | 69905        |
| NS Br. Substructure Widening/Repair |                       | ---                   | LS          | 69906        |
| NS Br. Substructure Widening/Repair |                       | 1                     | TON         | 69907        |
| NS Br. Substructure Widening/Repair |                       | 1                     | SY          | 69908        |

**ESTIMATED QUANTITIES SHEET  
GENERIC NON-STANDARD ITEMS IN TRNS·PORT  
STRUCTURAL WIDENING OR REPAIR - SUBSTRUCTURE**

PART 2  
DATE: 27Jul2017  
SHEET 6 of 6  
FILE NO. 03.12-6

General:

All revision procedures, except for the table of estimated quantities, are covered in Chapter 1. The following shall apply to revisions to the table of estimated quantities.

To avoid clutter and confusion in the table of estimated quantities, **only the latest revision to a quantity shall be shown.**

For example, if a pay item is changed during revision 1, the original quantity shall be lined through, the new quantity shall be shown next to the original, and the delta 1 symbol shall be designated:

| Structure Excavation              | Concrete Parapet |
|-----------------------------------|------------------|
| CY ⊗                              | LF ⊗             |
| —                                 | 500              |
| <del>405</del> 120/Δ <sub>1</sub> | 10               |
| —                                 | —                |

Note that each quantity is positioned in the top left corner of the block. This allows for one revision to be placed to the right and also for the As-Built quantity to be posted in the bottom of the block.

If the same pay item is changed again during revision 2, the revised quantity of 120 CY (from revision 1) shall be replaced by the new quantity and the revision symbol (from revision 1) shall be replaced by the delta 2 symbol:

Only the very latest quantity change is denoted

This space reserved for As-Built quantity

| Structure Excavation              | Concrete Parapet |
|-----------------------------------|------------------|
| CY ⊗                              | LF ⊗             |
| —                                 | 500              |
| <del>405</del> 140/Δ <sub>2</sub> | 10               |
| —                                 | —                |

**ACCEPTABLE**

| Structure Excavation  | Concrete Parapet |
|---|------------------|
| CY ⊗  | LF ⊗             |
| —   | 500              |
| <del>405</del> 140/Δ <sub>2</sub><br><del>120</del> /Δ <sub>1</sub> | 10               |
| —   | —                |

**UNACCEPTABLE**

When As-Built notations are made, the original quantity and revision (if applicable) are lined through and the as-built quantity is denoted in the bottom of the block. The AB delta symbol shall be placed next to the quantity.

As-Built quantity is denoted in bottom of block

| Structure Excavation   | Concrete Parapet |
|--|------------------|
| CY ⊗   | LF ⊗             |
| —  | 500              |
| <del>405</del> <del>140</del> /Δ <sub>2</sub><br>147/Δ <sub>AB</sub> | 10               |
| —  | —                |

Also refer to Chapter 1 for As-Built procedures.

**ESTIMATED QUANTITIES SHEET  
TABLE OF ESTIMATED QUANTITIES  
REVISIONS**

PART 2  
DATE: 01Feb2005  
SHEET 1 of 1  
FILE NO. 03.13