

How do the  
Friends of the Library  
support the  
Lititz Public Library?

- Programs
- Volunteers
- Library Advocacy
- Summer Reading Program
- Quarterly Newsletter
- Volunteer Breakfast
- Book Sale
- Events
- And More!



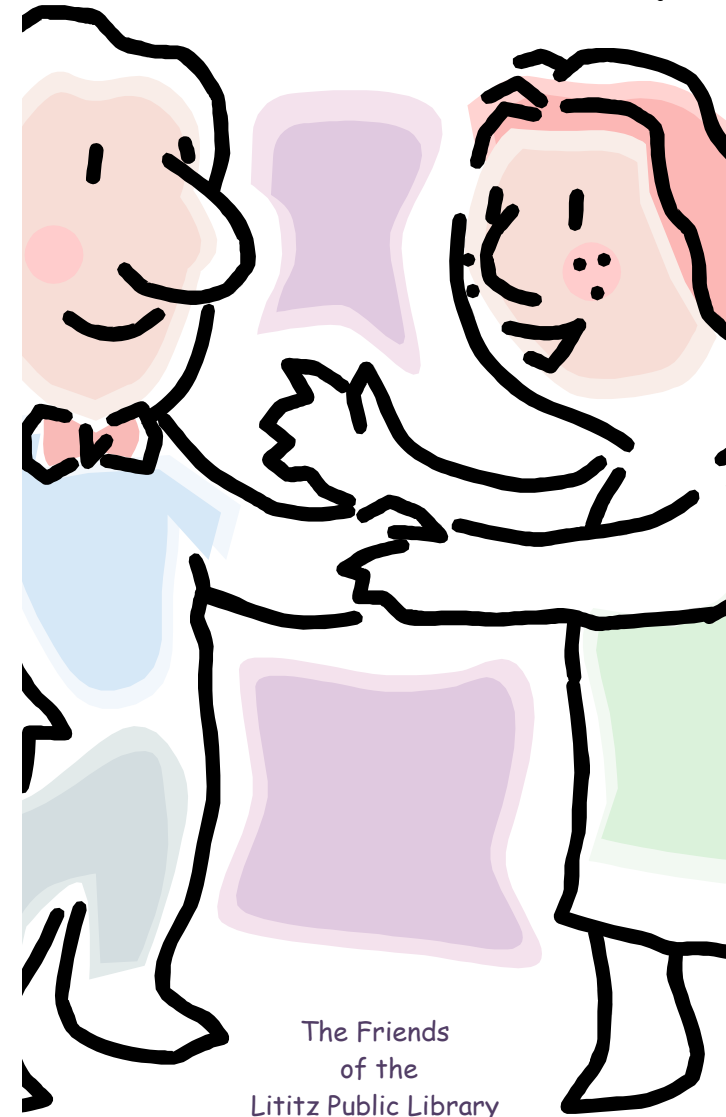
~Nourishing the Mind~  
~Enriching the Community~  
~Connecting to the World~

Lititz Public Library  
651 Kissel Hill Rd.  
Lititz, PA 17543  
(717) 626-2255  
[www.lititzlibrary.org](http://www.lititzlibrary.org)

*Hours*

Monday-Thursday 9:00 am-8:00 pm  
Friday 9:00 am-6:00 pm  
Saturday 9:00 am-4:00 pm

Join the  
Friends of the  
Lititz Public Library



The Friends  
of the  
Lititz Public Library  
is a community-based group dedicated to  
promoting library programs and advocating  
library services through fundraising projects  
and special events.



As a member of the Friends of the Library you will receive a quarterly newsletter covering library events and issues.

Most people who join the Friends become *supporting* members, their annual dues provide funds to buy library materials and cover operating expenses.

Others prefer to be *active* members of the group. If you would like to meet other Friends or volunteer for special projects join our monthly meetings held the last Monday of every month at 7:00 pm. Most meetings are held at the library but you can call the library at 626-2255 to confirm the time and place.

Volunteer opportunities include:

- Semi Annual Book Sales
- Chocolate Walk Volunteers
- Shifting Library Books
- Helping with Programs and Receptions
- Fundraisers
- Shelf Reading Work Parties
- Stuffing Envelopes
- Patron and Volunteers Appreciation Events
- Special Projects

## Meeting Schedule

### January

Kick-Off/Business Meeting and Refreshments

### February

Library Work Session

### March

Library Work Session

### April

Quarterly Business Meeting and Refreshments

### May

Library Work Session

### June and July

Summer Recess

### August

Quarterly Meeting and Picnic

### September

Library Work Session

### October

Library Work Session

### November/December

Quarterly Meeting and Holiday Party



## Friends of the Library Membership Form

Name \_\_\_\_\_

Address \_\_\_\_\_

Phone \_\_\_\_\_ E-mail \_\_\_\_\_

\_\_\_\_\_ I would like to be a supporting member of the Friends of the Library.

\_\_\_\_\_ Please find enclosed my tax deductible donation of \$ \_\_\_\_\_

and/or

\_\_\_\_\_ I would like to be an active member of the Friends. Please contact me with details of the next meeting.

Membership forms may be returned to the **Lititz Public Library, 651 Kissel Hill Rd., Lititz, PA 17543.**

The Lititz Public Library is a non-profit, 501(c)(3) tax-exempt organization, entity number 23-6406263/000.