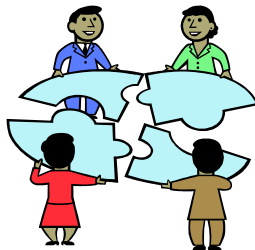


Cluster Connections



SE Cluster Annual Meeting

Saturday, November 17, 2007

9:00 am to 3:00 pm

Unitarian Universalist Church of Fort Lauderdale
3970 NW 21 Avenue, Fort Lauderdale [HTTP://Members.aol.com/UUCFL/](http://Members.aol.com/UUCFL/)

\$10 in advance; \$15 after November 9 postmark and at the door (Scholarship assistance available)

Childcare (\$10 per child) with advance registration only.

9:00 Registration & Continental Breakfast
9:30 Welcome & Opening
10:00 Workshops & Roundtable Discussions
12:00 Lunch

1:00 Business Meeting & Elections
1:30 Workshops & Roundtable Discussions
3:00 Closing

MORNING:

SPECIAL TWO SESSION WORSHIP

WORKSHOP (PART A)

The Greek root of "liturgy" means the work of the people. Lay-led worship is the work and fruit of the congregation. Learn the basic elements of creating and leading high-quality worship, how to invite the congregation into life-changing experience, and insider tips on developing sermons, so that the next worship service you lead is part of transforming your life and that of the congregation. There is so much to learn; this workshop will be an all day workshop. Presented by Rev. Naomi King, River of Grass.

PRESIDENTS' ROUNDTABLE DISCUSSION

This roundtable discussion will be an opportunity to network and share with others who are (or have been or will be) in this important congregational leadership position. All current congregational presidents and vice presidents, and past vice presidents are invited to attend. Bring your problems and learn that you aren't alone. Someone else has dealt with it. Facilitated by Gary Ladka, past president of UU Church of Fort Lauderdale.

AFTERNOON:

SPECIAL TWO SESSION WORSHIP

WORKSHOP (PART B)

The Worship Workshop continues.

TREASURERS' ROUNDTABLE DISCUSSION

One of the most challenging positions in our congregations is that of Treasurer. Treasurers and Finance Committee chairs and members are encouraged to participate in this unique opportunity to network with others. What are the financial challenges facing your congregation? How have others handled these challenges? Facilitated by TBA.

THE DREAM OF A CONGREGATION-WIDE SOCIAL JUSTICE PROJECT

The Miami congregation underwent a congregational process to select a social justice project that was supported by the entire membership and throughout the church programming. David Roelant, past president of the Miami UU Congregation, will explain the process.

MEMBERSHIP “BEST PRACTICES”

Membership Committee chairs and members are invited to participate in this group discussion of the challenge of membership growth. What works? What didn't work? Facilitated by Leana Bresnahan, Membership Co-Chair, River of Grass.

UNITARIAN UNIVERSALIST LEGISLATIVE MINISTRY, FLORIDA

Learn about our statewide justice ministry that serves to empower the moral voice of Unitarian Universalist values in the public arena. Guided by UU principles, the Ministry educates, organizes and advocates for public policies that uphold the truth and dignity of every person, further justice, equity and compassion in human relations, ensure the use of the democratic process and the rights of conscience, protect religious freedom, promote respect for the interdependent web of all existence and build a community of peace, justice and liberty for all. Bob Keim from the UULMF is our special guest for this workshop.

ROTATION MODEL FOR RELIGIOUS EDUCATION

Religious Education has been revolutionized at River of Grass. There are more people teaching than ever before. How did this happen? Deb Giblin-Davis, DRE, will talk about the RE Rotation plan that allows for a less time consuming commitment from teachers.

LIVING COVENANT GROUPS

You have probably heard about how special a covenant group is from the members and friends who are part of one. What makes them so special? Why even have covenant groups? Learn what makes them special and learn what keeps them going. Current covenant group participants and facilitators as well as covenant group hopefuls are invited to join Myra Symons-Kazanci, Fort Lauderdale Covenant Group Coordinator, for a lively discussion.

-- See next page for Registration Form --

Registration Form

Name(s)

Address

City

Zip

Email

Congregation

No. of people ____ x \$10 (\$15 after 11/9/2007) = \$ _____

Childcare: No. of children ____ x \$10 = \$ _____

Name(s) and Age(s) of children:

Total \$ _____

Registration includes Lunch and Continental Breakfast.

Special Needs (Vegetarian, etc.) _____

Please make out your check to the Southeast Cluster.

Mail check and this registration form to:

Judy Norris
4913 Broadstone Circle
West Palm Beach, FL 33417

If you plan to attend but can't register by November 9,
please contact Kathy Jens-Rochow (below) so we have an accurate count for food.

Information/scholarship assistance: Kathy Jens-Rochow kjensrochow@comcast.net
954 463-2085 <http://uflorida.org/secluster.htm>