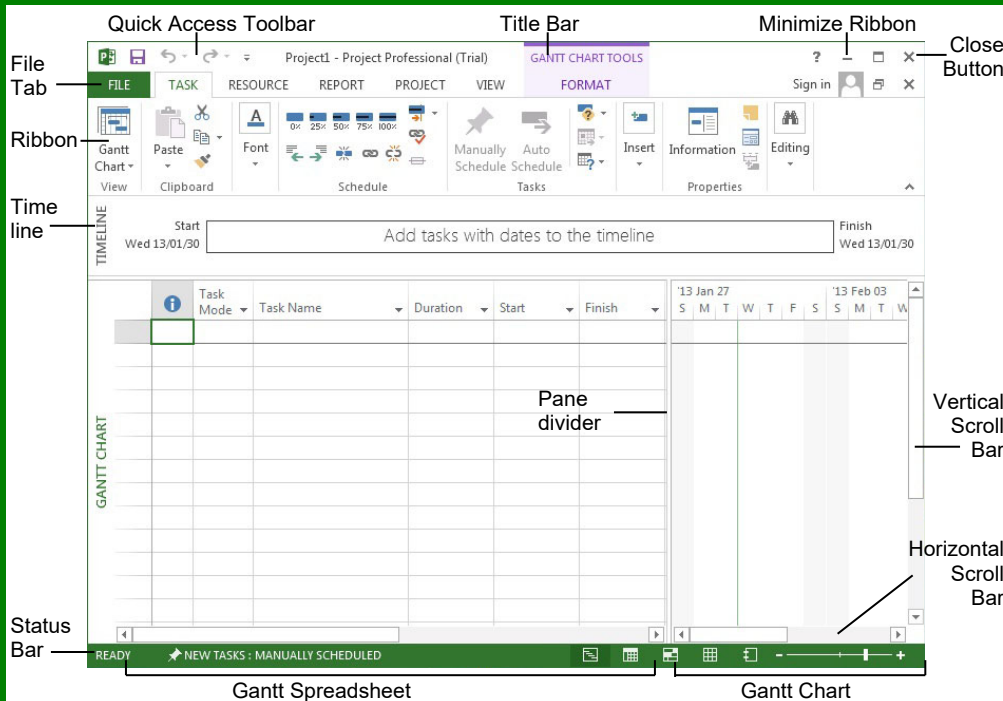


Project 2013

Quick Reference Card

Project 2013 Screen



Common Views

To Display a View: Select the **View** tab and choose from the Task Views available.

Gantt Chart: Default view. Displays a list of tasks with bar chart information.

Task Usage: Displays a list of tasks showing assigned resources under each task.

Network Diagram: Displays a sequence or logic diagram that shows the project's tasks and dependencies.

Calendar: Displays tasks and durations in a monthly calendar.

Other Views: Provides additional views:

- **Task Form:** Detailed information of the select task.
- **Task Sheet:** List of all the tasks and selected details.
- **Timeline:** An expanded view of the timeline.

Keystroke Shortcuts

Save Project File	Ctrl + S
Close Current Project	Ctrl + W
Open Existing Project	Ctrl + O
Print/Print Preview	Ctrl + P
Task or Resource Information	Shift + F2
Assign Resources	Alt + F10
Copy	Ctrl + C
Cut	Ctrl + X
Paste	Ctrl + V
Help	F1
Go To Selected Task	Ctrl + Shift + F5
Link Selected Task	Ctrl + F2
Unlink Selected Task	Ctrl + Shift + F2
Create a Hyperlink	Ctrl + K
Zoom In	Ctrl + /
Zoom Out	Ctrl + Shift + *
Undo	Ctrl + Z
Redo	Ctrl + Y
Bold	Ctrl + B
Italics	Ctrl + I
Underline	Ctrl + U

Project 2013 Fundamentals

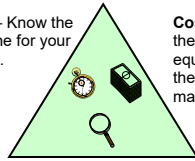
- **To Create a New Project:** Click the **File** tab, click the **New** tab and click the **Blank Project** option. Or press **Ctrl + N**.
- **To Use a Template:** Click the **File** tab, click the **New** tab. Select a template from the menu and click **OK**.
- **To View Information About the Project:** Select the **Project** tab and click **Project Information** in the Properties group.
- **To Set the Working Time Calendar:** Select the **Project** tab and click **Change Working Time** in the Properties group. Select the date(s) you want to change and select a new calendar, or enter the new working hours in the **Start** and **Finish** boxes.
- **To Use Spell check:** Select the **Project** tab and click **Spelling** in the Proofing group.
- **To Use Undo and Redo:** Click the **Undo** button and **Redo** button on the Quick Access toolbar.
- **To Adjust the Timescale:** Select the **View** tab and choose from the options in the **Timescale** list arrow in the Zoom group.
- **To Adjust the Zoom Level:** Select the **View** tab and click the **Zoom** button to either zoom in or zoom out. Alternatively, click the **Entire Project** button to zoom to a level where the whole project is visible.
- **To Save a Project File:** Click the **Save** button on the Quick Access toolbar or click **File** tab and select **Save** or **Save As** if you wish to change the file name or location.
- **To Set a Baseline Plan:** Click the **Project** tab, click the **Set Baseline** drop list arrow in the Schedule group and choose **Set Baseline**. Click the **Set Baseline Plan** option, choose the baseline number, save the plan for the entire project or selected tasks, and click **OK**.
- **To Set an Interim Plan:** Click the **Project** tab, click the **Set Baseline** drop list arrow in the Schedule group and choose **Set Baseline**. Select the baseline details and click **OK**. Click the **Set Interim plan** option, choose where to copy from and where they should be copied into, save the plan for the entire project or selected tasks, and click **OK**.
- **To Show or Hide the Planning Wizard:** Click the **File** tab and click **Options**. Click the **Advanced** tab and either select or deselect the **Advice from Planning Wizard** checkbox.
- **To View a Task's Usage:** Select the task and click the **View** tab. Click the **Task Usage** button in the Task Views group.
- **To Get Help:** Press **F1** to open the Project Help task pane, type your question, and click the **Search** button.

Plan and Manage the Project

- There are six basic steps to follow when planning a project: (1) Define a project (2) Plan project activities (3) Plan for and gather resources (4) Plan project costs (5) Plan for quality and risks (6) Plan security and communication.
- Project management is the process of planning, organizing, and managing tasks and resources to accomplish an objective within constraints of time, resources, or cost.
- Adjusting one constraint of the Project Triangle affects the other two.

Project Triangle

Time – Know the deadline for your project.

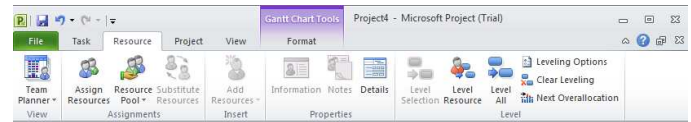


Cost – This includes the people and the equipment that do the work, and the materials they use.

Scope – This includes the quality, functions, and features of your product or service, and the work required to deliver it.

Working with Resources and Costs

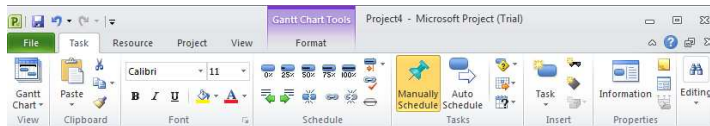
The Resource Tab



- **To Enter Resource Availability:** Click the **Information** button in the Properties group. Enter the Available To and Available From dates in the Resource Availability table, and enter the Maximum Units available in the Units field.
- **To Assign a Resource:** Select a task and click the **Assign Resources** button, select the resource(s) and click **Assign**.
- **To Enter Costs:** Click the **Information** button in the Properties group and click the **Costs** tab. Enter amounts in the **Standard Rate** field, the **Overtime Rate** field, or the **Per Use Cost** fields. Then choose when you'd like to begin accruing the resource cost in the **Cost Accrual** field.

Working with Tasks

The Task Tab



- **To Enter a Task:** Type the task's name in the Task Name column and press **Enter**.
- **To Enter a Duration:** Type the duration (m = minutes; h = hours; d = days; w = weeks; mo = months) in the Duration column and press **Enter**.
- **To Create a Milestone:** Enter 0 (zero) in the Duration column. Or, click the **Information** button in the Properties group, select the **ADVANCED** tab and click the **Mark task as Milestone** check box.
- **To Create a Recurring Task:** Click the **Task** list arrow in the Insert group and select **Recurring Task** from the list. Enter information into the Recurring Task Information dialog box.
- **To Access Task Information:** Select the task and click the **Information** button in the Properties group. Or, press **Ctrl + F2**
- **To Organize the Task List:** Create summary tasks and subtasks by selecting the task(s) and clicking the **Outdent Task** or **Indent Task** buttons in the Schedule group.
- **To Link Tasks:** Press **Ctrl** and select the two tasks you want to link in the order that you want to link them and click the **Link Tasks** button in the Schedule group.
- **To Unlink Tasks:** Press **Ctrl** and select two linked tasks in the order they are linked. Click the **Unlink Tasks** button in the Schedule group.
- **To Split a Task:** Select the task, click the **Split Tasks** button in the Schedule group, and use the dividing tool to split the task's Gantt bar.
- **To Enter Lag or Lead Time:** Click the successor task and click the **Information** button in the Properties group. Click the **Predecessors** tab and enter a lead time with a (-) minus sign, or lag time with a (+) plus sign in the **Lag** box.
- **To Enter a Task Deadline or Constraint:** Click the task to which you want to add a deadline and click the **Information** button in the Properties group. Click the **Advanced** tab, and select a date in the Deadline box, or select the relevant constraint and enter the Constraint date.
- **To Assign a Task Calendar:** Select the task, click the **Information** button in the Properties tab and click the **Advanced** tab. Click the **Calendar** list arrow and select a calendar from the drop-down list.
- **To Apply a Filter:** Click the **Filter** list arrow for the relevant column and select the filter you want to apply to the project.

Viewing the Project

- **Applying a Split View:** Select one of the options from the **Timeline** or **Details** list arrows in the Split View group on the VIEW tab.
- **Applying Groups:** Select one of the options from the **Group By** list arrow in the Data group on the VIEW tab.
- **Applying Filters:** Select one of the options from the **Filter** list arrow in the Data group on the VIEW tab.
- **Sort the Information:** Select one of the options from the **Sort** list arrow in the Data group on the VIEW tab.
- **View the Critical Path:** In the Gantt Chart View, select **Critical** from the options in the **Highlight** list arrow in the Data group on the VIEW tab.

Tracking Progress

Always save a baseline plan before beginning to track progress.

- **Update Tasks:** Select the task you want to update and select the percentage complete in the Schedule group on the TASK tab.
- **Update Resources:** In Resource Usage or Task Usage view, select the resource you wish to update, click the **Details** button in the Properties group on the RESOURCE tab and update the Work value.
- **Update Costs:** Turn off automatic cost updating: click the **File** tab and select **Options**. Click the **Schedule** tab and select the **Off** option for Calculate project after each edit at the bottom of the menu.
- **Check Project Variance:** In a task or resource view, click the **VIEW** tab and click the **Tables** list arrow. Click **More Tables** and select **Variance** from the options.

Balancing the Project

- **To Identify an Overallocated Resource:** In the Resource Usage View, select **Overallocated Resources** from the options in the **Highlight** list arrow on the VIEW tab.
- **To Balance Overallocated Resources Automatically:** Click the **Leveling Options** button in the Level group on the RESOURCE Tab. Select **Automatic** under Leveling Calculations.
- **To Reassign Work:** Open **Gantt Chart** view, select the overallocated resource and click the **Assign Resources** button in the Assignments group on the RESOURCE tab. Select the overallocated resource, click the **Remove** button, select another resource and click **Assign**.

Interactive Training for Over 2,000 Topics:

Office 2016 for Windows

Excel 2016
Outlook 2016
PowerPoint 2016
Word 2016

Office 2016 for Mac

Excel 2016
Outlook 2016
PowerPoint 2016
Word 2016

Office 365

OneDrive for Business
Skype for Business

Office 2013

Excel 2013
OneNote 2013
Outlook 2013
PowerPoint 2013
SharePoint 2013
Word 2013

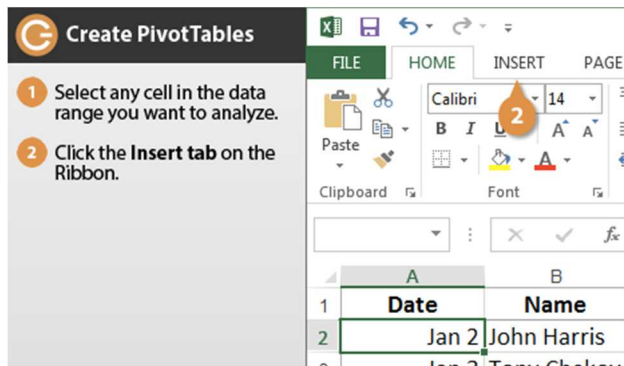
Operating Systems

Windows 10
Windows 8
Windows 7
Computer Basics
Mac OS

Also Available

Soft Skills Courses
Spanish Editions

Each Course Includes:



Interactive Tutorials

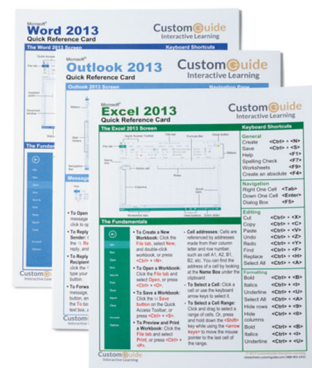
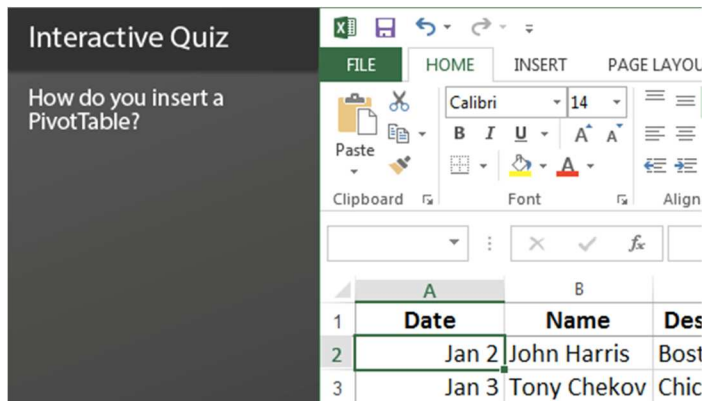
Get hands-on training with bite-sized tutorials that recreate the experience of using actual software. SCORM-compatible for your LMS!

[View Sample](#)

Customizable Courseware

Why write training materials when we've done it for you? Training manuals, practice files, and instructor guides with unlimited printing rights!

[View Sample](#)



Interactive Assessments

How much do your users really know? Accurately measure skills with realistic software simulations. SCORM-compatible for your LMS!

[View Sample](#)

Quick References

Handy "cheat sheets" with shortcuts, tips, and tricks. Free for personal use!

[View Samples](#)

Over 3,000 Companies Rely on CustomGuide

