

## Create Physical Inventory Documents (Collective)

### Use

This activity is performed to create physical inventory documents collectively on per plant - per storage location - per stock type technique. The facility mimics the functionality of SAP standard transaction code **MI01 – Creating Physical Inventory Documents**. The resulting PIDs will be automatically exported into an excel file template that will serve as the count sheets.

### Procedure

1. Access the transaction using the following navigation option:

|                  |        |
|------------------|--------|
| Transaction code | ZMM060 |
|------------------|--------|

2. On the **Create Phys. Inv. Documents (Collective) initial screen**, make the following entries:

| Field Name                            | User action and values | Comment  |
|---------------------------------------|------------------------|--|
| Document Date                         | Required.              | The document date is the date on which the original document was issued.   |
| Planned Count Date                    | Required.              | Indicates the date on which the physical inventory count is to take place.   |
| <b>Location of Physical Inventory</b> |                        |  |
| Plant                                 | Required.              | Key uniquely identifying a <b>plant</b> .  |
| Storage Location                      | Required.              | Number of the <b>storage location</b> at which the material is stored. A <b>plant</b> may contain one or more storage locations.   |
| Limit Batch Count to                  | 300.                   | Maximum number of line items to be generated after creation PIDs.  |
| <b>Other Information</b>              |                        |  |
| Posting Block                         | Tick Box - Check       | Indicates that no <b>goods movements</b> involving the materials listed in the physical inventory document can be posted for the duration of a <b>physical inventory count</b> . |
| Batches w. del. Flag                  | Check Box.             | Select if you want to include batches with deletion flag indicator.  |
| Selected Materials Only               | Optional.              | Fill this parameter if you want to generate PIDs for a specific material(s) only.  |
| <b>Stock Types</b>                    |                        |  |
| Unrestricted Use                      | Option Button.         | Indicates that the <b>unrestricted - use stock</b> is affected by the transaction. Select this option to generate PID for this stock type.                                       |
| In Quality Inspection                 | Option Button.         | Indicates that the <b>stocks</b> in - quality inspection is affected by the transaction. Select this option to generate PID for this stock type.                                 |
| Blocked                               | Option Button.         | Indicates that the <b>blocked stock</b> is affected by the transaction. Select this option to generate PID for this stock type.  |

## ZMM060 : Create Phys. Inv. Documents (Collective) v.012113-003 MISMMM



|                    |                                     |
|--------------------|-------------------------------------|
| Document Date      | <input checked="" type="checkbox"/> |
| Planned Count Date | <input checked="" type="checkbox"/> |

### Location of Physical Inventory

|                      |                                     |
|----------------------|-------------------------------------|
| Plant                | <input checked="" type="checkbox"/> |
| Storage Location     | <input checked="" type="checkbox"/> |
| Limit Batch Count To | 300                                 |

### Other information

|                        |   |
|------------------------|---|
|                        | <input checked="" type="checkbox"/> Posting Block |
|                        | <input type="checkbox"/> Batches w. del. flag     |
| Phys. inventory no.    | <input type="text"/>                              |
| Phys. inventory ref.   | <input type="text"/>                              |
| Seleted Materials Only | <input type="text"/>                              |

### Stock Types

|   |
|---|
| <input checked="" type="radio"/> Unrestricted Use |
| <input type="radio"/> In Quality Inspection       |
| <input type="radio"/> Blocked                     |

3. Click the **Execute** button or press **F8**. The program will attempt to create physical inventory documents for all of the materials maintained in the input storage location of the input plant. The generated PIDs will be then extracted into an excel file templates.

90% Extracting templates to C:\BP05\_0001

4. A system message will appear informing the user that the excel file templates were succesfully saved. The template file location will be displayed on the next screen after execution.

Excel templates successfully saved!

5. Further details will be displayed like logs summary, number of encountered errors and template file location as well as the date and time of extraction.

**ZMM060 : Create Phys. Inv. Documents (Collective) v.012113-003 MISMMM**

Logs Summary


Run Date&Time

Results

Template File Loc. C:\BP05\_0001

Phys. Inventory Document Extractor  
January 24, 2013 at 02:12:17 PM  
No Error(s) Occured!  
Phys. Inv. Docs. was created.  
Excel file(s) succesfully extracted!

| Error in | S.Type. | Details of Error |
|----------|---------|------------------|
| No Data  |         |                  |

6. Click the **Back**  icon to go back on the previous screen.

## Result

1. Physical Inventory Documents was generated.
2. Template file (Countsheets) was extracted.



To create PIDs for the other **Stock Types (In-QI, Blocked)**, repeat nos. 1 - 6 and choose the corresponding stock type option button.

## Enter Physical Inventory Count on the count sheet (Excel Template)

1. Navigate to the template file location of your extracted templates.



The filepath of the extracted templates follows the format of :

**C:\Plant\_StorageLocation**

Ex. C:\ BP0X\_0001



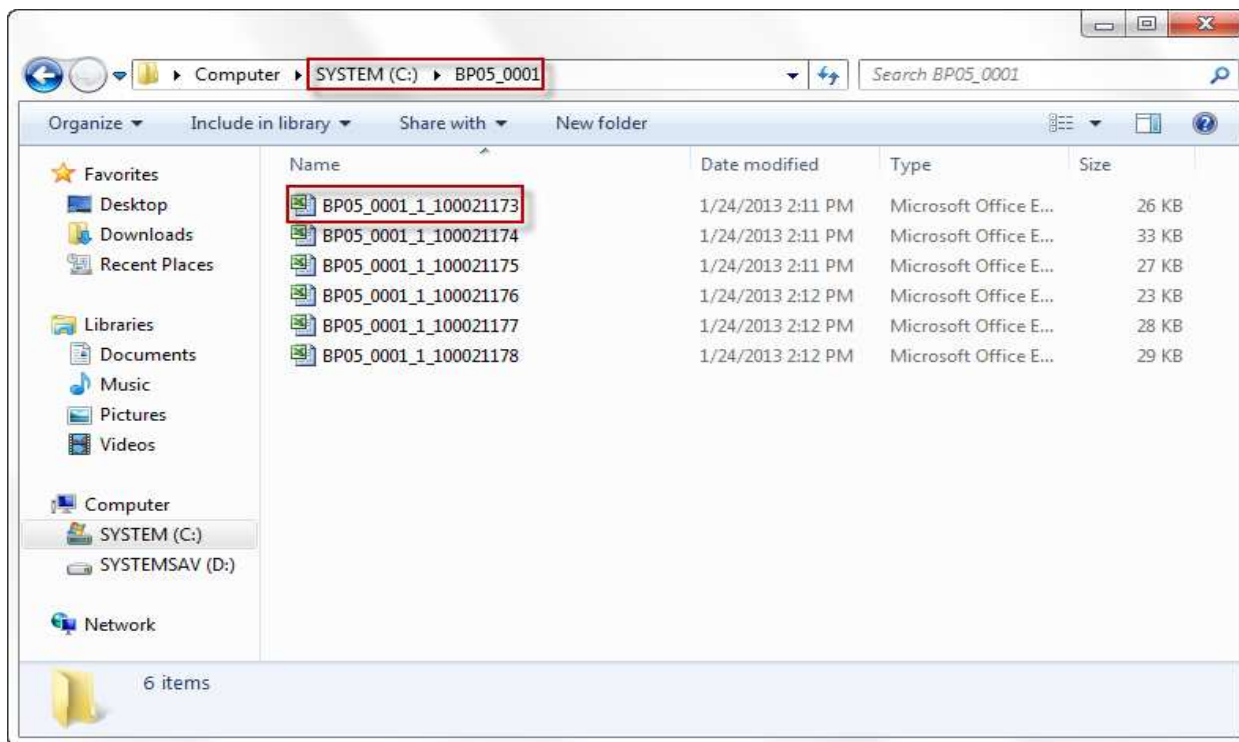
The filename of the extracted templates follows the format of :

**Plant\_StorageLocation\_StockType\_PIDNumber.**

Ex. BP0X\_0001\_1\_100012345



**Please do not change the default filename of the template.**



2. Open the excel file template to enter the physical inventory count on the selected PID.

Input the count on the **“Actual Count”** column.

Input the unit of entry on the **“Unit of Entry”** column.



**If you did not specify the unit of entry, the system will then assume and take the default base unit of measure of the material.**

|    | A                    | B                                      | C         | D                        | E          | F          | G            | H             |      |
|----|----------------------|--|-----------|--------------------------|------------|------------|--------------|---------------|------|
| 1  | PLANT                | BP05                                   |           |                          |            |            |              |               |      |
| 2  | DESCRIPTION          | Cebu Branch                            |           |                          |            |            |              |               |      |
| 3  | STORAGE LOCATION     |  | 1         |                          |            |            |              |               |      |
| 4  | DESCRIPTION          | Lager 0001                             |           |                          |            |            |              |               |      |
| 5  | PHYS. INV. DOCUMENT  |  | 100021128 |                          |            |            |              |               |      |
| 6  | PHYS. INV. REFERENCE |  |           |                          |            |            |              |               |      |
| 7  | STOCK TYPE           | Warehouse                              |           |                          |            |            |              |               |      |
| 8  | MATERIAL NUMBER      | MATERIAL DESCRIPTION                   | BASE UNIT | FREZZED/BLOCKED BOOK QTY | STOCK TYPE | ZERO COUNT | ACTUAL COUNT | UNIT OF ENTRY | VARI |
| 9  | FG00013              | FG-CDO LUNCHEON MEAT 165G X 3-MAKRO    | PAC       | 0                        | 1          |            |              |               |      |
| 10 | FG00014              | FG-CDO CORNED BEEF 175G X 3-MAKRO      | PAC       | 0                        | 1          |            |              |               |      |
| 11 | FG00016              | FG-CDO KARNE NORTE 150G X 3-MAKRO      | PAC       | 0                        | 1          |            |              |               |      |
| 12 | FG00017              | FG-CDO VIENNA SAUSAGE 114G X 3-MAKRO   | PAC       | 0                        | 1          |            |              |               |      |
| 13 | FG00018              | FG-CDO SAMBA BRAZ. C.BEEF 150GX3-MAKRO | PAC       | 0                        | 1          |            |              |               |      |
| 14 | FG00024              | FG-CDO KN HOT & SPICY 100G X 6-MAKRO   | PAC       | 0                        | 1          |            |              |               |      |

3. Press **Ctrl + S** to save the file.

## Result

1. Actual physical count has been set.
2. You can now proceed to to post the physical inventory document.