



FlowBreeze 4 Help File

Flowcharting and Process Diagramming Tools
that Leverage the Power of Excel®

FlowBreeze 4 Help File

© 2017 BreezeTree Software

All rights reserved. No parts of this work may be reproduced in any form or by any means - graphic, electronic, or mechanical, including photocopying, recording, taping, or information storage and retrieval systems - without the written permission of the publisher.

Products that are referred to in this document may be either trademarks and/or registered trademarks of the respective owners. The publisher and the author make no claim to these trademarks.

While every precaution has been taken in the preparation of this document, the publisher and the author assume no responsibility for errors or omissions, or for damages resulting from the use of information contained in this document or from the use of programs and source code that may accompany it. In no event shall the publisher and the author be liable for any loss of profit or any other commercial damage caused or alleged to have been caused directly or indirectly by this document.

Table of Contents

Foreword	0
Part I FlowBreeze Help Introduction	6
Part II Toolbar Overview	7
Part III Interactive Flowcharting Tutorial	12
1 Start Window.....	20
2 Flow Line Prompt Window.....	21
Part IV Flowchart Wizard	23
1 Parsing Rules.....	27
2 Transpose Column to Rows.....	31
3 Apply Parsing Syntax.....	32
4 Using the Flowchart Wizard with Templates.....	35
Part V Value Stream Mapping	38
1 VSM Template Generator.....	41
Part VI Template Generator	45
1 Load Template.....	50
2 Create Custom Templates.....	52
Part VII Settings	55
1 Settings - General.....	56
2 Settings - Decisions.....	58
3 Settings - Connectors.....	60
Part VIII FlowBreeze Tools	62
1 Add Shapes.....	63
2 Clear Shading.....	64
3 Create a Grid.....	64
4 Create a Symbol Key.....	64
5 Export as Picture.....	65
6 Export to Web Page.....	66
7 Extract Text.....	68
8 Find / Replace Text in Shapes.....	69
9 Flowchart Editor.....	69
10 Insert Branch.....	70

11	Insert Decision Blocks.....	74
12	Insert Group Box.....	75
13	Print Flowchart Image.....	76
14	Quick Styles.....	77
15	Re-Align Shapes.....	77
16	Select Shapes Tool.....	78
17	Symbol Styles.....	80
18	View Gridlines.....	81
Part IX Connectors		83
1	Add Connectors.....	83
2	Split Connector into Nodes.....	84
3	Straighten Connectors.....	86
4	Crossover	87
5	Work with Flow Lines (Connectors).....	88
Part X Editing Tips		95
1	Deleting Symbols.....	96
2	Inserting Symbols.....	99
3	Moving Symbols.....	103
4	Resizing Symbols.....	103
5	Rotating Symbols.....	105
6	Snapping Shapes.....	106
7	Selecting Shapes.....	107
Part XI How Do I ...?		109
1	Add an Assist Line to a Swim Lane Diagram.....	109
2	Call FlowBreeze from VBA.....	110
3	Change Symbol Styles.....	113
4	Change a Symbol Type.....	115
5	Edit Symbol Text.....	115
6	Export a Flowchart to Word or PowerPoint.....	116
7	Import and Export Settings.....	119
8	Insert a Hyperlink.....	120
9	Insert a Label.....	122
10	Using Keywords and Prefixes.....	123
11	Work with Grouped Symbols.....	126
Part XII Support		128
1	FlowBreeze Support.....	128
2	Log Files	128

3	Troubleshooting.....	129
4	How to Speed-Up Loading.....	136
5	Uninstalling FlowBreeze.....	139
	Part XIII How to Buy	142
	Index	143

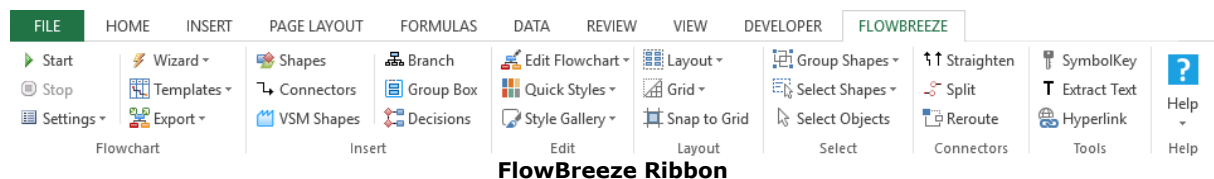
1 FlowBreeze Help Introduction

FlowBreeze is a text-to-flowchart add-in for Microsoft Excel. It will allow you to create great looking flowcharts, quickly and easily, just by typing. If you are new to FlowBreeze, the best way to familiarize yourself with it is to look through the [Interactive Flowcharting Tutorial](#), which is the first section in the table of contents, below. FlowBreeze works by automating the built-in drawing tools in Excel. As a result, the topics covered in this help file are a combination of FlowBreeze-specific features and built-in Excel features. The flowcharts are generated using native Microsoft Office shapes (also known as autoshapes).

[Click here to get started on the tutorial](#)

2 Toolbar Overview

Because FlowBreeze is an Excel add-in, the FlowBreeze features are accessible via a ribbon in Excel, as shown below.



Feature Descriptions

- Flowcharting

- [Start](#): Starts an interactive flowcharting session.
- Stop: Stops the interactive flowcharting session. This button is only enabled when a flowcharting session is in progress.
- Settings:
 - [Flowchart Settings](#): Opens the Settings window, allowing you to customize the FlowBreeze flowchart rules and formatting.
 - File Locations: Opens a form that allows you to set the directories for FlowBreeze files.
 - Import / Export Settings: Allows you to import or export settings files for standardization among computers.
 - Export Symbol List: Exports the list of active symbols, along with their prefixes and keywords, to a new workbook.
- Wizard:
 - [Flowchart Wizard](#): Scans the worksheet for text and loads it into the Flowchart Wizard to convert into a flowchart.
 - [Transpose Columns to Rows](#): Converts a vertical columns into horizontal rows for left to right flowcharts.
 - [Apply Parsing Syntax](#): Adds entry ID numbers, connector IDs,

and branch label syntax to each entry.

- Templates:

- [Create a Template](#): Loads the Template Generator, which can be used to create swim lane templates.
- [Create VSM Template](#): Load the value stream mapping template generator.
- [Load a Template](#): Loads a template onto a new worksheet.

- Export

- [Export as Picture](#): Allows you to save the flowchart and/or worksheet as a picture.
- [Export to Web Page](#): Creates an HTML file containing an picture of the flowchart.

- Insert

- [Add Shapes](#): Opens the Adds Shapes dialog to add a shape to the worksheet.
- [Add Connectors](#): Opens the Add Connectors dialog to insert one or more formatted connectors between flowchart shapes.
- [VSM Symbols](#): Opens the Value Stream Mapping dialog.
- [Branch](#): Inserts a branch structure (like an organization chart).
- [Group Box](#): Inserts a background shape to label and encompass a set of related shapes..
- [Decision Blocks](#): Opens the decision blocks tool, allowing you

- Edit

- [Quick Styles](#): Options to set color and lines styles in a single click.
- [Edit Flowchart](#): Opens the flowchart editor, which allows you to change shape types, content, and formatting.
- [Find / Replace Text](#): Opens the Find / Replace Text in Shapes tool.

- Style Gallery: A gallery of built-in shape formatting styles.
- Layout
 - Layout (drop down):
 - [Re-Align Shapes](#): Corrects any slightly jagged connector lines.
 - Align or Distribute: Align or adjust the spacing between multiple shapes.
 - Order: If shapes overlap, you can use the Bring to Front, Send to Back, Bring Forward, and Send Backward. to set how their are layered.
 - Rotate: Change the orientation of a shape.
 - Grid drop down:
 - [Snap to Shape](#): Snaps a symbol to the edge of another flowchart symbol.
 - [Create a Grid](#): Changes the column width to match the row height, creating a grid.
 - [View Gridlines](#): Shows or hides the gridlines on the sheet gridlines.
 - [Clear Shading](#): Clears any cell shading on the worksheet.
 - [Snap to Grid](#): Snaps the flowchart symbols to the worksheet gridlines.
- Select
 - [Group](#):
 - Group: Creates one shape out of many.
 - Ungroup: Splits the grouped shape back into its constituent parts.
 - Regroup: If a set of shapes has been grouped then ungrouped, they may be regrouped by selecting a single shape and clicking this function.
 - Group All Shapes: In one click it will select all the shapes and group them together into a single object.

- Ungroup All Shapes: In one click it will ungroup any grouped shapes on the sheet.
- [Select Objects](#) (white arrow): Clicking it toggles a special mouse cursor that allows you to select shapes. **Must be toggled off after use.**
- Select:
 - Select All: Selects all the shapes on the page.
 - [Selection Tool](#): Opens the Shape Selection tool.
 - Symbols: Selects only the flowchart symbols on the page (i.e., no connectors, no labels, etc.).
 - Connectors: Selects only the flow line connectors on the page.
 - Labels: Selects only the labels on the page.
- Connectors
 - [Straighten](#): Converts any elbow connector that is jagged to a straight connector
 - [Split](#): Replaces a connector with two labeled connector nodes.
 - Crossover: Insert a crossover "bump" into the selected connector.
- Tools
 - [Symbol Key](#): Generates a symbol key (shape legend), listing all the symbols used in your flowchart.
 - [Extract Text](#): Iterates through the flowchart symbols, extracting the text and creating a list of the process steps.
 - [Hyperlink](#): Add a hyperlink from a shape to another part of the flowchart, to another document, or to a URL.
- Help
 - Open Help File: Opens the local version of this help file.

- View Event Log: Opens the event log viewer to see any errors or events that FlowBreeze has logged.
- Contact Support: Opens your email client to send a support ticket.
- Register FlowBreeze: Opens the registration form to enter your license key.
- Check for Updates: Opens your web browser to the updates page to check if there is a new version available for download.
- About: Shows the current version of the software.

3 Interactive Flowcharting Tutorial

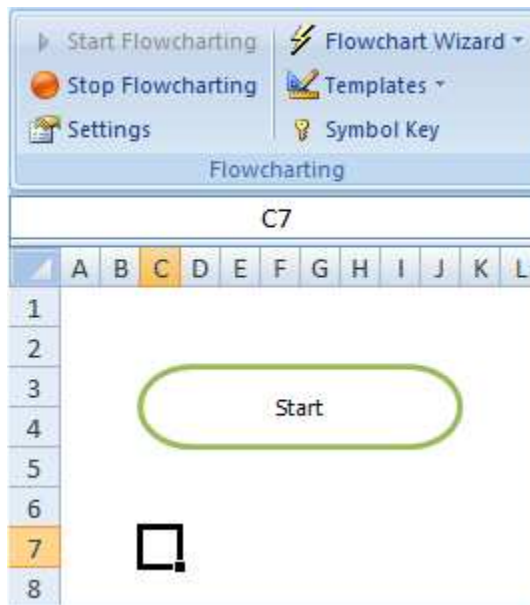
This tutorial will take you through the steps to create a flowchart using the interactive flowcharting mode of FlowBreeze. Because FlowBreeze is an Excel add-in, it will load with Excel but the interactive text-to-flowchart generation remains idle until you start a flowcharting session. It will operate on only one worksheet at a time, so you can start a flowcharting session and switch over to another worksheet without fear that it will inadvertently generate a flowchart symbol any time you edit the sheet.

Terminology

- *Flow Line Connector vs. Connector Node*: The word "connector" is often used to mean the arrow that joins two shapes. However, it is also the name for the nodes that show a jump from one place in the flowchart to another. To disambiguate between the two meanings, connector arrows are typically called "flow line connectors" or just "flow lines".
- *Symbol vs. shape*: The two terms are used interchangeably in the help file and in FlowBreeze dialogs.

Start the flowcharting session

1. The first step to creating a flowchart is to click the **Start** button. If you're running the trial version, you'll be greeted by a trial reminder and will need to click the "Continue" button.
2. You will be prompted with the Start Flowcharting window. Click **OK**. (For this tutorial, we will keep all of the default settings. For more information on the options, see the [Start Window](#) section.)
3. FlowBreeze will generate a Terminator symbol, as shown below.



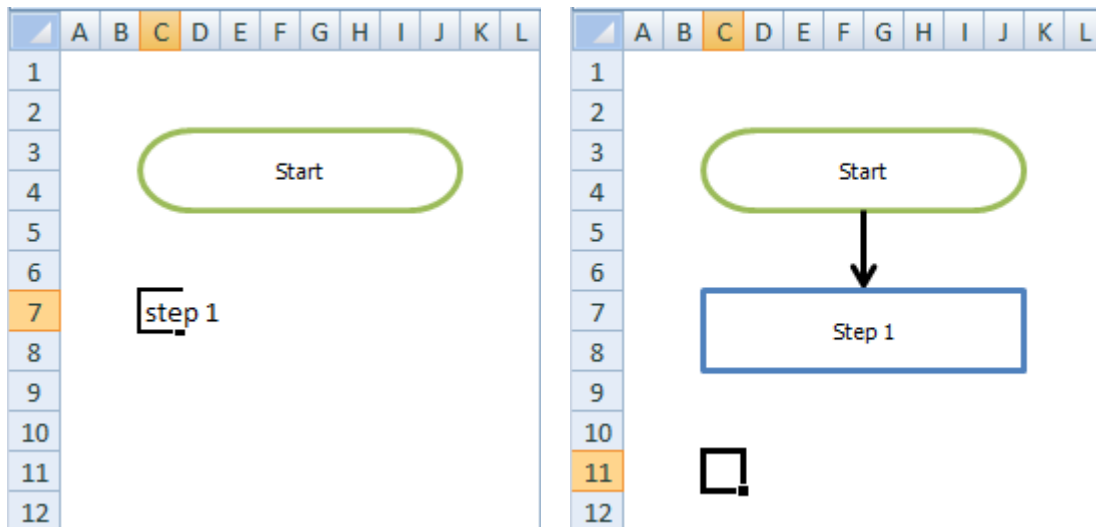
The cursor is positioned below the symbol, ready for the next entry. Also, the Start Flowcharting button is now disabled and the Stop Flowcharting button has become enabled.

Add symbols

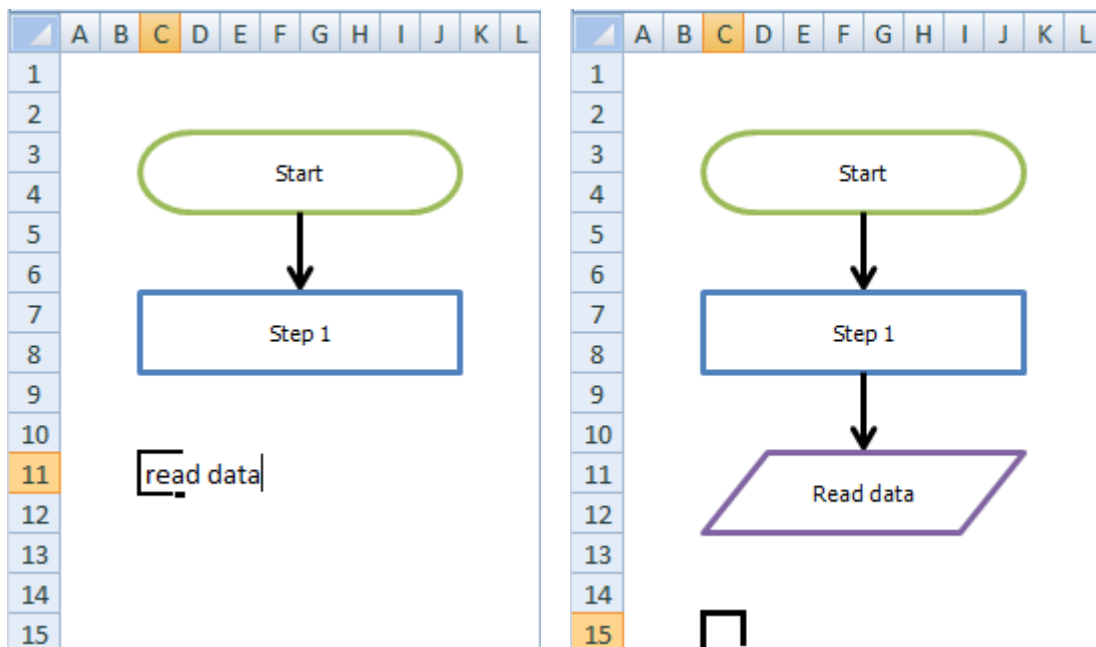
FlowBreeze watches for changes in worksheet content to generate symbols. Anytime you edit a cell, that will trigger a "change event". These change events are what FlowBreeze monitors to know that it needs to kick into action. In this step, we will show you three things:

- Using the basic text-to-symbol technique.
- Creating a symbol using a keyword.
- Creating a symbol using a prefix.

Type "step 1" into the cell and press Enter. As show below, FlowBreeze generates the default flowchart symbol - a process shape (rectangle). Also note that the first letter of "step 1" was automatically capitalized.



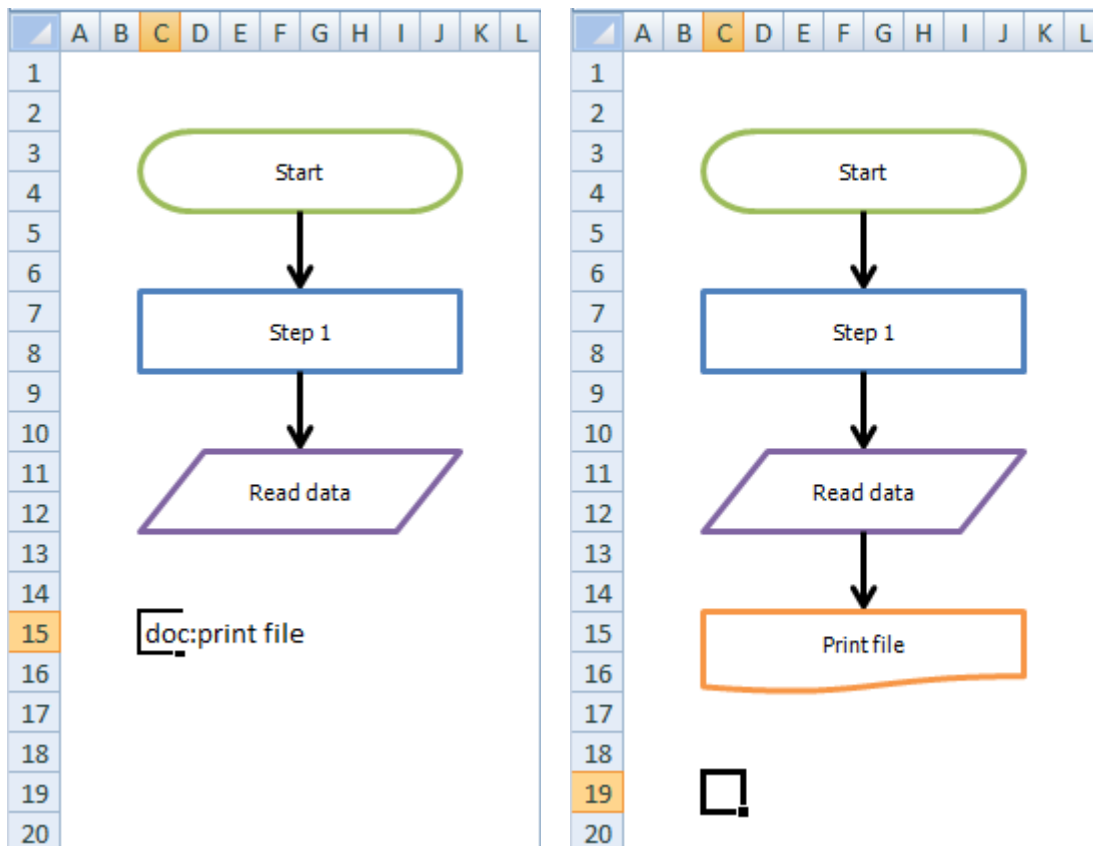
Next, we will generate a symbol using a [keyword](#). Keywords are special words that you assign to symbols and can be customized in the [Settings](#) window. The word "read" is preset as a keyword for the data symbol, so you can type "read data" into the next cell to create the Data symbol, as shown below.



Now, we will generate a symbol using a [prefix](#). Like keywords, prefixes are special entries that you assign to specific symbols and can be customized

in the [Settings](#) window. Prefixes are placed at the start of an entry and must end with a "prefix delimiter". The delimiters can be customized on the [General](#) tab in the Settings window.

Enter "doc:print file" in the next cell. Since "doc:" is preset as a prefix for the Document symbol, the prefix is stripped out from the entry and just the words "Print file" are placed in the Document symbol.

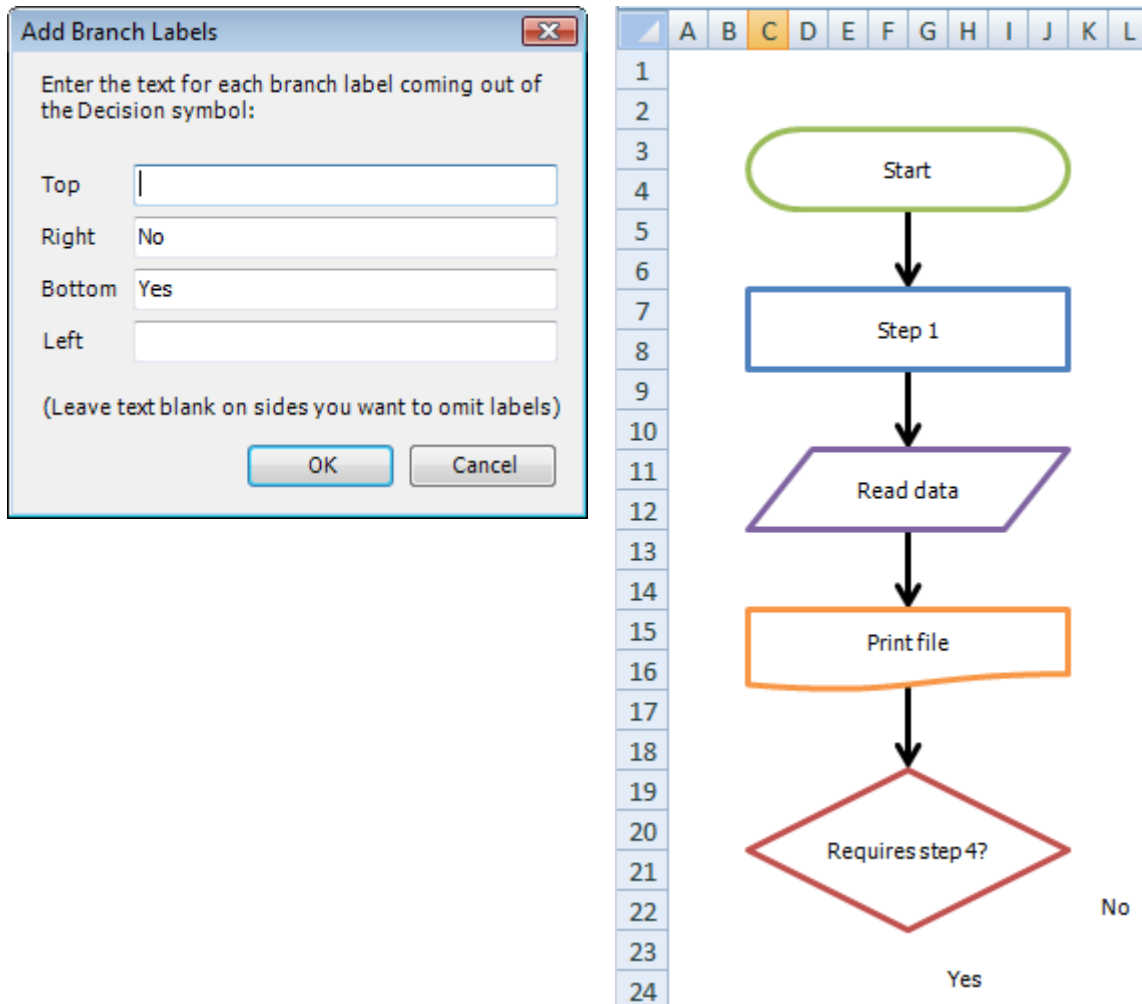


Creating a decision symbol

Decisions are symbols that indicate a fork in the process. One feature of FlowBreeze is that any entry containing a question mark (?) will generate a Decision symbol and branch labels, e.g., Yes/No, Pass/Fail, etc.

Enter the text "requires step 4?".

FlowBreeze will add the Decision shape and prompt to add branch labels. (*Note the default right label is "No" and the default bottom label is "Yes"*). The labels are then added next to the decision, as shown below. You can disable this feature or change the default labels in on the [Decisions](#) tab of the Settings window.



Manually adding labels

For the decision, you were prompted to add labels, but there are times when you might want to add a label yourself. These are covered in detail in the [Insert a Label](#) section.

Adding connector nodes

On-Page Connector nodes are circles that show a jump from one part of the flowchart to another. On the General tab of the Settings window, FlowBreeze can be configured to add a connector node when a 1 or 2 character ALL CAPS entry is made (e.g., A, B, AA, B1).

In the "Final sample flowchart" picture below, we added a "Step 4" in the same way we added "Step 1". Then we entered "A" in cell C30 (after Step 4) to create a connector node. The connector node is automatically centered to the shape above it.

We will now continue the flowchart in column Q of the worksheet. To show continuance, another node is added by typing "A" in cell Q3. Once again, the connector node is added and then centered based on the standard shape width. This will position the second A node in cell T3.

Adding Connectors (aka, arrows or flow lines)

In most cases, FlowBreeze will automatically detect the last shape and add the connector arrow. However, if FlowBreeze cannot detect which symbol you want to add a connector from, it will prompt you with the Add Flow Line Connector window. This short tutorial doesn't demonstrate that, but you can see the [Flow Line Prompt](#) section for more details.

In other cases, you may want to manually add a connector. To demonstrate, type "step 5" in cell Q7 to create a new shape. Now we're going to add a connector from the "No" branch of the decision "Requires step 4?" by using the Add Connectors task pane by following these steps:

- Click Add Connectors from the FlowBreeze toolbar.
- In the From Shape column, select "Requires step 4?"
- In the To Shape column, select "Step 4".

- Click the Add Connector button on the task pane.

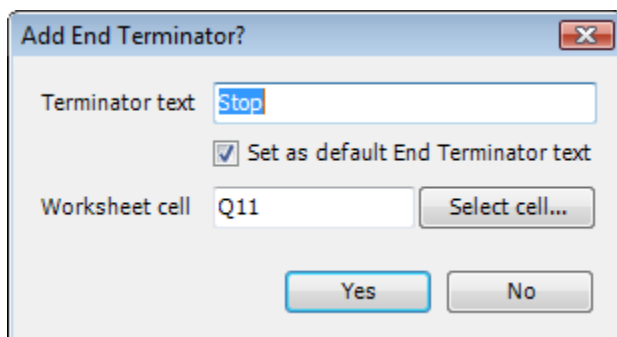
A new connector will be added between the shapes, as shown in the "Final sample flowchart" picture below.

Stop the flowcharting session

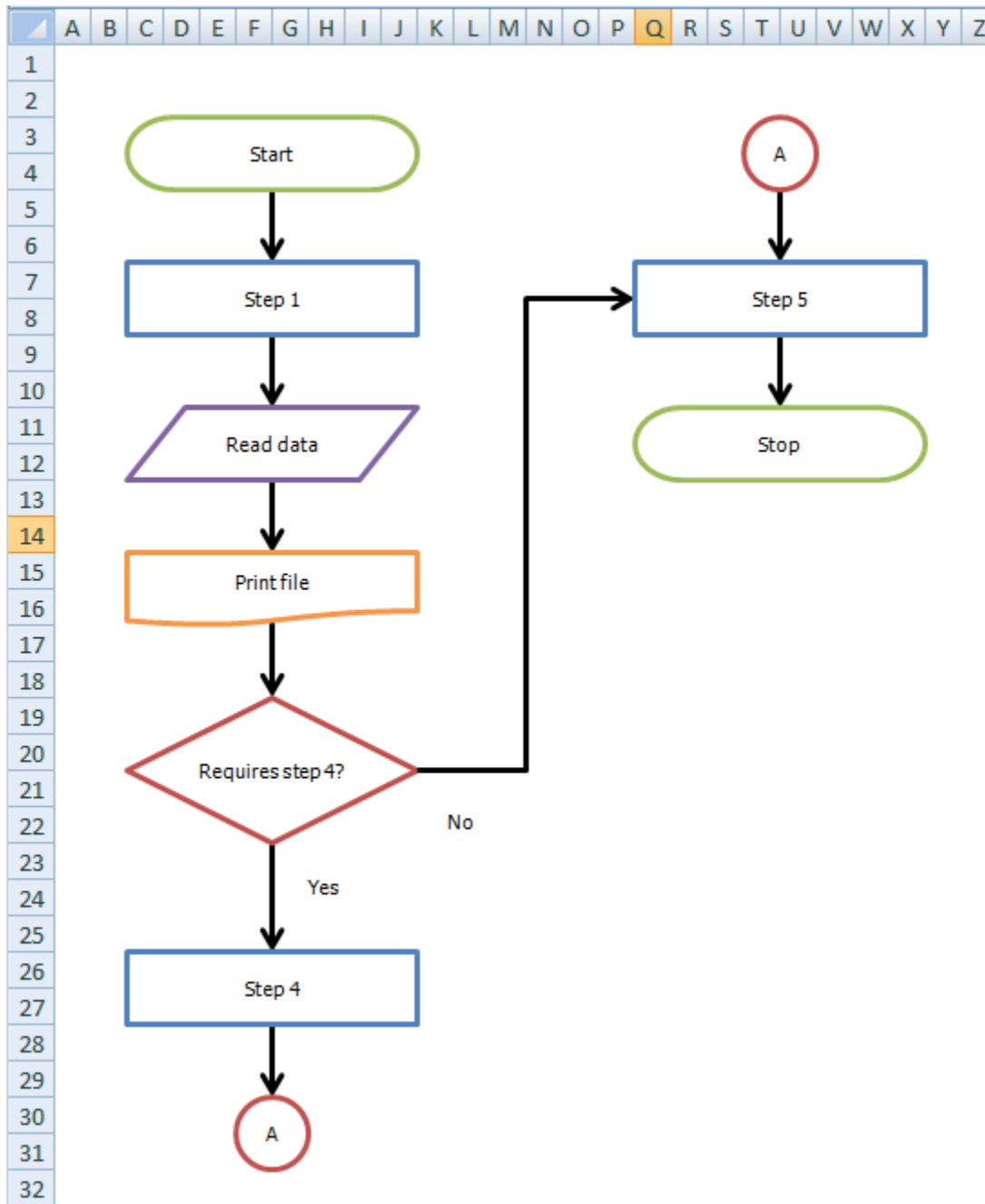
To end the interactive flowcharting session, click the **Stop** button on the toolbar. Before you stop flowcharting, it's a good idea to select the cell where you want to place the stop Terminator. FlowBreeze will use this as the default location to place the Terminator symbol. In our example, you will place it beneath "Step 5".

Upon clicking the Stop button, FlowBreeze will display the "Add End Terminator?" window, shown below. In this window you can change the text (with the option to make the new text the default for the next time you flowchart), and you can change the cell where the Terminator should be added by clicking the Select Cell button. When you click **Yes**, the Terminator is added and the flowcharting session is completed.

Once the session is topped, FlowBreeze will no longer generate symbols from your entries, meaning you can go back to using the worksheet for normal Excel activities.



Add end terminator window



3.1 Start Window

When you click the "Start" button, FlowBreeze will prompt you for a few options before the flowcharting session begins.

Drawing Area

The Drawing Area section lets you specify how you want the worksheet to look when you are flowcharting. The settings are described as follows:

- Create a grid: Changes all column widths to match the row height, creating a grid on the sheet.
- Preserve existing sheet layout: Leaves worksheet as-is, and not change the column widths.
- Load a template: Loads a template. Templates are covered in the [Template Generator](#) section of the help file. If you choose to load a template, it will be added as a *new worksheet* in the current workbook.

Start Terminator

- Add a terminator to the beginning of the flowchart: Adds a Terminator symbol to the start of your flowchart.
- Terminator text: As implied, it's the text to appear in the Terminator symbol, e.g. "Start".
- Worksheet cell: The location on the sheet where the terminator will be placed. Click "Select cell" to change the location. If you choose *Load a template*, there is a good chance that you need to *change this cell*, especially if your template has swim lanes.

Tip: It's worth noting that the first step in a flowchart does not need to be generic text such as "start" or "begin". Many flowcharting tutorials advise that the first step be the "trigger action" that kicks off the process. However, at their core flowcharts are communication tools,

and if your flowchart will be read by a general audience, keep in mind that many people viewing it may never have read a flowchart. They may have no idea what a trigger action or a terminator symbol is. Instead, they'll be scanning the diagram trying to figure out where the process starts. So matching the text to the audience is advised.

Page Settings

If you click "Page Settings" a sub-dialog will open a sub-dialog for setting the paper size and orientation, as well as the following two options:

- Hide Excel gridlines: This will create a plain white background, hiding Excel's built-in row and column gridlines.
- Show entry guidelines: When you are flowcharting, FlowBreeze will shade a horizontal row and vertical column to indicate where the next line of text should be entered. If you enter your text along a shaded line, the symbols will be automatically aligned and a flow line will be added automatically as well. Note: If you select this option, **any shading on the worksheet will be cleared.**

Start

When you click the **OK** button, this window is closed and a flowcharting session will begin.

3.2 Flow Line Prompt Window

When you're working with FlowBreeze in interactive flowcharting mode, connectors (flow lines / arrows) are added from the last shape to the new shape automatically. However, there are some cases where FlowBreeze

will not automatically add a flow line:

- The new shape is not in the same row or column as the last shape.
- There is a 3rd shape in between the last shape and the new shape.
- You delete the last shape created.
- Flowcharting was stopped and then re-started.

Whenever any of these cases occur, FlowBreeze will prompt you to add a flow line, as shown in the image below. The list contains all the flowcharting shapes contained on the worksheet, along with an icon showing the symbol type, the worksheet location of the symbol, and the text (if any) that it contains.. The items are sorted by the distance from each symbol to the newly added symbol.

How to Use

1. Select the text of the shape *to connect from*.
2. Optionally, click the "Line Properties" toggle button and customize the line style and connection settings.
3. Click OK to add the connector or Cancel if you don't wish to add one.

4 Flowchart Wizard

The **Flowchart Wizard** is a tool that transforms a sheet of text into a flowchart in just a few steps. With it, you can enter all the process steps into worksheet cells, and the Flowchart Wizard will load all the text into a form that lets you assign symbol types, formatting, and flow line routings to each process step. It will then generate a flowchart from that information. You may need to make some adjustments to the flowchart layout and flow line routings, but overall it cuts the time to create a flowchart considerably.

Pre-Layout

Before running the wizard, layout the text for the flowchart on the sheet. The picture below shows a sample worksheet with the text for the process steps entered into cells. When you enter the process text, the goal is to arrange it roughly how you want the flowchart to be organized. The wizard allows for two types of input - normal (shown below) and [parsed](#), which allows for advanced control over connector routings. (See [Parsing Rules](#) for more detail.)

	A	B
1	start	A
2	step 1	step 5
3	step 2	step 6
4	input 1	step 7
5	step 4	step 8
6	decision 1?	documents 1
7	A	stop
8		
9		

Picture 1 - Sample Flowchart Text

Running the Flowchart Wizard

Click **Flowchart Wizard > Flowchart Wizard** on the toolbar to launch

the wizard. The first page of the wizard dialog allows to set some preferences for the flowchart.

Step 1 - Set Options

- **Input Text Source:** FlowBreeze gets the text for the flowchart steps off of the currently open worksheet. If you only want to use some of the text, click "Only text from range" and then select the range to import the text from.
- **Template Settings:** If you are using a swim lane template, this option helps ensure that the flowchart will be generated in the current lanes. See [using the Flowchart Wizard with Templates](#) page for more details.
- **Input Text Options:**
 - **Ignore Keywords:** If checked, all entries will be set to Process symbol types (i.e., rectangles) by default.
 - **Replace | character with line break:** When checked, the wizard will put a hard line break wherever "|" is encountered. (The | character is commonly called a "pipe" and is located above the "\" character on the keyboard.)
 - **Add default decision branch labels:** If checked, the default branch labels specified in the Settings will be added to the output. If branches are specified in either the input text or the connector section of Step 2 (below), then the defaults will not override them.
- **Flowchart Layout:**
 - The "Top to bottom" and "Left to right" options determine the default routing direction of the connectors.
 - **Uniform Symbol Height:** For left to right flowcharts, you can choose to make all the symbols the same height.
 - **Connector style:** Choose the style for the connector lines from the drop down. (The styles for the shapes are set in Step 2 of the

wizard.)

- Spacing Between Shapes:
 - The Rows and Columns settings specify the minimum spacing between shapes.
 - If you are using a swim lane lanes, the Columns setting is ignored for vertical swim lanes, and the Rows setting is ignored for horizontal swim lanes.
 - Selecting "Keep existing layout" will prevent the wizard from adding any additional spacing between shapes.
- Flowchart Output:
 - You can choose to output to the current worksheet or have FlowBreeze generate the flowchart in a new sheet, preserving the original content.
 - If you overwrite the existing sheet, you can check the option to keep the existing shapes. This is useful when using templates with the wizard.
 - Link shape text to input cells: If checked, the content of each shape is linked to it's original cell. If the text in the cell is changed, the shape's text will update automatically.

Step 2 - Set Symbols, Styles, and Connectors

When you click **Next >**, the Flowchart Wizard will display all the entries in **Step 2**. This step allows you to edit the text, change the symbol type, change the style, and add connectors and branch labels for each entry.

Entry list

- ID: This column is for reference when setting the Connectors. If you do not use the advanced parsing syntax, the ID numbers will auto-generated.

- **Symbol:** This column shows the symbol type assigned to the entry.
- **Style:** This column shows the style assigned to the entry.
- **Text:** This is the text that will be placed into the symbol. If any mistakes were made on the original sheet, they can be corrected here.

Edit Symbol and Styles

Beneath the entry list are two images showing the symbol and the formatting style for the currently select entry. Clicking the button beneath either will prompt for a new symbol or style, respectively.

Connector Arrows

This list allows you to specify outgoing connectors for each item. When you click the **+ button**, a new line is added to the connector list, with the following fields:

- **Connect To:** Allows you to set the ID to route a connector arrow to.
- **Side:** Specify the side the connector will be routed from. (*required if branch label is set, otherwise optional*)
- **Branch Label:** Specify a label placed next to the connector. (*optional*)

Generate flowchart

Click OK and the wizard will generate a flowchart. Some shapes may need to be repositioned to achieve the layout you desire.

Related Topics

- [Transpose column to rows](#) tool
- [Apply parsing syntax](#) tool
- [Editing tips](#)

- [Moving Symbols](#)
- [Working with Flow Lines](#)
- [Using the Flowchart Wizard with Templates](#)

4.1 Parsing Rules

The Flowchart Wizard accepts a syntax that allows for parsing to set connectors and branch labels. The basic syntax is Id, Entry Text, Connector(s), where each part is defined as follows:

Entry Id: A unique number. (optional)

Entry Text: The text that will go into the flowchart symbol. (Required)

- The text can contain [Prefixes and Keywords](#).
- Text containing commas should be enclosed in quotes, as in "This is an entry, and it has a comma."
- Line breaks can be inserted into the text by placing a "|" character at the breakpoints.

Connector(s): (Optional) One or more Id's to connect a line to.

- Connectors can simply be a comma separated list of the Entry Id's that you want to route a connector to.
- Connectors can also include the connection sides and branch labels separated by colons, as in connect_to_id: side: label.
- The acceptable sides are top, right, bottom, and left, and they can be abbreviated t, r, b, and l, respectively.
- If the label contains a comma, the label portion must be enclosed in quotes.

Hyperlinks: (Optional)

- The hyperlink must be in the form "link:address", where address is a URL, external file, or location within the current workbook.

- If linking to another file, you must use the full path to the link.
- If the link is a URL, accepted formats include http://, https://, ftp://, and mailto:.

Technical note on Entry Id

The Entry Id is just a placeholder using to map any connector entries. The Flowchart Wizard imports the data from the spreadsheet and stores the information along with the row and column of each entry. On the first screen of the wizard, you can set the flow direction - top to bottom or left to right. Based on this direction, the data is sorted either by column then row or row then column. The ID's shown on the second step of the wizard are based on the sort order.

Accepted formats

Format	Notes
text	Automatically assigns id; assumes connector routes to next entry
text, connect_to_id	Automatically assigns id; if you specify a connect_to_id, the corresponding id must be specified for another entry.
id, text	Assumes connector routes to next entry
id, text, connect_to_id	
id, text, connect_to_id,	

connect_to_id, connect_to_id, ...	
id, "text, that includes a comma", connect_to_id	(Safe) Most of the time, FlowBreeze can detect commas included in text passages versus the commas that delimit the sections of the parsing syntax, but enclosing this text in quotes will ensure that it is parsed correctly
id, text that includes a line break, connect_to_id	The ' ' symbol will be replaced with a hard line break within the flowchart shape
id, text, connect_to_id, connect_to_id, ...	
id, text, connect_to_id:side: label	
id, text, connect_to_id:side: label, connect_to_id: side:label, ...	
..., link:address	A link can be added after any of the above formats, and it must be the last segment of the entry

Examples

Example	Description
Unload pallet and stock items	Creates a process step. When loaded, the wizard will assume a connector will be routed to the next step.
2, Unload pallet and stock items, 3	Creates process step connecting to step 3
2, Unload pallet stock items, 3	Creates process step connecting to step 3, with a hard line break placed as follows: Unload pallet stock items
2, Unload pallet and stock items, 3, 7	Creates process step connecting to steps 3 and 7
2, "Unload pallet, and stock items", 3	Creates process step with embedded comma connecting to step 3
7, Is shipment in system?, 8:bottom:Yes, 3:left:No	Creates decision symbol connecting to steps 8 and 3. The connector to step 8 comes out of the bottom of the decision symbol and is labeled "Yes". The connector to step 3 comes out of the right side of the decision symbol and is labeled "No".

Unload pallet and stock items, link: Sheet2!A1	Creates a process step, and clicking on the shape will navigate to the address (in this example, it would go to cell A1 on Sheet2).
--	---

4.2 Transpose Column to Rows

The Transpose Columns to Rows feature will take a vertical column (or columns) of entries on the worksheet and transpose it into a series of horizontal rows. This tool is intended as a pre-processor for the Flowchart Wizard, to allow you to easily layout out the entries for a left to right flowchart before running the wizard.

Fields

- Number of columns: This field determines how many entries will be placed in each horizontal row. The two pictures below show the process steps before and after transposing columns.
- Output Location: Option to preserve original content or overwrite it with transposed content.

Before Transpose Columns to Rows

	A	B	C	D	E	F
1						
2	Establish the Team					
3	Describe the problem.					
4	Develop an Interim Containment Action					
5	Define, Verify Root Cause					
6	Choose / Verify Permanent Corrective Action					
7	Implement / Validate Permanent Corrective Action. Valid?					
8	Prevent Recurrence					
9	Recognize the Team					

After - Number of columns = 3

	A	B	C
1	Establish the Team	Describe the problem.	Develop an Interim Containment Action
2	Define, Verify Root Cause	Choose / Verify Permanent Corrective Action	Implement / Validate Permanent Corrective Action. Valid?
3	Prevent Recurrence	Recognize the Team	

4.3 Apply Parsing Syntax

The **Apply Parsing Syntax** tool will take plain text entries and add entry ID's, connector ID's, and branch label syntax.

Why Is This Tool Needed?

Running this tool is *not required* before using the Flowchart Wizard. However, it is useful for complex processes. By applying the parsing syntax before running the Flowchart Wizard, you can edit the connector routings and branch labels on the worksheet instead of in the Flowchart Wizard dialog. Spreadsheets are easy to edit, so applying the syntax before running the wizard makes fine tuning the entries much easier.

Fields

- **Direction:** This determines how the entries on the worksheet will be numbered.
- **Output:** You can output the parsing syntax to a new worksheet or overwrite the existing one. There is no undo operation if you overwrite the existing sheet, so outputting to a new worksheet is a recommended precaution.

Example

The following picture shows a simple process before running the Apply parsing Syntax tool:

	A	B
1	Start	A
2	Establish the team	Choose / verify permanent corrective action
3	Describe the problem	Implement / validate permanent corrective action. Valid?
4	Develop an interim containment action	Prevent reoccurrence
5	Define, verify root cause	Recognize the team
6	A	Stop
7		

Sample process steps before applying parsing syntax

After running the tool, the text has been transformed as shown in the following picture:

	A	B
1	10, Start, 20	70, A, 80
2	20, Establish the team, 30	80, Choose / verify permanent corrective action, 90
3	30, Describe the problem, 40	90, Implement / validate permanent corrective action. Valid?, 80:right:No, 100:bottom:Yes
4	40, Develop an interim containment action, 50	100, Prevent reoccurrence, 110
5	50, "Define, verify root cause", 60	110, Recognize the team, 120
6	60, A	120, Stop, 130
7		

Process steps after applying parsing syntax

Things to note in the above picture:

- Each entry has an ID placed before the text.
- Each entry has connectors identified after the text.
- Any entries containing commas are enclosed in quotes.
- Decision shapes have default connector and branch label syntax added.

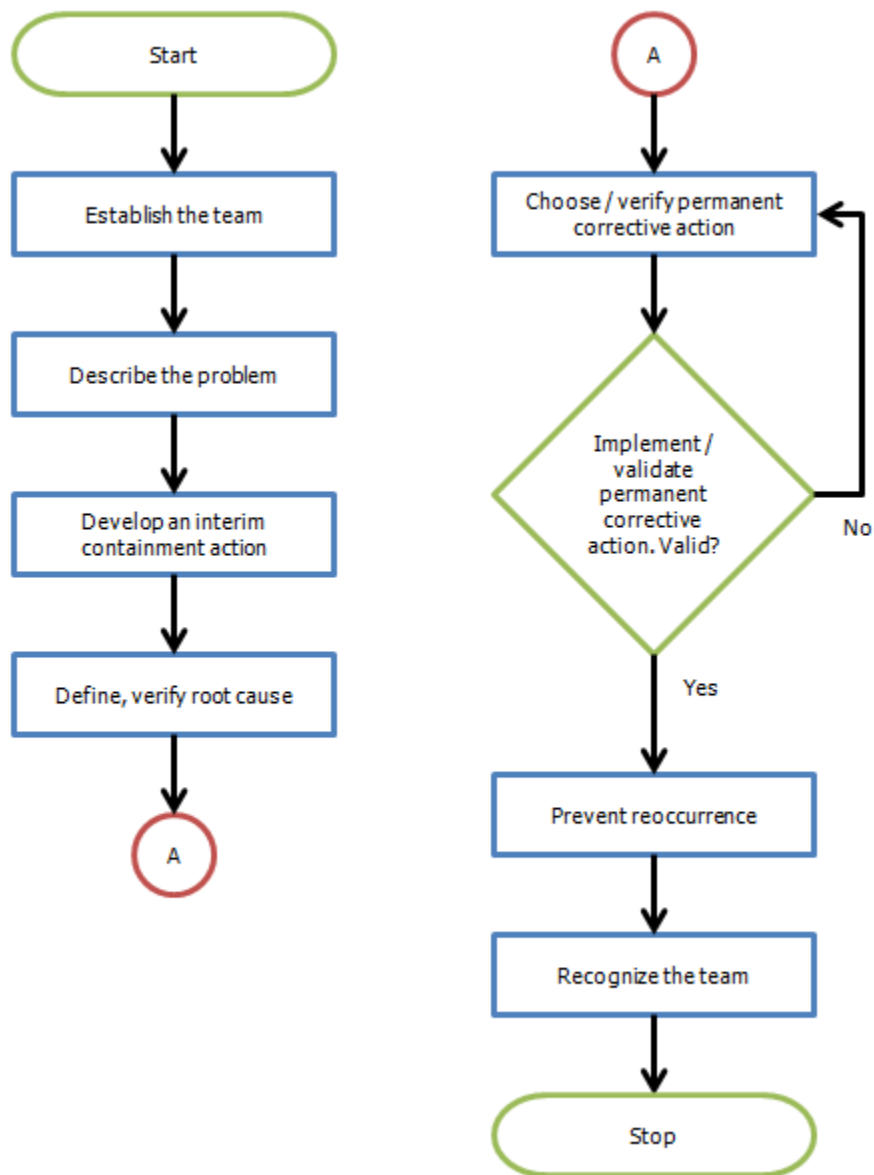
- There is a comment added to the Decision cell stating that it will need to be edited, because there is no reasonable way for FlowBreeze to guess where the decision branches should be routed.

Decisions need to be edited:

Entry 90: This tool assumes that you will want at least two lines routed out of a decision shape. It adds two stubs, both pointing to the next entry. In this example, we replaced the "100:right:No" connector with "80:right:No", in order to generate the sample flowchart below.

Example Output

Finally, we can run the [Flowchart Wizard](#), and the wizard will generate the following flowchart:



Generated Flowchart

4.4 Using the Flowchart Wizard with Templates

There are several additional steps that need to be done to ensure that the resulting flowchart layout works when using the Flowchart Wizard with a template.

Shape Width

If the you are using a Letter sized template (8-1/2x11 or A4) with three or more swim lanes, you may need to change the default shape width in the FlowBreeze settings. For example, a 3-lane template generated for a letter-sized page will have lane widths of 10, 10 and 9. The means that the smallest lane (9 grid columns) will accommodate a shape width of 7 (with a one column padding on each side).

To change the maximum shape width:

- Click Settings from the FlowBreeze toolbar.
- On the symbol List tab, click "Edit Dimensions".
- Change the Width setting and click OK to close the Dimensions form.
- Click OK on the Settings form.

Input

The image below shows the text in a swim lane template pre-arranged prior to running the Flowchart Wizard. For best results:

- For the shape to be generated in a given lane, the text should be in that lane.
- The text should be offset within the lane to ensure that the left or top edge of the shape does not abut the swim lane diver lines.
- You do not have to space the rows apart as they are shown below, but typically the more finely tuned the input arrangement, the less you will need to adjust the layout after running the wizard.

	Stage 1	Stage 2	Stage 3
5			
6			
7			
8			
9	start		
10			
11			
12	step 1		
13			
14			
15			
16			
17	step 2	step 3	
18			
19			
20			
21		step 4	step 5
22			
23			
24			
25			stop
26			
27			

Running the Flowchart Wizard

In Step 1 of the wizard, you will need to check the "Input uses a swim lane template?" option. This will result in the flowchart being added to the existing template sheet instead of a new worksheet. Note: In the Spacing Between Sheets settings, the Columns setting is ignored for vertical swim lanes, and the Rows setting is ignored for horizontal swim lanes.

The remainder of the wizard operations are the same as running it without a template.

5 Value Stream Mapping

Value Stream Mapping tools can be accessed via the VSM Symbols button on the FlowBreeze toolbar. In addition to the VSM symbols, FlowBreeze also features a [VSM Template Generator](#), which is covered [here](#).

Accessing the Value Stream Mapping Symbols

Clicking the VSM Symbols button opens the Value Stream Mapping Symbols dialog. To add a VSM symbol to the worksheet, follow these steps:

1. Select the worksheet cell where you want the symbol to be placed. For Value Added-Time and Non Value-Added Time blocks, the selection can span multiple cells.
2. Click on the symbol to add.
3. If there are any Options associated with the symbol, enter them as needed.
4. Click the Add Symbol button on the dialog.

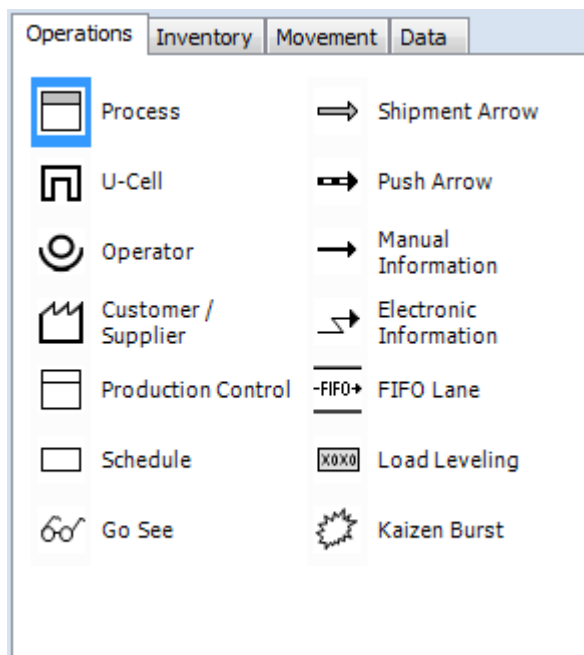
Notes:

- If a symbol has no Options associated with it, you can simply **double-click the icon** to add it to the worksheet.
- The symbol text font is set in the [Settings](#) screen.

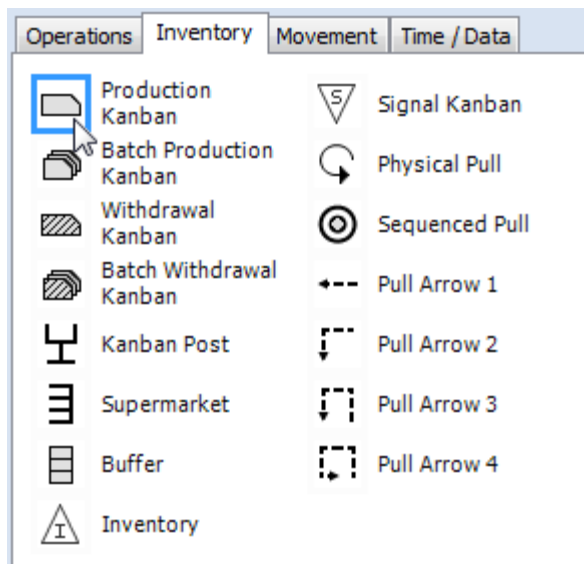
Available symbol set

FlowBreeze features Operations, Inventory, Movement, and Data symbols, as shown in the images below.

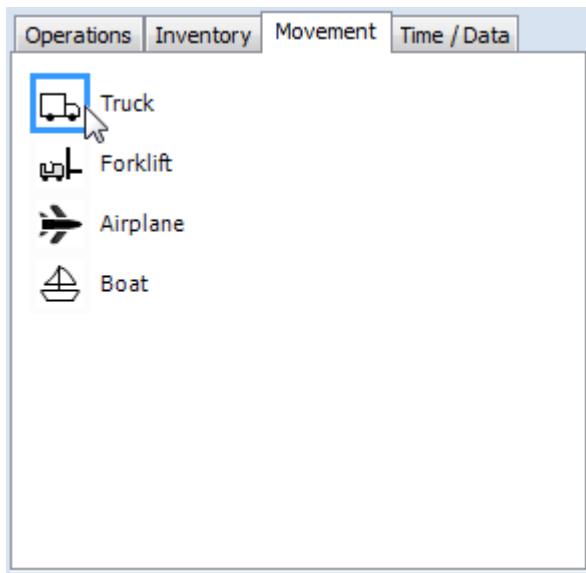
Operations Symbols



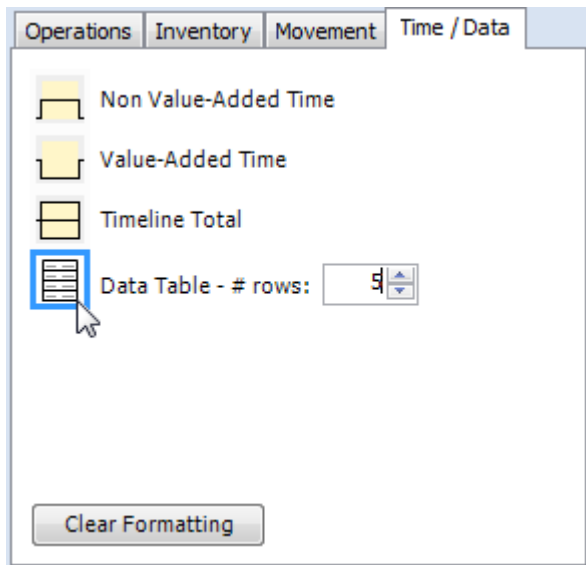
Inventory Symbols



Movement Symbols



Time Data Blocks



VSM Symbol options

When you click one of the symbols above, the following options fields are shown based on the symbol type.

- Title and text: Production Control and Process symbols have separate title and text fields.
- Text: numerous shapes allow you to add text.

- Angle: You can preset the angle for arrows. Clicking the angle selector will snap to 45 degree increments, and dragging the selector will snap to 5 degree increments.
- Data table size: set the number of rows in the data table.
- Pull arrow direction: set the direction to left-to-right or right-to-left.

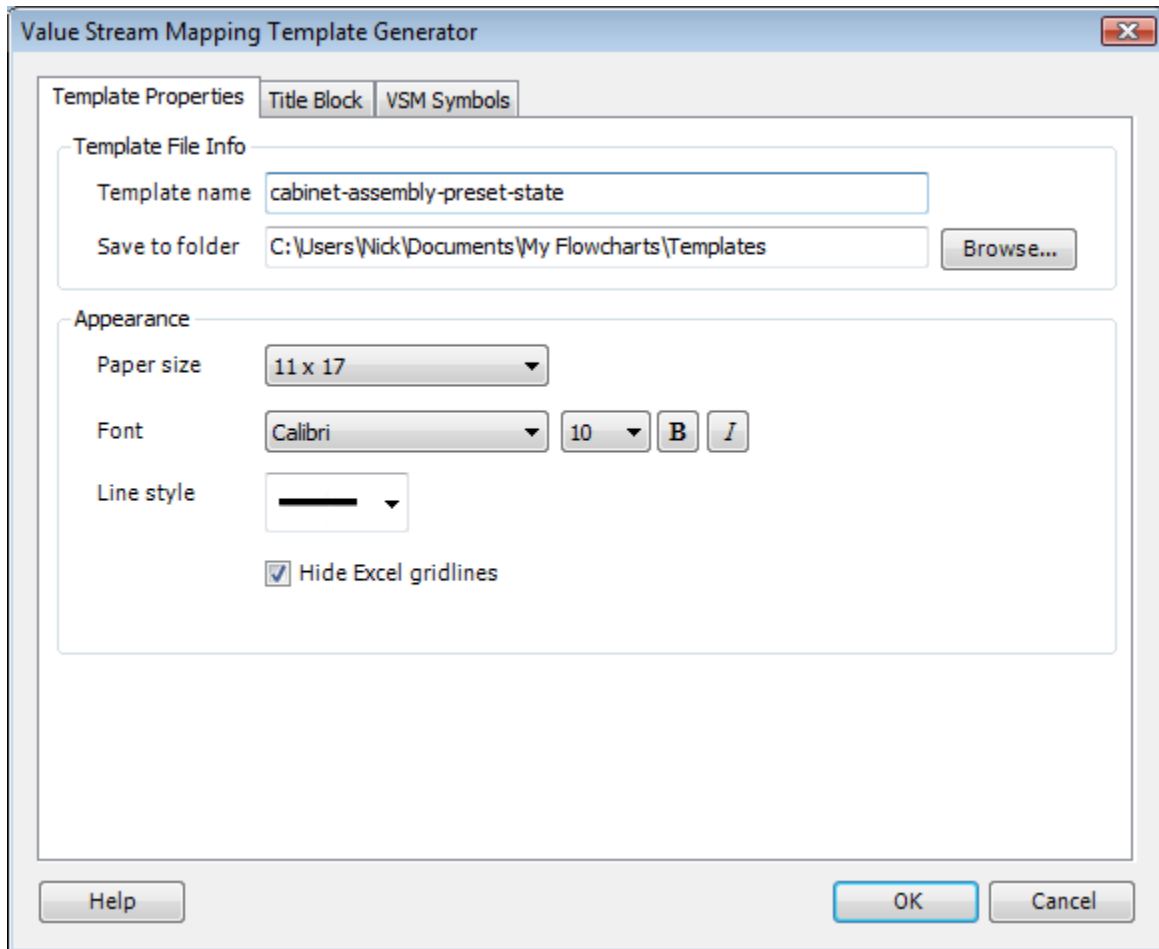
Clear Formatting: The timelines and data tables are created by formatting cells with borders and shading. As the name implies, the Clear Formatting button clears the borders and shading.

5.1 VSM Template Generator

To create a **Value Stream Mapping** template click Templates > Create VSM Template from the toolbar. The VSM Template Generator allows you to design reusable Value Stream Mapping templates.

Template Properties tab

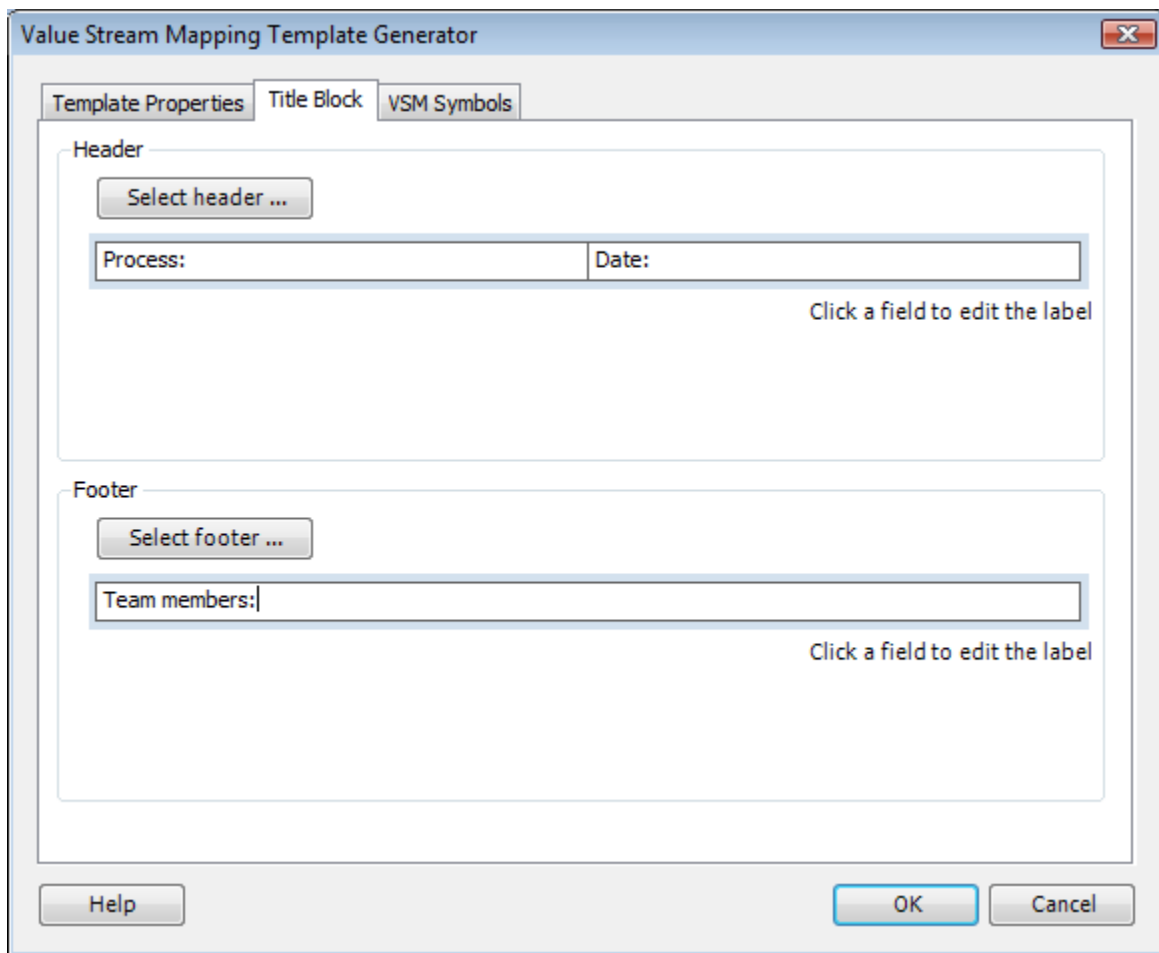
- Template name: The file name that the template will be stored as.
- Template folder: The folder that the templates will be stored in. The default location is "\\My Flowcharts\\Templates" under your Documents folder. FlowBreeze does not use the built-in template folder in Excel because that folder is hidden in some versions of Windows.
- Paper size: supports 11x17, A3, 8.5x11, and A4 paper sizes. The page orientation is *always landscape*.
- Font: Sets the font for the title block fields and swim lane labels.
- Line style: Sets the line color and thickness for the title block and swim lane outlines.
- Hide Excel gridlines: Toggles off the gridlines on a worksheet.



Title Block tab

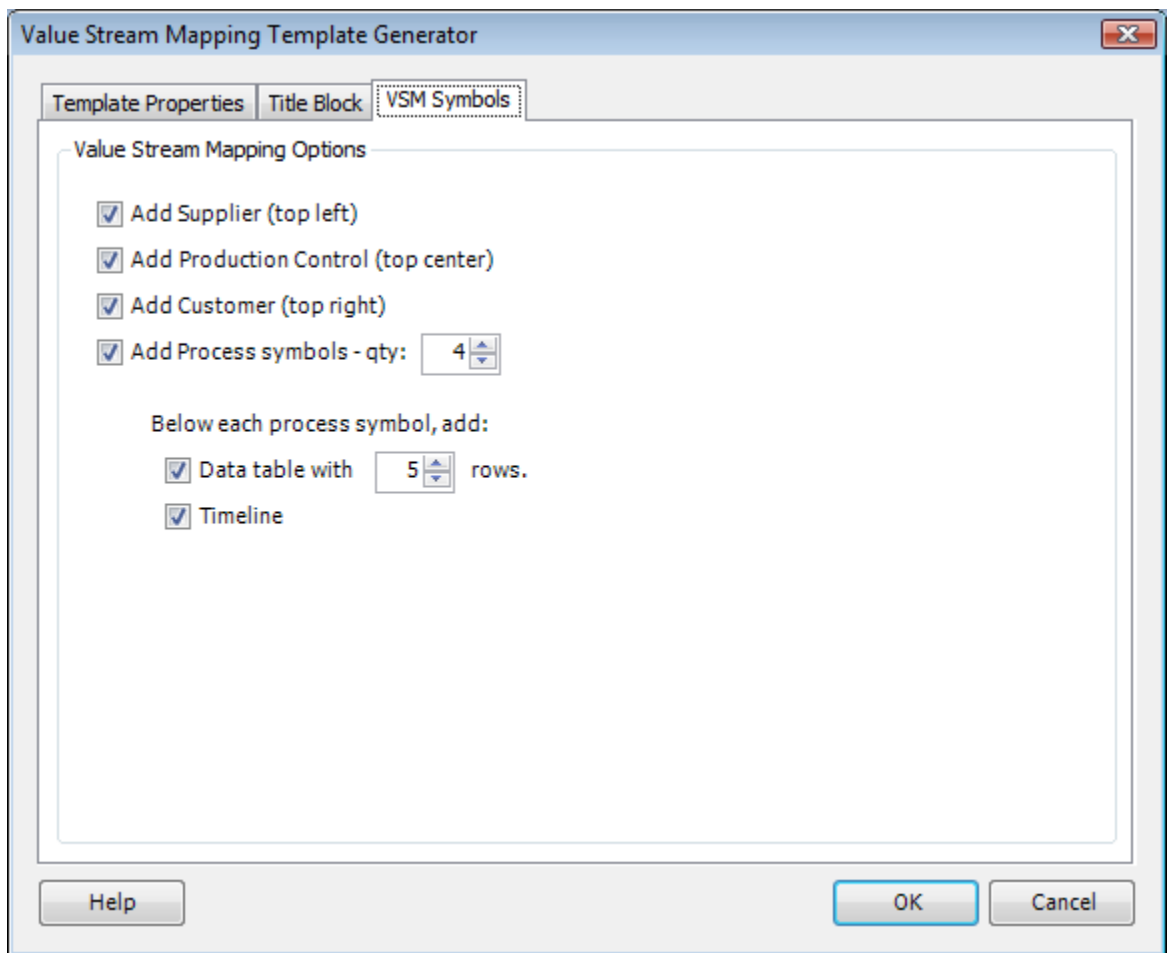
The title block tab is the same as in the Flowchart Template Generator.

- Select header: Clicking this will open the Select Header window shown below left. In this sample, we've selected the "3 fields w/ logo" option.
- Select footer: Clicking this will open the Select Footer window shown below right. In this sample, we've opted for no footer.
- Import logo: Clicking this will allow you to import your logo into the template. Logos are automatically resized to fit the available space.



VSM Symbols

The VSM Icons tab lets you preset basic symbols, including supplier, production control, customer and process symbols. The maximum number of process symbols for each template is set based on the paper size. Below each process symbol, you can choose to add data tables and timeline segments. Value-added timeline segments are added below the processes, and non value-added timeline segments are added between each symbol.



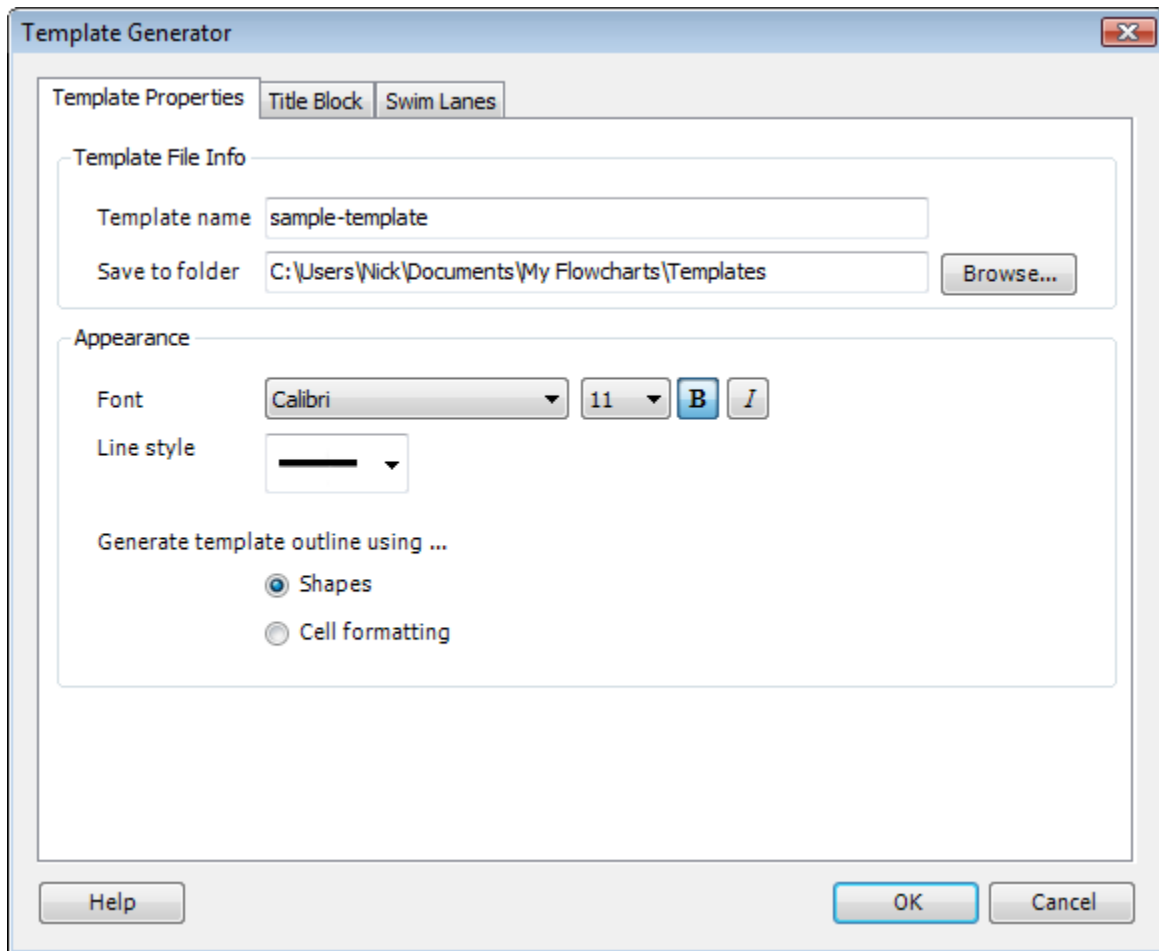
6 Template Generator

(Note: The Value Stream Mapping Template Generator is covered [here](#).)

To create a template click Templates > Create Template from the toolbar. The Template Generator allows you to design flowchart templates, including cross functional (swim lane) layouts. The Template Properties and Title Block settings are saved between uses. Once they are set, new templates can be created very quickly.

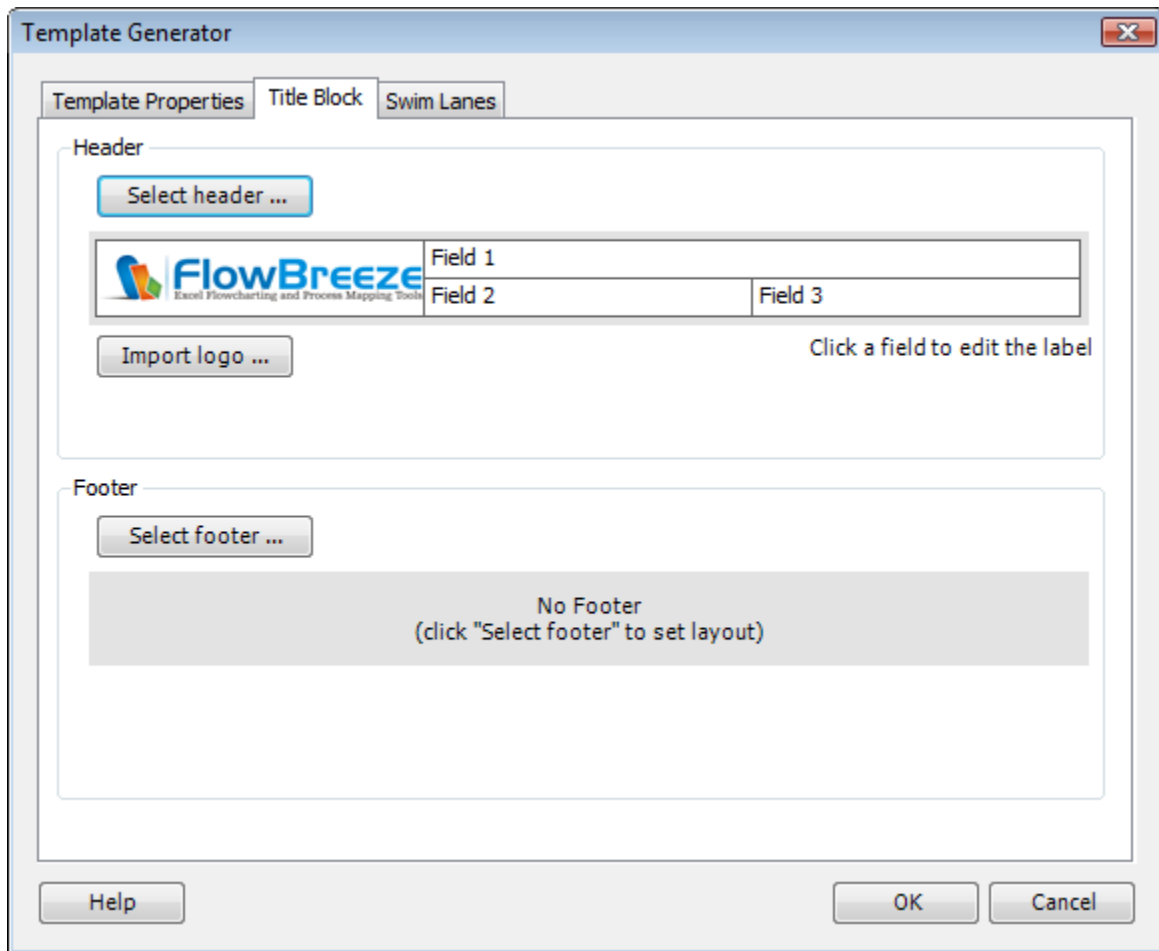
Template Properties tab

- Template name: The file name that the template will be stored as.
- Template folder: The folder that the templates will be stored in. The default location is "\\My Flowcharts\\Templates" under your Documents folder.
FlowBreeze does not use the built-in template folder in Excel because that folder is hidden in some versions of Windows.
- Font: Sets the font for the title block fields and swim lane labels.
- Line style: Sets the line color and thickness for the title block and swim lane outlines.
- Generate template outline using ...
 - Shapes: This option is better if you want to copy and paste the flowchart into another document.
 - Cell formatting: This option makes the template easier to manually edit.



Title Block tab

- Select header: Clicking this will open the Select Header window shown below left. In this sample, we've selected the "3 fields w/ logo" option.
- Select footer: Clicking this will open the Select Footer window shown below right. In this sample, we've opted for no footer.
- Import logo: Clicking this will allow you to import your logo into the template. Logos are automatically resized to fit the available space.



Select Header

No title block header

1 field

1

 6 fields

1	2	3
4	5	6

2 fields

1	2
---	---

 1 field w/ logo

LOGO	1
------	---

3 fields

1	2	3
---	---	---

 2 fields w/ logo

LOGO	1
	2

4 fields

1	2	3	4
---	---	---	---

 3 fields w/ logo

LOGO	1	2
------	---	---

5 fields

1	2	3	4	5
---	---	---	---	---

 4 fields w/ logo

LOGO	1	2
	3	4

Ok Cancel

Select Footer

No title block footer

1 field

1

2 fields

1	2
---	---

3 fields

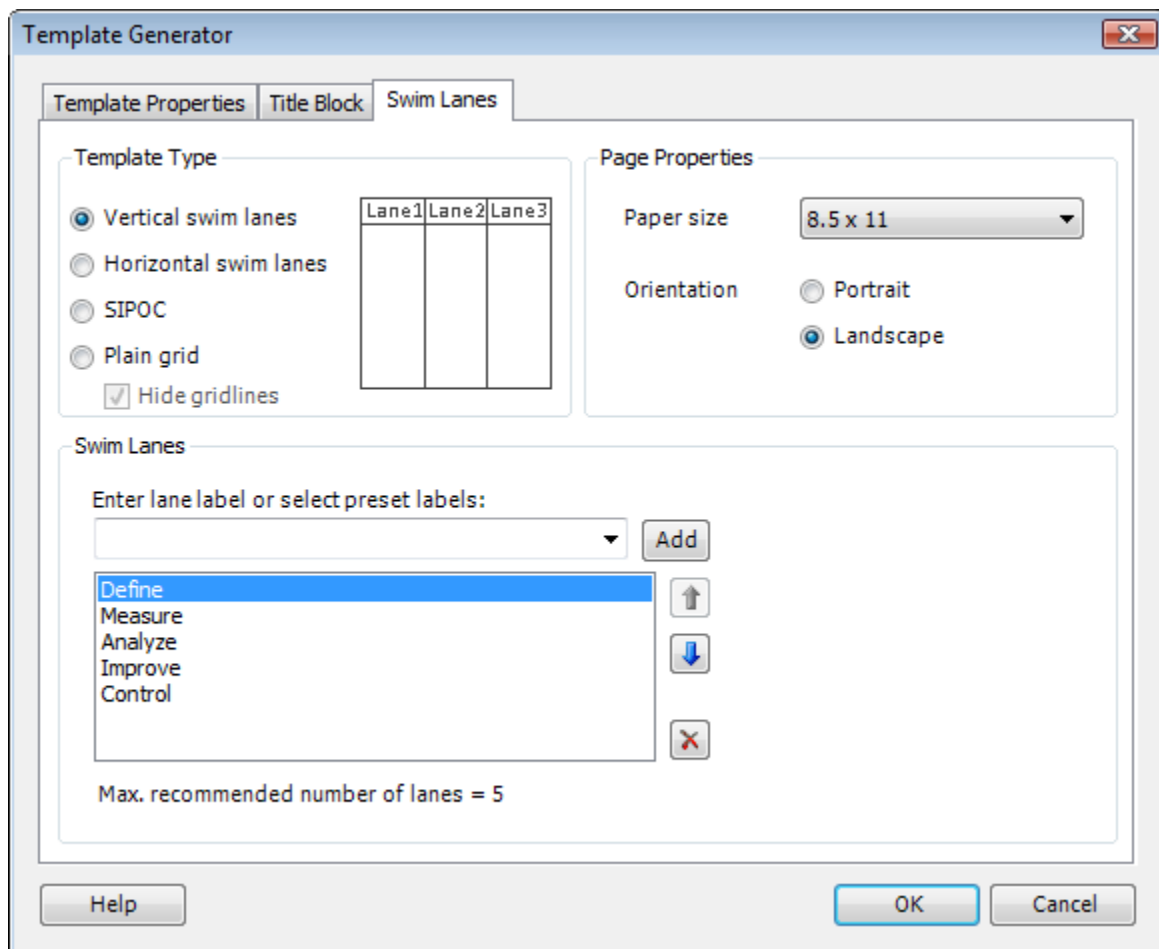
1	2	3
---	---	---

OK Cancel

Swim Lanes tab

- Template Type: click the option for the type of flowchart you wish to create - vertical swim lanes, horizontal swim lanes, SIPOC, or just a plain grid with a title block. Note, SIPOC (Suppliers, Inputs, Process, Outputs, Customers) is a special layout with a open area in the center for creating the flowchart.

- Paper size: FlowBreeze supports 8-1/2x11, legal, 11x17, A3, and A4 paper sizes. Important: your printer must support these page sizes in order to properly set the page properties.
- Orientation: Select portrait or landscape.
- Swim Lanes:
 - Enter the text for each lane label then click the "Add lane" button. The text can be left as generic (e.g. "lane 1", Lane 2", etc.) and changed after the template is loaded at the time of use.
 - Or, select a set of swim lanes from the drop down list.
- The "*Max. recommended number of lanes* = " shows the number of lanes that will fit inside a single page boundary for the paper size and orientation you have selected.



6.1 Load Template

Where are the templates?

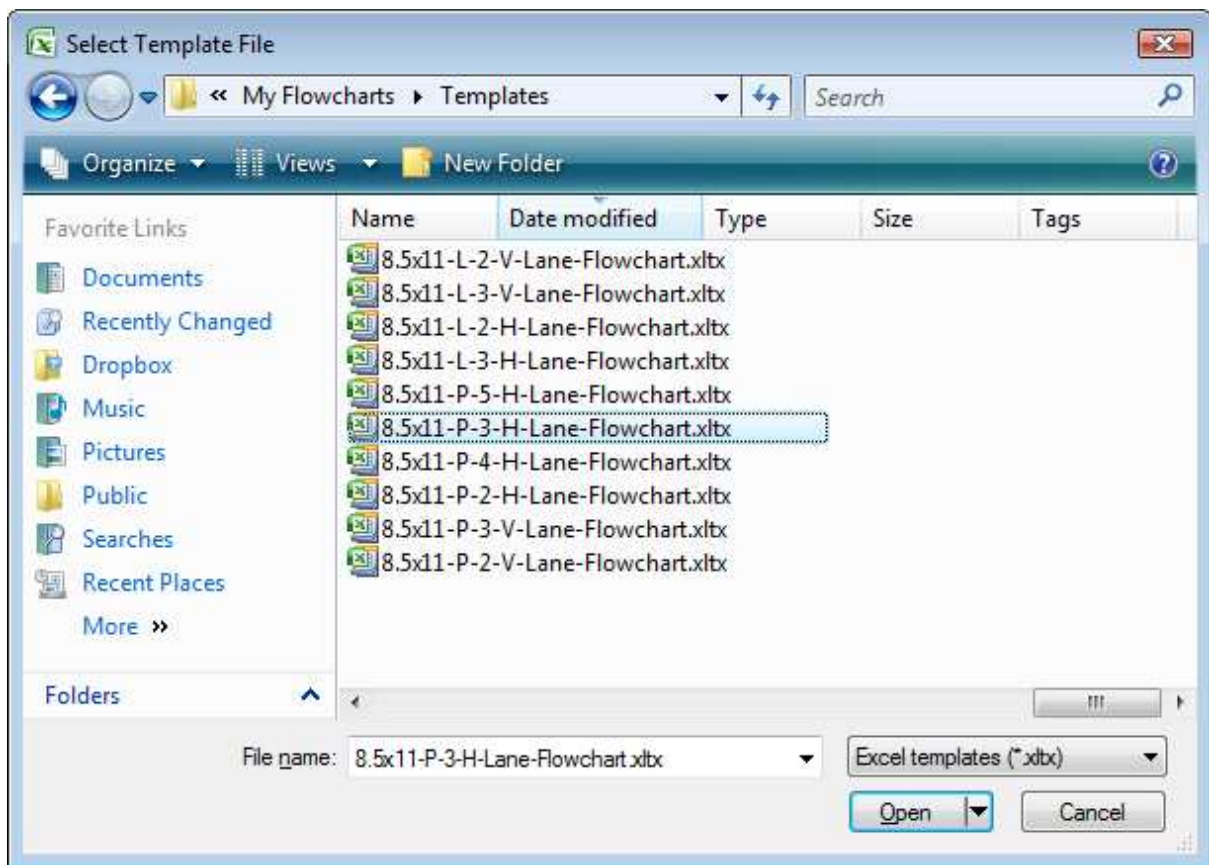
When FlowBreeze first runs, it will create a My Flowcharts folder in your Documents folder and place any templates you've created in a Templates sub-folder.

Loading templates

Templates can be loaded two ways:

- Via the toolbar: Click Templates > Load Template button to launch the Select Template File dialog below.
- Via the Start Flowcharting window: Under the Drawing Area section, choose the Load a template option.

After clicking Open, the template will be loaded into a *new worksheet*.



Naming convention for pre-made templates

Pre-made templates can be downloaded from the breezetre.com web site. (although, we recommend [creating your own flowchart templates](#)).

The pre-made templates pack a lot of information into the names. The syntax is:

page size - orientation - number of lanes - lane direction - "lane flowchart"

- Paper size: The Template Generator supports 8.5x11, 11x17, A3, and A4. You can manually create other paper sizes.
- Orientation: P = portrait and L = landscape.
- Number of lanes: Number of swim lanes.
- Lane direction: V = vertical (top to bottom) and H = horizontal (left to

right).

Example: *8.5x11-P-2-H-Lane-Flowchart* would be read 8-1/2 x 11 Portrait
2 Horizontal Swim Lane Flowchart.

Related

- [Template Generator](#) - how to create a template using FlowBreeze.
- [Creating Custom Templates](#) - how to manually create a template (without the Template Generator).

6.2 Create Custom Templates

The [Template Generator](#) automates the process of creating cross-functional, swim lane templates, but if you need more customization this section covers how to manually create your own templates.

FlowBreeze allows you to load custom templates via the [Load Template](#) toolbar button or at the start of a flowcharting session in the [Start Flowcharting](#) window. In addition to cross functional flowcharts (a.k.a. swim lane diagrams), you can also create simple templates for title blocks or block diagrams.

Step-by-step instructions

1. [Create a grid](#).
2. Turn on [Snap to Grid and Snap to Shape](#).
3. Set the page properties for paper size, orientation, and margins as desired via the Page Layout tab on the ribbon.
4. Type anything into a cell and do a print preview in Excel. Then close the

print preview. This will display the page breaks, giving you a visual boundary for the template layout. Delete the entry you typed.

5. Get access to the Excel Drawing tools via the Insert tab. For the steps below, you will need to click the Shapes drop down while on the FlowBreeze tab.

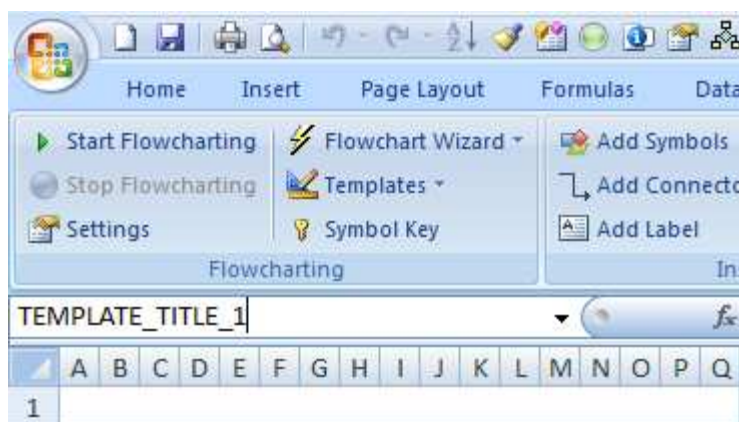
6. Use a rectangle shape to add any title blocks to the diagram. Apply text formatting with the built-in formatting tools in Excel. If you wish to add swim lanes, add those beneath the title blocks.

Note: Keep a margin of one grid space between the title block and the left, right and bottom page break lines. The border lines will not display when printed if they are directly on the page break line.

7. Add any vertical lines for borders and swim lanes. Use the plain Line available from Excel's drawing tools.

8. Rename all the shapes, so that each shape name starts with "TEMPLATE_". This is critical to integration with FlowBreeze because it will treat these shapes specially. To rename a shape, click on it, then rename it in the Name Box, as shown below. The picture shows the Excel 2007 Name Box, but it's in the same location in other versions of Excel.

Note that no two shapes can have the same name. This must be done for both shapes and lines.



9. Click Group > Group All Shapes from the FlowBreeze toolbar.

10. Repeat step 8 and name the grouped template shapes "TEMPLATE_GROUP".
11. Save as an Excel template file (i.e. an .xltx file type).

7 Settings

When you click the Settings button on the toolbar, the FlowBreeze Settings window will open. The first tab allows you to set the properties for the active **Symbol List**, shown in the picture below.

Symbol List

- **Symbol:** A icon of the symbol - cannot be edited in the grid.
- **Style:** A small icon of the style set for the symbol - can be changed via the drop down list in the cell or by clicking "Edit styles" (detailed below).
- **Name:** This is the name of the symbol that will be displayed when you generate a Symbol Key. Click to edit.
- **Prefix:** An abbreviation of the symbol name. Click to edit. Important: keywords must be separated by commas. (See also: [Using Keywords and Prefixes](#)).
- **Keywords:** Words, that when used in an entry, will generate the symbol. Click to edit. (See also: [Using Keywords and Prefixes](#)).
- **Width:** The width for the selected symbol. The grid units are based on the default row height in Excel. (See "Edit dimensions" below).
- **Height:** The *minimum* height setting is similar to the width setting. By default, FlowBreeze will auto-size the height of the symbol to fit the text. (See "Edit dimensions" below).

Other controls on this tab

- **Move Up / Move Down buttons:** FlowBreeze will check your flowchart text entry against the keywords in the list. The keywords are evaluated in the same order as the symbols in the list, so if a text entry has keywords matching two or more symbols, the symbol that appears first in the list will be created.

- Disable keyword mappings: If checked, keywords will be ignored and entries will generate Process symbols by default.
- Edit symbol list: Allows you to add or remove symbols from the active list of symbols used in flowcharting.
- Edit styles: Opens the [Symbol Styles](#) window for bulk style changes to one or more symbols.
- Edit dimensions: Opens the Set Symbol Dimensions window. The dimensions set in this dialog will affect *all symbols*.

7.1 Settings - General

The **General** tab of the Settings windows has the following sections, which reference the screenshot below.

Terminators and Connection Nodes

Terminators are the oval flowchart symbols used to designate the start or end of a process boundary. Connectors come in two types - On-Page and Off-Page. the On-page Connectors are labeled circles used to designate a jump from one part of the flow diagram to another. Similarly, the five-sided Off-Page Connectors are used to designate a jump to a process step on another page (assuming a multi-page flowchart). The available settings for these symbols are:

- Prompt to add an end Terminator: If this setting is enabled, FlowBreeze will prompt you to add a an end Terminator. The prompt window allows you to enter the text and select the location to place the terminator symbol. Note, when you click the Stop Flowcharting button FlowBreeze will scan the symbols on the drawing and look for any terminators

already labeled "stop", "end", or "done". If it finds one, it will not prompt you to add another one.

- Generate On-Page Connector nodes for entries with 1 or 2 ALL CAPS characters: If checked entries such as A, B, AA, A1 will generate an On-Page Connector symbol.
- Generate On-Page Connector nodes for numeric entries: If checked entries such as 1, 2, 3, 1000, etc. will generate an Off-Page Connector symbol. If the Off-Page Connector field is unchecked, then numeric entries will generate an On-Page Connector.

Default Process Shape

This option allows you to set whether the default shape is a rounded rectangle or a regular rectangle (with squared corners).

Symbol Text

- Automatically capitalize first letter: Text like this - "sample entry", will become this - "Sample entry".
- Text Alignment: Set the vertical and horizontal alignment of the text.
- Prefix delimiter: Determines the separator between prefixes and text entries. See [Prefixes and Keywords](#) for more detail.
- Font: The font used for the flowchart symbol text. Tahoma 8 is used by default because it produces clear, readable text at a smaller font size, allowing more words to fit within a shape. Calibri and Segoe UI also are suitable fonts for clear, readable text at small font sizes.

Symbol Size

- Autosize symbol height if it exceeds default height: The heights set in the symbol list are minimum heights. If checked this will autosize the height. If you prefer to have fixed heights, it's recommend that you

uncheck this box and set the heights in the symbol list to a uniform value.

- **Smart Sizing for On and Off-Page Connectors:** If checked, this will keep the connector node shapes as small as possible.
- **Allow text to overflow shape: (Excel 2010 - 2015 only):** If the text is too long to fit within the shape, this setting allows the text to go beyond the shape borders. Although this cannot be set in Excel 2007, if a flowchart is created in Excel 2010 or newer and viewed in Excel 2007, it will render correctly. This setting is lost if the file is saved as an Excel 97-2003 .xls format.

Spacing Between Shapes

- Sets the grid spacing between the shapes.

7.2 Settings - Decisions

The **Decisions** tab of the Settings window has the following sections, which reference the screenshot below.

Decision Options

- **Create Decision symbol for entries containing "?":** If an entry contains a question mark, checking this option will make FlowBreeze create a Decision symbol.

Branch Label Creation

Decisions are the diamond-shaped symbols used to indicate branches in the process, and the branches usually have labels next to the connectors to indicate the path differences.

- Automatically add branch labels: Branch labels are added to Decision symbols without prompting.
- Prompt for branch labels: Every time a Decision symbol is generated, you will be prompted for the branch labels.
- Don't add branch labels: No branch labels will be added.

Branch Label Position

- Branch label position: You can choose to have the branch labels centered over the flow line, or offset to the side.

Branch Label Text

- Branches often have labeled flow line connectors coming out of them - one for each possible decisions. It is considered good flowcharting style to keep the directions consistent, e.g. "Yes" always going down and "No" always going to the right.
- The top, right, bottom, and left branch label entries are the default labels to add to their respective sides. If you choose the "Automatically add branch labels" option above, these labels will be added. If you choose the "Prompt for branch labels" option above, these values will be pre-filled on the prompt window. If the text box for a side is empty, no label will be added.

Label Formatting

Note: For consistency, the label formats set here apply to all labels created by FlowBreeze, not just branch labels.

- Transparent background: In case the label edges overlap the connectors, a transparent label background lets the connector line remain visible.
- Use different font for branch labels: If checked, you can set a different

font and color for branch labels.

7.3 Settings - Connectors

The **Connectors** tab of the Settings window has the following sections, which reference the screenshot below.

Flow Line Connector Options

- Automatically add flow line connectors : FlowBreeze will automatically add flow lines when from the last symbol if this is checked. Also, if you restart flowcharting, or if the new shape is not aligned or adjacent to the last shape, then FlowBreeze will prompt you to select the shape that you want to route a flow line from. If this setting is unchecked, no flow lines are added.
- Dashed lines in/out of Alternate process shapes: Some processes have alternate paths. To indicate this, you can check this setting to make flow lines routed to or from Alternate process shapes be dashed.

Flow Direction

After you create an entry, FlowBreeze will replace it with a shape, then position the cursor to the next logical place on the sheet. the Flow direction setting determines whether the placement is below the last shape or to the right of the last shape. If you choose "Let FlowBreeze detect direction" it will wait for two consecutive shapes in any direction and place the cursor accordingly.

Line Type for non-adjacent shapes

- You can select straight, elbow, or curved. When shapes are aligned and adjacent, a straight connector is used.

Connector Format

- Arrowhead Begin and End: Sets the arrowhead for the beginning and ending of the line.
- Arrowhead size: Sets the width and length of arrow.
- Color: Sets the color of the flow line connector arrows.
- Thickness: Sets the line thickness of the flow line connectors.
- Remove line shadow: (recommended) Checking this box removes the shadow from the flow lines. Some of the Excel built-in styles feature a shadow on the lines. The shadows look good on screen but often look blurred when printed or when the flowchart is exported to an image file or saved to PDF.

Shape Borders

- Set shape border thickness to match connector line thickness:

8 FlowBreeze Tools

The following tools are available in FlowBreeze to help automate flowcharting tasks:

- [Add Connectors](#)
- [Add Shapes](#)
- [Apply Styles](#)
- [Clear Shading](#)
- [Create a Grid](#)
- [Create a Symbol Key](#)
- [Export as Picture](#)
- [Export to Web Page](#)
- [Extract Text](#)
- [Find / Replace Text](#)
- [Flowchart Editor](#)
- [Insert Branch](#)
- [Insert Decision Blocks](#)
- [Insert Group Box](#)
- [Re-Align Shapes](#)
- [Select Shapes Tool](#)
- [Split Connector into Nodes](#)
- [Straighten Connectors](#)
- [Symbol Styles](#)
- [View Gridlines](#)

8.1 Add Shapes

Clicking **Add Shapes** on the toolbar will open the Add Shapes dialog. The symbol style and font formatting is based on the configuration set in the [Settings](#) window.

Steps

1. Select the cell where the symbol is to be placed.
2. Click on the symbol type from the gallery.
3. Type the text to appear in the symbol.
4. Click the "Add Shape" button.

Shortcuts

- Instead of clicking the "Add Shape" button, you can press Enter after typing the text.
- You can double-click on a symbol image to add the shape. If the Text field is empty, a blank shape is added.

Options

- Auto-detect shape type: If checked, as you type the entry in the Text field, FlowBreeze will select the shape type from the gallery above. Supports [Keywords and Prefixes](#).
- Add connector from previous shape: If checked, will add a flow line connector from the last shape added (if one exists and can be detected).
- Override default styles: When checked, you can customize the shape style and font.

Notes

- Each symbol section is collapsible.

- Press **x** in the upper right of the panel to close it.
- Press **<<** in the upper right to collapse the panel to the left edge of Excel.

8.2 Clear Shading

The **Clear Shading** tool will clear all the shading on the worksheet, including any of the gray guidelines that might be on the sheet. Normally when a flowcharting session is stopped, the gray guidelines are cleared automatically. However, if you close the workbook or print during a flowcharting session, the session will be interrupted and the shading may not be reset.

8.3 Create a Grid

The **Create Grid** feature will adjust the widths of all the columns to match the default row height. It can be accessed from the FlowBreeze toolbar via "Layout" | "Create a Grid".

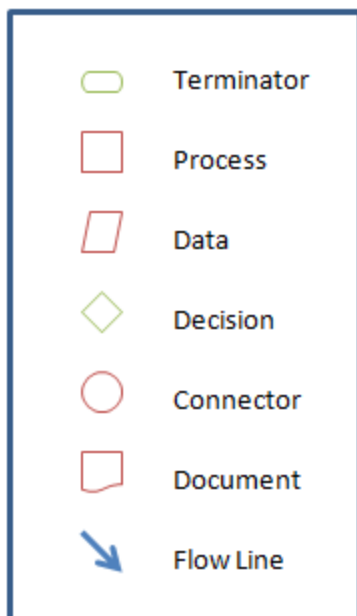
There is no fixed value for the grid size since the column width depends on the row height. The default row height varies between the different versions of Excel based on the default font. On most systems, Excel 2000 - 2003 use Arial 10pt as the default font, which yields a grid size of 17 pixels. Most Excel 2007 and later systems will use Calibri 11pt as the default font, which yields a grid size of 20 pixels.

8.4 Create a Symbol Key

A flowchart symbol key lets people viewing your flowchart decipher the meanings behind the symbols. As the sample image below shows, a symbol key will show the symbol graphic and symbol name. The symbol

names can be edited by changing the Name field in the Symbol List grid on the [Settings](#) form. To generate a flowchart symbol key, click **Symbol Key** on the FlowBreeze toolbar. You will be prompted to select a location on the worksheet to place the symbol key. When you click OK the symbol key is generated with styles applied.

Note: The symbol key is Grouped. If you need to edit the contents of the symbol key, see how to [Work with Grouped Symbols](#).



8.5 Export as Picture

Important Note: If the worksheet zoom is not set to 100% before running the **Export**, shapes may be clipped if you select the "Flowchart and Sheet" option. If this happens, close the export Picture window, zoom the sheet to 100%, and try again.

Image Source options

- Flowchart (shapes only): The shapes are selected automatically with this option, and no worksheet content is captured.
- Flowchart and sheet (shapes and/or cell contents): The used range of the worksheet is selected by default, but you can change it by clicking the "Select" button which will open a range selection dialog. If you manually edit the range, you must click refresh to update the preview image.

Image Destination

- Image type: The following picture formats are supported:
 - PNG (the default)
 - BMP
 - GIF
 - JPG (100% quality setting)
 - TIF
- File name: Enter the file name to save the image as.
- Folder: the folder where the flowchart is to be saved. The default location is in the \My Documents\My Flowcharts\ folder.

When you click OK, the image will be saved.

8.6 Export to Web Page

The **Export as Web Page** tool will take a snap shot of the flowchart on the current worksheet and save it to an HTML file. The tool can also be used to take a snap shot of a range of cells, but it will be as an image of the worksheet, not text.

Select Image

- Image source: Select either shapes or worksheet content.
- Range: If you selected "Flowchart and sheet", then this field will allow you to select the image by clicking the "Select ..." button.
- Thumbnail: With this option checked, the web page will contain a thumbnail linking to the larger image. You can specify the height and width of the thumbnail below. Changing one dimension will change the other proportionally.

HTML Properties

- HTML file name: The name of the HTML file and the file extension. You can select the file extension from the dropdown or type in an unlisted one.
- Image file name: The name of the image file itself.
- Folder: The folder where the HTML file is to be saved.
- Save flowchart image in a separate folder: On many sites, the images are stored in a separate folder from the web pages. Checking this allows to set the image folder path.
- Page title: The <title> element of the HTML page.
- Heading: The <h1> element of the HTML page.
- Image alt text: The alt tag of the element.
- Description: Any text you want to appear in a paragraph below the flowchart image.
- Open file in browser: If checked the file will be opened after it is created. FlowBreeze only supports opening standard HTML files locally. If you enter a different file type, such as php or aspx, the file will be saved but not be opened.

8.7 Extract Text

The **Extract Text** feature will cycle through all the flowchart symbols on the current and output the text contents to a worksheet location that you specify. This tool is useful for tabulating process metrics. The process steps can be diagrammed in a flowchart, then the extraction tool can output the steps, allowing you to create a table listing any relevant process metrics such as time, defects, ownership, etc.

Extract Text Dialog

- Text listing: The text from the flowchart symbols, along with a Extract checkbox to omit an entry. The text can be edited in the listing, if needed.
- Sort by: Sorting options includes columns then rows, rows then columns, or alphabetical. The rows can be reordered by drag and drop as well.
- Output range: Select the range for output. It can be on the current worksheet or another worksheet. Acceptable Excel range formats are
 - cell - example: A1.
 - worksheet!cell - example; 'sheet1'!A1
 - '[workbook]worksheet'!cell - example: '[book1.xlsx]sheet1'!A1
- Link shape content to cells: If checked, each shape's text will be linked to cell that it was extracted to. For example, if a shape's text is linked to cell A1, editing cell A1 will change the text in the shape. You can determine which cell a shape is linked to by clicking on a shape and looking at the address in the Excel formula bar.

Excluded Shapes

The Extract Text tool excludes the text found in the following shapes:

- Text boxes labels - e.g., the yes/no labels for decision shapes.
- Text in the shapes created by the Flowchart Key tool.

- Title block text created by the flowchart template generator.
- Outline shapes created by the Group Box tool.

8.8 Find / Replace Text in Shapes

The Find / replace Text tools are located under the Edit Flowchart menu on the FlowBreeze ribbon tab.

Find / Replace Text: Excel does not have a built-in tool for finding and/or replacing text within shapes. The FlowBreeze Find / Replace Text in Shapes tool acts like most other tools to find and replace text, with Find Next, Replace, and Replace All buttons. The "Current text" and "New text" fields display the before and after of a replace Operation. Additionally, as you cycle through finding or replacing text, the corresponding shape is activated on the worksheet.

Undo Replace: Used to undo the last replace operation. Excel does not track changes made by add-ins, so this feature allows you to undo the changes to shape text made by the previous Find / Replace Text action.

8.9 Flowchart Editor

The **Flowchart Editor** lets you make changes to an existing flowchart. It loads all the symbols on the sheet and displays them as shown in the picture below. When you select an entry from the list, you can change the text, the symbol type, or the style. The Symbol and Style columns are clickable drop downs.

Options

- Selected Item group: This area allows you to change the symbol and the

style for the selected entry.

- Update font: Unchecking this will apply any the other edits but not change the font within the shapes.
- Autosize symbols: If checked, any symbol with modified text or font will be resized to fit the text. Note that if the font is enlarged or the text length is longer than the original, you may need to move shapes around in the flowchart afterward to adjust for the new sizing.
- Update line style: If checked, the line style from the available dropdown list will be applied to all shapes.
- Remove line shadow: The built-in styles in Excel look good on screen, but often appear fuzzy when printed or exported to image files. This option remove the shadow from all lines, giving a cleaner look to the flowchart.
- Include template lines: When updating line styles, if checked this will force the template swim lane outlines to match the connector line styles.
- Remove borders from solid-fill shapes: There are two groups of styles available for shapes - Themed and Solid Fill. If this option is checked, the borders will be removed from all the shapes with solid-fill styles.

8.10 Insert Branch

The **Insert Branch** tool provides a fast way to add branching or tree structures to your diagram. This also enables you to quickly create Organizational Charts (a.k.a., Org. Charts). You can open the Insert Branch form (Picture 1) from the toolbar or by typing "BR" while flowcharting.

Base Shape

If shapes exist on the worksheet, the Base Shape region is populated with a list of the existing shapes, allowing you to select which shape you want the flow lines (connectors) routed from. If there are no shapes, then you can add a shape by entering the text, selecting its location on the sheet, and then selecting the shape type and format from the drop down menus.

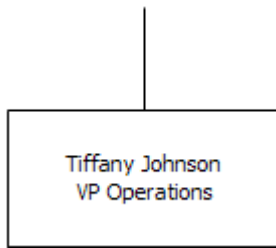
Branch Type and Options

- Branch Type: Select one of the six types of branch layouts.
- Branch spacing: Determines how much spacing is between each parallel branch.
- Arrow direction: Determines whether the arrows flow from the base symbol to the branches (*default*), or from the branches into the base symbol.

Add Branch Items

As implied, the **Branch text** and **Branch label** fields let you add the text and branch label for each shape. These fields are optimized for fast entry. Pressing Enter in the **Text** field will forward the cursor to the **Label** field. Pressing Enter again will add the item to the grid. If both the **Text** and **Label** fields are empty, the form will close and the branch structure will be created.

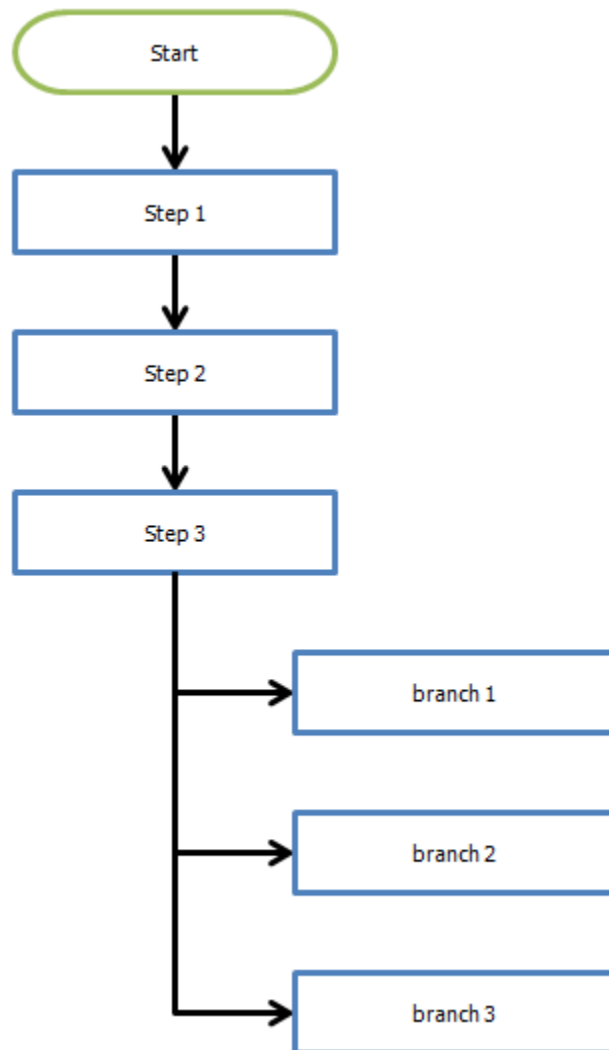
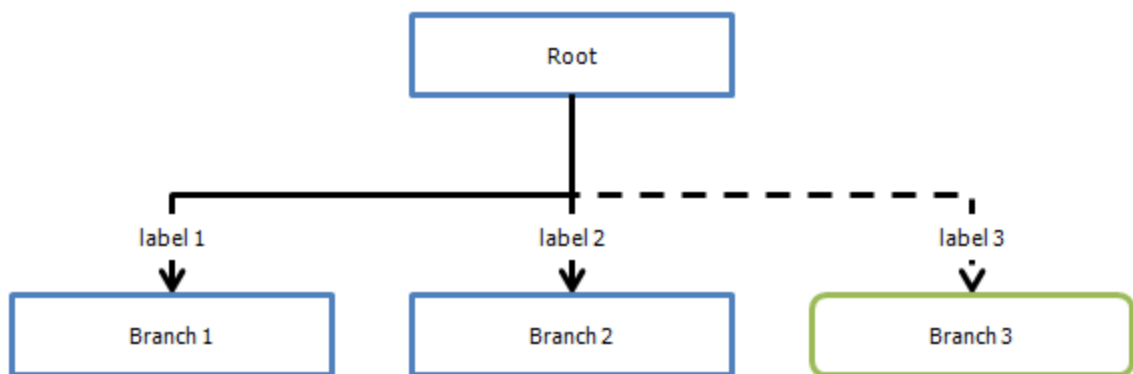
Placing a pipe character (| - above the \ on most keyboards) in the Text field will add a line break to the text when the shape is created. For example, entering "Tiffany Johnson|VP Operations" will produce the following branch item:



Using "|" character to
add line break.

After the text and label are added to the bottom grid, you can click on the **Symbol** column to change the shape type. Checking the box in the **Dashed Line** column will make that line dashed, a common line style for alternate paths or advisory roles. The branch items are generated left to right for horizontal branch structures and top to bottom for vertical branch structures.

Sample Outputs

**Insert branches from existing shape****Insert branches with new base shape**

8.11 Insert Decision Blocks

The **Insert Decision Blocks** tool allows you to quickly add a series of decision - side shape pairs to a flowchart, as shown in the Sample Output picture below.

Decision Block Entry

- Decision text: The text to appear within the decision shape.
- Side shape text: The text to appear in the shape added to the right side of the decision.
- Add decision block: Clicking this will add the current entries to the list below.
- Import from worksheet: For convenience, you can create the text for the entries on a worksheet and import them into the form.

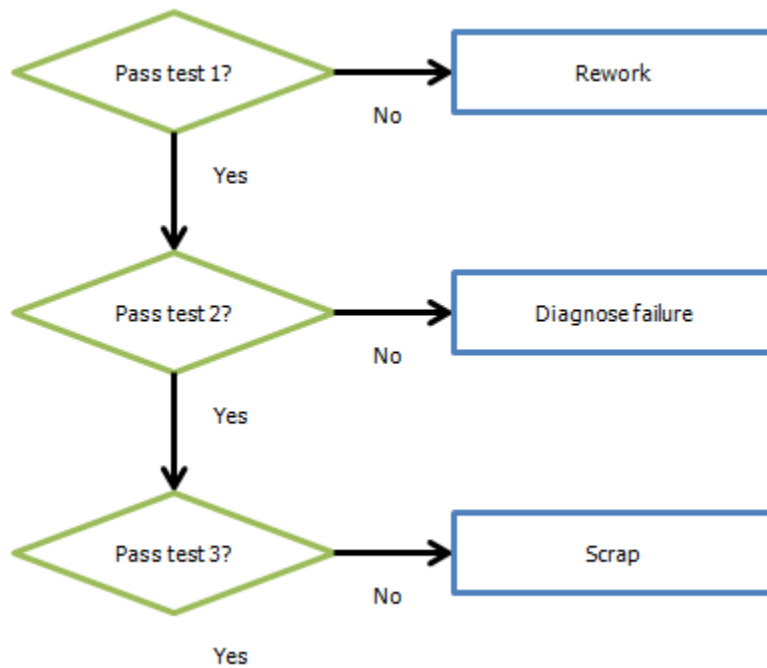
Connector Labels

- The text to appear in the right and bottom branch labels, next to the outgoing connectors from the decision.

Output Location

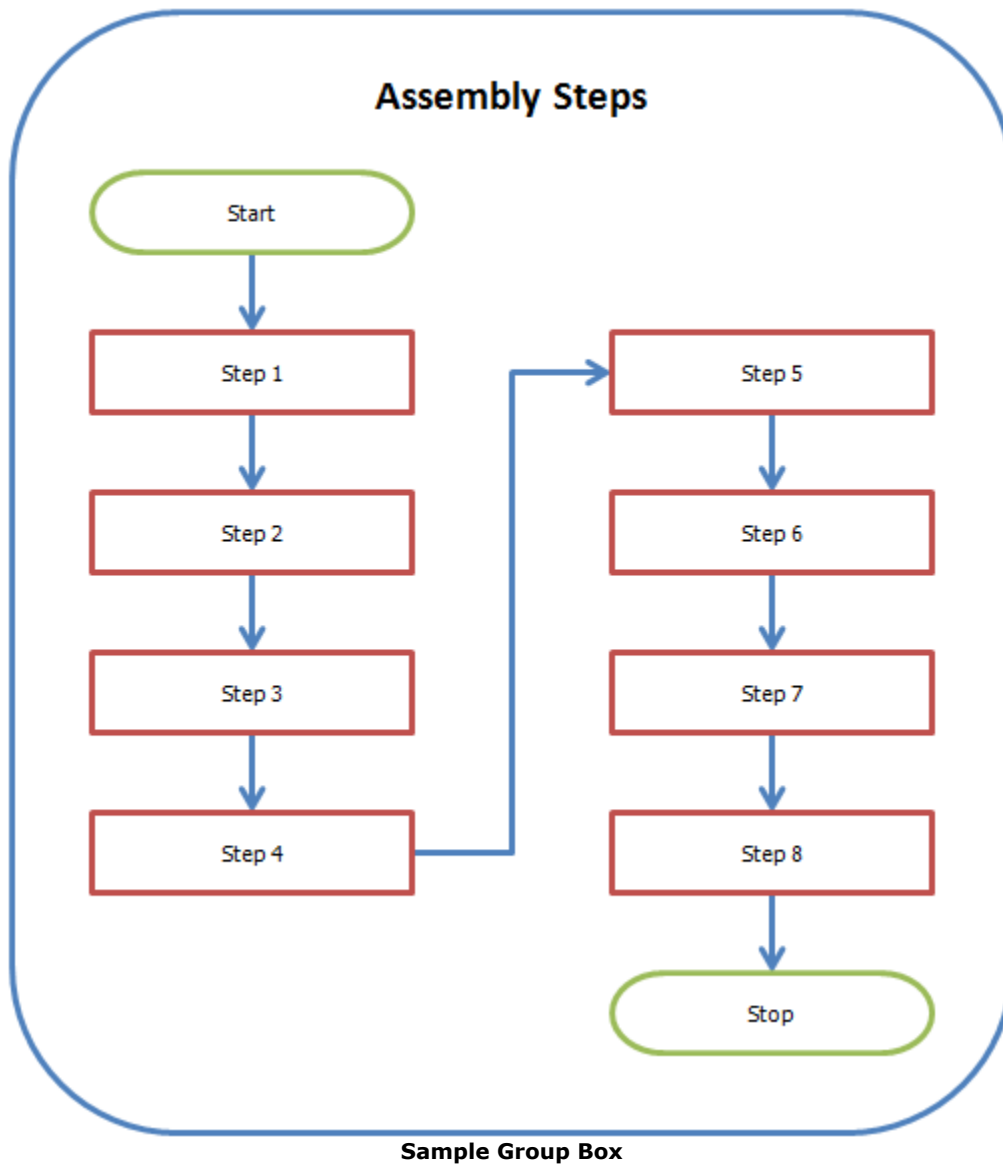
- Cell: By default, this will be the cell selected when you open the form.

You can change the location by clicking "Select ...".

**Sample Output**

8.12 Insert Group Box

The **Group Box** tool lets you add a labeled box around a group of shapes. Note that the Group Box is automatically placed behind all the symbols and connectors it encompasses. The form allows you to set the text, formatting, and text alignment within the group box. The "..." button in the Output Location section lets you select the region where the group box should be placed. The Style fields let you set the color formatting for the group box, as well as the corners and line style.



8.13 Print Flowchart Image

Print Flowchart Image is an experimental feature created to resolve problems with some printers. There is a known bug in Excel where shapes will print without their text. FlowBreeze uses the native shapes available in Excel, and because the normal print operations are controlled by Excel

and are dependant upon the printer driver, there is little that FlowBreeze can do to correct this problem. The Print Flowchart Image feature works around this problem by taking a snap shot of the flowchart and printing the resulting image.

8.14 Quick Styles

The Quick Styles menu has the following options:

- **Apply Default Styles:** Applies the styles that you have set for connector lines and each symbol type in the [Settings](#) window.
- **Reset All Styles to Black and White:** Changes all the lines and shape borders to black, the text to black, and the shape fill color to white.
- **Set All Line Weights:** Changes the line thickness for all connector lines and shape borders. The default line weight for Excel 2013 and later is 0.5, and the default line weight for older versions of Excel is 1.5. (*Note: There are known issues with lines rendering improperly when printed or exported to PDF when line thickness is greater than 1.5. We recommend line thicknesses of 1.0 or less to minimize the likelihood of these problems.*)

8.15 Re-Align Shapes

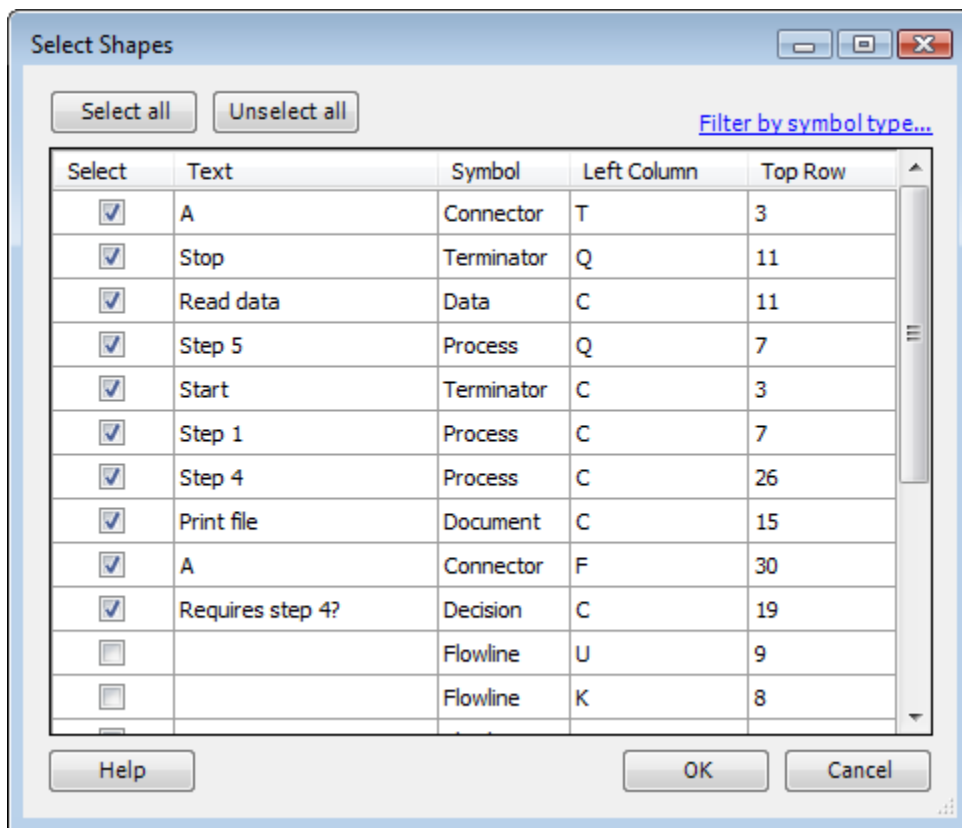
If shapes ever become unaligned from the grid, the **Re-Align Shapes** tool will nudge each shape to the closest gridline.

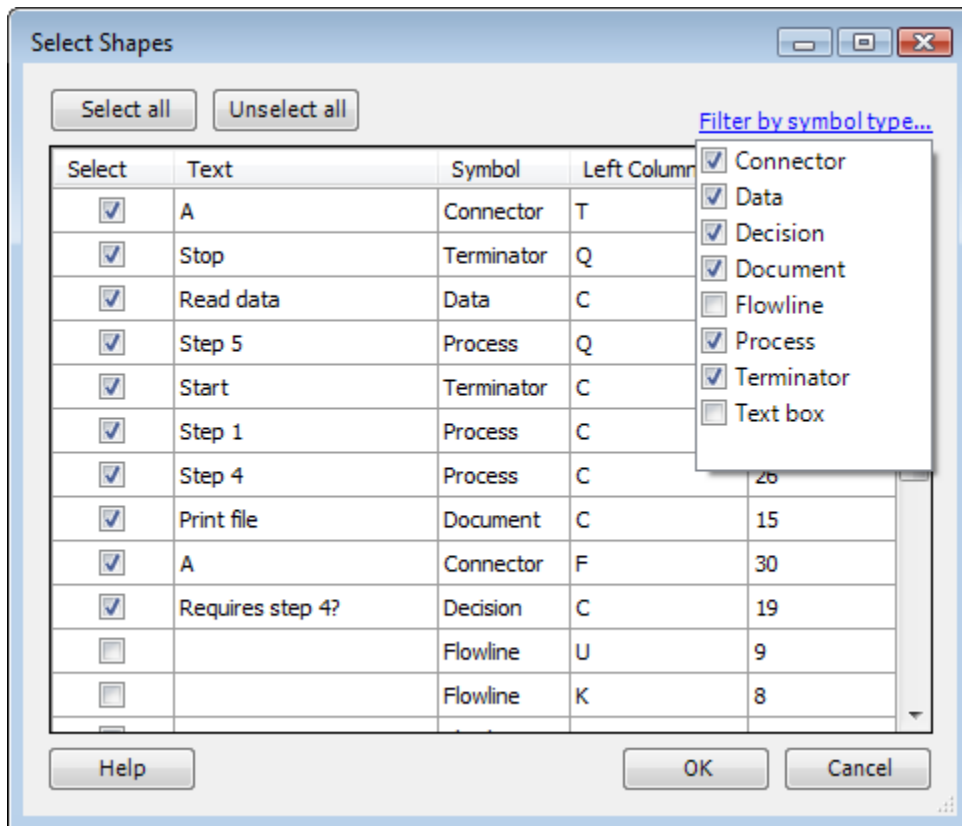
Note: If the flowchart contains a connector that has one end "connected" to a shape and the other end is not, the connected shape will not be re-aligned. One quirk of Excel is that moving a shape with a free floating connector can cause the connector location to be changed in an unpredictable manner, so these shapes are left as-is.

8.16 Select Shapes Tool

The **Select Shapes** tool allows you to select multiple symbols filtered by shape type. You can create and apply filters or manually select or deselect each shape. When you click OK, all the items checked in the bottom grid will be selected on the worksheet. The column headers are clickable, allowing you to sort by column.

- **Select all:** Checks all the checkboxes in the Select column of the grid.
- **Unselect all:** Clears all the checkboxes in the Select column of the grid.
- **Filter by symbol type:** Displays the checklist shown in the second image below, and as the label implies, allows you to filter the selection by symbol type.

**Select Shapes tool**



Select Shapes - filter options

8.17 Symbol Styles

FlowBreeze lets you assign styles by individual symbol type. The styles are based off the built-in styles in Excel 2007 and later, and most of them can be emulated attractively if the file is opened in older versions of Excel.

Fields

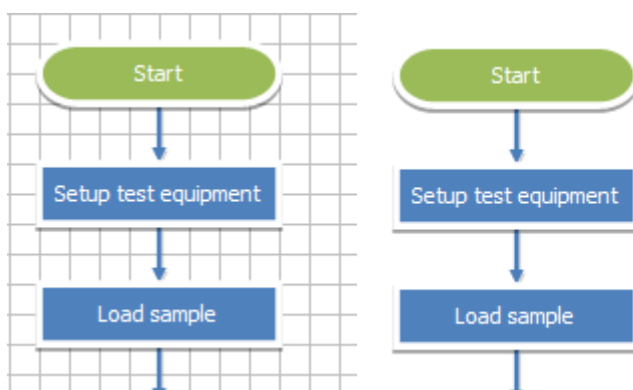
- Selected style: this image shows the currently selected style. To select a new style, click on it with your mouse.
- Apply To: When it loads, the style for the currently selected symbol will be highlighted. When you change a style, you have three options:

- Apply to current symbol: Applies the style only to the symbol that is selected in the calling form.
- Apply to all symbols: Replaces the style for all the symbols in the calling form.
- Apply to symbols that use the previous style: Applies the style to all the symbols that have the same style as the one currently selected in the Symbol List grid of the main [Settings](#) window. For example, if the currently selected symbol has a white fill color and you change it to orange, this setting would replace the style for all the symbols having a white fill. But any symbol with, say, blue or red fill would not be affected.

Note: The "Apply to" options may not be visible. This window is launched from several other forms in FlowBreeze, and the "Apply to" options may not be applicable.

8.18 View Gridlines

The **View Gridlines** feature will show or hide the Excel gridlines. Gridlines can be helpful when laying out a flowchart, but when it comes time to [save it as a picture](#), hiding the gridlines makes it look nicer. Below are screenshots with the gridlines toggled on and off.



9 Connectors

9.1 Add Connectors

The **Add Connectors** dialog will let you add one or more flow line connectors between shapes. The settings are based on the configuration set in the [Settings](#) window. Opening the Add Connector tool can be done in two ways:

- Click Add Connector on the FlowBreeze toolbar.
- Type "FL" during a flowcharting session.

Usage

Select the respective texts for the "From Shape" and the "To Shape" that you want to route the flow line connector between, then click the "Add Connector" button. Alternately, you can click on the first shape, hold the SHIFT key and click on the second shape, then click the Refresh button - the two shapes will be selected in the corresponding lists.

Settings

Most of the settings are self-explanatory (hopefully), but there are two worth commenting on:

- Auto-detect (connection sides): If selected, FlowBreeze will try to determine the best route for the flow line connector. However, there may be occasions that the routing isn't optimal. If this happens, click on the connector, then drag one endpoint to the new connections side. For elbow and curved connectors, a yellow diamond "adjustment handle" will appear when the line is selected. The handle can be clicked and dragged to adjust the routing as well.
- Straight, elbow, and curved line styles: If the connection is a straight line between the shapes, FlowBreeze will force the connector type to straight even if you selected elbow or curved.

Adding Multiple Connectors

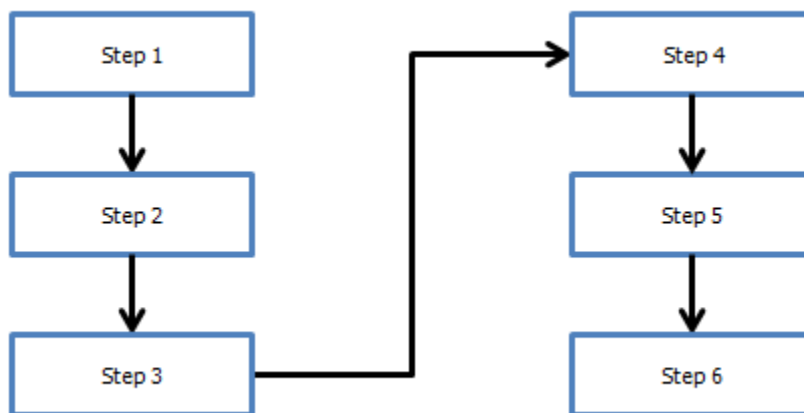
To add multiple connectors, just change the "From shape" and "To shape" selections and click "Add connector" again.

Notes

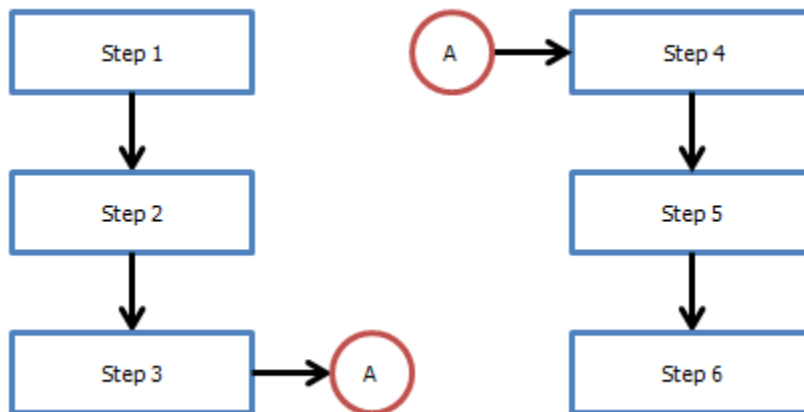
- Press **x** in the upper right of the panel to close it.
- Press **«** in the upper right to collapse the panel to the left edge of Excel.
- Not shown in picture below: you can sort the listings alphabetically, by column, or by row.

9.2 Split Connector into Nodes

The **Split Connector** tool will replace a flow line with two labeled nodes, which indicate a jump from one part of the diagram to another. The before and after picture below an example usage of the tool.



Connector routing - before Split Connector



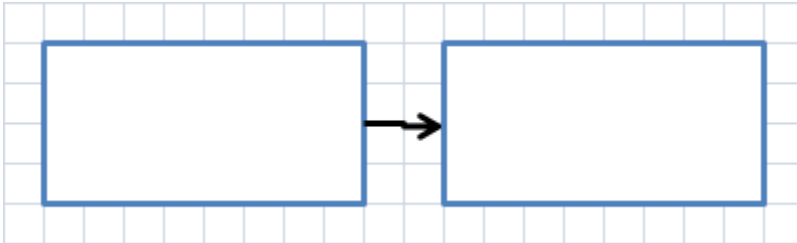
Connector routing - after Split Connector

Dialog Fields

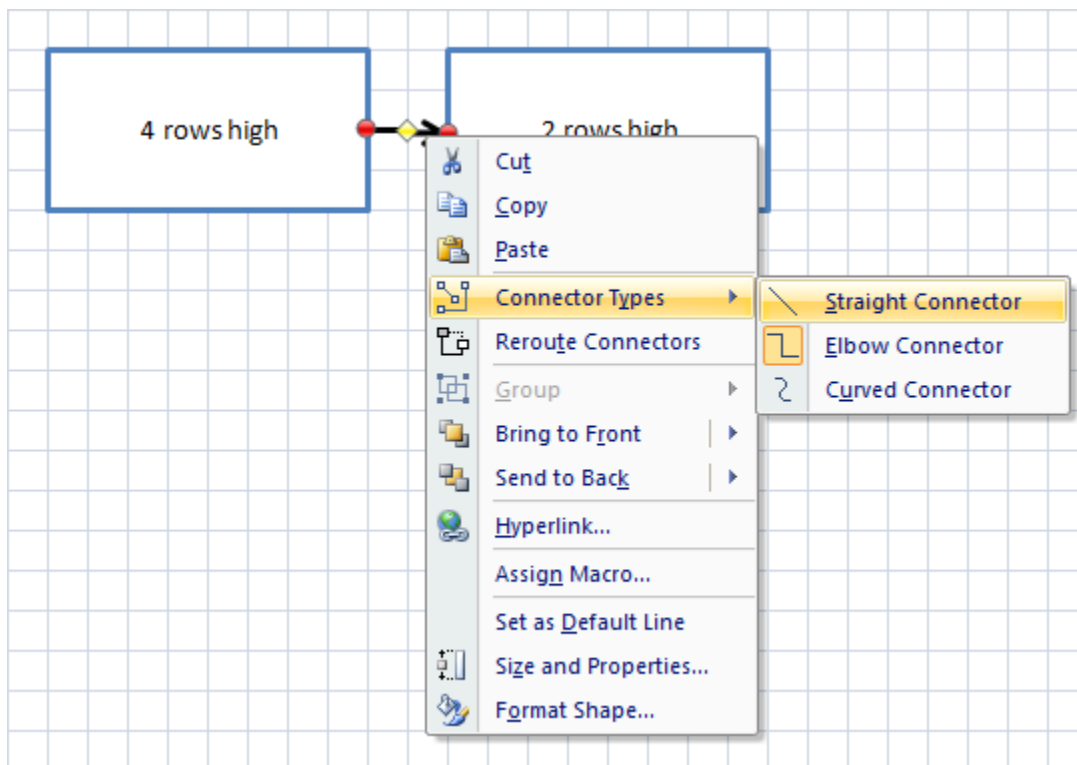
- From shape - Node placement side: The "From shape" box shows the text from the first shape, and the adjoining "Node placement side" lets you select the side that the outgoing labeled node will be placed (relative to the shape).
- To shape - Node placement side: The "To shape" box shows the text from the second shape, and the adjoining "Node placement side" lets you select the side that the incoming labeled node will be placed (relative to the shape).
- Connector node type: The circle "On Page Connector" nodes are typically used for jumps between process steps on the same page, and the 5-sided "Off-Page connector" nodes are typically used to indicate a jump from one page to another.
- Node label: The text that will be placed in the node. The text is automatically assigned when you selected a connector node type, but it can be changed as needed.

9.3 Straighten Connectors

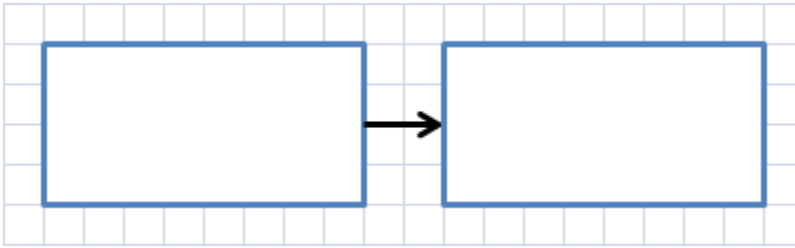
Elbow connectors can appear jagged if they connect two aligned shapes, as shown in the first image below. To fix this problem, click **Layout > Straighten Connectors** from the FlowBreeze toolbar.



You can also manually change the appearance by right-clicking the line and selecting Connector Types > Straight Connector from the context menu, as shown below.



The line will now render without the slight jog in the center.



9.4 Crossover

Accessible from the [Add Connectors](#), this tool inserts a crossover "bump" in a connector line to distinguish between intersecting lines. To use this tool, you must first select the connector before clicking the button.

Important Note

The Crossover tool was designed to overcome a shortcoming in the native Excel lines, which do not have a built-in crossover functionality. However, the Crossover tool should be used mainly for short, straight lines that intersect another line. If used with long lines or elbow connectors, the routing to and from the crossover bump may take irregular form. In most cases, the [Split Connector tool](#) should be used instead for cleaner routing and better readability.

Form Inputs

- Crossover cell: FlowBreeze will try to guess where the bump should go, but you may need to change the location to match the location of the intersecting line.
- Automatically adjust alignment: If checked, FlowBreeze will try to align the crossover.
- Crossover orientation: Indicates whether the crossover should be

horizontally or vertically rotated.

9.5 Work with Flow Lines (Connectors)

Terminology

In flowcharting, an arrow from one process step to the next is often called a "Connector", a "Flow Line", or simply an "Arrow". As the names indicate, they show the direction of process flow. This help file uses the terms "Connector" and "Flow Line" interchangeably. In Excel, there are Arrows that do not stay attached to shapes, as explained below. Also, "Connector" means two things in Excel - a line that *stays connected to a shape* and also as the term used to describe symbols that show a jump from one part of the flowchart to another. These two symbols are called On-Page Connectors and Off-Page Connectors, labeled "A" and "1", respectively, in Picture 1 below.



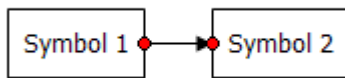
Picture 1 - On and Off-page Connectors

(Do not confuse these types of "Connectors" with flow line "Connectors")

Flow line connectors vs. standard arrows and lines

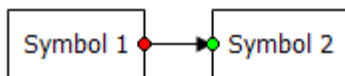
Because of the possible confusion caused by using the word "Connector" for both connecting arrows and two symbol types, the FlowBreeze documentation will try to stick to using the term "flow line". That said, there is one instance when using the term "Connector" makes sense. That is to differentiate between an arrow that "connects" to a shape and a standard line or arrow that does not. (*N.B.: starting with 2007, Excel no longer has arrows that don't connect to shapes.*) A flow line "connector"

will attach to a shape. When the shape is moved, the connector will stay attached to the shape whereas a standard line or arrow will not. To tell whether a flow line is connected to a shape, click on it and you should see a red dot at the connection points, as shown in the image below.



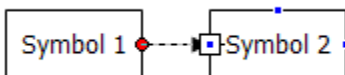
Picture 2 - Connected Flow Line

If one or both of the flow line end points has a green dot when selected (shown below), then it is not connected to the shape. If Symbol 2 were moved, the flow line will not be moved with it. To re-connect a flow line like this, click on the green dot with your mouse and drag it to a connection point on the shape.



Picture 3 - Unconnected Flow Line

Each symbol type has preset connection points. When you position the mouse over a symbol, the cursor will change from an arrow (or cross hair + if you are adding a new flow line manually) to a bomb site ☩ and the connection points will show as blue dots on the symbol border as shown in Picture 4 below.

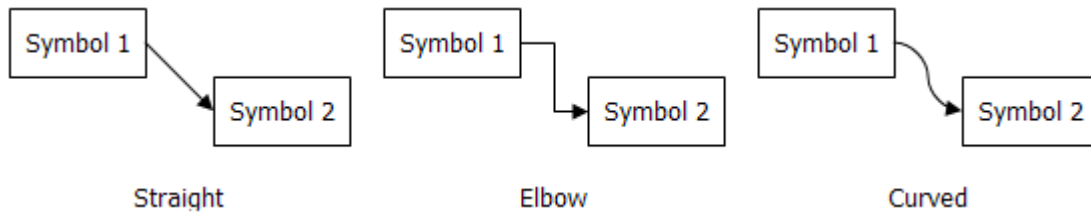


Picture 4 - Connection Points

Flow line connector types

There are three types of flow lines that you can create with FlowBreeze - straight, elbow, and curved, as shown below. The elbow connector is the default in FlowBreeze because it renders as a straight line when the

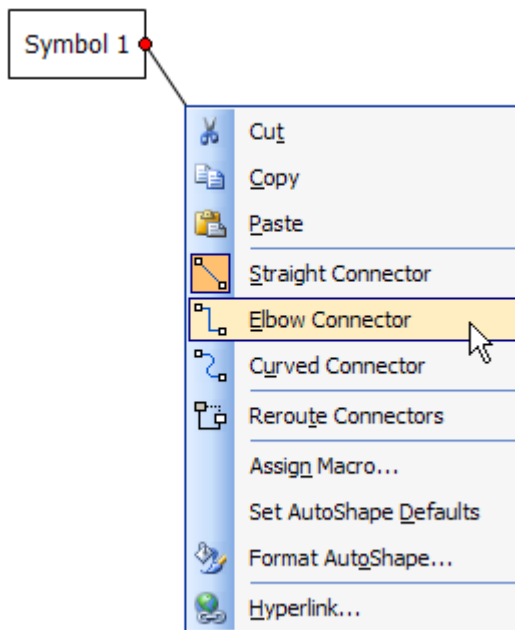
symbols are aligned.



Picture 5 - Flow Line Styles

Changing flow line connector types

You can change the type of flow line by right-clicking on it and selecting the new type as shown below in Picture 6.



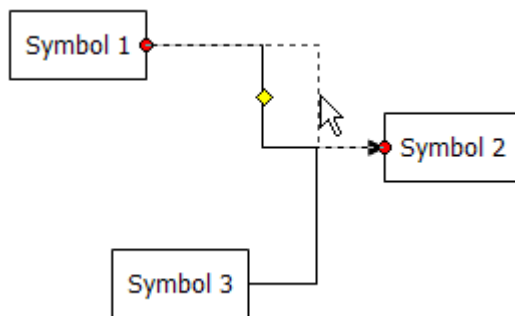
Picture 6 - Change Flow Line Type
(This menu is slightly different in Excel 2007+)

Rerouting Flow Lines

To change the routing of a flow line, you can click on an end point and drag it to a new connection point (while holding the left mouse button down). Also, you can use Excel's built-in "Reroute Connectors" function, shown above in Picture 6. This function will pick the shortest route between two points, so if there are any shapes between the two target

shapes, there is a good chance that the flow line will be routed behind one of them. In such a case, it's easier to manually drag the end point to the new connection point.

You may find a layout where the flow lines don't line up as you would like them to. For example, in picture 7 below, the layout would look better if the flow line from Symbol 1 to Symbol 2 was in vertical alignment with the flow line from Symbol 3 to Symbol 2. To adjust the routing, first click on the flow line. A yellow diamond "handle" will appear. You can click on the yellow handle and drag the routing to a new position (as always, while holding the left mouse button down). The new routing will show as a dashed line while you drag the adjustment handle.



Picture 7 - Flow Line Adjustment Handle

See Also: How to [Snap Objects](#) for an example of routing one flow line to connect to another flow line.

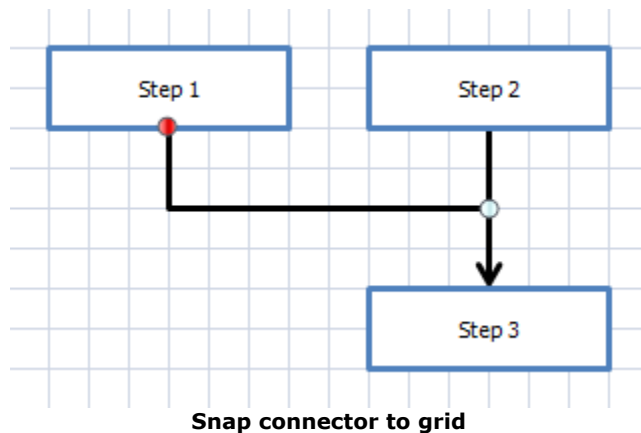
Snapping A Connector to Another Connector

A common goal of FlowBreeze users is to route a connector line so that the end point connects to another connector arrow. The Excel lines do not have the capability to connect to other lines. This section shows two other options.

Option 1 - Use Snap to Grid

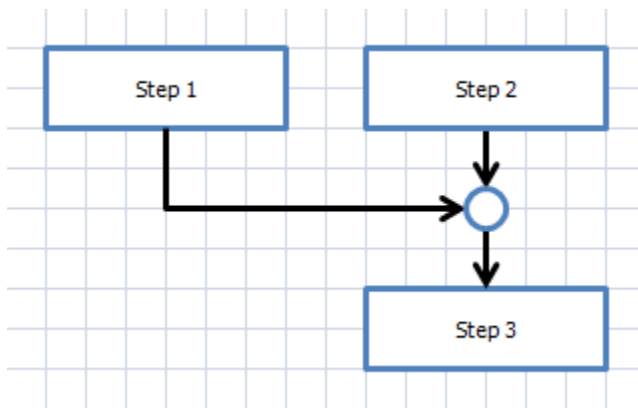
It's natural to assume that "Snap to Shapes" will allow you to snap one connector line to another, however, the "Snap to Shapes" setting will snap lines to all shapes except other lines. The best alternative is to use "Snap to Grid". (FlowBreeze uses the built-in "Snap to Shapes" and "Snap to Grid" Excel tools, but it doesn't have control of their behavior.)

1. Toggle on "Snap to Grid".
2. Drag the step 1 - step 3 connector end point to the desired position.
3. Right-click on the connector and select Format Shape from the context menu.
4. Click the Line Style option in the lane pane of the Format Shape dialog.
5. Using the End Type drop down, change end point from an arrow to a straight line segment.



Option 2 - Add a Connector Node

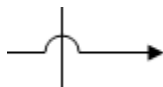
1. Click Add Shapes to open the Add Shapes dialog.
2. Add a circular Connector Node shape.
3. Reroute existing lines to feed into connector node.
4. Add new connector line from node to step 3.
5. Resize connector node as needed for alignment.



Connector snapped to node shape

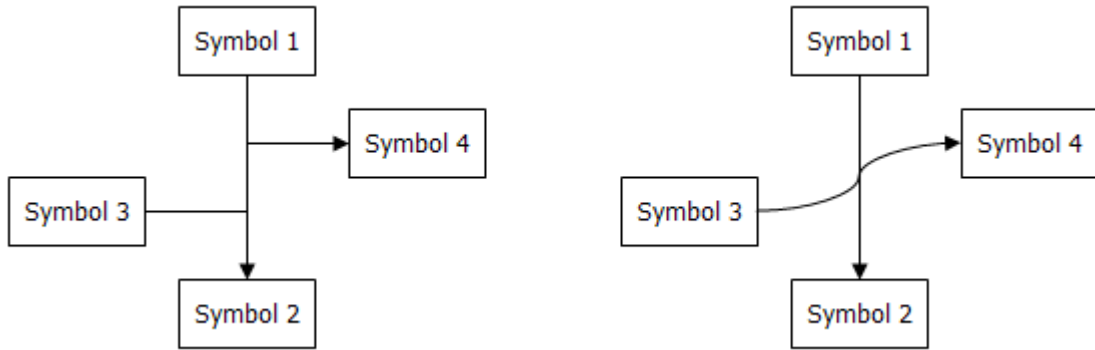
Adding a Jog or Jump to a Flow Line

Unfortunately you can't. Some drawing tools allow you to add a jog to a line to indicate a crossover, as shown in Picture 7.



Picture 7 -
Line Jog


Excel doesn't have this capability, and therefore neither does FlowBreeze. However, there are workarounds. One method is to use the [Split Connector](#) tool to replace the flow line with two connector nodes. Another method is shown below in the picture below. If you have a confusing routing (as shown on left), you can change one of the line types to Curved to make the routings clearer. See the **Changing Flow Line Types** section above for how to do this.



Line Jog Workaround

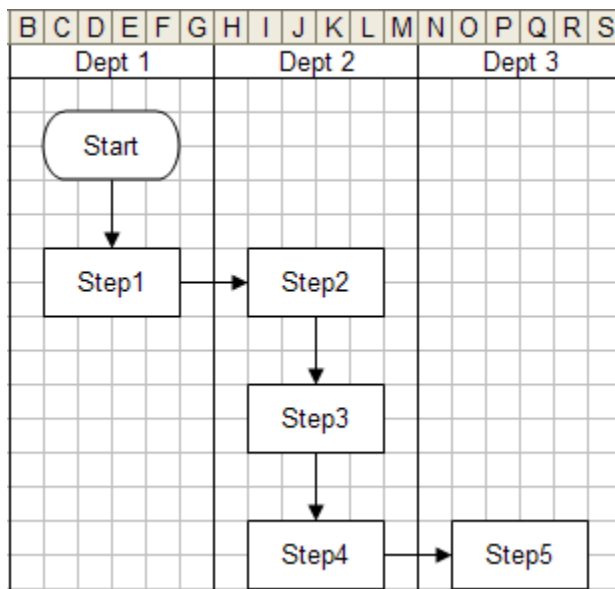
10 Editing Tips

Here are some tips to make editing as fast as possible for you:

1. Turn on [Snap to Grid](#). Click Snap to Grid on the FlowBreeze ribbon.
2. You can move one or more shapes by selecting them and using the keyboard arrow keys. You can only move the shapes in the viewable area, so you may need to scroll as you move them.
3. You can use the Tab key to move the selection from shape to shape.
4. You can [select multiple shapes several ways](#):
 - Holding the Shift key down while clicking on them.
 - Using Select Objects (white arrow) from the FlowBreeze toolbar. Left-click and drag around shapes to select them.
 - Using Shape Selection Tool from the FlowBreeze toolbar.
5. Moving a shape will cause the connectors to reroute automatically.
 - If the connector doesn't reroute, then it wasn't connected. To connect it, click the line's end point and drag it to the shape.
 - If the routing isn't optimal, right-click on the connector and select "Reroute Connectors" from the context menu.
6. Deleting empty cells (or entire rows) between shapes will condense the drawing by shifting all the shapes below the row(s) upward. The same applies to deleting columns. Inserting rows and or columns will expand the drawing. See the in depth sections [Deleting Symbols](#) and [Inserting Symbols](#) for more details.
7. You can copy an existing shape by holding the Ctrl key down then left-clicking and dragging it. Note: The Ctrl key needs to be pressed before the mouse is over the shape.
8. You can copy and paste the format of one shape to another by clicking the first shape, then clicking the  Format Painter button in the toolbar, then clicking the second shape.

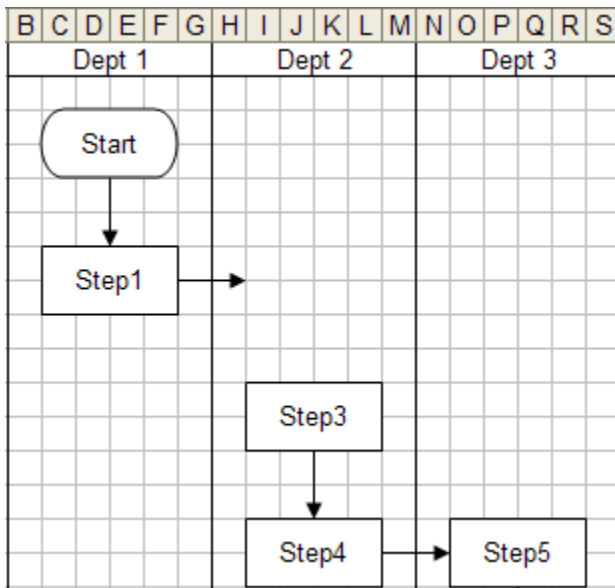
10.1 Deleting Symbols

To delete a symbol, you need to select it and press the Delete button on your keyboard. Tip: Click on the border of a symbol to select it. If you click on the text portion of the symbol, you will be in text editing mode instead. After you delete the symbol, you will most likely need to shift the remaining symbols. The following is a step-by-step guide on how to adjust the layout, given a flowchart that looks like Picture 1.



Picture 1

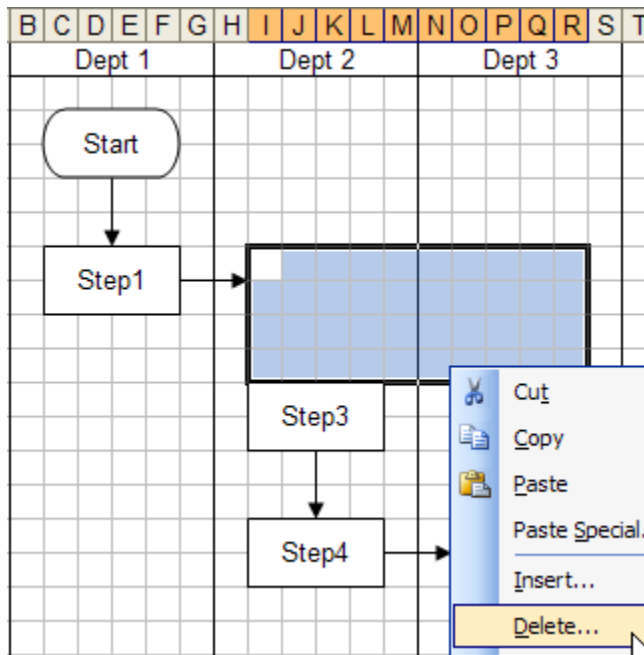
If you want to remove Step 2, it will leave a gap, as shown in Picture 2.



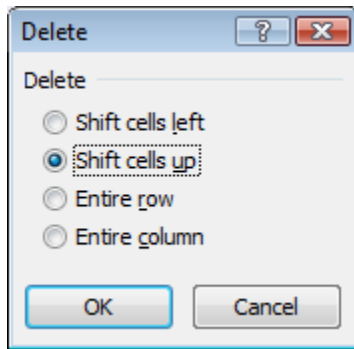
Picture 2

To move the other symbols, you can [select multiple shapes](#) and drag to adjust their location. However, if the flowchart is large it can be a time consuming task to. The faster way is to delete cells or rows / columns. Excel moves shapes when cells are inserted, deleted, or resized. If you select a range of cells, as shown in Picture 3, you can right-click on the cells and select "Delete..." from the context menu, and the Delete Cells dialog will open as shown in Picture 4.

You must select a range of cells as wide or wider than the symbols you want moved. For Decision symbols, the range width selected should encompass the branch labels as well as the Decision symbol itself. In the example shown in Picture 3, the range of cells selected is as wide as both the Dept 2 and Dept 3 swim lanes to ensure that all the symbols are shifted up. If you want everything shifted up, you could also delete entire rows.

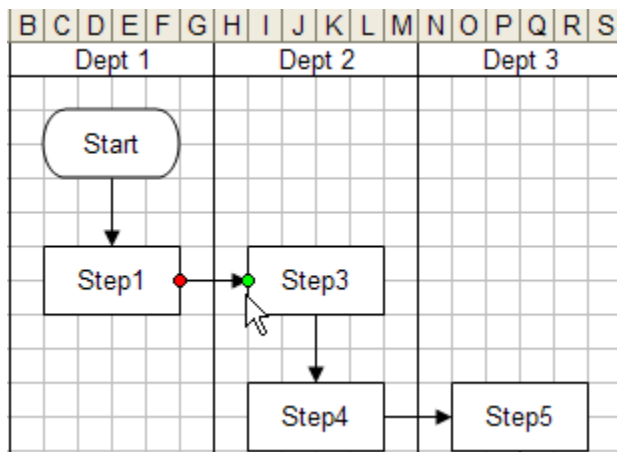


Picture 3



Picture 4

The result can be seen in Picture 5. The connector to Step 3 is not connected. Step 3 was moved into position to be connected to Step 1, but the connection still needs to be closed manually.



Picture 5

Note: When a connector is "connected" to a symbol, there should be a red dot on the end of it when the connector is selected. If it is unconnected, the dot will be clear.

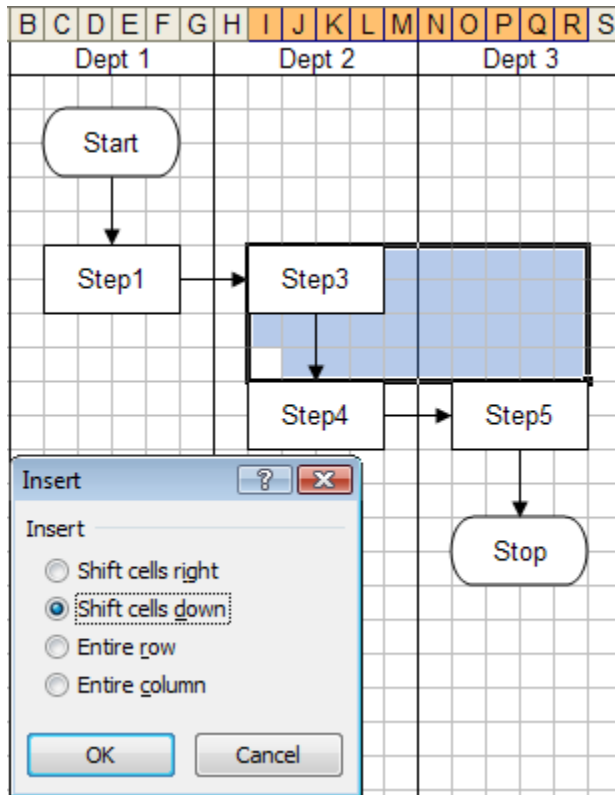
10.2 Inserting Symbols

After you've completed your flowchart, sometimes there's the need to go back and edit the flowchart, adding additional symbols. There are two ways to do this - using FlowBreeze's text-to-flowchart automation or via the toolbar.

Creating Space for the New Symbol

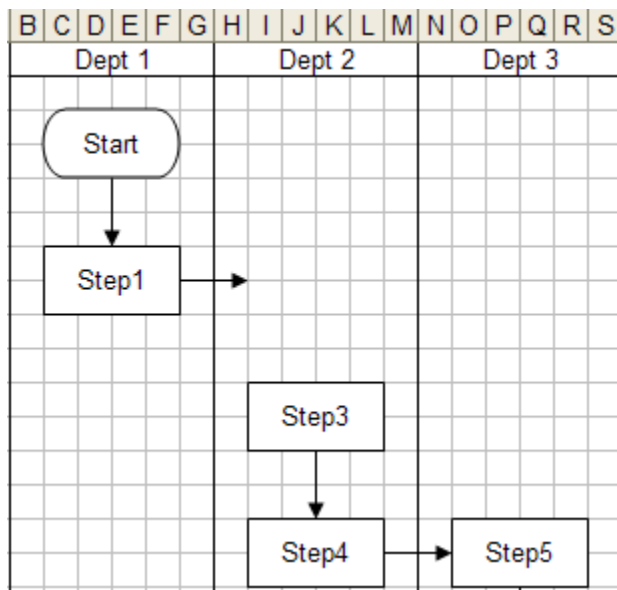
Inserting new flowchart symbols is essentially the same process as [deleting flowchart symbols](#) - just in reverse. As with a Delete operation, we select the range of cells to perform the insert on. Again, the range is selected so that the cell shifting effects the other flowchart symbols in the desired way. In the example in Picture 1, we want to shift the symbols in both the Dept 2 and Dept 3 swim lanes, so we select a range wide enough to encompass the symbols in both lanes. The height of the range selection

allows for a new symbol that is the same height as the Step 3 symbol, but if you want to add a symbol that requires more vertical space, you should select a taller range.



Picture 1

After the cell insert, the symbols have shifted along with the cells and a space has been opened up to place the new flowchart symbol, as shown in Picture 2.



Picture 2

Inserting the Symbol

Method 1 - via Add Symbols and Add Connectors dialogs (Recommended)

See the [Add Symbols](#) and [Add Connector](#) sections for details on using these tools.

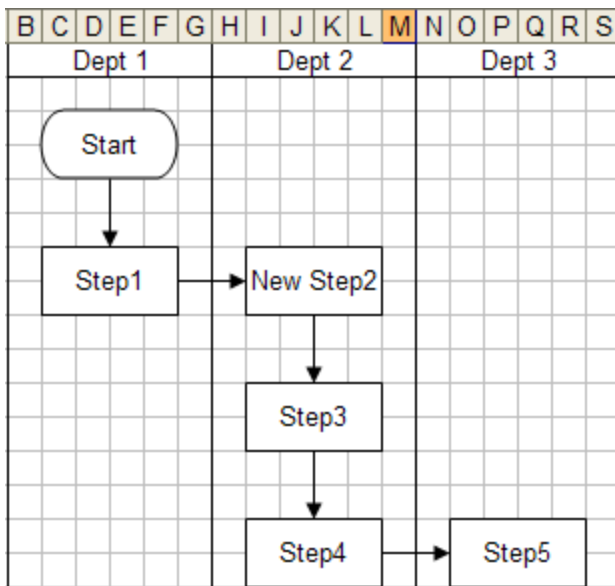
Method 2 - Text-To-Flowchart

1. Click the "Start" button on the FlowBreeze ribbon tab.
2. Type the text for the symbol in the location you want the symbol to appear, and hit Enter.
3. Most likely, you will be prompted to add a flow line from a neighboring symbol. If applicable, select the symbol to route a flow line from and click OK.
4. If needed, type "FL" in a nearby cell to bring up the [Add Connector](#) dialog. Select the new symbol and a symbol to route another flow line to, then click OK.
5. Click the Stop Flowcharting button on the FlowBreeze toolbar.

Method 3 - via FlowBreeze Ribbon

1. Click the **Insert** tab on the main Excel ribbon.
2. Click on the desired symbol from the **Shapes** drop down gallery.
3. Click the sheet to place the symbol.
4. Add text as desired.
5. Change the styling to match other symbols, as needed.

Picture 3 shows a simple example of the a new flowchart symbol that has been added. If you used Method 1 above, then the flow line connectors can be added automatically. If you used Methods 2 or 3, then you will need to insert them manually via the toolbar.



Picture 3

Related

[Change Symbol Styles](#)

10.3 Moving Symbols

Although FlowBreeze will automatically place the flowchart symbols on the drawing sheet, some functions such as the Flowchart Wizard may require manual adjustments after the fact. Symbols can be moved using the mouse or with the arrow keys on your keyboard.

Steps

1. Turn on [Snap to Grid](#).
2. Select one or more symbols.
3. Move the symbols using the arrow keys on your keyboard (left, right, up, and down.)
 - To nudge symbols in any direction, hold down the Ctrl key while pressing one of the arrow keys.
 - Alternately, you can drag the symbols to the new location with your mouse.
4. Reroute any flow line connectors as needed.

Related Topics

- How to [Select Symbols](#).
- How to use the [Symbol Selection Tool](#).
- How to [Work with Flow Lines](#).

10.4 Resizing Symbols

Resizing of shapes is often needed if the text is too long to fit within a given size. FlowBreeze will auto-size shapes when they are created, but there are times when text needs to be edited. If the new text is longer,

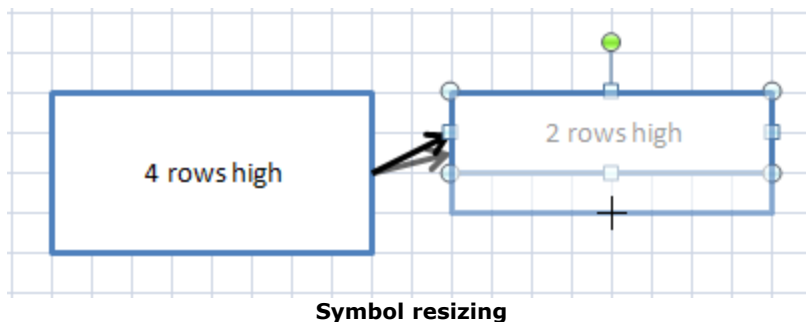
this can lead to an undersized flowchart shape. Also, resizing is often a good idea to keep all the shapes in a row or column a uniform size. Not only does this look nicer, but it improves clarity and readability as well.

Steps

1. Click on the flowchart symbol with your mouse to select it.
2. The symbol's sides and corners will display little circles called "handles".
3. Position your mouse over one of the handles until the mouse cursor changes to little double arrows.
4. Click on the handle and, while holding the left mouse button down, drag the edge of the symbol until you get the size you want.

Tips

- Turn on [Snap to Grid](#) to ensure the symbols remain aligned to the grid.
- While you are re-sizing a symbol, the outline of the new size is shown in dashed lines as shown below.
- Dragging a corner handle allows you to resize the height and width simultaneously.
- Sizing symbol heights and widths to an even number grid units ensures that flow lines run straight.



10.5 Rotating Symbols

Shapes can be rotated in Excel, but there is one significant difference between Excel versions. In Excel 2007 and later, the text will rotate along with the symbol, but if the file is viewed in an older version of Excel (i.e., Excel 2003), the symbol will appear rotated, but the text will not.

Rotate a symbol via size dialog

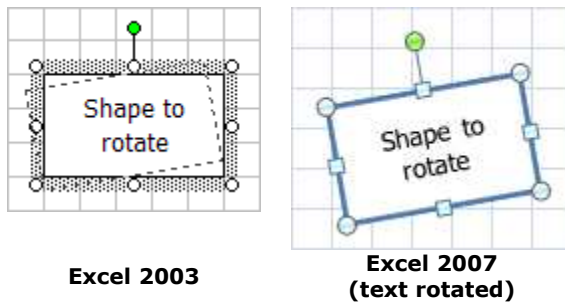
This method allows for more precise control of the angle setting. Also, you can select multiple shapes and rotate them all at once.

- Right-click on the shape to bring up the context menu.
- Click "Size and Properties" to open the Size settings.
- Click the "Size" tab.
- Change "Rotation" to the desired angle. Rotation angles are clockwise.

Rotate a symbol directly on the worksheet

Follow these steps to rotate a symbol directly on the worksheet:

- Select the symbol using your mouse.
- A green dot will appear above the symbol, as shown in the picture below.
- Position your mouse over the green dot until the mouse pointer turns into a circular arrow.
- Click down on the green dot and rotate the symbol to the angle desired.
- A dashed outline of the rotation will be displayed as you adjust the angle.
- Release the left mouse button when the symbol is at the desired angle.



Excel 2003

Excel 2007
(text rotated)

10.6 Snapping Shapes

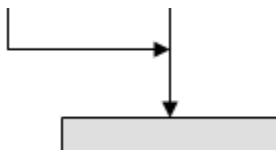
"Snap" is a term that means shapes are aligned, moved, or re-sized in uniform intervals or positions. In Excel, there are two types of snapping available: **Snap to Grid** and **Snap to Shape**. FlowBreeze activates both types of snap automatically a flowcharting session is started. But if you ever close a workbook and re-open it, you will be to turn them back on manually if you want to edit the flowchart.

Snap to Grid

Snaps the symbols to the nearest worksheet cell gridline when positioning or sizing symbols. The Snap to Grid button is located on the main FlowBreeze ribbon tab.

Snap to Shape

Snaps the symbols to the nearest shape. It is activated by clicking Grid > Snap to Shape. A common usage for this is to route flow lines up to other flow lines, as show below.



10.7 Selecting Shapes

There are several different methods used to select symbols. Methods 1 and 2 are good when selecting a few nearby shapes. Methods 3 and 4 are more suitable for selecting multiple shapes.

Method 1 - Mouse click

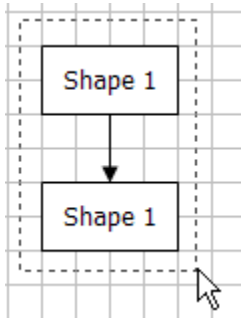
If you want to select a single symbol, click on it with your mouse. However, this can be a little tricky if the symbol contains text or if the border is not visible. If the symbol contains text, you need to click on the border of the symbol, otherwise, clicking in the center will select the text frame inside the symbol. If you already have one or more symbols selected, you can select additional symbols by holding the Shift key down while you click on other symbols. If the symbol has no border (such as a text box used for a branch label), then you can either click around the region until it's finally selected or use Method 2 (recommended).

Method 2 - The Select Objects cursor

This cursor can be accessed by clicking Select Objects from the FlowBreeze toolbar. This will change the mouse pointer to a thick white arrow. You can then select symbols by clicking on the sheet with the left mouse button and dragging around one or more symbols that you wish to select. The symbols must be completely enclosing within the dashed line boundaries, as shown in the picture below. If you release the left mouse button with only half of the symbol encompassed, it will not be selected.

Important: *If you use this tool, you cannot select worksheet cells until*

*you click **Select Shapes** again or double-click on a worksheet cell to toggle it off.*



Method 3 - The Shape Selection tool

The Selection Tool is a special FlowBreeze window that allows you to filter the selection by shape type. More details on how to use it can be found by [clicking here](#).

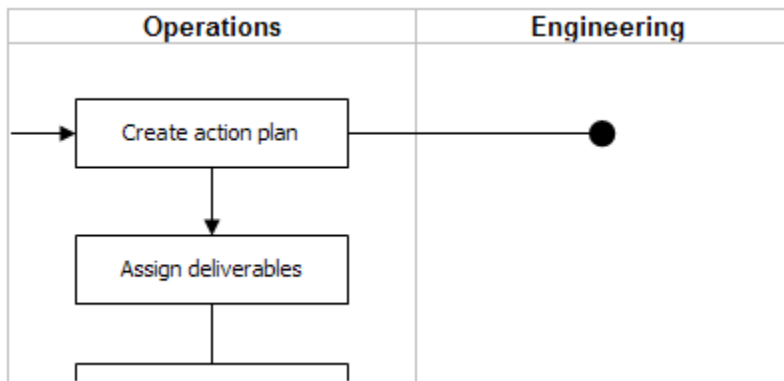
Method 4 - The Select Shapes menu tools

- *Select All*: Selects all the flowchart shapes, connectors, and labels on the current worksheet.
- *Flowchart Symbols*: Selects only the flowchart shapes, connectors, and labels on the current worksheet.
- *Connectors*: Selects only the connectors on the current worksheet.
- *Labels*: Selects only the flowchart labels (borderless text boxes) on the current worksheet.

11 How Do I ...?

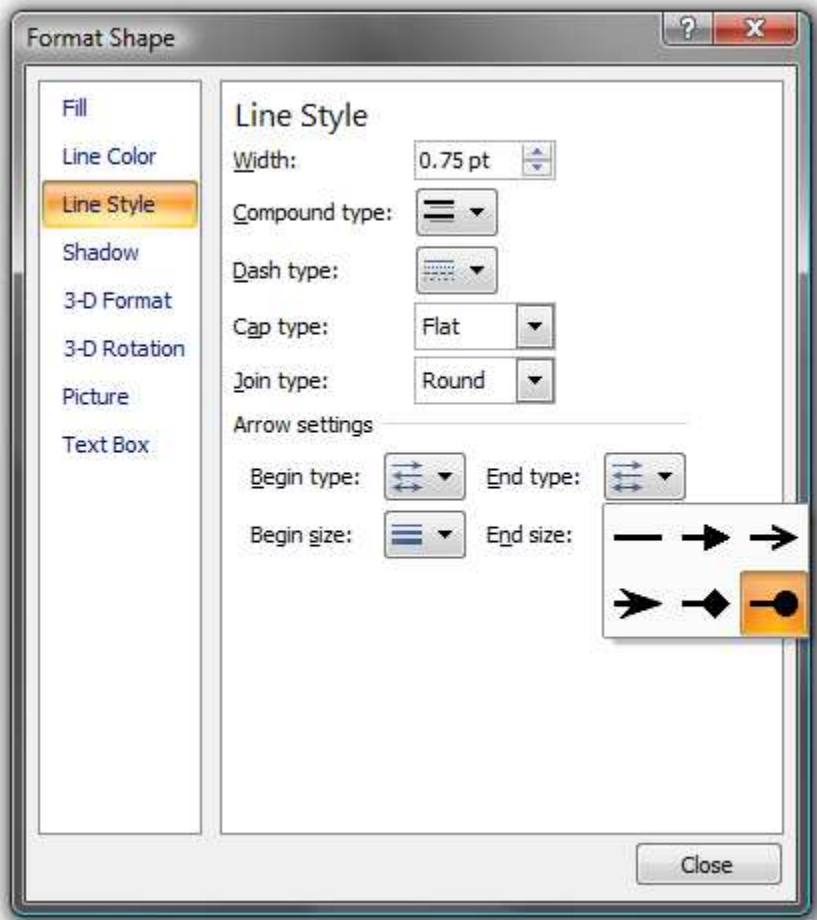
11.1 Add an Assist Line to a Swim Lane Diagram

An assist line in a swim lane diagram shows that a resource is indirectly responsible for a process step. For example, the following picture shows that Operations is directly responsible for the "Create action plan" step and that Engineering will assist with the step.



Steps to add an Assist Line:

1. Add a line from the target flowchart shape to the swim lane of the assisting resource by clicking the "Shapes" drop down and selecting a line from the gallery of symbols. Hold the left mouse button down to draw the line.
2. Right-click on the line and select "Format Autoshape" from the popup menu.
3. Select "Line Style" from the left menu.
4. Change the "Begin style" to straight.
5. Change the "End style" to oval and the "End size" to the largest available, then click "OK" to apply.
6. (Optional) Use the Format Painter tool to copy the style from an existing line to the assist line. The Format Painter button is located on the FlowBreeze tab.



11.2 Call FlowBreeze from VBA

Many FlowBreeze features can be called from VBA. Below is VBA sample that shows how to get a reference to the FlowBreeze add-in and make a simple function call.

Sample VBA

```
Sub RunFlowBreezeOperation()  
  
    Dim addin As COMAddIn  
    Dim flowbreeze As Object  
  
    Set addin = GetFlowBreezeAddin()  
    If Not addin Is Nothing Then  
        Set flowbreeze = addin.Object  
        flowbreeze.CreateWorksheetGrid  
    End If  
  
End Sub  
  
Function GetFlowBreezeAddin() As Object  
  
    Dim addin As COMAddIn  
  
    For Each addin In Application.COMAddIns  
        If Left$(addin.Description, 10) = "FlowBreeze" Then  
            Set GetFlowBreezeAddin = addin  
            Exit Function  
        End If  
    Next  
    Set GetFlowBreezeAddin = Nothing  
  
End Function
```

FlowBreeze Function List (ordered by ribbon appearance)

Note: In FlowBreeze version 4, the function names no longer have to be prefixed with "FB_" (existing code that uses the FB_ prefix will still run).

Flowcharting Group

- [StartFlowcharting](#)
- StopFlowcharting(promptForEndTerminator as Boolean)
- [OpenSettingsForm](#)

- [RunFlowchartWizard](#)
- [WizardApplyParsingSyntax](#)
- [WizardTransposeColumns](#)
- [CreateTemplate](#)
- [CreateVSMTemplate](#)
- [LoadTemplate](#)
- [LoadTemplateInNewWorkbook](#)
- [ExportPicture](#)
- [ExportHTML](#)
- [PrintImage](#)

Insert Group

- [ShowAddSymbolsTaskPane](#)
- [ShowConnectorsTaskPane](#)
- [ShowVSMTaskPane](#)
- [InsertBranch](#)
- [InsertGroupBox](#)
- [InsertDecisionBlocks](#)

Edit Group

- [EditFlowchart](#)
- [ApplyDefaultStyles](#)
- [ApplyBlackAndWhiteStyles](#)
- [SetLineWidths\(lineWidth as Single\)](#)

Layout Group

- [ReAlignShapes](#)
- [CreateWorksheetGrid](#)
- [ClearShading](#)

- [SnapAll](#)

Select Group

- [GroupAllShapes](#)
- [UngroupAllShapes](#)
- [LoadShapeSelectionTool](#)
- [SelectFlowchartConnectors](#)
- [SelectFlowchartLabels](#)
- [SelectFlowchartSymbols](#)

Connectors Group

- [StraightenFlowchartConnectors](#)
- [SplitFlowchartConnectors](#)

Tools Group

- [CreateSymbolKey](#)
- [ExtractTextFromShapes](#)

11.3 Change Symbol Styles

Method 1 - Flowchart Editor


See the [Flowchart Editor](#) section for more details.

Method 2 - Apply Default Styles

Use the [Apply Styles](#) tool if you want to apply the default style as listed in the settings dialog.

Method 3 - Format Painter

If a symbol (or flow line) exists on the worksheet having the style you want, then:

1. Click on the border of symbol whose style you want to copy.
2. Click the **Format Painter** button .
3. Click on the target symbol, and the style will be applied.

Method 4 - Manual Formatting

Note: FlowBreeze cannot support custom formatting when creating new shapes or using the Flowchart Editor.

1. Click on the symbol to select it.
2. Click on the tab labeled "Format" that appears on the ribbon.
3. In the "Shape Styles" section, there is a clickable gallery of fill styles.

If you prefer a custom fill color, try this:

1. Right-click on the symbol and select "Format Shape".
2. On the Format Shape dialog, select "Fill" from the left column.
3. Click the "Color" dropdown to select a new fill color.
4. Click "Close".

Note: If you click on the center of a symbol, you will usually select the text instead of the symbol itself, which is why clicking the border is recommended.

11.4 Change a Symbol Type

Flowchart Editor

The automated way to change a symbol type in FlowBreeze is to use the [Flowchart Editor](#). Excel has a built-in Change Autoshape tool, however, using this tool will cause all the connector lines to become disconnected from the shape, and you will need to reconnect them by dragging the end points to the symbol's sides. The Flowchart Editor corrects this problem.

Manual editing

To manually change the shape type, follow the steps below.

- Click the symbol's border to select it.
- Excel should automatically display and select a Format tab.
- Click "Edit Shape".
- Click Change Autoshape from the drop down, and select the new symbol type from the gallery.
- Any connectors routed to the symbol will now be disconnected. Click the connector line and drag the end point to the side of the symbol to reconnect it.


11.5 Edit Symbol Text

To edit the symbol text, you need to select the text, modify it as needed, then handle any resizing and flowchart re-layout issues.

Selecting Text

To select the text, click on the interior of the symbol. You can select

portions of the text using the mouse or the Shift and Arrow keys on the keyboard.

If you have the Select Objects tool  enabled, you cannot select the text directly. Clicking anywhere on the symbol will select the symbol itself - not the text. You can either right-click on the symbol and select "Edit Text" from the popup menu, or you toggle the Select Objects tool off by clicking it again on the toolbar.

Modifying Text

You can edit the text within the symbol just as you would with any text editor. Portions of the text can be selected and formatted with the Excel formatting controls available on the Home. This includes standard formatting functions like bold, italic, underline, and color formatting.

Note: Hitting the Enter key will add a line break within the symbol's text. When you are done editing the text, select anywhere else on the worksheet to exit editing mode.

Resizing and Re-Layout

After you modify the text, the length of the text may exceed the size of the symbol. Check the [Resize Symbols](#) and [Move Symbols](#) sections of the help file if needed.

11.6 Export a Flowchart to Word or PowerPoint Options

This page covers three ways to get your flowchart from Excel to another document:

- Embed an editable Excel file in the other document.
- Copy and paste into another document.
- Export the flowchart as an image, and then insert the file image into the document.

Option 1 - Embed the Flowchart

When you embed an Excel file in Word or PowerPoint it appears as a resizable image, but you can double-click to edit it. To embed the flowchart, follow these steps:

1. Save and close the Excel file containing the flowchart. The sheet containing the flowchart needs to be the active sheet, and the flowchart should be scrolled into view.
2. In Word or PowerPoint:
 - Select the location for the flowchart to be placed.
 - On the Insert tab, click Object. (*Use the Insert menu in Word 2003 and older versions.*)
 - Select "Create from file" and use browse button to locate the Excel file.
 - When you click OK, the Excel file will be embedded in the document.
3. Click and drag the edge of the embedded object frame to resize as needed.

Should You "Link to File"?

Recommended answer: No.

If you link to file:

- You cannot scroll or resize the visible worksheet range. This is a significant problem if you need to adjust the viewable portion of the embedded flowchart.
- Despite the linking implication, changes to the original Excel file are not automatically updated in the Word document. You must right-click on the embedded object and select Update Link from the pop-up menu to force a refresh.

Adjusting the View

In the flowchart view needs to be adjusted:

- Double-click the embedded Excel file to activate it.
- Scroll the flowchart into view as desired.
- While still active, click and drag the edge border to resize the visible worksheet range.

Editing Embedded Flowcharts

If you double-click the embedded object, you have full access to all of Excel's tools - including the FlowBreeze features.

Option 2 - Copy and Paste into an Office Document

1. Click Select Shapes > Select All from the FlowBreeze toolbar.
2. Use the normal Copy function. (In Excel 2010 and later, *do not use the Copy Picture tool*. It will not give us the Paste Special option we need in

the next step.)

3. In the target file, click Paste Special and select the "Picture (Enhanced Metafile)" option. Metafiles are a special type of image that render the text clearly when resized.

Option 3 - Export Flowchart as Image

The last option is to use the [Export as Picture](#) tool, and then to insert the image file into the target document. But if you need to resize the image in the target document, Option 2 provides a better image format for rendering legible text.

11.7 Import and Export Settings

To backup your settings or to standardize settings between users, you can export settings from one computer and import them into another. To open the import / export tool, click Help > Import / Export Settings. Select whether to import or export then click next. You will be prompted for the file name.

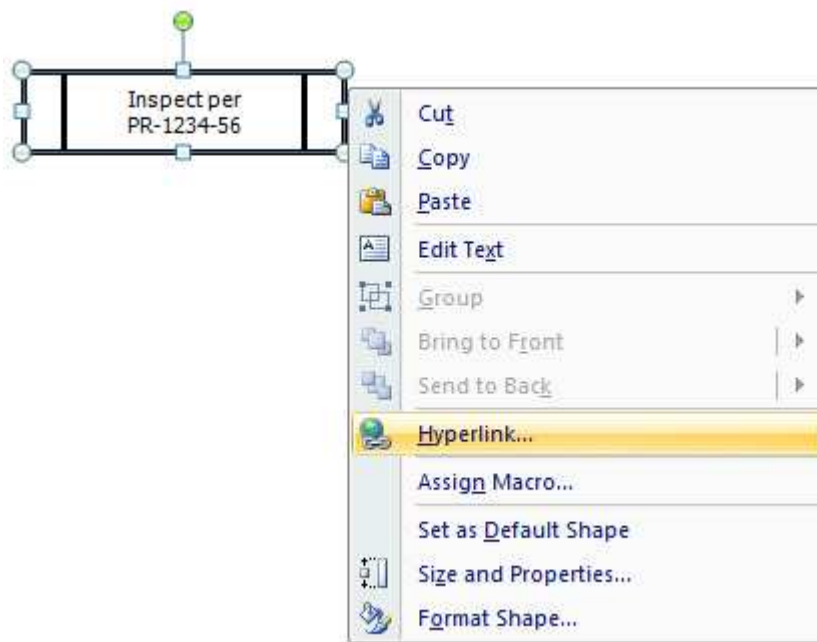
If the Template Generator has a logo assigned, it will also be exported and should be copied to the target computer. When importing the settings, the import tool will look for the logo file in the same folder that the settings file is located.

11.8 Insert a Hyperlink

Flowchart symbols can hyperlink to other documents, web sites, email addresses, to other sheets in the same workbook, or other locations within the same flowchart.

How To Add a Hyperlink

To insert a hyperlink, right-click on the symbol and select Hyperlink from the popup menu as shown in Picture 1, below.

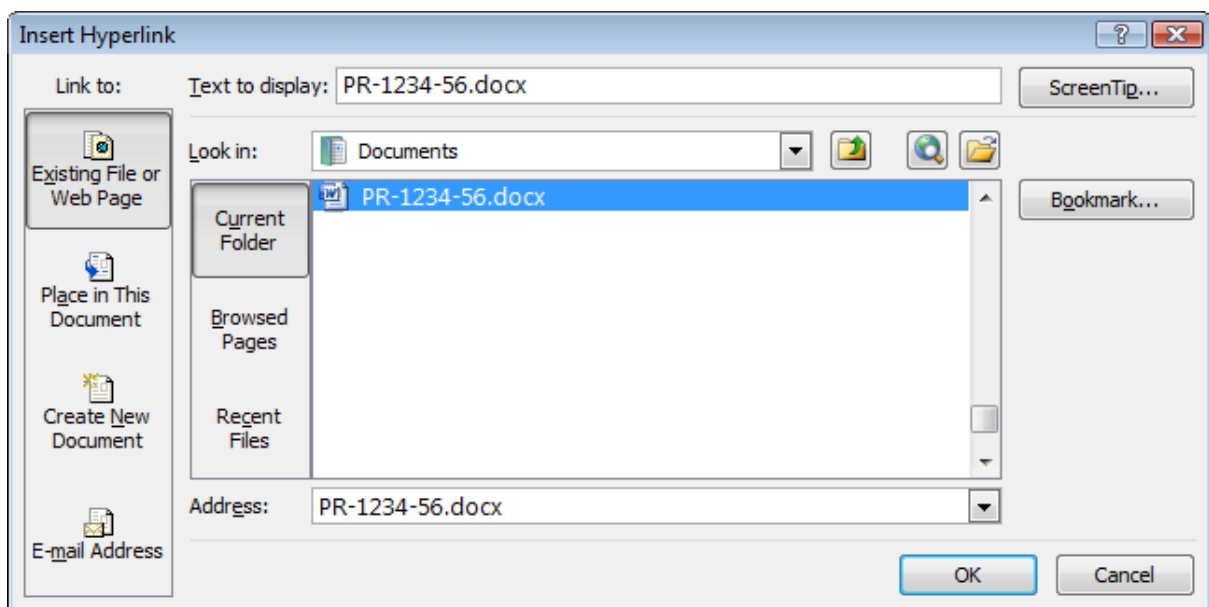


Right-Click Popup Menu

This will open the Insert Hyperlink window, as shown in Picture 2, below. It allows you to browse to the document and link to it. If the document contains internal bookmarks, you can link directly to the bookmark (see the Word help documentation for information on how to add bookmarks to your documents). Clicking the "ScreenTip..." button lets you enter text that will display when the mouse is positioned over the symbol containing

the hyperlink.

If you choose "Place in This Document" from the "Link to:" column, you can select a worksheet and cell reference within the current Excel file. You can also link to a Defined Name range. You cannot link directly to another symbol, so the best alternative is to link to a cell beside the target symbol.



Insert Hyperlink Window

Removing Hyperlinks

If you wish to remove a hyperlink, right-click on the symbol and a Remove Hyperlink option will be available on the popup menu.

Selecting Shapes with Hyperlinks

Clicking on a shape with a hyperlink will follow the link, so in order to select it, you will need to click on it with your right mouse button.

Formatting Links

Linked shapes do not have the characteristic underlined text that is common on the internet. To signal that the shape is linked, you can select the shape (or text within the shape) and use the Underline formatting available on the Excel Home tab.

Note on Network Drives

If you link to a file on a mapped network drive (e.g., G:, M:, T:), you need to be careful of special situations. If you save the file to your system, then later move it to a network drive, the hyperlink may break since other users might not have the network drive mapped to the same letter. It is best to use UNC paths when possible, which look like `\servername\directory\...`

11.9 Insert a Label

FlowBreeze allows two ways to insert labels and text boxes on the drawing. Text boxes are useful for adding comments to flow lines to indicate the logic behind the flow direction. The most common occurrence is for branches coming out of Decision symbols. There are several reasons why labels should be placed into TextBoxes instead of directly on the worksheet:

- Labels in TextBoxes can be copied to Word or PowerPoint
- Labels in TextBoxes can be selected and moved around the drawing like other shapes.
- The automatic formatting tools will apply styles to labels in TextBoxes.

Method 1 - Prefix w/ Label

If you are *in flowcharting mode*, typing "LBL" followed by the prefix delimiter and the label contents will add the label. That sounds more complex than it is, so here's an example:

```
lbl:Option 1
```

Will add a TextBox containing the phrase "Option 1" at the cell location where you entered it. The "lbl" portion is not case sensitive, so it can be "lbl" or "LBL". The ":" is the default prefix delimiter. If you have FlowBreeze Standard Edition, you may change the prefix delimiter and the label font on the [General](#) tab of the Settings window.

Method 2 - Prefix Only

Like the previous method, you can type "LBL" (without the quotes / not case sensitive) to add a label. Because no text appears after "LBL", it will prompt for the label text with a simple Add Label dialog. Just type the label text and hit the Enter key (or click OK.) FlowBreeze will add the label to the current cell.

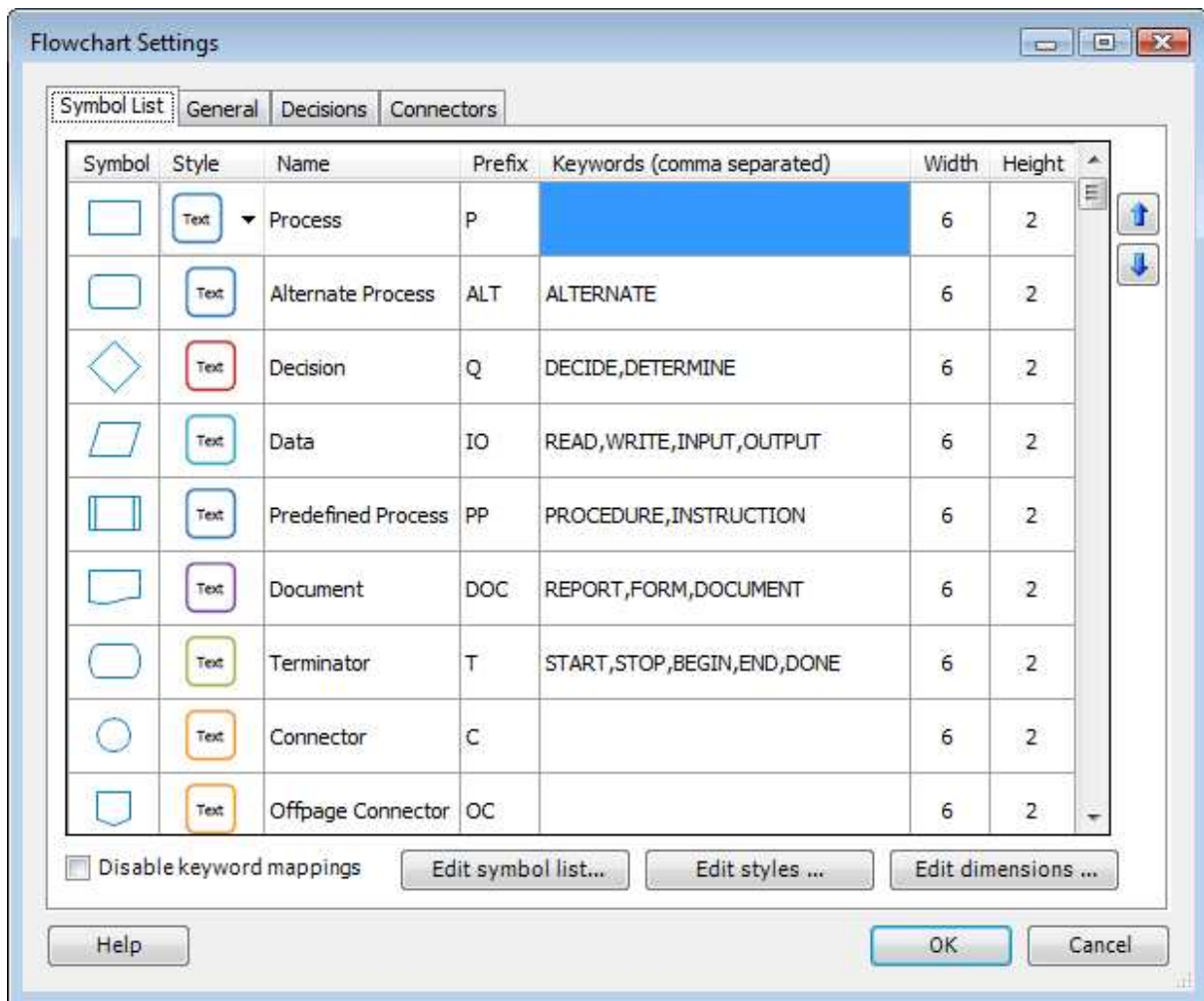
Method 3 - via Add Symbols dialog

The standard Excel text box can be added by using the Add Symbols dialog. The text box item is located in the Flowchart shapes group.

11.10 Using Keywords and Prefixes

Keywords and Prefixes are central to the power of FlowBreeze. In a nutshell, these are the two ways that FlowBreeze automatically generates

flowchart symbols and other shapes from your text. Here's how each works.



**Picture 1 - Symbol List
(from the Settings window)**

Keywords

- Definition: A "keyword" is a word that you assign to a symbol. Whenever you use a keyword in an entry, FlowBreeze will spot the keyword and generate the associated symbol.
- Usage: You define keywords for a symbol in the [Settings](#) window, as shown in Picture 1 above.
- Example: Picture 1 shows that the word "REPORT" is set as a keyword for the Document symbol. If you are in flowcharting mode and type

"Print TPS report", FlowBreeze will detect the keyword "report" (keywords are not case sensitive) and generate a Document symbol containing the text entered.

- **Exact match:** Place an equal sign (=) in front of a keyword to associate it to a symbol only when the flowchart text consists solely of the keyword.
- **Priority:** Again referring Picture 1, there are two buttons with up / down arrows next to the active symbols list. These let you set the order in which Keywords are evaluated. If an entry contains keywords associated with two different shapes, the shape with the higher priority on the list will be generated.
- **Default Symbol:** If an entry contains no keywords (or prefixes), then a process symbol (rectangle) is generated by default.

Note: Keywords must be whole words. Therefore the plural form of a keyword would not be recognized unless it was explicitly added to the keyword list.

Prefixes

- **Definition:** A "prefix" is abbreviation that you assign to a symbol. Whenever you put a prefix at the beginning of an entry, followed by use a prefix delimiter, FlowBreeze will spot the prefix and generate the associated symbol.
- **Usage:** You define the prefix for a symbol in the [Settings](#) window, as shown in Picture 1 above.
- **Example:** Picture 1 shows that "IO" is the prefix for the Data symbol. You can force a Data symbol to be generated by using the prefix "io" even if none of the symbol's text will contain a keyword. So if you type "io:get buffer file", FlowBreeze will detect the prefix and generate a data

symbol containing the words "Get buffer file". Prefixes are not case sensitive.

- **Prefix Delimiter:** Referring to the example above, the colon (":") in "io: get buffer file" is the prefix delimiter. In order for FlowBreeze to recognize that a prefix is being used, the prefix must be separated from the entry with a delimiter. You can set a different delimiter on the [General](#) tab of the Settings window.
- **Reserved Prefixes:** No two symbols can have the same prefix, and there are several prefixes reserved by FlowBreeze for special use. These include: BR, FL, GFX, LBL, PIC, SHP, and TB.

Note: You can also use prefixes to create empty symbols with no text in them.

Evaluation Priority

If an entry contains both a prefix and a keyword, the prefix will have precedence over the keyword. The evaluation priority to determine a shape type is as follows:

1. Prefixes
2. Special rules for decisions and connector nodes.
3. Keywords

11.11 Work with Grouped Symbols

Excel allows you to **Group** shapes together so that they can be treated as a single shape. This lets you select the grouped items as one item and

move, copy, or delete it more easily. It also protects the layout of a set of shapes, since it fixes the grouped items in place.

Group menu functions

- **Group:** Allows you manipulate a set of shapes as a single shape. To group a set of symbols, first you need to select the symbols, then apply the Group function.
- **Ungroup:** Ungroups the shapes so they can be individually moved, edited, or deleted.
- **Regroup:** If a shape had previously been in a group that was later ungrouped, you can Regroup the entire set of shapes by clicking on a single one and applying the Regroup function.
- **Group All Shapes:** Groups all the shapes on the sheet in a single click.
- **Ungroup All Shapes:** Ungroups all the shapes on the sheet in a single click.

Group, Ungroup, and Regroup are built-in Excel features. Group All Shapes and Ungroup All Shapes are features added by FlowBreeze.

12 Support

12.1 FlowBreeze Support

Contact information

BreezeTree's support can be contacted via email at support@breezetreec.com.

When contacting support ...

If you need to contact support to report a problem, the following information is helpful when contacting support.

- Which FlowBreeze feature you were trying to use when the error occurred.
- If possible, the steps needed to re-produce the problem.
- If possible, a copy of the Excel file you were working on. (All material is treated as confidential.)
- The version of Excel.
- The version of Windows you are running.
- The version of FlowBreeze that you are running. From the FlowBreeze toolbar, click Help > About to see the version number.
- The contents of the [FlowBreeze event log](#).

12.2 Log Files

FlowBreeze creates a log for errors and other events. If contacting support to report a problem, it is often helpful to view the following log files:

- \Documents\FlowBreezeEvents.log

- \Documents\Add-in Express\adxloader.log
- \Documents\Add-in Express\adxregistrator.log

The log file is also available by clicking Help > View Event Log from the FlowBreeze ribbon tab.

12.3 Troubleshooting

Installation Error

If you receive an error message during installation, the following items cover nearly all the cases reported to our support:

1. The majority of installation problems are solved by running the Admin-Level Setup, which is available on the BreezeTree Downloads page. As the name implies, it does require administrative privileges on your system. Depending on your organization's policies, you may need to have your IT department install it for you.
2. FlowBreeze runs on Windows only. (Sorry - we are not able to provide a Mac compatible version.)
3. If you have previously installed FlowBreeze, you must uninstall the older version before installing the updated one.

FlowBreeze Ribbon (Toolbar)

If the FlowBreeze ribbon tab does not appear when you open Excel, please follow these steps to troubleshoot the problem.

1. Per User Installation

The default installer does not require administrative privileges and will install for only the currently logged in user. If you, or someone from your IT department, logged in under an admin account to install FlowBreeze, it will only be available in Excel to the admin login account.

To fix this problem, there are two options: (1) Uninstall FlowBreeze and reinstall it under the user's account. (2) Uninstall FlowBreeze, and then download and install the admin installer from the BreezeTree downloads page, which will install for all user profiles on the system.

2. Check the Disabled Items list

Excel 2010 - 2016

- Click the File tab on the Excel ribbon.
- Click the 'Excel Options' button in the left menu.
- Click 'Add-Ins' in the left menu of the Excel Options window.
- Click the 'Manage' drop down, select 'Disabled Items' from the list, then click the 'Go...' button.
- If FlowBreeze is listed, select it and click the 'Enable' button, then restart Excel.

Excel 2007

- Click the Office Button in the upper left corner of Excel.
- Click the 'Excel Options' button on the bottom-right corner of the window.
- Click 'Add-Ins' in the left menu of the Excel Options window.
- Click the 'Manage' drop down, select 'Disabled Items' from the list, then click the 'Go...' button.
- If FlowBreeze is listed, select it and click the 'Enable' button, then restart Excel.

3. Check the COM Add-ins list

Excel 2010 - 2016:

- Click the File tab on the Excel ribbon.
- Click the 'Excel Options' button in the left menu.

- Click 'Add-Ins' in the left menu of the Excel Options window.
- Click the 'Manage' drop down, select 'COM Add-ins' from the list, then click the 'Go...' button.
- If FlowBreeze3 is listed, make sure the checkbox next to it is checked.

Excel 2007:

- Click the Office Button in the upper left corner of Excel.
- Click the 'Excel Options' button on the bottom-right corner of the window.
- Click 'Add-Ins' in the left menu of the Excel Options window.
- Click the 'Manage' drop down, select 'COM Add-ins' from the list, then click the 'Go...' button.
- If FlowBreeze3 is listed, make sure the checkbox next to it is checked.

4. Check the security settings

Excel 2010 - 2016:

- Click the File tab on the Excel ribbon.
- Click the 'Excel Options' button in the left menu.
- Click "Trust Center" on the left navigation panel.
- Click the "Trust Center Settings" button.
- The "Message Bar" panel should be open by default. Make sure that the "Show in Message Bar..." option is selected.
- Next, click "Add-Ins" from the left menu and set the options per the **Add-ins Options** section below.

Excel 2007:

- Click the Office Button in the upper left corner of Excel 2007.

- On the bottom-right of the popup menu, click the "Excel Options" button.
- Click "Trust Center" on the left navigation panel.
- Click the "Trust Center Settings" button.
- The "Message Bar" panel should be open by default. Make sure that the "Show in Message Bar..." option is selected.
- Next, click "Add-Ins" from the left menu and set the following options;

Add-ins Options

- Option 1:
 - Check the box labeled "Require Application Add-ins to be signed by Trusted Publisher"
 - Uncheck "Disable notification for unsigned add-ins"
 - Uncheck "Disable all Application Add-ins"
- Option 2: (not recommended)
 - Leave all the settings on this panel Unchecked.

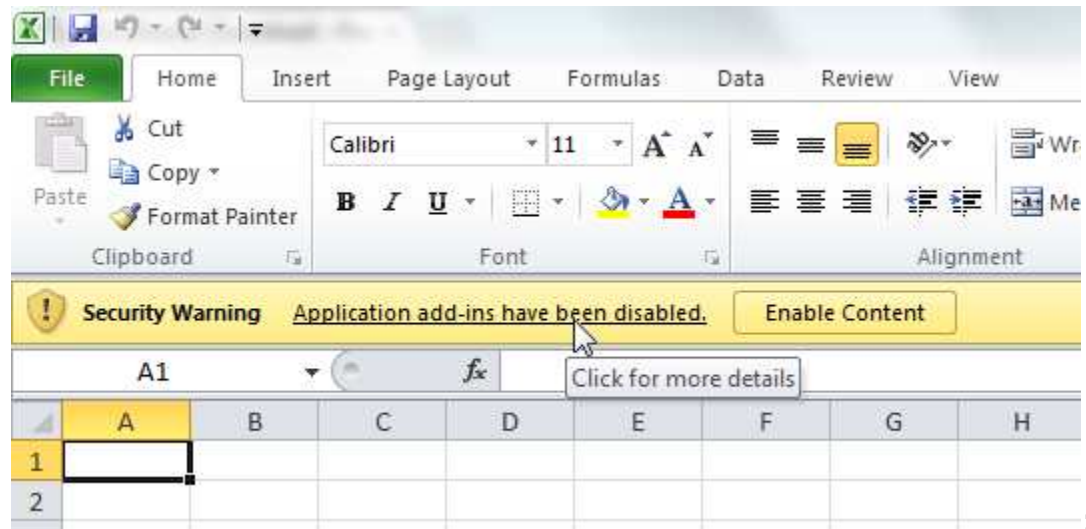
Excel needs to be restarted for these security changes to take effect. If you selected Option 1, then the next time you restart Excel, follow the steps in **Security Warning - Enable FlowBreeze** (below).

5. Security Warning - Enable FlowBreeze (Excel 2007 - 2016)

If "Require Application Add-ins to be signed by Trusted Publisher" is checked in the Excel Trust Center (see the section above), you will see a warning when you open Excel after installing FlowBreeze. The actions differ slightly between Excel 2007 - 2016.

Excel 2010 - 2016:

If you see the security message shown below, click the "Application add-ins have been disabled" label. (Clicking "Enable Content" will enable it only for the current session).



Excel will show the info screen below. Click the "Enable Content" dropdown and select "Advanced Options".

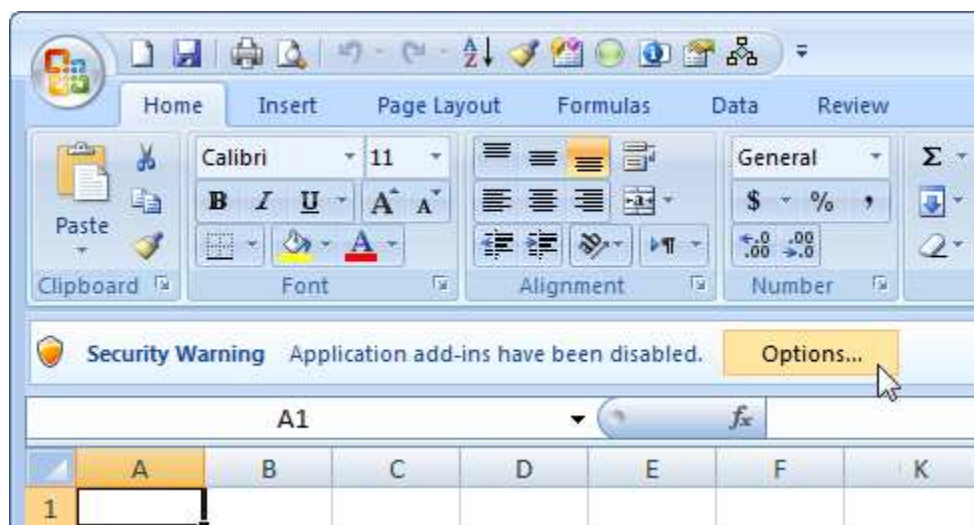


On the security options dialog, select "Enable all code published by this publisher" and click OK.



Excel 2007:

If you see the security message shown below, click the "Options" button.



On the security options dialog select "Enable all code published by this publisher" and click OK.



6. Installation - restart required

If Excel was running during the installation, it will need to be re-started again for the FlowBreeze toolbar to display.

7. Download Source

Did you download the program from www.breezetree.com? The BreezeTree website is the only official site for downloading FlowBreeze. To get the latest version, download FlowBreeze only from www.breezetree.com. Download sites (including popular ones such as download.com) often host old versions of FlowBreeze. Downloading

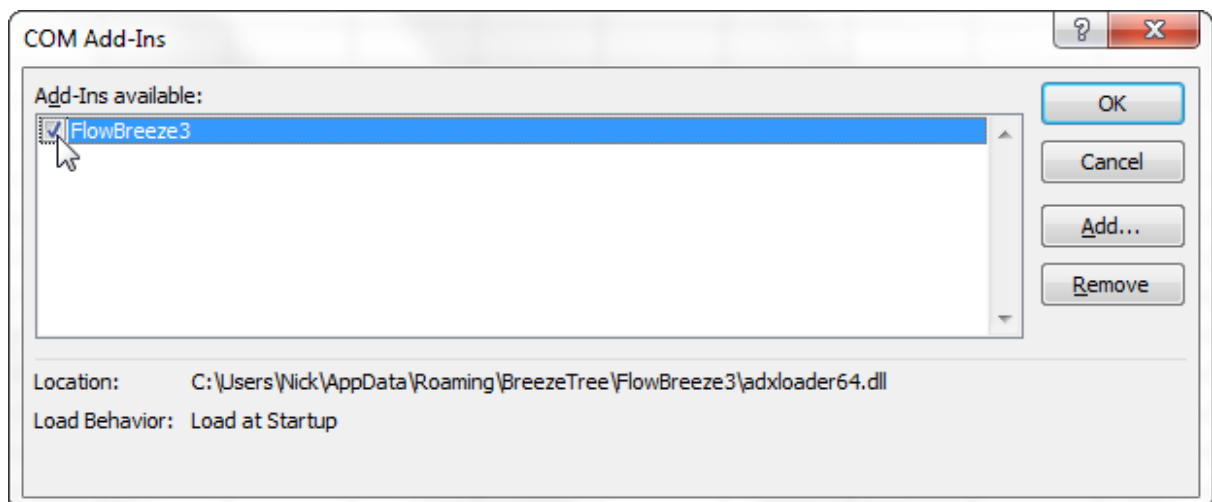
from any other site is not recommended.

If the above checks didn't reveal the problem, please contact BreezeTree at support@breetree.com. The following information would be helpful to determine the root cause.

- If you click Start > All Programs, is FlowBreeze listed among the applications?
- What version of Excel are you running?
- What Windows version are you running?
- Are you running any other add-ins in Excel?

12.4 How to Speed-Up Loading

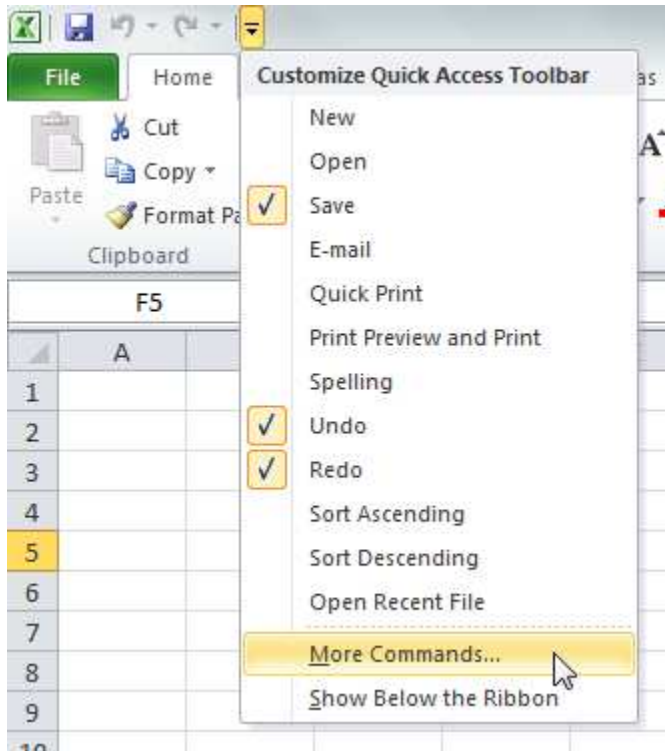
For most users, FlowBreeze is not the kind of tool that you use everyday. Every add-in that gets loaded into Excel can slow its startup. To speed things up, you can load FlowBreeze on demand, or unload it when not in use, via the COM Add-ins dialog in Excel, shown in the image below. Toggling the checkbox next to FlowBreeze will load and unload the add-in.



COM Add-ins Dialog

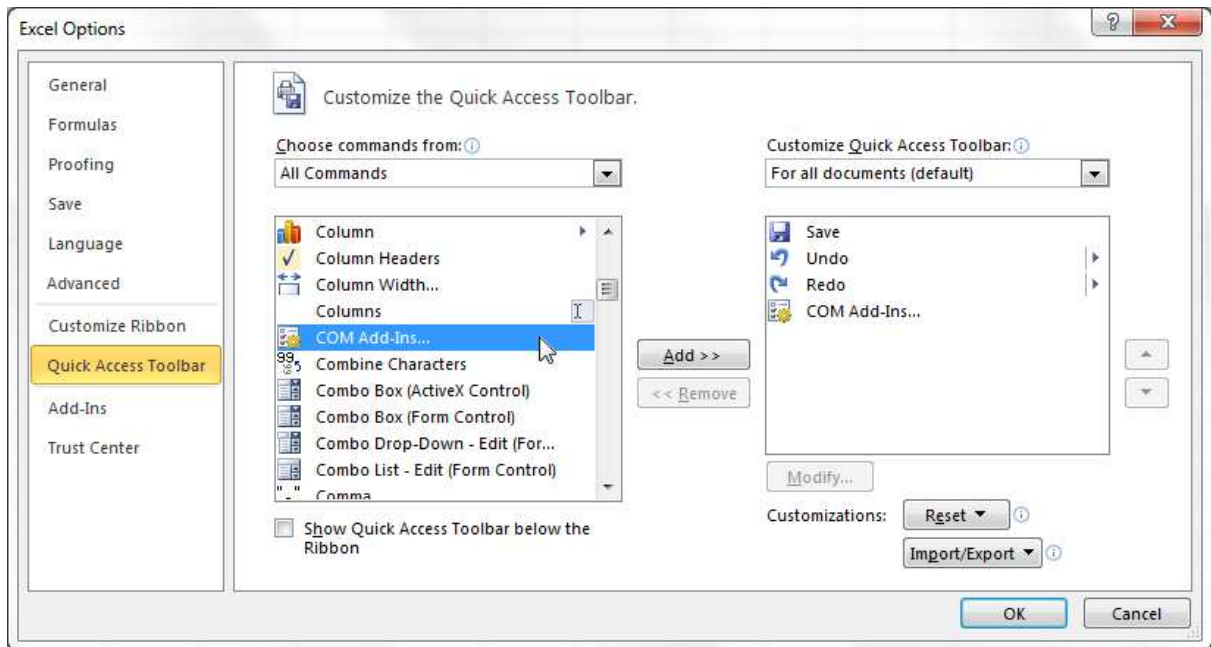
The instructions below show how to gain quick access to this dialog.

1. Click the down arrow next to the Quick Access Toolbar (QAT) and select "More Commands ...", as shown in the image below.



QAT - More Commands

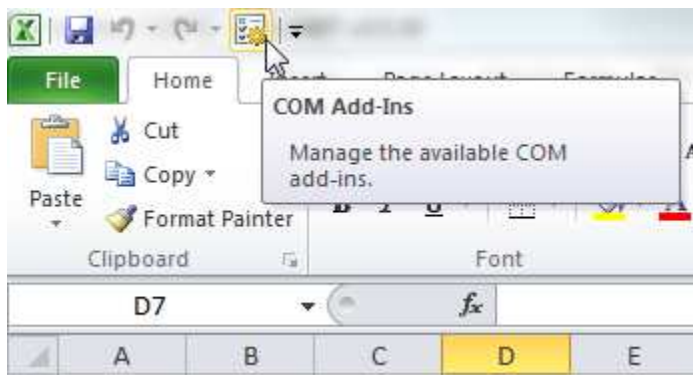
1. Under "Choose commands from" select "All Commands" from the drop down list, and then scroll down and select the "COM Add-ins" item from the list, as shown below.



Adding COM Add-ins button to QAT

2. Click the Add button, and then OK to close.

The COM Add-ins button will now appear on your Quick Access Toolbar (QAT). Clicking it will open a dialog that lets you load or unload FlowBreeze (or any other COM add-in). When you're not using FlowBreeze, unloading it will probably let Excel startup faster, so this is a handy tool.



COM Add-in Button on QAT

12.5 Uninstalling FlowBreeze

FlowBreeze Versions 3 and 4

To uninstall FlowBreeze 3 from Vista or Windows 7, 8, or 10, please follow these steps:

1. Open the Control Panel (see note below).
2. Double-click "Programs and Features".
3. Select FlowBreeze in the listings and click Uninstall from the top menu bar.

Note. In Vista and Windows 7, the Control Panel is accessible via the Windows Start menu. In Windows 8 and 10, hold down the Windows logo button and press "X" on your keyboard, then select "Programs and Features" from the popup menu.

To uninstall FlowBreeze 3 from Windows XP and 2000, please follow these steps:

1. Open the Control Panel from the Windows Start menu.
2. Double-click Add or Remove Programs.
3. Select FlowBreeze in the listings and click Remove from the top menu bar.

FlowBreeze Versions 1 and 2

To uninstall FlowBreeze 1.x or 2.x from any version of Windows, please follow these steps:

1. Click the Windows Start button.
2. Click All Programs and navigate to the FlowBreeze group.
3. Click the Uninstall option and follow the prompts.

If Version 2 Fails to Uninstall

If a permissions error occurs when uninstalling version 2, finding the root cause can be hard to troubleshoot. However, there are three workarounds that can be used.

Unregistering Versions 1 and 2 Manually

1. Close Excel if it is open.
2. Go to the Windows Start menu, navigate to Accessories, right-click on Command Prompt, and select Run as Administrator.
3. Type "cd c:\program files (x86)\flowbreeze" to go to the installation folder [omit the "(x86)" part of the path on 32-bit operating systems].
4. Type "regsvr32.exe /u flowbreeze.dll" and press enter.

Disabling Versions 1 and 2 within Excel

1. Open the Excel Options dialog.
 - Excel 2010 - 2016: Click the File tab on the Excel ribbon, and then click the "Excel Options" button in the left menu.
 - Excel 2007: Office Button in the upper left corner of Excel, and then click the "Excel Options" button on the bottom-right corner of the window.
2. In the left menu, select "Add-ins".
3. From the "Manage" dropdown list, select "COM add-ins" and click the "Go..." button.
4. If "FlowBreeze" is listed, uncheck the box. Note, version 3 of FlowBreeze is listed as FlowBreeze3. Do not uncheck that if you want FlowBreeze3 to remain running.
5. Click OK. The add-in will take up a minor amount of space on your hard drive but will be rendered non-functional.

Disabling Versions 1 and 2 in the Windows Registry

This step requires administrative privileges.

1. Close Excel if it is open.
2. In the Windows Start menu, enter "regedit" in the search bar and press enter.
3. You will be prompted with a User Account Control. Click OK.
4. Navigate to
HKEY_CURRENT_USER\Software\Microsoft\Office\Excel\Addins\FlowBreeze.dsrConnect.
5. Double-click the LoadBehavior value and change the value to 0 (zero).
6. Close the registry.

13 How to Buy

Purchasing Options

FlowBreeze is available for purchase ...

- Through the BreezeTree website (www.breezetree.com). We accept payments using most major credit cards, wire transfer, and PayPal.
- Via Purchase Order (see Purchase Orders and Quotes, below).

Purchase Orders and Quotes

BreezeTree Software accepts purchase orders for amounts of \$100 or more for customers within the United States. Please contact sales@breezetree.com if you would like to place an order via P.O. or need a formal quote. The standard terms are Net 30. The method of delivery is electronic (i.e., download).

W-9 Statements

A W-9 is available upon request. Please contact sales@breezetree.com to obtain a copy.

Index

- A -

Add Flow Line Connector 83
Add Symbols 63
Apply Default Styles 77
Apply parsing syntax 32

- B -

BMP export 65
Branch (tree) 70

- C -

Change symbol styles 113
Change symbol type 115
Clear Shading 64
Contact 128
Copy flowchart 116
Create a grid 64
Create symbol key 64
Creating custom templates 52

- D -

Decision blocks 74
Deleting symbols 96

- E -

Edit symbol text 115
Editing tips 95
Extract flowchart text 68

- F -

FAQ 129
Flow Line Prompt window 21
FlowBreeze Help Introduction 6
FlowBreeze Tools 62
Flowchart editor 69
Flowchart grid 64

Flowchart key 64
Flowchart Wizard 23
Flowchart Wizard parsing rules 27
Flowcharting Tutorial 12

- G -

GIF export 65
Grid 64
Gridlines 81
Group box 75
Group symbols 126

- H -

Hide gridlines 81
How to buy 142
Hyperlink 120

- I -

Image 65
Insert branch (tree) 70
Insert decision blocks 74
Insert group box 75
Insert label 122
Insert text box 122
Inserting symbol 99
Interactive Flowcharting 12
Introduction 12

- J -

JPG export 65

- K -

Keywords 123

- L -

Label 122
Load a template 50

- M -

Moving symbols 103

- O -

Online help 128

- P -

Parsing rules 27

Picture 65

PNG export 65

Prefixes 123

Print Flowchart 76

- R -

Re-Align Shapes 77

Regroup symbols 126

Resizing symbols 103

Rotating symbols 105

- S -

Save flowchart as picture 65

Select Shapes Tool 78

Selecting shapes 107

Settings - Decisions 58

Settings - Flow Line Connectors 60

Settings - General 56

Settings - Symbol List 55

Show gridlines 81

Snap to grid 106

Snap to shape 106

Start flowcharting window 20

Straighten Connectors 86

Support 128

Swim lane assist 109

Swim lane templates 45

Symbol dimensions 55

Symbol key 64

Symbol selection 78

Symbol Styles 80

Symbols - edit styles 55

- T -

Table of Contents 6

Template generator 45

Text-To-Flowchart Wizard 23

TIF export 65

Toggle gridlines 81

Toolbar overview 7

Transpose columns to rows 31

Troubleshooting 129

- U -

Ungroup symbols 126

Using keywords 123

Using prefixes 123

- W -

Wizard 23

Working with flow lines (connectors) 88