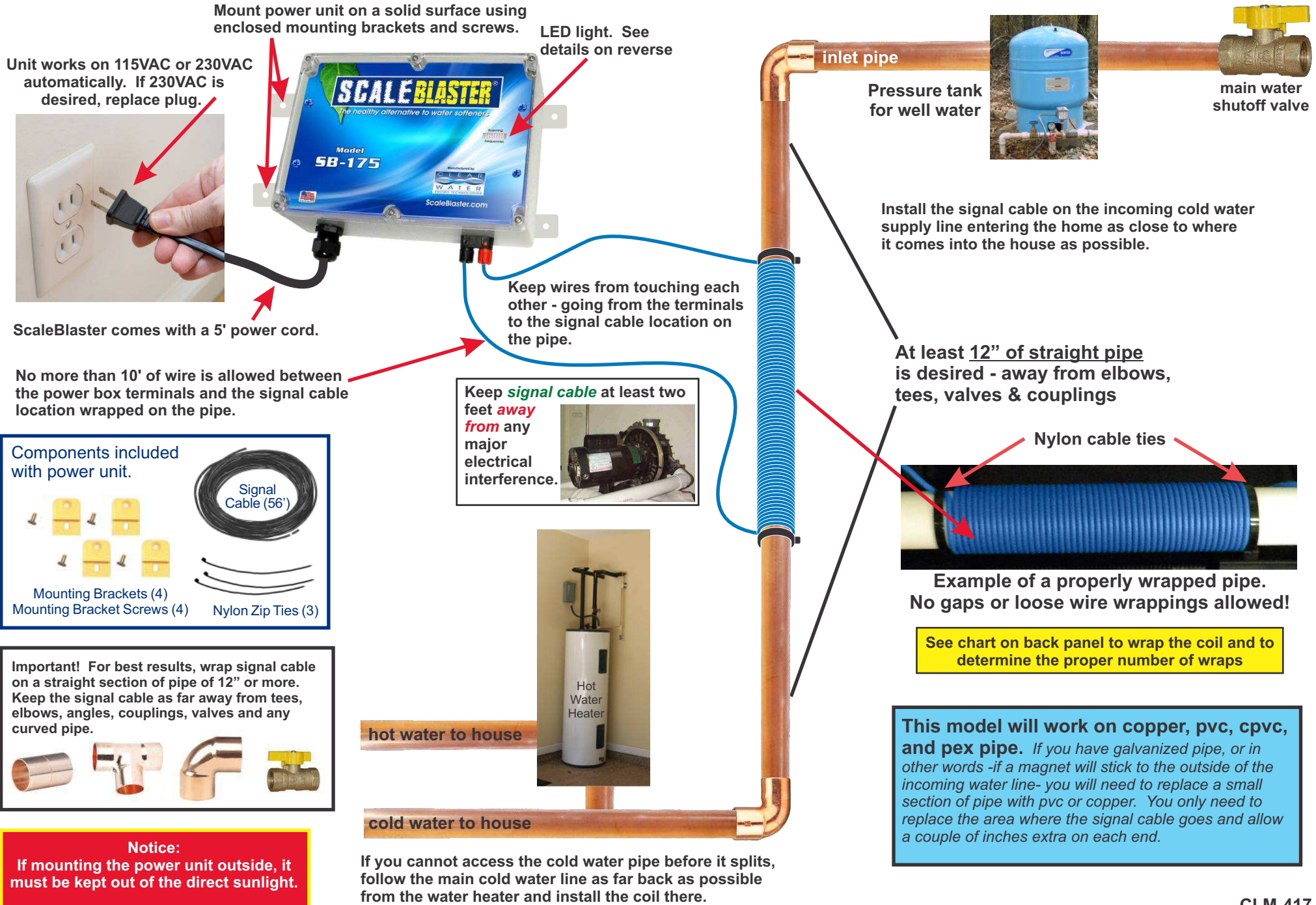


SB-150/175 Installation Quick Chart



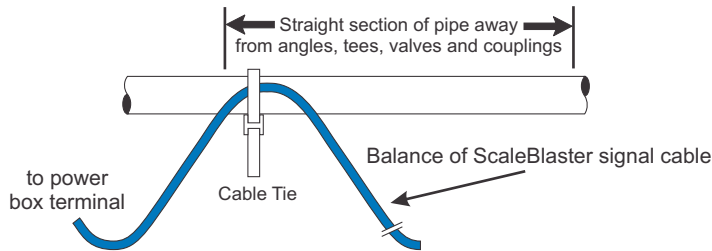
SB-150/175 Installation Quick Chart

Wrapping the pipe with the ScaleBlaster Signal Cable

PVC, CPVC, or PEX PIPE INSTRUCTIONS

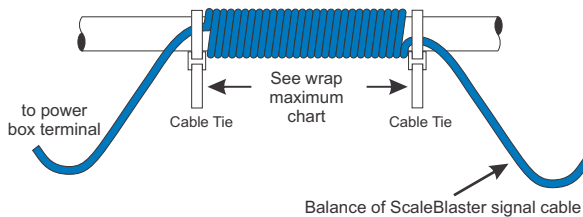
- 1.) Insert the pre-stripped end of the signal cable into one of the two signal terminals and tighten.
- 2.) Route the signal cable to the inlet pipe. Hold cable parallel and next to the pipe.
- 3.) Wrap one of the cable ties tightly so that the signal cable is secured to the pipe. **(Figure A)**

Figure A



- 4.) Wrap the loose end of the signal cable securely around the pipe - in any one direction - the proper number of turns as noted in **yellow box**
- 5.) Make sure the wraps are flush against one other, wrapped tightly and not overlapping. Continue until you reach the recommended number of wraps.
- 6.) Wrap a second cable tie at the end of the wrappings securing the signal cable tightly. **(Figure B)**

Figure B



- 7.) Route the loose end of the signal cable back to the power box. Trim excess cable to length.
- 8.) Carefully strip the outer plastic shield from the end of the signal cable leaving 1/4" to 3/8" of bare cable. Twist the bare cable and insert the end in the other terminal post on the power box and tighten the receptacle post.

Wrap Requirement PVC or PEX pipe*

SB-150

Pipe Size	Layers / Wraps
1/2"	Double 38 wraps
3/4"	Single 70 wraps
1"	Single 57 wraps
1 1/4"	Single 50 wraps

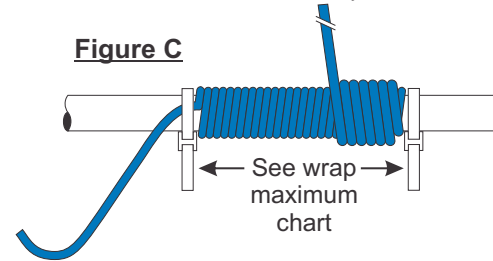
SB-175

Pipe Size	Layers / Wraps
1/2"	Double 38 wraps
3/4"	Single 70 wraps
1"	Single 57 wraps
1 1/4"	Single 50 wraps
1 1/2"	Single 40 wraps

COPPER PIPE INSTRUCTIONS

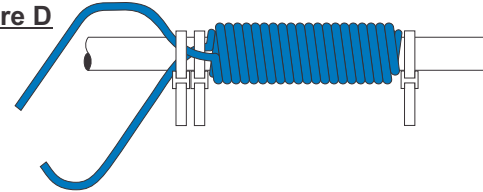
- 1.) Follow the same instructions in **steps 1-6** for PVC, CPVC and PEX pipe.
- 2.) Instead of a single coil wrapping around the pipe, a second one is added for copper pipe.
- 3.) **YOU MUST KEEP THE SECOND WRAPPING IN THE SAME DIRECTION AS THE FIRST!** Wrap right over the top of the first layer continuing in the same wrapping direction as the first layer - clockwise or counterclockwise. This second layer must also be tight and touching the prior wrap. **(Figure C)**

Figure C



- 4.) Wrap a third cable tie around the pipe and both wires. Pull the cable tie tight. **(Figure D)**

Figure D



- 5.) Follow same instructions in **steps 7-8** for PVC, CPVC and PEX pipe.

Wrap Requirement COPPER pipe*

SB-150

Pipe Size	Layers / Wraps
1/2"	Double 50 wraps
3/4"	Double 50 wraps
1"	Double 45 wraps
1 1/4"	Double 40 wraps

SB-175

Pipe Size	Layers / Wraps
1/2"	Double 50 wraps
3/4"	Double 50 wraps
1"	Double 45 wraps
1 1/4"	Double 40 wraps
1 1/2"	Double 35 wraps

ACTIVATING THE SYSTEM / LED LIGHT INDICATOR

Plug control box into electrical outlet after mounting the control box on the wall and wrapping the signal coil. The LED light on the front panel should light up. The far right light panel should stay on all the time while power is going to the ScaleBlaster box. Once the signal cable is installed, the remaining LED lights should come on and oscillate back and forth continuously.

ENJOYING THE SCALEBLASTER SYSTEM

There is no maintenance with the ScaleBlaster unit itself! No bags of salt to haul around, wasted water or batteries to change. Best of all, you are protecting the environment!

Allow up to 90 days to realize the full effects. Initial descaling may make things worse for awhile, especially in the dishwasher and aerators. This is normal! Simply clean out the screens or aerators. With dishwashers, we recommend cutting back on soap usage (unless you have been using a water softener). In July of 2010, manufacturers of dishwasher soap detergents cut back on phosphates - resulting in an increase in spotting and cloudiness. We recommend using *Cascade Action Pacs with Dawn* or *Cascade All-in-one Action Pacs* for best cleaning results. Another product that works best is *Lemi Shine*. You may also add white vinegar in the rinse cycle.

After the first 90 days, we strongly recommend you drain out your water heater. You will be amazed at what ScaleBlaster has cleaned out of your pipes!