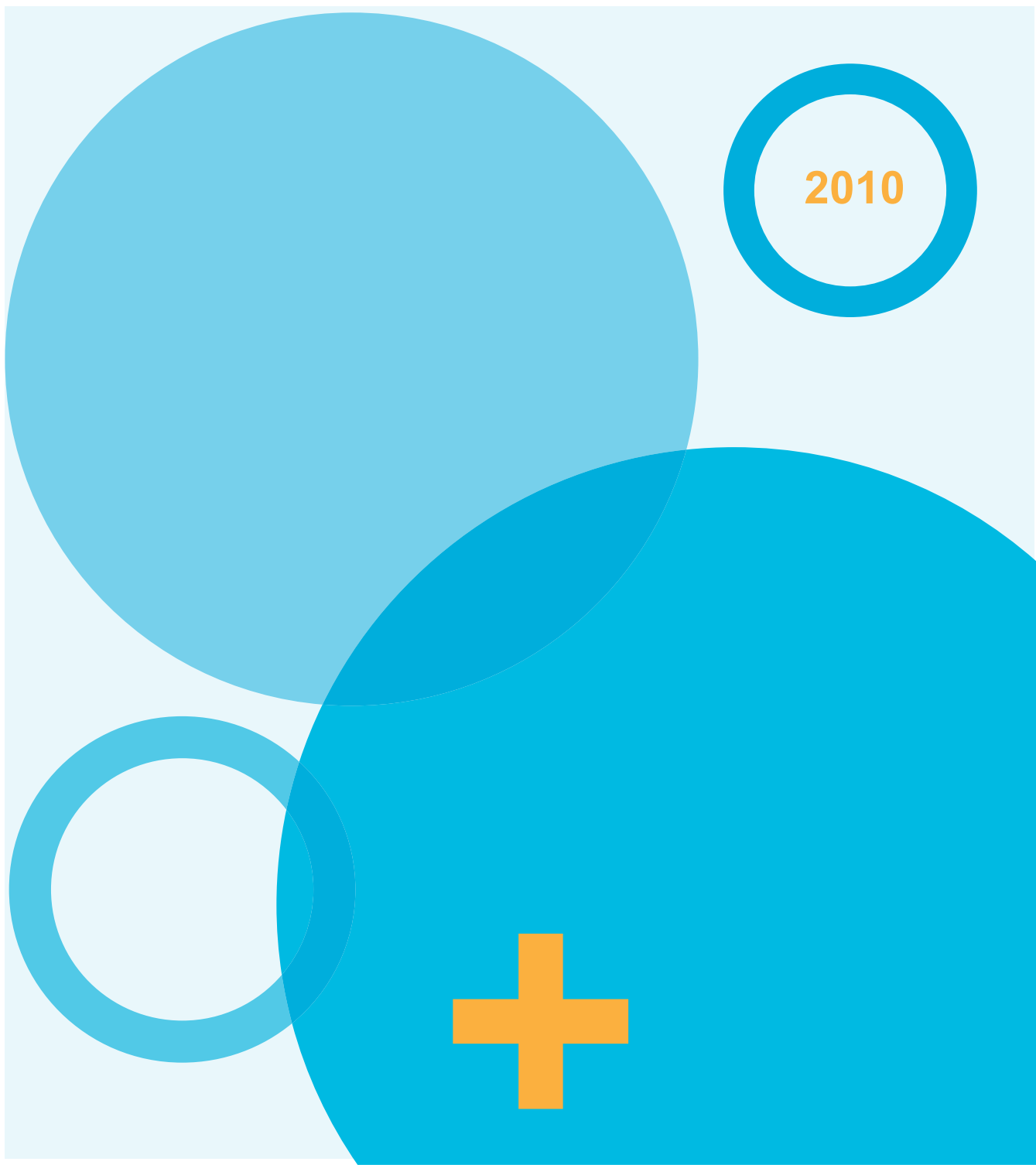


Listening to patients

Northern Devon Healthcare NHS Trust
National Maternity Survey Results



Survey results

This report sets out the core results from the 2010 Survey of Women's Experience of Maternity Care, ordered in exactly the same way as the questionnaire sent to women who have given birth.

Reading the columns of figures

The results are shown firstly in absolute numbers then as percentage responses. The first two columns show the results for the Trust from the 2007 survey (2007); the second two columns show the results for the Trust from the 2010 survey (2010); and the third two columns show the results from all the Trusts where Quality Health undertook the survey in 2010 (ALL).

The purpose of presenting the figures in this way is to give direct, at-a-glance, comparisons between the Trust's performance in 2007 and 2010; and between the Trust and other Trusts in the Quality Health database.

On some questions there are no results in the 2007 columns. This is because the question is either a new question this year or because the question has been substantially changed and is therefore not comparable with the 2007 question.

Conventions

The percentages are calculated after excluding those patients that did not answer that particular question. All percentages are rounded to the nearest whole number. When added together, the percentages for all answers to a particular question may not total 100% because of this rounding.

The 'Missing' figures show the number of patients who did not reply to that particular question. In some cases, the 'Missing' figure is quite high because it includes patients who did not answer that question or group of questions because it was not applicable to their circumstances (e.g. QB5).

On some questions there are also some figures which are italicised. These figures have been recalculated to exclude responses where the question was not applicable to the patient's circumstances. For example, questions such as B13 about seeing the same midwife every time for antenatal check-ups, where those not answering (Missing) and those saying they did not see a midwife or they only saw a midwife once are excluded.

Changes made to the data

There are a number of questions which are 'routed' (i.e. where patients are directed to a subsequent question depending on their answer to the lead question). Sometimes there are conflicts in the answers that patients give to these questions and the data is corrected to account for this. For example, if option 1 in question B10 is ticked and the patient goes on to answer question B11 etc., then any data between question B10 and question B14 (where the patient was directed) will be deleted as the patient should not have answered these questions.

DATES AND YOUR BABY

	Total	2007	Total	2010	Total	All
A1 Did you give birth to a single baby, twins or more in your most recent pregnancy?						
A single baby	135	97%	139	98%	7469	98%
Twins	4	3%	3	2%	130	2%
Triplets quads or more	0	0%	0	0%	2	0%
Missing	0		1		59	
A3 What time was your baby born?						
Early morning (12:01am-6.00am)	0	0%	35	25%	1907	25%
Morning (6:01am-12:00 noon)	0	0%	27	19%	2026	27%
Afternoon (12:01pm-6:00pm)	0	0%	46	32%	1928	25%
Evening / Night (6:01pm-12:00 midnight)	0	0%	34	24%	1703	23%
Missing	139		1		96	
A4 Roughly how many weeks pregnant were you when your baby was born?						
Before I was 37 full weeks pregnant	0	0%	13	9%	574	8%
When I was 37 weeks pregnant or more	0	0%	129	91%	7007	92%
Missing	139		1		79	
A5 How much did your baby weigh at birth?						
Less than 2500g / 2.5kg (Less than 5 pounds 8 ounces)	0	0%	7	5%	384	5%
2500g / 2.5kg or more (5 pounds 8 ounces or more)	0	0%	135	95%	7131	94%
Don't know / Can't remember	0	0%	0	0%	42	1%
Missing	139		1		103	

ANTENATAL CARE

	Total	2007	Total	2010	Total	All
B1 Who was the first health professional you saw when you thought you were pregnant?						
GP / family doctor	87	63%	87	61%	5215	69%
Midwife	50	36%	50	35%	2004	26%
Other	2	1%	5	4%	354	5%
Missing	0		1		87	
B2 Roughly how many weeks pregnant were you when you first saw this health professional about your pregnancy care?						
Before I was 7 full weeks pregnant	0	0%	54	38%	3907	52%
When I was 7 to 12 weeks pregnant	0	0%	77	55%	3144	41%
When I was more than 12 weeks pregnant	0	0%	5	4%	379	5%
Don't know / Can't remember	0	0%	5	4%	148	2%
Missing	139		2		82	
B3 Roughly how many weeks pregnant were you when you had your 'booking' appointment (the appointment where you were given your pregnancy notes)?						
Before I was 8 full weeks pregnant	0	0%	15	11%	1227	16%
When I was 8 or 9 weeks pregnant	0	0%	71	51%	2480	33%
When I was 10 or 11 weeks pregnant	0	0%	26	19%	1559	21%
When I was 12 weeks pregnant	0	0%	10	7%	972	13%
When I was 13 or more weeks pregnant	0	0%	9	6%	705	9%
Don't know / Can't remember	0	0%	9	6%	612	8%
Missing	139		3		105	
B4 At the start of your pregnancy did you have a choice about where you could have your baby?						
Yes	105	85%	109	86%	5459	78%
No	7	6%	12	9%	1243	18%
No but this was not possible for medical reasons	16	12%	15	11%	520	7%
Don't Know / Can't remember	11	9%	6	5%	320	5%
Missing	0		1		118	
B5 Were you given a choice of having your baby at home?						
Yes	102	88%	93	92%	3493	70%
No	10	9%	4	4%	1118	22%
No but this was not possible for medical reasons	23	17%	7	6%	487	9%
Don't Know / Can't remember	4	3%	4	4%	361	7%
Missing	0		35		2201	
B6 Did you get enough information from a midwife or doctor to help you decide where to have your baby?						
Yes definitely	0	0%	75	72%	2784	58%
Yes to some extent	0	0%	25	24%	1438	30%
No	0	0%	3	3%	512	11%
No but I did not need this information	0	0%	5	5%	703	13%
Don't know / Can't remember	0	0%	1	1%	46	1%
Missing	139		34		2177	

ANTENATAL CARE		Total	2007	Total	2010	Total	All
B7 Before your baby was born, did you plan to have your baby at home?							
Yes		0	0%	20	14%	527	7%
No		0	0%	122	86%	7035	93%
Missing		139		1		98	
B8 Were you given a copy of The Pregnancy Book?							
Yes		70	65%	101	82%	4968	71%
No		29	27%	9	7%	1459	21%
No I already had one		32	23%	17	12%	565	7%
Don't Know / Can't remember		8	7%	13	11%	584	8%
Missing		0		3		84	
B9 Were you given information about the NHS Choices website?							
Yes		0	0%	31	22%	1680	22%
No		0	0%	72	51%	4222	56%
Not sure / Don't know		0	0%	39	27%	1673	22%
Missing		139		1		85	
B10 Roughly how many antenatal check-ups did you have in total?							
None		0	0%	1	1%	72	1%
1 to 6		0	0%	58	41%	2974	39%
7 to 9		0	0%	56	40%	2241	30%
10 to 14		0	0%	16	11%	1192	16%
15 or more		0	0%	4	3%	474	6%
Don't know / Can't remember		0	0%	6	4%	601	8%
Missing		139		2		106	
B11 During your pregnancy were you given a choice about where your antenatal check-ups would take place?							
Yes		35	25%	32	23%	1741	23%
No		98	71%	100	71%	5457	73%
Don't Know / Can't remember		5	4%	9	6%	312	4%
Missing		1		2		150	
B12 Which of the following health professionals did you see for your antenatal check-ups?							
a.	Midwife	0	0%	141	99%	7255	96%
	Missing	139		1		333	
b.	GP (Family doctor)	0	0%	5	4%	1329	18%
	Missing	139		137		6259	
c.	Hospital doctor	0	0%	48	34%	2955	39%
	Missing	139		94		4633	
d.	Other	0	0%	2	1%	121	2%
	Missing	139		140		7467	

ANTENATAL CARE

	Total	2007	Total	2010	Total	All
B13 If you saw a midwife for your antenatal check-ups, did you see the same one every time?						
Yes every time	32	23%	32	23%	1489	20%
Yes most of the time	63	46%	69	49%	2887	39%
No	43	31%	39	28%	2963	40%
I only saw a midwife once	0	0%	1	1%	74	1%
I did not see a midwife	0	0%	0	0%	38	1%
Don't Know / Can't remember	0	0%	0	0%	33	0%
Missing	1		2		176	
B14 Did you have a 'dating scan'? This takes place between 8-14 weeks of pregnancy.						
Yes	0	0%	133	94%	7130	94%
No	0	0%	7	5%	355	5%
Don't know / Can't remember	0	0%	2	1%	91	1%
Missing	139		1		84	
B15 Was the reason for this scan clearly explained to you?						
Yes definitely	0	0%	97	70%	5606	75%
Yes to some extent	0	0%	30	22%	1331	18%
No	0	0%	8	6%	342	5%
Don't know / Can't remember	0	0%	3	2%	149	2%
Missing	139		5		232	
B16 Did you have any screening tests (a blood test or nuchal scan) to check whether your baby might have Down's syndrome?						
Yes a blood test only	67	73%	70	71%	2711	47%
Yes a nuchal scan only	12	13%	4	4%	300	5%
Yes a nuchal scan and a blood test	11	12%	20	20%	2478	43%
No I didn't want a screening test for Down's Syndrome	44	32%	43	30%	1667	22%
No I wasn't offered any screening test for Down's syndrome	2	2%	4	4%	172	3%
Don't Know / Can't remember	0	0%	0	0%	134	2%
Missing	3		2		198	
B17 Were the reasons for having a screening test for Down's syndrome clearly explained to you?						
Yes definitely	0	0%	107	76%	5653	76%
Yes to some extent	0	0%	23	16%	1232	17%
No	0	0%	9	6%	368	5%
Don't know / Can't remember	0	0%	2	1%	164	2%
Missing	139		2		243	
B18 Did you have a scan at around 20 weeks of pregnancy? This may have been called a '20 week' scan, or an 'anomaly' scan or a 'mid-trimester' scan.						
Yes	0	0%	142	100%	7434	98%
No	0	0%	0	0%	82	1%
Don't know / Can't remember	0	0%	0	0%	61	1%
Missing	139		1		83	

ANTENATAL CARE

	Total	2007	Total	2010	Total	All
B19 Was the reason for this scan clearly explained to you?						
Yes definitely	0	0%	114	80%	5948	79%
Yes to some extent	0	0%	23	16%	1243	16%
No	0	0%	5	4%	256	3%
Don't know / Can't remember	0	0%	0	0%	95	1%
Missing	139		1		118	
B20 Roughly how many ultrasound scans did you have in total during this pregnancy?						
None	0	0%	0	0%	16	0%
One	0	0%	2	1%	115	2%
Two to Three	0	0%	84	60%	4691	62%
Four or more	0	0%	53	38%	2696	36%
Don't know / Can't remember	0	0%	2	1%	56	1%
Missing	139		2		86	
B21 During your pregnancy did you have the name and telephone number of a midwife you could contact if you were worried?						
Yes	133	97%	136	96%	7065	93%
No	4	3%	5	4%	474	6%
Don't Know / Can't remember	0	0%	1	1%	44	1%
Missing	2		1		77	
B22 If you contacted a midwife, were you given the help you needed?						
Yes always	0	0%	97	82%	4219	72%
Yes sometimes	0	0%	18	15%	1288	22%
No	0	0%	4	3%	320	5%
I did not contact a midwife	0	0%	21	15%	1735	23%
Missing	139		3		98	
B23 Thinking about your antenatal care, were you spoken to in a way you could understand?						
Yes always	117	89%	130	92%	6288	83%
Yes sometimes	15	11%	11	8%	1117	15%
No	0	0%	1	1%	136	2%
Don't know / Can't remember	0	0%	0	0%	38	1%
Missing	7		1		81	
B24 Thinking about your antenatal care, were you involved enough in decisions about your care?						
Yes always	0	0%	118	83%	5462	73%
Yes sometimes	0	0%	22	15%	1619	22%
No	0	0%	3	2%	348	5%
I did not want / need to be involved	0	0%	0	0%	56	1%
Don't know / Can't remember	0	0%	0	0%	89	1%
Missing	139		0		86	

ANTENATAL CARE**Total 2007 Total 2010 Total All****B25 Overall, how would you rate the care received during your pregnancy?**

Excellent	88	64%	88	62%	3126	41%
Very good	29	21%	39	27%	2604	34%
Good	14	10%	14	10%	1220	16%
Fair	4	3%	1	1%	468	6%
Poor	3	2%	1	1%	141	2%
Missing	1		0		101	

B26 During your pregnancy, did you attend any antenatal classes provided by the NHS?

Yes	63	88%	45	63%	2321	57%
No I was not offered any classes	9	13%	23	32%	1572	39%
No they were all booked up	0	0%	3	4%	159	4%
No I attended other antenatal classes (e.g. NCT)	1	1%	10	7%	355	5%
No I did not need to attend the classes	49	36%	50	35%	2182	29%
No I did not attend for some other reasons	16	12%	10	7%	923	12%
Missing	1		2		148	

YOUR LABOUR AND THE BIRTH OF YOUR BABY

	Total	2007	Total	2010	Total	All
C1 Roughly how long did your labour last?						
Less than 8 hours	0	0%	61	50%	3130	47%
8 hours or longer but less than 12 hours	0	0%	26	21%	1304	19%
12 hours or longer but less than 18 hours	0	0%	12	10%	950	14%
18 hours or longer	0	0%	22	18%	1328	20%
Missing	139		22		948	
C2 During your labour, were you able to move around and choose the position that made you most comfortable?						
Yes most of the time	0	0%	87	78%	3727	64%
Yes some of the time	0	0%	22	20%	1624	28%
No not at all	0	0%	2	2%	501	9%
No but it was not possible to move around	0	0%	9	8%	831	12%
Missing	139		23		977	
C3 During your labour and birth, did you use any of the following to help relieve the pain?						
a. Natural methods (e.g. breathing massage)	61	44%	68	48%	3079	40%
Missing	78		75		4581	
b. Water or a birthing pool	32	23%	42	29%	814	11%
Missing	107		101		6846	
c. TENS Machine (with pads on your back)	34	24%	36	25%	1222	16%
Missing	105		107		6438	
d. Gas and air (breathing through a mask)	101	73%	99	69%	5420	71%
Missing	38		44		2240	
e. Injection of pethidine or a similar painkiller	27	19%	25	17%	2100	27%
Missing	112		118		5560	
f. Epidural or similar (injection in your back given by an anaesthetist)	35	25%	33	23%	1965	26%
Missing	104		110		5695	
g. Other	3	2%	1	1%	125	2%
Missing	136		142		7535	
h. I did not use any pain relief	4	3%	9	6%	430	6%
Missing	135		134		7230	
C4 During your labour and birth, did you feel you got the pain relief you wanted?						
Yes definitely	86	78%	76	78%	3800	65%
Yes to some extent	20	18%	16	16%	1544	26%
No	4	4%	5	5%	449	8%
No but it was not possible to have any pain relief (e.g. there was not time)	7	6%	16	14%	539	8%
I did not want any pain relief	2	2%	3	3%	282	4%
Don't know / Can't remember	0	0%	0	0%	38	1%
Missing	20		27		1008	

YOUR LABOUR AND THE BIRTH OF YOUR BABY

	Total	2007	Total	2010	Total	All
C5 Where was your baby born?						
In hospital	115	90%	123	91%	6632	93%
In a birth centre/maternity unit separate from hospital	5	4%	0	0%	273	4%
At home	8	6%	12	9%	204	3%
Other	0	0%	0	0%	7	0%
Missing	11		8		544	
C6 Thinking about the birth of your baby, what kind of delivery did you have? (If you had twins or more than two babies this time, please fill in this question about the baby which was born first)						
A normal vaginal delivery	0	0%	90	63%	4596	61%
An assisted vaginal delivery (e.g. with forceps or ventouse suction cup)	0	0%	15	11%	1096	14%
A planned caesarean delivery	0	0%	22	15%	770	10%
An emergency caesarean delivery	0	0%	15	11%	1102	15%
Missing	139		1		96	
C7 Where did you give birth?						
On a bed	74	77%	79	76%	5137	90%
On the floor	9	9%	12	12%	239	4%
In water or in a birthing pool	11	11%	12	12%	228	4%
Other	2	2%	1	1%	127	2%
Missing	43		39		1929	
C8 What position were you in when your baby was born?						
Sitting / sitting supported by pillows	18	19%	15	14%	1031	18%
On my side	11	12%	8	8%	260	5%
Standing squatting or kneeling	21	22%	31	30%	684	12%
Lying / lying supported by pillows	24	26%	24	23%	1827	32%
Lying with legs in stirrups	18	19%	26	25%	1739	31%
Other	2	2%	1	1%	137	2%
Missing	45		38		1982	
C9 If you had an episiotomy (cut) or tear requiring stitches, how long after your baby was born were the stitches done?						
I did not have an episiotomy (cut) or a tear	24	32%	25	27%	1390	26%
I did not have stitches	13	18%	19	21%	497	9%
Within 20 minutes	20	54%	30	64%	1944	56%
20 minutes to 1 hour	12	32%	8	17%	981	28%
More than 1 hour	5	14%	6	13%	397	11%
Don't know / Can't remember	0	0%	3	6%	156	4%
Missing	65		52		2295	
C10 Did you have skin to skin contact (baby naked, directly on your chest or tummy) with your baby shortly after the birth?						
Yes	0	0%	105	87%	5741	85%
No	0	0%	16	13%	1030	15%
No but this was not possible for medical reasons	0	0%	14	10%	643	8%
I did not want skin to skin contact with my baby	0	0%	6	4%	159	2%
Missing	139		2		87	

YOUR LABOUR AND THE BIRTH OF YOUR BABY

	Total	2007	Total	2010	Total	All
C11 Had you met any of the staff who cared for you during your labour and birth before you went into labour?						
Yes	58	42%	56	40%	1925	25%
No	78	57%	84	60%	5574	73%
Don't know / Can't remember	1	1%	0	0%	103	1%
Missing	2		3		58	
C12 Did you have confidence and trust in the staff caring for you during your labour and birth?						
Yes definitely	112	82%	114	81%	5536	73%
Yes to some extent	22	16%	24	17%	1708	22%
No	2	1%	2	1%	313	4%
Don't know / Can't remember	1	1%	0	0%	35	0%
Missing	2		3		68	
C13 If you had a partner or a companion with you during your labour and delivery, were they made welcome by the staff?						
Yes definitely	0	0%	130	93%	6194	83%
Yes to some extent	0	0%	9	6%	1085	14%
No	0	0%	1	1%	170	2%
I did not have a partner or a companion with me	0	0%	1	1%	109	1%
Don't know / Can't say	0	0%	0	0%	48	1%
Missing	139		2		54	
C14 Were you (and/or your partner or a companion) left alone by midwives or doctors at a time when it worried you?						
Yes during labour	15	11%	13	9%	873	12%
Yes shortly after the birth	7	5%	9	6%	451	6%
Yes during labour and shortly after the birth	1	1%	0	0%	310	4%
No not at all	114	83%	119	84%	5852	78%
Missing	2		2		174	
C15 Thinking about your care during labour and birth, were you spoken to in a way you could understand?						
Yes always	121	89%	129	92%	6257	82%
Yes sometimes	12	9%	9	6%	1064	14%
No	3	2%	2	1%	224	3%
Don't know / Can't remember	0	0%	0	0%	54	1%
Missing	3		3		61	
C16 Thinking about your care during labour and birth, were you involved enough in decisions about your care?						
Yes always	0	0%	119	86%	5232	70%
Yes sometimes	0	0%	16	12%	1748	23%
No	0	0%	4	3%	436	6%
I did not want / need to be involved	0	0%	1	1%	91	1%
Don't know / Can't remember	0	0%	0	0%	85	1%
Missing	139		3		68	

YOUR LABOUR AND THE BIRTH OF YOUR BABY

	Total	2007	Total	2010	Total	All
C17 Overall, how would you rate the care received during your labour and birth?						
Excellent	97	70%	104	74%	4206	56%
Very good	24	17%	27	19%	2043	27%
Good	10	7%	5	4%	746	10%
Fair	3	2%	2	1%	280	4%
Poor	4	3%	2	1%	255	3%
Missing	1		3		130	

CARE IN HOSPITAL AFTER BIRTH (POSTNATAL CARE)

	Total	2007	Total	2010	Total	All
D1 How long did you stay in hospital after your baby was born?						
Up to 12 hours	0	0%	29	23%	1158	16%
More than 12 hours but less than 24 hours	0	0%	21	16%	1410	19%
1 to 2 days	0	0%	35	27%	2603	36%
3 to 4 days	0	0%	37	29%	1460	20%
5 or more days	0	0%	6	5%	675	9%
Missing	139		15		354	
D2 Looking back, do you feel that the length of your stay in hospital after the birth was:						
Too long	17	13%	14	11%	1147	16%
Too short	25	20%	13	10%	852	12%
About right	78	61%	98	77%	5121	70%
Not sure / Don't remember	8	6%	2	2%	189	3%
Missing	11		16		351	
D3 Thinking about the care you received in hospital after the birth of your baby, were you given the information or explanations you needed?						
Yes always	84	66%	78	62%	3717	51%
Yes sometimes	31	24%	37	29%	2657	36%
No	13	10%	11	9%	917	13%
Don't know / Can't remember	0	0%	0	0%	36	0%
Missing	11		17		333	
D4 Thinking about the care you received in hospital after the birth of your baby, were you treated with kindness and understanding?						
Yes always	89	70%	91	72%	4293	59%
Yes sometimes	31	24%	31	24%	2410	33%
No	7	6%	5	4%	581	8%
Don't know / Can't remember	0	0%	0	0%	25	0%
Missing	12		16		351	

FEEDING YOUR BABY

	Total	2007	Total	2010	Total	All
E1 During your pregnancy did your midwife discuss infant feeding with you?						
Yes definitely	0	0%	88	63%	4234	56%
Yes to some extent	0	0%	40	29%	2047	27%
No	0	0%	10	7%	1158	15%
Don't know / Can't remember	0	0%	2	1%	117	2%
Missing	139		3		104	
E2 In the first few days after the birth how was your baby fed?						
Breast milk (or expressed breast milk) only	97	70%	89	64%	4391	58%
Both breast and formula (bottle) milk	24	17%	30	22%	1496	20%
Formula (bottle) milk only	18	13%	20	14%	1654	22%
Not sure	0	0%	0	0%	12	0%
Missing	0		4		107	
E3 Did you ever put your baby to the breast (even if it was only once)?						
Yes	125	90%	3	15%	427	25%
No	14	10%	17	85%	1250	75%
Missing	0		123		5983	
E4 Thinking about feeding your baby (breast or bottle) did you feel that midwives and other carers gave you consistent advice?						
Yes always	63	48%	47	35%	2690	37%
Yes generally	44	33%	61	46%	3046	42%
No	24	18%	26	19%	1514	21%
Don't know	1	1%	0	0%	54	1%
I didn't want or need this	6	4%	5	4%	257	3%
Missing	1		4		99	
E5 Did you feel that midwives and other carers gave you active support and encouragement?						
Yes always	75	56%	64	47%	3250	44%
Yes generally	33	24%	60	44%	3047	41%
No	24	18%	13	9%	1056	14%
Don't know	3	2%	0	0%	44	1%
I didn't want or need this	2	1%	1	1%	158	2%
Missing	2		5		105	

CARE AT HOME AFTER THE BIRTH

	Total	2007	Total	2010	Total	All
F1 When you were at home after the birth of your baby did you have the name and telephone number of a midwife or health visitor you could contact if you were worried?						
Yes	133	96%	135	97%	7155	95%
No	5	4%	4	3%	349	5%
Don't know / Can't remember	1	1%	0	0%	51	1%
Missing	0		4		105	
F2 If you contacted a midwife or health visitor, were you given the help you needed?						
Yes always	0	0%	83	86%	3992	75%
Yes sometimes	0	0%	13	13%	1089	21%
No	0	0%	1	1%	224	4%
I did not contact a midwife or health visitor	0	0%	40	29%	2215	29%
Missing	139		6		140	
F3 Since your baby's birth have you been visited at home by a midwife?						
Yes	0	0%	138	99%	7410	98%
No I visited the midwife or saw a midwife in a clinic	0	0%	2	1%	48	1%
No I was not offered a visit	0	0%	0	0%	21	0%
No I was visiting or staying near my baby in a neonatal unit (NNU NICU SCBU)	0	0%	0	0%	71	1%
No for another reason	0	0%	0	0%	12	0%
Missing	139		3		98	
F4 How many times in total did you see a midwife after you went home?						
1 - 2	0	0%	27	20%	1778	24%
3 - 4	0	0%	70	51%	3926	53%
5 - 6	0	0%	30	22%	1215	16%
7 times or more	0	0%	11	8%	444	6%
Don't know / Can't remember	0	0%	0	0%	83	1%
Missing	139		5		214	
F5 Would you have liked to have seen a midwife...						
More often	17	12%	20	14%	1594	22%
Less often	5	4%	5	4%	290	4%
I saw a midwife as much as I wanted	117	84%	114	82%	5524	75%
Missing	0		4		252	
F6 In the six weeks after the birth of your baby did you receive help and advice from health professionals about feeding your baby?						
Yes definitely	73	61%	69	58%	3443	52%
Yes to some extent	39	33%	41	34%	2218	34%
No	7	6%	10	8%	907	14%
Did not need any	18	13%	22	15%	937	12%
Missing	2		1		155	

CARE AT HOME AFTER THE BIRTH

	Total	2007	Total	2010	Total	All
F7 In the six weeks after the birth of your baby did you receive help and advice from health professionals about your baby's health and progress?						
Yes definitely	85	73%	82	63%	4666	64%
Yes to some extent	30	26%	37	28%	2240	31%
No	2	2%	11	8%	385	5%
Did not need any	20	15%	12	8%	234	3%
Missing	2		1		135	
F8 Did you have a postnatal check-up of your own health? (Around 4-8 weeks after the birth)						
Yes	123	88%	125	88%	6655	89%
No	16	12%	17	12%	861	11%
Missing	0		1		144	
F9 Were you given enough information about your own recovery after the birth?						
Yes definitely	0	0%	62	47%	3164	43%
Yes to some extent	0	0%	46	35%	2893	39%
No	0	0%	24	18%	1258	17%
No but I did not need this information	0	0%	7	5%	155	2%
Don't know / Can't remember	0	0%	1	1%	55	1%
Missing	139		3		135	
F10 Were you given enough information about any emotional changes you might experience after the birth?						
Yes definitely	0	0%	68	52%	3112	43%
Yes to some extent	0	0%	44	33%	2620	37%
No	0	0%	19	14%	1355	19%
No but I did not need this information	0	0%	10	7%	368	5%
Don't know / Can't remember	0	0%	1	1%	69	1%
Missing	139		1		136	
F11 Were you given information or offered advice from a health professional about contraception?						
Yes	131	95%	132	94%	6789	90%
No	6	4%	8	6%	629	8%
Don't know / Can't remember	1	1%	1	1%	109	1%
Missing	1		2		133	
F12 Overall, how would you rate the care received after the birth?						
Excellent	65	47%	59	42%	2347	31%
Very good	34	25%	48	34%	2636	35%
Good	22	16%	28	20%	1569	21%
Fair	10	7%	3	2%	659	9%
Poor	7	5%	3	2%	278	4%
Missing	1		2		171	

YOU AND YOUR HOUSEHOLD

	Total	2007	Total	2010	Total	All
G1 Have you had a previous pregnancy?						
Yes	87	63%	86	61%	4231	56%
No	52	37%	56	39%	3297	44%
Missing	0		1		132	
G2 How many babies have you given birth to before this pregnancy?						
None	6	7%	4	5%	444	10%
1-2	65	75%	67	79%	3383	80%
3 or more	16	18%	14	16%	425	10%
Missing	52		58		3408	
G3 Age:						
16 - 24	18	13%	12	9%	1105	15%
25 - 34	76	56%	79	59%	4060	56%
35 - 44	40	30%	41	30%	2035	28%
45 - 54	1	1%	3	2%	40	1%
55+	0	0%	0	0%	5	0%
Missing	4		8		415	
G4 Who do you live with now?						
I live alone (with or without my baby / children)	0	0%	13	9%	567	8%
With a partner/husband/boyfriend (with or without any children)	0	0%	126	90%	6401	86%
With family members other than a partner/husband/boyfriend (e.g. parents)	0	0%	1	1%	425	6%
With friends	0	0%	0	0%	22	0%
Other	0	0%	0	0%	39	1%
Missing	139		3		206	
G5 What language do you speak most often at home?						
English	139	100%	142	99%	6557	88%
Other European language	0	0%	0	0%	325	4%
Asian Language	0	0%	1	1%	317	4%
African language	0	0%	0	0%	131	2%
Other including British Sign Language	0	0%	0	0%	99	1%
Missing	0		0		231	

YOU AND YOUR HOUSEHOLD

	Total	2007	Total	2010	Total	All
G6 Do you have any of the following long-standing conditions?						
a. Deafness or severe hearing impairment	0	0%	1	1%	48	1%
Missing	139		142		7612	
b. Blindness or partially sighted	0	0%	1	1%	22	0%
Missing	139		142		7638	
c. A long-standing physical condition	0	0%	0	0%	143	2%
Missing	139		143		7517	
d. A learning disability	0	0%	1	1%	56	1%
Missing	139		142		7604	
e. A mental health condition	0	0%	2	1%	127	2%
Missing	139		141		7533	
f. A long-standing illness such as cancer HIV diabetes chronic heart disease or epilepsy	0	0%	3	2%	143	2%
Missing	139		140		7517	
g. No I do not have a long-standing condition	0	0%	132	92%	6734	88%
Missing	139		11		926	
G7 Does this condition(s) cause you difficulty with any of the following?						
a. Everyday activities that people your age can usually do	0	0%	2	25%	144	30%
Missing	0		6		342	
b. At work in education or training	0	0%	1	13%	99	20%
Missing	0		7		387	
c. Access to building streets or vehicles	0	0%	1	13%	29	6%
Missing	0		7		457	
d. Reading or writing	0	0%	1	13%	54	11%
Missing	0		7		432	
e. People's attitudes to you because of your condition	0	0%	1	13%	56	12%
Missing	0		7		430	
f. Communicating mixing with others or socialising	0	0%	1	13%	86	18%
Missing	0		7		400	
g. Any other activity	0	0%	2	25%	63	13%
Missing	0		6		423	
h. No difficulty with any of these	0	0%	2	25%	261	54%
Missing	0		6		225	

YOU AND YOUR HOUSEHOLD**Total 2007 Total 2010 Total All****G8 To which of these ethnic groups would you say you belong?**

British	138	100%	136	97%	5729	77%
Irish	0	0%	0	0%	50	1%
Any other White background	0	0%	3	2%	580	8%
White and Black Caribbean	0	0%	0	0%	33	0%
White and Black African	0	0%	0	0%	25	0%
White and Asian	0	0%	0	0%	26	0%
Any other mixed background	0	0%	0	0%	37	0%
Indian	0	0%	0	0%	198	3%
Pakistani	0	0%	0	0%	160	2%
Bangladeshi	0	0%	0	0%	59	1%
Any other Asian background	0	0%	1	1%	96	1%
Caribbean	0	0%	0	0%	81	1%
African	0	0%	0	0%	301	4%
Any other Black background	0	0%	0	0%	12	0%
Chinese	0	0%	0	0%	56	1%
Any other ethnic group	0	0%	0	0%	39	1%
Missing	1		3		178	