

P U B L I C U T I L I T Y S Y M P O S I U M



Utility Infrastructure:

What is its current condition?

What are the solutions?

Who pays?

Wednesday,
September 23, 2009

University of Missouri
Columbia, Missouri

FRI

FINANCIAL RESEARCH INSTITUTE



Robert J. Trulaske, Sr.
College of Business
University of Missouri

EARLY
BIRD
DISCOUNT
See insert for details

2009 Panelists



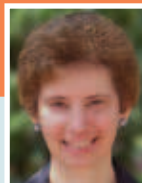
Panel 1
Commissioner
Valerie A. Lemmie



Panel 1
David Hadley



Panel 1
Stacy Hoffman



Panel 1
Dr. Lynne Holt



Panel 1
Robert G. Mork



Snapshot
Commissioner
Michael Moffet



Snapshot
Commissioner
Dana L. Murphy



Snapshot
Commissioner
Olan Reeves



Panel 2
Commissioner
James W. Gardner

Utility Infrastructure

Wednesday, September 23, 2009

Reynolds Alumni Center

University of Missouri

Registration

Welcome

8:00 am – 9:00 am

9:00 am – 9:15 am

Adequate infrastructure is vital for the safe, reliable and affordable delivery of water, gas and electric services. Yet as we assess the current state of utility infrastructure in the U.S., three issues relevant to the design of public policy emerge. The first issue concerns the present condition of utility infrastructure, its ability to support current and projected demand, and the integration of emerging technologies. The second issue involves the design of solutions for enhancing infrastructure. Solutions are likely to reflect technological innovations as well as contributions resulting from energy efficiency, demand-side management, and policy design. The third issue is infrastructure capitalization and focuses on considerations of affordability and financial feasibility, including how to finance new utility infrastructure in the presence of inflationary pressure on key inputs, rising compliance costs, and a tightening in the credit markets. Join us for a full day of discussion and debate as we consider infrastructure from the perspectives of current conditions, solutions and financing.



Dr. Stephen Ferris
Professor of Finance,
James Harvey Rogers
Chair of Money,
Credit and Banking;
Director, FRI
Robert J. Trulasko, Sr.
College of Business
University of Missouri



Dr. Bruce Walker
Lansford Professor of
Leadership and Dean
Robert J. Trulasko, Sr.
College of Business
University of Missouri



Charles Harder
Director, Regulatory Policy
and External Relations,
CenterPoint Energy;
2010 Chair,
FRI Advisory Board

Morning Address

9:15 am – 9:45 am

Infrastructure: A Washington Perspective

John Norris

Chief of Staff, United States Department of Agriculture



Norris is former chairman of the Iowa Utilities Board and was appointed Chief of Staff for the USDA by U.S. Agriculture Secretary Tom Vilsack in January 2009. John was Chief of Staff for Vilsack during his first two years as governor of Iowa and headed a group on electric restructuring. While Chairman

of the Iowa Utilities Board, John served as president of the Organization of MISO States and was on the board of directors of the National Regulatory Research Institute and the Financial Research Institute.

1 Panel Discussion 10:00 am – 11:15 am

What Is The Current Condition of Utility Infrastructure?

PANEL 1 MODERATOR

Commissioner Larry S. Landis

Indiana Utility Regulatory Commission



This panel will provide varying views on the current state of utility infrastructure systems and their ability to support current and projected demand. Panelists will discuss infrastructure's adequacy and reliability, its present condition, and its ability to integrate developing technologies.

PANEL 1 MEMBERS

Commissioner Valerie A. Lemmie The Public Utilities Commission of Ohio

David Hadley Vice President, State Regulatory Relations,
Midwest Independent Transmission System Operator, Inc.

Stacy S. Hoffman P.E. Director Engineering, Indiana-American Water

Dr. Lynne Holt Policy Analyst, Public Utility Research Center, University of Florida

Robert G. Mork Deputy Consumer Counselor for Federal
Affairs, Indiana Office of Utility Consumer Counselor



Panel 2
Edward Johnston



Panel 2
Kimberly A. Joyce



Panel 2
Dr. Karen L. Palmer



Panel 2
Ron Zdellar



Panel 3
Commissioner
Darrell Hanson



Panel 3
Jerome A. Benkert



Panel 3
Richard Cortright



Panel 3
Paula Gant



Panel 3
John Perkins

Infrastructure Snapshots: A Midwest Perspective

11:30 am – 12:00 pm

Commissioner Michael Moffet Kansas Corporation Commission
Commissioner Dana L. Murphy Oklahoma Corporation Commission
Commissioner Olan Reeves Arkansas Public Service Commission

Lunch and Comments 12:00 pm – 1:15 pm

The Role of Utility Infrastructure in Meeting The Nation's Energy Needs



David McClanahan
President and CEO,
CenterPoint Energy

2 Panel Discussion 1:30 pm – 2:45 pm

What Are The Solutions?

PANEL 2 MODERATOR

Commissioner Sherman Elliott
Illinois Commerce Commission



Given the scope of problems facing infrastructure, panelists will discuss solutions and how they can best adapt to technological innovations, energy efficiency, and demand-side management.

PANEL 2 MEMBERS

Commissioner James W. Gardner Vice Chairman, Kentucky Public Service Commission
Edward Johnston Managing Director, Delivery Sector, Gas Technology Institute
Kimberly A. Joyce Manager, Regulatory Affairs, Aqua America
Dr. Karen L. Palmer Darius Gaskins Senior Fellow, Director, Electricity and Environment Program, Resources For The Future
Ron Zdellar Vice President, Energy Delivery-Distribution Services, AmerenUE

3 Panel Discussion 3:00 pm – 4:15 pm

Who Pays?

PANEL 3 MODERATOR

Chairman Robert M. Clayton III
Missouri Public Service Commission



This panel examines infrastructure capitalization, addresses affordability and financial feasibility, and evaluates how current economic conditions impact infrastructure projects. Panelists will discuss whether creative regulatory solutions are needed, balancing affordability with capital recovery, and the role of public policy.

PANEL 3 MEMBERS

Commissioner Darrell Hanson Iowa Utilities Board
Jerome A. (Jerry) Benkert Executive Vice President and CFO, Vectren Corporation
Richard Cortright Managing Director, Utilities and Infrastructure Ratings, Standard & Poor's
Paula Gant Vice President, Regulatory Affairs, American Gas Association
John Perkins Iowa Consumer Advocate

Closing Comments 4:15 pm – 4:30 pm



Charles Harder
Director, Regulatory Policy
and External Relations,
CenterPoint Energy
2010 Chair, FRI Advisory Board

Do you need
more information?

Contact

Amanda Black

573-882-3800

blackam@missouri.edu

www.fri.missouri.edu



FINANCIAL RESEARCH INSTITUTE



Robert J. Trulaske, Sr.
College of Business
University of Missouri

Advisory Board

Scott E. Albertson

Director
Regulatory Affairs
Vectren Corporation

John Bear

President and CEO
Midwest ISO Inc.

Michael Callan

President
Arkansas Oklahoma Gas
Corporation

Robert M. Clayton III

Chairman
Missouri Public Service
Commission

Kent Curry

Director
Regulatory Services
Indiana Michigan Power
Company

Mark C Darrell

*Senior Vice President and
General Counsel*
Laclede Gas Company

Jeff Davis

Commissioner
Missouri Public Service
Commission

Alan Decker

Director
Regulatory Services
Public Service Company
of Oklahoma

David Dittmore

Manager
Regulatory Affairs
Kansas Gas Service

Sherman J. Elliott

Commissioner
Illinois Commerce
Commission

Dr. Stephen Ferris

Director
Financial Research Institute

Bill Gipson

President and CEO
The Empire District
Electric Company

Darrell Hanson

Commissioner
Iowa Utilities Board

Charles Harder

Director
*Regulatory Policy and
External Relations*
CenterPoint Energy

Jim Jenkins

Vice President
Finance
American Water

Glenn R. Jennings

*Chairman, President
and CEO*
Delta Natural Gas
Company Inc.

Kimberly A. Joyce

Manager
Regulatory Affairs
Aqua America

Steve Kidwell

Vice President
Regulatory Affairs (Missouri)
AmerenUE

Larry S. Landis

Commissioner
Indiana Utility Regulatory
Commission

Valerie A. Lemmie

Commissioner
The Public Utilities
Commission of Ohio

Robert Lieberman

Commissioner
Illinois Commerce
Commission

Steve Loyal

Vice President
Government Affairs
Atmos Energy

Lewis Mills

Missouri Public Counsel
Missouri Office of the
Public Counsel

Michael Moffet

Commissioner
Kansas Corporation
Commission

Glenn Morgan

Treasurer
Arkansas Western Gas

Diane Munns

Vice President
*Regulatory Relations and
Energy Efficiency*
MidAmerican Energy

John R. Perkins

Consumer Advocate of Iowa

Anne Pramaggiore

Executive Vice President
*Customer Operations,
Regulatory and External
Affairs*
ComEd

Olan Reeves

Commissioner
Arkansas Public Service
Commission

Dick Rohlfs

Director
Retail Rates
Westar Energy

Tim Rush

Director
Regulatory Affairs
Kansas City Power and Light

Jim L. Stanley

President
Duke Energy Indiana

**Oklahoma Corporation
Commission**

**Do you need
more information?**

Contact
Amanda Black
573-882-3800
blackam@missouri.edu

www.fri.missouri.edu

Hurry – Limited Seating Available. Register Now!

REGISTRATION FORM

Name _____

Title _____

Company _____

Address _____

City _____ State _____ Zip _____

Telephone _____

E-mail _____

How to Register

Internet

Register online at:
www.FRI.missouri.edu

Fax

Your completed form may be faxed to:
573-884-0674

Mail

Complete the attached registration form and mail with payment to:

FRI

404 Cornell Hall
University of Missouri
Columbia, MO 65211-2600

No refunds issued after
September 12, 2009

Accommodation

BOOK EARLY! A limited number of rooms have been reserved at the Hampton Inn and Suites at a special rate. When booking mention **FRI**.

To book your reservation:

hamptoninn.hilton.com/en/hp/groups/personalized/COUUMHX-FRI-20090922/index.jhtml

Hampton Inn and Suites Columbia at the University of Missouri

1225 Fellows Place
Columbia, Missouri 65201
1-800-445-8667

Parking

Parking is available at Turner Avenue Parking Garage. A parking pass will be mailed to you in September.



Please check this box if you do not want your name, company name and E-mail address listed in the symposium attendee materials.

Registration Fees

	Early Registration	Standard
Corporate Participants	\$295	\$345
Commission, State Employees, and Academics	\$145	\$165

DISCOUNTS

- ✓ Register by July 31, 2009 to receive the early registration discount. For registrations received on or after August 1, 2009, standard registration fees apply.
- ✓ \$10 discount per person for group registration of 10 or more.

Enclosed is my check payable to **University of Missouri, FRI**

Please charge my (circle one) MasterCard VISA Discover

Cardholder Name _____

Card Number - - -

Exp. Date ____/____

Amount to Charge: \$ _____

Do you need more information?

Contact

Amanda Black
573-882-3800

blackam@missouri.edu

www.fri.missouri.edu