

Deployment Manager

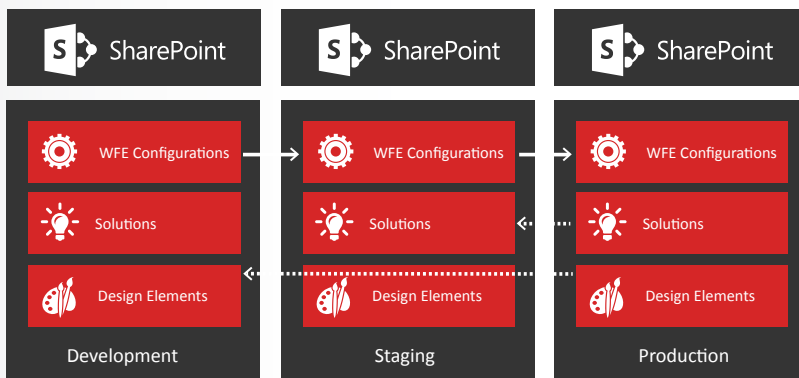


Migrate. Integrate. **Manage**. Optimize. Protect. Report.

Manage. Automate Microsoft® SharePoint® Server implementation from staging to production.

Key Benefits

- Lower operational costs and improve IT efficiency with automated change management of SharePoint artifacts, solutions, apps, and web front-end (WFE) configurations
- Ensure consistency across all pre-production and production SharePoint environments by enabling complex system propagation across farms
- Improve service levels by standardizing SharePoint implementation processes, empowering IT to improve its quality of service and responsiveness
- Reduce risk and liability by eliminating manual change management and enabling roll back for sites and site collections, resulting in faster deployment, fewer errors, and decreased possibility of breakage



Propagate WFE configurations, design elements, apps, and solutions across SharePoint environments for comprehensive application lifecycle management.

Automating Change Management for SharePoint

Effectively managing and automating change management is crucial for a successful SharePoint deployment. Lack of appropriate planning or control – as well as errors and changes during the staging process – will result in increased time-to-value, project delays, and poor application reliability. DocAve Deployment Manager automates the deployment of SharePoint artifacts, solutions, apps, and WFE configurations to minimize human error and cost overruns, accelerate service delivery, and facilitate pre-production operations for successful implementations.

Microsoft Partner

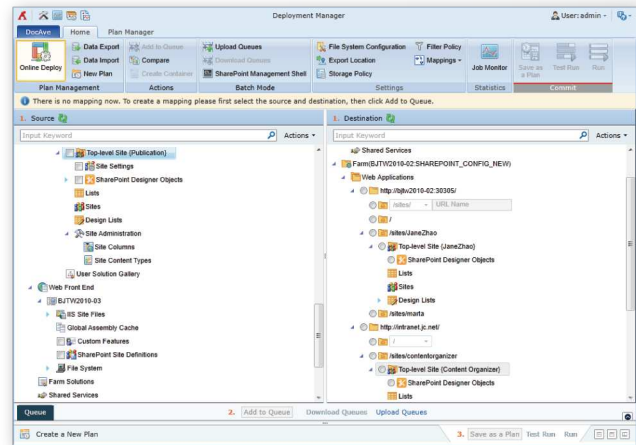
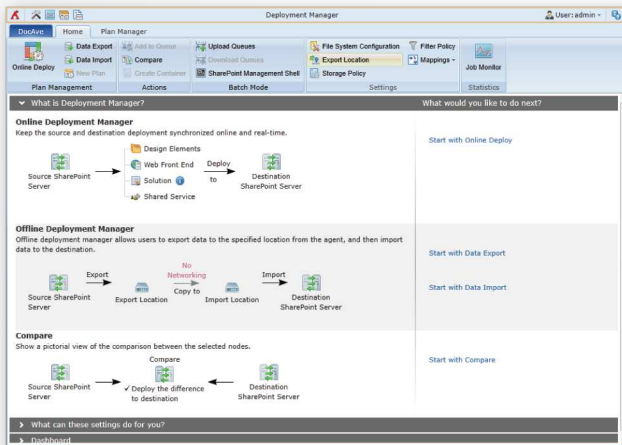
Gold Application Development
Gold Collaboration and Content

FREE
30-DAY TRIAL

www.AvePoint.com

Technical Overview

- Deploy and manage content, design elements, front-end web configurations, solutions, and shared services within or across SharePoint farms
- Minimize business disruption through plan-based online deployment with customizable scheduling options, including offline deployment to accommodate slow or secured networks
- Compare source and destination SharePoint objects to quickly view object details and identify elements for propagation as well as execute propagation tasks from one object to another (or to multiple objects)
- Granularly select SharePoint objects to deploy to other locations, including web applications, site collections, sites, lists, folders, items, apps, site or list settings, SharePoint Designer objects, site columns, content types, user or farm solutions, IIS site files, GAC, custom features, site definitions, and Managed Metadata Service
- Generate comparison reports to easily view large environments or selected scopes, in .xls/.csv/.txt formats, instead of manually comparing within the Deployment Manager user interface
- Configure restricted file types and paths to migrate eligible files or folders with security settings across file systems in WFEs
- Utilize Security Trimming to grant or deny user / user group permission to run deployment jobs
- Automatically backup the destination environment before deployment for easy rollback
- Include all associated apps, content settings (security, user profiles, and user content) as well as workflow definitions (out-of-the-box SharePoint workflows, SharePoint Designer workflows, Nintex workflows, and Visual Studio workflows) during deployment
- Utilize flexible conflict resolution to skip, merge, or overwrite content based on last modified time
- Resolve conflicts resulting from app deployment by choosing from three options – Skip, Update App Only, or Replace App and App Data
- Update permissions, metadata, or language information with comprehensive user, domain, and language mapping



Easily identify elements for propagation and roll out changes based on environment comparisons with ribbon-based controls and wizards for enhanced guidance.

As with all DocAve products, DocAve Deployment Manager utilizes only fully supported Microsoft methodologies and APIs.

How to Buy DocAve

Call: 201.793.1111
E-mail: Sales@AvePoint.com
Evaluate DocAve for free at:
www.AvePoint.com/download

AvePoint Global Headquarters
3 Second Street
Jersey City, NJ 07311
Phone: 201.793.1111 Fax: 201.217.8709



For US Government Organizations:
DocAve can be purchased directly from AvePoint or through the GSA website at www.GSAadvantage.gov.

See why you should choose AvePoint as a strategic SharePoint partner, visit www.avepoint.com/about.

Join the AvePoint community at www.AvePoint.com/community

Accessible content available upon request.