



Organization & Governance

General List of Contents

CFEOR Members

- 1.1. Member and Committee Contact list
- 1.2. UF Administrative Team Contact List

Overview of CFEOR

- 1.3. CFEOR Mission
- 1.4. History/Need for CFEOR
- 1.5. Research/Outreach Focus

Membership and Organization

- 1.6. Membership Definitions
- 1.7. Organization Structure
- 1.8. Sample letter of invitation
- 1.9. Sample MOU

All files are available to members at <http://www.sfrc.ufl.edu/CFEOR/Login/index.html> member log-in section.

1.1 Member and Committee Contact List

CFEOR Steering Committee

Bill Cleckley,

CFEOR Steering Committee Chair

Director Division of Land Management and Acquisition
Northwest Florida Water Management District
81 Water Management Drive
Havana, FL 32333-4712
850- 539-5999

Bill.Cleckley@nwfwmd.state.fl.us

Dana Bryan

Environmental Policy Coordinator
Department of Environmental Protection/
Florida Park Service
3900 Commonwealth Blvd.
Tallahassee, FL 32399
850-245-3029 ext 3511

Dana.Bryan@dep.state.fl.us

Joe Flanagan and Bob Heeke

Deputy Executive Director
Sr. Land Resources Manager
Suwannee River Water Management District
9225 County Rd 49
Live Oak, FL 32060
386-362-1001

heeke_b@srwmd.org

Jim Karels and Steve Jennings

Director and Chief, Forest Management Bureau
Florida Division of Forestry
3125 Conner Boulevard
Tallahassee, FL 32399-1650
850-488-4274

karelsj@doacs.state.fl.us

jennins@doacs.state.fl.us

Kevin Love, CFEOR Steering Committee

Regional Land Manager
Southwest Florida Water Management District
2379 Broad Street
Brooksville, FL 34609-6899
352-769-7211 ext 4465

Kevin.Love@swfwmd.state.fl.us

Susan Matthews and Teri Cleeland

Director and Deputy Forest Supervisor Region 8
National Forests in Florida, USDA Forest Service
325 John Knox Road, Suite F-100
Tallahassee, FL 32303
Phone 850-523-8549

smatthews02@fs.fed.us

tcleeland@fs.fed.us

Steve Miller

Director, Division of Land Management
St Johns River Water Management District
4049 Reid Street
P.O. Box 1429
Palatka, FL 32178-1429
386-329-4399

srmiller@sjrwmd.com

Eric Sutton

Director of Habitat and Species Conservation
Florida Fish and Wildlife Conservation Commission
620 South Meridian St
Tallahassee, FL 32399-1600
850-488-3831

Eric.Sutton@MyFWC.com

CFEOR Supporting Members

Matthew Aresco

Director
Nokuse Plantation
13292 County Highway 3280
Bruce, FL 32455
850-585-5415

aresco@nokuse.org

Richard "Dick" Brubaker

Asset manager
Gilchrist Club
3270 Southeast 4th St.
Trenton, FL 32693
352-463-2966

rmbrubaker@bankersinsurance.com

Christian Newman and Peter Colverson

Principle Ecologist and Environmental Comm. Specialist
Normandeau Associates, Inc.
102 NE 10th Ave Ste 1
Gainesville, FL 32601-2322
352-327-3270
pcolverson@pandionsystems.com

CFEOR Outreach Committee

Peter Colverson

CFEOR Outreach Committee Chair

See Supporting Member List

Bonnie Stine

CFEOR Outreach Committee Vice-Chair

Cooperative Forestry Assistance Supervisor
Florida Division of Forestry
3125 Conner Boulevard
Tallahassee, FL 32399-1650
850-488-4274
stineb@doacs.state.fl.us

Bill Cleckley

See Steering Committee List

Charlie Houser

Deputy Executive Director
Suwannee River Water Management District
9225 County Rd 49
Live Oak, FL 32060
386-362-1001
CHH@srwmd.org

Denise Rains

Public Affairs Officer, National Forests in Florida
USDA Forest Service
325 John Knox Rd, Suite F-100
Tallahassee, FL 32303
Phone 850-523-8549
drains@fs.fed.us

CFEOR Science Committee

Dana Bryan

See Steering Committee list

Cindi Gates

Sr. Land Management Specialist
Southwest Florida Water Management District
2379 Broad Street
Brooksville, FL 34609-6899
352-769-7211
cyndi.gates@watermatters.org

Dennis Hardin

Program Coordinator
Florida Plant Conservation Program
Florida Division of Forestry
3125 Conner Boulevard
Tallahassee, FL 32399-1650
850-488-4274
hardind@doacs.state.fl.us

Kent Williges

Upland Habitat and Research Monitoring
Florida Fish and Wildlife Conservation Commission
620 South Meridian St
Tallahassee, FL 32399-1600
850-488-3831

Carl Petrick

Ecosystems Staff Officer, Ocala National Forest
USDA Forest Service
cpetrick@fs.fed.us

Beau Willsey

Land Resources Manager
Suwannee River Water Management District
9225 County Rd 49
Live Oak, FL 32060
386-362-1001
willsey_b@srwmd.dstate.fl.us

1.2 UF Administrative Team Contact List

UF Administrative Team

Taylor Stein, CFEOR Director

Associate Professor, Social Science and Recreation
UF School of Forest Resources and Conservation
PO BOX 110430
Gainesville, FL 32611-0410
(352) 846-0860
tstein@ufl.edu

Nancy Peterson, CFEOR Executive Director

UF School of Forest Resources and Conservation
PO BOX 110430
Gainesville, FL 32611-0410
(352) 846-0848
njp@ufl.edu

Kimberly Bohn, CFEOR Co-Director

Assistant Professor, Forest Ecology and Silviculture
West Florida Research and Education Center 5988
Highway 90, Building 4900,
Milton, Florida 32583
(850)983-5216 ext 107
kkbohn@ufl.edu

Douglas Carter, CFEOR Co-Director

Associate Professor, Forest Economics and Management
PO Box 110410
Gainesville, FL 32611-0410
(352) 846-0893
drcart@ufl.edu

John Hayes

Professor and Chair
Wildlife Ecology and Conservation
PO BOX 110430
Gainesville, FL 32611-0430
(352) 846-0552
hayesj@ufl.edu

Leda Kobziar, CFEOR Co-Director

Assistant Professor, Fire Science and Conservation
UF School of Forest Resources and Conservation
PO BOX 110430
Gainesville, FL 32611-0430
(352) 846-0901
lkobziar@ufl.edu

Melissa Kreye, CFEOR Coordinator

UF School of Forest Resources and Conservation
PO BOX 110430
Gainesville, FL 32611-0410
(352) 846-0546
mkreye@ufl.edu

Holly Ober, CFEOR Co-Director

Assistant Professor, Wildlife and Understory Habitat
Wildlife Ecology and Conservation
UF North Florida Research & Education Center
155 Research RD
Quincy, FL 32351-5677
(850) 875-7150
holly.ober@ufl.edu

Tim White

Professor and Director
UF School of Forest Resources and Conservation
367 Newins-Ziegler Hall
P.O. Box 110410
University of Florida
Gainesville, FL 32611-0410
(352) 846-0859
tlwhite@ufl.edu

1.3 CFEOR Mission

To develop and disseminate knowledge needed to conserve and manage Florida's forests as healthy, working ecosystems that provide social, ecological and economic benefits on a sustainable basis.

Our goal is to facilitate integrative research and outreach activities with particular interest in public and family forests.

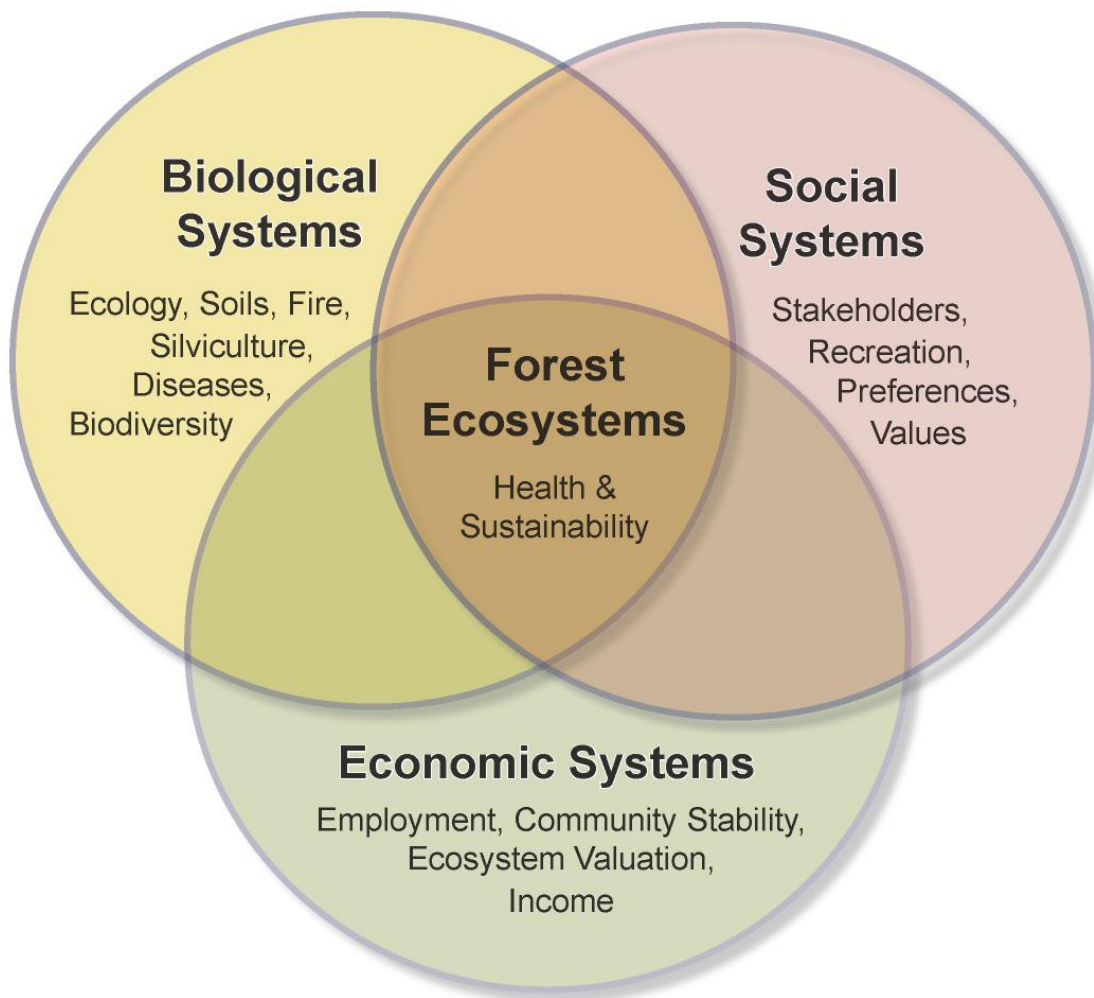


Figure 1. CFEOR diagram of integrative research

1.4 History/Need for CFEOR

CFEOR was formally initiated on October 30, 2006 in Tallahassee by Dr. Timothy White and Mr. Michael Long, who envisioned that sustainability of forests and other natural areas can be ensured more effectively through collaborative efforts among governmental (federal, state, and local) and non-governmental agencies, private industries, consultants, municipalities, land trusts, private land owners and universities.

With over nine million acres of publically owned forests and other natural areas in Florida, there is an immense need for scientifically derived management strategies to ensure sustained production of economic, social, and ecological services. In Florida, the importance of public natural areas was recognized and significant efforts were made to expand them. For example, since 1990 the state of Florida has spent billions of dollars to acquire environmentally sensitive private natural areas for conservation. In addition to state efforts, individual counties (e.g. Alachua and Sarasota counties) have land acquisition programs to conserve strategic natural areas.

While more natural areas are being brought into public domain, limited attention is being paid to their sustainable management. These unique resources, if not managed effectively, will not be able to offer ecological, economic, and social benefits at a socially desirable level. At the extreme, they could become public liabilities by increasing the risk of wildfires and invasion of pests/diseases and by offering limited economic and employment opportunities to local communities.

Family forests form another large and critical sector of Florida's forests. With approximately 400,000 different owners, accounting for nearly 4 million acres, family forests are being challenged by estate taxes, development pressures, invasive pests and the need to provide for economic viability. Research and education of land owners is urgently needed to provide information on alternative products and to quantify and establish economic value of ecosystem services to sustain these rural landscapes.

Researchers and extension specialists in cooperation with CFEOR members are conducting applied research on issues such as restoring forest ecosystems, valuing ecosystem services, assessing recreation management, promoting biodiversity, controlling invasive, exotic species, exploring market opportunities, understanding prescribed fire. Applications are being developed to further the health and sustainability of forest ecosystems.

Need for CFEOR

- Half of Florida's land base is forested with changing landownership and objectives
- Immense need for scientifically derived management strategies
- Research issues requiring multidisciplinary expertise, multi-institutional support and long-term efforts
- Communications, training and technology transfer among scientists and research professionals

1.5 Research/Outreach Focus

A team of multi-disciplinary researchers/extension specialists in cooperation with stakeholders and partners will conduct basic and applied research on the following issues and develop applications to further the health and sustainability of forest ecosystems:

- Restoring Florida forest ecosystems
- Evaluating water quality and quantity
- Valuing forest ecosystems
- Assessing visitors & recreation management strategies
- Promoting biodiversity, wildlife and fish populations
- Controlling invasive, exotic species
- Cost effective conservation planning through public-private ventures
- Exploring innovative market opportunities
- Understanding and using prescribed fire
- Enhancing threatened and endangered species

New and existing knowledge of these issues will be disseminated by:

- Hosting workshops, seminars and presenting at conferences
- Educating the public on forest ecosystem research through the Florida Cooperative Extension Service
- Developing practical applications for cooperative members and industrial and family forest landowners
- Serving as a clearing house for new information
- Enhancing communication among stakeholders
- Facilitating access to technical expertise and information

2010 Membership Categories

Steering Committee Membership

Steering Committee Membership in CFEOR shall be open to all public, private, and nongovernmental organizations and landowners that: (1) have identified conserved forests as a primary focus area; and (2) own or control (e.g., through conservation easements) more than 100,000 acres of forested land where conservation is a primary focus. Steering committee members will share in CFEOR's administrative costs and will provide a substantial monetary contribution or in-kind support on an annual basis for Signature or Supported projects as defined herein. The type and level of contribution will be contained in a memorandum of understanding between the University of Florida and each Steering Committee member. Each memorandum will be approved by the Steering Committee prior to its execution. It is expected that the annual contribution of each member shall have a total monetary value of not less than \$20,000.

Steering Committee membership allows an organization to: 1) provide leadership in the promotion of conserving forest ecosystems; and 2) participate in the selection of research and outreach projects that will benefit its operations or the furtherance of its mission. Specifically, Steering Committee membership shall include:

- Voting membership and eligibility to hold office in the steering committee,
- Voting membership and eligibility to hold office in the science and outreach committees, and
- Free or reduced cost access to CFEOR produced or sponsored training, outreach materials, and scientific information.

General Membership

General Membership in CFEOR shall be open to all public, private, and nongovernmental organizations and landowners that: (1) have identified conserved forests as an important issue in their business or agency, but conserved forests might not be a priority of management; or (2) own or control (e.g. through conservation easements) less than 100,000 acres of forested land. General Members will pay a \$4,000 per year membership fee and may choose to support research/outreach projects and provide in-kind support and contributions at their own discretion. General Members will enjoy training, outreach, and database benefits like Steering Committee Members, including participation in steering, science, and outreach committee meetings, but will not be able to vote or hold office in science or outreach committees unless formally appointed by the Steering Committee.

Supporting Membership

Supporting Membership in CFEOR is reserved for nongovernment organizations, local governments, small businesses, land trusts, small family forest landowners, and other small organizations that do not have the resources to participate at the higher levels, but do have an interest in conserved forest ecosystems. Supporting Members will pay a \$1,000 per year membership fee. Support of research/outreach projects and in-kind support and contributions will be optional. Supporting Members will enjoy all the benefits as a General Membership.

1.7 Organizational Structure

CFEOR will be housed in and administered by the School of Forest Resources and Conservation (SFRC) and the Department of Wildlife Ecology and Conservation at the University of Florida (UF). The details of the CFEOR organizational structure (Figure 1) and responsibilities of committees and individuals are as follows:

UF Administrative Team

The UF administrative team will be comprised of: (1) a CFEOR director [UF faculty member]; (2) a CFEOR executive director [School of Forest Resources and Conservation employee]; (3) CFEOR co-directors [UF faculty members with expertise consistent with the CFEOR mission such as in wildlife, ecology, human dimensions, and economics & policy. Typically, there will be four co-directors, but the number of co-directors may vary slightly, depending on the cooperative's needs]; (4) a CFEOR coordinator [funded by CFEOR]; (5) the director of the UF School of Forest Resources and Conservation; and (6) the chair of the UF Wildlife Ecology and Conservation Department. The director and executive director are responsible for managing the administrative aspects of the cooperative, including budget allocation and management. The executive director will oversee day-to-day activities of CFEOR. The co-directors are responsible for soliciting members, coordinating activities between the members and principal investigators, and assisting the director and executive director in running CFEOR. The coordinator will assist and organize select CFEOR research and outreach projects.

Executive Committee

The executive committee will be comprised of the chair and vice-chair of the CFEOR Steering Committee, the CFEOR director, the CFEOR executive director, the CFEOR coordinator, and the SFRC director. Other members of the UF administrative team will participate in executive committee meetings as required.

Steering Committee

This committee will consist of one voting representative from each steering committee member organization. The major responsibilities of this committee are to advise the executive committee on CFEOR's direction, approve the annual budget and allocation, project proposals, new policies, information dissemination, and admission of new members. Members of this committee will serve as advocates of CFEOR. The chairperson of the committee shall change every two years and shall be elected by steering committee members. The primary task of the chairperson is to guide and assist the executive committee in organizing the meetings and to preside over the steering committee meetings. The steering committee will meet bi-annually. Special meetings may be held if requested by the director or the chair of the steering committee.

Science Committee

The science committee will consist of scientists and managers from participating organizations appointed by the steering committee. Experts from outside CFEOR may be invited by the steering committee to participate. The major responsibility of this committee is to provide technical and scientific support for CFEOR. The committee will meet as needed and make recommendations to the steering committee.

Outreach Committee

The outreach committee will consist of outreach specialists and resource managers from participating organizations appointed by the steering committee. Experts from outside the CFEOR may be invited by the steering committee to participate. The major responsibility of this committee is to provide technical and outreach support for CFEOR. The Committee will meet as needed and make recommendations to the steering committee.

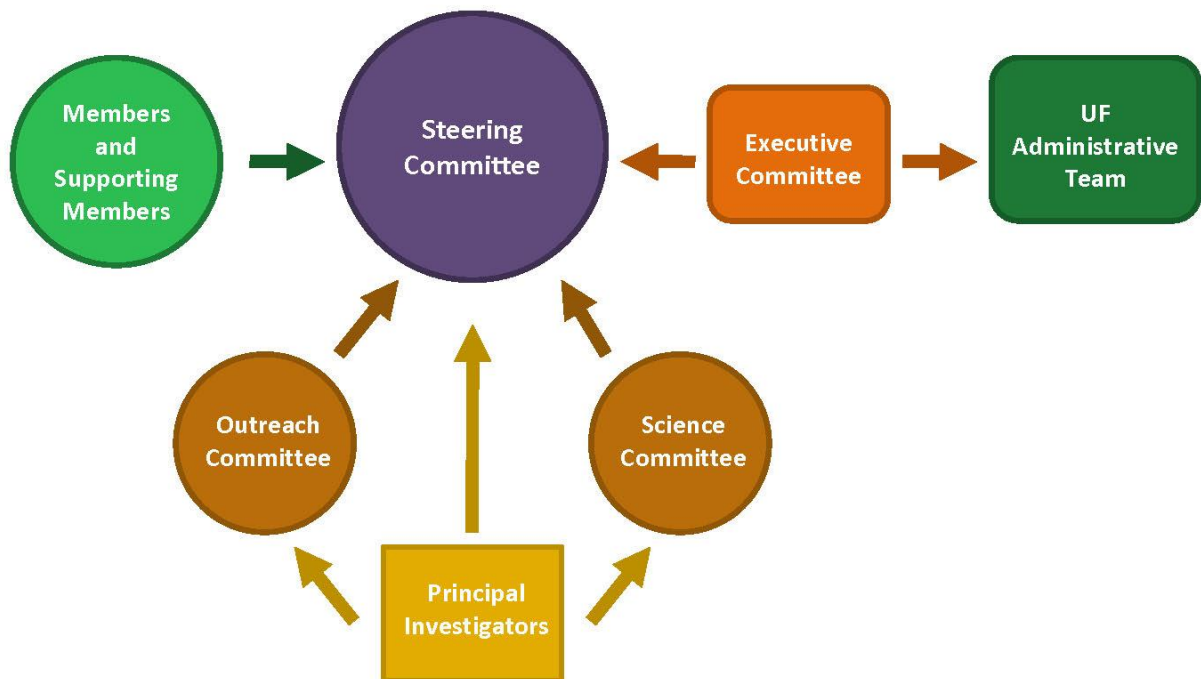
Ad-hoc Committees

The steering committee may form temporary committee/s with defined tasks. The committees will address the specific issues and make recommendations to the steering committee. The ad-hoc committees will be terminated upon the completion of tasks or at any other time by the steering committee.

Principal Investigators and Collaborators

The individual research/outreach projects undertaken by CFEOR will be supervised by a principal investigator (PI) and co-principal investigators (Co-PIs). The PI and Co-PIs could come from any UF department, other universities and member organizations. They will work with a team of multidisciplinary researchers and extension specialists from universities, member organizations, and other agencies as necessary to undertake the projects. The PI and Co-PIs are expected to coordinate their research activities with the member organizations, share their project's progress with the CFEOR membership through written reports and newsletter articles, and when possible, report their progress at CFEOR meetings.

Figure 1. Structure of CFEOR



1.8 Sample letter of Invitation

CFEOR Members

Northwest Florida Water Management District
Bill Cleckley, Steering Committee Chair

Florida Fish and Wildlife Conservation Commission
Tim Breault, Steering Committee Vice-chair

Florida Division of Forestry
Jim Karels, Steering Committee
Dennis Hardin, Science Committee Chair

Florida Park Service
Dana Bryan, Steering Committee

Gilchrist Club
Richard Brubaker, Member

Normandeau Associates, Inc.
Christian Newman, Member
Pete Colverson, Outreach Committee Chair

Southwest Florida Water Management District
Kevin Love, Steering Committee

St. Johns Water Management District
Steve Miller, Steering Committee

Suwannee River Water Management District
Bob Heeke, Steering Committee

USDA Forest Service
Teri Cleeland, Steering Committee

UF Administration

School of Forest Resources and Conservation (SFRC)

Taylor Stein, Director
Social Science and Recreation

Nancy Peterson,
Executive Director

Melissa Kreye, Coordinator

Douglas Carter, Co-Director
Forest Economics

Kimberly Bohn, Co-Director
Forest Ecology

Leda Kobziar, Co-Director
Fire Science and Conservation

Tim White, SFRC Director

Department of Wildlife Ecology and Conservation (WEC)

Holly Ober, Co-Director
Wildlife Ecology

John Hayes, WEC Chair



A Cooperative for

Conserved Forest Ecosystems: Outreach and Research

Greetings!

We invite you to learn more about the benefits of membership with the Conserved Forest Ecosystems: Outreach and Research (CFEOR) cooperative. CFEOR is a consortium of public land management agencies, the University of Florida, private companies and non-profit groups all with a common purpose; to protect and restore Florida's forested lands. Our members pool their intellectual and financial resources to promote high priority research and outreach activities needed to conserve Florida's forests as healthy, working ecosystems that provide social, ecological and economic benefits on a sustainable basis.

CFEOR is currently comprised of ten organizations that play major roles in the management of Florida's forests and our projects have earned statewide and regional recognition. Our members benefit from their connection to other resource professionals and university scientists, online access to professional journal publications, a boost to their organizations visibility, combining their limited resources with other member funds and/ or in-kind support as well as leveraging these funds with outside funding sources.

CFEOR offers several membership options and we would like to visit with you at your convenience and explain more about CFEOR. If you have any questions or would like more information, please contact Executive Director Nancy Peterson at 352-846-0848 or njp@ufl.edu.

Sincerely,

William (Bill) Cleckley
Chair, CFEOR

Enclosure: CFEOR Benefits Brochure and Executive Summary 2011.

P.O. Box 110410 Gainesville, FL 32611-0410
Phone (352) 846-0848 FAX (352) 846-1277 www.sfrc.ufl.edu/CFEOR

MEMORANDUM OF UNDERSTANDING

Between the
UNIVERSITY OF FLORIDA/SCHOOL OF FOREST RESOURCES AND CONSERVATION
INSTITUTE OF FOOD AND AGRICULTURAL SCIENCES
and
ORGANIZATION

This Memorandum of Understanding (MOU) is made and entered into by and between the University of Florida/School of Forest Resources and Conservation, hereinafter called “SFRC”, Gainesville, FL, USA and the **ORGANIZATION**, **Place**, **State**, USA, hereinafter called “ORGANIZATION”, and hereinafter jointly referred to as “THE PARTICIPANTS”.

I. PURPOSE

The purpose of this MOU is to begin a broad and multidisciplinary cooperative research, application development, and technology transfer/exchange program between THE PARTICIPANTS under the name “Cooperative for Conserved Forest Ecosystems: Outreach and Research”, hereinafter called “CFEOR” (See attached addendum titled *Structure and Administration*). This MOU provides a framework through which collaborative research and technology transfer/exchange projects of mutual interest to THE PARTICIPANTS may be coordinated. Participants in this effort, including land use planning and policy making agencies, institutions of higher education, various land management agencies at the federal, state, and local levels, and private and NGO entities involved in or interested in land management will benefit substantially from this collaboration.

II. STATEMENT OF MUTUAL INTEREST AND MUTUAL BENEFITS

Cooperative activities of interest to THE PARTICIPANTS will be undertaken under this MOU. These activities are to include:

1. Joint development of research and technology transfer/exchange priorities
2. Joint planning, funding, and implementation of research and technology transfer/exchange projects, including the project website
3. Joint exchanges of information, methodologies and publications
4. Joint exchanges of samples, materials, data and instruments

In consideration of the above premises, THE PARTICIPANTS hereto agree as follows (These may be updated or amended at any time by mutual consent of THE PARTICIPANTS)

III. SFRC SHALL:

1. Exchange information of mutual benefit
2. Encourage and facilitate cooperative research and technology transfer/exchange among THE PARTICIPANTS and other partners
3. Conduct specific research and technology transfer/exchange projects identified by the steering committee (See attached addendum titled *Structure and Administration*) or other means

IV. ORGANIZATION SHALL:

1. Exchange information of mutual benefit
2. Encourage and facilitate cooperative research and technology transfer/exchange among THE PARTICIPANTS and other partners
3. Support specific research and technology transfer/exchange projects identified by the steering committee or other means

V. IT IS MUTUALLY AGREED AND UNDERSTOOD BY AND BETWEEN THE PARTICIPANTS THAT:

1. **FUNDING OBLIGATION.** Funding obligations (See attached addendum titled *Structure and Administration*) will be mutually agreed upon by THE PARTICIPANTS
2. **PARTICIPATION IN SIMILAR ACTIVITIES.** This instrument in no way restricts THE PARTICIPANTS from participating in similar activities with other public or private agencies, organizations, and individuals.
3. **MODIFICATION.** Modifications within the scope of the instrument shall be made by mutual consent of the parties, by the issuance of a written modification, signed and dated by all parties, prior to any changes being performed.
4. **TERMINATION.** Any of the parties, in writing, may terminate the instrument in whole, or in part, at any time before the date of expiration.
5. **PRINCIPAL CONTACTS.** The principal contacts for this instrument are:

Dr. Timothy L. White
SFRC, University of Florida
Newin-Ziegler Hall
PO Box 1104110
Gainesville, FL 32611
(352) 846-0850

Name
Organization
Address
Telephone

6. COMMENCEMENT/EXPIRATION DATE. This instrument is executed as of the date of last signature and is effective through December 31, 2011, at which time it will expire unless extended.

IN WITNESS WHEREOF, THE PARTICIPANTS hereto have executed this MOU as of the last date written below.

UNIVERSITY OF FLORIDA

ORGANIZATION

By: _____
Dr. Mark R. McLellan
Director, Florida Agricultural Experiment Station
IFAS/UNIVERSITY OF FLORIDA

Date _____

By: _____
Dr. Timothy L. White
Director and Professor
SFRC/IFAS/UNIVERSITY OF FLORIDA

Date _____

By: _____
Name
Title
ORGANIZATION