



**Cold Spring Harbor Laboratory**  
*in association with*  
**The Genetical Society of Great Britain**



NO POSTAGE  
NECESSARY  
IF MAILED  
IN THE  
UNITED STATES

**BUSINESS REPLY CARD**  
FIRST CLASS PERMIT #5 COLD SPRING HARBOR, N.Y.

POSTAGE WILL BE PAID BY ADDRESSEE

COLD SPRING HARBOR LABORATORY  
P.O. Box 100  
Cold Spring Harbor, N.Y. 11724

**ATTN: Fulfillment Dept.**



NO POSTAGE  
NECESSARY  
IF MAILED  
IN THE  
UNITED STATES

**BUSINESS REPLY CARD**  
FIRST CLASS PERMIT #5 COLD SPRING HARBOR, N.Y.

POSTAGE WILL BE PAID BY ADDRESSEE

COLD SPRING HARBOR LABORATORY  
P.O. Box 100  
Cold Spring Harbor, N.Y. 11724

**ATTN: Fulfillment Dept.**



# GENES & DEVELOPMENT

- Please send me instructions for Authors  Individual price — \$90  
 Please send me a sample copy  Institutional price — \$220

Price includes postage; for airmail add \$35

Personal orders must be prepaid by personal check, credit card or money order.

Check or money order enclosed ( ) Postage \_\_\_\_\_  
(US Bank Checks Only) Total Order \_\_\_\_\_

Charge to ( ) MASTERCARD ( ) VISA ( ) AMERICAN EXPRESS

ACCOUNT NUMBER \_\_\_\_\_ EXPIRES \_\_\_\_\_

SIGNATURE \_\_\_\_\_

NAME \_\_\_\_\_

ADDRESS \_\_\_\_\_

CITY / STATE / ZIP \_\_\_\_\_

ISSN-0890-9369

TEL. Continental U.S. except N.Y. State 1-800-843-4388  
All other locations (516) 367-8325 SAN 203-6185

All prices subject to change without notice. Journal subscription covers calendar year.  
Orders for India: Panima Educational Book Agency, C-8, Safdarjang Development Area,  
Shopping Centre, Hauz Khas, New Delhi — 110016 India.  
Orders for Japan: Maruzen Company LTD., 3-10, Nihonbashi 2-Chome, Chou-ku, Tokyo,  
103 Japan

## CHECK TITLE WHICH MOST CLOSELY DESCRIBES YOUR POSITION.

- \_\_\_ 1. PROF.
- \_\_\_ 2. ASSOC. PROF.
- \_\_\_ 3. RES. DIRECTOR
- \_\_\_ 4. LAB. DIRECTOR
- \_\_\_ 5. STAFF SCIENTIST
- \_\_\_ 6. GRAD. STUDENT
- \_\_\_ 7. RES. ASSOC.
- \_\_\_ 8. RES. SCIENTIST
- \_\_\_ 9. MED. TECH.
- \_\_\_ 10. DEPT. HEAD
- \_\_\_ 11. OTHER: \_\_\_\_\_

## CHECK YOUR EMPLOYMENT CATEGORY

- \_\_\_ 1. Hospital
- \_\_\_ 2. Private Lab
- \_\_\_ 3. Government
- \_\_\_ 4. Industrial Scientist
- \_\_\_ 5. Univ. or college
- \_\_\_ 6. Research Inst. or Found.
- \_\_\_ 7. Public Health Lab.

## CHECK YOUR PRIMARY FIELD OF INTEREST

- \_\_\_ 1. Genetics
- \_\_\_ 2. Biochemistry
- \_\_\_ 3. Cytology & Histology
- \_\_\_ 4. Plant Sciences
- \_\_\_ 5. Molecular Biology
- \_\_\_ 6. Microbiology
- \_\_\_ 7. Immunology
- \_\_\_ 8. Virology
- \_\_\_ 9. Cancer Biology

# GENES & DEVELOPMENT

Please pass this order form to your librarian so that your colleagues can see *Genes & Development* in your library.

- Please send me a sample copy  Institutional price — \$220

Price includes postage; for airmail add \$35

Personal orders must be prepaid by personal check, credit card or money order.

Check or money order enclosed ( ) Postage \_\_\_\_\_  
(US Bank Checks Only) Total Order \_\_\_\_\_

Charge to ( ) MASTERCARD ( ) VISA ( ) AMERICAN EXPRESS

ACCOUNT NUMBER \_\_\_\_\_ EXPIRES \_\_\_\_\_

SIGNATURE \_\_\_\_\_

NAME \_\_\_\_\_

ADDRESS \_\_\_\_\_

CITY / STATE / ZIP \_\_\_\_\_

ISSN-0890-9369

TEL. Continental U.S. except N.Y. State 1-800-843-4388  
All other locations (516) 367-8325 SAN 203-6185

All prices subject to change without notice. Journal subscription covers calendar year.  
Orders for India: Panima Educational Book Agency, C-8, Safdarjang Development Area,  
Shopping Centre, Hauz Khas, New Delhi — 110016 India.  
Orders for Japan: Maruzen Company LTD., 3-10, Nihonbashi 2-Chome, Chou-ku, Tokyo,  
103 Japan

## CHECK TITLE WHICH MOST CLOSELY DESCRIBES YOUR POSITION.

- \_\_\_ 1. PROF.
- \_\_\_ 2. ASSOC. PROF.
- \_\_\_ 3. RES. DIRECTOR
- \_\_\_ 4. LAB. DIRECTOR
- \_\_\_ 5. STAFF SCIENTIST
- \_\_\_ 6. GRAD. STUDENT
- \_\_\_ 7. RES. ASSOC.
- \_\_\_ 8. RES. SCIENTIST
- \_\_\_ 9. MED. TECH.
- \_\_\_ 10. DEPT. HEAD
- \_\_\_ 11. OTHER: \_\_\_\_\_

## CHECK YOUR EMPLOYMENT CATEGORY

- \_\_\_ 1. Hospital
- \_\_\_ 2. Private Lab
- \_\_\_ 3. Government
- \_\_\_ 4. Industrial Scientist
- \_\_\_ 5. Univ. or college
- \_\_\_ 6. Research Inst. or Found.
- \_\_\_ 7. Public Health Lab.

## CHECK YOUR PRIMARY FIELD OF INTEREST

- \_\_\_ 1. Genetics
- \_\_\_ 2. Biochemistry
- \_\_\_ 3. Cytology & Histology
- \_\_\_ 4. Plant Sciences
- \_\_\_ 5. Molecular Biology
- \_\_\_ 6. Microbiology
- \_\_\_ 7. Immunology
- \_\_\_ 8. Virology
- \_\_\_ 9. Cancer Biology

ORDER FORM

# Molecular Biology and Genetics

RESEARCH FROM ACADEMIC PRESS JOURNALS

## GENOMICS

International Journal of Gene Mapping and Nucleotide Sequencing Emphasizing Analyses of the Human and Other Complex Genomes

Editors-in-Chief: **Victor A. McKusick**  
*The Johns Hopkins University, Baltimore,  
Maryland*

**Frank H. Ruddle**  
*Yale University, New Haven,  
Connecticut*

Highlighting the emergence of a new area of scientific inquiry, **Genomics** is devoted to the comparative analysis of the hierarchical organization and evolution of the human and other complex genomes.

**GENOMICS . . .**

- Provides a common meeting ground for those involved in molecular biology and genetics
- Emphasizes the integration of basic and applied research in human and comparative gene mapping, molecular cloning, large-scale restriction mapping, and DNA sequencing and computational analysis
- Publishes full-length and brief research communications, timely reviews, and editorial commentary
- Promotes efficient communication with the major genetic databases

Volumes 2-3 (1988), 8 issues  
In the U.S.A. and Canada: \$160.00

ISSN 0888-7543  
All other countries: \$176.00

## DEVELOPMENTAL BIOLOGY

An International Journal

Editor-in-Chief: **Peter J. Bryant**  
*Developmental Biology Center, University of California, Irvine*

**Developmental Biology** publishes original analytical research on mechanisms of development, differentiation, growth, regeneration, and tissue repair in plants and animals at the molecular, cellular, and genetic levels.

*Published under the Auspices of the Society for Developmental Biology*

Volumes 125-130 (1988), 12 issues  
In the U.S.A. and Canada: \$924.00

ISSN 0012-1606  
All other countries: \$1070.00

For a free sample copy or for more information, please write or call:

ACADEMIC PRESS, INC.  
Journal Promotion Dept.  
1250 Sixth Avenue  
San Diego, CA 92101  
U.S.A. (619) 230-1840



Please enter my subscription for:

- Genomics**, Vols. 2-3 (1988) \$ \_\_\_\_\_
- Developmental Biology**, Vols. 125-130 (1988) \$ \_\_\_\_\_

Please send me:

- A sample copy of \_\_\_\_\_
- Privileged personal rate information. Personal subscription rates are available only on orders placed directly with the Publisher and paid for with personal funds. Checks and money orders must be drawn against a U.S. bank.

Method of payment:

- Our purchase order is enclosed.  My check is enclosed.  Credit information is given.
- Enter as a Standing Order (institutions only) hereby authorizing Academic Press to service and bill our account each calendar year until cancelled.

Please note: Payment or credit card information must accompany order. Prices include postage, handling, and air freight where applicable, and are subject to change without notice. Payment must be in U.S. currency, U.S. Bank Draft, International Money Order, or UNESCO coupons. S8091

When paying by credit card, please check one box:

- Visa/Barclaycard  American Express  
 MasterCard/Access  Diner's Club

Expiration Date (Mo/Yr): \_\_\_\_\_

Credit

card

number:

--	--	--	--	--	--	--	--	--	--	--	--	--	--	--	--	--	--	--	--	--

Signature: \_\_\_\_\_

Total Amount: \$ \_\_\_\_\_

Name: \_\_\_\_\_

Address: \_\_\_\_\_

City: \_\_\_\_\_

State: \_\_\_\_\_

Zip: \_\_\_\_\_

Country: \_\_\_\_\_

# Enter A Personal Subscription To *NATURE* – The International Weekly Journal of Science... And Save Up To 61% Off The Cover Price!

Since 1869, week after week, *NATURE* has provided a forum where ground-breaking studies are announced. From Darwin and Huxley... to Brown and Goldstein, *NATURE* has maintained the standards that have established it worldwide as the foremost science publication.

Now, *NATURE* is announcing another breakthrough – a substantial savings on all personal subscriptions.

For as little as \$1.91 a week, *NATURE* conveniently provides you with the latest scientific developments that affect and change the very course of modern science – all within the pages of *one* magazine.

A personal subscription to *NATURE* also delivers much more than research articles. In each issue, *NATURE* gives you:

***NATURE'S* News and Views Section:** brief, and often controversial, reviews of the most hotly debated areas of scientific research.

***NATURE'S* Book Review Section:** texts you should be looking at, and the Product News Section tells you what supplies you should be thinking about buying... from lasers, to laboratory software, to peptides.

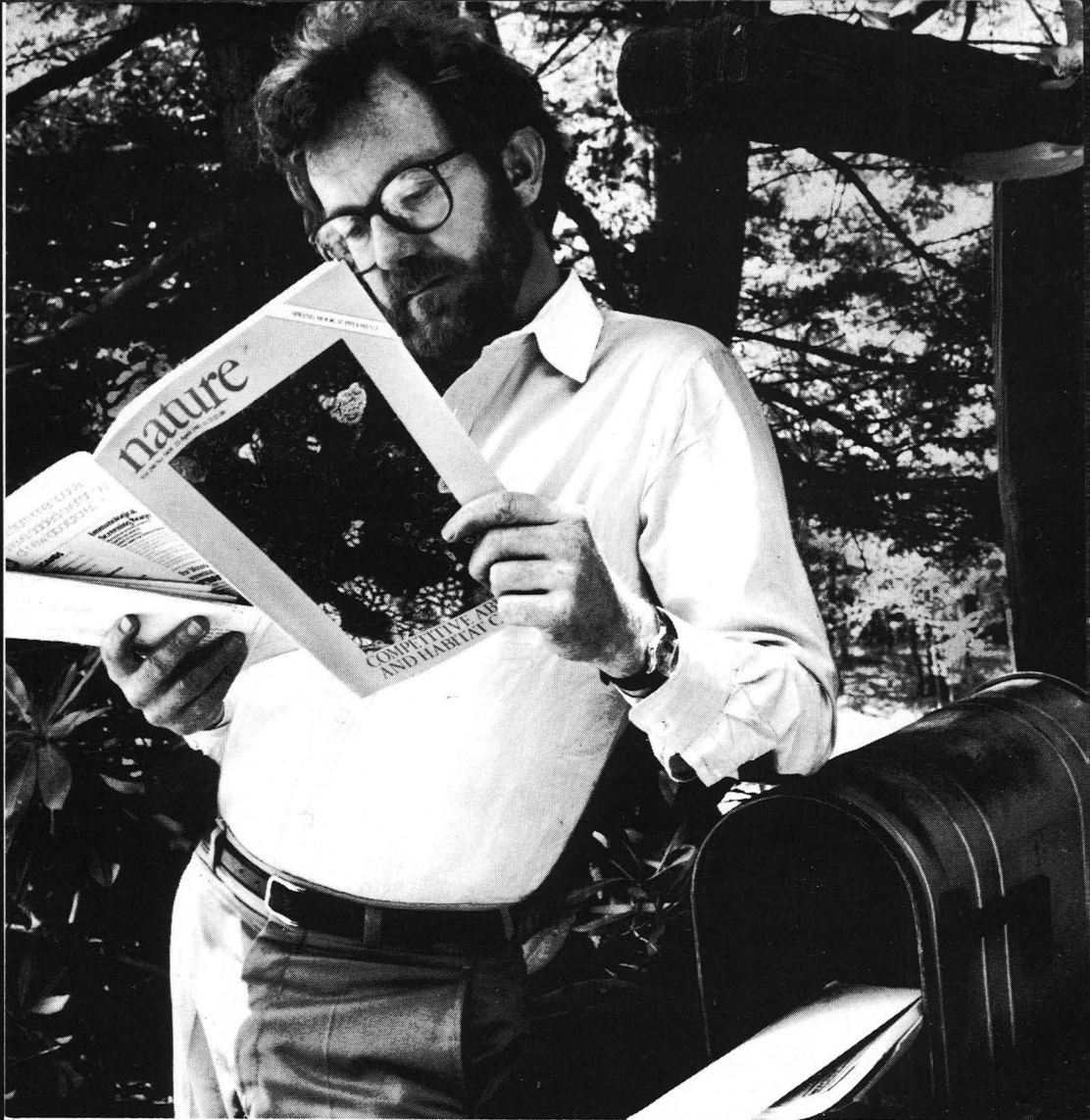
***NATURE'S* Classifieds:** looking for a new position, then you'll look at the most complete international scientific job listing published.

And that's not all... When you subscribe to *NATURE* you also get the valuable author and subject issues for easy library reference.

## Why not subscribe today?

To start your subscription, simply clip the coupon and mail it along with your payment.

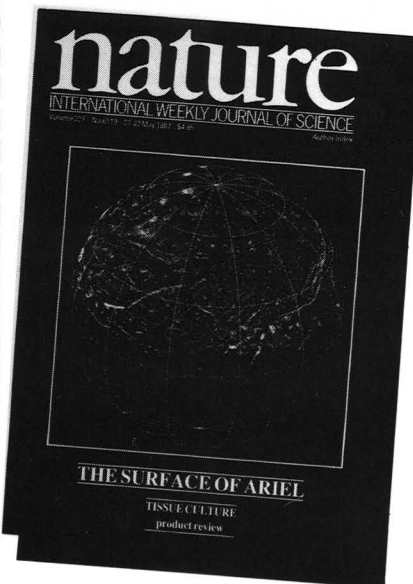
With an issue in your mailbox, week after week, you can rest assured that you'll be on top of the newest discoveries in the international scientific community.



7AGD

Mail to: *NATURE* Subscription Dept.  
P.O. Box 7663  
Teaneck, New Jersey 07666-9857

## Personal Subscription Offer



**YES!** I want to receive *NATURE* every week at the special low rate checked below – saving me as much as 61% OFF the cover price.

Two years (102 issues) only \$1.91 per copy (\$195 total price). *That's 61% OFF the cover price!*

One year (51 issues) only \$2.45 per copy (\$125 total price). *That's 50% OFF the cover price!*

40 issues... \$98.

My personal check is enclosed.

Charge my credit card.

VISA

MasterCard

AMEX

Card No: \_\_\_\_\_ Exp. Date: \_\_\_\_\_

Signature: \_\_\_\_\_

Name \_\_\_\_\_

Address \_\_\_\_\_

City \_\_\_\_\_ State \_\_\_\_\_ Zip \_\_\_\_\_

### IMPORTANT:

This special rate is available to individual subscribers in the U.S. and Canada only. Payment by personal check or credit card must accompany an individual-subscriber order. For institutional or corporate subscriptions, please remit full subscription price of \$250 for one year or \$500 for two years. BASIC ANNUAL INDIVIDUAL RATE \$125; INSTITUTIONAL/CORPORATE \$250.

# ONCOGENE

The International Journal for **Rapid Review** and **publication**  
*Oncogene* publishes detailed papers and short communications on all aspects  
of oncogene research

Speed of publication is central  
to the aims of **Oncogene**.  
Intending contributors **must**  
include their telephone  
number when submitting  
material for publication

- ★ Papers can be submitted to  
any editorial board member
- ★ Rapid review of submitted  
material
- ★ Decision on publication  
telephoned to submitting  
author
- ★ Rapid proofing – editorial  
office accept corrections by  
'phone
- ★ Printed on art paper for  
clearest presentation of  
data and colour
- ★ **No** page-changes

## Subscription Information

**Oncogene** is published in  
6 issues per volume.  
Price per volume is UK £75.00,  
Rest of the World £100.00

## Editors

**John Jenkins and Graham Currie**

Marie Curie Research Institute, The Chart, Oxted  
Surrey RH8 0TL, UK Telephone 0883 717273

**E. Premkumar Reddy**

The Wistar Institute, 36th at Spruce Street,  
Philadelphia, PA 19104, USA Telephone 215 898 3942

## Editorial Board

**Stuart A. Aaronson** USA

**Frederick Alt** USA

**Paulo Amati** Italy

**Ralph Arlinghaus** USA

**Mariano Barbacid** USA

**William Benedict** USA

**Irvin Chen** USA

**Lan Bo Chen** USA

**Peter Chumakov** USSR

**Brent Cochran** USA

**John Coffin** USA

**Tom Curran** USA

**Wolfgang Deppert** FRG

**Gordon Foulkes** UK

**Robert Franza** USA

**Judy Gasson** USA

**Elisabeth Gateff** FRG

**Mitchell Goldfarb** USA

**Douglas Hanahan** USA

**Mike Hayman** USA

**Yoji Ikawa** Japan

**Yoshiaki Ito** Japan

**Chris Marshall** UK

**Pierre May** France

**Tony Pawson** Canada

**Terry Rabbitts** UK

**Varda Rotter** Israel

**Earl Ruley** USA

**Bartholomew Sefton** USA

**Thomas Shenk** USA

**Karol Sikora** UK

**Kumao Toyoshima** Japan

**George Vande Woude** USA

**Björn Vennström** FRG

**Bernard Weinstein** USA

**Neil Wilkie** UK

**Flossie Wong-Staal** USA

**John Wyke** UK

**Mitsuaki Yoshida** Japan

## SEND FOR YOUR FREE COPY!

### Sample Copy Request Form

Please send me a sample copy of **Oncogene**

Name (BLOCK CAPS) \_\_\_\_\_

Position \_\_\_\_\_

Address \_\_\_\_\_

\_\_\_\_\_

Postal/Zip code \_\_\_\_\_

Return this form to Henry Dale

Nature Publishing Co., 65 Bleecker Street,

New York, NY 10012

Innovative cloning products from Promega—designed to keep your research on the leading edge.

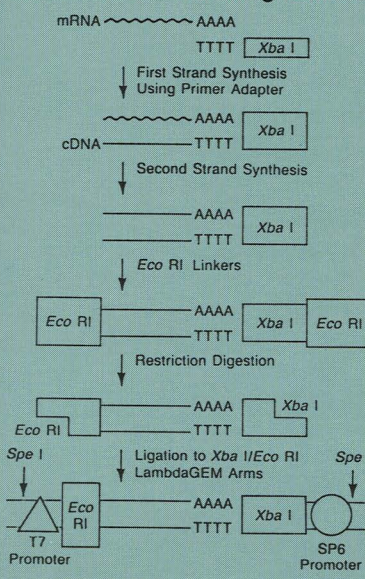
## RiboClone™ System the most versatile cDNA cloning system available.

The system is based on the vectors and method described by Palazzolo, M.J. and Meyerowitz, E.M. (1987) *Gene* **52**, 197.

- **Directional cloning strategy**—for orientation specific libraries which allow:
  - Efficient construction of subtraction libraries
  - Isolation of tissue specific cDNA's
- **SP6/T7 promoters**—flank the insert— for selective amplification of either sense or antisense cRNA sequences.
- **Lambda cloning vectors**—for high cloning efficiency and ease of screening.
- **Simplified plasmid subcloning**—for propagation and analysis of clones.
- **Complete system**—includes everything you need for:
  - cDNA synthesis
  - Linker ligation
  - Cloning with the LambdaGEM™ vectors

Many configurations are available. Please call us for ordering information.

### Directional cDNA Cloning Scheme



Promega



**800-356-9526**

Call toll-free to receive our catalogue and more information about our complete selection of molecular biological products.

**United States:** Products may be ordered from either Promega or your Fisher Scientific Branch.

**Canada:** BIO/CAN SCIENTIFIC INC., call toll-free 1-800-387-8125.

2800 S. Fish Hatchery Road  
Madison, WI 53711 U.S.A.

Toll-Free 800-356-9526

Telephone 608-274-4330

TW/X/Telex 910-286-2738

For innovation, quality and service, call USB,  
the company that introduced . . .

## SEQUENASE™, GENESCRIBE™ AND CLONED POLYNUCLEOTIDE KINASE

For scientific advances throughout a wide range of research biochemicals for molecular biology—as well as for unsurpassed quality and service in the supply of more than 6,000 general biochemicals, look to USB.

USB introduced Sequenase, the revolutionary T7 DNA Polymerase that extends the limits of sequencing.

USB's GeneScribe, the first commercially offered T7 RNA Polymerase, is the system of choice for transcription.

USB introduced the first and the purest Cloned Polynucleotide Kinase.

And USB's standards of excellence—plus the guarantees that go with them—also apply to over 6,000 general biochemicals.

For innovation, quality—and technical support—to protect the integrity of your research, turn to USB for proven product integrity in:

- Acrylamide
- AMV Reverse Transcriptase
- Cesium Chloride
- DNA Polymerase-Klenow
- DTT
- Hepes
- Nucleotides
- Restriction Enzymes
- SSB and RecA Proteins
- T4 DNA Ligase
- Terminal Deoxynucleotidyl Transferase
- Tris Enzyme Grade

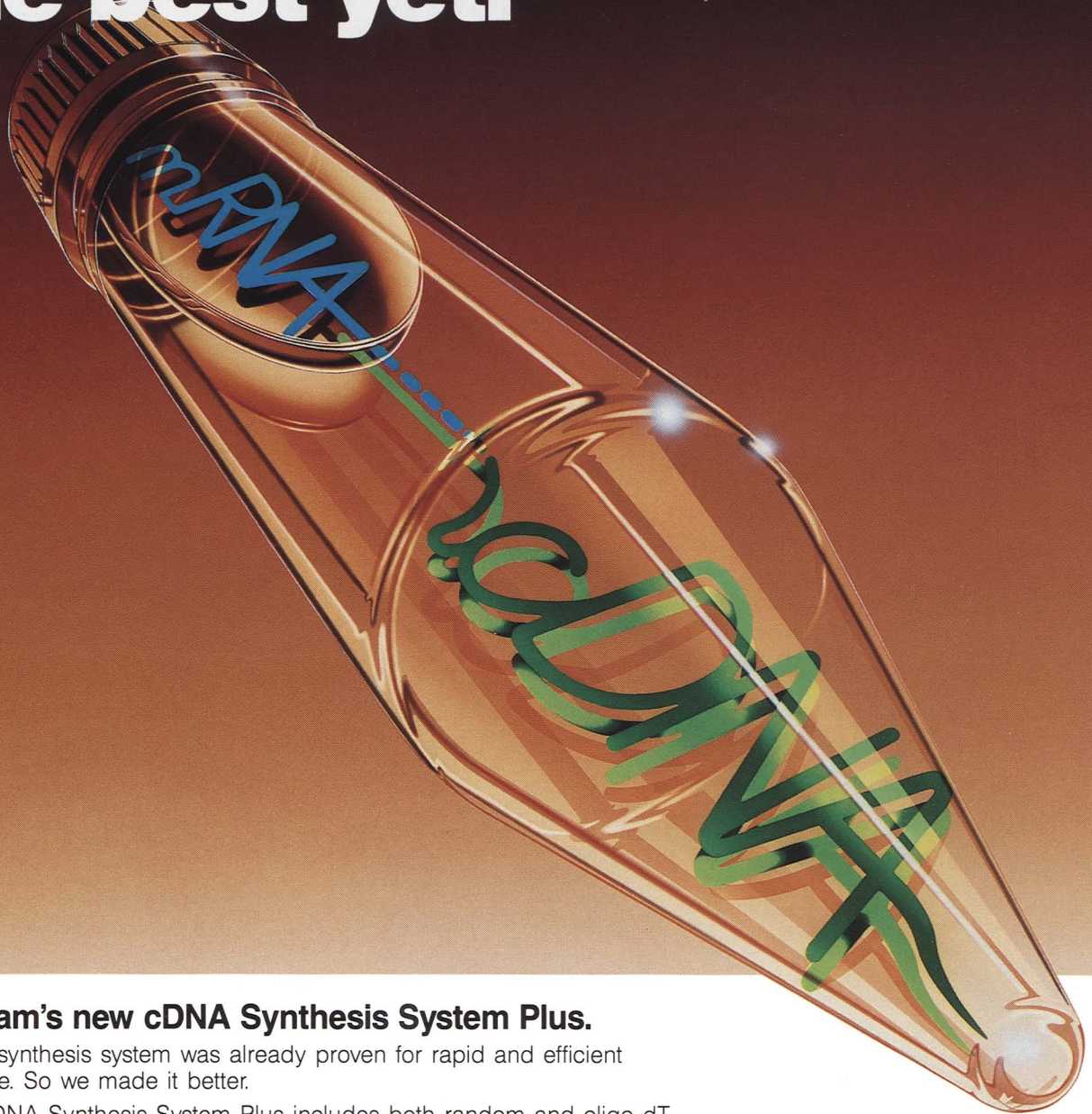
For a free copy of our *Molecular Biology Catalog*, or our *General Catalog*, write USB at P.O. Box 22400, Cleveland, Ohio, 44122. Phone 800/321-9322. From Ohio or Canada, call collect to 216/765-5000. Telex: 980718. FAX: 216/464-5075.

*\*Patent Pending*



U N I T E D S T A T E S B I O C H E M I C A L C O R P O R A T I O N

# The best yet.



## Amersham's new cDNA Synthesis System Plus.

Our cDNA synthesis system was already proven for rapid and efficient performance. So we made it better.

The new cDNA Synthesis System Plus includes both random and oligo dT primers. Random primers allow the synthesis of cDNA from both poly (A)-mRNAs and from poly (A)+ mRNAs with a high degree of secondary structure near the 3' end. And we kept the best parts of the original system:

- Copies both high- and low-abundance mRNAs at high efficiency.
- Rigorous quality control assures efficient synthesis of >7.5kb cDNA.
- Ensures a high percentage of full-length clones in the cDNA library.
- Compatible with Amersham's  $\lambda$ gt10 cloning system (RPN 1257) and our new RNA Extraction kit (RPN 1264).

### Amersham's cDNA Synthesis System Plus is available in two pack sizes:

RPN 1256Y—for 20 $\mu$ g mRNA RPN 1256Z—for 40 $\mu$ g mRNA

For more information about the new standard in cDNA synthesis, write or call us toll free.

#### Amersham Corporation

2636 South Clearbrook Drive, Arlington Heights, IL 60005  
(312) 364-7100/(800) 323-9750 • Technical assistance: (312) 593-7973/(800) 341-7543

Amersham Canada Limited 505 Iroquois Shore Road, Oakville, ONT L6H 2R3 (416) 842-2720  
Toll Free: (800) 387-4060 (Ont/Quebec)/(800) 268-5061 (rest of Canada)

Amersham is a trademark of Amersham International plc

# Amersham

*For research use only.*



# Custom DNA

in  
**48 hrs.**

Our price is only \$10 a base for the first 15 bases and just \$7.50 for each additional base. Your sequence and satisfaction are 100% guaranteed. Therefore, you get the best delivery and the best price from

## Research Genetics

2130 Memorial Parkway, S.W.

Huntsville, AL 35801

(205) 533-4363

**1-800-533-4363**

Reader Service No. 64



reach  
for the  
STARS  
with an Ad  
in

**GENES  
&  
DEVELOPMENT**

Telephone

**(516)367-8351**

# REPRODUCIBLE



## BAEKON2000 ADVANCED GENE TRANSFER SYSTEM

- Solid State Technology — not capacitor based
- Sterility — uses sterile, disposable receptacle
- Two operating modes — non-contact and contact
- Continuous output of electrical discharges
- Virtually NO limit in species, number of cells and DNA
- Controlled turning and mixing of gene/cell mixture during transfer

Published papers of Baekon2000 based research available upon request.

Our customers are leading scientists in the area of animal, plant and bacterial biotechnology, including:

Cornell University / Dartmouth Medical School / DuPont Co. / U.S. Food and Drug Administration, Division of Blood and Blood Products / Harvard Medical School / Institute of Microbiology, Beijing / Laboratory Medical Microbiology, NIH / Max-Planck-Institut F. Biochemie, Munich, West Germany / National Jewish Medical Center, Denver / National Taiwan University / Purdue University / Rockefeller University / Shanghai Institute of Plant Physiology / University of Southern California / University of Toronto / Upjohn Co. / ZMB-Heidelberg, West Germany.

Sales Representative inquiries welcome.

## **BAEKON, INC.**

18866 Allendale Avenue, Saratoga, CA 95070

Phone: 408/446-0925 or 408/741-0404

Telex: 362943

© 1987 Baekon, Inc. U.S. Patent No. 4,663,292. Canadian Patent No. 1,208,146. Patents apply to both technology and product.

Reader Service No. 65

from SEIKAGAKU AMERICA  
(SKK AMERICA)

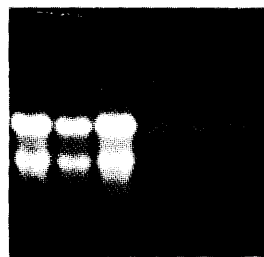
For Molecular Cloning  
**REVERSE TRANSCRIPTASE**

(Avian Myeloblastosis Virus)

Our Reverse Transcriptase is the one preferred by many researchers due to its high purity, high specific activity and absence of RNase.

**THIS PHOTO OF DENATURED RNA GEL ELECTROPHORESIS IS PROOF.**

Now denatured RNA gel electrophoresis is being employed to show the absence of contaminated RNase as a part of quality control. From the photograph (right), no degradation of RNA was found.



**Reaction:**

RNA 7.2 ug wheat germ (26S + 17S)  
Reverse Transcriptase 40 units.  
Incubated one hour at 37°C.

**Highly successful  
For making  
Full length cDNA**

- |                                    |                                      |
|------------------------------------|--------------------------------------|
| 1. Native RNA (control)            | 4. Denatured RNA (control)           |
| 2. Native RNA + RT (time 0)        | 5. Denatured RNA + RT (time 0)       |
| 3. Native RNA + RT (1 hr. at 37°C) | 6. Denatured RNA + RT (1hr. at 37°C) |

**"RESEARCH USE ONLY. NOT FOR DRUG OR OTHER USES"**

To Place An Order,  
Or For General Information,  
CALL TOLL FREE (800) 237-4512  
From anywhere in the continental U.S.  
except Florida, Hawaii and Alaska  
CALL (813) 577-9345  
From Florida, Hawaii and Alaska



**SEIKAGAKU AMERICA, INC**  
(A Subsidiary of SEIKAGAKU KOGYO CO.,LTD.)  
9049 - 4th Street North Phone: (813) 577-9345  
St. Petersburg, Florida 33702 Toll Free: (800) 237-4512  
TELEX:529422 SKK. STB. Fax: (813) 576-1870

Reader Service No. 66

**subscribe  
today**

**GENES  
&  
DEVELOPMENT**

**(516)367-8325**

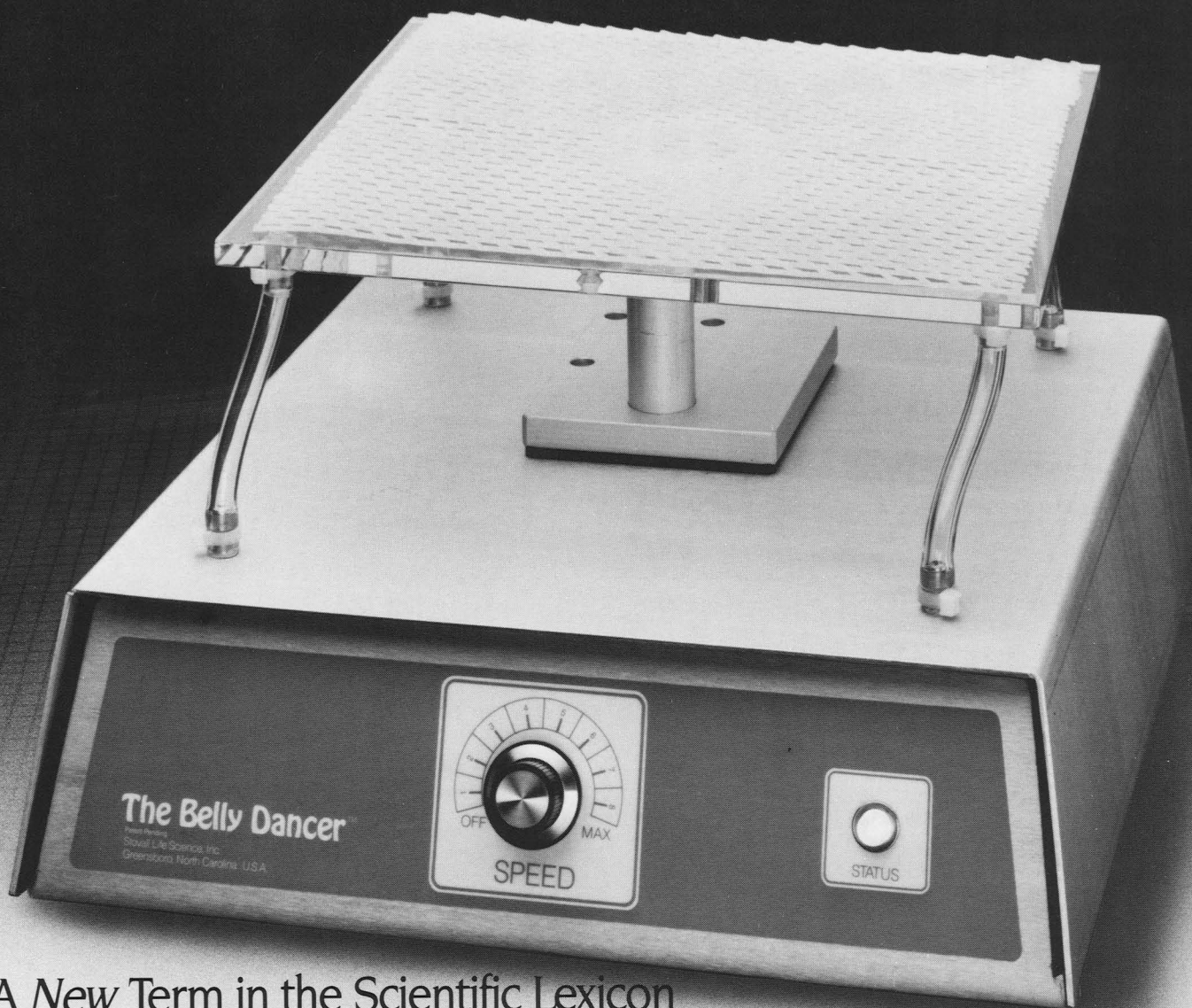
**LET US HELP YOU**

Your Mailing Label  
contains your own  
personalized  
subscription number



00350 12/88  
JANE DOE  
UNIV OF ILLINOIS  
COLL OF VET MED  
URBANA IL 61279

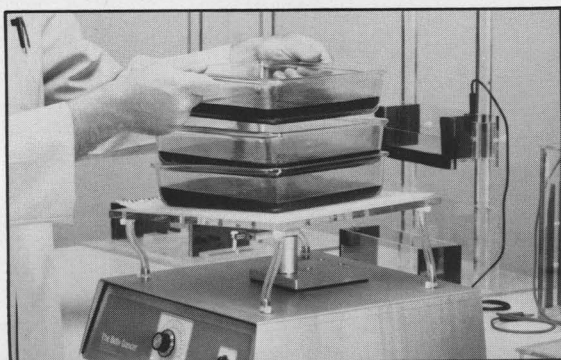
In order to save time, please quote this  
number whenever you write or speak  
to us about your subscription.



A New Term in the Scientific Lexicon

# THE BELLY DANCER™

*The Only Multi-Dimensional  
Shaker Designed Expressly For  
Gentle Yet Thorough Agitation of  
Blotting Membranes and Gels*



The unique, undulating motion of The Belly Dancer shaker provides the optimal movement for the multiple stainings and washings involved in gel and Northern, Southern and Western blotting techniques.

Sensible in design, simple in operation, durable and silent, The Belly Dancer operates on benchtops, in incubators and cold rooms.

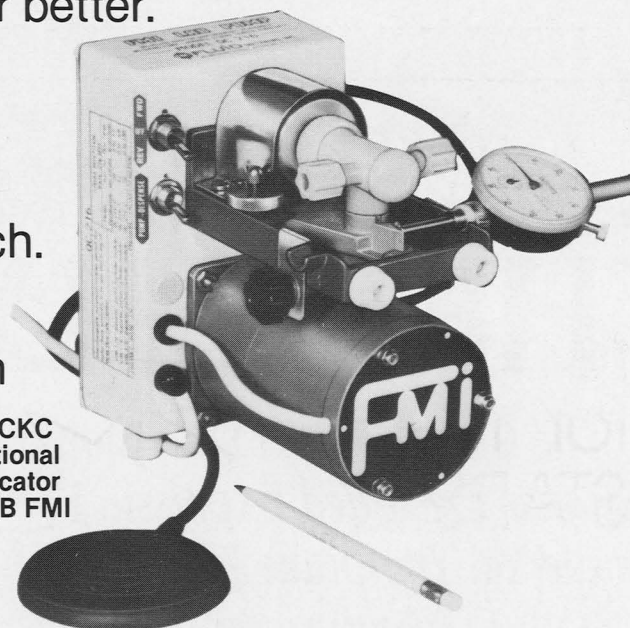
The Belly Dancer is a new term for a new concept: use it three times in a sentence and it's part of your vocabulary. Use it once in the lab and it will be part of your protocol.

Reader Service No. 62

# Precision Dispensers

FMI Models QC216 and PiP are high precision, affordable dispensers that can also be used as metering pumps.

- Model QC216 dispenses 0 to 1 ml/stroke.
- Model PiP dispenses 0 to 100 microliters/stroke.
- Pumps incorporate FMI's unique low-dead-volume valveless piston design.
- Repeat accuracy of 1% or better.
- Reversible for aspirating fluids or back-flushing system.
- Hand/foot dispense switch.
- Corrosion resistant ceramic and fluorocarbon wetted surfaces.



QC216-3CKC  
With optional  
Dial Indicator  
\$930 FOB FMI

*Available from stock  
for immediate  
shipment!*



## FLUID METERING, INC.

P.O. BOX 179, 29 ORCHARD STREET, OYSTER BAY, NY 11771  
CALL TOLL FREE 800-223-3388 • IN NY STATE 516-922-6050  
TELEX 5101001281 • FAX 516-624-8261



**Cold Spring Harbor Laboratory**  
*in association with*  
**The Genetical Society of Great Britain**



## READER SERVICE CARD

Please print the following clearly:

NAME																			
POSITION										DEPT.									
ORGANIZATION																			
ADDRESS																			
CITY										STATE					ZIP CODE				
POSTAL CODE										COUNTRY									

Offer valid for 6 mos. from issue date.

Are you a subscriber  
 YES  NO

For further information  
 WRITE assigned key  
 numbers in boxes below


For further information about advertisements and new products, write the number(s) corresponding to the number at the base of the item(s) of interest. Check your affiliation in the grid. Enter the issue date, your name and address, and return this card. Maximum 4 items per reader.

Issue date:       1988  
 Month

**GENES & DEVELOPMENT**

CHECK TITLE WHICH MOST CLOSELY DESCRIBES YOUR POSITION.

- 1. PROF.
- 2. ASSOC. PROF.
- 3. RES. DIRECTOR
- 4. LAB. DIRECTOR
- 5. STAFF SCIENTIST
- 6. GRAD. STUDENT
- 7. RES. ASSOC.
- 8. RES. SCIENTIST
- 9. MED. TECH.
- 10. DEPT. HEAD
- 11. OTHER: \_\_\_\_\_

PLEASE CHECK YOUR EMPLOYMENT CATEGORY

- 1. Hospital
- 2. Private Lab
- 3. Government
- 4. Industrial Scientist
- 5. Univ. or college
- 6. Research Inst. or Found.
- 7. Public Health Lab.

PLEASE CHECK YOUR PRIMARY FIELD OF INTEREST

- 1. Genetics
- 2. Biochemistry
- 3. Cytology & Histology
- 4. Plant Sciences
- 5. Molecular Biology
- 6. Microbiology
- 7. Immunology
- 8. Virology
- 9. Cancer Biology

## READER SERVICE CARD

Please print the following clearly:

NAME																			
POSITION										DEPT.									
ORGANIZATION																			
ADDRESS																			
CITY										STATE					ZIP CODE				
POSTAL CODE										COUNTRY									

Offer valid for 6 mos. from issue date.

Are you a subscriber  
 YES  NO

For further information  
 WRITE assigned key  
 numbers in boxes below


For further information about advertisements and new products, write the number(s) corresponding to the number at the base of the item(s) of interest. Check your affiliation in the grid. Enter the issue date, your name and address, and return this card. Maximum 4 items per reader.

Issue date:       1988  
 Month

**GENES & DEVELOPMENT**

CHECK TITLE WHICH MOST CLOSELY DESCRIBES YOUR POSITION.

- 1. PROF.
- 2. ASSOC. PROF.
- 3. RES. DIRECTOR
- 4. LAB. DIRECTOR
- 5. STAFF SCIENTIST
- 6. GRAD. STUDENT
- 7. RES. ASSOC.
- 8. RES. SCIENTIST
- 9. MED. TECH.
- 10. DEPT. HEAD
- 11. OTHER: \_\_\_\_\_

PLEASE CHECK YOUR EMPLOYMENT CATEGORY

- 1. Hospital
- 2. Private Lab
- 3. Government
- 4. Industrial Scientist
- 5. Univ. or college
- 6. Research Inst. or Found.
- 7. Public Health Lab.

PLEASE CHECK YOUR PRIMARY FIELD OF INTEREST

- 1. Genetics
- 2. Biochemistry
- 3. Cytology & Histology
- 4. Plant Sciences
- 5. Molecular Biology
- 6. Microbiology
- 7. Immunology
- 8. Virology
- 9. Cancer Biology



NO POSTAGE  
NECESSARY  
IF MAILED  
IN THE  
UNITED STATES

**BUSINESS REPLY CARD**  
FIRST CLASS PERMIT #5 COLD SPRING HARBOR, N.Y.

POSTAGE WILL BE PAID BY ADDRESSEE

COLD SPRING HARBOR LABORATORY  
**Advertising Manager**  
P.O. Box 100  
Cold Spring Harbor, N.Y. 11724

**ATTN: E. GAVEGLIA**



NO POSTAGE  
NECESSARY  
IF MAILED  
IN THE  
UNITED STATES

**BUSINESS REPLY CARD**  
FIRST CLASS PERMIT #5 COLD SPRING HARBOR, N.Y.

POSTAGE WILL BE PAID BY ADDRESSEE

COLD SPRING HARBOR LABORATORY  
**Advertising Manager**  
P.O. Box 100  
Cold Spring Harbor, N.Y. 11724

**ATTN: E. GAVEGLIA**



READER RESPONSE CARD