

SCHEDULE "C" - DESCRIPTION
Wolf Willow Cohousing Outline Specifications – March 2012

Division 2 - Site Construction

Section 02316 – Excavation

- Slab on grade construction

Section 02625 – Sub-drainage Network

- A catch basin will be required on site to capture the surface runoff from the site. The building roof drains will be connected via the internal rainwater leaders to the catch basin.

Section 02925 - Trees, Plants, and Ground Cover

- Rough grade for landscaping only – finished landscaping not included in this budget

Division 3 - Concrete

Section 03050 – Concrete

- Reinforced concrete will be designed, fabricated and installed to the following standards:
 - Reinforcing steel to CAN/CSA G30.18
 - Materials and Methods of Concrete Construction to CAN/CSA-A23.1
 - Design of Concrete Structures to CAN/CSA-A23.3

Section 03355 - Concrete Floor Finishing

- Exterior patios and walkways at grade poured concrete or pavers
- Concrete pavers on upper floor roof decks
- Units to have gypcrete topping with float finish

DIVISION 5 – Metals

Structural steel and metal deck will be designed, fabricated and installed to the following:

- Steel Structures for Buildings to CAN/CSA S16.1
- Structural Quality Steel to CAN/CSA G40.21
- Bolts to ASTM A325
- Welded Steel Construction to CSA Standard W59
- Certification of Companies for Fusion Welding of Steel Structures CSA Standard W47.1
- Sheet Steel to ASTM A653 or CAN/CSA-S136

Division 6 - Wood and Plastics

Structural timber and prefabricated open web wood trusses will be designed, fabricated and installed to the following:

- Structural Lumber CAN/CSA – 0141
- Code for the Engineering Design of Wood CAN/CSA-0861
- Glued-laminated structural work CSA Standard 0122

Section 06100 - Rough Carpentry

- 2X8 stud walls filled with fibreglass batt insulation with 3” Styrofoam under the EIFS (approximately R-44 insulation value) and 2” under the hardi-panel (to accommodate the transition detail from stucco to hardi – approximately R-40 insulation value)
- 9 foot ceiling height
- Party walls double 2” x 4” framed wall with 1” air-space and sound batt insulation, horizontal resilient channel and drywall finish both sides

SCHEDULE "C" - DESCRIPTION
Wolf Willow Cohousing Outline Specifications – March 2012

Section 06200 - Finish Carpentry

- 3 ¼" MDF baseboards throughout units and common amenity areas
- 3" MDF casing around all doorways
- Painted MDF on all window sills
- Low VOC adhesives for all carpentry and-cabinet work.

Section 06400 - Cabinet Work

- All Cabinets (kitchen and bathroom) supplied by Superior Cabinets
 - Preformed roll top plastic laminate countertops
 - No cutting board
 - Lazy susan with Richelieu hardware 6710-140 270 degree chrome wire
 - NO microwave shelf
 - sink cabinet 36" fridge space 33" range 30" dishwasher 24" (no cabinet to allow for future installation of a dishwasher)
 - appliances NOT included except a range hood is included in units 201 and 204 (Venmar 370 - stainless) and 305 (Venmar 270 – stainless)
 - UF free cabinetry
 - Include backing for upper cabinets to the ceiling
 - All lower cabinets to include drawers in place of cabinet doors
 - 60" bathroom vanity with sink next to wall as per the image below NOTE: towel ring not included (see section 15400 below).



- Unit 201 *see attached approved shop drawings at the end of this document*
 - Molasses maple cabinet, vista door style
 - Pionite Beige Linen AT301 suede finish countertop without backsplash
- Unit 204 *see attached approved shop drawings at the end of this document*
 - Natural maple cabinet, vista door style
 - Wilsonart bronzed fusion 1796-07 matte finish countertop with backsplash
- Unit 305 *see attached approved shop drawings at the end of this document*
 - Gold maple cabinet, vista door style
 - Formica 3450-58 mineral jet matte finish countertop with backsplash

SCHEDULE "C" - DESCRIPTION
Wolf Willow Cohousing Outline Specifications – March 2012

- Common House Millwork - *see attached shop drawings at the end of this document*
 - The following appliances are planned for the common kitchen:
 - Approximately 22 cubic foot refrigerator (not in current budget)
 - approximately 20 cubic foot upright freezer (donated)
 - Bosch 36" electric cook top, Sears item 223 625 065 (purchased)
 - GE Profile 30" slide-in gas range, Sears item 223 621 27830 (purchased)
 - two Broan QS1 range hoods (purchased)
 - 30" built-in electric self clean convection wall oven (to be purchased as funds are available)
 - microwave (donated by a member)
 - commercial Moyer Diebel dishwasher model 351HT (to be purchased – in budget).
 - Regular sink cabinet in the bathroom by the exercise room
 - Handicap washroom sink with countertop only and no cabinet below for universal accessibility

Division 7 - Thermal and Moisture Protection

Section 07212 – Board insulation

- 2" type 4 high compression rigid insulation required under slab for in-floor heating
- 2" type 3 plus 1" type 1 polystyrene outside of sheathing and drain screening insulation on exterior EIFS walls and 2" type 3 for hardi-panel walls

Section 07213 – Mineral Fibre Batt insulation

- Allow for sound batt insulation in all floors and party walls
- Allow for sound batt insulation in all walls and ceilings in the common amenity area

Section 07217 - Blown Insulation

- To underside of ground floor ceiling – mineral fibre
- R 40 insulation in ceilings

Section 07311 – roofing material

- 2 ply SBS roofing over units
- Torch down membrane on all roof decks with drainage layer and concrete pavers

Section 07469 – Exterior finish

- EIFS acrylic stucco system, board insulation as above with approved drain screen system combined with hardi-panel
- Aluminum Vented Soffits at all roof overhangs
- Enclosed walkway ceilings to be exterior grade drywall with light textured spray finish
- Enclosed walkway walls to be painted drywall on the upper portion of the wall with hardi-panel on the lower portion
- Fascia boards to be prefinished aluminum
- Exterior prefinished aluminum picket railings on all balconies and common walkways
- Enclosed walkway flooring Marmoleum: walkway is NOT being treated as an exterior surface with a waterproof membrane and slopes to drains. Some floor drains will be provided so the floor can be mopped and surface water swept down, but doors will need to be closed during heavy rain.

SCHEDULE "C" - DESCRIPTION
Wolf Willow Cohousing Outline Specifications – March 2012

Section 07715 - Gutters and Downspouts

- Internal gutters and rainwater leaders connected to storm water system

Division 8 - Doors and Windows

Section 08112 - Doors

- Commercial steel doors to all service locations
- All other exterior doors insulated fibreglass with vinyl covered wood frame
- Patio and balcony doors with full light glass, unit entry doors half light glass

Section 08265 – Interior & Closet Doors

- Masonite Anniversary Collection Panel Plank Saddlebrook with matching bi-folds on closets

Section 08550 – Vinyl Windows

- White vinyl Windows Allweather 2500 series on units and common house
- Awning and casement operable windows with roto gear
- Screen on all operable windows.
- Unit and common house windows triple-glazed, Low E coating with insulated spacer. Enclosed walkways double-glazed.
- Allweather 7000 series sliding glass doors at 12" above floor level on exterior walkways
- Interior window over the sinks in common house and unit kitchens to be solid glass (not opening).

Section 08710 – Door Hardware

- Solid brass construction lever handles for all doors.

Division 9 - Finishes

Section 09260 - Gypsum Board Assemblies

- The interior walls (including window returns) smooth finish - painted
- Ceiling finish spandex/textured ceiling - a towelled plaster
- Paperless water resistant drywall to be used around all tub/shower locations.
- All floors between units to have resilient furring channel

Section 09312 - Ceramic Tile Wall Finish

- None

Section 09682 – Flooring common amenity areas

- Forbo marmoleum in all common areas except as follows:
 - Porcelain tile in the laundry room, elevator and entrance lobby
 - Sealed concrete in the workshop, sauna, electrical and mechanical rooms

SCHEDULE "C" - DESCRIPTION

Wolf Willow Cohousing Outline Specifications – March 2012

Section 09682 – Flooring common amenity areas

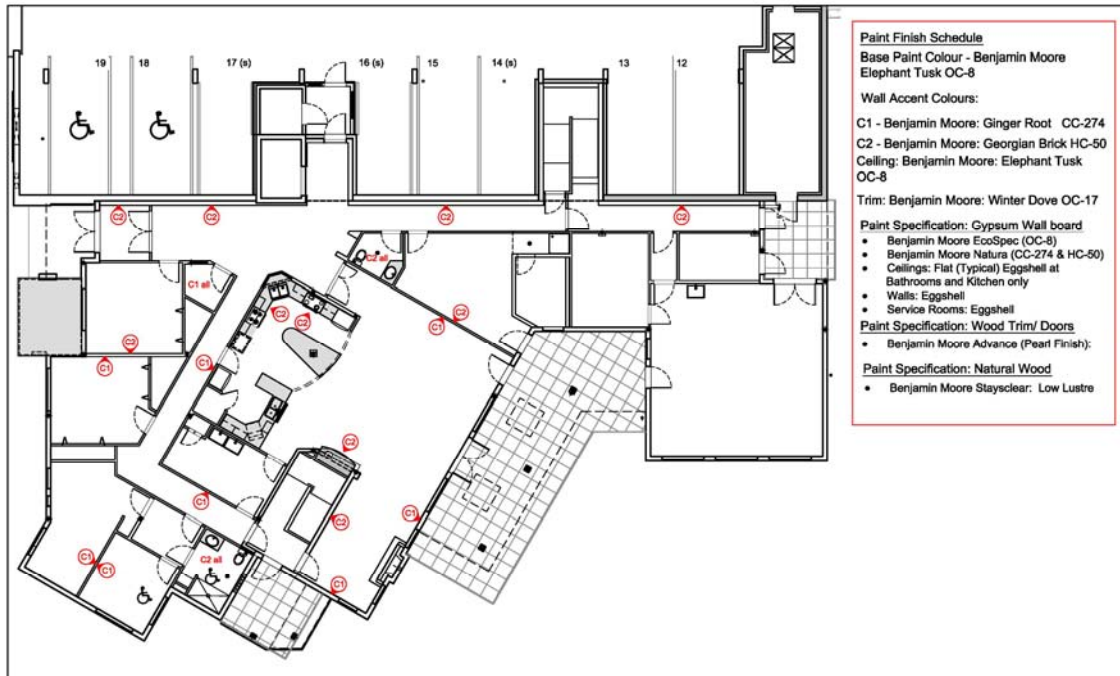


Section 09682 – Flooring units

- Standard Flooring in units 201, 204 and 305 – Forbo Marmoleum 3120 Rosato

Section 09910 – Paints and coatings (Interior)

- Latex paints 0 VOC – Benjamin Moore EcoSpec
- All units: base colour Elephant Tusk OC-8, trim colour Winter Dove OC-17
- Four colours in common amenity area – as per image below



SCHEDULE "C" - DESCRIPTION
Wolf Willow Cohousing Outline Specifications – March 2012

Division 10 - Specialities

Section 10305 - Manufactured Fireplaces

- Kingsman Solace gas fireplace in common house lounge with a simple ledgestone surround with a wood mantle

Section 10800 - Toilet and Bath Accessories – see attached specifications at the end of this document

- backing provided in shower wall for future addition of support bars
- Install backing to allow for ease of future installation of grab bar by toilet and tub
- bar for hanging a shower curtain
- one Moen Fina 24" Double Towel Bar (Chrome) YB9222CH
- one Moen Eva Pivoting Toilet Paper Holder (Chrome) YB2808CH
- one Moen Eva Double Robe Hook (Chrome) YB2803CH
- 3'6 x 4' mirror – no trim

Closets

- Melamine shelving and wood hanging bar

Division 15 - Mechanical

Section 15400 – Plumbing for units - see attached specifications at the end of this document

- Chrome fixtures throughout: low flow – use model numbers below:
 - Single control kitchen faucet with pull out spray: Moen Camerist 7545 Series
 - Two handle control bathroom sink: Moen Eva T6420 series
 - Single handle tub/shower faucet: Moen Eva Posi-Temp Model: T2133 + 2570
 - Kitchen sink: Kindred (Steel Queen) QDL2031/8
 - Bathroom sink: American Standard Aqualyn Countertop Sink 0476 028 (White; 4" centers)
 - Toilet: Caroma Bondi 270 dual flush toilet
 - Tub: Maax TSEA 62 1 Piece - 5 feet (fibreglass/gelcoat)
 - **Note: Units 201 and 204 are upgraded** from standard tub/shower combo (Maax TSEA62 one piece) to separate tub Maax Pacific Line PLREA6032 with standard features and Moen Eva two handled roman tub faucet and a Hytec PA 17 (42" x 36") shower (or equivalent) with Moen Eva showerhead and glass shower door with chrome trim
- hook-ups for washer/dryer included in all units except units 202, 302 and 402.

Section 15400 – Plumbing for common amenity area

- Five exterior hose bibs
- Gas connections for a range, gas fireplace and exterior barbeque
- One double laundry tub with single swivel faucet (in common laundry room)
- One double regular sized sink in common house QDL2031/8 (same as units)
- One double deep pot sink in common house QD2035/10
- one handicap washroom with Caroma Bondi 270 dual flush toilet, American Standard Aqualyn Countertop Sink 0476 028 and Maax SS3660 shower;
- one regular with Caroma Bondi 270 dual flush toilet, American Standard Aqualyn Countertop Sink 0476 028 and Maax SS36 shower

SCHEDULE "C" - DESCRIPTION
Wolf Willow Cohousing Outline Specifications – March 2012

Section 15700 - Heating, Ventilating, and Air Conditioning

- Natural gas high efficiency condensing boilers to supply hot water for heating
- Domestic hot water will be produced by one of the condensing boilers that is part of the building heating plant and a hot water storage tank with internal heating coil.
- Radiant floor heating throughout the building for heating the living units, common house areas and the enclosed walkways.
 - Common house to include eight separate thermostatically controlled heat zones: MP-1, MP-2, guest room-1, guest room-2/washroom, entrance lobby, kitchen/dining/lounge, exercise/sauna, and workshop/electrical room.
 - Two separate thermostatically controlled heat zones in each unit – one for master bedroom ONLY, the other for all other living areas including the bathroom
- Living units will have a heat recovery ventilator (HRV) to provide ventilation. The HRVs will exhaust continuously from the bathroom of each living unit and will supply outside air to each unit. The fresh air will be reheated to raise the supply air temperatures to room conditions.

SERIES 7240
HEAT RECOVERY VENTILATOR
FOR APARTMENTS AND CONDOMINIUMS



part #672400



Casing

Material : Pre-painted steel 24GA
Isolation : fibre glass with FSK
Drain connection : Ø3/8"
Duct diameter: Ø6 in
Height : 10 in
Width : 22 1/4 in
Depth : 24 1/8 in
Weight : 35 lbs

Mount

Suspended by chains with anti-vibration springs or on a shelf

Ventilators

Number : 2
Type : Motorized impeller (forward inclined centrifugal fan)

Electrical Specifications

Tension : 120 VAC
Frequency : 60 Hz
Amperage : 1.5 A
Power : 180 Watt
Extension Cord: 3 feet with a 3 prongs plug

- Ventilation for the common house area will be provided by a central HRV with a heating coil.
- Air conditioning is NOT included
- Install infrastructure ONLY to allow for future solar hot water
- Gas will be on a single meter for all heating. The owners will need to monitor the gas consumption on the boilers if they want to determine the amount of gas collectively used by the residents with gas appliances (ranges, fireplace and/or barbecues).

Division 16 – Electrical

General

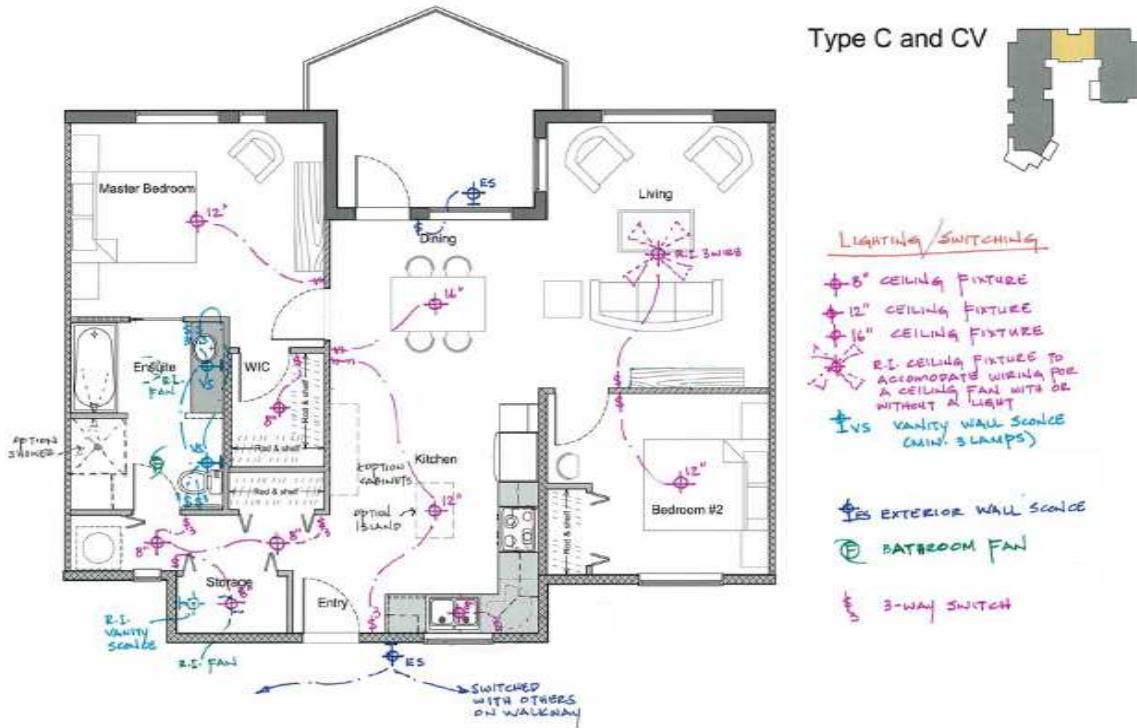
- Install infrastructure only to allow for future photo voltaic solar panels

SCHEDULE "C" - DESCRIPTION

Wolf Willow Cohousing Outline Specifications – March 2012

Units

- Typical lighting plan below:



- Include wiring ONLY for overhead lighting with fan in bedrooms and living room - owner to install fixture at construction completion
- Pre-wire only for fixture in dining room and central kitchen (over island) - owner to install fixtures at construction completion
- Include dimmers on all lights except closets and storage areas.
- Light fixtures installed as per below:



- 8" fixture (incandescent or twist-in compact fluorescent) installed over sink, in walk-in closet, storage and bathroom ceiling



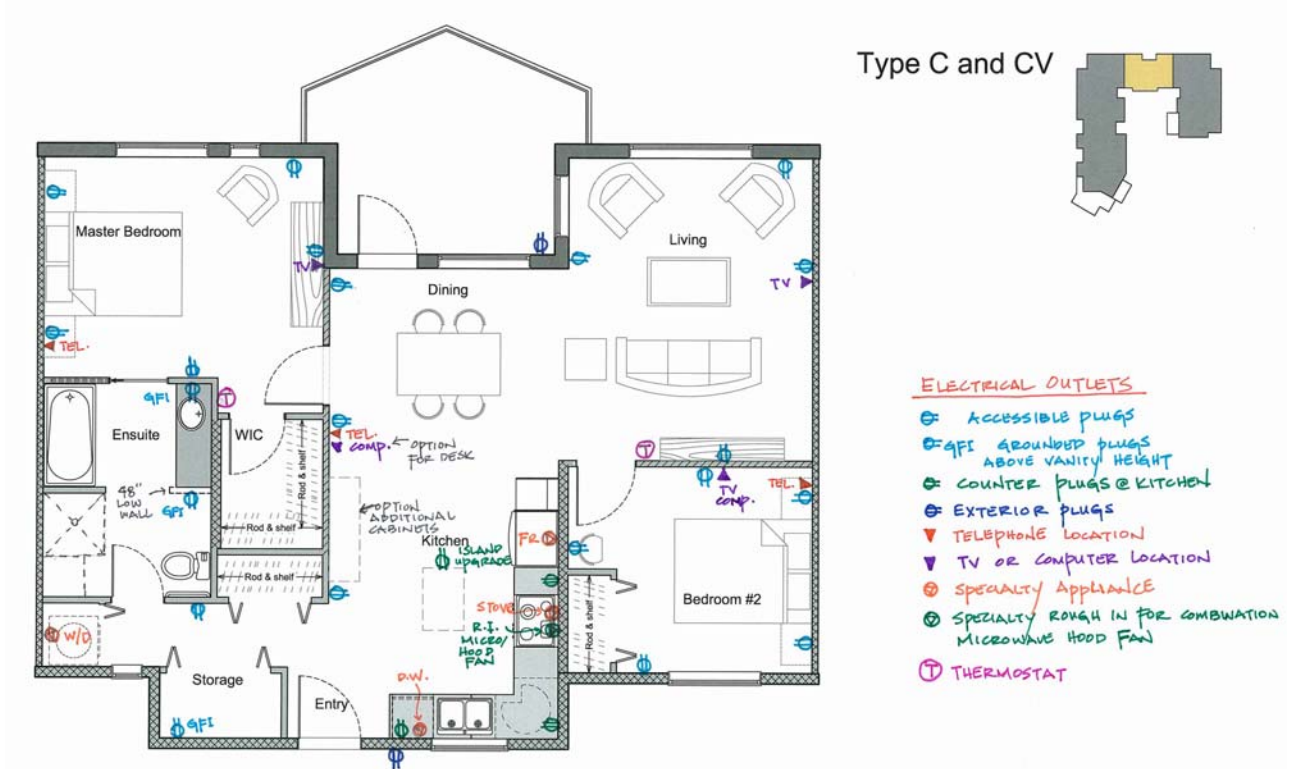
- 12" fixture (incandescent or twist-in compact fluorescent) installed in hallways



- Halogen with 3 lights installed in bathrooms over the vanity

SCHEDULE "C" - DESCRIPTION
Wolf Willow Cohousing Outline Specifications – March 2012

- Electric power will be separately metered for each unit
- NO doorbells at unit entries
- one exterior electrical outlet per exterior door
- Decora outlets and switches: for universal accessibility all electrical outlets will be located at 18" from the floor (rather than 12"), other than the outlets at kitchen countertop height and all switches will be located at 3' from the floor (rather than 3'6")
- a silenceable horn in each suite bedroom and a 120V smoke alarm in the hallway in each suite.
- Provide electrical outlet below counter in "dishwasher cabinet" to allow for future installation.
- A 30A 208V receptacle will be provided for the stacking washer and dryer and for the kitchen range.
- Pre-wire for hood fan vented to outdoors, plus pre-wire for microwave hood fan,
- electrical to be generally as per typical plan below



Common Areas:

- The common amenity spaces, enclosed hallways and parking will be on a "house panel" and the costs for this will be included in the monthly maintenance fees.
- Common house appliances provide: electric connection for a wall oven, cook top, microwave, refrigerator, freezer, commercial dishwasher (rough-in specifications based on Moyer Diebel 501HT) and three stacked front load washers and electric dryers
- Common area lighting as per fixture schedule attached
- Exterior metal halide wall pack light fixtures on building exterior to illuminate the surrounding site area. The exterior lights will be controlled by a single photocell hand-off-auto switch.
- Enclosed energy efficient T5 fluorescent lamps and magnetic ballasts in the parkade.

SCHEDULE "C" - DESCRIPTION
Wolf Willow Cohousing Outline Specifications – March 2012

- The common corridor and stairwells will be lit by a combination of surface mount T8 fluorescent fixtures and compact fluorescent wall sconces. Fixtures utilized in areas that are exposed to the elements will need to be rated for wet locations.
- An entry phone system will be utilized to provide an audio link to the main entry doors. The system will be integral with the telephone system and the suite telephone handsets will be utilized as the suite intercom – The intercom panel can be set up to send a wireless message to the residence's cell phone (or land line) and resident can release the door lock by pressing a predetermined key (such as the # key).
- Provide access to parking with a garage door opener to be installed during construction.
- To allow for future security requirements pre-wire cat6 cable at the building entry points, parkade by elevator, by garbage area and at the entrance to parkade to allow for future installation of webcam if this is considered desirable
- Allow for 24 outlets for vehicle heaters

- Common house security
 - There are three outside doors onto the patio area (from the workshop, exercise room and the dining room) that will not be self-locking to allow residents to freely leave and enter without a key. Protocols will need to be in place at occupancy to ensure these doors are locked when they need to be.
 - The door from Ave J into the entrance vestibule will not be self locking to allow guests to enter the vestibule to use the entry phone to contact residents. This door can be locked in the evenings if required. There will be handicap electronic push button at the main entrance both outside and inside the vestibule to operate the main entrance doors. Residents will be able to use a code (rather than a key) to unlock the inner door if they choose.
 - All other doors on the main level will be self locking.

Division 16 – Interior Services

Units

- Pre-wire telephone outlets in the living room and each of the bedrooms
- Pre-wire TV Cable outlets in the living room and each of the bedrooms

Common House

- Include cable outlets in the common house office, dining room (where TV is indicated on the plans), MP room #1 by the entrance, exercise room, and both guest rooms
- Include telephone outlets in all the same locations noted above in close proximity to the cable outlets (most likely used for computer or television – not likely used for telephone).

Window coverings

Not included

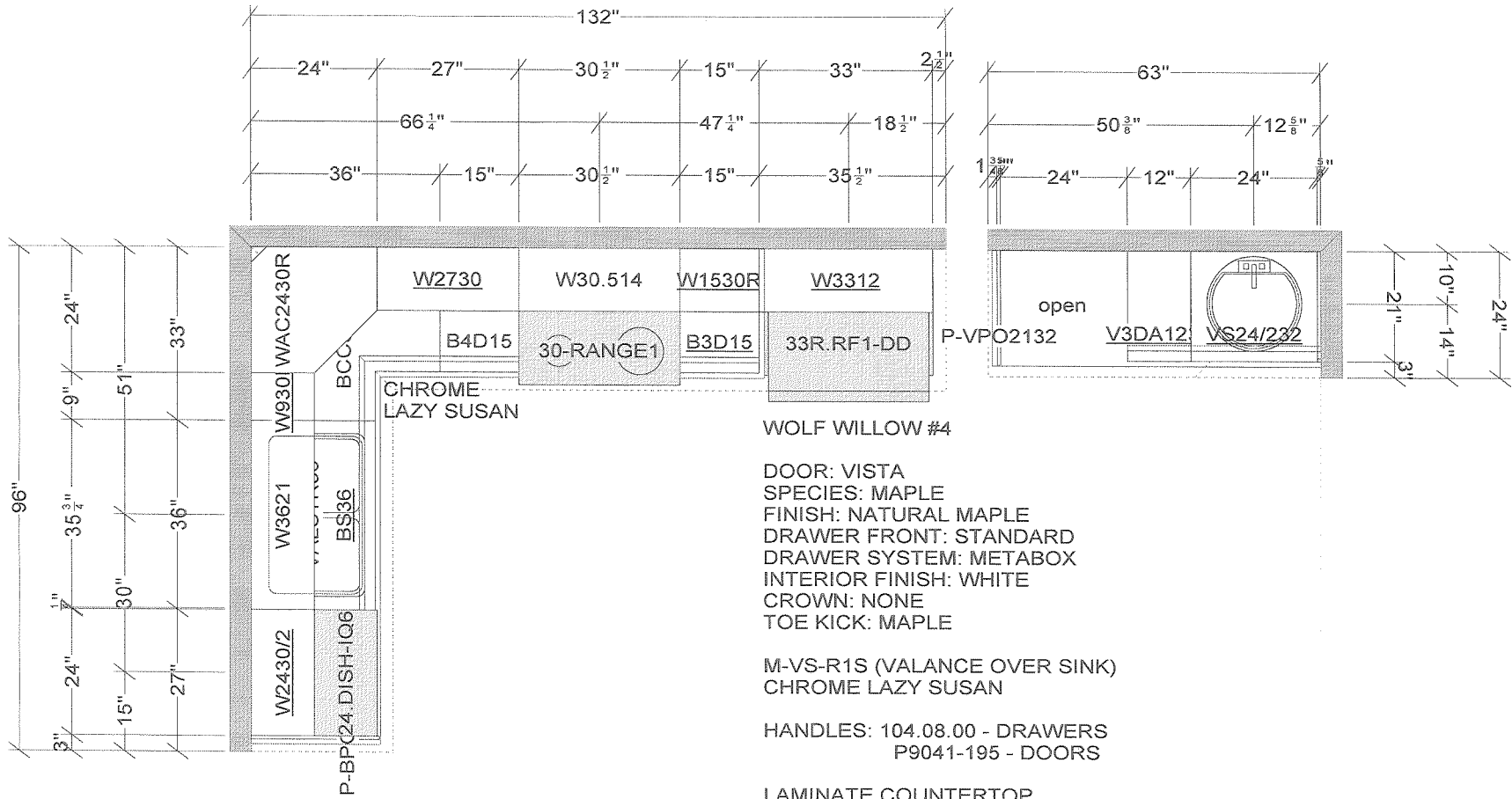
Rain screen as required with exterior cladding system

SCHEDULE "C" - DESCRIPTION
Wolf Willow Cohousing Outline Specifications - March 2012

Attachments:

- **Cabinet Shop Drawings for Units 201, 204, 305**
- **Cabinet Shop Drawings Common House Kitchen**
- **Toilet and Bath Accessories**
- **Plumbing Fixtures for the Units**
- **Common Area Lighting**

Cabinet Shop Drawings for Units 201, 204, 305



WOLF WILLOW #4

DOOR: VISTA
 SPECIES: MAPLE
 FINISH: NATURAL MAPLE
 DRAWER FRONT: STANDARD
 DRAWER SYSTEM: METABOX
 INTERIOR FINISH: WHITE
 CROWN: NONE
 TOE KICK: MAPLE

M-VS-R1S (VALANCE OVER SINK)
 CHROME LAZY SUSAN

HANDLES: 104.08.00 - DRAWERS
 P9041-195 - DOORS

LAMINATE COUNTERTOP
 COLOUR: BRONZED FUSION
 FINISH: MATTE FINISH
 EDGE: BULLNOSE
 BACKSPASH: YES

I HAVE REVIEWED THIS DRAWING AND APPROVE IT FOR CONSTRUCTION

DATE _____

CUSTOMER _____

All dimensions size designations given are subject to verification on job site and adjustment to fit job conditions.



This is an original design and must not be released or copied unless applicable fee has been paid or job order placed.

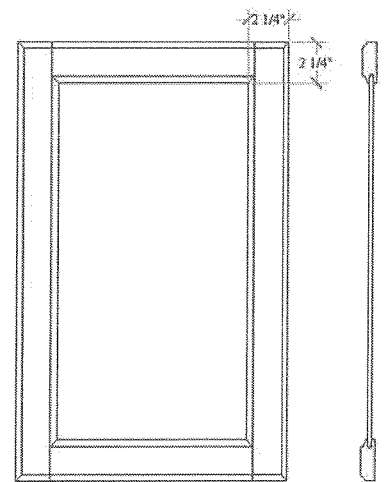
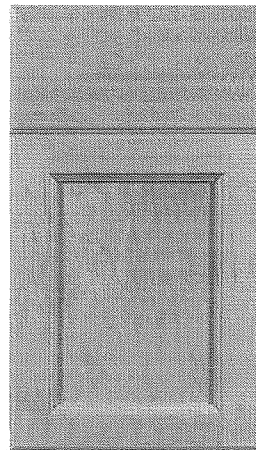
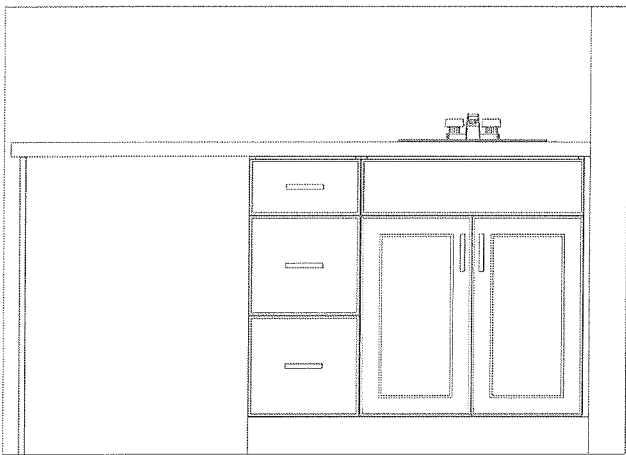
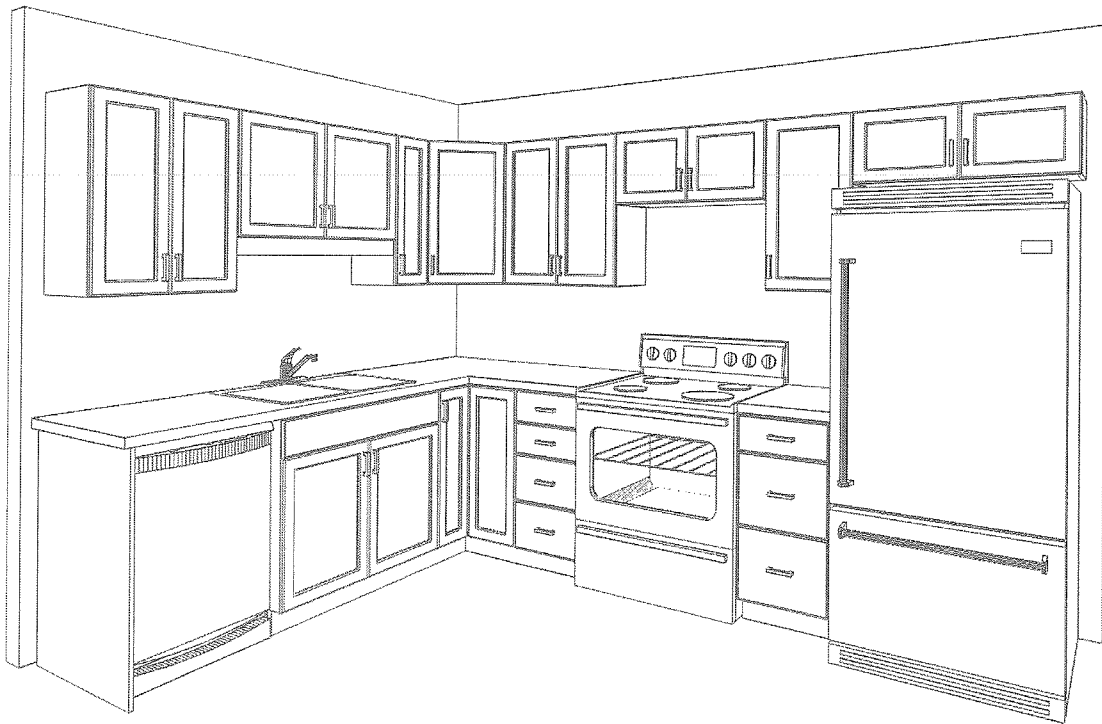
Designed: 1/16/2012
 Printed: 1/19/2012

Unit 204

All

Drawing #: 1

Scale : 0 3/8" = 1'



The door color shown in this picture is a generic door color and does not represent the actual color chosen for this job. The drawer front style shown is the standard one for this doorstyle.

Maple Vista

FINISH: NATURAL

I HAVE REVIEWED THIS DRAWING AND APPROVE IT FOR CONSTRUCTION

DATE _____

CUSTOMER _____

Note: This drawing is an artistic interpretation of the general appearance of the design. It is not meant to be an exact rendition.



Designed :1/16/2012
Printed: 1/19/2012

Unit 204

Drawing 1

Drawing #: 1

Waiver Notice for Wood Products

We are certain that you are considering wood cabinetry because of the beauty of natural variations in colour, texture and grain. Since wood is a natural product, its unique physical characteristics create distinct differences from piece to piece. As a natural product, the wood in your cabinetry will adjust to life in your home. Wood will continue to expand and contract with the change in seasons and humidity in your home. A 40-50% humidity level should be maintained. The sample that showcases the colour choice you have made, represents the quality and tone of our finishes only. This finish will be replicated only where similarities exist in shade and grain of the wood of this sample to that of the finished product. Variations in wood grain and texture will produce the differences from this sample to the finished product.

Antique Distressing (AD)/Antique Wear (AW) :

This process is meant to achieve the look of worn and aged doors and parts. The effect will create defects in the wood, therefore these defects will not be covered by warranty.

Clear Lacquer:

Our top coat lacquer has UV inhibitors that slows, but does not prevent the process of colour changes in wood, that happen naturally, due to age, exposure to light and other environmental elements.

Colour Variations:

As no two trees are alike, your wood cabinetry will also vary from piece to piece. Though it is our goal to produce a consistent finish as possible, there will be variation from the original sample, and some variation within your cabinetry. This is proof of the absolute uniqueness and beauty of real wood, therefore, slight colour variations are acceptable.

Painted Wood Finishes:

Hairline cracks in the finish at the joints of your doors are common and will not compromise the strength of the joints. These fine cracks will be most noticeable on Painted Wood Finishes. Cracking at joints on Painted Wood Finishes is characteristic, therefore not considered warranty.

Rustic Wood:

Rustic Wood will have considerable color variations such as dark coloured wood, abundant mineral streaks, knots and/or worm marks. Knots may have holes through doors up to 1/4" in diameter. This is characteristic of rustic wood.

Specialty/Fusion Finishes:

These specialty hand finishes are created by our skilled finishers and are artistic in nature. As a result of the artistic process, variation from piece to piece is characteristic and showcases the unique appeal of this application.

Veneer Materials:


Wood veneer products are used on all panels of our 1/4" panel doors, finished sides, toe-kick material and filler material. Solid wood and veneer material are manufactured differently, therefore there can be a noticeable variation between the solid wood material and wood veneer material. Veneer materials are created by slicing real wood thinly, and adhering it to medium density fiber board, or particle core material. Because veneer does not have the depth of solid wood, it can accept stain differently. This is acceptable in the cabinet and furniture industry and will not be grounds for replacement.

Wood Species:

The following are characteristics and distinct features of each wood species, therefore will not be grounds for replacement.

- Alder** Alder is a relatively soft hardwood of medium density. It is a lightweight, soft, fine-grained wood. The natural colour of Alder is a honey to reddish-brown.
- Cherry** Cherry is a wood that contains pitch pockets and mineral deposits. It will darken considerably as it ages due to exposure to light. This is a trait of cherry.
- Hickory** There is a distinct colour variation in the grain of hickory wood. This colour variation is a trademark of Hickory wood. Finished sides may have a repetitive striping pattern due to the book matching of the hickory veneer. These are characteristic of hickory.
- Maple** Due to the nature of Maple, some stains may produce irregular colour patterns. These irregularities occur within maple due to variations in grain density.
- Oak** Oak is a hard porous wood. Oak absorbs more stain on the open grain areas. Greater colour variation may be noticeable between stiles and rails due to opposing grain direction. Occasional sound pin knots may occur. This is the nature of oak.
- Rift Cut Oak** Rift Cut oak is achieved by cutting oak at a slight angle. The grain will be moderately fine and straight with minimal fleck, however due to the nature of wood, variation will occur from piece to piece.
- Exotic Veneer** Exotic wood veneer products are used on 3/4" MDF core doors. These reconstituted wood products are engineered using common wood fibers to replicate nature's most desired and rare species. Because these veneers are produced from common sources, they may contain slight grain variance from that which the true exotic wood may contain. It is with intent to preserve these rare forests, therefore, this is acceptable in the cabinet and furniture industry.

We, the undersigned, have read and understood the information provided above.

Customer Name:	LEDCOR CONSTRUCTION
Customer Signature:	
Design Consultant Signature:	

Proposal

Customer Number:	Date: January 20, 2012
Customer: (Approved by Ronaye Matthew)	Designed: SASKATOON HOUSE
Address: WOLF WILLOW PROJECT	By:
City, Prov: SASKATOON, SK	Phone: 306.667.6600
Home:	Fax: 306.667.6687
Work:	Email:
Fax:	Tag: Wolf Willow #4 (No Owner)
Cell:	
Email:	

I HEREBY SUBMIT SPECIFICATIONS AND ESTIMATES FOR:
 The SUPPLY, DELIVERY and INSTALL of CABINETS and COUNTERTOPS
 as per our floor plan with the following highlights:

Room:	KITCHEN & VANITY
Finish:	Natural
Species:	Maple
Door Style:	Vista
Drawer Front Style:	Standard
Drawer Box Type:	Metabox
Interior Finish:	White interior
Crown Moulding:	Not applicable
Light Valance:	Not applicable
Toe Kick:	Maple
Door Hardware:	Brushed Chrome Knob, Standard (H-P9041-195)
Drawer Hardware:	Square Edge Curved Pull, Brushed Nickel (H-104.08.000)
Counter Top Description:	LAMINATE - BRONZED FUSION - MATTE FINISH - BULLNOSE EDGE - BACKSPLASH
Special Features:	CHROME WIRE LAZY SUSAN; VALANCE ABOVE SINK

Notes: NO UPGRADES

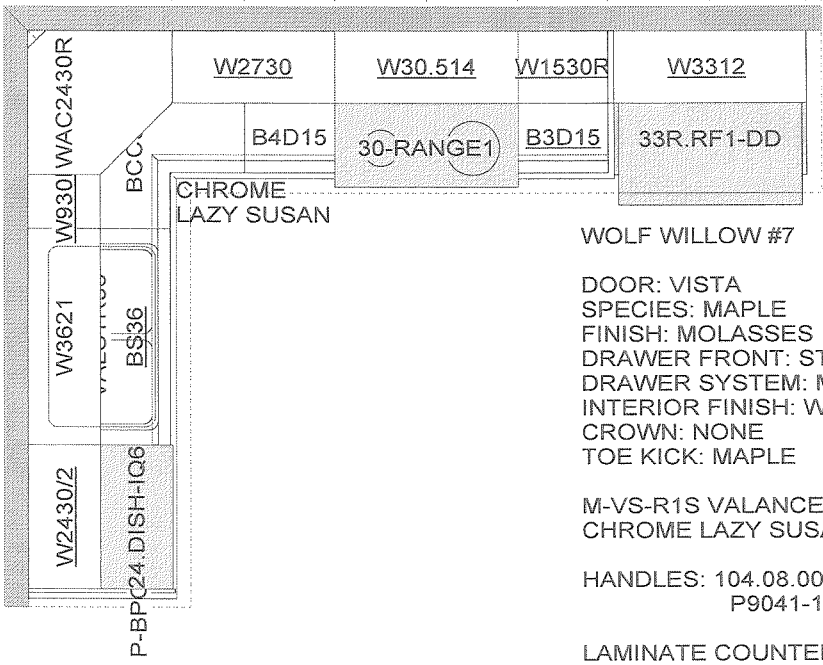
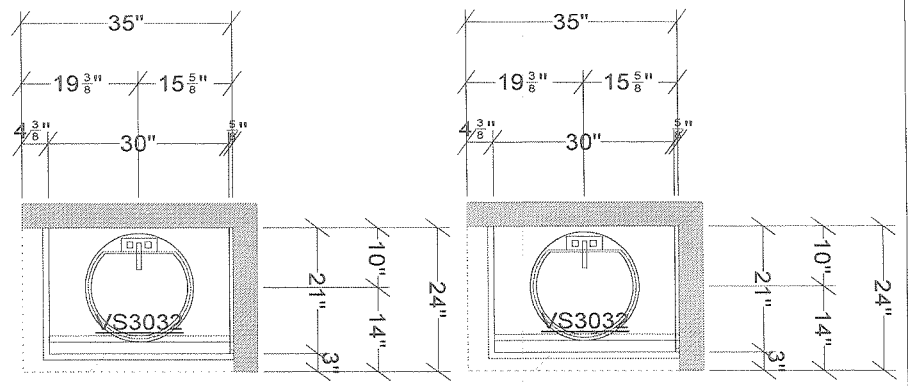
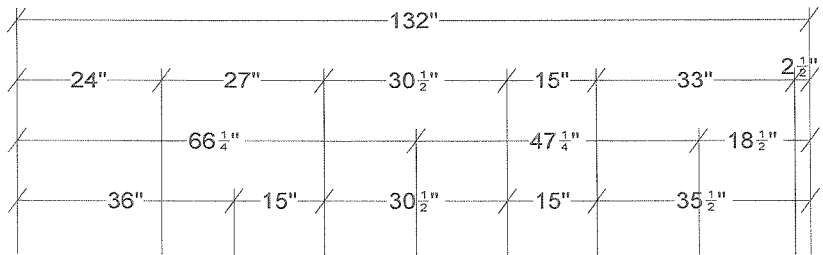
Sale Price: \$0.00
GST: \$0.00
PST:
HST:
Total Price: \$0.00

Submitted By: *[Signature]*

I HAVE REVIEWED THE ABOVE SELECTIONS AND APPROVED THEM FOR CONSTRUCTION.

CUSTOMER: _____ **DATE:** _____

Please Note - Superior Cabinets is not responsible for plumbing or electrical work. Any changes to the proposed layout are subject to revised pricing. Pricing is in effect for 45 days from date submitted, upon which time Superior Cabinets does reserve the right to withdraw its proposal. If the bid is successful, Superior Cabinets will hold pricing to the end of the calendar year from which the proposal was submitted. Superior Cabinets also reserves the right to withdraw its proposal should the purchaser not meet the required credit criteria. Prices are subject to all applicable taxes. Please check with the Design Consultant for current lead-times on Cabinet orders, Counter Tops and Installation.



WOLF WILLOW #7

DOOR: VISTA
 SPECIES: MAPLE
 FINISH: MOLASSES
 DRAWER FRONT: STANDARD
 DRAWER SYSTEM: METABOX
 INTERIOR FINISH: WHITE
 CROWN: NONE
 TOE KICK: MAPLE

M-VS-R1S VALANCE (OVER SINK)
 CHROME LAZY SUSAN

HANDLES: 104.08.00 - DRAWERS
 P9041-195 - DOORS

LAMINATE COUNTERTOP
 COLOUR: BEIGE LINEN AT301
 FINISH: SUEDE
 EDGE: BULLNOSE
 BACKSPLASH: NONE

I HAVE REVIEWED THIS DRAWING AND APPROVE IT FOR CONSTRUCTION

DATE _____

CUSTOMER _____

All dimensions size designations given are subject to verification on job site and adjustment to fit job conditions.

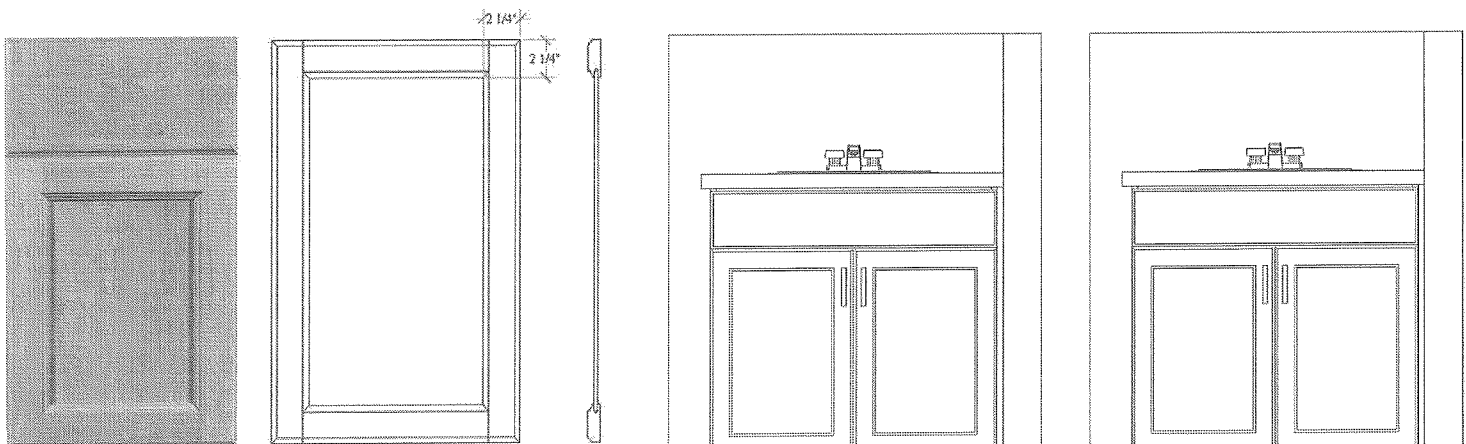
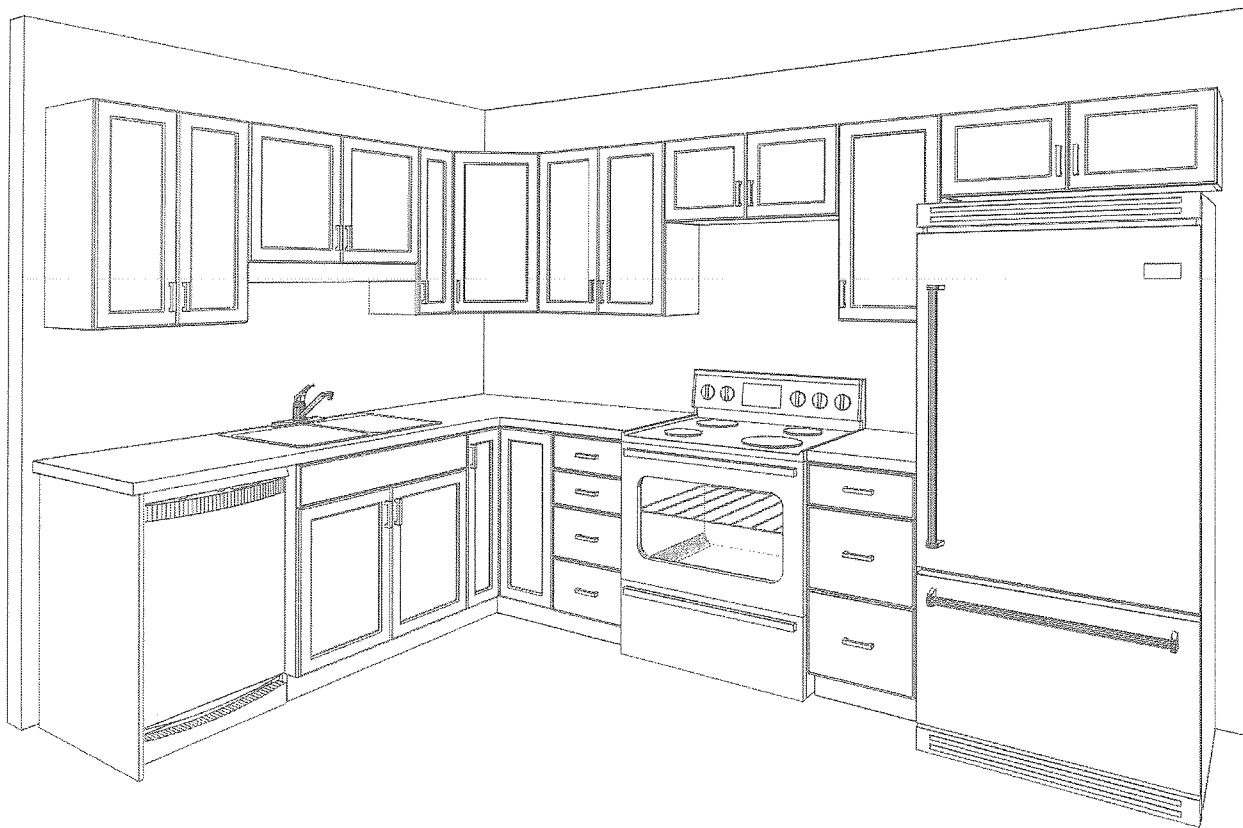


This is an original design and must not be released or copied unless applicable fee has been paid or job order placed.

Designed: 1/16/2012
 Printed: 1/19/2012

Unit 201

All Drawing #: 1



Maple Vista

The door color shown in this picture is a generic door color and does not represent the actual color chosen for this job. The drawer front style shown is the standard one for this doorstyle.

FINISH: MOLASSES

I HAVE REVIEWED THIS DRAWING AND APPROVE IT FOR CONSTRUCTION

DATE _____
 COST EST. _____

Note: This drawing is an artistic interpretation of the general appearance of the design. It is not meant to be an exact rendition.



Designed : 1/16/2012
 Printed: 1/19/2012

Waiver Notice for Wood Products

We are certain that you are considering wood cabinetry because of the beauty of natural variations in colour, texture and grain. Since wood is a natural product, its unique physical characteristics create distinct differences from piece to piece. As a natural product, the wood in your cabinetry will adjust to life in your home. Wood will continue to expand and contract with the change in seasons and humidity in your home. A 40-50% humidity level should be maintained. The sample that showcases the colour choice you have made, represents the quality and tone of our finishes only. This finish will be replicated only where similarities exist in shade and grain of the wood of this sample to that of the finished product. Variations in wood grain and texture will produce the differences from this sample to the finished product.

Antique Distressing (AD)/Antique Wear (AW) :

This process is meant to achieve the look of worn and aged doors and parts. The effect will create defects in the wood, therefore these defects will not be covered by warranty.

Clear Lacquer:

Our top coat lacquer has UV inhibitors that slows, but does not prevent the process of colour changes in wood, that happen naturally, due to age, exposure to light and other environmental elements.

Colour Variations:

As no two trees are alike, your wood cabinetry will also vary from piece to piece. Though it is our goal to produce a consistent finish as possible, there will be variation from the original sample, and some variation within your cabinetry. This is proof of the absolute uniqueness and beauty of real wood, therefore, slight colour variations are acceptable.

Painted Wood Finishes:

Hairline cracks in the finish at the joints of your doors are common and will not compromise the strength of the joints. These fine cracks will be most noticeable on Painted Wood Finishes. Cracking at joints on Painted Wood Finishes is characteristic, therefore not considered warranty.

Rustic Wood:

Rustic Wood will have considerable color variations such as dark coloured wood, abundant mineral streaks, knots and/or worm marks. Knots may have holes through doors up to 1/4" in diameter. This is characteristic of rustic wood.

Specialty/Fusion Finishes:

These specialty hand finishes are created by our skilled finishers and are artistic in nature. As a result of the artistic process, variation from piece to piece is characteristic and showcases the unique appeal of this application.

Veneer Materials:

Wood veneer products are used on all panels of our 1/4" panel doors, finished sides, toe-kick material and filler material. Solid wood and veneer material are manufactured differently, therefore there can be a noticeable variation between the solid wood material and wood veneer material. Veneer materials are created by slicing real wood thinly, and adhering it to medium density fiber board, or particle core material. Because veneer does not have the depth of solid wood, it can accept stain differently. This is acceptable in the cabinet and furniture industry and will not be grounds for replacement.

Wood Species:

The following are characteristics and distinct features of each wood species, therefore will not be grounds for replacement.

- Alder** Alder is a relatively soft hardwood of medium density. It is a lightweight, soft, fine-grained wood. The natural colour of Alder is a honey to reddish-brown.
- Cherry** Cherry is a wood that contains pitch pockets and mineral deposits. It will darken considerably as it ages due to exposure to light. This is a trait of cherry.
- Hickory** There is a distinct colour variation in the grain of hickory wood. This colour variation is a trademark of Hickory wood. Finished sides may have a repetitive striping pattern due to the book matching of the hickory veneer. These are characteristic of hickory.
- Maple** Due to the nature of Maple, some stains may produce irregular colour patterns. These irregularities occur within maple due to variations in grain density.
- Oak** Oak is a hard porous wood. Oak absorbs more stain on the open grain areas. Greater colour variation may be noticeable between stiles and rails due to opposing grain direction. Occasional sound pin knots may occur. This is the nature of oak.
- Rift Cut Oak** Rift Cut oak is achieved by cutting oak at a slight angle. The grain will be moderately fine and straight with minimal fleck, however due to the nature of wood, variation will occur from piece to piece.
- Exotic Veneer** Exotic wood veneer products are used on 3/4" MDF core doors. These reconstituted wood products are engineered using common wood fibers to replicate nature's most desired and rare species. Because these veneers are produced from common sources, they may contain slight grain variance from that which the true exotic wood may contain. It is with intent to preserve these rare forests, therefore, this is acceptable in the cabinet and furniture industry.

We, the undersigned, have read and understood the information provided above.

Customer Name:

LEDCOR CONSTRUCTION

Customer Signature:

Design Consultant
Signature:



Proposal

Customer Number:

Date: January 20, 2012

Customer: (Approved by Ronaye Matthew)

Designed SASKATOON HOUSE

By:

Address: WOLF WILLOW PROJECT

Phone: 306.667.6600

City, Prov: SASKATOON, SK

Fax: 306.667.6687

Home:

Email:

Work:

Tag: Wolf Willow #7 (No Owner)

Fax:

Cell:

Email:

I HEREBY SUBMIT SPECIFICATIONS AND ESTIMATES FOR:
 The SUPPLY, DELIVERY and INSTALL of CABINETS and COUNTERTOPS
 as per our floor plan with the following highlights:

Room: KITCHEN & VANITIES
Finish: Molasses
Species: Maple
Door Style: Vista
Drawer Front Style: Standard
Drawer Box Type: Metabox
Interior Finish: White interior
Crown Moulding: Not applicable
Light Valance: Not applicable
Toe Kick: Maple
Door Hardware: Brushed Chrome Knob, Standard (H-P9041-195)
Drawer Hardware: Square Edge Curved Pull, Brushed Nickel (H-104.08.000)
Counter Top Description: LAMINATE - BEIGE LINEN - SUEDE FINISH - BULLNOSE EDGE - NO BACKSPLASH
Special Features: CHROME WIRE LAZY SUSAN; VALANCE ABOVE SINK

Notes: NO UPGRADES

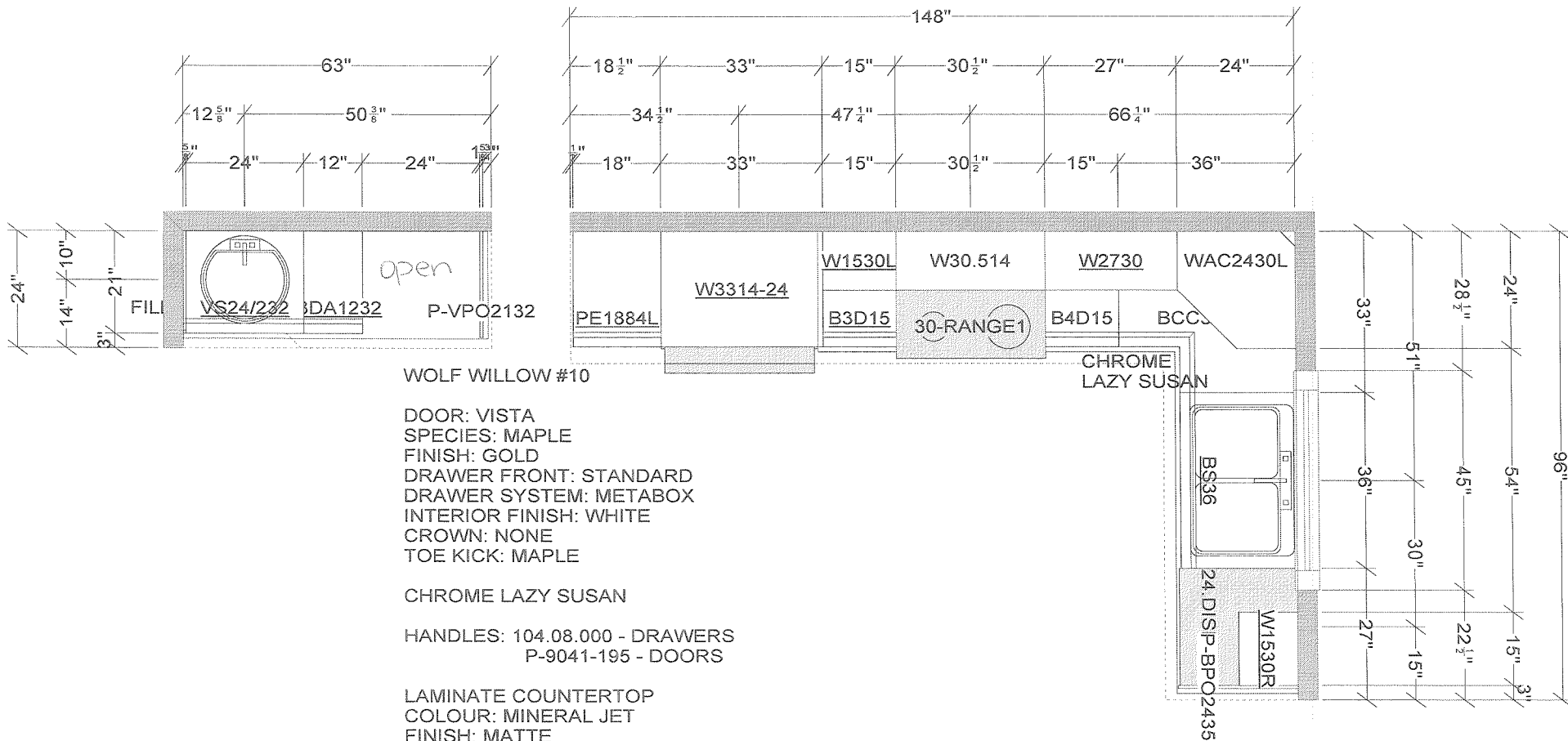
Sale Price: \$0.00
GST: \$0.00
PST:
HST:
Total Price: \$0.00

Submitted By: 

I HAVE REVIEWED THE ABOVE SELECTIONS AND APPROVED THEM FOR CONSTRUCTION.

CUSTOMER: _____ **DATE:** _____

Please Note - Superior Cabinets is not responsible for plumbing or electrical work. Any changes to the proposed layout are subject to revised pricing. Pricing is in effect for 45 days from date submitted, upon which time Superior Cabinets does reserve the right to withdraw its proposal. If the bid is successful, Superior Cabinets will hold pricing to the end of the calendar year from which the proposal was submitted. Superior Cabinets also reserves the right to withdraw its proposal should the purchaser not meet the required credit criteria. Prices are subject to all applicable taxes. Please check with the Design Consultant for current lead-times on Cabinet orders, Counter Tops and Installation.



WOLF WILLOW #10

DOOR: VISTA
 SPECIES: MAPLE
 FINISH: GOLD
 DRAWER FRONT: STANDARD
 DRAWER SYSTEM: METABOX
 INTERIOR FINISH: WHITE
 CROWN: NONE
 TOE KICK: MAPLE

CHROME LAZY SUSAN

HANDLES: 104.08.000 - DRAWERS
 P-9041-195 - DOORS

LAMINATE COUNTERTOP
 COLOUR: MINERAL JET
 FINISH: MATTE
 EDGE: BULLNOSE
 BACKSPLASH: YES

I HAVE REVIEWED THIS DRAWING AND APPROVED IT FOR CONSTRUCTION

DATE _____

CUSTOMER _____

All dimensions size designations given are subject to verification on job site and adjustment to fit job conditions.



This is an original design and must not be released or copied unless applicable fee has been paid or job order placed.

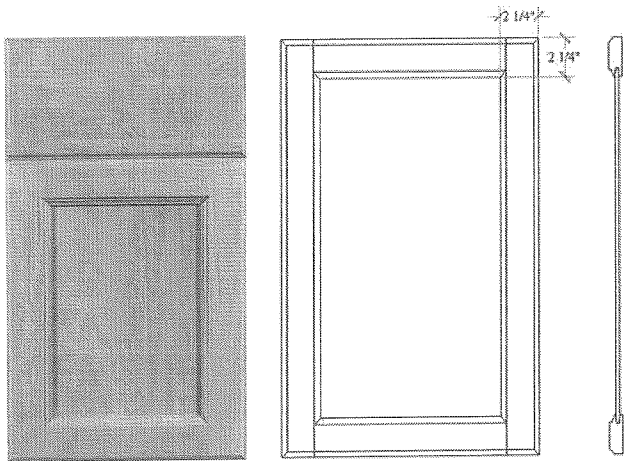
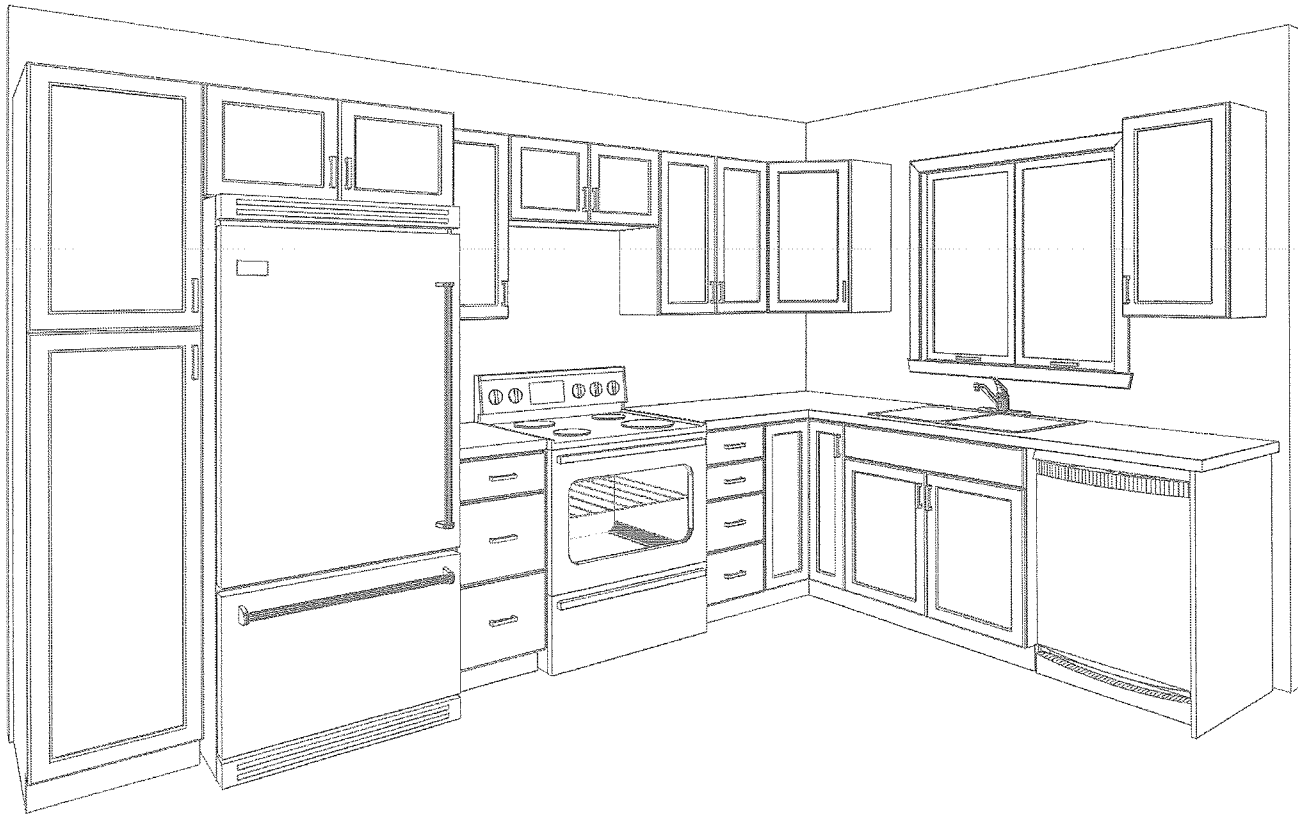
Designed: 1/16/2012
 Printed: 1/19/2012

Unit 305

All

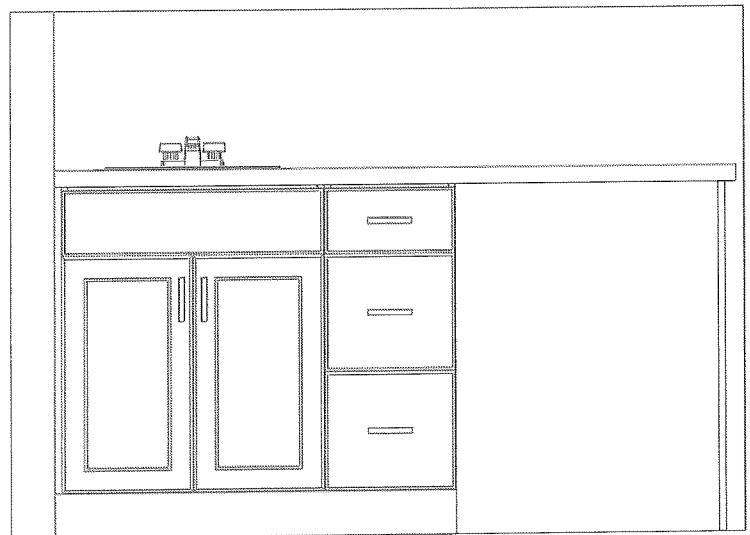
Drawing #: 1

Scale : 0 3/8" = 1'



The door color shown in this picture is a generic door color and does not represent the actual color chosen for this job. The drawer front style shown is the standard one for this doorstyle.

Maple Vista



FINISH: GOLD

I HAVE REVIEWED THIS DRAWING AND APPROVE IT FOR CONSTRUCTION

DATE _____

CUSTOMER _____

Note: This drawing is an artistic interpretation of the general appearance of the design. It is not meant to be an exact rendition.



Designed :1/16/2012
Printed: 1/19/2012

Waiver Notice for Wood Products

We are certain that you are considering wood cabinetry because of the beauty of natural variations in colour, texture and grain. Since wood is a natural product, its unique physical characteristics create distinct differences from piece to piece. As a natural product, the wood in your cabinetry will adjust to life in your home. Wood will continue to expand and contract with the change in seasons and humidity in your home. A 40-50% humidity level should be maintained. The sample that showcases the colour choice you have made, represents the quality and tone of our finishes only. This finish will be replicated only where similarities exist in shade and grain of the wood of this sample to that of the finished product. Variations in wood grain and texture will produce the differences from this sample to the finished product.

Antique Distressing (AD)/Antique Wear (AW) :

This process is meant to achieve the look of worn and aged doors and parts. The effect will create defects in the wood, therefore these defects will not be covered by warranty.

Clear Lacquer:

Our top coat lacquer has UV inhibitors that slows, but does not prevent the process of colour changes in wood, that happen naturally, due to age, exposure to light and other environmental elements.

Colour Variations:

As no two trees are alike, your wood cabinetry will also vary from piece to piece. Though it is our goal to produce a consistent finish as possible, there will be variation from the original sample, and some variation within your cabinetry. This is proof of the absolute uniqueness and beauty of real wood, therefore, slight colour variations are acceptable.

Painted Wood Finishes:

Hairline cracks in the finish at the joints of your doors are common and will not compromise the strength of the joints. These fine cracks will be most noticeable on Painted Wood Finishes. Cracking at joints on Painted Wood Finishes is characteristic, therefore not considered warranty.

Rustic Wood:

Rustic Wood will have considerable color variations such as dark coloured wood, abundant mineral streaks, knots and/or worm marks. Knots may have holes through doors up to 1/4" in diameter. This is characteristic of rustic wood.

Specialty/Fusion Finishes:

These specialty hand finishes are created by our skilled finishers and are artistic in nature. As a result of the artistic process, variation from piece to piece is characteristic and showcases the unique appeal of this application.

Veneer Materials:

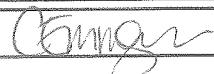
Wood veneer products are used on all panels of our 1/4" panel doors, finished sides, toe-kick material and filler material. Solid wood and veneer material are manufactured differently, therefore there can be a noticeable variation between the solid wood material and wood veneer material. Veneer materials are created by slicing real wood thinly, and adhering it to medium density fiber board, or particle core material. Because veneer does not have the depth of solid wood, it can accept stain differently. This is acceptable in the cabinet and furniture industry and will not be grounds for replacement.

Wood Species:

The following are characteristics and distinct features of each wood species, therefore will not be grounds for replacement.

- Alder** Alder is a relatively soft hardwood of medium density. It is a lightweight, soft, fine-grained wood. The natural colour of Alder is a honey to reddish-brown.
- Cherry** Cherry is a wood that contains pitch pockets and mineral deposits. It will darken considerably as it ages due to exposure to light. This is a trait of cherry.
- Hickory** There is a distinct colour variation in the grain of hickory wood. This colour variation is a trademark of Hickory wood. Finished sides may have a repetitive striping pattern due to the book matching of the hickory veneer. These are characteristic of hickory.
- Maple** Due to the nature of Maple, some stains may produce irregular colour patterns. These irregularities occur within maple due to variations in grain density.
- Oak** Oak is a hard porous wood. Oak absorbs more stain on the open grain areas. Greater colour variation may be noticeable between stiles and rails due to opposing grain direction. Occasional sound pin knots may occur. This is the nature of oak.
- Rift Cut Oak** Rift Cut oak is achieved by cutting oak at a slight angle. The grain will be moderately fine and straight with minimal fleck, however due to the nature of wood, variation will occur from piece to piece.
- Exotic Veneer** Exotic wood veneer products are used on 3/4" MDF core doors. These reconstituted wood products are engineered using common wood fibers to replicate nature's most desired and rare species. Because these veneers are produced from common sources, they may contain slight grain variance from that which the true exotic wood may contain. It is with intent to preserve these rare forests, therefore, this is acceptable in the cabinet and furniture industry.

We, the undersigned, have read and understood the information provided above.

Customer Name:	LEDCOR CONSTRUCTION
Customer Signature:	
Design Consultant Signature:	

Proposal

Customer Number:

Date: January 20, 2012

Customer: (Approved by Ronaye Matthew)

Designed SASKATOON HOUSE

Address: WOLF WILLOW PROJECT

By:
Phone: 306.667.6600

City, Prov: SASKATOON, SK

Fax: 306.667.6687

Home:

Email:

Work:

Tag: Wolf Willow #10 (No Owner)

Fax:

Cell:

Email:

I HEREBY SUBMIT SPECIFICATIONS AND ESTIMATES FOR:
 The SUPPLY, DELIVERY and INSTALL of CABINETS and COUNTERTOPS
 as per our floor plan with the following highlights:

Room: KITCHEN & VANITIES
Finish: Gold
Species: Maple
Door Style: Vista
Drawer Front Style: Standard
Drawer Box Type: Metabox
Interior Finish: White interior
Crown Moulding: Not applicable
Light Valance: Not applicable
Toe Kick: Maple
Door Hardware: Brushed Chrome Knob, Standard (H-P9041-195)
Drawer Hardware: Square Edge Curved Pull, Brushed Nickel (H-104.08.000)
Counter Top Description: LAMINATE - MINERAL JET - MATTE - BULLNOSE EDGE - BACSPLASH
Special Features: CHROME WIRE LAZY SUSAN

Notes: NO UPGRADES

Sale Price: \$0.00
GST: \$0.00
PST:
HST:
Total Price: \$0.00

Submitted By: 

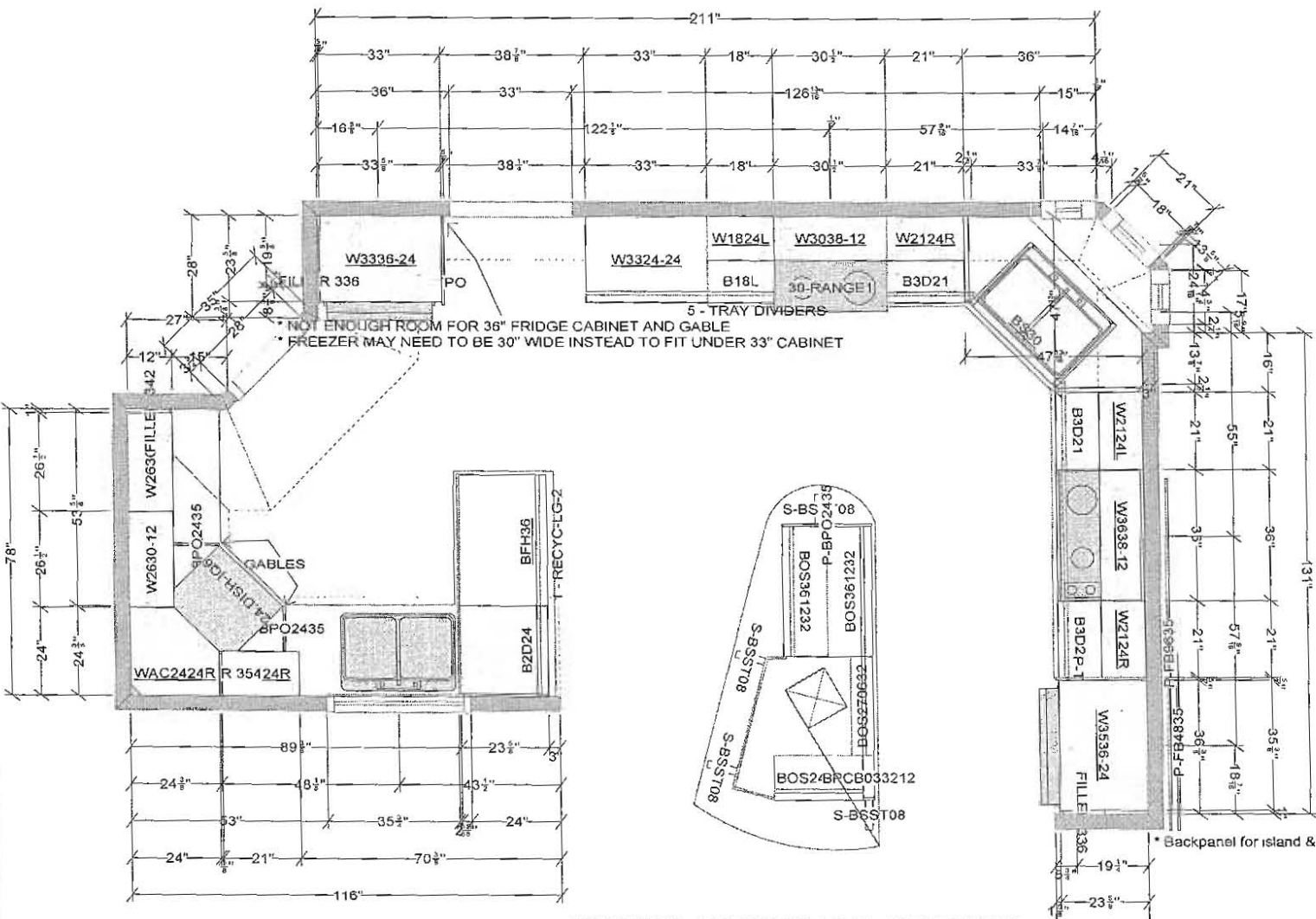
I HAVE REVIEWED THE ABOVE SELECTIONS AND APPROVED THEM FOR CONSTRUCTION.

CUSTOMER: _____ **DATE:** _____

Please Note - Superior Cabinets is not responsible for plumbing or electrical work. Any changes to the proposed layout are subject to revised pricing. Pricing is in effect for 45 days from date submitted, upon which time Superior Cabinets does reserve the right to withdraw its proposal. If the bid is successful, Superior Cabinets will hold pricing to the end of the calendar year from which the proposal was submitted. Superior Cabinets also reserves the right to withdraw its proposal should the purchaser not meet the required credit criteria. Prices are subject to all applicable taxes. Please check with the Design Consultant for current lead-times on Cabinet orders, Counter Tops and Installation.

Cabinet Shop Drawings Common House Kitchen

REVISED.



WOLF WILLOW - COMMON KITCHEN
 DOOR: TBD - 15 TO CHOOSE FROM***
 SPECIES: MDF/ FUSION
 FINISH: TBD - 12 TO CHOOSE FROM***
 DRAWER FRONT: STANDARD
 DRAWER SYSTEM: METABOX
 INTERIOR FINISH: WHITE
 CROWN: NONE
 TOE KICK: MDF
 HANDLES: HAFELE H-P16338-195
 CEILING HEIGHT: 114" - TBC
 LAMINATE COUNTERTOP
 COLOUR: GOLDEN MASCARELLO (3465-180FX) - TBC***
 FINISH: 180FX
 EDGE: SQUARE EDGE - TBC*** *W/ BACKSPLASH*
 BACKSPLASH: YES (AND POST IN ISLAND)
 SIDESPLASH: YES
 SINK: DROP IN

NATURAL SHOWER MAPLE.
 HAFELE H9500, BHI
 HANDLES.

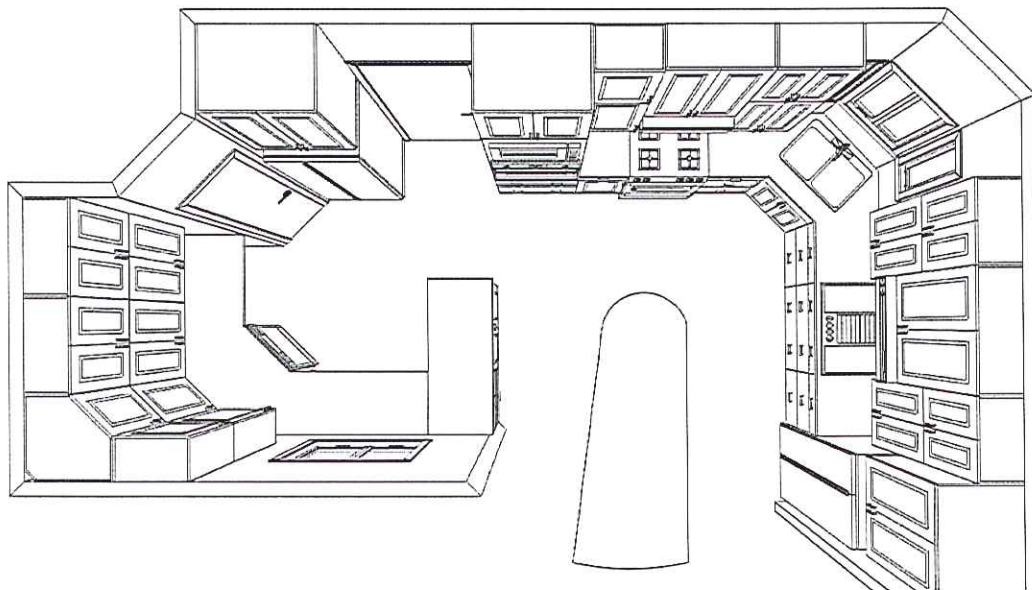
- * WHAT IS WALL LENGTH ON WALL ON RH SIDE OF FRIDGE?
- * BASE RANGE 3 DRAWER? NEED COOKTOP SPECS
- * WE DON'T HAVE A BDS42 - MAYBE STD SINK BASE INSTEAD? - NO ACCESS IN SOME AREAS
- * HAVE TO PICK BETWEEN 30 SINK BASE OR 45" DIMENSION - CAN'T HAVE BOTH!
- * WOOD SHELF BEHIND SINK NOT INCLUDED
- * SEAMS WILL BE VISIBLE WHERE WE HAVE STACKED CABINETS.
- * UNLESS WE DO A CUSTOM CABINET, NO BOS36 OPEN BOTH SIDES

All dimensions size designations given are subject to verification on job site and adjustment to fit job conditions.



This is an original design and must not be released or copied unless applicable fee has been paid or job order placed.

Designed: 12/3/2011
 Printed: 12/21/2011



Note: This drawing is an artistic interpretation of the general appearance of the design. It is not meant to be an exact rendition.



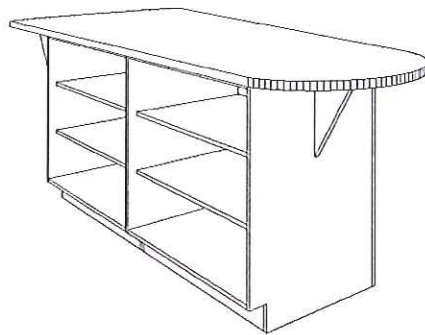
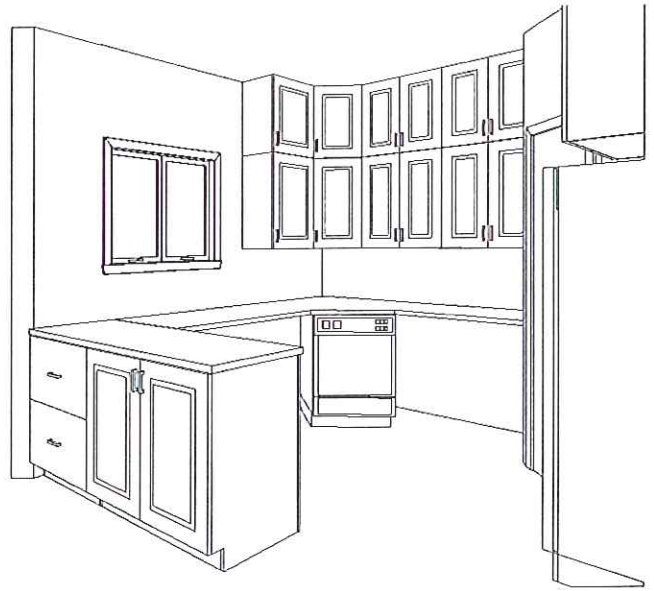
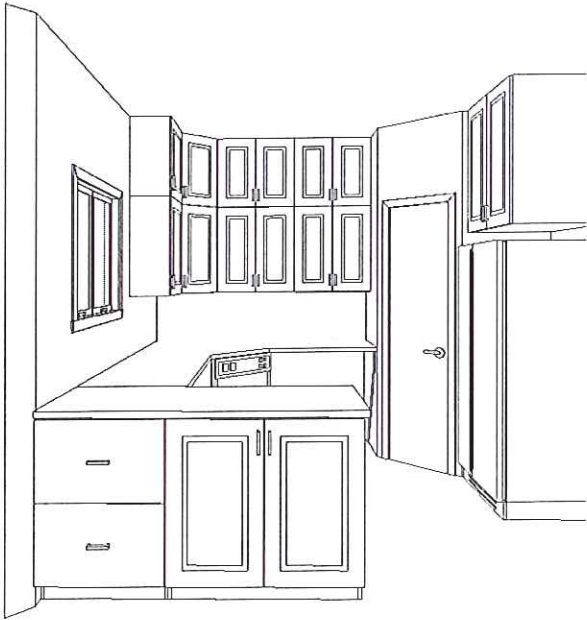
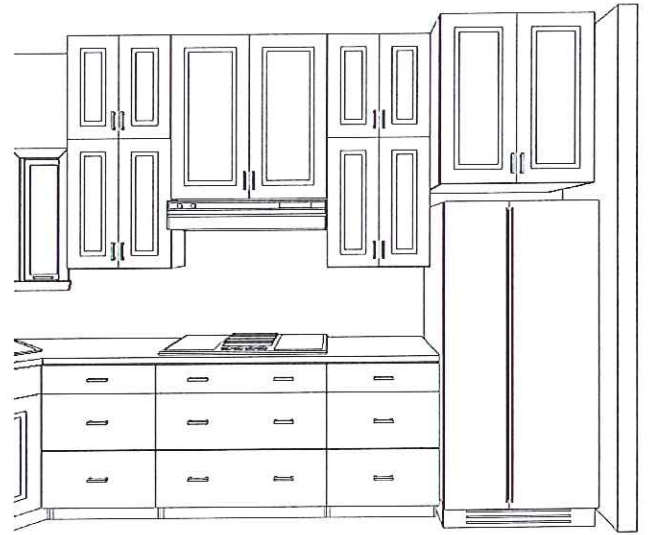
Designed :11/16/2010
Printed: 3/28/2011



Note: This drawing is an artistic interpretation of the general appearance of the design. It is not meant to be an exact rendition.



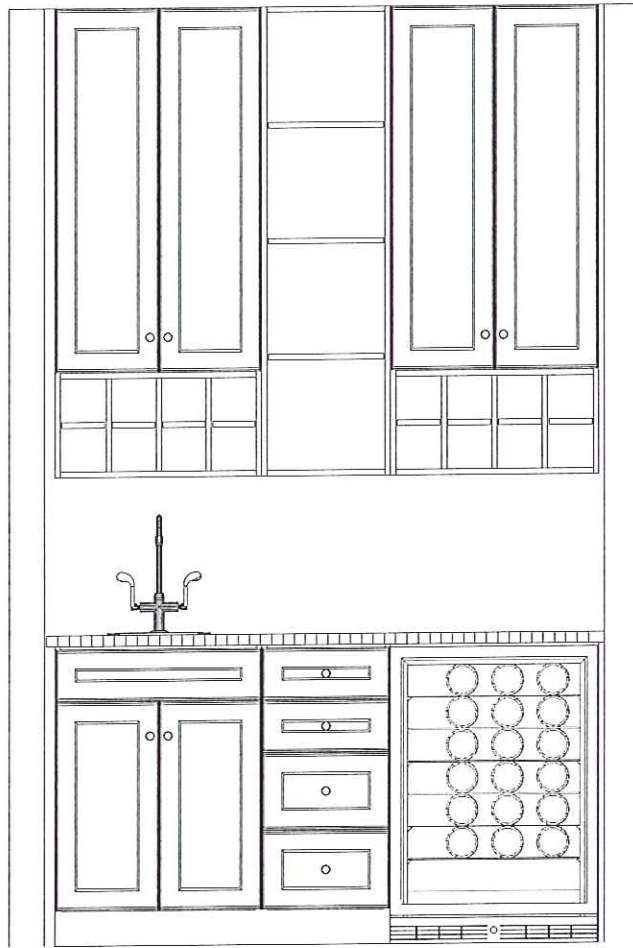
Designed :11/16/2010
Printed: 3/28/2011



Note: This drawing is an artistic interpretation of the general appearance of the design. It is not meant to be an exact rendition.



Designed : 11/17/2011
Printed: 11/17/2011



Note: This drawing is an artistic interpretation of the general appearance of the design. It is not meant to be an exact rendition.



Designed: 11/17/2011
Printed: 11/17/2011

Toilet and Bath Accessories

Fina™ Technical Specification

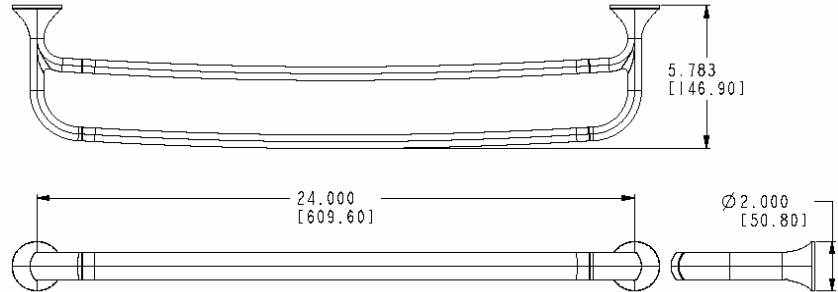
Double Towel Bar

YB9222

Stock Numbers:

- q YB9222BN – 24" Double Towel Bar
Brushed Nickel Finish
- q YB9222CH – 24" Double Towel Bar
Chrome Finish

Dimensions:



Materials:

Double Towel bar posts are constructed of zinc. Bars are constructed of aluminum.

Installation Instructions:

1. Position the mounting template on the wall in the desired location. Using a level, align the template and tape it to the wall.
2. Remove each mounting post from the body by loosening the setscrew.
3. Place each mounting post on the template with notch facing down.
4. Mark the 2 large hole locations of each mounting bracket.
5. Attach each mounting bracket to the wall, using the wall anchors provided.
6. Mount each base on the corresponding mounting bracket. Check and make sure that the base set screw hole(s) are facing down. Assemble a set screw to each base. Use the allen wrench included in hardware kit to tighten each set screw and secure the assembly to the mounting bracket(s).
7. Tighten all 4 screws. Do not over tighten.
8. Assemble the Towel bar and posts.
9. While assembled, Position each end post with the setscrew down and place over mounting post. Tighten the setscrew at the bottom of each base.

Cleaning Instructions:

To preserve the fine finish of this product, clean only with a soft damp cloth. Dry well. Do not use commercial or abrasive cleaners.

Stock Number: _____ Double Towel Bar
By CSI Bath Furnishings



25300 AL MOEN DRIVE • NORTH OLMSTED, OH 44070
CORPORATE HEADQUARTERS: (800) 321-8809 • FAX: (800) 848-6636
INTERNATIONAL: (440) 962-2000 • FAX: (440) 962-2726
CUSTOMER SERVICE (USA): 800-882-0116 • FAX: (888) 379-2720
WWW.CSI.MOEN.COM

©Copyright Creative Specialties International

Literature #BA1454



Eva™ Technical Specification

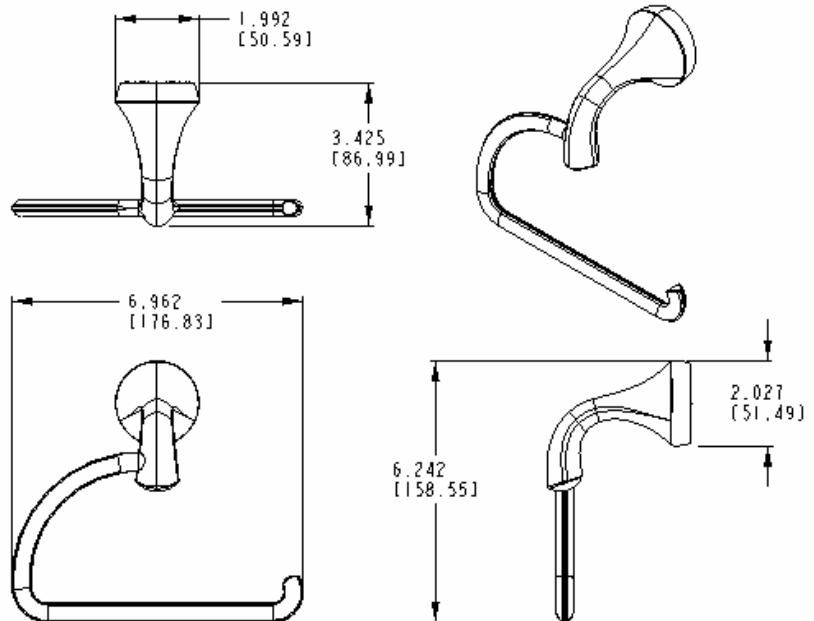
Paper Holder

YB2808

Stock Numbers:

- q **YB2808BN – Pivoting Paper Holder**
Brushed Nickel Finish
- q **YB2808CH – Pivoting Paper Holder**
Chrome Finish
- q **YB2808ORB – Pivoting Paper Holder**
Oil Rubbed Bronze Finish

Dimensions:



Materials:

Paper Holder is constructed of zinc.

Installation Instructions:

This product features the Pro+Fit Installation Mounting System. If you do not have the Pro+Fit Installation Template please use the following instructions. (Note: only one hole is required per mounting post.)

1. Mark on the wall where you want to install the product.
2. Using 1/4" drill bit, drill one pilot hole for the post.
3. Position mounting post to wall by inserting wall anchor into pilot hole and pressing firmly.
4. Make sure that locking tab on mounting post is facing down (6 o'clock).
5. Tighten wall anchor screw while holding mounting post firmly in place. DO NOT over tighten (6 –8 full turns will secure the anchor).
6. Attach post by pressing firmly to mounting post until it clicks. (The square opening at the base of the post must be facing down to match-up with locking tab.)

If you are mounting any parts into a hard surface snap off the anti-rotation fins on the back of the mounting post.

Cleaning Instructions:

To preserve the fine finish of this product, clean only with a soft damp cloth. Dry well. Do not use commercial or abrasive cleaners.

Stock Number: _____ **Paper Holder**
By Creative Specialties



25300 AL MOEN DRIVE • NORTH OLMS TED, OH 44070
CORPORATE HEADQUARTERS: (800) 321-8809 • FAX: (800) 848-6636
INTERNATIONAL: (440) 962-2000 • FAX: (440) 962-2726
CUSTOMER SERVICE (USA): 800-882-0116 • FAX: (888) 379-2720
WWW.CSI.MOEN.COM

©Copyright Creative Specialties International 2006

Literature #BA1345



Eva™ Technical Specification

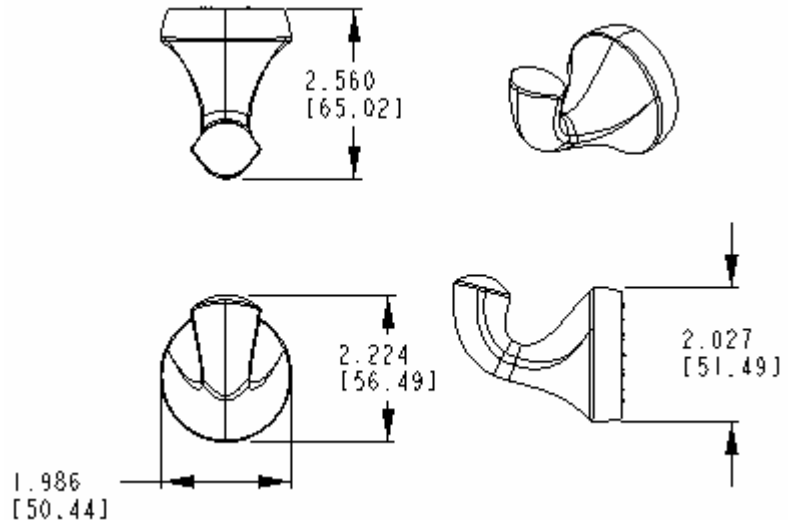
Robe Hook

YB2803

Stock Numbers:

- q **YB2803BN – Robe Hook**
Brushed Nickel Finish
- q **YB2803CH – Robe Hook**
Chrome Finish
- q **YB2803ORB – Robe Hook**
Oil Rubbed Bronze Finish

Dimensions:



Materials:

Robe Hook is constructed of zinc.

Installation Instructions:

This product features the Pro+Fit Installation Mounting System. If you do not have the Pro+Fit Installation Template please use the following instructions. (Note: only one hole is required per mounting post.)

1. Mark on the wall where you want to install the product.
2. Using 1/4" drill bit, drill one pilot hole for the post.
3. Position mounting post to wall by inserting wall anchor into pilot hole and pressing firmly.
4. Make sure that locking tab on mounting post is facing down (6 o'clock).
5. Tighten wall anchor screw while holding mounting post firmly in place. DO NOT over tighten (6 –8 full turns will secure the anchor).
6. Attach post by pressing firmly to mounting post until it clicks. (The square opening at the base of the post must be facing down to match-up with locking tab.)

If you are mounting any parts into a hard surface snap off the anti-rotation fins on the back of the mounting post.

Cleaning Instructions:

To preserve the fine finish of this product, clean only with a soft damp cloth. Dry well. Do not use commercial or abrasive cleaners.

Stock Number: _____ **Robe Hook**
By Creative Specialties



25300 AL MOEN DRIVE • NORTH OLMSTED, OH 44070
CORPORATE HEADQUARTERS: (800) 321-8809 • FAX: (800) 848-6636
INTERNATIONAL: (440) 962-2000 • FAX: (440) 962-2726
CUSTOMER SERVICE (USA): 800-882-0116 • FAX: (888) 379-2720
WWW.CSI.MOEN.COM

©Copyright Creative Specialties International 2006

Literature #BA1344



Plumbing Fixtures for the Units



Buy it for looks. Buy it for life.®

Specifications

FAUCET DESCRIPTION

- Metal construction with various finishes identified by suffix
- 1/2" IPS connections

OPERATION

- Lever style handles
- Maximum handle rotation angle is 90° to full on for either handle
- Hot side counterclockwise to open (clockwise to close)
- Cold side clockwise to open (counterclockwise to close)


FLOW

- Flow is limited to 1.5 gpm max (5.7L/min) at 60 psi, for products made before October 2008 flow is limited to 2.2 gpm max (8.3 L/min)

CARTRIDGE

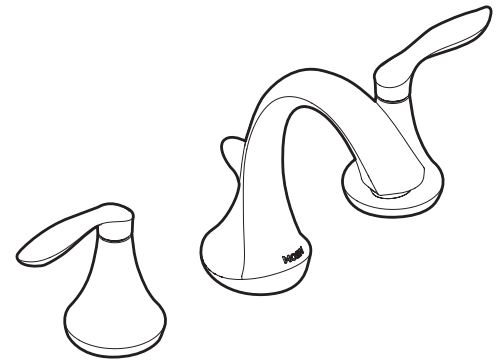
- 1224 cartridge design
- Nonmetallic, nonferrous and stainless steel material

STANDARDS

- Third party certified to WaterSense,® CSA B125, ASME A112.18.1M, ANSI A117.1 and all applicable requirements referenced therein
- Certified to ANSI/NSF 61/9
- Complies with California Proposition 65 and with the Federal Safe Drinking Water Act
- **ADA**  for lever handle

WARRANTY

- Lifetime limited warranty against leaks, drips and finish defects to the original consumer purchaser
- 5 year warranty if used in commercial installations

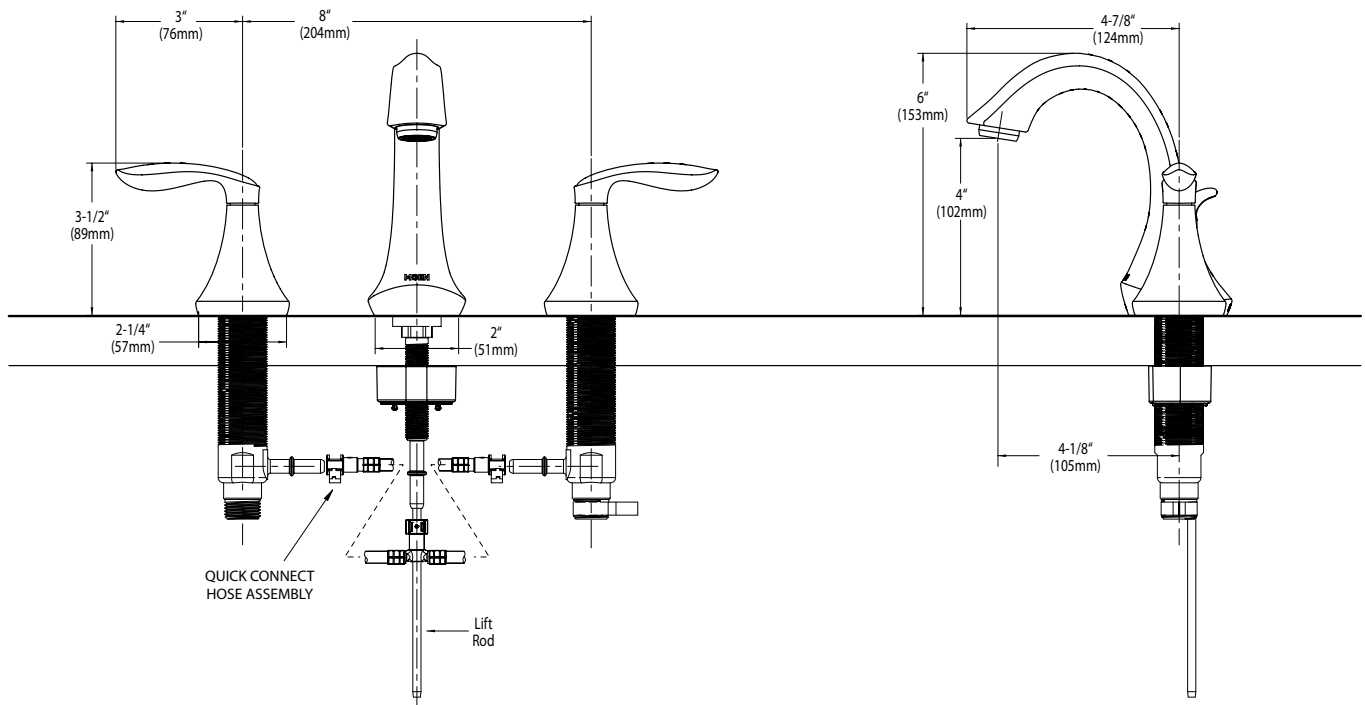


EVA™ Two Handle Widespread Lavatory Faucet

Models: T6420 series

Valve: 9000, 69000

NOTE: THIS FAUCET IS DESIGNED TO BE INSTALLED THRU 3 HOLES, 1-1/8" MIN. DIA.



CRITICAL DIMENSIONS

(DO NOT SCALE)



Buy it for looks. Buy it for life.®

Specifications

DESCRIPTION

- Metal construction with various finishes identified by suffix
- Includes showerhead, arm, flange and diverter spout

OPERATION

- Handle operates counterclockwise through a 270° arc with off at 6 o'clock and maximum hot at the 9 o'clock position. Shut off in clockwise direction
- Adjustable temperature limit stop to control maximum hot water temperature
- Pressure balancing mechanism maintains selected discharge temperature to $\pm 3^\circ$

FLOW

- Showerhead is limited to 2.5 gpm (9.5 L/min) at 80 psi
- EP suffix models are limited to 1.75 gpm (6.6 L/min) at 80 psi
- NH suffix models contain no showerhead

CARTRIDGE

- 1222 cartridge design
- Nonmetallic/nonferrous and stainless steel materials
- Accommodates back to back installations

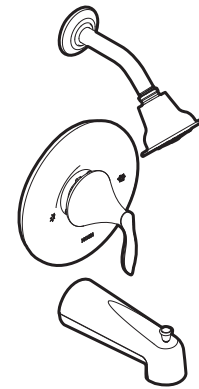
STANDARDS

- Third party certified to meet ASME A112.18.1/CSA B125.1 and all applicable requirements referenced therein
- EP suffix models are IAPMO Green listed and third party certified to WaterSense®

- **ADA** for lever handle

WARRANTY

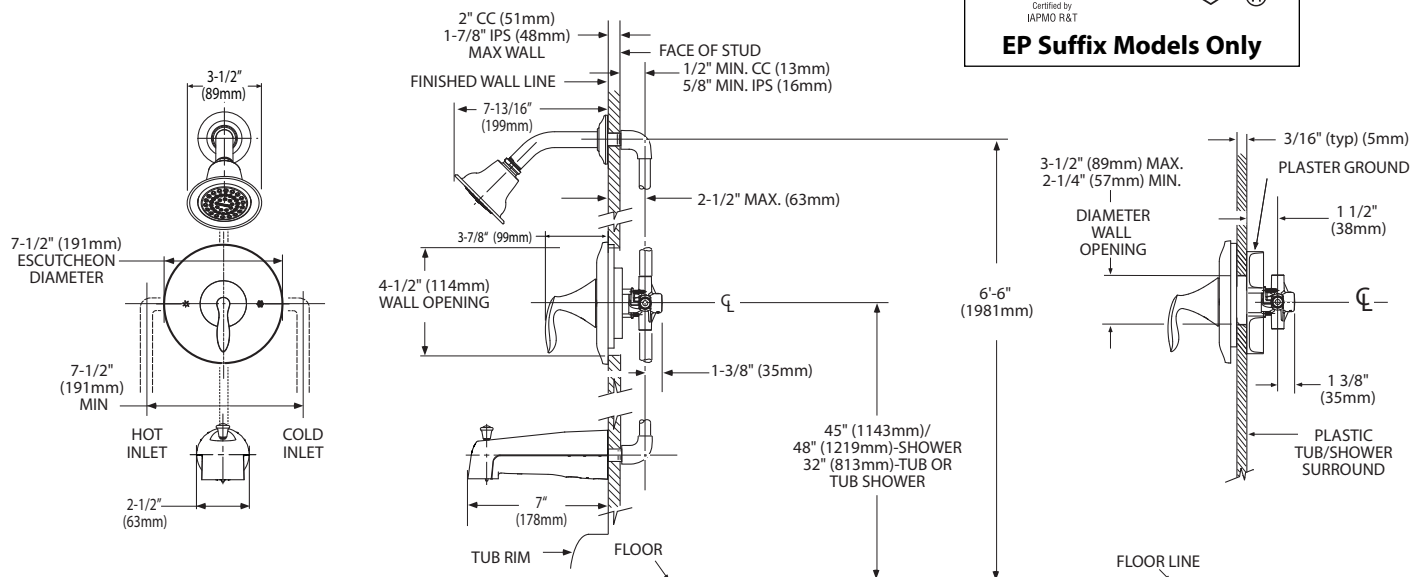
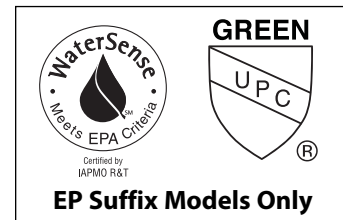
- Lifetime limited warranty against leaks, drips and finish defects to the original consumer purchaser
- 5 year warranty if used in commercial installations



EVA™ POSI-TEMP® Single-Handle Tub/Shower Trim Kit

- Models:** T2131 series - valve trim only
 T62131 (Bulk Packed 12 per carton)
 T2132 series - shower trim only
 T62132 (Bulk Packed 12 per carton)
 T2133 series - tub/shower trim
 T62133 (Bulk Packed 12 per carton)

- Valves:** 62300 series
 2500 series



THICK WALL APPLICATION

THIN WALL APPLICATION

CRITICAL DIMENSIONS

(DO NOT SCALE)



TSEA62™ one-piece

included in unit 305
ONLY (separate
tub and shower in
units 201 and 204)

60" x 31" x 74" | 1524 x 787 x 1880 mm



Codes/Standards Applicable

- ANSI Z124.1.2
- CSA B45 Series

Whirlpool Tub Showers:

- UL1795
- ASME A112.19.7
- CSA C22.2 No. 218.3-93
- CSA B45.10

STANDARD FEATURE(S)

Built-in shelf
Grab bar

PLUMBER FEATURE(S)

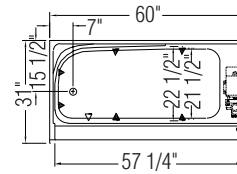
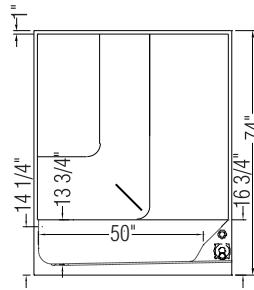
Right or left-hand drain, specify when ordering
One-piece installation

COMMON OPTIONS

Metal trim kit for Whirlpool system
[One chromatherapy light](#)
Waste and overflow
Water heater
White foam cushion

MASSAGE SYSTEM(S)

[Whirlpool](#)



- (▲) : Indicates Whirlpool jets positioning
- (△) : Indicates suction positioning

AQUALYN COUNTERTOP SINK

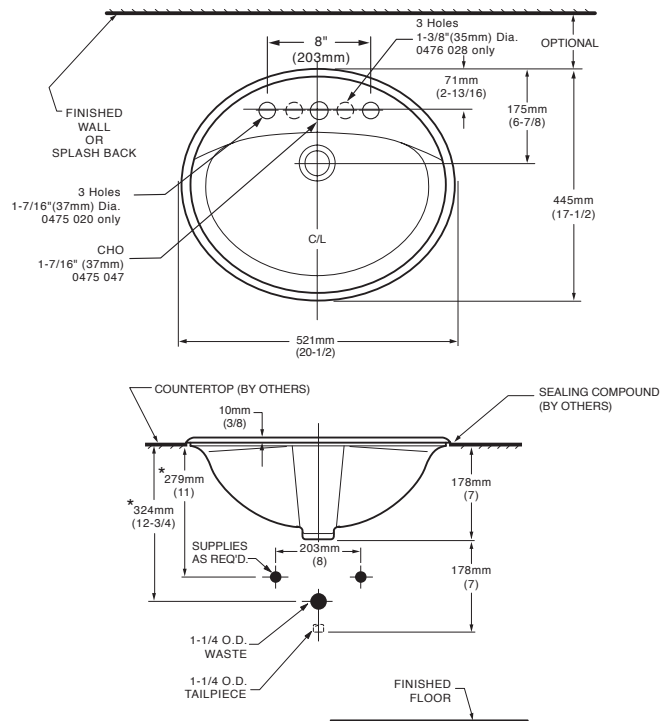
- Vitreous china
- Self-rimming
- Front overflow
- Supplied with template
- Faucet deck
(Faucet shown not included)



- 0475 020**
Faucet holes on 203mm (8") centres
- 0476 028** (Illustrated)
Faucet holes on 102mm (4") centres
- 0475 047**
Centre hole only

Nominal Dimensions:
521 x 445mm (20-1/2" x 17-1/2")

Bowl sizes:
406mm (16") wide, 254mm (10") front to back, 143mm (5-5/8") deep



COMPLIANCE CERTIFICATIONS –
Meets or exceeds the following Specifications:
• ASME A112.19.2M for Vitreous China Fixtures.
• CAN/CSA B45 Series.

To Be Specified

- Colour:
- Faucet*:
- Faucet Finish:
- Supplies & Stops:
- Trap 1-1/4" (32 mm):

NOTES:

* DIMENSIONS SHOWN FOR LOCATION OF SUPPLIES AND "P" TRAP ARE SUGGESTED. FOR COUNTERTOP CUTOUT AND INSTALLATION INSTRUCTIONS USE TEMPLATE SUPPLIED WITH SINK.
FAUCETS NOT INCLUDED AND MUST BE ORDERED SEPARATELY.
IMPORTANT: Dimensions of fixtures are nominal and may vary within the range of tolerances established by ANSI Standard A112.19.2.
These measurements are subject to change or cancellation. No responsibility is assumed for use of superseded or voided pages.

* See faucet section for additional models available

caroma®

CI/SfB	(74.1)	g3
Date	October 2008	

Supersedes all previous issues

Bondi 270 Easy Height Elongated

2.2.4

**1.6/0.8 gpf (6/3 l) Water Saving Dual Flush High Efficiency Toilet (HET)
Two Piece Ultra Low Flush (ULF) Vitreous China Washdown Toilet**



HIGH EFFICIENCY TOILET
HET



c-UPC®
IAPMO listed for USA & Canada

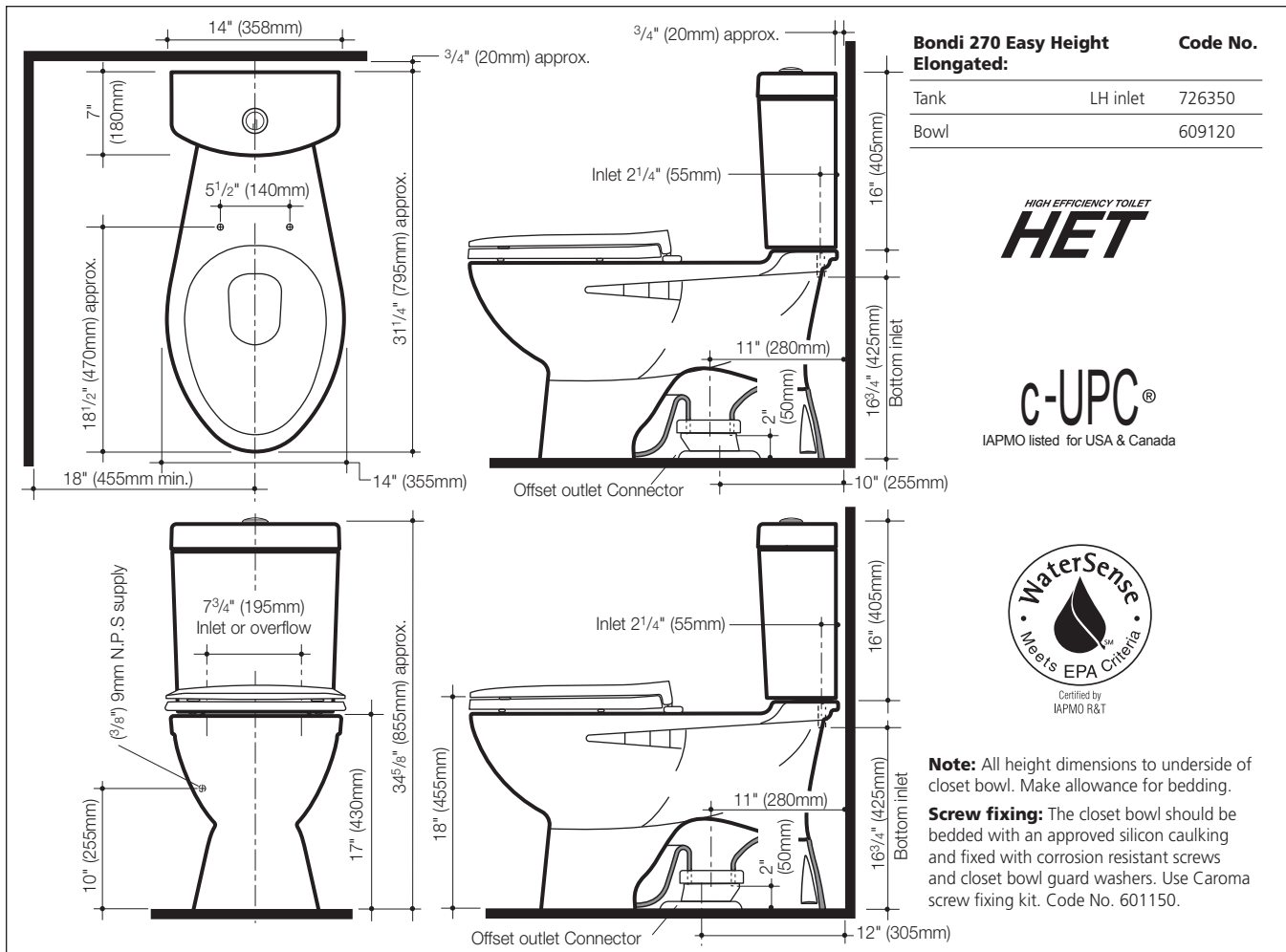
Bondi 270 Easy Height Elongated 1.6/0.8 gpf (6/3 l) Dual Flush HET

Two Piece Ultra Low Flush (ULF) Vitreous China Washdown Toilet



A modern concept close coupled **1.6/0.8 gpf (6/3 l) Bondi 270 Easy Height Elongated** dual flush wash-down toilet installation designed to provide a seat height of between 17" to 19" (430 to 485mm) measured to the top of the toilet seat. The closet bowl has been designed with rough-in of **10" (255mm)** to **12" (305mm)** provided by plastic offset outlet connector option. The tank incorporates the high performance outlet valve which has been specially developed with the 270 Easy Height elongated bowl to ensure optimum reliable flushing performance. Due to the substantial water saving benefits achieved by the 1.6/0.8 gpf (6/3 l) dual flush system, the toilet is suitable for multi-purpose applications where **water conservation** is important.

- Closet bowl:** **270 Easy Height Elongated** 1.6/0.8 gpf (6/3 l) full flush washdown closet bowl with open flushing rim.
- Outlet:** Floor mounted suitable for connection to waste outlet with offset plastic outlet connector for 10" (255mm) to 12" (305mm) rough-in.
- Tank:** **Bondi Tank** – has a free fitting lid and is suitable for domestic and light commercial applications. **Vandal Resistant Conversion Kit** – A simple to install conversion is available for the standard mechanism to lock lid onto the tank, recommended for use in heavy duty commercial areas. Code No. 413276.
- Weight:** 96 lbs (44 kg).
- Water Control Valve:** **Standard Bottom Entry Tank** – available as left hand inlet and incorporates a super quiet water control assembly. Internal overflow only.
- Fixing:** The tank is fixed directly to the closet bowl with a robust base fixing system without the need for wall fixing.
- Seats:** The following Caroma seats are recommended: **Elongated** Code No. 326307, **Elongated Soft Close** Code No. 326221, and **Commercial** Code No. 326813.
- Colors:** White and biscuit.
- Dimensions:** All dimensions are in inches and millimetres and are subject to normal manufacturing variations. Caroma pursues a policy of continuing improvement in design and performance of its products. The right is therefore reserved to vary specifications without notice.





Buy it for looks. Buy it for life.®

Specifications

FAUCET DESCRIPTION

- Metal construction with various finishes identified by suffix
- Hydrolock® quick connect installation
- Pullout spray with 68" braided hose
- 1/2" IPS connections will accept standard ball nose connection for 3/8" tubing

OPERATION

- Lever style handle
- Temperature controlled by 180° arc of handle travel
- Spout receptor rotation is 120°
- Operates with less than 5 lbs. of force
- Operates in stream or spray mode in the pullout or retracted position
- When filling a vessel outside of the sink, the pause feature conveniently stops the flow of water as the wand passes over the counter top


FLOW

- Flow is limited to 2.2 gpm max (8.3 L/min)

CARTRIDGE

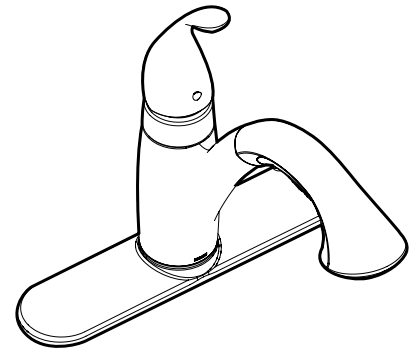
- 1225 cartridge design
- Engineered polymers, non-ferrous and stainless steel materials

STANDARDS

- Designed and manufactured to comply with the requirements of: CSA B-125, ASME A112.18.1M, NSF 61 Section 9, California Proposition 65, ANSI A117.1, ADA
- The backflow protection system in this device consists of two independently operating check valves, a primary and a secondary which prevent backflow.
- **ADA**  for lever handle

WARRANTY

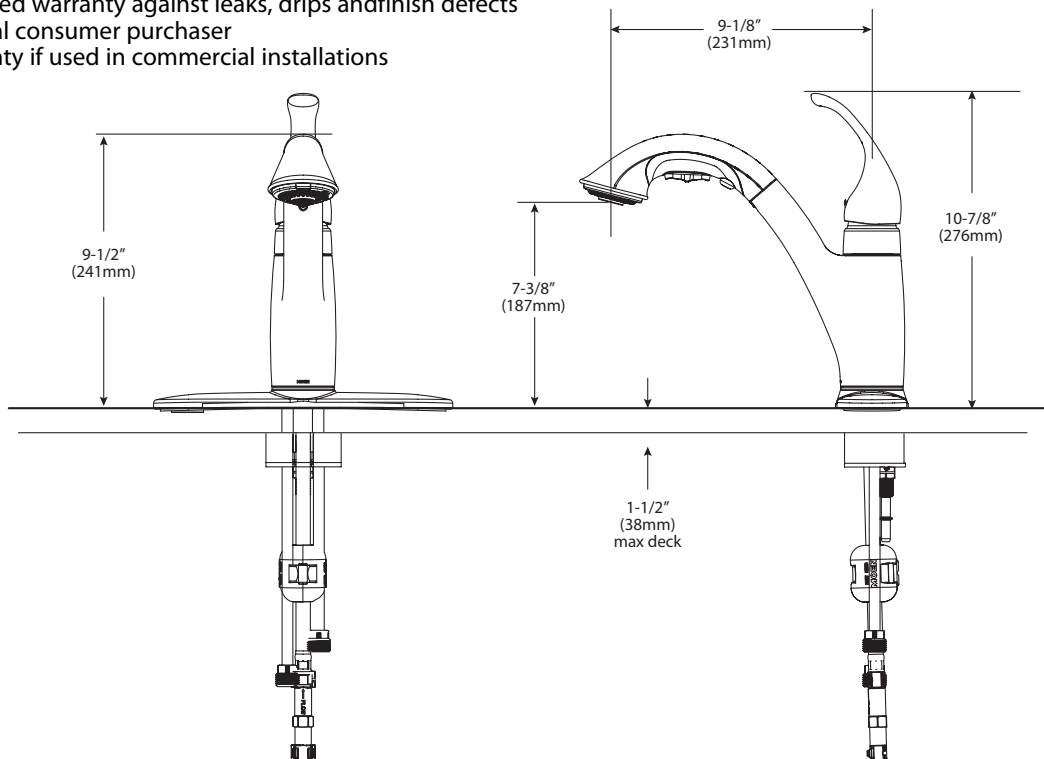
- Lifetime limited warranty against leaks, drips and finish defects to the original consumer purchaser
- 5 year warranty if used in commercial installations



Camerist™
Single Control Kitchen Faucet
w/Pullout Spray

Models: 7545 series

NOTE: DESIGNED TO INSTALL
THRU 1 OR 3 HOLES 1-1/4" (32mm) MIN. DIA.



CRITICAL DIMENSIONS

(DO NOT SCALE)



Optional Accessories



DT1614



MB1610



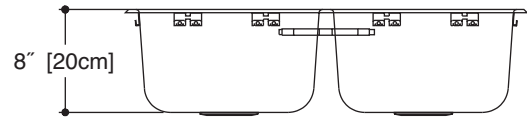
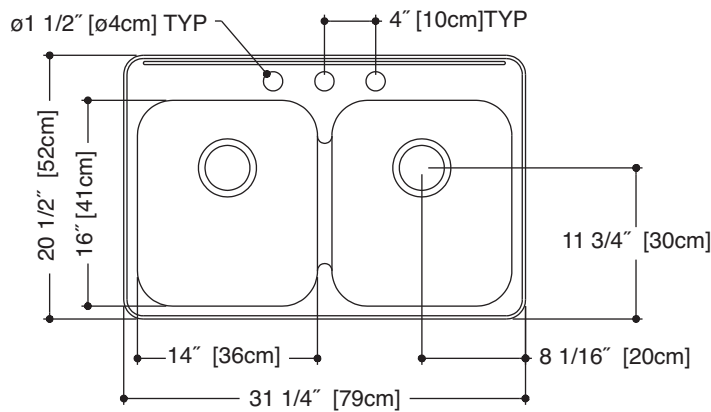
CT11W



DBR10S



BG10S



QDL2031/8 SPECIFICATION

Model QDL2031/8 is a double (two equal size) bowl ledgeback sink with Spillway manufactured by Franke Kindred Canada Limited from 20 gauge, 18-8 stainless steel. Product has a bright mirror finished rim and satin finished bowls. Sink is fully undercoated. Basket strainer waste fittings (3 1/2", 89 mm) and installation kit are included. Sink is backed with a limited buyer lifetime warranty.

- O.D. 20 1/2" x 31 1/4" x 8" (52 x 79 x 20 cm)
- **Recommended for minimum 33" cabinet**

QDL2031/8/3 3 hole - 1 1/2" diameter, 4" center-to-center FUN# 101.0045.182

QDL2031/8/4 4 hole - 4th hole on right hand side FUN#101.0045.183

QDL2031/8/1 1 hole on center FUN# 101.0045.180

Pacific Line™ PLREA6032 5 ft

60" x 32" x 25" | 1524 x 813 x 635 mm



**Codes/Standards
Applicable**

- ANSI Z124.1.2
- CSA B45 Series

Whirlpool Bathtubs:

- UL1795
- ASME A112.19.7
- CSA C22.2 No. 218.2
- CSA B45.10

STANDARD FEATURE(S)

- Textured bottom
- Integrated apron with system access panel when equipped with massage system
- Armrests

PLUMBER FEATURE(S)

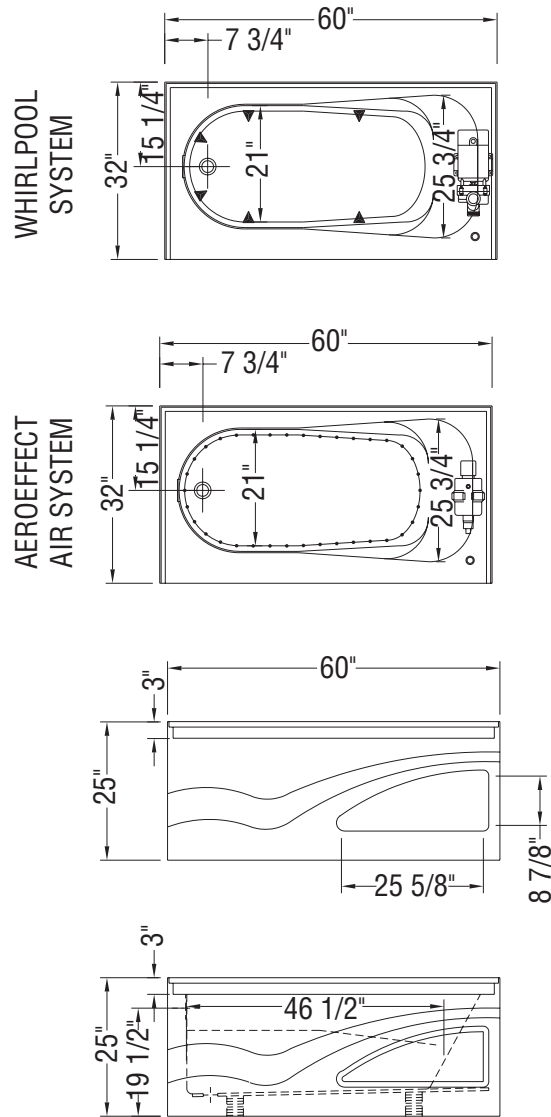
- Alcove installation with integrated double tiling flange, right or left-hand drain

COMMON OPTIONS

- Flexible main hose 9 ft for air push control
- Metal trim kit for Aeroeffect air push control
- Metal trim kit for Whirlpool
- [One chromatherapy light](#)
- Water heater assembly (factory installed)
- White foam cushion

MASSAGE SYSTEM(S)

- [Aeroeffect with air push control](#)
- [Combined Whirlpool and Aeroeffect with air push control](#)
- [Whirlpool](#)



- (▲): Indicates Whirlpool jets positioning
- (●): Indicates Aeroeffect airjets positioning
- (△): Indicates suction positioning

All dimensions are approximate and subject to change without prior notice.
Please refer to installation guide before installing unit.

included in units
201 and 204

GELCOAT



Model PA17

Model PA17
(Left or Right-hand Plumbing)

Length: 42" (1076 mm)
Width: 36 5/8" (930 mm)
Height: 76" (1930 mm)

Shipping Weight: 120 lbs. (54 Kg)

Materials: Gelcoat finish reinforced with fibreglass.

This shower fits into a 42" opening and offers a large interior showering space with two toiletry shelves.

Standard Features:

- Easy to clean high gloss surface
- Chip and mar resistant

Colours:

- Standard: White, Almond (Bone) or Biscuit
- Optional: Kohler Colours

Other Configurations:

- 2-piece knockdown (KD)

All products manufactured by Hytec are covered by a comprehensive five-year limited warranty from the date of sale to the original owner. See the Hytec Bathing Fixtures List Price Book for further details.

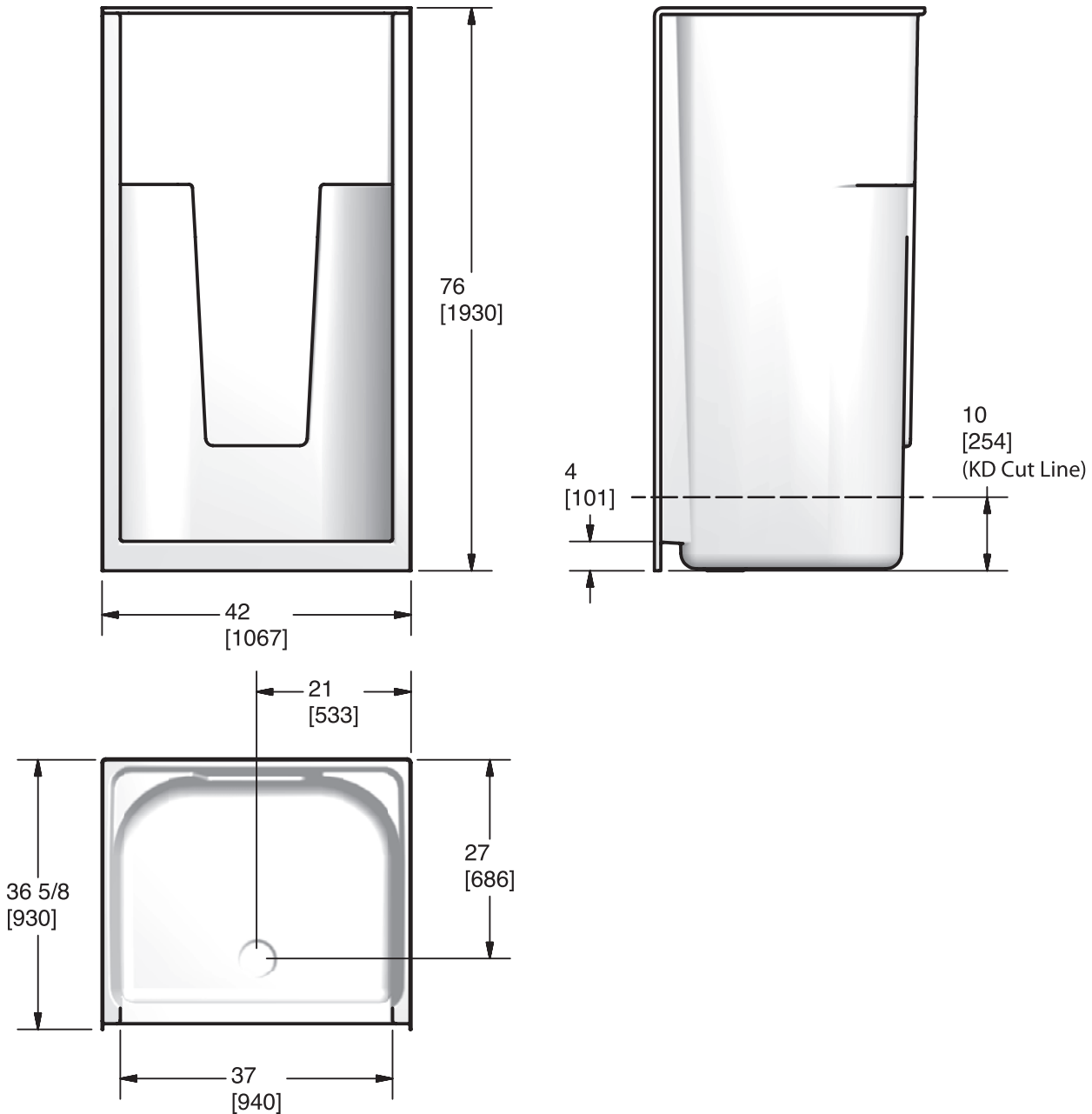
Hytec Plumbing Products

(Division of Kohler Canada Co.)
4150 Spallumcheen Dr, Armstrong BC V0E 1B6
Ph. (800) 871-8311 (250) 546-3196 Fax (250) 546-3170



Model PA17

GELCOAT



Measurement tolerances ± 1/4" (6.3 mm)

All bathing fixtures comply with the applicable Canadian Standards.

For installation procedures, please refer to instructions included with each unit.

This sheet approximately describes products and equipment manufactured or supplied by Hytec Plumbing Products. Because of ongoing efforts to improve both design and quality, products and equipment actually furnished may differ without prior notice.



Hytec Plumbing Products

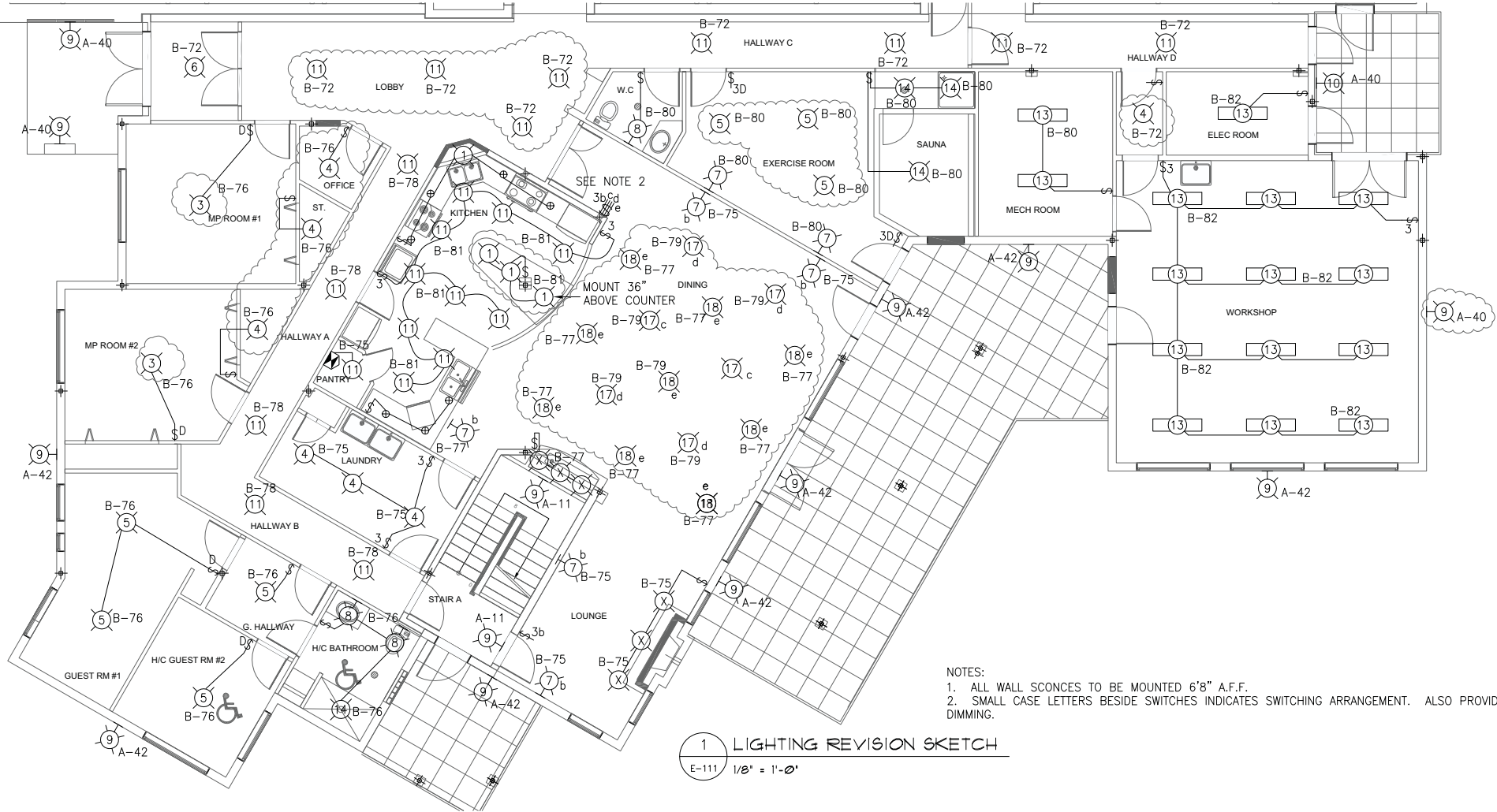
(Division of Kohler Canada Co.)

4150 Spallumcheen Dr, Armstrong BC V0E 1B6

Ph. (800) 871-8311 (250) 546-3196 Fax (250) 546-3170

Common Area Lighting

AVENUE J SOUT



NOTES:
 1. ALL WALL SCNCES TO BE MOUNTED 6'8" A.F.F.
 2. SMALL CASE LETTERS BESIDE SWITCHES INDICATES SWITCHING ARRANGEMENT. ALSO PROVIDE DIMMING.

1 LIGHTING REVISION SKETCH
 E-111 1/8" = 1'-0"

PWA ENGINEERING LTD.
 CONSULTING ELECTRICAL ENGINEERS
 #102 - 701 CYNTHIA STREET
 SASKATOON, SK S7L 6B7
 TELEPHONE • (306) 244-6371
 FAX • (306) 664-2771

PROJECT WOLF WILLOW SENIOR'S CO-HOUSING	
DRAWING LIGHT FIXTURE REVISION SKETCH	Project No: 6932 Drawn: MT File: 6932_EI Checked: CC Date: DEC 6, 2011 Scale: 1/8"=1'0" DWG. No. SK1(E-111)R1

1 - Pendant over
island CH kitchen

604-420-2440
info@russell-lighting.com

search by item #

Search

[home](#)

[distribution and warranty](#)

[specials](#)

[2010/11 catalogue](#)

[about us](#)

product search

[All Collections >>](#)

[Chandeliers](#)

[Pendants](#)

[Mini Pendants](#)

[Ceiling Mounts >>](#)

[Wall Mounts](#)

[Clip Lights >>](#)

[Vanities >>](#)

[Island Lights](#)

[Outdoor Lighting](#)

[Bollards](#)

[Sign Lighting](#)

[Compact Fluorescents](#)

Advanced Search

Looking for something
specific?

Submit

you are here: [home](#) >> [Mini Pendants](#) >> [293/TABBY/ST](#)

293/TABBY/ST

Create Specification Sheet

Specifications

Item#:

293/TABBY/ST

Fixture Type:

Mini Pendant

Lamping

1 x 40W G9

Glass Number

035930 Tabby

Options

Lamping Options

Finish Options

This fixture is paintable

Glass Option: N/A

Dimensions

Height 45"

Diameter 3 1/2"

Extension N/A

Additional Information

Rods 2 x 6 inches and 2
x 12 inches

Comes with a 90 degree
swivel

Lamps are not included



View high resolution image

© 2010 Russell Industries Ltd. All rights Reserved



2 – U/C – under cabinet lighting
Common House and unit kitchens



20W Triangular Halogen

Designed for under-cabinet installation, its contemporary style will be sure to complement your decor.

- + Triangle made from high-quality materials
- + Easy to install with only 1 screw
- + Average life of 4,000 hrs

 Includes a 20W bulb (No. 3241 Premium G4 15-pin/20W bulb) and 70" Quick-Connect cable with plug to connect halogen lights and transformer									
 <p> Pack Size: 20 Net Wt: 100 gms 1 kg in 100 100 kg in 1000 </p>	<p>Transformer (Required)</p> <ul style="list-style-type: none"> 7850 60W (p. 3-4) or 7850 60W RR (p. 3-4) 77120 120W Commercial (p. 3-4) 								
<p>Installation Locations:</p> <p>Kitchen Cabinets, Showcases, Store Displays</p>	<table border="1"> <thead> <tr> <th>Product</th> <th>Color/Finish</th> </tr> </thead> <tbody> <tr> <td>22280</td> <td>nickel</td> </tr> <tr> <td>22281</td> <td>antique copper</td> </tr> <tr> <td>222170</td> <td>stainless</td> </tr> </tbody> </table>	Product	Color/Finish	22280	nickel	22281	antique copper	222170	stainless
Product	Color/Finish								
22280	nickel								
22281	antique copper								
222170	stainless								

3 - ceiling mounted fixture
CH multi-purpose rooms

604-420-2440
info@russell-lighting.com

search by item #

Search

[home](#)

[distribution and warranty](#)

[specials](#)

[2010/11 catalogue](#)

[about us](#)

product search

[All Collections >>](#)

[Chandeliers](#)

[Pendants](#)

[Mini Pendants](#)

[Ceiling Mounts >>](#)

[Wall Mounts](#)

[Clip Lights >>](#)

[Vanities >>](#)

[Island Lights](#)

[Outdoor Lighting](#)

[Bollards](#)

[Sign Lighting](#)

[Compact Fluorescents](#)

Advanced Search

Looking for something specific?

Submit

you are here: [home](#) >> [Search by Item Number](#) >> [341-716](#) >> [341-716](#)

341-716

[Create Specification Sheet](#)

Specifications

Item#:

341-716

Fixture Type:

Clip Light Ceiling Mount

Lamping

3 x 60A

Glass Number

033041 Faux

Options

Lamping Options

1 x PL26 elec.

2 x PL13 mag.

2 x PL13 elec.

2 x PL26 elec.

3 x PL13 mag.

CFL Spiral and GU24

Adapter Compatible

Finish Options This

fixture is not paintable

Glass Option: N/A

Dimensions

Height 5"

Diameter 16"

Extension N/A

Additional Information

Lamps are not included



[View high resolution image](#)

© 2010 Russell Industries Ltd. All rights Reserved

4 - ceiling mounted
CH closets

604-420-2440
info@russell-lighting.com

search by item #

Search

[home](#)

[distribution and warranty](#)

[specials](#)

[2010/11 catalogue](#)

[about us](#)

product search

[All Collections >>](#)

[Chandeliers](#)

[Pendants](#)

[Mini Pendants](#)

[Ceiling Mounts >>](#)

[Wall Mounts](#)

[Clip Lights >>](#)

[Vanities >>](#)

[Island Lights](#)

[Outdoor Lighting](#)

[Bollards](#)

[Sign Lighting](#)

[Compact Fluorescents](#)

Advanced Search

Looking for something specific?

Submit

you are here: [home](#) >> [Search by Item Number](#) >> [319-796](#) >> [319-796](#)

319-796

Create Specification Sheet

Specifications

Item#:

319-796

Fixture Type:

Ceiling Mount

Lamping

1 x 60A

Glass Number

033061 Faux

Options

Lamping Options

CFL Spiral and GU24

Adapter Compatible

13W MAX

Finish Options

This fixture is paintable

Glass Option: N/A

Dimensions

Height 5"

Diameter 8"

Extension N/A

Additional Information

Lamps are not included



View high resolution image

© 2010 Russell Industries Ltd. All rights Reserved

5 - ceiling mounted fixture
CH guest rooms, laundry, exercise room

604-420-2440
info@russell-lighting.com

search by item #

Search

home

distribution and warranty

specials

2010/11 catalogue

about us

product search

All Collections >>

Chandeliers

Pendants

Mini Pendants

Ceiling Mounts >>

Wall Mounts

Clip Lights >>

Vanities >>

Island Lights

Outdoor Lighting

Bollards

Sign Lighting

Compact Fluorescents

Advanced Search

Looking for something specific?

Submit

you are here: home >> Search by Item Number >> 331-712 >> 331-712

331-712

Create Specification Sheet

Specifications

Item#:

331-712

Fixture Type:

Clip Light Ceiling Mount

Lamping

2 x 60A

Glass Number

033031 Faux

Options

Lamping Options

1 x PL13 mag.

2 x PL13 mag.

CFL Spiral and GU24

Adapter Compatible

Finish Options

This fixture is not paintable

Glass Option: N/A

Dimensions

Height 4"

Diameter 12"

Extension N/A

Additional Information

Lamps are not included



View high resolution image

© 2010 Russell Industries Ltd. All rights Reserved

6 - ceiling mounted pendant
CH entrance lobby

604-420-2440
info@russell-lighting.com

search by item #

Search

[home](#)

[distribution and warranty](#)

[specials](#)

[2010/11 catalogue](#)

[about us](#)

product search

[All Collections >>](#)

[Chandeliers](#)

[Pendants](#)

[Mini Pendants](#)

[Ceiling Mounts >>](#)

[Wall Mounts](#)

[Clip Lights >>](#)

[Vanities >>](#)

[Island Lights](#)

[Outdoor Lighting](#)

[Bollards](#)

[Sign Lighting](#)

[Compact Fluorescents](#)

Advanced Search

Looking for something specific?

Submit

you are here: [home](#) >> [Search by Item Number](#) >> [190-713/bch](#) >> [190-713/BCH](#)

190-713/BCH

Create Specification Sheet

Specifications

Item#:

190-713/BCH

Fixture Type:

Chandelier Pendant

Lamping

3 x 100A

Glass Number

031900 gloss white

Options

Lamping Options

CFL Spiral and GU24
Adapter Compatible

Finish Options

This fixture is not paintable

Glass Option: N/A

Dimensions

Height 21"

Diameter 16"

Extension N/A

Additional Information

Lamps are not included



View high resolution image

© 2010 Russell Industries Ltd. All rights Reserved

7 - wall sconce, lounge, CH
dining room, exercise room

604-420-2440
info@russell-lighting.com

search by item #

Search

[home](#)

[distribution and warranty](#)

[specials](#)

[2010/11 catalogue](#)

[about us](#)

product search

[All Collections >>](#)

[Chandeliers](#)

[Pendants](#)

[Mini Pendants](#)

[Ceiling Mounts >>](#)

[Wall Mounts](#)

[Clip Lights >>](#)

[Vanities >>](#)

[Island Lights](#)

[Outdoor Lighting](#)

[Bollards](#)

[Sign Lighting](#)

[Compact Fluorescents](#)

Advanced Search

Looking for something
specific?

Submit

you are here: [home](#) >> [Search by Item Number](#) >> [748-702/bch](#) >> [748-702/BCH](#)

748-702/BCH

[Create Specification Sheet](#)

Specifications

Item#:

748-702/BCH

Fixture Type:

Vanity

Lamping

2 x 100A

Glass Number

030480 Opal

Options

Lamping Options

CFL Spiral and GU24
Adapter Compatible

Finish Options

This fixture is not paintable

Glass Option: N/A

Dimensions

Height 12"

Diameter 12"

Extension 5 1/2"

Additional Information

Lamps are not included



[View high resolution image](#)

© 2010 Russell Industries Ltd. All rights Reserved

8 - wall sconce
All bathrooms

604-420-2440
info@russell-lighting.com

search by item #

Search

[home](#)

[distribution and warranty](#)

[specials](#)

[2010/11 catalogue](#)

[about us](#)

product search

[All Collections >>](#)

[Chandeliers](#)

[Pendants](#)

[Mini Pendants](#)

[Ceiling Mounts >>](#)

[Wall Mounts](#)

[Clip Lights >>](#)

[Vanities >>](#)

[Island Lights](#)

[Outdoor Lighting](#)

[Bollards](#)

[Sign Lighting](#)

[Compact Fluorescents](#)

Advanced Search

Looking for something specific?

Submit

you are here: [home](#) >> [Search by Item Number](#) >> [767-724H](#) >> [767-724H](#)

767-724H

Create Specification Sheet

Specifications

Item#:

767-724H

Fixture Type:

Vanity

Lamping

2 x 100T3 halogen
(78mm)

Glass Number

030673 linen
bottom gl# 030673/B

Options

Lamping Options

2 x PL13 mag.

2 x PL 13 elec.

2 x PL26 elec.

Finish Options

This fixture is not paintable

Glass Option: N/A

Dimensions

Height 6 3/4"

Diameter 24"

Extension 4"

Additional Information

Lamps are not included



View high resolution image

© 2010 Russell Industries Ltd. All rights Reserved

9 - ceiling or wall mounted
all exterior lighting and enclosed
walkways

604-420-2440
info@russell-lighting.com

search by item #

Search

[home](#)

[distribution and warranty](#)

[specials](#)

[2010/11 catalogue](#)

[about us](#)

product search

[All Collections >>](#)

[Chandeliers](#)

[Pendants](#)

[Mini Pendants](#)

[Ceiling Mounts >>](#)

[Wall Mounts](#)

[Clip Lights >>](#)

[Vanities >>](#)

[Island Lights](#)

[Outdoor Lighting](#)

[Bollards](#)

[Sign Lighting](#)

[Compact Fluorescents](#)

Advanced Search

Looking for something
specific?

Submit

you are here: [home](#) >> [Search by Item Number](#) >> [704hgw](#) >> [704HGW](#)

704HGW

[Create Specification Sheet](#)

Specifications

Item#:

704HGW

Fixture Type:

Outdoor Lighting

Lamping

1 x 100A

Glass Number

034112

Options

Lamping Options

CF 704HGW1x13E

CF 704HGW1x26E

CF 704HGW1x32E

CF 704HGW2x13E

CF 704HGW2x26E

CF 704HGW1x13HPF

CF 704HGW2x13HPF

CF 704HGW1x13M

CF 704HGW2x13M

CFL Spiral and GU24

Adapter Compatible

13W MAX

Finish OptionsThis

fixture is not paintable

Glass Option: N/A

Dimensions

Diameter 9 1/2"

Extension 5"

Additional Information

Lamps are not included

Standard Features: **Cast**

Marine

Standard features

die cast aluminum body

rated for wet location

wall or ceiling mount

not rated as vapour proof

not rated for shower stall
application

glossary

HG hooded guard

E elec. Ballast

HPF High Power Factor

M Magnetic Ballast



[View high resolution image](#)

FEATURES & SPECIFICATIONS

INTENDED USE — Outdoor storage areas, warehouse and factory perimeters and loading docks.

CONSTRUCTION — Rugged, corrosion-resistant, die-cast aluminum. Corrosion-resistant external hardware includes slotted hex-head fasteners.

Finish: Standard finish is electrostatically-applied, oven-cured, dark bronze (DDB) corrosion-resistant polyester powder paint.

OPTICS — Reflector is specular anodized aluminum. Refractor is prismatic borosilicate glass which is sealed and gasketed to inhibit the entrance of outside contaminants.

ELECTRICAL — Electrical components are mounted in hinged front cover that includes primary and secondary electrical disconnect.

Ballast: Low pressure sodium: High reactance, high power factor. High pressure sodium: 70-150W is high reactance, high power factor. Constant wattage autotransformer for 200-400W. Metal halide: 70-150W is high reactance, high power factor and is standard with pulse-start ignitor technology. SCWA not required. Constant wattage autotransformer for 175-400W. Super CWA (pulse start ballast), 88% efficient and EISA legislation compliant, is required for metal halide 151-400W (SCWA option) for US shipments only. CSA, NOM or INTL required for probe start shipments outside of the US. Pulse-start ballast (SCWA) required for 200W, 320W, or 350W. Ballast is 100% factory-tested.

Socket: Porcelain, horizontally oriented, single-ended bayonet base socket for 35W low pressure sodium; medium base socket for 70-150W; and mogul base socket for 175W and above, with copper alloy, nickel-plated screw shell and center contact. UL listed 1500W, 600V.

INSTALLATION — Back housing is separated from front housing, eliminating ballast weight and promoting easy

10 (Wall Pack) - these are on the parking garage at the garage entrances and at the back over the parking in the lane

Catalog Number
Notes
Type



Wall Packs

TWH

METAL HALIDE: 70W - 400W
HIGH PRESSURE SODIUM: 70W - 400W
LOW PRESSURE SODIUM: 35W
8' to 25' Mounting

Specifications

Height: 15-3/4 (40.0)

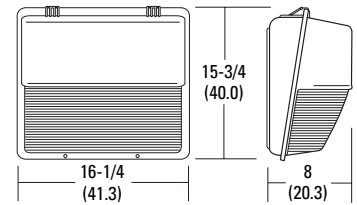
Width: 16-1/4 (41.3)

Depth: 8 (20.3)

*Weight: 29.95 (13.59kg)

All dimensions are inches (centimeters) unless otherwise indicated.

*Weight as configured in example below.



ORDERING INFORMATION

For shortest lead times, configure product using **standard options (shown in bold)**.

Example: TWH 100M TB LPI

TWH	Series	Wattage	Voltage	Ballast	Options	Finish ¹⁵	Lamp ¹⁷
TWH	Low pressure sodium ¹	Metal halide	120	(blank) Magnetic ballast	Shipped installed in fixture		LPI Lamp included L/LP Less lamp
		70M ^{1,3}	208 ⁸	CWI Constant wattage isolated	SF Single fuse (120, 277, 347V)	(blank) Dark bronze	
	35L	100M ¹	240 ⁸	 SCWA Super CWA pulse start ballast Note: For shipments to U.S. territories, SCWA must be specified to comply with EISA.	DF Double fuse (208, 240, 480V)	DNA Natural aluminum	
	High pressure sodium ¹	150M	277		EC Emergency circuit ¹¹	DBL Black	
	70S	175M⁴	347		QRS Quartz restrike ¹¹	DMB Medium bronze	
	100S	200M ⁵	480 ⁸		QRSTD Quartz restrike system with time delay ^{10, 11}	DWH White	
	150S ²	250M⁶	TB⁹		PE Photoelectric cell - button type ³	CR Enhanced corrosion resistant	
	200S	320M ⁵	2305HZ ¹⁰		PER NEMA twist-lock receptacle ¹²	CRT Non-stick protective coating ¹⁵	
	250S	350M ^{4,5}			FS Full shield		
	400S	400M^{6,7}			TP Tamper proof screws		
		Ceramic metal halide			CSA Listed and labeled to comply with Canadian Standards		
		70MHC ^{1,3}			NOM NOM Certified ¹⁰		
		100MHC ¹		INTL Available for MH probe start shipping outside the U.S.			
		150MHC		REGC1 California Title 20 effective 1/1/2010			
				Shipped separately¹³			
				PE1 NEMA twist-lock PE (120V/208V/240V)			
				PE3 NEMA twist-lock PE (347V)			
			PE4 NEMA twist-lock PE (480V)				
			PE7 NEMA twist-lock PE (277V)				
			SC Shooting cap for PER option				
			VG Vandal guard ¹⁴				
			WG Wire guard ¹⁴				

Notes

- Not available with SCWA.
- Operates 55V lamp.
- Not available with 480V.
- These wattages do not comply with California Title 20 regulations.
- Must be ordered with SCWA.
- These wattages require the REGC1 option to be chosen for shipments into California for Title 20 compliance. 250M REGC1 in not available in 347 or 480V.
- Requires T-15, ED or BT28 reduced jacket lamp.
- Must specify CWI for use in Canada.

- Optional multi-tap ballast (120, 208, 240, 277V); in Canada (120, 277, 347V).
- Consult factory for available wattages.
- Max allowable wattage lamp included.
- Photocell not included.
- May be ordered as an accessory.
- Prefix with TWH when ordered as an accessory. Requires field modification.
- See www.lithonia.com/archcolors for additional color options.
- Black finish only.
- Must be specified. L/LP N/A MHC.

11 - Recessed Pot lights CH dining room, kitchen, hallways

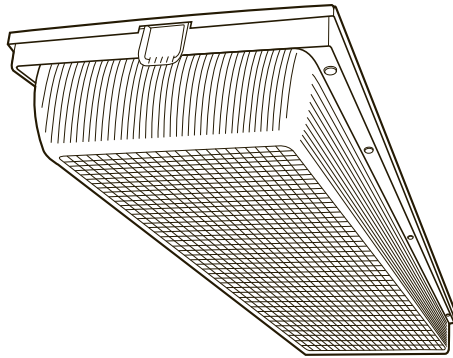
The H270 family recessed housings are energy efficient, Energy Star Qualified, California Title 24 compliant fixtures designed for effective, efficient down lighting using 13 to 26 watt compact fluorescent lamps.

- The H273ICAT1D can use either 26W or 32W lamps and is equipped with a dimming ballast that provides dimmings from 100% to 15%.



12 - Parking Garage

Catalog Number	
Notes	Type



Parking Garage Luminaire

Specifications

Reflectors - Precision formed 95% total reflectance, segmented optics utilizing premium specular aluminum reflectors warranted for 25 years.

Construction - Backplate manufactured from 20 gauge cold rolled steel. Riveted and screwed assembly for rigidity.

- Optional all aluminum construction, specify AL.
- Optional heavy gauge steel backplate. Specify 18GA.

Finish - Premium polyester powder coat finish is standard, utilizing a 7-stage pretreatment process of iron phosphate, a non-chromium sealer and a de-ionized water rinse to provide superior adhesion and corrosion resistance.

Ballasts - All standard ballasts are electronic, energy saving, thermally protected, Class-P, HPF, non-PCB, Sound Rated A, UL/CSA certified where applicable and comply with Ⓢ Federal Ballast Law (Public Law 100-357, 1988). Default ballast configuration is for two-lamp ballast except for one-lamp fixtures.

Electrical - UL listed wire, rated for required temperatures, used throughout. Lamps are secured with rotary locking lamp sockets for ease of relamping and to reduce lamps disconnecting due to vibration or incidental contact. Luminaire is bi-national listed (UL 1598 and CSA C22.2 No. 250.0-00) for damp locations.

Mounting - The luminaire is designed for surface or chain mount.

- Surface conduit entry lens knockouts and rubber gasket is standard.

Lamps - Factory installed lamps are available in various CRI ratings, temperature colors and rated life.

Warranty - Standard 1-year warranty for the fixture. Ballasts carry manufacturer warranties of 3-5 years, depending on the application.

Fixture Series	
FPG4	4'
Lamp Profile/Type	
1 54T5HO	F54T5HO
2 54T5HO	F54T5HO
2 32	F32T8
Reflector/Material	
N1X20	Specular Aluminum
B1X20	Broad Beam
Voltage	
MVOLT	120 - 277V, 60 Hz
HVOLT	347 - 480V, 60 Hz
Ballast Type	
GEB10PS90	1.0 BF, ≤10% THD
GEB10IS*	Normal BF, ≤10% THD
GEB10ISH*	High BF, ≤10% THD
Lamps	
(blank)	No Lamps
LP841	std life, 4100°K, 85 CRI
Options	
AL	Aluminum Construction
18GA	18-gauge housing

* Available only with T8 lamps.

Industrial Strips

13 - CH workshop, garbage area, mechanical and electrical rooms

FLUORESCENT

INDUSTRIAL

DOWNLIGHTING

EMERGENCY

OUTDOOR

General Purpose



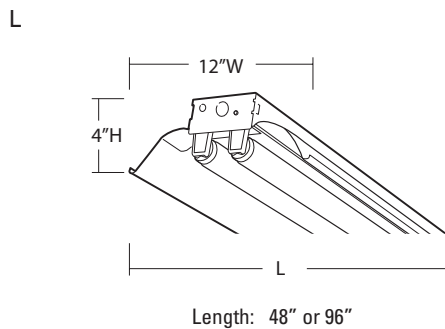
FEATURES

- Sturdy construction suitable for applications such as retail, light industrial and warehouses
- Die-formed from Code-gauge steel with white enamel finish and 12" wide solid top reflector
- No tool assembly required to install reflector
- End plate used for continuous row installation applications
- Ideal for heights up to 16', surface or suspended mounting
- FCC Part 18 for Residential and Commercial Applications (120V Only)
- Features a NEMA Premium Ballast (T8 only)

ORDERING INFORMATION

Catalog Number	UPC	Description	# of Lamps	Length	Wattage	Voltage	Reflector Type	Ballast Type	Lamp Included	Pallet Qty.	Standard	
											Carton Qty.	Carton Qty.
L232 MV	745975276394	T8 General Purpose Industrial	2	48"	32	120 - 277	Solid Top	NEMA Premium®, Instant Start	N	51	1	1
TL232 MV	745975276387	Tandem, T8 General Purpose Industrial	4	96"	32	120 - 277	Solid Top	NEMA Premium®, Instant Start	N	51	1	1
L296	745973858325	T12 General Purpose Industrial	2	96"	75	120	Solid Top	Electronic, Rapid Start	N	51	1	1

DIMENSIONS



ACCESSORIES

- WGL 48" Base Wireguard, White (order 2 for 8')

17 - replaces hanging
pendants in common house
dining room

Specification Sheet For 333-703/BCH



Specification

Item#: 333-703/BCH

Fixture Type: Ceiling Mounts

Lamping: 3 X 100W med. base

Glass Number: 031331 opal

Options

and all the compact fluorescent lamping options for this fixture please see the

Fluorescent section on this site.

Finish: Brushed Chrome

Dimensions

Height: 9"

Diameter: 15"

Extension:

Additional Info: N/A

18 - replaces potlights in
common house dining room

Specification Sheet For 386-706/BCH



Specification

Item#: 386-706/BCH

Fixture Type: Ceiling Mounts

Lamping: 1 X 40W - G9

Glass Number: 031860 opal

Options

Lamping Options: N/A

Finish: Brushed Chrome

Dimensions

Height: 2 1/2"

Diameter: 6"

Extension:

Additional Info: N/A