

Job Name:

Schedule Reference:

Date:



GENERAL FEATURES

- Dual set point functionality
- Multiple fan speed settings
- Auto fan mode
- 9-7/8" (250mm) high for low ceiling heights
- Built-in condensate lift; lifts to 27-9/16" (700 mm)
- Ducted fan coil supporting multiple configurations for flexible installation

OPTIONS

- External Heater Adapter.....CN24RELAY-KIT-CM3
- Filter Box (Includes 2" MERV 13 filter).....FBM2-2

SPECIFICATIONS

Capacity*

Cooling.....18,000 Btu/h
 Heating.....20,000 Btu/h

Power

Power Source.....208 / 230V, 1-phase, 60Hz

Power Consumption

Cooling.....0.11 kW
 Heating.....0.09 kW

Current

Cooling.....0.77 A
 Heating.....0.66A
 Minimum Circuit Ampacity (MCA).....1.56 A
 Maximum Overcurrent Protection (MOCP) Fuse.....15 A

External Finish.....Galvanized-steel Sheet

External Dimensions

Inches.....9-7/8 H x 35-7/16 W x 28-7/8 D
 mm.....250 H x 900 W x 732 D

Net Weight.....58 lbs. / 26 kg

Coil Type.....Cross Fin
 (Aluminum Plate Fin and Copper Tube)

Fan

Type x Quantity.....Sirocco Fan x 1
 Airflow Rate (Low-Mid-High)..... 424 - 512 - 600 CFM
 External Static Pressure.....0.14 - 0.20 - 0.28 - 0.40 - 0.60"WG
 (External static pressure is factory set to 0.20"WG)
 Motor Type.....DC Motor

Air Filter.....Polypropylene Honeycomb

Refrigerant Piping Dimensions

Liquid (High Pressure).....1/4" / 6.35 mm (Brazed)
 Gas (Low Pressure).....1/2" / 12.7 mm (Brazed)

Drainpipe Dimension.....O.D. 1-1/4" / 32 mm

Sound Pressure Levels

Low-Mid-High.....28 - 32 - 35 dB(A)

* Cooling / Heating capacity indicated at the maximum value at operation under the following conditions:
 Cooling | Indoor: 80° F (27° C) DB / 67° F (19° C) WB,
 Cooling | Indoor: Outdoor 95° F (35° C) DB
 Heating | Indoor: 70° F (21° C) DB,
 Heating | Outdoor 47° F (8° C) DB / 43° F (6° C) WB

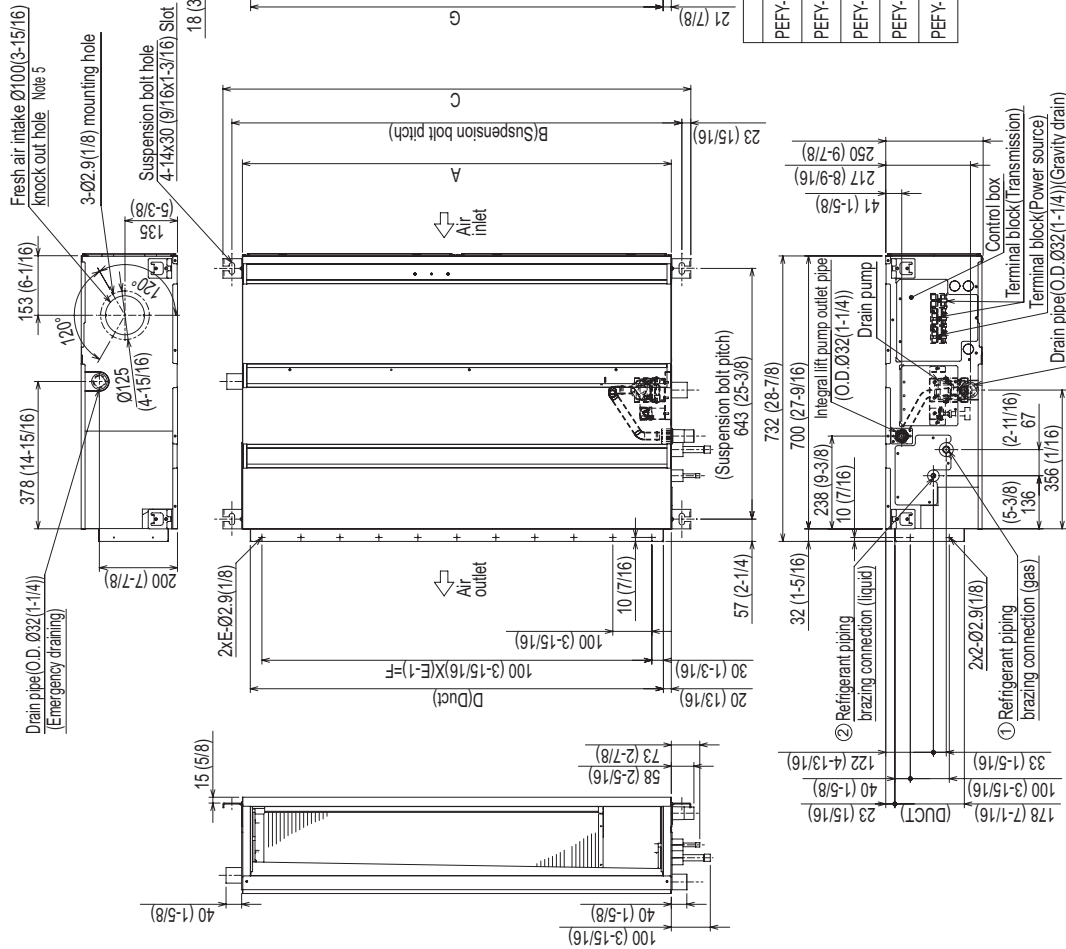
Notes:



Model: PEFY-P18NMAU-E2 – DIMENSIONS

Unit: mm (in)

- Note
1. Use an M10 screw for the suspension bolt (field supply).
 2. Keep the service space for maintenance at the bottom.
 3. This drawing is for PEFY-P24-27-30-36-48-54NMAU-E2 models, which have 2 fans. PEFY-P06-08-12-15-18NMAU-E2 models have 1 fan.
 4. If the inlet duct is used, remove the air filter (supplied with the unit), then install the filter (field supply) at the suction side.
 5. Heat air to 0°C (32°F) or higher when taking fresh air with a fresh air intake.

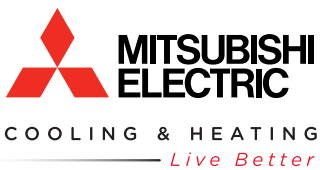


Model	① Gas pipe	② Liquid pipe
PEFY-P06,08,12NMAU-E2	Ø12.7 (1/2)	Ø6.35 (1/4)
PEFY-P15,P18NMAU-E2		
PEFY-P24,27,30NMAU-E2	Ø15.88 (5/8)	Ø9.52 (3/8)
PEFY-P36,48NMAU-E2		
PEFY-P54NMAU-E2		

Model	A	B	C	D	E	F	G
PEFY-P06,08,12NMAU-E2	700 (27-9/16)	754 (29-11/16)	800 (31-1/2)	660 (26)	7	600 (23-5/8)	658 (25-15/16)
PEFY-P15,P18NMAU-E2	900 (35-7/16)	954 (37-9/16)	1000 (39-3/8)	860 (33-7/8)	9	800 (31-1/2)	858 (33-13/16)
PEFY-P24,27,30NMAU-E2	1100 (43-5/16)	1154 (45-7/16)	1200 (47-1/4)	1060 (41-3/4)	11	1000 (39-3/8)	1058 (41-11/16)
PEFY-P36,48NMAU-E2	1400 (55-1/8)	1454 (57-1/4)	1500 (59-1/16)	1360 (53-9/16)	14	1300 (51-1/8)	1358 (53-11/16)
PEFY-P54NMAU-E2	1600 (63)	1654 (65-1/8)	1700 (66-15/16)	1560 (61-7/16)	16	1500 (59-1/16)	1558 (61-3/8)



FORM# PEFY-P18NMAU-E2 - 201310
 Specifications are subject to change without notice.
 © 2013 Mitsubishi Electric US, Inc.



1340 Satellite Boulevard
 Suwanee, GA 30024
 Tele: 678-376-2900 • Fax: 800-889-9904
 Toll Free: 800-433-4822
 www.mehvac.com