

**AMERICAN RIVER COLLEGE**  
**2008-09**

**ADDENDUM**

100

100



This ADDENDUM contains corrections, additions or deletions made to the following programs, certificates and degrees after the 2008-09 American River College Catalog went to press.

RED text indicates changes.

**Automotive Technology**

A.S. – Diesel Technology *Revised*

**Early Childhood Education**

Family Service Certificate *Deleted*

**Fashion**

A.A. – Fashion Design *Revised*

A.A. – Fashion Merchandising *Revised*

Fashion Design Certificate *Revised*

Fashion Merchandising Certificate *Revised*

**Funeral Services Education**

A.S. - Funeral Services Education *Revised*

**Geography**

A.S. – Geographic Information Systems *Revised*

Geographic Information Systems (GIS) Certificate *Revised*

**Interior Design**

A.A. – Interior Planning and Design *Revised*

Para-Professional Interior Design Assistant Certificate *Revised*

**Journalism**

A.A. – Journalism and Mass Communication *Revised*

**Paramedic**

A.S. – Paramedic *Revised*

Paramedic Certificate *Revised*

**Sign Language Studies**

A.A. – Interpreter Preparation Program *Revised*

Interpreter Preparation Certificate *Revised*

---

**English**

Reading Course Sequence *Revised*

Composition Course Sequence *Revised*

**Mathematics & Statistics**

Mathematics Course Sequence *Revised*

Area: Technical Education  
 Dean: Gabriel Meehan  
 Phone: (916) 484-8354  
 Counseling: (916) 484-8572  
 www.arc.losrios.edu/autotech  
 www.patc.biz



Degree: A.S. - Automotive Analysis  
 A.S. - Automotive Collision Technology  
 A.S. - Automotive Component Service Technician  
 A.S. - Automotive Technology  
**A.S. - Diesel Technology revised 4/08**

Certificates: Automotive Analysis  
 Automotive Claims Estimator  
 Automotive Collision Technology  
 Automotive Component Service Technician  
 Automotive Service Technician  
 Automotive Technology  
 Diesel Technology  
 Transmission Service

Certificates of Completion offered by the department:  
 Air Conditioning Service  
 Parts and Service  
 Undercar Service

The automotive technology program is a combination of classroom and hands-on shop experiences that prepare students for careers in all phases of automotive service and repair on all types of cars. Students are trained on the use of workshop manuals in traditional and computerized formats, hand held meters and scanners, and special shop tools including power and hand tools.

Highlights include:

- NATEF certified in: brakes, electrical/electronic systems, engine performance, suspension and steering, automatic transmission/transaxle, engine repair, heating and air conditioning, manual drive trains and axles.
- ASE certified instructors and programs.
- Students may begin 5-week courses 3 times during the semester.
- 5-week courses allow completion of some certificate programs in one semester.
- Small class size ensures individual attention and access to specialized equipment.
- Preparation for ASE and State Smog Certification (Emissions Control) exams.

### Automotive Analysis Degree and Certificate

This Automotive degree and certificate prepares the student for entry level employment as a smog and driveability service technician. The certificate also prepares the student for Automotive Service Excellence (ASE) certification in Engine Repair A1, Automatic Transmissions/Transaxles A2, Electrical A6, Engine Performance A8, Advanced Engine Performance L1 along with the California Enhanced Area (EA) Smog Check License.

#### Career Opportunities

Automotive Technician; Smog Check Technician

#### Requirements for Degree or Certificate 52 Units

1st Semester	
AT 100	Technical Basics for the Automotive Professional ..... 2
AT 105	Mathematics for Automotive Technology ..... 3
AT 180	Automotive Data Acquisition ..... 3

2nd Semester	
AT 110	Automotive Brakes ..... 4
AT 311	Suspension and Steering Systems ..... 4
AT 312	Electrical Systems ..... 4
3rd Semester	
AT 130	Manual Drive Trains and Axles ..... 4
AT 313	Automatic Transmission and Transaxles ..... 4
AT 314	Automotive Engine Repair ..... 4
4th Semester	
AT 310	Heating and Air-Conditioning Systems ..... 4
AT 322	Engine Performance and Electronic Engine Controls ..... 6
Final Semester	
AT 315	Advanced Engine/Chassis Electrical..... 4
AT 323	Clean Air Car Course ..... 6

**Associate Degree Requirements:** The Automotive Analysis Associate in Science (A.S.) Degree may be obtained by completion of the required program, plus general education requirements, plus sufficient electives to meet a 60-unit total. See ARC graduation requirements.

### Automotive Collision Technology Degree and Certificate

#### Requirements for Degree or Certificate 25.5 Units

AT 121	Automotive Collision - Removal and Replacement of Non-Structural Components and Damage Analysis ..... 2.5
AT 122	Automotive Collision - Non-Structural Repairs ..... 2.5
AT 123	Automotive Collision - Structural Panel & Component Repairs .. 2.5
AT 124	Automotive Refinishing Technology ..... 2.5
AT 126	Automotive Collision Estimating ..... 2
AT 310	Heating and Air-Conditioning Systems ..... 4
AT 311	Suspension and Steering Systems ..... 4
AT 312	Electrical Systems ..... 4
WELD 103	Gas Metal Arc Welding of Sheet Steel ..... 1.5

**Associate Degree Requirements:** The Automotive Collision Technology Associate in Science (A.S.) Degree may be obtained by completion of the required program, plus general education requirements, plus sufficient electives to meet a 60-unit total. See ARC graduation requirements.

## Automotive Component Service Technician Degree and Certificate

This degree or certificate prepares the student for employment repairing of various automobile components including those requiring computer technology.

### Career Opportunities

Employment as a technician, shop foreman, service manager for new car dealers, automotive repair shops, fleet operators.

Requirements for Degree or Certificate		40 Units
AT 100	Technical Basics for the Automotive Professional	2
AT 105	Mathematics for Automotive Technology	3
AT 110	Automotive Brakes	4
AT 130	Manual Drive Trains and Axles	4
AT 140	Advanced Automotive Skill and Speed Development	4
AT 180	Automotive Data Acquisition	3
AT 310	Heating and Air-Conditioning Systems	4
AT 311	Suspension and Steering Systems	4
AT 312	Electrical Systems	4
AT 313	Automatic Transmission and Transaxles	4
AT 314	Automotive Engine Repair	4

**Associate Degree Requirements:** The Automotive Component Service Technician Associate in Science (A.S.) Degree may be obtained by completion of the required program, plus general education requirements, plus sufficient electives to meet a 60-unit total. See ARC graduation requirements.

## Automotive Technology Degree and Certificate

This program prepares the student for an entry level position in the automotive industry with emphasis on engine management systems, emission controls, and complete automotive systems diagnosis and repair. The program also prepares the student for all 9 Automotive Service Excellence (ASE) certifications including Advanced Engine Performance (L-1) as well as the state Enhanced Area (EA) Smog Certification Test.

Requirements for Degree or Certificate		60 Units
AT 100	Technical Basics for the Automotive Professional	2
AT 105	Mathematics for Automotive Technology	3
AT 110	Automotive Brakes	4
AT 130	Manual Drive Trains and Axles	4
AT 180	Automotive Data Acquisition	3
AT 310	Heating and Air-Conditioning Systems	4
AT 311	Suspension and Steering Systems	4
AT 312	Electrical Systems	4
AT 313	Automatic Transmission and Transaxles	4
AT 314	Automotive Engine Repair	4
AT 320	Engine Performance Technology	12
AT 321	Engine Performance Technology	12

**Associate Degree Requirements:** The Automotive Technology Associate in Science (A.S.) Degree may be obtained by completion of the required program, plus general education requirements, plus sufficient electives to meet a 60-unit total. See ARC graduation requirements.

## Diesel Technology Degree revised 4/08

Requirements for Degree or Certificate		24 Units
AT 150	Introduction to Diesel Technology	4
AT 151	Diesel Engine Repair	4
AT 152	Basic Hydraulic Principles of Diesel Technology	4
AT 153	Diesel Brake Systems	4
AT 154	Diesel Electrical Systems	4
AT 155	Diesel Power Trains	4

**Associate Degree Requirements:** The Diesel Mechanics Associate in Science (A.S.) Degree may be obtained by completion of the required program, plus general education requirements, plus sufficient electives to meet a 60-unit total. See ARC graduation requirements.

## Diesel Technology Certificate

Requirements for Degree or Certificate		24 Units
AT 150	Introduction to Diesel Technology	4
AT 151	Diesel Engine Repair	4
AT 152	Basic Hydraulic Principles of Diesel Technology	4
AT 153	Diesel Brake Systems	4
AT 154	Diesel Electrical Systems	4
AT 155	Diesel Power Trains	4

## Air Conditioning Service Certificate

This certificate program prepares the student for an entry level position in the automotive industry. This program also prepares the student for Automotive Service Excellence (ASE) certification in Air Conditioning A-7.

Requirements for Certificate		16 Units
AT 100	Technical Basics for the Automotive Professional	2
AT 105	Mathematics for Automotive Technology	3
AT 180	Automotive Data Acquisition	3
AT 310	Heating and Air-Conditioning Systems	4
AT 312	Electrical Systems	4

## Automotive Claims Estimator Certificate

Requirements for Certificate		21 Units
AT 100	Technical Basics for the Automotive Professional	2
AT 105	Mathematics for Automotive Technology	3
AT 126	Automotive Collision Estimating	2
AT 127	Automotive Collision Estimating II	2
AT 310	Heating and Air-Conditioning Systems	4
AT 311	Suspension and Steering Systems	4
BUS 212	Marketing for Small Businesses	1
BUS 218	Management Skills for the Small Business	1
BUS 224	Customer Service	1
<b>And a minimum of 1 unit from the following:</b>		<b>1</b>
BUSTEC 300	Beginning Keyboarding/Applications (1 - 3)	

## Automotive Service Technician Certificate

This certificate prepares the student for an entry-level position in the automotive industry. It also prepares the student for Automotive Service Excellence (ASE) certifications in Automotive Brakes, Manual Drive Trains and Axles, Heating and Air-Conditioning Systems, Suspension and Steering Systems, Electrical Systems, Automatic Transmission and Transaxles, and Automotive Engine Repair.

### Career Opportunities

The Automotive Service Technician certificate prepares the student for entry level-positions in the fields of Auto Technician, Auto/Truck Specialist, Field Service, Sales Representative, Tune-up and Electrical Specialist.

<b>Requirements for Certificate</b>		<b>36 Units</b>
AT 100	Technical Basics for the Automotive Professional .....	2
AT 105	Mathematics for Automotive Technology .....	3
AT 110	Automotive Brakes .....	4
AT 130	Manual Drive Trains and Axles .....	4
AT 180	Automotive Data Acquisition .....	3
AT 310	Heating and Air-Conditioning Systems .....	4
AT 311	Suspension and Steering Systems .....	4
AT 312	Electrical Systems .....	4
AT 313	Automatic Transmission and Transaxles .....	4
AT 314	Automotive Engine Repair .....	4

### Parts and Service Certificate

This certificate provides training for automotive parts and service advisors. Topics include parts knowledge, integrated computer management software, scheduling, inventory control, hazardous materials and warranty documentation requirements.

#### Career Opportunities

Various positions in the automotive parts and service industry, such as service advisors and parts managers.

<b>Requirements for Certificate</b>		<b>17 Units</b>
AT 100	Technical Basics for the Automotive Professional .....	2
AT 105	Mathematics for Automotive Technology .....	3
AT 107	Employability Skills for Technical Careers .....	2
AT 143	Automotive Parts .....	3
AT 146	Automotive Service Advising .....	3
AT 180	Automotive Data Acquisition .....	3
<b>And a minimum of 1 unit from the following:</b> .....		<b>1</b>
AT 298	Work Experience in Automotive Technology (1 - 4)	

### Transmission Service Certificate

This certificate program prepares the student for an entry-level position in the automotive industry. This program includes Automotive Service Excellence (ASE) certification in A-2 automatic transmission and A-3 manual drive-train.

#### Career Opportunities

Entry-level positions in automatic transmission, clutch, and drive-train repair.

<b>Requirements for Certificate</b>		<b>28 Units</b>
AT 100	Technical Basics for the Automotive Professional .....	2
AT 105	Mathematics for Automotive Technology .....	3
AT 130	Manual Drive Trains and Axles .....	4
AT 140	Advanced Automotive Skill and Speed Development .....	4
AT 180	Automotive Data Acquisition .....	3
AT 210	Advanced Automatic Transmission and Transaxle .....	4
AT 312	Electrical Systems .....	4
AT 313	Automatic Transmission and Transaxles .....	4

### Undercar Service Certificate

The Undercar Service certificate provides entry-level training to perform repairs in automotive suspension, brake and exhaust service facilities.

#### Career Opportunities

This certificate provides students with knowledge for entry-level careers in the automotive suspension, brake and exhaust repair facilities.

<b>Requirements for Certificate:</b>		<b>17 Units</b>
AT 100	Technical Basics for the Automotive Professional .....	2
AT 110	Automotive Brakes .....	4
AT 145	Automotive Exhaust System .....	4
AT 180	Automotive Data Acquisition .....	3
AT 311	Suspension and Steering Systems .....	4

Area: Health & Education  
 Dean: Sheryl Gessford  
 Phone: (916) 484-8432  
 Counseling: (916) 484-8572

Degree: A.A. - Early Childhood Education  
 Certificates: Assistant Teacher  
 Associate Teacher  
 Culture and Diversity Specialist  
 Family Child Care  
 Family Service Deleted 2/2/08  
 Infant Specialist  
 Management Specialist  
 Master Teacher  
 School Age  
 Site Supervisor  
 Teacher

### The ARC Early Childhood Education Program

The course work in the ARC Early Childhood Education department is approved by the California Commission on Teacher Credentialing as meeting the requirements for the California Child Development Permits. Students who complete selected certificates in the ECE program are recommended by the American River College faculty to the Commission on Teacher Credentialing for direct issuance of Child Development Permits.

### Early Childhood Education Degree

This program provides a foundation for in-depth early childhood teacher preparation both through strong general education and through introductory studies in child development and in early childhood curriculum and pedagogy. Topics include an introduction to the profession, observation techniques, age-appropriate curriculum, the child in the context of family and culture, and health and safety practices for early childhood educators.

### Career Opportunities

Upon completion of the A.A. degree, a student possesses the course work required to work as a teacher in both private and public early care and education settings, serving infants through preschool-age children. Additionally, the individual can work as a teacher in before-and-after school programs, serving school-age children.

### Requirements for Degree 32-33 Units

ECE 300	Introduction to Early Childhood Education .....	3
ECE 312	Child Development (3) .....	3
or PSYC 372	Child Development (3)	
ECE 314	The Child, the Family and the Community .....	3
ECE 320	Principles and Practices in Early Childhood Education .....	4
ECE 321	Advanced Principles and Practices in ECE .....	4
ECE 331	Education and Care of Infants in Group Settings .....	3
ECE 410	Health and Safety in Child Care Settings .....	1
ECE 420	Administration of Child Development Centers (3) .....	2-3
or ECE 424	Adult Supervision: Mentoring in a Collaborative Learning Setting .....	(2)
ECE 430	Culture and Diversity in Early Childhood Education .....	3

**And a minimum of 6 units from the following: .....** 6

ECE 305	Introduction to Family Child Care (1)
ECE 316	Mass Media and Young Children (1)
ECE 325	Guidance and Discipline for Young Children (3)
ECE 330	Infant Development (3)
ECE 356	Programs for the School-Age Child (3)
ECE 361	Introducing Young Children to Visual Arts (3)
ECE 363	Music and Movement with Young Children (3)
ECE 404	Children with Special Needs (3)

ECE 432	Leadership in Diversity (3)
NUTRI 320	Children's Health, Safety and Nutrition (3)
or ECE 415	Children's Health, Safety and Nutrition (3)

**Associate Degree Requirements:** The Early Childhood Education Associate in Arts (A.A.) Degree may be obtained by completion of the required program, plus general education requirements, plus sufficient electives to meet a 60-unit total. See ARC graduation requirements.

### Certificates Leading to Child Development Permits

ARC also offers a sequence of certificates that guide students in working their way up the California Development Permit matrix. Students who complete the following certificates will, upon verification of required experience, be recommended to the Commission on Teacher Credentialing for issuance of Child Development Permits.

### Assistant Teacher Certificate

This certificate provides entry-level coursework in preparation to be an assistant teacher in an early care and education program. Topics include an introduction to the field and child development theories and principles. Upon completion of this certificate, the student is eligible to apply for the Assistant Teacher Child Development Permit with the Commission on Teacher Credentialing.

### Career Opportunities

With an Assistant Teacher Certificate, students are eligible to work in private and public early care and education programs as assistant teachers. These programs include infant/toddler centers, preschools, and before-and-after school programs serving school-age children. Additionally, assistant teachers can operate their own family child care home.

### Requirements for Certificate 6 Units

ECE 300	Introduction to Early Childhood Education .....	3
ECE 312	Child Development (3) .....	3
or PSYC 372	Child Development (3)	

### Associate Teacher Certificate

This certificate provides the educational coursework that serves as the core curriculum for the early childhood education field. Topics include an introduction to the profession, observation techniques, age-appropriate curriculum, and the child in the context of the family and community. Additionally, there is a focus on practicing these concepts in a supervised field/lab environment. With docu-

mented work experience, the student is also eligible to apply to the Commission on Teacher Credentialing for the Associate Teacher Child Development Permit.

### Career Opportunities

This certificate allows the student to work as a teacher in a private early care and education (Title 22) program, serving infants/toddlers, preschool-age children, and school-age children in before-and-after school programs. With the Associate Teacher Child Development Permit, an individual can work as an assistant or associate teacher in a publicly funded (Title 5) early care and education program.

Requirements for Certificate		13 Units
ECE 300	Introduction to Early Childhood Education .....	3
ECE 312	Child Development (3) .....	3
or PSYC 372	Child Development (3)	
ECE 314	The Child, the Family and the Community .....	3
ECE 320	Principles and Practices in Early Childhood Education .....	4

### Teacher Certificate

This certificate provides a foundation for in-depth early childhood teacher preparation both through general education and through introductory studies in child development and in early childhood curriculum and pedagogy. Additionally, it covers culture and diversity issues in early childhood and health and safety practices. Students must verify required teaching experience to be recommended to the Commission on Teacher Credentialing for issuance of the Teacher Child Development Permit.

### Career Opportunities

Upon completion of this certificate and with appropriate documented experience, the student meets the requirement for employment as a teacher in publicly funded early care and education programs, serving infants through preschool-age children. The student also meets the requirements to work as a teacher in a privately funded early care and education program, as well as in a before-and-after school-age program.

Requirements for Certificate		40 Units
ECE 300	Introduction to Early Childhood Education .....	3
ECE 312	Child Development (3) .....	3
or PSYC 372	Child Development (3)	
ECE 314	The Child, the Family and the Community .....	3
ECE 320	Principles and Practices in Early Childhood Education .....	4
ECE 321	Advanced Principles and Practices in ECE .....	4
ECE 331	Education and Care of Infants in Group Settings (3) .....	3
or ECE 356	Programs for the School-Age Child (3)	
or ECE 404	Children with Special Needs (3)	
ECE 410	Health and Safety in Child Care Settings .....	1
ECE 430	Culture and Diversity in Early Childhood Education .....	3

**And a minimum of 16 units from the following:..... 16**

At least one course from each of the following four areas listed in the ARC graduation requirements: (1) Math/Science: Natural Science or a course satisfying the Mathematics Competency requirement; (2) English: Language & Rationality; (3) Humanities; and (4) Social Sciences: Social & Behavioral Sciences.

### Master Teacher Certificate

This certificate meets the requirements for teaching in a publicly funded early care and education program. It requires an additional 6 units of specialized study beyond the teacher level certificate, allowing the student to select a particular focus of study (i.e., infant/toddler; culture and diversity; health and nutrition; children's literature; and art or music for young children). Applicants must verify required experience teaching children and supervising staff to be recommended to the California Commission on Teacher Credentialing for issuance of the Master Teacher Child Development Permit.

### Career Opportunities

This certificate qualifies students to be a master teacher or a supervising teacher in early care and education programs. Upon completion of this certificate and with documented related experience, the individual is eligible to be a lead teacher and/or mentor teacher in both publicly and privately funded programs serving young children and their families.

Core Requirements for Certificate		42 Units
ECE 300	Introduction to Early Childhood Education .....	3
ECE 312	Child Development (3) .....	3
or PSYC 372	Child Development (3)	
ECE 314	The Child, the Family and the Community .....	3
ECE 320	Principles and Practices in Early Childhood Education .....	4
ECE 321	Advanced Principles and Practices in ECE .....	4
ECE 331	Education and Care of Infants in Group Settings (3) .....	3
or ECE 356	Programs for the School-Age Child (3)	
or ECE 404	Children with Special Needs (3)	
ECE 410	Health and Safety in Child Care Settings .....	1
ECE 424	Adult Supervision: Mentoring in a Collaborative Learning Setting .....	2
ECE 430	Culture and Diversity in Early Childhood Education .....	3

**And a minimum of 16 units from the following:..... 16**

At least one course from each of the following four areas listed in the ARC graduation requirements: (1) Math/Science: Natural Science or a course satisfying the Mathematics Competency requirement; (2) English: Language & Rationality; (3) Humanities; and (4) Social Sciences: Social and Behavioral Sciences.

### Master Teacher Specialization Concentrations

Art with Children		48 Units
Core Requirements .....		42
ECE 361	Introducing Young Children to Visual Arts .....	3
<b>And a minimum of 3 units from the following:..... 3</b>		
ART 320	Design: Fundamentals (3)	
ART 432	Art for Children Practicum (2 - 4)	
ARTH 300	Introduction to Art (3)	

Children's Health, Safety and Nutrition		48 Units
Core Requirements .....		42
ECE 415	Children's Health, Safety and Nutrition (3) .....	3
or NUTRI 320	Children's Health, Safety and Nutrition (3)	
NUTRI 300	Nutrition .....	3

Children's Literature		48 Units
Core Requirements .....		42
ENGLT 370	Children and Literature .....	3
ENGLT 372	Children and Literature: Storytelling .....	1
ENGLT 374	Children and Literature: Multicultural Literature .....	1
ENGLT 376	Children and Literature: Reader's Theatre .....	1

**Culture and Diversity 48 Units**

Core Requirements .....	42
ECE 432 Leadership in Diversity .....	3
<b>And a minimum of 3 units from the following: .....</b>	<b>3</b>

Any course from Area VI of the ARC GE graduation requirements, with the exception of ECE 430.

**Drama with Children 48 Units**

Core Requirements .....	42
TA 400 Creative Drama for Children .....	3
TA 404 Techniques of Puppetry (3) .....	3
or TA 406 Children's Theatre (3)	

**Infant Care 48 Units**

Core Requirements .....	42
ECE 331 Education and Care of Infants in Group Settings .....	3
<b>And a minimum of 3 units from the following: .....</b>	<b>3<sup>1</sup></b>
ECE 330 Infant Development (3)	
ECE 334 Laboratory with Infants and Toddlers (1)	

<sup>1</sup>If ECE 331 is taken to meet core requirements, ECE 330 and 3 units of ECE 334 (may be repeated) are required.

**Music with Children 48 Units**

Core Requirements .....	42
ECE 363 Music and Movement with Young Children .....	3
<b>And a minimum of 3 units from the following: .....</b>	<b>3</b>
MUFHL 330 World Music (3)	
MUIVI 340 Beginning Piano (2)	
MUIVI 341 Beginning Piano (2)	
MUIVI 370 Beginning Guitar (2)	
MUIVI 371 Intermediate Guitar (2)	
MUSM 370 Music for Children (3)	

**School-Age Care 48 Units**

Core Requirements .....	42
ECE 356 Programs for the School-Age Child .....	3
<b>And a minimum of 3 units from the following: .....</b>	<b>3<sup>2</sup></b>
ECE 358 Activities for the School-Age Child-Six to Fourteen Years (3)	
RECR 320 Recreation Activity Leadership (3)	

<sup>2</sup>If ECE 356 is taken to meet core requirements, both ECE 358 and RECR 320 are required.

**Special Needs 48 Units**

Core Requirements .....	42
ECE 404 Children with Special Needs .....	3
<b>And a minimum of 3 units from the following: .....</b>	<b>3<sup>3</sup></b>
ECE 405 Practicum in Inclusive Settings (3)	
PET 312 Theory and Techniques of Adapted Physical Education (3)	
SILA 305 American Sign Language 1 (4)	
SILA 330 Impact of Deafness (3)	
SILA 332 Educating Deaf People (3)	

<sup>3</sup>If ECE 404 is taken to meet core requirements, 6 units from the course options are required.

**Site Supervisor Certificate**

Administration of early care and education programs is the main focus of this certificate. Topics include administration, supervision and coordination of staff in early childhood settings. Additionally, it provides the educational coursework that serves as the core curriculum for the early childhood education field. Along with documented experience, this certificate leads to the Site Supervisor Permit issued by the California Commission on Teacher Credentialing and is required of those individuals supervising a publicly funded early childhood education site.

**Career Opportunities**

Upon completion of this certificate, the student exceeds the minimum requirements to work as a director/site supervisor in a privately funded early care and education program. With documented experience supervising staff, the student also meets the requirements to work as a director/site supervisor in a publicly funded early care and education program.

**Requirements for Certificate 60 Units**

ECE 300 Introduction to Early Childhood Education .....	3
ECE 312 Child Development (3) .....	3
or PSYC 372 Child Development (3)	
ECE 314 The Child, the Family and the Community .....	3
ECE 320 Principles and Practices in Early Childhood Education .....	4
ECE 321 Advanced Principles and Practices in Early Childhood Education .....	4
ECE 331 Education and Care of Infants in Group Settings .....	3
ECE 410 Health and Safety in Child Care Settings .....	1
ECE 420 Administration of Child Development Centers .....	3
ECE 422 Advanced Coordination/Supervision Child Development Programs .....	3
ECE 424 Adult Supervision: Mentoring in a Collaborative Learning Setting .....	2
ECE 430 Culture and Diversity in Early Childhood Education .....	3
<b>And a minimum of 6 units from the following: .....</b>	<b>6</b>
ECE 305 Introduction to Family Child Care (1)	
ECE 316 Mass Media and Young Children (1)	
ECE 325 Guidance and Discipline for Young Children (3)	
ECE 330 Infant Development (3)	
ECE 356 Programs for the School-Age Child (3)	
ECE 361 Introducing Young Children to Visual Arts (3)	
ECE 363 Music and Movement with Young Children (3)	
ECE 404 Children with Special Needs (3)	
ECE 415 Children's Health, Safety and Nutrition (3)	
or NUTRI 320 Children's Health, Safety and Nutrition (3)	
ECE 432 Leadership in Diversity (3)	

**And a minimum of 22 units from the following: .....** 22<sup>1</sup>

A minimum of 16 units that fulfill the ARC General Education units must be completed in all four of the following areas: Language/Rationality; Humanities; Behavioral Social Science; and Math OR Science. The additional 6 units may also be courses that fulfill the General Education requirement OR any other 6 units.

<sup>1</sup>None of these 22 units may be courses that were used in the above "Required Program".

The Early Childhood Education Department is also authorized to recommend students to the Commission on Teacher Credentialing for the Child Development Assistant Permit and for the Program Director Permit. Students who wish to be recommended for the Child Development Assistant Permit must have completed ECE 312/PSYCH 372, and ECE 300 for a total of six units. Students who wish to be recommended for the Child Development Program Director Permit must verify completion of a BA degree, possess the Child Development Teacher Certificate, and complete ECE 420, 422 and 424. This permit is required for those supervising multiple publicly-funded early childhood education sites.

**Specialist Certificates**

The following certificates are designed for students who seek courses which will prepare them to work with a specific age group or program type. The following certificates meet the minimum requirements for teaching in or administering privately-funded early care and education.



## Culture & Diversity Specialist Certificate

This certificate provides the educational coursework that serves as the core curriculum for the early childhood education field. Topics include an introduction to the profession, observation techniques, age-appropriate curriculum and a supervised field/lab experience. Additionally, it offers a specialization in culture and diversity issues dealing with young children and their families.

### Career Opportunities

Upon completion of this specialization certificate, the individual is eligible to be a teacher in a privately funded (Title 22) early care and education program and/or an associate teacher in a publicly funded (Title 5) program serving young children and their families.

Requirements for Certificate		20 Units
ECE 300	Introduction to Early Childhood Education .....	3
ECE 312	Child Development (3) .....	3
or PSYC 372	Child Development (3)	
ECE 314	The Child, the Family and the Community .....	3
ECE 320	Principles and Practices in Early Childhood Education .....	4
ECE 410	Health and Safety in Child Care Settings .....	1
ECE 430	Culture and Diversity in Early Childhood Education .....	3
ECE 432	Leadership in Diversity .....	3

## Family Child Care Certificate

This certificate provides a foundation in early childhood education and includes courses specific to family child care providers. Additional topics include child development theories and principles, the child in the context of the family, and general health and safety practices.

### Career Opportunities

Upon completion of this certificate, the student is prepared to offer quality in-home child care to families in the community.

Requirements for Certificate		8 Units
ECE 305	Introduction to Family Child Care .....	1
ECE 312	Child Development (3) .....	3
or PSYC 372	Child Development (3)	
ECE 314	The Child, the Family and the Community .....	3
ECE 410	Health and Safety in Child Care Settings .....	1

## Family Service Certificate deleted 2/08

This certificate provides a foundation in early childhood education and includes courses specific to providing support services to families. Topics include child development theories and principles, the child in the context of family and culture, and an introduction to the field of human services.

### Career Opportunities

Upon completion of this certificate, the student is prepared to be a family support service worker in early care and education programs. Additionally, the student is eligible to be a teacher in a privately funded (Title 22) early care and education program, serving infants through preschool-age children.

Requirements for Certificate		15 Units
ECE 312	Child Development (3) .....	3
PSYC 372	Child Development (3)	
ECE 314	The Child, the Family and the Community .....	3
ECE 430	Culture and Diversity in Early Childhood Education .....	3
ECE 440	Intro to Family Support Services in Early Childhood Education .....	3
HSER 300	Introduction to Human Services .....	3

## Infant Specialist Certificate

This certificate provides the educational coursework that serves as the core curriculum for the early childhood education field. Topics include an introduction to the profession, observation techniques, age-appropriate curriculum, and a supervised field/lab experience. Additionally, it focuses on infant development and the care of education of infants/toddlers in group settings.

### Career Opportunities

Upon completion of this certificate, the student exceeds the minimum requirements to be a teacher of infants and toddlers in privately funded early childhood education programs (as required by Title 22 of the California Social Services Code of Regulations). Additionally, the student qualifies as an associate teacher of infants and toddlers in publicly funded early childhood education programs (as required by Title 5 California Education Code of Regulations).

Requirements for Certificate		21 Units
ECE 300	Introduction to Early Childhood Education .....	3
ECE 312	Child Development (3) .....	3
or PSYC 372	Child Development (3)	
ECE 314	The Child, the Family and the Community .....	3
ECE 320	Principles and Practices in Early Childhood Education .....	4
ECE 330	Infant Development .....	3
ECE 331	Education and Care of Infants in Group Settings .....	3
ECE 334	Laboratory with Infants and Toddlers .....	1
ECE 410	Health and Safety in Child Care Settings .....	1

## Management Specialist Certificate

This certificate provides the educational coursework that serves as the core curriculum for the early childhood education field. Topics include an introduction to the profession, observation techniques, age-appropriate curriculum, and a supervised field/lab experience. Additionally, it covers administration and management issues relating to the operation of center-based early care and education programs.

**Career Opportunities**

Upon completion of the certificate and with additional documented experience, the student exceeds the minimum educational requirements for employment as a director/manager of a privately funded early care and education program. The minimum requirements are outlined in Title 22 (Department of Social Services) regulations for child care licensing.

<b>Requirements for Certificate</b>		<b>22 Units</b>
ECE 300	Introduction to Early Childhood Education .....	3
ECE 312	Child Development (3) .....	3
or PSYC 372	Child Development (3)	
ECE 314	The Child, the Family and the Community .....	3
ECE 320	Principles and Practices in Early Childhood Education .....	4
ECE 410	Health and Safety in Child Care Settings .....	1
ECE 420	Administration of Child Development Centers .....	3
ECE 422	Advanced Coordination /Supervision of Child Development Programs .....	3
ECE 424	Adult Supervision: Mentoring in a Collaborative Learning Setting .....	2

**School Age Specialist Certificate**

This certificate provides the educational coursework that serves as the core curriculum for the early childhood education field. Topics include an introduction to the profession, observation techniques, age-appropriate curriculum, and a supervised field/lab experience. Additionally, it covers specific school-age program requirements and activities.

**Career Opportunities**

Upon completion of this certificate and with appropriate documented experience, the student exceeds the minimum requirements for employment as a teacher in privately funded before-and-after school child care programs. These requirements are outlined in Title 22 (Department of Social Services) regulations for child care licensing.

<b>Requirements for Certificate</b>		<b>20 Units</b>
ECE 300	Introduction to Early Childhood Education .....	3
ECE 312	Child Development (3) .....	3
or PSYC 372	Child Development (3)	
ECE 314	The Child, the Family and the Community .....	3
ECE 320	Principles and Practices in Early Childhood Education .....	4
ECE 356	Programs for the School-Age Child .....	3
ECE 358	Activities for the School-Age Child (Six to Fourteen Years) .....	3
ECE 410	Health and Safety in Child Care Settings .....	1

Area: Fine & Applied Arts  
 Dean: Dr. David Newnham  
 Phone: (916) 484-8433  
 Counseling: (916) 484-8572

Degree: **A.A. - Fashion Design revised 2/08**  
**A.A. - Fashion Merchandising revised 3/08**  
 Certificate: **Fashion Design revised 2/08**  
**Fashion Merchandising revised 2/08**

### Fashion Design Degree revised 2/08

The associate degree in Fashion Design develops the skills necessary to coordinate original design concepts with manufacturing, marketing, and merchandising practices. Course work includes basic industry sewing, pattern drafting, draping, textiles, historic and current fashion trends, hand and computer illustration, and entrepreneurial opportunities.

#### Career Opportunities

This program prepares students for entry-level jobs in apparel production companies, apparel manufacturing plants, designer workrooms, and custom sewing workrooms. This program also prepares students for self-employment or entrepreneurship. Examples of careers in Fashion Design include: Assistant Designer, CAD Technician, Computer Digitizer, Costing Engineer, Customer Services, Designer, Design Room Assistant, Fashion Illustrator, Fashion Stylist, First Pattern Maker, Grader, Manufacturer's Sales Representative, Marker Maker, Operation Manager, Piece Goods Buyer, Product Specialist, Production Manager, Production Pattern Maker, Quality Controller, Quick Response Manager, Sales Manager, Sample Maker, Sewing Room Supervisor, Showroom Assistant, Tailor, Textile Colorist, Textile Croquis Painter, Textile Designer, Textile Researcher, Textile Tester, and Trim Buyer.

Requirements for Degree		39 Units
FASHN 151	Basic Industry Sewing .....	3
FASHN 300	Introduction to the Fashion Industry .....	3
FASHN 310	Fashion Analysis/Clothing Selection .....	3
FASHN 320	Textiles .....	3
FASHN 330	History of Western World Fashion .....	3
FASHN 342	Fashion Illustration .....	3
FASHN 344	Apparel Line Development .....	3
FASHN 353	Advanced Sewing and Draping .....	3
FASHN 374	Pattern Making and Design .....	3
FASHN 378	Advanced Pattern Making and Design .....	3
FASHN 380	Computer Patternmaking .....	3
FASHN 382	Collection Design and Production .....	3
FASHN 398	Fashion Entrepreneur .....	3

**Associate Degree Requirements:** The Fashion Design Associate in Arts (A.A.) Degree may be obtained by completion of the required program, plus general education requirements, plus sufficient electives to meet a 60-unit total. See ARC graduation requirements.

### Fashion Design Certificate revised 2/08

The certificate in Fashion Design develops the skills necessary to coordinate original design concepts with manufacturing, marketing, and merchandising practices. Course work concentrates on basic industry sewing, pattern drafting, historic and current fashion trends, hand and computer illustration, and textiles as they relate to the fashion industry.

Requirements for Certificate		30 Units
FASHN 151	Basic Industry Sewing .....	2
FASHN 300	Introduction to the Fashion Industry .....	3
FASHN 310	Fashion Analysis/Clothing Selection .....	3
FASHN 320	Textiles .....	3
FASHN 342	Fashion Illustration .....	3
FASHN 344	Apparel Line Development .....	3
FASHN 353	Advanced Sewing and Draping .....	3
FASHN 374	Pattern Making and Design .....	3
FASHN 378	Advanced Pattern Making and Design .....	3
FASHN 382	Collection Design and Production .....	3

### Fashion Merchandising Degree revised 3/08

The associate degree in Fashion Merchandising develops the skills necessary for jobs in fashion coordinating, promotion, visual presentation, management, merchandising, retail buying, and entrepreneurial opportunities.

#### Career Opportunities

This program prepares students for entry-level jobs in retail merchandising, such as Department Store Buyers, Small Boutique Buyers, Visual Merchandisers, Sales Associates, Management Trainees, Product Developers and Wholesalers. This program also prepares students for self-employment or entrepreneurship.

Requirements for Degree		27-30 Units
FASHN 300	Introduction to the Fashion Industry .....	3
FASHN 310	Fashion Analysis/Clothing Selection .....	3
FASHN 320	Textiles .....	3
FASHN 330	History of Western World Fashion .....	3
FASHN 342	Fashion Illustration .....	3
FASHN 393	Fashion Promotion .....	3
FASHN 395	Visual Merchandising .....	2
FASHN 397	Fashion Retail Buying .....	3
FASHN 398	Fashion Entrepreneur .....	3
FASHN 498	Work Experience in Fashion (1 -4).....	1 - 4
or MGMT 362	Techniques of Management (3)	

**Associate Degree Requirements:** The Fashion Merchandising Associate in Arts (A.A.) Degree may be obtained by completion of the required program, plus general education requirements, plus sufficient electives to meet a 60-unit total. See ARC graduation requirements.

### Fashion Merchandising Certificate revised 2/08

The certificate in Fashion Merchandising develops the skills necessary for jobs in the retail market. Course work concentrates on fashion coordination, promotion, visual presentation, management, merchandising, retail buying, and entrepreneurial opportunities.

Requirements for Certificate		20 Units
FASHN 300	Introduction to the Fashion Industry .....	3
FASHN 310	Fashion Analysis/Clothing Selection .....	3
FASHN 320	Textiles .....	3
FASHN 393	Fashion Promotion .....	3
FASHN 395	Visual Merchandising .....	2
FASHN 397	Fashion Retail Buying .....	3
FASHN 398	Fashion Entrepreneur .....	3

Area: Health & Education  
 Dean: Sheryl Gessford  
 Coordinator: Jeffrey Stephenson  
 Phone: (916) 484-8350 or 484-8432  
 Counseling: (916) 484-8572

Degree: **A.S. - Funeral Service Education**  
**revised 1/08**

## Funeral Service Education Degree

The Funeral Service Education program is a two-year associate of science degree that prepares students for entry-level positions in funeral service. The program is designed to meet the prerequisites for licensure and employment in the field of funeral service as funeral directors or embalmers.

The Funeral Service Education Program at American River College is accredited by the American Board of Funeral Service Education (ABFSE) 3432 Ashland Avenue, Suite U, St. Joseph, Missouri 64506 (816) 233-3747. Web: [www.abfse.org](http://www.abfse.org)

NOTE: All courses require a grade of "C" or better and the National Board Examination must be completed before graduation.

The annual passage rate of first-time takers on the National Board Examination (NBE) for the most recent three-year period for this institution and all ABFSE accredited funeral service education programs is posted on the ABFSE web site ([www.abfse.org](http://www.abfse.org)).

### Career Opportunities

The student is eligible to take the state board examination to become a licensed funeral director in California. The student also meets the criteria to take the state embalmer's examination.

### Program Goals and Objectives

- To prepare students to be members of a human services profession
- To prepare students to be members of the community in which they serve
- To be participants in the relationship between bereaved families and those engaged in the funeral service profession
- To offer professional knowledge of and compliance with federal, state provincial/territorial, and local regulatory guidelines
- To be sensitive to the responsibility for public health, safety and welfare in caring for human remains
- To enlarge the background and knowledge of students about the funeral service profession
- To educate students in every phase of funeral service, and to help enable them to develop the proficiency and skills necessary for the profession as defined by the American Board of Funeral Service Education, Inc.
- To educate students concerning the responsibilities of the funeral services profession to the community at large
- To emphasize high standards of ethical conduct
- To provide a curriculum at the post secondary level of instruction
- To encourage student and faculty research in the field of funeral service
- To equip students with information related to the social, legal, psychological, religious and public health issues that are associated with death

- To offer students a comprehensive curriculum that will challenge their academic abilities that are consistent with the curriculum required by the American Board of Funeral Service Education, Inc.
- To prepare students for success on the National Board Examination, as well as, state examinations

### Enrollment Eligibility

*To be eligible for enrollment in the program, the student must meet the following criteria:*

- Graduation from an accredited high school (graduates from outside the United States must have transcripts evaluated by an approved independent agency), or successful completion of General Educational Development (GED) Test or California High School Proficiency Examination (CHSPE).
- BIOL 102 and FSE 100 with a grade of "C" or better.
- Minimum cumulative college GPA of 2.0.
- A Curriculum Planning Summary Sheet completed by an ARC counselor and dated within the semester the enrollment packet is submitted.
- A completed pre-enrollment application.

### Enrollment Process

*Eligible students are selected for the program according to the following steps:*

- Pre-enrollment applications to the program may be obtained from the Health and Education Division Office, the Coordinator of the Funeral Service Education program, or at [www.arc.losrios.edu/fse](http://www.arc.losrios.edu/fse). The Funeral Service Education program currently accepts students once per year for the Spring semester which begins in January. Applications for the Spring semester are available by September 15th and the deadline to submit the application is by the second Friday in December.
- Only students who meet the pre-enrollment requirements and follow the pre-enrollment procedures will be considered for the program.
- Selection is based on a random selection process should the number of applicants exceed available space in the program.
- Students admitted to the Funeral Service Education program are required to have a physical examination, laboratory and licensing agencies inoculations, drug screen, and background check by the completion of the first semester of the program. Students are responsible for any costs incurred related to meeting the health requirements.
- If a minimum number of qualified applicants are not received, enrollment will be delayed until the following semester, at which time, applicants will need to reapply.

**Requirements for Degree** **60.5 Units**

Pre-FSE Semester	
FSE 100	Introduction to Funeral Service ..... 2
BIOL 102	Introduction to Concepts of Human Anatomy and Physiology ..... 4
ENGWR 300	College Composition ..... 3
1st Semester	
FSE 110	Funeral Directing I ..... 2
FSE 160	Funeral Service Law and Ethics ..... 3
BUS 340	Business Law ..... 3
CHEM 130	Chemistry for Funeral Services ..... 4
SPEECH 301 or SPEECH 331	Public Speaking (3) Group Discussion (3) ..... 3
2nd Semester	
FSE 111	Funeral Directing II ..... 2
FSE 140	Pathology ..... 2
FSE 155	Merchandising in the Funeral Service Industry ..... 3
BIOL 130	Microbiology for Funeral Services ..... 3
ACCT 101	Fundamentals of College Accounting ..... 3
3rd Semester	
FSE 120	Embalming I ..... 3
FSE 130	Restorative Art ..... 3.5
FSE 150	Funeral Service Management ..... 3
CISC 300	Computer Familiarization ..... 1
4th Semester	
FSE 121	Embalming II ..... 2
FSE 170	Funeral Services Counseling ..... 3
FSE 297	Internship in Funeral Service Education ..... 5
PSYC 390	Psychology of Death and Dying ..... 3

**Associate Degree Requirements:** The Funeral Service Education Associate in Science (A.S.) Degree may be obtained by completion of the required program, plus general education requirements, plus sufficient electives to meet a 60-unit total. See ARC graduation requirements.

Area: Science and Engineering  
 Dean: Dr. Rina Roy  
 Assistant Dean: Dr. Derrick Booth  
 Phone: (916) 484-8107  
 Counseling: (916) 484-8572

Degree: A.S. - Geography  
 A.S. - Geographic Information Systems  
 Certificate: Geographic Information Systems (GIS)  
 Interdisciplinary Applications  
 revised 4/08

## Geography Degree

The A.S. degree provides students with a solid foundation in geography as well as the standard prerequisites for upper division coursework leading to the baccalaureate degree. The required and elective coursework surveys a broad spectrum of physical geography, cultural geography, geographic information sciences, and related disciplines.

### Career Opportunities

The opportunities for geographers are as varied as the scope of geography itself. Geographers are found throughout the public and private sector, though rarely in positions with the title of Geographer. When combined with appropriate internships and/or other work experience, a baccalaureate degree in geography is excellent preparation for careers such as natural resource management, environmental consulting, urban and regional planning, and elementary and secondary teaching.

### Requirements for Degree 19 Units

GEOG 300	Physical Geography: Exploring Earth's Environmental Systems .....	3
GEOG 301	Physical Geography Laboratory .....	1
GEOG 310	Human Geography: Exploring Earth's Cultural Landscapes	3
GEOG 330	Introduction to Geographic Information Systems (3) .....	3
or GEOG 334	Introduction to Desktop GIS (3)	
or CISC 310	Introduction to Computer Information Science (3)	
PSYC 330	Introductory Statistics for the Behavioral Sciences (3) .....	3
or STAT 301	Introduction to Probability and Statistics (3)	
<b>And a minimum of 6 units from the following:</b> .....		6 <sup>1</sup>
ANTH 310	Cultural Anthropology (3)	
BIOL 352	Conservation Biology (3)	
or BIOL 310	General Biology (4)	
or BIOL 305	Natural History (4)	
ECON 304	Principles of Microeconomics (3)	
or ECON 302	Principles of Macroeconomics (3)	
GEOG 306	Weather and Climate (3)	
GEOG 320	World Regional Geography (3)	
GEOG 322	Geography of California (3)	
GEOG 390	Field Studies in Geography (0.5 - 4)	
GEOL 300	Physical Geology (3)	
GEOL 301	Physical Geology Laboratory (1)	
GEOL 330	Introduction to Oceanography (3)	
GEOL 331	Introduction to Oceanography Lab (1)	
HIST 300	History of Western Civilization (3)	
or HIST 302	History of Western Civilization (3)	
or HIST 327	History of the Chicano/Mexican American (3)	
or HIST 325	History of Asian/Pacific Americans (3)	
or HIST 320	History of the United States: African-American Emphasis (3)	
or HIST 311	History of the United States (3)	
or HIST 310	History of the United States (3)	
HUM 320	Asian Humanities (3)	
PHIL 350	Philosophy of Religion (3)	
POLS 310	Introduction to International Relations (3)	
SOC 300	Introductory Sociology (3)	

<sup>1</sup>A maximum of 2 units from GEOG 390 will be counted toward the degree requirement.

**Associate Degree Requirements:** The Geography Associate in Science (A.S.) Degree may be obtained by completion of the required program, plus general education requirements, plus sufficient electives to meet a 60-unit total. See ARC graduation requirements.

## Geographic Information Systems (GIS) Degree

Geographic Information Systems (GIS) are collections of computers, software applications, and personnel used to capture, store, transform, manage, analyze, and display spatial information. This powerful technology has a wide range of applications in planning and management by government agencies, business, and industry. The A.S. Degree provides a solid technical background in GIS concepts and applications including database design, the Global Positioning System (GPS), cartography, GIS programming, spatial analysis, and interdisciplinary applications of the technology. The degree also includes ARC General Education and elective courses, which are required for graduation. Completion of the degree requires "real-world" work experience in GIS. Refer to the department web site for examples of course sequencing.

### Career Opportunities

According to an Environmental Systems Research Institute survey, over 80 percent of the data used for decision-making in government and industry has a spatial component. New areas of rapid growth are in criminal justice, homeland security, marketing, retail site location, resource allocation, banking, health-care planning, disease control, insurance, real estate, and disaster preparedness, management, and response. Most local, state, and federal government agencies use GIS and maintain a staff of GIS technicians, analysts, and professionals. GIS is also commonly used in the private sector by businesses, planners, architects, foresters, geologists, environmental scientists, archaeologists, real estate professionals, marketers, sociologists, and bankers. The growth in application areas of GIS and of GIS as a specialized discipline represents a new way for individuals, agencies, and businesses to view the world. The expansion of jobs in GIS is anticipated to continue for many years to come. It is likely that all students, regardless of their particular field of interest, will at least be exposed to and probably use a GIS in some capacity in the years ahead. The purpose of American River College's GIS program is to prepare students for careers in this expanding technological field.

### Requirements for Degree 39 - 42 Units

GEOG 330	Introduction to Geographic Information Systems .....	3
GEOG 334	Introduction to GIS Software Applications .....	3
GEOG 340	Cartographic Design for GIS .....	3
GEOG 342	Introduction to Remote Sensing and Digital Image Processing .....	3
GEOG 344	Spatial Analysis and Modeling in GIS .....	3
GEOG 350	Data Acquisition in GIS .....	3
GEOG 354	Introduction to the Global Positioning System (GPS) .....	1
GEOG 360	Database Design and Management in GIS .....	3
GEOG 498	Work Experience in Geography .....	1 - 4
CISA 320	Introduction to Database Management .....	1
CISP 372	Beginning Visual Basic for Applications Programming .....	1

**And a minimum of 15 units from the following:** ..... 15

GEOG 362	Advanced Database Design and Management in GIS (3)
GEOG 375	Introduction to GIS Programming (3)
GEOG 376	Intermediate GIS Programming (3)
<b>GEOG 380</b>	<b>Advanced GIS Software Applications (3)</b>
GEOG 385	Introduction to Web Based GIS Application Development (3)
GEOG 386	Using GIS for Disaster Management (3)

**And a minimum of 9 units from the following:** ..... 9

GEOG 362	Advanced Database Design and Management in GIS (3)
GEOG 375	Introduction to GIS Programming (3)
GEOG 376	Intermediate GIS Programming (3)
<b>GEOG 380</b>	<b>Advanced GIS Software Applications (3)</b>
GEOG 385	Introduction to Web Based GIS Application Development (3)
GEOG 386	Using GIS for Disaster Management (3)

**Associate Degree Requirements:** The Geographic Information Systems (GIS) Associate in Science (A.S.) Degree may be obtained by completion of the required program, plus general education requirements, plus sufficient electives to meet a 60-unit total. See ARC graduation requirements.

## Geographic Information Systems (GIS) - Certificate

Geographic Information Systems (GIS) are collections of computers, software applications, and personnel used to capture, store, transform, manage, analyze, and display spatial information. This powerful technology has a wide range of applications in planning and management by government agencies, business, and industry. The certificate provides a solid technical background in GIS concepts and applications including database design, the Global Positioning System (GPS), cartography, GIS programming, spatial analysis, and interdisciplinary applications of the technology. Completion of the certificate requires “real-world” work experience in GIS. Refer to the department web site for examples of course sequencing.

### Career Opportunities

According to an Environmental Systems Research Institute survey, over 80 percent of the data used for decision-making in government and industry has a spatial component. New areas of rapid growth are in criminal justice, homeland security, marketing, retail site location, resource allocation, banking, health-care planning, disease control, insurance, real estate, and disaster preparedness, management, and response. Most local, state, and federal government agencies use GIS and maintain a staff of GIS technicians, analysts, and professionals. GIS is also commonly used in the private sector by businesses, planners, architects, foresters, geologists, environmental scientists, archaeologists, real estate professionals, marketers, sociologists, and bankers. The growth in application areas of GIS and of GIS as a specialized discipline represents a new way for individuals, agencies, and businesses to view the world. The expansion of jobs in GIS is anticipated to continue for many years to come. It is likely that all students, regardless of their particular field of interest, will at least be exposed to and probably use a GIS in some capacity in the years ahead. The purpose of American River College’s GIS program is to prepare students for careers in this expanding technological field.

### Requirements for Certificate 33-36 Units

GEOG 330	Introduction to Geographic Information Systems	3
GEOG 334	Introduction to GIS Software Applications	3
GEOG 340	Cartographic Design for GIS	3
GEOG 342	Introduction to Remote Sensing and Digital Image Processing	3
GEOG 344	Spatial Analysis and Modeling in GIS	3
GEOG 350	Data Acquisition in GIS	3
GEOG 354	Introduction to the Global Positioning System (GPS)	1
GEOG 360	Database Design and Management in GIS	3
GEOG 498	Work Experience in Geography	1 - 4
CISA 320	Introduction to Database Management	1
CISP 372	Beginning Visual Basic for Applications Programming	1

Area: Fine & Applied Arts  
 Dean: Dr. David Newnham  
 Phone: (916) 484-8433  
 Counseling: (916) 484-8572

Degree: **A.A. - Interior Planning and Design  
 revised 3/08**  
 Certificates: **Kitchen and Bath Design  
 Interior Retail Merchandising  
 Para-Professional Interior Design Assistant  
 revised 3/08**

## Interior Planning and Design Degree

The A.A. degree in interior planning and design provides a foundation of education and skills for students in the expanding field of interior design. Topics include space planning, building and life-safety codes, and the Americans with Disabilities Act (ADA). Additionally, it covers reading construction documents, and architectural and furniture history.

### Career Opportunities

The field of interior design offers a variety of career options, including residential design by itself or with a specialty of kitchen and bath design, transgenerational design, home office and theater design. It also offers commercial design, which includes space planning, hospitality (restaurant, hotel, cruise ship) design, set design, historical and adaptive re-use design. It also offers commercial design opportunities, which include space planning, hospitality (restaurant, hotel, cruise ship) design, set design, historical and adaptive re-use design. (Additional career opportunities are available as product designers, retailers, buyers, manufacturer's representatives, and facilities managers.)

### Requirements for Degree 47 Units

ART 320	Design: Fundamentals	3
FASHN 320	Textiles	3
IDES 300	Fundamentals of Interior Design	3
IDES 310	History of Interior Architecture and Furnishings I	3
IDES 312	History of Interior Architecture and Furnishings II	3
IDES 322	Materials of Interior Design	3
IDES 324	Interior Design Business Practices	3
IDES 326	Interior Design Sales	3
IDES 330	Beginning Interior Design Studio	3
IDES 332	Interior Illustration and Rendering	3
IDES 334	Interior Environment and Space Planning	3
IDES 340	Beginning CADD for Interior Design	3
IDES 341	Intermediate CADD for Interior Design	3
IDES 350	Codes and Universal Access for Interior Design	2
IDES 351	Codes and Universal Access Lab	1
IDES 354	Reading Construction Documents	2

### And a minimum of 3 units from the following:.....3

ART 300	Elementary Drawing and Composition (3)	
ART 323	Design: Color Theory (3)	
ARTH 302	Art: Stone Age Through the Middle Ages (3)	
ARTH 308	Renaissance Tradition in Art (3)	
ARTH 310	Modern Art (3)	
ARTH 322	Art History of the Non-Western World (3)	
DESGN 100	Introduction to Computer Aided Drafting and Design (CADD) (3)	
DESGN 320	Three Dimensional Graphics and Design (3)	
IDES 110	Estimating and Calculating for Interior Design (3)	
IDES 497	Internship in Interior Design (1 - 4)	

**Associate Degree Requirements:** The Interior Planning and Design Associate in Arts (A.A.) Degree may be obtained by completion of the required program, plus general education requirements, plus sufficient electives to meet a 60-unit total. See ARC graduation requirements.

## Kitchen and Bath Design Certificate

This certificate covers the design of efficient and aesthetic kitchens and baths, including space considerations, equipment, materials, building codes and human factors. Designing for clients with special needs, working with challenging spaces, and theme design are included. Residential lighting is included. This certificate facilitates the needs of those trying to pass the National Kitchen and Bath Association certification exam.

### Career Opportunities

Students completing this certificate can have careers in the kitchen and bath industry. It might include being a designer, a product representative, or showroom work.

### Requirements for Certificate 29 Units

IDES 330	Beginning Interior Design Studio	3
IDES 334	Interior Environment and Space Planning	3
IDES 341	Intermediate Cadd for Interior Design	3
IDES 342	CADD for Kitchen and Bath Design	2
IDES 350	Codes and Universal Access for Interior Design	2
IDES 354	Reading Construction Documents	2
IDES 361	Beginning Kitchen Design	3
IDES 362	Advanced Kitchen Design	3
IDES 375	Beginning Bath Design	3
IDES 376	Advanced Bath Design	2
<b>And a minimum of 3 units from the following:</b>		<b>3</b>
IDES 498	Work Experience in Interior Design (1 - 4)	

## Interior Retail Merchandising Certificate

This certificate provides a foundation of education and skills for students in the expanding field of interior design. Topics include the materials of interior design, architectural and furniture history, and business practices.

### Career Opportunities

Interior design merchandising offers a variety of career options in residential design. Additional career opportunities are available as product designers, retailers, buyers, manufacturer's representatives, and facilities managers.

### Requirements for Certificate 24 Units

ART 320	Design: Fundamentals	3
FASHN 320	Textiles	3
IDES 300	Fundamentals of Interior Design	3
IDES 310	History of Interior Architecture and Furnishings I	3
IDES 322	Materials of Interior Design	3
IDES 324	Interior Design Business Practices	3
IDES 330	Beginning Interior Design Studio	3
IDES 340	Beginning CADD for Interior Design	3



## Para-Professional Interior Design Assistant Certificate revised 3/08

This certificate provides a foundation of education and skills for students in the expanding field of interior design. Topics include space planning, building and life-safety codes, the Americans with Disabilities Act (ADA), as well as, reading construction documents, architectural and furniture history. This degree includes an internship within the interior design industry.

### Career Opportunities

The field of interior design offers a variety of career options, including residential design by itself or with a specialty of kitchen and bath design, transgenerational design, home office and theater design. It also offers commercial design opportunities, which include space planning, hospitality (restaurant, hotel, cruise ship) design, set design, historical and adaptive re-use design. Additional career opportunities are available as product designers, retailers, buyers, manufacturer's representatives, and facilities managers.

### Requirements for Certificate 47 Units

ART 320	Design: Fundamentals .....	3
FASHN 320	Textiles .....	3
IDES 110	Estimating and Calculating for Interior Design .....	3
IDES 300	Fundamentals of Interior Design .....	3
IDES 310	History of Interior Architecture and Furnishings I .....	3
IDES 312	History of Interior Architecture and Furnishings II .....	3
IDES 322	Materials of Interior Design .....	3
IDES 324	Interior Design Business Practices .....	3
IDES 330	Beginning Interior Design Studio .....	3
IDES 332	Interior Illustration and Rendering .....	3
IDES 334	Interior Environment and Space Planning .....	3
IDES 340	Beginning CADD for Interior Design .....	3
IDES 341	Intermediate CADD for Interior Design .....	3
IDES 350	Codes and Universal Access for Interior Design .....	2
IDES 351	Codes and Universal Access Lab .....	1
IDES 354	Reading Construction Documents .....	2

### And a minimum of 3 units from the following:.....3

ART 300	Elementary Drawing and Composition (3)
ART 323	Design: Color Theory (3)
ARTH 302	Art: Stone Age Through the Middle Ages (3)
ARTH 308	Renaissance Tradition in Art (3)
ARTH 310	Modern Art (3)
ARTH 322	Art History of the Non-Western World (3)
DESGN 100	Introduction to Computer Aided Drafting and Design (CADD) (3)
DESGN 320	Three Dimensional Graphics and Design (3)
IDES 497	Internship in Interior Design (1 - 4)
IDES 326	Interior Design Sales (3)

Area: Humanities  
 Dean: Lisa Aguilera Lawrenson  
 Phone: (916) 484-8653  
 Counseling: (916) 484-8572

Degree: **A.A. - Journalism and Mass Communication**  
 revised 3/07

## Journalism and Mass Communication Degree

This program is a comprehensive exposure to mass communication and communications media. Students learn the inner workings of a variety of media, including print, broadcast and Web. Courses cover all areas of news writing, public relations, graphics, design, photojournalism, and newspaper and Web production.

### Career Opportunities

This program gives students the opportunity to prepare for entry-level positions as writers, reporters, photographers, designers, copy editors, and fact checkers for small- and mid-size newspapers, newsletters, or magazines; newsletter or in-house publication writers, editors, and designers; copy editors for all communications media; technical writers or editors; desktop publishers or designers; or other positions that include writing, editing, photography, and/or page layout and design.

### Requirements for Degree 29 Units

ART 411	Photography .....	3
HIST 311	History of the United States .....	3
JOUR 300	Newswriting and Reporting .....	3
JOUR 310	Mass Media and Society .....	3
JOUR 360	Photojournalism .....	3
JOUR 404	Editing and Production .....	3
PHIL 300	Introduction to Philosophy (3) .....	3
or PHIL 310	Introduction to Ethics (3)	
POLS 332	Law and Society (3) .....	3
or BUS 345	Law and Society (3)	
<b>And a minimum of 6 units from the following: .....</b>		<b>6<sup>1</sup></b>
JOUR 401	College Newspaper Production (2)	
<b>And a minimum of 2 units from the following: .....</b>		<b>2</b>
JOUR 405	Publications Production Skills Lab (0.5 - 3)	

<sup>1</sup>JOUR 401 must be taken three times.

**Associate Degree Requirements:** The Journalism and Mass Communication Associate in Arts (A.A.) Degree may be obtained by completion of the required program, plus general education requirements, plus sufficient electives to meet a 60-unit total. See ARC graduation requirements.

Area: Health & Education  
 Dean: Sheryl Gessford  
 Coordinator: Dr. Grant Goold  
 Phone: (916) 484-8902  
 Counseling: (916) 484-8572

Degree: **A.S. - Paramedic**  
**revised 3/08**  
 Certificate: **Paramedic**  
**revised 3/08**

### Paramedic Degree and Certificate

Paramedicine is an allied health specialty whose practitioners respond to emergencies before a patient reaches a hospital, rendering basic and advanced medical treatment before and during transport to a medical facility. Classroom, clinical and field internship training prepares paramedics to assess and treat a wide variety of medical emergencies. The knowledge, skills and experience gained through the paramedic program allows students to meet the responsibilities outlined in the Department of Transportation's National Standard Paramedic Training Curriculum.

### Career Opportunities

The ARC Paramedic program is designed to prepare the student for licensure as a paramedic, working for a fire department, rescue squad, private provider, industry, clinic or hospital.

### Enrollment Eligibility

*To be eligible for enrollment in the program, the student must meet the following criteria:*

- Graduation from an accredited high school in the United States, or successful completion of General Education Development (GED) or the California High School Proficiency Exam (CHSPE).
- Students with a high school diploma from a school outside the United States must have transcripts evaluated by an approved independent agency. Such cases will be evaluated on an individual basis.
- A cumulative college GPA of 2.0 and a grade of "C" or better in BIOL 102, or BIOL 430 and BIOL 431, or other college human anatomy and physiology course with a lab which includes all human systems; a grade of "C" or better in NURSE 320 or PMED 105.
- Current curriculum planning summary sheet within the semester in which the pre-enrollment packet is being submitted.
- Current certification as an Emergency Medical Technician-Basic and one year verified EMS experience.

### Enrollment Process

*Eligible students are selected for the program according to the following steps:*

- Pre-enrollment applications to the program may be obtained from the Health and Education Division office or at [www.arc.losrios.edu/edhealth/paramed.html](http://www.arc.losrios.edu/edhealth/paramed.html). Applications for Spring admission will be available by September and must be submitted to the division office no later than the first Friday in December by 4:00 p.m. Please refer to the Paramedic Information Sheet for the most current information.
- Only students who meet the educational requirements and follow the pre-enrollment procedures will be considered for the program. Meeting all of these requirements does not guarantee enrollment in the program.
- Class size is limited. If the pre-enrollment pool is greater

than the program can accept, students are chosen based on a computerized random selection process from among the qualified candidates.

- Students accepted into the Paramedic program are required to have a physical examination, inoculations, drug screen, background check, and malpractice insurance prior to entering the second semester.

### Requirements for Degree Major or Certificate 36.5-43.5 Units

BIOL 102	Intro to Concepts of Human Anatomy and Physiology (4)	4 - 10
or [BIOL 430	Anatomy and Physiology (5)	
and BIOL 431	Anatomy and Physiology (5)]	
PMED 105	Prehospital Calculations (0.5)	0.5 - 1.5
or NURSE 320	Medical Dosage Calculations (1.5)	
PMED 110	Introduction to Advanced Prehospital Care	12
or [ PMED 111	Advanced Prehospital Care: Preparatory and Airway Management (4.5)	
and PMED 112	Advanced Prehospital Care: General Medical Emergencies (2.5)	
and PMED 113	Advanced Prehospital Care: Trauma and Pediatric Care (5) ]	
PMED 120	Clinical Internship	6
PMED 130	Prehospital Field Internship	14

**Associate Degree Requirements:** The Paramedic Associate in Science (A.S.) Degree may be obtained by completion of the required program, plus general education requirements, plus sufficient electives to meet a 60-unit total. See ARC graduation requirements.

Area: Humanities  
 Dean: Lisa Aguilera Lawrenson  
 Phone: (916) 484-8653  
 Counseling: (916) 484-8572

Degree: A.A. - Sign Language Studies: Business  
 A.A. - Sign Language Studies: Human Services  
 A.A. - Interpreter Preparation Program  
 Certificates: Sign Language Studies: Business  
 Sign Language Studies: Human Services  
 Sign Language Studies: Interpreter Preparation Program  
 revised 12/07

### Sign Language Studies: Business Degree and Certificate

The program in Sign Language Studies: Business provides an introductory overview of American Sign Language, the Deaf community in a cultural context and the psychosocial dynamics of people who want to pursue training in business management while working in the Deaf community.

Requirements for Degree or Certificate		40 Units
HSER 300	Introduction to Human Services .....	3
MGMT 372	Human Relations and Organizational Behavior.....	3
MGMT 300	Introduction to Modern Management (3) .....	3
or MGMT 362	Techniques of Management (3)	
MGMT 360	Management Communication .....	3
PSYC 300	General Principles (3) .....	3
or PSYC 305	Personal Growth and Adjustment (3)	
SILA 305	American Sign Language 1 .....	4
SILA 306	American Sign Language 2 .....	4
SILA 315	American Sign Language 3 .....	4
SILA 316	American Sign Language 4 .....	4
SILA 330	Impact of Deafness .....	3
SILA 332	Educating Deaf People .....	3
<b>And a minimum of 3 units from the following:</b> .....		<b>3</b>
SILA 498	Work Experience in Sign Language Studies (1 - 4)	

**Associate Degree Requirements:** The Sign Language Studies: Business Associate in Arts (A.A.) Degree may be obtained by completion of the required program, plus general education requirements, plus sufficient electives to meet a 60-unit total. See ARC graduation requirements.

### Sign Language Studies: Human Services Degree and Certificate

The program in Sign Language Studies: Human Services provides an introductory overview of American Sign Language, the Deaf community in a cultural context and the psychosocial dynamics of people working in the Deaf community. The certificate also emphasizes development of skills related to paraprofessional services in an individual or group setting in an educational or social services agency which serves deaf clients.

Requirements for Degree or Certificate		40 Units
HSER 300	Introduction to Human Services .....	3
PSYC 300	General Principles (3) .....	3
or PSYC 305	Personal Growth and Adjustment (3)	
PSYC 370	Human Development: A Life Span .....	3
SILA 305	American Sign Language 1 .....	4
SILA 306	American Sign Language 2 .....	4
SILA 315	American Sign Language 3 .....	4
SILA 316	American Sign Language 4 .....	4
SILA 330	Impact of Deafness .....	3
SILA 332	Educating Deaf People .....	3
<b>And a minimum of 3 units from the following:</b> .....		<b>3</b>

SILA 498	Work Experience in Sign Language Studies (1 - 4)	
<b>And a minimum of 6 units from the following:</b> .....		
ECE 312	Child Development (3)	
or PSYC 372	Child Development (3)	
ENGED 320	Service Learning: Tutoring Elementary Students in Reading (3)	
HSER 330	Issues of Diverse Populations (3)	
or PSYC 365	Issues of Diverse Populations (3)	
PSYC 340	Abnormal Behavior (3)	

**Associate Degree Requirements:** The Sign Language Studies: Human Services Associate in Arts (A.A.) Degree may be obtained by completion of the required program, plus general education requirements, plus sufficient electives to meet a 60-unit total. See ARC graduation requirements.

### Interpreter Preparation Program Degree

**REVISED 12/07**

The Sign Language Studies Interpreting program provides an integrated series of coursework in American Sign Language (ASL) and ASL/English interpretation to prepare students for entry-level positions. A foundation in ASL discourse and interpretation is established through theoretical models. The emphasis is on the practical application of these models and knowledge in the areas of human relations, language skills, interpreting skills, and professionalism. The general education requirements complete the sequence of coursework to attain the A.A. degree.

#### Career Opportunities

Employment in the field for American Sign Language/English interpreters is excellent locally, regionally, and nationally. The qualified American Sign Language/English interpreter enjoys a well compensated, rewarding, highly flexible career, which should continue in the future. This field is expanding; growth in the job market is projected.

#### Enrollment Eligibility

*To be eligible for enrollment in the program, the student must meet the following criteria:*

- Graduation from an accredited high school in the United States, or successful completion of the General Educational Development (GED) Test or California High School Proficiency Examination (CHSPE) prior to time of application: a) Students with a high school diploma from a school outside the United States must have transcripts evaluated by a National Association of Credential Evaluation Services (NACES) approved independent agency. Such cases will be evaluated on an individual basis. b) Students who possess an Associate of Arts/Associate of Science degree or higher from a regionally accredited college are exempt from the educational requirement stated above. c) Students who have attended college outside the United States must have transcripts evaluated by a NACES ap-

proved independent agency, demonstrating AA/AS degree or higher. Such cases will be evaluated on an individual basis.

- SILA 316: ASL 4 and SILA 317: ASL Linguistics, or the equivalents, with a grade of “C” or better.
- Eligibility for ENGRD 310 or 312.
- A completed pre-enrollment application.

**Enrollment Process**

*Eligible students are selected for the program according to the following steps:*

- Pre-enrollment applications and deadlines for the Interpreter Preparation Program (IPP) are available from the Humanities Division, the coordinator of the IPP or at the ARC IPP website. The Interpreter Preparation Program currently accepts students once per year for the Fall semester which begins in August. Applications for the Fall semester are available by February 15th and the deadline to submit the application is by the second Friday in April.
- Only qualified applicants who meet the educational requirements and follow the pre-enrollment procedures will be considered for the program. Meeting all these requirements does not guarantee acceptance into the program.
- Upon completion and acceptance of the pre-enrollment application, students will participate in an interview/screening process conducted by the Interpreter Preparation Program. Should the number of qualified applicants exceed available space in the program, selection will be based on the rankings from the interview/screening process.

Requirements for Degree		50 Units
SILA 316	American Sign Language 4 .....	4
SILA 317	ASL Linguistics .....	3
SILA 318	American Sign Language 5 .....	4
SILA 320	American Sign Language Discourse .....	3
SILA 330	Impact of Deafness .....	3
SILA 332	Educating Deaf People .....	3
INTRP 300	Ethics and Professional Standards of Interpreting .....	3
INTRP 303	Orientation to the Interpreting Profession .....	3
INTRP 305	ASL to English Interpreting .....	3
INTRP 307	English to ASL Interpreting .....	3
INTRP 310	Introduction to Deaf Blind Interpreting .....	0.5
INTRP 312	Introduction to Oral Transmission .....	0.5
INTRP 320	Simultaneous Interpreting .....	4
INTRP 325	Transliteration .....	4
INTRP 350	Observation Supervision .....	0.5
INTRP 352	Mock Interpreting I .....	1
INTRP 354	Mock Interpreting II .....	1
INTRP 356	Fieldwork in Interpretation .....	2.5
<b>And a minimum of 4 units from the following:</b> .....		<b>4</b>
INTRP 314	Introduction to Multicultural Communication (0.5)	
INTRP 323	Interactive Interpreting (2)	
INTRP 330	Introduction to Educational Interpreting, K-12 (1)	
INTRP 332	Introduction to Educational Interpreting, Post Secondary (1)	
INTRP 334	Introduction to Medical Interpreting (1)	
INTRP 336	Introduction to Performing Arts Interpreting (1)	
INTRP 338	Introduction to Social Services and Employment Interpreting (1)	
INTRP 340	Introduction to Telephone, Television and Remote Relay Interpreting (0.5)	
INTRP 342	Introduction to Religious Interpreting (0.5)	
INTRP 344	Introduction to Working with a Certified Deaf Interpreter (0.5)	
INTRP 349	Signing for Dependency Situations (0.5)	

**Associate Degree Requirements:** The Sign Language Studies: Interpreter Preparation Associate in Arts (A.A.) Degree may be obtained by completion of the required program, plus general education requirements, plus sufficient electives to meet a 60-unit total. See ARC graduation requirements.

**Interpreter Preparation Program Certificate**

**REVISED 12/07**

The Sign Language Studies Interpreting program provides an integrated series of coursework in American Sign Language (ASL) and ASL/English interpretation to prepare students for entry-level positions. A foundation in ASL discourse and interpretation is established through theoretical models. The emphasis is on the practical application of these models and knowledge in the areas of human relations, language skills, interpreting skills and professionalism.

**Career Opportunities**

Employment in the field for qualified American Sign Language/English interpreters is excellent locally, regionally, and nationally. The qualified American Sign Language/English interpreter enjoys a well compensated, rewarding, highly flexible career, which should continue in the future. This field is expanding; growth in the job market is projected.

**Enrollment Eligibility**

*To be eligible for enrollment in the program, the student must meet the following criteria:*

- Graduation from an accredited high school in the United States, or successful completion of the General Educational Development (GED) Test or California High School Proficiency Examination (CHSPE) prior to time of application: a) Students with a high school diploma from a school outside the United States must have transcripts evaluated by a National Association of Credential Evaluation Services (NACES) approved independent agency. Such cases will be evaluated on an individual basis. b) Students who possess an Associate of Arts/Associate of Science degree or higher from a regionally accredited college are exempt from the educational requirement stated above. c) Students who have attended college outside the United States must have transcripts evaluated by a NACES approved independent agency, demonstrating AA/AS degree or higher. Such cases will be evaluated on an individual basis.
- SILA 316: ASL 4 and SILA 317: ASL Linguistics, or the equivalents, with a grade of “C” or better.
- Eligibility for ENGRD 310 or 312.
- A completed pre-enrollment application.

**Enrollment Process**

*Eligible students are selected for the program according to the following steps:*

- Pre-enrollment applications and deadlines for the Interpreter Preparation Program (IPP) are available from the Humanities Division, the coordinator of the IPP or at the ARC IPP website. The Interpreter Preparation Program currently accepts students once per year for the Fall semester which begins in August. Applications for the Fall semester are available by February 15th and the deadline to submit the application is by the second Friday in April.
- Only qualified applicants who meet the educational requirements and follow the pre-enrollment procedures will

be considered for the program. Meeting all these requirements does not guarantee acceptance into the program.

- Selection is based on a random selection process should the number of applicants exceed available space in the program.
- Upon completion and acceptance of the pre-enrollment application, students will participate in an interview/screening process conducted by the Interpreter Preparation Program. Should the number of qualified applicants exceed available space in the program, selection will be based on the rankings from the interview/screening process.

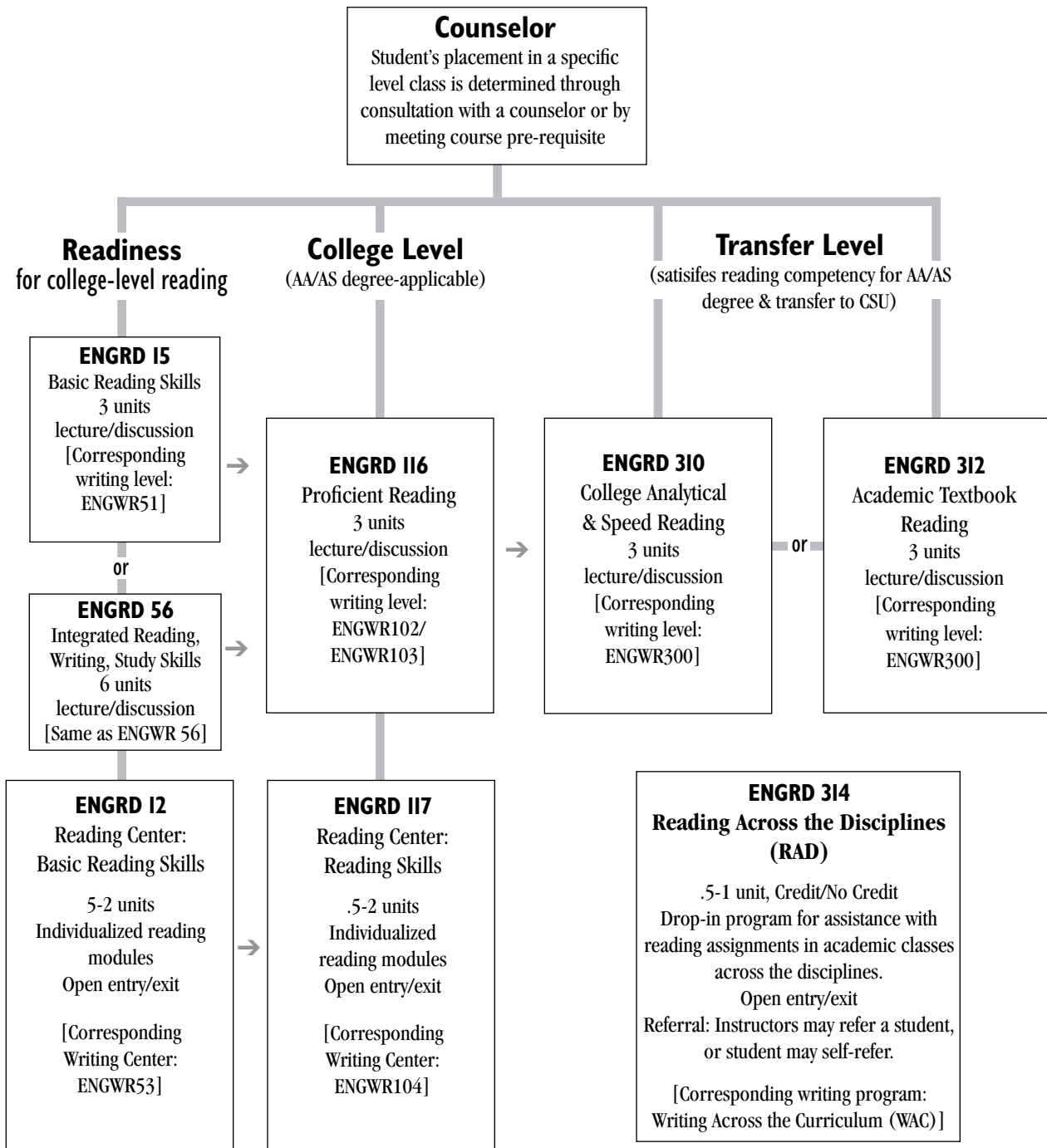
Requirements for Certificate	50 Units
<del>SILA 305</del> — American Sign Language 1	<del>4</del>
<del>SILA 306</del> — American Sign Language 2	<del>4</del>
<del>SILA 315</del> — American Sign Language 3	<del>4</del>
SILA 316	American Sign Language 4 4
SILA 317	ASL Linguistics 3
SILA 318	American Sign Language 5 4
SILA 320	American Sign Language Discourse 3
SILA 330	Impact of Deafness 3
SILA 332	Educating Deaf People 3
INTRP 300	Ethics and Professional Standards of Interpreting 3
<del>INTRP 303</del>	<del>Orientation to the Interpreting Profession 3</del>
INTRP 305	ASL to English Interpreting 3
INTRP 307	English to ASL Interpreting 3
INTRP 310	Introduction to Deaf Blind Interpreting 0.5
INTRP 312	Introduction to Oral Transmission 0.5
INTRP 320	Simultaneous Interpreting 4
INTRP 325	Transliteration 4
<del>INTRP 350</del>	<del>Observation Supervision 0.5</del>
INTRP 352	Mock Interpreting I 1
INTRP 354	Mock Interpreting II 1
INTRP 356	Fieldwork in Interpretation 2.5
<b>And a minimum of 3 units from the following: 3</b>	
<del>SILA 498</del> — Work Experience in Sign Language Studies (1–4)	<del>3</del>
<b>And a minimum of 3 units from the following: 3</b>	
<del>INTRP 498</del> — Work Experience in Sign Language Studies – Interpreting (1–4)	<del>4</del>
<b>And a minimum of 4 units from the following: 4</b>	
INTRP 314	Introduction to Multicultural Communication (0.5)
<del>INTRP 323</del>	<del>Interactive Interpreting (2)</del>
INTRP 330	Introduction to Educational Interpreting, K-12 (1)
INTRP 332	Introduction to Educational Interpreting, Post Secondary (1)
INTRP 334	Introduction to Medical Interpreting (1)
INTRP 336	Introduction to Performing Arts Interpreting (1)
INTRP 338	Introduction to Social Services and Employment Interpreting (1)
INTRP 340	Introduction to Telephone, Television and Remote Relay Interpreting (0.5)
INTRP 342	Introduction to Religious Interpreting (0.5)
INTRP 344	Introduction to Working with a Certified Deaf Interpreter (0.5)
<del>INTRP 346</del> — Specialized Vocabulary: Math and Computers (0.5)	<del>0.5</del>
INTRP 349	Signing for Dependency Situations (0.5)

0

\*The Interpreting Certificate cannot be completed in one year.

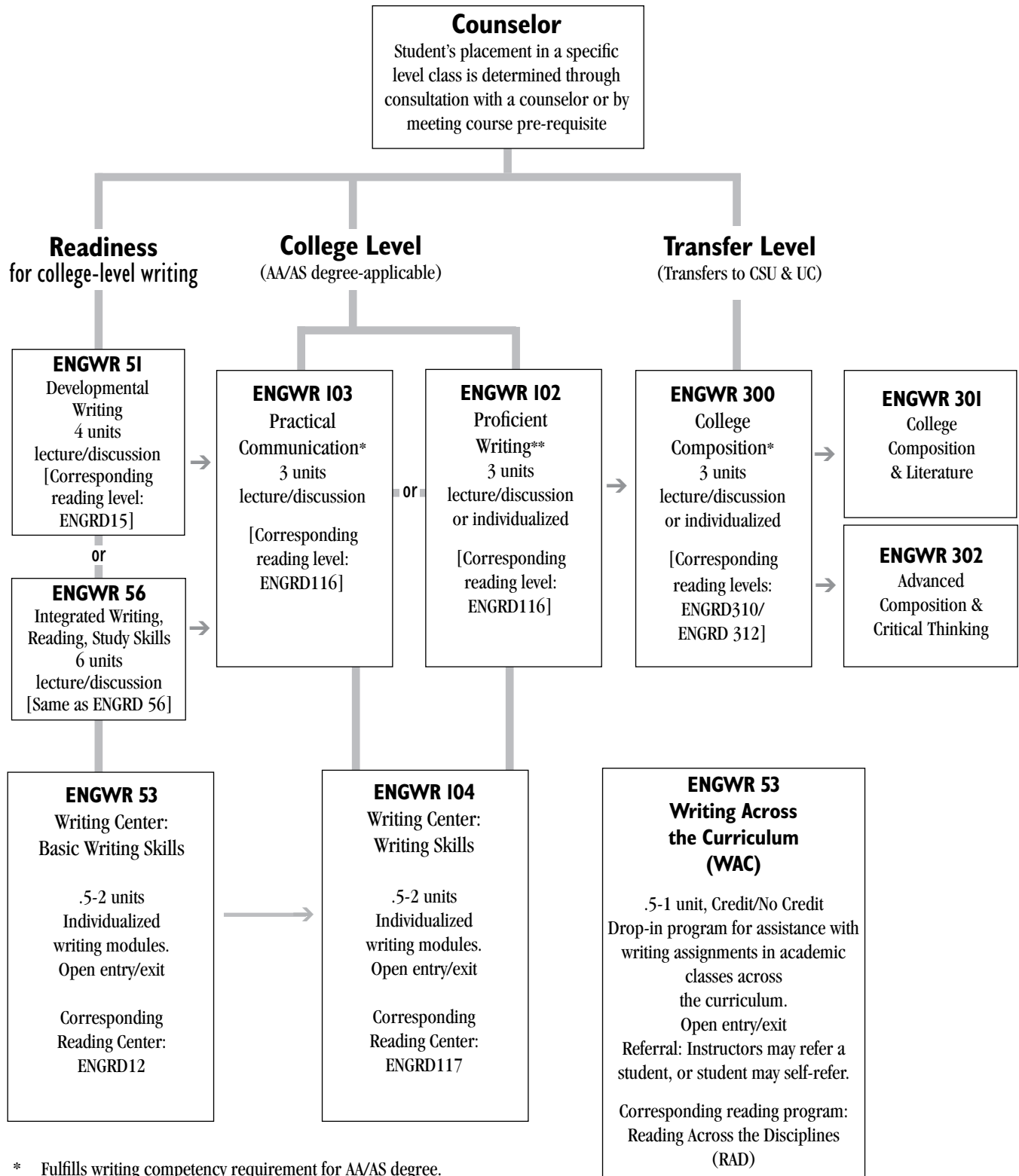
# english reading courses

with corresponding writing courses



# english composition courses

with corresponding reading courses

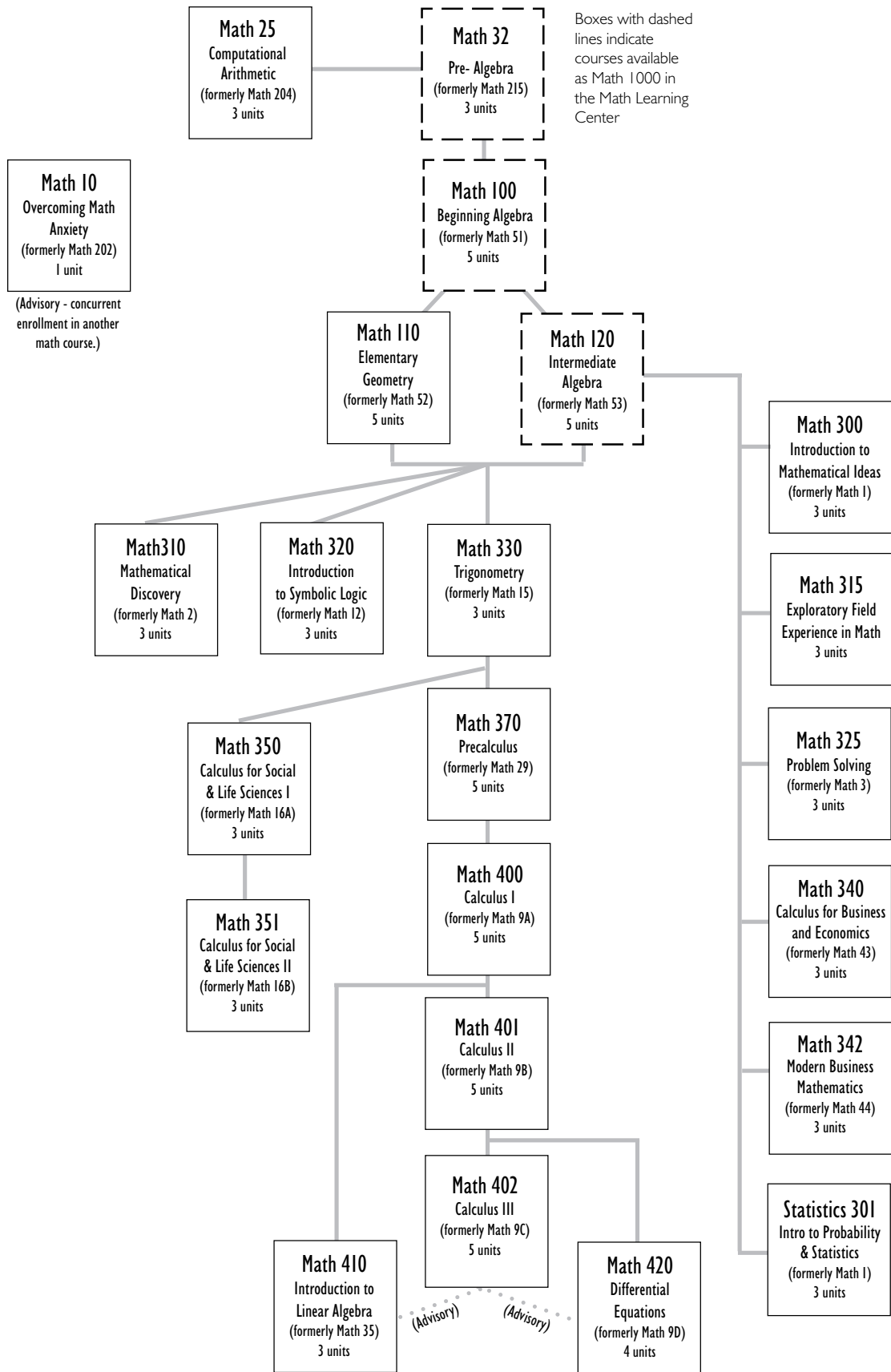


\* Fulfills writing competency requirement for AA/AS degree.

\*\* Pre-requisite for ENGWR300



# mathematics courses









**American River College**

4700 College Oak Drive  
Sacramento, CA 95841-4286

[www.arc.losrios.edu](http://www.arc.losrios.edu)  
(916) 484-8011

Los Rios Community College District