



Henderson Fire Department

Company Sets & Reps

Date: July 2010

Topic: MCI

Please document in Sunpro using the code [SR 0710-02](#)



Overview

The multi-casualty incident is a unique call which can come in many forms. The officer must approach this event the same as any other emergency by applying the command sequence based on our overall incident priorities; firefighter safety, life safety, incident stabilization, and property conservation.

- The Henderson Fire Department defines a multi-casualty incident as one that has 4 or more patients.
- MCI's come in many different forms, each one having its own hazards and concerns. MVA's, fights, shootings, other acts of violence, large scale hazardous exposures, train crashes, plane crashes, fires, bus accidents, explosions, collapses, floods, etc. etc. the possibilities are endless. To all, we must apply the first rule of EMS: **"Is my scene safe."**
- Additional resources-- There are a variety of tools to help officers make good estimations on resources; one crew per car, a minimum of one crew per division/group or unit. If it is clear that you will need significant help, you have 2 easy options to achieve a standardized response. First, is to request a **"Two and One Medical"**. This will get you a total of 2 engines, 2 rescues, 1 truck and 2 BC's. For larger problems you can request a **"First Alarm Medical"**, which consists of 4 engines, 3 rescues 1 truck and 2 BC's.
- In addition to workers, the IC needs to request the correct amount of patient transportation vehicles. One immediate patient per ambulance or helicopter. Two delayed patients per ambulance or helicopter. Three minor patients per ambulance.
- ICS Assignments – The basic initial response organization from ICS for EMS consists of an Incident Commander, a Rescue/Extrication Group, a Medical Group made up of a Triage Unit & Treatment Unit, and a Transportation Group.

Company Monthly Sets & Reps

The following questions are used to assist the first due Company Officer to manage the emergency incident. For the scenario assume the role of the first due company. The overall goal is the consistent and systematic identification of standard conditions and then to apply standard actions to produce standard outcomes. You may further discuss your possible responsibilities and thought process if you were a later arriving unit.

1. Provide dispatch information to crew members: **E83, R83, B8 be enroute to the jail expansion for a construction accident. Map #3435.67. The PR sts. there has been a scaffold collapse and there are multiple workers with injuries. The PR will meet you on the Texas side of the project.**

Utilize map page and target map.

- a) Describe pre-arrival actions and considerations (cab work).
- b) Consider approach, apparatus placement and staging.

2. Show arrival picture.

3. Based on your size-up give a Brief Initial Report (BIR).

- 1) *Unit designation (Who am I?)*
- 2) *Incident Address (Where am I?)*
- 3) *Assume and name command (Who is in command?)*
- 4) *Brief description of the situation (What do I have?)*
- 5) *Action being taken and strategy declaration (What am I doing?)*
- 6) *State any immediate needs from incoming units or dispatch (What do I need?)*

“Control E83 is on scene at the jail. We will be establishing Texas Command. We have a scaffolding collapse with multiple patients trapped. E83 will be securing hazards and performing triage. Dispatch a first alarm medical and the TRT.

4. Crew Instructions

- FF/PM to perform initial triage
- Engineer to assess hazards

5. Triage Report

“We have 5 immediates, 1 delayed patient and 4 walking wounded. 2 immediates are trapped under the scaffolding and we will need some stabilization prior to removal.

6. Resource Needs

- Make good estimations as to how much help you will need. Several crews will be required for Rescue/Extrication – to get patients out of the cars and taken to the Medical Group. You will need additional crews to operate medical Group. You will also need someone in charge of Transportation. In addition to workers, the IC needs to request the correct number of transportation vehicles. One immediate patient per ambulance or helicopter, two delayed patients per ambulance or helicopter, and three minor patients per ambulance.
- If utilizing private ambulances, consider requesting a supervisor.

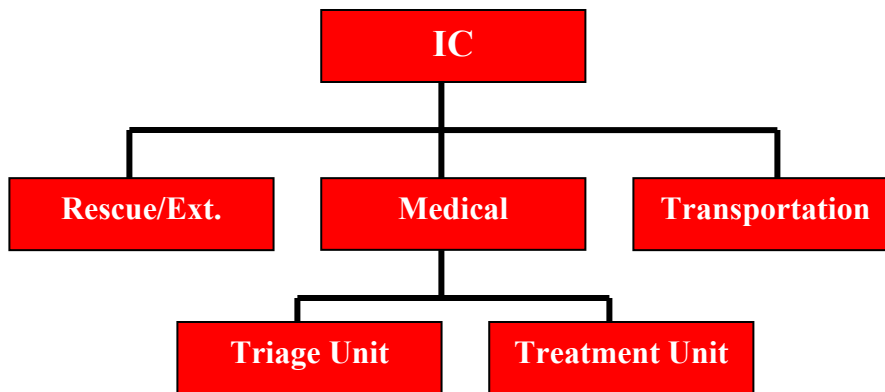
7. Dispatch Options

- First Alarm Medical – 4 Engines, 3 Rescues, 1 Truck, and 2 BC's
- Two and One Medical – 2 Engines, 2 Rescues, 1 Truck, and 2 BC's
- Request individual resources

8. Basic ICS Structure and Assignments

- Command
 - Safety

- Rescue/Extrication Group(s)
- Medical Group
 - Triage
 - Treatment
- Transportation Group
 - LZ



- Describe your Incident Action Plan.
- Describe the assignment of resources.
- Discuss your responsibilities if your crew is assigned Medical Group.
- Does your Incident Action Plan IAP address all of your tactical objectives?
 - **Firefighter Safety**
 - **Life Safety**
 - **Incident Stabilization**
 - **Property Conservation**
 - **Customer Stabilization**
- Review:
 - SOP EM-40 MCI procedures