

# KEMLUX® II KS SERIES

ENCLOSED & GASKETED

Cat. #		Approvals
Job	Type	



### APPLICATIONS

- For use in corrosive, wet and dirty industrial applications such as power generation, waste water and sewage treatment, pulp/paper or steel mills.

### SPECIFICATIONS

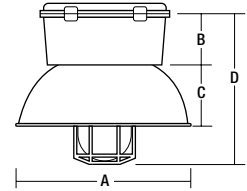
- Cover selection of rigid and flexible pendant, ceiling, wall and 25° stanchion of varying threaded NPT entries.
- Minimum starting temp of -20°F for PSMH and -40°F for HPS.
- Copper-free (<0.4%) aluminum housing, cover and guard with Lektrocote® powder polyester paint finish provides excellent corrosion resistance from most chemicals.
- Optic choices of impact resistance glass globe, symmetric/asymmetric glass refractors, dome/angle fiberglass reinforced polyester reflector, 19" enclosed reflector, and polycarbonate enclosed lowbay.
- Modular design permits selection of cover, body, globe, guard and reflector for custom applications.

### LISTINGS

- UL1598 Wet Locations; NEMA 4X with K-G globe, 55°C ambient listed



### medium housing



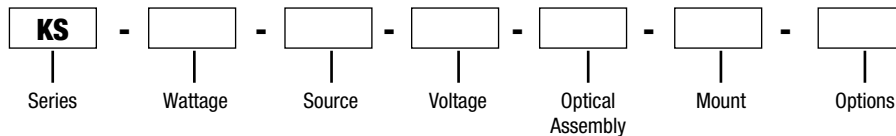
### GLOBE (K-G), GUARD (K-10), DOME (K-06)

A	B	C	D
16 <sup>3</sup> / <sub>8</sub> "	4 <sup>3</sup> / <sub>4</sub> "	5 <sup>5</sup> / <sub>8</sub> "	14 <sup>1</sup> / <sub>2</sub> "
416mm	121mm	143mm	368mm

MORE DIMENSIONS INSIDE

## ORDERING INFORMATION

ORDERING EXAMPLE: KS-15-P-8-G-P2-F4



### SERIES

**KS** Kemplux® II

### WATTAGE

**MEDIUM HOUSING**  
**70** 70 watt HPS, Pulse Start  
**15** 150 watt HPS, Pulse Start  
**LARGE HOUSING**  
**40** 400 watt HPS, Pulse Start

### SOURCE

**S** High Pressure Sodium (HPS)  
**P** Pulse Start

### VOLTAGE

**5** 480V (not available for 50 watt HPS)  
**8** Quad-Tap® (120, 208, 240, 277V)  
**E** 220/240V 50Hz

### OPTICAL ASSEMBLY

**MEDIUM HOUSING**  
**G** Globe  
**MEDIUM OR LARGE HOUSING**  
**L** Symmetrical Glass Refractor  
**LARGE HOUSING**  
**M** Asymmetrical Glass Refractor  
**E** Enclosed Reflector

### MOUNT

**B2** ¾" Balancing Pendant  
**C2** ¾" Ceiling  
**D4** 1¼" Stanchion  
**D5** 1½" Stanchion  
**P2** ¾" Pendant  
**W2** ¾" Wall

### OPTIONS

**F(X)** Fusing<sup>2,3</sup> (X indicates voltage)  
**QS** Quartz Standby (restart time MH=5 min.; HPS=1min.)  
**QT** Time Delay Quartz Standby  
**FA** Factory Assembled - lamp ordered separately globe installed onto housing; includes mounting adapter and/or guard (medium housing only); reflector shipped separately<sup>4</sup>

1 Consult factory for use with 150W MH U.V. Guard Lamp.  
2 To specify voltage, replace X with 1-120V, 2-208V, 3-240V, 4-277V, 5-480V, F-347V.  
3 Not offered with CSA listing.  
4. Lamp ordered separately

## ORDERING INFORMATION

### ACCESSORIES

(order as separate part #)

Catalog Number	Description	Weight	
		lbs.	kg
<b>K-10</b>	Cast Guard for K-G globe	1.0	0.5
<b>K-20</b>	Steel Wire Guard for K-L and K-M glass refractors (zinc plated)	2.0	0.9
<b>K-06</b>	Standard Dome Reflector for K-G globe (FRP)	1.0	0.5
<b>K-07</b>	30° Angle Reflector for K-G globe (FRP)	1.0	0.5

### COMPONENT ORDERING INFORMATION

**KS SERIES MOUNTING ADAPTERS** The following mounting adapters are available for the KS Series. Order separately or refer to Catalog Logic for complete fixture.

Catalog Number	Description	Hubs		Plugs Qty	Weight	
		Size	Qty		lbs.	kg
<b>KS-P2</b>	Pendant	3/4"	1	—	1.5	0.7
<b>KS-C2</b>	Ceiling (also for Electro-Reg®)	3/4"	4	3	2.0	0.9
<b>KS-D4</b>	25° Stanchion	1 1/4"	1	—	4.0	1.8
<b>KS-D5</b>	25° Stanchion	1 1/2"	1	—	4.0	1.8
<b>KS-W2</b>	Wall	3/4"	4	3	4.0	1.8
<b>KS-B2</b>	Balancing Pendant	3/4"	1	—	2.0	0.9

### COMPONENT ORDERING INFORMATION

#### KS SERIES BALLAST HOUSING

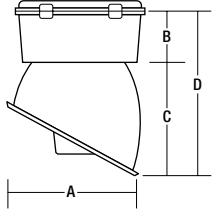
Wattage	Voltage	Catalog Number		
		HPS	Mercury Vapor	Metal Halide
70W	120/208/240/277	<b>KS70S8</b>	—	<b>KS70H8</b>
	480	<b>KS70S5</b>	—	<b>KS70H5</b>
150W	120/208/240/277	<b>KS15S8</b>	—	—
	480	<b>KS15S5</b>	—	—
400W	120/208/240/277	<b>KS40S8</b>	—	<b>KS40P8</b>
	480	<b>KS40S5</b>	—	<b>KS40P5</b>

#### KS SERIES OPTICS

Catalog Number	Description	Weight	
		lbs.	kg
<b>K-G</b>	Prismatic, heat-resistant Glass Globe (medium housing only)	2	0.9
<b>K-E</b>	19" Enclosed Reflector	7	3.2
<b>K-L</b>	Symmetrical (Type V) Glass Refractor	13	5.9
<b>K-M</b>	Asymmetrical (Type II) Glass Refractor	13	5.9

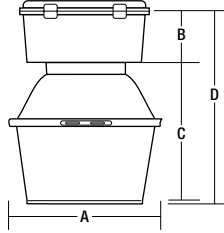
**DIMENSIONS**

**medium housing**



**GLOBE (K-G), ANGLE DOME (K-07)**

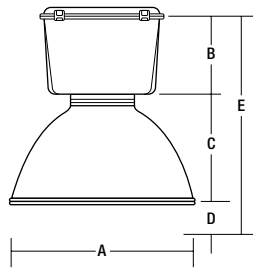
	A	B	C
<b>D</b>	11 <sup>1</sup> / <sub>4</sub> "	4 <sup>3</sup> / <sub>4</sub> "	10 <sup>1</sup> / <sub>4</sub> "
	15"		



**REFLECTOR/GLASS REFRACTOR (K-L)**

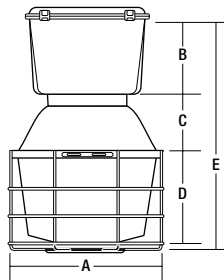
	A	B	C
<b>D</b>	12 <sup>1</sup> / <sub>4</sub> "	4 <sup>3</sup> / <sub>4</sub> "	13 <sup>5</sup> / <sub>16</sub> "
	18 <sup>7</sup> / <sub>16</sub> "		

**large housing**



**REFLECTOR/GLASS LENS (K-E)**

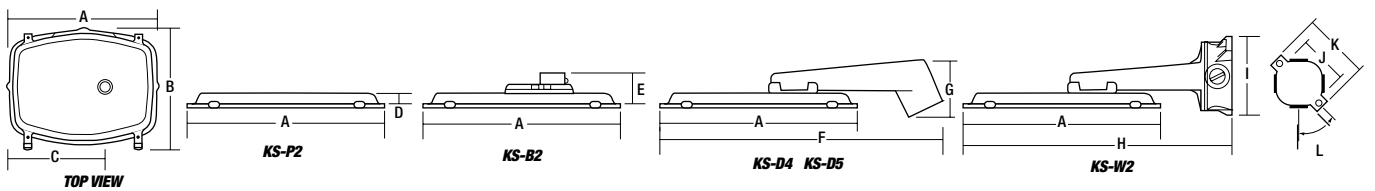
	A	B	C	D	E
	19"	6 <sup>1</sup> / <sub>16</sub> "	12 <sup>5</sup> / <sub>8</sub> "	3 <sup>1</sup> / <sub>2</sub> "	22 <sup>1</sup> / <sub>4</sub> "
	483 mm	154 mm	321 mm	89 mm	565 mm



**REFRACTOR (K-L, K-M), GUARD (K-20)**

	A	B	C	D	E
	13 <sup>1</sup> / <sub>4</sub> "	6 <sup>1</sup> / <sub>16</sub> "	5 <sup>3</sup> / <sub>4</sub> "	7 <sup>9</sup> / <sub>16</sub> "	19 <sup>3</sup> / <sub>4</sub> "
	337 mm	154 mm	146 mm	192 mm	502 mm

**mounting adapters**



	A	B	C	D	E	F	G	H	I	J	K	L
	12 <sup>1</sup> / <sub>4</sub> "	10"	7 <sup>1</sup> / <sub>16</sub> "	7/8"	2 <sup>3</sup> / <sub>16</sub> "	17 <sup>1</sup> / <sub>8</sub> "	3 <sup>1</sup> / <sub>2</sub> "	16 <sup>1</sup> / <sub>2</sub> "	4 <sup>7</sup> / <sub>8</sub> "	5"	5 <sup>5</sup> / <sub>8</sub> "	45°
	311 mm	254 mm	179 mm	22 mm	56 mm	435 mm	89 mm	419 mm	113 mm	127 mm	143 mm	-