



Houston Department of
Health and Human Services

Office of Surveillance & Public Health Preparedness
Bureau of Epidemiology

Influenza Surveillance Weekly Report
CDC Week 45: November 3 - 9, 2013

Influenza Activity by County, State, and National Levels

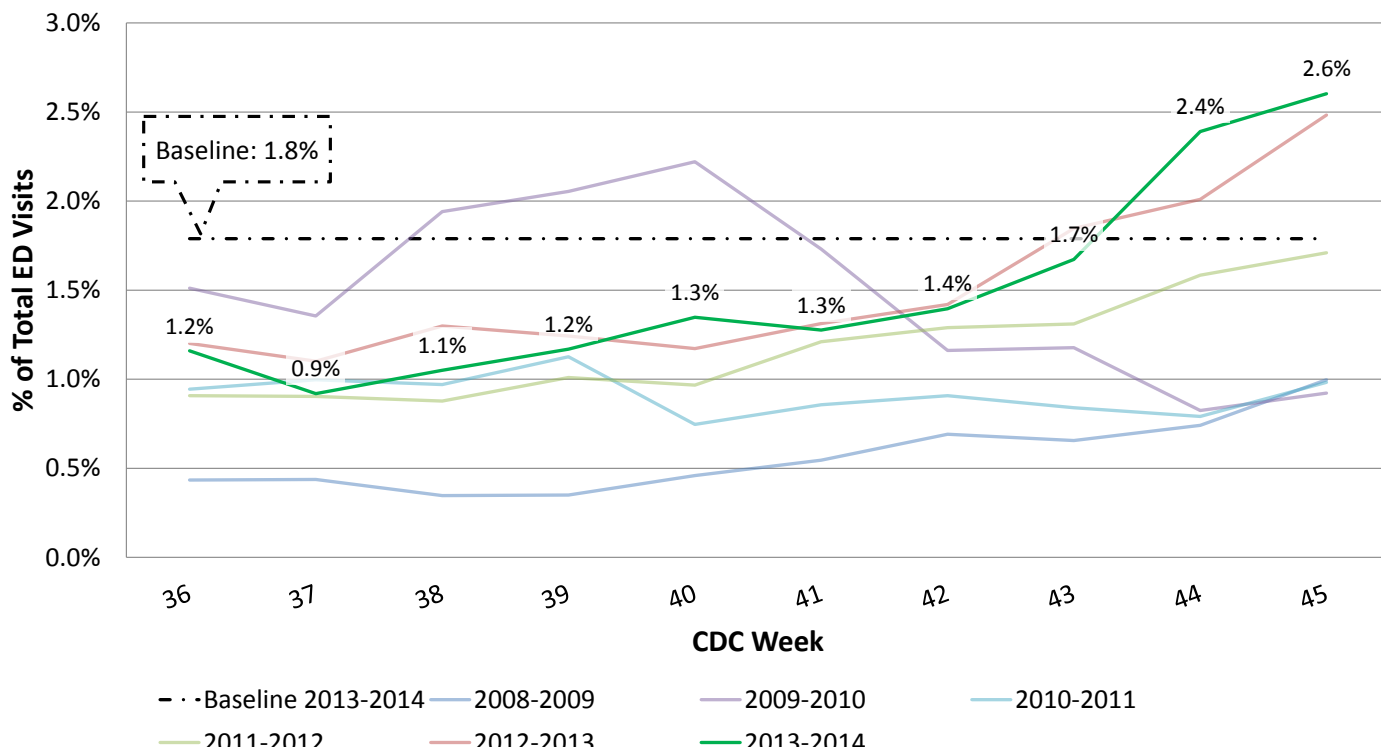
Houston/ Harris County: Week 45	Texas: Week 45	CDC: Week 45
Moderate	Moderate	Low

Highlights

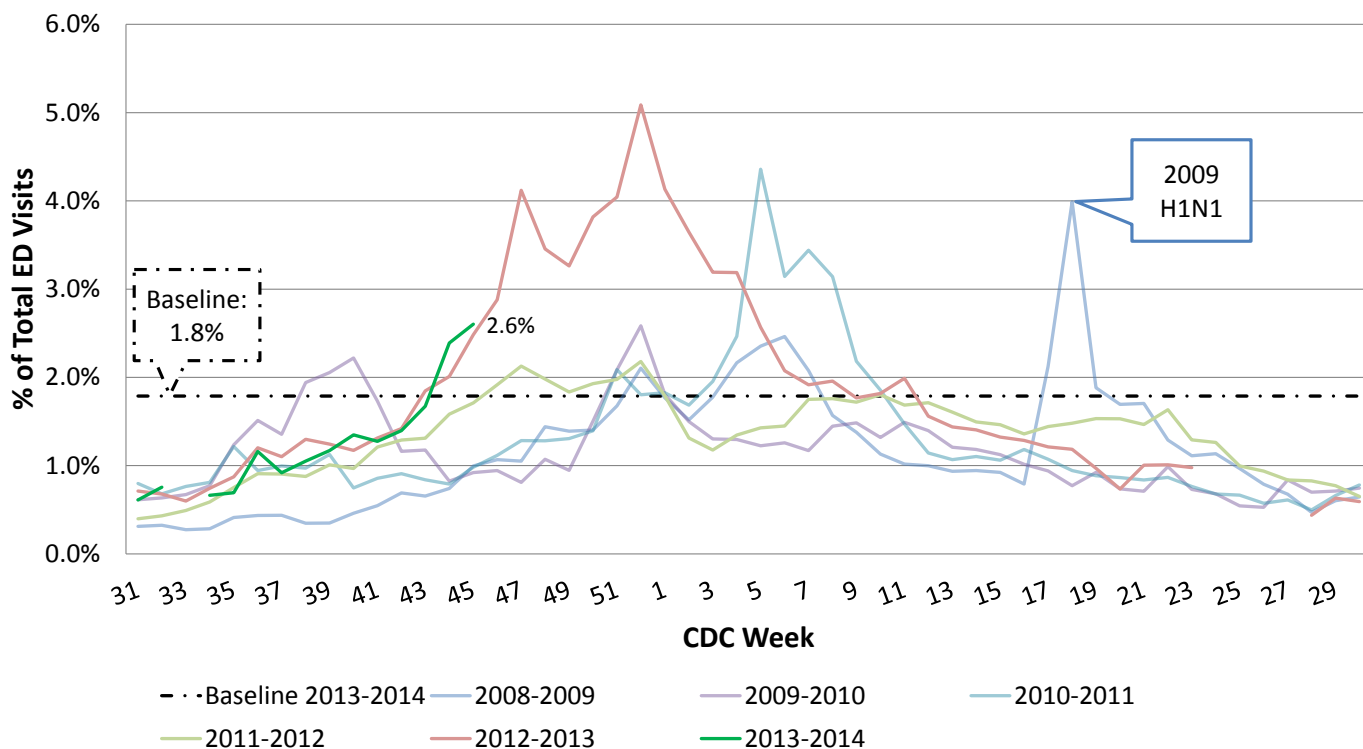
- The percentage of reported influenza-like illness (ILI) in Houston/Harris county **increased** from 2.4% in week 44 to 2.6% in week 45.
- The percentage of flu test positives in Houston **increased** from 14.3% in week 44 to 54.5% in week 45.
- During the 2013-2014 influenza season, zero (0) Houston influenza-associated pediatric deaths have been reported.
- Since last report, 22 surveillance specimens were tested by the City of Houston Bureau of Laboratory Services. The following types and number of viruses were detected in these specimens:
Influenza A H3 (0), Influenza A H1N1 (12), Influenza B (0).
- Cumulatively this season, the City of Houston Bureau of Laboratory Services has tested 101 surveillance specimens.
- The percentage of all cause absenteeism was unavailable for week 45.
- At the national level during week 45, 5.4% of specimens tested and reported to the CDC were positive for influenza. The proportion of outpatient visits for ILI (1.6%) was **below** the national baseline (2.0%) and the proportion of deaths attributed to pneumonia and influenza (6.1%) was **below** the epidemic threshold of 6.4% for week 45.

Syndromic Surveillance: 2013-2014 Influenza Season and Age Distribution

Comparison of ILI-Related ED Visits in Houston/Harris County



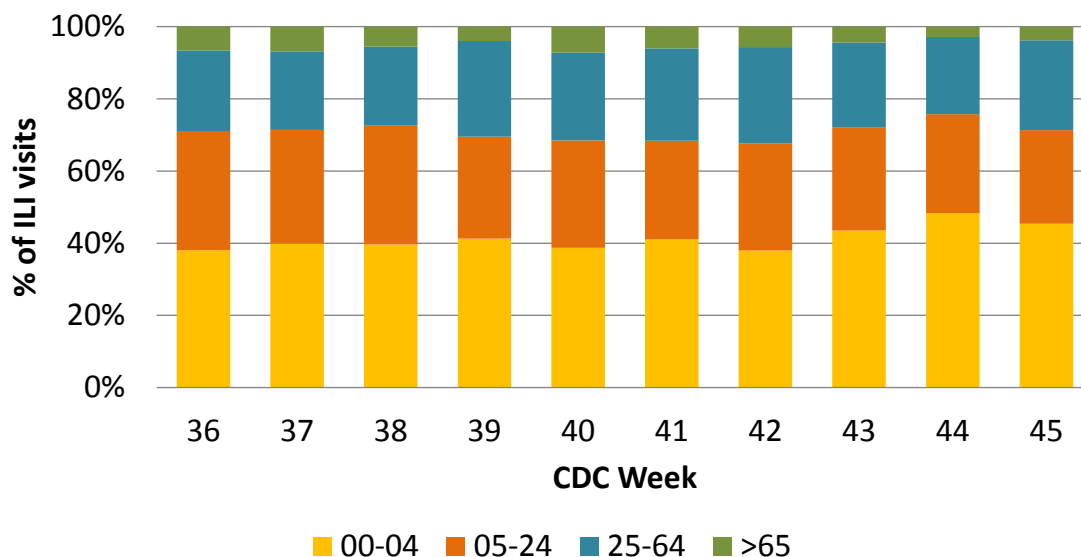
Comparison of ILI-Related ED Visits in Houston/Harris County



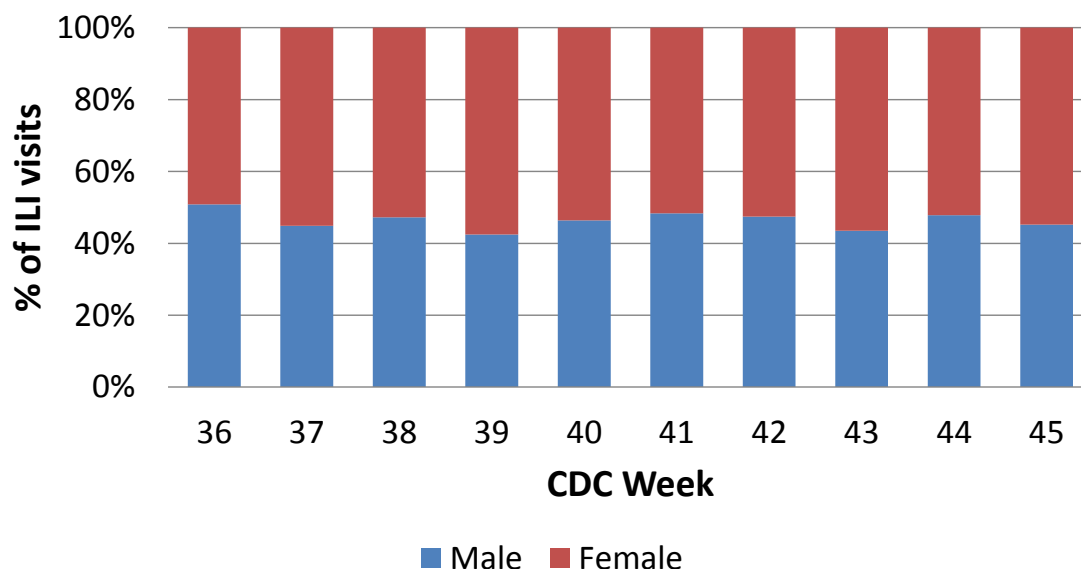
NOTE: Houston/Harris County ILI activity is assessed using information provided by surveillance participants in the Real-time Outbreak Disease Surveillance System (RODS). For week 45, 36 surveillance participants reported ILI information to Houston Department of Health and Human Services. Influenza-like illness (ILI) is defined as the mention of fever AND cough, OR fever AND sore throat, OR flu in the patient's ED chief complaint. These data do not represent laboratory confirmed cases of influenza nor do they represent all ED visits in Houston/Harris County.

Syndromic Surveillance: 2013-2014 Influenza Season and Age Distribution

ILI % by Age Groups, Houston/Harris County, 2013-2014



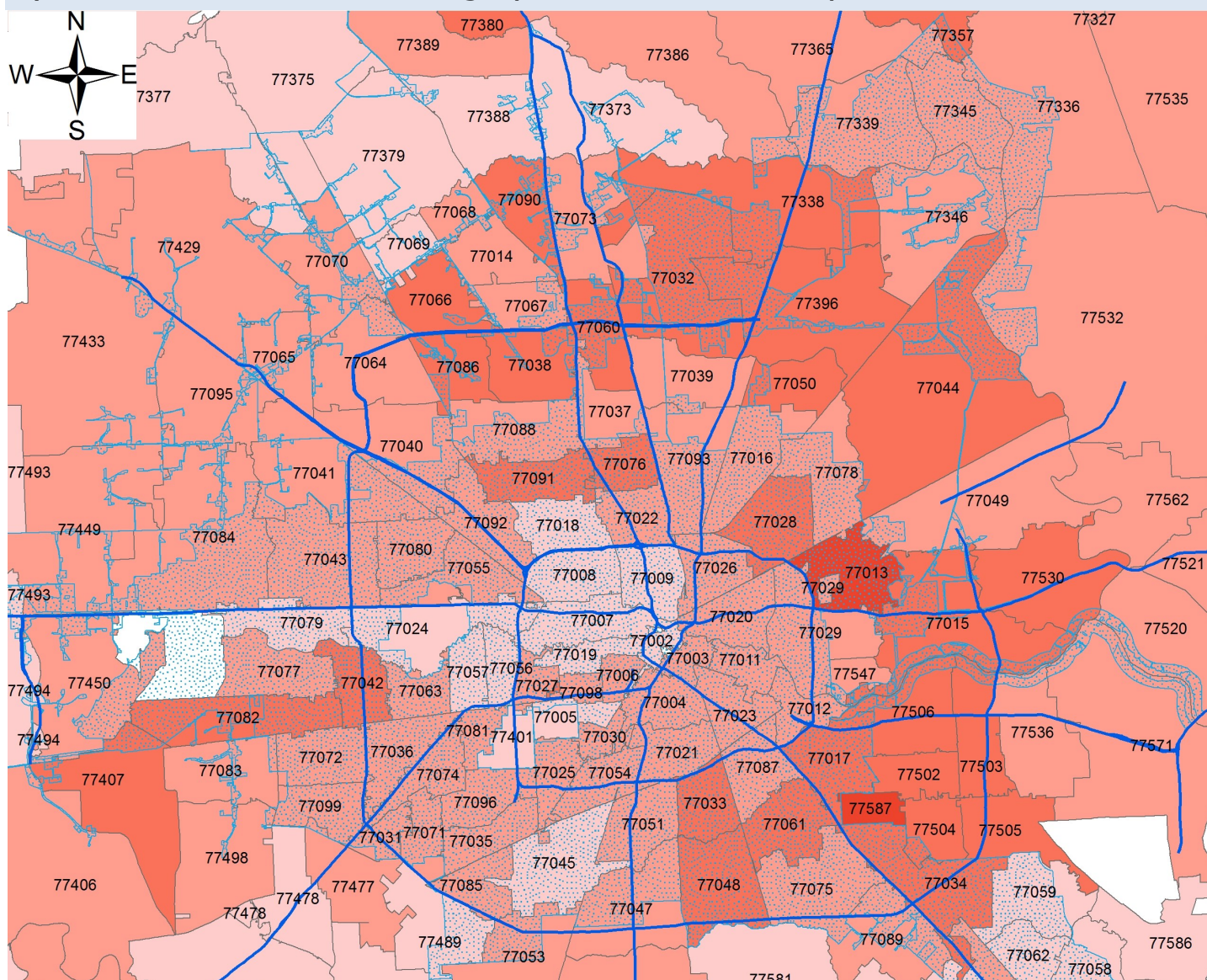
ILI % by Gender, Houston/Harris County, 2013-2014



In week 45, 2.6% of emergency department (ED) visits were due to influenza-like illness (ILI) complaints. Of the 694 patients presenting with ILI, the age group that recorded the most ED visits were the 0-4 year olds (45.4%).

NOTE: Houston/Harris County ILI activity is assessed using information provided by surveillance participants in the Real-time Outbreak Disease Surveillance System (RODS). For week 45, 36 surveillance participants reported ILI information to Houston Department of Health and Human Services. Influenza-like illness (ILI) is defined as the mention of fever AND cough, OR fever AND sore throat, OR flu in the patient's ED chief complaint. These data do not represent laboratory confirmed cases of influenza nor do they represent all ED visits in Houston/Harris County.

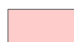
Syndromic Surveillance: Geographic Distribution Map

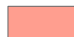



Legend


 City of Houston City Limit


2013-2014 % ILI of ED Visits by Zip Code

 0.1% - 1.1%

 1.2% - 2.5%

 2.6% - 4.0%

 4.1% - 6.0%

 6.1% - 12.5%

As of week 45, the zip codes that have the greatest percentage of ED visits related to ILI (6.1% or greater) are: 77533*.

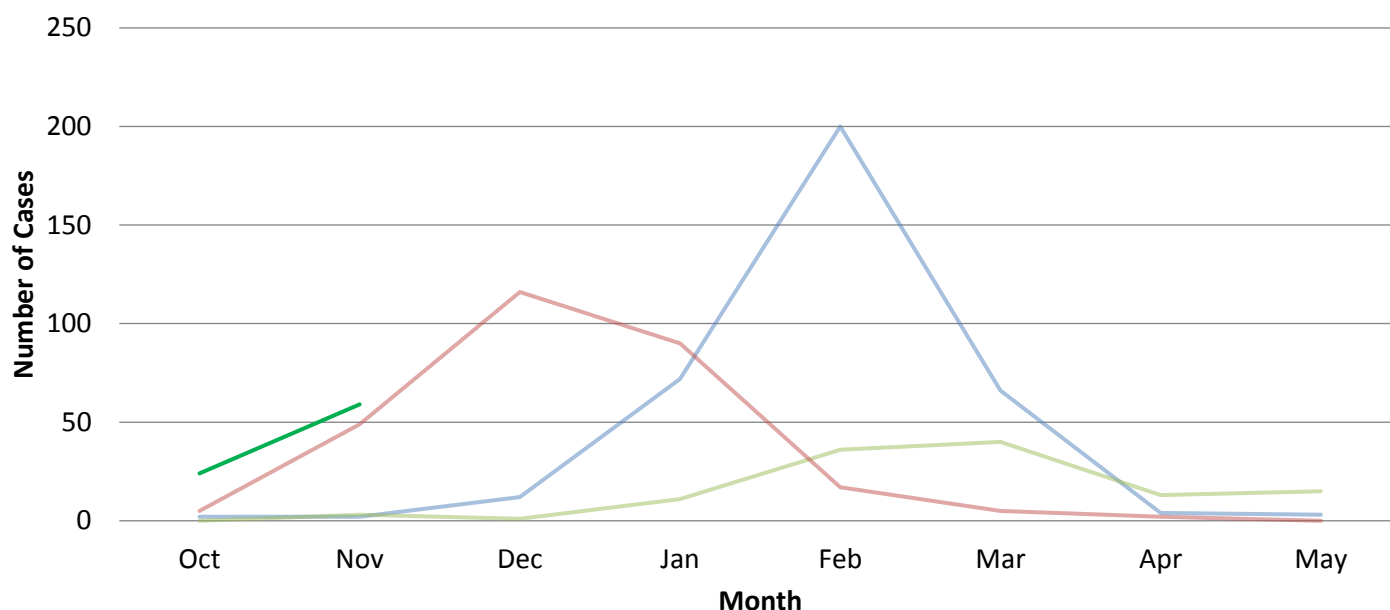
*Zip codes not displayed on map.

NOTE: Houston/Harris County ILI distribution map was created using data provided by 36 hospitals that voluntarily provide data based on chief complaints in the Real-time Outbreak Disease Surveillance System (RODS). This map reflects the percentage of ILI cases from each zip code from the total amount of cases seen in each zip code up to the current week of reporting. Influenza-like illness (ILI) is defined as the mention of fever AND cough, OR fever AND sore throat, OR flu in the patient's ED chief complaint. These data do not represent laboratory confirmed cases of influenza nor do they represent all ED visits in Houston/Harris County.

Passive Surveillance

In week 45, there were (21) additional influenza cases from the prior week. The largest proportion of patients reported with influenza in November 2013 was among those in the age group of 0 to 5 years (14 cases).

Houston Passive Influenza Reported Cases 2010-2014*



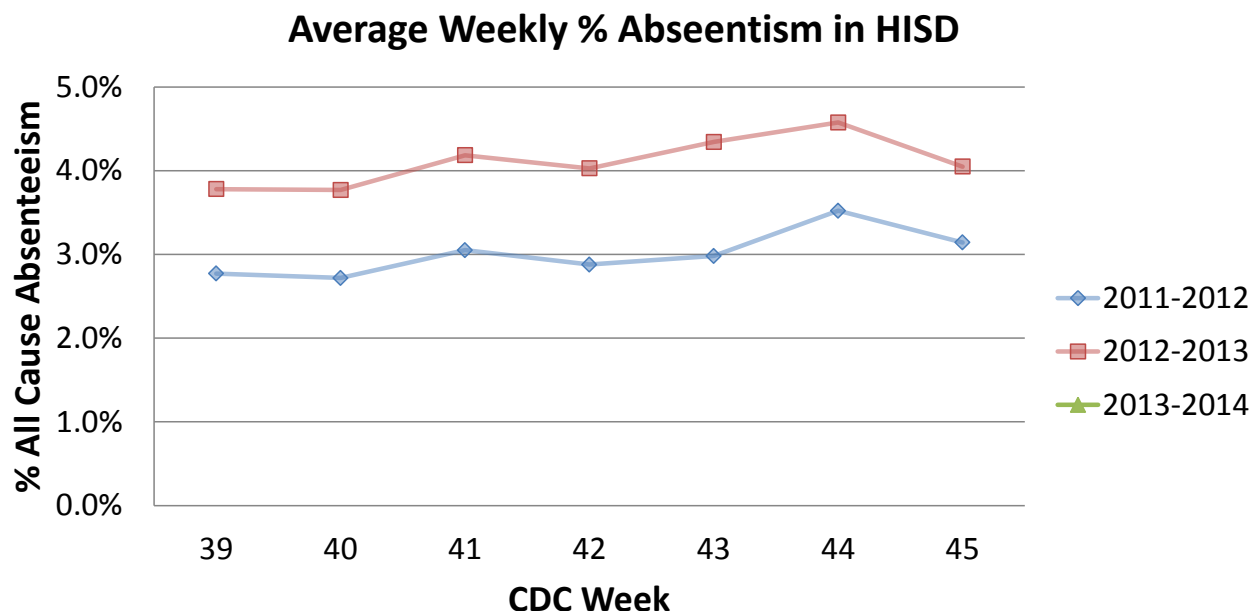
*All data are preliminary and may change as reports are received.

— 2010-2011 — 2011-2012 — 2012-2013 — 2013-2014

Laboratory Surveillance: Influenza Rapid Test Results, Houston

CDC Week Number	43 (Oct 20-26)	44 (Oct 27-Nov 2)	45 (Nov 3-9)
# of Influenza Tests Performed	26	14	22
% Influenza Positive	7.7%	14.3%	54.5%
# Influenza A Positive	2	2	12
% Influenza A Positive	100%	100%	100%
# Influenza B Positive	0	0	0
% Influenza B Positive	0.0%	0.0%	0.0%
# Non-differentiated Positive	0	0	0
% Non-differentiated Positive	0.0%	0.0%	0.0%

School Surveillance



The average daily % absenteeism for HISD schools was unavailable at the time of update.

Table 1: ILI and Influenza Cases by Type and School Type¹ per Month

	Total Cases	Lab Confirmed		Flu A	Flu B	A+B	Unclassified	Elementary Schools	Middle Schools	High Schools	Multi-Level Schools
		#	%								
Aug	1	0	0.0%	0	0	0	0	1	0	0	0
Sep	12	0	0.0%	0	0	0	0	10	1	1	0
Oct	45	4	8.9%	0	0	0	4	29	4	10	2
Nov											
Dec											
Jan											
Feb											
Mar											
Apr											
Total	58	4	6.9%	0	0	0	4	40	5	11	2

ILI cases in HISD students increased in October compared to September. There were only four laboratory confirmed cases seen in October but were not classified by suotyping.

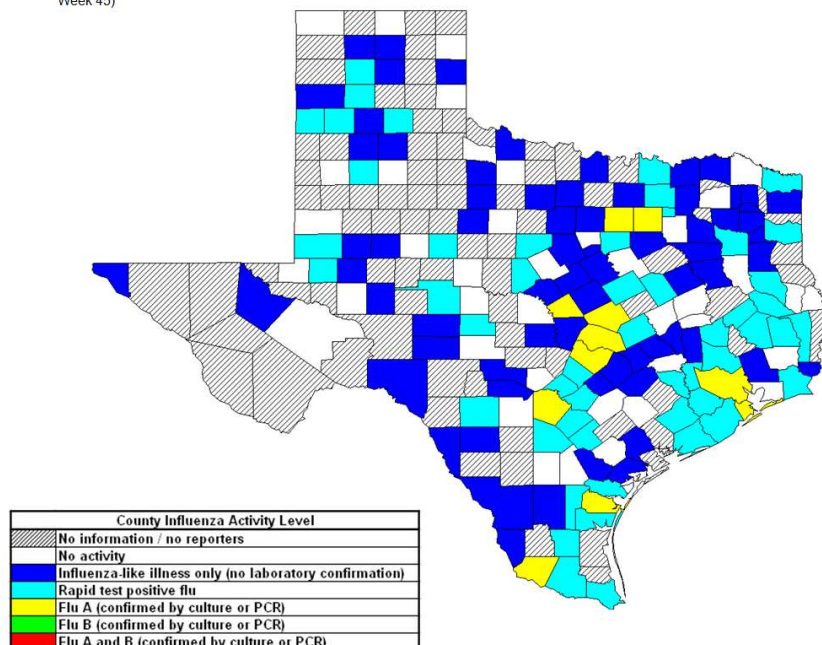
NOTE: Absenteeism and student ILI is collected from 306 schools within Houston Independent School District.

¹School will be counted more than once if more than one case from the same school is reported during the report month.

Texas and National Influenza and ILI Activity

Statewide Influenza Activity Map

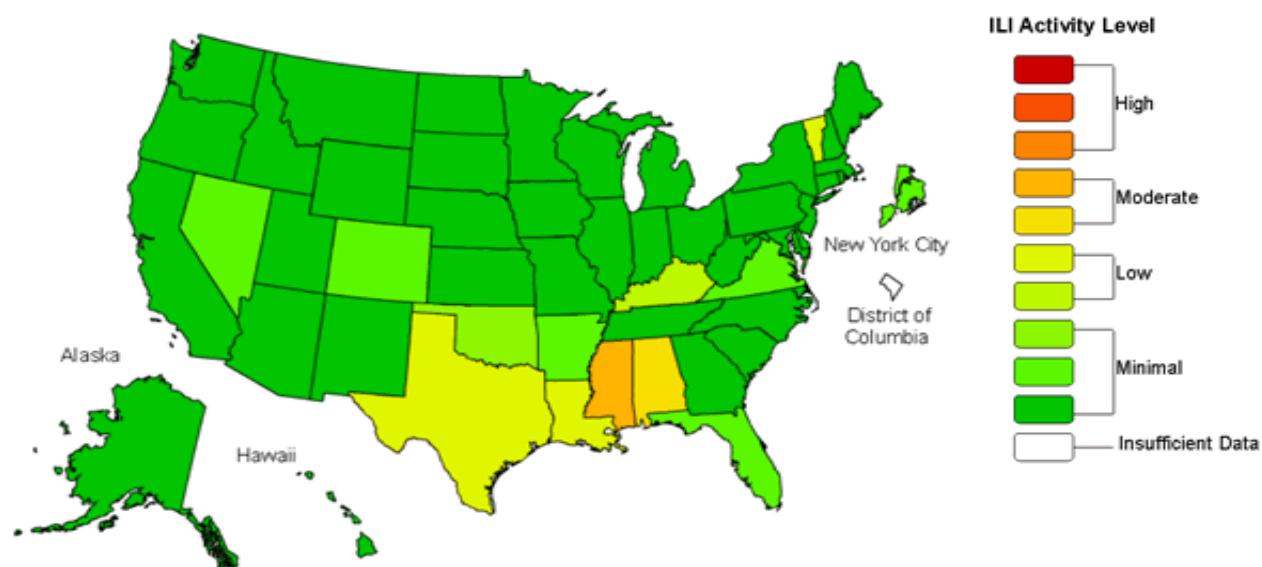
Figure 4: Texas Map Displaying the Highest Level of Influenza or ILI Activity Reported by County for the Week Ending November 9, 2013 (MMWR Week 45)



NOTE: Influenza activity level corresponds to current MMWR week only and does not reflect previous weeks' activity. The majority of influenza cases are not reportable by law to the Texas Department of State Health Services. This map contains data from sentinel sites and does not represent all influenza cases in the state. Positive laboratory results are reported according to specimen collection date or date received in the lab if the former is unknown.

<http://www.dshs.state.tx.us/idcu/disease/influenza/surveillance/2013/>

Influenza-Like Illness (ILI) Activity Level Indicator Determined by Data Reported to ILINet 2013-14 Influenza Season Week 45 ending Nov 09, 2013



NOTE: Data collected in ILINet are used to produce a measure of ILI activity by state. Activity levels are based on the percent of outpatient visits in a state due to ILI and are compared to the average percent of ILI visits that occur during spring and fall weeks with little or no influenza virus circulation. This map uses the proportion of outpatient visits to health care providers for influenza-like illness to measure the ILI activity level within a state. It does not, however, measure the extent of geographic spread of flu within a state. Therefore, outbreaks occurring in a single city could cause the state to display high activity levels. Data collected in ILINet may disproportionately represent certain populations within a state, and therefore, may not accurately depict the full picture of influenza activity for the whole state. <http://www.cdc.gov/flu/weekly/>

The Houston Influenza Surveillance Weekly Report is available on the Houston Department of Health and Human Services web site at:
www.houstontx.gov/health/epidemiology/flu_report.html

NOTE:

Influenza-like Illness (ILI) is defined as fever (temperature $\geq 100^{\circ}\text{F}$) plus a cough OR a sore throat, in the absence of a known cause other than influenza.

Houston ILI baselines were determined using the same method as the Centers for Disease Control and Prevention Regional ILI baselines. The baseline is developed by calculating the mean percentage ILI of ED visits during non-influenza weeks for the previous three seasons and adding two standard deviations. A non-influenza week is defined as periods of two or more consecutive weeks in which each week accounted for less than 2% of the season's total number of specimens that tested positive for influenza.

Additional information regarding Houston, Texas and national ILI activity can be accessed at:

<http://www.houstontx.gov/health/>

<http://www.dshs.state.tx.us/idcu/disease/influenza/surveillance/2014/>

<http://www.cdc.gov/flu/weekly/>

<http://www.who.int/csr/don/en/>

Houston Department of Health and Human Services

Office of Surveillance and Public Health Preparedness

Bureau of Epidemiology

8000 N. Stadium Dr, 4th Floor

Houston, TX 77054

Main Epidemiology Phone Number: (832) 393-5080

Disease Reporting Fax Number: (832) 393-5232

24-Hour Contact Number: (832) 393-5080