

Example Program for AMX - Setup Guide -



February, 2010

Introduction

This guide is a step-by-step setup guide to setting up the Yamaha Commercial Audio demonstration programming for AMX.

The program was written to demonstrate the capabilities of Yamaha remote control enabled devices at exhibitions. We have made the code available to assist programmers with example code. You are free to use this code in your own project.

The programs have multi-lingual capability and can be configured for different number of devices present.

Please read the caution information on the Yamaha website carefully before proceeding to read on.

Skill Pre-requisites

This guide assumes you are an experienced AMX programmer and have knowledge of the Yamaha Commercial Audio products which you wish to control. For some products, knowledge of RS-232, MIDI and basic Ethernet networking will also be necessary. The programming is provided "as is" without technical support from Yamaha as an additional resource.

Hardware Pre-requisites

The programming assumes you have some or all of the following hardware.

AMX

NI-700 processor

NXT-1200VG touch panel

NXA-AVB/ETHERNET break-in-box (only required for video playback)

Yamaha

01V96 (MIDI)

LS9 (MIDI)

M7CL (MIDI)

DME24N/DME64N (RS-232)

DME4io-C (Ethernet)

IMX644 (RS-232)

BD-S2900 Blu-ray player (RS-232)

Other

Unmanaged Ethernet network switch (10/100Mb)

Kenton Electronics THRU-5 MIDI thru device *

Kenton Electronics MERGE-4 5 MIDI merge device *

**only necessary if multiple consoles are required to be controlled simultaneously.*

The programming has been optimised for this hardware. Other AMX processors or touch screens may be substituted, if the programming is modified suitably and re-compiled, but as this operation has not been tested, no guarantee of performance can be given.

Tested Firmware Versions

NI-700 processor : v3.41.414
NXT-1200VG touch panel : v2.60.25

The program has been tested using the above firmware combination. **Different firmware combination could cause unexpected behaviour.** Please refer to the AMX website to check firmware update history.

File list

Please download and unzip all of these files:

YamahaCA_AMX_ExampleV1.0_Programming.zip

NetLinx Studio files for compiling and uploading to the processor. Written for AMX NI-700

YamahaCA_AMX_ExampleV1.0_TP.zip

TPDesign4 files for uploading to the touch panel. Written for NXT-1200VG

YamahaCA_AMX_ExampleV1.0_DynamicContentRev1.2.zip

Language and image files. FTP to the processor and upload.

YamahaCA_AMX_ExampleV1.0_YamahaDevices.zip

Studio manager files for mixers, and configuration files for DME processors and IMX644 installation mixer

YamahaCA_AMX_ExampleV1.0_SetupGuide.pdf

This Setup Guide

Protocol Specification documents

Each Yamaha device protocol specification document is available as below.

DME24N/64N/DME4io-C : Protocol document on [Yamaha web site](#)
01V96, M7CL, LS9 : Protocol document on [Yamaha web site](#)
IMX644 : Described in [owner's manual](#)
BD-S2900 : Please contact your nearest Yamaha branch

Assigned IP address

IP addresses for all the system components.

192.168.0.101	DME24N
192.168.0.102	DME64N
192.168.0.103	DME4io-C
192.168.0.201	AMX NI-700
192.168.0.202	AMX NXT-1200VG touch panel

The device configuration page on the touch panel has pre-configured IP addresses for Yamaha devices. You need to set these identical IP addresses in to the connected Yamaha devices. If you require different IP addresses, these must be modified in the AMX source code before compiling.

Step by step setup

1. Assemble the hardware and connect up both the AMX & Yamaha components together as shown in the system diagram.
2. Verify all devices have power.
3. Verify all devices are upgraded to the latest firmware versions.
4. Verify there is network activity by looking at the link/activity lights on the network switch.
5. For mixers, configure the MIDI settings as shown in the screenshots below.
To save time, we have also prepared Studio Manager files which contain scenes and MIDI configuration settings.
6. For all devices, store scenes or load pre-prepared scenes.
15 are available on the touch panel for the M7CL
15 are available on the touch panel for the 01V96
5 are available on the touch panel for the LS9
8 are available on the touch panel for the DME24N/DME64N/DME4io-C
16 are available on the touch panel for the IMX644, but only 4 memories are necessary as the front panel has 4 memories.

(Note that if you select a scene button on the touch panel and there is no scene on the device nothing will happen, which is not very exciting!)
7. Configure IP addresses of the DME4io-C.
8. For DME models, synchronise the provided DME Designer files using DME Designer.
9. Extract AMX files which are zipped in:
 - YamahaCA_AMX_ExampleV1.0_Programming.zip
 - YamahaCA_AMX_ExampleV1.0_TP.zip
 - YamahaCA_AMX_ExampleV1.0_DynamicContentsRev1.2.zip.
Then, compile and transfer.
10. Configure the setup pages of the AMX system as detailed below.
11. Setup completed.

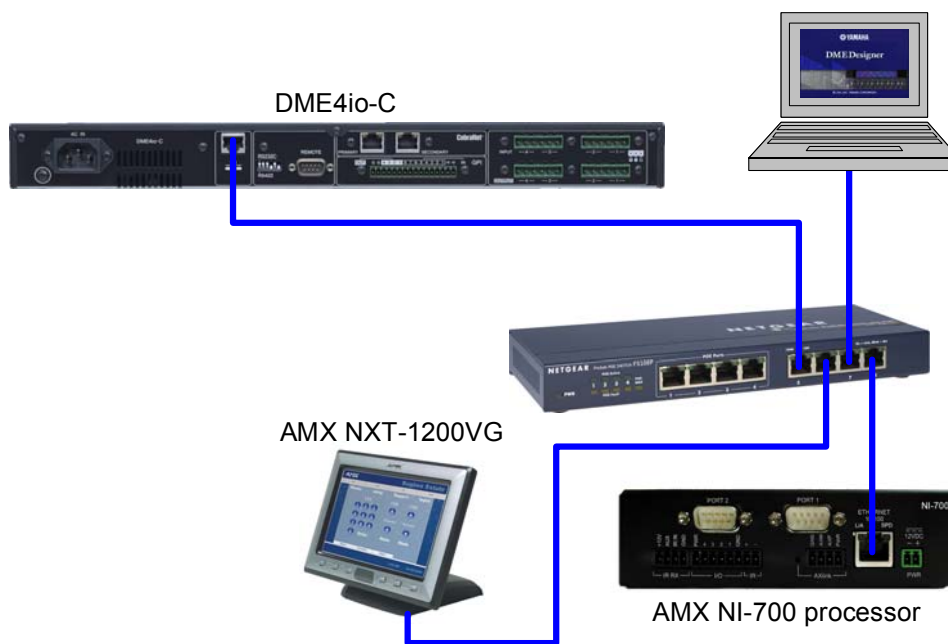
Steps which need further explanation have more information below.

Detail of steps

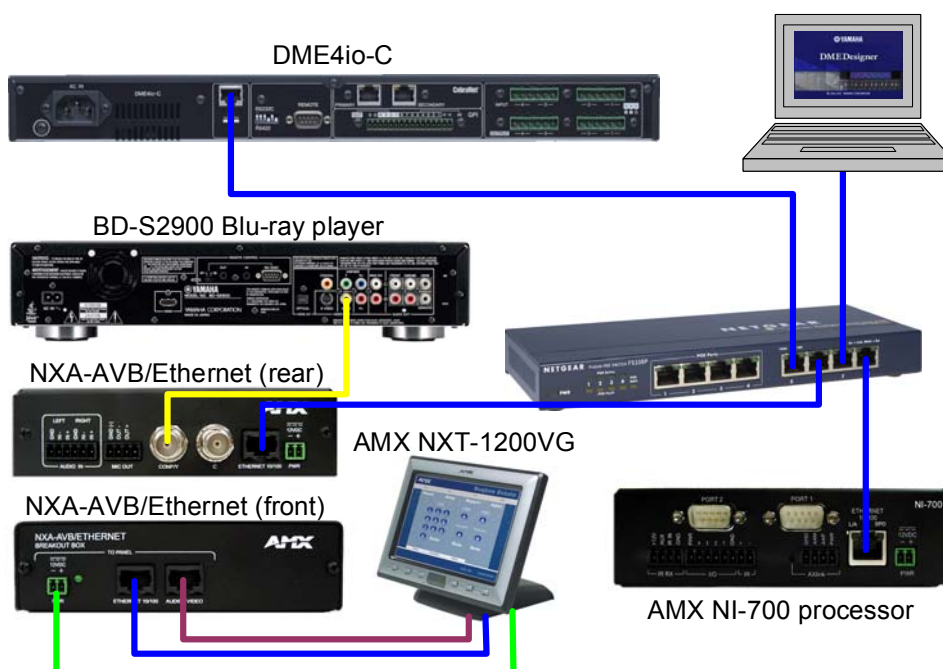
Step 1: System Schematic diagrams

The diagram below shows all possible connections with Yamaha devices which are available in this program. You may connect as few or as many Yamaha devices as required.

Ethernet Connections (without video)

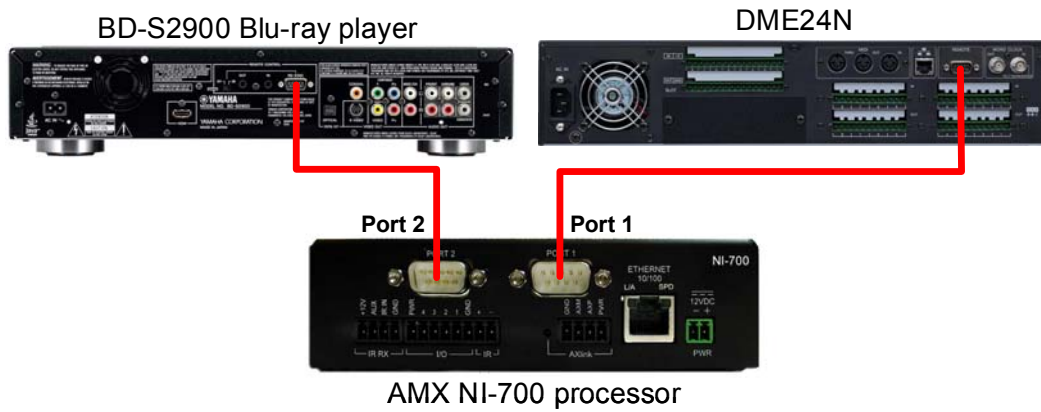


Ethernet Connections (with video)

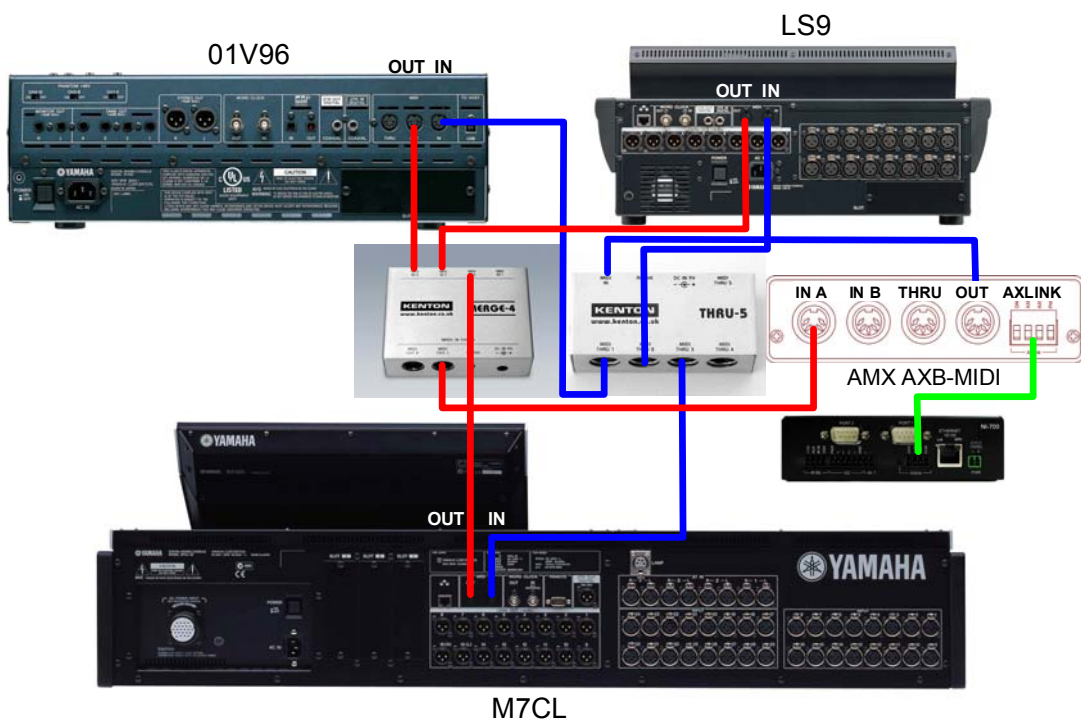


Step 1: System Schematic diagrams (continued)

Serial Connections



MIDI Connections



Step 4: Mixing console MIDI configuration

Parameter change TX and RX should be enabled. All others disabled.

Default MIDI channels are as follows:

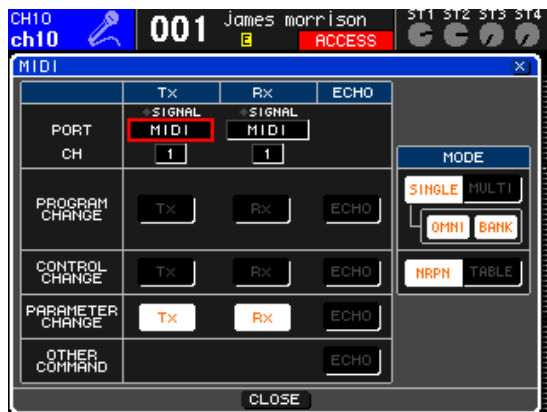
- LS9 – channel 1
- M7CL – channel 2
- 01V96 – channel 3

The device configuration page on the touch panel has pre-configured MIDI channels for Yamaha devices. You need to set these identical MIDI channels in to the connected Yamaha devices. If you require different MIDI channels, these must be modified in the AMX source code before compiling.

Important Note:

Note that at the time of writing, if M7CL is used in addition to another mixer, you **MUST** use the MIDI-THRU and MERGE units. Daisy-chain connection of MIDI will not work with the M7CL.

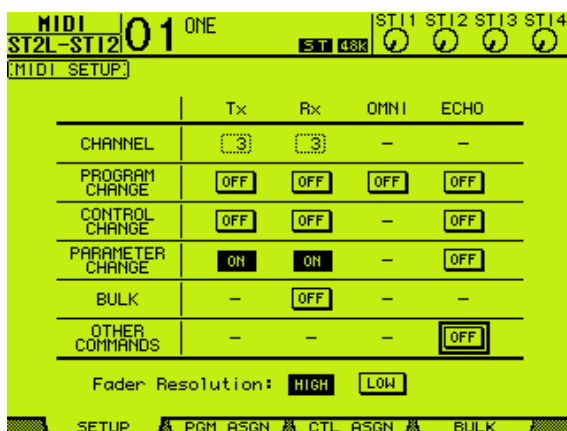
Mixer setup screens:



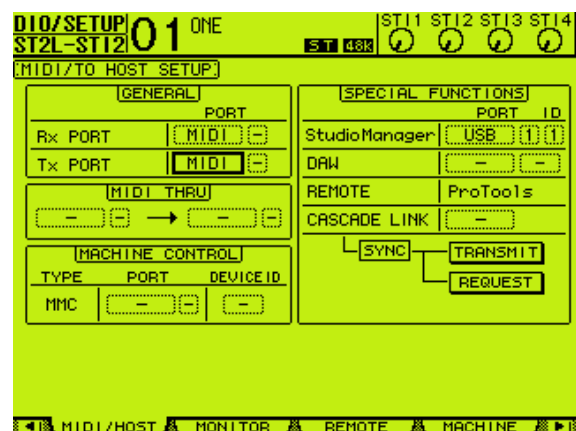
LS9 MIDI settings



M7CL MIDI settings



01V96 MIDI Settings – Setup

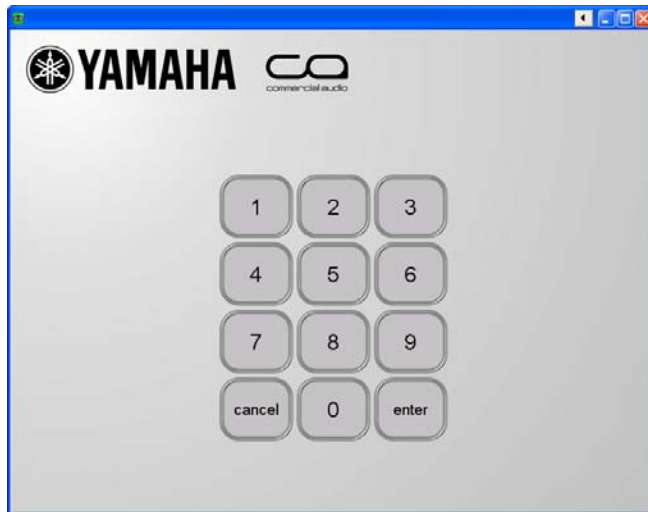


01V96 MIDI Settings – Host

Note that Studio Manager does not change the MIDI channel, so this needs to be configured manually.

Step 8: Touch panel program configuration

1. Press and hold  for 5 seconds.



2. Enter the secret configuration PIN number

4520

If you get the PIN number wrong, you will be returned to the previous screen.

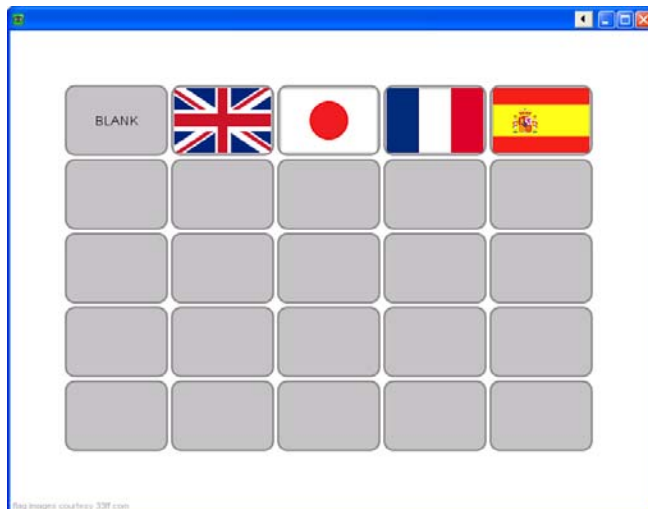
3. **Configure the available languages**

The touch panel is multi-lingual and can support up to 10 languages at the same time. This was designed for Yamaha's exhibition use. You can select your own language if present on the touch panel to make it easier to use, or the default of English. You can have as few as one language only, or as many as 10 available to the user at the touch of a button!

Firstly configure which languages will be present on the touch panel, by pressing the "Languages" button and you will see this screen:



Press one of the 10 languages buttons. Then select a language flag from the available translations (up to 24) to choose the language used by that button:



Select "BLANK" to clear out a language you don't want to be present.

4. Configure the available products

Purpose: Configure the products shown on the touch panel to match the product you wish to use.

Press "Products". There are 10 product buttons, so up to 10 products can be present simultaneously. Press a button and you will see this screen:

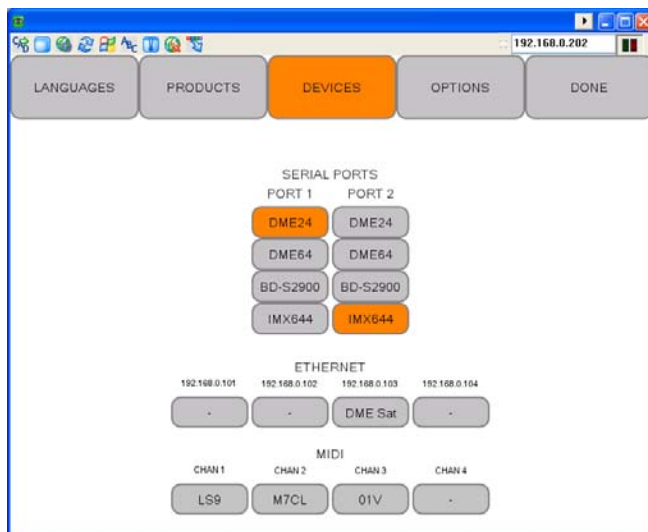


Then select a product from the available products to choose the product used by that button:



5. Verify devices ports, IP addresses and MIDI channels

Press "Devices". Here you can view and change which serial ports are for which products, view what IP addresses should be configured on the connected products and view which MIDI channels are for which products.



N.B. At the time of writing all settings are fixed except for the choice of device for the serial port.

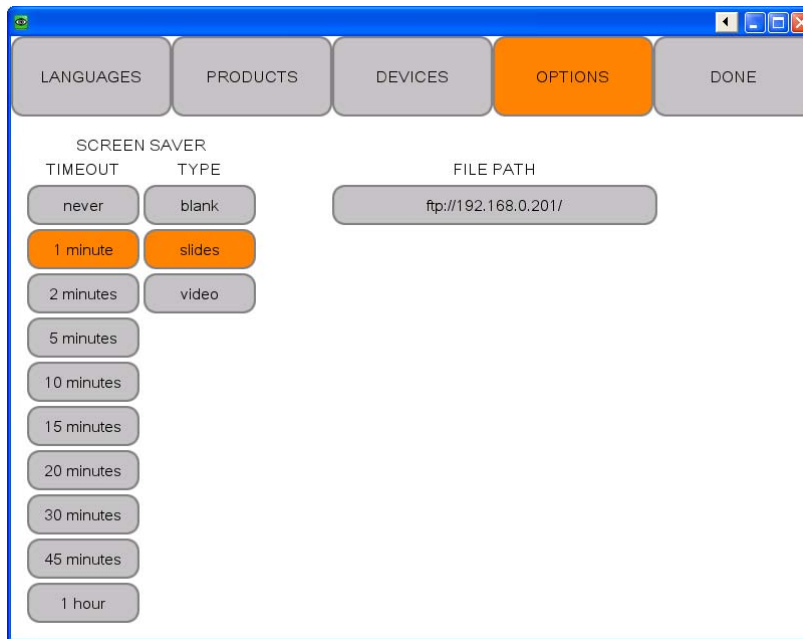
6. Configure Options - Screensaver

Here you can set the screensaver. The purpose of the screensaver is not to save the screen, but to enable moving images to attract the attention of exhibition attendees. The options are

Blank: No screensaver. Touch panel will go to black when not in use.

Slides: A display of product pictures will cycle around with the words “Touch to start” displayed.

Video: This allows the AMX’s video input via the break-in box to be connected to a video source such as a DVD player to show moving images. The video is just for the screensaver and not displayed on any other screens.



7. Configure Options – File Path

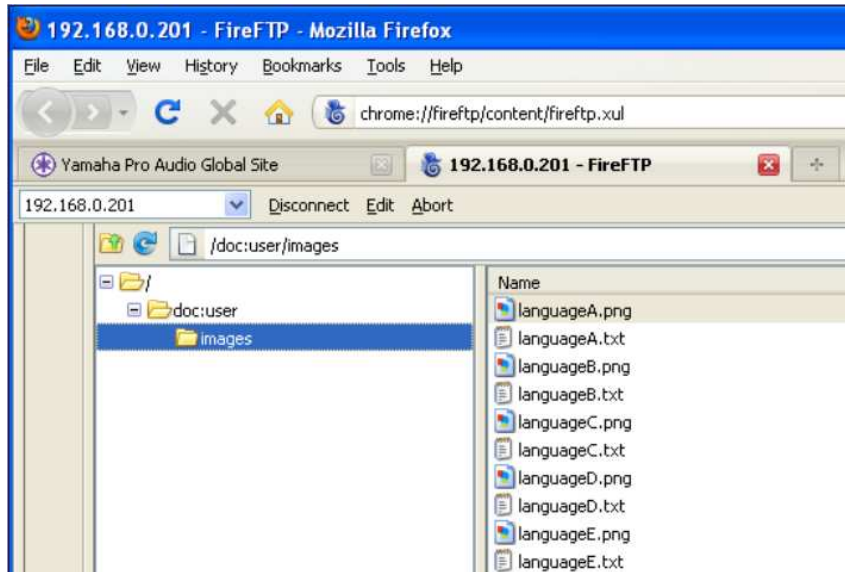
This sets the path where the product images, text and language flags are loaded from. By default this should be left as the AMX processor’s IP address.

8. Press “Done” to finish and return to normal operation

Note that the screensaver will still operate after a period of inactivity whilst in the configuration page. This is a deliberate security feature to ensure that the panel is not left in the configuration page by accident.

Step 9: AMX file extracting, compiling and transferring

Extract AMX files which are zipped in YamahaCA_AMX_ExampleV1.0_Programming.zip, YamahaCA_AMX_ExampleV1.0_TP.zip and YamahaCA_AMX_ExampleV1.0_DynamicContentsRev1.2.zip. The files in YamahaCA_AMX_ExampleV1.0_DynamicContentsRev1.2.zip should be put in a folder called “images” which is located in “/doc:user/images” as shown below by FTP transfer. These files are used for multi-lingual capability. If you don’t carry out this transfer, text won’t be displayed on the touch panel.



You will need the following information for FTP transfer.

Host: 192.168.201 (NI-700 IP address)
Username: NetLinx (default name)
Password: password (default password)

Other files should be compiled and transferred as usual.

Known issues

The following issues are known limitations:


BD-S2900 Blu-ray player

Pressing a transport button (play, stop etc), the touch panel takes 5 seconds to update the display, due to the feedback speed from the BD-S2900.

Troubleshooting tips / FAQ

Tip:



If you momentarily press the  logo, the touch panel will return to the screensaver, without waiting for the time out. This is useful at the end of a demonstration to a customer.

Serial cabling (RS-232)

Q: Does it matter what serial cable I use for what?

A: Yes! The BD-S2900 has quite unusual serial wiring! Please use a dedicated cable for it. The DME24N/64N and IMX644 use more conventional “null modem” wiring. Refer to the product manuals for further information.

Touch panel operation

Q: When I press a scene, why does nothing happen?

A: The connected device has to have a scene stored in it.

Q: The Touch panel shows “connecting...”

A: This is waiting or in the process of connecting to the AMX NI-700 processor. Check Ethernet connections, and network activity lights.

If necessary, re-boot the processor and or touch panel.

Video (optional)

Q: How do I get video working on the touch panel?

A: You must connect from a video source (e.g. DVD/Blu-ray player) with either composite video (1 BNC) or Y/C outputs (2 BNCs). Connect the output from the source to the NXA-AVB/ETHERNET break-in-box. Connect the break in box to the touch panel using the black power cable and CAT5 cables for Ethernet and Video. The touch panel does not accept RGB video.