

# May—July 2013 SPECIALIZED TRAINING EVENTS AND TELENET COURSES



**Kansas Law Enforcement Training Center**

P.O. Box 647  
Hutchinson, KS 67504-0647

Visit our website at [www.kletc.org](http://www.kletc.org)

Phone: 620-694-1400

Fax: 620-694-1420

Email: [coned@kletc.org](mailto:coned@kletc.org)

**KU** KANSAS LAW  
ENFORCEMENT  
TRAINING CENTER  

---

The University of Kansas

## Available Courses

### **Kansas Sheriff's Association Spring Conference: Jail Medical Seminar May 8-9, 2013**

*Presented by: Advanced Correctional Healthcare, Melissa Caldwell, PhD and Karen Stocke, LPN, CCHP*  
Today's healthcare costs, coupled with lawsuit risk, are placing jails and correctional facilities under increasing pressure to find cost controlling methods, while meeting national correctional healthcare standards. Presenters will discuss detox programs in jails, accurate documentation, and difficult inmate behaviors, and will offer solutions to reduce the likelihood of successful lawsuits.



**Project #: LE130370**

**Times: 8:00 AM to 5:00 PM**

**Location: Topeka Ramada Hotel, 420 SE 6th Ave., Topeka, KS**

### **Helicopter Landing Zone Training—May 9, 2013**

*Presented by: Life Team Instructional Staff*  
This 2-hour class will inform students on the following EMS landing zone procedures: How to Activate; Providing Essential Information; Weather; Patient Status and Landing Zone.



**Project #: LE130371**

**Times: 6:00 PM to 8:00 PM**

**Location: KLETC Main Campus, Classroom #1**

**Fees: NONE**

### **Defensive Commentary Driving—May 13, 2013**

*Presented by: KLETC Staff Instructor, Mark Richardson*  
Defensive commentary driving is a course designed to teach drivers new strategies to help minimize risk associated with hazards found during normal driving. In addition the course will help teach drivers safer techniques including recognizing mistakes by other drivers to help avoid traffic crashes. Vehicles will be furnished by KLETC.



**Project #: LE130337**

**Times: 8:00 AM to 5:00 PM**

**Location: KLETC Driver Training Course**

**Fees: \$15/person—Meals and Lodging: \$40/Double Occupancy or \$55/Single Occupancy**

**Note: Training hours are dependent on enrollment; fewer students may result in less training time.**

### **Legal Issues in Car Stops—May 13, 2013**

*Presented by: Colin Wood, SAUSA, US Attorney's Office, District of Kansas*  
This class examines the many legal issues involved in car stops. Through the use of a timeline, the anatomy of a car stop is broken down into pieces to better discuss a law enforcement officer's authority to perform certain tasks at certain times and under certain circumstances.



**Project #: LE130383**

**Times: 8:00 AM to 12:00 PM**

**Location: Maize Police Department, 10100 W. Grady Ave., Maize, KS 67101**

**Fees: None**

## Available Courses

### **FBI Active Shooter Executive Law Enforcement Conference—May 14-15, 2013**

*Presented by: Multiple Instructors*

This two-day executive conference with State, Local and Tribal law enforcement senior management to discuss best practices and expert opinions on the unique and complex aspects of dealing with active shooter/mass shooting situations, as well as support available to assist in incident response, management and resolution.

**Project #: LE130384**

**Times: 8:30 AM to 4:30 PM**

**Location: KLETC Integrity Auditorium**

**Fees: Tuition FREE!! Meals and Lodging—\$60/Double Occupancy OR \$90/Single Occupancy**



### **Partners for Justice 2013: Crime Scene Management—May 15, 2013**

*Presented by: Cory Rodovich, Wichita Police Department and David Klamm, Kansas Bureau of Investigation*

This training session will focus on Crime Scene Management; 360 Degree Technology; Case Study Presentation and Foundations for Case Preparation.

**Project #: LE130375**

**Times: 9:00 AM to 4:00 PM**

**Location: Cowley County College, President's Dining Room, 200 S. 4th St., Arkansas City, KS**

**Fees: NONE—LUNCH WILL BE PROVIDED!!!!**



### **NIK Drug Testing Training—May 16, 2013**

*Presented by: Investigator Tim McClure, Ford County Sheriff's Office* This course will cover the proper way to conduct a preliminary field test of suspected illegal narcotics using the NIK Drug Test kits. This training will also include a basic drug identification portion, handling evidence and testimony in court. We will conduct several actual tests in order for the officers to see the proper way to read the test.

**Project #: LE130378**

**Times: 8:00 AM to 5:00 PM**

**Location: Northwest Kansas Technical College, Student Union, 1209 Harrison, Goodland, KS**

**Fees: NONE**

**NOTE: Participants are required to purchase and bring with them: 1 Complete Marijuana Testing Kit; 1 Complete Cocaine Testing Kit; and 1 Complete Methamphetamine Testing Kit.**

**Possible Vendors: [WWW.COPQUEST.COM](http://WWW.COPQUEST.COM); [WWW.FORENSICSOURCE.COM](http://WWW.FORENSICSOURCE.COM);  
[WWW.TRITECHFORENSICS.COM](http://WWW.TRITECHFORENSICS.COM)**



### **Responding to Alzheimers Disease: Techniques for Law Enforcement and First Responders—May 16, 2013**

*Presented by: BJA and IACP*

This **no-cost** training program is dedicated to providing public safety executives, law enforcement, firefighters, EMS and others from the first responder community with the most current Alzheimer's and dementia training available.

**Project #: LE130381**

**Times: 8:30 AM to 4:30 PM**

**Location: KLETC Integrity Auditorium**

**Fees: Tuition Free!! Meals and Lodging—\$30/Double Occupancy OR \$45/Single Occupancy**

**Special Registration Requirements: Please visit [www.theiacp.org/AlzheimersTraining](http://www.theiacp.org/AlzheimersTraining) to register for this training program.**



## Available Courses

### 19th Annual Midwest Law Enforcement Conference on Gangs and Drugs

#### Sponsored by the Wichita Crime Commission, May 22-23, 2013

Conference topics include: Drug Recognition, Drug Vehicle Interdiction, Issues in Strip Searching Females, Prosecuting Human Trafficking Cases, Human Trafficking Markers, Search and Seizure Update, DV Outreach through Salons of Hope, Hybrid Gangs, Gang Intelligence Briefing

**Times:** 8:00 AM to 5:00 PM May 22-23; 8:00 AM to 12:00 PM May 24th

**Location:** Wichita Airport DoubleTree, 2098 Airport Rd., Wichita, KS

**Fees:** \$150/person

**Questions:** Contact Julie Hower, Wichita Crime Commission, [julie@wichitacrimemission.org](mailto:julie@wichitacrimemission.org) or 316.267.1235.

**Register at:** <http://www.wichitacrimemission.org/>



### Improvised Explosive Device (IED) Awareness/Bomb Threat Management Workshop—May 29, 2013

*Presented by: U.S. Department of Homeland Security Office for Bombing Prevention*

This workshop improves participants' ability to manage IED threats by outlining specific safety precautions associated with explosive incidents and bomb threats. The workshop reinforces an integrated combination of planning, training, exercises, and equipment acquisition in order to maximize available resources.

**Project #: LE130377**

**Times:** 12:30 PM to 4:30 PM

**Location:** KLETC Learning Center, Classroom A

**Fees:** Tuition FREE: Meals and Lodging—\$30/Double Occupancy OR \$45/Single Occupancy



### Duty Knife—May 31, 2013

*Presented by: KLETC Staff Instructor, Bruce Morton*

This course will provide officers with: The safe use of the knife in an everyday event; the constitutional, rational and defensible employment of a duty knife; develop a working knowledge of the guidelines that govern the application of the duty knife as deadly force by an officer; minimize the liabilities associated with law enforcement use of edged weapons; educate officers with the dangers associated with edged weapons.

**Project #: LE130284**

**Times:** 8:00 AM to 5:00 PM

**Location:** KLETC Main Campus, Classroom #3

**Fees:** \$35/Student—Meals and Lodging: \$60/Double Occupancy OR \$75/Single Occupancy; rates include tuition fee.



### Law Enforcement Driver Mentoring Program—June 3, 2013

*Presented by: KLETC Staff Instructor, Mark Richardson*

This program is designed to educate officers in basic driving skills. The course will present options for officers to return and train within their own agency using their own facilities and resources. This course DOES NOT qualify officers as EVO Instructors. This program utilizes low speed exercises developed by IADLEST that will improve driver skills. *Participants are required to bring the vehicle they typically use at their*

**Project #: LE130338**

**Times:** 8:00 AM to 5:00 PM

**Location:** KLETC EVO Course and Classroom 1

**Fees:** \$15/student—Meals and Lodging (includes tuition): \$40/Double Occupancy or \$55/Single Occupancy

**NOTE:** The 8 hour time for the class is dependent on enrollment; fewer students may result in less training time.



## Available Courses

### **Radar/Lidar Instructor Course—June 3-7, 2013**

*Presented by: Vince Awrentz and Bryan Quick*

The course is based on curriculum developed by the National Highway Traffic Safety Administration. This course will improve your proficiency in the use of police traffic radar and lidar and develop your instructional skills sufficiently to present training programs to other members of law enforcement. Students should bring their agency radar and/or lidar units for practical exercises.



**Project #: LE130330**

**Times: 8:00 AM to 5:00 PM**

**Location: KLETC Learning Center, Classroom B**

**Fees: \$225/Commuters—Meals and Lodging: \$350/Double Occupancy OR \$425/Single Occupancy**

### **2013 Partners for Justice: Crime Scene Management—June 4, 2013**

*Presented by: Cory Rodivich, Wichita Police Department and David Klamm, Kansas Bureau of Investigation*

This training session will focus on Crime Scene Management; 360 Degree Technology; Case Study Presentation and Foundations for Case Preparation.



**Project #: LE130376**

**Times: 9:00 AM to 4:00 PM**

**Location: Scranton Attendance Center, 104 Burlingame Ave, Scranton, KS**

**Fees: NONE—LUNCH WILL BE PROVIDED!!!!**

### **TELENET II: Legislative Updates—June 5, 2013**

*Presented by: Ed Klumpp, Law Enforcement Liaison*

This course will discuss updates, laws and prospective projects up for review in the Kansas Legislature relevant to Kansas Law Enforcement. Those laws effective July 1, 2013 will be discussed as well.



**Project #: LE130621 (DAY) OR LE130622(Night)**

**Times: 1:00 to 3:00 PM OR 7:10 to 9:10 PM**

**Location: STATEWIDE**

**Fees: NONE**

### **NW3C Fast Track—June 10-14, 2013 AND July 8-11, 2013**

*Presented by: NW3C Staff Instructors, Cindy Gonnella and Mike Stern*

The NW3C Fast Track program (FT) was developed to assist agencies in establishing or replenishing a cadre of computer forensic examiners in a short period of time. (2 months) The FT consists of three classes, Cyber-Investigation 101 – STOP, Cybercop 101 – BDRA, and Cybercop 201 – IDRA. These classes are delivered at one location in two one week sessions, over a two month period. These courses provide the students with the knowledge and skill sets to collect and preserve the digital media, how to create duplicate images of digital media, and to understand the architecture and functionality of the Windows NT file system (NTFS), the FAT file system, and related processing issues.



**Project #: LE130385 (June 10-14, 2013) and LE140225 (July 8-11, 2013)**

**Times: 8:00 AM to 5:00 PM**

**Location: Ft. Hays State University, 420 Custer Dr., Hays, KS 67601**

**Fees: NONE**

**Special Registration: You are required to register through the NW3C website. Please visit <http://nw3c.org/training/computer-crime/66> for training eligibility.**



## Available Courses

### Death Investigations—June 10-14, 2013

*Presented by: Chuck Fann, Hutchinson Community College*

Topics include causes of death (drowning, fires, gunshots, etc.), and basic body handling. Students will learn how to: conduct an investigation of death resulting from criminal, suspicious, known causes, or undetermined causes. Interview witnesses and prepare full description of scene and pertinent facts relating to the death; examine and secure official possessions. Gather evidence and related materials at the scene; and obtain exemplar material from suspects in criminal cases.

**Project #: LE130382**

**Times: 8:00 AM to 5:00 PM**

**Location: KLETC Learning Center, Classroom C**

**Fees: \$225/Student—Meals and Lodging: \$350/Double Occupancy OR \$425/Single Occupancy; rates include the course tuition fee.**



### Online Data Entry—June 11, 2013

*Presented by: Matt Defner, KS-CPOST*

This course will prepare training officers, department support personnel or other department employees to enter training data online, instead of submitting the information on paper. The participant will interact with the web-based computer program to submit the data to KS-CPOST. A general working knowledge of the internet and computers will be required for this course.

**Project #: LE130348**

**Times: 10:00 AM to 2:30 PM**

**Location: KLETC Brazeal Hall, Computer Lab**

**Fees: NONE**



### Kansas State Child Death Review Board—June 14, 2013

*Presented by: Various Instructors*

The Office of Kansas Attorney General Derek Schmidt, the Kansas State Child Death Review Board, the Regional Community Policing Training Institute at Wichita State University, and the Kansas Law Enforcement Training Center are proud to announce a collaborative effort to sponsor four state-wide training sessions providing six hours of instruction on a variety of topics related to child fatalities.

**Agenda:** Introduction (9:00-9:15am); Suicide Prevention (9:15-9:45am); Recognizing Child Abuse (9:45-10:45am); Break (10:45-11:00am); SIDS/SUID (11:00am-12:30pm) Lunch (12:30-1:30pm); Death Scene/Investigation (1:30-3:00pm); Break (3:00-3:15pm) Autopsies (3:15-4:00pm);



**Project #: LE130368**

**Times: 9:00 AM to 4:00 PM**

**Location: Scott City, KS**

**Fees: None**

**Note: To register, please contact Kristin Brewer, Program Manager, RCPI kristin.brewer@wichita.edu, 316.978.5897. Specific training location to be included in confirmation.**

## Available Courses

### Authorized Central Storage Class (ACS)—June 18-20, 2013

*Presented by: KBI and DEA*

The Kansas Bureau of Investigation is dedicated to providing investigative expertise and support, in the form of responsible, timely and cost effective options for the proper disposal of waste associated with clandestine laboratories. In an effort to support law enforcement across the State of Kansas with this mission, the KBI has partnered up with the United States Drug Enforcement Administration (DEA) in the Authorized Central Storage Program. The KBI and DEA are asking for your involvement in this program by offering 24-hours of training. This required training will consist of function specific training related to US DOT/RCRA regulations, packaging, labeling, transporting and storing of hazardous waste. Attendees who attend the training will receive approximately \$1,000 worth of equipment from DEA consisting of a combination fire resistant/chemical resistant suit, chemical booties, chemical tape and chemical gloves. The KBI needs to have representation from agencies across the State of Kansas to be involved in this program. This is the first two of 4 initial classes being offered across the state. Each class is limited to 50 participants. Depending on registration, the KBI may request agencies with multiple participants to spread out their participation amongst the classes.

**Project #: LE130390**

**Times: 8:00 AM to 5:00 PM**

**Location: Pittsburg State University Technology Center, Room S102, 101 E. Ford St., Pittsburg, KS**

**Fees: Tuition FREE!!**



### Recognizing and Dealing with People with Mental Illness—June 20, 2013

*Presented by: Mental Health America of the Heartland*

This course will assist students to recognize the symptoms of, and more effectively interact with, individuals with mental illness.

**Project #: LE130387**

**Times: 8:00 AM to 5:00 PM**

**Location: Fisher Community Center, 201 E. Iowa St., Hiawatha, KS 66434**

**Fees: NONE**



### Tactical Pistol for Patrol—June 24-28, 2013

*Presented by: KLETC Staff Instructor, Dan Lebr*

This course is intended to bridge the gap between basic marksmanship skills and the tactical shooting skills that an officer must possess in order to survive an armed confrontation. The primary focus of this course will be shooting drills that focus on dynamic use of the sidearm in a fluid environment rather than the static firing line.

**Project #: LE130386**

**Times: 8:00 AM to 5:00 PM**

**Location: KLETC Firearms Range—10205 Halstead St., Hutchinson, KS 67501**

**Fees: \$100/Student—Meals and Lodging: \$220/Double Occupancy or \$295/Single Occupancy; rates include the course tuition fee.**

**Prerequisite: Completion of basic training; ability to fire 84% or above on the KS-CPOST qualification course.**

**Equipment: Duty Leather, 3 magazines and range clothing, ballistic vest, hard athletic cup and 1200 rounds of duty ammunition.**



## Available Courses

### **Traffic Enforcement Strategies—July 9, 2013**

*Presented by: Dave Corp and Robert Eichkorn, KDOT*

This 2-hour block of instruction will focus on two specific traffic enforcement strategies; Occupant Protection and Impaired Driving. Areas of concentration will include: Traffic Safety; National and Local Statistics; Media Campaigns; Available Resources for Kansas Law Enforcement; and Additional Statewide Training Opportunities.

**Project #: LE140207**

**Times: 7:00 PM to 9:00 PM**

**Location: KLETC Main Campus, Classroom #1**

**Fees: Tuition FREE!!**



### **TELENET II: Critical Incident Stress Management—July 10, 2013**

*Presented by: Deputy Narciso Narvias, Sedgwick County Sheriff's Office*

As crises and disasters become epidemic, the need for effective crisis response capabilities becomes obvious. Crisis Incident Stress Management (CISM) represents a powerful approach to crisis response. This 2-hour Telenet presentation will provide a brief overview of CISM, a comprehensive, integrative, multicomponent crisis intervention system and will include information on: Pre-crisis preparation; Responding to disaster or large-scale incidents; Defusing; Critical Incident Stress Debriefing; Peer-to-Peer support; Follow-up and referral resources.

**Project #: LE140601 (DAY) OR LE140602 (Night)**

**Times: 1:00 PM to 3:00 PM OR 7:10 PM to 9:10 PM**

**Location: STATEWIDE**

**Fees: Tuition FREE!!!**



### **Authorized Central Storage Class (ACS)—July 16-18, 2013**

*Presented by: KBI and DEA*

The Kansas Bureau of Investigation is dedicated to providing investigative expertise and support, in the form of responsible, timely and cost effective options for the proper disposal of waste associated with clandestine laboratories. In an effort to support law enforcement across the State of Kansas with this mission, the KBI has partnered up with the United States Drug Enforcement Administration (DEA) in the Authorized Central Storage Program. The KBI and DEA are asking for your involvement in this program by offering 24-hours of training. This required training will consist of function specific training related to US DOT/RCRA regulations, packaging, labeling, transporting and storing of hazardous waste. Attendees who attend the training will receive approximately \$1,000 worth of equipment from DEA consisting of a combination fire resistant/chemical resistant suit, chemical booties, chemical tape and chemical gloves. The KBI needs to have representation from agencies across the State of Kansas to be involved in this program. This is the first two of 4 initial classes being offered across the state. Each class is limited to 50 participants. Depending on registration, the KBI may request agencies with multiple participants to spread out their participation amongst the classes.

**Project #: LE140228**

**Times: 8:00 AM to 5:00 PM**

**Location: KLETC Integrity Auditorium**

**Fees: Tuition FREE!! Meals and Lodging: \$90/Double Occupancy OR \$135 Single Occupancy**



As always, if you have any Specialized Training needs or questions, contact either Mark Damitio, Deputy Assistant Director, KLETC, 620-694-1532 or email [mdamitio@kletc.org](mailto:mdamitio@kletc.org) or Heather Buller, Senior Program Manager, KLETC, 620-694-1537 or email [hbuller@kletc.org](mailto:hbuller@kletc.org).



## Available Courses

### **Asset Forfeiture—July 17, 2013**

*Presented by: Colin Wood, SAUSA, U.S. Attorney's Office, District of Kansas*

This class discusses the seizure and forfeiture to law enforcement agencies property such as currency, cars, houses, and businesses that have been used or gained through violations of state and federal law. The topics of public policy, law enforcement authority and forfeiture investigative techniques are examined. An overview of the Kansas Drug Tax Act is reviewed allowing participants to better understand the differences between the KDTA and forfeiture law.



**Project #: LE140229**

**Times: 10:00 AM to 3:00 PM**

**Location: Lawrence PD Training Division, 4820 Bob Billings Pkwy, Lawrence, KS 66049**

**Fees: Tuition FREE!!!**

### **Non-Emergency Vehicle Operation—July 22, 2013**

*Presented by: KLETC Staff Instructor, Mark Richardson*

NEVO training may be considered for those drivers who have developed less than favorable driving habits or techniques. It will re-introduce them to the basic skills any operator of an emergency vehicle needs but will not involve emergency response or pursuit applications. NEVO training will cover many different driving techniques and applications of understanding how to be safe and in control of their vehicle in normal non-emergency operating conditions.



**Project #: LE140203**

**Times: 8:00 AM to 5:00 PM**

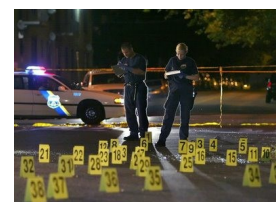
**Location: KLETC EVO Course**

**Fees: \$15/Commuters—Meals and Lodging: \$40/Double Occupancy OR \$55/Single Occupancy; rates include the tuition fee of \$15/person**

### **Partners for Justice 2013: Crime Scene Management—July 24, 2013**

*Presented by: Cory Rodivich, Wichita Police Department and David Klamm, Kansas Bureau of Investigation*

This training session will focus on Crime Scene Management; 360 Degree Technology; Case Study Presentation and Foundations for Case Preparation.



**Project #: LE140216**

**Times: 9:00 AM to 4:00 PM**

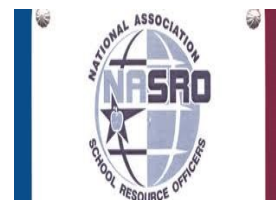
**Location: Ford County Sheriff's Office, 11311 Comanche Rd., Dodge City, KS**

**Fees: NONE—LUNCH WILL BE PROVIDED!!!!**

### **NASRO Basic Training Course—July 29—August 2, 2013**

*Presented by: NASRO*

The Basic School Resource Officer Course is a 40-hour block of instruction designed for any law enforcement officer with two years or less experience working in an educational environment. The course emphasizes three main areas of instruction: functioning as a police officers in the school setting, working as a resource and problem solver and the development of teaching skills. Attendees will be given a working knowledge of the SRO concept and how to establish a lasting partnership with their schools.



**Project #: LE140217**

**Times: 8:00 AM to 5:00 PM**

**Location: KLETC Learning Center, Classroom C**

**Fees: \$495 Paid to NASRO—DO NOT SEND TUITION TO KLETC: Meals and Lodging—\$150/Double Occupancy OR \$225/Single Occupancy; rates DO NOT include tuition fee.**

**Special Registration Process: Please register directly with NASRO—<http://www.nasro.org/content/basic-sro-hutchinson-ks>**



# CONTINUING EDUCATION COURSE APPLICATION

☐ SPECIALIZED TRAINING

☐ TELENET TRAINING

APPLICANT INFORMATION		BOX 1
Applicant Name: (Last) (First) (Middle)		
Title/Rank:	Applicant's Social Security #:	<input type="checkbox"/> Male <input type="checkbox"/> Female
Agency:	Agency E-Mail Address:	
Agency Phone:	Applicant E-Mail Address:	
Agency Fax:	<input type="checkbox"/> Please add this address to the KLETC Continuing Education E-mail listserv for notification of upcoming classes and events	
Agency Mailing Address: (Street or PO Box) (City) (County) (State) (Zip)		

COURSE INFORMATION		BOX 2
Course Title:	Project Number:	Course Dates:
Location of Course:		Course Times:

MEALS AND LODGING	BOX 3
Meals and lodging and any costs incurred during this course will be the sole responsibility of the applicant and/or their agency, unless otherwise noted in the course description. Meals and lodging at KLETC are subject to limited availability, and are not guaranteed until confirmed. Lodging rates at KLETC are based upon double occupancy. Requests for single occupancy will be considered on a space available basis, at an additional cost.	
<input type="checkbox"/> I request meals and lodging	

REASONABLE ACCOMODATION	BOX 4
Pursuant to the Americans with Disabilities Act, KLETC will consider any reasonable need or purpose which the applicant or his/her agency may have regarding the requested course or training. Do You Request a Reasonable Accommodation? <input type="checkbox"/> YES <input type="checkbox"/> NO	
Comments:	

FEES	BOX 5
Commuter: \$ Meals & Lodging: \$	Payment Method: (PLEASE ENCLOSE): <input type="checkbox"/> Check <input type="checkbox"/> Money Order <input type="checkbox"/> Bill My Agency <input type="checkbox"/> Government Purchase Order
<b>**NO FEE CLASSES ONLY**</b> I plan on purchasing meals for cash at the KLETC Cafeteria: <input type="checkbox"/> YES <input type="checkbox"/> NO	

Course fees vary. Please consult the course announcement.

Make checks or Purchase Orders payable to The University of Kansas at the address below.

APPLICANT PRIORITY	BOX 6
If your agency is submitting more than one application for this course, circle the priority of <b>THIS</b> applicant: (highest) <b>1 2 3 4 5</b> (lowest)	

AGENCY EXECUTIVE AUTHORIZATION	BOX 7
(Name) (Title) (Signature) (Date)	

Send completed application form to: KLETC Registrar PO Box 647 Hutchinson, KS 67504-0647 Fax: (620) 694-1420 E-mail: coned@kletc.org  Questions regarding the application process should be directed to (620) 694-1410.	<i>The University of Kansas prohibits discrimination on the basis of race, color, ethnicity, religion, sex, national origin, age, ancestry, disability, status as a veteran, sexual orientation, marital status, parental status, gender identity, gender expression and genetic information in the University's programs and activities. The following person has been designated to handle inquiries regarding the non-discrimination policies: Director of the Office of Institutional Opportunity and Access, IOA@ku.edu, 1246 W. Campus Road, Room 153A, Lawrence, KS, 66045, (785) 864-6414, 711 TTY.</i>	<b>For KLETC Use Only</b> Project #: _____  Date: _____  By: _____
--	---	---