



Wyse Technology Inc

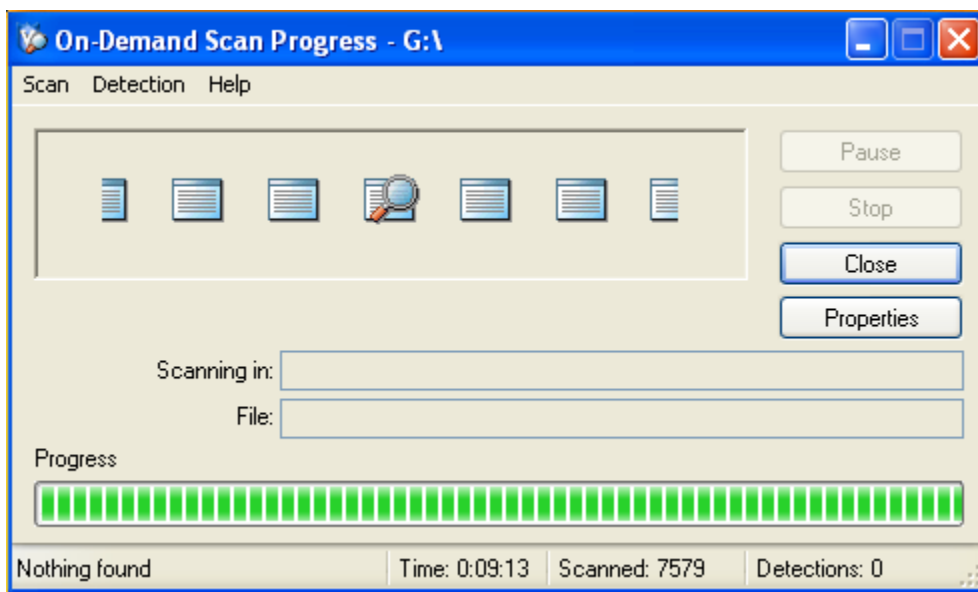
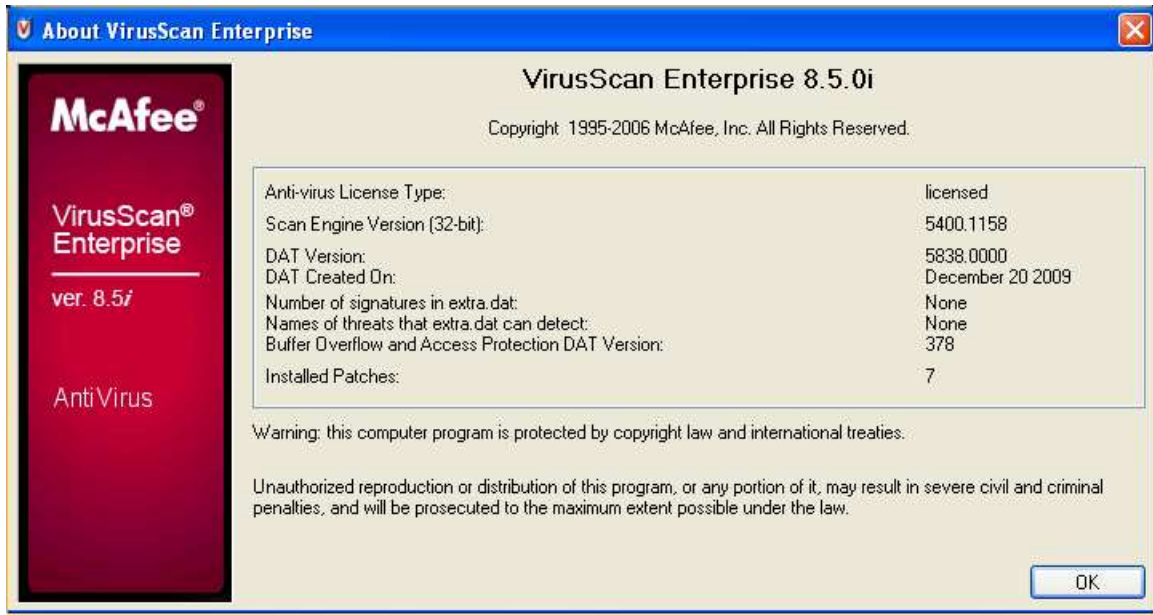
## Release Notes

Date: 12/22/2009

The Release Notes applies to the XPE SP3 WFR3 V6.01 Build 673—for V90L and V90LE Platform. This build will boot up by default in English – but can change to Spanish, German and French.

This build can be pushed to **1 GB, 2GB Flashes**.

**Virus Scan Details:**



**BUILD DETAILS:**

<b>Platform(s)</b>	V90L
<b>Version</b>	6.01
<b>Build number</b>	673
<b>Build File Name</b>	9V92_S673_1024.exe
<b>Size(Bytes)</b>	790528000
<b>MD5</b>	241F9C1C5DFD35164718C8E6B862CBA1
<b>Checksum32</b>	A6895C5D
<b>Localization</b>	US & International English

**BIOS Details**

<b>Version</b>	1.19
<b>Build number</b>	Not Applicable
<b>Build File Name</b>	60480119.BIN
<b>Size(Bytes)</b>	524288
<b>MD5 Check sum</b>	542143D791505EC406F727221C425F10
<b>Checksum32</b>	4E42900

**Boot Sequence (as appearing in the BIOS):**

- 1<sup>st</sup>. boot: LAN
- 2<sup>nd</sup>. boot: Hard Disk
- 3<sup>rd</sup>. boot USB-FDD

**Self Extracting Build Images**

The XPe SP3 WFR3 V6.01 build 673 software is for platform V90L and V90LE, the firmware consists of one build and will be released in “.exe” formats only.

Wyse Images: - 9V92\_S673\_1024.exe  
 XPe V90L/V90LE Build 673 Version 6.01

**WDM Compatibility:**

Build 673 for V90L platform has compatibility with WDM 4.7.2 build 374 with Hot fix HF04072025609.

**WSI (Wyse Simple Imager) Compatibility:**

Build 673 is compatible with WSI 1.7.5 build 83

**Other Major OS components present in the build**

Following are the list of Drivers, Applications, Features and Files present in this build

<b>Drivers/Files</b>	<b>Version ( If applicable)</b>
Display Adapter	6.14.10.424
Ethernet Adapter	3.68.0.453
Audio	6.14.1.4060
Wireless Adapter <ul style="list-style-type: none"> <li>o 802.11n</li> <li>o Any Other</li> </ul>	VIA Networking Technologies USB wireless LAN Adapter 1.67.0.0
Bluetooth Device (Personal Area Network)	5.1.2535.0
Bluetooth Device (RFCOMM Protocol TDI)	5.1.2600.5512
Flash.sys	1.0.2.4
PCMCIA: Ricoh Compatible CardBus Controller	5.1.2600.0
Internal Smart Card reader: USB CCID Smart Card Reader	1.1.0.17
Microsoft ODBC	Supported but Version not available

<b>Applications/Features/Files</b>	<b>Version ( If applicable)</b>
RDP	6.0.6001.18000
Citrix Client	11.0.0.5357
Windows Media Player	11.0.5721.5145
Internet Explorer	7.00.6000.21115
Ericom Power Term WBT	9.1.0.320
VMware View Client	3.1.0.1097
Serden's Interact ES Agent	2.5.000
Neutron	1.0.6.0
Tight VNC	1.3.9.0
Adobe Flash player	10.0.32.18
.NET Framework	3.0 SP1
Silver Light	2.0.40115.0
WSUS	Supported
Microsoft Management Console	3.0
FTP Upgrade application (.msi support only)	1.0.0.18
User Mode Driver Framework (UMDF) to support uPnP and power management	Supported
Background Intelligent Transfer Service (BITS)	2.5
MSXML	6.0
XML Paper Specification (XPS)	Supported
Network Access Protection	Supported
Hot Desktop Prerequisites	Supported
Credential Roaming	Supported
WPA2	Supported
CredSSP	Supported
Wyse Wallpaper on All Users	Supported

<b>Applications/Features/Files</b>	<b>Version ( If applicable)</b>
Peer Name Resolution Protocol (PNRP)	Supported
Direct X 9.0C	Supported
Regpersistence.exe	1.0.1.1
HAgent.exe (support for FBWF and EWF)	5.1.1.23
HagentProp.CPL	1.0.0.10
Client Information	2.0.1.2
File Based Write Filter (FBWF)	Supported
Wyse FBWF Service	1.0.0.9
Wyse FBWF System Tray UI	1.0.1.1
RAMDisk.cpl	2.0.0.5
SMS 2003 prerequisite	Supported

**Total QFE's Present in this build (Updated till October, 2009):**

909520, 923561, 938127-v2-IE7, 938464, 938464-V2, 941569, 950974, 951066, 951376-V2, 951748, 952004, 952069\_WM9, 952954, 953155, 953838-IE7, 953839, 954154\_WM11, 954211, 954459, 954600, 955069, 955839, 956390-IE7, 956391, 956572, 956744, 956802, 956803, 956841, 956844, 957095, 957097, 957579, 958215-IE7, 958644, 958687, 958690, 958869, 959252-V2, 959426, 960225, 960715, 960803, 960859, 961260-IE7, 961371-V2, 961373, 961501, 963027-IE7, 968537, 968816\_WM9, 969059, 969897-IE7, 969898, 970238, 970653-V3, 971486, 971557, 971633, 971657, 971961, 972260-IE7, 973346, 973507, 973525, 973540\_WM9, 973815, 973869, 974112, 974455-IE7, 974571, 975025, 975467

**Changes done on 9V92\_S673\_1024 XPe WFR3 Build**

1. Updated security updates till October 2009
2. File Based Write Filter exclusions removed. (Refer White Paper for Details)
3. Windows Firewall enabled by default.
4. Enabled "Password must meet complexity requirements" group policy.
5. Change Password utility added which will pop up on every "User" and "Administrator" login until its password changed. The pop up won't come for any newly created user.
6. Upgraded WDM HAgent & FBWF Tray versions
7. Upgraded Adobe Flash Player to version 10.0.32.18
8. Display Driver is upgraded to 6.14.10.0424

**The following resolutions are available in this build:**

640x480	1360x1024*
720x480*	1366x768*
720x576*	1400x1050
800x600	1440x900*
1024x768	1440x960*
1152x768*	1600x1024*
1152x864	1600x1200
1280x720*	1680x1050
1280x768	1920x1080*
1280x800	1920x1200
1280x854*	1920x1400*
1280x960	1920x1440*
1280x1024	2048x1152*
1360x768	2048x1536*

\* Natively supported resolution monitor is not available

**Known issues summary:**

**Existing Issues:**

1. Profile corruption with VNC. (Existing Bug)
2. ICA Bitmap cache path is C:\Doc~settings. Usual location is Z:\
3. From WDM server if pulled image is pushed to another unit, after restarting the client you will get "System Settings change" message. Even after clicking on Yes button & restart, same message re-appears. To get rid of this message, disable write filter, then click on Yes on the above message & enable the write filter.

**Intermittent Issues**

1. During booting at Windows XP logo screen client takes longer time to proceed.
2. Write filter will be in disabled condition after discovery from the WDM server. Same problem appears if you delete the client & rediscover it. You have to manually enable the write filter.
3. When pull task is given from the WDM server, there is a delay in getting the "update now" message at the client side.
4. During FBWF Enable/Disable operation "conime.exe error" appears