



# Airports Development

Executive Management

Program Status Report

February 28, 2011

---

## TABLE OF CONTENTS

Project Status	_____	3
Work in Progress	_____	32
Schedule	_____	34
Financial	_____	43
OCIP	_____	70
MWBE/DBE	_____	73

## ELEMENT OVERVIEW

### **Purpose**

This report is a tool to provide status of the Capital Projects for the Airports Development Group. The report presents status per project followed by the Master Program Schedule, a Financial section with Budget, Cash Flow and Change Orders, OCIP, MWBE/DBE, and a section listing Projects in Definition.

### **Airside Element**

The Airside Element consists of multiple projects necessary for accommodating the movement of large aircraft between the north and south runways; reconfiguring traffic movement to accommodate the Tom Bradley International Terminal (TBIT) expansion and modernization program; and provide airfield improvements as required by Airfield Operations, the Federal Aviation Administration and other Federal and State regulatory agencies.

### **Bradley West Element**

The Bradley West Element provides for certain improvements identified in the approved LAX Master Plan, specifically related to development of new aircraft gates at the Tom Bradley International Terminal. The new gates will support the airport's ability to effectively and efficiently accommodate new large aircraft, such as the Airbus A380, Boeing 747 and Boeing 747-8. In addition, the project calls for substantial improvements related to the concourses and central core area of the Tom Bradley International Terminal, including:

- construction of new north and south concourses at the terminal, west of the existing concourses, which would be removed;
- construction of eight aircraft gates and associated loading bridges and apron areas, along the west side of the new terminal concourses;
- relocation and consolidation of existing aircraft gates along the east side of the Tom Bradley Terminal;
- renovation and enlargement of the existing U.S. Customs and Border Protection areas within the central core of the terminal; and
- construction of the secure passenger corridors between Terminals 3 and 4, and the Bradley Terminal.

---

## ELEMENT OVERVIEW - Continued

### **Central Utility Plant (CUP) Replacement Element**

The CUP Replacement Element includes replacing the existing CUP, constructed in 1961, and the co-generation facility, brought into service in 1985, which are considered obsolete and inefficient relative to present-day technology, the distribution network between the CUP and the terminals, and various mechanical/electrical infrastructure improvements within the terminals.

### **Utilities and Infrastructure Element**

These capital improvement projects are critical utility and infrastructure elements that support Terminal and Airport operations within the Central Terminal Area (CTA). Current construction projects include the In-Line Baggage Screening System program consisting of the construction of fully integrated Transportation Security Administration (TSA) screening equipment in Terminal 3 and removal of lobby machines, plus, the IT Fiber Loop Backbone project which will provide new connectivity between all Terminals and the Telecommunication Building.

### **Landside Element**

The Landside Element undertakes capital projects designed to provide for the efficient and effective movement of people through the airport; and to provide convenient parking for individuals using the airport. Landside projects are typically related to parking lots, public transportation, train stations, tank farms, warehouse and cargo areas and access roads and perimeter fencing.

### **Residential / Soundproofing Element**

LAWA has implemented a voluntary Airport Residential Soundproofing Program (RSP) for aircraft noise impacted areas in the City of Los Angeles. This program is for impacted homes adjacent to the Los Angeles International Airport (LAX) and Van Nuys (VNY).

---

## ELEMENT OVERVIEW - Continued

### **Terminals Element**

Most of LAX's Terminals have been serving their purpose without major renovations or modernization efforts over the years. As needs change, the Terminal spaces and structures need repairs, upgrades, modernization, and standardization to satisfy these changing demands. From modernizing elevators and escalators with standardized devices to updating fire/life safety systems, the Terminals Element is focused on implementing these necessary improvements.

### **TBIT Renovation Element**

The Tom Bradley International Terminal (TBIT) was designed in 1982 and constructed for the opening of the 1984 Olympics that were held in Los Angeles. In the intervening years, other than minor improvements and concessions additions, the terminal had not been remodeled or modernized and did not provide comparable standards, amenities, and aesthetics realized at other international and national airports around the world. The aesthetics and finishes at TBIT were based on 1980s design. The lighting in most areas was not up to current standards, the paging system was inadequate, and some areas did not meet current building code requirements including the Americans with Disabilities Act (ADA). Contact gates at TBIT were inadequate to accommodate the "New Large Aircrafts", e.g. Airbus A380. Lastly, due to the events following September 11, 2001, the Transportation Security Administration (TSA) mandated requirements for in-line 100% checked baggage screening of the outbound baggage system at TBIT. The proposed project addresses these deficiencies and new security baggage screening requirements through a comprehensive modernization and upgrade of TBIT.

### **Work in Progress**

This section lists the projects that are in various stages of pre-development. Typically, these projects represent efforts for which LAWA has committed funding for the design; not the construction. A project in this category will experience variability as the design is refined. If approved, projects in Work in Progress will be moved into the appropriate execution element. If not approved, projects will be dropped from this report.

---

## AIRSIDE ELEMENT - Construction Support Facilities (M209A)

### **Project Description**

The project includes the construction of a new aircraft parking ramp/block, new emergency exits for American Airlines Maintenance Hangar, airfield security fencing, building modifications, and other miscellaneous construction activities as may be required.

### **Planning and Programming Status**

Project Definition is complete.

### **Design Progress**

Design is 100% complete.

### **Construction Progress**

First construction contract awarded to Griffith Construction on April 21, 2009.

Notice to Proceed issued June 29, 2009.

Construction is 96% complete.

### **Budget Status**

This project is anticipated to complete on budget.

### **Schedule Status**

The project's original completion date of May 25, 2010 has been further extended to May 2012 to accommodate ASDE-X and replacement FAA fiber work.

### **Issues**

## AIRSIDE ELEMENT - Crossfield Taxiway Project (M101A)

### **Project Description**

The project entails the construction of a 3,437-foot-long by 100-foot-wide taxiway that connects Taxiway 'B' on the south and Taxiway 'E' on the north. To facilitate this construction, there will be removal of existing deteriorated concrete pavement and the removal of asphalt pavement replaced with Portland Cement Concrete (PCC) and asphalt concrete pavement. This project also constructs a new parallel service road and a replacement apron for Remain Overnight (RON) and the following facilities:

- \* Realignment of World Way West and two bridges over the road; one for aircraft crossing as a part of taxiway C13 and the other for vehicular traffic;
- \* Taxiway centerline electrical, lighting and signage;
- \* Pavement markings, including centerline, edge striping and edge reflectors; and
- \* Installation of redesigned drainage and modifications to existing utilities.

### **Planning and Programming Status**

Project Definition is complete.

### **Design Progress**

Design is 100% complete.

### **Construction Progress**

Construction contract awarded to R & L Brosamer Inc. on March 23, 2009.

Construction Notice to Proceed issued May 11, 2009.

Taxiway 'R' opened on May 24, 2010.

Construction is 100% complete.

### **Budget Status**

The final change orders have been negotiated. Final processing is anticipated to complete in March 2011. This project is expected to complete under budget.

### **Schedule Status**

Final project acceptance expected in April 2011.

### **Issues**

---

## **AIRSIDE ELEMENT - LAX Aircraft Rescue and Fire Fighting Facility (M107A)**

### **Project Description**

The new Aircraft Rescue and Fire Fighting Facility (ARFF) is proposed to be constructed as a replacement for the existing Fire Station No. 80. This new facility will be located on World Way West just west of Remain Over Night (RON) aircraft aprons situated relative to the mid-points of the outmost runways (Runway 6L/24R on the north and Runway 7R/25L on the south). The proposed ARFF would provide approximately 27,500 square feet of administrative office area and station living quarters within a 2-story structure, six bays for emergency vehicles along with a service bay, storage area for various emergency response equipments, and briefing and training rooms.

### **Planning and Programming Status**

Project Definition is complete.

### **Design Progress**

Design is 100% complete.

### **Construction Progress**

Construction contract awarded to Tobo Construction on June 10, 2009.

Administrative Notice to Proceed issued July 10, 2009.

Construction Notice to Proceed issued September 4, 2009.

Construction is 100% complete.

The Grand Opening of the LAX Aircraft Rescue and Firefighting Station 80 was held on November 22, 2010.

### **Budget Status**

This project is expected to complete under budget.

### **Schedule Status**

Completed final change order negotiations in February 2011.

Certificate of Occupancy was issued on February 17, 2011.

Project acceptance is anticipated in March 2011.

### **Issues**



## AIRSIDE ELEMENT - Bradley West - Aprons (M205A)

### **Project Description**

The Bradley West Aprons project contains an East and West component. The Bradley West Aprons project consists of approximately 34,000 square yards of pavement and associated drainage covering the aprons on the west side of the north and south Concourses as well as the apron west of the Core. This apron construction includes all grading, utilities, airfield signage and lighting; construction of LADWP power and communication ductbanks; and the LAWA power and communication ductbanks.

The Bradley East Aprons project entails construction of approximately 121,000 square yards of pavement and associated drainage from the edge of the new Concourses to the edge of Taxilanes C10/D10. It includes all grading, drainage, utilities, airfield signage and lighting; construction of LADWP power and communication ductbanks; and the LAWA power and communication ductbanks.

### **Planning and Programming Status**

Project Definition is complete.

### **Design Progress**

West Aprons awarded design is 100% complete.  
East Aprons design is 50% complete.

### **Construction Progress**

The Bradley West Gates and Core - West Aprons:  
Walsh-Austin Joint Venture construction of the Bradley West Aprons started in June 2010 and is scheduled to complete in July 2012.

East Aprons -  
No construction contracts awarded.

### **Budget Status**

This project is tracking on budget.

### **Schedule Status**

This project progressing on schedule.

### **Issues**

## AIRSIDE ELEMENT - Taxilane 'S' (M204A)

### **Project Description**

This project undertakes the relocation of certain ancillary and support facilities; and constructs a 3,785-foot long Taxilane to connect Taxiway 'B' on the south and Taxiway 'E' on the north. Taxilane 'S' will be constructed as part of a 400 foot wide Portland Cement Concrete (PCC) paved strip which will be the first part of the future Dual Taxilane / Taxiway System between the proposed Midfield Satellite Concourse and the Tom Bradley International Terminal. The centerline is located 242 feet west of the existing Taxiway 'Q' centerline. A 169-foot-Object Free Area (OFA) will be provided on the east side of the Taxilane 'S' centerline in accordance with the FAA approved Airport Layout Plan (ALP). This construction also includes the relocation of fuel lines and other utilities, all grading, airfield signage and lighting, construction of LADWP power and communication ductbanks; and the LAWA power and communication ductbanks. Additionally, Taxiway D will be extended approximately 1,000 feet west from Taxiway Q.

The project also includes the construction of approximately 60,000 square yards of pavement and associated drainage covering the aprons on the west side of the north and south Concourses as well as the apron west of the Bradley Core. This apron construction includes all grading, utilities and airfield signage; construction of LADWP power and ductbanks; and the LAWA power and communications ductbanks.

### **Planning and Programming Status**

Project Definition is complete.

### **Design Progress**

Design is 100% complete.

### **Construction Progress**

Construction contract awarded to Flatiron West, Inc. on December 7, 2009.  
Administrative Notice to Proceed issued on December 18, 2009.

Construction Notice to Proceed issued on March 1, 2010.

Concrete batch plant was operational in February 2011. Econcrete paving began in February 2011.

Construction is 30% complete.

### **Budget Status**

Additional funds were allocated for the LAWA Power Electrical Duct Banks and LAX Fuel Duct Bank Revisions.

---

## AIRSIDE ELEMENT - Taxilane 'S' (M204A) - Continued

### Schedule Status

Taxilane 'S' is anticipated to open June 2011. However, schedule impacts from various sources including additional contaminated soil, World Way West utilities, resequencing the DWP duct bank installation, and guard post 5 design revisions are threatening this completion date. Recovery schedule was submitted by Flatiron and is currently under review.

### Issues

- \* New natural gas service to the Bradley West across new Taxilane 'S' will have schedule and cost impacts.
- \* New storm drain construction south of the Concourse Construction Package (CCP) may need to be accelerated to provide construction access for Walsh Austin.
- \* LAWA is evaluating whether to accelerate the Contractor's paving operations to meet the scheduled opening of Taxilane S in June 2011.
- \* Remain Overnight (RON) position 5 paving work adjacent to Taxiway Romeo will need to be paved by the Taxilane S contractor and will have schedule and cost impacts.

## AIRSIDE ELEMENT - Taxilane 'T' (M306A)

### **Project Description**

The project consists of the construction of a 3,166-foot long Taxilane to connect Taxiway 'C' on the south and Taxiway 'D' on the north. Taxilane 'T' will be constructed as part of a 300 ft. wide Portland Cement Concrete (PCC) paved strip which will be the second part of the future Dual Taxilane / Taxiway System replacing existing Taxiways 'Q' and 'S', west of reconfigured Tom Bradley International Terminal (TBIT). The Taxilane 'T' centerline is located 818 feet west of the existing Taxiway 'Q' centerline. A 169-foot-Object Free Area (OFA) will be provided on the west side of the Taxilane 'T' centerline in accordance with the FAA approved Airport Layout Plan (ALP). This construction also includes the Taxilane "T" Service Road, the relocation of fuel lines and other utilities, all grading, airfield signage and lighting, construction of LADWP power ductbanks; and the LAWA power and communication ductbanks. This Scope of work also includes associated projects which consist of the Demo American Airlines (AA) Low Bay Hangar, Relocate and Demo H2O Deluge System, Demo Existing Sky Chef airline catering facility, Partial Demo American Airlines (AA) (former TWA) Hangar, an Emission Reduction Credit and Site Restoration of Southwest Apron Remain Overnight (RON) parking area.

### **Planning and Programming Status**

Project Definition is complete.

### **Design Progress**

The design for the Southwest Apron Remain Overnight (RON) parking area was awarded to Post, Buckley, Schuh & Jernigan, Inc. (PBS&J) in September 2010. Task Order 1 was approved in January 2011. Task Order 2 is being routed for approval.

The design contract for Taxilane T was awarded to Kimley Horn & Associates with Notice to Proceed issued on December 30, 2010. Task Order 1 (Taxilane T) is pending final approval. Task Order 2 (TWA Hangar) is being reviewed and negotiated.

The design of the Demo AA Low Bay Hangar and Deluge System will be completed at the end of March 2011 by AECOM, Inc.

### **Construction Progress**

No construction contracts awarded.

### **Budget Status**

This project is tracking on budget.

---

## AIRSIDE ELEMENT - Taxilane 'T' (M306A) - Continued

### **Schedule Status**

The Southwest Apron Remain Overnight design is expected to be 100% complete in May 2011.

Taxilane T design has commenced in March 2011.

The Demo AA Low Bay Hangar and Deluge System's Bid is anticipated to be advertised in March 2011 with bids due in May 2011.

### **Issues**

Delayed site access availability of Sky Chef and American Airlines Leaseholds may impact project schedule.

---

## AIRSIDE ELEMENT - Demolition of Existing Concourses (M210A)

### **Project Description**

Upon completion of the new Bradley West Concourses, this project includes demolition of the existing concourses with the exception of Gate 123, demolition of any existing utilities and restores the site to an appropriate state for Apron construction.

### **Planning and Programming Status**

Project Definition is complete.

### **Design Progress**

No design contract awarded.

### **Construction Progress**

No construction contract awarded. Currently evaluating the merits of adding this scope to the Walsh Austin Joint Venture contract.

### **Budget Status**

This project is tracking on budget.

### **Schedule Status**

This project is progressing on schedule.

### **Issues**

---

## **AIRSIDE ELEMENT - Pavement Management Program - VNY Taxi Lane A2 Rehabilitation and RSA Improvements (A010A)**

### **Project Description**

This project will rehabilitate the existing asphalt concrete pavement for Taxi Lane A2 and construct a dual taxi lane, among other improvements. Additionally, this project will improve airfield lighting and signage for Taxi Lane A2 and improvements on Runway Safety Area (RSA) for Runway 16L/34R.

### **Planning and Programming Status**

Project Definition is complete.

### **Design Progress**

Design is 100% complete.

### **Construction Progress**

Construction contract awarded to Griffith Company on August 2, 2010.

Administrative Notice to Proceed was issued on September 7, 2010.

Construction is 85% complete.

### **Budget Status**

This project is tracking on budget.

### **Schedule Status**

Construction Notice to Proceed was issued in November 8, 2010. The project's original completion date of February 2011 was extended to March 2011 due to rain delays.

### **Issues**

## **BRADLEY WEST ELEMENT - Bradley West Gates (M201A)**

### **Project Description**

The project consists of the construction of new double-loaded North and South Concourses at Tom Bradley International Terminal (TBIT). The configuration of the concourses will be based upon the approved aircraft parking layout consisting of nine (9) A380 gates and five (5) Airplane Design Group (ADG) V gates and three (3) narrow-body gates. In addition, the work will consist of constructing approximately 540,000 sq ft of space for passenger services (concessions, toilets etc.), building systems (mech/elect/plumbing), building maintenance, airline operations, retail/food service concessions, concessions storage areas, back of house secured circulation space and airline lounges. The project will also include Building Systems (pedestrian transportation systems, HVAC, electrical and plumbing, drainage, lighting), Telephone System, Life Safety Systems (PA and smoke/fire detection, alarm and sprinkler) and Terminal Systems such as Electronic Visual Information Display System (EVIDS), baggage conveyance, building management systems, access control, intrusion alarm, etc.

### **Planning and Programming Status**

Project Definition is complete.

### **Design Progress**

Design is 90% complete.

### **Construction Progress**

Heavy steel erection continues on the South Concourse.

Shoring, excavation and foundation work are on-going on South Concourse Piers.

MEP activities continue on North Concourse.

Curtainwall activities on North Concourse have commenced.

Architectural shear wall pours at North Piers have commenced.

Underground utilities and Jet Bridge foundation work on going on northeast apron.

### **Budget Status**

This project is anticipated to complete on budget (inclusive of contingency reserves).  
Component Guaranteed Maximum Price 01 through 12 have been approved by the Board.  
Buy out is 89% complete.



---

## BRADLEY WEST ELEMENT - Bradley West Gates (M201A) - Continued

### Schedule Status

Gate 134 Substantial Completion  
Target Date: 08/01/12      Forecast Date: 09/25/12

West Gates Substantial Completion  
Target Date: 12/12/12 Forecast Date: 12/12/12

East Gates (North and South) Substantial Completion  
Target Date: 10/19/13 Forecast Date: 11/26/13

### Issues

WAJV has not submitted a schedule update for the month of December 2010. The submittal requirement of five (5) days before the end of each month has been relaxed for this specific schedule submittal so that WAJV can work on the Bulletin 0 Time Impact Analysis (TIA).

WAJV will resume the schedule update process once initial effort for the Bulletin 0 process is underway.

## **BRADLEY WEST ELEMENT - Bradley West Core Improvements (M203A)**

### **Project Description**

This project will provide improvements to the Federal Inspection Service (FIS) facilities in Tom Bradley International Terminal (TBIT) and allow for the development of new 693,000 sf improved departure level (post security) passenger amenities, including new restrooms, concessions, airline lounges, and administrative offices within TBIT's existing north and south concourses; renovates, improves and enlarges the space used by the FIS and the Customs and Border Patrol (CBP); constructs secure/sterile passenger corridors between TBIT and Terminals 3 and 4; and renovates and improves existing facilities throughout TBIT including re configuration of the security screening checkpoint.

### **Planning and Programming Status**

Project Definition is complete.

### **Design Progress**

Design is 80% complete.

### **Construction Progress**

Junction Structure #2 complete / Work on Junction Structure #1 continues.

Existing TBIT Wall demolition / Core excavation continues.

Core Basement Wall pours continue.

Wall / Spread footings in all areas continue.

### **Budget Status**

This project is anticipated to complete on budget (inclusive of contingency reserves).  
Component Guaranteed Maximum Price 01 through 13 have been approved by the board.  
Buy out is 58% complete.

### **Schedule Status**

New Core Substantial Completion

Target Date: 12/12/12                      Current Forecast Date: 1/18/13\*\*

\*\*Current forecast date includes the results of recovery planning efforts.

---

## BRADLEY WEST ELEMENT - Bradley West Core Improvements (M203A) - Continued

### Issues

The program critical path is driven by the start of Core Steel Erection, which is currently forecast to start in Early April 2011. This key start date is predicated on the fabrication and delivery of Core Steel, and the placement of concrete to support Core steel erection (foundations and basement walls).

Extended work hours continue in critical areas of the construction site, and when conditions are allowable.

WAJV has not submitted a schedule update for the month of December 2010. The submittal requirement has been temporarily relaxed so that WAJV can focus on the Core Bulletin 0 Time Impact Analysis (TIA). WAJV will resume the schedule update process shortly after the Core Bulletin 0 analysis is underway.

## **BRADLEY WEST ELEMENT - Construction Traffic Mitigations (M203B)**

### **Project Description**

The general scope of work involves improving roadway capacity at the two intersections identified by the Bradley West Project Environmental Impact Report as being affected by the Bradley West construction activities and enhancing safety at the future construction contractor parking area.

### **Planning and Programming Status**

Project Definition is complete.

### **Design Progress**

Design is 100% complete.

### **Construction Progress**

BOAC awarded construction contract DA-4478 to Griffith Company on June 28, 2010.

Administrative Notice to Proceed (NTP) was issued on July 29, 2010 and construction NTP issued September 7, 2010.

Overall construction is approximately 70% complete.

The widening for the first phase (Imperial Hwy. and Main St.) and the third phase (Pershing Dr. and Bradley West Dr.) were completed in January 2011.

### **Budget Status**

This project is tracking on budget.

### **Schedule Status**

The overall project is on schedule to be complete in May 2011.

### **Issues**

ADG continues to work with the contractor, Bureau of Street Lighting, Los Angeles Department of Transportation, and Los Angeles Department of Water and Power to facilitate installation of the permanent traffic signals and street lights and to complete the second phase (Imperial Hwy. and Pershing Dr.).

---

## **BRADLEY WEST ELEMENT - Art In Public Places (M308A)**

### **Project Description**

The program, part of the City of Los Angeles commitment to the community, commissions local artists to produce original artwork for public places. The City passed a law in 1989 allocating one percent of all capital improvement costs to commission art in public places. The Department of Cultural Affairs administers this program through its Public Art Division, aiming to utilize this one percent to contribute enduring, contemporary art experiences to public facilities in the City.

### **Planning and Programming Status**

Proposals from six nominated Los Angeles-based artists have been received and are being reviewed by the Art Oversight Committee (AOC).

### **Design Progress**

No design contract awarded.

### **Construction Progress**

No construction contract awarded.

### **Budget Status**

This project is tracking to the budget.

### **Schedule Status**

This project is anticipated to complete on schedule.

### **Issues**

## **CUP REPLACEMENT ELEMENT - Central Utility Plant (C001A)**

### **Project Description**

The project provides a replacement Central Utility Plant (CUP) to supply heating hot-water and chilled water to the Central Terminal Area (CTA); the required chillers, pumps, generators, boilers and piping to produce and distribute the hot and cold water; and gas turbine driven generators with heat recovery steam generators (co-generation). The project also includes:

Temporary Power and Associated Relocations Project (TPAR): Construction of a new substation to feed power to the existing CUP and installation of replacement switchgear to allow demolition of the CUP Maintenance Shop Building. This work also includes installing new underground utilities to replace the existing utilities within the footprint of the new CUP.

Utility Distribution System: This project includes interconnection to existing piping as well as providing completely new services to Bradley West and the existing terminals and the replacement or bypassing of some existing piping.

Demolition: Demolition of the existing CUP, cooling towers, an electrical substation and existing maintenance buildings located at the footprint of the new CUP.

Facility Management and Control System (FMCS): FMCS to be located in the control room and related control equipment to be furnished for installation in the mechanical rooms of the terminals.

### **Planning and Programming Status**

Project Definition is complete.

### **Design Progress**

Design is complete for award to the design build contractor. Design-Builder is now proceeding to develop Construction Documents.

### **Construction Progress**

The Walsh-Austin Joint Venture (WAJV) is responsible for the construction of the Temporary Power and Associated Relocations Project (TPAR). TPAR construction is delayed until late March 2011 due to weather impacts and contractor delays in the completion of their work.

CUP Design Builder Clark/McCarthy Joint Venture (CMJV) was issued an NTP on January 24, 2011. CMJV's on-site investigation commenced in February 2011.

CMJV has completed their procurement of the CUP Interim Maintenance Building with an award to a minority contractor and mobilization will begin in March 2011.

---

## CUP REPLACEMENT ELEMENT - Central Utility Plant (C001A) - Continued

### **Budget Status**

This project is tracking to budget.

### **Schedule Status**

CUP Design Builder Clark/McCarthy Joint Venture (CMJV) design schedule was submitted February 18, 2011 and the construction schedule submittal is anticipated in March 2011, 60 days after NTP as per contract.

CUP Interim Maintenance Building (IMB) is on the project critical path. CMJV awarded this contract in February. Delivery for the Butler Building to be complete early in May 2011, construction complete September 2011, with move-in during October 2011.

Design has been started with completion of a number of important workshops with LAWA. Submittal of a 30% package is expected by March 2011.

### **Issues**

TPAR potential schedule impact is currently under review. No anticipated impacts to follow-on CUP Design Builder, CMJV.

---

## UTILITIES & INFRASTRUCTURE ELEMENT - Airport Response Coordination Center (ARCC) (U009A)

### **Project Description**

This project will provide a centralized response coordination center on the 4th floor of the existing Badging Building located at 7333 World Way West at Los Angeles International Airport (LAX). The project will improve efficiency and communication for day to day operations and response to incidents by collocating various shared operational functionalities into one consolidated location. The new Airport Response Coordination Center will co-locate Airfield Operations, Terminal Operations, Construction and Maintenance, non-emergency Airport Police functions, and traffic management staff into a joint use facility. This new office environment, will utilize information technology for audio, video, CCTV, voice, network, Cable TV connections, PCs, and associated video wall and peripherals to improve situational awareness and communication among various Divisions and staff at LAX.

### **Planning and Programming Status**

Project Definition is complete.

### **Design Progress**

Design is 100% complete.

### **Construction Progress**

The construction contract was awarded to Technion Contractors, Inc. (TCI) on May 17, 2010 and the Notice to Proceed for construction was issued to TCI on June 14, 2010.

The ARCC went operational on December 15, 2010.

The contractor is completing final punchlist work to obtain final building permit sign-off.

### **Budget Status**

This project is tracking on budget.

### **Schedule Status**

This project was substantially completed and the ARCC began live operations on December 15, 2010.

### **Issues**

Problems with existing backup power systems at the Admin West Data Center (AWDC) require major electrical equipment replacement for full IT system redundancy. TCI is currently procuring an Uninterrupted Power Supply (UPS) unit to provide necessary redundancy for ARCC IT system and equipment in AWDC.



---

## **LANDSIDE ELEMENT - AOA Perimeter Fence (World Way West) Phase 3 (L003A)**

### **Project Description**

This project will enhance approximately 2.2 miles of fence from Taxiway AA to Coast Guard Road of LAX and will be constructed in the same manner as Phases 1 and 2. This project also provides security lighting and electrical duct banks along portions of World Way West from Taxiway AA to Coast Guard Road.

### **Planning and Programming Status**

Project Definition is complete.

### **Design Progress**

Design is 100% complete.

### **Construction Progress**

Construction contract awarded to Griffith Company December 8, 2008.

Notice to Proceed issued January 22, 2009.

Construction is 100% complete including final punch list items.

### **Budget Status**

This project has been completed under budget.

### **Schedule Status**

This project has been completed.

Final Change Orders and Payment Request are completed and processed.

Notice of Acceptance of the project has been filed with the County Recorder.

### **Issues**

None.

## LANDSIDE ELEMENT - Theme Building Restoration (L005A)

### **Project Description**

This project provides for the reconstruction of the upper and lower arches to restore the appearance and provide weather protection. The entire structure will be seismically retrofitted using FEMA 356/ASCE 41 as the design guideline to a Collapse Prevention level. This will be accomplished using a Tuned Mass Damper on top of the elevator core and bolting and lap splices for confinement at the basement, ground floor and plaza levels.

### **Planning and Programming Status**

Project Definition is complete.

### **Design Progress**

Design is 100% complete.

### **Construction Progress**

Construction contract awarded to Tower General Construction Group on July 7, 2008.

Notice to Proceed issued August 18, 2008.

Notice of Substantial Completion June 30, 2010.

Project is complete.

Notice of Final Acceptance Filed December 29, 2010.

### **Budget Status**

Phase I: Emergency Abatement for Upper Arch completed within budget.

Phase II: The Theme Building Restoration is tracking to the budget.

### **Schedule Status**

As of October 31, 2010, this project is complete.

### **Issues**

The negotiated excusable non-compensable time extension was approved and executed under Change Order No. 14. In addition to the time extension, LAWA received a \$96,000.00 credit from Tower General Contractors. Change Order was executed November 23, 2010 and included in the final payment.

---

## **RESIDENTIAL/SOUNDPROOFING ELEMENT - Aircraft & Noise Monitoring & Management System (ANMMS)-LAX (S004A)**

### **Project Description**

LAWA installed a state of the art Aircraft and Noise Monitoring and Management System (ANMMS) in 1990. The monitors measure noise 24 hours a day, 365 days a year. ANMMS measures airport generated noise in the community, tracks and identifies aircraft within a certain radius of the airport, and is used to help LAWA produce maps showing the noise impact area, as required by the State of California. LAWA continually monitors its ANMMS to ensure the accuracy of noise data and related operations information, and to improve the access to and utilization of the various types of available data.

### **Planning and Programming Status**

Project Definition is complete.

### **Design Progress**

Design is 100% complete.

### **Construction Progress**

Construction contract awarded to Lochard Corporation on October 4, 2004.

### **Budget Status**

This project is anticipated to complete on budget.

### **Schedule Status**

The system has been accepted and punch list activities are ongoing.

### **Issues**

None.

---

## **RESIDENTIAL/SOUNDPROOFING ELEMENT - Noise Mitigation/Soundproofing (City of LA) (S002A)**

### **Project Description**

This project will provide soundproofing of approximately 9,400 eligible dwelling units making them land use compatible.

### **Planning and Programming Status**

Not applicable.

### **Design Progress**

Corlett Skaer & DeVoto was selected for a Short Form Contract not to exceed \$150,000. NTP has been issued to design plans on 78 units.

### **Construction Progress**

Various Construction Contracts ongoing.  
This component of the Noise Mitigation / Soundproofing Program is 88% complete.

### **Budget Status**

This project is trending to complete on budget.

### **Schedule Status**

This project is on track to be completed in 2012.

### **Issues**

## TERMINAL ELEMENT - Elevators and Escalators Replacement (T001A)

### **Project Description**

This project will upgrade / replace all aging elevators, escalators and moving walkways at LAX, which have exceeded their useful life expectancy. These units will be upgraded/replaced in staggered Priority Groups.

### **Planning and Programming Status**

Project Definition is complete.

### **Design Progress**

Priority I Procurement - Design is 100% complete.

Priority I Site Mods - Design is 100% complete.

Priority II-IV Procurement - Design is 100% complete.

Priority II-IV Site Mods - Design is 100% complete.

Priority II-IV GC MRL Elevators - Design is 50% complete.

### **Construction Progress**

Priority I Procurement - Contract awarded to Kone, Inc. on May 18, 2009 - Procurement is 100% complete.

Priority I Site Mods - Construction contract awarded to W.E. O'Neil Construction Company on August 17, 2009 - Construction is 78% complete.

Priority II - Procurement - NTP issued to Schindler Elevator Corporation on April 19, 2010. Fabrication has begun.

Priority II-IV Site Mods - Bid window opened on December 21, 2010 - Bids due on March 3, 2011.

Priority III-IV GC MRL Elevators - No construction contracts awarded.

### **Budget Status**

Each active project remains on track to finish within the respective project budget.

### **Schedule Status**

The Priority 1 Units are currently running seventy-two working days behind schedule due to design deficiencies, incomplete as-built drawings, or a combination of both. Resequencing future work is underway and Milestone extensions are being issued to account for compensable delays.

### **Issues**

Sequence of work at Terminal 6 may cause delays to the current KONE contract - dependent on the Hensel-Phelps schedule.

---

## **TBIT RENOVATION ELEMENT - TBIT Interior Improvements and Baggage Screening Facilities (B001A)**

### **Project Description**

This project will renovate the interior public spaces (including the departure lobby; departure concourses; arrival concourses; bus hold room; meeter-greeter area; in-transit lounge; in-bound and outbound baggage system; upgrade the building's paging system, all IT Systems and upgrade the existing elevators, escalators, and moving walks) and construct the North New Large Aircraft Gates. The outbound baggage system will be pursuant to the requirements of the TSA and will include new "matrix" buildings to house the security screening equipment and TSA personnel.

### **Planning and Programming Status**

Project Definition is complete.

### **Design Progress**

Design is 100% complete.

### **Construction Progress**

Construction contract awarded to Clark/McCarthy Joint Venture September 8, 2006.  
Construction was substantially complete on February 7, 2010.  
The contract is in close-out phase.

### **Budget Status**

This project completed under budget.

### **Schedule Status**

The closeout phase is underway.

### **Issues**

---

## **TBIT RENOVATION ELEMENT - Passenger Boarding Bridges (PBB) Replacements & Extensions (B002A)**

### **Project Description**

This project will deliver and install 26 new passenger boarding bridges (PBBs) at LAX, 19 at Tom Bradley International Terminal, 4 at West Remote Boarding Facilities and 3 at Terminal 3. This project also constructs 6 extension PBBs at Ontario Terminals 2 and 4.

### **Planning and Programming Status**

Project Definition is complete.

### **Design Progress**

Design is 100% complete.

### **Construction Progress**

This project is complete.

### **Budget Status**

This project completed under budget.

### **Schedule Status**

This project is completed.

### **Issues**

## WORK IN PROGRESS OVERVIEW

### User's Guide - Work in Progress

This section lists the projects that are in various stages of pre-development. Typically, these projects represent efforts for which LAWA has committed funding for the design; not the construction. A project in this category will experience variability as the design is refined, until it is deemed operationally and economically viable and moved into an execution element.



---

## WORK IN PROGRESS - Interim Taxiway Safety Improvement Project (ITSIP) (A006B)

### **Project Description**

The Interim Taxiway Safety Improvement Project (ITSIP) relocates three high-speed exit taxiways between the North Airfield Runways. The relocated taxiways reduce the likelihood and severity of potential runway incursions without significant impacts to runway occupancy and operational efficiency. The construction elements include demolition of existing features, decommissioning of existing taxiways, construction of new taxiways involving concrete and asphalt pavement, pavement striping and marking, airfield lighting modifications and modifications to navigational equipment.

### **Issues**

The design was awarded to Post, Buckley, Schuh & Jernigan, Inc. (PBS&J) in September 2010. The scoping and cost validation work is underway.

---

## PROGRAM MASTER SCHEDULE OVERVIEW

### User's Guide - Schedule

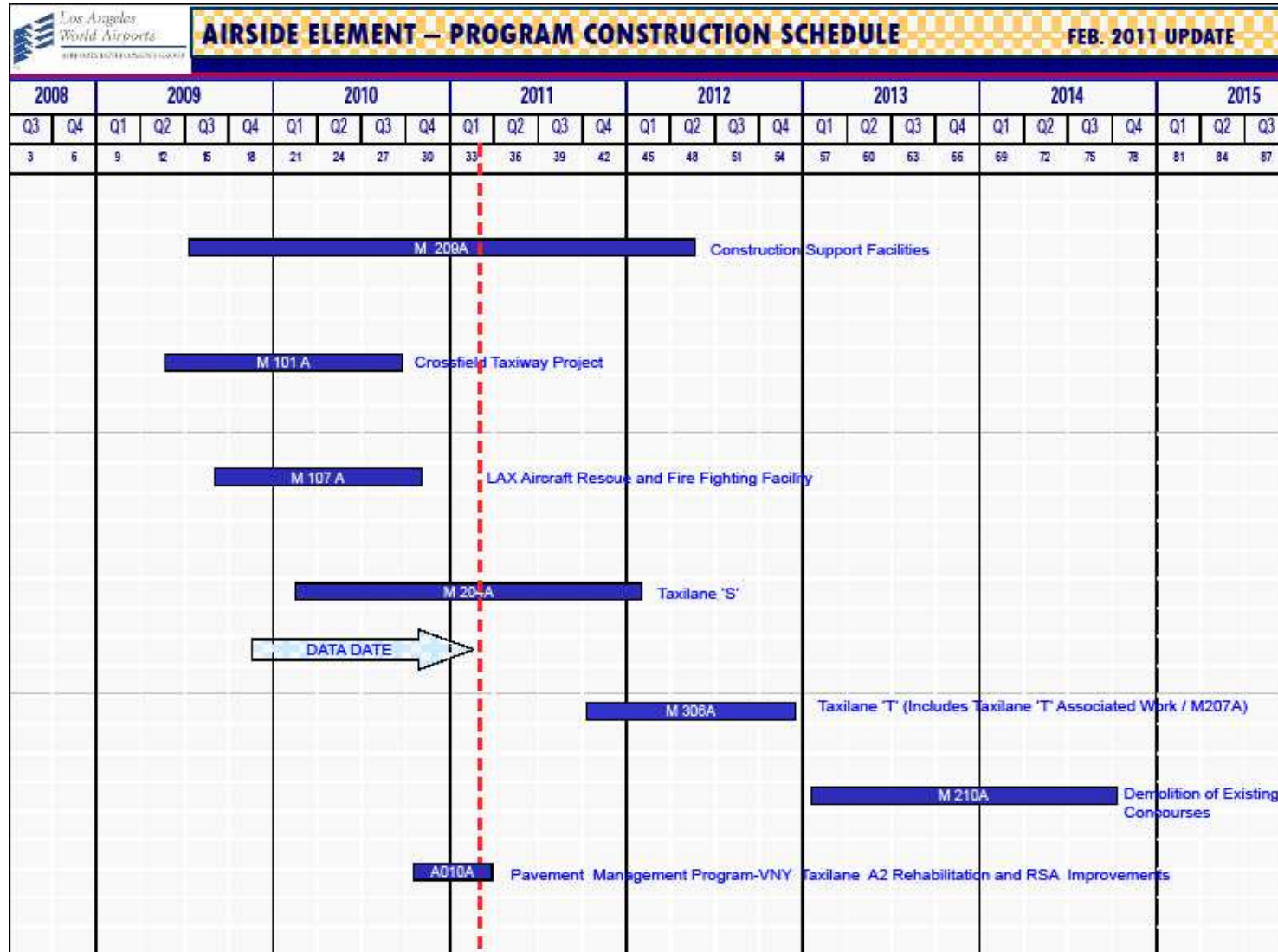
The information provided herein is designed to furnish users of the Airport Development Group (ADG) Program Construction Schedule Report with greater knowledge and a better understanding of the composition of the various components of the schedule report.

**Data Date** - Is a vertical line showing the current date of the report. Dates to the left side of the data date are known. Dates to the right side of the data date are projected.

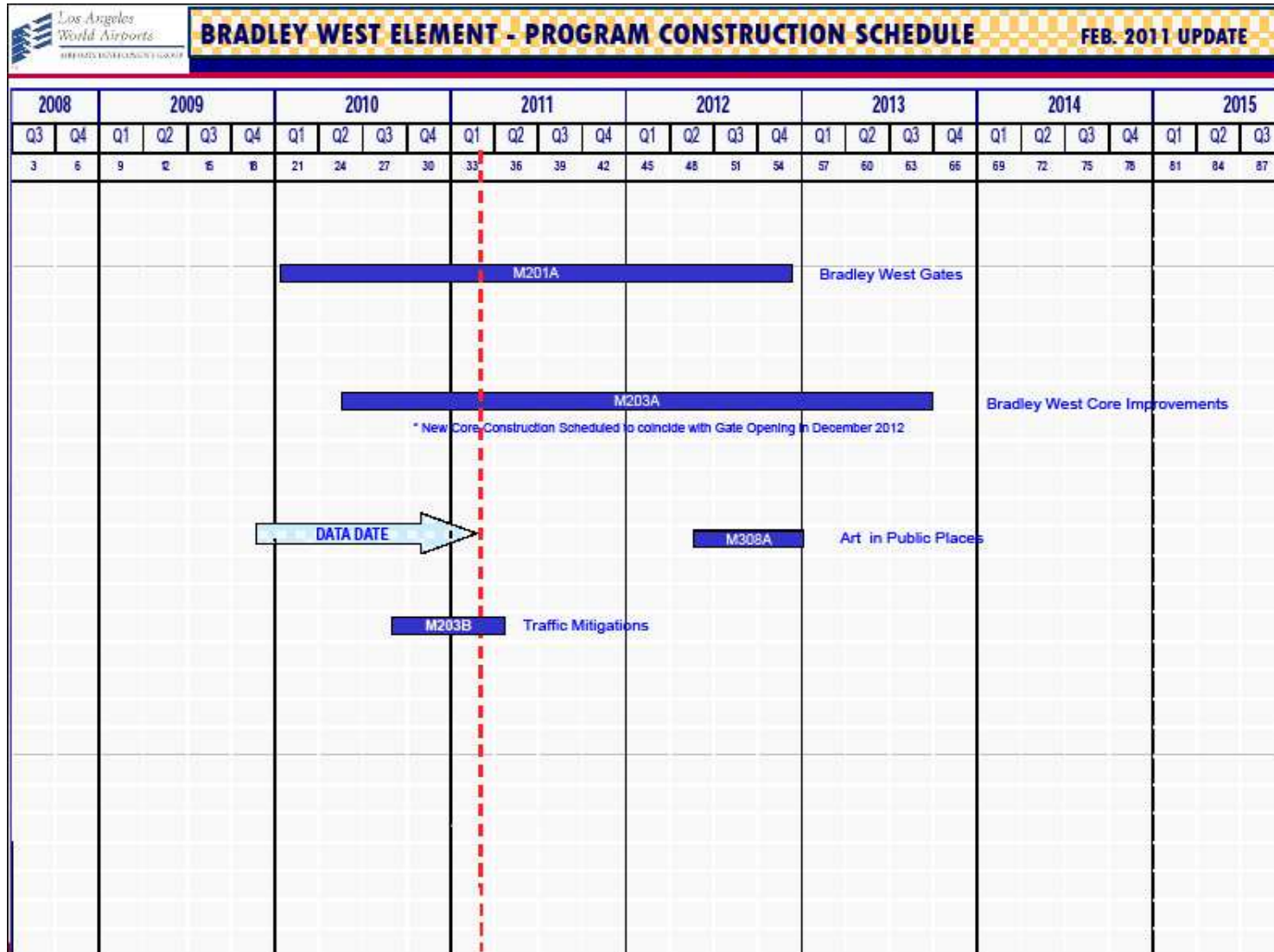
**Project Schedule Bar** - Is the blue bar which represents the construction phase for each project; with the exception of the Residential / Soundproofing projects which contains planning, design and construction phases.

**Project Number** - Is a unique identifier for each project that enables the reader to easily correlate scope, schedule and budget.

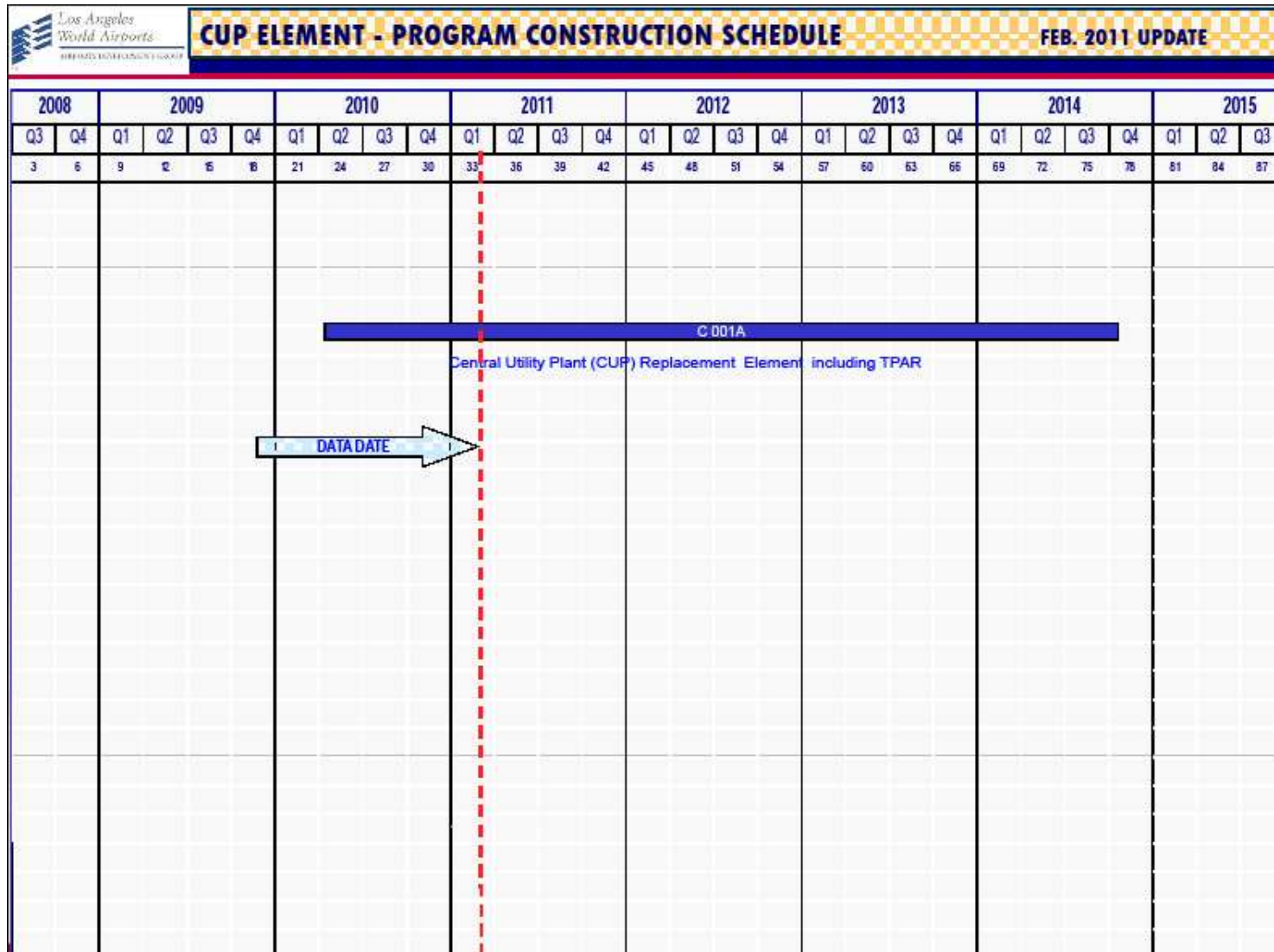
## PROGRAM MASTER SCHEDULE - Continued




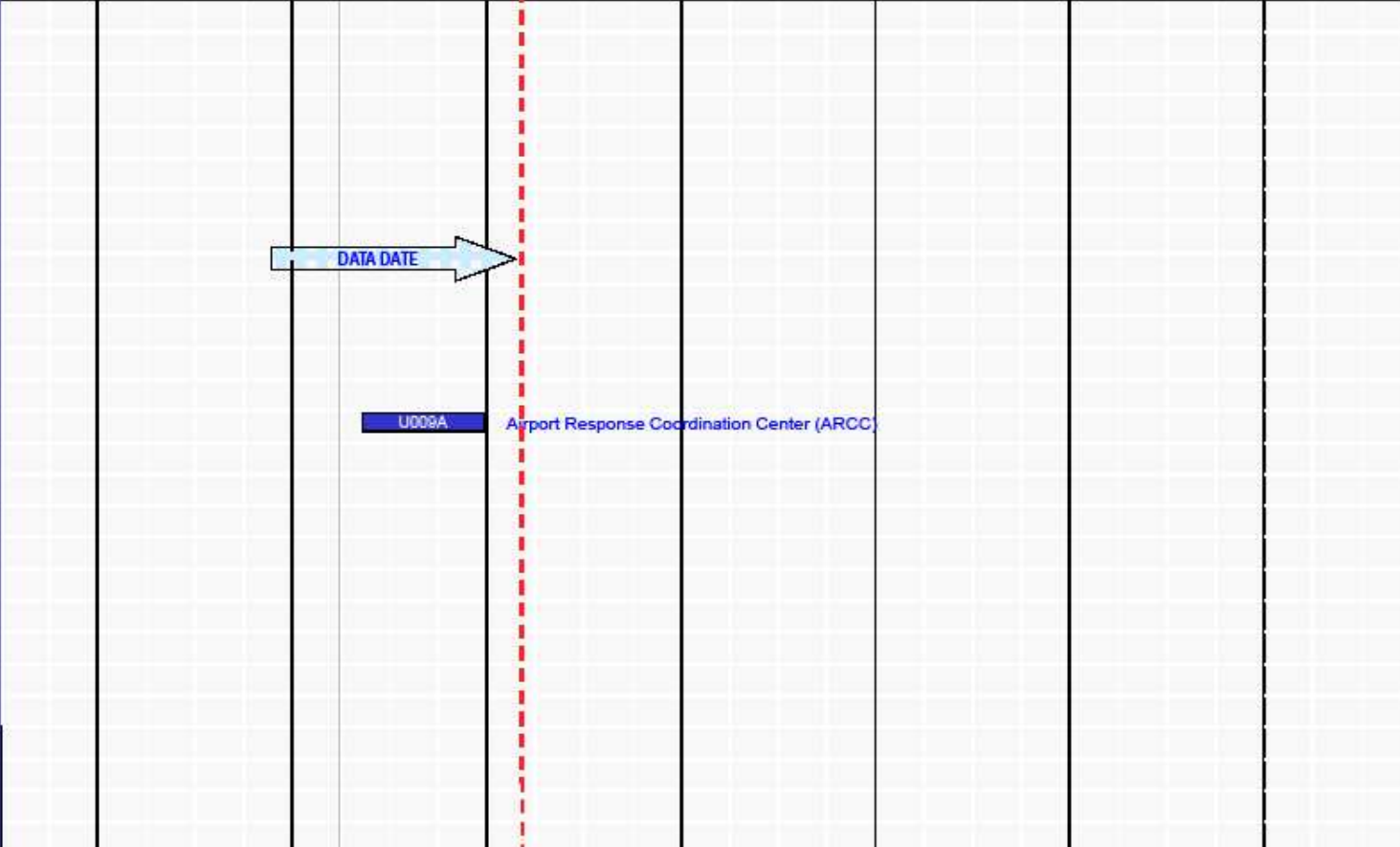
## PROGRAM MASTER SCHEDULE - Continued



## PROGRAM MASTER SCHEDULE - Continued

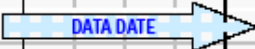


## PROGRAM MASTER SCHEDULE - Continued

 <span style="float: right; font-weight: bold;">UTILITIES &amp; INFRASTRUCTURES ELEMENT - PROGRAM CONST. SCHEDULE - FEB. 2011 UPDATE</span>																												
2008		2009				2010				2011				2012				2013				2014				2015		
Q3	Q4	Q1	Q2	Q3	Q4	Q1	Q2	Q3	Q4	Q1	Q2	Q3	Q4	Q1	Q2	Q3	Q4	Q1	Q2	Q3	Q4	Q1	Q2	Q3	Q4	Q1	Q2	Q3
3	6	9	12	15	18	21	24	27	30	33	36	39	42	45	48	51	54	57	60	63	66	69	72	75	78	81	84	87
<div style="position: relative; width: 100%; height: 100%;">  <div style="position: absolute; top: 45%; left: 25%; transform: translate(-50%, -50%);"> <p style="margin: 0;">DATA DATE <span style="font-size: 2em;">➔</span></p> </div> <div style="position: absolute; top: 55%; left: 25%;"> <p style="margin: 0; border: 1px solid black; padding: 2px;">U009A</p> <p style="margin: 0; color: blue;">Airport Response Coordination Center (ARCC)</p> </div> </div>																												

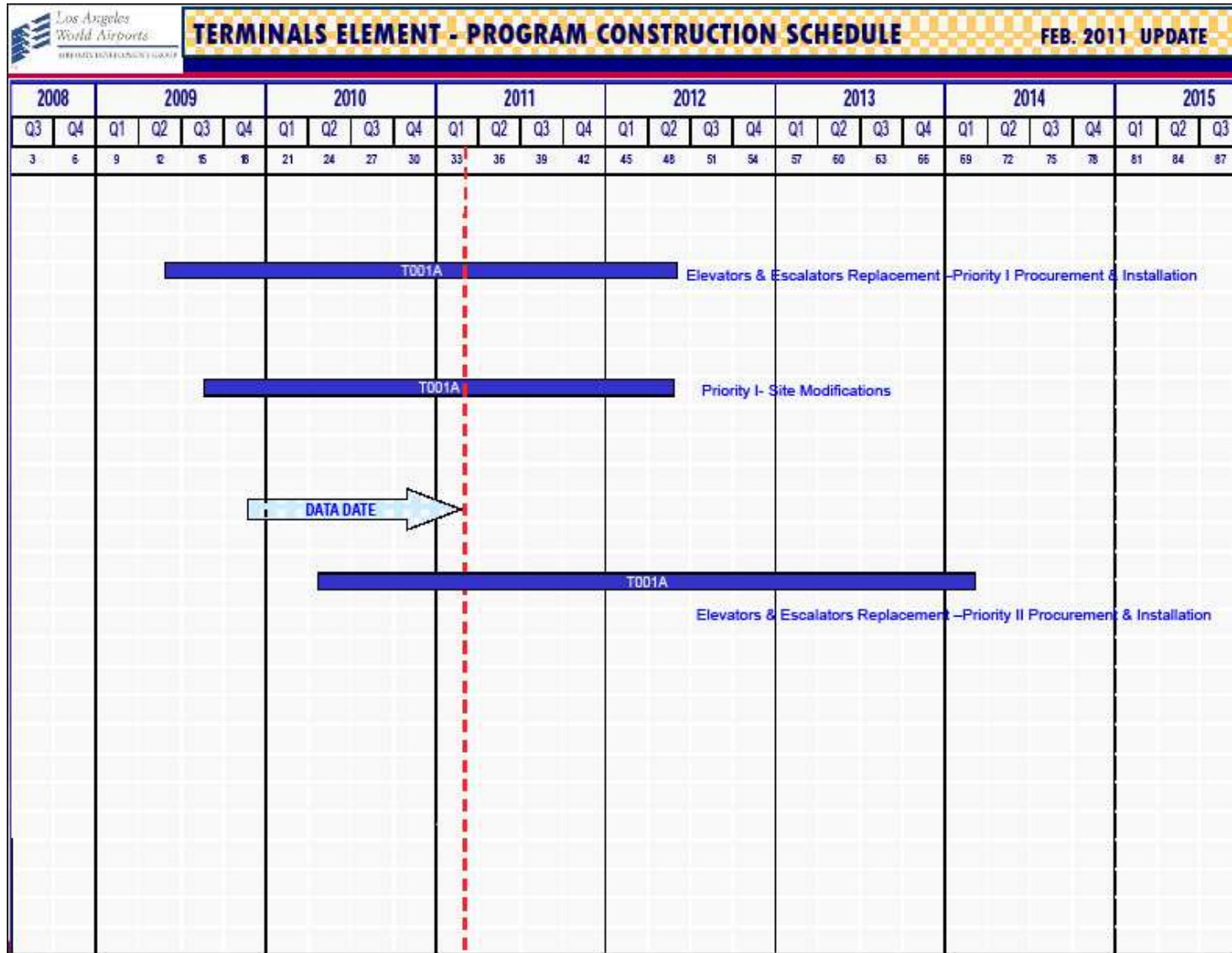


# PROGRAM MASTER SCHEDULE - Continued

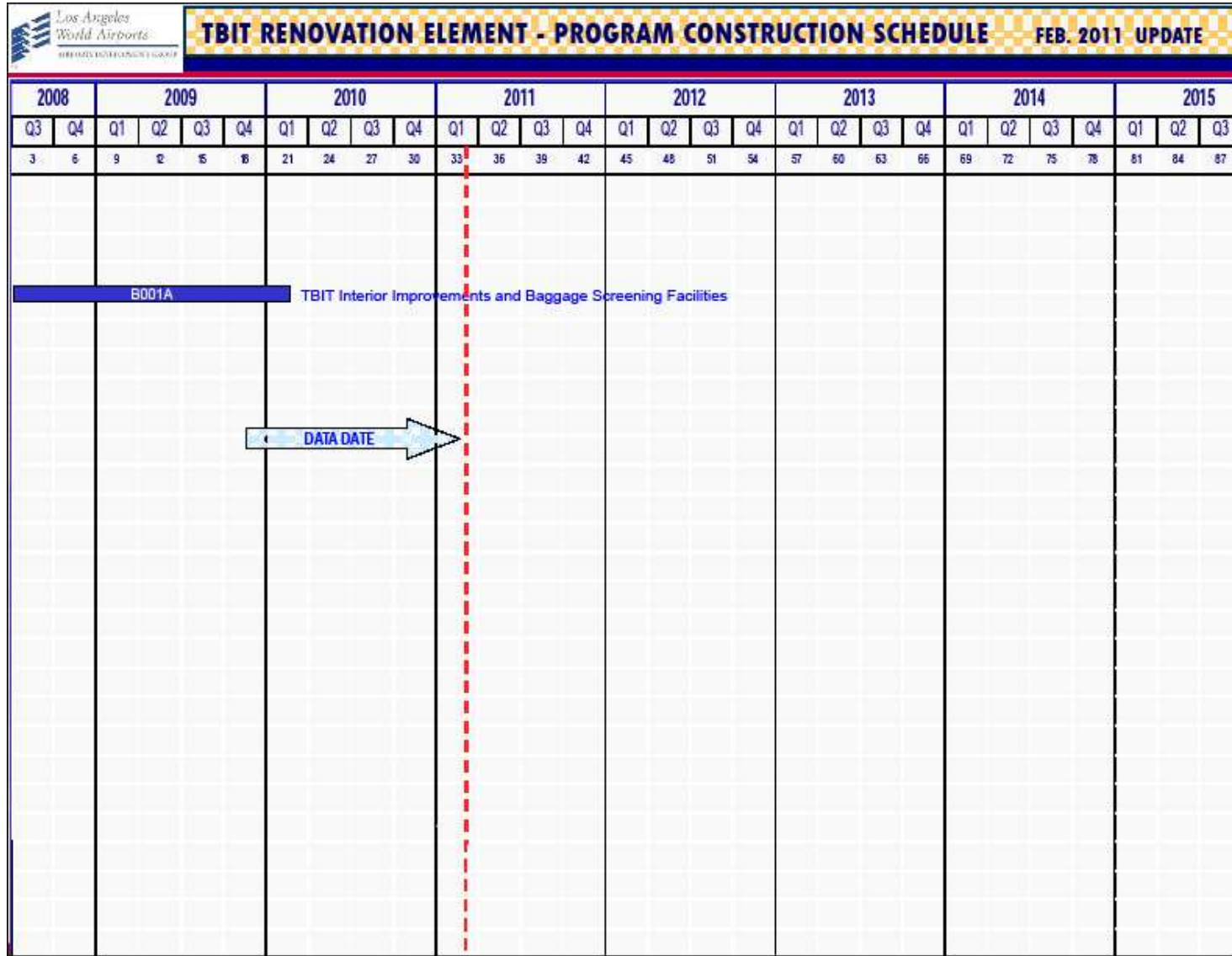
2008		2009				2010				2011				2012				2013				2014				2015		
Q3	Q4	Q1	Q2	Q3	Q4	Q1	Q2	Q3	Q4	Q1	Q2	Q3	Q4	Q1	Q2	Q3	Q4	Q1	Q2	Q3	Q4	Q1	Q2	Q3	Q4	Q1	Q2	Q3
3	6	9	12	15	18	21	24	27	30	33	36	39	42	45	48	51	54	57	60	63	66	69	72	75	78	81	84	87
S002A										Noise Mitigation / Soundproofing ( City of LA )																		
S004A										Aircraft & Noise Monitoring Management System (ANMMS) - LAX																		
																												



# PROGRAM MASTER SCHEDULE - Continued



## PROGRAM MASTER SCHEDULE - Continued



### User's Guide - Budget Reports

The information provided herein is designed to furnish users of the Airport Development Group (ADG) Budget Reports with greater knowledge and a better understanding of the composition of the various components of the budget report.

**Baseline Budget** - Is the estimated cost of the project as it was reported in the November 2009 report with the exception of the Crossfield Taxiway project which is from the February 2009 Operating Statement (OS) budget report.

**Current Budget** - Is the estimated cost of the project as it was planned plus or minus any processed revisions.

**Committed to Date** - Is the total contractual obligation to date for the project, e.g. awarded design contracts, awarded construction contracts, authorized task orders, etc.

**Incurred to Date** - Is the total of invoices received to date for the project.

**Estimate at Completion (EAC)** - Is the latest estimate of the total cost of the project.

**Variance** - Is the difference between Budget minus Estimate at Completion (EAC).

**Percent (%) Incurred** - Calculated as Incurred to Date divided by Estimate at Completion, this column provides a financial-oriented progress indicator.

**Percent (%) Contingency Used**: Calculated as the change in Contingency divided by Original Contingency, this column provides an indicator for project contingency-usage.

## PROGRAM COST SUMMARY REPORT

as of 1/31/2011

(dollars in thousands)								
Description	Baseline Budget	Current Budget	Committed to Date	Incurred to Date	Estimate at Completion	Variance (Budget-EAC)	% Incurred	% Cont Used
Airside Element	650,660	651,059	335,096	222,869	611,890	39,168	36%	53%
Bradley West Element	1,545,020	1,547,803	1,019,105	337,949	1,417,459	130,345	24%	0%
CUP Replacement Element	438,085	438,085	335,754	46,532	382,614	55,471	12%	0%
Utilities & Infrastructure Element	8,175	13,914	12,743	9,111	14,290	(376)	64%	66%
Landside Element	28,685	28,685	26,444	25,706	25,924	2,761	99%	20%
Residential/Soundproofing Element	183,233	163,233	151,191	143,507	163,233	0	88%	0%
Terminal Element	270,000	270,000	97,405	42,600	206,252	63,748	21%	8%
TBIT Renovation Element	755,343	755,343	737,914	735,043	738,396	16,946	100%	89%
<b>Subtotal</b>	<b>3,879,201</b>	<b>3,868,122</b>	<b>2,715,652</b>	<b>1,563,317</b>	<b>3,560,058</b>	<b>308,063</b>	<b>44%</b>	<b>30%</b>
Unallocated Contingency	N/A	267,117	0	0	N/A	N/A	N/A	N/A
<b>Subtotal</b>	<b>N/A</b>	<b>4,135,239</b>	<b>2,715,652</b>	<b>1,563,317</b>	<b>N/A</b>	<b>N/A</b>	<b>N/A</b>	<b>N/A</b>
Work in Progress	N/A	6,754	6,754	850	N/A	N/A	N/A	N/A
<b>Program Total</b>	<b>N/A</b>	<b>4,141,993</b>	<b>2,722,406</b>	<b>1,564,167</b>	<b>N/A</b>	<b>N/A</b>	<b>N/A</b>	<b>N/A</b>

Notes:

1. The current budget and estimate at completion excludes escalation

## AIRSIDE ELEMENT BUDGET REPORT as of 1/31/2011

(dollars in thousands)									
Project #	Description	Baseline Budget	Current Budget	Committed to Date	Incurred to Date	Estimate at Completion	Variance (Budget-EAC)	% Incurred	% Cont Used
M209A	Construction Support Facilities	14,790	8,425	7,060	5,971	7,397	1,028	81%	35%
M101A	Crossfield Taxiway Project	177,760	145,678	138,417	130,681	141,759	3,918	92%	91%
M107A	LAX Aircraft Rescue and Fire Fighting Facility	14,190	14,190	13,469	13,071	13,903	287	94%	87%
M205A	Bradley West - Aprons	111,870	111,870	25,107	13,285	102,820	9,050	13%	1%
M204A	Taxilane 'S'	174,980	154,118	135,334	52,404	152,439	1,679	34%	57%
M306A	Taxilane 'T'	96,500	156,208	9,299	4,853	144,898	11,310	3%	0%
M210A	Demolition of Existing Concourses	52,600	52,600	1,769	1,589	43,604	8,996	4%	0%
A010A	Pavement Management Program - VNY Taxilane A2 Rehabilitation and RSA Improvements	7,970	7,970	4,641	1,015	5,070	2,900	20%	0%
<b>Airside Element Total</b>		<b>650,660</b>	<b>651,059</b>	<b>335,096</b>	<b>222,869</b>	<b>611,890</b>	<b>39,168</b>	<b>36%</b>	<b>53%</b>

Notes:

1. The current budget and estimate at completion excludes escalation

## BRADLEY WEST ELEMENT BUDGET REPORT as of 1/31/2011

(dollars in thousands)									
Project #	Description	Baseline Budget	Current Budget	Committed to Date	Incurred to Date	Estimate at Completion	Variance (Budget-EAC)	% Incurred	% Cont Used
M201A	Bradley West Gates	742,954	744,879	579,256	213,486	708,991	35,888	30%	0%
M203A	Bradley West Core Improvements	793,164	795,089	432,493	123,262	700,856	94,233	18%	0%
M203B	Construction Traffic Mitigations	3,542	2,475	1,996	1,201	2,252	224	53%	0%
M308A	Art In Public Places	5,360	5,360	5,360	0	5,360	0	0%	0%
<b>Bradley West Element Total</b>		<b>1,545,020</b>	<b>1,547,803</b>	<b>1,019,105</b>	<b>337,949</b>	<b>1,417,459</b>	<b>130,345</b>	<b>24%</b>	<b>0%</b>

Notes:

1. The current budget and estimate at completion excludes escalation

## CUP REPLACEMENT ELEMENT BUDGET REPORT

as of 1/31/2011

(dollars in thousands)									
Project #	Description	Baseline Budget	Current Budget	Committed to Date	Incurred to Date	Estimate at Completion	Variance (Budget-EAC)	% Incurred	% Cont Used
C001A	Central Utility Plant	438,085	438,085	335,754	46,532	382,614	55,471	12%	0%
<b>CUP Replacement Element Total</b>		<b>438,085</b>	<b>438,085</b>	<b>335,754</b>	<b>46,532</b>	<b>382,614</b>	<b>55,471</b>	<b>12%</b>	<b>0%</b>

Notes:

1. The current budget and estimate at completion excludes escalation

## UTILITIES & INFRASTRUCTURE ELEMENT BUDGET REPORT

as of 1/31/2011

(dollars in thousands)									
Project #	Description	Baseline Budget	Current Budget	Committed to Date	Incurred to Date	Estimate at Completion	Variance (Budget-EAC)	% Incurred	% Cont Used
U009A	Airport Response Coordination Center (ARCC)	8,175	13,914	12,743	9,111	14,290	(376)	64%	66%
<b>Utilities &amp; Infrastructure Element Total</b>		<b>8,175</b>	<b>13,914</b>	<b>12,743</b>	<b>9,111</b>	<b>14,290</b>	<b>(376)</b>	<b>64%</b>	<b>66%</b>

Notes:

1. The current budget and estimate at completion excludes escalation



## LANDSIDE ELEMENT BUDGET REPORT

as of 1/31/2011

(dollars in thousands)									
Project #	Description	Baseline Budget	Current Budget	Committed to Date	Incurred to Date	Estimate at Completion	Variance (Budget-EAC)	% Incurred	% Cont Used
L003A	AOA Perimeter Fence (World Way West) Phase 3	17,162	17,162	15,017	14,344	14,497	2,665	99%	20%
L005A	Theme Building Restoration	11,523	11,523	11,427	11,362	11,427	96	99%	100%
<b>Landside Element Total</b>		<b>28,685</b>	<b>28,685</b>	<b>26,444</b>	<b>25,706</b>	<b>25,924</b>	<b>2,761</b>	<b>99%</b>	<b>20%</b>

Notes:

1. The current budget and estimate at completion excludes escalation

## RESIDENTIAL/SOUNDPROOFING ELEMENT BUDGET REPORT

as of 1/31/2011

(dollars in thousands)									
Project #	Description	Baseline Budget	Current Budget	Committed to Date	Incurred to Date	Estimate at Completion	Variance (Budget-EAC)	% Incurred	% Cont Used
S004A	Aircraft & Noise Monitoring & Management System (ANMMS)-LAX	3,233	3,233	3,233	3,021	3,233	0	93%	0%
S002A	Noise Mitigation/Soundproofing (City of LA)	180,000	160,000	147,958	140,486	160,000	0	88%	0%
<b>Residential/Soundproofing Element Total</b>		<b>183,233</b>	<b>163,233</b>	<b>151,191</b>	<b>143,507</b>	<b>163,233</b>	<b>0</b>	<b>88%</b>	<b>0%</b>

Notes:

1. The current budget and estimate at completion excludes escalation

## TERMINAL ELEMENT BUDGET REPORT

as of 1/31/2011

(dollars in thousands)									
Project #	Description	Baseline Budget	Current Budget	Committed to Date	Incurred to Date	Estimate at Completion	Variance (Budget-EAC)	% Incurred	% Cont Used
T001A	Elevators and Escalators Replacement	270,000	270,000	97,405	42,600	206,252	63,748	21%	8%
<b>Terminal Element Total</b>		<b>270,000</b>	<b>270,000</b>	<b>97,405</b>	<b>42,600</b>	<b>206,252</b>	<b>63,748</b>	<b>21%</b>	<b>8%</b>

Notes:

1. The current budget and estimate at completion excludes escalation

## TBIT RENOVATION ELEMENT BUDGET REPORT

as of 1/31/2011

(dollars in thousands)									
Project #	Description	Baseline Budget	Current Budget	Committed to Date	Incurred to Date	Estimate at Completion	Variance (Budget-EAC)	% Incurred	% Cont Used
B001A	TBIT Interior Improvements and Baggage Screening Facilities	750,174	750,174	733,470	730,933	733,952	16,221	100%	89%
B002A	Passenger Boarding Bridges (PBB) Replacements & Extensions	5,169	5,169	4,444	4,110	4,444	725	92%	0%
<b>TBIT Renovation Element Total</b>		<b>755,343</b>	<b>755,343</b>	<b>737,914</b>	<b>735,043</b>	<b>738,396</b>	<b>16,946</b>	<b>100%</b>	<b>89%</b>

Notes:

1. The current budget and estimate at completion excludes escalation
2. These Passenger Boarding Bridges are outside of TBIT

## WORK IN PROGRESS BUDGET REPORT as of 1/31/2011

(dollars in thousands)									
Project #	Description	Baseline Budget	Current Budget	Committed to Date	Incurred to Date	Estimate at Completion	Variance (Budget-EAC)	% Incurred	% Cont Used
A006B	Interim Taxiway Safety Improvement Project (ITSIP)	N/A	6,754	6,754	850	N/A	N/A	N/A	N/A
<b>Work in Progress Element Total</b>		N/A	<b>6,754</b>	<b>6,754</b>	<b>850</b>	N/A	N/A	N/A	N/A

Notes:

1. The current budget and estimate at completion excludes escalation

---

## PROGRAM CASH FLOW OVERVIEW

### User's Guide - Cash Flow

The information provided herein is designed to furnish users of the Airport Development Group (ADG) Cash Flow Reports with greater knowledge and a better understanding of the cash flow report.

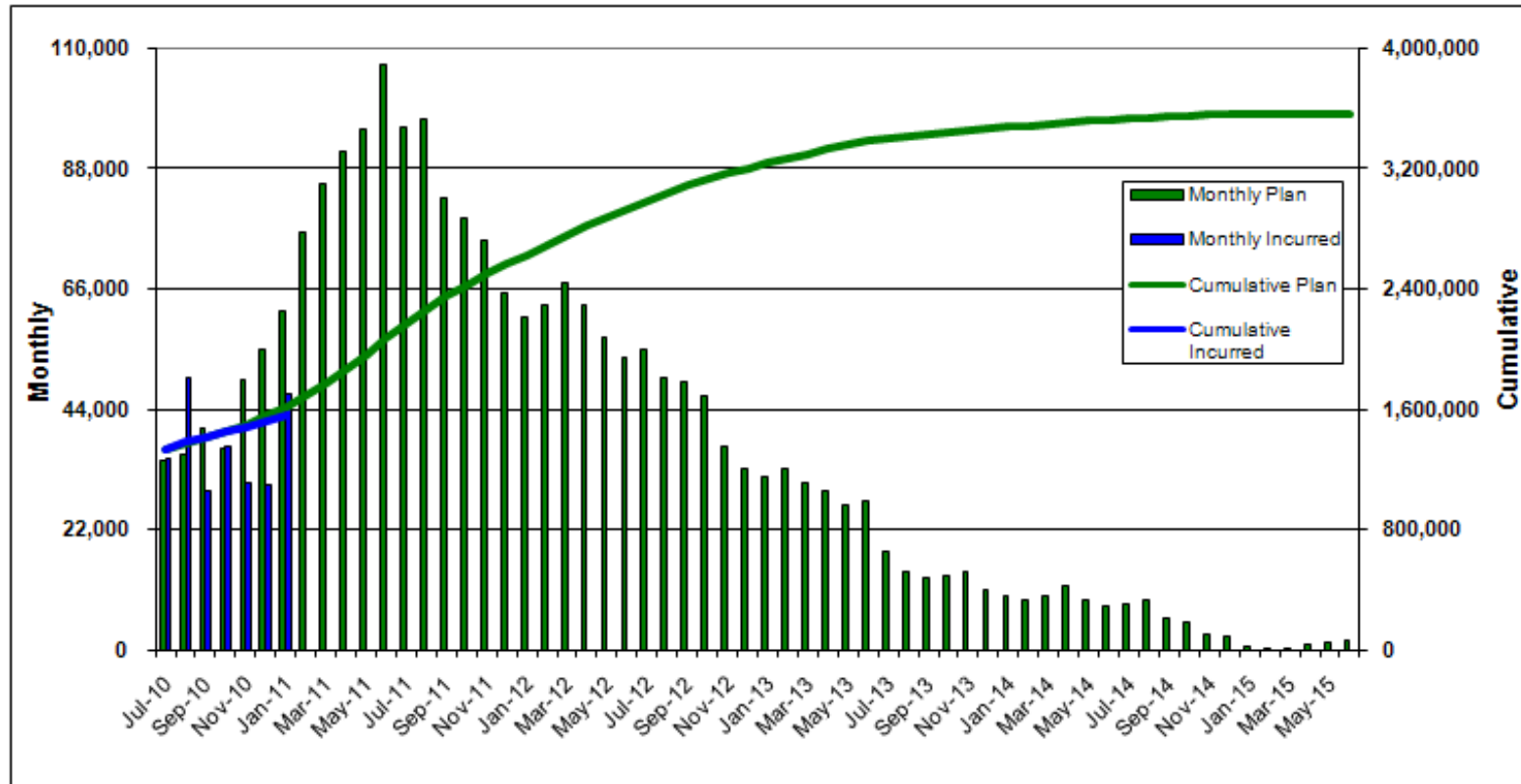
Monthly Plan - Is the estimated cost of the work anticipated for a given month.

Monthly Incurred - Is the cost of the work actually completed and invoiced for a given month.

Cumulative Plan - Represents the summation of the Monthly Plan amounts, to a given point in time, and provides the user with an overall forecast.

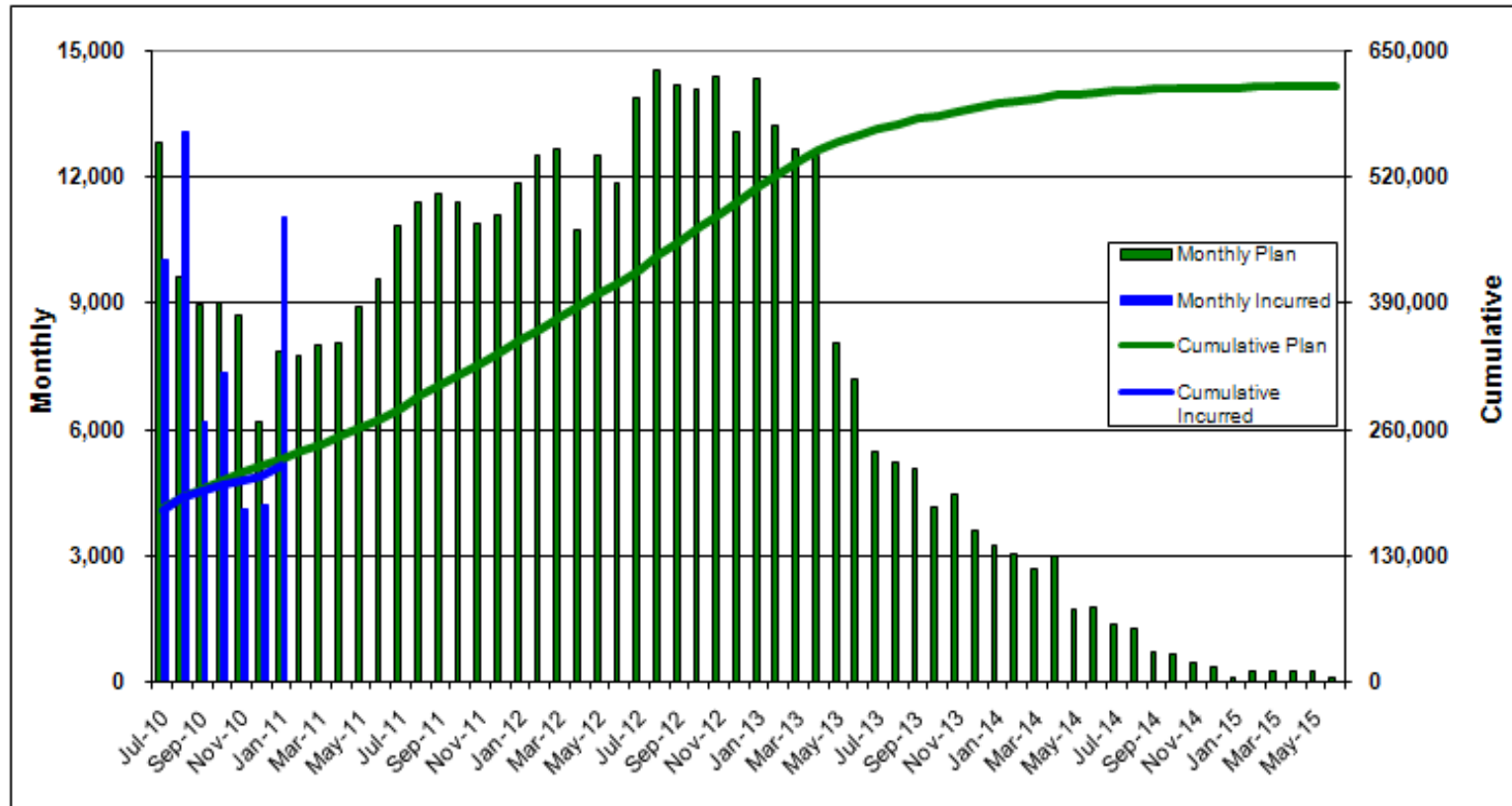
Cumulative Incurred - Represents the summation of the Monthly Incurred amounts, to a given point in time, and provides the user with the total amount invoiced.

## PROGRAM CASH FLOW as of 1/31/2011



- Notes:
1. Unallocated Contingency is not included.
  2. Escalation is not included.

## AIRSIDE ELEMENT CASH FLOW as of 1/31/2011

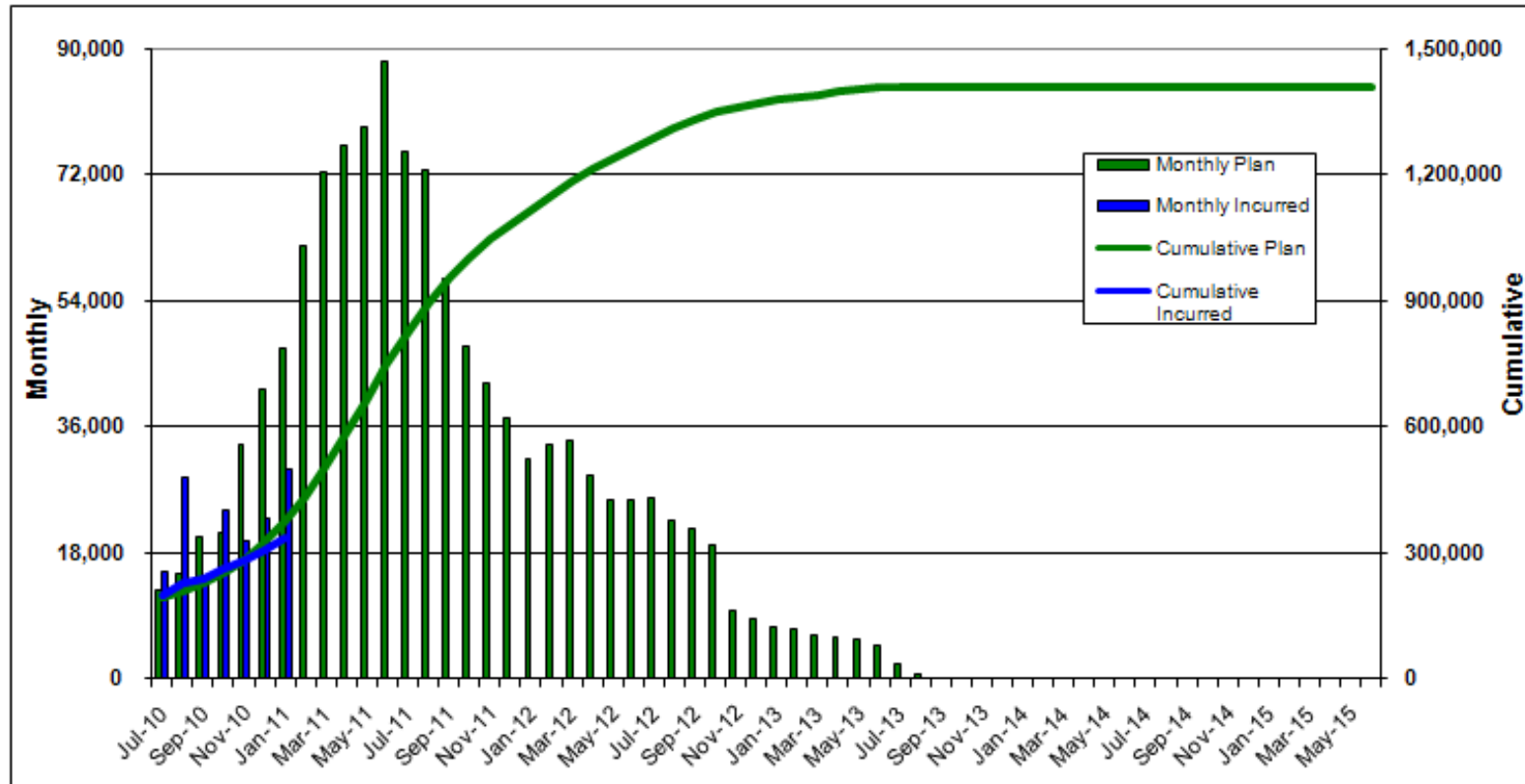


- Notes:
1. Unallocated Contingency is not included.
  2. Escalation is not included.



## BRADLEY WEST ELEMENT CASH FLOW

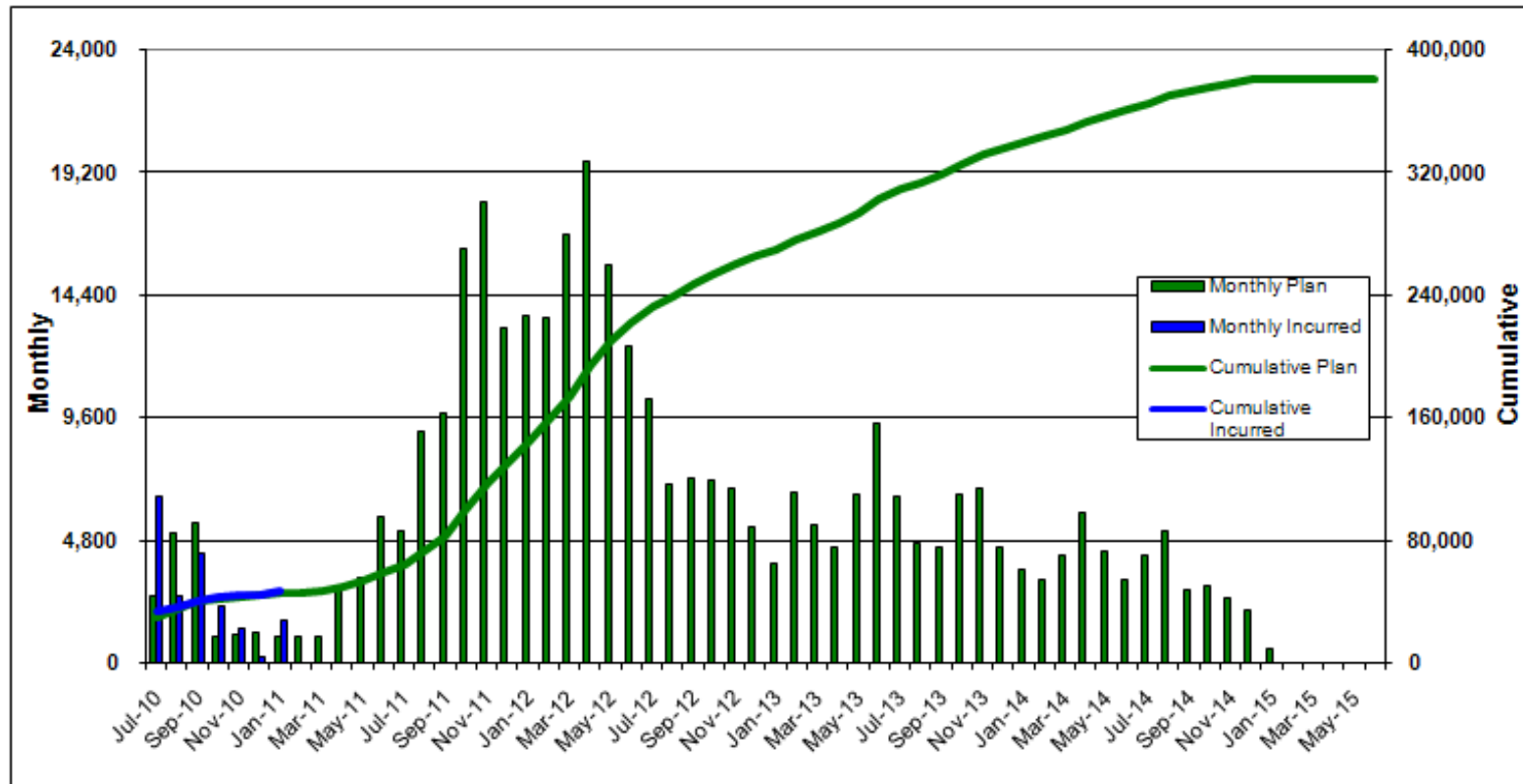
as of 1/31/2011



- Notes:
1. Unallocated Contingency is not included.
  2. Escalation is not included.

## CUP REPLACEMENT CASH FLOW

as of 1/31/2011

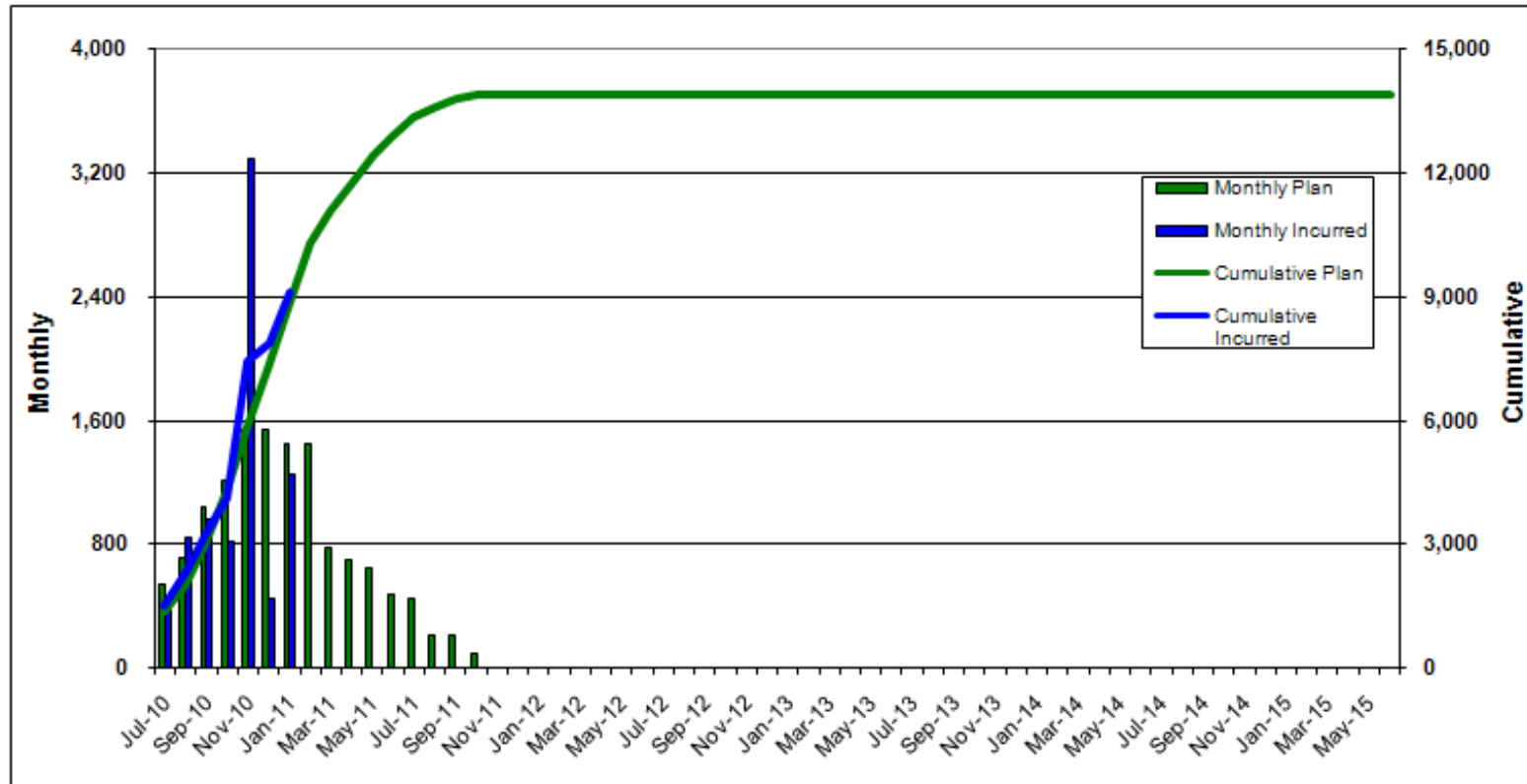


Notes:

1. Unallocated Contingency is not included.
2. Escalation is not included.

## UTILITIES & INFRASTRUCTURE ELEMENT CASH FLOW

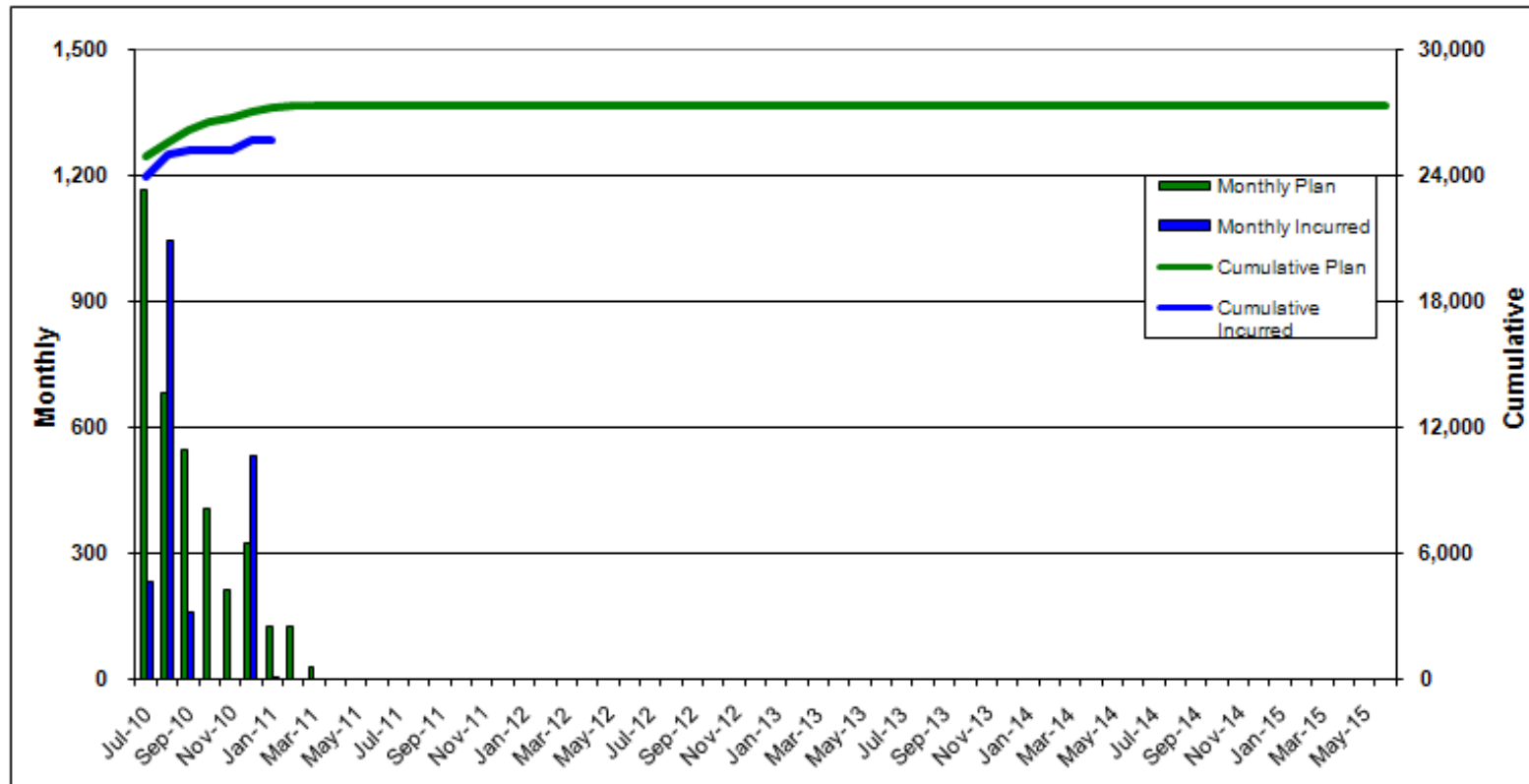
as of 1/31/2011



Notes:

1. Unallocated Contingency is not included.
2. Escalation is not included.

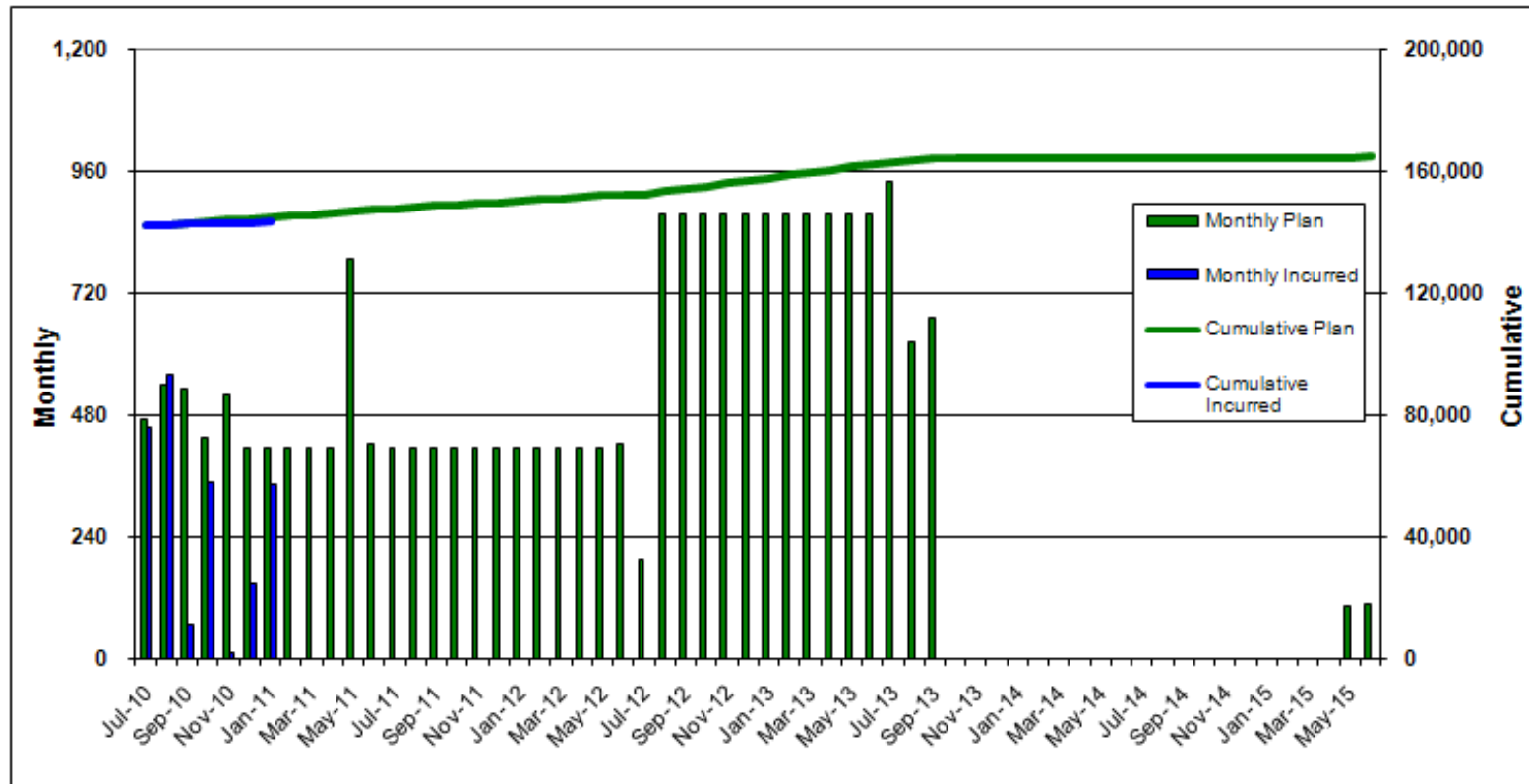
## LANDSIDE ELEMENT CASH FLOW as of 1/31/2011



- Notes:
1. Unallocated Contingency is not included.
  2. Escalation is not included.

## RESIDENTIAL/SOUNDPROOFING ELEMENT CASH FLOW

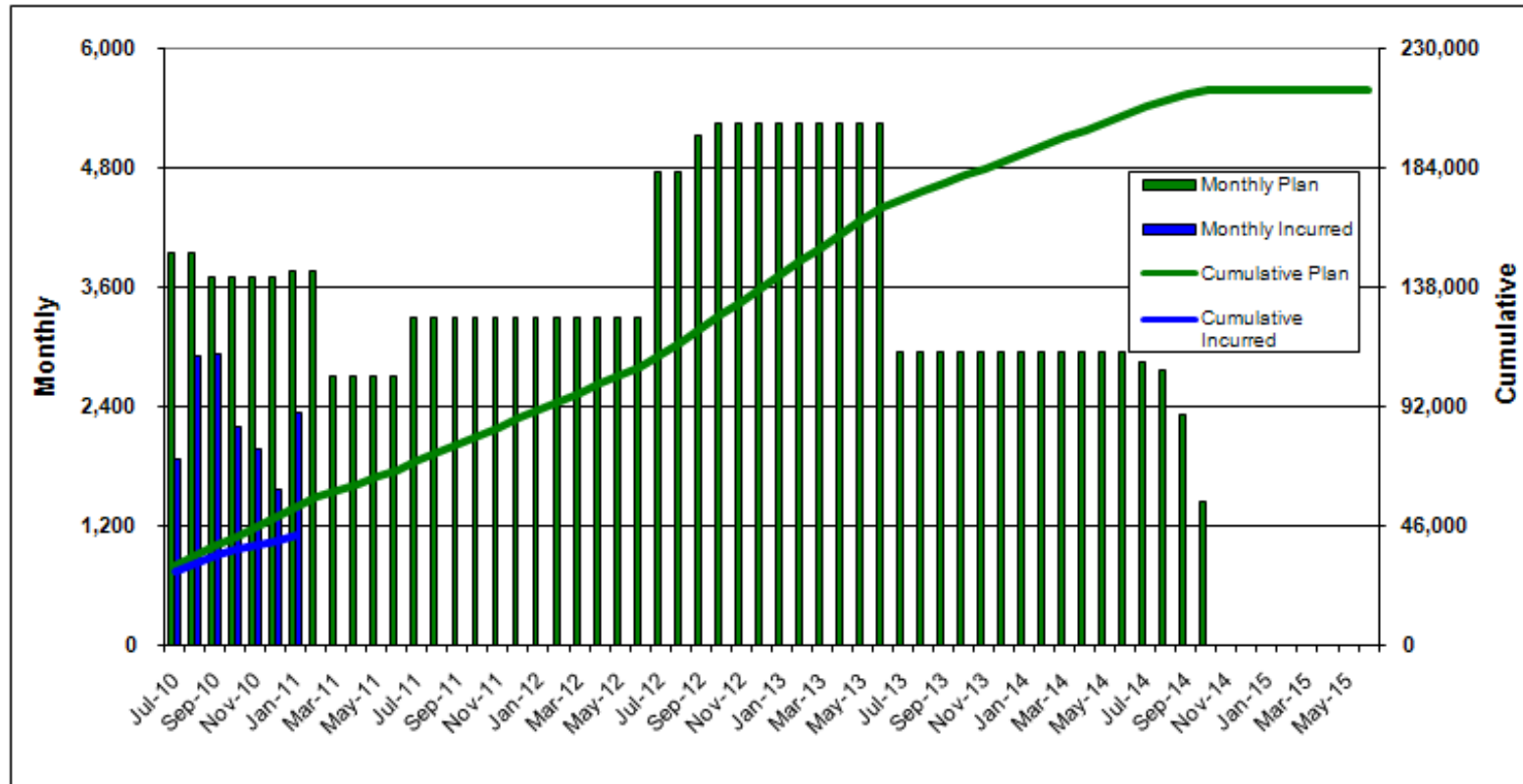
as of 1/31/2011



- Notes:
1. Unallocated Contingency is not included.
  2. Escalation is not included.

## TERMINALS ELEMENT CASH FLOW

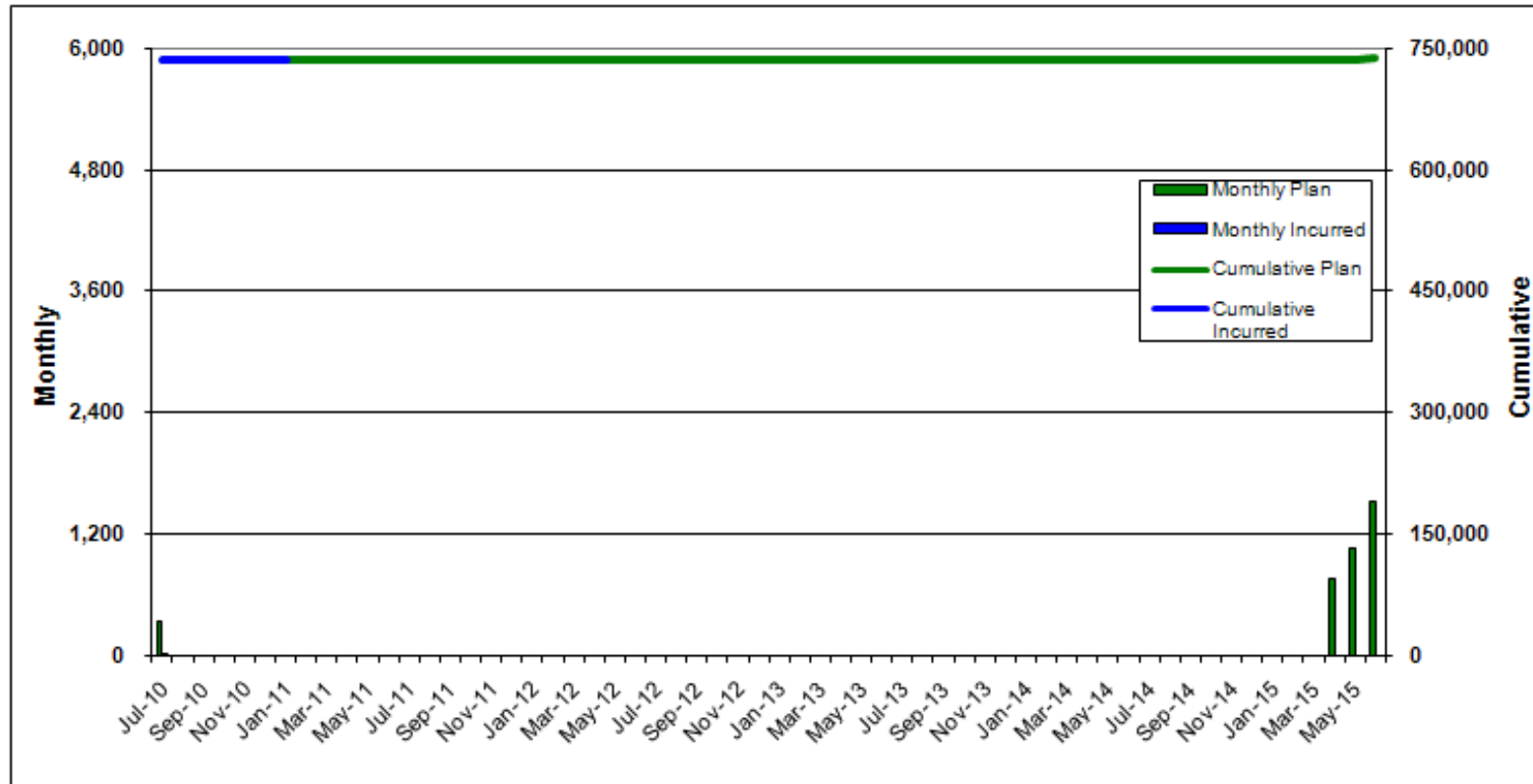
as of 1/31/2011



- Notes:
1. Unallocated Contingency is not included.
  2. Escalation is not included.

## TBIT RENOVATION ELEMENT CASH FLOW

as of 1/31/2011



Notes:

1. Unallocated Contingency is not included.
2. Escalation is not included.

### **User's Guide - Change Order**

The information provided herein is designed to furnish users of the Airport Development Group (ADG) Change Order Reports with greater knowledge and a better understanding of the composition of the various components of the change order report.

Change Orders - Process by which an adjustment is made to the total contract capacity.

CGMP Revision - Process by which the value of a CGMP is adjusted within the original total contract capacity. This process is employed by the Bradley West Element - Gates and Core projects in the administration of the Construction Management at Risk (CMAR) contracts.



## CHANGE ORDERS as of 2/28/2011

Element	Project	Contract	Change Order No	< \$150K	\$150K - \$1Mil	> \$1Mil	Notes
<b>Airside Element</b>							
<b>M107A - LAX AIRCRAFT RESCUE AND FIRE FIGHTING FACILITY</b>							
	DA-4354		0016	\$93,033			ACAMS Requirements, DWP Conduit Routing, Metal Panel Gypsum Backing, Site Sewer Piping Material, Projection Screen Deletion, North Side A.C. Pavement at North Retaining Wall, Exterior Curb, Concrete Curbs & Furring Wall, Day Room Step Lights and Projector Outlet, Backfill Around Light Pole and Enclosure Footing, Site Retaining Wall Detail
	DA-4354		0017	\$95,398			Mechanical Fire and Smole Dampers Addition, Hot Water Aquastat & Salvage Fuel Monitoring System, Miscellaneous Electrical Changes, Driveway Entrance Utilities, Miscellaneous Plumbing Changes
	DA-4354		0018	\$99,290			Miscellaneous Structural Changes, Gate Entrance Pedestal
<b>M204A - TAXILANE 'S'</b>							
	DA-4398		0014			\$2,711,430	Domestic and Fire Water Lines Revisions
<b>M209A - CONSTRUCTION SUPPORT FACILITIES</b>							
	DA-4338		0001	\$0			
	DA-4338		0002	\$0			
	DA-4338		0003	\$0			

## CHANGE ORDERS - Continued as of 2/28/2011

Element	Project	Contract	Change Order No	< \$150K	\$150K - \$1Mil	> \$1Mil	Notes
<b>Bradley West Element</b>							
<b>DA-4337 - BRADLEY WEST GATES (DA-4337)</b>							
	DA-4337/CGMP02		0026	\$11,183			CPCN 5258 East Egress: Addition of Suspended Ceiling at Gate 102 Corridor, CMAR Fee, City Tax
	DA-4337/CGMP02		0027	\$2,759			Curtainwall Layout Revisions per Submittal 0433-BWG-0, CMAR Fee, City Tax
	DA-4337/CGMP02		0028	\$6,892			Walters and Wolf - BWG Insulated Panel Change, CMAR Fee, City Tax
	DA-4337/CGMP02		0029	\$26,154			Quality Production Services - Drywall IWBT Sterile Arrivals Corridor RFI 1614 - QPS Drywall, CMAR Fee, City Tax
	DA-4337/CGMP02		0030	\$6,400			IWBT Additional Smoke Detector and Light, IWBT Electrical SASCO, CMAR Fee, City Tax
	DA-4337/CGMP02		0031	\$8,536			SASCO- Electrical IWBT, CMAR Fee, City Tax
	DA-4337/CGMP02		0032	\$24,848			XL Fire - Additional Fire Sprinkler Heads IWBT, CMAR Fee, City Tax
	DA-4337/CGMP02		0033	\$0			Sasco - Communications - BWGA
	DA-4337/CGMP02		0034	\$5,130			CPCN 5632 - IWBT - Replace Fixed CCTV camera with PTZ type camera, CMAR Fee, CMAR Fee
	DA-4337/CGMP02		0035	\$7,597			RFI 2247 Re-Sizing of Backspan Beams at Pier Framing, CMAR Fee, City Tax
	DA-4337/CGMP02		0036	\$512			IWBT RFI 2211 Light Fixture at Mezzanine Stairs, CMAR Fee, City Tax
	DA-4337/CGMP02		0037	\$5,923			CMAR Fee, City Tax, IWBT Connector Design Changes, IWBT Sterile Corridor Dust Cover
	DA-4337/CGMP02		0039	\$17,584			ISEC- Specialties -IWBT, CMAR Fee, City Tax
	DA-4337/CGMP03		0005	\$17,772			CPCN 5352 - CCP - Removal of Cable 5007 from Administration West to Admin East, CMAR Fee, City Tax
	DA-4337/CGMP04		0014			\$2,105,337	CD 0303R1 South Concourse Gate 159 Foundation Redesign, CMAR Fee, City Tax
	DA-4337/CGMP04		0015	\$79,823			CPCN 5616.01 - RFI 2406 - Revised Beam Connection at Moving Walkway Pits Concrete, CMAR Fee, City Tax
	DA-4337/CGMP04		0018	\$17,994			CPCN 5164 - Added Reinforcing Steel, CMAR Fee, City Tax
	DA-4337/CGMP04		0019	\$626			JT Wimsatt - Concrete BP-05, CMAR Fee, City Tax
	DA-4337/CGMP07		0006			\$1,534,265	Western Air Limbach - HVAC - BWGA, CMAR Fee, City Tax
	DA-4337/CGMP08		0002	\$14,725			CPCN 5633 - Change Fireplate Material for Data Outlets in Public Areas, CMAR Fee, City Tax
	DA-4337/CGMP09		0004	\$24,223			CPCN 5788 - O.C. Plastering - Exterior CD 0213 - GDN-018 Roof to Roof Soffit Panel/Downspout Enclosure/Metal Stud, CMAR Fee, City Tax
	DA-4337/CGMP10		0001	\$4,462			PCI - Interior Framing & Drywall, CMAR Fee, City Tax
<b>DA-4382 - BRADLEY WEST CORE (DA-4382)</b>							

**Bradley West Element**

**DA-4382 - BRADLEY WEST CORE (DA-4382)**

DA-4382/CGMP03	0005	(\$5,153)		GRICOM/TPAR - Utilities BP-035, CMAR Fee, CMAR Tax
DA-4382/CGMP03	0006	\$1,819		GRICOM/TPAR - Utilities BP-035, CMAR Fee, City Tax
DA-4382/CGMP06	0005		\$624,950	WM Klorman - Concrete BP-21, CMAR Fee, City Tax
DA-4382/CGMP08	0001	\$35,505		Desert - Plumbing, WAJV Fee, City Tax

## CHANGE ORDERS - Continued as of 2/28/2011

Element	Project	Contract	Change Order No	< \$150K	\$150K - \$1Mil	> \$1Mil	Notes
<b>CUP Replacement Element</b>							
<b>Utilities &amp; Infrastructure Element</b>							
<b>U009A - AIRPORT RESPONSE COORDINATION CENTER (ARCC)</b>							
	DA-4462/000000		0006	\$29,533			August 2010 Acceleration, September 2010 Acceleration, Diesel Fuel For Generator, Time-Extension - 59 Calendar Days
<b>Landside Element</b>							
<b>L003A - AOA PERIMETER FENCE (WORLD WAY WEST) PHASE 3</b>							
	DA-4315		0017	\$97,085			Modifications to AA Parking Lot Entrance, Modified Foundation for Type A Light Fixtures North of Bus Operations Area, Revisions to Delta Warehouse Fencing & Repairs to Sewer Connection for Cargo, Relocation of Conduit System for Type A Light Fixture North of Gate 407P, Removal of Chain Link Fence Adjacent to Pedestrian Gate 447, Waterproofing of Wall Penetrations, Credit for Unused Equipment Allowance, Credit for Deleted Obstruction Lights for Temporary Fencing, Credit for Modifications to Lighting Conduit at Blastwall in Zone 1, Credit for Deletion of Placement of Sand Bags, Credit for Removal of Demolition Work in Zone 1 and for Deletion of Access Panel in Zone 17, Compensation for Pull Boxes Purchased and Not Installed, Protection of 6-inch PVC Line at Bottom of Footing for Crash Gate 449, Removal and Replacement of Barrier Posts at Switchgears "CC" and "GG", Modifications to Perimeter Fence at Continental Airlines Post #1, Installation of New Pole Breakers for Gate Motors, Modifications to Type 2 Fence Alignment at FedEx Leasehold
	DA-4315		0018	(\$243,455)			Asphalt Paving of Former Planter Area in Zone 2, Removal of Oversized Fence Foundations in Zones 17-20, Final Unit Price Quantity Adjustments, Lump Sum Unit Price Scope Adjustments, Credit for Unused DWP Allowance, Credit for Unused ACAMS Allowance, Credit for Type-C Light Fixture Assemblies Not Installed, Non-Compensable Seventy (70) Calendar Day Time Extension Associated with LADWP Work, Non-Compensable One Hundred and Seventy-Nine (179) Calendar Day Time Extension to the Contract, Contractor's Agreement with the Unilateral Change Orders
<b>Residential/Soundproofing Element</b>							
<b>Terminal Element</b>							

**CHANGE ORDERS - Continued**  
as of 2/28/2011

Element	Project	Contract	Change Order No	< \$150K	\$150K - \$1Mil	> \$1Mil	Notes
TBIT Renovation Element							

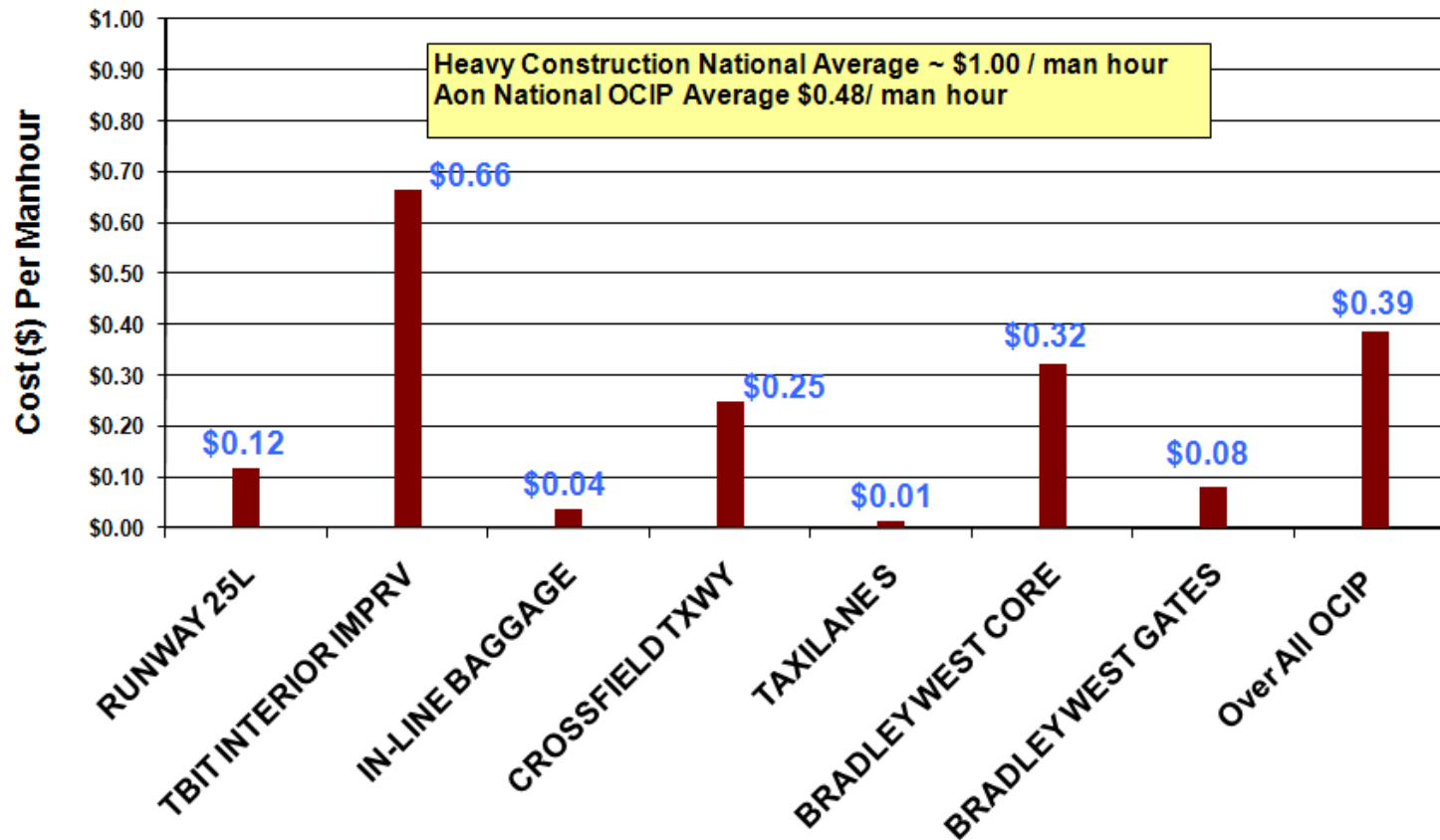
### Bradley West- Gates

CHANGE TYPE	EXECUTED CHANGES (CUMMULATIVE \$)	APPROVED CHANGES (CUMMULATIVE \$)	SUBTOTAL	% OF CONTRACT VALUE
DESIGN EVOLUTION	\$5,291,622.00	\$8,740,520.00	\$14,032,142.00	2.57%
DOCUMENT CORRECTION	\$277,601.00	\$50,322.00	\$327,923.00	0.06%
FIELD CONDITIONS	\$138,504.00	\$105,654.00	\$244,158.00	0.04%
OWNER BETTERMENT	\$3,047,022.00	\$32,302.00	\$3,079,324.00	0.56%
CODE REQUIREMENT	\$139,611.00	\$65,987.00	\$205,598.00	0.04%
<b>TOTAL</b>	<b>\$8,894,360.00</b>	<b>\$8,994,785.00</b>	<b>\$17,889,145.00</b>	<b>3.28%</b>

### Bradley West- CORE

CHANGE TYPE	EXECUTED CHANGES (CUMMULATIVE \$)	APPROVED CHANGES (CUMMULATIVE \$)	SUBTOTAL	% OF CONTRACT VALUE
DESIGN EVOLUTION	\$3,079,004.00	\$4,304,401.00	\$7,383,405.00	1.26%
DOCUMENT CORRECTION	(\$58,798.00)	\$0.00	(\$58,798.00)	0.01%
FIELD CONDITIONS	\$1,425,425.00	\$78,951.00	\$1,504,376.00	0.26%
OWNER BETTERMENT	\$3,671,511.00	\$0.00	\$3,801,793.00	0.65%
CODE REQUIREMENT	\$106,968.00	\$70,303.00	\$177,271.00	0.03%
<b>TOTAL</b>	<b>\$8,224,110.00</b>	<b>\$4,453,655.00</b>	<b>\$12,677,765.00</b>	<b>2.17%</b>

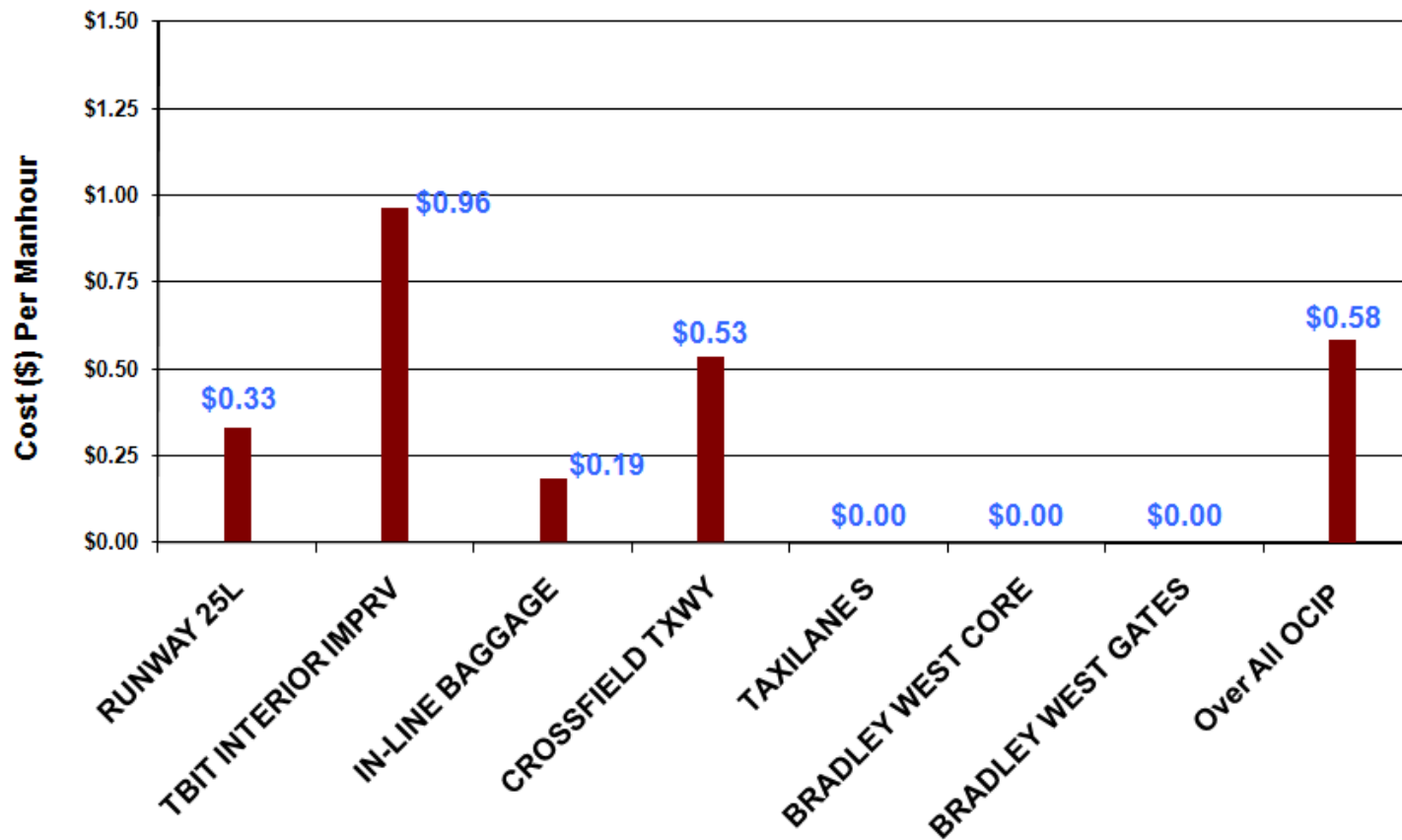
**LAWA OCIP Workers Compensation Loss Performance**  
 - as of January 31, 2011 -



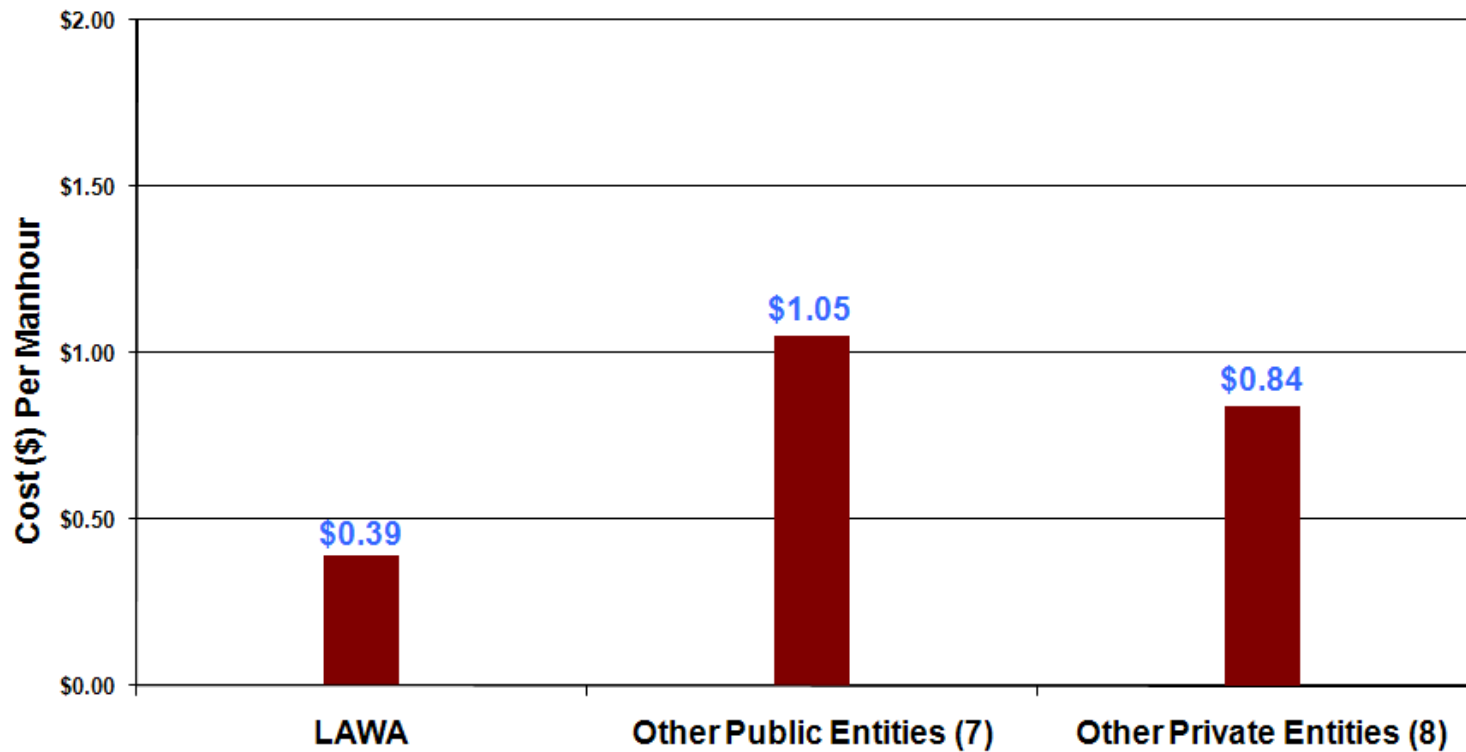


**OCIP - Continued**  
as of 1/31/2011

**LAWA OCIP General Liability Loss Performance**  
- as of January 31, 2011 -



**Current Large OCIP Projects  
Comparison of Workers Comp Costs Per Manhour**



## MWBE/DBE Subcontractor Utilization Summary Report as of 1/31/2011

Firm	Contract No.	DBE or M/WBE Contract	Proposed Level of Participation	Achieved Participation to Date*		Remarks
				M/WBE	DBE	
AECOM Technical Services, Inc.	DA-4260	DBE	12.00 %	N/A %	19.96 %	
CH2M Hill	DA-4414	M/WBE	22.00 %	34.58 %	N/A %	
Fentress Architects	DA-4274	DBE	9.30 %	15.73 %	6.88 %	
Flatiron West, Inc.	DA-4398	DBE	1.00 %	1.62 %	13.07 %	
Griffith Company	DA-4315	M/WBE	9.60 %	9.95 %	N/A %	
Griffith Company	DA-4338	M/WBE	6.60 %	2.42 %	N/A %	
Griffith Company	DA-4478	M/WBE	23.70 %	33.99 %	N/A %	
Griffith Company	DA-4498	DBE	0.35 %	2.51 %	0.00 %	
Hatch Mott MacDonald, LLC	DA-4275	DBE	11.63 %	N/A %	21.45 %	
Hellmuth, Obata + Kassabaum, Inc.	DA-4313	M/WBE	25.00 %	38.54 %	N/A %	
Jacobs Project Management Co.	DA-4417	M/WBE	25.00 %	0.00 %	N/A %	
Paragon Project Resources, Inc.	DA-4332	M/WBE	16.00 %	5.69 %	N/A %	
Parsons Transportation Group, Inc.	DA-4415	M/WBE	23.00 %	51.73 %	N/A %	
Paslay Management Group	DA-4324	M/WBE	10.00 %	16.59 %	N/A %	
R & L Brosamer	DA-4331	M/W/DBE	15.40 %	7.61 %	3.26 %	Combined = MBE+WBE+DBE = 10.87%
Technion Contractors	DA-4462	M/WBE	0.16 %	0.14 %	N/A %	
Tobo Construction	DA-4354	DBE	0.00 %	14.59 %	2.33 %	
Vanir Construction Management, Inc.	DA-4416	M/WBE	20.00 %	18.67 %	N/A %	
W.E. O'Neil	DA-4371	M/WBE	6.80 %	9.05 %	N/A %	
Walsh Austin Joint Venture - Pre-Construction (Gates)	DA-4337	M/WBE	20.00 %	31.40 %	N/A %	Achieved Participation from 12/31/10
Walsh Austin Joint Venture - Construction (Gates)	DA-4337	M/WBE	14.00 %	12.93 %	N/A %	Achieved Participation from 12/31/10
Walsh Austin Joint Venture - Pre-Construction (Core)	DA-4382	M/WBE	20.00 %	26.46 %	N/A %	Achieved Participation from 12/31/10
Walsh Austin Joint Venture - Construction (Core)	DA-4382	M/WBE	14.00 %	14.77 %	N/A %	Achieved Participation from 12/31/10
<b>Total Participation:</b>	<b>N/A</b>	<b>N/A</b>	<b>N/A</b>	<b>9.03%</b>	<b>8.68%</b>	
<b>Total Combined Participation:</b>	<b>N/A</b>	<b>N/A</b>	<b>N/A</b>	<b>17.71%</b>		

\*Achieved Participation to Date includes progress in the pledged program and progress outside of the pledge.

