

About the Knox Company

Since 1975, Knox has been manufacturing high security key boxes, key vaults, armored cabinets, key switches, padlocks, master key retention devices, narcotics drug lockers and locking FDC plugs and caps. This proven rapid entry system reduces response time, property damages and the liability for lost keys. More than 11,500 fire departments, military installations and the communities they serve depend on Knox products and services.



Knox Company
1601 W. Deer Valley Road
Phoenix, Arizona 85027



Knox-Box® Rapid Entry System



Master Key Retention



Gate Access



FDC Protection



Haz-Mat Cabinets



Narcotics Lockers



Elevator Box



Power Shutdown Station

ORDER TERMS AND CONDITIONS

NOTICE: When you provide a check as payment, you authorize us either to use information from your check to make a one-time electronic fund transfer from your account or to process the payment as a check transaction.

As used in this Order Terms and Conditions (the "Agreement"), the words "you," "your," and "customer" each mean the person or entity named on the face of this form as the Customer or Buyer. The words "we," "our," and "Knox" each mean Knox Associates, Inc. d/b/a The Knox Company, an Arizona corporation, with a place of business located at 1601 W. Deer Valley Road, Phoenix, Arizona 85027. The words "Equipment" or "Product" mean the products ordered under this agreement.

1. This Order is based upon these terms and conditions of this Agreement. **Knox rejects any and all other terms and conditions of sale proposed or discussed by the parties in connection with this Order or the resulting transaction. This Agreement shall constitute the entire and exclusive contract of sale between you and Knox, and any additional or different terms in any purchase order, counteroffers, or where ever contained are objected to and rejected.**

2. All orders for Products are subject to availability. We reserve the right to reject any order for any reason. We will use all reasonable efforts to deliver Products by a requested delivery date. However, delivery dates are approximate and we are not liable for delays in delivery for any reason.

3. Subject to payment in full, title to purchased Products will pass to you, FOB our shipping dock.

4. Before shipping Products to you, we will perform our standard factory inspection and acceptance tests on the unit, and satisfactory completion of inspection will constitute your acceptance of the unit. At your request, we will certify in writing our completion of inspection tests.

5. You shall pay all amounts due according to the payment terms on the face of this form, in United States dollars, delivered to us at the address stated on the invoice or as otherwise required by us. If you fail to pay any charges when due, in addition to such overdue amounts you shall pay a late-payment charge on the unpaid balance equal to the lesser of 1.5 percent per month or the lawful maximum. You have no set-off rights.

6. We warrant that Products ordered and subsequently sold to you under this Agreement will conform to our then-current published specifications for the Product and limited to the warranty period specified by Knox for that Product on the date of your order. We reserve the right to make changes to our products and have no obligation to alter previously purchased products. Our sole obligation to you and your exclusive remedy under this warranty is as follows: a) We will repair or replace without charge Products found to be defective so long as you return the Products to us, freight prepaid, to our service center in Phoenix, Arizona. b) We will not be required to ship a replacement unit we have confirmed through our examination that your item is in fact defective. We will pay freight costs to ship any repaired or replacement unit to you. If we are unable within a reasonable time to repair or replace your item, then you will be entitled to the refund of your purchase price. c) This warranty does not apply to any unit which we determine has been subjected by you or another party to (1) operating or environmental conditions in excess of our written specifications or recommendations; (2) damage, misuse or neglect; (3) improper installation, repair, modification or alteration; or (4) use for which it was not intended or designed. This warranty also excludes expendable items, such as lamps, fuses, or other parts which fail from normal use. This is our only warranty for Products. **KNOX EXPRESSLY DISCLAIMS ALL OTHER WARRANTIES, GUARANTEES OR REMEDIES – WHETHER EXPRESS, IMPLIED, OR STATUTORY – INCLUDING ANY IMPLIED WARRANTY OF MERCHANTABILITY OR FITNESS FOR A PARTICULAR PURPOSE.** We also disclaim any implied warranty arising out of trade usage or out of a course of dealing or course of performance. And in no event shall our liability to you exceed the limitations specified in Section 12.

7. You agree that the Knox Product ordered will be used only with the Knox Master Key issued to the Authorized Agency designated on this Order Form.

8. You acknowledge that the lock code and lock core in the Knox Product as delivered by the Knox Company may not be modified or altered in any manner except with the express authorization of the Knox Company.

9. You acknowledge that if you or any party on whose behalf you are acting alters, modifies or tampers with the Product or takes any action that compromises the Product's ability to be accessed with the Authorized Agency's Master Key, the Knox Company shall have the right to demand that the Product be removed from use, and that you indemnify and hold the Knox Company harmless from any claims or losses resulting from the such alteration or modification of the Product.

10. You acknowledge that all right, title and interest in all patents, copyrights, trademarks, trade dress, trade secrets and other intellectual property embodied within, covering or in any way regarding the Products is owned exclusively by Knox, or its licensor(s), and all rights with regard to such intellectual property are reserved. You represent, warrant and covenant that you will not claim any right, title or interest in, or use, any such intellectual property, including any and all codes to keys, keyways and keywrenches all of which remain exclusively the property of Knox or its licensor(s), and that you will not bring any suit or proceeding in an attempt to invalidate or claim any such intellectual property rights.

11. Neither Knox nor you will be liable to the other for any delay or failure to perform if that delay or failure results from a cause beyond its reasonable control.

12. Your exclusive remedies concerning our performance or nonperformance are those expressly stated in this Agreement. **Under no circumstances will Knox be liable for reimbursement costs, lost revenue or profits, loss of data, or for any other special, incidental or consequential damages, even if they were foreseeable or you have informed us of their potential.** And we will not be liable for any damages claimed by you based upon any third party claim. **Our total liability to you for your damages under this Agreement will not exceed the price you paid to us for the unit of Products at issue in your claim.** This limitation will apply regardless of the form of action (i.e., whether the lawsuit is in contract or in tort, including negligence.) **Because some states do not allow exclusion or limitation of liability for consequential or incidental damages, in such states Knox's entire liability is limited to the full extent permitted by law.**

13. You shall indemnify and save Knox harmless from all claims, losses, damages, expenses (including reasonable legal fees) and liability resulting from or in any way connected, directly or indirectly, with a breach of your obligations under this Agreement, third party claims, or with the possession, handling, sale or use of the Products or goods made from the Products delivered hereunder.

14. You will be invoiced and will pay all sales, use, excise, and other taxes on Products unless exempt under law or you furnish us with a valid resale or exemption certificate. The reporting and payment of all taxes for Products is your sole responsibility. You will also be responsible for all transportation costs, insurance charges, customs duties, and loss or damage settlements. Our prices for Products do not include such taxes or charges; where applicable, they will be added to your total invoice amount. You will not be responsible, however, for taxes levied against us based upon our net income or net worth (franchise taxes).

15. If for any reason we are unable to supply the total demand for Products specified herein, we may in our sole discretion distribute our available supply of Products among our customers, and we shall have no obligation to purchase supplies of the goods from third parties to enable us to perform our obligations to you under this Agreement.

16. This Agreement shall be governed by and construed in accordance with the laws of the State of Arizona without resort to conflict of laws rules. Each party irrevocably agrees that any action, suit or other legal proceeding against them shall be brought in a court of the State of Arizona or in the United States District Court for the State of Arizona. By execution and delivery of this Agreement, each party irrevocably submits to and accepts the jurisdiction of each of such courts and waives any objection (including any objection to venue, enforcement, or grounds of forum non conveniens) which might be asserted against the bringing of any such action, suit or other legal proceeding in such courts. In the event any proceedings are commenced to enforce or construe this invoice or the goods or services related thereto, then the prevailing party in such proceedings shall be entitled to its reasonable attorney fees thereby incurred. In the event a judgment is entered in such proceedings, it is agreed that said judgment shall provide that the prevailing party shall be entitled to recover all attorney fees reasonably incurred in enforcing said judgment.

17. This Agreement represents the entire agreement between us regarding this Order and Products we are to sell to you under it. The parties specifically disclaim the application of the United Nations Convention on Contracts for the International Sale of Goods. It also supersedes all previous oral or written communications between us regarding its subject matter, and it may not be modified or waived except in writing and signed by an officer or other authorized representative of each party. If any provision is held invalid, all other provisions shall remain valid, unless such invalidity would frustrate the purpose of our Agreement.

Contents

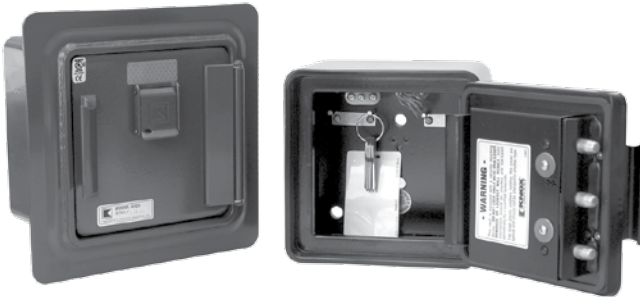
Knox-Box® 3200 Series – Page 4



Knox-Vault® 4100 Series – Page 5



Knox-Vault® 4400 Series – Page 5



Knox® Cabinets – Page 6



Knox® Elevator Box – Page 6



Knox® FDC Protection – Page 7



Knox® StorzGuard® Kits and Adapters – Page 7



Knox® Key Switches – Page 8



Knox® Padlocks – Page 8



Knox® Electrical Power Shutdown Station – Page 8



Knox® Part Numbers and Price List – Page 9-12

KNOX-BOX® key box products are rigorously tested by Underwriter's Laboratories and carry some or all of the following listings as indicated throughout this catalog.



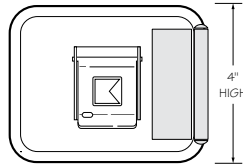
- UL 1037 Antitheft Alarms and Devices (entire unit)
- UL 437 Standard for Safety for Key Locks (keyway)
- UL 1610 Central Station Alarm Units (units with tamper switch)
- UL 1332 Organic Coatings for Steel Enclosures for Outdoor Use Electrical Equipment (powder coat)
- UL 508 Industrial Control Equipment (entire unit)



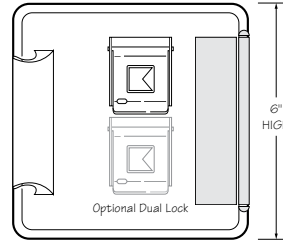
E-mail: info@knoxbox.com
www.knoxbox.com
 623-687-2300 • 800-552-5669
 Fax 623-687-2290

Knox® Rapid Entry System Product Catalog

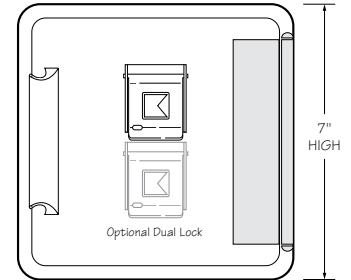
Choose the right-sized
KNOX-BOX® key vault.
Three sizes available
to meet a wide
variety of applications



Knox-Box®
3200 Series
Holds up to 10 Keys



Knox-Vault®
4100 Series
Holds up to 24 Keys



Knox-Vault®
4400 Series
Holds up to 50 Keys



UL® 1037 Listed

ALL KNOX® key box products are UL 1037 listed against physical attack as required by the 2012 IFC and NFPA 1

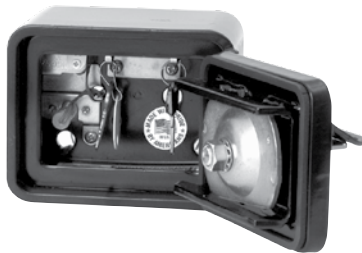
KNOX-BOX® 3200 Series w/ Hinged Door



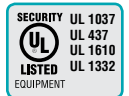
#3275 Recessed



#3266 Surface



KNOX-BOX® 3200 Series w/ Lift-Off Door - Heavy Duty



#3227 Recessed



#3208 Surface

Knox-Box® 3200 Series

- Heavy-duty, high security construction
- Allows single-handed operation
- Door attached with hinge, it's all one unit
- Ensures efficient emergency response
- Capacity for up to 10 keys and/or access cards
- 1/2" solid steel door
- Dimensions: Surface 4" H x 5" W x 3-3/4" D
Recessed 7" H x 7" W Flange
- **Ship Weight: 10 lbs.**
- Colors: Black, Aluminum, Dark Bronze
- Finish: Knox-Coat® Proprietary Coating System; UL1332 Outdoor Electrical Use

- Heavy-duty, high security construction
- Capacity for up to 10 keys and/or access cards
- 1/2" solid steel door
- Dimensions: Surface 5" H x 4" W x 3-3/4" D
Recessed 7" H x 7" W Flange
- **Ship Weight: 10 lbs.**
- Colors: Black, Aluminum, Dark Bronze
- Finish: Knox-Coat® Proprietary Coating System; UL1332 Outdoor Electrical Use

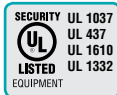
- Options:
- Alarm tamper switches
 - Multi-purpose electrical switch
 - Recessed Mounting Kit available for new masonry construction



Knox® Master Keys are provided to authorized agencies or other registered entities on an as-needed basis solely for use with the Knox Rapid Entry System. No other use of the Knox Master Keys or their associated codes is authorized or permitted. Knox Master Keys and Key Codes associated with the Knox Master Keys and Keyways remain the exclusive property of the Knox Company. Key Codes associated with the Knox Master Keys and Keyways are maintained by the Knox Company in Phoenix, Arizona. For questions regarding this policy, contact Knox at 800-552-5669.

Knox® Rapid Entry System Product Catalog

KNOX-VAULT® 4400 Series - Heavy Duty



#4444 Recessed



#4414 Surface

- Heavy-duty, high security construction
- 50 key capacity storage, for access cards, floor plans
- 5/8" solid steel door, re-locking mechanism with drill resistant hard-plate lock protector
- Dimensions: Surface 7" x 7" W x 5" D
Recessed 9-1/2" H x 9-1/2" W Flange
- **Ship weight: 29 lbs.**
- Colors: Black, Aluminum, Dark Bronze
- Finish: Knox-Coat® Proprietary Coating System; UL1332 Outdoor Electrical Use



Options:

- Single, dual or combination locks
- Alarm tamper switches
- Recessed Mounting Kit available for new masonry construction
- Multi-purpose electrical switch
- Push button switch for mag lock and door operation (low voltage)
- FDC Keywrench /Access card holder

Knox-Vault® 4400 Series

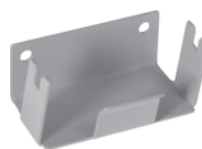
KNOX-BOX® Accessories Available for the 4100 Series and 4400 Series



Multi-purpose Electrical Switch
28 Volts AC/DC 5a Max.
(Also available for 3200 Series)



Push-Button Momentary Switch
24 Volts AC/DC 0.25a Max.

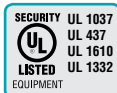


FDC Keywrench/ Access Card Holder



FDC Keywrench/ Access Card Holder
Shown in use

KNOX-VAULT® 4100 Series - Heavy Duty



#4114 Recessed



#4114 Surface

Shown with 4100 Series accessories installed

For those applications where a 3200 Series is too small yet the 4400 Series is too large. The 4100 is available with an optional Knox Keywrench holder allowing departments to keep a Knox FDC Keywrench on site.

- Heavy-duty, high security construction
- 24 key capacity storage, for access cards, floor plans
- 1/2" solid steel door, re-locking mechanism with drill resistant hard-plate lock protector
- Dimensions: Surface 6"H x 6"W x 4-1/2"D
Recessed 8-1/2"H x 8-1/2" W Flange
- **Ship weight: 21 lbs.**
- Colors: Black, Aluminum, Dark Bronze
- Finish: Knox-Coat® Proprietary Coating System; UL1332 Outdoor Electrical Use

Options:

- Single or dual lock
- Alarm tamper switches
- Recessed Mounting Kit available for new masonry construction
- Multi-purpose electrical switch
- Push button switch for mag lock and door operation (low voltage)
- FDC Keywrench /Access card holder

Knox-Vault® 4100 Series

Knox® Rapid Entry System Product Catalog

Elevator/Lobby Key Box

Knox® Elevator/Lobby Key Box



1400/1450 Series – UL listed high security box designed specifically for the elevator lobby.

The **Standard** elevator box can store up to (2) elevator door “drop keys” plus additional keys to meet latest IFC and NFPA 1 standards.

The **Mini** elevator box is for standard key storage only and offers a lower profile than the standard KNOX-BOX, making it a more attractive choice for lobby or elevator corridor use when needed.

The Knox Elevator/Lobby Key Box can be keyed to an existing Knox System.

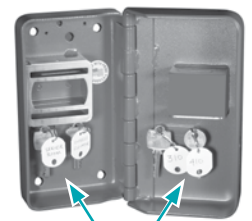
- Standard Dimensions: 10-1/2"H x 7-1/2"W x 2"D
- Mini Dimensions: 8-1/2"H x 5"W x 2"D
- **Ship Weight: Standard = 14 lbs; Mini = 9 lbs**
- Material: 10 gauge steel housing; 10 gauge steel door
- Colors: Deep Red, Dark Bronze, Aluminum or Black
 - Deep Red with “Fire Dept. Use Only” banner required
 - Dark Bronze and Aluminum with optional banner
 - Black available without banner only
- Finish: Knox-Coat® Weather resistant proprietary coating system
- Options - Alarm tamper switch
 - Standard Elevator Box only:**
 - Right-side, 13 key-hook expansion panel
 - Left-side key panel available with 13 key-hooks if no elevator drop key storage is needed, call for part numbers



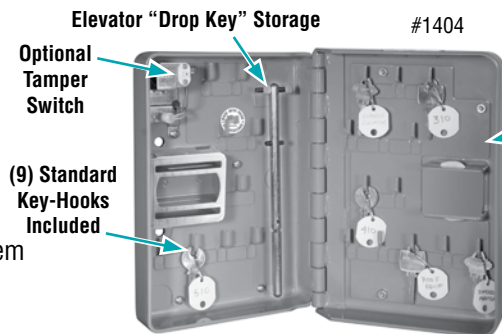
Standard Elevator Box
1400 Series

Mini Elevator Box
1450 Series

Mini holds 8 standard keys ONLY, no elevator “drop keys”



(4) Key-Hooks



Elevator “Drop Key” Storage

#1404

Optional Tamper Switch

(9) Standard Key-Hooks Included

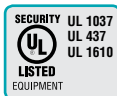
#1449
Right-side, 13 key-hook Expansion Panel available for additional storage.

UL 1037 listed as required by the 2012 IFC and NFPA 1



Knox® Cabinet

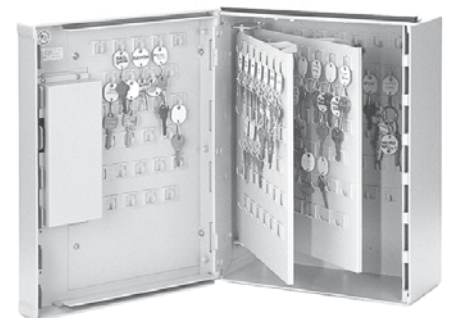
Knox® Cabinet



- **1300 Series** – UL listed high security armored cabinet
- Stores up to 231 keys, blueprints, floor plans, MSDS, Haz-Mat information and other entry items
- Available in 5" or 7" depths
- Dimensions: 18" H x 14-1/2" W x 5" or 7" D
- **Ship Weight: 67 lbs.**
- Color: Light grey
Finish: Knox-Coat® Weather resistant proprietary coating system



#1307 Dual Lock



#1308 w/ Optional Back Panel and Swing Panels.



#1100

Not suitable for key storage.

- **1100 Series** - Document storage cabinet
- Stores blueprints, floor plans, MSDS, Haz-Mat information and other items (Not suitable for key storage)
- Dimensions: 14" H x 14" W x 4-1/4" D
- **Ship Weight: 26 lbs.**
- Color: Light grey
Finish: Knox-Coat® Weather resistant proprietary coating system



#1201 Weather Housing/Rain Shield with #1301 Cabinet Inside.
Has latch without lock.
Door folds down as work surface.

- **1201** Weather housing/Rain shield
- Protect Knox cabinet from weather
- Weather housing has latch without lock
- Dimensions: 21" H x 20" W x 13-5/8" D
- **Ship Weight: 75 lbs.**
- Color: Light grey
Finish: Knox-Coat® Proprietary Coating System; UL1332 Outdoor Use

Knox® Rapid Entry System Product Catalog

Knox® FDC Plug

- Solid Stainless Steel Construction
- Protect sprinkler system against vandalism
- Prevent frequent cap replacement
- Optional **Swivel-Guard™** protects against brass theft
- Available in 1-1/2" or 2-1/2" sizes
- Finish: Bright Stainless Steel (2-1/2" Plug also available with Bright Chrome-like stainless finish)
- **Ship Weight:** 1-1/2" = 2 lbs.; 2-1/2" = 4 lbs.



1-1/2 inch



#3050

2-1/2 inch
With **Swivel-Guard™**



#3041

2-1/2 inch
Bright Chrome-like finish



#3042

Knox® SecureCap® Locking Standpipe/Hydrant Cap

- Locking, watertight cap
- Protect discharge side of standpipes and wall hydrants
- Stainless Steel exterior with brass connection threads
- 2-1/2" size
- Finish: Stainless Steel
- **Ship Weight: 8 lbs.**



#4043

Outer housing spins freely when locked.



Knox® StorzGuard®

- Secure large diameter connections
- Prevent unauthorized access
- Watertight
- Available in 4" or 5" sizes
- Finish: Dark, Hard Anodized Aluminum
- **Ship Weight:** 4" = 6 lbs.; 5" = 9 lbs.



4 inch
#5001

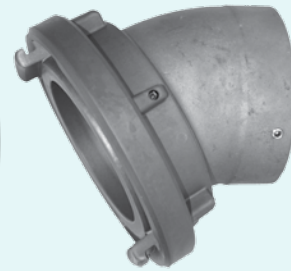
5 inch
#5002

StorzGuard® Adapters – U.S. MADE

Knox StorzGuard Adapters
Available in Straight and 30° Elbow
See Price List for Adapters and Kits



Straight



30° Elbow

- Ready to Install
- Meets DIN Standard
- Meets NFPA Standard
- Forged Clamp Fittings
- Straight or 30° Elbow

Sizes Available

4" pipe fitting to 4" Storz
4" pipe fitting to 5" Storz
6" pipe fitting to 5" Storz
4-1/2" NH to 5" Storz

Knox® Rapid Entry System Product Catalog

Power Shutdown



#4506



Features:

- Allen-Bradley Type 4/13 Watertight Selector Switch
- NEMA Type 2, 3R electrical enclosure
- Lock Out/Tag Out Posts

Now Available – Knox® Remote Electrical Power Shutdown Station

The **4500 Series** Remote Shutdown Station houses an electrical service disconnect switch that can be used by first responders during an emergency. The shutdown switch is designed to remotely operate the building's shunt trip switch which will disconnect all electrical power to the building. It can also be used to disconnect power to HVAC controls, industrial equipment lockout or photovoltaic/solar powered systems.

- Dimensions: Surface: 7"H x 7"W x 7-1/4"D
Recessed: 9-1/2"H x 9-1/2"W Flange
- Electrical Ratings: Main Switch: 24-480VAC, 125VA MAX, PILOT DUTY, PER CONTACT BLOCK
Tamper Switch: 24VDC, 50mA, general use
Enclosure Rating: Type 2, 3R
- **Ship Weight: 35 lbs.**
- Material: 1/4" steel housing, 5/8" thick steel door
- Color: Red, Black, Aluminum, Dark Bronze
- Finish: Knox-Coat® Proprietary Coating System; UL1332 Outdoor Electrical Use



Options:

- Available in Surface and Recessed configurations
- Alarm tamper switches
- Single or dual locks



Can also be used as a remote solar/wind electrical power shutdown station.

Key Switches



#3503

#3501



#3502



- Electric override for perimeter gates, parking garages and gated communities
- For fire, EMS & law enforcement
- Single or dual-key options
- All stainless steel dust cover
- **Ship Weight: 1 lb.**

Padlocks

Knox® Padlocks

Agency I.D. Label Included



Lock Core
UL437

Exterior - All Weather Conditions

- Secures perimeter and fire access gates, and other fire department equipment
- Heavy duty brass body, stainless steel 7/16" diameter shackle
- Protective EPDM boot with shackle seal
- Metal keyway cover



#3770

Shrouded - All Weather Conditions

- Shrouded shackle resists pry and cut attacks for added security
- Heavy duty brass body, stainless steel 7/16" diameter shackle
- Protective LDPE boot
- LDPE keyway cover



#3772

Ship Weight: 2 lbs.

Interior - Light Duty

- Brass body and hardened steel 5/16" diameter shackle



#3771

WARNING: Before ordering, measure hasp fittings to ensure proper shackle size.

Prices in U.S. Dollars.
Prices and availability
subject to change.

● Included
– Not Included

Knox-Box® 3200 Series


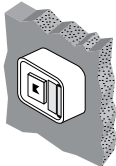
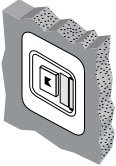
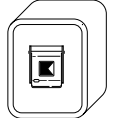

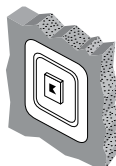
Holds up to 10 Keys
Ship Weight = 10 lbs.



#3275 Recessed

#3266 Surface



Door Type	Mount Type	Tamper Switch	Color	Part Number	Price	
Hinged 	Surface Mount 	–	Black	3261	\$255.00	
		●	Black	3262	\$295.00	
		–	Aluminum	3263	\$265.00	
		●	Aluminum	3264	\$305.00	
		–	Dark Bronze	3265	\$265.00	
		●	Dark Bronze	3266	\$305.00	
	Recess Mount 	–	Black	3270	\$295.00	
		●	Black	3271	\$335.00	
		–	Aluminum	3272	\$305.00	
		●	Aluminum	3273	\$345.00	
		–	Dark Bronze	3274	\$305.00	
		●	Dark Bronze	3275	\$345.00	
	Optional Multi-purpose electrical switch				3291	\$21.00
	3200 Hinged Door Recessed Mounting Kit				3290	\$79.00
	Lift-Off 	Surface Mount 	–	Black	3201	\$215.00
			●	Black	3202	\$255.00
			–	Aluminum	3205	\$225.00
●			Aluminum	3206	\$265.00	
–			Dark Bronze	3207	\$225.00	
●			Dark Bronze	3208	\$265.00	
Recess Mount 		–	Black	3220	\$255.00	
		●	Black	3221	\$295.00	
		–	Aluminum	3224	\$265.00	
		●	Aluminum	3225	\$305.00	
		–	Dark Bronze	3226	\$265.00	
		●	Dark Bronze	3227	\$305.00	
Optional Multi-purpose electrical switch				3241	\$21.00	
3200 Lift-off Door Recessed Mounting Kit				3240	\$79.00	

Knox-Vault® 4400 Series


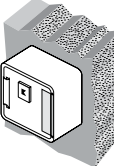
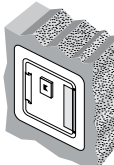

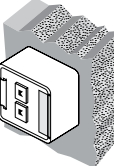

Holds up to 50 Keys
Ship Weight = 29 lbs.



#4444 Recessed

#4414 Surface



Lock Type	Mount Type	Tamper Switch	Color	Part Number	Price	
Single Lock 	Surface Mount 	–	Black	4401	\$378.00	
		●	Black	4402	\$418.00	
		–	Aluminum	4409	\$388.00	
		●	Aluminum	4410	\$428.00	
		–	Dark Bronze	4413	\$388.00	
		●	Dark Bronze	4414	\$428.00	
	Recess Mount 	–	Black	4430	\$428.00	
		●	Black	4431	\$468.00	
		–	Aluminum	4439	\$438.00	
		●	Aluminum	4440	\$478.00	
		–	Dark Bronze	4443	\$438.00	
		●	Dark Bronze	4444	\$478.00	
		4400 Recessed Mounting Kit			4470	\$95.00
		Dual Lock 	Surface Mount 	–	Black	4403
●	Black			4404	\$478.00	
–	Aluminum			4411	\$448.00	
●	Aluminum			4412	\$488.00	
–	Dark Bronze			4415	\$448.00	
●	Dark Bronze			4416	\$488.00	
Recess Mount 	–		Black	4432	\$488.00	
	●		Black	4433	\$528.00	
	–		Aluminum	4441	\$498.00	
	●		Aluminum	4442	\$538.00	
	–		Dark Bronze	4445	\$498.00	
	●		Dark Bronze	4446	\$538.00	
	4400 Recessed Mounting Kit			4470	\$95.00	
	4400 Accessories		Optional Multi-purpose electrical switch			4471
Keywrench/card holder			4472	\$11.00		
Push Button Switch			4473	\$9.00		

Prices in U.S. Dollars.
Prices and availability
subject to change.

● Included
- Not Included

Knox-Vault® 4100 Series


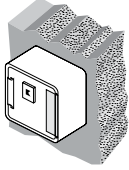
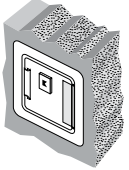


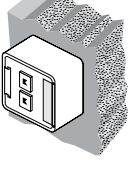
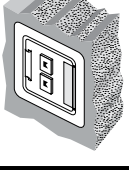
Holds up to 24 Keys
Ship Weight = 21 lbs.

#4114 Surface

#4144
Recessed



Shown with 4100 Series
accessories installed

Lock Type	Mount Type	Tamper Switch	Color	Part Number	Price	
Single Lock 	Surface Mount 	-	Black	4101	\$353.00	
		●	Black	4102	\$393.00	
		-	Aluminum	4109	\$363.00	
		●	Aluminum	4110	\$403.00	
		-	Dark Bronze	4113	\$363.00	
		●	Dark Bronze	4114	\$403.00	
	Recess Mount 	-	Black	4130	\$403.00	
		●	Black	4131	\$443.00	
		-	Aluminum	4139	\$413.00	
		●	Aluminum	4140	\$453.00	
		-	Dark Bronze	4143	\$413.00	
		●	Dark Bronze	4144	\$453.00	
	4100 Recessed Mounting Kit				4170	\$90.00
	Dual Lock  	Surface Mount 	-	Black	4103	\$413.00
●			Black	4104	\$453.00	
-			Aluminum	4111	\$423.00	
●			Aluminum	4112	\$463.00	
-			Dark Bronze	4115	\$423.00	
●			Dark Bronze	4116	\$463.00	
Recess Mount 		-	Black	4132	\$463.00	
		●	Black	4133	\$503.00	
		-	Aluminum	4141	\$473.00	
		●	Aluminum	4142	\$513.00	
		-	Dark Bronze	4145	\$473.00	
		●	Dark Bronze	4146	\$513.00	
4100 Recessed Mounting Kit				4170	\$90.00	
4100 Accessories		Optional Multi-purpose electrical switch			4171	\$21.00
	Keywrench/card holder			4172	\$11.00	
	Push Button Switch			4173	\$9.00	

Knox® Cabinet 1300 Series




#1308 w/ Optional Back Panel and Swing Panels.

Holds up to 231 Keys
with optional swing panels,
see page 6.

Ship Weight = 67 lbs.



#1307 Dual Lock

Lock Type	Depth	Tamper Switch	Color	Part Number	Price
Single Lock 	5 inch	-	Lt. Grey	1301	\$627.00
		●	Lt. Grey	1303	\$667.00
	7 inch	-	Lt. Grey	1302	\$667.00
		●	Lt. Grey	1304	\$707.00
Dual Lock  	5 inch	-	Lt. Grey	1305	\$687.00
		●	Lt. Grey	1307	\$727.00
	7 inch	-	Lt. Grey	1306	\$727.00
		●	Lt. Grey	1308	\$767.00

1300 Cabinet Options

Back Key Hook Panel - 48 Keys	1351	\$75.00
Swing Key Hook Panel & Mounting Assembly - 78 Keys	1352	\$154.00
2nd Swing Key Hook Panel for 7" Deep Model Only (must already have mounting assembly)	1353	\$121.00
Non Locking Weather Housing/Rain Shield (for exterior cabinet protection) Ship Weight = 75 lbs.	1201	\$385.00
1300 - 5 inch Cabinet with Jail Key Hooks	1360	\$627.00

1100 Series

Part	Color	Part Number	Price
Data Storage Cabinet (Not for key storage) Ship Weight = 26 lbs.	Lt. Grey	1100	\$298.00

Accessories

Part	Part Number	Price
Fire Dept. Red Reflective Alert Decal	1001	\$2.00
Pre-Fire Plan Reflective Decal (8" x 8")	1005	\$12.00
Key Tags (Package of 10)	1006	\$3.00
One Inch Key Rings (Package of 10)	1007	\$4.00
Tamper Seals (Package of 50)	1008	\$10.00
Tamper Evident Bags (Package of 10)	1009	\$3.00

Knox® Elevator/Lobby Box

Ship Weight: Standard = 14 lbs.; Mini = 9 lbs.



Standard Elevator Box
1400 Series

Mini Elevator Box
1450 Series

#1404 with #1449 Expansion Panel

Standard color is Deep Red with "Fire Dept. Use Only" banner to meet latest IFC and NFPA 1 standards. Black also available, call.

1400 Series Knox Standard Elevator/Lobby Box

Part	Tamper Switch	Color	Part Number	Price
Standard Elevator Box	–	Deep Red	1403	\$295.00
Standard Elevator Box	●	Deep Red	1404	\$335.00
Standard Elevator Box	–	Aluminum	1433 / 1409*	\$295.00
Standard Elevator Box	●	Aluminum	1434 / 1410*	\$335.00
Standard Elevator Box	–	Dark Bronze	1437 / 1413*	\$295.00
Standard Elevator Box	●	Dark Bronze	1438 / 1414*	\$335.00
13 Hook Expansion Panel		Red/Alum/Brz	1449	\$40.00

13 Hook Alternate Left Panel

No charge if ordered initially.
Call for details and part numbers.

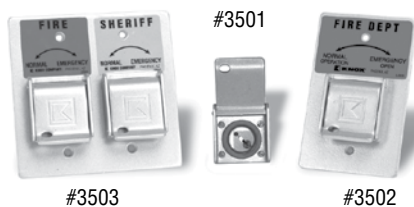
1450 Series Knox Mini Elevator/Lobby Box

Mini Elevator Box	–	Deep Red	1453	\$274.00
Mini Elevator Box	●	Deep Red	1454	\$314.00
Mini Elevator Box	–	Aluminum	1457 / 1455*	\$274.00
Mini Elevator Box	●	Aluminum	1458 / 1456*	\$314.00
Mini Elevator Box	–	Dark Bronze	1461 / 1459*	\$274.00
Mini Elevator Box	●	Dark Bronze	1462 / 1460*	\$314.00

*Part number for box without "Fire Dept. Use Only" banner on door.

Knox® Key Switch

Ship Weight = 1 lb.



Part (includes all stainless steel dust cover)	Part Number	Price
Key Switch	3501	\$73.00
Key Switch on Mounting Plate	3502	\$91.00
Double Key Switch on Mounting Plate	3503	\$145.00

Knox® Remote Electrical Power Shutdown Station

4500 Series

Ship Weight = 35 lbs.



#4506

Lock Type	Mount Type	Tamper Switch	Color/Part Number		Price
Single Lock	Surface Mount	–	Red/ 4505	Black/ 4501	\$694.00
		●	Red/ 4506	Black/ 4502	\$734.00
		–	Aluminum/ 4509	Dk. Bronze/ 4513	\$704.00
		●	Aluminum/ 4510	Dk. Bronze/ 4514	\$744.00
	Recess Mount	–	Red/ 4534	Black/ 4530	\$744.00
		●	Red/ 4535	Black/ 4531	\$784.00
		–	Aluminum/ 4539	Dk. Bronze/ 4543	\$754.00
		●	Aluminum/ 4540	Dk. Bronze/ 4544	\$794.00
Dual Lock	Surface Mount	–	Red/ 4507	Black/ 4503	\$754.00
		●	Red/ 4508	Black/ 4504	\$794.00
		–	Aluminum/ 4511	Dk. Bronze/ 4515	\$764.00
		●	Aluminum/ 4512	Dk. Bronze/ 4516	\$804.00
	Recess Mount	–	Red/ 4536	Black/ 4532	\$804.00
		●	Red/ 4537	Black/ 4533	\$844.00
		–	Aluminum/ 4541	Dk. Bronze/ 4545	\$814.00
		●	Aluminum/ 4542	Dk. Bronze/ 4546	\$854.00

Knox® Padlock

Ship Weight = 2 lbs.



#3772

#3770

#3771

Part	Part Number	Price
Shrouded - All Weather Conditions 7/16" diameter stainless steel shackle, 3/4" H shackle clearance	3772	\$99.00
Exterior - All Weather Conditions 7/16" diameter stainless steel shackle, 1-13/16" H shackle clearance	3770	\$85.00
Interior - Light Duty 5/16" diameter hardened steel shackle, 2-3/8" H shackle clearance	3771	\$62.00

Knox® 2.5" Locking FDC Plug

Ship Weight = 4 lbs.



Part	Part Number	Price
2-1/2" Male Plug with <i>Swivel-Guard™</i> , All Stainless Steel with Bright Stainless Finish	3041	\$161.00
2-1/2" Male Plug with <i>Swivel-Guard™</i> , All Stainless Steel with Polished, Chrome-like Finish	3040	\$171.00
2-1/2" Male Plug All Stainless Steel with Bright Stainless Finish	3043	\$122.00
2-1/2" Male Plug All Stainless Steel with Polished, Chrome-like Finish	3042	\$132.00

Knox® SecureCap® Locking Standpipe/ Hydrant Cap

Ship Weight = 8 lbs.



Part	Part Number	Price
2-1/2" Female Cap, Stainless Steel exterior with solid brass threads	4043	\$192.00

Knox® 1.5" Locking FDC Plug

Ship Weight = 2 lbs.



Part	Part Number	Price
1-1/2" NH Male Plug Bright Stainless Finish	3050	\$94.00



623-687-2300 • 800-552-5669
Fax 623-687-2290

E-mail: info@knoxbox.com • Web: www.knoxbox.com
1601 W. Deer Valley Road • Phoenix, Arizona 85027

Knox® StorzGuard® Caps

Ship Weight = 4" = 6 lbs. 5" = 9 lbs.



Part	Part Number	Price
4" StorzGuard® – Dark, Hard Anodized Aluminum	5001	\$225.00
5" StorzGuard® – Dark, Hard Anodized Aluminum	5002	\$245.00

Knox® StorzGuard® Kits with Cap

Includes StorzGuard Cap and Adapter Ship Weight = 16 lbs.

Adapter Type	Adapter Size	Face Type	Part Number	Price
	4" Storz X 4" NPT Female Rigid	Gasket	5022	\$431.00
		Metal Face	5023	\$431.00
	5" Storz X 4" NPT Female Rigid	Gasket	5042	\$489.00
		Metal Face	5043	\$489.00
	5" Storz X 6" NPT Female Rigid	Gasket	5046	\$540.00
		Metal Face	5047	\$540.00
	4" Storz X 4" NPT Female Rigid	Gasket	5020	\$339.00
		Metal Face	5021	\$339.00
	5" Storz X 4" NPT Female Rigid	Gasket	5040	\$411.00
		Metal Face	5041	\$411.00
	5" Storz X 6" NPT Female Rigid	Gasket	5044	\$482.00
		Metal Face	5045	\$482.00
Hydrant Steamer Kit – 5" Storz to 4.5" NH Metal Face			5049	\$437.00

Knox® StorzGuard® Adapters Only

Ship Weight = 8 lbs.

Adapter Type	Adapter Size	Face Type	Part Number	Price
	4" Storz X 4" NPT Female Rigid	Gasket	5062	\$206.00
		Metal Face	5063	\$206.00
	5" Storz X 4" NPT Female Rigid	Gasket	5082	\$244.00
		Metal Face	5083	\$244.00
	5" Storz X 6" NPT Female Rigid	Gasket	5086	\$295.00
		Metal Face	5087	\$295.00
	4" Storz X 4" NPT Female Rigid	Gasket	5060	\$114.00
		Metal Face	5061	\$114.00
	5" Storz X 4" NPT Female Rigid	Gasket	5080	\$166.00
		Metal Face	5081	\$166.00
	5" Storz X 6" NPT Female Rigid	Gasket	5084	\$237.00
		Metal Face	5085	\$237.00
Hydrant Steamer Adapter – 5" Storz to 4.5" NH Metal Face			5089	\$192.00