

New York Times Bestseller

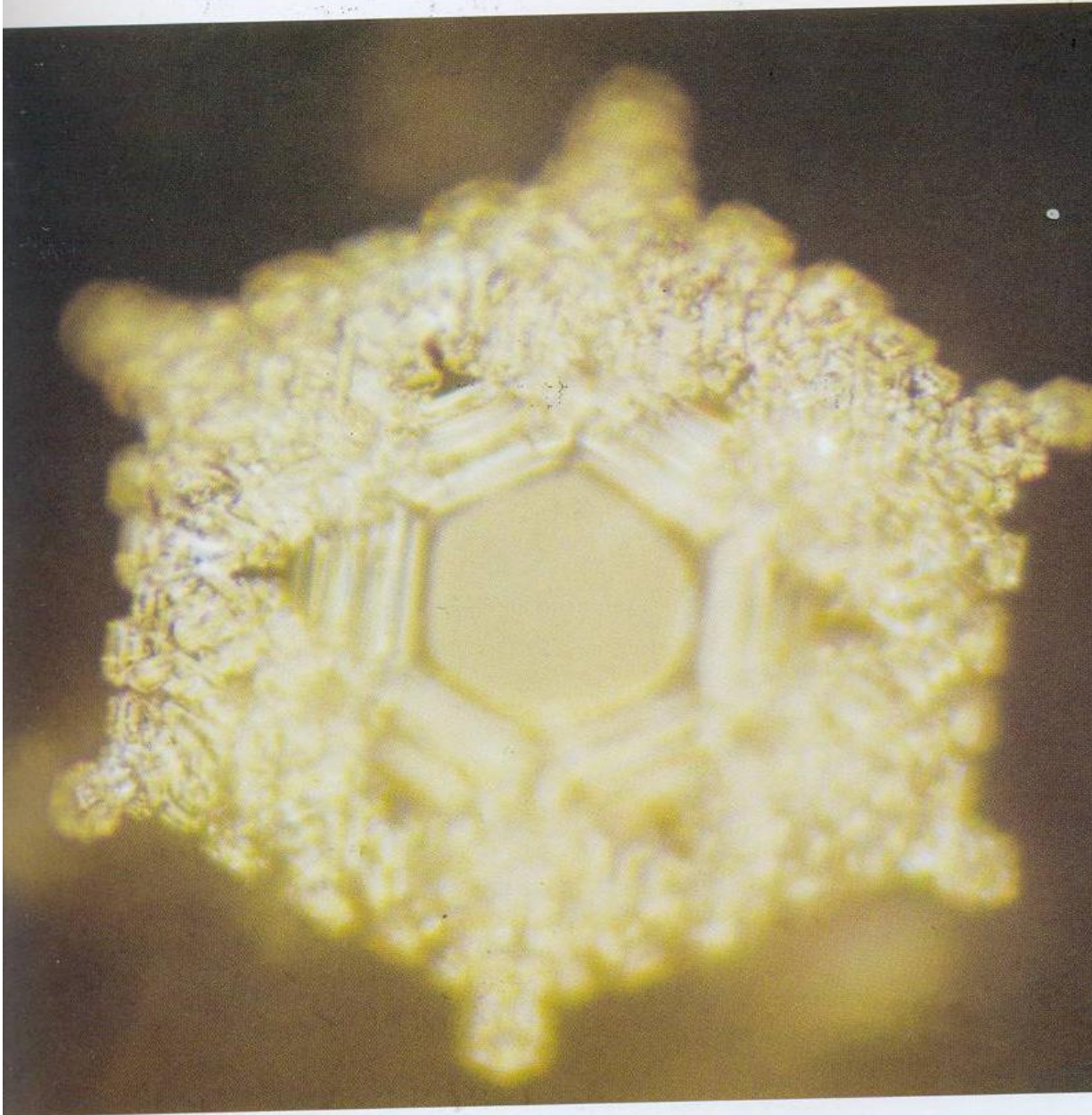
The Hidden Messages in Water

Masaru Emoto

AS YOU CAN SEE THIS BOOK IS ON THE BEST SELLERS LIST. ITS PICTURES ARE FACTUAL – IRREFUTABLE. SOME OF THE WRITTEN TEXT NEEDS SOME HELP, THOU.

We showed words to water

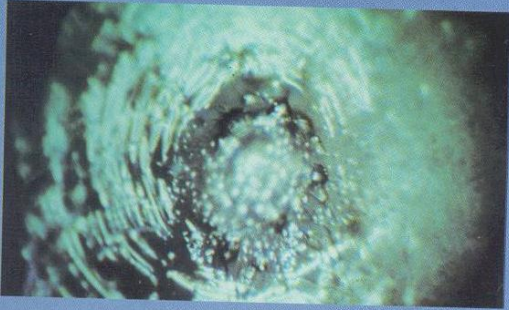
We wrapped a piece of paper with words typed on it around a bottle of water.



Love and gratitude

This crystal is as perfect as can be. This indicates that love and gratitude are fundamental to the phenomenon of life in all of nature.

THIS ALSO EXTENDS TO THE FEELINGS AND WORDS YOU USE – IT ALTERS YOUR BODY’S WATER – FULL STOP:



You fool! (Japanese)

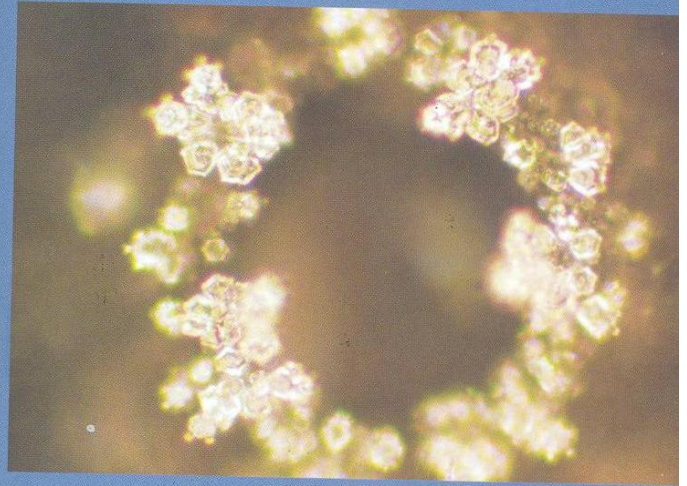


You fool! (English)

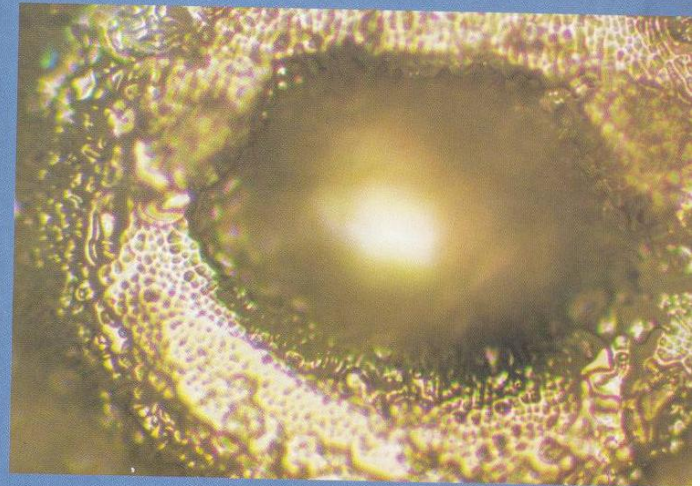


You make me sick. I will kill you. (Japanese)

When words that indicated harm to humans were shown to the water, no crystals formed. It even appears that the words "You make me sick" created the shape of a man with a gun.



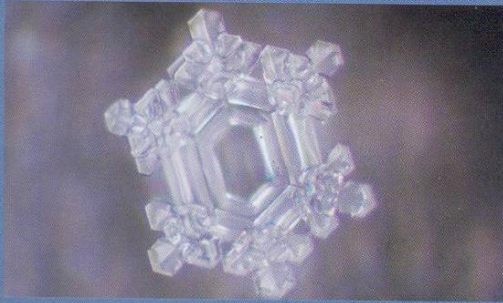
Angel (Japanese)



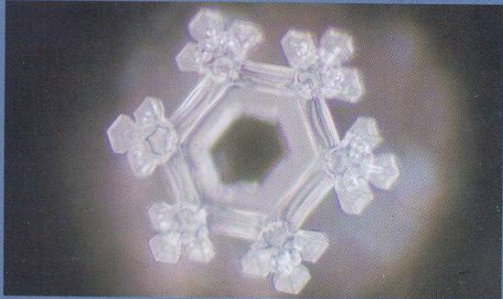
Satan (Japanese)

The word "angel" resulted in a ring of small crystals linked together, while the word "Satan" formed a crystal with a dark lump in the center as if ready to attack.

SEE



Wisdom (Japanese)



Wisdom (English)



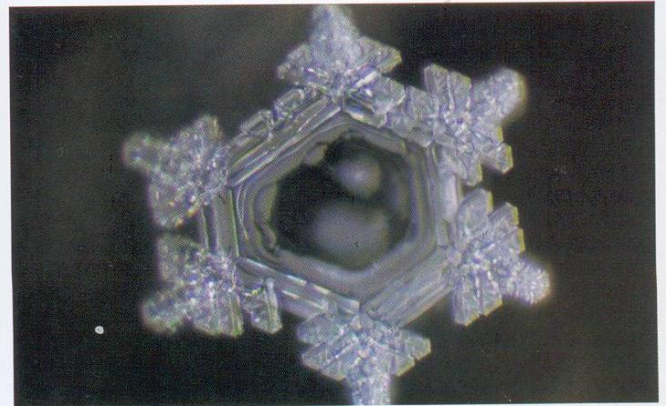
Weisheit (German)

The word "wisdom" in various languages created beautifully formed crystals. This may indicate that wisdom is a basic principle of nature throughout the world.

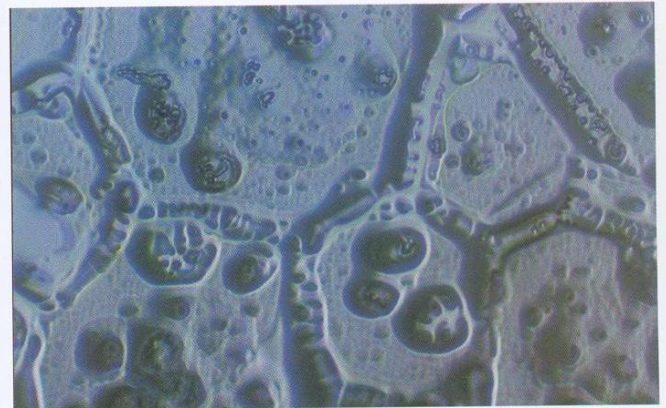
12

A test conducted at an elementary school

Here are some photographs taken after children at a Japanese elementary school spoke to the water, and also one photograph of water that was ignored.



You're cute



You fool

The children said different things to different bottles of water. When the children said "You're cute" to the water, cute crystals formed, but "You fool" had the opposite effect.

13

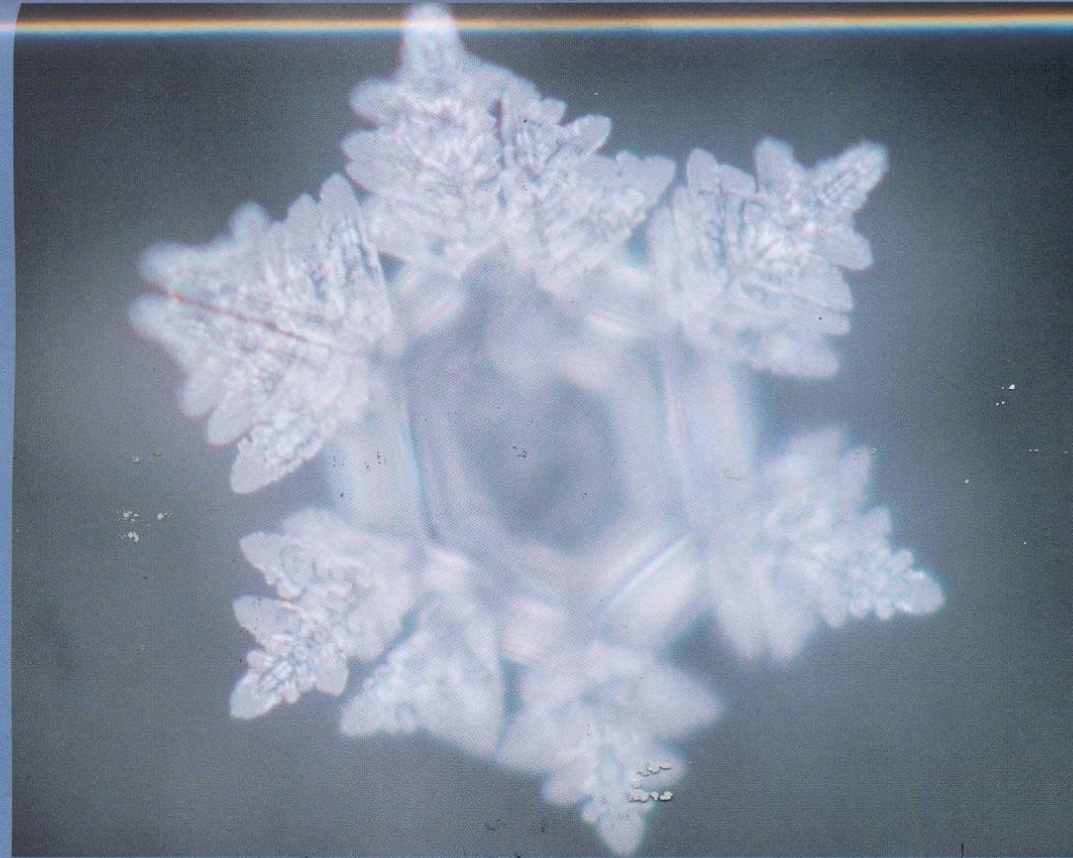
FURTHER:

THIS IS MY OPPORTUNITY TO APPLY SOME COWBOY LEAD PIPE LOGIC. THESE PICTURES DO NOT LIE.

LEAD PIPE LOGIC – THE MEANING AND UNDERSTANDING OF THIS PHRASE IS THIS – IF YOU GET SMASHED IN THE HEAD WITH A LEAD PIPE – DOES IT HURT?

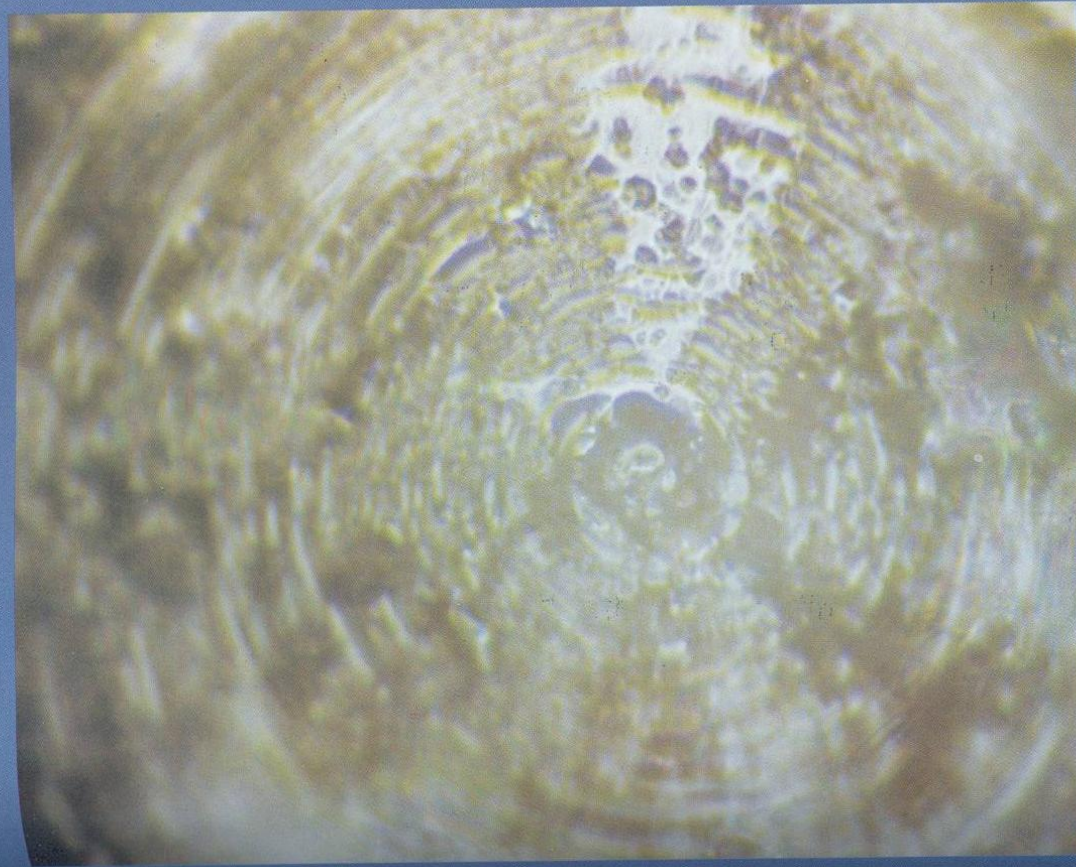
I MEAN, MOST PEOPLE HAVE TO BE SMACKED IN THE HEAD WITH SOMETHING BEFORE THEY WILL SEE DAY LIGHT.!!!

SO, THIS ESSAY WILL NOT BE MAMBY PAMY – THE LEAD PIPE LOGIC WILL BE JUST THAT – CUT AND DRIED – IRREFUTABLE.



Bud Powell: *Cleopatra's Dream*

Modern jazz from the 1950s created this beautiful crystal, indicative of the healing qualities of this music, created during a period of turmoil.



Heavy-metal music

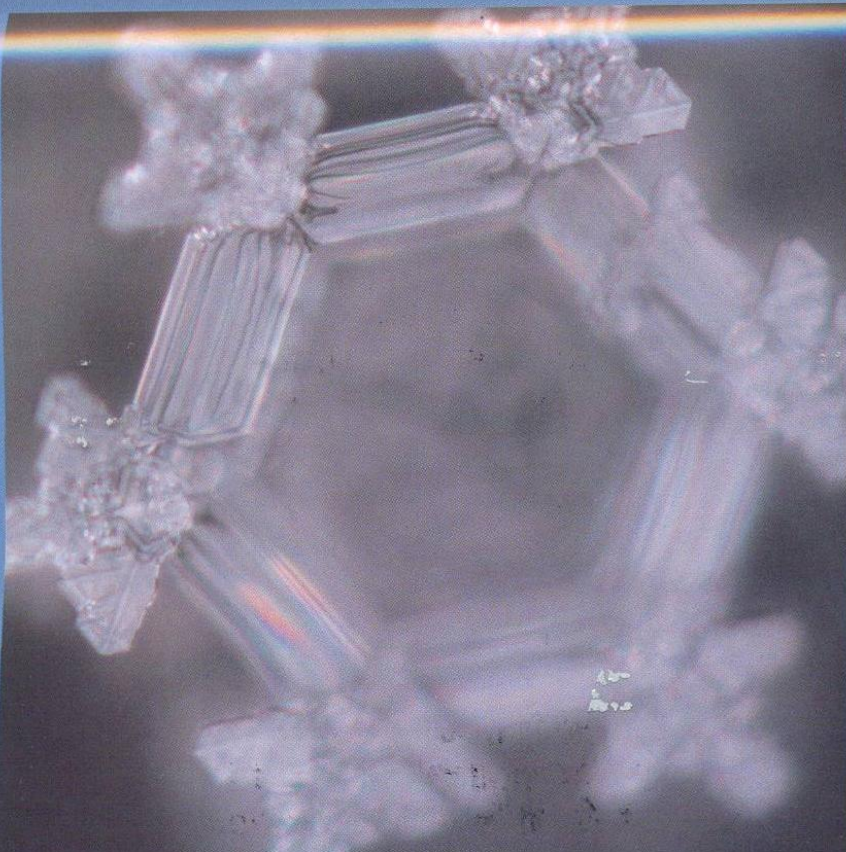
This is the result of loud music full of angry and vulgar lyrics. The result is similar to that created by "You fool!" indicating that water responds more to words than to music.

**BASICALLY MANMADE STUFF IS UNORGANIZED – UNLESS IT IS DONE WITH REAL LOVE
YOU CAN NOT FOOL THE WATER. WHEREAS NATURAL STUFF AUTOMATICALLY IS WONDERFULLY
ORGANIZED AND TRUTHFULLY HEALING – THUS, THE ROOT NATURE OF NATURE IS LOVE.**



Rocky Mountains

The tips of the Rocky Mountains, the backbone of North America, are covered in glaciers. The crystal also looks like it is encased in snow.



Mt. Fuji

The symbolic mountain of Japan. Perhaps incidentally, the crystal looks as though it were being enveloped by the first rays of morning.

OK – NOW WE BEGIN WITH THE LOGIC – SOMETHING SCIENCE DOES NOT LIKE – IRREFUTABLE CONCLUSIONS.

THE FACT THAT THESE CRYSTALS FORM IN THE FROZEN WATER DROPLETS CAN BE DIVIDED AS FOLLOWS:

BLACK | WHITE

IN MY PARLANCE
3D | 2D

ACCORDING TO THE HINDU
SHIVA | VISHNU
THE DESTROYER OF FORM & EGO | THE PRESERVER OF FORM & LIFE

THE AUTHOR, DR. EMOTO, SPLIT THE EMOTIONS THIS WAY:

“
HATE | GRATITUDE
ANGER | KINDNESS
FEAR | COURAGE
ANXIETY | PEACE OF MIND
PRESSURE | PRESENCE OF MIND
“

ONE WAY IS WITHOUT FORM | THE OTHER FORMS BEAUTY

THIS IS ABSOLUTE – WITHOUT QUESTION – THESE PICTURES PROVE THAT

SO, WE CONCLUDE: THAT CONSCIOUSNESS AFFECTS MATTER – ACTUALLY FORMS MATTER. THE TWO DIMENSIONAL ENERGY **CONTROLS** THE 3D ENERGY. THESE PICTURES (NOT THEORIES) ARE JUST ANOTHER NAIL IN THAT COFFIN.

SO, FIRST CONSCIOSNESS - THEN, MATTER (IF YOU CAN CALL IT THAT)

A FACT: PROPORTIONALLY THERE IS MORE SPACE IN THE ATOMS OF YOUR HAND THAN THERE IS IN THIS SOLAR SYSTEM – THE ELECTRONS, PROTONS & NEUTRONS OCCUPY **LESS THAN** 1/1000th OF ONE PERCENT OF THE SPACE IN THE ATOMS – THE REST IS SPACE. MATTER DOES NOT REALLY EXIST – AS THE HINDUS HAVE BEEN SAYING FOR THOUSANDS OF YEARS – IT IS THE “MAYA” AN ILLUSION.

FIRST GOD - THEN CREATION - AND THIS OCCURS EVERY MICRO-INSTANT

MATTER MOVES IN A JITTERBUG MOTION (THAT IS A FACT – NOT A THOERY) – THEREFORE, MATTER IS BEING CREATED OR RE-CREATED EVERY MICRO-INSTANT.

WE ARE TALKING ABOUT ALL THE MATTER IN THIS KNOWN UNIVERSE – IT IS ALL BEING RE-CREATED EVERY MICRO-INSTANT BY THE MASTER CREATOR – THERE IS NOBODY ELSE THAT CAN DO IT.

THUS, GOD IS PRESENT IN YOUR LIFE – IN ALL THINGS – IN ABSOLUTELY EVERYTHING – ALL THE TIME – ALWAYS HAS BEEN AND ALWAYS WILL BE

THIS IS ALL THAT NEEDS TO BE SAID – **GOD CONTROLS EVERYTING** – BUT, BECAUSE I AM A PHYSICST A MAJOR QUESTION HAS TO BE ANSWERED: **HOW?**

HOW DOES GOD MANIFEST THESE THINGS EVERY MICRO-INSTANT THROUGHOUT THE ENTIRE UNIVERSE SIMULTANEOUSLY???

I MEAN **WOW !!!**

EVERYTHING OUT THERE AND IN HERE IS CREATED AND/OR RE-CREATED EVERY MULTI-TRILLIONTH OF A SECOND – ALL AT THE SAME TIME / SIMULTANEOUSLY – BY ONE ENTITY – GOD.

THE ABOVE MENTIONED FACTS AND THESE PICTURES OF WATER PROVE THAT BEYOND ANY SHADOW OF A DOUBT. THE PICTURES DON'T LIE – THE ABOVE FACTS AND THE CONCLUSION ARE IRREFUTABLE. GOD CONTROLS EVERYTHING. FULL STOP – END OF STORY. BUT, IT WOULD BE NICE TO KNOW HOW.

HERE ARE SOME ANSWERS:

FIRSTLY: THE ANSWER TO THE QUESTION OF HOW – IS – VIA A DREAM – GOD IS DREAMING ALL OF THIS. IT IS A PICTURE SHOW GOING ON IN GOD'S SPACE – WE ARE THE PLAYERS. THIS IS VERY MUCH LIKE THE MOVIE CALLED "MATRIX". THIS DREAM THING IS NOT A NEW STATEMENT – NUMEROUS BOOKS, YOGIS AND EVEN SAI BABA HIMSELF STATE THIS.

BUT, THERE IS AN ENERGETIC PROCESS VIA WHICH THIS OCCURS. THIS ENTIRE UNIVERSE AND EVERYTHING IN IT IS AN ELECTROMAGNETIC CONSTRUCT – MATTER DOES NOT EXIST – IT IS AN ILLUSION. THERE IS, HOWEVER, A RULE THAT GOVERNS THE BEHAVIOR OF ELECTROMAGNETISM – RESONANCE or LIKE ATTRACTS LIKE or WHAT GOES AROUND COMES AROUND or KARMA.

THERE ARE, OF COURSE, MAXWELL'S EQUATIONS THAT EXPLAIN AND ANALYSE THE BEHAVIOR OF ELECTROMAGNETISM IN 3-D. BUT, IN ORDER TO UNDERSTAND THIS WE HAVE TO START IN 2-D, PLEASE. IN 2-D THERE ARE NO NUMBERS, BUT THE RULE LIKE ATTRACTS LIKE IS THERE AND THUS, LOGIC – LEAD PIPE LOGIC – AS I HOPE TO BE ABLE TO EXPRESS HERE:

AGAIN, WE ARE ANSWERING THE QUESTION AS TO HOW CONSCIOUSNESS ORGANIZES THE WATER CRYSTALS AND THUS, THAT ANSWER WILL EXPLAIN HOW ALL OF CREATION MANIFESTS – ELECTROMAGNETICALLY.

SO – HERE IS A LETTER THAT WAS WRITTEN TO SOME PHYSICISTS:

GENTS

I HAD ONE OF THOSE EPIPHANYS

THINKING ABOUT HOW MATTER SKIPS ACROSS THE GAPS IN THE AETHER. MATTER IS ONLY HERE HALF OF THE **TIME** - FITS WITH NEILS BOHR'S DREAM THAT MATTER MOVES IN A JITTERBUG MOTION - THE REST OF THE **TIME** THEY DO NOT SPECULATE ON WHERE IT IS - BUT, I THINK WE ALL KNOW THAT IT IS THE AETHER - IT IS ALWAYS IN THE AETHER, JUST THAT THERE ARE GAPS IN THE AETHER - IF YOU WANT A PICTURE OF THIS I AM HAPPY TO PROVIDE SAME.

THE AMAZING THING ABOUT THIS SKIP IS THAT WHOLE ENTIRE THINGS DO IT IN UNISON - YOUR WHOLE BODY IS HERE, THEN NOT HERE, THEN HERE AGAIN - LIKE THE FLOCKS OF BIRDS THAT ALL TURN PRECISELY AT THE SAME **TIME** - OR EVEN THE 100th MONKEY FRUIT WASHING ADAPTATION - THE ENTIRETY OF THE SPECIES ALL GOT THE MESSAGE IN THE SAME INSTANT.

SO, THE QUESTION IS THIS:

HOW LONG DOES IT TAKE FOR "MATTER" TO APPEAR AS SUCH? HOW LONG DOES IT TAKE FOR THE ELECTRON TO CONVERT FROM A FIELD TO A PARTICLE?

OR IN MY PARLANCE: HOW LONG DOES IT TAKE FOR THINGS TO CONVERT FROM 2-D TO 3-D?

THE ANSWER THAT I GOT IS THIS - **NO TIME**.

I SUBMIT TO YOU THAT THE REASON FOR THIS IS THAT IN 2-D THERE IS **NO TIME**.

THEREFORE, THE PROCESS THAT THE ELECTRON MUST DO IN ORDER TO CONVERT FROM A FIELD TO A PARTICLE - THE VAST MAJORITY OF THE CONVERSION IS DONE IN 2-D AND THUS WE SEE NOTHING AND THEN JUST SCREEN ON, WITHOUT SEEING ANY OF THE PROCESS I.E. SEQUENCE OF ENERGETIC EVENTS BETWEEN THE FIELD AND THE PARTICLE - THERE HAS TO BE SUCH -

AND THERE IS - THE OBVIOUS EXAMPLE OF THAT IS THE LCD SCREENS. EVERYTHING THAT HAPPENS "HERE" HAS ITS BASIS IN SPIRIT FROM "THERE".

FOR MOST OF US, WE WANT TO RELATE THIS TO A SQUARE WAVE WITH A VERY TINY RISE **TIME**. ONLY IN THIS CASE, WE HAVE ONLY SCREEN OFF AND SCREEN ON - THERE IS NO RISE **TIME**.

I'VE NOT HEARD OF THIS QUESTION BEING POSED BY PHYSICS - HAVE ANY OF YOU?

PLUS, PLEASE CONSIDER WHAT ONE MIGHT BE ABLE TO DO IF YOU CAN MANIPULATE THIS PROCESS AS IT OCCURS. LIKE CURE CANCER WITH A THOUGHT OR MAKE IT RAIN ON A CLEAR DAY OR - WELL YOU NAME IT - WE ARE TALKING PRESTO CHANGEO

PLEASE ADVISE.

BLESSINGS,
M

FROM THE HOLY KORAN: AND HIS CREATION IS NOT DEPENDENT ON **TIME**, ON INSTRUMENTS OR MEANS, OR ANY CONDITIONS WHATSOEVER. EXISTENCE WAITS ON HIS WILL, OR PLAN OR INTENTION. THE MOMENT HE WILLS A THING, IT BECOME HIS WORD OR COMMAND, AND THE THING FORTHWITH COMES INTO EXISTENCE. 2:177; 16:40, 36:82

THERE ARE SOME AMAZING THINGS IN THE KORAN – LIKE THE PREDICTION THAT THE MEN TRAVELLING TO THE MOON WOULD SEE NO STARS AND THAT WAS THE CASE SOME 1600 YEARS LATER.

SO, OUR ANSWER HAS TO COME FROM AN AREA OF THIS UNIVERSE WITHIN WHICH TIME DOES NOT EXIST. AND NO TIME – MEANS NO NUMBERS – NO MATHEMATICS – NO COMPARISONS – NO QUANTITIES – NO FREQUENCIES BECAUSE THERE ARE NO SECONDS – THUS, NO CYCLES PER SECOND.

BUT, THERE IS LOGIC AND THE RULE – LIKE ATTRACTS LIKE – AND, OF COURSE, SPACE / CONSCIOUSNESS.

SO THAT'S IT – THOSE ARE THE PARAMETERS AND THERE AREN'Y ANY OTHERS. REALLY, WE HAVE JUST - LIKE ATTRACTS LIKE AND SPACE - BECAUSE LIKE ATTRACTS LIKE AND LOGIC ARE THE SAME AND SPACE CONTAINS CONSCIOUSNESS AND INFINITELY MORE.

THE RULE CAME ABOUT AS SPACE WAS TRYING TO IDENTIFY HERSELF – THUS, THE FAMOUS - I AM THAT I AM - WHICH IS EASIER TO UNDERSTAND WHEN STATED – LIKE ATTRACTS LIKE... THENCE, WE GET THE AETHER, WHICH YOU CAN TAKE A PICTURE OF – JUST LIKE THE PICTURES OF THE WATER CYRSTALS – THERE ARE PICTURES OF THE AETHER IN THE FORM OF WIMPS – WEAK INTERACTIVE MASSIVE PARTICLES – ANY PICTURE OF A LARGE AREA OF SPACE SHOWS THE WIMPS – IT IS A GIGANTIC HONEYCOMB. AND THERE ARE PICTURES IN THE MICROCOSOM – ONE SPECIFICALLY AS REPORTED IN THE PHYSICAL REVIEW LETTERS TITLED “1776 EVAPORATIONS OF IRIDIUM ONTO A SUPER COOLED TUNGSTEN PLATE”. THE IRIDIUM

ORGANISED ITSELF ON THE PLATES INTO ROWS THAT ARE 6.3 ANGSTROMS WIDE WITH GAPS BETWEEN THE ROWS THAT ARE ALSO 6.3 ANGSTROMS WIDE.

DITTO THE FAMOUS DOUBLE SLIT EXPERIMENT DONE WITH LIGHT – THE RESULTING PATTERN IS EXACTLY HOW THE AETHER LOOKS I.E. A BAR OF LIGHT – THEN A BAR OF DARKNESS – THEN A BAR OF LIGHT, ETC. AD INFINITUM

THUS, WE HAVE PICTURES THAT VERY CLEARLY SHOW WHY MATTER MOVES IN A JITTERBUG MOTION – IT HAS TO CROSS THE GAPS – FOR US IT SKIPS FROM ONE BAR OF LIGHT TO ANOTHER. IN ACTUALITY THE MATTER COMPLETELY DISINTEGRATES AND IS REFORMED AS IT RE-ENTERS THE LIGHT – AS STATED ABOVE THIS ALL HAPPENS IN NO TIME.

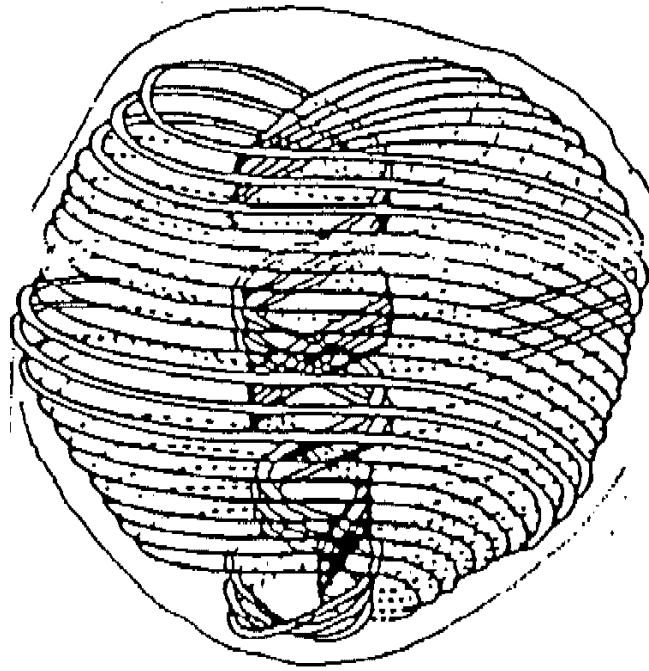
IN THE GAPS WE HAVE SPACE / CONSCIOUSNESS – THUS, AS THE MATTER PASSES THROUGH THE GAPS IT IS FORMED BY GOD'S DREAM.

WE ALL KNOW OF MIRACULOUS EVENTS CALLED “ACTS OF GOD”. WOMEN PICKING UP A CAR TO GET IT OFF OF THEIR KID, STATUES OF THE MADONA WEeping TEARS OF BLOOD, STATUES OF HINDU GODS LEAKING MILK, SAI BABA'S PICTURES MANIFESTING HIS HEALING ASH (MY PICTURE OF HIM AS DONE THIS), SPONTANEOUS REMISSION OF CANCER, NEAR DEATH EXPERIENCES, PEOPLE CAUGHT IN BUILDINGS THAT HAVE BEEN DESTROYED BY MISSILES OR AVALANCHES – DUG OUT TOTALLY UNSCATHED, PEOPLE SAVED FROM CAR CRASHES, I LOVE THIS ONE – THE BUDDHIST MONASTERY IN HIROSHIMA, IT WAS INSIDE OF GROUND ZERO AND TOTALLY UNSCATHED BY THE ATOMIC BLAST WHILE EVERYTHING AROUND IT WAS MELTED OR BLASTED TO TINY BITS – LOVE CONQUERED THE ATOMIC BOMB - DITTO THE CHURCH IN COLOGNE, GERMANY – EVERYTHING AROUND IT WAS NO LARGER THAN A SINGLE BRICK – THE CHURCH ITSELF – NOT ONE PIECE OF STAINED GLASS WAS CRACKED, ETC. ETC. ETC. ALL DEFYING THE LAWS OF PHYSICS

SO, I ASSURE YOU THAT MATTER GETS ITS FORM FROM THE GAP/GOD EACH AND EVERY MICROINSTANT.

BUT, WE MUST CONTINUE, BECAUSE THERE IS AN ELECTROMAGNETIC SEQUENCE OF EVENTS THAT HAS TO OCCUR AS THE MATTER CROSSES THE GAPS. MATTER DISINTEGRATES AND THEN RE-FORMS.

SO, WE GO BACK TO THE BEGINNING AGAIN. FIRST SPACE – THEN THE AETHER – NEXT WE HAVE THE ANU:



THE FIRST NAME OF GOD IN THE ANCIENT TEXTS IS "ANU" – AND IT IS EASY TO SEE WHY. THE ENERGY THAT SUPPORTS ALL THINGS COMES TO US VIA THE ANU. THE HINDUS HAVE WORSHIPED THE LINGHAM/ANU FOR THOUSANDS OF YEARS AS BEING THE SHAPE THROUGH WHICH ENERGY PASSES AS IT GOES FROM FORMLESSNESS TO FORM AND VISE-A-VERSA. ONE CAN TAKE A KIRLIAN PICTURE OF THE ANU SHAPED AURA SURROUNDING THE HUMAN BODY **AS WELL AS ALL OTHER THINGS** – PLUS, THERE IS A TIGHT SPIN OF GALAXIES GOING RIGHT UP THROUGH THE MIDDLE OF THIS UNIVERSE THAT LOOKS LIKE THE DNA SPIN IN THE CENTER OF THE ANU. THERE IS NO MYSTERY HERE – THIS IS NOT A THEORY – THE EXISTANCE OF THE ANU IS A FACT.

SO, THE WAY THAT GOD'S DREAM IS CREATED ELECTROMAGNETICALLY HAS TO INCLUDE THIS ABORIGNAL AND UBIQUITOUS ENERGY SHAPE – THE ANU.

THE ANU IS THE BUILDING BLOCK – THE ELECTROMAGNETIC SHAPE THAT IS THE HEART AND SOUL OF ALL THINGS. THUS, WE HAVE TO SHOW THE ELECTROMAGNETIC PROGRESSION OR SEQUENCE OF EVENTS FROM THE ANU TO MATTER.

BUT, FIRST – WHERE DID THE ANU COME FROM?

AT THAT JUNCTURE THERE ARE THREE PARAMETERS:

THE FIRST TWO: **1)** SPACE / GOD / CONSCIOUSNESS AND

2) THE RULE "LIKE ATTRACTS LIKE" / "I AM THAT I AM" / LOGIC

AND, WE HAVE **3)** THE AETHER. THAT'S IT. FROM THESE THINGS WE HAVE TO CONSTRUCT THE ANU. HERE IS PROOF OF THE AETHER:

http://www.divinecosmos.com/index.php?option=com_content&task=view&id=95&Itemid=36

THINGS WERE VERY VERY SIMPLE – THERE WAS NOTHING OTHER THAN THESE THREE THINGS. ONE WANTS TO SAY, WELL THERE WAS CONSCIOUSNESS, SO THERE WERE THOUGHTS – OK – WHAT THOUGHTS?

WHAT MEMORIES? HEY, THERE WAS NOTHING – NADA – ZIP. NOTHING TO THINK ABOUT AND NOT ONE THING TO REMEMBER THESE THINGS WE ARE GOING TO DESCRIBE CAME ABOUT RATHER AUTOMATICALLY AS A FUNCTION OF THE RULE, WHICH IS A RESULT OF THE DESIRE – SPACE WANTED TO IDENTIFY HERSELF. BUT, IN ORDER TO DO THAT – THERE HAD TO BE AN INITIAL COHESION – CREATING A BLOB – A WIMP IN SPACE. SO, REALLY THE DESIRE, THE RULE AND THE AETHER HAD TO COME ABOUT SIMULTANEOUSLY. OF COURSE, EVERYTHING WAS SIMULTANEOUS BACK THEN – THERE WAS NO TIME – AND THE SAME IS STILL TRUE – IN THE 2-D REALMS.

SO, IN THE BEGINNING THERE WAS NOT MUCH GOING ON IN THE WAY OF MENTAL PROCESSES – THINKING. BUT, OBVIOUSLY THERE DID COME SOME BRIGHT IDEAS – SO, AGAIN – HOW? THAT ANSWER IS INCREMENTAL ADVANCES – ONE TINY STEP AT A TIME. ONE VERY SIMPLE THOUGHT AFTER ANOTHER – THEN RE-THINK AND IMPROVE = EVOLUTION.

NOW, I HAVE TO SAY THAT THIS, ALSO, EXPLAINS THE APPARENT EVOLUTION OF ALL THINGS – INCLUDING THE ANIMALS AND US HUMANS. SO, IF YOU COMBINE THE CREATIONIST THEORY WITH DARWIN'S OBSERVATIONS, YOU COME TO THE CORRECT SEQUENCE OF EVENTS – THAT APPEARS AS EVOLUTION. IN ORDER TO CREATE A CHAIR, FIRST YOU HAVE TO THINK ABOUT IT.

SO, HOW DID THE ANU COME ABOUT? WELL SPACE HAD A THOUGHT – ONLY SHE KNOWS WHAT THOUGHT (well one would hope – what goes through the mind of a woman?). THAT THOUGHT OCCURRED INSIDE OF SPACE AND THE AETHER. SO, WHAT HAPPENED TO IT?

WE LIKE TO THINK THAT THOUGHTS PROGRESS IN A LINEAR LOGICAL FASHION – FOR MOST PEOPLE THEY DO. SO, IN THE BEGINNING SPACE HAD VERY SIMPLE THOUGHTS – ONE AT A TIME. AND, YIKES, THE FIRST ONE HAD AN AMAZING RESULT – THE ANU.

THE ANU IS FORMED:

THAT THOUGHT WENT INTO THE AETHER WHERE IT ENCOUNTERED THE RULE, “LIKE ATTRACTS LIKE”. SO, IT HAD TO CIRCLE BACK ON ITSELF, WHICH CREATED THE INITIAL SPIN IN THE CENTER OF THE ANU.

THAT FIRST SPIN COULD NOT CARRY ON FOREVER BECAUSE OF THE RULE AND BECAUSE OF THE WALLS OF THE AETHER – SO IT HAD TO CIRCLE BACK ON ITSELF, BUT THE CENTER SPIN KEPT SPINNING, WHICH CAUSED THE ENERGY LINE WHICH WAS HEADED STRAIGHT BACK TO CREATE A SPIN IN THE OPPOSITE DIRECTION ON THE OUTSIDE.

THAT ENERGY THEN HEADS UP THE CENTER AGAIN – CREATING THE DNA LOOKING SPIN IN THE CENTER OF THE ANU.

THERE YOU HAVE IT – THE ANU – LOGICALLY FORMED.

YOU COULD SAY THAT WE HAVE NOW ARRIVED AT SQUARE ONE – THE ANU.

THE ANU, WHICH, BY THE WAY, CONTAINS THE ENTIRETY OF CREATION – EACH AND EVERY ANU HAS THE WHOLE THING WITHIN IT: THE GAP IN THE CENTER OF THE DNA SHAPED SPIN ENERGY IS CONNECTED TO SPACE – ALL SPACE IS BASICALLY THE SAME I.E. GOD.

- WHAT DO YOU HAVE WITHIN SPACE?
- TWO ANSWERS - NOTHING AND EVERYTHING
- WHAT DO YOU HAVE IN ANY PIECE OF SPACE? THE SAME TWO ANSWERS SPACE AND ALL THINGS WITHIN IT IS REFERRED TO AS BRAHMA IN THE HINDU

PLUS, THE ANU HAS LEFT AND RIGHT HANDED SPIN WHICH IS HOW THE HINDU REFER TO THE REST OF THEIR TRINITY I.E. VISHNU IS THE PERSERVER OF FORM AND IS KNOWN TO BE RIGHT HANDED SPIN – WHILE, SHIVA IS THE DESTROYER OF FORM & EGO AND IS DESCRIBED AS BEING LEFT HANDED SPIN. SO, THE ANU CONTAINS THE TRINITY – FATHER, SON AND HOLY GHOST IF YOU WANT TO CALL THEM THAT aka BRAHMA, VISHNU & SHIVA.

WE ARE NOT DONE WITH OUR LOGICAL SEQUENCE OF EVENTS:

WE DO HAVE TO ARRIVE AT VIBRATIONS AND MATTER.

SO WHAT HAPPENS TO THE ANU?

WE NOW HAVE FIVE PARAMETERS: SPACE, THE RULE, THE AETHER, THE ANU AND GOD’S THOUGHTS (which are not many, we are barely beyond, “I am that, I am”, you can see that each anu is a repository for a thought or sequence of events, memories are stored on anus. God said that he made us in his likeness – well actually it is exactly like God – we are all anus).

SO, ACCORDING TO THE RULE – THE ANU HAS TO MIRROR ITSELF I.E. LIKE ATTRACTS LIKE. SO THE ANU MIRRORS OFF ACROSS A GAP IN THE AETHER. THEN THOSE TWO ANUs MIRROR OFF TOGETHER FORMING THIS SQUARE ARRAY:

(&)()(&) IT IS IMPORTANT TO NOTE THAT THE AETHER IS THE HOME OF
() () THE ANU – THE SHEETS OF THE HONEYCOMB ARE 2-D
(&)()(&) THUS, THE ANU IS A 2-D CONSTRUCT – DESPITE BEING OVOID, 3-D, TO US

THIS WHOLE ARRAY THEN MIRRORS OFF INTO THE NEXT LAYER OF THE HONEYCOMB AETHER AND THEN AGAIN – AND THEN AGAIN – COMING OUT OF THE PAGE IN BOTH DIRECTIONS. BUT, NOT IN A STRAIGHT LINE, ACCORDING TO THE RULE – THESE ARRAYS HAVE TO CIRCLE BACK ON THEMSELVES – THUS FORMING A DONUT OR TORROID. LIKE TAKING A BOOK AND OPENING IT WIDE OPEN WITH THE BOOK COVERS TOUCHING EACH OTHER – THEN REMOVING THE SPINE OF THE BOOK – CREATING THE DONUT HOLE.

PHASE ANGLE: NOW, IT IS MY BELIEF THAT THE ANUs ALSO FLIP UP WITHIN THEIR CELLS MAKING THEIR CENTER CORE AT RIGHT ANGLES TO THE FLOW. THE REASON I SAY THAT IS BECAUSE THE ELECTRIC AND MAGNETIC COMPONENTS HAVE DIFFERENT PHASE ANGLES BETWEEN THEM. IN OUR CORPORAL REALITY THE PHASE ANGLE IS AT 90 DEGREES. HOWEVER, THERE ARE LOTS OF NON-POLAR EM FIELDS WHERE THE PHASE ANGLE HAS TO BE DIFFERENT I.E. PARALLEL – MOST PROBABLY. BOTTOM LINE IS THAT WE HAVE TO HAVE A REASON FOR THE ANUs DISENGAGING FROM THEIR NORMAL 2-D STATUS, WHERE THERE IS NO POLARITY AND CREATING OUR POLARIZED UNIVERSE.

TORROIDS CREATE AND ABSORB FREQUENCY. EXAMPLE: THE TESLA COIL IS A TORROID AND IS HOW ALL RADIO WAVES ARE BROADCAST. AND THE TIRES ON YOUR CAR – THEY ABSORB LOTS OF FREQUENCY. THERE ARE MANY MORE EXAMPLES – BUT THESE ARE THE SIMPLEST.

GOING BACK TO THE AETHER/ANU ARRAY FOR A MOMENT:

FROM PAGE 40 OF DR. EMOTO’S BOOK:

‘According to the *Hanyashingyo*, the Buddhist *Wisdom and Heart Sutra*, “That which can be seen has no form, and that which cannot be seen has form.” We can now say that this strange contradiction, spoken ages ago by the Buddha, has been proved true by modern science. ‘

HIS IDEA IS THAT VIBRATIONS ARE THE ROOT OF FORM. HOWEVER, IT IS THE AETHER AND THE ANU, WHICH ARE THE ABORIGINAL FORMS – SHOWN ABOVE WITH A FIRM SQUARE FORM. SO, THIS SUTRA FROM THE BUDDHA, AS WITH NEARLY ALL OF THE SCRIPTURES HAS BEEN MISINTERPRETED. ONE OF MY FAVORITES THE CHRISTIAN

PRECEPT THAT WE ARE ALL CONCEIVED IN SIN – THANKS TO ST. AUGUSTINE – IF EVERYTHING YOU SEE IS GOD, THEN HOW IS IT POSSIBLE TO BE CONCEIVED IN SIN?

WE ARE STILL NOT DONE FORMING MATTER.

THESE TORROIDS CLANG TOGETHER – ATTRACT ONE ANOTHER ACCORDING TO THE RULE. AND THEY CLANG TOGETHER THEY CREATE WHAT IS CALLED THE MUSIC OF THE SPHERES – REALLY IT IS THE MUSIC OF THE TORROIDS.

AND THE TORROIDS GROUP TOGETHER ACCORDING TO THE FIBONACCI SERIES – PROBABLY THE SIMPLEST MATHEMATICAL PROGRESSION I.E. 1, 1, 2, 3, 5, 8, 13, 21, 34, 55 ETC. WHICH IN THE LARGER NUMBERS IS CLOSELY APPROXIMATED BY THE GOLDEN MEAN (aka PHI). ALL NATURAL THINGS MANIFEST ACCORDING TO THE GOLDEN MEAN. THE BRANCHES AND LEAVES OF THE TREES, YOUR BODY, THE MUSICAL SCALES, THE SIZE OF THE ATOMS, AND THE DISTANCES BETWEEN THE PLANETS – THE SIZES OF ALL THINGS IN NATURE ARE GOVERNED BY GOD'S DIVINE CANON OF PROPORTION – THE GOLDEN MEAN. THE REASON FOR THAT IS BECAUSE THAT IS EXACTLY HOW THE TORROIDS GROUP TOGETHER.

IT GRIPES ME THAT PHYSICS – THE STUDY OF PHYSICAL EVENTS – DOES NOT EVER TALK ABOUT THE GOLDEN MEAN NOR THE ANU – BOTH OF WHICH EXIST IN NATURE BIG TIME AND ARE NOT THEORY. INSTEAD THEY WANT TO TALK ABOUT 22 DIMENSIONS, RELATIVITY AND ALL MANNER OF MATHEMATICAL TRICKS OF THE MIND.

THE MATH – THE BEGINNING: SCIENCE THESE DAYS REQUIRES MATHEMATICAL PROOF OF THE VARIOUS THEORIES. WELL IN THE 2D THERE IS NO MATH BECAUSE THERE IS NO TIME AND NO STRAIGHT LINES ALONG WHICH YOU CAN MEASURE – THUS, NO DIMENSIONS – HOWEVER, THERE ARE ENTIRE REALMS. THEN AS WE PROGRESS TO THE TORROID PHASE, THEN STARTS TIME AND FREQUENCY – HERE WE FIND THE SIMPLEST OF MATHEMATICAL PROGRESSIONS – THE PROOF OF WHICH IS IRREFUTABLE – NO MYSTERY – IT IS RIGHT IN FRONT OF YOU IN ALL THINGS – GOD'S DIVINE CANON OF PROPORTION – THE GOLDEN MEAN. WHY IS THAT? BECAUSE THIS IS THE ROOT MATHEMATICAL PROGRESSION – SIMPLE. THIS IS THE FIRST MANIFESTATION OF MATHEMATICS – THIS CONCLUSION IS LEAD PIPE LOGIC – IRREFUTABLE – CAN NOT BE CHALLENGED IN ANY MANNER.

BUT, WHY DO THE PHYSICISTS NOT TALK ABOUT IT??? THIS IS AMAZING REALLY, BECAUSE THE GOLDEN MEAN PLOTS OUT TO BE A HYPERBOLA, THE AREA UNDER WHICH IS DETERMINED VIA THE CALCULUS FUNCTION OF INTEGRATION – THENCE TO DIFFERENTIAL EQUATIONS AND ALL OF MODERN MATH. EVERYTHING HAS ITS ROOT IN SPIRIT (THE AETHER & THE ANU). AND THIS GOES ON TO THE ROOT REASON THAT COMPUTERS CAN CALCULATE I.E. AS A MATHEMATICAL FUNCTION CROSSES THE CAPACITANCE CREATED BY THE TRANSISTOR OR THE VACUUM TUBE – THE GAP THEREIN AUTOMATICALLY PERFORMS THE CALCULUS FUNCTION OF INTEGRATION, WHICH IS HOW YOU SOLVE FOR THE AREA UNDER A CURVE I.E. DETERMINE THE POWER OF THAT ENERGY I.E. FIND OUT HOW MUCH POWER THERE IS IN A PARTICULAR FREQUENCY.

ANYWAY, ALL OF MATH – ALL NATURAL THINGS – ALL ARE MANIFEST ACCORDING TO THE SIMPLEST MATHEMATICAL PROGRESSION, THE FIBONACCI SERIES, THE GOLDEN MEAN = GOD'S DIVINE CANON OF PROPORTION.

AN ELECTRON HAS A FREQUENCY, WHICH MEANS THAT IT IS MANIFEST VIA TORROIDS ACCORDING TO THE GOLDEN MEAN. SO, WHEN THE ELECTRON FIELD CONDENSES INTO THE PARTICLE – IT HAS TO GO THROUGH THE ENTIRE DIVINE SEQUENCE OF ELECTROMAGNETIC EVENTS – ALL OF WHICH OCCURS IN NO TIME IN 2D – UNTIL YOU GET TO THE TORROID PHASE, 3D – THEN YOU INSTANTLY HAVE AN ELECTRON WITH TIME, NUMBERS AND MATH.

SORRY, ANOTHER IMPORTANT POINT IN PHYSICS: THE MEISSNER FIELD THAT PROTECTS THE INNER VALANCES OF ELECTRONS FROM IONIZATION IT IS A **NON-POLAR ELECTROMAGNETIC FIELD**. DITTO THE FIELD AROUND A WORKING SUPER CONDUCTOR –

IT IS A NON-POLAR ELECTROMAGNETIC FIELD. WHICH BRINGS UP ONE GIANT QUESTION – HOW DO YOU HAVE MAGNETISM AND PARTICULARLY ELECTROMAGNETISM WITHOUT POLARITY?

ONE THING: IN THE MEISSNER FIELD, I WILL ASSURE YOU THAT THE ELECTRIC AND MAGNETIC COMPONENTS ARE NOT AT RIGHT ANGLES LIKE THEY ARE IN ALL MEASURED FREQUENCIES, WELL ALL THINGS THAT ARE MEASURED HAVE A 90 DEGREE PHASE ANGLE BETWEEN THE ELECTRIC AND MAGNETIC COMPONENTS.

ANOTHER THING: THEREFORE, THESE NON-POLAR FIELDS MUST BE 2D IN ORIGIN. THESE 2D FIELDS ARE THE ROOT CAUSE OF GRAVITY (LIKE ATTRACTS LIKE). THESE FIELDS OCCUR IN THE GAPS IN THE AETHER. THESE FIELDS ARE ALWAYS CONNECTED TO EACH OTHER – THUS, BELL'S THEROEM – THIS IS WHY AND HOW IT WORKS. SUPER CONDUCTANCE WORKS VIA SUCH FIELDS – ANUs MANIFEST WITHIN SUCH FIELDS. THESE FIELDS ARE THE LIGHT OF LIFE – FRITZ POPP'S BIO-PHOTONS. THESE FIELDS ARE VERY HEALING IN NATURE – AUTOMATICALLY.!!! AS DISCUSSED IN THE MOVIE, "WHAT THE BLEEP?" THESE ARE THE CONSCIOUS FIELDS THAT CONTROL MATTER. THESE FIELDS ARE THE **STRING** BETWEEN MATTER AND ANTI-MATTER – BETWEEN THE ELECTRON AND THE POSITRON. THESE FIELDS ARE THE CONNECTION TO GOD – THEY ACTUALLY ARE GOD – THUS, THE "CONNECTION" IS REALLY A CONTINUITY OF GOD – THESE SEEMINGLY SEPARATE THINGS ARE REALLY ALL EXACTLY THE SAME – GOD.

NOW, WE STILL HAVE TO FINISH THE ELECTROMAGNETIC PROCESS FROM THE TORROID TO THE CRYSTALS IN THE WATER. FIRST OF ALL, PLEASE NOTE THAT THESE SNOW FLAKE LOOKING WATER CRYSTALS ARE FLAT, TWO DIMENSIONAL (2D). I WONDER WHY? MAYBE BECAUSE THAT IS THEIR ROOT NATURE?

NESTING:

NEXT THE TORROIDS THEMSELVES CLANG TOGETHER AND FORM LARGER TORROIDS, WHICH FORM THE SUB-ATOMIC PARTICLES – EACH OF WHICH IS SURROUNDED BY A LARGER ANU. THEN THE ATOMS FORM – STARTING WITH THE SIMPLEST – HYDROGEN – EACH OF WHICH IS SURROUNDED BY AN ANU, WHICH IS CONNECTED TO THE AETHER & GOD. LARGER AND LARGER SETS OF TORROIDS AND ANUs **NESTED** LIKE A SET OF CHINESE BOXES – DEPAK CHOPRA SHOWED A PICTURE OF THIS EMANATING FROM THE HEART CHAKRA OF EVERYBODY – THE PICTURE SHOWED PROGRESSIVELY LARGER TORROIDS EMANATING OUT FROM THE CHAKRA. AND, THERE ARE PLENTY OF PICTURES SHOWING NATURALLY FORMING TORROIDS.

THIS IS A NATURAL AND AUTOMATIC PROGRESSION I.E. THE TORROIDS FORM AN ELECTRON. THE ELECTRON IS A MANIFESTATION IN CONSCIOUSNESS – THUS, IT HAS ITS OWN ANU – THE SINGULARITY/GOD THAT CONNECTS ALL THINGS (small wonder that the ancient texts refer to the anu as god).

THEN THESE CONSTRUCTS GROW ON THEIR OWN BECOMING LARGER AND SMALLER AND NESTED WITHIN LARGER AND SMALLER AETHERIC REALMS. THE ELECTRON HAS ITS OWN ANU, HUMANS HAVE THEIR OWN ANU AND THIS UNIVERSE HAS ITS OWN ANU – ALL OF WHICH HAVE TO BE CONTAINED IN AN AETHER AND ALL OCCUPYING THE SAME SPACE – NESTED TOGETHER.

THUS, WHAT **YOU** DO IN ONE REALM RIPPLES THROUGHOUT INFINITY – BE CAREFUL WHAT YOU THINK.!!! BECAUSE THAT NEST WILL GROW.

FROM THE ELECTRON, THEN WE HAVE THE HYDROGEN ATOMS WHICH FUSE TOGETHER FORMING LARGER & LARGER ATOMS. AND WE ARRIVE AT THE VARIOUS MOLECULES, ALL OF WHICH HAVE THEIR OWN ANUs.

THEN WE HAVE WATER – A DIVINE SUBSTANCE, IF THERE EVER WAS ONE WITH AMAZING AND UNEXPLAINABLE PROPERTIES. THE WATER FORMS THE

HEXAGONAL CRYSTALS DUE TO ITS OWN ROOT TRIANGULAR SHAPE – THAT IS NOT DIFFICULT.

NOW IF YOU LOOK CLOSELY YOU WILL SEE THAT THE DISTILLED WATER FORMS A STERILE LOOKING CRYSTAL, WHEREAS LOVE & GRATITUDE FORMS A MULTI-FACETED CRYSTAL – BUT, EACH OF THOSE NESTED CRYSTALS IS JUST A SMALL MIRROR OF THE LARGER ONES- CONNECTED AND NESTED JUST AS THE TORROIDS AND ANUs ARE – IT IS EXACTLY THE SAME THING (again, that which you see has no form – that which you do not see has form).

SO, THE LOVING IDEAS CREATE MULTI-FACETED CRYSTALS THAT OBVIOUSLY HAVE AN AFFECT ON SEVERAL LAYERS OF THE NESTED CREATION – LOOK AT THE PICTURES. WHEREAS, THE NEGATIVE IDEAS DON'T MAKE IT VERY FAR – AGAIN SHOWING THAT THE ROOT OF CREATION IS LOVE.

THE AMAZING THING IS THAT THIS WHOLE ELECTROMAGNETIC PROCESS OCCURS EVERY MICRO-SECOND IN ORDER FOR US TO SEE WHAT WE SEE – AND I MEAN EVERYTHING THAT WE SEE – IT ALL MANIFESTS RIGHT IN FRONT OF YOUR EYES. BABA SAYS: GOD = **G**ENERATION – **O**RGANIZATION - **D**ESTRUCTION

SO, AS WE HARKEN BACK TO DR. EMOTO'S WATER CRYSTALS WE NOW KNOW EXACTLY WHAT HAPPENS TO CAUSE HIS CRYSTALS TO FORM. AND THERE IS ANOTHER VERY IMPORTANT OBSERVATION AND CONCLUSION HERE:

THE CRYSTALS FORM WHEN THE WATER IS SUBJECTED TO A POSITIVE OR VISHNU TYPE ENERGY. AND, NO CRYSTALS FORM FROM NEGATIVE OR SHIVA ENERGY.... SO:

LOVE IS THE ONLY ORGANIZING ENERGY

VIOLENT ART IS NOT ART – I MEAN, THAT ALL OF THESE ACTION MOVIES FULL OF VIOLENCE AND DESTRUCTIVE VIDEO GAMES. THEY HAVE A NEGATIVE AFFECT ON THE BODY'S WATER – SO, THEY DESTROY YOUR BODY. AND, THEY HAVE VERY LITTLE LASTING AFFECT WITHIN THE UNIVERSE – THEY ARE NOT ART.!!!

IT IS ACTUALLY A BIT DIFFICULT TO CONTINUE MAKING NEGATIVE STUFF VIA GOD'S DIVINE CANON OF PROPORTION AND THE ANU, THE BASIC NATURE OF WHICH IS LOVE. SO, LOVE IS THE MOST POWERFUL FORCE ON THIS PLANET AND IN THIS UNIVERSE, AS DR. EMOTO HAS SO PROVEN.

COMMENTS ON "WHAT THE BLEEP"

OBVIOUSLY THE WHOLE THRUST OF THE MOVIE WAS TO STATE THAT CONSCIOUSNESS AS SIGNIFICANT CONTROL OF MATTER – HOWEVER, IN FACT, CONSCIOUSNESS HAS COMPLETE DOMINION OVER MATTER. THE MOVIE WAS FRUSTRATING, BECAUSE IT JUST DIDN'T GO ALL THE WAY.

THE MOST GLARING EXAMPLE WAS DR. EMOTO'S CRYSTALS – THE CONNECTION BETWEEN WATER AND CONSCIOUSNESS IS OBVIOUS. BUT, THEY DON'T EVEN SURMISE AS TO HOW.

AND THEY NEVER MENTIONED THE ANU, WHICH IS RIDICULOUS. NOR THE GOLDEN MEAN, WHICH IS INANE – I MEAN, YOU HAVE A BUNCH OF EGG HEADS

TRYING TO MAKE US BELIEVE THEY KNOW WHAT THEY ARE TALKING ABOUT AND WRITING ALL KINDS OF MATHEMATICAL EQUATIONS BUT THEY MISS THE SIMPLEST AND MOST OBVIOUS EQUATION – THE GOLDEN MEAN.

HOWEVER, THEY DID HAVE SOME GOOD STUFF:

WE WILL START WITH CONNECTIVITY – ALSO REFERRED TO AS ENTANGLEMENT – MEANING THAT THE SUB-ATOMIC PARTICLES SEEM TO BE CONNECTED. THE TERM ENTANGLEMENT SOUNDS LIKE INTERFERING FREQUENCIES, WHICH IS NOT CORRECT. THE TERM CONNECTIVITY IS CLEARER AND IS SAYING THAT THE PARTICLES ARE CONNECTED IN SOME MANNER, WHICH THEY NEVER DESCRIBE OR EVEN SURMISE.

THE MOVIE NEVER MENTIONED IT BUT IT WAS OBVIOUS THAT BELL'S THEOREM WAS AT THE ROOT OF MUCH OF THEIR RAMBLINGS – FOR GOOD REASON: THE EXPERIMENTAL PROOF OF BELL'S THEOREM SHOWED VERY CLEARLY THAT TWO SUB-ATOMIC PARTICLES WERE TOTALLY CONNECTED. ACTUALLY THE EXPERIMENTS SHOWED QUITE CLEARLY THAT THE PARTICLES COULD EVEN KNOW BEFORE HAND WHAT WAS GOING TO HAPPEN TO ITS TWIN. THUS, THIS IS NOT REALLY A CONNECTION – THESE ARE TWO PARTICLES ACTING AS ONE.

FURTHER, IN THE “BLEEP” THEY TALKED ABOUT TWO EXPERIMENTS RUN ON HUMANS:

IN ONE EXPERIMENT THEY WOULD SHOW THE HUMAN TEST SUBJECTS VARIOUS SCENES ON A TV SCREEN. SOME SCENES WOULD BE EMOTIONAL AND OTHERS WERE PASSIVE. THESE SCENES WERE DISPLAYED BY A RANDOM EVENT GENERATOR. SO, THE TEST SUBJECTS HAD NO WAY OF KNOWING WHAT SCENE WAS COMING. HOWEVER, THEIR BODY DID – THEIR BODIES WOULD REACT TO A COMING EMOTIONAL SCENE BEFORE IT APPEARED AND WOULD NOT REACT TO THE COMING PASSIVE SCENES. THIS EXPERIMENT WAS RUN THOUSANDS OF TIMES AND THE RESULTS WERE THE SAME – THE HUMAN BODY HAS THE ABILITY TO KNOW THINGS BEFORE THEY HAPPEN – JUST AS THE PARTICLES IN BELL'S THEOREM KNEW BEFORE HAND.

IN SUMMARY: IN THESE EXPERIMENTS, ALL OF THE TEST SUBJECTS DISPLAYED THE ABILITY TO HAVE PRECOGNITION – JUST AS ALL OF THE PARTICLES IN BELL'S THEOREM KNEW WHAT WAS HAPPENING BEFORE HAND EVERY SINGLE TIME – WITHOUT EXCEPTION.

IN FACT, BELL'S THEOREM IS ONE OF ONLY TWO SUB-ATOMIC EXPERIMENTS THAT HAS THE SAME RESULT EVERY SINGLE TIME FOR ALL EXPERIMENTERS. THIS IS A GIANT PROBLEM FOR THE WORLD OF PHYSICS AND THEY NEVER TALK ABOUT IT.

THIS PHENOMENA IS FURTHER SUPPORTED BY THE NEXT EXPERIMENT RUN ON PEOPLE: IF YOU TOUCH SOMETHING WITH YOUR RIGHT INDEX FINGER, IT WILL STIMULATE A CERTAIN PORTION OF YOUR BRAIN. SO, THEY OPENED UP THE SKULL AND STIMULATED THAT SAME PORTION OF THE BRAIN DIRECTLY TO SEE IF THE FINGER FELT ANYTHING – IT DID. BUT, YOU WOULD EXPECT THE DIRECT BRAIN STIMULATION TO REGISTER THE FEELING IN THE FINGER FASTER THAN THE NORMAL WAY OF STIMULATING THE FINGER – IT DIDN'T. IN FACT, THEY FOUND THAT THE FEELING OF THE FINGER WOULD STIMULATE THE BRAIN EVEN BEFORE THE FINGER ACTUALLY FELT THE TOUCH. IT IS AS IF THE BRAIN KNEW BEFORE HAND – SOUND FAMILIAR?

IN SUMMARY: THESE THINGS ARE NOT CONNECTED – THEY ARE ONE AND THE SAME.

THE BODY ENERGETICALLY IS REALLY AN ANU
THE SEQUENCE OF EVENTS IN THE EMOTIONAL & PASSIVE SCENE ARE ANUs
THE SUB-ATOMIC PARTICLES ARE ANUs

THE ANU NOT ONLY HAS PRECOGNITION IN THIS REALM – IT IS ALSO PRESENT
IN MULTIPLE ADDITIONAL REALMS. IT HAS ACCESS TO ALL KNOWLEDGE – **IT IS
ALL KNOWLEDGE**. SO, THESE TINY PRECOGNITIVE EXPERIMENTS ARE
CHILD’S PLAY FOR THE ANU.

IN THE “BLEEP” THEY MENTIONED “REGIONAL COMPARTMENTS WITHIN SPACE”,
WHICH IS QUITE INTERESTING BECAUSE OBVIOUSLY THE AETHER HAS
EXACTLY THAT. BUT, DID THEY ATTRIBUTE THESE OBSERVED PHENOMENA TO
THE AETHER? NO!! SO AGAIN – SOME HOW – THEY INSIST ON MISSING THE
POINT. AND THIS ONE IS BLATANTLY OBVIOUS.

NEXT: BOSE EINSTEIN CONDENSATES. THEY TALKED ABOUT PARTICLES AS
WAVE FUNCTIONS (AS OPPOSED TO SEEMINGLY MASSY PARTICLES) – THAT
ONE PARTICLE COULD BE IN AS MANY AS 3000 PLACES AT THE SAME TIME.
WHEN TALKING ABOUT ELECTRONS AS A FIELD EFFECT – THEY SAY THAT IT
SEEMS TO BE EVERY WHERE ALL AT ONCE!! NOW THESE ARE SIMPLE
OBSERVATIONS I.E. FACTS.

SO, ONE IS ENTITLED TO KNOW HOW, PLEASE.

THE ANSWER IS VERY SIMPLE – ALL ANUs ARE ONE AND THE SAME
EVERYWHERE.

I’VE GOT TO TELL YOU THAT SAI BABA – GOD WALKING THE PLANET – HAS
MANIFESTED HIMSELF PHYSICALLY IN 1400 PLACES SIMULTANEOUSLY AND LEFT
PHYSICAL PROOF THAT HE DID IT. HE REGULARLY BI-LOCATES AND IS FOUND TO
BE PHYSICALLY IN MORE THAN ONE PLACE AT THE SAME TIME.

NEXT: THEY TALKED ABOUT UNITY OF ALL THINGS AT THE QUANTUM LEVEL.
BUT, THEY NEVER POSTULATE AS TO HOW. WELL VIA THE ANU AND THE
AETHER IT IS VERY EASY TO SEE HOW THAT IS.

NEXT: THEY TALK ABOUT “THE COLLAPSE OF THE WAVE FUNCTION BETWEEN
THE QUANTUM AND THE OBSERVABLE WORLD – MEANING THAT YOU DON’T
FIND LARGE PHYSICAL THINGS EXISTING IN MULTIPLE PLACES AS DO THE
WAVE FORMS.

THEN, THEY STATE THAT INTENSION AFFECTS MATTER – AS SHOWN VERY
CLEARLY BY DR. EMOTO – BUT, THIS ALSO EXTENDS BACK TO THE ORIGINS OF
SUB-ATOMIC PHYSICS AND ATOM SMASHING – IN THE EARLY DAYS THEY
FOUND QUITE CLEARLY THAT A PHYSICIST’S EXPECTATION WOULD LITERALLY
CREATE THE RESULT IN THE ATOM SMASHER.

SO, THEY TAKE A LEAP AND STATE THAT ONE CREATES YOUR OWN REALITY.

REALLY, WE HAVE A COLLAPSE OF THE BRAIN FUNCTION.

LOOK – IF AT THE QUANTUM LEVEL WE SEE THAT THE PARTICLES MIRROR OFF AND CAN MANIFEST IN MANY MANY PLACES SIMULTANEOUSLY – SO WHY CAN'T THIS UNIVERSE DO THE SAME? SO, THE WAVE FUNCTION DOES NOT COLLAPSE – NOW DOES IT.

INTENSION AFFECTS MATTER – THAT IS OBVIOUS. BUT, TO EXTEND THAT TO: “ONE CREATES YOUR OWN REALITY.” NOW THAT IS A SERIOUS LEAP – THEY FINALLY TAKE ONE AND IT IS IN THE WRONG DIRECTION INTO THE WORLD OF METAPHYSICS.

AND THEY ATTEMPT TO BACK THIS UP WITH OBSERVED RECURRING CYCLES IN THE FUNCTIONING OF NEURO-PEPTIDES. MEANING THAT HUMANS DEVELOP ACQUIRED BEHAVIORS LIKE PAVLOV'S DOGS – AND, OUR BRAINS DEVELOP PATHWAYS VIA WHICH THE SAME THOUGHTS TRAVEL – THE RESULT BEING WE CREATE OUR REALITY VIA CYCLIC THINKING, WHICH IS REALLY THE WAY EVERYBODY LEARNS THINGS.

PLEASE – THIS ENTIRE UNIVERSE IS GOD'S DREAM – AND WE ARE GOING TO RECREATE IT VIA THINKING THE SAME THING OVER AND OVER AGAIN??? NEYT – NOPE – NADA – AIN'T GOING TO HAPPEN. THAT WE CAN DO THIS IN THE QUANTUM LEVEL – WHICH IS REALLY THE REALM OF THE ANU AND 2D IN NATURE – YES OUR THOUGHTS CAN AND DO HAVE AFFECT THERE. BUT, TO EXTEND THAT INTO THIS 3D UNIVERSE – NOPE.

LOOK, IF WE REALLY HAD DOMINION VIA THOUGHT OVER THIS REALM – THEN THINGS WOULD BE A WHOLE LOT DIFFERENT. THERE HAVE BEEN TIMES ON THIS PLANET WHEN ALMOST EVERYBODY WAS VERY RELIGIOUS AND SINGING WENT ON 24/7 IN THE CATHEDRALS. BUT, WE STILL HAVE WARS.

USING INTENTION TO MAKE CHANGES IN THIS 3D REALM DOES HAPPEN – BUT, IT TAKES A NUMBER OF ENTITIES FOCUSING ON ONE RESULT AND THEN IT COMES ABOUT. THERE ARE LOTS OF EXAMPLES – THESE ARE OBVIOUS: THE SICKLE CELL ADAPTATION (SAVED MILLIONS FROM MALARIA); NOW THERE IS A WHOLE POPULATION THAT IS IMMUNE TO AIDS; THE TRANSCENDENTAL MEDITATORS CHANGING CRIME RATES; THE 100th MONKEY EFFECT; AND EVOLUTION IN GENERAL – WHICH OCCURS VIA GOD SIMPLY HAVING A NEW IDEA – INCREMENTAL ADVANCES – THAT'S WHAT EVOLUTION IS I.E. A PROGRESSION OF NEW IDEAS – SOME OF WHICH ARE QUANTUM LEAPS – LIKE THE HUMAN SPECIES.

NOW, SAI BABA IS GOD WALKING THE PLANET – IT IS REPORTED MONTHLY ON JAPANESE TV – THEY ARE ALLOWED TO DO DOCUMENTARIES ABOUT HIM – THE WESTERN MEDIA IS NOT ALLOWED.

ALL DAY EVERYDAY, BABA DEMONSTRATES ALL OF THE WEIRDNESS ATTRIBUTED TO THE QUANTUM I.E. SHOWING UP PHYSICALLY IN NUMEROUS LOCATIONS AND MANIFESTING PEOPLE'S BELIEFS FOR THEM – INSTANTLY. PLUS, HE DOES MIRACULOUS THINGS EVERYDAY I.E. HEALINGS, MANIFESTATIONS OF OBJECTS, HIS HEALING ASH MANIFESTS 24/7 ON HIS PHOTOS IN LOCATIONS ALL OVER THIS PLANET ETC.

HE HAS DONE THIS NOW FOR ABOUT 160 YEARS AS SAI BABA OF SHIRIDI AND NOW IN THIS INCARNATION AS SATHYA SAI BABA – HIS MESSAGE IS ONLY THAT OF LOVE. NOW, HE COULD CHANGE THIS PLANET IN A MICRO-INSTANT – BUT, HE DOESN'T – YOU KNOW WHY – KARMA – HE DOES NOT

WANT TO BREAK THE RULE "I AM THAT, I AM" OR "LIKE ATTRACTS LIKE" – AND HE SAYS AS MUCH. SO, IT IS OBVIOUS THAT EVEN GOD IS IN HARMONY WITH THE RULE WHICH IS WHY ALL OF THIS CAME ABOUT – FIRST THE RULE, THEN CONSCIOUSNESS, THEN THE AETHER, THEN THE ANU – IN THAT ORDER. SO, GOD PROCEEDS IN INCREMENTAL ADVANCES – EVOLUTION – NEW IDEAS MANIFESTED IN A VERY STRAIGHT FORWARD MANNER THAT IS OBVIOUS.

GOD CONTINUALLY SHOWS HERSELF SO THAT WE MAY ASPIRE TO JOIN WITH HER – EVERY RELIGIOUS SCRIPTURE ON THIS PLANET SAYS THAT WE ARE ALL TO BECOME LIKE MOSES, ZORASTER, BUDDHA, JESUS, MOHAMED OR SAI BABA. AND NOW WE HAVE THE QUANTUM CLEARLY SHOWING US THAT INTENTION DOES CREATE – SEEMINGLY MIRACULOUSLY. ALL I CAN SAY IS: WAKE UP, PLEASE.

OH YES, BRAHMA/SPACE – THE FIRST FORM OF GOD IS FEMALE – THIS UNIVERSE WAS BORN INSIDER HER – SHE SUPPORTS THE MANIFESTATION OF ALL THINGS I.E. NURTURES THEM – SHE IS VERY TOLERATE (THE STUPID SHIT THAT IS ALLOWED TO MANIFEST ON THIS PLANET BEARS THAT OUT). I ASSURE YOU – THE FIRST FORM OF GOD IS FEMALE – NOT GENDERLESS.

IN FAVOR OF METAPHYSICS, I WILL SAY THIS – PRECOGNITION – IS A FACT – THUS, OUR SOUL DOES KNOW WHAT IS GOING TO HAPPEN TO IT BEFORE IT GETS BORN AND IN THAT SENSE WE VERY MUCH CO-CREATE WITH GOD.

A NEW SERIES OF MOVIES SHOWING THE TRUTH NEEDS TO BE CREATED – THAT SHOULD BE FUN AND IT IS A SOLID WAY OF ESTABLISHING A REASON TO LET LOVE WIN.

BLESSINGS,