

M-101-26-02R

Black-Topper® Centennial Series Asphalt Distributor

SUPPLEMENTAL PARTS MANUAL

HOW TO ORDER PARTS

To assure prompt delivery when ordering parts, please furnish the following information: **1)** Complete name and address of consignee. **2)** Method of shipment preferred. **3)** Is shipment to be prepaid or collect? **4)** Serial numbers of units to which parts apply. **5)** Complete part numbers and descriptions. **6)** Any special instructions. Part numbers beginning with 9250000 are category numbers and must include descriptive term to complete the order (such as, length, color, etc.). These items when listed in the parts manual will indicate what information must be included.

Specify unit serial number when ordering parts!

WARRANTY

E.D. Etnyre & Co. warrants to the original Purchaser, it's new product to be free from defects in material and workmanship for a period of twelve (12) months after date of delivery to original Purchaser. The obligation of the Company is limited to repairing or replacing any defective part returned to the Company and will not be responsible for consequential damages or any further loss by reason of such defect.

The company excludes all implied warranties of merchantability and fitness for a particular purpose. There are no warranties, express or implied, which extend beyond the description of the goods contained in this contract.

This warranty does not obligate the Company to bear the cost of machine transportation in connection with the replacement or repair of defective parts, nor does it guarantee repair or replacement of any parts on which unauthorized repairs or alterations have been made or for components not manufactured by the Company except to the extent of the warranty given by the original Manufacturer.

This warranty does not apply to:

- (1) Normal start-up services, normal maintenance services or adjustments usually performed by the selling dealer, factory service representative or customer personnel.
- (2) Any product manufactured by E.D. Etnyre & Co. purchased or subjected to rental use.
- (3) Any product or part thereof which shows improper operation, improper maintenance, abuse, neglect, damage or modification after shipment from factory.
- (4) Any product or part thereof damaged or lost in shipment. Inspection for damage should be made before acceptance or signing any delivery documents releasing responsibility of the delivering carrier.

This warranty and foregoing obligations are in lieu of all other obligations and liabilities including negligence and all warranties of merchantability or otherwise, express or implied in fact or by law.



E. D. ETNYRE & CO. , Oregon, Illinois 61061-9778

1333 S. Daysville Road Phone: 815/732-2116 or 800/995-2116

Fax: Main Office 815-732-4277 Fax: Sales and Service 800-732-7400 Fax: Parts Dept Only 800-521-1107

E Mail: sales@etnyre.com Web Site: www.etnyre.com

Table of Contents

HOW TO ORDER PARTS	1
Reporting Safety Defects	4
General Identification	5
General Identification	6
Warning & Instruction Plates	7
Air Supply	8
Control Panel & Stand	10
4 Way Valve Asm And Controls	11
Circulating System - Small Strainer Box	12
Circulating System - Large Strainer Box	14
Suckback System	16
Asphalt Pump Assembly	17
Trailer Distributor Hydraulic Hoses	18
Hydraulic Pump Drive - Crankshaft Driven 42 Series Pump	19
Hydrostatic Drive System - PTO Driven 42 Series Pump	20
Hydrostatic Drive System - PTO Driven 90 Series Pump	22
Planetary Gearbox - Asphalt Pump	24
Drive Line - PTO To Hydraulic Pump	25
Units with 42 Series Hydraulic Pumps	25
Drive Line - PTO To Hydraulic Pump - Gmc Trucks 42 Series and 90 Series Hydraulic Pumps	26
Heavy Duty Bar Raise	27
6 Station Manifold Assembly	28
Schematic - 6603033 Hydraulic Manifold Block	29
Ladder Assembly	30
Tool Soak & Section Box Assemblies	31

Reporting Safety Defects

If you believe that your vehicle has a defect which could cause a crash, injury, or death, you should immediately inform the National Highway Traffic Safety Administration (NHTSA) in addition to notifying E.D. Etnyre & Co.

If NHTSA receives similar complaints, it may open an investigation. If it finds a safety defect exists in a group of vehicles, it may order a recall and remedy campaign. However, NHTSA cannot become involved in individual problems between you, your dealer, or E.D. Etnyre & Co.

To contact NHTSA, you may call the Auto Safety Hotline too-free at 1-800-424-9393 (or 366-0123 in the Washington, D.C. area). Or, you may write to: U.S. Department of Transportation, Washington, D.C. 20696. You may also obtain other information about motor vehicle safety from the Auto Safety Hotline.

E.D. Etnyre & Co., Oregon, Illinois 61061, Phone Area Code 815/732-2116, Cable Address "EDECO".CALIFORNIA



WARNING

Fluoroelastomer handling

Some "O" rings and seals used in this vehicle are made from fluoroelastomers. When used under design conditions, fluoroelastomers do not require special handling. However, when fluoroelastomers are heated to temperatures beyond their design temperature (around 600 degrees Fahrenheit), decomposition may occur with the formation of hydrofluoric acid. Hydrofluoric acid can be extremely corrosive to human tissue if not handled properly.

A degraded seal may appear as a charred or black sticky mass. Do not touch either the seal or the surrounding equipment without wearing neoprene or PVC gloves if degradation is suspected. Wash parts and equipment with 10% lime water (calcium hydroxide solution) to neutralize any hydrofluoric acid.

If contact with the skin occurs, wash the affected areas immediately with water. Then rub a 2.5 calcium gluconate gel into the skin until there is no further irritation, while seeking prompt medical attention.

Note to physicians: For advice or treatment of HF Burns, call the DuPont Medical Emergency Number 1-800-441-3637.

This manual covers standard features and options. If your unit incorporates custom features, some of the information contained in this manual may not apply. If you have any questions regarding this manual or your unit, contact your dealer or the E. D. Etnyre Service Department at 1-800-995-2116

PROPOSITION 65 WARNING

Diesel Engine exhaust and some of its constituents are known to the State of California to cause cancer, birth defects, and other reproductive harm.

Please note this warning and remember -

Always start and operate the engine in a well-ventilated area;

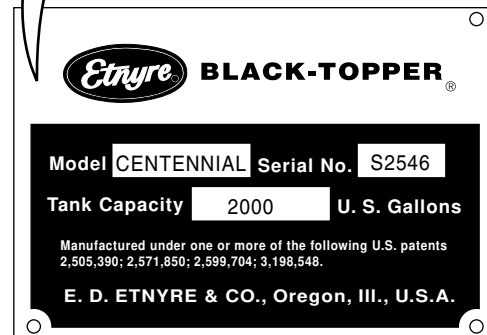
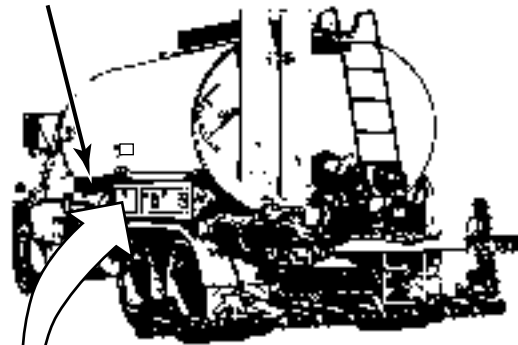
If in an enclosed area, vent the exhaust to the outside;

Do not modify or tamper with the exhaust system.

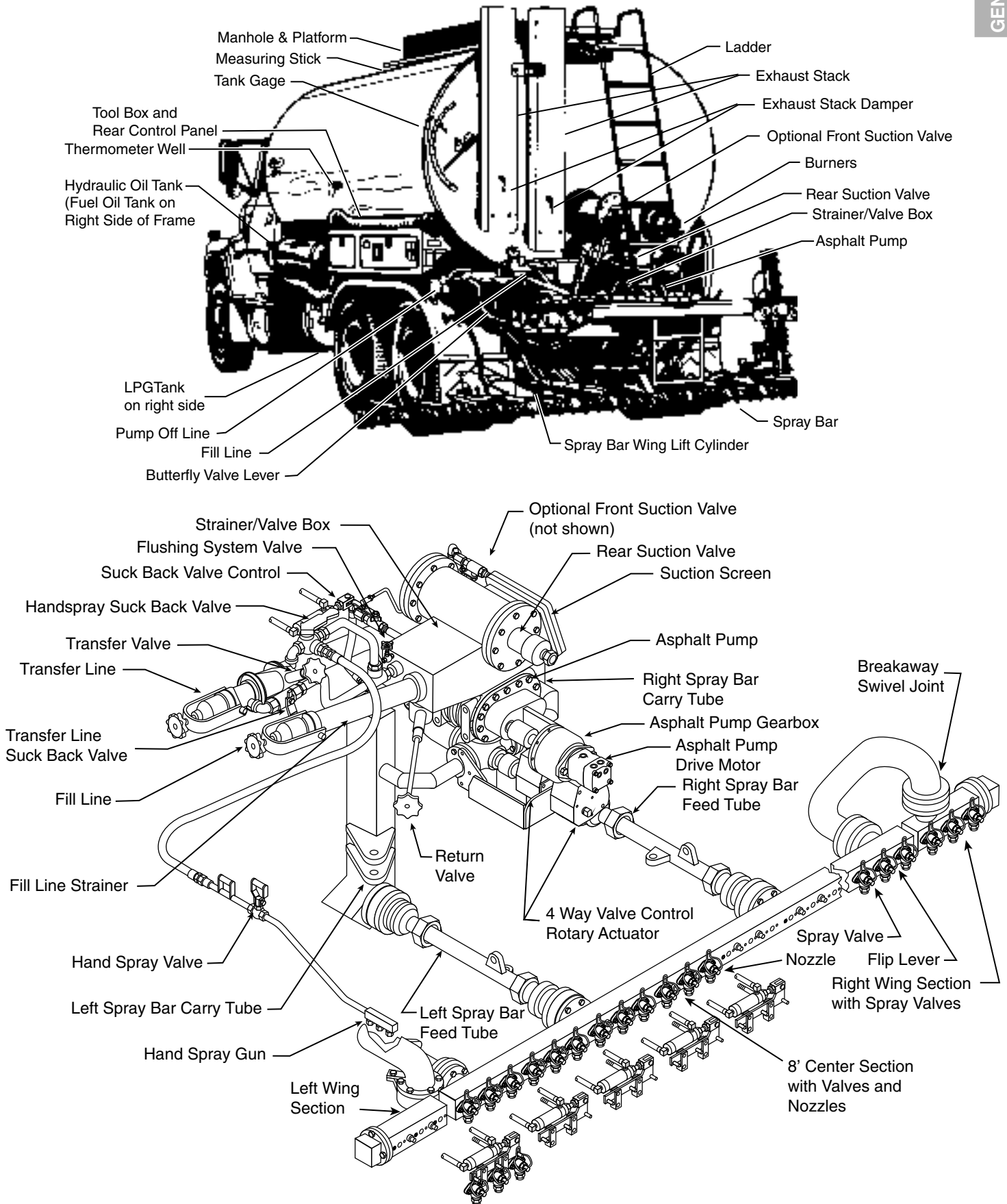
Serial Number Plate Location

The Serial Number Plate is a brass plate located on the left side of the vehicle toolbox. Generally, the serial number has a letter prefix followed by four numbers.

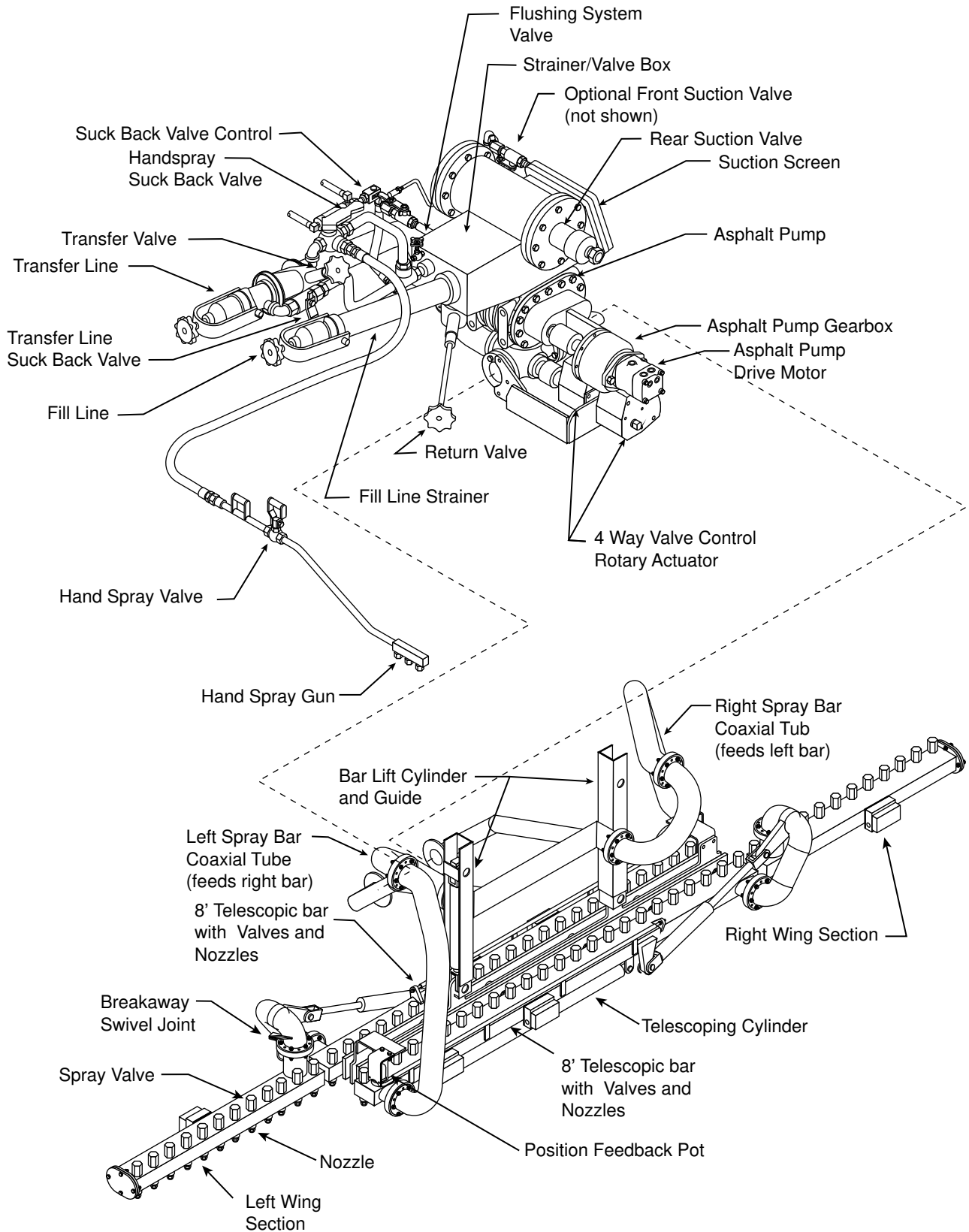
The unit serial number is also stamped on the left front tank mounting leg.



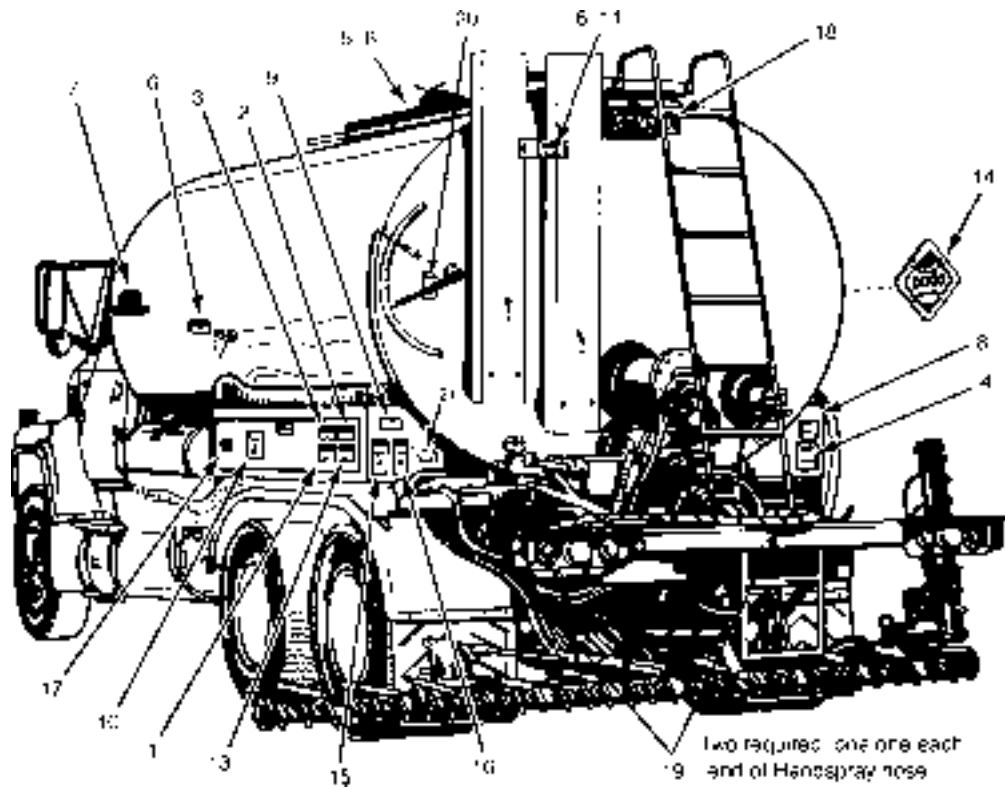
General Identification






General Identification



Warning & Instruction Plates

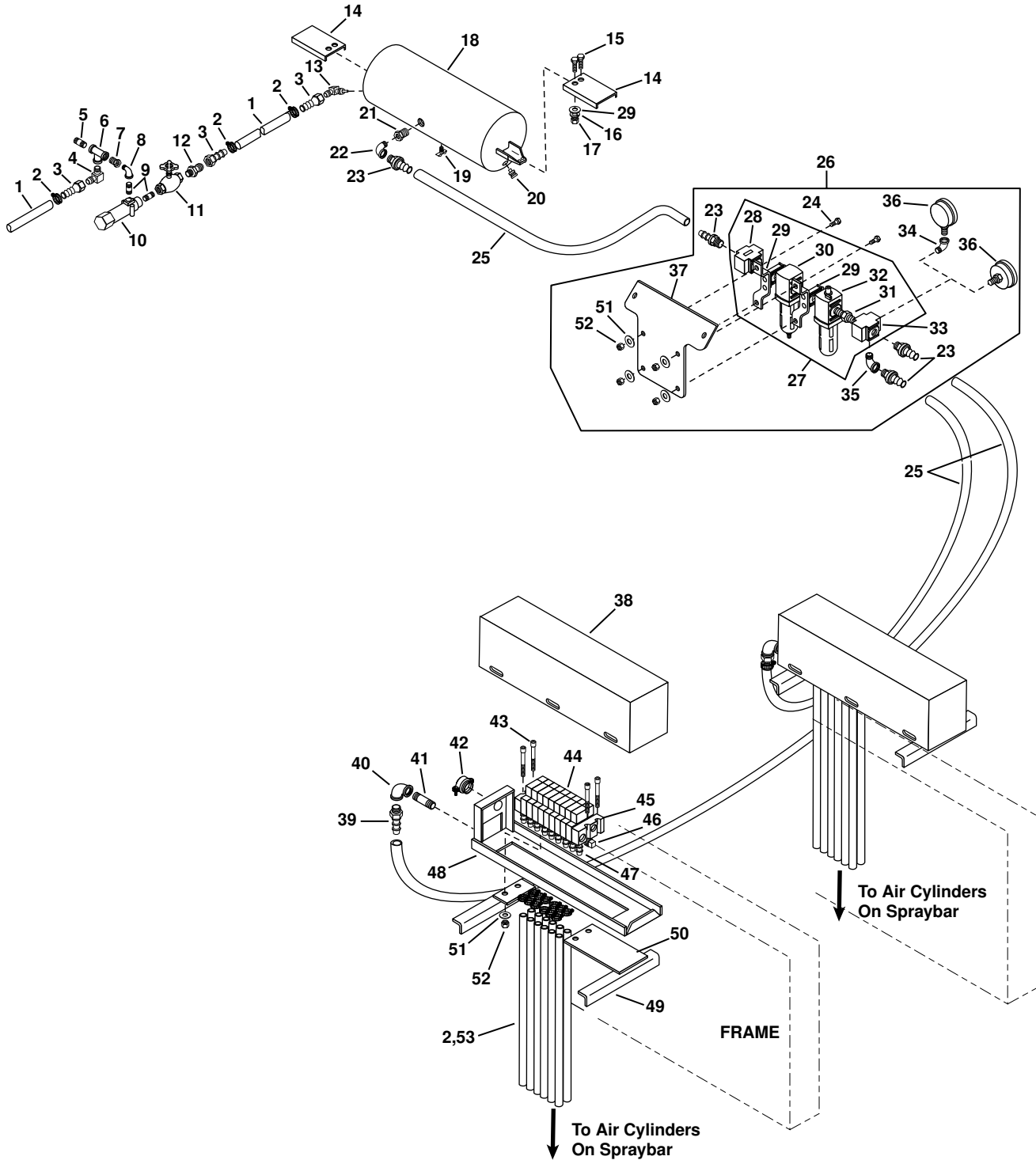


-  For operator safety and possible liability protection, all Safety and Instruction Plates should remain in place and be legible.
-  Should a plate be removed, lost, or become illegible, reorder and replace it immediately.
-  If plates become difficult to read because of material coating the surface, clean with solvent.

REF	PART NO.	QTY	DESCRIPTION	REF	PART NO.	QTY	DESCRIPTION
1	3390683	1	Plate-CAUTION, Shields In Place	13	3390678	2	Plate-WARNING, Read Manuals
2	3390681	1	Plate-CAUTION, Remain Clear	14	6320272	AR	Placard System (Optional)
3	3390682	2	Plate-CAUTION, Before Starting	15	3390636	1	Plate-WARNING, Flues Covered
4	3390686	1	Plate-WARNING, Burner, General	16	3390637	1	Plate-WARNING, Asphalt Grades
5	3390679	1	Plate-WARNING, Manhole	17	3390655	1	Plate-Name, Distributor, Brass
6	3390684	3	Plate-CAUTION, Hot Surface	18	3390149	1	Plate-Name, ETNYRE
7	3390696	2	Decal-BLACKTOPPER Centennial	19	3390591	1	Tag-CAUTION, Handspray Hose
8	3390540	1	Plate-Directions, LPG Burner	20	3390659	1	Decal-WARNING, GVWR
	3390670	1	Plate-Directions, Ele. Beckett Burner	21	3390669	1	Decal-Handspray Operation
9	3390680	1	Plate-WARNING, Fill Cap				
10	3390685	1	Plate-WARNING, Safety, General				
11	3390592	1	Bracket Asm-CAUTION, Hot Surface				
12	6100139	AR	Pop Rivet, 0.12 (for mounting plates)				

Air Supply

Spraybar Controlled in 1' Increments
 Frame Mounted Air Valves



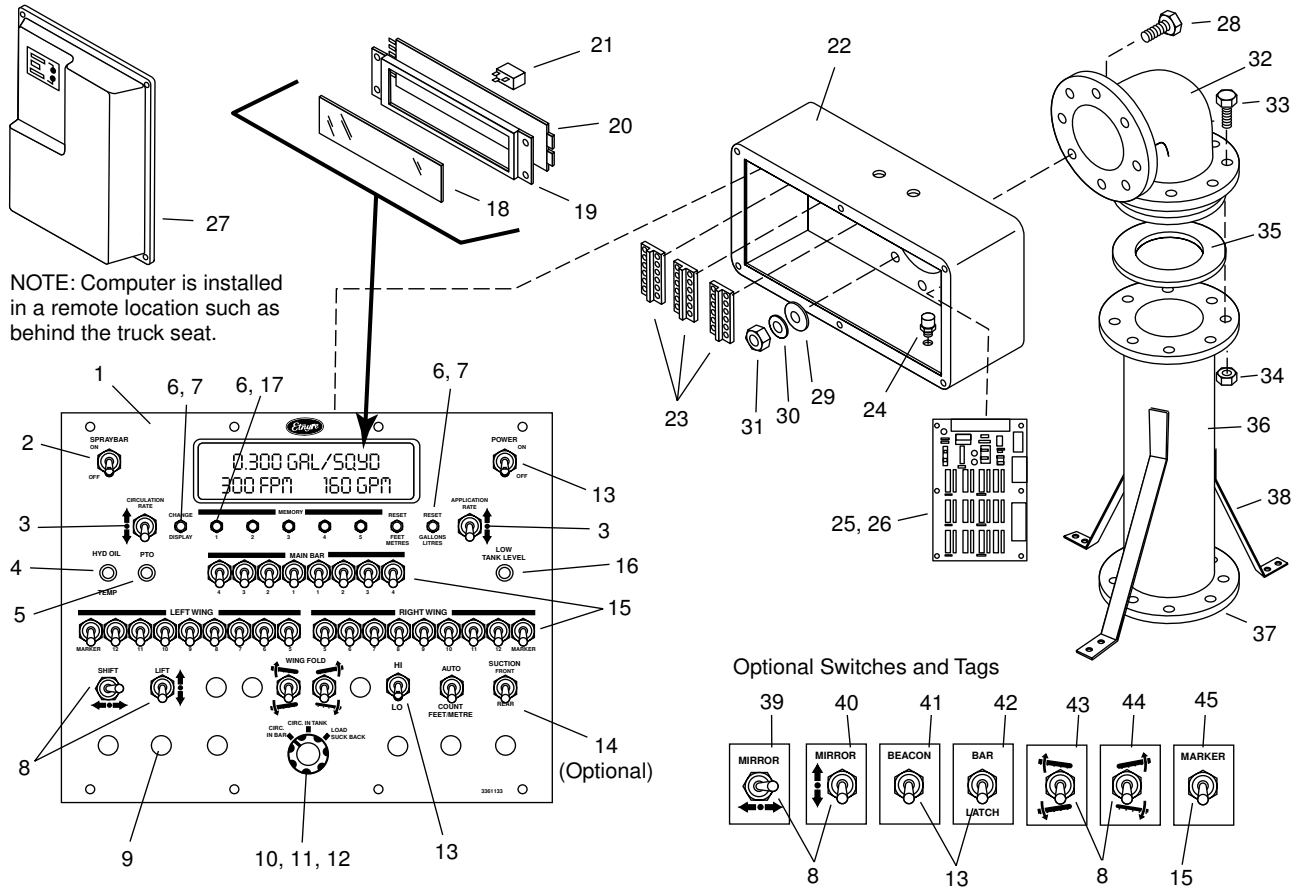
Air Supply
Spraybar Controlled in 1' Increments
Frame Mounted Air Valves

REF	PART NO.	QTY	DESCRIPTION	REF	PART NO.	QTY	DESCRIPTION
1	6600324	AR	Hose-Hyd,0.38,300 WP/FT	7215169	1	Kit-Repair Spl Mac Vlv 6601455	
2	6001005	AR	Clamp-Hose,Screw Type,M5	7530034	1	Sol & Pilot Asm for 6601455	
3	6600306	3	Hose End-06 x 06FSX,ST,LPSP	45 6601456	2	Plate-End,Spraybar Cont Valve	
4	6602788	1	Elbow-Hyd,90,06MJ-06MP	6601779	1	Kit-End Block,1/4,Air Valve	
5	0109421	1	Nipple-PP,Sch 40,0.38 x 1.50,PN	46 0219191	2	Plug-Pipe,SqHd,0.38NPT, PN	
6	0120280	1	Tee-PP,0.38NPT,PD	47 6602575	AR	Hose End,3/16 Hose x 1/4MNPT,ST	
7	0119931	1	Bushing-PP,0.38 x 0.25NPT,PN	48 3361233	2	Air Valve Mtg. Brkt Asm S2000	
8	0105423	2	Elbow-PP,90,ST,0.25NPT,PN	49 3361227	4	Angle-Mtg. Air Vlv Box	
9	0105407	2	Nipple-PP,Sch 40,0.25 x 1.50,PN	50 3360832	2	Support Plate-Air Val Mount Br	
10	6600304	1	Valve-Pressure Regulator	51 0120386	12	Washer-Flat,0.25A(0.31 x 0.73),PD	
11	6600303	1	Valve-Globe,Stght,0.25 Disc	52 9413946	12	Nut-Hex,Lock,0.25NC,EA,PD	
12	0118750	1	Adapter-Auto,ST,04MP-06MS	53 6309255	AR	Hose-Fuel,0.19 ID/FT	
13	6200179	1	Elbow-Flared Tube,Leggett 10F33				
14	3361119	2	Bracket-Mtg. Air Resv,Distr,Long				AR - AS REQUIRED
	3361163	2	Bracket-Mtg. Air Resv,Distr,Short				
15	0120918	6	Screw-Hex,0.38NC x 1.50,GR2,PD				
16	0120382	6	Washer-Lock,0.38,Spring,PD				
17	0120377	6	Nut-Hex,0.38NC,PD				
18	6450357	1	Reservoir-Air 9.69 x 22.5				
19	6600162	2	Cock-Drain,0.25 In. Spanco Brs.				
20	6600299	1	Vlv-Safety,Midland 110715				
21	0144034	1	Bushing-PP,0.75 x 0.50NPT,PN				
22	0108686	3	Elbow-PP, 90,ST,0.50NPT,PN				
23	6600663	4	Hose-End,08 x 08MP,ST,LPSP				
24	0121887	4	Screw-Hex,0.25NC x 0.75,GR2,PD				
25	6600662	AR	Hose-Push Lok,Parker 801-8				
26	3361269	1	Kit-Filter/Lub. Asm-Wilkerson				
27	6602818	1	Filter/Lub. Wilkerson C18-04-EDE				
28	7050060	1	Safety Lockout Valve, 1/2"				
29	7050062	2	T-Bracket/Joiner				
30	7050059	1	Filter W/Auto Drain, 1/2"				
	7050067	1	Filter				
	7050065	1	Bowl/Guard				
	7050066	1	O Ring				
31	7050321	1	Joiner				
32	7050058	1	Lubricator,1/2"				
	7050064	1	Bowl/Guard				
	7050066	1	O Ring				
33	7050320	1	Diverter Block, 1/2"				
34	0144112	1	Elbow-Pipe,90,ST,0.25NPT,PD 35				
35	0127961	1	Elbow-Pipe,90,ST,0.50NPT,PD				
36	6600168	1	Gauge-Pres,2.5 In.,150 PSIG,Bott Port				
	6602992	1	Gauge-Pres,2.5 In.,150 PSIG,Back Port				
37	3361263	1	Bracket-Mtg. Modular Filter/Lub.				
38	3360859	2	Lid-Air Valve Mounting Bracket				
39	6602128	2	Hose End-08 x 06MP, ST,LPSP				
40	0119097	2	Elbow-PP,90,0.38NPT,PN				
41	0120128	2	Nipple-PP,Sch 40,0.38 x 3.50,PN				
42	6701510	2	Connector-Romex,0.75 Trac				
43	0138207	8	Cap-Screw-Hex,Skt. 1/4-20 x 2 1/4				
44	6601455	AR	Valve-Air,2 Pos,4 Way,12VDC, Mac				
	7420231	1	Gasket-Stacking,Air Valve,Mac				

CONTROLS

Control Panel & Stand

1' Spray Bar Controls with S2X Computerized Application Rate Control

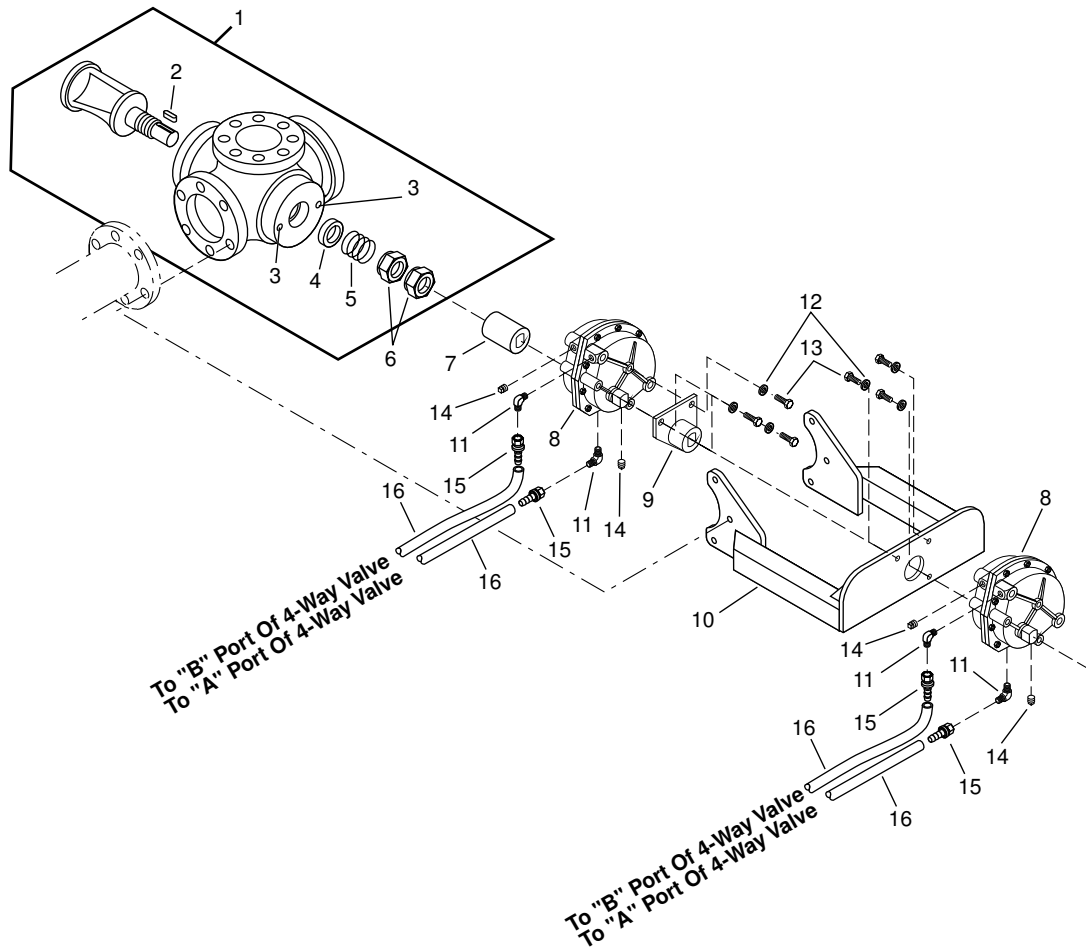


CONTROLS

REF	PART NO.	QTY	DESCRIPTION	REF	PART NO.	QTY	DESCRIPTION
1	3361133	1	Face Plate(Switches & Lights NOT Incl.)	24	6702094	1	Circuit Breaker-15 AMP
	7520019	1	Standard Box Complete (Specify Serial No. for panels with other Options)	25	6702192	1	Interface Board
2	6701976	1	Switch-Toggle, 3PDT, 2 POS	26	6701980	4	Spacer
3	6700161	2	Switch-Toggle, SPDT, MOM	27	6703077	1	Controller
4	6702075	1	Red Light - 12V	28	0120233	8	Screw, 0.38NC x 1.00
5	6702077	1	Green Light	29	0120388	8	Flat Washer, 0.38
6	6702198	8	Push Button Switch, SPDT, ON-MOM	30	0120382	8	Lock Washer, 0.38
7	6702196	3	Red Cap	31	0120377	8	Nut, 0.38NC
8	6701897	4	Toggle Switch, DPDT, 3 Pos, MOM	32	3321307	1	Elbow Asm
9	6702199	AR	Button Plug, 0.50	33	0121913	4	Screw, 0.25NC x 1.25
10	6702188	1	Rotary Switch, 3 Pol, 3 Pos	34	9413946	4	Lock Nut, 0.25NC
11	6701907	1	Control Knob	35	3321306	1	Gasket
12	6702033	1	Resister-100 OHM, 0.5 W, 5 Per	36	3321308	1	Tube Asm
13	6700255	2	Switch-Toggle, 20 AMP, Single Pole	37	3311642	1	Flange
14	3160005	1	Switch-Toggle, SPDT, 2 Pos	38	3321031	3	Mounting Leg
15	6701974	16	Switch-Toggle, PDT, Dry Circuit	39	3361106	1	Tag-Mirror Lt/Rt
16	6702076	1	Amber Light	40	3361107	1	Tag-Mirror Up/Down
17	6702197	5	White Cap	41	3361108	1	Tag-Beacon
18	3361148	1	Window	42	3361109	1	Tag-Bar Latch
19	6702193	1	Display-LCD	43	3361110	1	Tag-Left Wing Fold
20	6702194	1	Driver Board	44	3361111	1	Tag-Right Wing Fold
21	6702195	1	Inverter	45	3361112	1	Tag-Marker
22	3370249	1	Control Panel Enclosure				
23	6702072	3	Terminal Strip				

AR = As Required

4 Way Valve Asm And Controls



CIRCULATION SYSTEM

REF	PART NO.	QTY	DESCRIPTION	REF	PART NO.	QTY	DESCRIPTION
1	3341441	1	4 Way Valve Asm				
2	6000224	1	Key-0.31 x 0.31CR x 1.00				
3	0125947	2	0.12 Slotted Pipe Plug				
4	3340029	4	Packing				
5	3341464	1	Spring				
6	3341187	2	Stem Nut				
7	3361292	1	Coupling-Rotary Actuator				
8	6603023	2	Actuator-Rotary,Vane,Air				
9	3361291	1	Coupling-Rotary Actuator				
10	3311750	1	Frame-Rotary Actuator				
11	0118755	4	Elbow-Auto,90,04MP-06MS				
12	0120382	6	Washer-Lock,3/8,Spring,PD				
13	6001062	6	Screw-Hex,3/8NC x 1,Gr 8,PD				
14	0219189	2	Plug-Pipe,SqHd,1/4NPT,PN				
15	6600306	4	Hose End-06 x 06FSX,St,LPSP				
16	6600324	AR	Hose-3/8,Air				
AR = As Required							

Circulating System - Small Strainer Box

Front Suction Valve
See "SUCTION VALVE ASSEMBLIES" for parts breakdown

Optional Right Side Fill Lines

OPTIONAL ID Lable

See "SUCKBACK SYSTEM" for parts breakdown

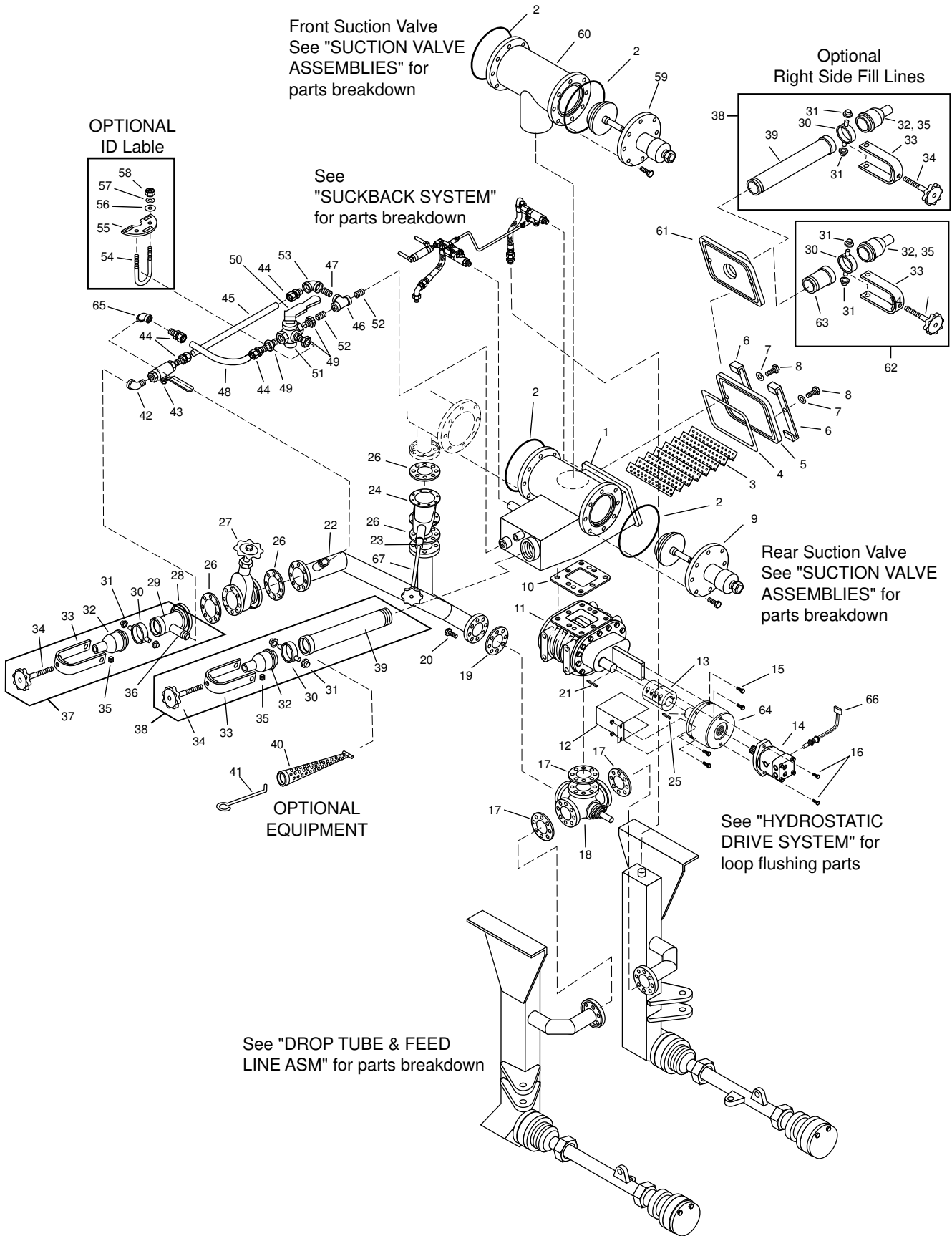
Rear Suction Valve
See "SUCTION VALVE ASSEMBLIES" for parts breakdown

OPTIONAL EQUIPMENT

See "HYDROSTATIC DRIVE SYSTEM" for loop flushing parts

See "DROP TUBE & FEED LINE ASM" for parts breakdown

CIRCULATION SYSTEM



Circulating System - Small Strainer Box

REF	PART NO.	QTY	DESCRIPTION	REF	PART NO.	QTY	DESCRIPTION
1	3341653	1	Strainer Box Assembly	50	3380695	1	Handle-Valve, H.S., OFFSET
2	---	AR	Gasket Maker-LOCTITE 510	51	6602404	1	Valve-Plug, 1.00, 3 Way, 2 Port
3	3341442	1	Strainer Asm	52	0125987	1	Nipple-Sch 40, .75 x 1.75, PN
4	7230359	1	Packing, 0.25 Sq.	53	0189777	1	Elbow-Pipe, 90, .75 NPT, PN
5	3341965	1	Lid	54	3560170	1	Clip, 2.00 x 2.00 x 0.25, 4.00 Lg.
6	3341964	2	Clamp Bar Asm	55	S1283AD	1	Label-3 Way H.S. Vlv
7	9411727	2	Nut-Hex, Lock, 0.50NC, EA, PD	56	0120386	2	Washer-Flat, 0.25A(0.31 x 0.73)PD
8	0180175	2	Screw-Hex, 0.50NC x 1.25, GR5, PD	57	0120380	2	Washer-Lock, 0.25, Spring, PD
9	3341412	1	Rear Suction Valve Mechanism	58	0120375	2	Nut-Hex, 0.25NC, PD
10	3352222	1	Gasket-Pump, Strainer Box	59	3341421	1	Valve Mechanism-4" Front Suction
11	3341899	1	Pump Asm - Asphalt	60	3301209	1	Can Asm-4" Front Suction Valve
12	3390716	1	Guard	61	S1761AK	1	Lid Asm-Strainer Box R+L Fill
13	6445090	1	Coupling	62	3340039	1	Filling Line Asm
14	6603157	1	Motor-42 Series	63	3340043	1	Pipe Asm-Tank Car
	6603173	1	Motor-90 Series	64	6410079	1	Gearbox-Planetary
15	6001265	2	Screw-Hex,5/16NC x 1,Gr 8	65	0119095	1	Elbow-Pipe, 45, .75 NPT, PN
16	0180175	2	Screw-Hex,1/2NC x 1 1/4,Gr 5	66	3370323	1	Speed Pickup
17	3340515	3	Gasket-Flange	67	3341911	1	Handwheel Asm-Gate Valve
18	3341441	1	4 Way Valve Assembly				
19	3340512	1	Gasket-Return Line				
20	0180124	12	Screw-Hex, 0.38NC x 1.25, GR5, PD				
21	3361154	1	Key- 3/8 x 2 7/8				
22	3341480	1	Line Asm				
23	6445089	1	Coupling-Shaft,Plain,5/8				
24	3341915	1	Valve -Gate,Modified				
25	6000274	1	Key- 3/8 x 2 7/8				
26	6000071	4	Gasket-3 Flange, AV10233B, ASB				
27	6600045	1	Vlv-Gate, G1013, 3 Allegney Vlv				
	7420250	1	Gland Follower				
	7420251	1	Packing Set				
	7420252	1	Gland Washer				
28	6000068	1	Flange-20056A, 3 Flued Alegny Cplg				
29	3341481	1	Pipe Asm - Fill Line				
30	3341078	2	Ring Asm-Clamping Transfer Vlv				
	9413946	1	Nut-Hex, Lock, 0.25NC, EA, PD				
	0121913	1	Screw-Hex, 0.25NC x 1.25, GR2, PD				
31	6001056	4	Cap-Retainer, 0.5 Dia Stud				
32	3380388	2	Cap Asm-Fill Line				
33	3340041	2	Clamp Asm-3 Hose Conn.				
34	3340033	2	Clamp Asm-Screw, Filling Line				
35	0219189	1	Plug-Pipe, SqHd, 0.25NPT, PN				
36	3301195	1	Nipple-Pump Off Line				
37	3341482	1	Pipe Asm - Pump Off & Handspray				
38	3301200	1	Fill Line Asm				
39	3301199	1	Tank Car Pipe Asm				
40	3340004	1	Strainer Asm (Optional)				
41	3390030	1	Hook-Intake Strainer				
42	0141621	1	Elbow-Pipe, 90, ST, 0.75NPT, PN				
43	6602237	1	Valve-Ball, 0.75, Bronze				
44	6600852	4	Adapter-ARBK, ST, 12MP-12MT				
45	3341476	1	"S" Tube, Suckback				
46	0125988	1	Tee-Pipe, .75 NPT, PN				
47	0144613	1	Nipple-Sch 40, 0.75 x 1.38 CL, PN				
48	3341475	1	Tube-Suckback				
49	0128003	3	Bushing-Pipe, 1.00 x 0.75NPT, PN				

CIRCULATION SYSTEM

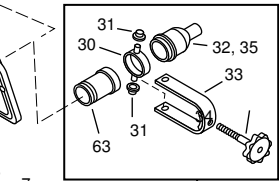
Circulating System - Large Strainer Box

Front Suction Valve
See "SUCTION VALVE ASSEMBLIES" for parts breakdown

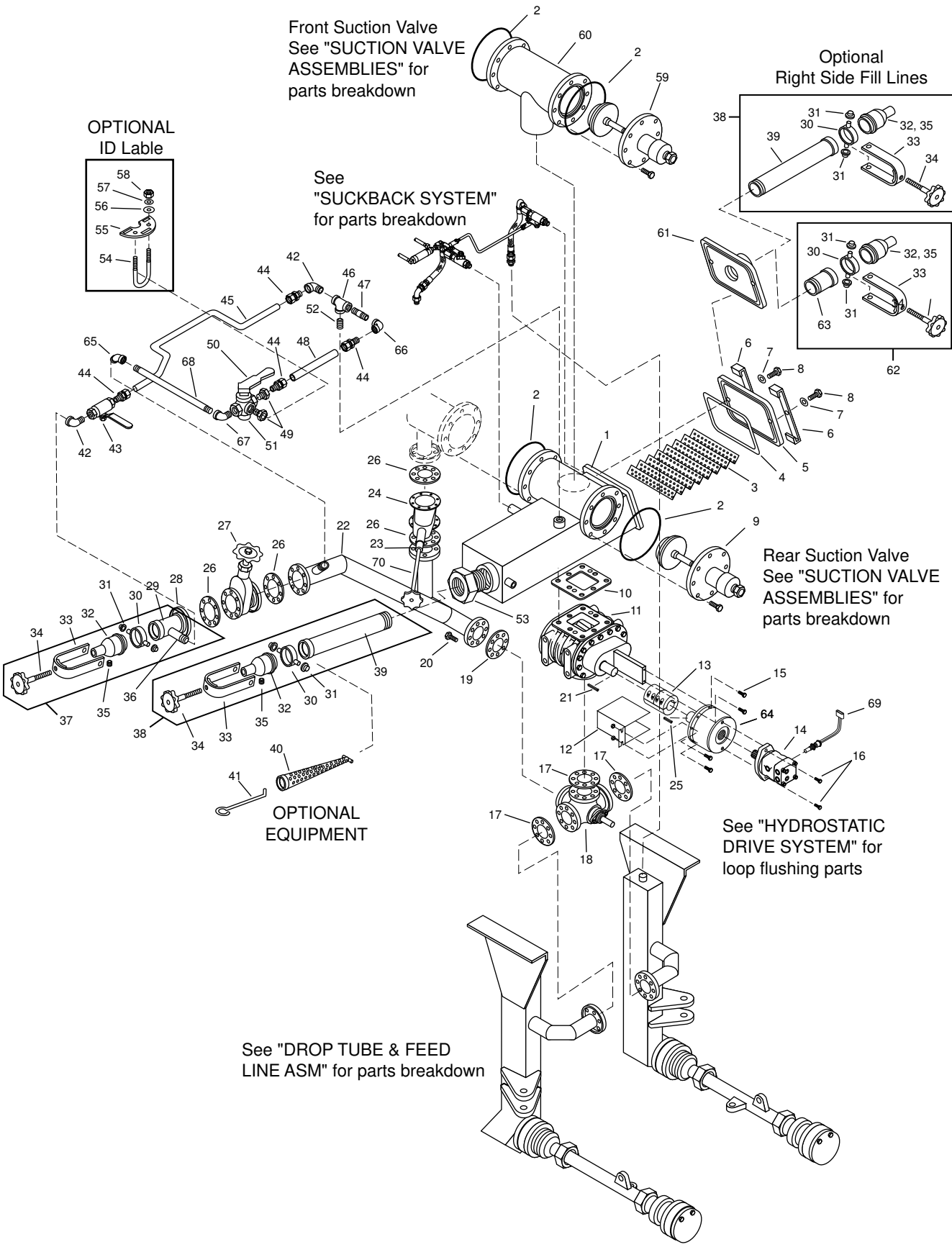
Optional Right Side Fill Lines

OPTIONAL ID Lable

See "SUCKBACK SYSTEM" for parts breakdown



CIRCULATION SYSTEM



Rear Suction Valve
See "SUCTION VALVE ASSEMBLIES" for parts breakdown

OPTIONAL EQUIPMENT

See "HYDROSTATIC DRIVE SYSTEM" for loop flushing parts

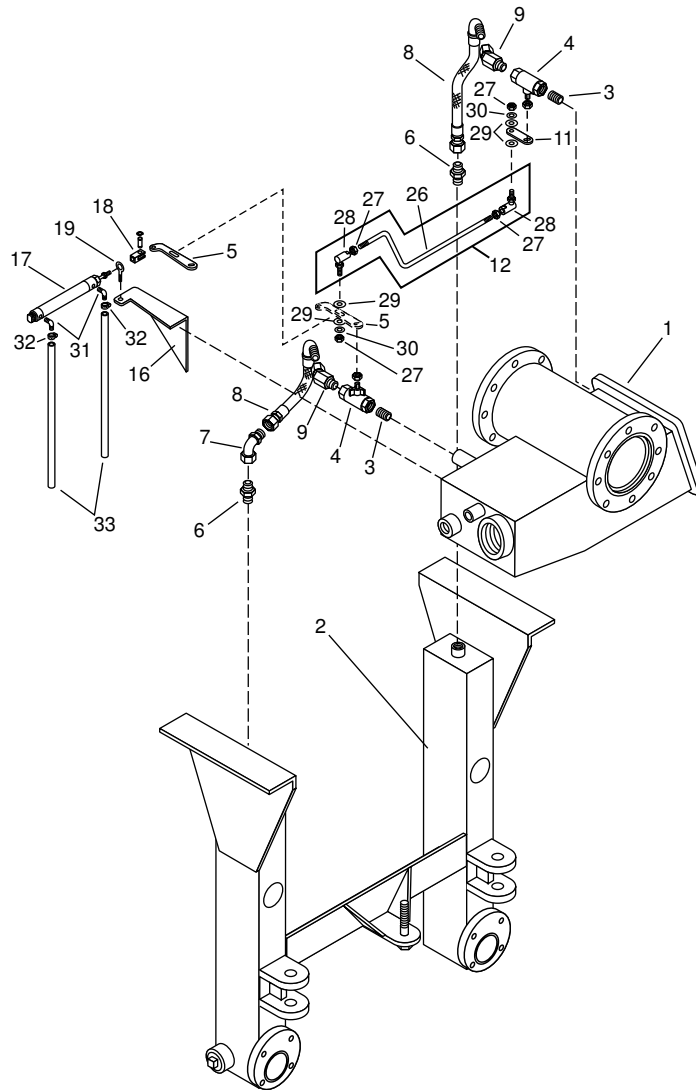
See "DROP TUBE & FEED LINE ASM" for parts breakdown

Circulating System - Large Strainer Box

REF	PART NO.	QTY	DESCRIPTION	REF	PART NO.	QTY	DESCRIPTION
1	3341816	1	Strainer Box Assembly	50	3380695	1	Handle-Valve, H.S., OFFSET
2		AR	Gasket Maker-LOCTITE 510	51	6602404	1	Valve-Plug, 1.00, 3 Way, 2 Port
3	3341442	1	Strainer Asm	52	6200658	1	Nipple-Sch 40, .75 x Close, PN
4	7230359	1	Packing, 0.25 Sq.	53	6200044	1	Bushing-Pipe, 4.00 x 3.00 NPT, PN
5	3341965	1	Lid	54	3560170	1	Clip, 2.00 x 2.00 x 0.25, 4.00 Lg.
6	3341964	2	Clamp Bar Asm	55	S1283AD	1	Label-3 Way H.S. Vlv
7	9411727	2	Nut-Hex, Lock, 0.50NC, EA, PD	56	0120386	2	Washer-Flat, 0.25A(0.31 x 0.73)PD
8	0180175	2	Screw-Hex, 0.50NC x 1.25, GR5, PD	57	0120380	2	Washer-Lock, 0.25, Spring, PD
9	3341412	1	Rear Suction Valve Mechanism	58	0120375	2	Nut-Hex, 0.25NC, PD
10	3352222	1	Gasket-Pump, Strainer Box	59	3341421	1	Valve Mechanism-4" Front Suction
11	3341899	1	Pump Asm - Asphalt	60	3301209	1	Can Asm-4" Front Suction Valve
12	3390716	1	Guard	61	S1761AK	1	Lid Asm-Strainer Box R+L Fill
13	6445090	1	Coupling	62	3340039	1	Filling Line Asm
14	6603157	1	Motor-42 Series	63	3340043	1	Pipe Asm-Tank Car
	6603173	1	Motor-90 Series	64	6410079	1	Gearbox-Planetary
15	6001265	2	Screw-Hex,5/16NC x 1,Gr 8	65	0119096	1	Elbow-Pipe, 45, 1.00 NPT, PN
16	0180175	2	Screw-Hex,1/2NC x 1 1/4,Gr 5	66	0119099	1	Elbow-Pipe, 90, 0.75 NPT, PN
17	3340515	3	Gasket-Flange	67	0119100	1	Elbow-Pipe, 90, ST, 1.00 NPT, PN
18	3341441	1	4 Way Valve Assembly	68	0219354	1	Nipple-Sch 40, 1.00 x 8.50, PN
19	3340519	1	Gasket-Return Line	69	3370323	1	Speed Pickup
20	0180124	12	Screw-Hex, 0.38NC x 1.25, GR5, PD	70	3341911	1	Handwheel Asm-Gate Valve
21	3361154	1	Key- 3/8 x 2 7/8				
22	3341480	1	Line Asm				
23	6445089	1	Coupling-Shaft,Plain,5/8				
24	3341915	1	Valve -Gate,Modified				
25	6000274	1	Key- 3/8 x 2 7/8				
26	6000071	2	Gasket-3 Flange, AV10233B, ASB				
27	6600045	1	Vlv-Gate, G1013, 3 Allegney Vlv				
	7420250	1	Gland Follower				
	7420251	1	Packing Set				
	7420252	1	Gland Washer				
28	6000068	1	Flange-20056A, 3 Flued Alegny Cplg				
29	3341481	1	Pipe Asm - Fill Line				
30	3341078	2	Ring Asm-Clamping Transfer Vlv				
	9413946	1	Nut-Hex, Lock, 0.25NC, EA, PD				
	0121913	1	Screw-Hex, 0.25NC x 1.25, GR2, PD				
31	6001056	4	Cap-Retainer, 0.5 Dia Stud				
32	3380388	2	Cap Asm-Fill Line				
33	3340041	2	Clamp Asm-3 Hose Conn.				
34	3340033	2	Clamp Asm-Screw, Filling Line				
35	0219189	1	Plug-Pipe, SqHd, 0.25NPT, PN				
36	3301195	1	Nipple-Pump Off Line				
37	3341482	1	Pipe Asm - Pump Off & Handspray				
38	3301200	1	Fill Line Asm				
39	3301199	1	Tank Car Pipe Asm				
40	3340004	1	Strainer Asm (Optional)				
41	3390030	1	Hook-Intake Strainer				
42	0141621	2	Elbow-Pipe, 90, ST, 0.75 NPT, PN				
43	6602237	1	Valve-Ball, 0.75, Bronze				
44	6600852	4	Adapter-ARBK, ST, 12MP-12MT				
45	3341745	1	Tube-Suckback				
46	0125988	1	Tee-Pipe, 0.75 NPT, PN				
47	0190717	1	Nipple-Sch 40, 0.75 x 2.00, PN				
48	3341746	1	Tube-Suckback				
49	0128003	2	Bushing-Pipe, 1.00 x 0.75NPT, PN				

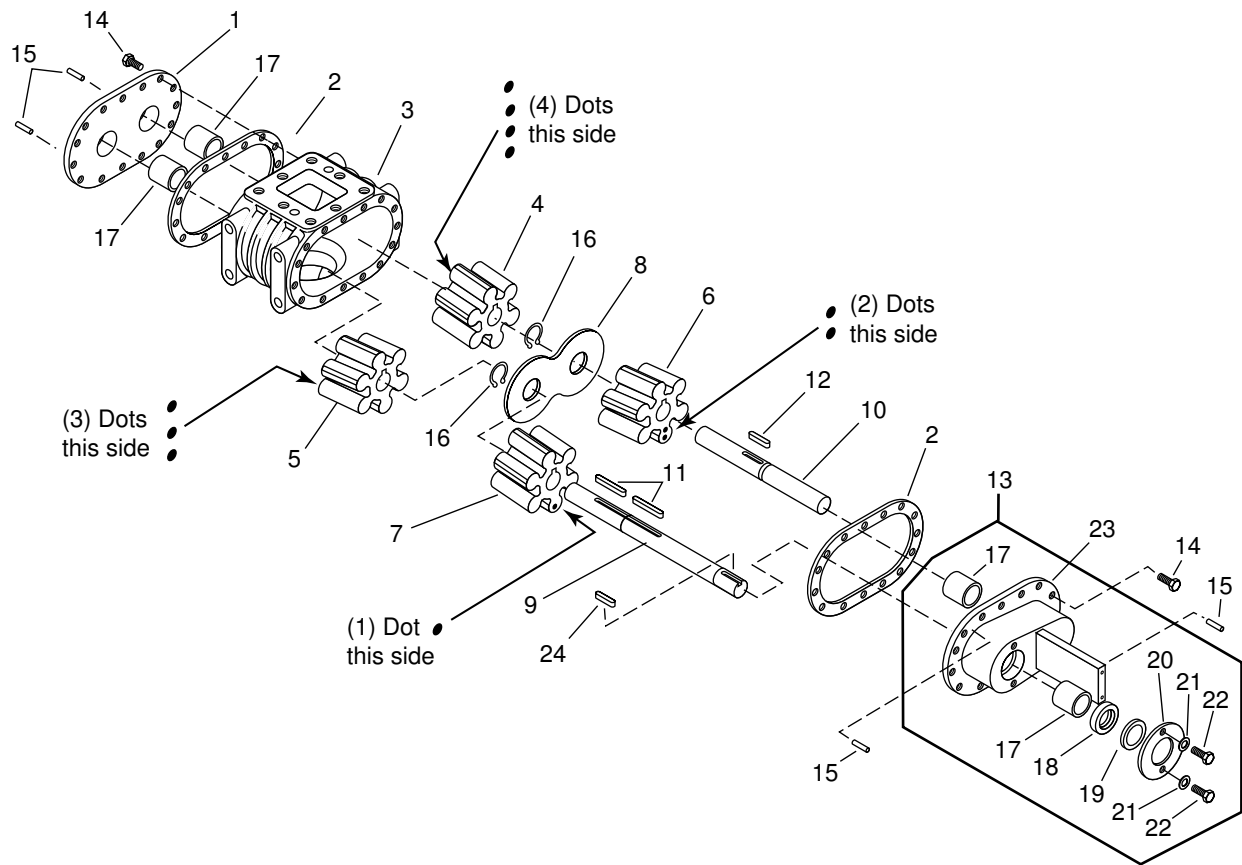
CIRCULATION SYSTEM

Suckback System



REF	PART NO.	QTY	DESCRIPTION	REF	PART NO.	QTY	DESCRIPTION
1	3341653	1	Strainer Box Asm-Phase II	16	3341684	1	Bracket-Mtg, Suckb Cyl
2		1	Drop Tube & Hanger Asm- Call with Unit Serial Number	17	6602719	1	Cylinder-Air, 1.06 B X 6" Stroke
3	0144613	2	Nipple-Sch 40, 0.75 X 1.38 CL, PN	18	6602339	1	Clevis-Rod, Cyl
4	6602237	2	Valve-Ball, .750, Bronze	19	6100337	1	Bolt-Eye, 0.31 NC X 1.00, PD
5	3341697	1	Lever-Suckb, Long, Auto, Phase II	25	0114951	1	Washer-Flat, 1/2", PN
6	9402711	2	Adapter-Hydr, ST, 12MP-12MJ	26	3341679	1	Rod-Tie, Suckb, Vlvs, Phase II
7	9410257	1	Elbow-Hydr, ST, 45, 12FJX-12MJ	27	0120369	4	Nut-Hex, 0.38NF, PD
8	6200846	2	Hose Asm- 12X11.75, 12FJX-12MP90	28	6100138	2	Joint-Ball, 0.37 NF, SR-109G
9	4470915	2	Elbow-Hydr, 45, 12FJX-12MP	29	0120388	4	Washer-Flat, 0.38
11	3341678	1	Lever-Suckback, Short, Phase II	30	0120382	2	Washer-Lock, 0.38, Spring, PD
12	3341680	1	Tie Rod Asm Suckb Vlvs	31	6602399	2	Hose Barb-04 x 02MP, 90, LP
				32	6001005	2	Clamp-Hose, Screw Type, M5
				33	6601452	AR	Hose-Air Sol-Cyl.

Asphalt Pump Assembly



CIRCULATION SYSTEM

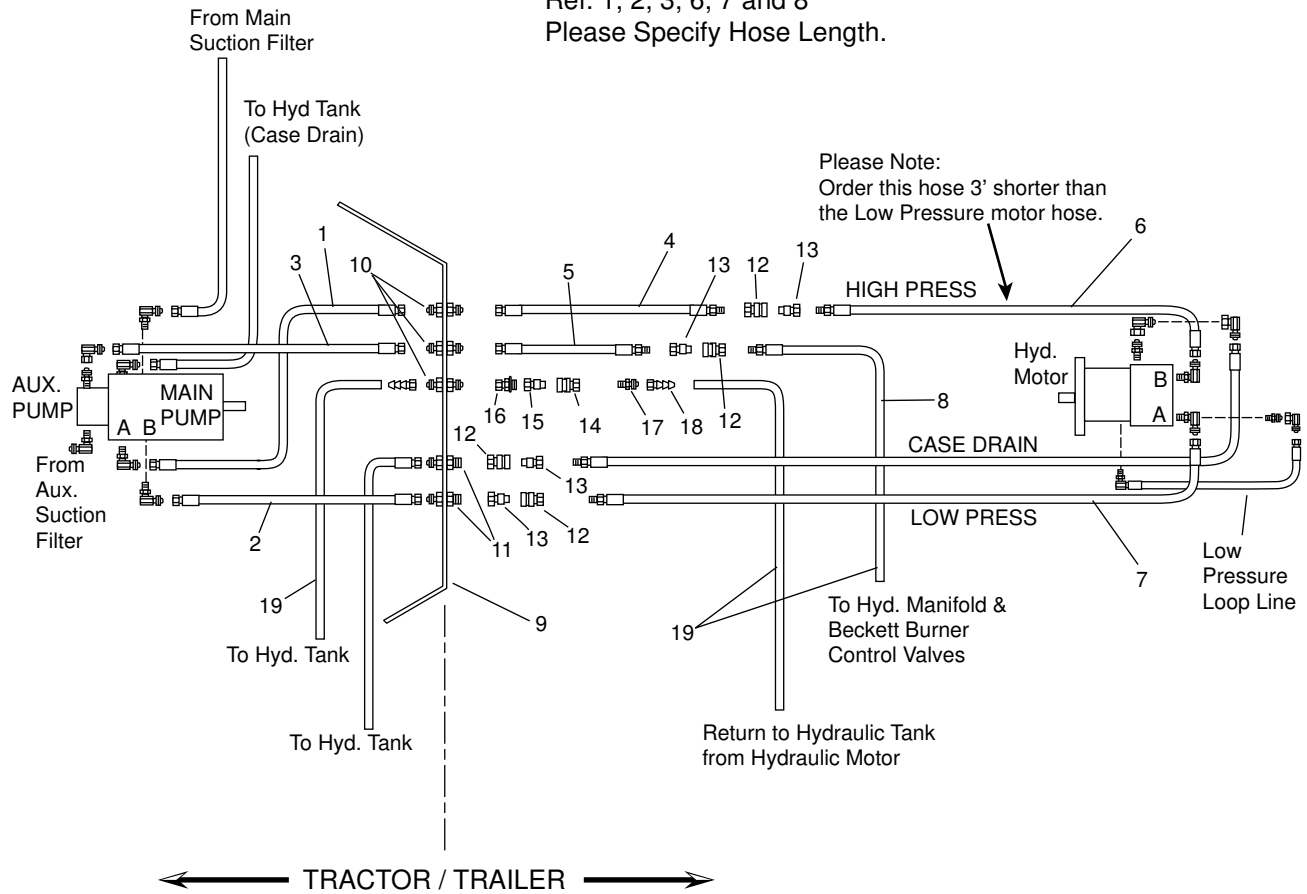
REF	PART NO.	QTY	DESCRIPTION	REF	PART NO.	QTY	DESCRIPTION
1	3341558	1	Plate Asm - Rear Plate	14	0120233	40	Screw-Hex, 0.38NC x 1.00 GR2,PD
2	3340287	2	Gasket-Face Plate	15	6100444	4	Pin-Dowel, 1/4 x 3/4
3	3341216	1	Case-Pump, P-15	16	6001169	2	Snap Ring-Ext
4	3340279	1	Impeller-Herringbone (4)LH w/Key	17	3341559	4	Bearing-Pump Shaft
5	3340277	1	Impeller-Herringbone (3)RH w/Key	18	6420231	1	Seal-Shaft, HP, 1 7/16 Shaft
6	3341462	1	Impeller-Herringbone (2)	19	3342018	1	Washer-Pump Seal Spacer
7	3341463	1	Impeller-Herringbone (1)	20	3341647	1	Seal Retainer Plate
8	3340298	1	Plate-Division	21	0120382	2	Washer-Lock, 0.38, Spring, PD
9	3341898	1	Pump Shaft - Drive	22	0122119	2	Screw-Hex, 0.38NC x 0.75, GR2, PD
10	3341553	1	Pump Shaft - Idler	23	3341893	1	Endplate,Pump/Motor Mt.
11	2640725	2	Keystock 1/4 X 1/4 x 2 1/2 Lg	24	6000224	1	Key-0.31 x 1.00
12	2640726	2	Keystock 1/4 X 1/4 x 1 Lg				
13	3341892	1	Front Face Plate Assembly (Includes items 17 thru 23)				

Specify Unit Serial No., Part No., & Part Description

Trailer Distributor Hydraulic Hoses

Crank Drive, 42 Series LH Pump

NOTE: Hydraulic Hoses
Ref. 1, 2, 3, 6, 7 and 8
Please Specify Hose Length.

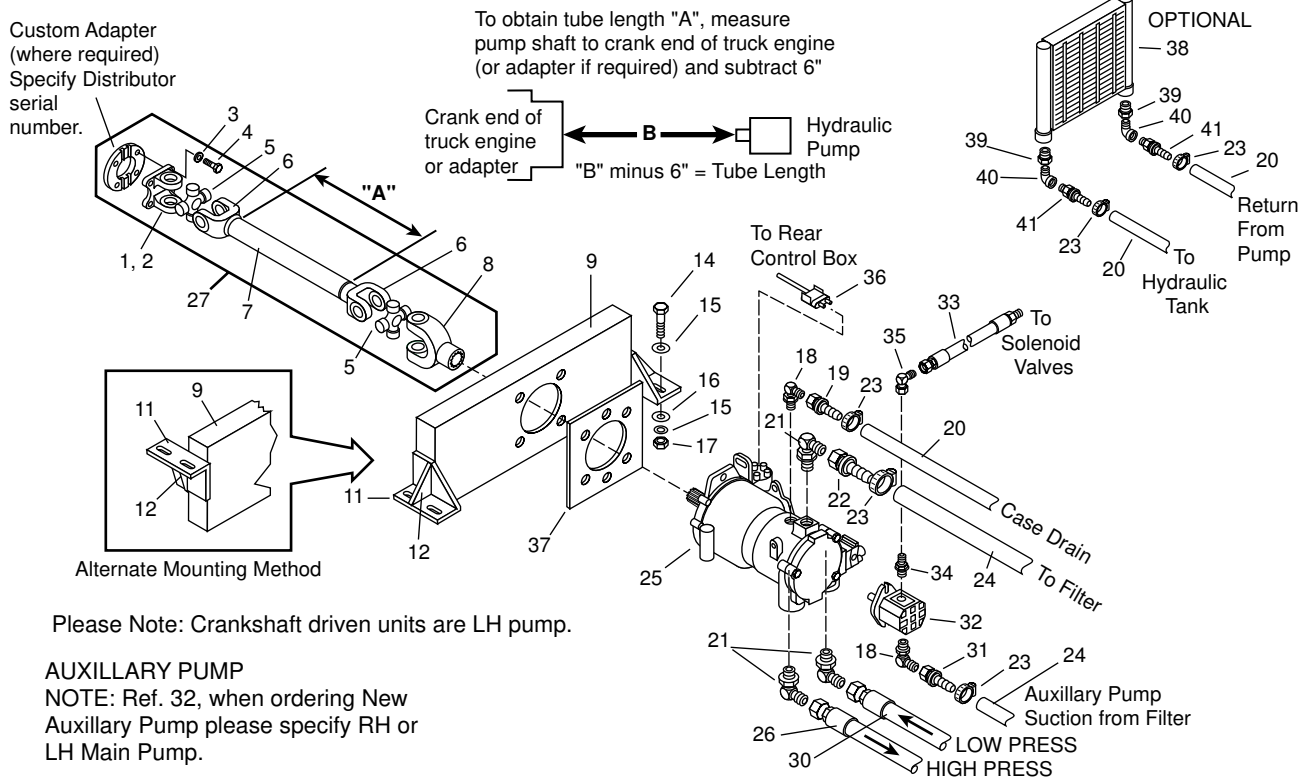


HYDRAULIC SYSTEM

REF	PART NO.	QTY	DESCRIPTION	REF	PART NO.	QTY	DESCRIPTION
1	9250610	1	Hose Asm-12 x —, 12FJX-I6FJX (HP)	12	6602296	4	Female Quick Coupler, 12MP
2	9250611	1	Hose Asm-12 x —, 12FJX-16FJX (LP)	13	6602297	4	Male quick Coupler, 12MP
3	9250617	1	Hose Asm-12 x —, 12FJX-12FJX	14	6602294	2	Female Quick Coupler, 12MB
4	9250618	1	Hose Asm-12 x 36, 12MP-12FJX	15	6602295	2	Male Quick Coupler, 12MB
5	9250619	1	Hose Asm-12 x 24, 12MP-12FJX	16	6602096	2	Adp-Hyd, ST, 12MB-12FJX
6	9250620	1	Hose Asm-12 x —, 12MP-12FJX	17	9410205	2	Adp-Hyd, ST, 12MB-12MJ
7	9250621	1	Hose Asm-12 x —, 12MP-12FJX	18	6600648	4	Hose End, 12-12FJX
8	9250622	1	Hose Asm-12 x —, 12MP-08MB	19	6600646	AR	Hose-Self Grip
9	3390466	1	Stanchion Asm (S1876 & Below)				
	3380710	1	Stanchion Asm (S1877 & Above)				
10	9403257	4	Adp-Hyd, BHD, ST, 12MJ-12MJ				
11	6601709	2	Adp-Hyd, BHD, ST, 12MJ-12MP				

AR = As Required

Hydraulic Pump Drive - Crankshaft Driven 42 Series Pump



REF	PART NO.	QTY	DESCRIPTION	REF	PART NO.	QTY	DESCRIPTION
1	6440172	1	Yoke-Flange, 2.75 Male Pilot	27	9301275	1	Drive Line Asm
2	3170021	2	Yoke-Flange, 2.38 Male Pilot	28	0120377	4	Nut, 0.38NC
3	0120382	4	Lock Washer, 0.38, Spring, PD	29	0186679	4	Hex Screw, 0.38NC x 1.25, GR8
4	0454904	4	Hex Screw, 0.38NC x 0.75, GR8, PD	30	9250611	1	Hose Asm, LP, 12FJX-12FJX (Specify Lg)
5	3170013	2	Journal & Bearing	31	6601812	1	Hose End, 12FJ, 1.00 Hose
6	6440164	2	Yoke	32	6602390	1	Hyd Pump, 0.68CI, A Pad, Spline, LH
7	6303278	AR	Tube-2.00 x 14 Ga.	7420255	1	Seal Kit	
8	6440200	1	Yoke-End, 1.00, 15T	33	9250612	1	Hose Asm, LP (Specify Length)
9	3321423	1	Mtg. Channel	34	6600903	1	Hyd Adapter, ST, 08MJ-10MB
11	3321330	2	Angle (S1001 - S1189 & Above)	35	9410281	1	Hyd Elbow, 90, 08FJX-08MJ
	3321424	1	Angle, LH	36	3370247	1	Cable Asm - Pump Stroker
	3321426	1	Angle, RH	37	3321414	1	Adapter
12	3321332	2	Gusset	38	6600880	1	Oil Cooler
14	0122459	4	Hex Screw, 0.50NC x 2.00, GR2, PD	39	0128003	2	Pipe Bushing-1.00 x 0.75NPT
15	0120390	4	Flat Washer, 0.50A, W, PD	40	0141621	2	Pipe Elbow, 90, ST, 0.75NPT
16	0120384	4	Lock Washer, 0.50, Spring, PD	41	6600647	2	Hose End, 12 x 12MP, ST, LPSP
17	0120378	4	Nut, 0.50NC, PD				AR = As Required
18	9410979	2	Hyd Elbow, 90, 12MB-12MJ				
19	6600648	1	Hose End-12 x 12FJX, ST, Push Lock				
20	6600646	AR	Hose-Self Grip				
21	6601568	3	Hyd Elbow, 90, 16MB-16MJ				
22	6601566	1	Hose End, 16FJX-16, ST				
23	6000792	1	Hose Clamp, Worm Drive, 1.06 to 2				
24	6601564	AR	Suction Hose, 1.00 ID, SAE 100R4				
25	6603161	1	Pump-3.1 CI,RH,EDC,Spline,A Pad				
	6603162	1	Pump-3.1 CI,LH,EDC,Spline,A Pad				
26	9250610	AR	Hyd Hose Asm, HP (Specify Length)				

Hydrostatic Drive System - PTO Driven 42 Series Pump

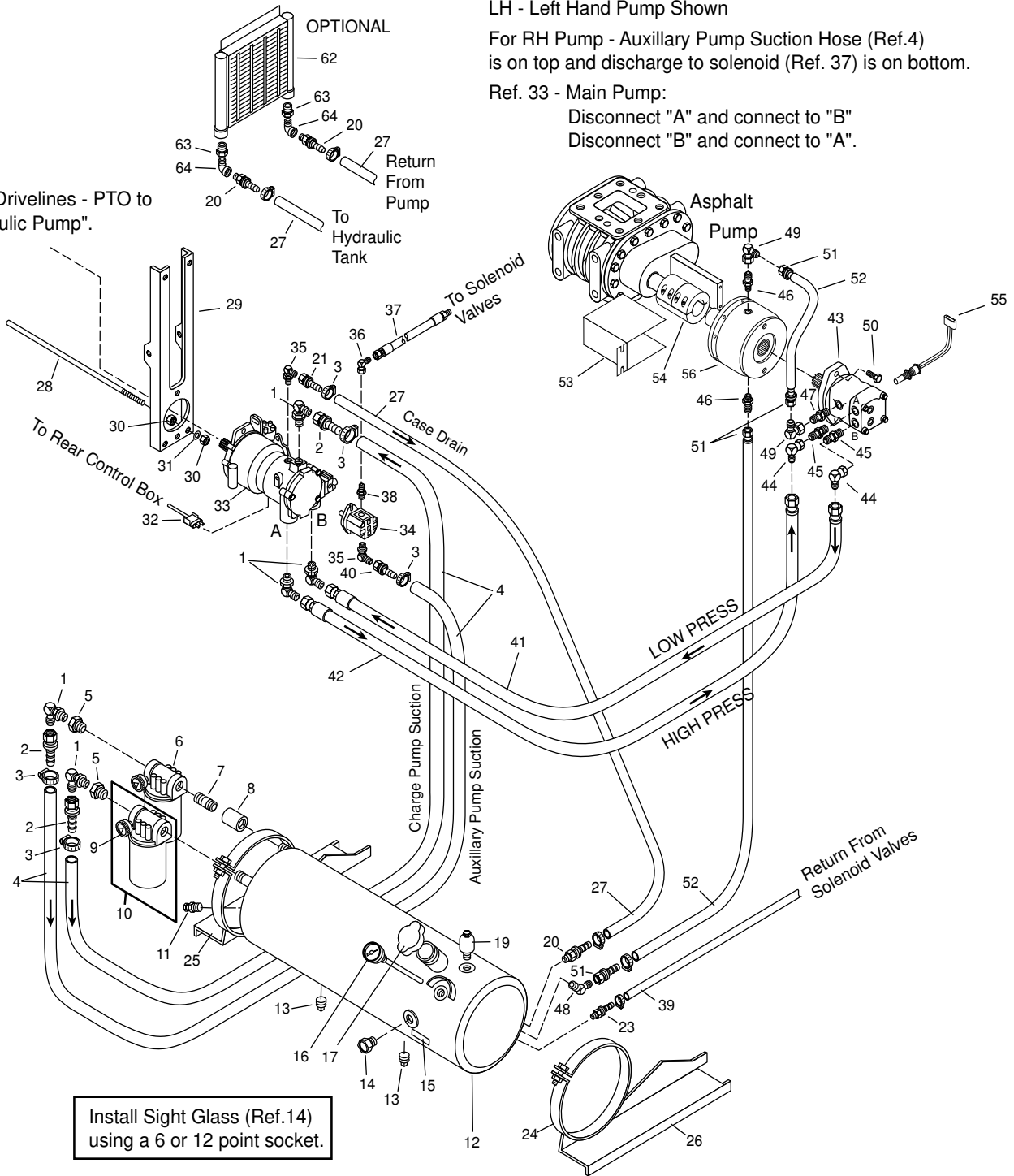
LH - Left Hand Pump Shown

For RH Pump - Auxillary Pump Suction Hose (Ref.4) is on top and discharge to solenoid (Ref. 37) is on bottom.

Ref. 33 - Main Pump:

Disconnect "A" and connect to "B"
Disconnect "B" and connect to "A".

See "Drivelines - PTO to Hydraulic Pump".



Install Sight Glass (Ref.14) using a 6 or 12 point socket.



IMPORTANT

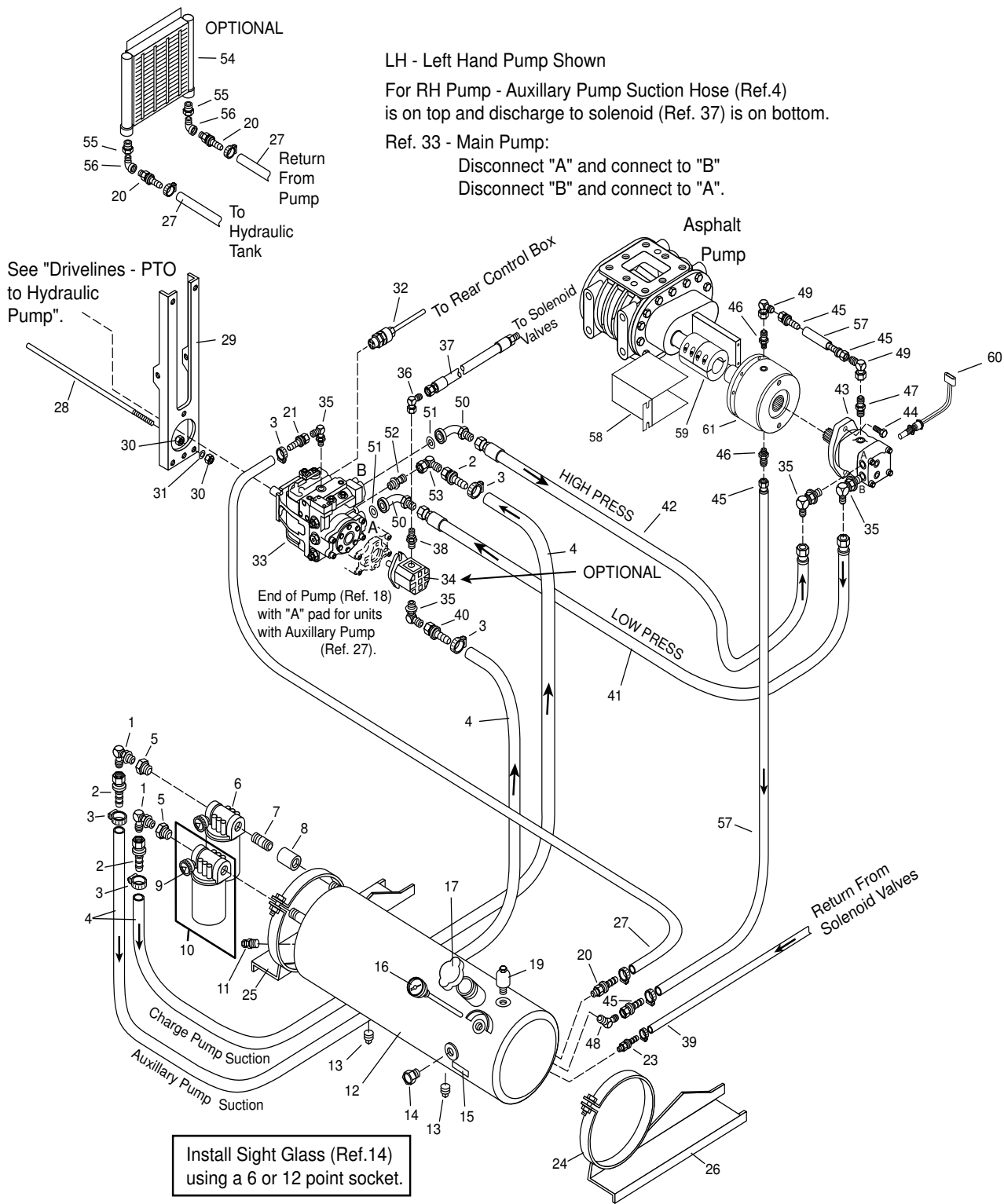
Fill reservoir with clean Texaco Rando HD 46 oil , or Sunoco Sunvis 821WR or equivalent hydraulic oil.

**Hydrostatic Drive System - PTO Driven
42 Series Pump**

REF	PART NO.	QTY	DESCRIPTION	REF	PART NO.	QTY	DESCRIPTION
1	6601568	2	Elbow-Hyd, 90, 16MB-16MJ	43	6603157	1	Motor-1.53 CIR,w/Loop Flush
2	6601566	3	Hose End, 16-16FJX, ST	44	9410283	2	Elbow-Hydr,90,12FJX-12MJ
3	6000792	3	Clamp-Hose, Worm Dr., 1.06 to 2	45	6600910	2	Adapter-Hydr,St,10MB-12MJ
4	6601564	AR	Suction Hose, 1" ID	46	6603043	2	Adapter-Hydr,St,08MJ-04BSPP
5	0215915	1	Pipe Bushing, 1.25 x 1.00 NPT	47	9410203	1	Adapter-Hydr,St,08MJ-08MB
6	6602214	1	Vacumn Filter, 10 Micron	48	6602170	1	Elbow-Hyd, 45,08MJ-08MP
	7420244	1	Replacement Element	49	9410281	2	Elbow-Hyd, 90,08FJX-08MJ
7	0219357	1	Nipple-1.25 x 2.00, CL	50	0180175	2	Screw-Hex,1/2NC x 1 1/4,Gr 5
8	0144066	1	Pipe Coupling, 1.25 NPT	51	6600664	2	Hose End-08FJX, ST
9	7420042	2	Indicator	52	6600662	1	Hose-0.50
10	6601571	1	Return Line Filter, 1.25 NPT	53	3390716	1	Guard
	7420219	1	Element, 10 Micron	54	6445090	1	Coupling
11	6600237	1	Thermo Switch	55	3370323	1	Speed Pickup
12	3321386	1	Hyd Tank Asm, 12" x 55"	56	6410079	1	Gearbox-Planetary
	3321905	1	Hyd Tank Asm, 14" x 40"				AR = As Required
13	0219301	4	Plug-Pipe, SqHd, 0.75 NPT				
14	6600224	1	Eyesite Oil Plug				
15	3390605	1	Oil Spec. Instruction Plate				
16	6500039	1	Thermometer-2" Dial, 9" Dual				
17	3330026	1	Cap				
18	6000233	1	Gasket-2.18", Leather				
19	6600223	1	Breather				
20	6600647	1	Hose End-12 x 12MP, ST, LPSP				
21	6600648	3	Hose End-12 x 12FJX				
22	9402828	1	Elbow-Hyd, 45, 12MJ-12MP				
23	6600663	1	Hose End-08 x 08MP, ST, LPSP				
24	3301156	2	Strap-12" Tank				
	3331867	2	Strap-14" Tank				
25	3301158	1	Hanger-LH, 12" Tank				
	3301307	1	Hanger-LH, 14" Tank				
26	3301157	1	Hanger-RH, 12" Tank				
	3301306	1	Hanger-RH, 14" Tank				
	3301309	1	Combination Hanger, LH, Center				
27	6600646	2	Self Grip Hose, 0.75 (Specify Length)				
28	6303119	1	Round-0.50 CR				
29	3321374	1	Support-Pump, 40 Series				
30	0120378	2	Nut-Hex, 0.50 NC				
31	0120384	2	Lock Washer, 0.50				
32	3370247	1	Cable Asm-Pump Stroker				
33	6603161	1	Pump-3.1 CI,RH,EDC,Spline,A Pad				
	6603162	1	Pump-3.1 CI,LH,EDC,Spline,A Pad				
34	6602390	1	Aux Pump, 0.68 CI, A Pad, Spline, LH				
	6602391	1	Aux Pump, 0.68 CI, A Pad, Spline, RH				
	7420255	1	Seal Kit (6602390 & 6602391)				
35	9410979	2	Elbow-Hyd, 90, 12MB-12MJ				
36	9410281	1	Elbow-Hyd, 90, 08FJX-08MJ				
37	9250612	1	Hose Asm-LP (Specify Length)				
38	6600903	1	Adapter-Hyd, ST, 08MJ-10MB				
39	6600662	1	Hose-Push Lock, 0.50 (SpecifyLength)				
40	6601812	1	Hose End, 16-12FJX, ST				
41	9250611	1	Hose Asm-LP, 12FJX-16FJX (Specify Length)				
42	9250610	1	Hose Asm-HP (Specify Length)				

HYDRAULIC SYSTEM

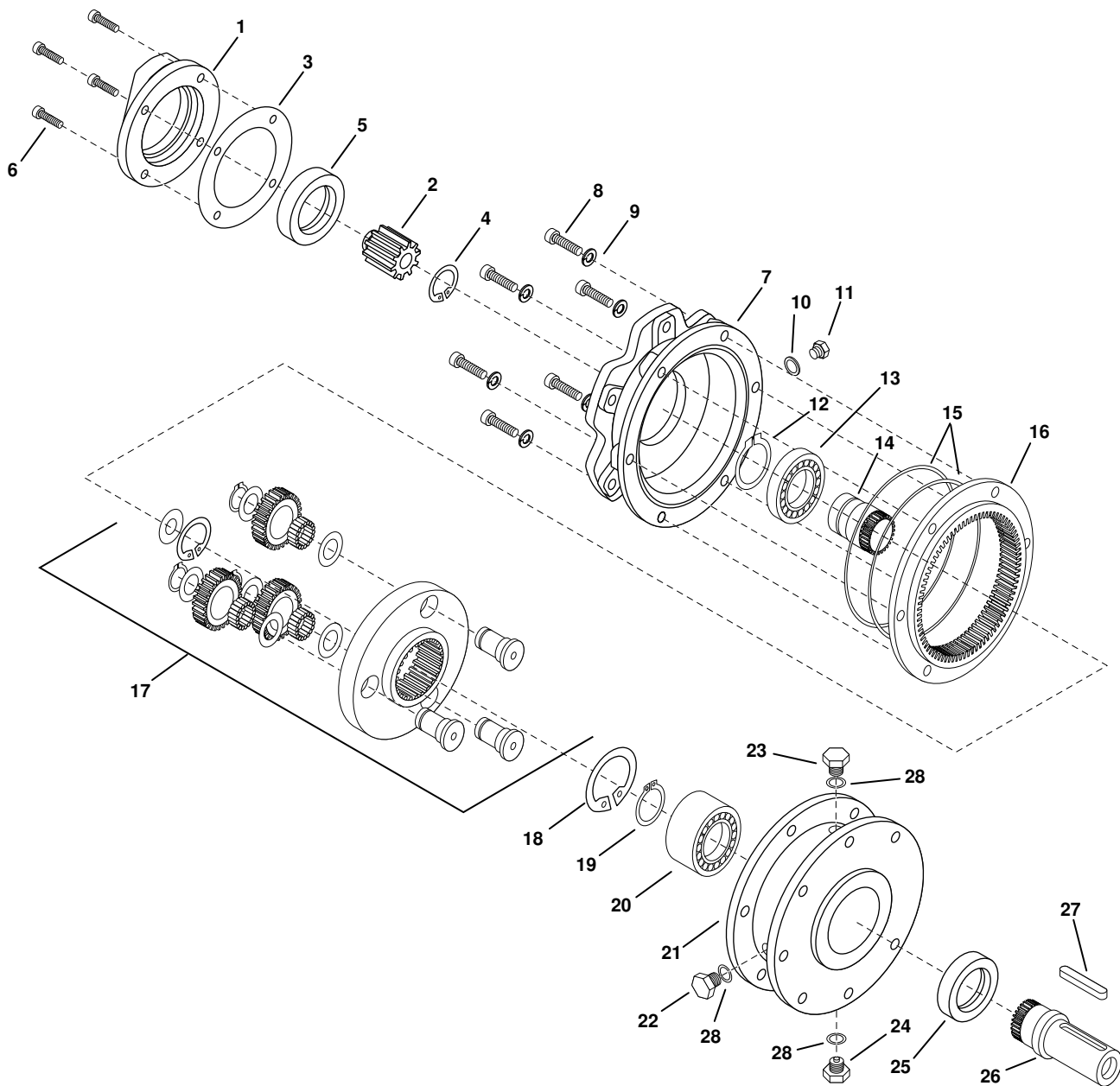
Hydrostatic Drive System - PTO Driven 90 Series Pump



Hydrostatic Drive System - PTO Driven 90 Series Pump

REF	PART NO.	QTY	DESCRIPTION	REF	PART NO.	QTY	DESCRIPTION
1	6601568	2	Elbow-Hyd, 90, 16MB-16MJ	37	9250612	1	Hose Asm-LP (Specify Length)
2	6601566	3	Hose End, 16-16FJX, ST	38	6600903	1	Adapter-Hyd, ST, 08MJ-10MB
3	6000792	3	Clamp-Hose, Worm Dr., 1.06 to 2	39	6600662	1	Hose-Push Lock, 0.50 (Specify Length)
4	6601564	AR	Hose-Suction, 1" ID	40	6601812	1	Hose End, 16-12FJX, ST
5	0215915	1	Bushing-Pipe, 1.25 x 1.00 NPT	41	9250611	1	Hose Asm-LP, 12FJX-16FJX (Specify Length)
6	6602214	1	Filter-Vacumn, 10 Micron	42	9250610	1	Hose Asm-HP (Specify Length)
	7420244	1	Replacement Element	43	6603173	1	Motor-Motor-2.69 CI,w/Loop Flush
7	0219357	1	Nipple-1.25 x 2.00, CL	44	0180175	2	Screw-Hex, 1/2NC x 1 1/4, Gr 5
8	0144066	1	Coupling-Pipe, 1.25 NPT	45	6600664	4	Hose End-8FJX, ST
9	7420042	1	Indicator	46	6603043	2	Adapter-Hydr, St, 08MJ-04BSPP
10	6601571	1	Filter-Return Line, 1.25 NPT	47	9410203	1	Adapter-Hydr, St, 08MJ-08MB
	7420219	1	Element-Filter, 10 Micron	48	6602170	1	Elbow-Hyd, 45, 08MJ-08MP
11	6600237	1	Switch-Thermo	49	9410281	2	Elbow-Hyd, 90, 08FJX-08MJ
12	3321386	1	Tank Asm-Hyd, 12" x 55"	50	6601045	2	Elbow-Hyd, 90, 16FL-16MJ
	3321905	1	Tank Asm-Hyd, 14" x 40"	51	0274253	2	"O" Ring Tube Fitting, 1.50
13	0219301	4	Plug-Pipe, SqHd, 0.75 NPT	52	9410233	1	Adapter-Hyd, ST, 16MB-16MB Long
14	6600224	1	Plug-Eyesite, Oil	53	9410285	1	Elbow-Hyd, 90, 16FJX-16MJ
15	3390605	1	Plate-Instruction, Oil Specifications	54	6600880	1	Cooler-Oil
16	6500039	1	Thermometer-2" Dial, 9" Dual	55	0128003	2	Bushing-Pipe, 1.00 x 0.75NPT
17	3330026	1	Cap-Filler, Hydraulic Tank	56	0141621	2	Elbow-Pipe, 90, ST, 0.75NPT
18	6000233	1	Gasket-2.18", Leather	57	6600662	1	Hose-0.50
19	6600223	1	Breather-Hydraulic Tank	58	3390716	1	Guard
20	6600647	1	Hose End-12 x 12MP, ST, LPSP	59	6445090	1	Coupling
21	6600648	3	Hose End-12 x 12FJX	60	3370323	1	Speed Pickup
22	9402828	1	Elbow-Hyd, 45, 12MJ-12MP	61	6410079	1	Gearbox-Planetary
23	6600663	1	Hose End-08 x 08MP, ST, LPSP				AR = As Required
24	3301156	2	Strap-12"				
	3331867	2	Strap-14"				
25	3301158	1	Hanger-LH, 12" Tank				
	3301307	1	Hanger-LH, 14" Tank				
26	3301157	1	Hanger-RH, 12" Tank				
	3301306	1	Hanger-RH, 14" Tank				
	3301309	1	Combination Hanger, LH, Center				
27	6600646	2	Hose-Self Grip, 0.75 (Specify Length)				
28	6303119	1	Round-0.50 CR				
29	3321323	1	Support-Pump, 90 Series				
30	0120378	2	Nut-Hex, 0.50 NC				
31	0120384	2	Washer-Lock, 0.50				
32	3370185	1	Pump Stroker Cable Asm				
33	6602755	1	Pump-4.57, LH, Ele., A Pad				
	6602754	1	Pump-4.57, RH, Ele., A Pad				
	7010097	1	A Pad Asm-Comp. (6602754 & 6602755)				
	6602753	1	Pump-4.57, LH, Ele., No Pad				
	6602752	1	Pump-4.57, RH, Ele., No Pad				
	7010092	1	Seal Kit (All Pumps)				
	7010096	1	Electronic Stroker (All Pumps)				
34	6602390	1	Pump-Aux, 0.68 CI, A Pad, Spline, LH				
	6602391	1	Pump-Aux, 0.68 CI, A Pad, Spline, RH				
	7420255	1	Seal Kit				
35	9410979	3	Elbow-Hyd, 90, 12MB-12MJ				
36	9410281	1	Elbow-Hyd, 90, 08FJX-08MJ				

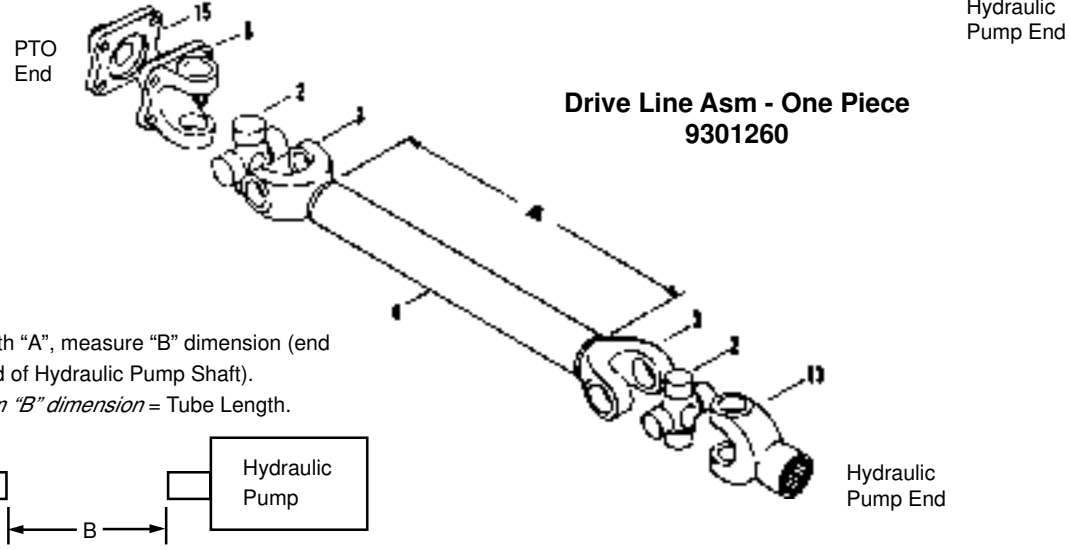
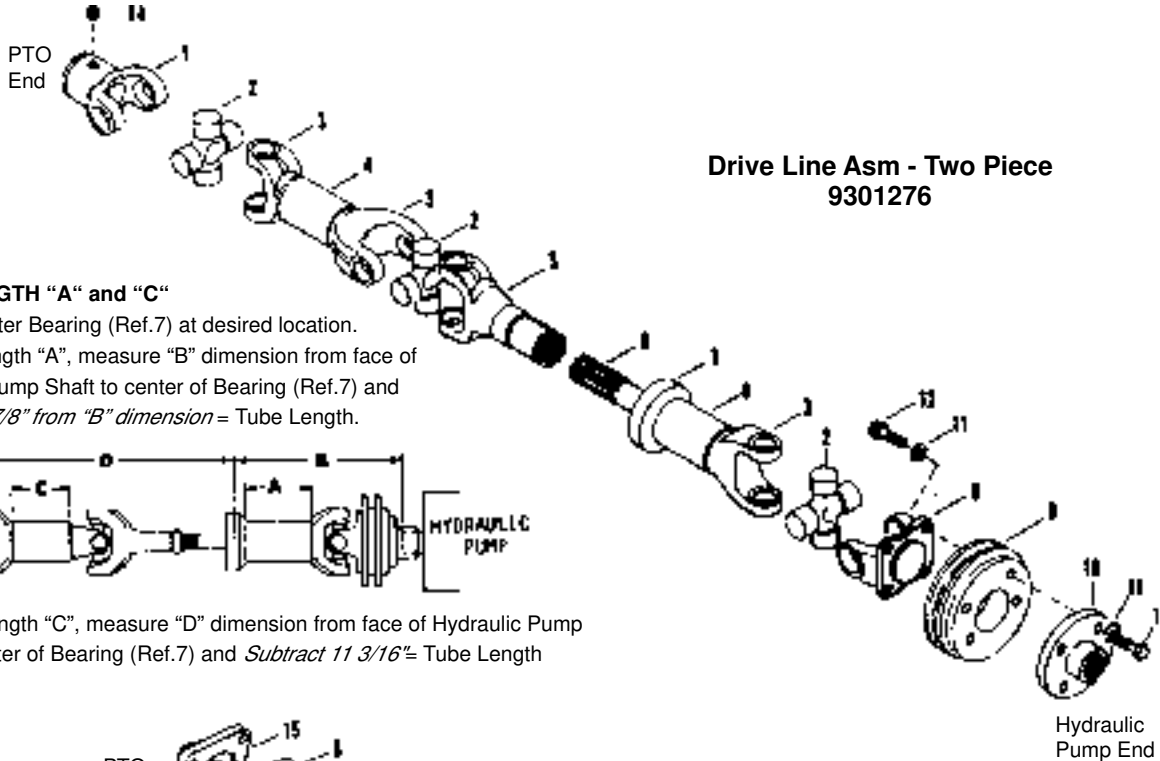
Planetary Gearbox - Asphalt Pump



HYDRAULIC SYSTEM

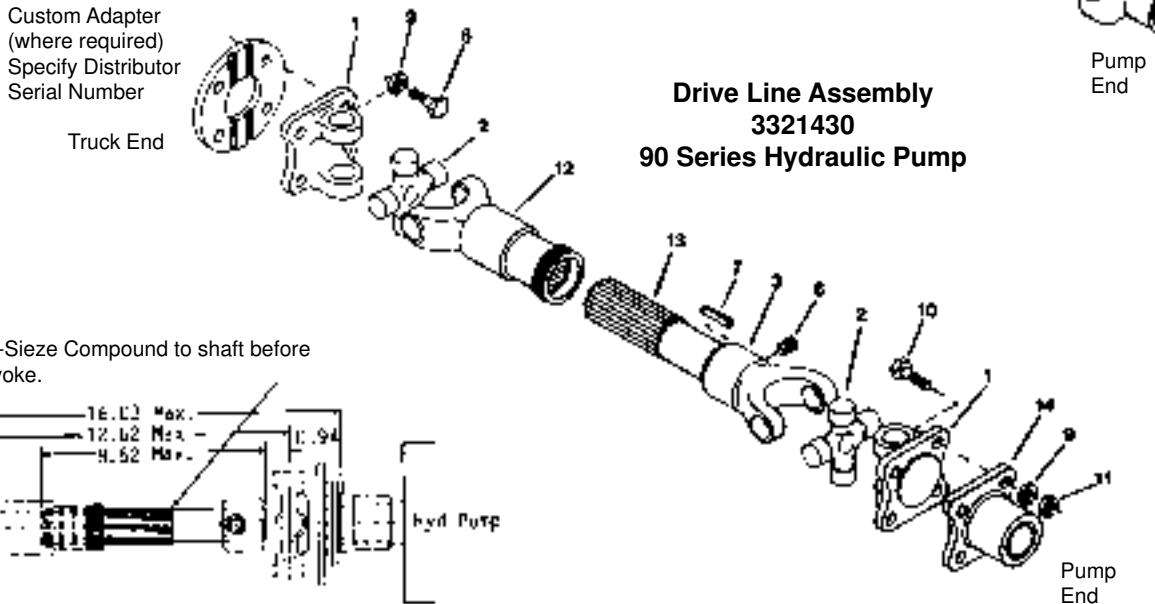
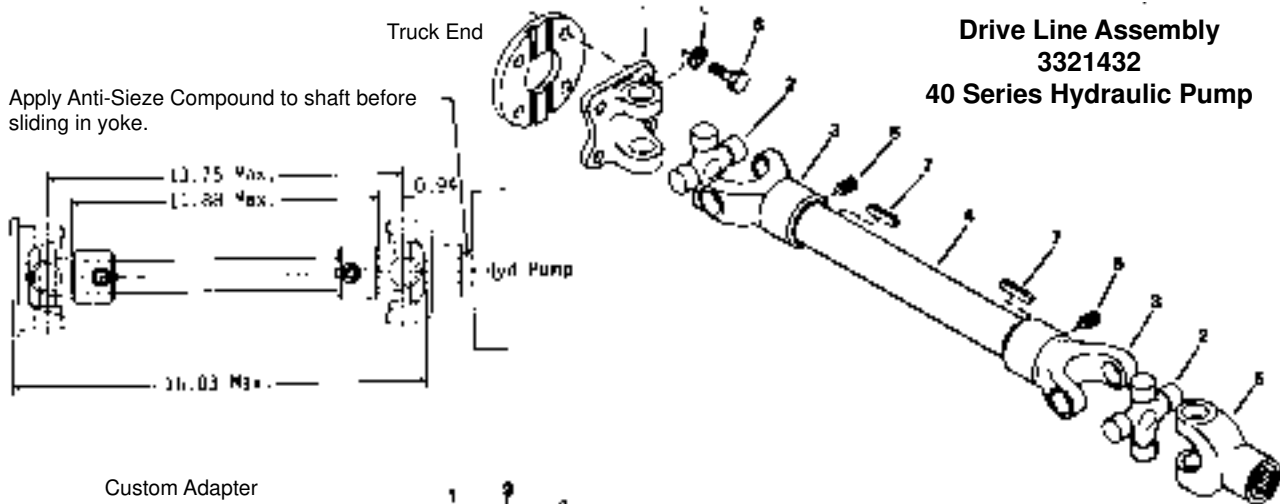
REF	PART NO.	QTY	DESCRIPTION	REF	PART NO.	QTY	DESCRIPTION
1	7050310	1	Flange-SAE B	15	7050293	2	O Ring
2	7050311	1	Adapter-13T Spline	16	7050299	1	Ring Gear
3	7050312	1	Gasket-Input	17	7050295	1	Planetary Gear Assembly
4	7050313	1	Snap Ring-50mm	18	7050284	1	Snap Ring-80mm
5	7050314	1	Lip Seal-60x85x10	19	7050285	1	Snap Ring-40mm
6	7050315	4	Bolt-Socket Hd,M12x30	20	7050282	1	Bearing
7	7050305	1	Flange-Input	21	7050280	1	Case-Output End
8	7050306	6	Bolt-Socket Hd,M8x45	22	7050288	1	Plug-Oil Level
9	7050307	6	Washer	23	7050287	1	Plug-Vent
10	7050308	1	Washer	24	7050289	1	Plug-Magnetic
11	7050309	1	Plug	25	7050283	1	Seal-Oil
12	7050292	1	Snap Ring-60mm	26	7050281	1	Shaft-Output
13	7050291	1	Bearing	27	7050286	1	Key-3/8x3/8x3
14	7050301	1	Pinion	28	7050290	1	Washer

Drive Line - PTO To Hydraulic Pump Units with 42 Series Hydraulic Pumps



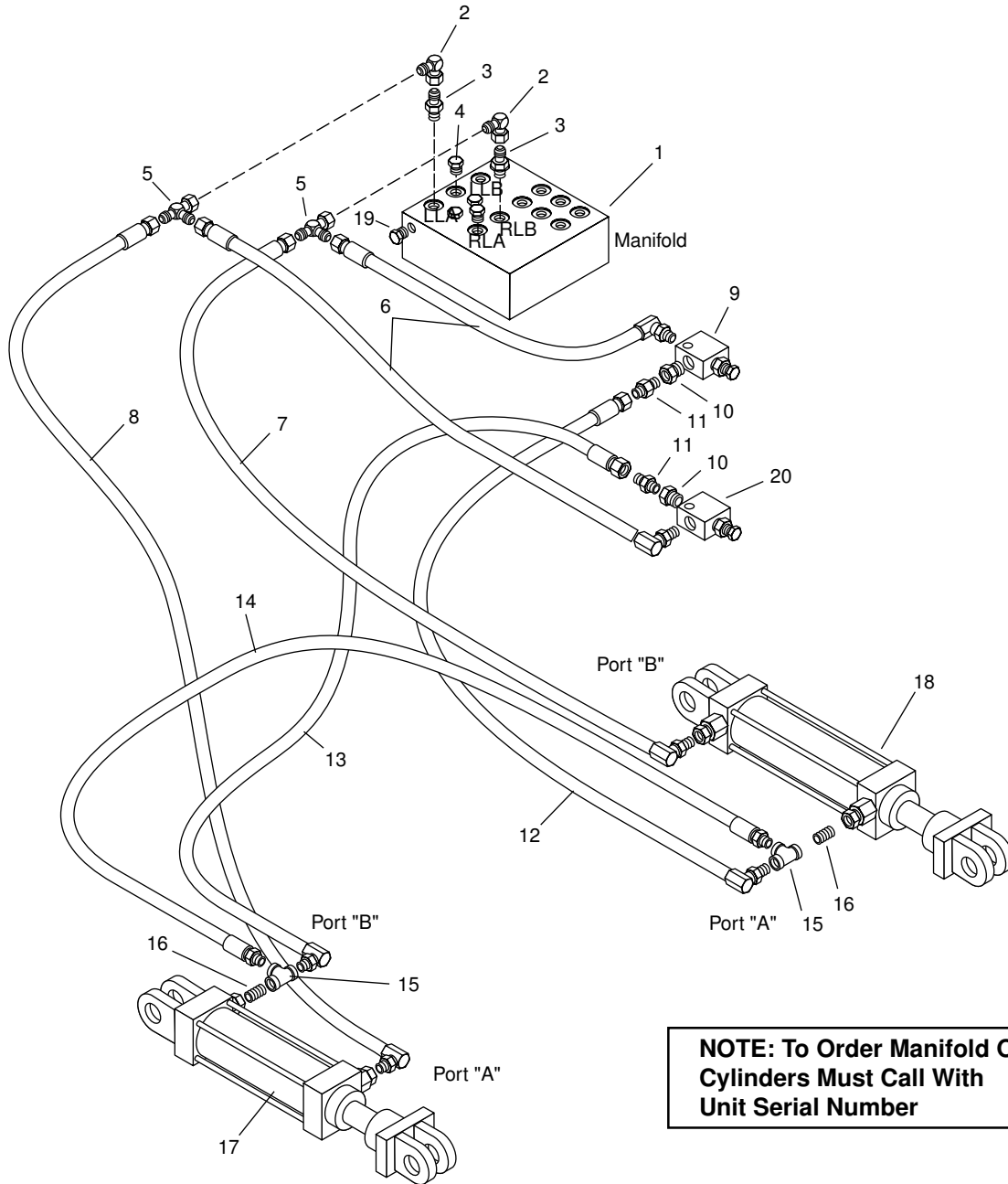
REF	PART NO.	QTY	DESCRIPTION	REF	PART NO.	QTY	DESCRIPTION
1	6440170	1	Yoke-End	9	3321014	1	Pulley
2	3170013	AR	Journal & Bearing	10	6440206	1	Flange-Companion
3	6440164	AR	Yoke-Stub	11	0120382	8	Washer-Lock, 0.38
4	6303278	AR	Tubing-2"OD x 14GA(Specify Length)	12	0186679	12	Screw-Hex, 0.38NC x 1.25, GR8,PD
5	6440165	1	Yoke Asm	13	6440200	1	Fitting-Yoke
6	6440166	1	Shaft-Stub	14	6100284	1	Screw-Sock, 0.50NC x 0.50 Lg.
7	6440167	1	Bearing	15	6440213	1	Flange-Companion Rect 1.25 Dia 240
8	3170021	2	Yoke-Flange				

Drive Line - PTO To Hydraulic Pump - Gmc Trucks 42 Series and 90 Series Hydraulic Pumps



REF	PART NO.	QTY	DESCRIPTION	REF	PART NO.	QTY	DESCRIPTION
1	3170021	AR	Yoke-Flange	9	0120382	AR	Washer-Lock, 0.38
2	3170013	2	Journal & Bearing Kit	10	0186679	4	Screw-Hex, 0.38NC x 1.25, GR8,PD
3	6440170	AR	End Yoke-1.25" Bore	11	0120377	4	Nut-Hex, 0.38NC,PD
4	3321431	1	Shaft (40 Series)	12	6440165	1	Yoke Asm, Splined
5	6440200	1	End Yoke, Splined	13	3321429	1	Shaft (90 Series)
6	0102615	AR	Screw-Sock, 0.50NC x 0.50Lg, Cup Pt.	14	6440162	1	Flange Companion, Tapered
7	6000161	AR	Key-0.31 x 0.31 x 1.50 Lg.				
8	0454904	4	Screw-Hex, 0.38NC x 0.75, GR8,PD				AR = As Required

Heavy Duty Bar Raise

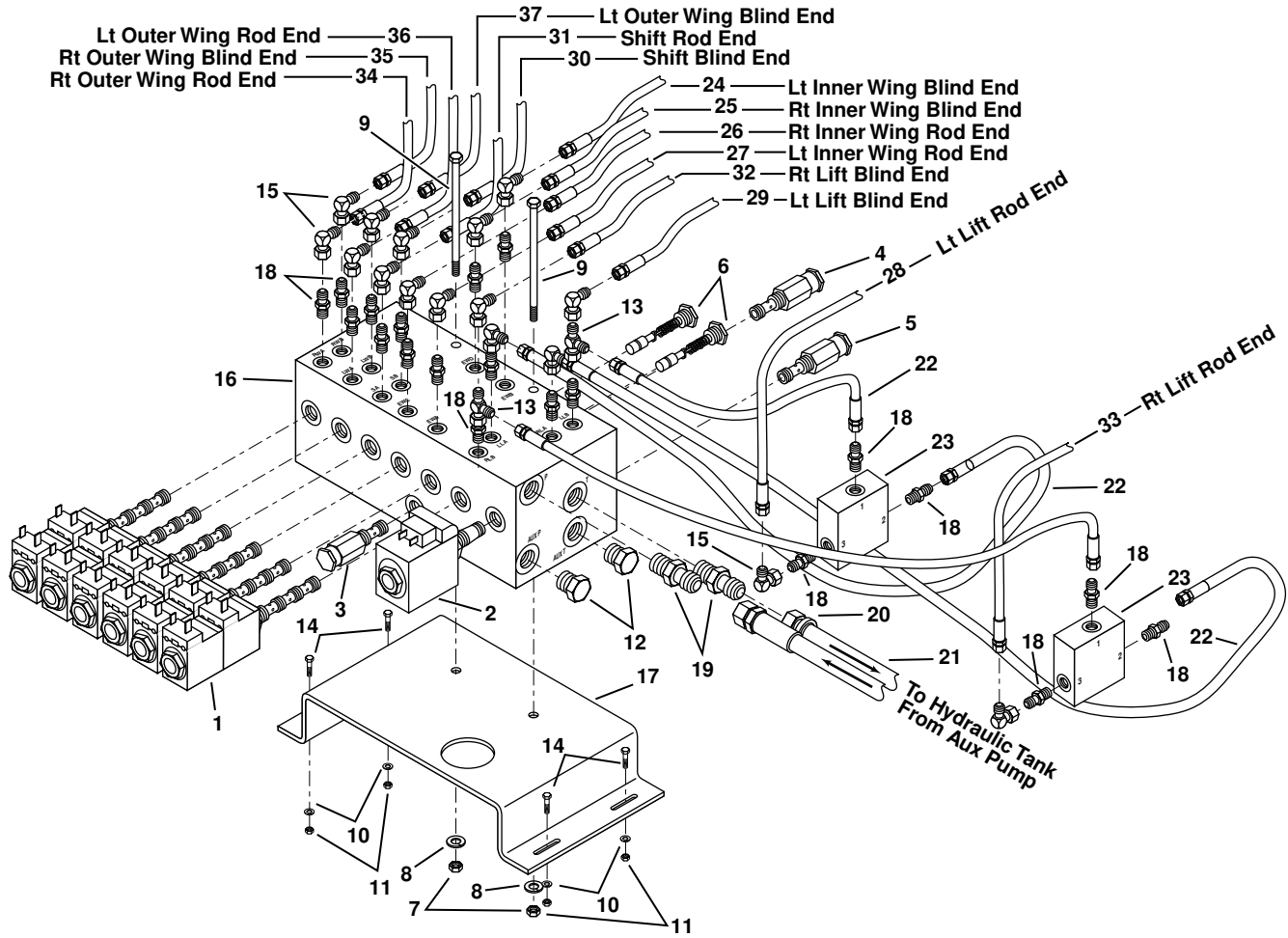


**NOTE: To Order Manifold Or
Cylinders Must Call With
Unit Serial Number**

REF	PART NO.	QTY	DESCRIPTION	REF	PART NO.	QTY	DESCRIPTION
1	6602356 6603033	1	Manifold-Call with Unit Serial Number	12	3361672	1	Hose Asm-04x137, 06MPX90-04FJX
2	9410278	2	Elbow-Hyd,90, 04FJX-04MJ	13	3361672	1	Hose Asm-04x126, 06MPX90-04FJX
3	9410200	2	Adapter-Hyd, ST, 04MB-04MJ	14	3180654	1	Hose Asm-04x27.5, 04MPX90-04MPX
4	9410356	2	Plug-Hyd, 04MB	15	0218237	2	Tee-Pipe, 0.38 x 0.25NPT
5	9410304	2	Tee-Hyd, 04MJ-04MJ-04FJX	16	0111305	2	Nipple-Pipe, 0.38 x 1.12 Lg
6	2960210	2	Hose Asm-04x19.5, 06MPX90-04FJX	17	6602657	1	Cylinder-Hyd, 3.00 x 5.00 Stroke
7	3361671	1	Hose Asm-04x126, 06MPX90-04FJX		3311804		Cylinder-Hyd, 3.00 w/Notch
8	3361097	1	Hose Asm-04x137, 06MPX90-04FJX	18	6602656	1	Cylinder-Hyd, 3.50 x 5.00 Stroke
9	3390707	1	Valve-Relief, Direct Acting, 700 PSI		3311805		Cylinder-Hyd, 3.25 w/Notch
10	0144036	2	Bushing-Pipe, 0.38 x 0.25NPT	19	4470943	1	Plug-Hyd, 10MB
11	6601381	2	Adapter-Hyd, ST, 04MP-04MJ	20	3390706	1	Valve-Relief, Direct Acting, 400 PSI

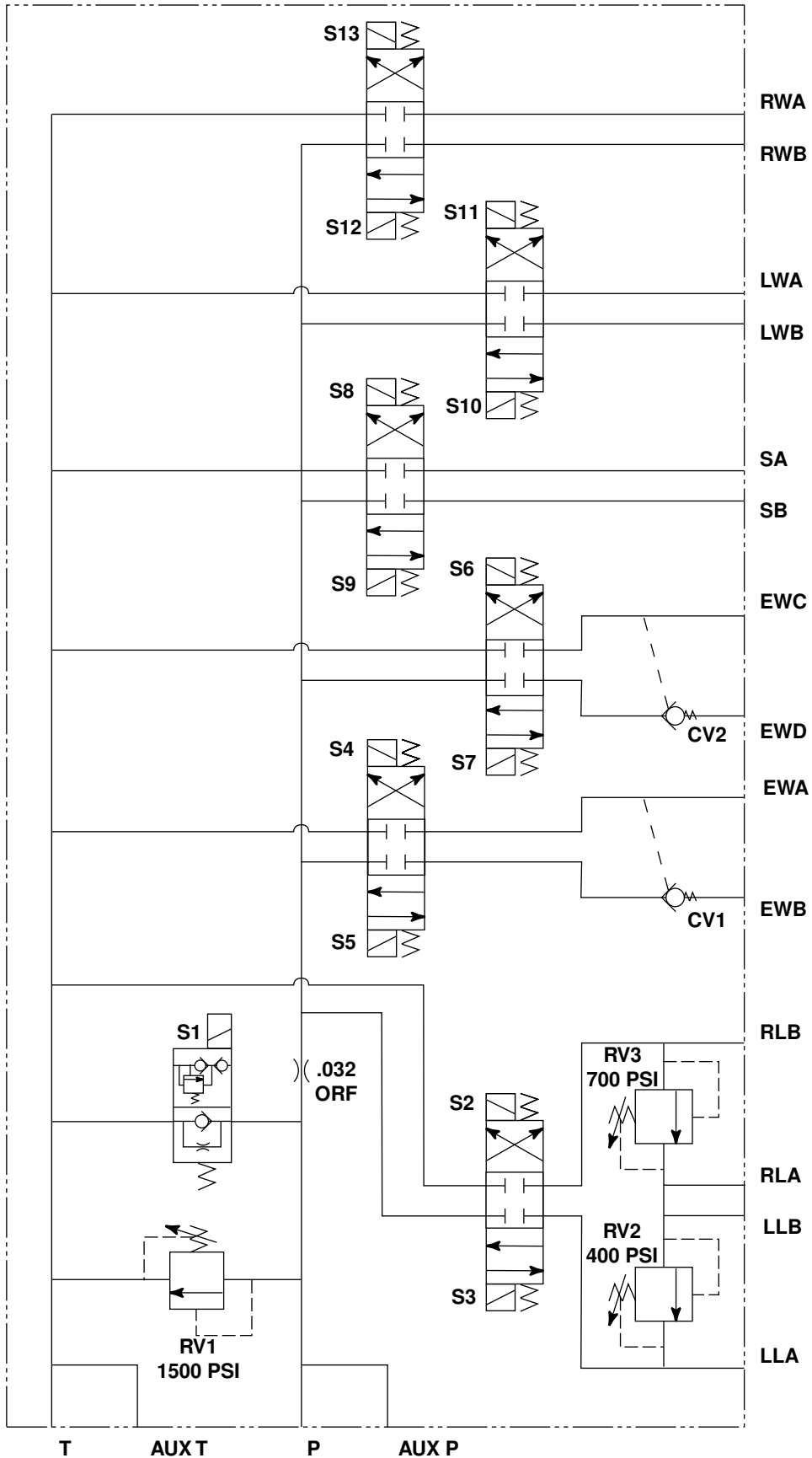
Specify Unit Serial No., Part No., & Part Description

6 Station Manifold Assembly



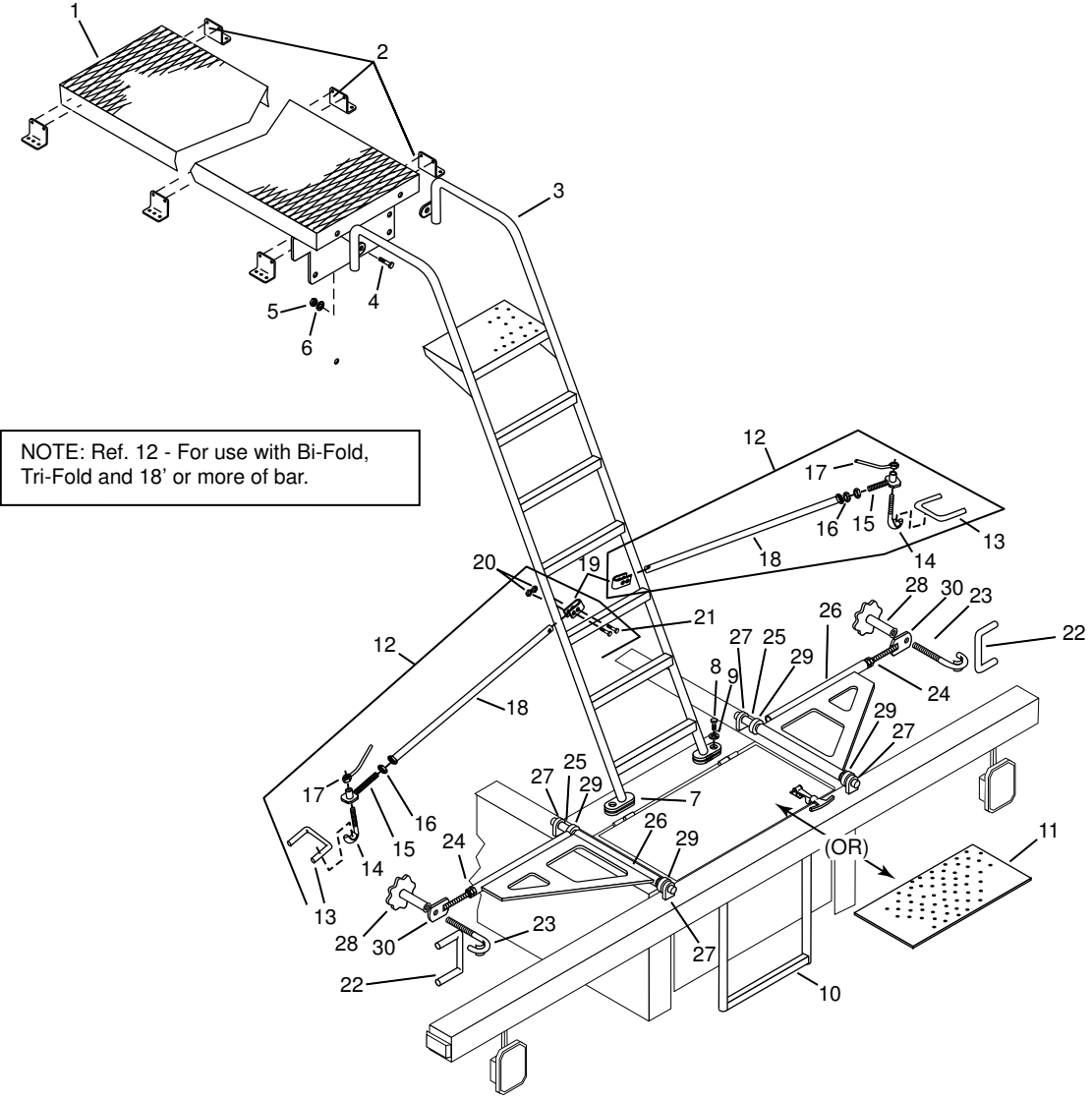
REF	PART NO.	QTY	DESCRIPTION	REF	PART NO.	QTY	DESCRIPTION
1	7230437	6	Valve-Sol,4-Way,3 Pos,Closed	21	6600662	1	Hose-Push Lock (Specify Length)
	7230438	1	Coil	22	3361301	4	Hose Asm-04 x 45,04FJX-04FJX
2	7230434	1	Valve-Sol,2-Way,2 Pos,Open	23	6603158	2	Valve-Check,Pilot Operated
	7230435	1	Coil	24	3361092	1	Hose Asm-04 x 180,04FJX-06MPX90
3	7230436	1	Valve-Relief,1500 psi setting	25	3361093	1	Hose Asm-04 x 160,04FJX-06MPX90
4	7230432	1	Valve-Relief,400 psi setting	26	3361095	1	Hose Asm-04 x 166,04FJX-06MPX90
5	7230431	1	Valve-Relief,700 psi setting	27	3361094	1	Hose Asm-04 x 174,04FJX-06MPX90
6	7230433	2	Valve-Check,Pilot Oper	28	3361097	1	Hose Asm-04 x 149,04FJX-06MPX90
7	0120377	2	Nut-Hex-0.38NC	29	3361096	1	Hose Asm-04 x 126,04FJX-06MPX90
8	0120382	2	Lock Washer-0.38	30	3361098	1	Hose Asm-04 x 136,04FJX-06MPX90
9	0179104	2	Screw-Hex,0.38NC x 4.50,Gr 2	31	3361099	1	Hose Asm-04 x 146,04FJX-06MPX90
10	0120380	4	Lock Washer-0.25	32	3361671	1	Hose Asm-04 x 132,04FJX-06MPX90
11	0120375	4	Nut-Hex,0.25NC	33	3361672	1	Hose Asm-04 x 155,04FJX-06MPX90
12	9410359	2	Plug-Hyd,08MB	34	3361214	1	Hose Asm-04 x 268,04FJX-06MPX90
13	9410304	2	Tee-Hyd, 04MJ-04FJX-04MJ	35	3361215	1	Hose Asm-04 x 278,04FJX-06MPX90
14	0121900	4	Screw-0.25NC x 1.00	36	3361216	1	Hose Asm-04 x 264,04FJX-06MPX90
15	9410278	15	Elbow-Hyd,90,04FJX-04MJ	37	3361217	1	Hose Asm-04 x 274,04FJX-06MPX90
16	6603033	1	Manifold Assembly Includes Items 1 through 6				
17	3361297	1	Bracket-Mtg,6 Sta,HD,Manifold				
18	9410200	17	Adapter-Hyd,ST,04MB-04MJ				
19	9410203	23	Adapter-Hyd,ST,08MB-08MJ				
20	6600663	1	Hose End-08 x 08MP,ST,LPSP				

Schematic - 6603033 Hydraulic Manifold Block



HYDRAULIC SYSTEM

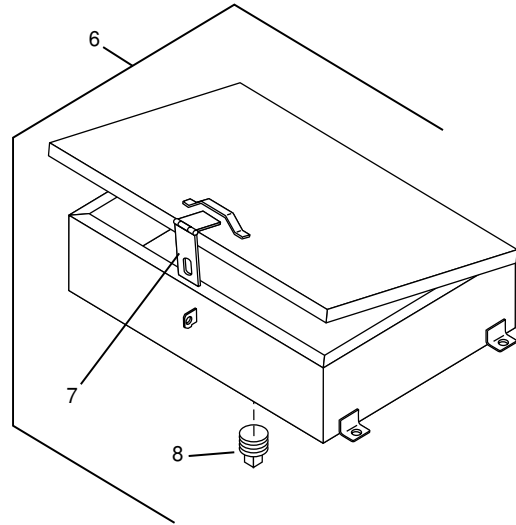
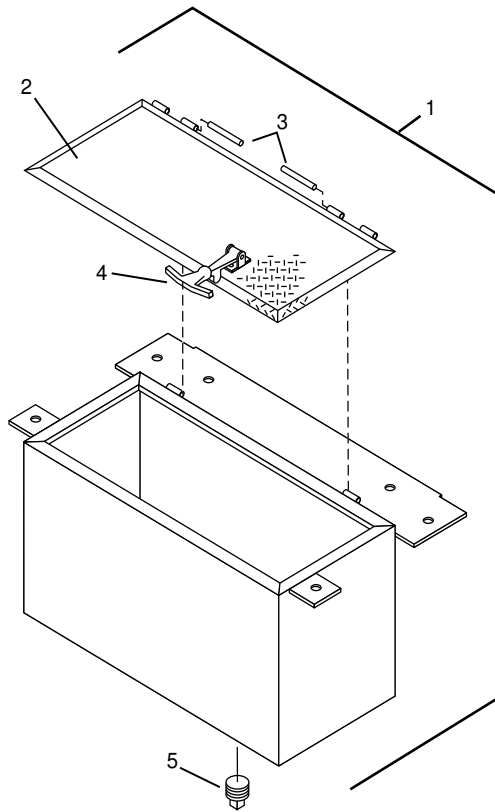
Ladder Assembly



NOTE: Ref. 12 - For use with Bi-Fold, Tri-Fold and 18' or more of bar.

REF	PART NO.	QTY	DESCRIPTION	REF	PART NO.	QTY	DESCRIPTION
1	3301851	1	Walkway Asm	13	3350346	1	Bracket
2	3301310	6	Clip	14	3350347	1	Hook Asm
3	3301264	1	Ladder Asm - 42 x 74 Oval	15	3350340	1	Support Asm
	3301266	1	Ladder Asm - 47 x 78 Oval	16	0426897	1	Nut-Hex, Jam , 0.75NC
	3301268	1	Ladder Asm - 50 x 83 Oval	17	3350795	1	Wing Nut Asm
	3301150	1	Ladder Asm - 53 x 88 Oval	18	3352803	1	Pipe Asm
	3301270	1	Ladder Asm - 59 x 89 Oval	19	3352804	1	Formed Plate
	3301272	1	Ladder Asm - 65 x 90 Oval	20	9411727	2	Nut-Hex, Lock, 0.50NC
	3301201	1	Ladder Asm - 70 x 92 Oval	21	0122459	2	Screw-Hex, 0.50NC x 2.00
4	0120233	2	Screw-Hex, 0.38NC x 1.00	22	3353072	2	Bracket-Bar,Bar Hold Clamp
5	0120377	2	Nut-Hex, 0.38NC	23	3353171	2	Hook Asm-Bar Hold Clamp
6	0120382	2	Washer-Lock, 0.38	24	0426897	2	Nut-Hex,Jam,3/4NC,PD
7	3301144	4	Lug	25	3353172	2	Shaft-Wing Latch
8	0122017	2	Screw-Hex, 0.31NC x 1.00	26	3353174	2	Latch Asm-Wing
9	0120214	2	Washer-Lock, 0.31	27	3353175	4	Mount-Wing Latch
10	3301197	1	Lower Ladder Asm	28	3353176	2	Nut-HandwheelAsm
11	3311807	1	Floor Plate	29	6001582	4	Collar-Clamp On,Shaft,Stl
12	3352808	2	Wing Lock Asm	30	3350340	2	Support Asm-Bar Hold Clamp

Tool Soak & Section Box Assemblies



TANK

REF	PART NO.	QTY	DESCRIPTION	REF	PART NO.	QTY	DESCRIPTION
1	3311812	1	Tool Soak Box Asm				
2	3311810	1	Lid				
3	3352683	2	Pin-Hinge				
4	6001161	1	Latch-T Handle				
5	0219301	1	Plug-Pipe, SqHd, 0.75NPT				
6	3342424	1	Box Asm-Section Carrier				
7	6000308	1	Safety Hasp				
8	0219303	1	Plug-Pipe, SqHd, 1.00NPT				

Specify Unit Serial No., Part No., & Part Description

INDEX

Part No.	Page No.	Part No.	Page No.	Part No.	Page No.	Part No.	Page No.	Part No.	Page No.
part no	page	0120388	16	0219301	22	3311804	27	3341441	11
0102615	26	0120390	19	0219301	31	3311805	27	3341441	12
0105407	8	0120918	8	0219303	31	3311807	30	3341441	14
0105423	8	0121887	8	0219354	14	3311810	31	3341442	12
0108686	8	0121900	28	0219357	20	3311812	31	3341442	14
0109421	8	0121913	10	0219357	22	3321014	25	3341462	17
0111305	27	0121913	12	0274253	22	3321031	10	3341463	17
0114951	16	0121913	14	0426897	30	3321306	10	3341464	11
0118750	8	0122017	30	0426897	30	3321307	10	3341475	12
0118755	11	0122119	17	0454904	19	3321308	10	3341476	12
0119095	12	0122459	19	0454904	26	3321323	22	3341480	12
0119096	14	0122459	30	2640725	17	3321330	19	3341480	14
0119097	8	0125947	11	2640726	17	3321332	19	3341481	12
0119099	14	0125987	12	2960210	27	3321374	20	3341481	14
0119100	14	0125988	12	3160005	10	3321386	20	3341482	12
0119931	8	0125988	14	3170013	19	3321386	22	3341482	14
0120128	8	0127961	8	3170013	25	3321414	19	3341553	17
0120214	30	0128003	12	3170013	26	3321423	19	3341558	17
0120233	10	0128003	14	3170021	19	3321424	19	3341559	17
0120233	17	0128003	19	3170021	25	3321426	19	3341647	17
0120233	30	0128003	22	3170021	26	3321429	26	3341653	12
0120280	8	0138207	8	3180654	27	3321431	26	3341653	16
0120369	16	0141621	12	3301144	30	3321905	20	3341678	16
0120375	12	0141621	14	3301150	30	3321905	22	3341679	16
0120375	14	0141621	19	3301156	20	3330026	20	3341680	16
0120375	28	0141621	22	3301156	22	3330026	22	3341684	16
0120377	8	0144034	8	3301157	20	3331867	20	3341697	16
0120377	10	0144036	27	3301157	22	3331867	22	3341745	14
0120377	19	0144066	20	3301158	20	3340004	12	3341746	14
0120377	26	0144066	22	3301158	22	3340004	14	3341892	17
0120377	28	0144112	8	3301195	12	3340029	11	3341893	17
0120377	30	0144613	12	3301195	14	3340033	12	3341898	17
0120378	19	0144613	16	3301197	30	3340033	14	3341899	12
0120378	20	0179104	28	3301199	12	3340039	12	3341899	14
0120378	22	0180124	12	3301199	14	3340039	14	3341911	12
0120380	12	0180124	14	3301200	12	3340041	12	3341911	14
0120380	14	0180175	12	3301200	14	3340041	14	3341915	12
0120380	28	0180175	12	3301201	30	3340043	12	3341915	14
0120382	8	0180175	14	3301209	12	3340043	14	3341964	12
0120382	10	0180175	14	3301209	14	3340277	17	3341964	14
0120382	11	0180175	20	3301264	30	3340279	17	3341965	12
0120382	16	0180175	22	3301266	30	3340287	17	3341965	14
0120382	17	0186679	19	3301268	30	3340298	17	3342018	17
0120382	19	0186679	25	3301270	30	3340512	12	3342424	31
0120382	25	0186679	26	3301272	30	3340515	12	3350340	30
0120382	26	0189777	12	3301306	20	3340515	14	3350340	30
0120382	28	0190717	14	3301306	22	3340519	14	3350346	30
0120382	30	0215915	20	3301307	20	3341078	12	3350347	30
0120384	19	0215915	22	3301307	22	3341078	14	3350795	30
0120384	20	0218237	27	3301309	20	3341187	11	3352222	12
0120384	22	0219189	11	3301309	22	3341216	17	3352222	14
0120386	8	0219189	12	3301310	30	3341412	12	3352683	31
0120386	12	0219189	14	3301851	30	3341412	14	3352803	30
0120386	14	0219191	8	3311642	10	3341421	12	3352804	30
0120388	10	0219301	20	3311750	11	3341421	14	3352808	30

INDEX									
Part No.	Page No.	Part No.	Page No.	Part No.	Page No.	Part No.	Page No.	Part No.	Page No.
3353072	30	3380388	12	6001005	8	6600045	14	6601566	19
3353171	30	3380388	14	6001005	16	6600162	8	6601566	20
3353172	30	3380695	12	6001056	12	6600168	8	6601566	22
3353174	30	3380695	14	6001056	14	6600223	20	6601568	19
3353175	30	3380710	18	6001062	11	6600223	22	6601568	20
3353176	30	3390030	12	6001161	31	6600224	20	6601568	22
3360832	8	3390030	14	6001169	17	6600224	22	6601571	20
3360859	8	3390149	7	6001265	12	6600237	20	6601571	22
3361092	28	3390466	18	6001265	14	6600237	22	6601709	18
3361093	28	3390540	7	6001582	30	6600299	8	6601779	8
3361094	28	3390591	7	6100138	16	6600303	8	6601812	19
3361095	28	3390592	7	6100139	7	6600304	8	6601812	20
3361096	28	3390605	20	6100284	25	6600306	8	6601812	22
3361097	27	3390605	22	6100337	16	6600306	11	6602096	18
3361097	28	3390636	7	6100444	17	6600324	8	6602128	8
3361098	28	3390637	7	6200044	14	6600324	11	6602170	20
3361099	28	3390655	7	6200179	8	6600646	18	6602170	22
3361106	10	3390659	7	6200658	14	6600646	19	6602214	20
3361107	10	3390669	7	6200846	16	6600646	20	6602214	22
3361108	10	3390670	7	6303119	20	6600646	22	6602237	12
3361109	10	3390678	7	6303119	22	6600647	19	6602237	14
3361110	10	3390679	7	6303278	19	6600647	20	6602237	16
3361111	10	3390680	7	6303278	25	6600647	22	6602294	18
3361112	10	3390681	7	6309255	8	6600648	18	6602295	18
3361119	8	3390682	7	6320272	7	6600648	19	6602296	18
3361133	10	3390683	7	6410079	12	6600648	20	6602297	18
3361148	10	3390684	7	6410079	14	6600648	22	6602339	16
3361154	12	3390685	7	6410079	20	6600662	8	6602356	27
3361154	14	3390686	7	6410079	22	6600662	20	6602390	19
3361163	8	3390696	7	6420231	17	6600662	20	6602390	20
3361214	28	3390706	27	6440162	26	6600662	22	6602390	22
3361215	28	3390707	27	6440164	19	6600662	22	6602391	20
3361216	28	3390716	12	6440164	25	6600662	28	6602391	22
3361217	28	3390716	14	6440165	25	6600663	8	6602399	16
3361227	8	3390716	20	6440165	26	6600663	20	6602404	12
3361233	8	3390716	22	6440166	25	6600663	22	6602404	14
3361263	8	3560170	12	6440167	25	6600663	28	6602575	8
3361269	8	3560170	14	6440170	25	6600664	20	6602656	27
3361291	11	4470915	16	6440170	26	6600664	22	6602657	27
3361292	11	4470943	27	6440172	19	6600852	12	6602719	16
3361297	28	6000068	12	6440200	19	6600852	14	6602752	22
3361301	28	6000068	14	6440200	25	6600880	19	6602753	22
3361671	27	6000071	12	6440200	26	6600880	22	6602754	22
3361671	28	6000071	14	6440206	25	6600903	19	6602755	22
3361672	27	6000161	26	6440213	25	6600903	20	6602788	8
3361672	27	6000224	11	6445089	12	6600903	22	6602818	8
3361672	28	6000224	17	6445089	14	6600910	20	6602992	8
3370185	22	6000233	20	6445090	12	6601045	22	6603023	11
3370247	19	6000233	22	6445090	14	6601381	27	6603033	27
3370247	20	6000274	12	6445090	20	6601452	16	6603033	28
3370249	10	6000274	14	6445090	22	6601455	8	6603043	20
3370323	12	6000308	31	6450357	8	6601456	8	6603043	22
3370323	14	6000792	19	6500039	20	6601564	19	6603157	12
3370323	20	6000792	20	6500039	22	6601564	20	6603157	14
3370323	22	6000792	22	6600045	12	6601564	22	6603157	20

INDEX

Part No.	Page No.	Part No.	Page No.	Part No.	Page No.	Part No.	Page No.	Part No.	Page No.
6603158	28	7050291	24	9250611	22				
6603161	19	7050292	24	9250612	19				
6603161	20	7050293	24	9250612	20				
6603162	19	7050295	24	9250612	22				
6603162	20	7050299	24	9250617	18				
6603173	12	7050301	24	9250618	18				
6603173	14	7050305	24	9250619	18				
6603173	22	7050306	24	9250620	18				
6700161	10	7050307	24	9250621	18				
6700255	10	7050308	24	9250622	18				
6701510	8	7050309	24	9301275	19				
6701897	10	7050310	24	9402711	16				
6701907	10	7050311	24	9402828	20				
6701974	10	7050312	24	9402828	22				
6701976	10	7050313	24	9403257	18				
6701980	10	7050314	24	9410200	27				
6702033	10	7050315	24	9410200	28				
6702072	10	7050320	8	9410203	20				
6702075	10	7050321	8	9410203	22				
6702076	10	7215169	8	9410203	28				
6702077	10	7230359	12	9410205	18				
6702094	10	7230359	14	9410233	22				
6702188	10	7230431	28	9410257	16				
6702192	10	7230432	28	9410278	27				
6702193	10	7230433	28	9410278	28				
6702194	10	7230434	28	9410281	19				
6702195	10	7230435	28	9410281	20				
6702196	10	7230436	28	9410281	20				
6702197	10	7230437	28	9410281	22				
6702198	10	7230438	28	9410281	22				
6702199	10	7420042	20	9410283	20				
6703077	10	7420042	22	9410285	22				
7010092	22	7420219	20	9410304	27				
7010096	22	7420219	22	9410304	28				
7010097	22	7420231	8	9410356	27				
7050058	8	7420244	20	9410359	28				
7050059	8	7420244	22	9410979	19				
7050060	8	7420250	12	9410979	20				
7050062	8	7420250	14	9410979	22				
7050064	8	7420251	12	9411727	12				
7050065	8	7420251	14	9411727	14				
7050066	8	7420252	12	9411727	30				
7050066	8	7420252	14	9413946	8				
7050067	8	7420255	19	9413946	10				
7050280	24	7420255	20	9413946	12				
7050281	24	7420255	22	9413946	14				
7050282	24	7520019	10	S1283AD	12				
7050283	24	7530034	8	S1283AD	14				
7050284	24	9250610	18	S1761AK	12				
7050285	24	9250610	19	S1761AK	14				
7050286	24	9250610	20						
7050287	24	9250610	22						
7050288	24	9250611	18						
7050289	24	9250611	19						
7050290	24	9250611	20						

**WARNING**

Do not use this machine for any operation which is not described in this manual. If you have any questions about operation of this machine, contact the Etnyre Service Department at 1-800-995-2116 or 1-815-732-2116. Operations that are not approved could cause serious injury or death.

PROPOSITION 65 WARNING

Diesel Engine exhaust and some of its constituents are known to the State of California to cause cancer, birth defects, and other reproductive harm.

Please note this warning and remember -

Always start and operate the engine in a well-ventilated area;

If in an enclosed area, vent the exhaust to the outside;

Do not modify or tamper with the exhaust system.

**WARNING****Fluoroelastomer handling**

Some "O" rings and seals used in this vehicle are made from fluoroelastomers. When used under design conditions, fluoroelastomers do not require special handling. However, when fluoroelastomers are heated to temperatures beyond their design temperature (around 600 degrees Fahrenheit), decomposition may occur with the formation of hydrofluoric acid. Hydrofluoric acid can be extremely corrosive to human tissue if not handled properly.

A degraded seal may appear as a charred or black sticky mass. Do not touch either the seal or the surrounding equipment without wearing neoprene or PVC gloves if degradation is suspected. Wash parts and equipment with 10% lime water (calcium hydroxide solution) to neutralize any hydrofluoric acid.

If contact with the skin occurs, wash the affected areas immediately with water. Then rub a 2.5 calcium gluconate gel into the skin until there is no further irritation, while seeking prompt medical attention.

Note to physicians: For advice or treatment of HF Burns, call the DuPont Medical Emergency Number 1-800-441-3637.

M-101-26-02R

Starting with Serial Number S-3255,
3269, 3273, 3276, 3279, 3292, 3293,
3295, 3296, 3300, 3302-3304, 3306,
3308-3315, 3317-3323, 3325 and Up

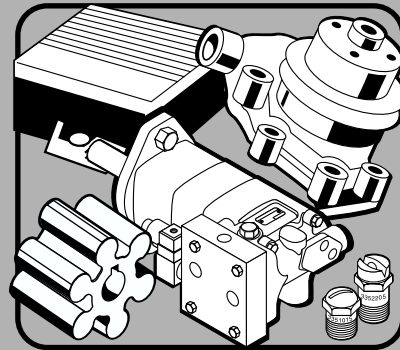
Supersedes M-101-26-02



Black-Topper® CENTENNIAL

*SUPPLEMENT TO
PARTS MANUAL M-101-99*

Asphalt Distributor



Repair Parts

