



# Phillips County KS

## Community Health Needs Assessment



**May 2012**

**VW Research & Development INC.  
Olathe, KS**

# Community Health Needs Assessment

## Table of Contents

### I **Executive Summary**

### II **Methodology**

- a) CHNA Scope & Purpose
- b) Local Collaborating CHNA parties...the identity of any and all organizations with which the organization collaborated and third parties that engaged to assist with the CHNA.
- c) CHNA & Town Hall Research Process... a description of the process & methods used to conduct the CHNA, a description of how the organization considered the input of persons representing the community, and an explanation of the process/criteria used in prioritizing such needs.
- d) Community Profile (Demographics/Economics)... a description of the community served by the facility and how the community was determined. TABS 1-2

### III **Community Health Status**

- a) Town Hall CHNA Findings: Areas of Strengths & Areas to Change and/or Improve.”
- b) County Health Area of Future Focus... a prioritized description of all of the community needs identified by the CHNA.
- c) Historical Health Statistics – TAB 3-10

### IV **Inventory of Existing County Health Resources**

- a) Physician Manpower, Health Service Offerings, Detail Inventory of HC providers and Detail Listing local DOH.... a description of the existing health care facilities and other resources within the community available to meet the needs identified through the CHNA.

### V **Detail Exhibits**

- a) Patient Origin & Access to Care
- b) Town Hall Attendees, Notes & Feedback... who those persons are (with qualifications)
- c) Public Notice & News
- d) Primary Research Detail

*Shaded lines note IRS requirements*

# I. Executive Summary

---

[VVV Research & Development INC]

## I. Executive Summary

The following report is the Community Needs Health Assessment for **Phillips County KS** for 2012. Creating healthy communities requires a high level of mutual understanding and collaboration with community individuals and partner groups. The development of this assessment brings together community health leaders and providers along with local residents to research, prioritize county health needs and to document community health delivery successes. This health assessment will serve as the foundation for community health improvement efforts for next three years.

The 2012 Community Health Needs Assessment (CHNA) brings together a variety of health status information. This assessment was coordinated and produced by VVV Research & Development INC from Olathe, KS under the direction of Vince Vandelaar, MBA. Important CHNA benefits for the sponsoring local hospital and health department, as well as for the community, are as follows: 1) Increases knowledge of community health needs and resources, 2) Creates a common understanding of the priorities of the community's health needs, 3) Enhances relationships and mutual understanding between and among stakeholders, 4) Provides a basis upon which community stakeholders can make decisions about how they can contribute to improving the health of the community, 5) Provides rationale for current and potential funders to support efforts to improve the health of the community, 6) Creates opportunities for collaboration in delivery of services to the community and 7) Provides guidance to the hospital & local health department for how it can align its services and community benefit programs to best meet needs.

The Patient Protection and Affordable Care Act (ACA) requires a non-profit hospitals to conduct a community health needs assessment (CHNA) every three years and adopt an implementation strategy to meet the needs identified by the CHNA.

### **Health Priorities:**

<b>Phillips County, KS Town Hall Community Health Needs N=70</b>			
<b>#</b>	<b>TOPIC</b>	<b>Votes</b>	<b>%</b>
<b>1</b>	Recruit Doctors (Primary Care, Peds, Surgeon, OB)	59	26.9%
<b>2</b>	Build cooperation between area healthcare providers	48	21.9%
<b>3</b>	Offer OB Services	27	12.3%
<b>4</b>	Expand Health Educational Programs	19	8.7%
<b>5</b>	Elderly Care (assistance)	18	8.2%
<b>6</b>	Substance Abuse	12	5.5%
<b>7</b>	Offer Dialysis Services	11	5.0%
<b>8</b>	Offer Chemo Therapy	11	5.0%
<b>9</b>	Prescription Financial Aid	10	4.6%
<b>10</b>	Expand Dental Services	4	1.8%
	<b>TOTAL</b>	<b>219</b>	<b>100%</b>

### **Key Community Health Needs Assessment Conclusions (Secondary Research)**

- KS HEALTH RANKINGS: According to 2012 RWJ County Health Rankings study, Phillips County's highest State of KS ranking (of 100 counties) was Social and Economic Factors (14<sup>th</sup>), with Length of Life (15<sup>th</sup>). The lowest ranking is in Environmental Quality (72<sup>nd</sup>).
- TAB 1: High percentage of population is over 65, and the ratio of children to adults is slightly higher. Also, slightly inflated is the number of people over 65 living alone.
- TAB 2: Percentage of households with public assistance is low and the foreclosure rate is comparable to other counties in the NWKS 10. Phillips has a low rate of violent crime, but a slightly higher percentage of unemployment.
- TAB 3: Active school health/wellness activities occurring. Low percentage of population with higher education (Bachelor's degree). However, county has a high student –to-teacher ration and higher high school graduation rate.
- TAB 4: Mothers in Phillips County are carrying their babies to full term (low percentage of premature births) and are initiating breastfeeding. However, a higher percentage of mothers are smoking during pregnancy. Mothers who receive prenatal care could also be higher.
- TAB 5: Hospital has had decreasing number of discharges over past 3 years. However, there have been low admission rates for injuries and COPD. The ratio of population to primary doctors could be improved.
- TAB 6: Financially the county has increased spending the previous 3 years on mental health and food assistance. The amount spent on temporary assistance for families has actually decreased and remained steady.
- TAB 7: Increased risk for lead in homes, obesity, and people who smoke. Years of potential life lost are high for heart disease and traffic injuries.
- TAB 8: Uninsured rate is relatively high. Also, charity care decreased in 2010 but saw a slight increase in 2011.
- TAB 9: Mortality rates for cancer and heart disease are higher in Phillips County; overall mortality rate is higher in Phillips County.
- TAB 10: County is successful in immunizing children and infants up to 24 months.

# II. Methodology

---

[VVV Research & Development INC]

## II. Methodology

### a. Scope and Purpose

The new federal Patient Protection and Affordable Care Act requires that each registered 501(c)3 hospital conduct a Community Health Needs Assessment (CHNA) at least once every three years and adopt a strategy to meet community health needs. Any hospital who has filed a 990 will be required to conduct a CHNA. IRS Notice 2011-52 was released in late fall of 2011 to give notice and request comments.

#### **JOB #1: Meet/Report IRS 990 Required Documentation**

1. A description of the process and methods used to conduct the CHNA;
2. The identity of any and all organizations with which the organization collaborated with and third parties that it engaged to assist with the CHNA;
3. A description of how the organization considered the input of persons representing the community (*e.g., through meetings, focus groups, interviews, etc.*), who those persons are, and their qualifications;
4. A prioritized description of all of the community needs identified by the CHNA and an explanation of the process and criteria used in prioritizing such needs;
5. A description of the existing health care facilities and other resources within the community available to meet the needs identified through the CHNA; and
6. A prioritized description of all of the community needs identified by the CHNA and an explanation of the process and criteria used in prioritizing.

Section 501(r) provides that a CHNA must take into account input from persons who represent the broad interests of the community served by the hospital facility, including individuals with special knowledge of or expertise in public health. Under the Notice, the persons consulted must also include

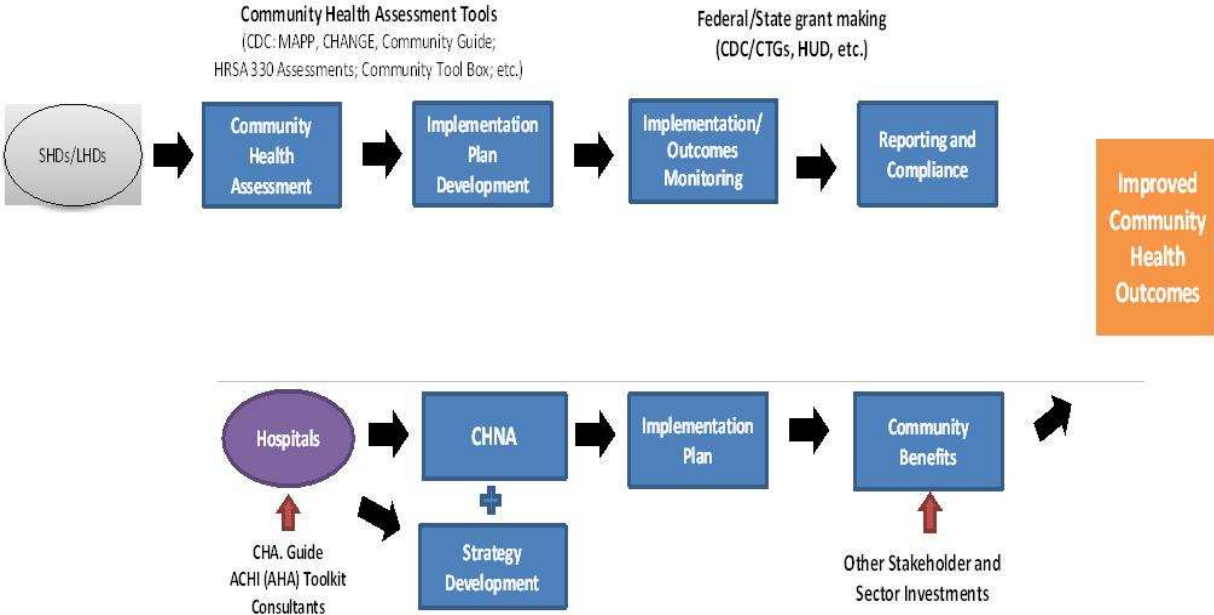
- a. Government agencies with current information relevant to the health needs of the community and
- b. Representatives or members in the community that are medically underserved, low-income, minority populations, and populations with chronic disease needs. In addition, a hospital organization may seek input from other individuals and organizations located in or serving the hospital facility's defined community (*e.g., health care consumer advocates, academic experts, private businesses, health insurance and managed care organizations, etc.*).

**JOB #2: Making a CHNA Widely Available to the Public** The Notice provides that a CHNA will be considered to be "conducted" in the taxable year that the written report of the CHNA findings is made widely available to the public. The Notice also indicates that the IRS intends to pattern its rules for making a CHNA "widely available to the public" after the rules currently in effect for Forms 990. Accordingly, an organization would make a facility's written report widely available by posting the final report on its website either in the form of (1) the report itself, in a readily accessible format, or (2) a link to another organization's website, along with instructions for accessing the report on that website.

The Notice clarifies that an organization must post the CHNA for each facility until the date on which its subsequent CHNA for that facility is posted.

**JOB #3: Adopt an Implementation Strategy (Hospital)** Section 501(r) requires a hospital organization to adopt an implementation strategy to meet the needs identified through each CHNA. The Notice defines an “implementation strategy” as a written plan that addresses each of the needs identified in a CHNA by either (1) describing how the facility plans to meet the health need, or (2) identifying the health need as one that the facility does not intend to meet and explaining why the facility does not intend to meet it. A hospital organization may develop an implementation strategy in collaboration with other organizations, which must be identified in the implementation strategy. As with the CHNA, a hospital organization that operates multiple hospital facilities must have a separate written implementation strategy for each of its facilities.

Great emphasis has been given to work hand-in-hand with leaders from both hospitals and the local county health department. As seen below a comprehensive Community Health Needs Assessment is required by both to “improve community health outcomes.” A common approach has been adopted to create the CHNA, leading to aligned implementation plans and community reporting.





# a2\_Community Health Needs Assessment

## Notice and Request for Comments Regarding the Community Health Needs Assessment Requirements for Tax-exempt Hospitals

IRS Notice 2011-52

### EXECUTIVE OVERVIEW

#### **Applicability of CHNA Requirements to “Hospital Organizations”**

The CHNA requirements apply to “**hospital organizations**,” which are defined in Section 501(r) to include (1) organizations that operate one or more state-licensed hospital facilities, and (2) any other organization that the Treasury Secretary determines is providing hospital care as its principal function or basis for exemption.

#### **How and When to Conduct a CHNA**

Under Section 501(r), a hospital organization is required to conduct a CHNA for each of its hospital facilities once every three taxable years. *The CHNA must take into account input from persons representing the community served by the hospital facility and must be made widely available to the public. The CHNA requirements are effective for taxable years beginning after March 23, 2012.* As a result, a hospital organization with a June 30 fiscal year end must conduct an initial CHNA for each of its hospital facilities by June 30, 2013, either during the fiscal year ending June 30, 2013 or during either of the two previous fiscal years.

#### **Determining the Community Served**

A CHNA must identify and assess the health needs of the **community served** by the hospital facility. Although the Notice suggests that geographic location should be the primary basis for defining the community served, it provides that the organization may also take into account the target populations served by the facility (e.g., children, women, or the aged) and/or the facility’s principal functions (e.g., specialty area or targeted disease). *A hospital organization, however, will not be permitted to define the community served in a way that would effectively circumvent the CHNA requirements (e.g., by excluding medically underserved populations, low-income persons, minority groups, or those with chronic disease needs).*

#### **Persons Representing the Community Served**

Section 501(r) provides that a CHNA must take into account input from **persons who represent the broad interests of the community** served by the hospital facility, including individuals with special knowledge of or expertise in public health. Under the Notice, the persons consulted must also include:

- (1) government agencies with current information relevant to the health needs of the community and
- (2) representatives or members of medically underserved, low-income, and minority populations, and populations with chronic disease needs, in the community. In addition, a hospital organization may seek input from other individuals and organizations located in or serving the hospital facility’s defined community (e.g., health care consumer advocates, academic experts, private businesses, health insurance and managed care organizations, etc.).

**Required Documentation** The Notice provides that a hospital organization will be required to separately document the CHNA for each of its hospital facilities in a **written report** that includes

the following information: 1) a description of the community served by the facility and how the community was determined; 2) a description of the process and methods used to conduct the CHNA; 3) the identity of any and all organizations with which the organization collaborated and third parties that it engaged to assist with the CHNA; 4) a description of how the organization considered the input of persons representing the community (e.g., through meetings, focus groups, interviews, etc.), who those persons are, and their qualifications;

5) a prioritized description of all of the community needs identified by the CHNA and an explanation of the process and criteria used in prioritizing such needs; and 6) a description of the existing health care facilities and other resources within the community available to meet the needs identified through the CHNA.

### **Making a CHNA Widely Available to the Public**

The Notice provides that a CHNA will be considered to be “**conducted**” in the taxable year that the written report of the CHNA findings is made **widely available to the public**. The Notice also indicates that the IRS intends to pattern its rules for making a CHNA “widely available to the public” after the rules currently in effect for Forms 990. *Accordingly, an organization would make a facility’s written report widely available by posting on its website either (1) the report itself, in a readily accessible format, or (2) a link to another organization’s website, along with instructions for accessing the report on that website. The Notice clarifies that an organization must post the CHNA for each facility until the date on which its subsequent CHNA for that facility is posted.*

### **How and When to Adopt an Implementation Strategy**

Section 501(r) requires a hospital organization to adopt an implementation strategy to meet the needs identified through each CHNA. **The Notice defines an “implementation strategy” as a written plan that addresses each of the needs identified in a CHNA by either (1) describing how the facility plans to meet the health need, or (2) identifying the health need as one that the facility does not intend to meet and explaining why the facility does not intend to meet it.** A hospital organization may develop an implementation strategy in collaboration with other organizations, which must be identified in the implementation strategy. As with the CHNA, a hospital organization that operates multiple hospital facilities must have a separate written implementation strategy for each of its facilities.

Under the Notice, an implementation strategy is considered to be “**adopted**” on the date the strategy is approved by the organization’s board of directors or by a committee of the board or other parties legally authorized by the board to act on its behalf. Further, the formal adoption of the implementation strategy must occur by the end of the same taxable year in which the written report of the CHNA findings was made available to the public. For hospital organizations with a June 30 fiscal year end, that effectively means that the organization must complete and appropriately post its first CHNA no later than its fiscal year ending June 30, 2013, and formally adopt a related implementation strategy by the end of the same tax year. *This final requirement may come as a surprise to many charitable hospitals, considering Section 501(r) contains no deadline for the adoption of the implementation strategy.*

## II Methodology

### b) Collaborating CHNA parties

Working together to improve community health takes collaboration. Listed below is an in depth profile of the local hospital & Health Department CHNA partners:

#### **Phillips County Hospital Profile**

**1150 State St., Phillipsburg, KS, 67661**

**Administrator: Dave Engel [dengel@phillipshospital.org](mailto:dengel@phillipshospital.org)**

**History:** Phillips County Hospital – Phillips County is a member of the Great Plains Health Alliance. The facility was built in 1953 and has undergone numerous renovations since then. The Long Term care unit was added in 1969; additionally cardiac monitors, a defibrillator, and paging system were introduced in 1970. Thirty years after being built the facility underwent a major expansion project – adding a physical /respiratory therapy area, lab, x-ray, surgical, labor room, and other needed additions. Most recently the Outpatient clinic was updated. Presently, Phillips County Hospital is a not-for-profit hospital with 25-beds and emergency services.

**Mission Statement:** Our mission is to create a healthcare hub of stability and success while providing quality and compassionate care for Phillips County and surrounding communities.

**Vision:** n/a

**Phillips County Hospital offers** the following services to its community:

- Cardiac Rehabilitation
- Laboratory (CLIA accredited)
  - o Certified Pathologist
- Cardiology
- Neurosurgery
- Oncology
- Orthopedics
- Podiatry
- Urology
- Ophthalmology
- General Surgery
- Radiology
  - o Diagnostic, Fluoroscopy exams, CT, Ultrasound, Sonograms, Echo, Vascular, Nuclear Medicine, Mammography, MRI, Dexa scans, and EKGs.
- Rehabilitation Department
  - o Occupational Therapy
  - o Speech Language Pathology (SLP)
  - o Physical Therapy

**Statistics and Staff:** In the 2010 fiscal year Phillips County Hospital had 114 employees; of which the facility has 17 registered nurses, 10 licensed practical nurses, and 7 certified nurse aides. It was reported in July 2011 that the facility had 462 admissions, 23,667 outpatient visits, 48 inpatient surgeries, and 1,351 Emergency room visits.

Phillips County Hospital works closely with its community partners – Phillips County Medical Clinic and Logan Medical Clinic - to identify the needs of the citizens, as defined by the citizens themselves and the organizations that address the concerns. Phillips County compared to the surrounding counties (that also have citizens who access health care locally) is more densely populated than other counties in the NW KS region. The per capita income is \$22,388 (2009 dollars) and 10.4% of all the citizens are living below the poverty level.

## **Phillips County Health Department Profile**

**784 6<sup>th</sup> St., Phillipsburg, KS, 67661**

**Administrator: Louetta Forell, RN**

The Phillips County Health Department is open Monday through Friday from 8:00 am to 5:00 pm (closed during lunch and Thursday afternoons). The Phillips County Health Department is part of the Local Environmental Protection Program funded by the Kansas Water Plan, as part of this group the primary focus is Sanitary Code enforcement and compliance. The health department also offers WIC services.

**Offerings:** Immunizations, blood pressure checks, ear washes, blood sugar checks, urinalysis, foot care, hemoglobin checks, Tympanograms, Farm Worker program, Maternal-Infant program, health education classes/presentations, communicable disease surveillance, disaster/ emergency planning, STD detection and treatment, and county health home visits with therapy services. private pay home visits, wellness checks, pregnancy testing and glucose checking.

Immunizations: Hepatitis A & B, Tuberculosis testing and treatment, flu shots, Pneumovax, Gardasil vaccine for male & female patients and childhood/adult immunizations.

Early Detection: Well child physicals, vision screens, Free to Know Cancer screening, and Healthy Start.

**Mission:** To evaluate, monitor, protect, restore, and/or improve the health of population groups within the county by providing health services, environmental services, and educational services to maintain and promote a healthy lifestyle for individuals, families, and communities.

**Accreditation:** Phillips County Health Department is considering accreditation.

---

### **Phillips County Health Department**

784 6th Street

Phillipsburg KS 67661-1939

**Phone:** 785-543-6850

**FAX:** 785-543-6852

**E-mail:** [adminpchd@ruraltel.net](mailto:adminpchd@ruraltel.net)

**Regional District Office:** NW

### **Administrator:**

Louetta Forell, RN

### **Health Officer**

Louetta Forell, RN

### **Medical Consultant:**

**Ben Stephenson, MD**

**Trauma Region NW**

## Sec II

### b2\_ Consultant Qualifications



#### **VWV Research & Development, Inc.**

Company Profile: 601 N. Mahaffie, Olathe, KS 66061-6431 (913) 302-7264

#### **VINCE VANDEHAAR, MBA**

##### **Principal Consultant & Owner of VWV Research & Development, Inc.**

VWV Research & Development, Inc. was incorporated on May 28<sup>th</sup> 2009. With over 30 years of business & faculty experience in helping both providers, payors, and financial service firms obtain their strategic planning, research & development needs, Vince brings in-depth health industry knowledge, research aptitude, planning expertise, and energy. VWV Research & Development services are organized, formal processes of listening to the voice of the customer. Vince started his consulting business in May of 2009, after working for Saint Luke's Health System (SLHS) of Kansas City for 16 years. Note: Saint Luke's Hospital of Kansas City, SLHS's largest hospital, won the Malcolm Baldrige National Quality Award in March of 2003. The Baldrige examiners cited Vince's department as "Best Practice" in the areas of customer satisfaction, market research, and evaluation efforts (Kansas City Star 3/10/04).

**VWV Research & Development, INC. (Olathe, KS)** consultants have in-depth experience helping hospitals work with local Health Departments to engage community residents & leaders to identify gaps between existing health community resources & needs, and construct detailed strategies to meet those needs - while still adhering to the hospital's mission and budget. Over the past 20 years, Vandehaar has completed 8 comprehensive Baldrige aligned Community Health Needs Assessments for Saint Luke's of Kansas City System facilities (3 campuses) and was contracted to conduct 2 additional independent Dept. of Health consulting projects (prior to IRS 990 regs). Currently in 2012, VWV has 12 CHNA IRS aligned assessments underway for Kansas hospitals & Health Departments.

Vince Vandehaar, MBA is actively involved in the Kansas City community. He is a member the Greater Kansas City Employee Benefits Association, the Society for Healthcare Strategy & Market Development, the American Marketing Association Kansas City Chapter, and Co-Chair of the AMA Kansas City Healthcare Special Interest Group. In addition to these roles, from 2000 to 2008, Vince served as the state chairman for MHA's Data Committee and was a member of KHA's Data Taskforce.

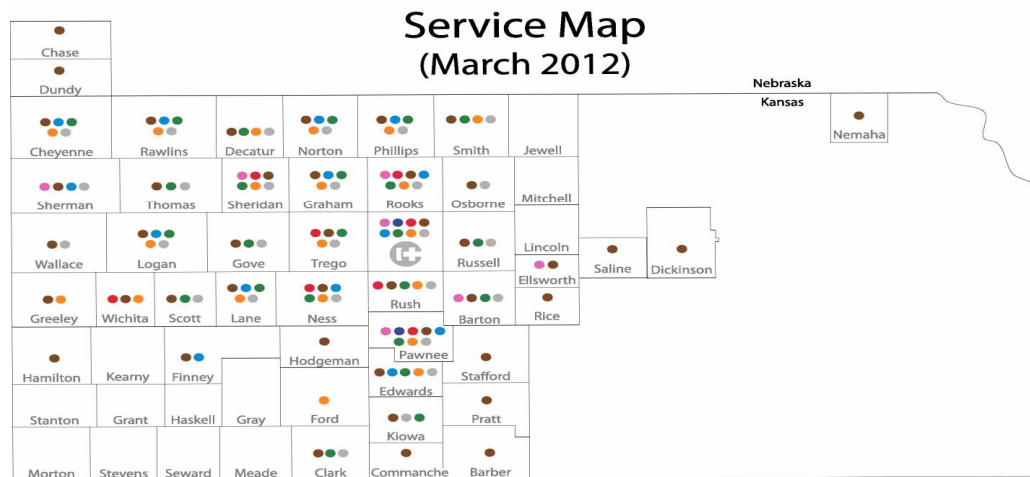
#### **Collaborating Consultants**

Megan Carollo, MBA - VWV Research & Development, Inc.  
Lead Project Coordinator & Planning Analyst

## II. Methodology

### c) CHNA & Town Hall Research Process

Our Community Health Needs Assessment process began in the fall of 2011. At that time an inquiry by Hays Medical Center (Hays, KS) to all NW KS Alliance Network member hospitals was communicated to explore the possibility of a “group buy” to meet IRS CHNA requirements. (Note: Most NW KS Alliance Network hospitals work closely with Hays Medical (see map below) to provide onsite IT, Telemedicine, Mobile Radiology, Bio-Medical services. In addition, many Hays based specialists will travel to neighboring counties to provide visiting outreach clinics.)



In late November of 2011 a meeting was called (hosted) by Hays Medical to learn more from the NW Alliance members (24) regarding their CHNA needs and to review the possible CHNA collaborative options. VVV Research & Development INC. from Olathe, KS was asked to facilitate this discussion with the following agenda: VVV Research CHNA experience, review CHNA requirements (regulations), discuss CHNA steps/options to meet IRS requirements, and to discuss the next steps.

#### **VVV CHNA Deliverables:**

- Uncover/Document Basic Secondary Research – Health of County. Organized by 10 TABS.
- Conduct Town Hall Meeting to discuss Secondary data and uncover/prioritize County Health Needs
- Conduct & Report Primary Research (valid N) - if elected by client.
- Prepare & Publish IRS aligned CHNA report to meet requirements

## VVV Alliance CHNA Hospital Work Plan

### Project Timeline & Roles 2012

Step	Date (Start-Finish)	LEAD	Task
1	THURS 12/29/2011	VVV / Alliance	Hold Kickoff Conference call (9 hospitals).
2	Due by 1/5/12	VVV	Buy Household 4 counties PO box file 5,600 names.
3	Due by Mon 1/9	VVV	Prepare Draft Paper/online CHNA survey. Send out online link Mon 1/9 for review.
4	Due by Mon 1/9	VVV	Finalize CHNA Basic Info categories on Basic_CHNAInfo_HospXXX.xls
5	Due by Friday 1/13/12. Send xls to VVV	All CHNA Hospitals (10)	Create Name/Address file of CHNA local participants (one per hospital) Determine interest level of area healthcare leaders.
6	Due by Friday 1/13/12. Send xls to VVV	All CHNA Hospitals (10)	Find KHA CD's. Send copy of Hospital report (documentation patient draw PSA) 2010 IP/OP reports PO101E, PO202E, PO103zip, OP TOT223E.
7	Friday 1/13/12	VVV / Alliance	Hold 2nd Conference call (4 Basic Plus hospitals ONLY) Review and update paper/online survey.
8	Friday 1/13/12	VVV / Alliance	Prepare/send out PR story to local media announcing upcoming Town Halls plus survey (4).
9	Due by Friday 1/27/12	VVV	Prepare 10 unique files of Basic_CHNAInfo_HospXXX. Start to collect Community Resource data.
10	Friday 1/27 & Monday 1/30	VVV / Alliance	Call EACH CHNA hospitals (9). Review Secondary Health Info Data items for your PSA. Call times TBD.
11	Surveys Out 1/16 - Due back by Friday FEB 10th CUTOFF	VVV	FIELD WORK 4 CHNA Basic plus hospitals: Mail CHNA Primary Research (Paper survey with online link) to PSA residents. Send 5600 - want 1,400 returns.
12	Friday 1/30/12 (2 weeks prior to meeting)	All CHNA Hospitals (10)	Prepare/send out Community TOWN HALL invitees to REQUIRED local list (Each hospital will use your data file and use VVV letter on your letterhead).
13	Mon 2/13 11:30-1pm, Mon 2/13 Dinner 5:30-7pm, Tues 2/14 Breakfast 7:30-9am & Tues 2/14 Lunch 11:30-1pm.	VVV / Alliance	TRIP #1 Town Halls. Visit, in order: (1) Norton County MON 2/13 - Lunch (2) Phillipsburg County MON 2/13 - Dinner and (3) Quinter County TUES 2/14- Breakfast. Conduct Community Roundtables - Review Basic CHNA info RANK priorities.
14	Mon 2/20 11:30-1pm, Mon 2/20 Dinner 5:30-7pm & Tues 2/21 Coffee 9-10:30am	VVV / Alliance	TRIP #2 Town Halls: Visit, in order:(1) Pawnee Valley MON 2/20 - Lunch (2) Clara Barton MON 2/20 - Dinner (3) Kiowa County Memorial TUES 2/21- Coffee 9am. Conduct Community Roundtables - Review Basic CHNA info RANK priorities.
15	Mon 3/5 Breakfast 7:30-9am, Lunch 11:30-1pm, Mon 3/5 Dinner 5:30-7pm & Tues 3/6 Breakfast 7:30-9am and Linch 11:30-1pm.	VVV / Alliance	TRIP #3 Town Halls: Visit, in order: (1) Decatur County Mon3/5 Breakfast, (2) Colby County MON 3/5 - Lunch (3) WaKeeney County MON 3/5 - Dinner (4) Hays County TUES 3/6 - Breakfast/Lunch. Conduct Community Roundtables - Review Basic plus CHNA info RANK priorities.
16	On or before 4/20/12	VVV	Complete Analysis - Release Draft 1- seek feedback from County Leaders (Hospital & Health Dept.)
17	On or before 5/15/12	VVV	Produce & Release 9 CHNA reports (per community) Post online 9 CHNA.
18	After 5/15/12	All CHNA Hospitals (10)	Hold Board Meetings discuss CHNA needs, adopt an implementation strategy and communicate YOUR plan.



To meet IRS aligned CHNA requirements, a *four-phase methodology* was reviewed and approved as follows:

**Phase I – Discovery:** Conduct a 30 minute conference call with each CHNA hospital client and County Health Department. Review and confirm CHNA calendar of events. Explain and coach client to complete required participant database. In addition, schedule and organize 2-3 two day work trips to NW KS to conduct primary research recorded in Phase II activities.

**Phase II – QUALIFY Community Need:**

A) Conduct in depth secondary research to uncover the following historical community health status. Use KS Health Matters, a joint venture between KHA and KHDE, Vital Statistics, County Health Rankings, etc. to document “current state” of county health organized as follows:



<b>TAB 1. Demographic Profile</b>
<b>TAB 2. Economic/Business Profile</b>
<b>TAB 3. Educational Profile</b>
<b>TAB 4. Maternal and Infant Health Profile</b>
<b>TAB 5. Hospitalization / Providers Profile</b>
<b>TAB 6. Behavioral Health Profile</b>
<b>TAB 7. Risk Indicators &amp; Factors</b>
<b>TAB 8. Uninsured Profile</b>
<b>TAB 9. Mortality Profile</b>
<b>TAB 10. Preventative Quality Measures</b>

B) Conduct primary research (if so elected) to uncover public health needs, practices and perceptions for hospital primary service areas. Both mail/online surveys are recommended with a survey response of 250 household or more.

**Phase III – QUANTIFY Community Need:** Conduct 90 minute Town Hall meeting at each county location. Each meeting reviews the CHNA secondary data, facilitated group discussion, and conducted a group ranking activity to determine the most important community health needs.

**Phase IV - Complete data analysis & create comprehensive Community Health Needs Assessment.** Post CHNA report findings to meet IRS CHNA criteria.

After consideration of NW KS Alliance CHNA “group buy”, the sponsoring hospital in collaboration with local Health Department chose the CHNA Basic option with the following project schedule:

Phase I: Discovery.....	Jan 2012
Phase II: Secondary / Primary Research.....	Jan - Feb 2012
Phase III: Town Hall Meeting.....	March 5, 2012
Phase IV: Prepare / Release CHNA report.....	April-May, 2012

Detail CHNA research & development steps are as follows;

	<b>Suggested Development Steps</b>
<b>Step # 1 Commitment</b>	<b><i>Determine interest level of area healthcare leaders (Hospital, Health Dept, Schools, Churches, Physicians etc), hold community meeting.</i></b>
<b>Step # 2 Planning</b>	<b><i>Prepare brief Community Health Needs Assessment Plan - list goals, objectives, purpose, outcome, roles, community involvement, etc. Hold Community Kick-off meeting.</i></b>
<b>Step # 3 Secondary Research</b>	<b><i>Collect &amp; Report Community Health Published Facts. Gather data health practice data from published secondary research sources i.e. census, county health records, behavioral risk factors surveillance, etc.</i></b>
<b>Step # 4a Primary Research</b>	<b><i>Conduct Community Roundtable (Qualitative Research). Review Secondary Research (Step3) with Community Stakeholders. Gather current opinions and identify health needs.</i></b>
<b>Step # 4b Primary Research &lt;Optional&gt;</b>	<b><i>Collect Community Opinions. (Quantitative Research). Gather current opinions (Valid sample size) regarding community health needs and healthcare practices. If appropriate, conduct Physician Manpower Assessment to determine FTE Physician need by specialty.</i></b>
<b>Steps # 5 Reporting</b>	<b><i>Prepare/Present comprehensive Community Health Needs Assessment report (to community leaders) with Recommended Actions to improve health . &lt; Note: Formal report will follow IRS Notice 2011-52 regs &gt;</i></b>
	<b>VVV Research &amp; Development INC 913 302-7264</b>

## **Overview of Town Hall Community Priority Setting Process**

Each community has a wealth of expertise to be tapped to conduct the CHNA. For this purpose, Town halls are the perfect forum to gather community insight. Town Hall sessions were organized to provide an objective consensus building method of reviewing and prioritizing county health issues. All Town Hall priority-setting and scoring processes involved the input of key stakeholders in attendance.

The individuals and organizations comprising the Town Halls were critically important to the success of the CHNA. The following list outlines partners invited to Town Hall: local hospitals, public health community, mental health community, free clinics, community-based clinics, service providers, local residents, community leaders, opinion leaders, school leaders, business leaders, local government, faith-based organizations and persons (or organizations serving them), people with chronic conditions, uninsured community members, low income residents, and minority groups.

Phillip County's Town Hall was held over dinner on Monday February 13<sup>th</sup>, 2012 in the main building of the Phillips County Fairgrounds. Vince Vandehaar and Megan Carollo facilitated this 1 ½ hour session with seventy (70) community attendees. (Note detail roster of Town Hall attendees is listed in Section V a) The following agenda was followed:

1. Welcome & Introductions
2. Purpose for the CHNA Town Hall and roles in the process
3. Presentation / Review of historical County Health Indicators (10 TABS)
4. Facilitate Town Hall discussion of data (probe health strengths / concerns). Reflect on size and seriousness of any health concerns sited and discuss current community health strengths.
5. Identify and rank top community health concerns. Encourage all Town Hall participants to vote (using 4 dots to cast votes) on priority issues.
6. Close meeting by reflecting on the health needs / community voting results.

(Note: At the end of each Town Hall session, VV encouraged all community members to continue to contribute ideas by going online and taking CHNA Additional Thoughts feedback survey.)

To review Town Hall discussion content, the next 4 pages document the Town Hall presentation and flow of public conversations. In addition, an example of the CHNA Additional Thoughts online feedback survey is provided.

## Community Health Needs Assessment Phillips County KS Town Hall Meeting

Vince Vandelaar, MBA  
VVV Research & Development INC.  
Owner and Adjunct Marketing Professor

Olathe, Kansas 66061  
vmlvandelaar@aol.com

<http://sites.google.com/site/vvvresearchdevelopment/>  
Blackberry: 913-302-7264

## Community Health Needs Assessment (CHNA) Town Hall Discussion Agenda

- I. Opening / Introductions (10 mins)
- II. Review CHNA Purpose & Process (10 mins)
- III. Review Current County "Health Status" –  
Secondary Data by 10 TAB Categories (25 mins)
- IV. Collect Community Health Perspectives , Ask your  
opinion. (20 mins)
- V. Community Health Voting Activity: Determine  
MOST Important Health areas (20 mins)
- VI. Close / Next Steps (5 mins)

VVV Marketing & Development INC. Oct 2011

### I. Introduction:

Background and Experience



Vince Vandelaar MBA, VVV Marketing & Development INC  
Principal Consultant, Olathe, KS 913 302-7264

- > – Professional Consulting Services: Strategic Planning, Marketing Management, Business Research & Development Focus : Strategy , Research , Deployment
  - > – Over 25 years of experience with Tillinghast, BCBSKC, Saint Luke's
- Adjunct Professor - Marketing / Health Admin.- 24 years +
- > Webster University (1988 – present)
  - > Rockhurst University (2010 – present)

Megan Carollo MBA, Business Development  
Analyst

### I. Introductions: a conversation with the community.

*Community members and organizations invited to CHNA Town Hall*

**Consumers:** Uninsured/underinsured people, Members of at-risk populations, Parents, caregivers and other consumers of health care in the community, and Consumer advocates.

**Community leaders and groups:** The hospital organization's board members, Local clergy and congregational leaders, Presidents or chairs of civic or service clubs – Chamber of Commerce, veterans' organizations, Lions, Rotary, etc., Representatives from businesses – owners/CEO's of large businesses (local or large corporations with local branches), Business people & merchants (e.g., who sell tobacco, alcohol, or other drugs), Representatives from organized labor, Political, appointed and elected officials., Foundations., United Way organizations. And other "community leaders."

**Public and other organizations:** Public health officials, Directors or staff of health and human service organizations, City/Community planners and development officials, Individuals with business and economic development experience, Welfare and social service agency staff, Housing advocates - administrators of housing programs: homeless shelters, low-income-family housing and senior housing, Education officials and staff - school superintendents, principals and teachers, Public safety officials, Staff from state and area agencies on aging, Law enforcement agencies - Chiefs of police, Local colleges and universities, Coalitions working on health or other issues.

**Other providers:** Physicians, Leaders in other not-for-profit health care organizations, such as hospitals, clinics, nursing homes and home-based and community-based services, Leaders from Catholic Charities and other faith-based service providers, Mental health providers, Oral health providers, Health insurers, Parish and congregational nursing programs, Other health professionals

## Town Hall Participation (You)

- ALL attendees welcome to share.
  - Parking Lot
- There are no right or wrong answers.
- Only one person speaks at a time.
- Please give truthful responses.
- Have a little fun along the way.

## II. Purpose: Why conduct Community Health Needs Assessment?

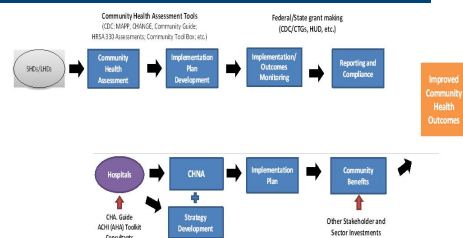
- To determine health-related trends and issues of the community.
- To understand/evaluate health delivery programs in place.
- To develop strategies to address unmet health needs.
- To meet Federal requirements – both local hospital & Health Department.

## II. Review CHNA Definition

A Community Health Needs Assessment (CHNA) is a systematic collection, assembly, analysis, and dissemination of information about the health of the community. *<NOTE: Some the data has already been collected (published) by local, state and federal public health organizations. Some data will be collected today.>*

CHNA's role is to identify factors that affect the health of a population and determine the availability of resources to adequately address those factors.

## Community Health Needs Assessment Joint Process: Hospital & Health Department



## II. Required Written Report IRS 990 Documentation .....

- a description of the community served
- a description of the CHNA process
- the identity of any and all organizations & third parties which collaborated to assist with the CHNA;
- a description of how the organization considered the input of persons representing the community (*e.g., through meetings, focus groups, interviews, etc.*), who those persons are, and their qualifications;
- a prioritized description of all of the community needs identified by the CHNA and
- a description of the existing health care facilities and other resources within the community available to meet the needs identified through the CHNA.

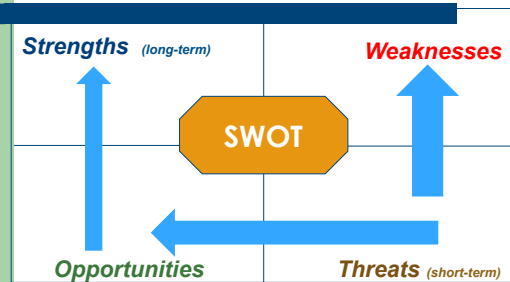
## III. Review Current County "Health Status" – Secondary Data by 10 TAB Categories

TAB 1. Demographic Profile
TAB 2. Economic/Business Profile
TAB 3. Educational Profile
TAB 4. Maternal and Infant Health Profile
TAB 5. Hospitalization / Providers Profile
TAB 6. Behavioral Health Profile
TAB 7. Risk Indicators & Factors
TAB 8. Uninsured Profile
TAB 9. Mortality Profile
TAB 10. Preventative Quality Measures

## IV. Collect Community Health Perspectives Ask your opinion. Your thoughts?

- ❑ Today: What are the *strengths* of our community that contribute to health
- ❑ Today: Are there healthcare services in your community / neighborhood that you feel *need to be improved and / or changed*?
- ❑ Tomorrow: What is occurring or might occur *that affects the health of our community*?

## SWOT Development



## V. Determine MOST Important Health Areas to Improve/Change. You Pick Top 4 (Others ?)

- |                                |                                    |
|--------------------------------|------------------------------------|
| a. Aging Services              | m. Hospice                         |
| b. Chronic Pain Management     | n. Hospital Services               |
| c. Dental Care/Oral Health     | o. Maternal, Infant & Child Health |
| d. Developmental Disabilities  | p. Nutrition                       |
| e. Domestic Violence,          | q. Pharmacy Services               |
| f. Early Detection & Screening | r. Primary Health Care             |
| g. Environmental Health        | s. Public Health                   |
| h. Exercise                    | t. School Health                   |
| i. Family Planning             | u. Social Services                 |
| j. Food Safety                 | v. Specialty Medical Care Clinics  |
| k. Health Care Coverage        | w. Substance Abuse                 |
| l. Health Education            | x. Transportation                  |
| m. Home Health                 | y. Other _____                     |
|                                | z. Other _____                     |

## Community Health Needs Assessment

### Questions Next Steps ?

VVV Research & Development INC.

[vmlvandehaar@aol.com](mailto:vmlvandehaar@aol.com)

913 302-7264

## Kansas Health Topics

Health, Economy, Education, Environment,  
Government & Politics, Public Safety,  
Social Environment, Transportation, Hospital, Physicians  
Access to HC, Alternative Medicine, Cancer, Children's  
Health, Co Health Rankings  
Diabetes, Disabilities, Occupational Health,  
Exercise, Nutrition, & Weight, Heart & Stroke,  
Immunizations, Mental Health, Mortality, BMI etc.....

## CHNA SWOT Activity

- **OPPORTUNITIES** – Areas that are favorable and/or advantageous to business. (*internal and/or external areas that are growing, changing, shifting and/or developing.*)
- **THREATS** – Areas of possible danger that could damage business, if not managed / handled well. (*internal and/or external areas that are growing, changing, shifting, developing etc.*)

**BREAK into Work Groups:** (3-5 members each)

**A. Identify TOP 3 Opportunities** (Use WHITE 3X5 cards)

**B. Identify TOP 3 Threats** (Use COLOR 3X5 cards)

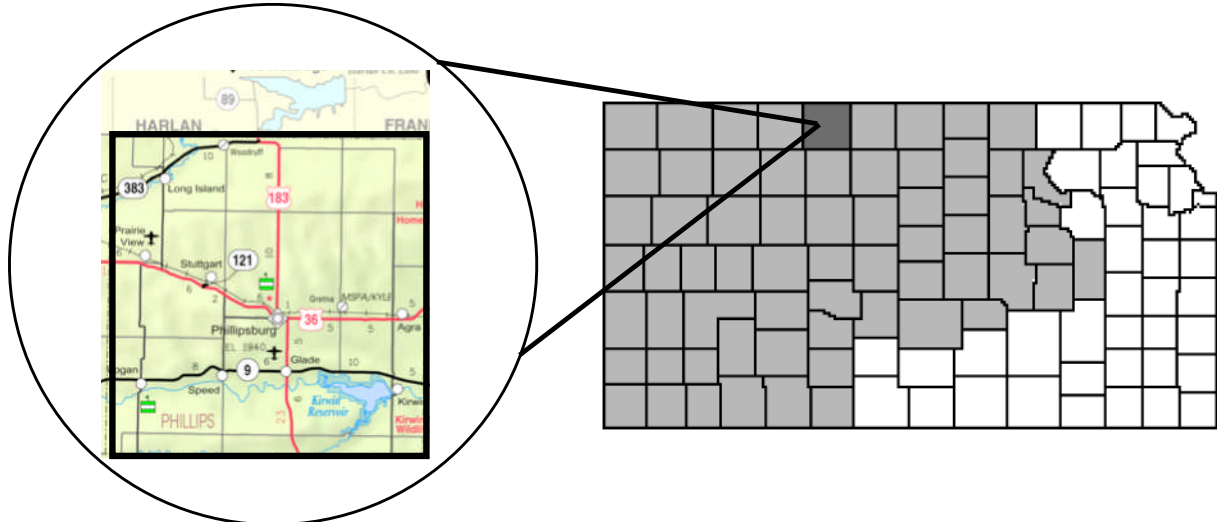
**Share Work Group: IDEAS / Identify Common Themes.**

## II Methodology

### d) Community Profile (Demographic/Economics)

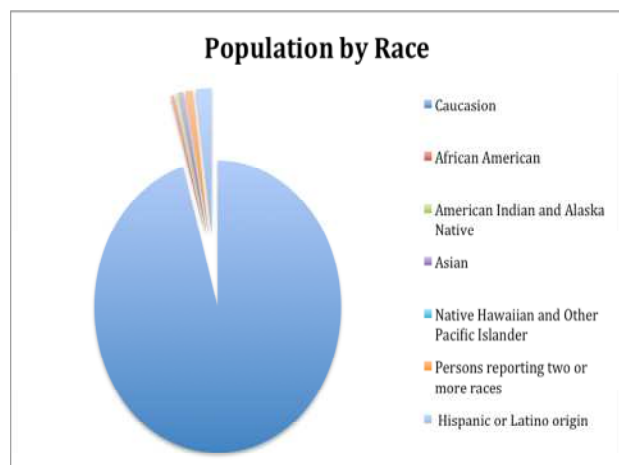
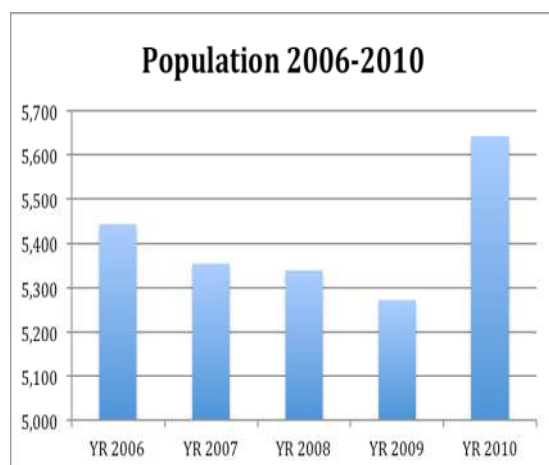
A description of community served

#### Phillips County Community Profile



#### Demographics

The population of Phillips County was estimated to be 5,642 citizens in 2010, and had a 3.6% change in population from 2006 – 2010. The county covers 885.8 square miles and this area includes 11,000 acres of Kirwin National Wildlife Refuge<sup>1</sup>. The county has an overall population density of 6.4 persons per square mile, compared to the State average of 34.9 persons per square mile. The county is located in north central Kansas on the border of Nebraska and agriculture, forestry, fishing, hunting, petroleum and coal products, construction, educational services, and truck transportation are the most common industries in its economy<sup>2</sup>. The county was founded in 1872 and the county seat is Phillipsburg<sup>3</sup>.



<sup>1</sup> <http://www.phillipsburgks.us/community/recreation/recreation.htm>

<sup>2</sup> [http://www.city-data.com/county/Phillips\\_County-KS.html](http://www.city-data.com/county/Phillips_County-KS.html)

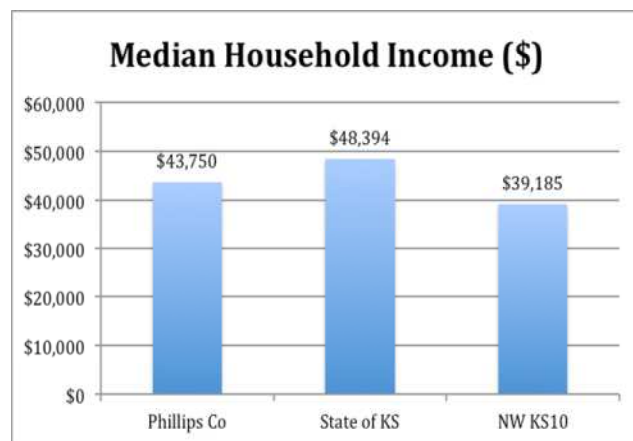
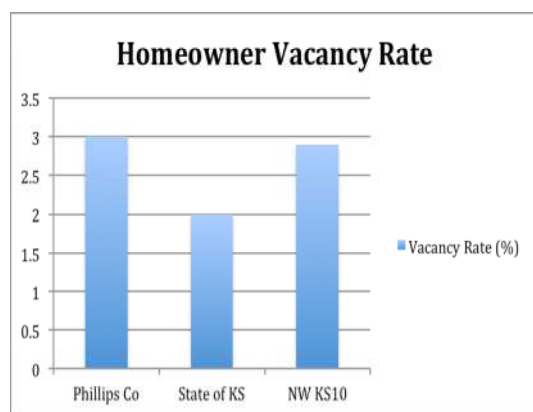
<sup>3</sup> <http://www.skyways.org/counties/NT/>



The most populous communities of the region are Phillipsburg (2,668), Logan (603) and Agra (306)<sup>4</sup>. These three cities comprise roughly 63% of the County's total population and are less than 25 miles apart from each other.

**The major highway transportation** access to Phillips County is primarily state and county roads. Kansas highway 183 runs North–South through the center of the county and Kansas highway 36 runs East–West through the county. Kansas state highway 9 also runs through the southern part of the county. The major U.S. interstates, I-70 runs South of the county and Interstate 80 is North of the county running through Nebraska.

**Homeownership in Phillips County** is comparable to other counties in the region. Median price of an owner-occupied home in Phillips County is \$57,100– more than half the state median value of \$118,500. However, Phillips County has a homeownership rate of 78.7%, higher than both the state average (69.5%) and the NW Kansas region (71.9%). However, Phillips County's homeowner vacancy rate (3%) is slightly higher than the state average (2%) and NW Kansas Region (2.9%).



**Employment** in Phillips County results in a median household income only 9% lower than the state average, and 10% higher than the NW KS Region. The slight income difference between the county and the state is not validated by the average weekly wages; in Phillips County weekly wages were \$552 in June of 2011, 26% lower than the state weekly wage of \$754<sup>5</sup>. Private wage or salaried workers comprise 64% of the population; the remaining workforce is employed by the government (18%), self-employed / not incorporated (16%), or unpaid family work (1%)<sup>6</sup>. The percentage of unemployed workers in the civilian labor force in Phillips County is 4.5% compared to the state average unemployment rate of 7.0%<sup>7</sup>.

<sup>4</sup> <http://www.skyways.org/counties/NT/>

<sup>5</sup> <http://www.bls.gov/ro7/qcewks.pdf>

<sup>6</sup> [http://www.city-data.com/county/Phillips\\_County-KS.html](http://www.city-data.com/county/Phillips_County-KS.html)

<sup>7</sup> <http://www.ers.usda.gov/Data/Unemployment/RDLList2.asp?ST=KS>

## Detail Demographics - Phillips County

			Sq	Per	Total	Gender		Age Ranges				
ZIP	CITY	ST	Miles	Capita	Pop11	M	F	00-17	18-44	45-64	65-74	75Plus
	Phillips, KS		895	\$24,253	5016	2447	2569	1022	1374	1435	553	632
						49%	51%	20%	27%	29%	11%	13%
67661	PHILLIPSBURG	KS	340	\$26,847	2878	1373	1505	547	790	821	321	399
67646	LOGAN	KS	108	\$20,754	595	277	318	111	155	160	58	111
67621	AGRA	KS	131	\$18,203	532	269	263	138	154	160	46	34
67644	KIRWIN	KS	79	\$20,760	300	151	149	79	81	80	36	24
67639	GLADE	KS	118	\$22,149	259	145	114	47	66	80	42	24
67664	PRAIRIE VIEW	KS	77	\$24,498	248	123	125	50	66	73	33	26
67647	LONG ISLAND	KS	42	\$21,162	204	109	95	50	62	61	17	14
			Sq	Per	Total	Med	Moms	Ethnic		Insurance		
ZIP	CITY	ST	Miles	Capita	Pop11	Age	18-44	Hisp	White	MCare	Mcaid	No Ins
	Phillips, KS		895	\$24,253	5016	47	666	53	4873	1318	451	530
							13%	1%	97%	26%	9%	11%
67661	PHILLIPSBURG	KS	340	\$26,847	2878	48	389	37	2786	800	241	284
67646	LOGAN	KS	108	\$20,754	595	50	72	0	591	188	60	69
67621	AGRA	KS	131	\$18,203	532	41	70	5	523	89	73	83
67644	KIRWIN	KS	79	\$20,760	300	42	37	6	277	67	22	29
67639	GLADE	KS	118	\$22,149	259	49	30	0	256	74	26	32
67664	PRAIRIE VIEW	KS	77	\$24,498	248	48	35	4	244	65	14	17
67647	LONG ISLAND	KS	42	\$21,162	204	39	33	1	196	35	15	16

Source: Claritus

# **III. Community Health Status**

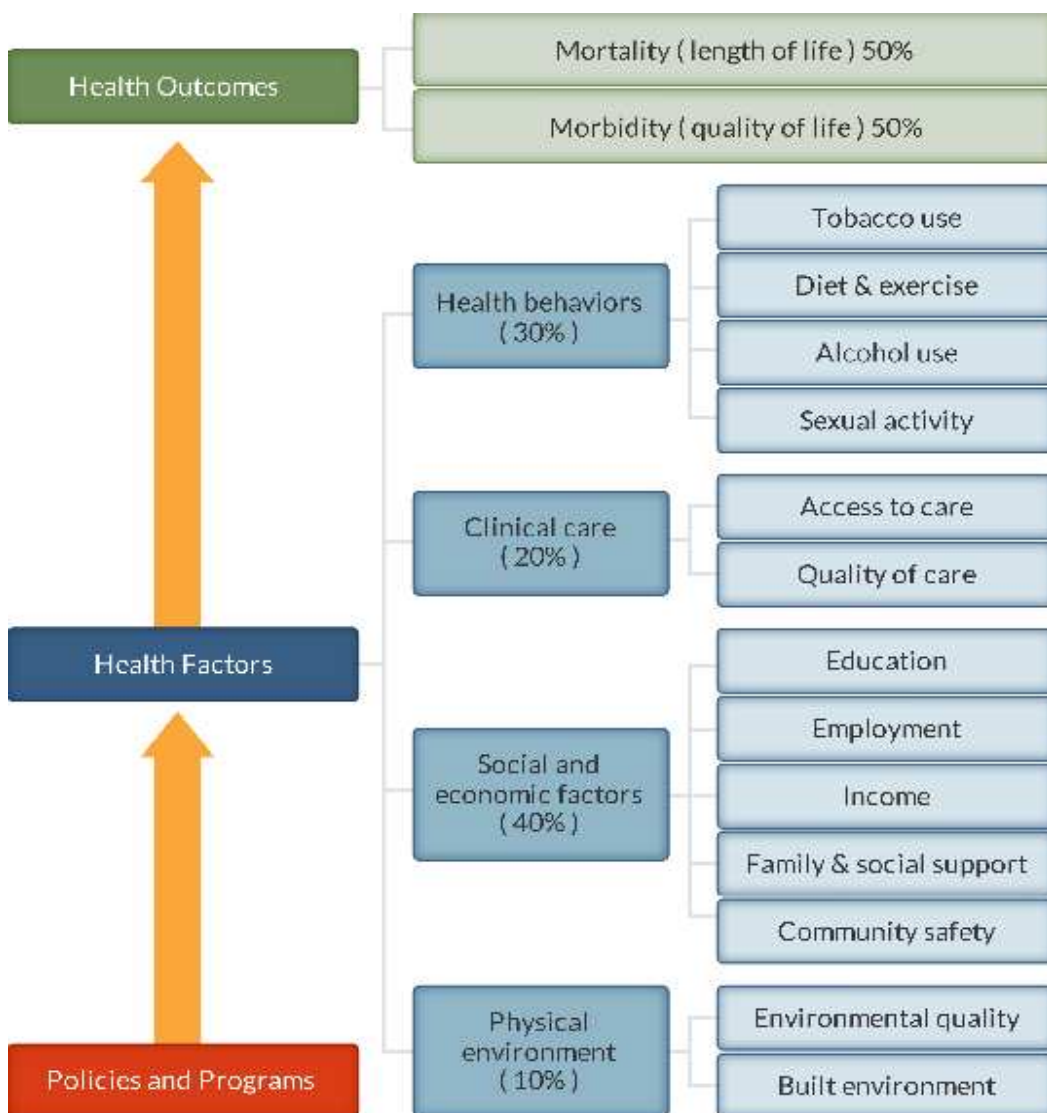
---

**[VVV Research & Development INC]**

**II. Community Health Status**  
**a. Historical Health Statistics**

**Health Status Profile – Phillips County KS**

This section of the CHNA reviews published quantitative community health indicators and results of our recent CHNA Town Hall. To produce this profile, VVV Research & Development staff analyzed data from multiple sources. This analysis focuses on a set of published health indicators organized by ten areas of focus (10 TABS), results from the 2012 County Health Rankings and conversations from Town Hall primary research. (Note: The Robert Wood Johnson Foundation collaborates with the University of Wisconsin Population Health Institute to release annual *County Health Rankings*. As seen below in model, these rankings are based on a number of health factors.)



## 2012 State Health Rankings for Phillips County, Kansas

	2012 KS Rank of 100 counties	Definitions	Phillips Co	Trend	NW KS10
a	Physical Environment	Environmental quality	72		56
b	Health Factors		34		38
	Clinical Care	Access to care / Quality of Care	48		53
	Social & Econ Factors	Education, Employment, Income, Family/Social support, Community Safety	14		35
c	Health Outcomes		17		45
	Health Behaviors	Tobacco Use, Diet/Exercise, Alcohol Use, Sexual Activity	64		48
	Morbidity	Quality of life	27		45
	Mortality	Length of life	15		38
<a href="http://www.countyhealthrankings.org">http://www.countyhealthrankings.org</a> Lower Rank is better					

One of the IRS CHNA requirements is to understand community health strengths and weaknesses. Below is a table documenting Town Hall healthcare areas of strength and weakness relating to availability, access, and/or quality.

Phillips Co KS (N = 33)	
Town Hall Strengths Cited	Town Hall Weaknesses Cited
Good care: Rehab, Doctors, Chiropractors, EMT, EMS, Nursing staff, Optometrist, Pharmacies, PT, volunteers, Outpatient clinic, and the city park.	Need for area: Dialysis, Chemo, Auditory Care, Pain Management, OB Services, Cardiac care, 2 General Practitioners, 2 Pediatricians, and a full-time surgeon.
Strong public leadership, Preventative – immunization of children. High community involvement i.e. health fairs, blood drives and food pantry/Meals on Wheels.	Elderly – desire more options/offereings in the form of Senior Sitting, Senior Care, and Home Health services.
Accessibility – minimal wait times in the ER and the weekend hours at the Clinic.	Need to retain doctors (longevity).
Wellness Center, new pool, and tennis courts	Issue with narcotic and prescription drug abuse.
County support from charitable grants.	Public uncertain of services offered locally, low community awareness.
Transportation- airport transporting patients out of the area.	Need for healthcare facilities to work together more cohesively.
The Retirement Center.	

During the course of our Town Hall meeting, participants had the opportunity to vote on what they felt needs additional attention to improve community health. (Note: Each individual was given four (4) votes to distribute across health topics cited.) Below is a ranking of Town Hall findings.

<b>Phillips County, KS Town Hall Community Health Needs N=70</b>			
<b>#</b>	<b>TOPIC</b>	<b>Votes</b>	<b>%</b>
<b>1</b>	Recruit Doctors (Primary Care, Peds, Surgeon, OB)	59	26.9%
<b>2</b>	Build cooperation between area healthcare providers	48	21.9%
<b>3</b>	Offer OB Services	27	12.3%
<b>4</b>	Expand Health Educational Programs	19	8.7%
<b>5</b>	Elderly Care (assistance)	18	8.2%
<b>6</b>	Substance Abuse	12	5.5%
<b>7</b>	Offer Dialysis Services	11	5.0%
<b>8</b>	Offer Chemo Therapy	11	5.0%
<b>9</b>	Prescription Financial Aid	10	4.6%
<b>10</b>	Expand Dental Services	4	1.8%
<b>TOTAL</b>		<b>219</b>	<b>100%</b>

Finally, after each Town Hall meeting, an online community survey asked residents to rate "Overall Health of County". Using a 5 point Likert scale, results are listed below:

<b>Overall Health of Community Town Hall Feedback</b>		
<b>County: Phillips N=69</b>		
<b>Score</b>	<b>Count</b>	<b>Percentage</b>
<b>Top 2 Boxes (5/4s)</b>	<b>33</b>	<b>47.8%</b>
<b>Bottom 2 Boxes (1/2's)</b>	<b>9</b>	<b>13.0%</b>
<b>5</b>	<b>12</b>	<b>17.4%</b>
<b>4</b>	<b>21</b>	<b>30.4%</b>
<b>3</b>	<b>22</b>	<b>31.9%</b>
<b>2</b>	<b>6</b>	<b>8.7%</b>
<b>1</b>	<b>3</b>	<b>4.3%</b>
<b>Blank</b>	<b>5</b>	<b>7.2%</b>
<b>TOTAL</b>	<b>69</b>	<b>100.0%</b>

## Secondary Research

When considering the state of community health, it's important to review published health data by topic area. Below is a summary of key TABS of information collected:

**Tab 1 & 2 Demographics/Economics**

#	Population History - Vital Statistics	% Change 2006-2010	YR 2006	YR 2007	YR 2008	YR 2009	YR 2010
1	Phillips County Population	3.6	5,444	5,356	5,339	5,272	5,642

#	People QuickFacts	Phillips Co	Trend	State of KS	NW KS10
1	Households, 2005-2009	2,355		1,093,694	38,022
2	Persons per household, 2005-2009	2.17		2.46	2.2
3	Per capita money income in past 12 months (2009 dollars) 2005-2009	\$22,388		\$25,522	\$20,798
4	Median household income, 2009	\$40,247		\$47,709	\$40,685
#	HealthMatters.com Categories	Phillips Co	Trend	State of KS	NW KS10
1	Ratio of Children to Adults (% children to adults)	29.2			27.8
2	Ratio of Elderly Persons to Adults (% elderly to adults)	36.2			31.1
3	Ratio of Elderly Persons and Children to Adults (% elderly / children to adults)	65.4			58.9
4	Voter Turnout (%)	68.6		72.3	71.2
5	People Living Below Poverty Level (%)	10.4		12.2	11.1
6	People Living 200% Above Poverty Level (%)	70.4		69.3	65.2
7	People 65+ Living Below Poverty Level (%)	6.9		8	8.0
8	People 65+ Living Alone (%)	23.5		29.6	27.9
9	Language other than English spoken at home, pct age 5+, 2005-2009	2.60%		9.90%	4.34%

Source U.S. Census Bureau: State and County QuickFacts. Data derived from Population Estimates, American Community Survey, Census of Population and Housing, Small Area Income and Poverty Estimates, State and County Housing Unit Estimates, County Business Patterns, Nonemployer Statistics, Economic Census, Survey of Business Owners, Building Permits, Consolidated Federal Funds Report

Business Quality Indicators www.healthmatters.com					
#	Business QuickFacts	Phillips Co	Trend	State of KS	NW KS10
1	Private nonfarm establishments, 2009	219		746,981	3,485
2	Private nonfarm employment, 2009	1,699		11,462,631	34,534
3	Private nonfarm employment, percent change 2000-2009	-1.40%		1.60%	
4	Nonemployer establishments, 2009	462		173,946	7,441
5	Total number of firms, 2007	641		237,040	10,138
6	Households with Public Assistance (%)	0.8		2.3	1.5
#	Business QuickFacts	Phillips Co	Trend	State of KS	NW KS10
1	Unemployed Workers in Civilian Labor Force (%)	4.5			3.7
2	Per Capita Income (\$)	\$22,388		\$25,522	\$20,798
3	Median Household Income (\$)	\$43,750		\$48,394	\$39,185
4	Mean Travel Time to Work (Minutes)	12.8		18.7	12.7
5	Average Monthly WIC Caseload (per 1,000 population)	28.4			25.4
#	Indicator <a href="http://www.countyhealthrankings.org">http://www.countyhealthrankings.org</a>	Phillips Co	Trend	State of KS	NW KS10
1	Children in poverty	16%		18%	17%
2	Fast food restaurants	56%		48%	45%

**Tab 3 Public Schools Health Delivery Profile.** Currently school districts are providing on site primary health screenings and basic care.

#	Indicators - local school reporting	Phillips Co			
1	Total # Public School Nurses	2			
2	School Nurse is part of the IEP team Yes/No	yes			
3	School Wellness Plan (Active)	yes			
4	VISION: # Screened / Referred to Prof / Seen by Professional	440 / 28 / 10			
5	HEARING: # Screened / Referred to Prof / Seen by Professional	440 / 12 / 18			
6	ORAL HEALTH: # Screened / Referred to Prof / Seen by Professional	444 / 102 / 17			
7	SCOLIOSIS: # Screened / Referred to Prof / Seen by Professional	40 / 0 / 0			
8	# of Students served with no identified chronic health concerns	608			
9	School has a suicide prevention program	no			
10	Compliance on required vaccinations (%)	<1%			
#	Healthmatters.com Categories	Phillips Co	Trend	State of KS	NW KS10
1	Student-to-Teacher Ratio (% Student / Teacher)	9.8		13.7	11.6
2	Students Eligible for the Free Lunch Program (%)	27.3			27.4
3	Poverty Status by School Enrollment (%)	9.4			5.7



**TAB 4 Maternal and Infant Health Profile.** Tracking maternal & infant care patterns are vital in understanding the foundation of family health.

#	Vital Statistics: Maternal and Infant Health Profile, 2010	Phillips Co	Trend	State of KS	NW KS10
1	Total Live Births, 2006	56		40,896	1,107
2	Total Live Births, 2007	57		41,951	1,196
3	Total Live Births, 2008	58		41,815	1,145
4	Total Live Births, 2009	53		41,388	1,193
5	Total Live Births, 2010	57		40,439	1,136
6	Total Live Births, 2006-2010 - Five year Rate (%)	10.4%		14.70%	
7	Low Weight Births (under 2,500 grams / 5 lb. 8 oz.)	13		9,961	191
8	Percent Premature (<37 weeks)	7.00%		8.8%	8.16%
9	Number of Stillbirths	1		168	3
10	Births with Prenatal Care in First 3 Months	43		29552	905
11	Percentage of Mothers Who Initiate Breastfeeding	84.2%		77.2%	80.8%
12	Mothers Who Smoke Any Time During Pregnancy	13		5919	194
13	Percentage of Mothers who Smoke Any Time During Pregnancy	26.0%		15%	18.6%

**TAB 5 Hospitalization/Provider Profile** Understanding provider access and disease patterns are fundamental in healthcare delivery. Listed below are several vital county statistics.

#	KS Hospital Assoc PO103	Phillips County Residents			
		FFY2008	FFY2009	FFY2010	Trend
1	Total Discharges	922	763	847	
2	Total IP Discharges-Age 0-17	58	50	30	
3	Total IP Discharges-Age 18-29	85	54	55	
4	Total IP Discharges-Age 30-44	175	156	174	
5	Total IP Discharges-Age 45-64	142	128	148	
6	Total IP Discharges-Age 65+	322	257	312	
7	Psychiatric	24	14	14	
8	Obstetric	60	52	60	
9	Newborn	56	52	54	
10	Surgical %	25.70%	30.10%	26.3%	

**TAB 5 Hospitalization/Provider Profile** (Continue)

#	HealthMatters.com Categories	Phillips Co	Trend	KS	NW KS10
1	Injury Hospital Admission Rate (per 100,000 pop)	389.99			820.9
2	Heart Disease Hospital Admission Rate (per 100,000 Pop)	238.22			338.6
3	Congestive Heart Failure Hospital Admission Rate (per 100,000 Pop)	261.09			277.7
4	Chronic Obstructive Pulmonary Disease (COPD) Hospital Admission Rate (per 100,00)	169.37			275.5
5	Bacterial Pneumonia Hospital Admission Rate (per 100,000)	598.19			662.3
6	Staffed Hospital Bed Ratio (per 1,000 Pop)	27.9			15.9
<a href="http://www.countyhealthrankings.org">http://www.countyhealthrankings.org</a>		Phillips Co	Trend	KS	NW KS10
1	Preventable hospital stays	71		70	114
2	Primary care physicians per 1	1761		857	1,072

**TAB 6 Social & Rehab Services Profile.** Behavioral health and rehabilitation care provide another important indicator of community health status. Below is a summary of the previous 3 years of assistance.

Source: Kansas Dept of Social & Rehab Services	Phillips						Trend
	Persons Served			Annual Service Dollars			
	FY 2009	FY 2010	FY 2011	FY 2009	FY 2010	FY 2011	
<b>Managed Behavioral Health Services</b>							
Substance Abuse (PIHP)	2	5	9	\$6,833	\$1,801	\$10,866	
Mental Health (PAHP)	143	132	160	\$216,654	\$218,257	\$211,267	
<b>Home and Community Based</b>							
Physical Disability	10	12	14	\$111,261	\$149,929	\$254,653	
Traumatic Brain Injury	0	1	0	\$0	\$45,546	\$0	
Developmental Disability	5	30	5	\$83,976	\$83,662	\$126,228	
Autism	0	0	0	\$0	\$0	\$0	
<b>Major Services (Average per Month)</b>							
Temporary Assistance for Families	40	39	40	\$49,097	\$47,374	\$47,484	
TANF Employment Services	12	15	17	\$4,583	\$9,845	\$11,470	
Child Care Assistance	20	24	26	\$51,921	\$59,850	\$61,677	
Food Assistance	229	320	381	\$252,234	\$412,779	\$485,974	

**TAB 7 Health Risk Profiles.** Knowing community health risk factors and disease patterns can aid in the understanding “next steps” to improve health. Being overweight/obese; smoking, drinking in excess, not exercising etc can lead to poor health.

	<a href="http://www.countyhealthrankings.org">http://www.countyhealthrankings.org</a>	Phillips	Trend	KS	NW KS10
1	Adult obesity	34%		30%	32%
2	Adult smoking	18%		18%	18%
3	Excessive drinking	19%		15%	13%
4	Inadequate social support	15%		16%	15%
5	Physical inactivity	27%		24%	28%
6	Poor mental health days	2.8		2.8	2.6
7	Poor physical health days	2.5		3.0	2.8
8	Sexually transmitted infections	131		375	171

#	HealthMatters.com Categories	Phillips Co	Trend	KS	NW KS10
1	Increased Lead Risk in Housing Rate (%)	51.59			43.0
2	Age-Adjusted Years of Potential Life Lost - Cancer (Yrs p/ 100,000 Pop)	698.3			1529.0
3	Age-Adjusted Years of Potential Life Lost - Cerebrovascular Disease (Yrs p/ 100,000 Pop)	183.7			152.2
4	Age-Adjusted Years of Potential Life Lost - Chronic Lower Respiratory Disease (Yrs p/ 100,000 Pop)	238.8			204.0
5	Age-Adjusted Years of Potential Life Lost - Diabetes	182.5			183.6
6	Age-Adjusted Years of Potential Life Lost - Heart Disease (Yrs p/ 100,000 Pop)	1016.4			1156.4
7	Age-Adjusted Years of Potential Life Lost - Nephritis, Nephrotic Syndrome Nephrosis (Yrs p/ 100,000 Pop)	475.5			219.7
8	Age-Adjusted Years of Potential Life Lost - Suicide	583.4			712.7
9	Age-Adjusted Years of Potential Life Lost - Traffic Injury	1527.2			1434.8
10	Age-Adjusted Years of Potential Life Lost - Unintentional Injuries (Yrs p/ 100,000 Pop)	1592.8			2158.5

**TAB 8 Uninsured Profiles.** Based on synthetic estimations, the number of insured is documented below. Also, the amount of charity care (last 3 years of free care) from area providers is trended below.

	Indicator <a href="http://www.countyhealthrankings.org">http://www.countyhealthrankings.org</a>	Phillips	Trend	KS	NW KS10
1	Uninsured	16%		15%	17%
#	Charity Care by Individual Facility	YR09	YR10	YR11	Trend
1	Local Hospital Charity Care/Bad Debt	\$429,940	\$254,521	\$272,453	

**TAB 9 Mortality Profile.** The leading causes of county deaths are listed below. Areas of higher than expected are so noted.

#	Causes of Death by County of Residence, KS 2010			
	Selected Causes of Death (ICD-10)	Phillips Co	Trend	KS
#	<b>TOTAL</b>	70		24,428
1	Major Cardio-vascular Disease	23		7,504
2	All Malignant Neoplasms	15		5,359
3	Disease of Heart	15		5,404
4	All Other Causes	11		3,961
5	Cerebrovascular Diseases	7		1,367
6	Ischemic Heart Disease	6		3,169
7	Malignant Neoplasms of Respiratory and Intrathoracic Organs	5		1,539
8	Other Heart Diseases	5		2,070
9	Alzheimer's Disease	4		816
10	Chronic Lower Respiratory Diseases	4		1,581
11	Hypertensive Heart Disease w, w/out Renal Disease	4		131
12	Other Malignant Neoplasms	4		1,138

#	HealthMatters.com Categories	Phillips Co	Trend	KS	NW KS10
1	Age-adjusted Alzheimer's Disease Mortality Rate per 100,000 population	NA		28.6	28.1
2	Age-adjusted Atherosclerosis Mortality Rate per 100,000 population	15		13.7	11.5
3	Age-adjusted Cancer Mortality Rate per 100,000 population	141.4		187.8	169.8
4	Age-adjusted Cerebrovascular Disease Mortality Rate per 100,000 population	33.0		47.9	43.7
5	Age-adjusted Chronic Lower Respiratory Disease Mortality Rate per 100,000 population	38.9		55.4	48.2
6	Age-adjusted Diabetes Mortality Rate per 100,000 population	31.8		23	30.5
7	Age-adjusted Heart Disease Mortality Rate per 100,000 population	188.2		189.4	180.7
9	Age-adjusted Mortality Rate per 100,000 population	718.3		856.1	778.5

**TAB 10 Preventive Health Profile.** The following table reflects future health of county. This information also is an indicator of community awareness of preventative measures.

	Indicator <a href="http://www.countyhealthrankings.org">http://www.countyhealthrankings.org</a>	Phillips	Trend	KS	NW KS10
1	Diabetic screening	80%		85%	82%
2	Limited access to healthy foods	13%		7%	10%
3	Mammography screening	71%		67%	68%
4	Poor or fair health (Self Assess)	15%		13%	11%

# **IV. Inventory of Community Health Resources**

---

**[VVV Research & Development INC]**

Inventory of Health Services - PHILLIPS County				
Cat	HC Services Offered in county: Yes / No	Hospital	HLTH Dept	Other
Clinic	Primary Care			
Hosp	Alzheimer Center			YES
Hosp	Ambulatory Surgery Centers			
Hosp	Arthritis Treatment Center			
Hosp	Bariatric/weight control services			
Hosp	Birthing/LDR/LDRP Room			
Hosp	Breast Cancer			
Hosp	Burn Care			
Hosp	Cardiac Rehabilitation	YES		
Hosp	Cardiac Surgery			
Hosp	Cardiology services	YES op		
Hosp	Case Management			
Hosp	Chaplaincy/pastoral care services	YES		
Hosp	Chemotherapy	YES		
Hosp	Colonoscopy	YES		
Hosp	Crisis Prevention			YES
Hosp	CTScanner	YES		
Hosp	Diagnostic Radioisotope Facility	x mobile		
Hosp	Diagnostic/Invasive Catheterization			
Hosp	Electron Beam Computed Tomography (EBCT)			
Hosp	Enrollment Assistance Services	YES		
Hosp	Extracorporeal Shock Wave Lithotripter (ESWL)			
Hosp	Fertility Clinic			
Hosp	FullField Digital Mammography (FFDM)	x mobile		
Hosp	Genetic Testing/Counseling			
Hosp	Geriatric Services	YES		
Hosp	Heart	x-consult		
Hosp	Hemodialysis			
Hosp	HIV/AIDS Services			
Hosp	Image-Guided Radiation Therapy (IGRT)			
Hosp	Inpatient Acute Care - Hospital services	YES		
Hosp	Intensity-Modulated Radiation Therapy (IMRT) 161			
Hosp	Intensive Care Unit			
Hosp	Intermediate Care Unit	YES		
Hosp	Interventional Cardiac Catherterization			
Hosp	Isolation room	YES		
Hosp	Kidney	x-consult		
Hosp	Liver			
Hosp	Lung			
Hosp	MagneticResonance Imaging (MRI)	x-mobile		
Hosp	Mammograms	x-mobile		
Hosp	Mobile Health Services	YES		
Hosp	Multislice Spiral Computed Tomography (<64 slice CT)	YES		
Hosp	Multislice Spiral Computed Tomography (<64+ slice CT)			
Hosp	Neonatal			
Hosp	Neurological services			
Hosp	Obstetrics			
Hosp	Occupational Health Services	x- O.T.		
Hosp	Oncology Services	x-consult		
Hosp	Orthopedic services	x-consult		
Hosp	Outpatient Surgery	YES		
Hosp	Pain Management			
Hosp	Palliative Care Program			
Hosp	Pediatric			
Hosp	Physical Rehabilitation	YES	YES	
Hosp	Positron Emission Tomography (PET)			
Hosp	Positron Emission Tomography/CT (PET/CT)			
Hosp	Pulmonary Rehab			
Hosp	Psychiatric Services	YES		

Inventory of Health Services - PHILLIPS County				
Cat	HC Services Offered in county: Yes / No	Hospital	HLTH Dept	Other
Hosp	Radiology, Diagnostic	YES		
Hosp	Radiology, Therapeutic	YES		
Hosp	Reproductive Health		YES	
Hosp	Robotic Surgery			
Hosp	Shaped Beam Radiation System 161			
Hosp	Single Photon Emission Computerized Tomography (SPECT)			
Hosp	Sleep Center			
Hosp	Social Work Services	YES		
Hosp	Sports Medicine			
Hosp	Stereotactic Radiosurgery			
Hosp	Swing Bed Services	YES		
Hosp	Transplant Services			
Hosp	Trauma Center			
Hosp	Ultrasound	x-mobile		
Hosp	Women's Health Services	YES	YES	
Hosp	Wound Care	YES	YES	
SR	Adult Day Care Program			YES
SR	Assisted Living			YES
SR	Home Health Services		YES	
SR	Hospice			YES
SR	LongTerm Care			
SR	Nursing Home Services			YES
SR	Retirement Housing			YES
SR	Skilled Nursing Care	YES		YES
ER	Emergency Services	YES		
ER	Urgent Care Center			
ER	Ambulance Services			YES
SERV	Alcoholism-Drug Abuse			
SERV	Blood Donor Center			x-mobile
SERV	Chiropractic Services			YES
SERV	Complementary Medicine Services	x- PAP		
SERV	Dental Services	YES		
SERV	Fitness Center			YES
SERV	Health Education Classes	YES	YES	
SERV	Health Fair (Annual)	YES	YES	
SERV	Health Information Center	YES		
SERV	Health Screenings	YES	YES	
SERV	Meals on Wheels			YES
SERV	Nutrition Programs	YES		
SERV	Patient Education Center	YES		
SERV	Support Groups	YES		
SERV	Teen Outreach Services			YES
SERV	Transportation to Health Facilities			YES
SERV	Wellness Program			YES
SERV	Tobacco Treatment/Cessation Program	YES		



## Physician Manpower - Phillips County KS

	Supply working in County		
	FTE County Based (MD/DO)	FTE Visting	PA/NP/CRNA/ALLIED
<b># of FTE Providers</b>			
<b>Primary Care:</b>			
Family Practice	0.00	2.00	2.00
Internal Medicine	0.00	0.00	0.00
Obstetrics/Gynecology	0.00	0.00	0.00
Pediatrics	0.00	0.00	0.00
<b>Medicine Specialists:</b>			
Allergy/Immunology	0.00	0.00	
Cardiology	0.00	0.10	
Dermatology	0.00	0.00	
Endocrinology	0.00	0.00	
Gastroenterology	0.00	0.00	
Oncology/RADO	0.00	0.10	
Infectious Diseases	0.00	0.00	
Nephrology	0.00	0.00	
Neurology	0.00	0.10	
Psychiatry	0.00	0.00	
Pulmonary	0.00	0.00	
Rheumatology	0.00	0.00	
<b>Surgery Specialists:</b>			
General Surgery	0.00	0.00	
Neurosurgery	0.00	0.00	
Ophthalmology	0.00	0.10	
Orthopedics	0.00	0.10	
Otolaryngology (ENT)	0.00	0.00	
Plastic/Reconstructive	0.00	0.00	
Thoracic/Cardiovascular/Vasc	0.00	0.10	
Urology	0.00	0.10	
Podiatry		0.10	
<b>Hospital Based:</b>			
Anesthesia/Pain	0.00	0.00	
Emergency	0.00	4.20	
Radiology	0.00	0.00	
Pathology	0.00	0.00	
Hospitalist *	0.00	0.00	
Neonatal/Perinatal	0.00	0.00	
Physical Medicine/Rehab	0.00	0.00	
<b>Others</b>			
	0.00	0.00	
	0.00	0.00	
<b>TOTALS</b>	<b>0.00</b>	<b>7.00</b>	<b>2.00</b>

## Phillips Co - Phillipsburg

Specialty	Schedule	Contact for Appointment	Location of Clinic
Cardiology – Dr. Curtis	Monthly	785-625-4699 or 888-625-4699	Phillips County Hospital 1150 State St
Cardiology-Dr. Evans	Twice a year April-October	316-858-9000	Phillips County Hospital 1150 State St.
Cardiology- Dr. Efstratiou	Monthly	800-695-4327	Phillips County Hospital 1150 State St.
Dr. Kutty	Monthly		
Cardiology-Dr. Pagano	Monthly	308-865-2263	Phillips County Hospital 1150 state St.
General Surgery – Dr. Schultz	Monthly	785-623-5945	Phillips County Hospital 1150 State St
Dr. Cunningham	Monthly		
Mobile Mammography	Every 3 weeks	785-543-5226	Phillips County Hospital Radiology Dept. 1150 State St.
Mobile Ultrasound, Echo, Vascular	Twice a week	785-543-5226	Phillips County Hospital Radiology Dept 1150 State St
Mobile Nuclear Studies	Twice a month	785-543-5226	Phillips County Hospital Radiology Dept. 1150 State Street

## **Phillips Co - Phillipsburg**

<b>Specialty</b>	<b>Schedule</b>	<b>Contact for Appointment</b>	<b>Location of Clinic</b>
Neurology- Dr. Badejo	Monthly	308-234-9822	Phillips County Hospital 1150 State St.
Oncology-Dr. Bascom	Twice a month	308-865-2263	Phillips County Hospital 1150 State St.
Ophthalmology – Dr. Pokorny	Surgery & Clinic once a month	785-628-8218	Professional Family Eyecare 655 Fifth St.
Orthopedics-Dr. Cheema	Monthly	866-428-8221	Phillips County Hospital 1150 State St.
Orthopedics-Dr. Adamson	Twice a month	800-458-4504	Phillips County Hospital 1150 State St.
Podiatry-Dr. Burns	Monthly	800-448-4998	Phillips County Hospital 1150 State St.
Urology – Dr. Curry	Monthly	877-312-1619 or 785-628-6014	Phillips County Hospital 1150 State St

\*Schedules are tentative subject to holidays and vacations.

# Phillips County Area Health Services Directory

## Emergency Numbers

### Police/Sheriff 911

**Fire 911**

**Ambulance 911**

### Non-Emergency Numbers

Phillips County Sheriff 785-543-6885

Phillips County Ambulance 785-543-6805

### Municipal Non-Emergency Numbers

	<u>Police/Sheriff</u>	<u>Fire</u>
Agra	785-543-6885	785-638-2300
Glade	785-543-6885	785-543-5317
Kirwin	785-543-6885	785-543-5317
Logan	785-543-6885	785-689-7546
Long Island	785-543-6885	785-543-5317
Phillipsburg	785-543-6885	785-543-5317
Prairie View	785-543-6885	785-543-5317

To provide updated information or to add new health and medical services to this directory, please contact:  
KSRE Rooks & Phillips County Extension  
115 N Walnut P.O. Box 519 (Stockton)  
785-425-6851

### Other Emergency Numbers

#### **Kansas Child/Adult Abuse and Neglect Hotline**

1-800-922-5330  
[www.srskansas.org/hotlines.html](http://www.srskansas.org/hotlines.html)

#### **Domestic Violence Hotline**

1-800-799-7233  
[www.ndvh.org](http://www.ndvh.org)

#### **Emergency Management (Topeka)**

785-274-1409  
[www.accesskansas.org/kdem](http://www.accesskansas.org/kdem)

#### **Federal Bureau of Investigation**

1-866-483-5137  
[www.fbi.gov/congress/congress01/caruso100301.htm](http://www.fbi.gov/congress/congress01/caruso100301.htm)

#### **Kansas Arson/Crime Hotline**

1-800-KS-CRIME  
800-572-1763  
[www.accesskansas.org/kbi](http://www.accesskansas.org/kbi)

#### **Kansas Bureau of Investigation (Topeka)**

785-296-8200  
[www.accesskansas.org/kbi](http://www.accesskansas.org/kbi)

#### **Kansas Crisis Hotline (Domestic Violence/Sexual Assault)**

1-888-END-ABUSE  
[www.kcsdv.org](http://www.kcsdv.org)

#### **Kansas Road Conditions**

1-866-511-KDOT  
511  
[www.ksdot.org](http://www.ksdot.org)

#### **Poison Control Center**

1-800-222-1222  
[www.aapcc.org](http://www.aapcc.org)

#### **Suicide Prevention Hotline**

1-800-SUICIDE  
[www.hopeline.com](http://www.hopeline.com)  
1-800-273-TALK  
[www.suicidepreventionlifeline.com](http://www.suicidepreventionlifeline.com)

#### **Toxic Chemical and Oil Spills**

1-800-424-8802  
[www.epa.gov/region02/contact.htm](http://www.epa.gov/region02/contact.htm)

### Health Services

#### Hospitals

##### **Phillips County Hospital**

1150 State Street (Phillipsburg)  
785-543-5226  
[www.phillipshospital.org](http://www.phillipshospital.org)

Phillips County Hospital Services Include:

Acute Care  
Cardiac Rehabilitation  
Emergency Care  
Full-Service Laboratory  
Lifeline Medical Alert Service  
Nutritional Services  
Outpatient Clinic  
Radiology  
Rehabilitation-P.T., O.T. & Speech  
Surgery  
Cardiac & Pulmonary  
Skilled & Intermediate Swing Bed  
Oncology  
Respiratory Therapy

#### Health Department

##### **Phillips County Health Department**

784 6<sup>th</sup> Street (Phillipsburg)  
785-543-6850

Phillips County Health Department Services Include:

Blood pressure checks  
Blood sugar checks  
Communicable disease surveillance  
County home health visits  
Disaster/emergency planning  
Ear washes  
Farm Worker Program  
Flu shots  
Foot care  
Free to Know Cancer Screening  
Health education classes/presentations  
Healthy Start  
Hearing screens  
Hemoglobin checks  
Hepatitis B shots  
Immunizations  
Maternal-Infant Program  
Pneumovax  
Sexually transmitted disease detection & treatment  
Tuberculosis testing & treatment  
Tympanograms  
Urinalysis  
Vision screens  
Well child physicals  
Women, Infants, & Children Nutrition Program

#### Mental Health

##### **High Plains Mental Health**

783 7<sup>th</sup> Street (Phillipsburg)  
785-543-5284

**Medical Professionals**

*MaryBeth VanRoekel APRN-C*

*Chiropractors*

**Phillipsburg Chiropractic Centers**  
875 3<sup>rd</sup> Street (Phillipsburg)  
785-543-2700

**Thompson Family Chiropractic**  
675 3<sup>rd</sup> Street  
785-543-2202

*Clinics*

**Logan Medical Clinic**  
214 West Main Street (Logan)  
785-689-4220

**Phillips County Medical Clinic**  
1719 Highway 183 (Phillipsburg)  
785-543-5211

*Dentists*

**Miller, William A.**  
252 F Street (Phillipsburg)  
785-543-2123

**Patton & Patton Dentistry**  
730 4<sup>th</sup> Street (Phillipsburg)  
785-543-5123  
*Chris S. Patton D.D.S.*  
*Scotty D. Patton D.D.S.*

*Optometrists*

**Juenemann, Ron O.D.**  
655 5<sup>th</sup> Street (Phillipsburg)  
785-543-2715

*Pharmacies*

**Wenzl Drug**  
300 State Street (Phillipsburg)  
785-543-5131

**Witmer Drug Store**  
779 3<sup>rd</sup> Street (Phillipsburg)  
785-543-2032

*Physicians and Health Care Providers*

**Phillips County Medical Clinic**  
1719 Highway 183 (Phillipsburg)  
785-543-5211  
*Jennifer Hamons P.A.-C.*  
*Benjamin Stephenson M.D.*

**Phillips County Hospital**  
1150 State Street (Phillipsburg)  
785-543-5226  
[www.phillipshospital.org](http://www.phillipshospital.org)  
*Jennifer Hamons P.A.-C.*  
*Benjamin Stephenson M.D.*  
*MaryBeth VanRoekel APRN-C*

Visiting Specialists:  
*Brent Adamson M.D.*  
*Adeleke Badejo M.D.*  
*George K. Bascom M.D.*  
*Jeffery Curtis M.D.*  
*Wallace M. Curry M.D.*  
*Roger Evans M.D.*  
*David Grey C.R.N.A.*  
*Ahmed C.K. Kutty M.D.*  
*Kim Hillard P.A.-C.*  
*Amy Martinez P.A.-C.*  
*Paul Muetting P.A.-C.*  
*Tom V. Pagano M.D.*  
*John C. Pokorny M.D.*  
*Lynette Verzal P.A.-C.*  
*Chris Wilkinson M.D.*  
*Brandon Cuttingham, M.D.*  
*Charles Schultz, M.D.*  
*Gregory Burns, D.P.M.*

*Rehabilitation Services*

**Phillips County Hospital  
(Cardiac & Rehabilitation)**  
1150 State Street (Phillipsburg)  
785-543-5226  
[www.phillipshospital.org](http://www.phillipshospital.org)

**Vocational Rehabilitation Services,  
State of Kansas**  
111 E Highway 36 (Phillipsburg)  
785-543-5258

**Other Health Care Services**

**General Health Services**

**Phillips County Hospital**  
1150 State Street (Phillipsburg)  
785-543-5226  
[www.phillipshospital.org](http://www.phillipshospital.org)

**Assisted Living/Nursing Homes/TLC**

**Logan Manor Assisted Living**  
302 W Logan Street (Logan)  
785-689-4227

**Prairie Wind Villa Assistant Living**

1302 State Street (Phillipsburg)  
785-543-6180

593 3<sup>rd</sup> street  
785-543-2454

### Diabetes

**Arriva Medical**  
1-800-375-5137

**Diabetes Care Club**  
1-888-395-6009

### Disability Services

**American Disability Group**  
1-877-790-8899

**Kansas Department on Aging**  
1-800-432-3535  
[www.agingkansas.org/index.htm](http://www.agingkansas.org/index.htm)

### Domestic/Family Violence

**Child/Adult Abuse Hotline**  
1-800-922-5330  
[www.srskansas.org/services/child\\_protective\\_services.htm](http://www.srskansas.org/services/child_protective_services.htm)

**Domestic Violence Association of Central KS**  
P.O. Box 1854 (Salina)  
785-827-5862

**General Information – Women’s Shelters**  
[www.WomenShelters.org](http://www.WomenShelters.org)

**Kansas Crisis Hotline**  
Manhattan  
785-539-7935

### Educational Training Opportunities

**Association of Continuing Education**  
620-792-3218

### Food Programs

**Kansas Food 4 Life**  
4 NW25<sup>th</sup> Road (Great Bend)  
620-793-7100

**Kansas Food Bank**  
1919 E Douglas (Wichita)  
316-265-4421  
[www.kansasfoodbank.org](http://www.kansasfoodbank.org)

**Food Bank (Phillipsburg)**  
United Methodist church

### Government Healthcare

**Kansas Department on Aging (KDOA)**  
503 South Kansas Avenue (Topeka)  
785-296-4986 or 1-800-432-3535  
[www.agingkansas.org/](http://www.agingkansas.org/)

**Kansas Department of Health and Environment (KDHE)**  
Curtis State Office Building  
1000 South West Jackson (Topeka)  
785-296-1500  
[www.kdheks.gov/contact.html](http://www.kdheks.gov/contact.html)

**MEDICAID**  
Kansas Department of Social & Rehabilitation Services (SRS)  
3000 Broadway (Hays)  
785-628-1066

**Phillipsburg SRS Reg. Service Center**  
111 E Hyway 36  
785-543-5258

**MEDICARE**  
Social Security Administration  
1212 East 27<sup>th</sup> Street (Hays)  
785-625-3496

**Social & Rehabilitation Services (SRS)**  
3000 Broadway (Hays)  
785-628-1066

**Social Security Administration**  
1212 East 27<sup>th</sup> Street (Hays)  
785-625-3496

### Health and Fitness Centers

**Wellness Center Corporated**  
520 S 7<sup>th</sup> Street (Phillipsburg)  
785-543-2208

### Home Health

**Home Health Agency, Phillips County**  
784 6<sup>th</sup> Street (Phillipsburg)  
785-540-4350

**Logan Manor Community Health Services**  
108 S Adams Street (Logan)  
785-689-4201

### Hospice

**Hospice Services, Inc.**

424 8<sup>th</sup> Street (Phillipsburg)  
785-543-2900  
[www.hospicenwk.net](http://www.hospicenwk.net)

#### Massage Therapy

**Hair's To You LLC**  
1001 State Street (Phillipsburg)  
785-543-5555

**Phillipsburg Chiropractic Center**  
875 3<sup>rd</sup> Street (Phillipsburg)  
785-543-2700

**Rollin J's**  
Hwy 36  
785-302-1688

**An Angel's Paradise**  
859 3 Street  
785-543-2440

#### Medical Equipment and Supplies

**American Medical Sales and Repair**  
1-866-637-6803

#### School Nurses

**USD 325 Phillipsburg (Board)**  
240 S 7<sup>th</sup> Street (Phillipsburg)  
785-543-5281  
*Phillipsburg Elementary School*  
785-543-2174  
*Phillipsburg Middle School*  
785-543-5114  
*Phillipsburg High School*  
785-543-5251

**USD 326 Logan Schools**  
305 N Sherman P.O. Box 98 (Logan)  
*Logan Jr./Sr. High School*  
785-689-7574  
*Logan Grade School*  
785-689-4631

#### Senior Services

**Golden Years Center**  
638 3<sup>rd</sup> Street (Phillipsburg)  
785-543-6297

**Senior Citizens Community Center**  
304 Main Street (Prairie View)  
785-973-2216

**Westview Homes & Senior Center**  
302 F Street  
785-543-5921

#### Veterinary Services

**Crossroads Veterinary Clinic**  
1708 Highway 183 (Phillipsburg)  
785-543-5041

#### Local Government, Community, and Social Services

#### Adult Protection

**Adult Protective Services (SRS)**  
1-800-922-5330  
[www.srskansas.org/ISD/ees/adult.htm](http://www.srskansas.org/ISD/ees/adult.htm)

**Elder Abuse Hotline**  
1-800-842-0078  
[www.elderabusecenter.org](http://www.elderabusecenter.org)

**Kansas Department of Social and Rehabilitation Services West Region Protection Reporting Center**  
1-800-922-5330

#### Alcohol and Drug Treatment

**Alcohol and Drug Abuse Services**  
1-800-586-3690  
[http://www.srskansas.org/services/alc-drug\\_assess.htm](http://www.srskansas.org/services/alc-drug_assess.htm)

**Alcohol Detoxification 24-Hour Helpline**  
1-877-403-3387  
[www.ACenterForRecovery.com](http://www.ACenterForRecovery.com)

**Center for Recovery**  
1-877-403-6236

**G&G Addiction Treatment Center**  
1-866-439-1807

**Road Less Traveled**  
1-866-486-1812

**Seabrook House**  
1-800-579-0377

**The Treatment Center**  
1-888-433-9869

#### Child Protection

**Kansas Department of Social and Rehabilitation Services West Region**

**Protection Reporting Center – i.e. PROTECTION REPORT CENTER FOR ABUSE**  
1-800-922-5330



Available 24 hours/7 days per week – including holidays

### **Children and Youth**

**Children’s Alliance**  
627 SW Topeka Boulevard (Topeka)  
785-235-5437  
[www.childally.org](http://www.childally.org)

**Kansas Children’s Service League**  
1-800-332-6378  
[www.kcsl.org](http://www.kcsl.org)

### **Community Centers**

**McDill “Huck” Boyd Community Center**  
860 Park Street P.O. Box 503 (Phillipsburg)  
785-543-5535

**Senior Citizens Community Center**  
304 Main Street (Prairie View)  
785-973-2216

### **Crime Prevention**

**Phillips County Sheriff’s Department**  
425 F Street (Phillipsburg)  
785-543-6885

### **Day Care Providers – Adult**

**Logan Manor**  
108 S. Adams (Logan)  
785-689-4202

**Phillips County Retirement Center**  
1300 Street (Phillipsburg)  
785-543-2131

### **Day Care Providers – Children**

**ABC Day Care**  
408 W Main Street (Logan)  
785-689-4321

**Country Cottage Day Care**  
426 Central Street (Glade)  
785-543-5923

**Fantasy Island Day Care**  
343 Center Street (Agra)  
785-638-2258

**Ginger Bread House Preschool**  
301 W F Street (Phillipsburg)  
785-540-4007  
[www.gingerbreadpreschool.net](http://www.gingerbreadpreschool.net)

### **Extension Office**

**KSRE Rooks & Phillips County Extension**  
115 N Walnut P.O. Box 519 (Stockton)  
785-425-6851

**Phillips County Extension Office**  
784 6th  
785-543-6845

### **Funeral Homes**

**Logan Funeral Home**  
102 E Church Street (Logan)  
785-689-4211

**Olliff-Boeve Memorial Chapel**  
1115 2<sup>nd</sup> Street (Phillipsburg)  
785-543-5311

### **Head Start**

**Head Start-Phillips County**  
301 W F Street (Phillipsburg)  
785-543-5850

### **Housing**

**Corp Housing Equity**  
14482 W 118<sup>th</sup> Terrace (Olathe)  
913-261-8067

**Housing Authority, City of Phillipsburg**  
302 W F Street (Phillipsburg)  
785-543-5921

### **Legal Services**

**Hofaker, Paula Law Office PA**  
213 W Main Street (Logan)  
785-689-4606

**Sage & Sage Law Office**  
620 3<sup>rd</sup> Street (Phillipsburg)  
785-543-2022

**Stockman, Brien D. PA**  
208 W Main Street (Logan)  
785-689-4357

**Sullivan, Thomas H. PA**  
773 3<sup>rd</sup> Street (Phillipsburg)  
785-543-2914

**Townsdin & Associates Chartered**  
136 Kansas Avenue (Phillipsburg)  
785-543-2024

**Hahn & Ames PA**  
353 F Street  
785-543-2166

785-689-4865

**Libraries, Parks and Recreation**

**F. Lee Doctor Public Library**  
330 Main Street (Agra)  
785-638-2444

**Logan Public Library**  
109 W Main Street (Logan)  
785-689-4333

**Long Island Public Library**  
350 Washington Avenue (Long Island)  
785-854-7676

**Phillipsburg City Library**  
888 4<sup>th</sup> Street (Phillipsburg)  
785-543-5325

**Sunshine City Library**  
207 Kansas Avenue (Prairie View)  
785-973-2265

**Phillips Co. Convention & Visitor's Bureau**  
270 State Street (Phillipsburg)  
785-543-2321

**Phillips County Treasurer**  
P.O. Box 372, 301 State Street (Phillipsburg)  
785-543-6895

**Rape**

**Domestic Violence and Rape Hotline**  
1-888-874-1499

**Kansas Crisis Hotline**  
Manhattan  
785-539-7935  
1-800-727-2785

**Red Cross**

**Red Cross**  
[www.midwaykansas.redcross.org](http://www.midwaykansas.redcross.org)

**Pool**

**Phillipsburg City Park & City Swimming**  
Ft. Bissel Avenue & G Street (Phillipsburg)  
785-543-6142

**Logan City Pool**  
409 W North  
785-689-4304

**Social Security**

**Social Security Administration**  
1-800-772-1213  
1-800-325-0778  
[www.ssa.gov](http://www.ssa.gov)

**Pregnancy Services**

**Adoption is a Choice**  
1-877-524-5614

**Adoption Network**  
1-888-281-8054

**Adoption Spacebook**  
1-866-881-4376

**Graceful Adoptions**  
1-888-896-7787

**Kansas Children's Service League**  
1-877-530-5275  
[www.kcsl.org](http://www.kcsl.org)

**Public Transportation Service Phillipsburg**  
945 2<sup>nd</sup> Street (Phillipsburg)  
785-543-6685

**State and National Information, Services, Support**

**Adult Protection**

**Adult Protection Services**  
1-800-922-5330  
[www.srskansas.org/SD/ees/adult.htm](http://www.srskansas.org/SD/ees/adult.htm)

**Public Information**

**Agra City Hall**  
222 Main Street (Agra)  
785-638-2811

**Logan City Clerk**  
105 W Main Street (Logan)

**Domestic Violence and Sexual Assault (DVACK)**  
1-800-874-1499 [www.dvack.org](http://www.dvack.org)

**Elder Abuse Hotline**  
1-800-842-0078  
[www.elderabusecenter.org](http://www.elderabusecenter.org)

**Elder and Nursing Home Abuse Legal**

[www.resource4nursinghomeabuse.com/index.html](http://www.resource4nursinghomeabuse.com/index.html)

**Kansas Coalition Against Sexual and Domestic Violence**

1-888-END-ABUSE (363-2287)  
[www.kcsdv.org/ksresources.html](http://www.kcsdv.org/ksresources.html)

**Kansas Department on Aging Adult Care Complaint Program**

1-800-842-0078

**National Center on Elder Abuse**

(Administration on Aging)  
[www.ncea.gov/NCEARoot/Main\\_Site?Find\\_Help/Help\\_Hotline.aspx](http://www.ncea.gov/NCEARoot/Main_Site?Find_Help/Help_Hotline.aspx)

**National Domestic Violence Hotline**

1-800-799-SAFE (799-7233)  
1-800-787-3224 (TTY)  
[www.ndvh.org](http://www.ndvh.org)

**National Sexual Assault Hotline**

1-800-994-9662  
1-888-220-5416 (TTY)  
[www.4woman.gov/faq/sexualassault.htm](http://www.4woman.gov/faq/sexualassault.htm)

**National Suicide Prevention Lifeline**

1-800-273-8255

**Poison Center**

1-800-222-1222

**Sexual Assault and Domestic Violence Crisis Line**

1-800-701-3630

**Social and Rehabilitation Services (SRS)**

1-888-369-4777 (HAYS)  
[www.srskansas.org](http://www.srskansas.org)

**Suicide Prevention Helpline**

785-841-2345

**Alcohol and Drug Treatment Programs**

**A 1 A Detox Treatment**

1-800-757-0771

**AAAAAH**

1-800-993-3869

**Abandon A Addiction**

1-800-405-4810

**Able Detox-Rehab Treatment**

1-800-577-2481 (NATIONAL)

**Abuse Addiction Agency**

1-800-861-1768  
[www.thewatershed.com](http://www.thewatershed.com)

**AIC (Assessment Information Classes)**

1-888-764-5510

**Al-Anon Family Group**

1-888-4AL-ANON (425-2666)  
[www.al-anon.alateen.org](http://www.al-anon.alateen.org)

**Alcohol and Drug Abuse Hotline**

1-800-ALCOHOL

**Alcohol and Drug Abuse Services**

1-800-586-3690  
[www.srskansas.org/services/alc-drug\\_assess.htm](http://www.srskansas.org/services/alc-drug_assess.htm)

**Alcohol and Drug Addiction Treatment Programs**

1-800-510-9435

**Alcohol and Drug Helpline**

1-800-821-4357

**Alcoholism/Drug Addiction Treatment Center**

1-800-477-3447

**Kansas Alcohol and Drug Abuse Services Hotline**

1-800-586-3690  
[www.srskansas.org/services/alc-drug\\_assess.htm](http://www.srskansas.org/services/alc-drug_assess.htm)

**Mothers Against Drunk Driving**

1-800-GET-MADD (438-6233)  
[www.madd.org](http://www.madd.org)

**National Council on Alcoholism and Drug Dependence, Inc.**

1-800-NCA-CALL (622-2255)  
[www.ncadd.org](http://www.ncadd.org)

**Recovery Connection**

[www.recoveryconnection.org](http://www.recoveryconnection.org)

**Regional Prevention Centers of Kansas**

1-800-757-2180  
[www.smokyhillfoundation.com/rpc-locate.html](http://www.smokyhillfoundation.com/rpc-locate.html)

**Better Business Bureau**

**Better Business Bureau**

328 Laura (Wichita)  
316-263-3146  
[www.wichita.bbb.org](http://www.wichita.bbb.org)

**Children and Youth**

**Adoption**

1-800-862-3678  
[www.adopt.org/](http://www.adopt.org/)

**Boys and Girls Town National Hotline**

1-800-448-3000  
[www.girlsandboystown.org](http://www.girlsandboystown.org)

**Child/Adult Abuse and Neglect Hotline**

1-800-922-5330  
[www.srskansas.org/](http://www.srskansas.org/)

**Child Abuse Hotline**  
1-800-922-5330

**Child Abuse National Hotline**  
1-800-422-4453  
1-800-222-4453 (TDD)  
[www.childhelpusa.org/home](http://www.childhelpusa.org/home)

**Child Abuse National Hotline**  
1-800-4-A-CHILD (422-4453)  
[www.childabuse.com](http://www.childabuse.com)

**Child Find of America**  
1-800-426-5678

**Child Help USA National Child Abuse Hotline**  
1-800-422-4453

**Child Protective Services**  
1-800-922-5330  
[www.srskansas.org/services/child\\_protective\\_services.htm](http://www.srskansas.org/services/child_protective_services.htm)

**HealthWave**  
P.O. Box 3599  
Topeka, KS 66601  
1-800-792-4884  
1-800-792-4292 (TTY)  
[www.kansashealthwave.org](http://www.kansashealthwave.org)

**Heartspring (Institute of Logopedics)**  
8700 E. 29<sup>TH</sup> N  
Wichita, KS 67226  
[www.heartspring.org](http://www.heartspring.org)

**Kansas Big Brothers/Big Sisters**  
1-888-KS4-BIGS  
[www.ksbbbs.org](http://www.ksbbbs.org)

**(Hays) Kansas Children's Service League**  
785-625-2244  
1-877-530-5275  
[www.kcsl.org](http://www.kcsl.org)

**Kansas Department of Health and Environment**  
785-296-1500  
[www.kdheks.gov](http://www.kdheks.gov)  
e-mail: [info@kdheks.gov](mailto:info@kdheks.gov)

**Kansas Society for Crippled Children**  
106 W. Douglas, Suite 900  
Wichita, KS 67202  
1-800-624-4530  
316-262-4676  
[www.ksociety.org](http://www.ksociety.org)

**National Runaway Switchboard**  
1-800-RUNAWAY  
[www.1800runaway.org/](http://www.1800runaway.org/)

**National Society for Missing and Exploited Children**  
1-800-THE-LOST (843-5678)  
[www.missingkids.com](http://www.missingkids.com)

**Parents Anonymous Help Line**  
1-800-345-5044  
[www.parentsanonymous.org/paIndex10.html](http://www.parentsanonymous.org/paIndex10.html)

**Runaway Line**  
1-800-621-4000  
1-800-621-0394 (TDD)  
[www.1800runaway.org/](http://www.1800runaway.org/)

**Talking Books**  
1-800-362-0699  
[www.skyways.lib.ks.us/KSL/talking/ksl\\_bph.html](http://www.skyways.lib.ks.us/KSL/talking/ksl_bph.html)

[tml](#)

### Community Action

**Peace Corps**  
1-800-424-8580  
[www.peacecorps.gov](http://www.peacecorps.gov)

**Public Affairs Hotline (Kansas Corporation Commission)**  
1-800-662-0027  
[www.kcc.state.ks.us](http://www.kcc.state.ks.us)

### Counseling

**Care Counseling**  
Family counseling services for Kansas and Missouri  
1-888-999-2196

**Carl Feril Counseling**  
608 N Exchange (St. John)  
620-549-6411

**Castlewood Treatment Center for Eating Disorders**  
1-888-822-8938  
[www.castlewoodtc.com](http://www.castlewoodtc.com)

**Catholic Charities**  
1-888-468-6909  
[www.catholiccharitiessalina.org](http://www.catholiccharitiessalina.org)

**Center for Counseling**  
5815 W Broadway (Great Bend)  
1-800-875-2544

**Central Kansas Mental Health Center**  
1-800-794-8281  
Will roll over after hours to a crisis number.

**Consumer Credit Counseling Services**  
1-800-279-2227  
[www.kscgccs.org/](http://www.kscgccs.org/)

**Kansas Problem Gambling Hotline**

1-866-662-3800  
[www.ksmhc.org/Services/gambling.htm](http://www.ksmhc.org/Services/gambling.htm)

**National Hopeline Network**  
1-800-SUICIDE (785-2433)  
[www.hopeline.com](http://www.hopeline.com)

**National Problem Gambling Hotline**  
1-800-552-4700  
[www.npgaw.org](http://www.npgaw.org)

**Samaritan Counseling Center**  
1602 N. Main Street  
Hutchinson, KS 67501  
620-662-7835  
<http://cmc.pdswebpro.com/>

**Self-Help Network of Kansas**  
1-800-445-0116  
[www.selfhelpnetwork.wichita.edu](http://www.selfhelpnetwork.wichita.edu)

**Senior Health Insurance Counseling**  
1-800-860-5260  
[www.agingkansas.org](http://www.agingkansas.org)

**Sunflower Family Services, Inc.**  
(adoption, crisis pregnancy, conflict solution center)  
1-877-457-5437  
[www.sunflowerfamily.org](http://www.sunflowerfamily.org)

## Disability Services

**American Association of People with Disabilities (AAPD)**  
[www.aapd.com](http://www.aapd.com)

**American Council for the Blind**  
1-800-424-8666  
[www.acb.org](http://www.acb.org)

**Americans with Disabilities Act Information Hotline**  
1-800-514-0301  
1-800-514-0383 (TTY)  
[www.ada.gov](http://www.ada.gov)

**Disability Advocates of Kansas, Incorporated**  
1-866-529-3824  
[www.disabilitysecrets.com](http://www.disabilitysecrets.com)

**Disability Group, Incorporated**  
1-888-236-3348  
[www.disabilitygroup.com](http://www.disabilitygroup.com)

**Disability Rights Center of Kansas (DRC)**  
Formerly Kansas Advocacy & Protective Services  
1-877-776-1541  
1-877-335-3725 (TTY)  
[www.drckansas.org](http://www.drckansas.org)

**Hearing Healthcare Associates**

1-800-448-0215

**Kansas Commission for the Deaf and Hearing Impaired**  
1-800-432-0698  
[www.srskansas.org/kcdhh](http://www.srskansas.org/kcdhh)

**Kansas Relay Center** (Hearing Impaired service)  
1-800-766-3777  
[www.kansasrelay.com](http://www.kansasrelay.com)

**National Center for Learning Disabilities**  
1-888-575-7373  
[www.nclcd.org](http://www.nclcd.org)

**National Library Services for Blind & Physically Handicapped**  
[www.loc.gov/nls/](http://www.loc.gov/nls/)  
1-800-424-8567

**Parmelee Law Firm**  
8623 E 32<sup>nd</sup> Street N, Suite 100 (Wichita)  
1-877-267-6300

## Environment

**Environmental Protection Agency**  
1-800-223-0425  
913-321-9516 (TTY)  
[www.epa.gov](http://www.epa.gov)

**Kansas Department of Health and Environment**  
Salina 785-827-9639  
Hays 785-625-5663  
Topeka 785-296-1500  
[www.kdheks.gov](http://www.kdheks.gov)

## Food and Drug

**Center for Food Safety and Applied Nutrition**  
1-888-SAFEFOOD (723-3366)  
[www.cfsan.fda.gov/](http://www.cfsan.fda.gov/)  
[www.healthfinder.gov/docs/doc03647.htm](http://www.healthfinder.gov/docs/doc03647.htm)

**US Consumer Product Safety Commission**  
1-800-638-2772  
1-800-638-8270 (TDD)  
[www.cpsc.gov](http://www.cpsc.gov)

**USDA Meat and Poultry Hotline**  
1-888-674-6854  
1-800-256-7072 (TTY)  
[www.fsis.usda.gov/](http://www.fsis.usda.gov/)

**U.S. Food and Drug Administration**  
1-888-INFO-FDA  
1-888-463-6332  
[www.fsis.usda.gov/](http://www.fsis.usda.gov/)

**Poison Hotline**  
1-800-222-1222

## Health Services

**American Cancer Society**  
1-800-227-2345  
[www.cancer.org](http://www.cancer.org)

**American Diabetes Association**  
1-800-DIABETES (342-2383)  
[www.diabetes.org](http://www.diabetes.org)

**AIDS/HIV Center for Disease Control and Prevention**  
1-800-CDC-INFO  
1-888-232-6348 (TTY)  
[www.cdc.gov/hiv/](http://www.cdc.gov/hiv/)

**AIDS/STD National Hot Line**  
1-800-342-AIDS  
1-800-227-8922 (STD line)

**American Health Assistance Foundation**  
1-800-437-2423  
[www.ahaf.org](http://www.ahaf.org)

**American Heart Association**  
1-800-242-8721  
[www.americanheart.org](http://www.americanheart.org)

**American Lung Association**  
1-800-586-4872

**American Stroke Association**  
1-888-4-STROKE  
[www.americanheart.org](http://www.americanheart.org)

**Center for Disease Control and Prevention**  
1-800-CDC-INFO  
1-888-232-6348 (TTY)  
[www.cdc.gov/hiv/](http://www.cdc.gov/hiv/)

**Elder Care Helpline**  
[www.eldercarelink.com](http://www.eldercarelink.com)

**Eye Care Council**  
1-800-960-EYES  
[www.seetolearn.com](http://www.seetolearn.com)

**Kansas Foundation for Medical Care**  
1-800-432-0407  
[www.kfmc.org](http://www.kfmc.org)

**National Health Information Center**  
1-800-336-4797  
[www.health.gov/nhic](http://www.health.gov/nhic)

**National Cancer Information Center**  
1-800-227-2345  
1-866-228-4327 (TTY)  
[www.cancer.org](http://www.cancer.org)

**National Institute on Deafness and Other Communication Disorders Information**  
Clearinghouse  
1-800-241-1044  
1-800-241-1055 (TTY)  
[www.nidcd.nih.gov](http://www.nidcd.nih.gov)

## Hospice

**Hospice-Kansas Association**  
1-800-767-4965

**Kansas Hospice and Palliative Care Organization**  
1-888-202-5433  
[www.lifeproject.org/akh.htm](http://www.lifeproject.org/akh.htm)

**Hospice Services, INC**  
424 8<sup>th</sup>  
785-543-2900

## Housing

**Kansas Housing Resources Corporation**  
785-296-2065  
[www.housingcorp.org](http://www.housingcorp.org)

**US Department of Housing and Urban Development**  
Kansas Regional Office  
913-551-5462

## Legal Services

**Kansas Attorney General**  
1-800-432-2310 (Consumer Protection)  
1-800-828-9745 (Crime Victims' Rights)  
1-800-766-3777 (TTY)  
[www.ksag.org/](http://www.ksag.org/)

**Kansas Bar Association**  
785-234-5696  
[www.ksbar.org](http://www.ksbar.org)

**Kansas Department on Aging**  
1-800-432-3535  
[www.agingkansas.org/index.htm](http://www.agingkansas.org/index.htm)

**Kansas Legal Services**  
1-800-723-6953  
[www.kansaslegalservices.org](http://www.kansaslegalservices.org)

**Northwest Kansas Area Agency on Aging**  
510 W 29<sup>th</sup> Street, Suite B (Hays)  
785-628-8204  
<http://www.nwkaaa.com/>

## Medicaid Services

**First Guard**

1-888-828-5698  
[www.firstguard.com](http://www.firstguard.com)

**Kansas Health Wave**

1-800-792-4884 or 1-800-792-4292 (TTY)  
[www.kansashealthwave.org](http://www.kansashealthwave.org)

**Kansas Medical Assistance Program**

Customer Service  
 1-800-766-9012  
[www.kmpa-state-ks.us/](http://www.kmpa-state-ks.us/)

**Medicare Information**

1-800-MEDICARE  
[www.medicare.gov](http://www.medicare.gov)

**U.S. Department of Health and Human Services**

Centers for Medicare and Medicaid Services  
 1-800-MEDICARE (1-800-633-4227) or  
 1-877-486-2048 (TTY)  
[www.cms.hhs.gov](http://www.cms.hhs.gov)

**Mental Health Services****Alzheimer's Association**

1-800-272-3900 or 1-866-403-3073 (TTY)  
[www.alz.org](http://www.alz.org)

**Developmental Services of Northwest Kansas**

1-800-637-2229

**Kansas Alliance for Mentally Ill (Topeka, KS)**

785-233-0755  
[www.namikansas.org](http://www.namikansas.org)

**Make a Difference**

1-800-332-6262

**Mental Health America**

1-800-969-6MHA (969-6642)

**National Alliance for the Mentally Ill Helpline**

1-800-950-NAMI (950-6264) or 703-516-7227 (TTY)  
[www.nami.org](http://www.nami.org)

**National Institute of Mental Health**

1-866-615-6464 or 1-866-415-8051 (TTY)  
[www.nimh.nih.gov](http://www.nimh.nih.gov)

**National Library Services for Blind and Physically Handicapped**

1-800-424-8567  
[www.loc.gov/nls/music/index.html](http://www.loc.gov/nls/music/index.html)

**National Mental Health Association**

1-800-969-6642  
 1-800-433-5959 (TTY)  
[www.nmha.org](http://www.nmha.org)

**Pawnee Mental Health****State Mental Health Agency**

KS Department of Social and Rehabilitation Services  
 915 SW Harrison Street  
 Topeka, KS 66612  
 785-296-3959  
[www.srskansas.org](http://www.srskansas.org)

**Suicide Prevention Hotline**

1-800-SUICIDE [784-2433]  
[www.hopeline.com](http://www.hopeline.com)

**Nutrition****American Dietetic Association**

1-800-877-1600  
[www.eatright.org](http://www.eatright.org)

**American Dietetic Association Consumer Nutrition Hotline**

1-800-366-1655

**Department of Human Nutrition**

Kansas State University  
 119 Justin Hall  
 Manhattan, KS 66506  
 785-532-5500  
[www.humec.k-state.edu/hn/](http://www.humec.k-state.edu/hn/)

**Eating Disorders Awareness and Prevention**

1-800-931-2237  
[www.nationaleatingdisorders.org](http://www.nationaleatingdisorders.org)

**Food Stamps**

Kansas Department of Social and Rehabilitation Services (SRS)  
 1-888-369-4777 or Local SRS office  
[www.srskansas.org/ISD/ees/food\\_stamps.htm](http://www.srskansas.org/ISD/ees/food_stamps.htm)

**Kansas Department of Health and Environment**

1000 SW Jackson, Suite 220  
 Topeka, KS 66612  
 785-296-1320  
[www.kdheks.gov/news-wic/index.html](http://www.kdheks.gov/news-wic/index.html)

**Road and Weather Conditions****Kansas Road Conditions**

1-866-511-KDOT  
 511  
[www.ksdot.org](http://www.ksdot.org)

**Senior Services****Alzheimer's Association**

1-800-487-2585

**American Association of Retired Persons (AARP)**  
 1-888-OUR-AARP (687-2277)  
[www.aarp.org](http://www.aarp.org)

**Americans with Disabilities Act Information Line**  
 1-800-514-0301 or 1-800-514-0383 [TTY]  
[www.usdoj.gov/crt/ada](http://www.usdoj.gov/crt/ada)

**American Association of Retired Persons**  
 1-888-687-2277  
[www.aarp.org](http://www.aarp.org)

**Area Agency on Aging**  
 1-800-432-2703

**Eldercare Locator**  
 1-800-677-1116  
[www.eldercare.gov/eldercare/public/home.asp](http://www.eldercare.gov/eldercare/public/home.asp)

**Home Buddy**  
 1-866-922-8339  
[www.homebuddy.org](http://www.homebuddy.org)

**Home Health Complaints**  
 Kansas Department of Social and Rehabilitation Services (SRS)  
 1-800-842-0078

**Kansas Advocates for Better Care Inc.**  
 Consumer Information  
 1-800-525-1782  
[www.kabc.org](http://www.kabc.org)

**Kansas Department on Aging**  
 1-800-432-3535 or 785-291-3167 (TTY)  
[www.agingkansas.org/index.htm](http://www.agingkansas.org/index.htm)

**Kansas Foundation for Medical Care, Inc.**  
 Medicare Beneficiary Information  
 1-800-432-0407

**Kansas Tobacco Use Quitline**  
 1-866-KAN-STOP (526-7867)  
[www.kdheks.gov/tobacco/cessation.html](http://www.kdheks.gov/tobacco/cessation.html)

**Older Kansans Employment Programs (OKEP)**  
 785-296-7842  
[www.kansascommerce.com](http://www.kansascommerce.com)

**Older Kansans Hotline**  
 1-800-742-9531

**Older Kansans Information Reference Sources on Aging (OKIRSA)**  
 1-800-432-3535

**Senior Health Insurance Counseling for Kansas**  
 1-800-860-5260

[www.agingkansas.org/SHICK/shick\\_index.html](http://www.agingkansas.org/SHICK/shick_index.html)

**SHICK**  
 1-800-860-5260  
[www.agingkansas.org/SHICK](http://www.agingkansas.org/SHICK)

**Social Security Administration**  
 785-296-3959 or 785-296-1491 (TTY)  
[www.srskansas.org](http://www.srskansas.org)

**SRS Rehabilitation Services Kansas**  
 785-296-3959  
 785-296-1491 (TTY)  
[www.srskansas.org](http://www.srskansas.org)

**Suicide Prevention**

**Suicide Prevention Services**  
 1-800-784-2433  
[www.spsfv.org](http://www.spsfv.org)

**Veterans**

**Federal Information Center**  
 1-800-333-4636  
[www.FirstGov.gov](http://www.FirstGov.gov)

**U.S. Department of Veterans Affairs**  
 1-800-513-7731  
[www.kcva.org](http://www.kcva.org)

**Education (GI Bill)**  
 1-888-442-4551

**Health Resource Center**  
 1-877-222-8387

**Insurance Center**  
 1-800-669-8477

**Veteran Special Issue Help Line**  
 Includes Gulf War/Agent Orange Helpline  
 1-800-749-8387

**U.S. Department of Veterans Affairs**

**Mammography Helpline**  
 1-888-492-7844

**Other Benefits**  
 1-800-827-1000

**Memorial Program Service**  
 [includes status of headstones and markers]  
 1-800-697-6947

**Telecommunications Device for the Deaf/Hearing Impaired**  
 1-800-829-4833 (TTY)  
[www.vba.va.gov](http://www.vba.va.gov)



**Veterans Administration**

**Veterans Administration Benefits**  
1-800-669-8477

- Life Insurance**  
1-800-669-8477
- Education (GI Bill)**  
1-888-442-4551
- Health Care Benefits**  
1-877-222-8387
- Income Verification and Means Testing**  
1-800-929-8387
- Mammography Helpline**  
1-888-492-7844
- Gulf War/Agent Orange Helpline**  
1-800-749-8387
- Status of Headstones and Markers**  
1-800-697-6947

**Telecommunications Device for the Deaf**

1-800-829-4833  
[www.vba.va.gov](http://www.vba.va.gov)

**Benefits Information and Assistance**  
1-800-827-1000

**Debt Management**  
1-800-827-0648

**Life Insurance Information and Service**  
1-800-669-8477

**Welfare Fraud Hotline**

**Welfare Fraud Hotline**  
1-800-4



**1000 SW Jackson, Suite 340  
Topeka, KS 66612-1365  
785-296-1200  
<http://www.kdheks.gov/olrh>**

Kansas Department of Health and Environment

**BUREAU OF COMMUNITY HEALTH SYSTEMS**

Jane Shirley, Director Local Health Program 1000 SW Jackson, Suite 340, Topeka, KS 66801 Office phone – 785-296-6549 Cell phone – 785-215-5522 E-mail address – <a href="mailto:jshirley@kdheks.gov">jshirley@kdheks.gov</a>	Linda Frazee, PH Workforce Development Specialist 1000 SW Jackson, Suite 340, Topeka, KS 66801 Office phone – 785-296-3641 Cell phone – 785-231-4504 E-mail address – <a href="mailto:lfrazee@kdheks.gov">lfrazee@kdheks.gov</a>
------------------------------------------------------------------------------------------------------------------------------------------------------------------------------------------------------------------------------------------	----------------------------------------------------------------------------------------------------------------------------------------------------------------------------------------------------------------------------------------------

---

**Phillips County Health Department**

784 6th Street

Phillipsburg KS 67661-1939

**Phone:** 785-543-6850

**FAX:** 785-543-6852

**E-mail:** [adminpchd@ruraltel.net](mailto:adminpchd@ruraltel.net)

**Regional District Office:** NW

**Administrator:**

Louetta Forell, RN

**Health Officer**

Louetta Forell, RN

**Medical Consultant:**

Ben Stephenson, MD

**Trauma Region** NW

# **V. Detail Exhibits**

---

**[VVV Research & Development INC]**

---

# Patient Origin & Access

**[VVV Research & Development INC]**



Phillips County Hospital - Phillipsburg, KS

PO101E-2008  
Annual

Discharges by Major Service, Age, and Patient County of Residence

County	Total Discharges		Pediatric		Adult Medical/Surgical						Psychiatric		Obstetric		Newborn		Surg		
	Cases	Pct	Cases	Pct	Age 0 - 17	Age 18 - 44	Age 45 - 64	Age 65 - 74	Age 75 +	Cases	Pct	Cases	Pct	Cases	Pct	Cases	Pct		
Phillips, KS	397	90.4	27	6.8	46	11.6	57	14.4	48	12.1	185	46.6	6	1.5	15	3.8	13	3.3	6.3
Smith, KS	24	5.5	4	16.7	1	4.2	8	33.3	1	4.2	5	20.8	1	4.2	2	8.3	2	8.3	8.3
Rooks, KS	11	2.5	0		1	9.1	4	36.4	0		6	54.5	0		0		0		
Other Counties	7	1.6	1	14.3	2	28.6	1	14.3	3	42.9	0		0		0		0		
Hospital Total	439	100.0	32	7.3	50	11.4	70	15.9	52	11.8	196	44.6	7	1.6	17	3.9	15	3.4	6.2



Phillips County Hospital - Phillipsburg, KS

PO101E-2009  
Annual

Discharges by Major Service, Age, and Patient County of Residence

County	Total Discharges		Pediatric		Adult Medical/Surgical						Psychiatric		Obstetric		Newborn		Surg		
	Cases	Pct	Cases	Pct	Age 0 - 17	Age 18 - 44	Age 45 - 64	Age 65 - 74	Age 75 +	Cases	Pct	Cases	Pct	Cases	Pct	Cases	Pct		
Phillips, KS	296	89.7	25	8.4	18	6.1	48	16.2	42	14.2	140	47.3	6	2.0	9	3.0	8	2.7	7.4
Smith, KS	17	5.2	1	5.9	2	11.8	2	11.8	0		4	23.5	0		4	23.5	4	23.5	11.8
Rooks, KS	6	1.8	0		1	16.7	3	50.0	0		2	33.3	0		0		0		
Other Counties	11	3.3	1	9.1	1	9.1	2	18.2	1	9.1	6	54.5	0		0		0		
Hospital Total	330	100.0	27	8.2	22	6.7	55	16.7	43	13.0	152	46.1	6	1.8	13	3.9	12	3.6	7.3



Phillips County Hospital - Phillipsburg, KS

PO101E-2010  
Annual

Discharges by Major Service, Age, and Patient County of Residence

County	Total Discharges		Pediatric		Adult Medical/Surgical						Psychiatric		Obstetric		Newborn		Surg		
	Cases	Pct	Cases	Pct	Age 0 - 17	Age 18 - 44	Age 45 - 64	Age 65 - 74	Age 75 +	Cases	Pct	Cases	Pct	Cases	Pct	Cases	Pct		
Phillips, KS	266	89.9	8	3.0	11	4.1	47	17.7	32	12.0	162	60.9	4	1.5	1	0.4	1	0.4	6.4
Smith, KS	10	3.4	3	30.0	0		0		1	10.0	5	50.0	1	10.0	0		0		40.0
Reno, KS	6	2.0	0		0		0		0		6	100.0	0		0		0		
Rooks, KS	5	1.7	0		2	40.0	3	60.0	0		0		0		0		0		40.0
Other Counties	9	3.0	0		3	33.3	3	33.3	0		3	33.3	0		0		0		11.1
Hospital Total	296	100.0	11	3.7	16	5.4	53	17.9	33	11.1	176	59.5	5	1.7	1	0.3	1	0.3	8.1



Phillips County - KS Residents

PO103E - 2008 Annual

Discharges by Hospital, Age, and Major Service

Table with 18 columns: Hospital, Total Discharges (Cases, Pct), Pediatric (Age 0-17, Age 18-44, Age 45-64, Age 65-74, Age 75+), Psychiatric, Obstetric, Newborn, and Pct Surg. Rows include Phillips Cnty Hsp-Phlipsbrg KS, \* KS Residents/NE Hospitals, Hays Medical Center - KS, Norton County Hospital - KS, Smith Cnty M Hsp-Smith Cntr KS, Wesley Medical Cntr-Wichita KS, Salina Regional Hlth Center-KS, Promise Regnl MC-Hutchinson KS, Children's Mercy Hosp-KC MO, Univ of Kansas Hospital-KC KS, Via Christi Rgnl MC-Wichita KS, Other Hospitals, and Total.



Phillips County - KS Residents

PO103E - 2009 Annual

Discharges by Hospital, Age, and Major Service

Table with 18 columns: Hospital, Total Discharges (Cases, Pct), Pediatric (Age 0-17, Age 18-44, Age 45-64, Age 65-74, Age 75+), Psychiatric, Obstetric, Newborn, and Pct Surg. Rows include Phillips Cnty Hsp-Phlipsbrg KS, \* KS Residents/NE Hospitals, Hays Medical Center - KS, Norton County Hospital - KS, Smith Cnty M Hsp-Smith Cntr KS, Univ of Kansas Hospital-KC KS, Via Christi Rgnl MC-Wichita KS, Salina Regional Hlth Center-KS, Wesley Medical Cntr-Wichita KS, Graham Cnty Hosp-Hill City KS, Other Hospitals, and Total.



Phillips County - KS Residents

PO103E - 2010 Annual

Discharges by Hospital, Age, and Major Service

Table with 18 columns: Hospital, Total Discharges (Cases, Pct), Pediatric (Age 0-17, Age 18-44, Age 45-64, Age 65-74, Age 75+), Psychiatric, Obstetric, Newborn, and Pct Surg. Rows include Phillips Cnty Hsp-Phlipsbrg KS, \* KS Residents/NE Hospitals, Hays Medical Center - KS, Norton County Hospital - KS, Smith Cnty M Hsp-Smith Cntr KS, Univ of Kansas Hospital-KC KS, Salina Regional Hlth Center-KS, Graham Cnty Hosp-Hill City KS, Wesley Medical Cntr-Wichita KS, Via Christi Rgnl MC-Wichita KS, Other Hospitals, and Total.



# Phillips County Hospital - Phillipsburg, KS

PO202E-2010  
Annual

## Market Penetration by Major Service, Age, and Patient ZIP Code of Residence

ZIP	City	Total Discharges		Pediatric		Adult Medical/Surgical								Psychiatric		Obstetric		Newborn		Surg
		Cases	Pct	Age 0 - 17 Cases	Pct	Age 18 - 44 Cases	Pct	Age 45 - 64 Cases	Pct	Age 65 - 74 Cases	Pct	Age 75 + Cases	Pct	Cases	Pct	Cases	Pct	Cases	Pct	Pct
67661	Phillipsburg, KS	526	37.6	21	38.1	32	15.6	99	33.3	89	30.3	200	59.5	9	44.4	41	2.4	35	2.9	10.2
67646	Logan, KS	130	30.8	1	0.0	8	12.5	28	25.0	19	21.1	56	50.0	4	0.0	7	0.0	7	0.0	11.1
67621	Agra, KS	46	17.4	2	0.0	4	50.0	14	14.3	7	0.0	9	44.4	0	0.0	5	0.0	5	0.0	0.0
67664	Prairie View, KS	44	15.9	2	0.0	0	0.0	11	9.1	16	6.3	15	33.3	0	0.0	0	0.0	0	0.0	0.0
66951	Kensington, KS	72	8.3	5	20.0	5	0.0	14	0.0	13	7.7	29	10.3	2	50.0	2	0.0	2	0.0	7.1
67502	Hutchinson, KS	2,660	0.2	87	0.0	137	0.0	522	0.0	408	0.0	927	0.6	128	0.0	237	0.0	214	0.0	0.0
67639	Glade, KS	29	17.2	1	0.0	4	25.0	8	12.5	4	0.0	9	33.3	1	0.0	1	0.0	1	0.0	0.0
67644	Kirwin, KS	35	14.3	3	0.0	4	50.0	10	30.0	9	0.0	5	0.0	0	0.0	2	0.0	2	0.0	0.0
67669	Stockton, KS	227	2.2	8	0.0	29	6.9	59	5.1	26	0.0	59	0.0	7	0.0	21	0.0	18	0.0	2.4



Phillips County Hospital - Phillipsburg, KS

OP TOT223E - 2010  
Annual  
Hospital - 171353

Total Outpatient Visits and Market Share by Revenue Category and Patient County Code

Revenue Category	Total	20147		20183		20137		20163		20039		31083		20051		All
	Visits	Visits	%	Visits	%	Visits	%	Visits	%	Visits	%	Visits	%	Visits	%	Other
1 Emergency Dept (45x)	1,312	1,109	75.4	69	6.9	18	1.1	27	1.5	1	0.1			5	0.1	83
2 Surgery (36x, 49x)	240	189	40.3	25	5.6	11	2.3	6	1.2	4	2.2	1	33.3			4
3 Observation (762)	84	78	49.4	2	1.7	1	0.5									3
11 Radiology-Diag (32x ex 322&323)	1,735	1,448	71.0	107	6.9	53	3.1	47	1.9	12	1.7	5	55.6	9	0.1	54
14 Nuclear Medicine (34x)	16	15	14.2	1	1.2											
15 CT Scan (35x)	410	373	64.3	17	4.6	4	0.9	8	1.1							8
16 Mammography (401, 403)	292	267	49.4	13	2.4	3	0.5	8	1.1							1
17 Ultrasound (402)	177	159	41.4	8	2.9	5	1.4	4	0.6							1
19 Magnetic Resonance Tech (61x)	133	121	58.7	4	2.6	3	1.4	4	1.1							1
21 Chemotherapy (33x excl. 333)	58	58	87.9													
25 Stress Test (482)	5	5	12.5													
33 Cardiac Rehab (943)	69	69	95.8													
35 Treatment Room (76x excl. 762)	808	755	76.6	22	2.7	12	1.3	7	0.4	9	0.8			2	0.2	1
37 EKG/ECG (73x)	641	557	77.0	39	8.3	15	2.3	16	2.3			1	50.0			13
38 Cardiology (48x excl. 481-483)	115	102	82.9	9	7.6	1	7.1	3	10.3							
42 Physical Therapy (42x)	710	644	83.3	39	5.7	11	1.8	8	1.4							8
43 Occupational Therapy (43x)	332	301	93.5	17	77.3	6	66.7	4	7.1							4
44 Speech-Language Pathology (44x)	39	26	63.4	12	37.5							1	100.0			
Actual visits in report	5,672	4,948	68.5	312	5.3	121	1.7	116	1.3	20	0.5	8	36.4	15	0.1	132
Actual unclassified visits	6,046	5,345	79.1	321	5.6	155	2.4	109	1.8	13	0.4	15	65.2	7	0.2	81
Actual total visits	11,718	10,293	73.6	633	5.5	276	2.0	225	1.5	33	0.4	23	51.1	22	0.1	213
ED visits admitted; not included	138	123	77.4	8	11.6			4	5.7					1	0.2	2

20147 is Phillips, KS  
20039 is Decatur, KS

20183 is Smith, KS  
31083 is Harlan, NE

20137 is Norton, KS  
20051 is Ellis, KS

20163 is Rooks, KS  
Other is All other counties



---

# Town Hall Attendees Notes & Feedback

**[VVV Research & Development INC]**

**Phillips County KS Town Hall Roster N =70**

Date: 03.05.12				
		Community		
Last Name	First Name	Title	Organization	Address/City/ST/Zip
Verhage	Carolyn	Kitchen Staff	Phillips County Hospital	1011 180 Rd., Kensington, KS
Engle	Morris		PCRC	1081 Evergreen Dr., Phillipsburg, KS
Plummer	Rhonda		Our Mystique by Rhonda	109 N Jefferson, Logan, KS 67646
Plummer	Lou			109 N. Washington, Logan, KS
Hartman	Robert		Hanson Foundation	113 W. Main/P.O. Box 428, Logan, KS 67646
Fredrickson	Twila	Social Service Director	Phillips County Hospital	1150 State Street, Phillipsburg, KS 67661
Vanderplas	Kelly	Life Line Phone Alert	Phillips County Hospital	1150 State Street, Phillipsburg, KS 67661
Giedd	Janice		Hospital Auxiliary	1307 Cable Rd., Phillipsburg, KS
Dietz	Karen		Hospital Auxiliary	1357 Park St., Phillipsburg, KS
Linberger	Esther			137 8th St., Phillipsburg, KS 67661
Kirchoff	Jane		Great Plains	1426 W. 700 Rd., KS, 67661
Johnson	Nancy		Hospital Auxiliary	151 1st St., Phillipsburg, KS
Beyerlein	Vira			1556 W. R., Phillipsburg, KS
Elliott	Julie		PCMC	1676 E400 Rd., Phillipsburg, KS
Kellerman	Rhonda		Phillips County Medical Clinic	1719 HWY 183, Phillipsburg, KS 67661
Zillinger	Lella			1764 W. 200 Rd., Phillipsburg, KS
Rachon	Kathryn			20 Sunset Dr., Phillipsburg, KS
VanLoenen	Shirley		PT	202 Halland, Prairie View, KS
Beckman	Wilma		Hospital Auxiliary	204 S. 6th, Phillipsburg, KS
Cole	Criquet		Criquet's Professional Services	205 F Street Suite #160, Phillipsburg, KS 67661
Cole	Jim		Criquet's Professional Services	205 F Street Suite #160, Phillipsburg, KS 67661
Jones	Judy			205 West E. St., Phillipsburg, KS
Hadley	Mildred	X-ray Tech	Phillips County Hospital	21 E. Osage, Phillipsburg, KS
Cubertson	Lloyd		First National Bank & Trust	225 State St., Phillipsburg, KS 67661
Werner	Glenna			228 4th St., Phillipsburg, KS
Shelton	Brandy		Heath Department	2295 E. 200 Rd., Phillipsburg, KS
Bills	Sheila		Phillips County Hospital	240 Fischer Dr., Phillipsburg, KS
Maimerg	Daniel (Bud)	Chairman	Phillips County Hospital	242 9th Street, Phillipsburg, KS 67661
Baker	Sharon		Phillips County Hospital	256 W. Washington, Phillipsburg, KS
Morgan	Richard		Dish Network	260 2nd St., Phillipsburg, KS
Lower	Ron	The Phillips County Advocate		265 F Street, Phillipsburg, KS 67661
Philbrink	Irene			302 W. F St., Phillipsburg, KS
Robinson	Fred	Mayor	Phillipsburg	302 W. H, Phillipsburg, KS 67661
Miller	Jim			305 S. 5th, Phillipsburg, KS
Miller	Joann			305 S. 5th, Phillipsburg, KS
Stapel	Helda			312 Bergland Dr., Phillipsburg, KS
Stapel	Billy			312 Bergland Dr., Phillipsburg, KS
Jarves	Dianne		DON - Phillips County Hospital	326 E. Quail Rd., Phillipsburg, KS
Felts	Tad		Radio	333 1st St., Phillipsburg, KS
Hatcher	Arlis			337 Bergland Dr., Phillipsburg, KS
VanEaton	Leelli		Heath Department	341 W. 1st., Agra, KS 67621
Beim	John	Chairman	Phillips Co. Concerned Citizens for Healthcare	407 4th St., Phillipsburg, KS
Henrickson	Art	Secretary		408 N. Adams, Box 416, Logan, KS 67646
Kipp	Sue		Rehab Hospital	415 Bertland Dr., Phillipsburg, KS
Harlan	Pastors			431 S. 5th, Phillipsburg, KS 67661
Bohl	Danielle		Phillips County Hospital	439 W. Osage Rd., Phillipsburg, KS
Gentz	Gene			443 D. St., Phillipsburg, KS
Tiens	Barb		Hospital Auxiliary	475 Parklane Rd., Phillipsburg, KS
McClelland Bruning	Carla		Golden Plains Credit Union	475 State St, Phillipsburg, KS 67661
Paulus	Pastor Lorna		Zion Lutheran Church	492 7th Street, Phillipsburg, KS 67661
Bentz	Melba		Hospital Auxiliary	543 8th St., Phillipsburg, KS
Mendoza	Shirley		Parish Nurse	625 8th Street, Phillipsburg, KS 67661
Gervais	Pastor Mark		Calvary Baptist Church	637 9th Street, Phillipsburg, KS 67661
Gervais	Deb		Calvary Baptist Church	637 9th Street, Phillipsburg, KS 67661
Ross	Kirby		Phillips County Review	683 3rd Street, Phillipsburg, KS 67661
Reimer	Sandy	Rehab	Phillips County Hospital	685 Hwy 183, Phillipsburg, KS
Abell	Monte		Farmer's National Bank	759 State St., Phillipsburg, KS 67661
Forell	Louetta		Phillips County Health Dept & Home Health	784 6th Street, Phillipsburg, KS 67661
Freeman	Beth	Billing Clerk	Phillips County Health Department	784 6th Street, Phillipsburg, KS 67661
Morgan	Joyce	School Nurse		784 6th Street, Phillipsburg, KS 67661
Tien	Ed		Tien's Plumbing Heating & AC	843 Kansas St., Phillipsburg, KS 67661
Chaney	Dustin		Phillipsburg Chiropractor	875 3rd St., Phillipsburg, KS
Rose	Ken		County Commissioner	951 E. 1100 Rd. Agra, KS
Leidig	Bonnie	District Magistrate Judge		Court House Square, Phillipsburg, KS 67661
Seems	Steve		S&S Digital Designs	P.O. Box 33, Phillipsburg, KS 67661
Chance	Brenda		City	PO Box 447, Phillipsburg, KS
John	Jackie		Great Plains	PO Box 506, Phillipsburg, KS
Engel	Dave	CEO	Phillips County Hospital	
Fredrickson	Dennis	CFO	Phillips County Hospital	
Kuhlman	Sandy		Hospice Services, Inc.	

Phillips County Community Health Needs Assessment Meeting  
02.13.12 N=72

POPULATION: State does estimates, July 1 certified without a source, when they did the census it corrected itself. Steady IF NOT declining.

Elderly living alone? Correct – haven't thought about.

Private non-farm employment – going down – ACCURATE  
-Households with assistance –  
WIC benefits – it is higher – true

### **Fitness Facilities: 2**

**School Nurse: TOTAL Number – only 1 nurse in Phillipsburg**  
School Wellness Plan- active/ inactive – not for sure

**\*\*Double check population\*\***

Tab 5: Doctors / Other Providers service area – 5 + 2 school nurses in county  
(Phillips and Logan)

Tab 6: OF NOTE: Mental Health persons trending up / dollars going down= more cases with less money

Dentist – 3

Eye – 1 (eyes are screened in school once a year)

Chiropractor - 3

Mental Health – Has office in Phillipsburg (TBD - MENTAL HEALTH COUNT)

About 10% growth on Outpatient

Tab 5: ADD ER to trend

Substance Abuse: Under reported / Treated out of county – Salina, Norton, Dodge City (inpatient)

Lead – is not that big of a concern

Air/ Water contamination:

Traffic Injury – Why? Deer

Uninsured rate? Higher or lower? LOW – what is it approx?

Cardiovascular and Cancer? Correct? Yes

Prevention: Flu shots not tallied in one spot –

- Adults who get flu shots actual percentage? (only know about ones who come into facility)
- Diabetes Rates?
- Dental?

STRENGTHS

## Phillips County Community Health Needs Assessment Meeting

02.13.12 N=72

- Rehab, mental health, wellness center, EMT, Hospital nursing staff, pharmacies, hospice, summer feeding for kids/adults
- Fire dept. golden PCRS Logan manor, home health, early intervention services, health fairs, blood drives, outpatient clinic (visiting doctors – barney hays), hospice
- Meals on wheels
- City park / new pool (next to the wellness center)
- Overall health statistically good
- Workforce manual labor – lower obesity rate
- Strong public leadership at all levels
- Food pantry
- Good wellness center
- Eye doctors
- Clinic open on Saturdays till noon
- Physical therapy
- Doctors/ chiropractor care
- EMS (county level / volunteer)
- 4 well maintained tennis courts
- Financial support from charitable grants
- Airport air-life people
- Volunteers
- Easy access to healthcare – no wait in ER (see a provider in 20 min)
- Outpatient services
- Immunization of kids
- Retirement center

### WEAKNESSES

- Be more helpful to each other – cohesiveness
- More outpatient services (dialysis, chemo) so you don't have to travel out of county
- Pain Management
- OB services – provider that will deliver babies
- Cardiac Care – risk reduction
- Senior services – senior sitting / senior care
- Community awareness of county's abilities
- Doctors – Family Practice (2 GPs, 2 pediatrics for this size county)
- Full time surgeon
- More support from home health to use hospital facility/ services
- Wellness clinic in Logan (Logan is
- Longevity of doctors
- Narcotic Abuse / prescription drug abuse
- Auditory care

Phillips County Community Health Needs Assessment Meeting  
02.13.12 N=72

TOPICS ON BOARDS:

Educational Programs: 19

Cooperation between healthcare facilities: 48

Dialysis Unit: 11

Chemo Therapy: 11

Prescription Aid (Financial): 10

Elderly Care (assistance): 18

Doctors: 59

Dental: 4

Substance Abuse: 12

Offer OB Services: 27

# CHNA Additional Thoughts 2012

## Introduction -Town Hall Feedback Survey

Several KS county Community Health Needs Assessment Town Hall meetings have been held recently by VVV Research & Development to collect public opinions regarding health care delivery. If you did not get a chance to attend your local county meeting or have further opinions to share, NOW is your opportunity to share online.

### 1. Your Kansas county of residence ?

- |                               |                                |                              |
|-------------------------------|--------------------------------|------------------------------|
| <input type="radio"/> Barton  | <input type="radio"/> Kiowa    | <input type="radio"/> Thomas |
| <input type="radio"/> Decatur | <input type="radio"/> Norton   | <input type="radio"/> Trego  |
| <input type="radio"/> Ellis   | <input type="radio"/> Pawnee   |                              |
| <input type="radio"/> Gove    | <input type="radio"/> Phillips |                              |

### 2. Are there any county / community area healthcare services that you feel are being offered / delivered currently in a "High Quality" manner (a county strength) ? (Be specific)

### 3. Are there any healthcare services in your county / community that you feel need to be improved and/or changed? (Be specific)

### 4. Finally, how would you rate the "overall health" of your county? (Note: if you have already answered this question please skip)

	5 - Very Good	4 - Good	3 - Fair	2 - Poor	1 - Very Poor
County Health Rating	<input type="radio"/>	<input type="radio"/>	<input type="radio"/>	<input type="radio"/>	<input type="radio"/>

CHNA Additional TownHall Feedback - Phillips County KS			
Code	Code 2	Code 3	Are there any county / community area healthcare services that you feel are being offered / delivered currently in a "High Quality" manner (a county strength) ? (Be specific)
ACC	SPEC		County healthcare services; clinics in Phillipsburg and Logan; availability of specialists at hospitals and clinics; care at hospital is excellent.
ACC	EMS	DOH	I am very pleased with all the healthcare services provided for here in Phillipsburg. I always receive prompt and courteous service at the Health Clinic and the hospital. We are very fortunate to have a hospital, medical clinic, EMS service, and home health department. Bringing specialists to our hospital is a great asset. Therefore, patients do not have to go out of town for an appointment.
AMB			Phillips County Ambulance Service
COMM	EMS	PHAR	Phillips County Hospital continues to give quality care and provide a team approach to healthcare. The EMS service is also very knowledgeable. The pharmacies, both, do a good job.
DENT	EUE		dental and vision services are good; medical health services are poor at best
DOCS	EMER		Having Specialists from Kearney see patients in our hospital is a strength. Dr. Bascom, Dr. Kutty...etc We have EXCELLENT Emergency Medical Services!
DOCS			I am pleased with all of the healthcare in Phillips county. Even being short of doctors, they have fulfilled our needs.
DOCS			No. We have a hospital that only offers a patch job with a fill in Dr. & ships you out to another hospital for the help you really need.
DOCS			The quality of care patients receive is High Quality along with the professionalism of the Doctors.
DOCS			Working very hard to recruit doctor. IT WILL HAPPEN.
DOH	VACC	EMS	County health, shots, etc; EMS - emergencies.
DOH	EMS	FAC	Health Department Phillips County EMS Phillips County Hospital and Phillips County Medical Clinic
DOH	PHY	CHIR	Health dept & hospital rehab PT. Chiropractor - Stewart Thompson only
DOH			I feel the Health Dept. should be left as it is and no need for anyone to stick their nose in where not needed!
DOH			Our county health is doing a great job.
DOH			Our county health service is very good.
DOH			Phillips county health department - good services
DOH			Phillips County Health Dept.
DOH			Phillips Health Dept
EMS	OP	CHEM	Local EMS, outpatient services, possibility of chemotherapy services at PCH.
FAC	DOH	BH	Phillips County Medical Clinic, Phillips County Hospital, Phillips County Health Department, High Plains Mental Health
HH			The home health care nurses are capable and compassionate. There are numerous opportunities for various physical therapies.
HOPS			Hospice Healthcare
HOSP			We have a good Hospice admin and service.
OTHR			"average" healthcare
RAD			Strong radiology department at Norton County Hospital

CHNA Additional TownHall Feedback - Phillips County KS			
Code	Code 2	Code 3	Are there any county / community area healthcare services that you feel are being offered / delivered currently in a "High Quality" manner (a county strength) ? (Be specific)
SNUR	PHY		School Nursing and Physical/Occupational Therapy at the hospital
STFF			Clinic is good, glad to have Bryan and Jennifer. Not too impressed with Deb Wolfe @hospital.
STFF			Health department is doing an excellent job. They make you feel welcome.
STFF			high quality PA's in the system
STFF			Kind, caring, compassionate health care providers and their nurses striving to make a difference every day.
STFF			Nurses & PA's are the very best
STFF			The Phillips County Hospital offers a high quality of medical care to Phillipsburg residents and those in surrounding communities. The consulting doctors who see patients here make it convenient for patients so that they do not have to travel to see their doctors. The EMS service of Phillips County is also a great asset to the community healthcare team.
TRAN			transportation available by van through the city to healthcare appts
VACC	DOH		I have always brought my children for immunizations to our local health dept and it has always been excellent.
VACC	STFF		My shots - very good at giving them. Very friendly staff, kind people.
WIC	FAM	OP	WIC, family planning clinics, outpatient rehab
			no
			No
			No.
			Phelps County, Holdredge, NE
			Plainville
			The Phillips County Medical Clinic has some outstanding staff members! They are always friendly and helpful, which is comforting when you are sick. Its good to know the staff actually cares!



## CHNA Additional TownHall Feedback - Phillips County KS

Code	Code 2	Code 3	Are there any healthcare services in your county / community that you feel need to be improved and/or changed? (Be specific)
AGE			Care for the elderly, independently and assisted living ways.
COMM			Better communication and working cooperatively with the multiple health care facilities and groups of the county
DIAL	DOCS		Dialysis - we should have a place for this, there seems to be a lot having to do home or go somewhere for it. More providers, as DO or MD's.
DIAL			The addition of a dialysis unit as we currently do not have this service available..
DOCS	COMM		Another doctor, more collaboration; PCH & clinics and the county health department.
DOCS			Better quality doctors - and or keep the ones we have / had.
DOCS			Continuity of healthcare delivery by professionals at hospital.
DOCS			Doctors
DOCS			Doctors will not stay here very long. Some have stated that it is because of being unable to work with company that manages the medical facilities of our county.
DOCS			Frequent change of doctors - it would be nice if they would stay longer :)
DOCS			Get rid of Great Plains Health Alliance so we can get doctors to come to the area.
DOCS			Get rid of High Plains so that we can get and keep good Doctors in our community
DOCS			good Quality Doctors are needed badly
DOCS			I do not doctor locally because their is a revolving door of doctors in our community and I had a bad experience regarding lab results from Hays. I can go 55 miles North and doctor with the same person that delivered my children 20 years ago. Until a stable staff with high recomendations is acquired I will not consider doctoring in town. Several years ago I started using the local clinic again and had two different doctors in a a three year period. A strong healthcare system would be a great asset to our community. I strongly believe in supporting the local community, but when it comes to my family's healthcare I have to drawn the line.
DOCS			I was pleased to see Dr. Tom leave. He was horrible about running down what strives toward greater healthcare our hospital is trying to achieve. He was just embarrassed because of all of the mistakes HE made while on staff.
DOCS			M.D.'s
DOCS	SPEC	ACC	more doctors would be a plus and more specialist visiting the hospital so we don't have to travel out of town would be good if available
DOCS	ACC		More health care physicians here on a permanent basis so you don't see a different one every time you see a doctor. Currently traveling to Holdrege.
DOCS	OTHR		need doctors, need different company managing the hospital
DOCS			Need Doctors-PA's are good, but it's hard to have faith in a traveling Doctor you don't know-how many other commu nities have these problems-do not invite Drs. back who were a detriment to our community!!
DOCS			need more doctors and better management of our system
DOCS			physicians

## CHNA Additional TownHall Feedback - Phillips County KS

Code	Code 2	Code 3	Are there any healthcare services in your county / community that you feel need to be improved and/or changed? (Be specific)
DOCS			There needs to be more prescribing providers. One physician and a few PA's cannot meet the needs of the Phillipsburg community, let alone the entire county. We need at least 2 more doctors and a nurse practitioner.
DOCS			We cannot seem to keep any good Doctors around here! They seem to keep getting chased out of town by the same people everytime and it is the pits to have to travel a minimum of 30 miles to seek care from a doctor.
DOCS	STFF	AGE	We currently do not have a doctor in Phillips county to serve the people. Not only are they understaffed, but technology wise we are not advance nor up to speed with the modern world. People do not even go to nurses in town because they have proven time and time again to fail at providing the necessary health care. Also, the retirement homes for people have a reputation of treating there clients poorly and not thriving at their jobs.
DOCS			We need doctors with an M.D. title & a good reputation of delivering good services to the patient.
DOCS			We need more doctors, which we now have Dr. Ben, but we need our community to get together and use our county medical staff.
DOH			County Health does not accommodate community members or the times they are open.
FAC	OBG		I think we need different hospital management. Phillips County Hospital has not been able to provide continuity of care as their is a constant turnover of Doctors. The current management doesn't want to provide OB services due to liability issues and as a consequence people start doctoring out of town and never return to our local hospital because they have formed a bond or connection with the neighboring town's physicians.
FAC			Need to discontinue hospital & clinic lease with Great Plains Health Alliance
FAC	STFF		Phillipsburg medical clinic and hospital. Better trained staff in offices, training in patient/families/etc, courtesy.
FAC			We need transparency in Phillips County Health Systems. I do not feel the Hospital board, management and staff have been operating with integrity. I feel this image has a huge impact on our community as a whole. We need a hospital. We need good doctors.
OBG			Ob
OTHR			Get rid of Great Plains.
OTHR			Phillips County Hospital needs to be managed by someone other than GPHA. GPHA will never overcome the negative perception/feelings no matter what they do.
PEDS	WELL		A pedatrician, especially for infant and toddler care. Initiatives for promoting healthy lifestyles through diet, exercise, etc.
STFF			A hospital with staff to handle a problem not just refer or transfer a patient.j.
STFF			The hospital needs an attitude adjustment for the better.
			No.
			None
			none

---

# Public Notice & Invitation

**[VVV Research & Development INC]**

## **NEWS**

**Date: January 17<sup>th</sup>, 2012**  
**For Immediate Release**  
**Media Contact: Dave Engel**

**HOLD the DATE Reminder:** In order to gauge the overall health needs of Phillips County, the Phillips County Hospital and Phillips County Health Department cordially invite you to participate in a Community Healthcare Needs Assessment Town Hall discussion group on **Monday, February 13<sup>th</sup>, 2012 from 5:30 pm-7 pm** at the Phillips County Fairgrounds main building.

This event is being held to identify & prioritize health needs of Phillips County residents, in order to maintain regulatory compliance for both organizations.

We encourage your attendance, as your input is very valuable to our community. A free meal will be served. VVV Research & Development, Inc. from Olathe, KS will be facilitating our meeting that day.

We look forward to seeing you there.

# Input needed for Phillips Co. Healthcare Assessment

Phillips County Hospital, Medical Clinics and Phillips County Health Department are continuing to collect data on the Community Healthcare Needs Assessment Survey. We invite you to log onto our website [www.phillipshospital.org](http://www.phillipshospital.org) or book at Phillips County Hospital or Phillips County Health Department. Printed copies of the survey are available at all locations if you do not have access to a computer. This short survey consists of 4 questions, including two primary questions asking how you feel our county/community healthcare services are being offered/delivered currently in a "High Quality" manner (a county strength) and if there are any healthcare services you feel need to be improved and/or changed.

The deadline to submit your survey is April 30. Your feedback would be greatly appreciated.

3- 21-12

---

## *Letter to the Editor*

### **To The Community:**

On February 13, 2012, Phillips County Hospital and Phillips County Health Department held a Community Health Needs Assessment Town Hall Meeting, conducted by Vince Vandelaar of VVV Research Development, to collect public opinions regarding healthcare delivery.

If you were unable to attend the meeting or have further opinions to share, please fill out the survey on our website [www.phillipshospital.org](http://www.phillipshospital.org)

or on Facebook at Phillips County Hospital - or Phillips County Health Department. Printed copies of the survey are available at both locations if you do not have access to a computer.

This short survey consists of 4 questions, including two primary questions asking how you feel our county/community healthcare services are being offered/delivered currently in a "High Quality" manner (a county strength) and if there are any healthcare serv-

ices you feel need to be improved and/or changed.

Your feedback would be greatly appreciated.

**Sincerely,**

**Dave Engel - FACHE**

**CEO**

**Phillips County  
Hospital**

**Louetta Forell, RN**

**Administrator/  
Health Officer**

**Phillips County  
Health Department &**

**HHA**



# Town Hall held to determine health care needs of county

At the request of the Phillips County Hospital and Phillips County Health Department, a health care consultant, Vince Vandehaar, conducted a Town Hall Meeting at the 4-H

Building north of Phillipsburg Monday night to help identify health care needs in the county.

Over five dozen people were in attendance representing a cross-section of Phillips County residents

Vandehaar owns Kansas City-based VVV Research & Development, which helps "organizations strategically plan and facilitate marketing tactics, and conducts both qualitative and quantitative market research, database marketing, provider/payor research and customer satisfaction research," according to KC Health Care Reform website.



Vince Vandehaar

## •Healthcare Town Hall

ranging from consumers, health care employees, business people, public organizations and elected officials.

Vandehaar opened the meeting by stating that he had been asked by the Health Department and Hospital to coordinate a community health assessment and to collect data in order to develop strategies, look at health related trends and issues, and to meet federal requirements. He stated that he was conducting what he called Community Health Needs Assessments in ten northwest Kansas counties, and that the report he will generate as a result of his work here is required if the Health Department wants to be accredited within the next five years.

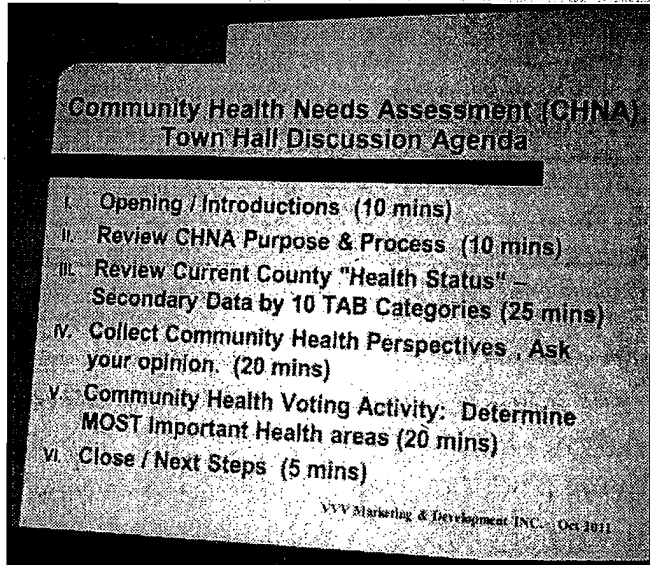
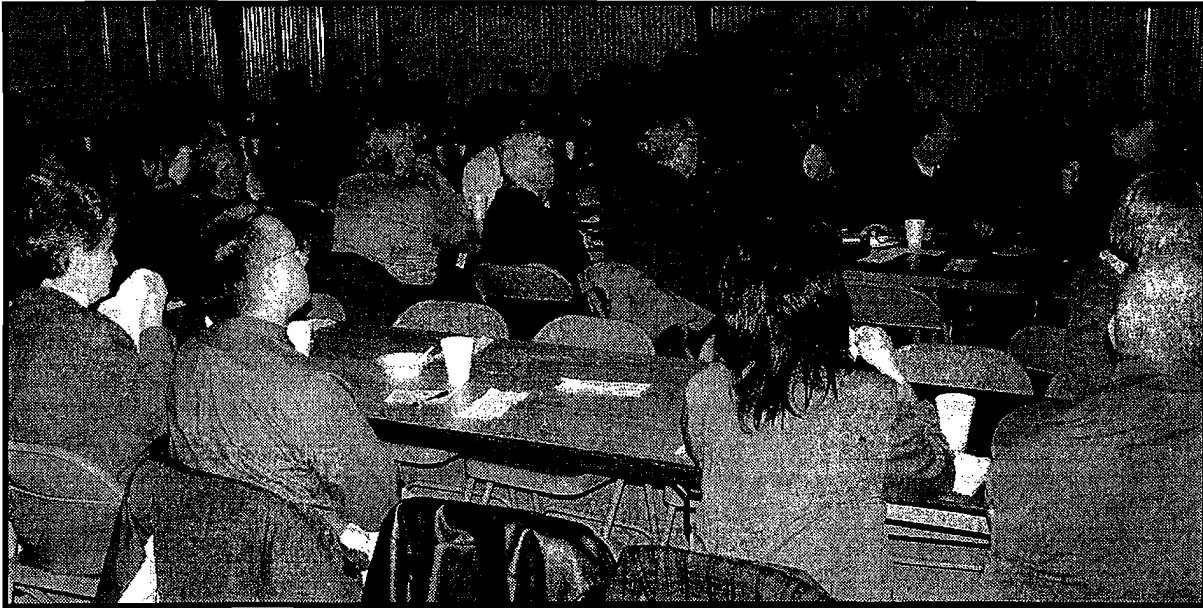
Vandehaar told the group that he wanted "to provoke you to think" and provided a 45 minute long presentation on how Phillips County compares on a variety of health care issues to other northwest Kansas counties as well as the state of Kansas as a whole.

He then had those present assemble into small groups to discuss and note what they think the strengths of the community are in regard to health care, as well as what healthcare services they thought needed to be improved or changed.

Vandehaar then held an open discussion on those issues, with issues ranging from cooperation amongst health providers, recruiting

doctors, providing services such as chemotherapy being brought up.

Vandehaar stated that the information gathered as a result of the meeting would be processed, with a report being issued to the Hospital and Health Department by this summer. He stated that once the report is issued, it will be up to the people involved to decide whether or not to reconvene to review and discuss it.



*A town hall meeting was held at the Phillips County Fair Building to perform a Community Health Needs Assessment and to gauge the overall health needs of Phillips County, the Phillips County Hospital and Phillips County Health Department. At the end of Vince Vanderhall's presentation, a health voting activity was held to determine the most important needs which will be used to develop strategies to use locally.*

(advocate ~ rl)



CHNA report  
questions contact :



***Vince Vandelaar, MBA***  
***VVV Marketing & Development INC.***  
***Adjunct Professor / Professional Consulting  
Services***

***601 N Mahaffie, Olathe, KS 66061***  
***(913) 302-7264 (C)***  
***vmlvandelaar@aol.com***  
***LinkedIn: vandelaar***  
***[http://sites.google.com/site/vvvresearchdevelo  
pment/](http://sites.google.com/site/vvvresearchdevelopment/)***