



BID PACKAGE - CONTENTS

Mary Lin Elementary School
Addition & Renovations – RE-BID V
586 Candler Park Drive NE
Atlanta GA 30307
Page 1 of 1

I. TABLE of CONTENTS

1. Invitation to Bid – All Trades
2. Attachment A – General Items, Bid Instructions – All Trades
3. Attachment B – Scope of Work, Trade Specific
4. Attachment C – Bid Form Proposal – All Trades
5. Attachment D – Request for Information Form
6. Attachment E – Subcontractor Immigration and Control Affidavit & Agreement
7. Attachment F – Phasing Plan

II. PACKAGES for BID

- I. SITE WORK
 - A. Package 1B – Site Concrete
- II. SHELL CONSTRUCTION
 - A. Package 3 – Building Concrete

END OF BID PACKAGE CONTENTS



INVITATION TO BID

Mary Lin Elementary School
Addition & Renovations – RE-BID V
586 Candler Park Drive NE
Atlanta, GA 30307
Page 1 of 3

I. INVITATION TO BID

Hogan Construction is inviting contractors to provide re-bids for the upcoming construction at the Mary Lin Elementary School, located at 586 Candler Park Drive NE, Atlanta, GA 30307.

The Mary Lin Elementary School Addition & Renovations construction project is phased construction of two separate additions to and renovation of the existing elementary school located adjacent to Candler Park. All work will be completed while the existing facility is occupied. The work includes four separate phases. The 1st phase of work includes site and utility work for the underground storm detention system and the two story, 25,000 SF classroom addition. The 2nd phase includes the partial demolition and renovation of approximately 9,500 SF on the 1st floor consisting of the Kitchen, Cafeteria, and Classrooms and construction of the 2 story classroom addition. The 3rd phase includes the partial demolition of the existing building for the construction in the same location of a 12,000 SF addition of a new Main Office, Media Center, and Connector to the work completed in the 2nd Phase and the renovation of approximately 18,000 SF of existing interiors for a new Band, Chorus, and Art Classrooms. The 4th phase is the replacement of Interior Finishes and Low Voltage Work of approximately 26,500 SF of existing classrooms and the addition of new Restrooms.

Construction Documents for this project are available for review through various sources. Below is a list of several sources to procure project documents.

- LDI 770-263-1010 (purchase required)
- DIS/Action Blue 404-962-2481 (purchase required)
- Hogan Construction 770-242-8588 (on-site review or download)
<http://www.hoganconstructiongroup.com/subcontractors/current-bids/>
- McGraw-Hill/Dodge
- Reed Construction Data
- AGC - Associated General Contractors of Georgia, Inc.

Please review the Bid Package Submission Schedule provided in **Section III** of this Invitation to Bid to determine when each Bid Package is due.

II. PREPARATION of BIDS

- A. Proposals shall be prepared on unaltered Bid Forms – see Attachment C.
- B. Bidder shall acknowledge receipt of all addenda.
- C. Bidder shall note acceptance of all Procedural & General Items listed in Attachment A.
- D. Bidder shall acknowledge the Scope of Work listed in Attachment B. **Note:** This Scope of Work shall be used as a guide to the bidder in understanding the Scope of Work for the project, but **shall not** be construed as being all inclusive of the work necessary to complete bidders' scope of work. The information in the Construction Documents (Plans & Specifications) shall rule.
- E. Any questions regarding the bid documents should be sent to Hogan Construction. **DO NOT** contact the Owner or Architect directly. Please use the blank RFI Form (Attachment D) to submit any questions.



INVITATION TO BID

Mary Lin Elementary School
Addition & Renovations – RE-BID V
586 Candler Park Drive NE
Atlanta, GA 30307
Page 2 of 3

III. SUBMISSION of BIDS

- A. BID PACKAGE SUBMISSION SCHEDULE: All proposals must be submitted no later than **Friday, January 24, 2014 at 12:00pm**. **All proposals received after 12:00pm on Friday, January 24, 2014 will be disqualified.**
- B. *Completeness* – A complete proposal shall include, but not limited to:
1. Bid Form – see Attachment C; Form must be completed in its' entirety and signed.
 2. Alternates on the attached form (if applicable)
- C. *Submission of Bids* – All bids must be submitted to Hogan Construction Group in order to be considered for the work. Bids may be mailed, emailed or faxed. Below is the information for each delivery method.
1. **MAIL/DELIVERY:**
Hogan Constructin Group
Attn: Bryan Rogers
5075 Avalon Ridge Parkway
Norcross, GA 30071
 2. **EMAIL:**
BRogers@HoganConstructionGroup.com
 3. **FAX:**
770-242-3100
Attn: Bryan Rogers
- D. *Packaging* – All mailed/delivered subcontractor bids must be in a sealed envelope, labeled as follows:
1. Name of Project (Mary Lin Elementary School)
 2. Name of Contractor
 3. Bid Package
 4. Date of Delivery
- E. *Receipt* – All bids shall be received by the predetermined time on the predetermined date. If you choose to have your bid mailed, bids must be **received** by Hogan Construction prior to the bid closing date and time.

IV. BID PROCESS SCHEDULE

- 1/15/14 - Bid Packages as well as Construction Documents are scheduled to be released.
Note: These documents are at the 100% completion stage.
- Please review the Bid Package Submission Schedule provided in **Section III** of this Invitation to Bid to determine when each Bid Package is due.
- 1/20/14 @ 12PM – Bidder Questions are due.



INVITATION TO BID

Mary Lin Elementary School
Addition & Renovations – RE-BID V
586 Candler Park Drive NE
Atlanta, GA 30307
Page 3 of 3

- 1/21/14 – Final Addendum, if required, to be posted.
- **1/24/14 @ 12PM** – All subcontractor bids are due.
- 1/31/14 - The work is intended to commence
- The schedule for Concrete Work will commence immediately after issuance of the Notice to Proceed and all applicable Permits.
- Overall duration of construction activities is anticipated to be 18 months.

V. SITE VISITS

Contractors must contact Hogan Construction regarding the scheduling of a site visit. This school is currently in session. No un-scheduled site visits will be allowed.

VI. CONTACT

If you have any questions on the attached documents, please contact:

Bryan Rogers
Sr. Project Manager
O: 770 242 8588
BRogers@HoganConstructionGroup.com

We appreciate your interest in this project and look forward to your response.

END OF INVITATION



ATTACHMENT A - GENERAL ITEMS

Mary Lin Elementary School
Addition & Renovations – RE-BID V
586 Candler Park Drive NE
Atlanta, GA 30307
Page 1 of 13

I. PROCEDURAL ITEMS – ALL TRADES

A. *Insurance* – All responding subcontractors must be able to meet or exceed the requirements listed below:

- General Liability: \$1,000,000 (Each Occurance); \$2,000,000 (Aggregate)
\$1,000,000 (Products/Completed Operations Aggregate)
- Excess/Umbrella Liability: \$1,000,000 (Each Occurance & Aggregate)
- Worker’s Compensation: \$100,000 (Each Accident & Disease Each Employee);
\$500,000 (Disease Policy Limit)
- Automobile Liability: \$1,000,000

In addition, all participating subcontractors must itemize the costs of each line of insurance with respect to their scope of work and total bid. Documentation of this program is available upon request.

- B. *E-Verify* – All contractors must be a full participant in the E-Verify Program established by the United States Department of Homeland Security. Subcontractors must review and submit a completed “Subcontractor Immigration and Control Affidavit and Agreement” stating compliance with these requirements. See Attachment E.
- C. *Construction Standards & Practices* – Responding subcontractors will be held to the highest standards throughout the construction process. Refer to the specifications for the required certifications for specific trades.
- D. *Payment & Performance Bonds* – the cost of performance bonds and labor and material payment bonds shall not be included in the base bid, but the costs shall be included as a separate item on the Bid Form. The General Contractor may require these bonds before the award of any work, in a form approved by the General. The inability of the bidder to provide the required bonds may disqualify the bid package submission.
- E. *Subcontractor Agreement* – all bidding subcontractors should review and be familiar with the approved subcontractor agreement. Acceptances of all terms are required to be awarded work.

II. GENERAL ITEMS – ALL TRADES

- A. *Completeness of Bidding* – All Bidders shall include in their bids all costs for equipment, tools, material, labor, permitting, engineering, supervision and all other associated services required to complete their scope of work described in the construction documents, unless specifically noted otherwise.
- B. *Responsibility for Project Documents* – In addition to the review of trade-specific drawings and specifications, **every** subcontractor is responsible for the review of **all** drawings and specifications for scope items that are related to their trade.
- A current listing of all the relevant specifications and drawings can be found in Section IV of this document. Subcontractor must ensure that the plans and specifications are current and match the date listed on this document.
- C. *Trade Permits* – If applicable, all trade permits are to be provided by the subcontractor.

- D. *Schedule* – Subcontractors must maintain manpower, material and equipment as needed to maintain the General Contractors' Master Schedule. The Phasing Plan is included as Attachment F for review.
- E. *Supervision/Project Manager* - Subcontractors shall provide **full** time, experienced on-site Supervision for the entire duration of the project. In addition, an experienced Project Manager must be assigned specifically to this project and shall be available for on-site meetings. The Project Manager must be available to administer the contract agreements, maintain contract documents, monitor project costs, etc. as required.
- F. *Submittals & Shop Drawings* – All subcontractors must prepare all required submittals and shop drawings in a timely manner.
- G. *Coordination* – Subcontractors shall cooperate with other contractors working in the vicinity of each other while performing construction activity for the project. Subcontractors shall endeavor to resolve conflicts in their respective work without disruption to other trades and construction schedule.
- H. *General Safety* - Strict compliance of all regulations by subcontractors on the jobsite is imperative. Subcontractors will be responsible for all of their machinery, tools and equipment and ensure that it meet the current OSHA Guidelines. In addition, all employees of the subcontractor must practice 'Safety First' in their daily activities.
- I. *Project Cleanliness* - Clean up of the construction site will be performed on a continuous, daily basis. Each subcontractor will be required by their subcontract agreement to perform daily clean up of all debris created during the construction process. Dumpsters will be provided for all trades by the General Contractor.

III. GENERAL SCOPE – ALL TRADES

- A. Subcontractors shall field check all necessary dimensions of all work and/or associated material whether furnished and/or installed by others or by Subcontractor to assure final proper fit and function of the work before fabrication commences. All work or rework necessitated by Subcontractors' failure to meet this requirement shall be done at Subcontractors' own expense.
- B. All workmanship, materials, fixtures, specialties and equipment required shall be subject to and in accordance with the requirements of the applicable state, local and national codes and standards under which the installation is made. Work and materials specifically required by the state, local and national codes which are not specifically called out for in the Contract Documents, but necessary to complete the scope of work are the responsibility of the Subcontractor. These items shall be furnished and installed by the Subcontractor at their own expense.
- C. Subcontractor shall do all cutting and patching necessary for the installation of their scope of work. Please refer to Item G listed in Section II of this document.



ATTACHMENT A - GENERAL ITEMS

Mary Lin Elementary School
Addition & Renovations – RE-BID V
586 Candler Park Drive NE
Atlanta, GA 30307
Page 3 of 13

- D. Prior to starting work, subcontractors must inspect those areas prepared for your work and notify Hogan Construction Group of any deficiencies which impact your work. This inspection shall be done no less than five (5) working days from the anticipated start of activity.

IV. USE of CONSTRUCTION DOCUMENTS

A. Interpretation of Documents:

- i. Any doubts regarding the meaning of any portion of the documents or questions about discrepancies in or omissions from any part of the documents should be brought to the attention of Hogan Construction Group immediately. **DO NOT** contact the Owner or Architect directly.
- ii. Interpretation or correction of the documents will be made only by addendum and will be made available via official posting and notification. Receipt of any and all addenda shall be acknowledged on the Bid Form. Only interpretations of changes in the form of a written addendum will be binding.

B. Substitute Material and Equipment:

- i. The work shall be bid on the basis of proposed material and equipment or the method of installation described in the drawings or specified in the specifications without consideration of substitute or "or equal" items or methods unless the Contract Documents explicitly permit such items or methods.
- ii. Bidders are encouraged to propose substitute methods, materials and equipment in the form of voluntary alternates as listed on the Bid Form.

V. CONSTRUCTION DOCUMENTS

The following list of documents issued by Goode Van Slyke Architecture, constitutes the basis of work for the project.

A. Documents:

- i. Soils Reports:
 - i. *Report of Geotechnical Engineering Services, Prepared by: Cardno ATC 02/08/13*
 - ii. *Report of Shear Wave Velocity Testing, Prepared by: Cardno ATC 03/18/13*
- ii. Project Manual:

Issued by Atlanta Public School System for Construction Manager Contract
Revised September 2010

DOCUMENT	DESCRIPTION
<i>Document Identification</i>	
Document 00001	Agreement
Document 00002	Table of Contents
Document 00003	Project Directory
Document 00004	Index of Drawings
Document 00005	GMP Rider



ATTACHMENT A - GENERAL ITEMS

Mary Lin Elementary School
Addition & Renovations – RE-BID V
586 Candler Park Drive NE
Atlanta, GA 30307
Page 4 of 13

GMP Summary Sheet

General Conditions

Document 00700 General Conditions of the Contract
Document 00825 Supplemental Conditions

Division 1: General Requirements

Section 01005 Administrative Provisions
Attachments:
Construction Manager's Final Affidavit and Release
Non-Influence Affidavit
Performance Bond
Payment Bond
Certification of Competitive Bids
Contractor Immigration and Control Affidavit and Agreement
Subcontractor Immigration and Control Affidavit and Agreement
Section 01010 Summary of Work
Section 01045 Cutting and Patching
Section 01120 Project Procedures
Section 01220 Progress Meetings
Section 01300 Submittals
Section 01400 Quality Control
Section 01500 Construction Facilities & Temporary Controls
Section 01600 Materials and Equipment
Section 01655 Starting of Mechanical Systems
Section 01700 Contract Closeout
Section 01710 Cleaning

iii. Project Specification Manual: *Construction Release*

DIVISION	DESCRIPTION	DATE
<i>Division 00 Procurement and Contracting Requirements</i>		
00 0101	Project Title Page	7/15/13
00 0105	Seals Page	7/15/13
00 0110	Table of Contents	7/15/13
<i>Division 01 General Requirements</i>		
01 4150	Special Inspections	7/15/13
<i>Division 02 Existing Conditions</i>		
02 3000	Subsurface Investigations	7/15/13
02 4113	Selective Site Demolition	7/15/13
02 4119	Selective Demolition	7/15/13
<i>Division 03 Concrete</i>		
03 3000	Cast-In-Place Concrete	7/15/13
03 3500	Concrete Finishing	7/15/13
03 8215	Concrete Coring and Leveling	7/15/13
<i>Division 04 Masonry</i>		



ATTACHMENT A - GENERAL ITEMS

Mary Lin Elementary School
Addition & Renovations – RE-BID V
586 Candler Park Drive NE
Atlanta, GA 30307
Page 5 of 13

04 0120	Masonry Restoration and Cleaning	7/15/13
04 0500	Mortar and Masonry Grout	7/15/13
04 0523	Masonry Accessories	7/15/13
04 2200	Concrete Unit Masonry	7/15/13
04 4320	Rubble Stone Masonry	7/15/13
04 7200	Cast Stone Masonry	7/15/13

Division 05 Metals

05 1200	Structural Steel	7/15/13
05 2000	Steel Joists/Girders	7/15/13
05 3110	Composite Steel Floor Deck	7/15/13
05 3150	Steel Roof Deck	7/15/13
05 4000	Cold Formed Metal Framing	7/15/13
05 5000	Metal Fabrications	7/15/13
05 5100	Steel Stairs	7/15/13
05 5190	Steel Handrails and Railings	7/15/13
05 7320	Architectural Steel Railings	7/15/13
05 7325	Architectural Aluminum Railings	7/15/13

Division 06 Woods, Plastics, and Composites

06 1000	Rough Carpentry	7/15/13
06 1300	Heavy Timber Construction	7/15/13
06 4116	Laminate Casework	7/15/13
06 6116	Solid Surfacing Fabrications	7/15/13

Division 07 Thermal and Moisture Protection

07 1300	Membrane Waterproofing	7/15/13
07 1600	Elevator Pit Waterproofing	7/15/13
07 1900	Water-Repellent Coating	7/15/13
07 2100	Thermal Insulation	7/15/13
07 2616	Vapor Barrier	7/15/13
07 2726	Vapor-Permeable Fluid-Applied Air Barrier	7/15/13
07 2800	Elastomeric Coating	7/15/13
07 4213	Metal Wall Panels	7/15/13
07 4243	Composite Metal Panels	7/15/13
07 4600	Ceramic Wall Panels	7/15/13
07 5216	Modified Bitumen Roof Membrane System	7/15/13
07 5442	Adhered Single-Ply Roofing	7/15/13
07 6000	Flashing and Sheet Metal	7/15/13
07 7233	Roof Hatches	7/15/13
07 8400	Firestopping	7/15/13
07 9200	Joint Sealants	7/15/13
07 9500	Expansion Control	7/15/13

Division 08 Openings

08 1100	Hollow Metal Doors and Frames	7/15/13
08 1400	Wood Doors	7/15/13
08 3100	Access Doors and Panels	7/15/13
08 3613	Glazed Sectional Doors	7/15/13
08 4113	Aluminum-Framed Entrances and Storefronts	7/15/13
08 4413	Glazed Aluminum Curtain Walls	7/15/13
08 7100	Door Hardware	7/15/13



ATTACHMENT A - GENERAL ITEMS

Mary Lin Elementary School
Addition & Renovations – RE-BID V
586 Candler Park Drive NE
Atlanta, GA 30307
Page 6 of 13

08 8000	Glazing	7/15/13
---------	---------	---------

Division 09 Finishes

09 2205	Furring and Lathing	7/15/13
09 2423	Stucco	7/15/13
09 2424	Stucco Repair	7/15/13
09 2900	Gypsum Board	7/15/13
09 3000	Tiling	7/15/13
09 5100	Acoustical Ceilings	7/15/13
09 6513	Resilient Base/Accessories/Stair Accessories	7/15/13
09 6519	Resilient Floor Tile	7/15/13
09 6566	Athletic Flooring	7/15/13
09 6618	Precast Epoxy Terrazzo	7/15/13
09 6723	Resinous Flooring	7/15/13
09 6800	Carpet Tiles	7/15/13
09 7713	Acoustical Panels	7/15/13
09 9000	Painting and Coatings	7/15/13

Division 10 Specialties

10 1100	Visual Display Units	7/15/13
10 1200	Display Cases	7/15/13
10 1419	Exterior Signage w/ Exhibit A	7/15/13
10 1423	Interior Unframed Signage w/ Exhibit A	7/15/13
10 1463	LED Exterior Monument Sign w/ Exhibit A	7/15/13
10 2115	Plastic Toilet Compartments	7/15/13
10 2813	Toilet Accessories	7/15/13
10 4400	Fire Protection Specialties	7/15/13
10 5113	Metal Lockers	7/15/13
10 5613	Metal Storage Shelving	7/15/13
10 7316	Canopies	7/15/13
10 7500	Flagpoles	7/15/13

Division 11 Equipment

11 4000	Foodservice Equipment	7/15/13
11 4100	Food Storage Equipment	7/15/13
11 5213	Projection Screens	7/15/13

Division 12 Furnishings

12 2113	Horizontal Louver Blinds	7/15/13
12 9313	Bicycle Racks	7/15/13
12 9343	Site Seating	7/15/13

Division 13 Special Construction

No Sections Required

Division 14 Conveying Systems

14 2123	Traction Elevator	7/15/13
---------	-------------------	---------

Divisions 15 to 20

No Sections Required

Division 21 Fire Suppression



ATTACHMENT A - GENERAL ITEMS

Mary Lin Elementary School
Addition & Renovations – RE-BID V
586 Candler Park Drive NE
Atlanta, GA 30307
Page 7 of 13

21 0517	Sleeves and Sleeve Seals for Fire-Suppression Piping	7/15/13
21 0518	Escutcheons for Fire-Suppression Piping	7/15/13
21 0553	Identification for Fire-Suppression Piping and Equipment	7/15/13
21 1100	Facility Fire-Suppression Water-Service Piping	7/15/13
21 1313	Wet-Pipe Sprinkler Systems	7/15/13

Division 22 Plumbing

22 0513	Common Motor Requirements for Plumbing Equipment	7/15/13
22 0517	Sleeves and Sleeve Seals for Plumbing Piping	7/15/13
22 0518	Escutcheons for Plumbing Piping	7/15/13
22 0519	Meters and Gages for Plumbing Piping	7/15/13
22 0523	General-Duty Valves for Plumbing Piping	7/15/13
22 0529	Hangers and Supports for Plumbing Piping and Equipment	7/15/13
22 0553	Identification for Plumbing Piping and Equipment	7/15/13
22 0719	Plumbing Piping Insulation	7/15/13
22 1116	Domestic Water Piping	7/15/13
22 1119	Domestic Water Piping Specialties	7/15/13
22 1123	Domestic Water Pumps	7/15/13
22 1316	Sanitary Waste and Vent Piping	7/15/13
22 1319	Sanitary Waste Piping Specialties	7/15/13
22 1429	Sump Pumps	7/15/13
22 3300	Electric, Domestic-Water Heaters	7/15/13
22 3400	Fuel-Fired Domestic Water Heaters	7/15/13
22 4213.13	Commercial Water Closets	7/15/13
22 4213.16	Commercial Urinals	7/15/13
22 4216.13	Commercial Lavatories	7/15/13
22 4216.16	Commercial Sinks	7/15/13
22 4223	Commercial Showers	7/15/13
22 4716	Pressure Water Coolers	7/15/13

Division 23 Heating Ventilating and Air Conditioning

23 0500	Common Work Results for HVAC	7/15/13
23 0513	Common Motor Requirements for HVAC Equipment	7/15/13
23 0519	Meters and Gages for HVAC Piping	7/15/13
23 0523	General-Duty Valves for HVAC Piping	7/15/13
23 0529	Hangers and Supports for HVAC Piping and Equipment	7/15/13
23 0553	Identification for HVAC Piping and Equipment	7/15/13
23 0593	Testing, Adjusting, and Balancing for HVAC	7/15/13
23 0700	HVAC Insulation	7/15/13
23 0900	Instrumentation and Controls for HVAC	7/15/13
23 0993	Sequence of Operations for HVAC Controls	7/15/13
23 1123	Facility Natural-Gas Piping	7/15/13
23 2113	Hydronic Piping	7/15/13
23 2123	Hydronic Pumps	7/15/13
23 2500	HVAC Water Treatment	7/15/13
23 3113	Metal Ducts	7/15/13
23 3300	Air Duct Accessories	7/15/13
23 3416	Centrifugal HVAC Fans	7/15/13
23 3600	Air Terminal Units	7/15/13
23 5216	Condensing Boilers	7/15/13
23 5700	Heat Exchangers for HVAC	7/15/13
23 6500	Cooling Towers	7/15/13



ATTACHMENT A - GENERAL ITEMS

Mary Lin Elementary School
Addition & Renovations – RE-BID V
586 Candler Park Drive NE
Atlanta, GA 30307
Page 8 of 13

23 7200	Packaged Energy Recovery Units	7/15/13
23 8146	Water-Source Unitary Heat Pumps	7/15/13

Divisions 24 and 25
No Sections Required

Division 26 Electrical

26 0100	Electrical General Provisions	7/15/13
26 0120	Architectural Criteria for Division 26 Systems	7/15/13
26 0500	Basic Materials and Methods	7/15/13
26 2000	Services and Distribution	7/15/13
26 3200	Emergency/Stand-by Power Systems Generator Set	7/15/13
26 3600	Emergency/Stand-by Power Systems Transfer Switches	7/15/13
26 5000	Lighting	7/15/13

Division 27 Communications

27 1000	Data/Voice Cabling Distribution System	7/15/13
27 4116.62	Auditorium Sound System	7/15/13
27 4116.63	Gymnasium Sound System	7/15/13
27 5113	Integrated Telecommunication Center	7/15/13

Division 28 Electronic Safety and Security

28 1600	Intrusion Detection	7/15/13
28 2000	Access Control System	7/15/13
28 2300	Web-Based CCTV Security System	7/15/13
28 3000	Fire Alarm	7/15/13

Divisions 29 and 30
No Sections Required

Division 31 Earthwork

31 1000	Site Clearing	7/15/13
31 1300	Selective Tree and Shrub Timing and Removal	7/15/13
31 2219	Finish Grading	7/15/13
31 2300	Excavation and Fill	7/15/13
31 2500	Erosion and Sediments Controls	7/15/13
31 3116	Termite Controls	7/15/13

Division 32 Exterior Improvements

32 1200	Flexible Paving	7/15/13
32 1244	Flexible Porous Pavement – Grasspave	7/15/13
32 1300	Rigid Paving	7/15/13
32 1600	Curbs and Gutters	7/15/13
32 3113	Chain Link Fences and Gates	7/15/13
32 3119	Decorative Metal Fences and Gates	7/15/13
32 9113	Planting Soil Mixes	7/15/13
32 9219	Seeding	7/15/13
32 9300	Plants	7/15/13

Division 33 Utilities

33 1000	Water Utilities	7/15/13
---------	-----------------	---------



ATTACHMENT A - GENERAL ITEMS

Mary Lin Elementary School
Addition & Renovations – RE-BID V
586 Candler Park Drive NE
Atlanta, GA 30307
Page 9 of 13

33 3000	Sanitary Sewerage Utilities	7/15/13
33 4000	Storm Drainage Utilities	7/15/13

B. Drawings:

As-Built Documents

All As-Built Documents provided by Atlanta Public Schools for the existing facilities are included.

Construction Set

SHEET	DRAWING TITLE	DATE
	Title Sheet by Goode Van Slyke Architecture	
T-000	Cover Sheet	7/15/13
	Civil Drawings by Travis Pruitt & Associates	
C1.1	Cover Sheet	8/28/13
1 of 3	Boundary, Topographic, Tree, & Utility Survey	1/2/13
2 of 3	Boundary, Topographic, Tree, & Utility Survey	1/2/13
3 of 3	Boundary, Topographic, Tree, & Utility Survey	1/2/13
C3.1	Site Demolition Plan	8/28/13
C3.2	Site Demolition Plan	8/28/13
C4.1	Site Layout Plan	8/28/13
C4.2	Site Layout Plan	8/28/13
C5.1	Grading Plan	8/28/13
C5.2	Grading Plan	8/28/13
C6.1	Utility Plan	8/28/13
C6.2	Utility Plan	8/28/13
C7.1	Erosion Control Plan - (Initial Phase)	8/28/13
C7.2	Erosion Control Plan - (Initial Phase)	8/28/13
C7.3	Erosion Control Plan - (Intermediate Phase)	8/28/13
C7.4	Erosion Control Plan - (Intermediate Phase)	8/28/13
C7.5	Erosion Control Plan - (Final Phase)	8/28/13
C7.6	Erosion Control Plan - (Final Phase)	8/28/13
C8.1	Erosion, Sedimentation and Pollution Control Notes	8/28/13
C8.2	Erosion, Sedimentation and Pollution Control Notes	8/28/13
C8.3	Erosion, Sedimentation and Pollution Control Notes	8/28/13
C9.1	Profiles	8/28/13
C9.2	Profiles	8/28/13
C9.3	Profiles	8/28/13
C9.4	Profiles	8/28/13
C10.1	Construction Details	8/28/13
C10.2	Construction Details	8/28/13
C10.3	Construction Details	8/28/13
C10.4	Construction Details	8/28/13
C10.5	Construction Details	8/28/13
C10.6	Construction Details	8/28/13
C10.7	Construction Details	8/28/13
C10.8	Construction Details	8/28/13
C10.9	Construction Details	8/28/13



ATTACHMENT A - GENERAL ITEMS

Mary Lin Elementary School
Addition & Renovations – RE-BID V
586 Candler Park Drive NE
Atlanta, GA 30307
Page 10 of 13

C10.10	Construction Details	8/28/13
C10.11	Construction Details	8/28/13
C11.1	Pre-Developed Drainage Map	8/27/13
C11.2	Post-Developed Drainage Map	8/27/13
Landscape Drawings by Laubmann Rector, Inc.		
L1.01	Tree Protection & Removal Plan	7/15/13
L1.02	Tree Replacement Plan	7/15/13
L1.03	Schematic Planting Plan	7/15/13
L1.04	Tree Protection & Removal Notes, Arborist Info	7/15/13
L1.05	Planting Details, Notes & Schedules	7/15/13
L10.6	Off-Site Location #1 A&C Notes, Map, Plans	7/15/13
Architectural Drawings by Goode Van Slyke Architecture		
A-000	Cover Sheet	7/15/13
A-001	Life Safety Calculations	5/28/13
A-002	Life Safety Plans - Main Level	7/15/13
A-003	Life Safety Plans - Upper & Lower Levels	7/15/13
A-005	Accessibility Details	5/28/13
A-006	Plumbing Calculations	5/28/13
A-020	Door Schedule	7/15/13
A-021	Window Schedule	7/15/13
A-022	Partition Types / Head Jamb Sill	7/15/13
A-023	Finish Schedule	7/15/13
A-024	Finish Board – Colors and Material Types I	7/15/13
A-025	Finish Board – Colors and Material Types II	7/15/13
A-050	Floor Plan - Existing Conditions - Main Level	5/28/13
A-051	Floor Plan - Existing Conditions - Upper/Lower Level	5/28/13
A-052	Demolition Plan - Lower Level	5/28/13
A-053	Demolition Plan - Main Level Admin	5/28/13
A-054	Demolition Plan - Existing Three Story Building	7/15/13
A-055	Demolition Plan - Main Level Gym Addition	5/28/13
A-060	Site Plan - Existing Conditions	5/28/13
A-061	Site Plan – Proposed	7/15/13
A-062	Site – Layout Plan	7/15/13
A-080	Site – Details	7/15/13
A-100	Floor Plan – Overall Main Level	5/28/13
A-101	Floor Plan – Overall Upper Level	5/28/13
A-102	Floor Plan – Overall Lower Level	5/28/13
A-103	Roof Plan	7/15/13
A-130	Floor Plan Lower Level – Addition	7/15/13
A-131	Floor Plan Main Level – Admin	7/15/13
A-132	Floor Plan Main Level – Existing Building	7/15/13
A-133	Floor Plan Main Level – New Addition	7/15/13
A-134	Floor Plan Main Level – Gym Addition	7/15/13
A-135	Enlarged Plans – Toilet Rooms	7/15/13
A-136	Enlarged Plans – Misc	7/15/13
A-150	Plan Details	7/15/13
A-151	Plan Details	7/15/13
A-152	Plan Details	7/15/13
A-153	Plan Details	7/15/13
A-190	Roof Details	7/15/13



ATTACHMENT A - GENERAL ITEMS

Mary Lin Elementary School
Addition & Renovations – RE-BID V
586 Candler Park Drive NE
Atlanta, GA 30307

Page 11 of 13

A-200	Reflected Ceiling Plan Lower Level – Addition	7/15/13
A-201	Reflected Ceiling Plan Main Level – Admin	7/15/13
A-202	Reflected Ceiling Plan Main Level – Existing Building	7/15/13
A-203	Reflected Ceiling Plan Main Level – New Addition	7/15/13
A-204	Reflected Ceiling Plan Main Level – Gym Addition	7/15/13
A-250	Reflected Ceiling Plan Details	5/28/13
A-300	Exterior Elevations – Existing	5/28/13
A-301	Exterior Elevations – Proposed	7/15/13
A-302	Exterior Elevations – Proposed	7/15/13
A-303	Exterior Elevations – Proposed/Enlargements	7/15/13
A-410	Wall Sections – New Addition	7/15/13
A-411	Wall Sections – Stair #4	7/15/13
A-412	Wall Sections – Cafeteria	7/15/13
A-413	Wall Sections – Kitchen / Cafeteria	7/15/13
A-414	Wall Sections – Hallway 1232	7/15/13
A-415	Wall Sections – Bridge / Connector	7/15/13
A-416	Wall Sections – Main Lobby	7/15/13
A-417	Wall Sections – Firewall	7/15/13
A-418	Wall Sections – Main Lobby II	7/15/13
A-419	Wall Sections – Administration I	7/15/13
A-420	Wall Sections – Administration II	7/15/13
A-450	Section Details	7/15/13
A-530	Finish Plan Lower Level – Addition	7/15/13
A-531	Finish Plan Main Level – Admin	7/15/13
A-532	Finish Plan Main Level – Existing Building	7/15/13
A-533	Finish Plan Main Level – New Addition	7/15/13
A-534	Finish Plan Main Level – Gym Addition	7/15/13
A-535	Finish Plan Upper Level	7/15/13
A-600	Interior Elevations – Casework/Main Lobby 1115	7/15/13
A-601	Interior Elevations – Main Lobby 1116/Connector 1400	7/15/13
A-620	Interior Elevations – Restrooms	5/28/13

Structural Drawings by Pruitt Eberly Stone

S-001	General Notes	7/15/13
S-002	General Notes and Schedules	7/15/13
S-003	General Schedules and Special Inspections Tables	7/15/13
S-101	Lower Level Foundation Plan – Classroom Addition	7/15/13
S-201	Main Level Foundation & Framing Plan – Classroom Addition	7/15/13
S-202	Main Level Foundation Plan – Admin/Lobby/Media Center	7/15/13
S-301	Roof Framing Plan – Classroom Addition	7/15/13
S-302	Roof Framing Plan – Admin/Lobby/Media Center	7/15/13
S-401	Sections & Details	7/15/13
S-402	Sections & Details	7/15/13
S-403	Sections & Details	7/15/13
S-404	Sections & Details	7/15/13
S-405	Sections & Details	7/15/13
S-406	Sections & Details	8/28/13
S-407	Sections & Details	7/15/13
S-408	Sections & Details	7/15/13
S-409	Sections & Details	7/15/13
S-410	Sections & Details	7/15/13
S-411	Sections & Details	7/15/13



ATTACHMENT A - GENERAL ITEMS

Mary Lin Elementary School
Addition & Renovations – RE-BID V
586 Candler Park Drive NE
Atlanta, GA 30307

Page 12 of 13

S-412	Sections & Details	7/15/13
S-501	Brace Details & Elevations	7/15/13
S-502	Brace Elevations	7/15/13
S-503	Brace Elevations	7/15/13
S-601	Shear Wall Details & Elevations	7/15/13

Mechanical Drawings by AHA Consulting Engineers

H-001	HVAC Legend, Notes, and Schedules	7/15/13
H-002	HVAC Schedules	7/15/13
H-003	HVAC Schedules	7/15/13
H-004	HVAC Details	7/15/13
H-005	HVAC Details	5/28/13
H-006	HVAC Water Flow Schematic	7/15/13
H-100	HVAC Overall Main Level Plan	5/28/13
H-101	HVAC Overall Upper and Lower Level Plans	5/28/13
H-102	HVAC Roof Plan	7/15/13
H-130	HVAC Lower Level Plan	7/15/13
H-131	HVAC Main Level Plan – Admin	7/15/13
H-132	HVAC Main Level Plan – Addition	7/15/13
H-230	HVAC Lower Level Plan	7/15/13
H-232	HVAC Main Level Plan – Addition	5/28/13

Plumbing Drawings by AHA Consulting Engineers

P-001	Plumbing Schedules, Legend, and Details	5/28/13
P-002	Plumbing Details	5/28/13
P-100	Plumbing Overall Main Level Plan	5/28/13
P-101	Plumbing Overall Upper and Lower Level Plans	5/28/13
P-130A	Plumbing Lower Level Plan – Sanitary	7/15/13
P-130B	Plumbing Lower Level Plan – Water and Gas	7/15/13
P-131A	Plumbing Main Level Plan – Admin Sanitary	7/15/13
P-131B	Plumbing Main Level Plan – Admin Water and Gas and Gas Riser	7/15/13
P-132A	Plumbing Main Level Plan – Addition Sanitary	5/28/13
P-132B	Plumbing Main Level – Addition Water and Gas	5/28/13
P-133A	Plumbing Upper Level Plan – Sanitary	5/28/13
P-133B	Plumbing Upper Level Plan – Water and Gas	5/28/13
P-201	Plumbing Enlarged Plan and Risers – Sanitary	7/15/13
P-202	Plumbing Enlarged Plan and Risers – Water	5/28/13
P-203	Plumbing Enlarged Plan – Grease Waste	5/28/13
P-204	Plumbing Enlarged Plan – Water	7/15/13

Electrical Drawings by Bolden-Williams & Associates, Inc.

E-101	Electrical Legend, Schedules, Notes and Details	7/15/13
E-102	Electrical Site Plan	7/15/13
E-201	Electrical Overall Plans	7/15/13
E-301	Electrical Lower Level Floor Plan Lighting	7/15/13
E-311	Electrical Main Level Partial Floor Plan Lighting	7/15/13
E-312	Electrical Main Level Partial Floor Plan Lighting	7/15/13
E-313	Electrical Main Level Partial Floor Plan Lighting	7/15/13
E-321	Electrical Upper Level Floor Plan Lighting	7/15/13
E-401	Electrical Lower Level Floor Plan Power	7/15/13
E-402	Electrical Lower Level Partial Floor Plan Power – Kitchen	7/15/13
E-411	Electrical Main Level Partial Floor Plan Power	7/15/13



ATTACHMENT A - GENERAL ITEMS

Mary Lin Elementary School
Addition & Renovations – RE-BID V
586 Candler Park Drive NE
Atlanta, GA 30307

Page 13 of 13

E-412	Electrical Main Level Partial Floor Plan Power	7/15/13
E-413	Electrical Main Level Partial Floor Plan Power	7/15/13
E-421	Electrical Upper Level Floor Plan Power	7/15/13
E-501	Electrical Lower Level Floor Plan Special Systems	7/15/13
E-511	Electrical Main Level Partial Floor Plan Special Systems	7/15/13
E-512	Electrical Main Level Partial Floor Plan Special Systems	7/15/13
E-513	Electrical Main Level Partial Floor Plan Special Systems	7/15/13
E-521	Electrical Upper Level Floor Plan Special Systems	7/15/13
E-601	Electrical Lower Level Floor Plan – Mechanical	7/15/13
E-611	Electrical Main Level Partial Floor Plan – Mechanical	7/15/13
E-612	Electrical Main Level Partial Floor Plan – Mechanical	7/15/13
E-701	Electrical Riser Diagram	7/15/13
E-702	Electrical Riser Diagram Notes, Details, and Schedules	7/15/13
E-703	Electrical Panel Schedules	7/15/13
E-704	Electrical Panel Schedules	7/15/13
E-801	Electrical Telecommunication Riser Diagram, Notes And Details	7/15/13
Kitchen Drawings by Camacho Associates, Inc.		
K1.1	Kitchen Equipment Floor Plan	7/15/13
K2.1	Kitchen Equipment Schedules	7/15/13
K3.1	Kitchen Plumbing Connection Plan	7/15/13
K3.2	Kitchen Floor Slope Plan	7/15/13
K4.1	Kitchen Electrical Connection Plan	7/15/13
K5.1	Kitchen Walk-In Cooler/Freezer Details and Details and Elevations	7/15/13
K5.2	Kitchen Details and Elevations	7/15/13

END OF ATTACHMENT A



**ATTACHMENT B – SCOPE OF WORK
BID PACKAGE 1B – SITE CONCRETE &
BID PACKAGE 3 – BUILDING CONCRETE**

Mary Lin Elementary School
Addition & Renovations – RE-BID V
586 Candler Park Drive NE
Atlanta GA 30307
Page 1 of 7

I. SCOPE of WORK – OVERVIEW

- A. A brief description of work for this Proposal package is included. It is to be used as a guide to the Bidder in understanding the Scope of Work for the Project, but shall not be construed as being all inclusive of the Work described in the Construction Documents (Plans & Specifications). The information in the Construction Documents shall rule.
- B. Subcontractor specifically agrees to perform the Work in strict accordance with the Construction Document (Plans & Specifications) which are listed for reference in Attachment A – Section V. The general Scope of Work includes a full review of an entire set of contract drawings and specifications.
- C. Bidding subcontractors should review and be familiar with the approved subcontractor agreement. Acceptances of all terms are required to be awarded work.
- D. Bidders shall include all costs for equipment, tools, materials, labor, engineering, supervision and all other services required to complete the Work described in the Construction Documents.
- E. Subcontractors shall secure and pay for all necessary permits and inspections required to complete their Scope of Work. Final certificates of inspection and approval are required before final payment is made.
- F. Subcontractors shall cooperate with other subcontractors working in the vicinity of the Work of this Project and shall endeavor to resolve conflicts in their respective work without impacting other trades or the General Contractor Master Schedule.
- G. Responsibility, for control of all on-site vehicular and personnel movements, is solely that of the subcontractor. Cost for repairing damages to the Work of this subcontractor, as well as others, as a result of failure to control activities, shall be borne by the subcontractor causing the damage.
- H. Direct any and all questions on the correct Request for Information Form (Attachment D) to:

Bryan Rogers
Sr. Project Manager
770.242.8588
BRogers@HoganConstructionGroup.com

The Owner (Atlanta Independent School System) and/or Architect (Goode Van Slyke Architects) **ARE NOT** to be contacted directly.



**ATTACHMENT B – SCOPE OF WORK
BID PACKAGE 1B – SITE CONCRETE &
BID PACKAGE 3 – BUILDING CONCRETE**

Mary Lin Elementary School
Addition & Renovations – RE-BID V
586 Candler Park Drive NE
Atlanta GA 30307
Page 2 of 7

II. SCOPE of WORK – GENERAL ITEMS

- A. Subcontractors shall field check all necessary dimensions of all work and/or associated material whether furnished and/or installed by others or by Subcontractor to assure final proper fit and function of the work before fabrication commences. All work or rework necessitated by Subcontractors' failure to meet this requirement shall be done at Subcontractors' own expense.
- B. All workmanship, materials, fixtures, specialties and equipment required shall be subject to an in accordance with the requirements of the applicable state, local and national codes and standards under which the installation is made. Work and materials specifically required by the state, local and national codes which are not specifically called out for in the Contract Documents, but necessary to complete the scope of work are the responsibility of the Subcontractor. These items shall be furnished and installed by the Subcontractor at their own expense.
- C. Subcontractor shall do all cutting and patching necessary for the installation of their scope of work. Please refer to Attachment A – General Items, Section II, Item G.
- D. Prior to starting work, subcontractors must inspect those areas prepared for your work and notify Hogan Construction Group of any deficiencies which impact your work. This inspection shall be done no less than five (5) working days from the anticipated start of activity.
- E. Subcontractor is responsible for the continuous and daily clean-up of their construction activities. Failure to perform clean-up activities will result in back-charges for supplemental labor to complete this requirement.

III. SCOPE of WORK – TRADE SPECIFIC: BID PACKAGE 1B – SITE CONCRETE

- A. Furnish and install all labor, materials, and equipment necessary to complete the Site Concrete as per the Contract Documents. Site Concrete shall include all horizontal concrete work including but not limited to Concrete Paving; Header Curb, Flush Header Curb, Valley Curb, Rollback Curb, Gutters, Stone Base under Curb & Gutter, Throats and Tops, Sidewalks, Stairs on Grade, Handicap Ramps, Truncated Dome Caps, Curb Tie In, Raised Cross Walks including pavers, Amphitheater, etc.
- B. Subcontractor will provide necessary skilled manpower to comply with the project schedule, and as directed by Hogan Construction Group Superintendent.
- C. Subcontractor shall provide adequate supervision and skilled labor to complete the work efficiently, and in accordance with the contract documents.
- D. Furnish and install all formwork necessary for all sidewalks, curbs, flume, and etc.
- E. Backfill Curbs as per the Contract Documents.
- F. Subcontractor to install construction control, and expansion joint material and installation for sidewalks, curbs, flume, and etc.



**ATTACHMENT B – SCOPE OF WORK
BID PACKAGE 1B – SITE CONCRETE &
BID PACKAGE 3 – BUILDING CONCRETE**

Mary Lin Elementary School
Addition & Renovations – RE-BID V
586 Candler Park Drive NE
Atlanta GA 30307

Page 3 of 7

- G. Remove and dispose of reinforcing and concrete waste to the satisfaction of the Construction Manager.
- H. Subcontractor shall provide subsurface preparation including removal of substandard materials and placement, fine grading and compaction and all tests rolling.
- I. Subcontractor has reviewed the drawings and specifications and included all costs associated with the scope of this work, including components not shown on the contract documents that may be required to make a complete system.
- J. Proof rolling is included of accepted areas to be paved prior to commencement of work is included. Commencement by the subcontractor indicates acceptance of the grade and compaction.
- K. Place site concrete as to have positive drainage throughout installation.
- L. Subcontractor to repair any adjacent structures damaged during the installation of site concrete.
- M. All gravel bases as required under site concrete.
- N. All clean up and removal from the site of debris caused by this subcontractor's work. Clean up of all streets during and after installation including final clean up.
- O. Subcontractor has included protection of all work contained in this scope until acceptance by Hogan Construction Group.
- P. Subcontractor will be responsible for all costs associated with improperly placed work and will borne all labor to repair and/or replace it as required.
- Q. Subcontractor has included all costs associated with bad weather protection as required to perform their scope of work and in compliance with the construction schedule.
- R. Subcontractor shall provide all barricades, signage, and other safety measures necessary to assure the public safety and the safety of other subcontractors.
- S. Subcontractor shall accept existing grade prior to beginning work.
- T. Subcontractor shall perform and provide all equipment for fine grading.
- U. Subcontractor shall perform work as to provide continual jobsite access as determined by Hogan Construction Group.
- V. Subcontractor shall review and price accordingly revisions shown on civil plans and S-406, per Addendum No. 5.
- W. Subcontractor shall include pervious concrete at north parking lot shown on C4.1, noted as new pervious pavement.



**ATTACHMENT B – SCOPE OF WORK
BID PACKAGE 1B – SITE CONCRETE &
BID PACKAGE 3 – BUILDING CONCRETE**

Mary Lin Elementary School
Addition & Renovations – RE-BID V
586 Candler Park Drive NE
Atlanta GA 30307
Page 4 of 7

- X. Subcontractor shall include concrete subbase and concrete pavers for new speed hump across Candler Park Drive shown on C4.2 and detail on C10.10.
- Y. Subcontractor shall include concrete site retaining walls and footings.
- Z. Subcontractor shall include concrete formliner at site retaining walls per contract documents.
- AA. Subcontractor shall include concrete planter walls and footings.
- BB. Subcontractor shall include sawcutting existing asphalt at new speed hump on Candler Park Drive and haul-off of material from the jobsite.
- CC. Subcontractor shall include installation of ¼" steel floor plate (provided by others) at new speed hump.
- DD. Subcontractor shall include curb & gutter, throats and tops, header curb, flush header curb and roll back curb per contract documents.
- EE. Subcontractor shall include amphitheater, planter walls, site stairs and dumpster pad.
- FF. Subcontractor shall include generator and transformer pads.
- GG. Subcontractor shall include colored concrete at amphitheater plaza and main entry of New 1-Story Addition as shown on A-530 and A-531.
- HH. Subcontractor shall include handicap ramps, including ADA mats as required.

IV. SCOPE of WORK – TRADE SPECIFIC: BID PACKAGE 3 - BUILDING CONCRETE

- A. Subcontractor shall provide all material, equipment, and labor necessary to complete the Building Concrete and Site Wall Concrete.
- B. Subcontractor to furnish all equipment necessary to perform the work, including saws, eye protection, and hardhats as required to complete the work in an organized and safe manner. Temporary task lighting above that of which is provided by the on-site electrician will be provided by this Subcontractor as required to maintain the schedule.
- C. Subcontractor will provide necessary skilled manpower to comply with the project schedule, and as directed by Hogan Construction Group Superintendent.
- D. Coordinate all wall penetrations with various trades to insure clean, accurate, square and neat openings. No rough edges.



**ATTACHMENT B – SCOPE OF WORK
BID PACKAGE 1B – SITE CONCRETE &
BID PACKAGE 3 – BUILDING CONCRETE**

Mary Lin Elementary School
Addition & Renovations – RE-BID V
586 Candler Park Drive NE
Atlanta GA 30307

Page 5 of 7

- E. This subcontract includes all cost for all construction joints as necessary for a complete job.
- F. Install all impalement protection of rebar required to meet the safety requirements of this project. Materials to be provided by Hogan Construction Group.
- G. Subcontractor will protect and repair damages to adjacent surfaces.
- H. All trash and debris will be disposed of in a timely manner and as directed by Hogan Construction Group Superintendent to dumpster(s) provided by Hogan Construction Group.
- I. Design, furnish, install and remove all formwork, bracing, as required to maintain the job schedule.
- J. Subcontractor shall perform all layout associated with this scope of work. Layout includes batter boards, carpenter foreman, line and grade, string, and all necessary labor, material, and equipment to pull from control points at center line of columns provided by Hogan Construction Group.
- K. Subcontractor shall provide adequate supervision and skilled labor to complete the work efficiently, and in accordance with the contract documents.
- L. Furnish and install all formwork necessary for all equipment pads, etc. As required by Contract Documents.
- M. Backfill and compact interior building concrete walls and footings associated with this scope of work.
- N. Clean up all concrete, debris, formwork, form oil, curing compound, or other excess materials created by leakage, seepage form failure, stripping, overspray or other operations.
- O. Subcontractor to furnish and install construction control, and expansion joint material and installation for all building concrete work.
- P. Comply with requirements for exposed finished work including rubbing or remedial work. All concrete surfaces and tolerances must meet or exceed the requirements of the contract documents. All finish work that does not meet these standards will be removed and replaced at this subcontractor's expense within 24 hours notification by the Construction Manager.
- Q. Slab depressions and block-outs as required and shown on contract documents. Subcontractor to coordinate with shop drawings and/or suppliers to insure proper dimensions.
- R. All ready-mix concrete and reinforcing steel shall be furnished in this scope of work.
- S. Acceptance, unloading, inventory, and proper storage of all reinforcing steel by this subcontractor. Subcontractor shall be responsible for accuracy of deliveries and inventory, and



ATTACHMENT B – SCOPE OF WORK
BID PACKAGE 1B – SITE CONCRETE &
BID PACKAGE 3 – BUILDING CONCRETE

Mary Lin Elementary School
Addition & Renovations – RE-BID V
586 Candler Park Drive NE
Atlanta GA 30307

Page 6 of 7

- will inform Construction Manager in writing of any errors, omissions or discrepancies in delivery tickets at the time of delivery.
- T. Furnish and install all reinforcing steel, tie wire, wire mesh chairs, bolsters and other items as required.
 - U. All horizontal site concrete is excluded including but not limited to paving, sidewalks, curb & gutter, etc.
 - V. Subcontractor will furnish, install, and maintain all safety rebar caps.
 - W. Subcontractor will distribute all approved copies of shop drawings to their field personnel for proper installation. Subcontractor will coordinate all concrete work with rebar shop dwgs, MEP block-out/sleeve/stub up dwgs for complete installation.
 - X. Furnish and install curing compounds per contract documents.
 - Y. Furnish and install all stone sub-grade, granular cushion, vapor barrier required below slab.
 - Z. Remove and dispose of reinforcing and concrete waste to the satisfaction of the Construction Manager.
 - AA. All scheduling and sequencing of deliveries in order to maintain and not delay progress schedule.
 - BB. Multiple mobilizations are included.
 - CC. Subcontractor will furnish and install all concrete pour back and footing work.
 - DD. Coordinate slab on grade pour with other subcontractors for timely installation of all underground rough-in.
 - EE. Furnish all torches, tanks, regulators, hoses, vibrators, utility saws, grinders, blades, and other equipment as necessary for cutting of materials. Re-steel will be shop fabricated, but field modifications may be required.
 - FF. All placing and finishing of block-outs and all openings as required.
 - GG. Furnish and install concrete bricks to support footing reinforcing steel as necessary.
 - HH. Furnish all saw-cutting including equipment in lieu of construction joint devices. All saw-cutting to be performed by walk-behind type equipment. Hand sawn joints not acceptable unless directed by Construction Manager.
 - II. Subcontractor to cooperate with the testing agencies for all necessary testing for this scope of work.



**ATTACHMENT B – SCOPE OF WORK
BID PACKAGE 1B – SITE CONCRETE &
BID PACKAGE 3 – BUILDING CONCRETE**

Mary Lin Elementary School
Addition & Renovations – RE-BID V
586 Candler Park Drive NE
Atlanta GA 30307

Page 7 of 7

- JJ. Subcontractor shall furnish and install foundation drainage (pipe, granular fill and fabric).
- KK. Subcontractor shall include approximately 3,500 SF of 4" SOG pour back at existing kitchen/cafeteria area.
- LL. Subcontractor shall furnish and install removable precast panels as shown on 7/S-412 and A-412.
- MM. Subcontractor shall include excavation and backfill for footings.
- NN. Subcontractor shall provide unit rate for miscellaneous pour backs, patches, etc.
- OO. Subcontractor shall include housekeeping pads for MEP equipment, layout by MEP's.
- PP. Subcontractor shall be responsible to provide a payment and performance bond.

END OF ATTACHMENT B



ATTACHMENT C – BID FORM

Mary Lin Elementary School
Addition & Renovations – RE-BID V
586 Candler Park Drive NE
Atlanta, GA 30307
Page 1 of 4

I. BID FORM

- A. *List the corresponding Bid Package being submitted on:*

BID PACKAGE: _____

- B. *List the following company information:*

Name of Bidder

Address of Bidder

City, State, Zip Code of Bidder

Telephone Number of Bidder

Email Address of Point of Contact for Bidder

- C. **PROPOSAL – BASE BID:**

After having carefully examined the Construction Documents for the project as well as any and all Addenda, and after including the provisions stipulated in Attachment A – General Items, do hereby offer to furnish all labor, supervision, materials, tools, equipment, transportation and other facilities necessary for the construction work required for this project as stated above for the price described below:

The Proposal Price shall be the Lump Sum Price of:

_____ (\$ _____)

for the work as described in the Construction Documents.

BID FORM CONTINUED ON PAGE 2.



ATTACHMENT C – BID FORM

Mary Lin Elementary School
Addition & Renovations – RE-BID V
586 Candler Park Drive NE
Atlanta, GA 30307
Page 2 of 4

D. *Itemized Breakout Pricing – included in Base Bid:*

1. Bonding:

- Bonding Rate: _____ %

E. *Alternate Pricing – Please submit additional suggestions on reverse of this sheet:*

1. Description: _____
Deduction if Accepted: _____ (\$ _____)
2. Description: _____
Deduction if Accepted: _____ (\$ _____)
3. Description: _____
Deduction if Accepted: _____ (\$ _____)
4. Description: _____
Deduction if Accepted: _____ (\$ _____)

F. *Changes in the Work:*

The Owner reserves the right to have any additional work done at a fixed negotiated cost which will include subcontractor profit and overhead. The undersigned indicates below that the fee will be based on the following percentage:

Total mark-up applied to changes in work, inclusive of all overhead and profit: _____ %

G. *Schedule:*

Time to complete the work in consecutive calendar days: _____ days.

BID FORM CONTINUED ON PAGE 3.



ATTACHMENT C – BID FORM

Mary Lin Elementary School
Addition & Renovations – RE-BID V
586 Candler Park Drive NE
Atlanta, GA 30307
Page 3 of 4

H. *Assumptions and Clarifications:*

Bidder is to list any assumptions or clarifications which were used to develop the Base Bid Proposal Price. Please submit all assumptions/clarifications in a separate document. This document must list the Project, Bid Package, Name of Bidder, Contact information of Bidder and Date.

I. *Acceptance of General Items:*

Please circle the appropriate response to the statements listed below:

- I accept all terms and conditions listed in Attachment A – General Items: YES NO
- I accept all terms and conditions listed in Attachment B – Scope of Work: YES NO

J. *Addenda:*

In proposing the Base Bid Proposal Price, the bidder acknowledges the receipt and inclusion of all addenda for the Project and specifically lists those addenda below:

Addenda	Date	Addenda	Date
_____	_____	_____	_____
_____	_____	_____	_____
_____	_____	_____	_____

K. *Minority Participation:*

The undersigned company is authorized to claim the following minority classification(s):

Minority Business Enterprise (MBE): _____

Women Owned Business Enterprise (WBE): _____

Disadvantaged Business Enterprise (DBE): _____

Other (Please Specify Type): _____

Authorizing Authority (City/County): _____

If your company is not a MWDBE, please indicate the percentage and total dollar amount of your proposed area of work that will incorporate minority participation.

Percentage: _____ Total Dollar Amount: _____

BID FORM CONTINUED ON PAGE 4.



ATTACHMENT C – BID FORM

Mary Lin Elementary School
Addition & Renovations – RE-BID V
586 Candler Park Drive NE
Atlanta, GA 30307
Page 4 of 4

L. SIGNATURES:

The Undersigned is doing business as a:

Sole Proprietor _____; or Partnership _____;

or Corporation _____ (incorporated in the State of _____);

and signs the Bid Form Proposal on the _____ day of _____, 2013.

This proposal will be held open for acceptance by Hogan Construction Group for thirty (30) days after the date as indicated above.

Signature: _____

Name: _____

Title: _____

Address: _____

END OF BID FORM.



Request for Information

Project:	Mary Lin Elementary School	No:	_____	Request Date:	_____
Location:	586 Candler Park Drive NE Atlanta GA 30307	Reason For Request:	<input type="checkbox"/> Insufficient Information <input type="checkbox"/> Engineering Conflict <input type="checkbox"/> Alternate Proposal <input type="checkbox"/> Other		
To:	Hogan Construction Group, LLC 5075 Avalon Ridge Parkway Norcross GA 30071	Action Requested:	<input type="checkbox"/> Clarification <input type="checkbox"/> Direction <input type="checkbox"/> Approval		
Attention:	Amy Sue Mann - Preconstruction	Probable Effect:	<input type="checkbox"/> Increase / Decrease Cost <input type="checkbox"/> Increase / Decrease Time <input type="checkbox"/> No Change		
Response Required By:	_____				

Reference: _____ Drawing No: _____ Detail No: _____ Spec. Section: _____

Information Needed:

Submitted By: _____

Recommendation:

Submitted By: _____

- ☐ Proceed With Recommended Solution
☐ Proceed With These Instructions:

Authorized Signature: _____

**Subcontractor Immigration and Control
Affidavit and Agreement**

**SUBCONTRACTOR IMMIGRATION AND CONTROL AFFIDAVIT AND
AGREEMENT**

By executing this affidavit, the undersigned subcontractor verifies its compliance with O.C.G.A. 13-10-91, stating affirmatively that the individual, firm or corporation which is engaged in the physical performance of services under a contract with _____ on behalf of Owner has registered with and is participating in a federal work authorization program operated by the United States Department of Homeland Security or any equivalent federal work authorization program operated by the United States Department of Homeland Security to verify information of newly hired employees, pursuant to the Immigration Reform and Control Act of 1986 (IRCA), P.L. 99-603 and in accordance with the applicability provisions and deadlines established in O.C.G.A. 13-10-91.

EEV/Basic Pilot Program User Identification Number

BY: Authorized Officer or Agent

Date

Subcontractor

Title of Authorized Officer or Agent of Subcontractor

Printed Name of Authorized Officer or Agent

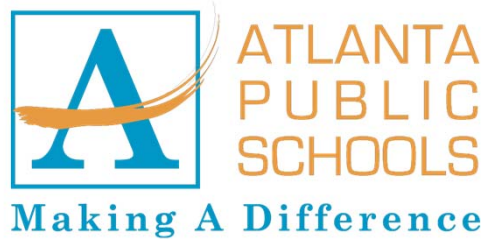
SUBSCRIBED AND SWORN

BEFORE ME ON THIS THE

____ DAY OF _____, 20__.

Notary Public

My Commission Expires: _____



Mary Lin Elementary School

586 Candler Park Drive

Phasing Plan

Site Plan

Phasing

Phase 1

Site Utilities (Storm Drainage System, Fire Line, Water Line)

Phase 2A

Construction of New 2-Story Classrooms and Support Spaces
Paving and Landscaping Improvements.

Phase 2B

Renovation of Cafeteria/Kitchen, and Classrooms

Phase 3

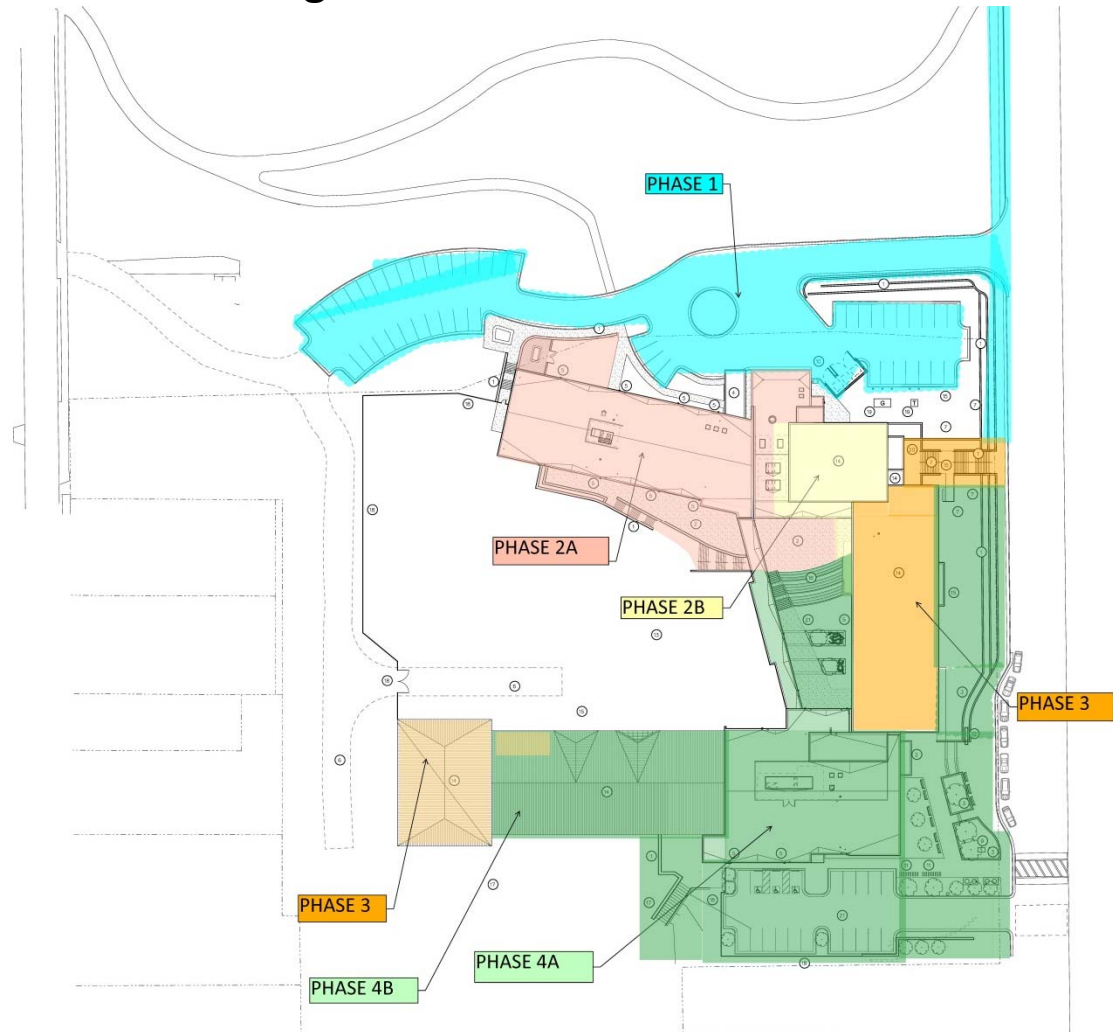
Select Renovations on Main and Upper Levels, Classrooms and
Restrooms
Gym Renovations

Phase 4A

Construction of New Administration, Media Center, and
Connecting Corridor
Site Utilities, Paving and Landscaping Improvements

Phase 4B

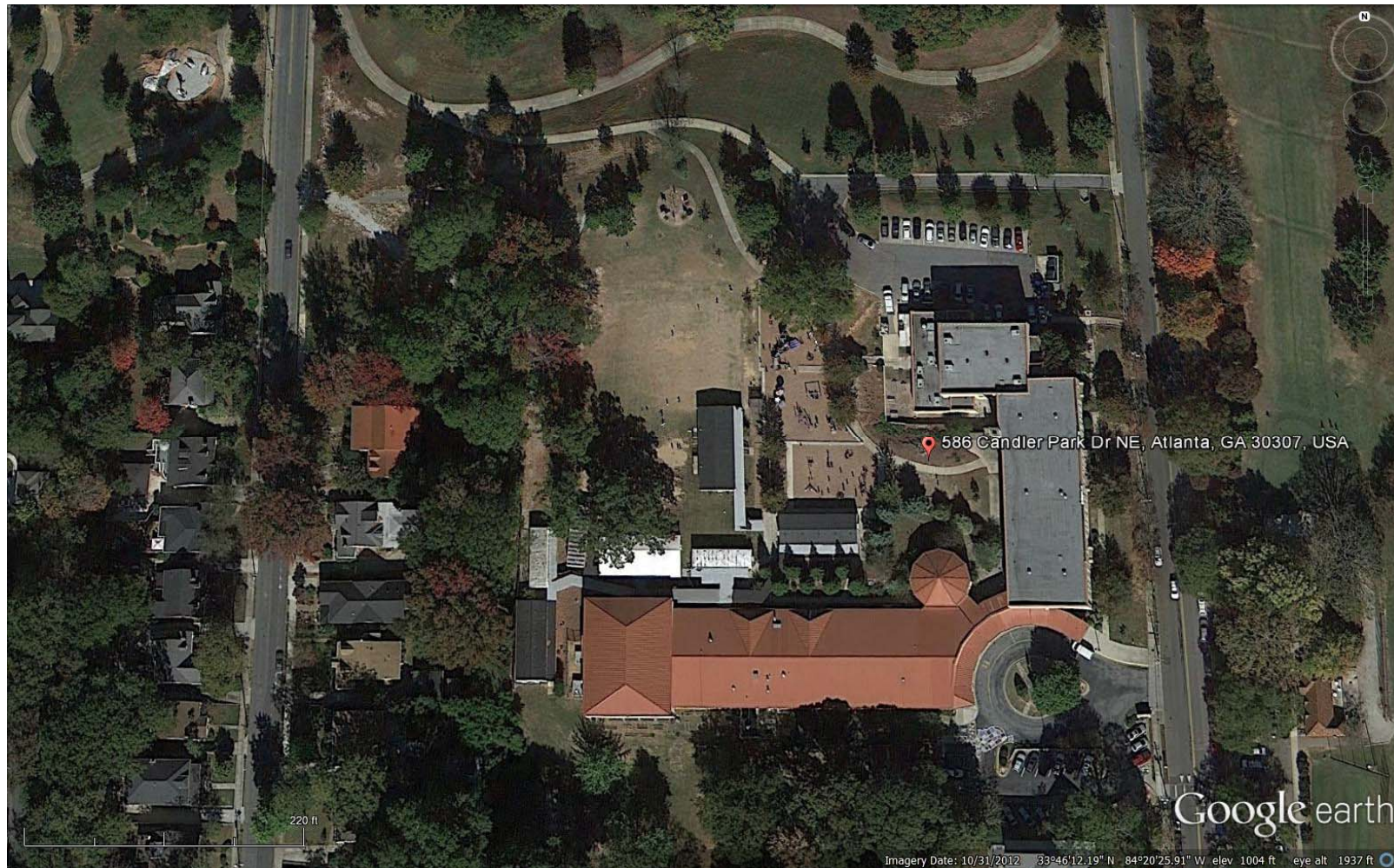
Select Renovations on the Main Level, Chorus, Band, and
Classrooms





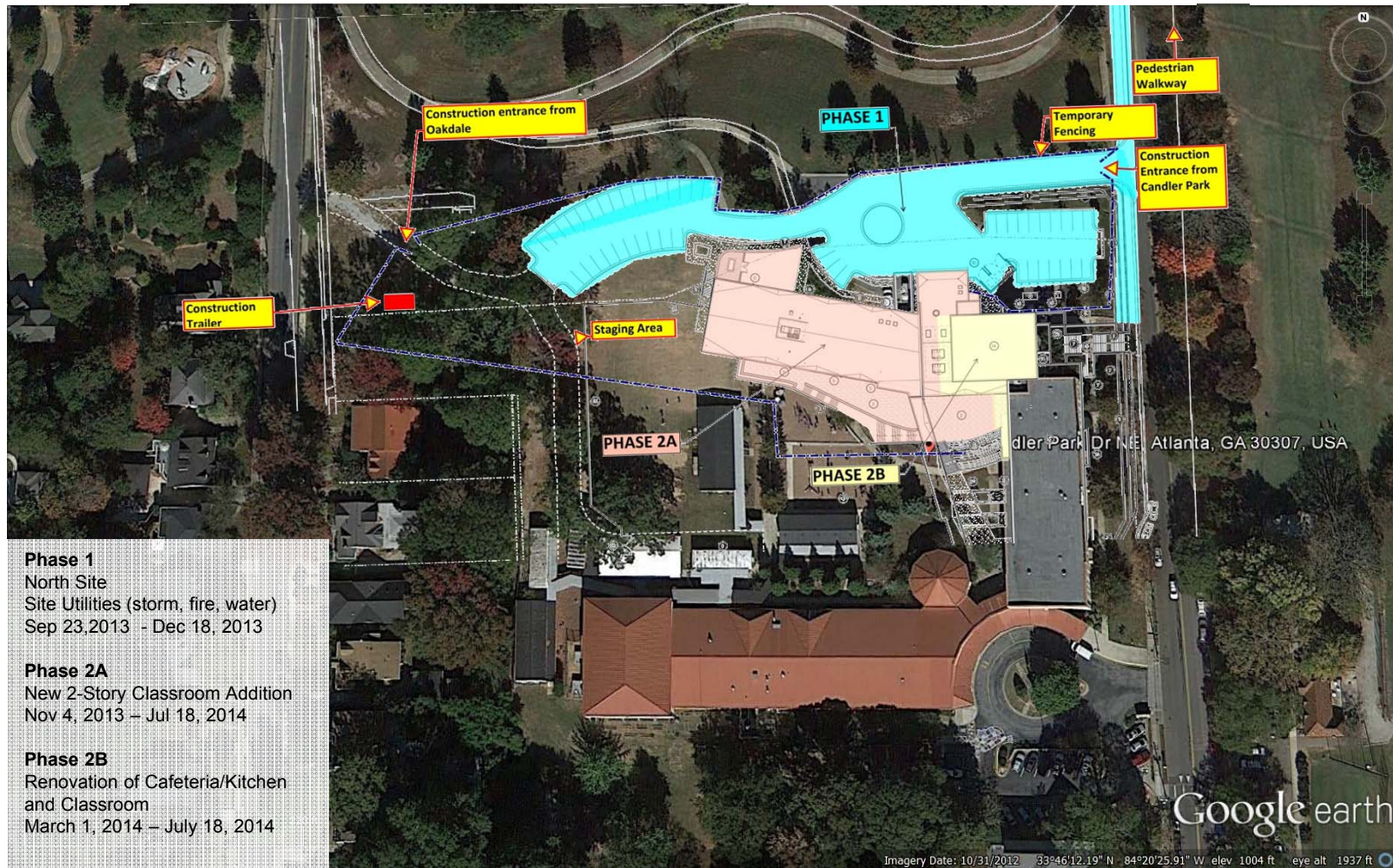
Project Location

Aerial View of Existing Site



Project Location

Aerial View with Phases 1 and 2



Project Location

Aerial View with Phases 3 and 4

