





# DOCAVE BACKUP AND RESTORE

## FOR MICROSOFT® SHAREPOINT® BACKUP & RESTORE

**Protect.** Business-aware and comprehensive protection of SharePoint Server, virtual machines (VM), SharePoint Online, and OneDrive for Business.

### KEY BENEFITS

 <p>COMPREHENSIVE BACKUP</p>	 <p>BUSINESS CONTINUITY</p>	 <p>SLA SATISFACTION</p>	 <p>CENTRALIZED MANAGEMENT</p>
<p>Protect your organization from data loss with truly comprehensive backup for your entire SharePoint environment, including all content, customizations, solutions, apps, features, and the VMs hosting your SharePoint servers.</p>	<p>Minimize business disruptions caused by service interruptions or accidental deletions with efficient recovery of all SharePoint components, databases, indexes, and configurations.</p>	<p>Satisfy even the most aggressive Service Level Agreements (SLAs) by minimizing downtime, data loss, and restore times with granular restore of select SharePoint components, including content security.</p>	<p>Track, manage, and report on all backup and restore processes through a centralized management console to monitor and enforce compliance with SharePoint SLAs.</p>

## FAST, FLEXIBLE, & INTELLIGENT DATA PROTECTION SOLUTION FOR SHAREPOINT

DocAve Backup and Restore for SharePoint provides full-fidelity backup and recovery – from individual content items to entire SharePoint environments and all of their farm-level components – maintaining all metadata, security settings, and version histories. Featuring a highly intuitive user interface, enterprise-strength scalability, and deep integration with leading hardware providers, DocAve Backup and Restore offers simple and truly comprehensive SharePoint protection.

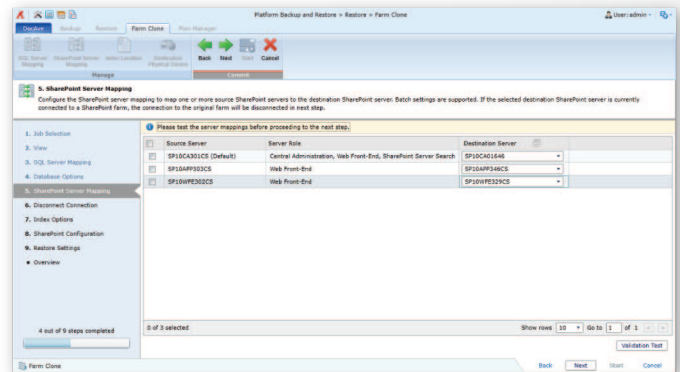
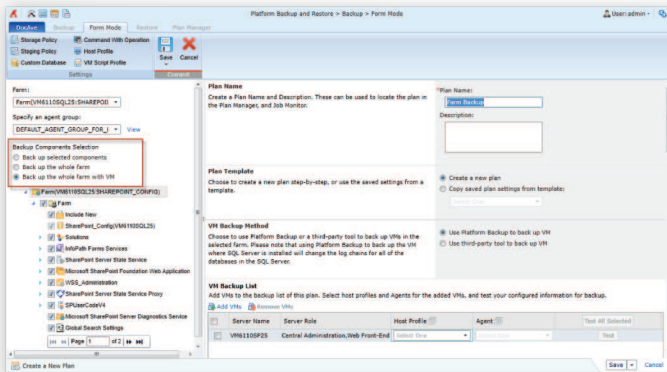
**Microsoft Partner**

Gold Application Development  
Gold Collaboration and Content

**FREE**  
30-DAY TRIAL

# TECHNICAL OVERVIEW

- Protect multiple SharePoint environments, whether hosted on premises or on cloud platforms such as Microsoft Office 365, OneDrive for Business, and VMs to centrally manage SLAs across SharePoint assets from a single interface
- Fast backup and restore of entire SharePoint farms or selective components, including back-end Microsoft SQL Server databases with all configurations, Index/Job/Search/FAST servers, front-end IIS settings, file system resources, third-party or custom application databases, BLOB stores, and entire VMs hosting your SharePoint servers, with robust VSS or VDI technology
- Full-fidelity backup and granular restore of all SharePoint content, including web applications, site collections, sites, apps, lists, libraries, workflow definitions and instances, configurations, permissions, metadata, and version histories with SharePoint API technology
- Full, incremental, and differential backup capabilities enable backup plans and schedules to focus on frequent backup of high-priority data, improving backup operations and storage efficiency
- Preview and double check backup documents before performing a document restore to ensure accuracy
- Fast, granular restore of SharePoint content and components, including databases, site collections, sites, lists, items, security, properties, service applications, solutions, as well as other custom objects through DocAve or directly through SharePoint via the End-User Granular Restore web part
- Easily recover entire SharePoint environments with the Farm Rebuild Wizard by restoring externalized BLOB data, SQL Server databases, and Index servers with step-by-step guidance, or simply restoring the SharePoint server VMs and SQL Server databases, to original SharePoint and SQL servers
- Clone source SharePoint environments with the complete data from farm, WFE servers, web application servers, and SQL Server databases to a destination environment to easily build a full-order testing-staging-production SharePoint system
- Repair one or multiple SharePoint servers within the specified farm with a one-click fix capability to reduce response times when system errors – such as failing to open the Central Administration page – occur
- Rapid restore of SharePoint content with AvePoint's InstaMount technology, enabling fast recovery of individual items to the production environment from a full database backup without first staging the database
- Backup to the most commonly-used storage platforms including Net Share, FTP, Amazon S3, AT&T Synaptic, Box, Caringo Storage, DELL DX Storage, Dropbox, EMC Atmos, EMC Centera, HDS Hitachi Content Platform, IBM Storwize Family, OneDrive, Rackspace Cloud File, TSM, and Microsoft Azure Storage to take advantage of advanced features



## Quickly create platform or granular backup plans with DocAve's easy-to-use wizard.

For a comprehensive list of new features in this release, please view our [DocAve 6 Service Pack 5 Release Notes](#).

### How to Buy DocAve

Call: 201.793.1111

E-mail: [Sales@AvePoint.com](mailto:Sales@AvePoint.com)

Evaluate DocAve for free at:  
[www.AvePoint.com/download](http://www.AvePoint.com/download)

### AvePoint Global Headquarters

3 Second Street  
Jersey City, NJ 07311  
Phone: 201.793.1111 Fax: 201.217.8709



### For US Government Organizations:

DocAve can be purchased directly from AvePoint or through the GSA website at [www.GSAadvantage.gov](http://www.GSAadvantage.gov).

See why you should choose AvePoint as a strategic SharePoint partner, visit [www.avepoint.com/about](http://www.avepoint.com/about).

Join the AvePoint community at [www.avepoint.com/community](http://www.avepoint.com/community).

Accessible content available upon request.