

**Hyperion**  
**Financial Data Quality Management for Enterprise**  
**Release 7.2.1**  
**Readme**

---

## Readme File

This file contains the following sections:

<b>Purpose</b> .....	1
<b>Restrictions</b> .....	2
<b>New Features</b> .....	2
<b>Multi-Language Support</b> .....	2
<b>Functional Changes</b> .....	6
<b>Adapters</b> .....	6
<b>Installation Updates</b> .....	7
<b>Uninstall Old Version and Install New Version</b> .....	7
<b>Update Adapter</b> .....	7
<b>Update Reports</b> .....	7
<b>Update Applications</b> .....	7
<b>Update Validation Rules</b> .....	7
<b>Known Issues</b> .....	8
<b>Defects Fixed in this Release</b> .....	9
<b>Documentation Updates</b> .....	10
<b>Security Levels</b> .....	10
<b>Copying Maps</b> .....	10
<b>Restricted Characters for Mapping</b> .....	11
<b>Map Processing Cost</b> .....	11

**Note:** Any references in the documentation to the Oracle® E-Delivery Site pertain if your site has access.

---

## Purpose

This document includes important, late-breaking information about this release of *Oracle's Hyperion® Enterprise Financial Data Quality Management Module (FDME)* Release 7.2.1. Review this information thoroughly before installing.

[Top](#)

## Restrictions

The following are restrictions of FDME:

- All components of FDME must be installed and run from one server, with the exception of RDBMS.
- FDME is limited to 100 users.
- Only three features/options are available for FDME: Enterprise Adapter, Tax Adapter, and Batch Loader:
  - Base pricing includes use of the Enterprise Adapter only.
  - The Tax Adapter and Batch Loader are available with the purchase of the FDM Adapter Suite.
- FDME applications use only SQL Server database. There is no option to use Oracle database.
- Documentation is common to FDM and FDME. Therefore, the documentation includes some references and examples that will not apply to FDME. Some of the information includes, but is not limited to, the following:
  - FDME is limited to only two dimensions (Account and Entity). Some examples may show dimensions not available in Hyperion Enterprise.
  - FDME does not include a load balance component. Load balance servers and backup servers cannot be specified. All components of FDME must be installed on one server.

[Top](#)

## New Features

### Multi-Language Support

#### Regional and Browser Settings

When logging into the FDME Web server, the language that appears within parts of the user interface (UI) depends on several settings, and may appear differently depending on language settings of the FDME database server, operating system, FDME user settings, and local computer language settings.

Table 1: UI Elements Affected by Language Settings

UI Element		Latin Based Languages		Japanese (exclusions)	
		Web	Workbench	Web	Workbench
General Content	Login Page	IE	OS		
	All other web pages	DB	NA		
	Error Log Dates	ISO	ISO		
	Error Log Content - FDME/FDME Adapter Errors	DB	DB		
	Error Log Content - VB Runtime	OS	OS		
	Error Log Content - Target System Errors	TS	TS		
	Reports (All English reports displayed, able to create language specific versions)	UD	UD		
	User (Application) Lock Message	UD	UD		
	POV Mode Lock Message	UD	UD		
	Object Maintenance - Keyed Fields	NA	NA		

UI Element	Latin Based Languages		Japanese (exclusions)		
	Web	Workbench	Web	Workbench	
Object Maintenance - Description/Tool Tips	DB/UE	NA			
Option Settings – Content	DNT/UD	DNT/UD			
Option Settings - Description & Titles	DB	DB			
User/Web Settings - Report Publish Type	DNT	NA			
User/Web Settings - Status Bar Icons, Themes	UD	NA			
Templates	UD	NA			
Task flows – Task flows must be configured for each language	UD	NA			
Table Editor – Table Names & Field Names	DNT	DNT			
Dimension Key Names	DNT	DNT			
Dimension Alias	UD	UD			
User Defined Metadata names	UD	UD			
Target System Lists (member lists)	TSD	TSD			
Adapter Names	DNT	DNT			
Import Format Expression Keys (Types)	DNT	NA			
Validation Report Format Code Keys	DNT	NA			
Scripts - VB Code inside scripts	DNT	DNT			
Workbench Load Balance Server Groups	NA	OS			
Acronyms and Abbreviations	Location Risk Level/Question Risk Level	DB	NA	DNT	NA
	Control Question Attributes (Types, Risk Freq)	DB	NA	DNT	NA
	Currency Code Acronyms	DNT	NA	DNT	NA
	Memo, Red Flag, & Audit Memo Column Headings (I, G, E)	DB	NA	DNT	NA
	Activity Log types - OK/Err	DNT	DNT	DNT	DNT
Control Limitations	Browse buttons	OS	OS		
	OK/Cancel (from Message Boxes)	OS	OS		
	OS Common Dialogs (File Browse, etc)	OS	OS		
	FDME Object Browser – Titles	DNT	OS		
	FDME Object Browser – Content (API based)	DNT	DNT		
	Active Reports Designer	NA	DNT		
	Active Reports Viewer	NA	DNT		
Utilities	Config Utilities, Installer	NA	DNT		
	Task Manager	NA	OS		
	Schema Updater	NA	DB		

**Key:** **IE**-Internet Explorer; **OS**-Operating system; **DB**-User setting stored in FDME database; **NA**-Not applicable; **ISO**-International Standard Format; **UD**-User defined (global). Translation is customer-driven, one description for all languages; **UE**-User editable; **DNT**-Does not translate; **TS**-Based on language of target system installed; **TSD**-Target system dependant. List provided by other Hyperion product (not FDME)

## Changing Preferences

> To change the language settings in FDME:

1. Log on to the FDME Web client.
2. Select **Tools > User Settings**.  
The User Settings screen is displayed.
3. From **Language**, select the language for FDME to display.
4. Click **Save**.

## Decimal Replace on Database Setup

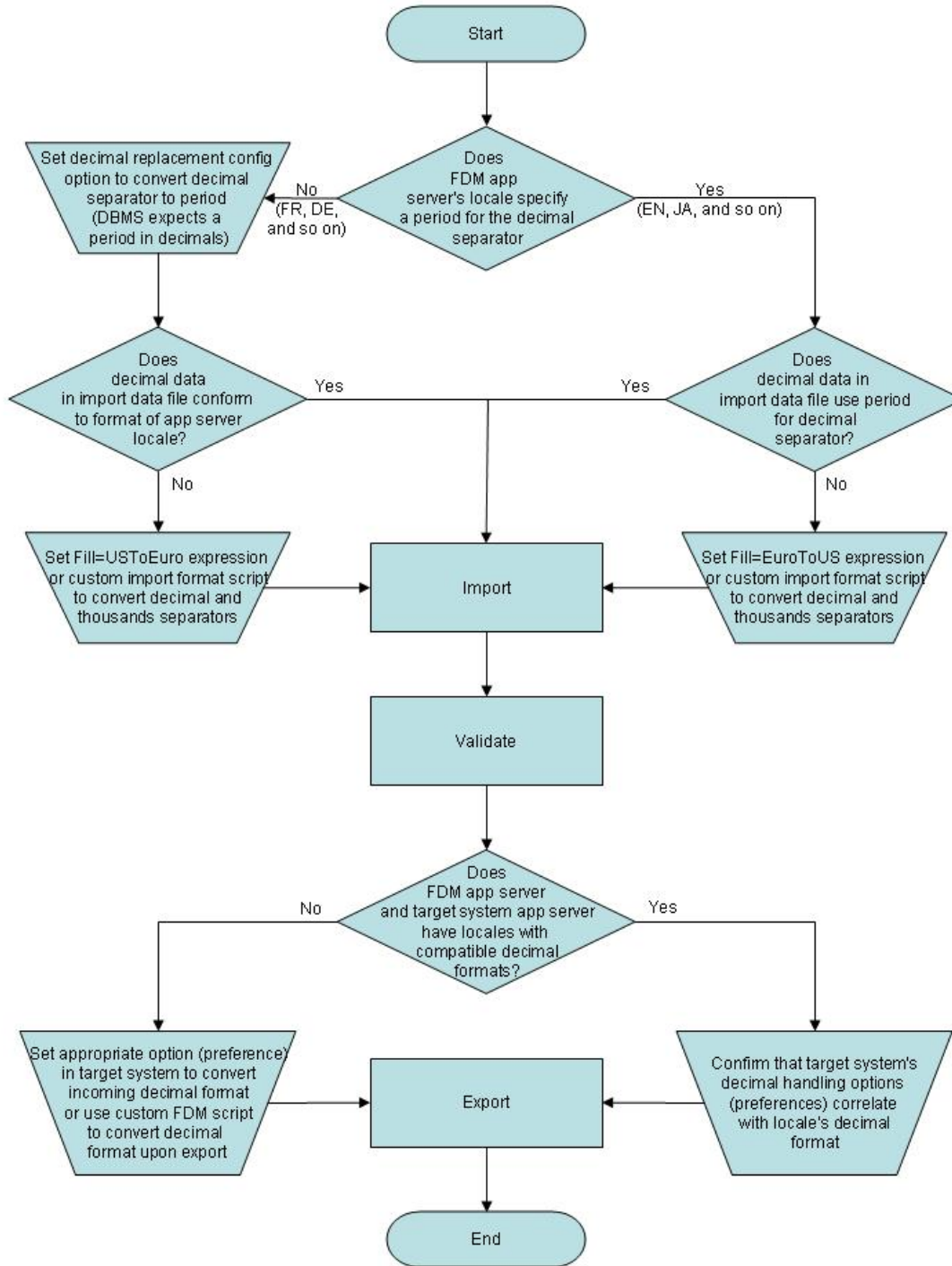
Because FDME supports language localization and regional date, time, and number formats, you must ensure that decimal formatted-related options are set. Two precepts govern decimal handling in FDME:

1. The selected locale for standards and formats on the FDME application servers determines which characters are designated as the thousands and decimal separators. This impacts decimal-formatted data in imported data files, as well as the default decimal format used to create export files and to load target systems. Locale setting is accessed from Regional and Language Options in the Windows Control Panel.
2. The DBMS that serves as the FDME repository always requires that decimal data be formatted without a thousands separator and the decimal separators are periods.

The implications of precept # 1 are that you must take additional steps when the application server decimal format differs from the import data file decimal format (or from the format expected by the target system).

For example, if an import file with English-formatted decimals is imported into FDME running on a French-locale application server, you must use an import script or the Fill= UsToEuro expression to convert the decimals to the French format (decimal separator is a comma). Also, to export from the French-locale application server and load a target system that expects English-formatted decimals, either the target system must implement its own conversion mechanism, or an FDME script must be used to perform the output conversion prior to sending it to the target system.

The implications of precept # 2 are that whenever the FDME application server decimal format specifies any character other than a period as the decimal separator, you must set the decimal replacement option (found in FDME under Administration→Configuration Options) to ensure that the comma, or other character, is converted to a period prior to data loading.



### Date Formatting on Mid-Tier Items

Dates for mid-tier items are represented in ISO format (yyyy-mm-dd). Examples of mid-tier items include error logs and processing logs.

### Schema Updater Logs

Any time that a schema update is run, FDME writes to the Schema Updater log. This log is intended to help Hyperion technical support personnel for troubleshooting purposes. Therefore, this log is always compiled in English, regardless of the local OS version, OS regional settings, or FDME language settings.

## Functional Changes

### Drillback from Financial Management

Users of Oracle's Hyperion<sup>®</sup> Financial Management – System 9 (Financial Management) can drill back to FDME to view the source used to load a Financial Management intersection. When viewing data in Financial Management, right-click on an amount and select Audit Intersection.

### Adapter by Location and Control Table by Adapter

FDME Release 7.2.0 and higher includes *Adapter by Location*, and *Control Table by Adapter* functionality. It is no longer necessary to create a separate FDME application for each different target system used. Multiple adapters can be imported and each location in the application can use any of the adapters.

In addition, the same adapter can be imported multiple times to load data to different applications created with the same target program (two different Financial Management applications, for example). Traditionally, only one set of control tables could be created in the FDME application. Because you can now load to different target systems, you can create a set of control tables for each adapter.

### Functions moved from Workbench to Web Client

Metadata functions are now only accessible from the Web client UI. Metadata can no longer be manipulated using the Workbench (Win32 client).

The Validation Rule Editor, formerly only available in Workbench, is now exclusively a feature in the FDME Web client.

### Functions Added to Web Client

The Map Converter function is now a feature of the Web client.

Location names can now be changed in the Web client.

### Reports

All standard reports (Crystal or Active) that were available in previous releases of FDME and UpStream WebLink are available for FDME 7.2.1 as Active Reports. FDME 7.2.1 does not support Crystal Reports. You can customize Active reports from within Workbench.

## Adapters

### Intercompany

The FDME Adapter for Financial Management is bundled with the FDME Financial Management Intercompany adapter. This supports the loading of intercompany-detailed transactions to the Financial Management Intercompany Transaction Module and can import, map, and load intercompany transactions at the invoice level.

### Tax Extract

The FDME Adapter for Tax provides a simple, yet powerful, interface for extracting FDME factual data to user-defined, formatted text files that are accessible to external applications and data warehouses. A data extract consists of extract options, filters, and selected FDME fields to export. User-defined extract profiles can be executed by a FDME script, a third-party application, or executed automatically by using the FDME Task Manager.

## Installation Updates

This release is a platform upgrade from previous versions (UpStream WebLink 7.x and Financial Data Quality Management for Enterprise 7.0.2, 7.2.0, and 7.1). FDME release 7.2.1 requires a full install.

1. Uninstall old version of UpStream WebLink or FDME.
2. Install new version of FDME.
3. Update the FDME integration adapter.
4. Update the FDME reports.
5. Update current applications to FDME release 7.2.1.
6. Update the Validation Rules.

## Uninstall Old Version and Install New Version

See the *Installation Guide* for detailed procedures on uninstalling the old version of UpStream WebLink or FDME and installing release 7.2.1.

## Update Adapter

The Hyperion Enterprise adapter is automatically updated during the FDME 7.2.1 installation.

Steps for updating the adapters are included in the *Installation Guide*.

## Update Reports

Steps for updating the reports are included in the *Installation Guide*.

## Update Applications

Use the FDME Schema update utility to update the database to the current schema level. To run the FDME Schema Update utility, from the Windows Start Menu, select Programs > Hyperion > Financial Data Quality Management > Workbench > Schema Update.

If you currently run WebLink versions 5.x, 6.x, or 7.x, the schema update utility will not update existing applications to FDME. If you are updating from one of these older versions, contact a Hyperion Technical Support or your Hyperion implementation consultant for assistance.

## Update Validation Rules

Any FDME applications that use an account in the Display Value as the method for retrieving the account value from the target system must be updated. These validation rules must have a multi-dimensional retrieve created in the Rule Logic field to pull values. This must be done for applications being upgraded from UpStream WebLink Release 8.0.5 7.0.2 and prior.

1. From Workbench, launch on to the FDME application.
2. Select **Metadata > Validation Rules**.
3. Browse through all validation rules to find any validation rule that uses an account value in the **Display Value** and does not have a logic rule attached (displayed in the Rule Logic column).
4. Copy the account from the **Display Value** field to the **Logic Rule** field and place pipes || (|account| for example) around the account.

[Top](#)

## Known Issues

### Non-English Operating Systems

- FDME release 7.2.1 is not double-byte compliant.
- FDME 7.2.1 is only supported for use on English, German, and French Windows operating systems.

### Internet Explorer Security Update

Internet Explorer may crash when Microsoft Security Update KB18899 has been installed on the user's PC. The patch to fix the security update is available from Microsoft.

**Note:** For information about a specific issue, contact Hyperion Technical Support.

### Multi-Load in Local Mode

Use only Global mode when importing Multiload files. Do not use Local mode.

### Pre-7.2.1 XML Files

XML files exported from FDME 7.2.0 or earlier cannot be imported into FDME 7.2.1.

### Required Conditional Map when Using Oracle RAC

This section supplements Chapter 10 "Mapping Tables" in the *Administrator's Guide*.

When using Oracle RAC, *Between* map rules that include non-numeric characters in the rule definition must use conditional mapping.

The following example shows that rule w2426 contains "2426,2435-2812" in the rule definition field. The hyphen is non-numeric, therefore, this rule is made conditional by entering #script in the Target Account field and result="<target account>" in the Script field.

Rule Name	Rule Desc	Rule Definition	Target Account	Script
w1503	Range	1503,1591	ShortTermRec	
w2426	Range	2426,2435-2812	#SCRIPT	Result = "CASH"
w2760	Range	2760,2767	LongTermPayInterco	
w4320	Range	4320,4325	PayrollTax	
w4340	Range	4340,4400	payrollTax	
w4440	Range	4440,4449--999	Advertising	
w4450	Range	4450,4455	Legal	
w4460	Range	4460,4470--999	PatentAmort	
w4480	Range	4480,4483--999	Legal	
w4484	Range	4484,4499--999	Salaries	
w4510	Range	4510,4590--999	Legal	
w4619	Range	4619,4699--999	Legal	
w4901	Range	4901,4906--999	Legal	



If you are upgrading from an older version of FDME, or have recently enabled RAC in Oracle and are using existing maps, then you must update any “Between” mapping rules that contain non-numeric characters in the rule definition.

In this example, rules w4440, and w4460 through w4901 must be updated to be conditional mappings.

### **Oracle OLDB Provider**

If you are using Oracle, you must use 9.0.2.7 Oracle OLDB provider.

### **Financial Controls when using Oracle 10g**

If you are using the Financial Controls (Process Explorer) functionality, Oracle 10g, and if any questions in your Financial Controls table will exceed 1000 characters, contact Hyperion Technical Support to download and install the `Hyperion_S9_FDME_9_2_0_01.xml` service fix.

### **Import Format Strings when using Oracle**

Hard-coded strings in import formats are not converted to upper case upon the Import function. Hard coded strings in import formats must be entered in upper case.

[Top](#)

---

## Defects Fixed in this Release

### **Application Fixes 7.2.1**

- The Active Report *ImportProcessAnalysis* now works as intended.
- FDME Oracle’s Hyperion® Financial Data Quality Management no longer generates an error when displaying more than 100 locations on the user maintenance screen.
- Export Only batch function now functions correctly.
- Workbench no longer crashes when the Application Explorer is turned off and the user selects Adapter, Script, or Report.
- The current script is no longer overwritten if you click on another script without saving it.
- Drill up from HFM now works with custom HFM periods.
- Fixed defect where the port number was overwritten when toggling between normal and secure LDAP.
- Extraneous web dialog no longer opening from "Show Message" code in AftCheck event script.
- Fixed error where users could run the schema updater on applications to which they do not have access.
- Fixed defect that ran the Val Report when EnableVal integration option is turned off and a location has ValRule assigned.
- Fixed defect that wouldn’t allow Oracle 10g to update if a certification question is created with more than 1000 characters.
- Bulk Insert in SQL 2005 now truncates journal IDs longer than eight characters instead of failing to import.

### **Adapter Fixes 7.2.1**

- No bugs reported.

### **Application Fixes 7.2.0**

- The Copy Adapter function now works as intended when using FDME with Oracle.

- Fixed defect that did not allow the Copy Map dialog to load if user did not have access to all locations.
- Fixed defect that users were unable to submit certifications if the changes were made to the control groups after certifications had been answered.
- Space character is now a valid delimiter when setting up an Import Format on the Web.
- Fixed defect that didn't allow user to view stored documents when more than one IE window was open.
- The Object Security Level drop-down displays updated security settings instead of old security settings when tab is clicked prior to updating grid.
- Users can now add a conditional map script in Oracle that exceeds 2000 characters.
- Fixed defect that caused multi-load batch files to fail when four or more load flags were set.
- Fixed defect that stopped the zero suppress /batch/multi-load from processing correctly.
- Multi-load processing log is now accessible from the Input screen.
- Fixed error that caused a lockup during processing when the user submits two consecutive locations from the Process Explorer screen.
- When adding a lookup map, the lookup dimension now has Source and Target fields enabled.
- Deleting a script in the Workbench with another window open no longer generates an error.

### **Adapter Fixes 7.2.0**

- Oracle's Hyperion<sup>®</sup> Financial Data Quality Management no longer generates an error when importing the adapter for Oracle's Hyperion<sup>®</sup> Financial Management – System 9 Intercompany XML adapter to an Oracle application.
- Fixed an error that caused Oracle's Hyperion<sup>®</sup> Essbase – System 9 (formerly Analytic Services) adapter to return only base members for member lists.
- No fixes required.

[Top](#)

---

## **Documentation Updates**

### **Security Levels**

Step 4 of the section titled "Assigning Application Object Security," starting on Page 49 of the *Administrator's Guide* states that the initial security levels for users and objects are set to All, which equals the value of 99.

Correction: The initial security levels for both users and objects are set to All Intermediate, which is equal to the value of 399.

### **Copying Maps**

Copy maps only from parent locations. Maps contained within child locations will not copy.

## Restricted Characters for Mapping

Using the following characters in source or target mapping is not allowed and may cause mapping problems:

- Ampersand (&)
- Asterisk (\*)
- Question Mark (?)
- Greater Than (>)
- Less Than (<)
- Apostrophe (')
- Quote (“)

## Map Processing Cost

When creating mappings, refer to the following table for information regarding processing cost. Using the most appropriate mapping rules can significantly reduce processing time when importing large files.

Rule Type	Processing Cost	Process Cost Explanation	Tips
Map Explicit	Low	Simple update pass-through to the database.	
Map Range	Low	Simple update pass-through to the database.	
Map Range (Conditional)	Very High	Conditional mapping process returns recordsets with all dimension fields to the application server; results in high amount of data transfer and memory utilization.	Restrict conditional ranges. Rather than using one large range (0000 to 9999), divide the range into multiple, smaller rule blocks (0000 to 1000, 1001 to 2000, for example); optimizes memory utilization.
Map In	Low	Simple update pass-through to the database.	
Map In (Conditional)	Very High	Conditional mapping process returns recordsets with all dimension fields to the application server; results in high amount of data transfer and memory utilization.	Restrict IN lists. Rather than using one large list, divide the list into multiple, smaller lists; optimizes memory utilization.
Map Like (One Sided *)	Low	Simple update pass-through to the database.	
Map Like (One Sided ?)	Low / Medium	Simple update pass-through to the database, but masking queries use tables scans that, with large record volumes, can impact performance.	Minimize the number of place holders (?) in statements; reduces time for database engine to process masks.

Map Like (Two Sided - Source values used to derive Target Values)	High	Target value derivation process returns recordsets with the specified dimension's fields to the app server; results in high amount of data transfer and memory utilization.	Restrict Like criteria. Don't use a * without other criteria in the rule definition, which causes a large volume of records to be written to the app server. Use criteria such as 1*, 2*, 3* or A*, B*, C*, for example, to limit each query to a subset of what you need to map; optimizes memory utilization.
Map Like (Conditional)	Very High	Conditional mapping process returns recordsets with all dimension fields to the app server; results in high amount of data transfer and memory utilization.	Restrict Like criteria. Don't use a * without other criteria in the rule definition, which causes a large volume of records to be written to the app server. Use criteria such as 1*, 2*, 3* or A*, B*, C*, for example, to limit each query to a subset of what you need to map; optimizes memory utilization.
Map Like (* to *)	Low	Simple update pass-through to the database. This rule type is optimized by FDME and processes quickly.	
Logic (In)	Very High	Conditional mapping process returns recordsets with all dimension fields to the app server; results in high amount of data transfer and memory utilization.	
Logic (Between)	Very High	Conditional mapping process returns recordsets with all dimension fields to the app server; results in high amount of data transfer and memory utilization.	
Logic (Like)	Very High	Conditional mapping process returns recordsets with all dimension fields to the app server; results in high amount of data transfer and memory utilization.	

See the section titled “Multiple Adapters” in Chapter 10 of the *Installation Guide*, and Chapter 7- “Control Tables” of the *Administrator's Guide* for information regarding the Control Table by Adapter and Adapter by Location functionality.

See the section titled “Drill-Back from Financial Management” in Chapter 14 of the *Administrator's Guide* for information regarding the drill-back functionality.

Financial controls setup and configurations are now performed in the Web client instead of Workbench. Chapter 12 of the Administrator's Guide details financial controls setup and configuration in the Web client.

Validation rules and validation entity setup and configurations are now performed in the Web client instead of Workbench. Chapter 13 of the Administrator's Guide details validation rules and entity setup and configuration in the Web client.

## Hyperion Financial Data Quality Management for Enterprise 7.2.1 Readme

Information about the Intercompany adapter is included in the Financial Management adapter .zip file available on the Oracle E-Delivery site.

Information about the Tax Extract adapter is included in the Tax Extract adapter .zip file available on the Oracle E-Delivery site.

### **Note:**

Financial Data Quality Management documentation is common to FDM release 9.3 and FDME release 7.2. Therefore, the documentation includes some references and examples that will not apply to FDME.

[Top](#)

---



Copyright © 2007, 2008 Oracle and / or its affiliates. All rights reserved.  
<http://www.oracle.com>