

United States Department of the Interior
National Park Service

National Register of Historic Places
Registration Form

1. Name of Property

historic name Carver, George Washington, School

other names/site number North School

2. Location

street & number 909 Westminster [n/a] not for publication

city or town Fulton [n/a] vicinity

state Missouri code MO county Callaway code 027 zip code 65251

3. State/Federal Agency Certification

As the designated authority under the National Historic Preservation Act, as amended, I hereby certify that this [XX] nomination [] request for determination of eligibility meets the documentation standards for registering properties in the National Register of Historic Places and meets the procedural and professional requirements set forth in 36 CFR Part 60. In my opinion, the property [XX] meets [] does not meet the National Register criteria. I recommend that this property be considered significant [] nationally [] statewide [XX] locally.
(See continuation sheet for additional comments [])

Claire F. Blackwell
Signature of certifying official/Title Claire F. Blackwell/Deputy SHPO

18 October 1996
Date

Missouri Department of Natural Resources
State or Federal agency and bureau

In my opinion, the property [] meets [] does not meet the National Register criteria.
(See continuation sheet for additional comments [])

Signature of certifying official/Title

State or Federal agency and bureau

4. National Park Service Certification

I hereby certify that the property is:

Signature of the Keeper

Date

- [] entered in the National Register
See continuation sheet [].
- [] determined eligible for the
National Register
See continuation sheet [].
- [] determined not eligible for the
National Register.
- [] removed from the
National Register
- [] other, explain
See continuation sheet [].

5 Classification

Ownership of Property	Category of Property	Number of Resources within Property		
		Contributing	Noncontributing	
<input checked="" type="checkbox"/> private	<input checked="" type="checkbox"/> building(s)	1	0	buildings
<input type="checkbox"/> public-local	<input type="checkbox"/> district	0	0	sites
<input type="checkbox"/> public-State	<input type="checkbox"/> site	0	0	structures
<input type="checkbox"/> public-Federal	<input type="checkbox"/> structure	0	0	objects
	<input type="checkbox"/> object	1	0	Total

Name of related multiple property listing.

N/A

Number of contributing resources previously listed in the National Register.

N/A

6 Function or Use

Historic Function

EDUCATION/School

Current Functions

RECREATION AND CULTURE/museum
 SOCIAL/Civic

7 Description

Architectural Classification

No Style

Materials

foundation concrete
 walls brick

 roof
 other wood
 concrete

Narrative Description

(Describe the historic and current condition of the property on one or more continuation sheets.)

8. Statement of Significance

Applicable National Register Criteria

A Property is associated with events that have made a significant contribution to the broad patterns of our history

B Property is associated with the lives of persons significant in our past.

C Property embodies the distinctive characteristics of a type, period, or method of construction or represents the work of a master, or possesses high artistic values, or represents a significant and distinguishable entity whose components lack individual distinction.

D Property has yielded, or is likely to yield, information important in prehistory or history.

Criteria Considerations

Property is:

A owned by a religious institution or used for religious purposes.

B removed from its original location.

C a birthplace or grave.

D a cemetery.

E a reconstructed building, object, or structure.

F a commemorative property.

G less than 50 years of age or achieved significance within the past 50 years.

Areas of Significance

ETHNIC HERITAGE - Black

EDUCATION

Periods of Significance

1937 - 1968

Significant Dates

1937

Significant Person(s)

N/A

Cultural Affiliation

N/A

Architect/Builder

Felt, Dunham & Kriehn

Narrative Statement of Significance

(Explain the significance of the property on one or more continuation sheets.)

9. Major Bibliographic References

Bibliography

(Cite the books, articles and other sources used in preparing this form on one or more continuation sheets.)

Previous documentation on file (NPS):

- preliminary determination of individual listing (36 CFR 67) has been requested
- previously listed in the National Register
- previously determined eligible by the National Register
- designated a National Historic Landmark
- recorded by Historic American Buildings Survey
- # _____
- recorded by Historic American Engineering Record
- # _____

Primary location of additional data:

- State Historic Preservation Office
- Other State Agency
- Federal Agency
- Local Government
- University
- Other:

Name of repository: _____

10 Geographical Data

Acreage of Property 1.7 acres

UTM References

A. Zone	Easting	Northing	B. Zone	Easting	Northing
15	590830	4300890			
C. Zone	Easting	Northing	D. Zone	Easting	Northing

[] See continuation sheet

Verbal Boundary Description

(Describe the boundaries of the property on a continuation sheet.)

Boundary Justification

(Explain why the boundaries were selected on a continuation sheet.)

11 Form Prepared By

name/title see continuation sheet
organization _____ date _____
street & number _____ telephone _____
city or town _____ state _____ zip code _____

Additional Documentation

Submit the following items with the completed form:

Continuation Sheets

Maps

- A USGS map (7.5 or 15 minute series) indicating the property's location.
- A Sketch map for historic districts and properties having large acreage or numerous resources.

Photographs

Representative black and white photographs of the property.

Additional Items

(Check with the SHPO or FPO for any additional items)

Property Owner

(Complete this item at the request of SHPO or FPO.)

name Carver Memorial Board (c/o Steve Moore)
street & number 909 Westminster telephone (573) 642-5801
city or town Fulton state Missouri zip code 65251

United States Department of the Interior
National Park Service

**NATIONAL REGISTER OF HISTORIC PLACES
CONTINUATION SHEET**

Section 7 Page 1

George Washington Carver School
Callaway County, MO

SUMMARY: Constructed in 1937, the George Washington Carver School, 909 Westminster, Fulton, Callaway County, is a two-story brick building with a partial basement housing a boiler room and shop. It is T-shaped, with an asymmetrical facade. A kitchen was added adjacent to the auditorium around 1950; other than that, the original building has not been changed, and most of the original interior details remain intact.

ELABORATION: Completed in 1937 at roughly the same site as the former North School, the George Washington Carver School faces west to Westminster Avenue and is bounded by Carver Drive on the south, Poston Avenue on the east, and residential properties on the north. The school is a two-story brick building, T-shaped, with an asymmetrical facade, or west elevation. The main entrance door is emphasized by a large triple-hung mullioned window above, with 9/9/12 lights, and a concrete sign with the school's new name: George Washington Carver School. On either side of the entrance are two two-story projecting piers, finished with concrete caps carved with garlands. Three large expanses of windows on each floor -- five double-hung windows (9/12) in each bay -- allow ample natural light into the classrooms. A similar entrance of two-story piers capped with concrete caps with garlands appears on the south elevation also. The sign on that side still reads "North School".

The north elevation has been modified the most, with the kitchen addition entering directly into the auditorium. Also, the auditorium windows on that side have been boarded up. The east elevation is windowless at the auditorium wing. The portion of this elevation which contains the classroom windows is in much need of paint for the wood window trim. (See reduced scale Drawings, continuation sheets.) Doors and windows all appear to be original.

The partial basement houses the still functioning, original boiler and fuel room, plus a "Manual Training" classroom. The first floor provides spaces for four classrooms, a library and auditorium/gymnasium, and the second floor provides four additional classrooms. The toilet rooms retain their original fixtures and partitions. The classrooms, auditorium and stage are of the original wood flooring. The halls still have the original light fixtures, though the glass shades are missing from many. Most classrooms have been updated with strip florescent lighting. Some ceilings are the original plaster, others have had acoustical tiles added. The original concrete steps, iron railings, interior doors, and unique door closing hardware on toilet rooms have been left intact. Even the chalkboards with "poster boards" above still remain, as detailed on the original drawings (Felt, Dunham and Kriehn, 1936). Lockers were placed in the second floor hall at some later date.

The new school for Fulton's black children cost \$40,000 to build (Hamlin, 1984, p. 84). "In addition to the new building, furnishings were installed, such as new chairs at a cost of \$950 and desks for \$274 . . . The next spring the playground of Carver was enlarged by purchasing two adjacent lots" (Hamlin, 1984, p. 82). Most of the original furniture was moved to Center School or was sold as surplus property when Carver School closed in 1982.

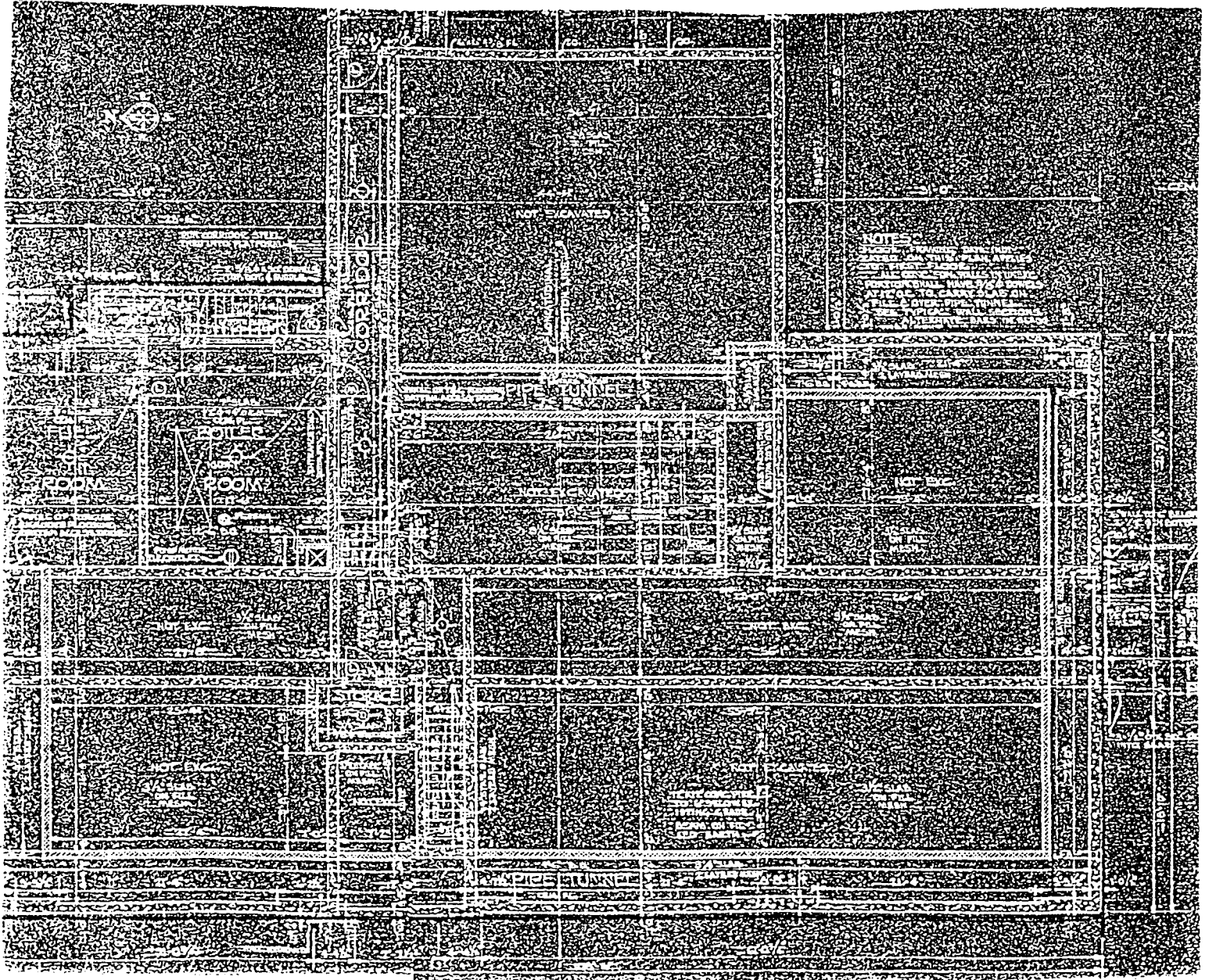
Damage and vandalism have been minimal, and for the most part, the building looks much as it must have in 1937 when it opened.

United States Department of the Interior
National Park Service

NATIONAL REGISTER OF HISTORIC PLACES
CONTINUATION SHEET

Section 7 Page 2

George Washington Carver School
Callaway County, MO



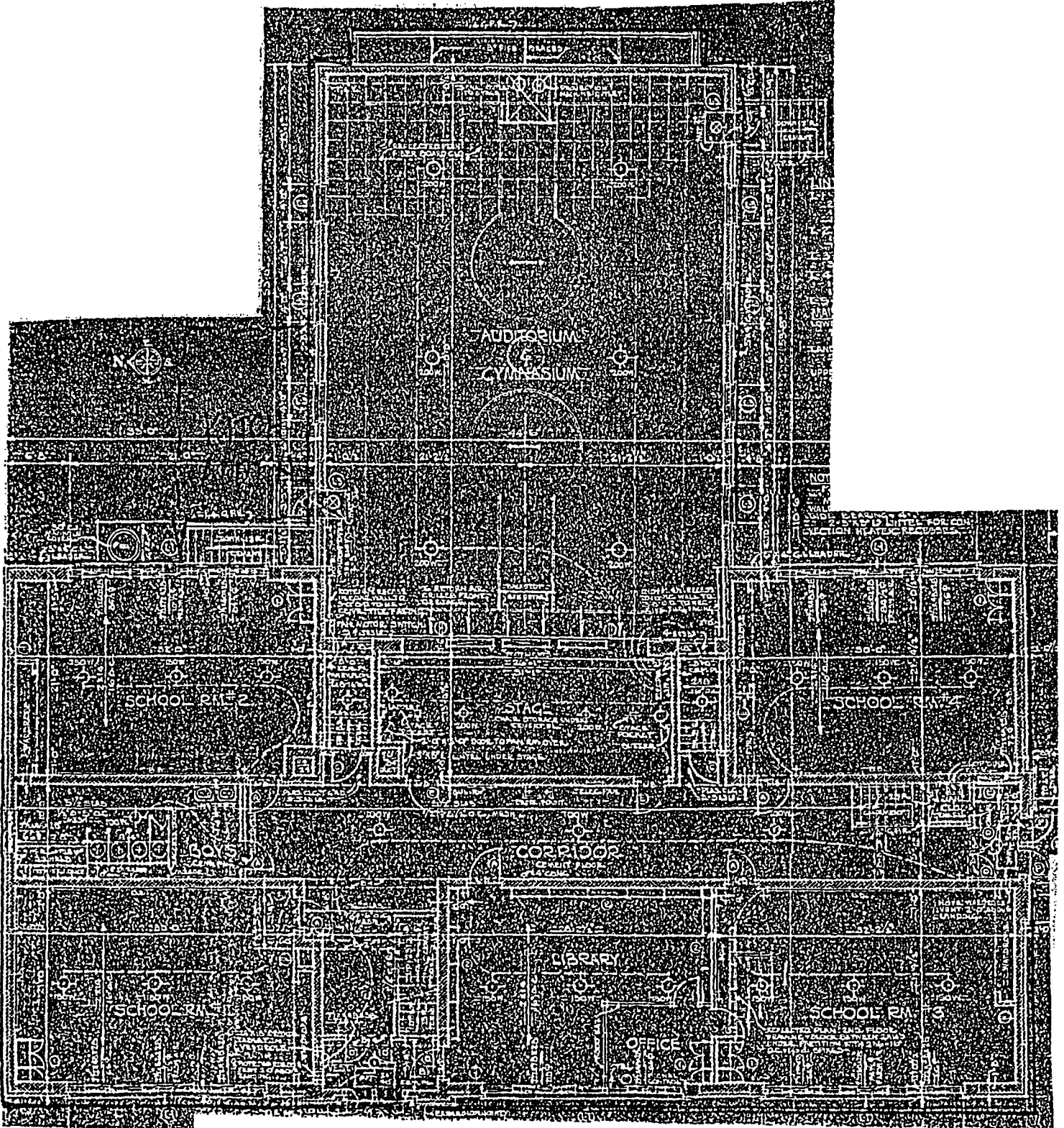
BASEMENT

United States Department of the Interior
National Park Service

NATIONAL REGISTER OF HISTORIC PLACES
CONTINUATION SHEET

Section 7 Page 3

George Washington Carver School
Callaway County, MO

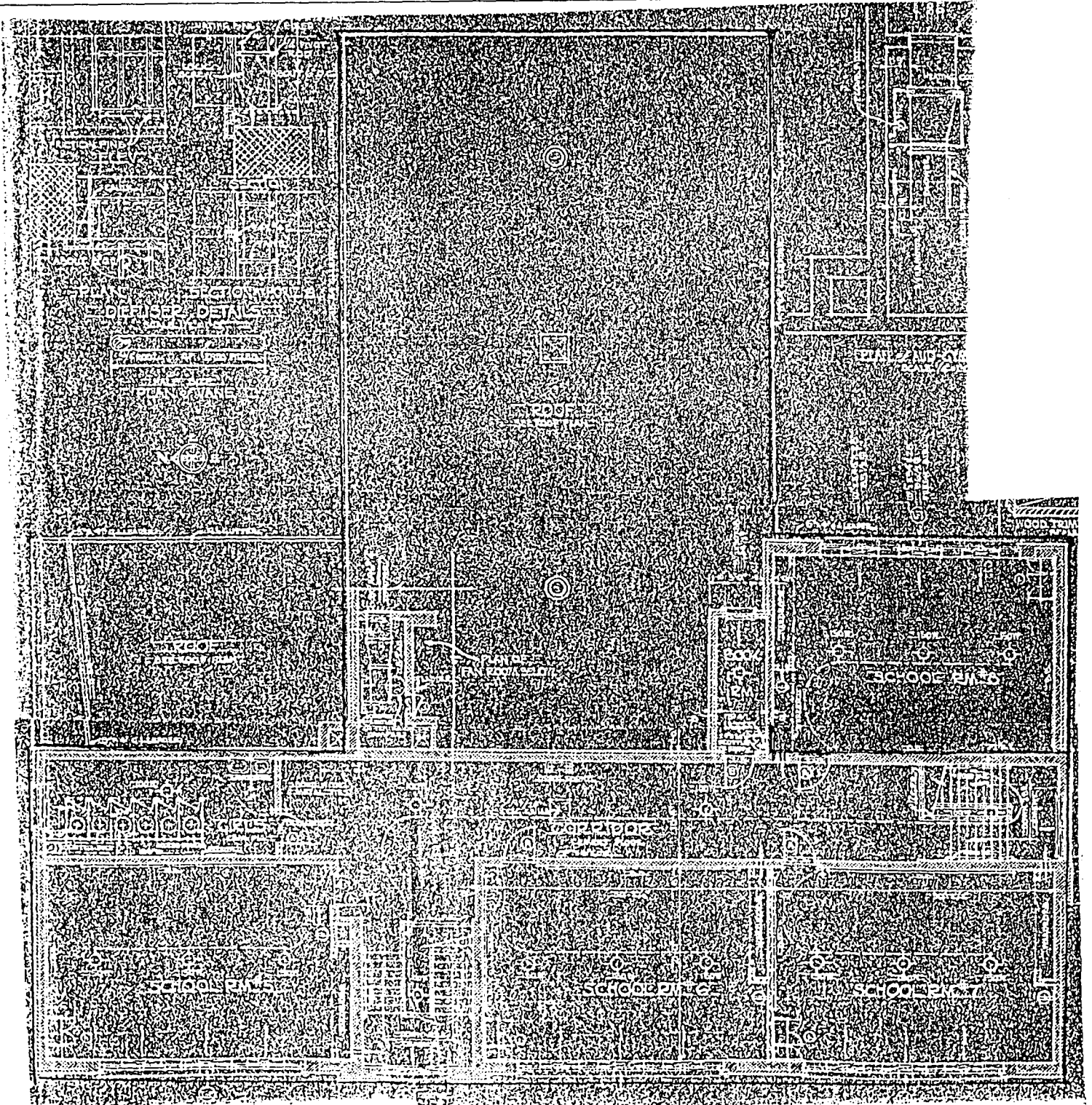


United States Department of the Interior
National Park Service

NATIONAL REGISTER OF HISTORIC PLACES
CONTINUATION SHEET

Section 7 Page 4

George Washington Carver School
Callaway County, MO



SECOND FLOOR

United States Department of the Interior
National Park Service

**NATIONAL REGISTER OF HISTORIC PLACES
CONTINUATION SHEET**

Section 8 Page 5

George Washington Carver School
Callaway County, MO

Summary: George Washington Carver School, 909 Westminster Avenue, Fulton, Callaway County, is significant under Criterion A in the areas of education and ethnic heritage--black. Constructed in 1937, for thirty-one years the building housed Fulton's only African American school, named for and dedicated on November 12, 1937, by African American scientist George Washington Carver. The Carver School was constructed to replace the North School, built in 1882 also as an African American school and which, by 1937, could no longer accommodate the black student population. The Carver School remained the only school for African Americans until 1968, when Fulton finally and belatedly integrated its schools. At that time, Carver School became the school for all sixth grade children, black and white. The school was closed in 1982 and used for storage until the Fulton community formed the George Washington Carver Memorial Corporation in 1989, turning the first floor of the old schoolhouse into a black history museum. Current plans call for the second floor of the building to be used by the Fulton Family Resource Center, a community service organization. Since 1937, the George Washington Carver School has been a focal point for the African American community of Fulton. Although the period of significance extends beyond the fifty year limit, the significance of the building was established well before the fifty year period and its function and importance continued until the educational facilities of the Callaway County town were desegregated. The period of significance--1937 to 1968--is a discrete and finite period clearly associated with the building's areas of significance.

NARRATIVE: The writers of the United States Constitution did not specifically define citizenship nor the rights of citizenship. In the 1858 Dred Scott decision, the court interpreted the Constitution to mean that only white people were citizens, and therefore had rights that others did not have. At the end of the Civil War, in 1865, Missouri wrote a new state constitution as was required by the federal government, requiring separate schools for blacks and whites. Though the fourteenth amendment to the US Constitution later stated that all persons born in the United States were citizens and have equal protection under the law, the court still accepted the practice of providing "separate but equal" facilities, including schools. (Hamlin, 1984, p. 98). Joyce Holman (1995, p. 5), in her documentation for the listing of Lincoln School in Audrain County on the National Historic Register, quotes an article from the Journal of Negro History that the laws governing education for Negroes was amended several times to assure that facilities for the black population were kept separate from those for whites. "The 1865 law said only that schools for African Americans must be established, and noted that separate schools 'may' be maintained. In 1875, the wording was changed to say that African American schools 'shall' be separate entities, and in 1889, that separation was further defined to the point that it became a crime for the races to mix within a school. The latter law stated that 'it shall hereafter be unlawful in the public schools of this state for any colored child to attend a white school or any white child to attend a colored school.' From that time until the 1950's Missouri operated under two separate school systems."

In 1866, schools for black children were authorized by the Missouri legislature. It was not until 1880 however, twelve years after Fulton's first public school for white children was opened, that the first "school" for black children opened in Fulton, with classes being held in rooms of churches. Two years later, North Elementary School for black children was constructed at the corner of Westminster Avenue and West Eighth Street. This school served the needs of all Fulton's black children, from elementary grades to high school until 1937. (Hamlin, 1984, p. 21)

United States Department of the Interior
National Park Service

**NATIONAL REGISTER OF HISTORIC PLACES
CONTINUATION SHEET**

Section 8 Page 6

George Washington Carver School
Callaway County, MO

In 1902, there were 119 school districts in Callaway County, serving an enrollment of 5,904 white children and 1285 black. Of those 1285, approximately one-third (408) attended the Fulton North school. (Hamlin, 1984, p. 33). Though the North School population had dropped to 205 black students by 1907, the school was still overcrowded. By 1923, overcrowding resulted in a statement by Fulton School Superintendent J.T. Bush:

The colored school is crowded, and for several years, the board of education has had to rent additional rooms in buildings near the school. We have only one teacher in the colored high school and he is trying to do two years of work in one room." (Hamlin, 1984, p.66)

Though the two white schools at that time could boast of furnace heat and modern sanitation facilities, North School did not have these amenities. (In fact, the drawings for the new school indicated that the original school utilized outhouses that were to be "relocated" to the inside of the new school.) The school board had provided some funds in 1931 for bookshelves but the library facilities were nevertheless inadequate. Because of these overcrowded conditions, it was decided by the School Board in 1932 that North School should be used for the lower grades only. The thirteen graduates of North School that year were the last to receive their diplomas there. Since racial integration was still years away and there were no funds to build a new black high school, high schoolage black students were to be bused to the high school department of Lincoln University in Jefferson City, 25 miles away

In early spring of 1935, the board of education decided that a new black school should be built at that same site. The board applied for a \$111,000 federal grant from the Public Works Administration. Its approval provided almost half the \$247,000 needed to purchase land and build a new high school for white children and to build the new North School for black students, as well as remodel the old high school building as an elementary school. The new school was designed by architects Felt Dunham and Kriehn from Kansas City. Their drawings had been retained by the Fulton Board of Education and have been a valuable resource in compiling this report.

On November 12, 1937, the namesake of the building, Dr. George Washington Carver, about 78 years of age at that time, traveled from Tuskegee, Alabama to Fulton to dedicate the new school. Dr. Carver was born in Diamond, Missouri of slave parents in about 1864 and was internationally recognized for his scientific experiments with common agricultural products, such as peanuts and sweet potatoes. His acceptance of the invitation was considered "a distinct honor for Fulton as he is about 78 years of age and has declined any speaking engagements in the past." (Famous Negro will dedicate, 1937, p.1). Although Lawrence Elliott, in his book George Washington Carver: The Man Who Overcame, (1966, p. 244) stated that "some eighteen schools across the country had been named for him" (as of 1966), it is not known if he personally dedicated any of the others besides Fulton's.

The local newspaper, *The Missouri Telegraph (The Weekly Sun -The Fulton Gazette)* provided the following account of Dr. Carver's Dedication:

The George Washington Carver School was officially dedicated Friday night when Dr. George Washington Carver, famous Negro scientist of Tuskegee Institute, spoke in the auditorium of the new school.

The auditorium was crowded and it was estimated that more than 1,000 persons were present, of which number at least 300 of them were white.

Dr. Carver talked for an hour and three-quarters and gave a very interesting demonstration during which he showed a number of scientific experiments for which he has gained considerable fame in the world of science.

United States Department of the Interior
National Park Service

**NATIONAL REGISTER OF HISTORIC PLACES
CONTINUATION SHEET**

Section 8 Page 7

George Washington Carver School
Callaway County, MO

Presiding at the program, which began at 8:30 o'clock, was W.D. Van Buren, principal of the school. The dedication services were opened with the singing of the Negro National Anthem, "Lift Every Voice and Sing," and was followed by the scripture reading by Dr. M.A. Richardson of Fulton. A musical number was then given by Troy Bradford and S.J. Reedy, principal of Lincoln High School at Jefferson City, brought greetings from his school.

Dr. Carver was introduced to the audience by Professor W.C. Reid, of the Missouri School for the Deaf faculty here, who had become acquainted with Dr. Carver while he was a student at Tuskegee Institute.

Following Dr. Carver's address the Board of Education was presented and Sparrel McCall, president of the board, accepted the key to the building from Professor J.T. Bush, former superintendent, who was acting on behalf of the contractor. This was followed by remarks from several guests, and the program was closed with the reading of the benediction. (Dr. Carver Dedicates, 1937, p.1)

The following morning, Dr. Carver made a brief talk at Westminster College chapel, and told students that each of them had "sufficient equipment to make a success in life if they had the ambition and desire to use it properly." The hands and other physical equipment of the individual were sufficient to meet all the demands of life. While in Callaway County, Dr. Carver also showed an interest in the fire clay of this region and believed that it could be used for products other than brick and tile. He took some of the clay back to his laboratory to study its possibilities. (Dr. Carver Spoke, 1937, p.1). Dr. Carver was also said to have found the hedgeapple to be edible while visiting Fulton (George Washington Carver Memorial Inc. flyer, no date).

Interviews with Fulton residents who attended or taught at Carver School also show how important the school was in the lives of the black community. Arned Logan began her education at the Carver School as a first grader in 1940. She graduated from the school as an eighth grader in 1948. She later served as the school secretary from 1964 to 1982 when the school closed. In a personal interview with her June 19, 1996, she recalled the following about the school, the faculty, the curriculum, and the community.

School procedures - The school would open around 8 am and each teacher would conduct a Class Opening. This was time set aside each morning so that the teacher could lead the class in a time of song (e.g., "Today is Monday") and a prayer...Every Wednesday we marched into the gym to the sound of music and watched one of the grades present a program...the responsibility of presenting a program was rotated amongst the classes...we had operettas, costumes, guest speakers, etc.

School Yard Rules - After the school was out, it was understood that no one stepped foot across the school yard grass. Mr. Van Buren [principal] was known to watch potential violators from behind his office window shade.

Grading System - This was based on the letter system:

E = excellent
S = superior
M = medium
I = incomplete
F = failed"

Calendar Year - We started school after Labor Day and ended in May. There were no "snow days" and holiday/seasonal vacations were limited to a few days."

Faculty/Staff- "Professional development for teachers did not happen until after integration. After

United States Department of the Interior
National Park Service

NATIONAL REGISTER OF HISTORIC PLACES
CONTINUATION SHEET

Section 8 Page 8

George Washington Carver School
Callaway County, MO

that, the majority of Carver teachers would travel to St. Louis or Kansas City for workshops. Teachers were seldom absent... they (teachers) seldom dated / married. In the sixties, my part time salary as secretary to the school principal was \$100.00 per month (\$75.00 take home)...At that time there was no retirement, insurance, or benefits...I do not imagine that the teacher's salary was too much different." Griffith A. Hamlin (1984, p. 73) made note in his book, A Community and Its Schools, that by 1924, salaries for teachers in the North School were \$585 per year, with the principal receiving \$900 per year.

Administration - "Mr. Wardell Van Buren served as the principal for many years. Everyone affectionately called him 'Fess', which was short for 'Professor'. During his tenure, he started and was actively involved in a school organization called the Young People's Progressive Club (See extracurricular activities)...Mr. Van Buren was known to stay at the school, sometimes as late as 12 am..."

Curriculum - "We received our books from the Fulton School District. The main subjects were spelling, reading, writing, and arithmetic. Once we were in 7th or 8th grade, we took World History....Art and music were not separate classes until after integration took place. There was no "special education" that took place at that time; however, each class was divided into two reading groups, with the same teacher overseeing both groups."

Discipline - "Usually the individual teachers would take care of the behavior issues without the assistance of the principal. Typical 'first offenders' were given a paddling...'second time' offenders were made to cut their own (tree) switch and return it to the teacher. All paddling/switchings were conducted in the gym on the stage. The parent/teacher relationship was great...there were no formal parent/ teacher conferences."

Extracurricular Activities - "Under the direction of Mr. Van Buren, the school was always a busy place. Activities included athletic tournaments with other black schools (e.g., St. Charles, Douglass School, Mexico, etc.)...the team colors were maroon and gold...the boy's baseball team had the mascot of 'Bombers'...there was also a girl's softball team, which played on the back playground."

Desegregation Related Issues - "The Carver School had its' own library, as blacks were not allowed to go in the Fulton Public Library at that time...so, during evening hours, school children could go into the Carver School Library and read or check out books. Mr. Van Buren (principal at that time) supervised, as he would usually be at the school." (This further illustrates how Carver School served as a center for the entire black community.)

Mrs. Billie Taylor, was a fourth grade teacher at the Carver School from 1950 - 61. Due to an difficulties with a pregnancy, she was forced to quit her teaching job. At that time, faculty segregation was still occurring in Fulton; therefore, she was not able to obtain teaching employment in Fulton again until 1962 when there was job opening at the Carver School. Mrs. Taylor then served as the school's first (and only) female principal from 1962 until it closed in 1982. Mrs. Taylor later served as the principal of Bush School until 1987. In a personal interview Mrs. Taylor stated, "when the Carver School closed in 1982 the teachers were allowed to move furniture from the school to the Center School....later on the school district held "surplus" auctions and thus, some of the Carver School items were obtained by some of the elementary schools (i.e., McIntire, Bartley, and Bush)." (Personal interview, June 18, 1996)

The Supreme Court decision of May 17, 1954 had ruled that segregating students solely on the basis of race could no longer be practiced in public schools, but in Fulton full desegregation took fourteen years. Fulton began the process in July of 1954, two months after the Supreme Court decision, when the Board of Education announced that the Fulton High School would be open to black students and that the transportation to Lincoln High School in Jefferson City would be terminated. Prior to that ruling, from 1932 until 1954, black high school students had waited outside North School, (and later Carver school), to board the bus to Jefferson City to Lincoln High School at Lincoln University. By 1952-53, an average 56 black students made the "daily round trip of over 50 miles, picked up and returned in front of Carver

United States Department of the Interior
National Park Service

**NATIONAL REGISTER OF HISTORIC PLACES
CONTINUATION SHEET**

Section 8 Page 9

George Washington Carver School
Callaway County, MO

school, with their expenses paid by the Fulton school district." (Hamlin, 1984, p. 98). An exception to this practice occurred in 1952, when black high school student Jack McBride, now a Fulton community leader and president of the local NAACP, refused to be bused. (Missouri Advisory Committee, 1979, p. 15). Even though the high school students were integrated in 1954, Carver School continued to meet the needs of the black school children of Fulton, grades first through ninth, until 1968, when it was finally desegregated and incorporated into the new integrated system as a sixth grade attendance center for all pupils.

In 1982, Carver School was closed, and was used for storage until the spring of 1989, when the George Washington Carver Memorial corporation was formed and the school district allowed it to use the building to preserve the history of the black community. Presently the first floor classrooms are used for housing memorabilia of Dr. Carver and his visit, local black history, and a black history library. It is the intention of the corporation that the building once again become a focal point of Fulton's black community for social, cultural and educational activities. The second floor was made available in 1996 to the Fulton Family Resource Center, a newly formed organization funded through a \$59,000 Youth Violence and Delinquency Prevention Program grant to encourage collaboration of existing resources for children and families in the community.

With this rich history, this site still remains where Fulton's first black school was built, and where the building housing Carver school was dedicated by George Washington Carver; where Fulton's black community were educated and continue to meet today. It is still a significant and integral part of not only the black community but of the history of all of Fulton in Callaway County.

United States Department of the Interior
National Park Service

**NATIONAL REGISTER OF HISTORIC PLACES
CONTINUATION SHEET**

Section 9 Page 10

George Washington Carver School
Callaway County, MO

Carver School Building receives Heritage Award. (1990, May 3) Fulton Sun.

Dr. Carver dedicates new school in Fulton. (1937, Nov. 18) Missouri Telegraph (Weekly Sun-The Fulton Gazette), p. 1

Dr. Carver spoke at Westminster. (1937, Nov. 12?) Missouri Telegraph (Weekly Sun-The Fulton Gazette), p. 1

Elliott, Lawrence. (1966). George Washington Carver: The Man Who Overcame. New Jersey: Prentice Hall.

Famous Negro will dedicate a school. (1937, Nov. 11). Missouri Telegraph (Weekly Sun-The Fulton Gazette)

Felt, Dunham and Kriehn (1936) Architectural plans for the North Grade School, Fulton, MO. Kansas City.

George Washington Carver Memorial. Flyer. (No date). (Available from George Washington Carver Memorial Inc. 909 Westminster Avenue., Fulton, MO 65251.)

Hamlin, Griffith A. (1984). A community and its schools. Fulton, MO: Board of Education, Fulton Community Schools.

Holman, Joyce (1995). National register of Historic Places Registration Form. Jefferson City, MO: Missouri Department of Natural Resources.

Missouri Advisory Committee to US Commission on Civil Rights. (1979, May) Chapter 6. Schools. Race relations in the Kingdom of Callaway. Washington DC: US Printing Office.

United States Department of the Interior
National Park Service

**NATIONAL REGISTER OF HISTORIC PLACES
CONTINUATION SHEET**

Section 10 Page 11

George Washington Carver School
Callaway County, MO

Verbal Boundary Description: Beginning at the northeast corner of the intersection of Westminster Avenue and Carver Street, proceed north along the east right-of-way of Westminster Avenue 332 feet; then proceed east 131.82 feet; then proceed south thirty-six feet; then proceed east 132 feet to the right-of-way of Poston Avenue; then proceed south along the west right-of-way of Poston Avenue 228 feet to the right-of-way of Carver Street; then proceed west along the north right-of-way of Carver Street 262.2 feet to the point of beginning.

Boundary Justification: This is the portion of Block 4 of Engle Backer's Addition to the City of Fulton, designated as the "former school grounds" in the legal description, historically associated with the George Washington Carver School, including that part of the block on which the building was constructed in 1937, as well as that portion added the next year.

United States Department of the Interior
National Park Service

**NATIONAL REGISTER OF HISTORIC PLACES
CONTINUATION SHEET**

Section 11 Page 12

George Washington Carver School
Callaway County, MO

1. Tina Mann, Assistant Professor
William Woods University
200 West Twelfth Street
Fulton, MO 65251
573/592-4374
August 26, 1996
Original draft nomination, items 1-11; editor, items 1-11

2. Tammy Paris, Technical Assistant
(Fulton Family Resource Center)
William Woods University/Connections Project
200 West Twelfth Street
Fulton, MO 65251
573/592-4337
June 19, 1996
Items 8, 10

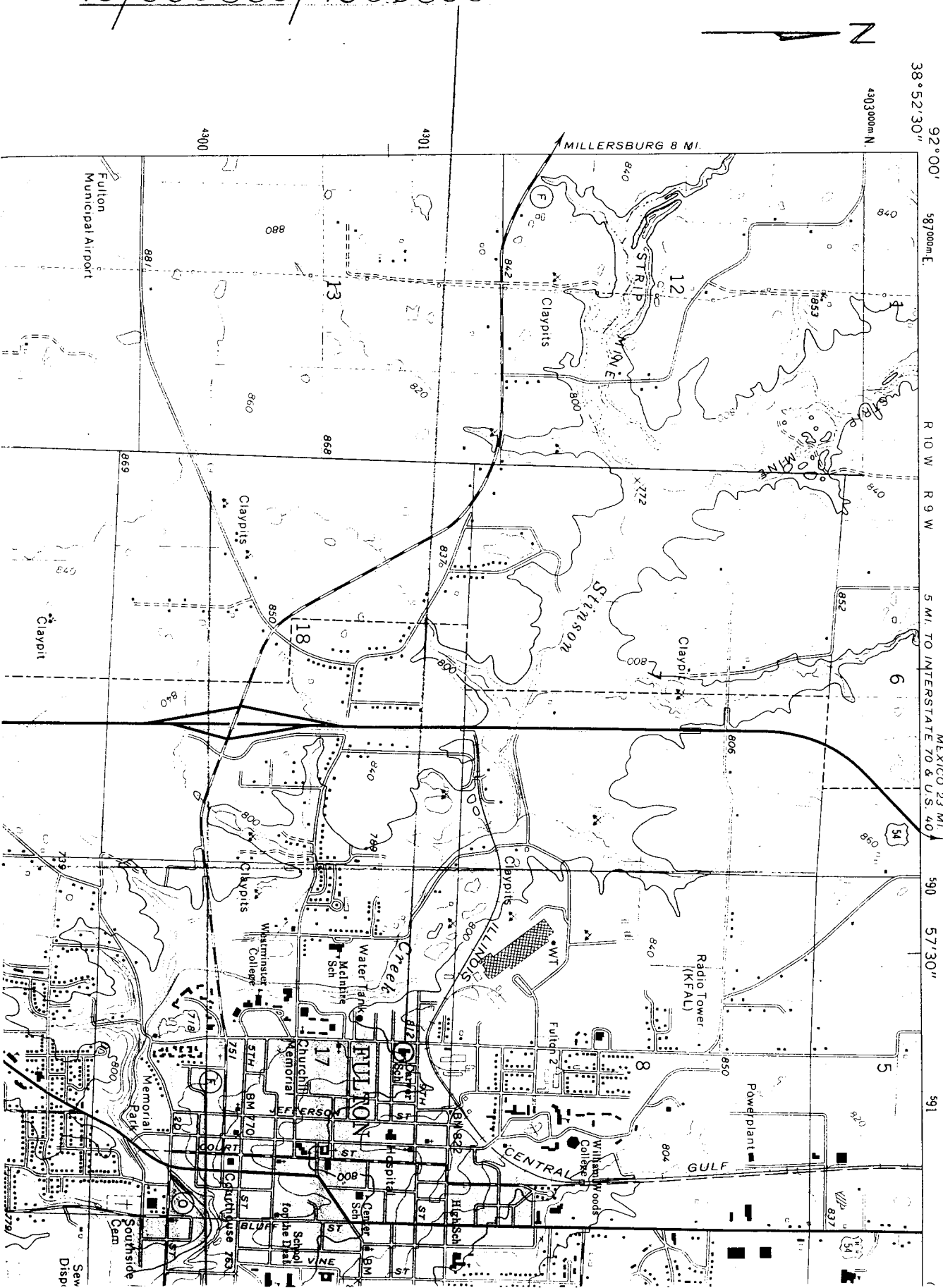
3. Robert Hickem, Director
Fulton Family Resource Center
Carver Memorial
906 Westminster
P.O. Box 451
Fulton, MO 65251-0451
573/642-5551
Items 8, 10

GEORGE WASHINGTON CARVER SCHOOL
 CALLAWAY COUNTY, MO
 15/590830/4300890

(MILLERSBURG NE)
 7561 NE

UNITED STATES
 DEPARTMENT OF THE INTERIOR
 GEOLOGICAL SURVEY

(STATI)
 DEPARTMENT
 WALLACE B. I



George Washington Career School

Callaway County MO

Steven Mitchell

June 14, 1996

Missouri Cultural Resource Inventory
camera facing northeast

#1 of 10



George Washington Carver School

Callaway County MO

Steven Mitchell

June 14, 1996

Missouri Cultural Resource Inventory

camera facing east

2 of 10



George Washington Carver School

Callaway County MO

Steven Mitchell

June 14, 1996

Missouri Cultural Resource Inventory

camera facing northeast

3 of 10



George Washington Carver School

Callaway County MO

Steven Mitchell

June 14, 1996

Missouri Cultural Resource Inventory

camera facing northwest

4 of 10



George Washington Carver School

Callaway County MO

Steven Mitchell

June 14, 1996

Missouri Cultural Resource Inventory

Green - facing north.

5 of 10



George Washington Carver School

Callaway County mo

Steven Mitchell

June 14, 1996

Missouri Cultural Resource Inventory

camera facing southwest

6 of 10



George Washington Carver School

Callaway County Mo

Steven Mitchell

June 14, 1996

Missouri Cultural Resource Inventory

first floor central stairway, camera facing west

7 of 10



George Washington Caevee School

Callaway County MO

Steven Mitchell

June 14, 1996

Missouri Cultural Resource Inventory

first floor classroom, camera facing west

#8 of 10



George Washington Carver School

Callaway County mo

Steven Mitchell

June 14, 1996

Missouri Cultural Resource Inventory

second floor classroom, camera facing north

9 of 10



George Washington Carver School

Callaway County MO

Steven Mitchell

June 14, 1996

Missouri Cultural Resource Inventory

first floor gymnasium, camera facing west

#10 of 10



EXTRA
PHOTOS







