



# FCA News

FOR MEMBERS OF THE FINNISH CENTER ASSOCIATION

November 2014

## CALENDAR OF EVENTS

### NOVEMBER

- 1 Rental
- 4 Tuesday Red Cross Blood Drive 1-7 pm
- 7 Friday Night Buffet 5-8 pm
- 9 Sunday Brunch Noon - 1:30 pm
- 9 Sunday General Membership Meeting 2 pm
- 12 Rental
- 12 Wednesday Board Meeting 6:30 pm
- 15 Saturday Scandinavian Bazaar 10 am-4 pm
- 19 Rental
- 21 Friday Night Buffet 5-8 pm
- 23 Rental
- 30 Sunday Open House 1-4 pm
- 30 Sunday Film- "Rare Exports: A Christmas Tale" 3 pm

### DECEMBER

- 3 Rental
- 5 Friday Night Buffet 5-8 pm
- 6 Saturday Finnish Independence Day Party 7 pm  
Olli Hirvonen Finlandia Foundation Performer of the Year
- 9 Tuesday "A Little Christmas Celebration" 7 pm Free
- 10 Rental
- 13 Saturday Pikkujoulu & Finnish Christmas Dinner 3 pm
- 14 Sunday Finnish American Singers of Michigan Concert  
3 pm
- 17 Rental
- 19 Friday Night Buffet 5-8 pm
- 21 Sunday Candlelight Service 2-4 pm
- 31 Rental



**NO LUNCHEON IN  
NOVEMBER AND  
DECEMBER**

#### Weekly Events

- Finnish American Singers  
Mondays 7 pm
- Library  
Open Monday 10 am-2 pm
- Nikkarin Talo  
Mondays 9 am
- Finlandia Garden Club  
Mondays 9 am

#### Monthly Events

- Finnish Conversation  
1st Friday of the month 10 am
- Sunday Brunch  
2nd Sunday of the month  
12-1:30 pm
- Book Club  
Last Monday of the month 1 pm
- Luncheon  
Last Wednesday of the month Noon
- Open House  
Last Sunday of the month 1-4 pm

**RESERVATIONS ARE  
SUGGESTED FOR  
DINNERS AND LUNCHEONS**

## CHAIRMAN'S CORNER

Fall is upon us with beautiful colors all around. I hope you have been able to enjoy the warm autumn that we have had.

Our successful Building Dedication party in September was a very nice introduction to all upcoming activities this fall. We are gearing up for our yearly flea market and bazaar, poker events and Finnish Independence Day celebration just to name a few.

As mentioned before, the FCA will also participate with Finlandia Foundation plans to honor the 150th Anniversary of the Finnish composer Jean Sibelius in 2015. These plans include nationwide Sibelius Concerts by various orchestras.

We are also resuming work on our long term business plan in order to secure the future of our Center. We need new members, new ideas for activities, both social and cultural. Please share your ideas with us. It will help all of us.

I am very grateful for all the hard work the volunteers have done in the last several months. We do welcome new volunteers. If you have time or are retired and willing to participate in our volunteer work, please do not hesitate to contact us.

As indicated in the last newsletter, we plan a thorough cleaning of the center after the flea market is over on October 11. All unnecessary items that we do not sell at the flea market will be donated or disposed of. If you have items stored anywhere at the FCA facility, please plan to remove them prior to October 11 deadline.

The plan is also to expand our Newsletter. One page (+) will be reserved for the personal stories from our membership. We would like to see these stories to describe events in the lives of our members. If you have stories that you might like to share with other members, please contact Fran Fadie, our publicity chairperson.

Mia Lamminen, Chairman

## GENERAL MEETING

**Sunday,  
November 9  
2:00 pm**



35200 W. Eight Mile Road  
Farmington Hills, MI  
48335-5108  
Tel: (248) 478-6939  
Fax: (248) 478-5671  
fcacenter@sbcglobal.net  
www.finnishcenter.org

### Officers

Mia Lamminen, Chairman  
Roger Wanttaja, Vice Chairman  
Robert Waissi, Secretary  
Marlene Ruuskanen, Treasurer

### Board of Trustees

#### 1 Year

Carl Aebersold, Olli Lamminen,  
Marlene Ruuskanen

#### 2 Year

Lois Makee, Robert Waissi,  
Roger Wanttaja

#### 3 Year

Lila Ball, Mia Lamminen,  
Margaret Laurila

### Alternates

#1 Katie Waissi  
#2 Terry Ball  
#3 Carol Tudball

### Financial Review

Melissa Biddix, Maria Hill,  
Erik Lindquist

### Committee Chairpersons

#### Building & Grounds

Carl Aebersold

#### Cultural

Yvonne Lockwood

#### Education

Heidi Mellanen-Swiecki

#### Finance

Mia Lamminen

#### Gift Shop

Margaret Laurila

#### Mailing

Alice Manley

#### Membership

Eija Lyytinen-Tatseos

#### Publicity & Publications

Fran Fadie

#### Social

Lila Ball

### SENIOR CITIZEN HOUSING CORPORATION

Paul C. Hendrickson, Chairman

#### *Tapiola Village*

Laura Fultz, Manager  
248 471-3802

**Tapiola@ameritech.net**

#### *Freedom Square*

Jennifer Bridges, Manager  
248 442-7250



## FROM THE FCA LIBRARY



Last month we started a series on Finnish design. This month our topic will be Arabia (Ah'-rah- bee-ah), a firm that has been making high quality objects for the home for over a century.

In 1873 the Swedish company Rörstrand set up the Arabia factory in Helsinki on a plot of land already bearing the Arabia name. They chose Finland because it was closer to Russia, where they wanted to export porcelain, earthenware, and other pottery. Soon the Arabia factory was producing half of Finland's total ceramics output, which included art pottery, domestic and utility wares, sanitary wares, tiles, and even bricks. During the First World War Rörstrand sold their entire share capital to Finland. Arabia saw vigorous growth after Finnish Independence. They continued to produce during the war years and by 1940 employed over 2,000 people. By the late 1930's, Arabia was the largest producer of porcelain in Europe.

Arabia's products range from classic to contemporary and their tableware is versatile enough to be used for everyday dining as well as formal celebrations. The designs are known for their timeless beauty, high quality and endless functionality, summing up their motto and promise, "All set for life." The refined design is loved not only in Finland, but has gained popularity all over the world, including Japan. Besides dinnerware, Arabia produced the annual *Kalevala* collector plates, each with a scene from the *Kalevala*, from 1976 - 1999. They also produce the Moomin design articles, as well as many art objects.

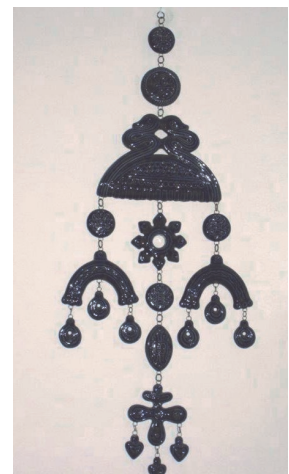
Throughout its existence, Arabia has employed big name designers, the most famous being Kaj Franck and Birger Kaipiainen.

Kaj Franck (1911 - 1989) was born in Viipuri. He has been described as the conscience of Finnish design. He removed everything excessive in his designs, leaving only the essentials. His most well-known is the Teemu design. His theme was "Simple is beautiful." His inspiration and principles began a tradition in Finnish design which is still alive and strong today.

Birger Kaipiainen (1915 - 1988) is one of the most successful and well-known ceramic artists in Finland. Unlike Franck, Kaipiainen preferred decorative fantasies in dramatic colors in themes strongly infused with surrealism. His style estranged many advocates of modernist design. His most popular design is the Paratiisi tableware with its luxuriant fruit-and-flower ornamentation. Its manufacture was stopped in the mid-70's, but it has since come back into production. Today it is regarded as one of the classics of Finnish design.

Arabia products can be seen at the Arabia Museum, part of the Design Museum in Helsinki. Factory tours are available. You can also see some Arabia products in our gift shop.

Lillian Lehto, FCA librarian



## NOVEMBER IN THE GARDENS

The leaves are changing color and the mornings are brisk but still we persist with our workdays. We have been cutting back seed heads on many of our perennials and either spreading them in multiple areas or exchanging some of the varieties with others such as likeminded individuals at the Ann Arbor native seed exchange. We are always interested in adding to our varieties of natives, as native plants have multiple benefits. Native plants support our pollinators, birds, butterflies, and absorb pollutants in rainwater preventing their release into the Rouge River watershed.

We were awarded another Beautification Award by the city of Farmington Hills in October and David Sharpe was given a special award at the banquet for his work on the Finlandia Gardens here at the Finnish Center. You will be able to see all this great publicity on local cable television.

We now have a ramp added to our deck near the woodshop making it handicap accessible. The entrance across from the woodshop also has an improved step. We will soon be placing chains at the bridge and wetland walkways to limit access as sleet and snow can make the Trex used in these areas slippery.

If you have any questions, comments, or donations, you can contact me at [gaylegullen@hotmail.com](mailto:gaylegullen@hotmail.com) or (734) 546-5190.

Gayle Gullen  
Finlandia Garden Club President



## Neil J. Lehto

Attorney and Counselor At Law

[nlehto@sbcglobal.net](mailto:nlehto@sbcglobal.net)

4051 Wakefield Road  
Berkley, Michigan 48072

(248) 545-1753 (Phone & Fax)

## FINNISH FILM SERIES

Sunday, November 30, 2014

3:00 p.m.

Rare Exports: A Christmas Tale  
(directed by Jalmari Helander, 2010)

In Finnish with English subtitles

No admission, donations appreciated

This is a very enjoyable film to put you in the mood for Christmas.

It is a Finnish horror-fantasy film about local reindeer herders living near the Korvatunturi Mountain who discover the secret about Santa Claus.

The mountain is excavated with an explosion that uncovers a huge sacred grave and the occupant is still alive. It is the supernatural being responsible for the Santa Claus legend; rather than reward good kids, it punishes those who are naughty. Strange things happen: reindeer are mysteriously killed and supplies and naughty children disappear. This is a story about trapping this culprit and recovering the losses caused by the excavation. It also explains how Santa's are able to be everywhere at Christmas.

This film has won numerous international awards and Robert Ebert called it "an original, daring, carefully crafted film." It got a rousing audience applause when it was shown at the Michigan Theater in Ann Arbor in 2012 and again in 2013.



## MEMORIALS

When making a memorial donation, you may direct it toward a specific fund. The funds available are: FCA General Fund, Library, Scholarship, Hoijakat Folk Dancers, Drama Club, Finn Weavers, Garden Club, Happiness Fund, FinnFolk Musicians and Finnish American Singers. If a donation is undesignated, it goes to the General Fund for expenses of the Center.

Please make your check out to the Finnish Center Association and send donations to: FCA, 35200 West Eight Mile Road, Farmington Hills, MI 48335.

You may also direct your donation toward the Senior Housing, but then your check must be made out to FCA Senior Housing Corp.

Please include full name, address, date of death of the deceased as well as the name and address of the next of kin to whom the acknowledgement card is to be mailed. **Also include all names of donors.** If the deceased is a non member of the FCA please include city and state of residence.

In memory of FCA member **Anna Kimler** (9/22/14) donations have been made by Dagmar & Gerald Malstrom, Charlotte Lytikainen and Pearl & Ray Wanttaja.

In memory of FCA life member **Ellen Kompsie Rajala** (9/25/14) donations have been made by Dagmar & Gerald Malstrom, Pearl & Ray Wanttaja, and Charlotte Lytikainen.

In memory of FCA life member **Margaret "Marge" Murto Olson** (8/23/14) donations have been made by Norbert & Luise Leppanen and Pearl & Ray Wanttaja.

In memory of FCA life member **Waino John Tervo** (7/4/14) a donation has been made by June Tervo.

In memory FCA life member of **Vera H. Oja** (9/20/02) a donation has been made by Steven & Linda Oja Jacobs.

In memory FCA life member of **Victor Williams** (8/16/14) donations have been made by Brigid O'Hara, Pearl & Ray Wanttaja and Michael Leahy.

The FCA would also like to extend condolences to the families and friends of:

FCA life member **Victor Williams** (8/16/14)  
 FCA member **Anna Kimler** (9/22/14)  
 FCA life member **Ruben Bjerkness** (9/23/14)  
 FCA life member **Marge Olson** 9/23/14)  
 FCA life member **Ellen Rajala** (9/25/14)  
 FCA life member **Helen Ebejer** (9/26/14)  
 FCA life member **Lawrence Luoma** (9/26/14)  
 FCA life member **Toivo Strang** (10/1/14)



## FINNISH AMERICAN SINGERS HOLIDAY CONCERT

**SUNDAY  
DECEMBER 14**

**3 PM**



**NOVI CONCERT  
COMMUNITY BAND**

**COMING IN  
DECEMBER**

**STAY TUNED!**

## GOING PLACES

**Viva Italiano** - Tuesday, November 18, \$62. You will begin with a narrated tour of the National Shrine of the Little Flower Catholic Church in Royal Oak. It features elaborate interior and exterior sculptural work by Italian-born sculptor Corrado Parducci. Lunch will be at Loccino Italian grill where you will have five Italian menu options. Your next stop will be at Fieldstone Winery in downtown Rochester where you will sample some of their award-winning wine. Last stop will be shopping time at the amazing shopper's paradise Nino Salvaggio International Market in Troy. You must make your meal choice ahead of time for this trip also. Flyers (with coupon) available at the FCA or call Evelyn (248) 357-0186. Combo with Nardineers. Depart at 9:30 am and return about 4:00 pm.

**Detroit Symphony** – Sunday, January 11, 2015, \$96. Lunch will be at Sinbad's. Combo with Nardineers. Details to follow.

**Soaring Eagle** – Monday, February 16, 2015, \$38. Featuring the Kingston Trio. Combo with Nardineers. Leave at 8 am and return about 9:30 pm.

**Purple Rose Theatre** – Sunday, March 1, 2015, \$92. The play will be Steel Magnolias. Combo with Nardineers. Leave at 10 am and return about 5:45 pm.

**Meadowbrook Theatre** – Sunday, April 25, 2015, \$82. The performance will be Meshuggah Nuns. Lunch at Kings Court Castle. Combo with Nardineers. Leave at 10:15 am and return about 5:15 pm.

If you leave your car at the FCA while on a trip, please park at the north end of the property. If you park near the main or lounge entrances you are using spaces needed for other functions.

Pearl Wanttaja  
(248) 541-0054



## MEMBER DIRECTORY

A new directory is in the works. If you wish to receive one please let the FCA know, The deadline is December 15. There will be a small fee for each requested directory.

We are also looking for some advertisers. If you are interested or know someone who might be interested in advertising in the upcoming directory, contact Eija at the FCA.

## SUNSHINE LADY

Sending get-well cards, thinking-of-you cards and words-of-encouragement cards to FCA members.

This little-known function has been around for many years, and can only be accomplished when I am notified that someone needs a card. Send or call your card requests to the attention of the "Sunshine Lady" at the FCA.

Thank you, Marge Salo



## E & G Heating

Heating and Cooling  
Service and Installation  
Mostly Residential

(734) 812-6318 - Greg Makila

## RENT THE FCA

If you, or someone you know, has a need for a hall to rent for special events such as birthdays, weddings, baby or bridal showers, memorial services, please consider the Finnish Center. Contact the FCA office at (248) 478-6939 for more details.

## FINNISH INDEPENDENCE DAY

Finnish jazz guitarist Ollie Hirvonen  
 Saturday, December 6, 2014  
 7:00 pm  
 Admission: \$20.00



We will celebrate Finland's Independence Day with jazz guitarist Olli Hirvonen, Finlandia Foundation National's Performer of the Year. Born in Lappeenranta, Ollie began his study of classical guitar and piano at the age of nine. He earned his bachelor of music at the Sibelius Academy in Helsinki and his master degree at the Manhattan School of Music in New York City, where he now lives.

This very accomplished performer has appeared in many festivals and events, including Nordic Cool at the Kennedy Center in Washington D.C. in 2013. In 2011 he was named Pori Jazz Festival Artist of the Year. And this year he launched his debut album, "Detachment."

Join us in commemorating Finland's independence and enjoy an evening of great music and good food with old friends.

## SCHOLARSHIP COMMITTEE

Applications for 2015 scholarships will be available in November on the website or in the Finnish Center office.



## BAKERS

Seven of our faithful volunteers baked eight batches of pulla on October 10 to sell at the Flea Market. We also made cinnamon rolls for the Sunday Brunch on October 12. The bakers were Hannah Carlson, Barb Whitty, Betty Taipalus, Tobie Line, Lorraine Hannah, Dee Aebersold and Ilene Yanke. Won't some of you come to join us?

To prepare for the Scandinavian Bazaar we bake Christmas tarts on Thursday, November 6, at 9:30 am. On Friday, November 14 at 9:30 am we'll bake pulla. We meet up again in January 2015.

Kiitos,  
 Ilene Yanke



## A LITTLE CHRISTMAS

Tuesday, December 9, 2014  
 7:00 pm  
 Free

Choirs, soloists, pianists, and bell ringers will provide an evening of secular and religious Christmas music. This event began at St. John's Lutheran Church many years ago. After subsequent performances at the Bethlehem Evangelical Lutheran Church and then at Celebration churches, the FCA has agreed to host these wonderful musicians who promise a rousing performance in preparation for the Christmas season.

You won't want to miss this! See you here!





**SCANDINAVIAN BAZAAR**  
**SATURDAY, NOVEMBER 15, 2014**  
**10 AM – 4 PM**

**Public Welcome**

at  
 Finnish Center Association  
 (248) 478-6939 or (734) 834-6085  
 \$1 donation at the door

**Featuring:**

Norwegian, Swedish, Danish, Icelandic and Finnish Imports and Crafts, Baked Goods, Pasties, Hand woven Rugs, Decorative Arts, Pottery, Lavender soaps and lotions, Crafts and more.....  
 ..... **Enjoy Scandinavian lunch while listening to music by Finnfolk**

**FASM CHRISTMAS GREENS SALE**

Three (3) items to choose from for delivery directly to the Finnish Center  
 the first week of December

OR

Order from among six (6) items that can be delivered any place in the contiguous states directly to your  
 doorstep, or that of your children, grandchildren, friends, or business associates!

Orders must be made by Monday, November 3<sup>rd</sup>. Order forms are at the FCA office and any FASM member would be happy to help you directly.

You can also contact me at [kakoskela@hotmail.com](mailto:kakoskela@hotmail.com)

You will be very happy with any of these products. Celebrate the holidays by enjoying our festive greens from the state of Washington state while supporting our singers!

Thank you!



(Descriptions on page 9)



## Local Delivery



**\$20 WESTERN CEDAR GARLAND**  
10' of fragrant,  
fresh cut western cedar garland.  
(Two 10' garlands pictured)



**\$20 NOBLE FIR DOOR SWAG**  
Newly designed, this item is the perfect alternative to a wreath. It is made from our hearty Noble Fir and includes 1 set of snow dusted cones and a red bow. Approximately 30"x19".



**\$20 22" MIXED EVERGREEN WREATH**  
An aromatic combination of fir, berried juniper and cedar. Color provided by red faux holly berries. A velvet water repellent bow is included for easy attaching.

## Direct Gift Delivery



Left to right, top to bottom:

1. Centerpiece with LED Candle \$35  
Cedar, Noble fir, pine, and berried juniper in oasis block & bowl. Accented by white cones and faux holly berries. Includes 10" tapered candle; 12" diameter.
2. 22" Mixed Evergreen Wreath \$39  
Aromatic combination of fir, juniper and cedar. Color provided by red faux holly berries and a checkered, water repellent bow.
3. Evergreen Gift Set \$72  
Set includes two 10' cedar garlands and a 22" mixed evergreen wreath.
4. 28" Mixed Evergreen Wreath \$44  
Largest, wreath is made from fir, juniper, cedar and complemented with faux holly berries and a red and gold tree bow.
5. Western Cedar Garland \$50  
Two 10' lengths of fresh cut western cedar garland. Pictured are 2 10' garlands.
6. Cone Gift Basket \$32  
Rustic basket filled with assorted pine cones. Large, medium, and small natural and snowy pine cones with berry accents. Basket 12" diameter, 6" deep.

Order via FCA or FASM at [kakoskela@hotmail.com](mailto:kakoskela@hotmail.com)



## WHY DO SO MANY HOLLYWOOD STARS HAVE SWEDISH ROOTS?

Friday, October 10, 2014 I received a call from a cultural editor of the largest newspaper in Finland, Helsingin Sanomat. He was interested to find out why so many Hollywood stars had Swedish heritage and only a few are of Finnish origins.

It is true that numerous super stars indeed have Swedish background. This includes Scarlet Johansson, Julia Roberts, Uma Thurman, Emma Stone, Michelle Pfeiffer, Kate Winslet, Val Kilmer and so on. The list is amazingly long.

However, there are few super stars in Hollywood - some already quite old - who have clearly a Finnish background such as Matt Damon, Christine Lahti, Jessica Lange, Vanessa Williams and Pamela Anderson. Unfortunately the list is quite short and the editor wanted to have an explanation why Swedes have fared so much better with their film careers.

I pondered the matter a few minutes and gave him my explanation. The USA received over 800,000 Swedish immigrants and only 300,000 from Finland. There are about three times more Swedes than Finns in the USA. So it is no wonder that there would be so many more Swedish film stars. Swedes also started to immigrate to the USA about 30 years earlier than Finns did.

By the time the business and film industries started blooming in the USA at the beginning of the 19th century, the Swedes were already settled in the USA. They were fluent in English, were prosperous and were part of the American society. At that time Finns had just arrived in the Michigan and Minnesota wilderness, and that's where most of them finally made their permanent homesteads. At the time of Finnish immigration the best of the farm lands had already been taken and the suitable employment were found within logging and mining industries. The chance for the Finns to prosper was clearly worse compared to the Swedes.

Finns are tough and tenacious. I truly believe that one-day Finns as actors will be the forefront of Hollywood. Los Angeles Philharmonic Orchestra excellent reputation is based on Eino Tuomi's skill as an orchestra leader. Adjoining Anaheim hockey team success was mostly due to Teemu Selanne.

Let us wait patiently and we will find more Finnish film stars in Hollywood - either from among Finnish Americans or directly from Finland.

Ismo Söderling  
Director, Immigration Institute  
Turku, Finland

## CANDLELIGHT SERVICE

Sunday, December 21  
2-4 pm

Refreshments & coffee will be served

We will be having a candlelight service in remembrance of our loved ones during this holiday season. An angel will be placed on a Christmas tree in their name.

We will be accepting donations for the angels as a fundraiser for the Finnish Center. Please send donations or drop them off at:

Finnish Center  
35200 8 Mile Road  
Farmington Hills, MI 48335

in care of Candlelight Service/Marlene Ruuskanen. Checks should be made out to the FCA with candlelight service in the memo.

This will be a beautiful Christmas gathering that should warm our hearts as we remember our loved ones at this special time of year!



Lila Ball, Social Committee

## GIFT SHOP

Up to 20% discount on all candy including new Finnish candies



Foods Available:

Kulta Katriina & Paulig Mokka coffee  
Thimbleberry & Sugar-free Blueberry Jam  
Juustoa/Squeaky Cheese  
Herring and Mustards  
Sweet & Salty Licorice  
Milk Chocolate candy bars with salt licorice  
Pearl Sugar  
plus a lot more

Unique Finnish Gift Items  
Discontinued Iittala items discounted  
Sauna Supplies

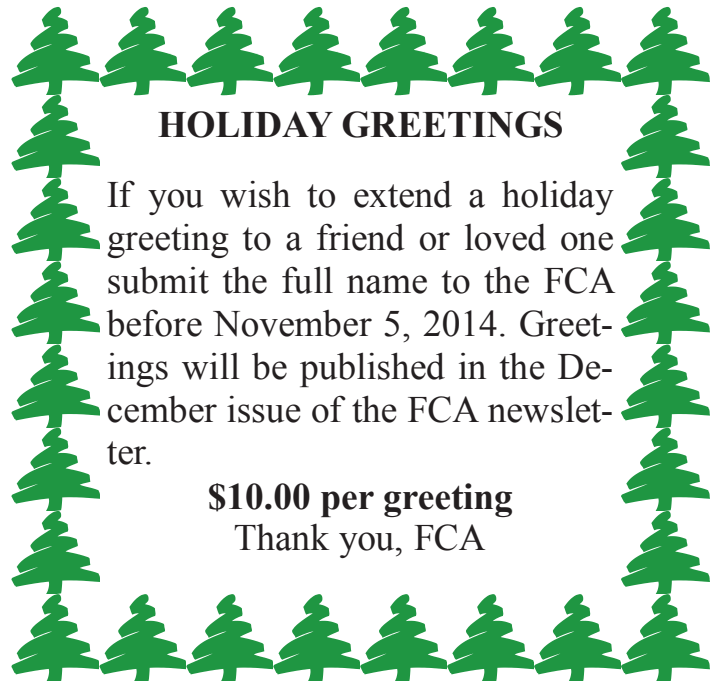
Card-carrying FCA Members receive a  
5% discount on  
all purchases over \$25.00  
(including food)



# American Red Cross

## Blood Drive

Tuesday, November 4, 2014  
1-7 pm



## HOLIDAY GREETINGS

If you wish to extend a holiday greeting to a friend or loved one submit the full name to the FCA before November 5, 2014. Greetings will be published in the December issue of the FCA newsletter.

**\$10.00 per greeting**  
Thank you, FCA

## FINLAND TODAY

First, I have mentioned many times before that Finland is the "Number One" coffee drinking country in the world. According to the number one coffee producer in Finland, Paulig, "Finns drink so much coffee already that they can't drink anymore". The average Finn drinks about 26.5 pounds of coffee per year. Compare that to Italy, one of the famous coffee drinking countries of the world, they drink on the average about 11.5 pounds per year. If you look at it another way, about one in every 100 coffee beans produced in the world comes to Finland. Coffee in Finland is considered as one of the "basic necessities", in stores it is always on sale. The stores write the coffee off as one of their "loss leaders". The coffee in Finland costs about one half as much as it does in Italy.

Earlier this year, Finland's Metso Corporation won three prestigious iF design awards. The iF design awards are given for industrial design of products that fulfill customer's needs, make their jobs easier, and set new standards in environmental efficiency. Metso's three design award winners are (1) The Metso Lokotrack LT106 mobile crushing plant, designed for crushing of hard rock and recycled materials for various purposes such as infrastructure construction, (2) The Metso MR Biomass Moisture Analyzer, the first industrial moisture measurement application utilizing the magnetic resonance phenomenon, and (3) The Metso Etacut II Scrap Shear used for crushing heavy mixed and demolition scrap, and the EtaShred ZZ Shredder. Both offer increased processing flexibility and low power consumption. The German based iF design award is regarded as one of most prestigious product design competitions worldwide. Metso is a leading industrial process providers, with customers in the mining, construction, paper & pulp, and oil & gas industries. Metso employs 16,000 professionals in 50 countries.

Travel to the Finnish Lapland is getting more popular each winter, especially at Christmas time. According to FinnPro (the former Finnish Foreign Trade Association), trips from Great Britain to see Santa Claus in Lapland are just about already sold out for Christmas and New Year's. More travel from Germany, Austria, and Switzerland is also expected as more of the people are getting interested in Lapland and cross-country skiing, snow shoeing, northern lights, ice castles, and other Arctic exotica. But travel from Russia is still a question mark. Last year the number of Russian tourist declined due to the economic and political situation. Jyrki Neva, CEO of Lapland Safari's, tells us that some Russian tour operators have gone bankrupt, but some in Lapland's tourist sector report that direct online sales from Russian customers have risen briskly.

One of the international market's top three credit rating agencies, Moody's, has announced that it will not issue an update of Finland's top credit rating. An update was due on October 3rd, but Moody's posted on its website that it will not issue an update at this time, presumably because the situation does not warrant a new look. Earlier this spring Moody's granted Finland its top AAA credit rating.

If you have some extra cash on hand, I have the ultimate lounge chair for you. The Finnish Remmus company has developed a revolutionary new luxury sun lounger. The Remmus lounger has a number of unique features compared to traditional sun loungers. The lounger turns automatically with the sun, and has integrated water sprayers to cool down the sunbather. Speakers with a Bluetooth connection are contained in the backrest of the lounger, which also features a watertight wireless charging station for your smartphone. As the evening approaches, the lounger is lighted up from underneath with LED technology. The Remmus lounger was designed to be used in high-quality hotels and resorts, and for individuals with some "spare cash".

And finally, Helvi, a school teacher and a little boy, Matti, were sitting next to each other at a soccer game, when Helvi asked Matti what grade he is in.

Matti: "I'll be in third grade in the fall."

Helvi: "I've been in school for over 25 years. Guess what I am."

Matti: "You must be pretty dumb."

Markku Ketola, marketola@yahoo.com

## PIKKUJOULU

SATURDAY, DECEMBER 13  
3 pm

Hold this date! We are planning a Pikkujoulu celebration for children and adults. There will be a children's party with fun, games, music and songs. Joulupukki (Santa Claus) will be making a special appearance to meet and visit with the children.

The children's party will be followed by a festive, traditional Finnish Christmas dinner. The dinner will include ham, several Finnish casseroles, rosolli, and rice pudding with an almond. One very lucky person will get the almond so they can make a wish!

Please plan to come enjoy this Christmas celebration for young and old!



## ADVERTISING RATES

DEADLINE:

**DEADLINE FOR DECEMBER ISSUE IS NOVEMBER 5TH**

EDITOR CONTACT INFO:

PAUL RAJALA

LAYOUT AND DESIGN:

NANCY RAJALA

E-MAIL:

[nrajala@comcast.net](mailto:nrajala@comcast.net)

### *FCA NEWS ADVERTISING RATES & SPECIFICATIONS*

FCA News is published 11 times annually (June-July issue is combined) by and for members of Finnish Center Association. Circulation is about 1,000 of your fellow FCA members, and others, per issue.

**Deadline/payment for ad is the 5th of the month preceding publication.**

Column (ad) width is 2-1/4" for rates quoted below. Other sizes quoted on request.

Rates for a camera-ready, black & white ad, per three month period:

3 month rate .....1" ad - \$30.00.    1.5" ad - \$45.00        2" ad - \$60.00

Pay for full year .....1" ad - \$100.00.    1.5" ad - \$150.00        2" ad - \$200.00

Photos: B&W photo ads incur a one-time charge of \$25.00 payable at first insertion.

## READ THE FCA NEWSLETTER ONLINE

**FINNISH CENTER ASSOCIATION**



35200 W. Eight Mile Road  
Farmington Hills, MI 48335-5208

Prsrt STD  
U.S. Postage  
PAID  
Farmington, MI  
Permit NO 250

**FCA MEMBERSHIP APPLICATION OR \_\_\_\_ RENEWAL**

Date \_\_\_\_\_ Phone: \_\_\_\_\_ email: \_\_\_\_\_

Applicant \_\_\_\_\_

Applicant/Spouse \_\_\_\_\_

Address \_\_\_\_\_

City \_\_\_\_\_ State \_\_\_\_ Zip code \_\_\_\_\_

Signature \_\_\_\_\_ Are you of Finnish descent? \_\_\_\_\_

- Annual membership, single, one vote ..... \$50.00
- Annual membership, senior\* or youth\*, one vote ..... \$25.00
- \*Senior, over 65 years, youth under 30 years of age
- Annual membership, couple, two votes ..... \$100.00
- Annual membership, family, one vote ..... \$75.00
- Life membership, one vote ..... \$500.00
- Life membership, senior, one vote (see membership for details)

Amount enclosed \_\_\_\_\_  
Please make check payable to FCA and send to Finnish Center Association,  
Membership, 35200 W. Eight Mile Road, Farmington Hills, MI 48335-5108  
Recommended by: \_\_\_\_\_

**GK Photos**

Glenn Kujansuu  
Photographer  
(248) 436-1276



Weddings - Reunions  
Parties & More  
gkphotos@drysteamart.com  
**10% Discount to FCA members**

**FCA Senior Living**

One and two bedroom rentals  
Convenient, safe and affordable in  
highly desirable Farmington Hills, MI  
Contact us at:  
Tapiola Village (248) 471-3802  
Freedom Square (248) 442-7250  
[www.fcaseniorhousing.org](http://www.fcaseniorhousing.org)



**THAYER-ROCK  
FUNERAL HOME**

33603 Grand River,  
Farmington, MI  
(248) 474-4131  
Paul N. Potti, Director