

Google Earth for Displaying and Calculating Elevation

Google Earth's *Elevation Profile* tool allows you do view elevation data for any path in Google Earth.

Step 1.

Install Google Earth: <http://www.google.com/earth/index.html> Google Earth is a free software program available online.

Step 2.

Create or import a path:

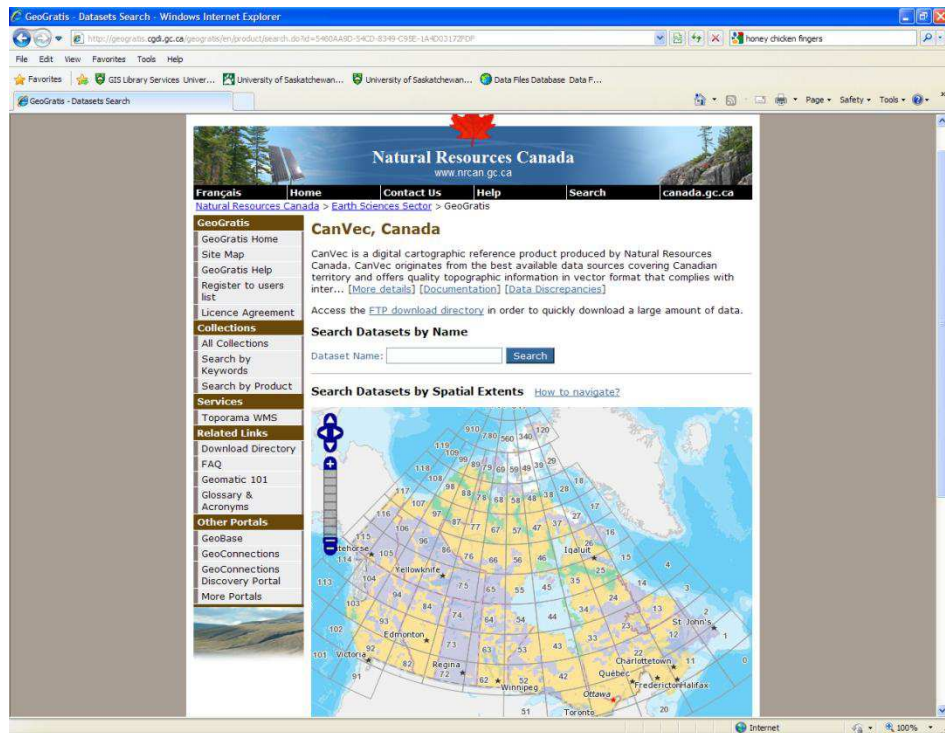
- a) To create a path, click the path button along the top of the screen.



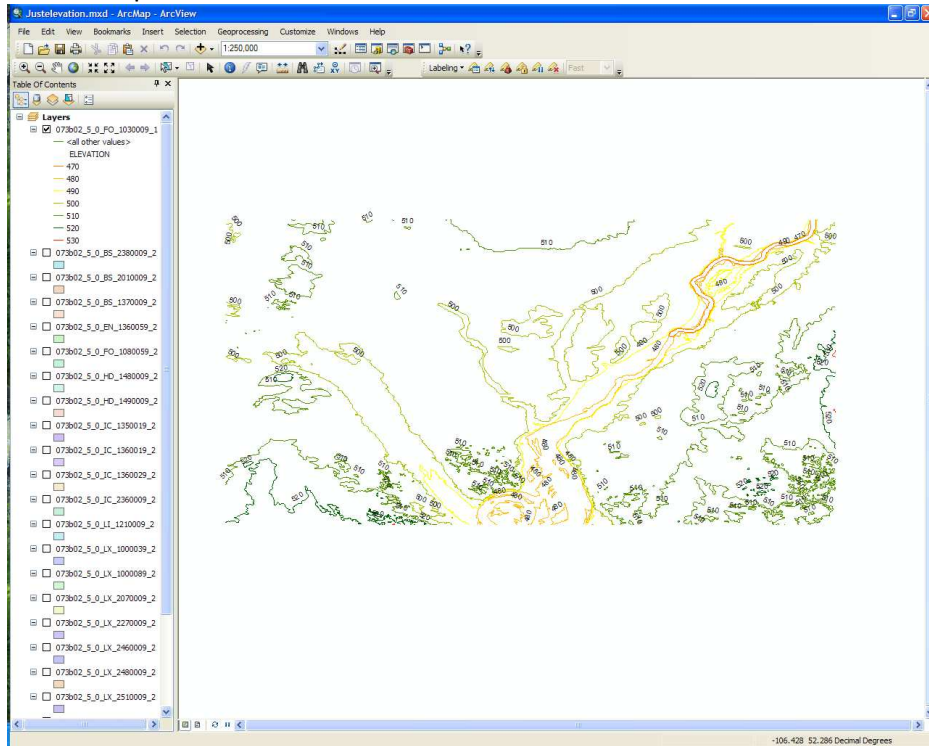
- b) Once the path is drawn, right click on the name of the path and select 'show elevation profile'.

Or

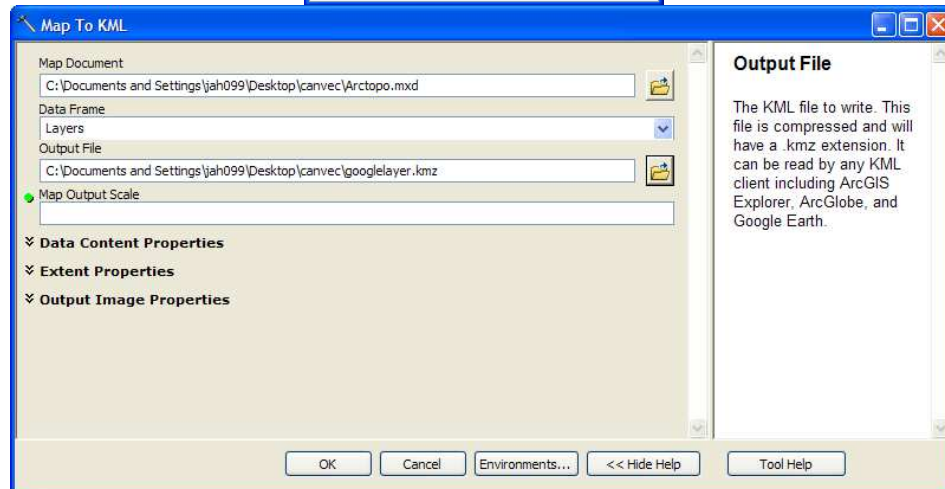
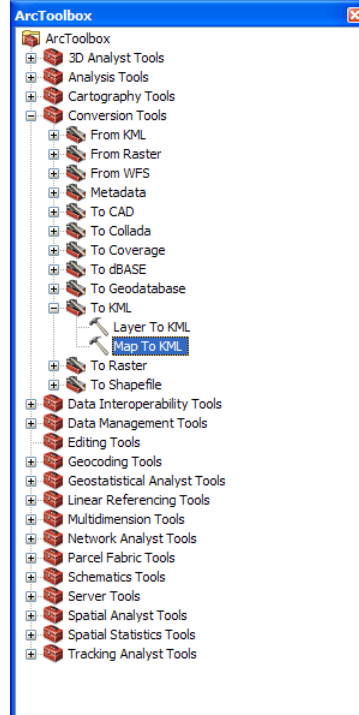
- a) Import data from NRCAN's CanVec. Go to CanVec [website](#) and select the NTS area you would like elevation data for .



b) Import the file as an ESRI shapefile and open in ArcGIS. This screen shot shows just the elevation data from the Shapefile selected.



- c) From ArcToolbox select 'Conversion Tools' and then 'To KML'. Fill in the appropriate information and hit ok.



- d) Once the KML file is saved open in Google Earth. Right click the path and select 'show elevation profile'.

