

**Oracle Insurance**

**Insbridge Rating and  
Underwriting  
SoftRater for JBoss  
Installation Guide**

Release 3.13

December 2009

Copyright © 2005, 2009, Oracle and/or its affiliates. All rights reserved.

Oracle Insurance Insbridge Rating and Underwriting SoftRater for JBoss Installation Guide

Release 3.13

Part # E16309-01

Library # E16330-01

December 2009

Primary Authors: Mary Elizabeth Wiger

This software and related documentation are provided under a license agreement containing restrictions on use and disclosure and are protected by intellectual property laws. Except as expressly permitted in your license agreement or allowed by law, you may not use, copy, reproduce, translate, broadcast, modify, license, transmit, distribute, exhibit, perform, publish, or display any part, in any form, or by any means. Reverse engineering, disassembly, or decompilation of this software, unless required by law for interoperability, is prohibited.

The information contained herein is subject to change without notice and is not warranted to be error-free. If you find any errors, please report them to us in writing.

If this software or related documentation is delivered to the U.S. Government or anyone licensing it on behalf of the U.S. Government, the following notice is applicable:

#### **U.S. GOVERNMENT RIGHTS**

Programs, software, databases, and related documentation and technical data delivered to U.S. Government customers are "commercial computer software" or "commercial technical data" pursuant to the applicable Federal Acquisition Regulation and agency-specific supplemental regulations. As such, the use, duplication, disclosure, modification, and adaptation shall be subject to the restrictions and license terms set forth in the applicable Government contract, and, to the extent applicable by the terms of the Government contract, the additional rights set forth in FAR 52.227-19, Commercial Computer Software License (December 2007). Oracle USA, Inc., 500 Oracle Parkway, Redwood City, CA 94065.

This software is developed for general use in a variety of information management applications. It is not developed or intended for use in any inherently dangerous applications, including applications which may create a risk of personal injury. If you use this software in dangerous applications, then you shall be responsible to take all appropriate fail-safe, backup, redundancy, and other measures to ensure the safe use of this software. Oracle Corporation and its affiliates disclaim any liability for any damages caused by use of this software in dangerous applications.

Oracle is a registered trademark of Oracle Corporation and/or its affiliates. Other names may be trademarks of their respective owners.

This software and documentation may provide access to or information on content, products, and services from third parties. Oracle Corporation and its affiliates are not responsible for and expressly disclaim all warranties of any kind with respect to third-party content, products, and services. Oracle Corporation and its affiliates will not be responsible for any loss, costs, or damages incurred due to your access to or use of third-party content, products, or services.

Where an Oracle offering includes third party content or software, we may be required to include related notices. For information on third party notices and the software and related documentation in connection with which they need to be included, please contact the attorney from the Development and Strategic Initiatives Legal Group that supports the development team for the Oracle offering. Contact information can be found on the Attorney Contact Chart.

The information contained in this document is for informational sharing purposes only and should be considered in your capacity as a customer advisory board member or pursuant to your beta trial agreement only. It is not a commitment to deliver any material, code, or functionality, and should not be relied upon in making purchasing decisions. The development, release, and timing of any features or functionality described in this document remains at the sole discretion of Oracle.

This document in any form, software or printed matter, contains proprietary information that is the exclusive property of Oracle. Your access to and use of this confidential material is subject to the terms and conditions of your Oracle Software License and Service Agreement, which has been executed and with which you agree to comply. This document and information contained herein may not be disclosed, copied, reproduced, or distributed to anyone outside Oracle without prior written consent of Oracle. This document is not part of your license agreement nor can it be incorporated into any contractual agreement with Oracle or its subsidiaries or affiliates.

# CONTENTS

|                  |   |    |
|------------------|---|----|
|                  | UPGRADE NOTICE FOR VERSION 03.13.00.....                        | IV |
|                  | PREFACE .....   | V  |
|                  | Audience .....  | v  |
|                  | Related Documents .....   | v  |
|                  | Conventions .....   | v  |
|                  | System Requirements.....  | vi |
|                  | E-Delivery.....   | vi |
|                  | Manual History .....  | vi |
| <b>CHAPTER 1</b> |   |    |
|                  | INSTALLATION PROCEDURES .....                                   | 7  |
|                  | Development Notes .....   | 7  |
|                  | Step 3: Creating a New Server Configuration.....                | 8  |
|                  | Step 4: Modifying JBoss Classpath .....                         | 8  |
|                  | Step 5: Editing the JNDI Properties .....                       | 8  |
|                  | Locating the Configuration Files .....                          | 9  |
|                  | Step 6: Installation of Insbridge.Fwk.APP (IBSS_JBoss.ear)..... | 9  |
|                  | Step 7: Starting the JBoss Server.....                          | 9  |
| <b>CHAPTER 2</b> |   |    |
|                  | CREATING A SOFTRATER DATABASE.....                              | 10 |
|                  | Microsoft SQL Server.....                                       | 10 |
|                  | ORACLE .....  | 10 |
|                  | IBM DB2.....  | 11 |
| <b>CHAPTER 3</b> |   |    |
|                  | ACCESSING THE APPLICATION.....                                  | 12 |
| <b>CHAPTER 4</b> |   |    |
|                  | UPGRADING THE APPLICATION .....                                 | 13 |
|                  | UPGRADE NOTICE for Release 03.13.00 .....                       | 13 |
|                  | Upgrading from a Previous Version.....                          | 14 |
| <b>SUPPORT</b>   |   |    |
|                  | CONTACTING SUPPORT.....   | 15 |
|                  | TTY Access to Oracle Support Services .....                     | 15 |
| <b>INDEX</b>     |   |    |
|                  | INDEX .....   | 16 |

## LIST OF FIGURES

|                                      |   |
|--------------------------------------|---|
| FIGURE 1 – JBOSS SERVER FOLDER ..... | 8 |
| FIGURE 2 – JBOSS DEPLOY FOLDER ..... | 9 |

## UPGRADE NOTICE FOR VERSION 03.13.00

This notice is for customers currently running a SoftRater for Java engine Release 3.12 or lower. This includes:

- **SoftRater for WebLogic**
- **SoftRater for WebSphere**
- **SoftRater for JBoss**

Necessary updates have been made to the SoftRater for Java engines. This includes:

- **SoftRater for WebSphere has been updated to SOAP version 1.1.**
- **SoftRater for WebLogic has been updated to SOAP version 1.2.**
- **SoftRater for JBoss has been updated to SOAP version 1.2.**

These changes mean that the WSDLs for the SoftRater for Java engines have been modified. Updated WSDL documents will need to be incorporated into any client calling application that communicates with SoftRater. If upgrades are done to the SoftRater for Java engines without updating the calling applications, the calling application will fail.

**Please update a test environment prior to deploying to production.** Install the .EAR file in a test environment to obtain the WSDL. Update your calling application and then test. When testing is complete, you can upgrade your other environments.

---

**NOTE:** *Customers running a Windows only environment, without a Java component, will not be affected.*

---

These updates are for the 3.13 release of SoftRater for Java engines only.

## PREFACE

Welcome to the *Oracle Insurance Insbridge Rating and Underwriting JBoss Installation Guide*. This guide describes how to install and configure JBoss for SoftRater. SoftRater may be used in conjunction with the Oracle Insurance Insbridge Rating and Underwriting RateManager (RateManager) system to process rating requests or it may stand alone.

The Insbridge SoftRater Server (IBSS) is the container for all Insbridge web components including the SoftRater Engine. All independent Insbridge components will be contained in the IBSS.

## AUDIENCE

This guide is intended for technical personal, such as installers, system administrators and others tasked with configuring SoftRater that would be involved in the maintenance and operation of SoftRater or RateManager. The audience for this guide should have a thorough knowledge of JBoss.

## RELATED DOCUMENTS

For more information, refer to the following Oracle resources:

The Oracle Insurance Insbridge Rating and Underwriting Framework Administrator Guide.

The Oracle Insurance Insbridge Rating and Underwriting SoftRater Server Guide.

You can view these guides in-line at this address:

<http://www.oracle.com/technology/documentation/insurance.html>

## CONVENTIONS

The following text conventions are used in this document:

| Convention             | Description  |
|------------------------|--|
| <b>bold</b>            | Boldface type indicates graphical user interface elements associated with an action.   |
| <i>italic</i>          | Italic type indicates book titles, emphasis, or placeholder variables for which you supply particular values.                          |
| <code>monospace</code> | Monospace type indicates commands within a paragraph, URLs, code in examples, text that appears on the screen, or text that you enter. |

## SYSTEM REQUIREMENTS

For minimum operating system and hardware requirements, please see the Hardware Software requirements guide.

## E-DELIVERY

The Insbridge Rating and Underwriting (IBRU) System is available as a download from the Oracle E-Delivery system. Downloaded files are zipped. Prior to installation, please make sure the source machine(s) where SoftRater for JBoss will be loaded has an unzip utility.

An unzip utility for most platforms is available on the E-Delivery download page.

Documentation from E-Delivery is in PDF format. Prior to installation, please make sure the source machine(s) where SoftRater for JBoss documentation will be loaded has a PDF reader.

Files are downloaded with part numbers as file names. Please make note of the part numbers you have downloaded and the corresponding file name. You may be asked to provide the part numbers or the filename if you contact Oracle Insurance Support.

The SoftRater for JBoss version 3.13.0 zip file will contain:

- The 3.13.0-insbridge-jboss-eng Folder, which contains:
  - IBSS\_JBoss.ear file
  - Insbridge.net.softmaterconfig.xml

No license file is required.

If you are using Insbridge Framework Administrator and RateManager, SoftRater can be installed any time after the Insbridge Framework Administrator and RateManager have been installed. SoftRater must be installed prior to any users creating packages.

## Manual History

New editions incorporate any updates issued since the previous edition.

| <b>Edition</b>          | <b>Publication Number</b> | <b>Product Version</b> | <b>Publication Date</b> | <b>Comment</b>  |
|-------------------------|---------------------------|------------------------|-------------------------|-----------------|
| 1 <sup>st</sup> Edition | P01-773-01                | V 3.11.01              | December 2008           | Initial release |
| 2 <sup>nd</sup> Edition | P01-773-02                | V 3.12.0               | July 2009               | Update Version  |
| 3 <sup>rd</sup> Edition | P01-773-03                | V 3.13.0               | December 2009           | Update to 3.13  |

# INSTALLATION PROCEDURES

The following is a quick list of the installation steps needed to perform a NEW SoftRater for JBoss Installation:

1. Install (decompress) JBoss 4.2.3 version on target server.
2. Start the default server. If there are any error messages, please correct them before continuing.
3. Go to <JBoss\_Folder>/server and create a copy of the default server (default folder) and rename it to SR\_Server.
4. Delete the Jaxen.jar file from <JBoss\_Folder>/server/SR\_Server/lib/ and replace it using JDOM\_1.1/Jaxen-Core.jar (This file can be downloaded from the following URL: <http://www.jdom.org/dist/binary/>).

Note: This modification allows the application to run, if this step is not executed the application will hang without reporting any errors.

5. Edit the file "JNDI.properties" located on <JBoss\_Folder>/server/SR\_Server/conf/ and add the following value to the end of the file:

INSBRIDGE\_APP\_DIR=<Path\_Of\_Configuration\_File>

6. Copy the provided IBSS\_JBoss.ear file to <JBoss\_Folder>/server/SR\_Server/deploy/
7. Start SR\_Server and test the application using the following URL: <http://<ServerName>:8080/IBSS>

## Development Notes

Please be aware of the following items:

1. SoftRater for JBoss has been tested and certified on:

**Version:** 4.2.3.GA (build: SVNTag=JBoss\_4\_2\_3\_GA date=200807181418)

**Version Name:** Trinity

**Built on:** July 18 2008

Go to the JBoss server web-console to verify the version.

2. Please be aware that the deployment the EAR name will not be altered from release to release. JBoss adds the EAR filename as part of the EJB objects on deployment.

I.E. on JBoss EJB JNDI names are: "IBSS/SoftRaterEJB/local" and "IBSS/SoftRaterEJB/remote"



3. It is suggested that you use **JDK 1.5** with JBoss 4.2.3GA. You can find the download for JDK 1.5 from Sun's website: <http://java.sun.com/javase/downloads/5/jdk>.

### Step 3: Creating a New Server Configuration

To create a new server configuration go to “<JBoss\_Installation\_H>/server”, copy the default folder, and rename it to “SR\_Server”.

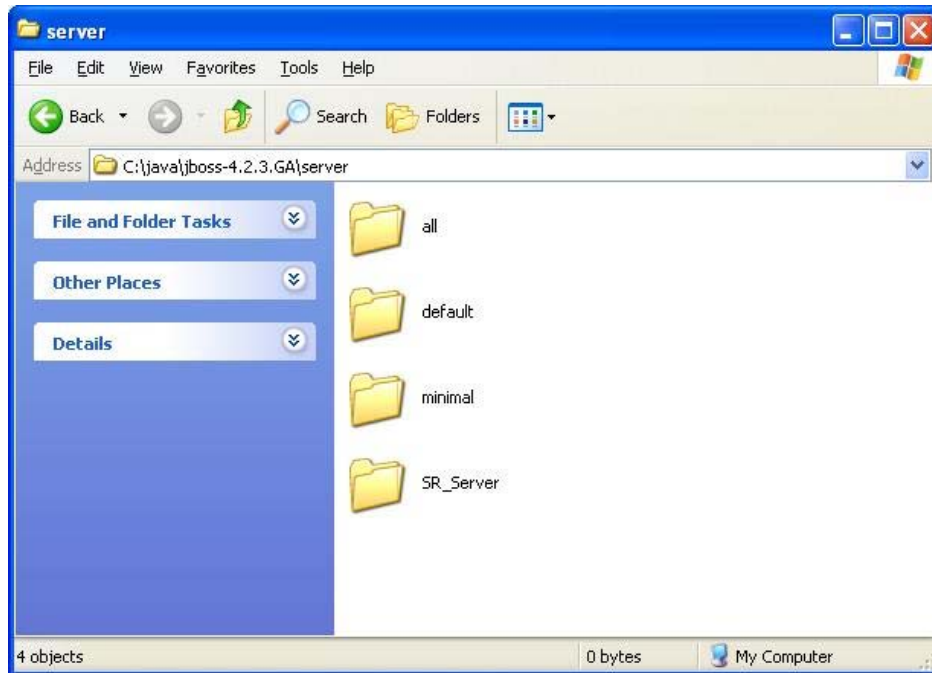


Figure 1 – JBoss Server Folder

### Step 4: Modifying JBoss Classpath

In order to successfully run the SoftRater application you'll need to make the following modification to the JBoss server classpath:

- Delete Jaxen.jar file from <JBoss\_Installation\_Home>/server/SR\_Server/lib/ folder and copy to this same location the Jaxen-Core.jar, this file can be downloaded as part of JDOM 1.1 dependencies.

### Step 5: Editing the JNDI Properties

To create a new JNDI property go to “<JBoss\_Installation\_Home>/SR\_Server/conf” folder and edit the “jndi.properties” file. This modification allows the application to run, if this step is not executed the application will hang without reporting any errors.

The file should look like this:

```
# DO NOT EDIT THIS FILE UNLESS YOU KNOW WHAT YOU ARE DOING
```

```
#
java.naming.factory.initial=org.jnp.interfaces.NamingContextFactory
java.naming.factory.url.pkgs=org.jboss.naming:org.jnp.interfaces

INSBRIDGE_APP_DIR=<Path_Of_Configuration_File>
insbridge.net.softtraterconfig.xml
```

## Locating the Configuration Files

You will need to verify that the application configuration file exists on the path specified:

- insbridge.net.softtraterconfig.xml

## Step 6: Installation of Insbridge.Fwk.APP (IBSS\_JBoss.ear)

Deploying the IBSS\_JBoss.ear file on JBoss is a one step procedure, copy the provided file (IBSS\_JBoss.ear) to the following location: “<JBoss\_Installation\_Home>/server/SR\_Server/deploy”

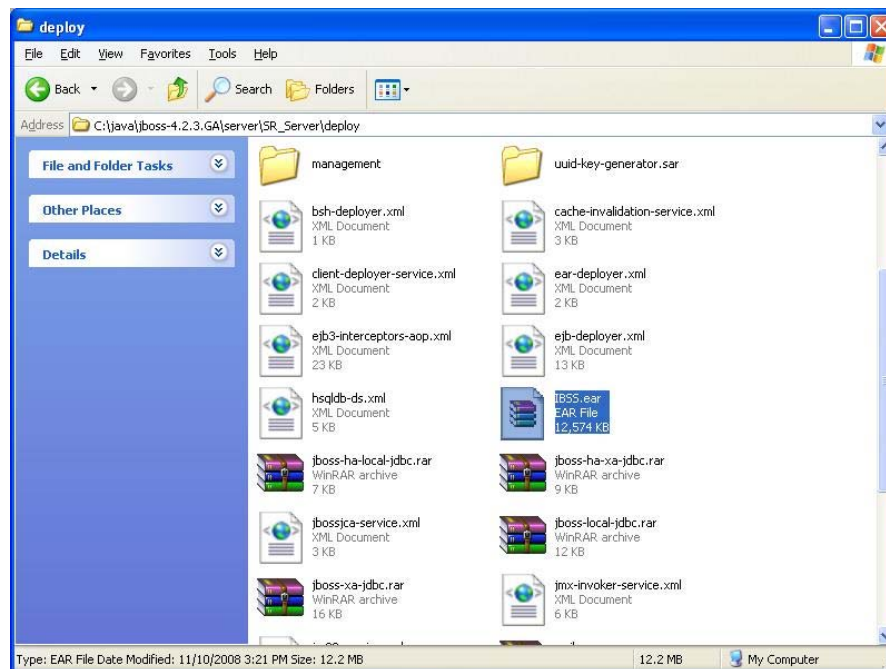


Figure 2 – JBoss Deploy Folder

## Step 7: Starting the JBoss Server

To start the JBoss server open a console (Windows) or shell (Linux) and access the <JBoss\_Installation\_Home>/bin folder, on this location type the following command:

```
Windows:
Run -c SR_Server -b <Host_IP_Address>
Linux:
Run.sh -c SR_Server -b <Host_IP_Address>
```

# CREATING A SOFTRATER DATABASE

The Insbridge Framework Application container for the SoftRater J2EE EJB contains the JDBC connection drivers that support operational connectivity to the DBMS system listed before. It also contains vendor specific DDLs for the SoftRater operations database schema creation which can be altered by DBA's for setup compliance for varying corporate environments, i.e. TABLESPACE and SCHEMA target definitions.

To obtain Database Definition Language (DDL) scripts for a target DBMS type view the "SoftRater\DDL" subdirectory in the Insbridge IBFA installation directory.

i.e. C:\Program Files\Oracle\IGBU\Insbridge\SoftRater\DDL

Please allow the DBA to review the scripts before attempting to create a SoftRater database schema.

The SoftRater EJB data access system contains all the required JDBC drivers for connectivity to the support DBMS's. TCP/IP connection visibility to the DB Platform is required along with the database server system configured connection PORT for operational use of the SoftRater system. No other supplemental drivers or libraries are needed to establish a connection.

---

**IMPORTANT:** *It is strongly recommended that any database modification be performed by a qualified database administrator (DBA). The database setup procedures and tasks require the skill set of a database administrator. If you are not a database administrator, please stop. Improper setup may result in unwelcome changes to the database. Please consult with a qualified database administrator before proceeding.*

---

## Microsoft SQL Server

### JDBC Driver Class

"com.microsoft.jdbc.sqlserver.SQLServerDriver"

### Supported Version - 2005 SP2

### User Account Requirements

Create Table  
Create Index  
Execute on the SoftRater User Defined Stored Procedures

## ORACLE

SoftRater database schema is support by all available ORACLE database platforms.

### JDBC Driver Class

"oracle.jdbc.driver.OracleDriver"  
Using prefix jdbc:oracle:thin:

### Supported Version – 9, 10

## User Account Requirements

Create Table  
Create Index  
Query access to “SYS.OBJ\$”

## IBM DB2

SoftRater database schema is supported on all available DB2 database platforms.

### JDBC Driver Class

“com.ibm.db2.jcc.DB2Driver”  
For Native AS400 – “com.ibm.as400.access.AS400JDBCDriver”

### Supported Version – 8

## User Account Requirements

Create Table  
Create Index  
Query access to “SYSIBM.SYSTABLES”

## Configuration Settings

- **Required**  
The query dynamics of the SoftRater system requires some modification to Configuration settings. The following Performance Configurations parameters required to the target SoftRater database.  
Instance Level – ASLHEAPSZ >= 1024  
Instance Level – QUERY\_HEAP\_SZ => 10240  
Database Level – APPLHEAPSZ >= 1024
- **Recommended**  
The query dynamics of the SoftRater system will benefit from the following modification to Configuration settings.  
  
Instance Level – INTRA\_PARRALLEL (Yes) – For Symmetrical Processing Machines (CPU >=2)  
  
Database Level – DFT\_DEGREE (-1) – For Symmetrical Processing Machines (CPU >=2). Allow the optimizer to determine the degree of intra-partition parallelism based on the number of processors and the type of query.

## Native z/OS

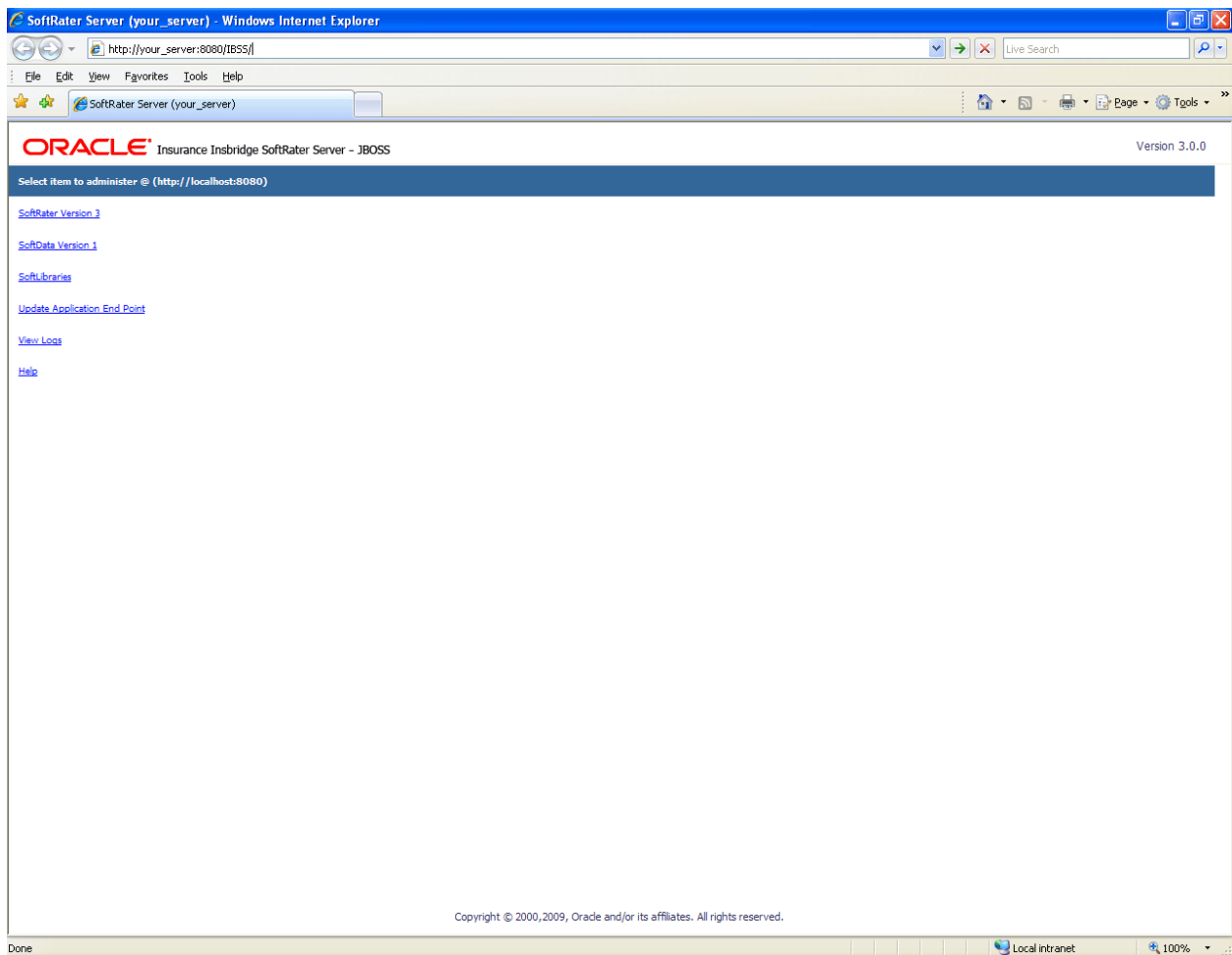
Support for IBM DB2 for native z/OS requires a specific set of the DDL scripts. They are labeled in the ddl\db2 directory with the ZOS DB2.ZOS prefix. DBA's should review these scripts, starting with the DB2.ZOS.SETUP.sql file that contains create templates for default; STORAGE GROUP, DATABASE, default TABLESPACE. All other table create scripts can be reviewed, altered and executed in any other to be consistent with chosen database standards.

## Chapter 3

---

# ACCESSING THE APPLICATION

You will be able to access the application by typing <http://<ServerName or IP Address>:8080/IBSS>



---

**NOTE:** If you changed the JBoss default port (8080) during the Server creation, you should change the default application port on the “[Update Application End Point](#)” option located in the IBSS main page before accessing the application WebServices and methods.

---

---

**NOTE:** The IBSS parameter in the application URL must be capitalized.

---

# UPGRADING THE APPLICATION

Version 3.13 of Insbridge will be certified on JBoss 4.2.3GA.

## UPGRADE NOTICE for Release 03.13.00

This notice is for customers currently running a SoftRater for Java engine release 3.12 or lower. This includes:

- **SoftRater for WebLogic**
- **SoftRater for WebSphere**
- **SoftRater for JBoss**

Necessary updates have been made to the SoftRater for Java engines:

- **SoftRater for WebSphere has been updated to SOAP version 1.1.**
- **SoftRater for WebLogic has been updated to SOAP version 1.2.**
- **SoftRater for JBoss has been updated to SOAP version 1.2.**

These changes mean that the WSDLs for the SoftRater for Java engines have been modified. Updated WSDL documents will need to be incorporated into any client calling application that communicates with SoftRater. If upgrades are done to the SoftRater for Java engines without updating the calling applications, the calling application will fail.

**Please update a test environment prior to deploying to production.** Install the .EAR file in a test environment to obtain the WSDL. Update your calling application and then test again. When testing is complete, you can upgrade your other environments.

---

**NOTE:** *Customers running a Windows only environment, without a Java component, will not be affected.*

---

These updates are for the SoftRater for Java engines 3.13 release only.

## UPGRADING FROM A PREVIOUS VERSION

Upgrading from any previous release to 3.13 will require the previous .EAR and config files to be removed. The new .EAR file can then be deployed and the new config file must be implemented.

WSDLs have been updated in this release. Any application making a call to SoftRater will need to be updated with the new WSDL. If upgrades are done to SoftRater for JBoss without updating the calling application, the calling application will fail.

---

**NOTE: UPGRADE YOUR TEST ENVIRONMENT PRIOR TO PRODUCTION.**

---

1. Make a back-up copy of the current config file. The configuration information will need to be re-entered in IBSS. The updated config file will not contain this information. This information cannot be directly imported but a copy of the original file may be helpful when re-entering.
2. Stop the JBoss Service.
3. Delete the old .EAR file from the JBoss deployment directory. ie:  
<JBoss\_Installation\_Home>/server/SR\_Server/deploy/
4. Remove the old config file. Go to "<JBoss\_Installation\_Home>/SR\_Server/conf" folder and look the "jndi.properties" file. The configuration file information should be located here.
5. Install the new .EAR file. Copy the IBSS\_JBoss.ear file to the following location:  
<JBoss\_Installation\_Home>/server/SR\_Server/deploy.
6. Start the JBoss Service.
7. Enter IBSS. You will need to re-enter the config information. Please see the Insbridge Rating and Underwriting SoftRater Server Guide.
8. If necessary, obtain any WSDL information from IBSS and update any calling application.
9. Test your configuration and updated calling applications before deploying to production.

## CONTACTING SUPPORT

If you need assistance with an Oracle Insurance Insbridge Rating and Underwriting System product, please log a Service Request using My Oracle Support at <https://support.oracle.com/>.

### Address any additional inquiries to:

**Oracle Corporation**  
World Headquarters  
500 Oracle Parkway  
Redwood Shores, CA 94065  
U.S.A.

Worldwide Inquiries:  
Phone: +1.650.506.7000  
Fax: +1.650.506.7200  
[oracle.com](http://oracle.com)

## TTY ACCESS TO ORACLE SUPPORT SERVICES

Oracle provides dedicated Text Telephone (TTY) access to Oracle Support Services within the United States of America 24 hours a day, seven days a week. For TTY support, call 800.446.2398.



## INDEX

.

.EAR File  
  Naming, 7

### C

config/ddl subdirectory, 10  
Configuration Settings  
  DB2, 11  
  DB2 Modifications, 11  
Creating  
  New JNDI Property, 8  
  New Server Configuration, 8

### D

Database  
  IBM DB2 Support, 11  
  MS SQL Support, 10  
  ORACLE Support, 10  
  SoftRater, 10  
Database Definition Language Scripts, 10  
DB2  
  zOS, 11  
DB2 Database  
  Configuration Settings, 11  
  JDBC Driver Class, 11  
  Recommendations, 11  
  SoftRater Database Schema, 11  
  Supported Version, 11  
  User Account Requirements, 11  
DBA, 10  
DBMS, 10  
DDL, 10  
DDL scripts  
  zOS on DB2, 11  
ddl\db2 Directory, 11  
Deploying IBSS.ear, 9  
Directory  
  ddl\db2, 11

### E

Edition Notice, 2

### I

IBRU, vi  
IBSS, v  
IBSS.ear  
  Deploying, 9  
Insbridge SoftRater Server, v

### J

*JBoss Port*  
  8080, 12  
JBoss Server  
  Starting, 9  
JBoss server classpath  
  Modifying, 8  
JDBC Connection Drivers, 10  
JNDI Property  
  Create New, 8

### M

Modifying  
  JBoss server classpath, 8

### N

Naming.EAR File, 7

### O

ORACLE  
  SoftRater Database Schema, 10  
ORACLE Database  
  JDBC Driver Class, 10  
  Supported Version, 10  
  User Account Requirements, 10

### P

Performance Configurations Parameters  
  SoftRater Database, 11

### Q

Quick List, 7

### R

Requirements  
  DB2 Database, 11  
  ORACLE Database, 10  
  SoftRater EJB Data Access System, 10  
  SQL Server, 10  
  TCP/IP Connection, 10

### S

Scripts  
  Database Definition Language, 10  
  Server Configuration

- Create New, 8
- SoftRater
  - Supported Databases, 10, 11
- SoftRater Database, 10
- SQL Server
  - JDBC Driver Class, 10
  - SoftRater Database Schema, 10
  - Supported Version, 10
  - User Account Requirements, 10

## T

- TCP/IP Connection

- To DB Platform, 10

## W

- WebSphere
  - Viewing in Installation Directory, 10

## Z

- z/OS
  - BD2, 11
- ZOS DB2.ZOS, 11