

DUNBAR

SLOANE
WELLINGTON

FINE & APPLIED ARTS AUCTION

17 & 18 NOVEMBER 2010



AUCTION SCHEDULE

NEW ZEALAND & INTERNATIONAL FINE ART

PART ONE

Lots 1 - 116
Wednesday 17 November 2010 • 6pm start

PART TWO

Lots 180 - 518
Thursday 18 November 2010 • 12 noon start

APPLIED ARTS, STUDIO POTTERY & TEXTILES

Lots A1 - A203
Thursday 18 November 2010 • 5pm start

VIEWING

Sunday	14 November	1pm - 4pm
Monday	15 November	9am - 5pm
Tuesday	16 November	9am - 5pm
Wednesday	17 November	9am - 4pm

ENQUIRIES

7 Maginnity Street
PO Box 224, Wellington 6140
PH (04) 472 1367 • FAX (04) 475 7389
info@dunbarsloane.co.nz
www.dunbarsloane.co.nz

COVER Illustration

22 **Charles Frederick Goldie**, *Whiripine Ninia, A Ngati Awa Chieftainess*
Oil on canvas, 37 x 29cm
\$140,000 – 170,000

INSIDE COVER Illustration

11 **Charles Frederick Goldie**, *A Portrait of a Maori Chieftainess*
Ngaheke or Perira te Kahikura
Oil on canvas, 24.7 x 19cm
\$170,000 – 200,000

REAR COVER Illustration

40 **Charles Frederick Goldie**, *Tamati Pehiriri Te Ratawa, a Chief of Ngapuhi*
Red chalk/conté on paper
24.5 x 19cm
\$20,000 – 30,000

PART ONE

NEW ZEALAND AND INTERNATIONAL FINE ART

Lots 1 - 116

Wednesday 17 November 2010

6pm start



ILLUSTRATED

25 Ralph Hotere
Towards Aramoana Black
Window
Oil on paper
Signed, entitled & dated '81
56 x 38cm
\$28,000 – 40,000

PLEASE NOTE

• Pre sale estimates are included as a general guide only and are prepared well in advance of the sale. All lots, depending on the degree of competition, can realise prices above or below estimates. Please consult Dunbar Sloane staff before the auction commences for updated estimates.

• Buyers are reminded that there is a 14% buyer premium plus GST, effectively adding 16.10% to the total cost on the hammer.

• For items \$1,000 and over if you cannot attend the auction you may bid by phone, however we presume you have already inspected the item or received a condition report. Please note we accept no responsibility if for any reason we are unable to contact you during the auction. We also accept postal bids.



1

1 Blythe Fletcher (1890 – 1949)

Riverside cottages, British landscape

Watercolour

Signed & dated '20

42 x 42cm

\$800 – 1,500

See illustration

The above work and following four works have been recently repatriated from the USA where the vendor took them over 25 years ago, the unframed works may never have been seen before and have never been sold at auction before.

2 Blythe Fletcher

North African Port with Dhows

Watercolour

Signed and dated

36 x 27cm

\$500 – 1,000

See illustration



2

3 Blythe Fletcher

North African Market Square

Gouache

Signed & dated '30

39 x 57.5cm unframed

\$800 – 1,500

See illustration

4 Blythe Fletcher

North African/Egyptian Street Scene

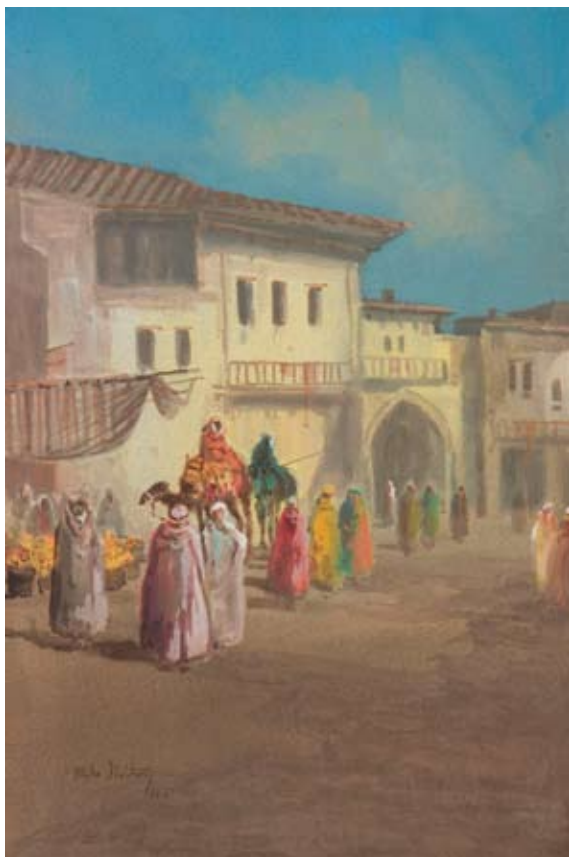
Gouache

Signed & dated '30

72.5 x 48.5cm

\$800 – 1,500

See illustration



3



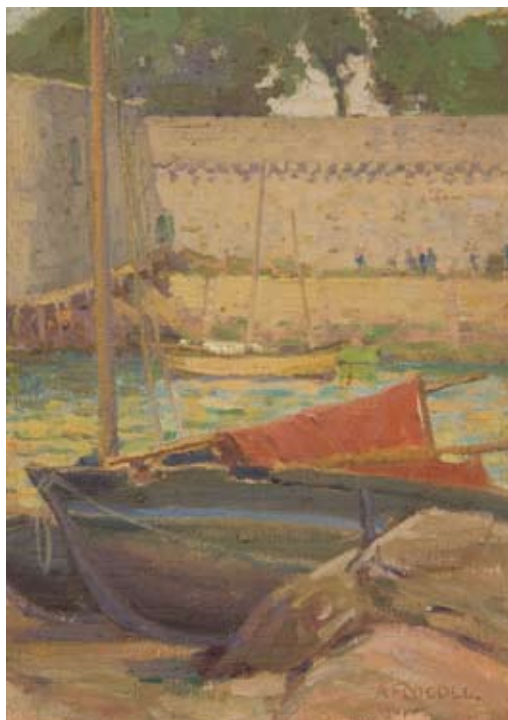
4



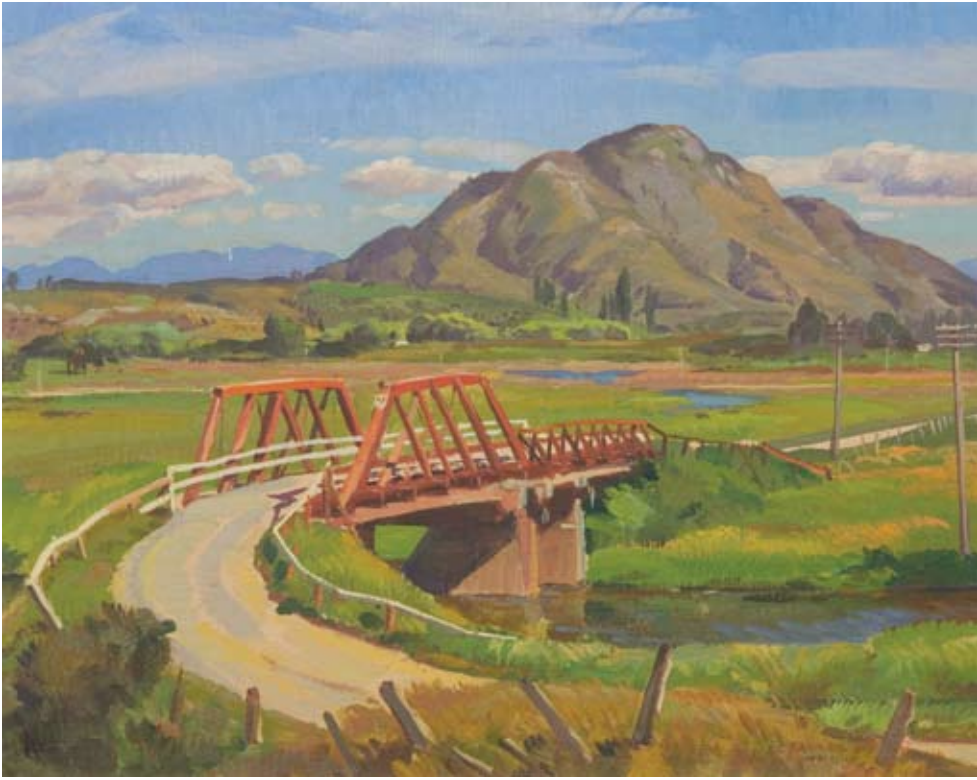
5

- 5** **Blythe Fletcher**
Flemish Coastal View with fishing vessels
 Gouache
 Signed & dated '30
 48 x 76.5cm
 \$800 – 1,500
 See illustration

- 6** **Archibald Nicoll**
Harbour Scene
 Oil on board
 Signed lower right
 39.5 x 28.5cm
 \$1,000 – 2,000
 See illustration



6



7

- 7 Cedric Savage**
Rural road with bridge
 Oil on board
 Signed lower right
 37 x 47cm
 \$1,800 – 2,500
 See illustration

- 8 Christopher Perkins**
Chateau at Lakefront
 Oil on canvas
 Initialed, signed and dated 1936 lower right
 48 x 58.5cm
 \$4,000 – 6,500
 See Illustration



8



9

9 Colin Wheeler

Country Store

Oil on board

Signed & dated 1958 lower left

The artist said in a letter to the current owner that the subject is the store at Enfield, about 12 miles inland from Oamaru, which is now a tavern.

52 x 67cm

\$15,000 – 20,000

See illustration

10 A. A. Deans (Alistair Austen)

Nor-Wester over the Rangitata

Watercolour

Signed & dated 1970 lower left

52 x 73cm

\$10,000 – 10,000

See illustration



10



11 Charles Frederick Goldie

A Portrait of a Maori Chieftainess

Ngaheke or Perira te Kahikura

Also known as *The Widow*

Oil on canvas, original artist's black frame

Signed and dated with brush point, top left, C.F. Goldie 1915

24.7 x 19cm

\$170,000 – 200,000

See illustration

Copy on the back 'Portrait of a Maori woman wearing a flax cloak with chin and lower lip tattooed and with two huia feathers in her hair and wearing a greenstone Hei Tiki and ear pendant'

Illustration and copy, p236, *C.F. Goldie, His Life and Painting* by Alister Taylor & Jan Glen



12



13

12 Unknown Artist
Early New Zealand Farmstead Scene
 Oil on canvas
 Unsigned
 29 x 44cm
 \$700 – 1,000
 See illustration

13 Unknown Artist
Manning Bros Camp, Taranaki, Bush Study with Figures and Tents
c1890
 Watercolour
 This work is attributed to an English artist working
 with the company at the time
 Inscribed lower left
 17 x 24cm
 \$1,500 – 2,500
 See illustration



14

14 Unknown Artist
Manning Bros Camp, Strathmore, Bush Study with Figures and Large Tent
c1890
 Watercolour
 This work is attributed to an English artist working
 with the company at the time
 Inscribed lower left
 24 x 17cm
 \$1,500 – 2,500
 See illustration



15

15 Edith Stanway Halcombe (attributed)

Extensive coastal landscape of Taranaki with a Pa on the Mimi River in the foreground, Urenui township and Mt Egmont beyond

Oil on board

Unsigned

16.5 x 29cm

\$8,000 – 15,000

See illustration

16 Edward Angus Gifford RA (1819-1894)

Early view of Oamaru harbour

Watercolour

Initialed E.A.G., dated 1883

29 x 70cm

\$4,000-10,000

See illustration

Gifford came to NZ in 1877 spending most of the next twenty years at Oamaru. Prior to this he had won a gold medal at the Royal Academy, worked in Australia and then NZ.



16



17

17 Margaret O. Stoddart
Ducks on the River Avon
Watercolour
Signed lower left
24.5 x 34.5cm
\$10,000 - 15,000
See illustration

18 Margaret O. Stoddart
Summer Beach, Christchurch
Watercolour
Signed lower left
25 x 35cm
\$10,000 – 15,000
See illustration



18



19

19 Maude Burge
Market Day, St Remy Provence
 Watercolour
 Unsigned, certificate of authenticity verso
 33 x 39cm
 \$7,000 – 10,000
 See illustration

20 Maude Burge
Near St Tropez
 Watercolour
 Unsigned, certificate of authenticity verso
 33 x 39cm
 \$7,000 – 10,000
 See illustration



20



21 Frances Hodgkins

The Mill Stream

Watercolour

Unsigned

Provenance – Wertheim Galleries London, whose name appears verso in pencil;
Lefevre Galleries, London from whom purchased by N.L. Hamilton Smith Esq, 1946,
thence by descent.

58 x 46.5cm

\$28,000 – 45,000

See illustration

This painting was painted towards the end of WWII while Hodgkins was living in Corfe Castle. See labels verso.



22 Charles Frederick Goldie

Whiripine Ninia, A Ngati Awa Chieftainess

Oil on canvas

Signed & dated 1915 upper right

Peter Webb Galleries label affixed verso reference 1138/1

37 x 29cm

\$140,000 – 170,000

See illustration

Whiripine was the daughter of Ninia, a prominent Ngati Awa chief of Taranaki who was identified with the wars between Taranaki and Waikato and later the wars between Taranaki and the Europeans.

- 23** **Richard Killeen**
Wish You Were Here
Watercolour
Signed, entitled & dated 2.5.79
53 x 37cm
\$2,000 – 4,000
See illustration



23

- 24** **Dick Frizzell**
Putting it all on the Lion
Gouache on paper
Signed, entitled & dated 12.12.78
59.5 x 41.5cm
\$3,000 – 5,000
See illustration



24



25

Ralph Hotere

Towards Aramoana. Black Window

Oil on paper

Signed, entitled & dated '81

This is the first time this work has been offered for auction having been originally purchased from Napier Museum & Art Gallery in November 1981

56 x 38cm

\$28,000 – 40,000

See illustration

"Black Window Towards Aramoana echoes the dark tones and simple forms of Hotere's minimalist works of the 1970s" Ralph Hotere Black Light, Te Papa Press, p120



26 Michael Illingworth

Man with Red Tie

Oil on hessian

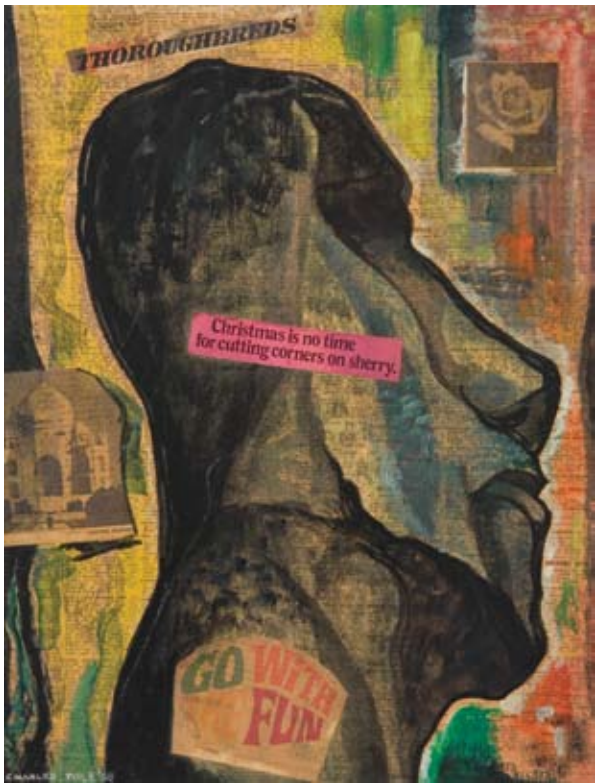
Signed, entitled & dated '69 verso

Exhibited: A Tourist in Paradise Lost – The Art of Michael Illingworth, City Gallery, Wellington 2001

71 x 61cm

\$70,000 – 90,000

See illustration



27

27 Charles Tole

Collage

Collage with acrylic on hardboard

Signed and dated '68, artist's label verso

39 x 30cm

\$2,000 – 4,000

See illustration

28 Terry Stringer

Sculpted Head and Scarf on Table

Oil on tin

Signed and dated '81

45 x 60cm

\$6,000 – 10,000

See illustration



28

29 Sara Hughes

Untitled

Acrylic on Clear Perspex

Unsigned

85 x 22 x 6cm

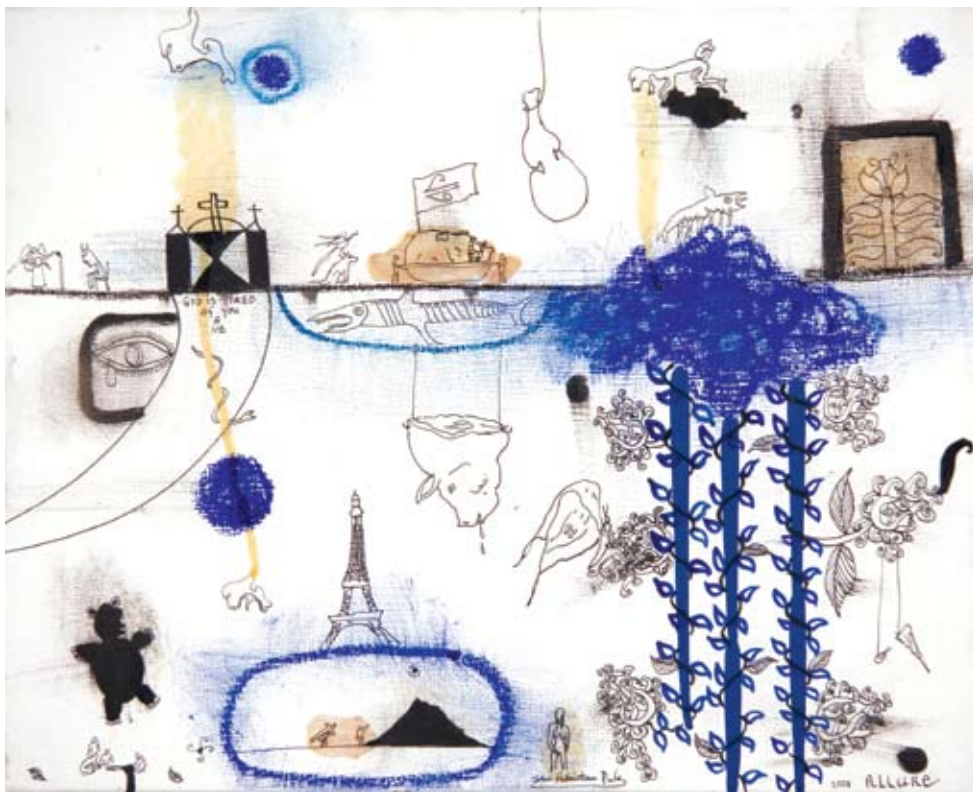
\$1,000 – 2,000

Note – repaired damage to upper right corner

See illustration - photographed on black



29



30

30 John Pule
Allure
 Oil and ink on paper
 Signed lower centre, entitled & dated 2008 lower right
 40 x 51cm
 \$5,000 – 8,000
 See illustration

31 Allen Maddox
Untitled, 1986
 Oil on canvas
 Initialed & dated 4.86 lower right
 91 x 66cm
 \$10,000 – 15,000
 See illustration

32 Allen Maddox
Humble Saltire of St Alban
 Watercolour on paper
 Initialed, entitled & dated 24.10.88 lower right
 42 x 29cm
 \$1,400 – 2,400
 See illustration



31



32



33



35



34



36

- 33 Tony de Lautour**
Silent Command
 Work on paper
 Signed, entitled and dated 2004
 39.5 x 50.5cm
 \$1,500 – 2,500
 See illustration

- 35 Kura Te Waru Rewiri**
Partner 1 (B)
 Acrylic on canvas
 Signed, entitled & dated 07/03 on stretcher
 30.5 x 30.5cm
 \$1,500 – 2,500
 See illustration

- 34 Richard Lewer**
Weather Map 14: 21 August
 Enamel on jute
 Signed verso
 30 x 25cm
 \$1,000 – 1,400
 See illustration

- 36 John Reynolds**
Postscript to a Deeper Science V
 Mixed media on hessian
 Entitled, signed & dated 1988 verso
 27.5 x 28cm
 \$2,000 – 3,000
 See illustration



37 Jenny Dolezel
Theatre of Possibility I
Acrylic on canvas
Signed & entitled lower centre, and also
dated 2009 verso
110 x 150cm
\$13,000 – 18,000
See illustration



38

38 Mountford Toss Will (Toss) Woollaston

Panoramic Landscape (possibly the Grey River)

Oil on board

Unsigned

90 x 120cm

\$30,000 – 40,000

See illustration

39 Michael Smither

Cellist

Oil on board

Signed & dated 1970 verso

49 x 63.5cm

\$10,000 – 15,000

See illustration



39



40 Charles Frederick Goldie

Tamati Pehiri Te Ratawa, a Chief of Ngapuhi

Red chalk/conté on paper

Signed with initials lower right

Provenance: purchased by the vendor from Devereux & Cully, Auckland. Exhibited at Goldie – The Exhibition, 1997, Auckland City Art Gallery, exhibit no. 125

24.5 x 19cm

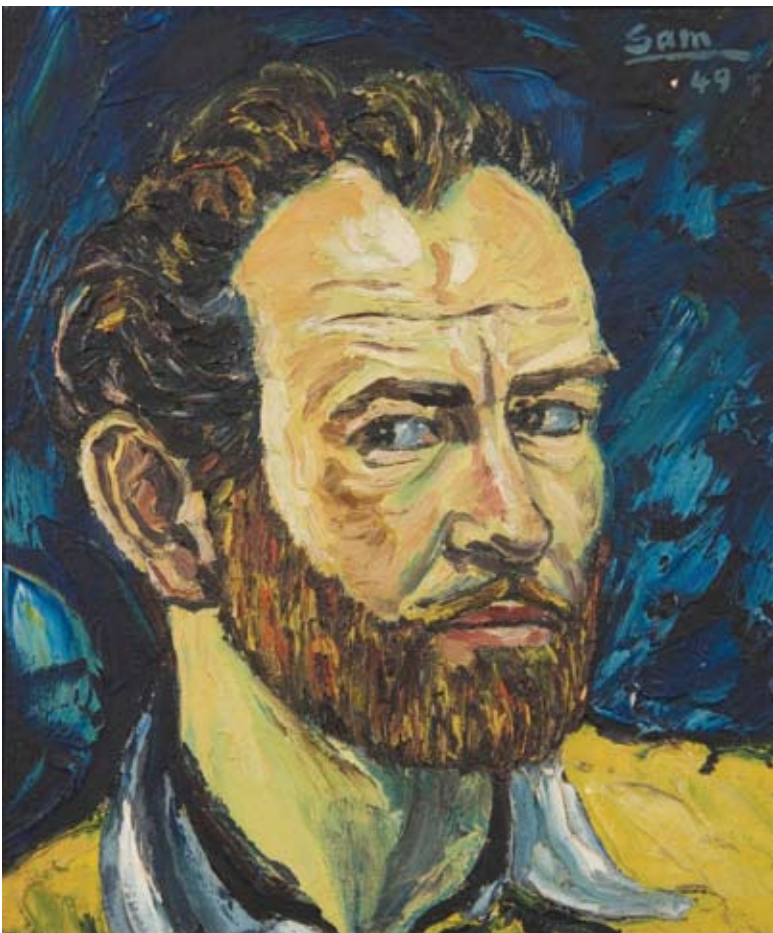
\$20,000 – 30,000

See illustration



41

- 41 Alan Pearson**
Portrait of Tom Russell
Oil on board
Signed, entitled & dated 1975 verso
61 x 61cm
\$6,000 – 10,000
See Illustration



42

- 42 Sam Cairncross**
Self Portrait
Oil on canvas
Signed & dated '49 upper right and
signed, entitled & dated 1949 verso
36 x 30.5cm
\$3,500 – 6,000
See illustration



43



45



44

- 43 Sam Cairncross**
Auckland Landscape
 Oil on board
 Signed lower right, dated 1969 verso
 37 x 49.5cm
 \$1,500 – 2,500
 See illustration

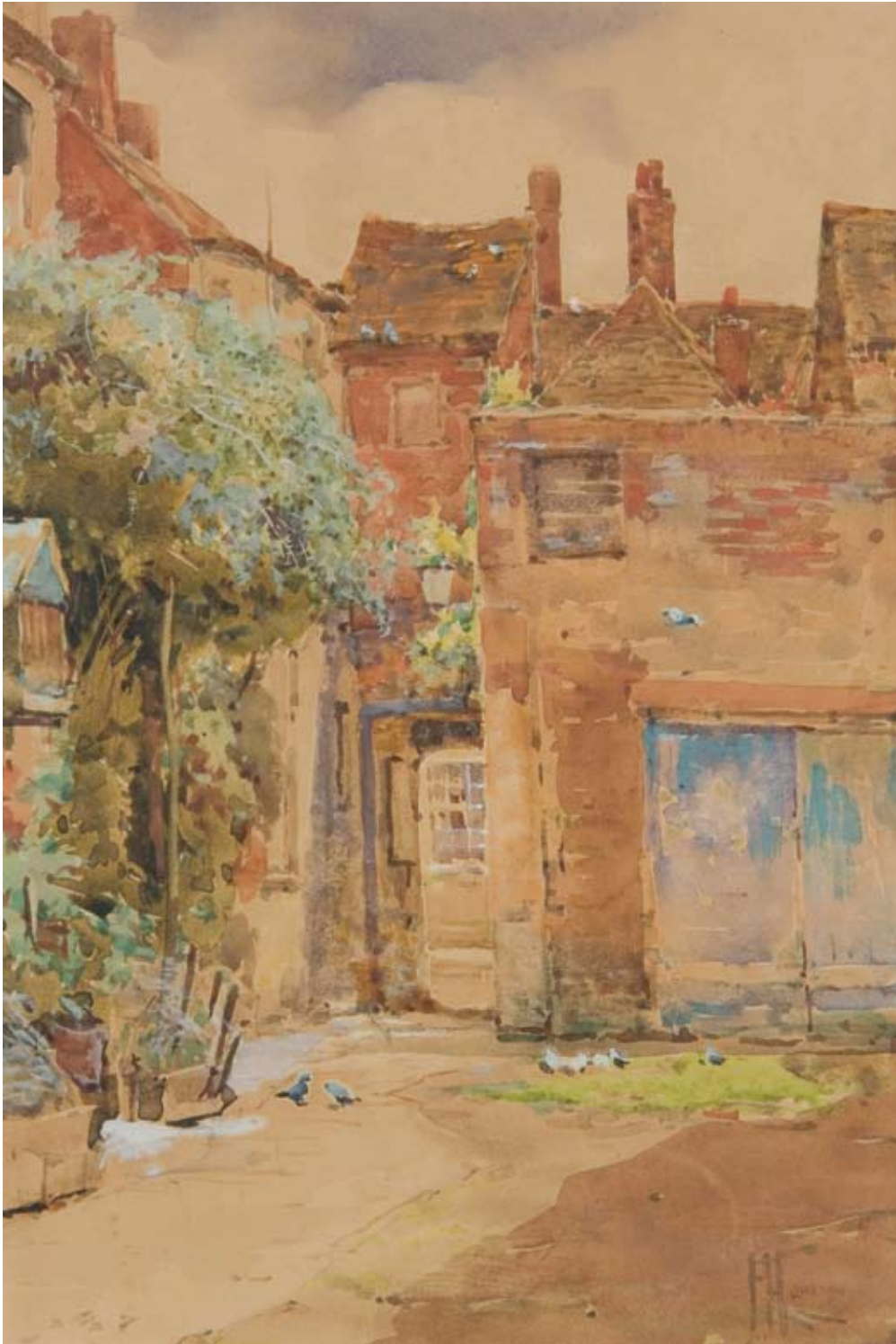
- 44 Sam Cairncross**
Old St Pats College, Wellington
 Oil on board
 Signed lower right
 36 x 49.5cm
 \$2,500 – 5,000
 See illustration

- 45 Sam Cairncross**
Tomatoes and Peppers
 Oil on canvas board
 Signed & dated '72 lower right
 29 x 37cm
 \$1,200 – 2,400
 See illustration



46

- 46 John S. Parker**
Self Portrait
 Acrylic
 Signed lower right
 29 x 20cm
 \$1,750 – 3,500
 See illustration



47 Frances Hodgkins

French countryside courtyard with pigeons

Watercolour

Signed & dated 1914, lower right

24 x 16.5cm

\$12,000 – 24,000

See illustration

Frances Hodgkins spent time in Capri, Siena, Florence and Verona in early 1914. She then travelled on to Paris and other French towns, returning to Somerset, Cornwall and London near the end of 1914.



48



50



49



51

48 Margaret O. Stoddart
Cornwall Coastal Study
 Initialed lower left & dated April 1887
 Watercolour
 24.5 x 34cm
 \$4,500 – 9,000
 See illustration

50 Olivia Spencer Bower
River Landscape
 Watercolour
 Signed lower right
 34 x 56cm
 \$2,500 – 4,000
 See illustration

49 Dorothy Kate Richmond
Riding the Swell, Wellington Harbour
 Watercolour
 Unsigned, authenticity verso
 52.5 x 74.5cm
 \$1,500 – 3,000
 See illustration

51 Olivia Spencer Bower
Waimakariri
 Watercolour
 Signed lower left.
 72 x 52cm
 \$1,750 – 2,750
 See illustration

Provenance: formerly part of the Dorothy Kate Richmond Estate. Upon her death in 1935 it passed into the family possession of Mary Champion and then to the present vendor.

Provenance: Purchased by the vendor directly from the artist's studio.



52

52 Frances Hodgkins
Dunedin Harbour
 Watercolour
 Initialed MFH & dated '93, lower left
 28 x 43cm
 \$8,500 – 12,000
 See illustration

53 Mina Arndt
Cottage
 Watercolour
 Unsigned
 20.5 x 15cm
 \$400 – 800
 See illustration

54 A. Elizabeth Kelly
The Lace Cap
 Watercolour
 Signed lower left
 33 x 24.5cm
 \$1,000 – 2,000
 See illustration



53



54



54

- 55 Robin White**
Florence and Harbour Cone
 Silkscreen print, Ltd ed 16/40
 Signed, entitled & dated 12/1975 upper left
 Illustrated: *Robin White, New Zealand Painter*, Alister
 Taylor Martinborough 1981 p. 58
 70 x 50cm
 \$2,000 – 4,000
 See Illustration

- 56 Robin White**
Hoopers Inlet
 Screenprint, Ltd ed 33/50
 Signed, entitled & dated 11/76
 55 x 69cm
 \$3,000 – 6,000
 See illustration



55



58



57

57 Reuben Paterson

Naturist

Glitterdust screenprint on paper, ltd ed. 23/40
Signed and dated 2005 lower right, entitled lower
centre
70 x 49cm
\$1,000 – 1,600
See illustration



59

59 Max Gimblett

The Large – The Swan of It – Feeling Thru

Screenprint & metallic foil on paper
Monogrammed lower left
57 x 38cm
\$1,400 – 2,400
See illustration

58 Guy Ngan

Untitled

Reflective paint on board
Unsigned
92.5 x 91.5cm
\$3,000 – 6,000
See illustration



60

- 60 Max Gimblett**
Untitled, 1983
 Ink on paper
 Signed & dated 1983 lower right
 109 x 39cm
 \$5,000 – 8,000
 See illustration



61

- 61 Melvin Day**
Orange Proportion
 Mixed media - oil
 Signed & dated '70 upper right
 61 x 61cm
 \$4,000 – 6,500
 See illustration



62

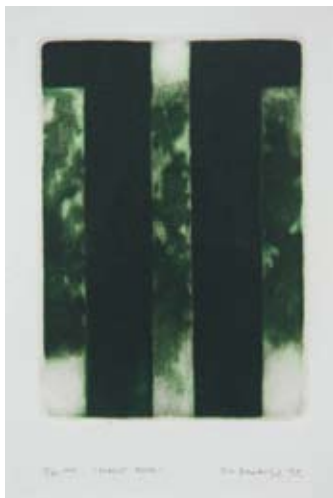
- 62 Melvin Day**
Vision of a Hermit IV
 Mixed media – oil
 Signed & dated '69 lower left
 61 x 61cm
 \$1,000 – 2,000
 See illustration



63



65



64

63 John Drawbridge
Double Portrait
 Lithograph, ltd ed 18/50
 Signed, entitled & dated 1997
 29 x 20cm
 \$800 – 1,200
 See illustration

65 Dennis Knight Turner
No. 6. 1952
 Oil on board
 Signed lower centre, entitled & dated
 1952 lower right
 35.5 x 34cm
 \$1,500 – 3,000
 See illustration

64 John Drawbridge
Forest Door
 Lithograph, ltd ed 19/50
 Signed, entitled & dated '97
 23 x 15cm
 \$600 – 1,000
 See illustration

66 Peter McIntyre
Hong Kong Harbour with boy fishing to the fore
 Pen and ink
 Signed lower right
 48 x 42cm
 \$2,000 – 4,000
 See illustration



66



67

67 Peter McIntyre

Mexico City

Watercolour and ink on paper

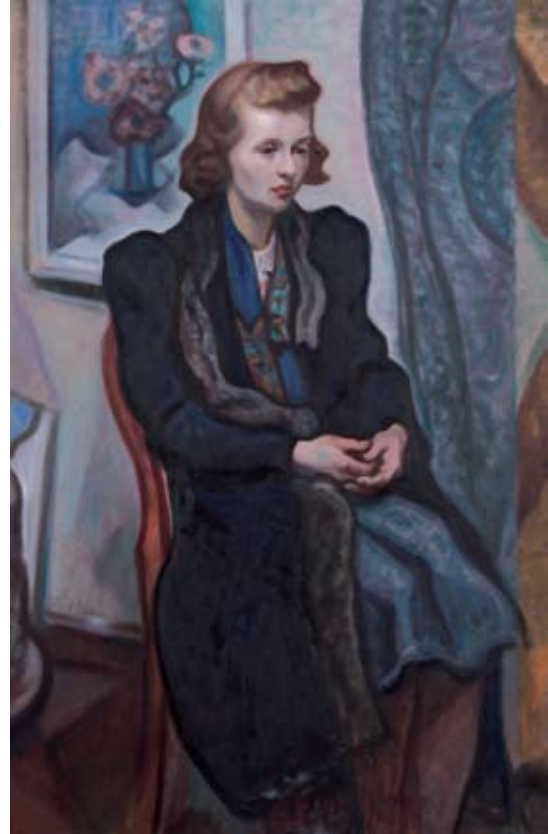
Signed lower right

Illustrated: *Peter McIntyre's Pacific*, A H & A W Reed 1966 plate 15

62 x 53cm

\$3,000 – 6,000

See illustration



68



69

68 Francis McCracken

Portrait of Seated Woman

Oil on canvas board

Unsigned

124 x 80cm

\$5,000 – 7,500

See illustration

69 Francis McCracken

Self Portrait with Paintbrush

Oil on canvas board

Signed lower right

74 x 51cm

\$4,000 – 6,500

See illustration



70 **Gottfried Lindauer**
Ana Rupene with Child c1890
Oil on canvas
Unsigned
75 x 60cm
\$15,000 – 20,000
See illustration



71

71 William G. Baker
Fielding – Palmerston Rd
Oil on canvas
Signed & entitled
59.5 x 89.5cm
\$3,500 – 7,000
See illustration

72 John Barr Clarke Hoyte
Preservation Inlet
Watercolour
Signed lower left
19 x 35cm
\$2,500 – 5,000
See illustration



72



73 John Gully

Lewis Pass

Watercolour

Unsigned, label verso; 'Painted by John Gully as a gift to the Reverend Lewis of the Lewis Pass'

60 x 44.5cm

\$10,000 – 15,000

See illustration



74

74 Alfred H. O'Keefe

Portrait of R.W. Bro. James Gore

Oil on canvas

Signed & dated 1911

Inscribed on brass presentation plaque:
'Presented to R.W. Bro. James Gore D.G.M.
NZ South S.C. Also G.M Grand Lodge of
Scotland, by the Brethren of NZ South S.C.
in recognition of his valued services to
Freemasonry as G.M. from 1889 – 1910,
Dunedin, September 1911'

111 x 85cm

\$3,000 – 5,000

See illustration



75



76



77

75 George O'Brien

At Lake Manapouri

Watercolour

Signed & entitled lower left

22 x 44cm

\$3,000 – 6,000

See illustration

76 Laurence W Wilson

Head of Lake Anau

Watercolour

Signed, entitled & dated 1892

30.5 x 51cm

\$800 – 1,500

See illustration

77 Laurence W Wilson

Lake Mintays, Clinton Valley

Watercolour

Signed & entitled

22.5 x 29.5cm

\$600 – 1,200

See illustration



78



79 pair



80



81

- 78 Laurence W. Wilson**
Portobello, Otago Harbour
 Oil on board
 Signed, entitled and dated 1887 lower left
 27 x 45cm
 \$1,250 – 2,500
 See illustration

- 79 John MacIntosh Madden**
Views of Smith's Sound, West Coast NZ
 Pair of oils
 Signed & dated 1886 & 1887 verso
 14 x 19cm each
 \$1,000 – 2,000
 See illustration

- 80 Bruce Hunt**
St Mary's Range – North Otago
 Acrylic on board
 Signed & dated '86 lower left
 91 x 81cm
 \$800 – 1,200
 See illustration

- 81 Bruce Hunt**
Drifting Cloud, Makara
 Acrylic on board
 Initialled & dated '84
 59 x 44cm
 \$1,000 – 2,000
 See illustration



82



85



83



84

82 Peter O'Hagan
My New Borabora Pareo
 Watercolour & gouache
 Signed & dated '95 lower left
 53 x 54cm
 \$2,500 – 4,000
 See illustration

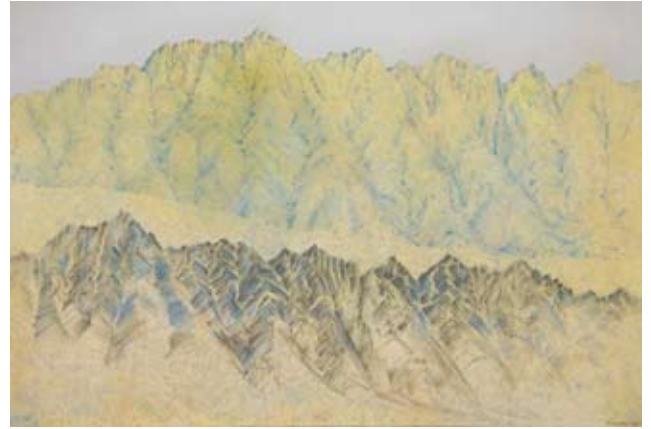
84 Jane Evans
Umbrella II
 Gouache
 Signed & dated '85, entitled verso
 60 x 40cm
 \$800 – 1,200
 See illustration

83 Jane Evans
Mixed Vase on Tablecloth
 Gouache
 Signed lower right, entitled & dated
 '84 verso
 56 x 76cm
 \$2,000 – 4,000
 See illustration

85 Glenda Roberts
Floral Garden
 Acrylic on canvas
 Signed
 130 x 130cm
 \$2,700 – 3,700
 See illustration



86



87



88



89

86 Alison Ryde
It's a Capital City
 Watercolour
 Signed & dated '90
 51 x 73cm
 \$1,200 – 1,600
 See illustration

88 Paul Olds
Otira Gorge
 Oil on canvas
 Signed lower right
 65 x 80cm
 \$800 – 1,600
 See illustration

87 Doris Lusk
Two Aspects, The Remarkables, Queenstown
 Acrylic and pencil on canvas
 Signed, entitled & dated March 1977 verso
 51.5 x 76cm
 \$4,500 – 7,000
 See illustration

89 Tom Esplin
Hill Town
 Oil on board
 Signed lower left
 50 x 62cm
 \$3,000 – 6,000
 See illustration



90



91



94



92



93

90 Justin Summerton

Provocative Art Zone Only

Oil on canvas

Signed & date '10 lower left

42.5 x 37cm

\$3,000 – 4,000

See illustration

92 Shane Cotton

Kikorangi

Lithograph, ltd ed 32/40

Signed & dated 2004 lower right, entitled lower centre

56 x 76cm

\$2,000 – 3,500

See illustration

91 Justin Summerton

Advantage

Oil on canvas

Signed & date '10 lower left

59.5 x 77.5cm

\$3,000 – 4,000

See illustration

93 Shane Cotton

Pararaiha

Lithograph, ltd ed 28/40

Signed & dated 2004 lower right, entitled lower centre

56 x 76cm

\$2,000 – 3,500

See illustration

94 Ralph Hotere

Window in Spain, Madrid

Hand-coloured photocopy mono-print

Initialed, inscribed and dated, Hotere 14. III. 75

32 x 22.5cm

\$1000 – 2000

47.



96



95



97



98

95 See illustration
Darryn George
Tia hinu (oil jar)
 Oil on canvas
 Signed, entitled & dated 2005 verso
 40 x 40cm
 \$2,000 – 3,500
 See illustration

96 **Nigel Brown**
Individual Deprived
 Graphite & pastel on paper
 Signed & dated '71 lower left
 44 x 29cm
 \$800 – 1,000
 See illustration



99



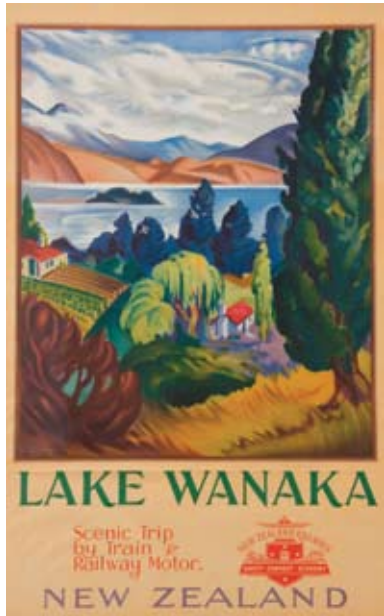
100

97 **Peter Peryer**
Figure Study, 2000
 Digital print, ltd ed. 11/25
 Unsigned
 31 x 39.5cm
 \$1,400 – 2,000
 See illustration

99 **E. Mervyn Taylor**
Portrait of Maori Woman
 Conte on paper
 Signed & dated 1954 lower right
 25.5 x 19.5cm
 \$1,000 – 2,000
 See illustration

98 **Robyn Kahukiwa**
Environmental Product
 Gouache on paper
 Signed & dated 1975
 53 x 74cm
 \$1,500 – 3,000
 See illustration

100 **Leo Bensemman**
Maori
 Woodcut, ltd ed 20/30
 Unsigned, entitled lower left
 38 x 28cm
 \$500 – 1,000
 See illustration



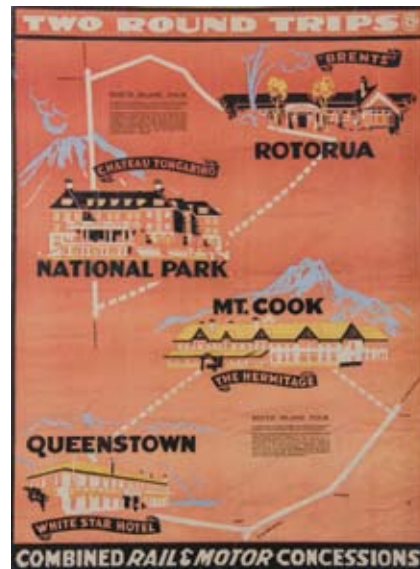
101



103



102



104

POSTERS

101 John Holmwood

Lake Wanaka

Scenic Trip by Train & Railway Motor

Colour lithograph. Printed by NZ Railways Studios

Illustrated: Hamish Thompson, *Paste Up, A Century of New Zealand Poster Art*, Random House 2003 p. 16. Ref 1.3

99 x 62cm

\$1,500 – 3,000

See illustration

103 NZ Railways Studios

Mt Cook, South Island, NZ

World-Famed Tasman Glacier. Take the Train to Timaru

Colour lithograph

88 x 56cm

\$1,500 – 3,000

See illustration

102 NZ Railways Studios

Wonderful Wairakei for Your Holidays.

Well Away from Worry. Easily Reached by Rail & Road Services.

Colour lithograph

85 x 53cm

\$1,500 – 3,000

See illustration

104 NZ Railways Studios

Two Round Trips. Rail & Motor.

Combined Rail & Motor Concessions

Screenprint

Illustrated: Hamish Thompson, *Paste Up, A Century of New Zealand Poster Art*, Random House 2003 p. 18. Ref 1.13

100 x 75cm

\$1,000 – 2,000

See illustration



INTERNATIONAL ART

105 Laurence Stephen Lowry RA (1887-1976)

Norwich, Mensum River Sketch with Barge, Warehouse of R.J. Read Ltd right centre

Charcoal on paper

Signed and dated 1946

27 x 24,5cm

\$30,000 – 40,000

See illustration

Provenance: purchased by the current vendor from Christies in the mid 1980s.



106



108



109



107

106 Jean-Louis Ernest Meissonier (French, 1815-1891)

Zollares Skirmishing by Order of the French

Watercolour

Signed lower left

21 x 30cm

\$2,000 – 4,000

See illustration

107 Alexander Glasgow (British, 1859 – 1884)

The Toreador Before the Fight

Oil on canvas

Signed & dated 1880 lower left

90.5 x 70cm

\$1,500 – 3,000

See illustration

108 E. King (British)

Mallaig Harbour, North Britain

Oil on canvas

Signed lower right

39 x 59cm

\$1,000 – 1,500

See illustration

109 W G Meadows (British, c.1825-1901)

Pastoral Scene with Cows Beside Watering Hole

Oil on canvas

Signed lower left

79.5 x 122cm

\$3,000 – 6,000

See illustration



111



112



110

110 John Glover (attrib. British/Australian, 1767-1849)

Extensive Mountain and Lake Landscape in Tasmania with figures in the foreground

Watercolour

Unsigned

16 x 21.5cm

\$1,000 – 2,000

See illustration

112 Doris Pusinelli (British, 1900-1976)

Portrait study of a lady

Watercolour

Signed lower right

70 x 52.5

\$400 – 800

See illustration

111 G.S. Kensington

Three Female Nude Studies

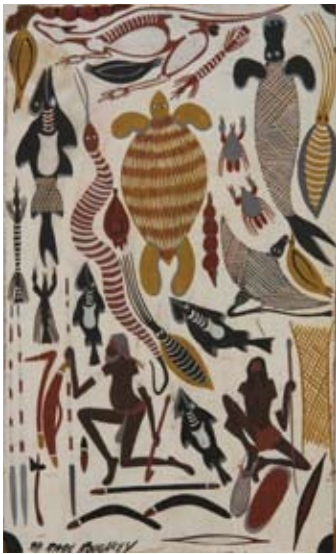
Graphite & conte on paper

One signed & dated November 1861

49 x 32.5cm each in common frame

\$700 - 1,200

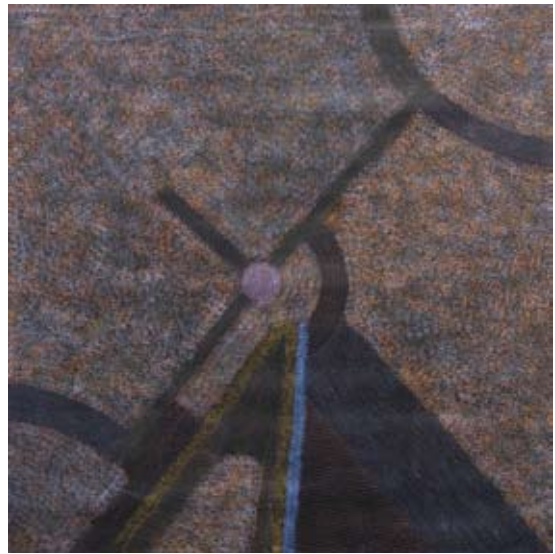
See illustration



113



114



116



115

113 Basil Roughsey Australian/Aboriginal

Untitled, Australian animals & aboriginals

Acrylic on hardboard

Signed & dated '89 lower left

40.5 x 24.5cm

\$400 - 600

See illustration

114 Berarngur (Bob Berarangu) Australian/Aboriginal

Freshwater Turtles

Acrylic on bark

Unsigned

55.5 x 22.5cm

\$1,000 - 1,500

See illustration

115 Gabriella Possum Nungurrayi (1976-) Australian/Aboriginal

Seven Sisters Dreaming

Acrylic on canvas

Signed & dated 2009, & accompanying certificate of authenticity

121 x 91cm

\$4,000 - 5,000

See illustration

116 Abie Loy Kemarre Australian/Aboriginal (1972-)

Bush Hen Dreamings

Acrylic on canvas

Unsigned, accompanying certificate of authenticity

120 x 120cm

\$1,500 - 2,500

See illustration

ALPHABETICAL INDEX

PART ONE

A

Arndt, Mina 53

B

Baker, William G 71
Bennseman, Leo 100
Berarngur 114
Bower, Olivia Spencer 50-51
Brown, Nigel 96
Burge, Maude 19-20

C

Cairncross, Sam 42-45
Cotton, Shane 92-93

D

Day, Melvin 61-62
Deans, A. A. 10
De Lautour, Tony 33
Dolezel, Jenny 37
Drawbridge, John 63-64

E

Esplin, Tom 89
Evans, Jane 83-84

F

Fletcher, Blythe 1-5
Frizzell, Dick 24

G

George, Darryn 95
Gimblett, Max 59-60
Glasgow, Alexander 107
Glover, John 110
Goldie, Charles Frederick 11,
22, 40
Gully, John 73
Gifford, Edward Angus 16

H

Halcolombe, Edith 15
Hodgkins, Frances 21, 47, 52
Holmwood, John 97
Hotere, Ralph 25, 94
Hoyte, John Barr Clarke 72
Hughes, Sara 29
Hunt, Bruce 80-81

I

Illingworth, Michael 26

K

Kahukiwa, Robyn 98
Kelly, A. Elizabeth 54
Kemarre, Abie Loy 116
Kensington, G. S. 111
Killeen, Richard 23
King, E 108

L

Lewer, Richard 34
Lindauer, Gottfried 70
Lowry, Laurence Stephen 105
Lusk, Doris 87

Mc

McCracken, Francis 68-69
McIntyre, Peter 66-67

M

Maddox, Allen 31-32
Madden, John MacIntosh 79
Meadows, W. G. 109
Meissonier, Jean Louis Ernest
106

N

Ngan, Guy 58
Nicoll, Archibald 6
Nungurrayi, Gabriella Possum
115
NZ Railways Studios 101-104

O

O'Brien, George 75
O'Hagan, Peter 82
O'Keefe, Alfred H 74
Olds, Paul 88

P

Parker, John 46
Paterson, Reuben 57
Pearson, Alan 41
Peryer, Peter 97
Perkins, Christopher 8
Pule, John 30
Pusinelli, Doris 112

R

Reynolds, John 36
Richmond, Dorothy Kate 49
Roberts, Glenda 85
Roughsey, Basil 113
Ryde, Alison 86

S

Savage Cedric 7
Smither, Michael 39
Stoddart Margaret 17-18, 48
Stringer, Terry 28
Summerton, Justin 90-91

T

Taylor, E. Mervyn 99
Te Waru Rewiri, Kura 35
Tole, Charles 27
Turner, Dennis Knight 65

U

Unknown Artist 12-14

W

Wheeler, Colin 9
White, Robin 55-56
Wilson, Laurence W. 76-78
Woollaston, Mountford Toss will
(Toss) 38

PART TWO

A

Adair, H. 255
Adkin, N.F. 333
Allen Bollard, W. 186, 406, 491
Arini Vane, K. 403

B

Babbage, H. 443
Baker, W.G. 291
Barc (H. Crab) 437-8
Barton, C. 282
Baxter, A.E. 188
Baxter, B. 224-7
Bell-Pearson, C. 308
Bennett, G. 481
Bianchi, F. 502
Boelee, R. 431
Bouverie, B. 457
Brinsley, G. 347
Brown, I. 185,387
Burge, G.A. 214-5
Burge, M. 212-3
Burnett, T. 204-5, 394

Burton, S. 485
Busch, H. 237

C

Cairncross, S. 301-2
Calzada, E. 274
Campbell, L. 339-40
Catano, J. 292
Chance, G. 441, 487
Chapman-Taylor, J. 488
Chaston, G. 307
Chilvers, R. 344
Clark, R. 257
Coghill, R. 498, 505
Coley, Jacqui 304
Coley, John 359
Conrad, C. 389, 476-8
Coolahan, K. 318, 399
Coop, H. 392
Corden, V. 288
Cowan, R. 250
Cowie, D. 400
Cowen, D 506
Crawford, J. 236
Croft, S. 273, 278
Crook, G. 315
Crowley, P. 449

D

Dalgarno, R. 448
De Lautour, T. 229-31
Dell, M. 362
Dickison, R. 353-4
Dolezel, J. 309
Drawbridge, J. 210
Duffell, L. 518
Dutch, T. 242

E

Ebatarinji, A. 297
Eden, S. 365-380
Edgar, C. 336, 456, 466
Einhorn, J. 316
Elliot, M. 391
Eton, B. 381-2

F

Feu'u, F. 201,244
Fletcher, B. 180-4
Flight, P. 440
Foreman, N. 235
Forster, F. 261-4
Franken, R. 319
Freeman, W. 350
Frizzell, D. 248
Fumpston, R. 394-5

G

Greathead, A. 223, 405, 493
Greenwood, P. 432
Grey, V. 401
Goldie, C.F. 507

H

Hagiwara, T. 461
Hannah, E. 385-6
Harman, L. 306
Harrison, M. 490
Harrison, R. 341
Hay-Campbell, C. 260
Heinemann, K. 508
Henry, B. 196-9
Henry Howorth, C. 499
Hight, M. 233
Hill, C. 433
Holl, F. 284
Holldron, L. 500

Homes, J. 512
Howie, A. 471
Howie, E. 352

I

Ibrahim, L. 398

J

Jackson, R. 320
Jobson, R. 462-4
John, D. 343
Jones Roberts, G. 516

K

Kay, E. 364
Khytko, T. 360
King, M. 228
Kirkwood, H.W. 272, 276-7
Kivits, J. 295
Knapp, E. 305
Knight, G. 194
Kuroda, S. 470

L

Laugesen, C. 299
Leenards, G. 238-9
Lendrum, A. 361
Lethbridge, J. 317
Lewis, L. 383
Lindsay, H. 479
Linley Richardson, H. 334
Lubof, E. 267
Lysaght, A. 460
Lysaght, S. 459

M

McCormack, T.A. 271, 300
MacDiarmid, D. 216-7, 483
McDonald, S. 435
McFarlane, S. 266, 397
McIntyre, P. 190
MacLennan, S. 472
McLeod, R. 474
Maidens, K. 473
Markham, P. 351
Martinson, P. 321-5
Matthews, M. 486
Mayclair 409
Mervyn-Taylor, E. 252
Menzies-Gibb, W. 189
Mitchell, L.V. 259
Mortimer, R. 234
N
Neilson, D.R. 342
Nelson, D.R. 338
Nelson, K. 345
Nin, B. 202

O

Olson, M. 390
Ormerod, P. 241, 312-3, 396

P

Palmer, A. 450
Palmer, S. 195
Papps, E. 384
Parker, J.S. 447
Paul, G. 451
Paul, J. 218-9, 254
Peerless, T. 191
Perrot, H. 504
Peter, J. 206-7, 434
Petherick, W.J. 279
Pickmere, A. 312
Ponder, R. 337
Pond-Eyley, C. 243, 393
Poole, B. 310

ALPHABETICAL INDEX CONTINUED

Posters 326-30, 415-30
Pule, J. 249

Q
Quirke, B. 311

R
Rae, A.J. 270
Rattle, H.H. 452
Ruffo 514-5

S
Savage, C. 256
Scott, R. 314
Sears, P. 332
Seddon, B. 268-9
Shallcross, R.F. 480
Sharman, J. 349
Siddell, P. 203
Smart, B. 511
Smith, M. 484
Smither, M. 208-9, 245-7, 253, 465
Soo Pieng, C. 251
Soper, M.F. 492
Speedy, J. 222
Straton Ferrier, G. 283
Swinton Diston, J. 453

T
Tait, G. 348
Taylor, D. 439
Taylor, J. 482
Thompson, S. 513
Tingey, R.L. 404
Todonai, R. 388
Toomer, K.J. 346
Tricker, G. 396
Tuffert, M. 200
Tulkin, V. 355

V
Van der Velden, P. 335

W
Waghorn, R. 192-3
Walker, J. 363
Wallwork, R. 495-7
Wardrop, A. 489
Warne, A. 303
Watson, R.B. 220-1, 458
Wauchop, W.S. 187
Webb, M. 240
Weber, W.H.M. 517
Webster-Nash, H. 444-5
Welch, N. 258
Whiteman, V. 407
Whites Aviation, 442
Whitt, M. 455
Whiu, H. 436
Williams, C. 475
Willis, N. 454
Wilson, M. 293
Wilson, T.A. 503
Worsley, C.N. 281, 296

Y
Young, J. 357

PART THREE

A
Adams, Luke A155-A159
Amalgamated Brick Pipe, A162
Ambrico, A142-A150
Ansouth, Pamela A100
Anselmi, Catherin A37
Axtell, Ian A39

B
Ball, Barry A23
Barraud, Arnaud A40
Benhar Potteries, A154
Blight, Keith A42, A43
Block, Michael A92
Blumhardt, Doreen A106-A112, A203
Borren, Anneke A54-A57
Brittain, Roger A33-A35
Brittain, Rosemary A61
Brickell, Barry A1-A6

C
Carpay, Frank A132, A133, A134
Carter, Stephen A99
Castle, Len A113-A127
Castle, Ruth A200
Clark, June A161
Collis, Peter A93
Cooper, Hans A175
Cooper, Melanie A50-A53
Cotter, Adrian A88
Cowan, Roy A129
Crawford, John A30
Crewenna Pottery, A94-A99
Crowan Pottery, A177, A178
Crown Lynn, A132-A153

D
Davis, Harry & May A94-A99, A177, A178
de Jager, Paul A92
de Lange, Gennie A44
Doyle, Barry A39
Dutch, Doris A74-A76, A86

E
Englehard, Simon A87

F
Feltex A192-A194
Fisher, Paul A16
Frith, Ian A10, A79

G
Gardner, Briar A164-A166
Gartside, Brian A68, A69
Gerrard, Robert A190, A191

H
Hastedt, Jean A80, A81
Hill, Herbert A163
Hume, Henrietta A84

J
Japanese, A186
Jones, Morgan A201
Jones, Olive A167-A170

K
Kindleysides, Ted A41
Kojis, George A9

L
Laird, Jack A98
Laird, Raeburn A83
Lawrence, John A63
Leach, Bernard A185

Mc
McGlashen, Royce A36

M
Mason, Helen A78
Matheson, Elizabeth A174
Meads, Patti A45-A49, A87
Melser, Paul A25, A26, A87, A89
Mingay Art Ware (Aust) A187
Moday, Jane A31
Moody, Muriel A58, A59
Morley, Gaylene A85
Mountford, Vivienne A197, A198

P
PAKA, A174
Parker, John A70-A73
Parkinson, Cecelia A73
Peter, Juliet A62
Pointon, Debbie A82

R
Rancich, Jova A130, A131
Remued Pottery, (Attrib) A188
Richards, Ross A86
Rie, Lucie A175, A176
Rogers, Ray A17
Rushton, Grace A199
Rust, Yvonne A32

S
Shufflebotham, Ernest A135-A139
Smisek, Mirek A101-A105
Soetsu, Yanagi A202
Souvenir Rug, A196
Stephens, O C A170-A173
Stichbury, Peter A11-A15
St Ives, A105, A179-A182, A185
Storm, Graeme
Sumich, Margaret A84

T
Taepa, Wi A128
Tattersfield, A195
Temuka Potteries, A160, A161
Tippett, Warren A7, A8
Trumic, Michael A19

U
Unkown Potters A18, A24, A35, A90, A91, A183, A184, A189

V
van der Putten A20, A21, A126
van Dyke, A27
Verdcourt, Anne A77

W
Waimea Pottery, A29, A90
Webster-Watson, A64-A67
Weissburg, Jo A60
Williams, Howard A40
Winspear, Paul A28
Woods, Barry & Diane A38
Wotherspoon, Paul A89

CATALOGUE SUBSCRIPTION

Please forward me the following catalogues (postage within New Zealand included, overseas subscribers please add costs as noted):

WELLINGTON
Dunbar Sloane Ltd • PO Box 224 • Wellington 6140 • New Zealand
Email info@dunbarsloane.co.nz • Ph (04) 472 1367 • Fax (04) 475 7389
(GST Reg. No. 11-250-866)

		Tick	NZ Cost	Europe/USA	Australia/Pacific
Antique & Artefacts	minimum of 3 colour catalogues per year		\$60.00	\$130.00NZ	\$90.00NZ
Fine & Applied Art	minimum of 3 colour catalogues per year		\$60.00	\$130.00NZ	\$90.00NZ
Toys & Dolls	minimum of 2 colour catalogues per year		\$40.00	\$75.00NZ	\$60.00NZ
Wine	minimum of 2 catalogues per year		\$20.00	\$40.00NZ	\$35.00NZ
Rare Books, Maps	minimum of 2 catalogues per year		\$30.00	\$50.00NZ	\$45.00NZ

AUCKLAND
Dunbar Sloane Ltd • PO Box 68 527 • Newton • Auckland • New Zealand
Email dunbar.akl@xtra.co.nz • Ph (09) 630 9178 • Fax (09) 630 9173
(GST Reg. No. 75-833-277)

		Tick	NZ Cost	Europe/USA	Australia/Pacific
Maori/Pacific Artifacts NZ Historical, Art Militaria & Collectables	minimum of 3 colour catalogues per year		\$70.00	\$140.00NZ	\$100.00NZ

I enclose my cheque payable to Dunbar Sloane Ltd for the above catalogues, alternatively please charge my credit card, details as follows:

Credit Card No. Expiry Date

Total NZ\$.00

If extra catalogues in the categories chosen are produced, these will be sent to you at no extra cost.

Name

Address

City Postcode

Country

From To

Office will look after this line

CONDITIONS OF SALE

- 1
The highest bidder to be the buyer, and if during the auction the auctioneer considers that a dispute has arisen, the lot so in dispute shall be immediately put up again for sale.
- 2
The auctioneer has the right to refuse any bid and to advance the bidding at his absolute discretion.
- 3
a. The seller shall be entitled to place a reserve on any lot and the auctioneer shall have the right to bid on behalf of the seller for any lot on which a reserve has been placed.
b. Dunbar Sloane's have the right to withdraw or divide any lot or to combine any two or more lots at their sole discretion.
- 4
a. The buyer shall forthwith upon the purchase give in his name and permanent address.
b. The buyer may be required to pay down forthwith the whole or any part of the purchase money, and if he fails to do so, the lot may at the auctioneers absolute discretion be put up again and resold.
c. The premium the buyer shall pay to Dunbar Sloane is 14.0% on the hammer price together with G.S.T. at the standard rate on the premium and agrees that Dunbar Sloane, when acting as agent for the seller, may also receive commission from the seller.
- 5
a. Each lot sold by the seller thereof with all faults and defects therein and with all errors of description and is to be taken and paid for whether genuine and authentic or not and no compensation shall be paid for the same.
b. Dunbar Sloane's act as agents only and neither they nor the seller are responsible for any faults or defects in any lot or the correctness of any statement as the authorship, origin, date, age, attribution, genuineness, provenance or condition of any lot
c. All statements in the catalogues, advertisements or brochures of forthcoming sales as to any of the matters specified in (b) above are statements of opinion, and are not to be relied upon as statements of representations of fact, and intending purchasers must satisfy themselves by inspection or otherwise as to all of the matters specified in (b) above, as to the physical description of any lot, and as to whether or not any lot has been repaired.
d. The seller and Dunbar Sloane's do not make or give, nor has any person in the employ of Dunbar Sloane's any authority to make or give, and representation or warranty.
- e. In any event neither the seller nor Dunbar Sloane's are responsible for any representation or warranty, or for any statement in the catalogues, advertisements, or brochures of forthcoming sales.
- 6
Notwithstanding any other terms of these conditions, if within 7 days after the sale Dunbar Sloane's have received from the buyer of any lot notice in writing that in his view the lot is deliberate forgery and within 9 days after such notification, the buyer returns the same to Dunbar Sloane's in the same condition as at the time of sale and satisfies Dunbar Sloane's had considered in the light of the entry in the catalogue the lot is a deliberate forgery then the sale of the lot will be rescinded and the purchase price of the same refunded.
- 7
a. To prevent inaccuracy in delivery, and inconvenience in settlement of purchase, no lot can be taken away during the times of sale, nor can any lot be taken away unless it has been paid for in full.
b. All lots are to paid for and taken away at the buyer's expense within TWO days from sale.
- 8
On failure of a buyer to take away and pay for any lot in accordance with Condition 7, Dunbar Sloane reserves any other right or remedies.
i. To resell the lot or cause it to be resold by public sale, any money paid in part payment being forfeited, any deficiency attending such resale after deducting all costs incurred in connection with the lot to be made good by the defaulting buyer, and any surplus to be the seller's or:
ii. To store the lot or cause it to be stored whether at their own premises or elsewhere at the sole expense of the buyer, and to release the lot only after payment in full of the purchase price together with interest thereon of 5% above bank minimum lending rate, the accrued cost of removal, storage and insurance (if any) and all other cost incurred in connection with the lot.
iii. If the lot has been in store pursuant to (ii) for more than 6 months, to remove the lot from store and to exercise the right set out in (i).

BUYERS GUIDE

If you have not bought from Dunbar Sloane before please read the following notes. They are set out in the order you are likely to come across them in the process of buying at auction. Staff will be pleased to answer any questions you may have.

BEFORE THE AUCTION

• **CONDITIONS OF BUSINESS**

The terms and conditions under which the buyer acts at a sale are detailed at the rear of this catalogue. We recommend that you read and understand these conditions before registering to bid at auction. This sale is subject to the conditions of business printed in this catalogue and to the reserves.

• **VIEWING**

All lots are available for inspection prior to the sale. Although staff will endeavour to answer your enquiries and give advice, the final decision to bid and the amount is at your discretion and liability. Pre-sale estimates are the estimated prices printed. They are in New Zealand dollars and are the approximate prices expected to be realised, excluding buyers premium. They are not definitive, they are prepared well in advance of the sale and are subject to revision.

• **CONDITION REPORTS**

Dunbar Sloane Ltd will provide a verbal condition report if you would like an opinion on the condition of any particular lot prior to purchasing.

THE AUCTION

• **REGISTRATION**

To bid at the auction you will need to register for a bidding number at the front desk either during the viewing or prior to the auction.

• **BUYING AT AUCTION**

Please bid clearly and promptly using your bidding number. When you successfully purchase a lot the auctioneer will ask you for your number and this will show on your invoice. Approximate selling rate auctions are generally conducted at the rate of around 100-120 lots per hour. However, this can vary.

• **ABSENTEE BIDDING**

If you are unable to attend the auction, Dunbar Sloane Ltd can bid on your behalf according to your written instructions. This is a free service for intending buyers. Please complete clearly the written bidding form at the back of this catalogue and submit it to Dunbar Sloane Ltd at least 24 hours before the sale to ensure it is safely received. Lots will be purchased for you as reasonably as possible, subject to other bids in the room and to reserves.

• **TELEPHONE BIDDING**

If you are unable to attend the auction in person, you can elect to bid by telephone. This must be arranged with Dunbar Sloane Ltd at least 24 hours prior to the sale and is subject to a minimum lot value of \$1,000. We accept no responsibility if for whatever reason we are unable to contact you during the auction.

• **BUYERS PREMIUM**

The buyer shall pay to Dunbar Sloane Ltd a premium of 14% of the hammer price plus G.S.T, effectively adding 16.10% to the hammer price.

AFTER THE AUCTION

• **PAYMENT**

Payment for purchase is due in New Zealand dollars within 48 hours from the date of sale by cash, cheque or eftpos. Alternatively payment can be made by telegraphic transfer direct to our bank. Please add \$20 NZ to cover New Zealand bank charges.

National Bank of New Zealand, Wellington Branch

Credit 06 0501 0524945 00

170-186 Featherston Street

Payee Dunbar Sloane Ltd

Swift Code ANZBNZ 22

Please include details of sale date, sale type and lot numbers with all payments.

• **COLLECTION OF PURCHASES**

Property purchased can be collected as soon as full payment has been received. Any items not collected within seven days of the auction may be subject to a storage and insurance fee.

• **NATIONAL PACKAGING AND TRANSPORT**

We prefer you (the purchaser) to pack and arrange transport. Removal trucking firms can make crates, wrap your goods and have them delivered to you. Note: Couriers do not pack and require payment before they pick up the goods. If you wish Dunbar Sloane Ltd to pack and provide packing materials and arrange and pay for couriers we charge for this service. This is to be paid before the goods leave our premises. We pack with care, however we take no responsibility for damage once your goods leave our premises. We insist you take out your own insurance to cover any damage or loss in transit.

• **INTERNATIONAL SHIPPING AND STORAGE**

Dunbar Sloane Ltd can advise on the best method of packing and freight to send purchased property internationally. A wide variety of methods of despatch are used depending on the weight and volume and cost estimates can be obtained from us at any time. Upon receiving your written instructions, we will with discretion, engage professional commercial shippers or deal with the shippers of your choice. Long term storage can also be arranged. Insurance is the buyers responsibility for freight and storage.

• **OPENING TIMES**

Dunbar Sloane Ltd general office hours are Monday to Friday 8.30am-5pm. Please note many of our advertised or published auction and viewing times fall outside these hours.

• **SUBSCRIPTIONS**

Dunbar Sloane Ltd catalogues are reference works collected in their own right, as well as being the essential guide to any auction. Annual subscriptions ensure regular receipt of catalogues. Refer to subscription details at back of this catalogue.

• **EMAIL**

info@dunbarsloane.co.nz

• **INTERNET SITE**

www.dunbarsloane.com

ABSENTEE BIDDING FORM

Dunbar Sloane Ltd
PO Box 224
Wellington 6140
New Zealand
Phone +64 4 472 1367
Fax +64 4 475 7389
info@dunbarsloane.co.nz
www.dunbarsloane.com

FINE & APPLIED ARTS • 17 - 18 NOVEMBER 2010

Please bid on my behalf at the above sale for the following lots. These bids are to be executed as reasonably as permitted by other bids or reserves. I agree to comply with the conditions of sale as printed in this catalogue.

Full Name _____

Address _____

Telephone _____

Fax _____

Mobile _____

Email _____

Signed & Dated _____

Check lot numbers and description. Place your bid/s as early as possible, as in the event of identical bids, the earliest will take precedence. 'Buy' bids are not accepted. The limit you leave should be the amount to which you would bid if you were to attend the auction.
Buyers premium: Buyers are reminded that a buyer's premium of 14% on the hammer price plus G.S.T. on the premium shall be paid to Dunbar Sloane Ltd, all up 16.10%.
Successful Bidders will be notified at which time arrangements may be made for payments, collection and despatch.

LOT NO.	TITLE / DESCRIPTION	\$BID PRICE (excluding premium)