

Altova MissionKit is available in two editions designed to offer the functionality you need – at an attractive price.

Altova MissionKit Enterprise Edition

provides the most advanced functionality, including XBRL tools, Web services development, chart creation, EDI mapping, and more, in addition to core functionality for XML, SQL, and UML development, in a tightly integrated toolset. It includes Enterprise Editions of XMLSpy, MapForce, StyleVision, UModel, DiffDog, DatabaseSpy, and SchemaAgent.

Altova MissionKit Professional Edition

offers a subset of the tools and functionality found in the Enterprise Edition. It includes Professional Editions of XMLSpy, MapForce, StyleVision, UModel, and DatabaseSpy.



Altova MissionKit wins Jolt Award for Best Development Environment



- XML editor
- Graphical schema editors
- XSLT & XQuery editors, debuggers, & profilers
- Web services development
- MS Office / OOXML support
- XBRL validator & taxonomy editor
- JSON editor / converter
- XML chart creation



- Graphical data mapping tool for:
 - XML
 - Databases
 - EDI (EDIFACT, X12, HL7, IDoc)
 - Flat files
 - Excel / OOXML
 - XBRL
 - Web services



- XSLT & XSL:FO stylesheet designer
- Electronic forms designer
- Report builder for XML, DBs, XBRL
- HTML, Word, PDF & e-form output
- Chart generation for XML, DBs, XBRL



- UML modeling tool
- Support for all 14 UML diagrams, BPMN & SysML
- Support for Model Driven Architecture with model transformation
- SQL database modeling
- Code gen / reverse engineering for Java, C#, VB.NET



- Multi-database design / query / comparison tool
- Intelligent SQL editor
- Content editing & structure conversion
- Chart creation from SQL results



- Compare & merge:
 - Text
 - XML
 - MS Office (OOXML)
 - Directories
 - Databases
 - XML and database schemas
- XML-aware differencing options

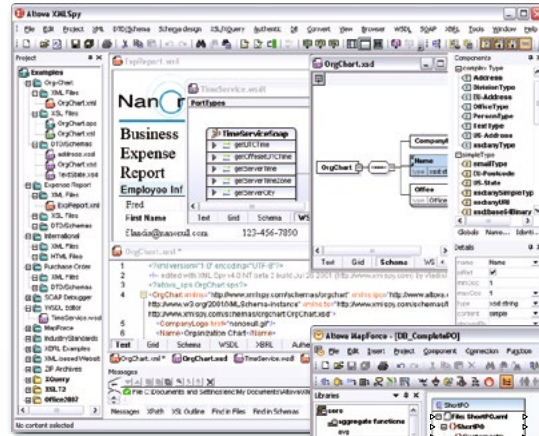


- XML-based file management
- Visualize and drag & drop to manage file relationships
- View & configure IIRs
- Build complex XSD, XSLT & WSDL docs from smaller components

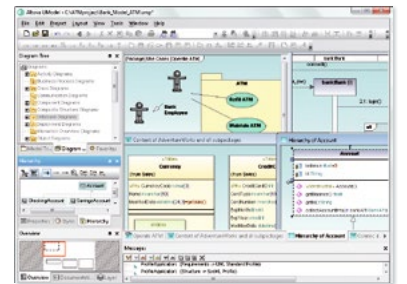


Altova® MissionKit® – integrated Suite of XML, SQL, and UML tools for information architects and application developers.

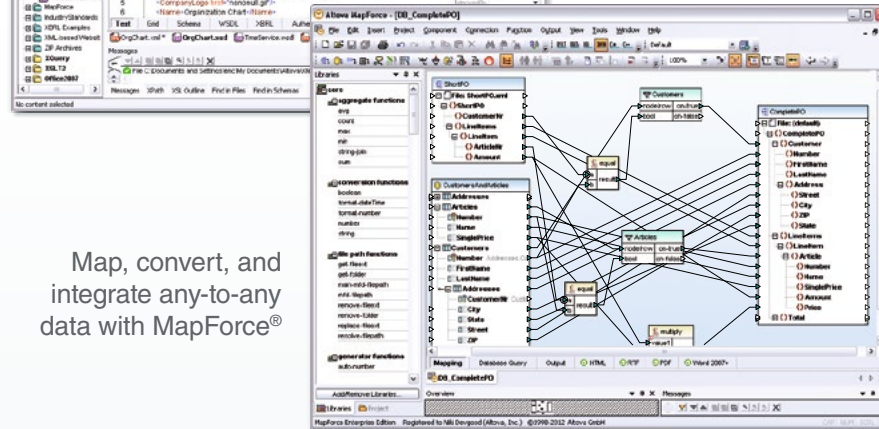
MissionKit includes Altova XMLSpy, MapForce, StyleVision, and other marketleading products for building today's real-world software solutions. Choose Altova MissionKit, you'll get up to seven award-winning tools for less than the price of two!*



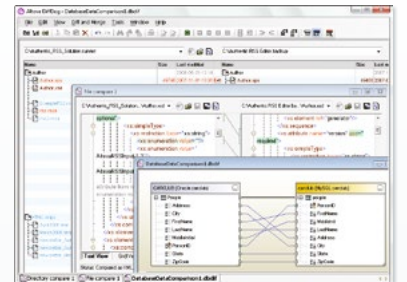
Develop XML, and Web & Web services with XMLSpy®



Develop applications and model software with UModel®



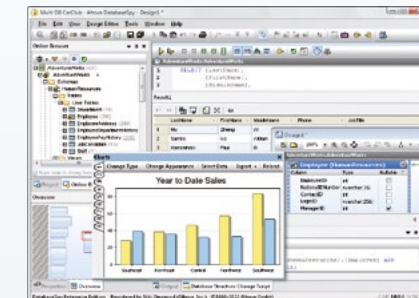
Map, convert, and integrate any-to-any data with MapForce®



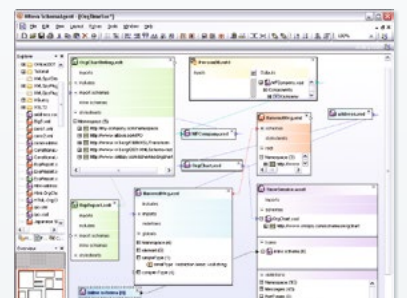
Diff/merge differences in files, folders, directories, and databases with DiffDog®



Create and publish attractive charts and reports with StyleVision®



Design databases and queries for multiple databases with DatabaseSpy®



Manage XML-based file relations with SchemaAgent®

The Altova MissionKit software suite includes the complete Altova product line at a special price.









Visit www.altova.com to download a free, fully-functional 30-day trial!



What’s New in the Altova® MissionKit®

Listed below are highlights of new features added in recent releases. For a complete list, including versions before v2010, visit <http://www.altova.com/newfeatures.html>.

	v2014	v2013	v2012	v2011	v2010
<div> XMLSpy®</div> <div>XMLSpy is the industry-leading XML development environment.</div>	<ul style="list-style-type: none">• XML Schema 1.1 support• Integration of RaptorXML engine• XPath 3.0, XSLT 3.0, and XQuery 3.0 support• XBRL Formula and Table Linkbase support• XSL Speed Optimizer• Integration with Eclipse 4.3 & Visual Studio 2013• Numerous validation and XML generation enhancements	<ul style="list-style-type: none">• Smart Fix validation• Seamless integration options in Java applications• Support for embedding XML Schemas in WSDL files• Enhanced WSDL documentation options• Flexible integration of external programs	<ul style="list-style-type: none">• EPUB 2.x support• Support for logical files in IBM iSeries® databases• Escape/unescape XML characters• HTML5 & CSS support• JDBC support• Java API	<ul style="list-style-type: none">• Support for the 2011 US GAAP financial reporting taxonomy• Embedding external files in XML• Customizable documentation generation• Chart creation for XML data• SOAP validation against WSDL• Schema flattener & subset creator	<ul style="list-style-type: none">• WSDL 2.0 editing and conversion• XBRL documentation generation• XBRL Taxonomy Wizard• Printing graphical XBRL View• Find in XBRL, XBRL sorting• JSON editor and JSON <=> XML conversion• New scripting environment• 64-bit version
<div> MapForce®</div> <div>MapForce is a visual data mapping and data integration tool.</div>	<ul style="list-style-type: none">• Support for XML wildcards and CDATA in XML files• Integration of RaptorXML for XSLT and XQuery transformations• New functions for processing and generating sequences• Timeout settings for Web services calls and database execution• Integration with Eclipse 4.3 & Visual Studio 2013	<ul style="list-style-type: none">• Support for SQL stored procedures• New API for integration into Java programs• Support for US GAAP 2012 XBRL taxonomy• Integration with Eclipse 4.2	<ul style="list-style-type: none">• Sort input data by various criteria• Streaming reading for large files and databases• New parse-date and parse-time functions• JDBC support• Java API• Define multiple ranges in a single Excel worksheet	<ul style="list-style-type: none">• Native support for HIPAA 5010• Expandable if-else component• Chained transformations• StyleVision integration for rendering output	<ul style="list-style-type: none">• Using input/output file names as parameters• Support for WSDL 2.0• Support for mapping field names (headers) in Excel 2007+• Support for SAP IDoc• 64-bit version• EDI file validation in generated code
<div> StyleVision®</div> <div>StyleVision is a stylesheet and report designer for XML, databases, and XBRL.</div>	<ul style="list-style-type: none">• Integration of RaptorXML engine• XSLT 3.0 and XPath 3.0 support• Enhanced XPath dialog• Support for new databases• New Altova extension functions• Integration with Eclipse 4.3 & Visual Studio 2013	<ul style="list-style-type: none">• Table row and column conditions• XPath Evaluator extension of XPath Builder• Java application seamless integration• Watermark support• Additional toolbars for easier design	<ul style="list-style-type: none">• RichEdit functionality for Authentic forms• Composite styles• Dynamic class assignment & CSS selection• HTML5 & CSS3 support• JDBC support• Java API	<ul style="list-style-type: none">• Chart creation for XML and XBRL• XBRL chart wizard• New spell checker and improved dictionary support• Barcode support• Support for embedded images in XML• Support for XML digital signatures	<ul style="list-style-type: none">• Support for iXBRL• Enhanced header/footer options• Support for vertical text• Support for multiple page layouts in one document• Ability to import external XSLT files• Ability to modify output DPI• 64-bit version
<div> UModel®</div> <div>UModel is UML tool for software modeling and application development.</div>	<ul style="list-style-type: none">• Support for new databases• Support for project-related SPL templates for greater customization of generated code• Integration with Eclipse 4.3 & Visual Studio 2013	<ul style="list-style-type: none">• Support for UML 2.4• Support for SysML 1.2• Support for displaying .NET properties as UML associations• Spell checker for model components	<ul style="list-style-type: none">• Model Driven Architecture• Code generation from UML sequence diagrams• Support for logical files in IBM iSeries databases• JDBC support• Visual alignment guides	<ul style="list-style-type: none">• Enhanced class diagrams for C# and Visual Basic projects• Scripting support for .NET 4.0 and .NET assemblies• Support for BPMN 2.0• Code generation from state machine diagrams• Modeling SQL databases• Teamwork support	<ul style="list-style-type: none">• Automatically generate multiple sequence diagrams from reverse engineered classes• Support for protocol state machine• Support for SysML v1.1• Enhanced integrated scripting environment• 64-bit version
<div> DatabaseSpy®</div> <div>DatabaseSpy is a multi-database query, design, and comparison tool.</div>	<ul style="list-style-type: none">• Support for new databases and versions implemented across the MissionKit product line: Informix 11.70, PostgreSQL versions 9.0.10/9.1.6/9.2.1, MySQL 5.5.28, IBM DB2 versions 9.5/9.7/10.1, SQL Server 2012, Sybase ASE (Adaptive Server Enterprise) 15/15.7, and Access 2010/2013	<ul style="list-style-type: none">• Usability and user interface enhancements	<ul style="list-style-type: none">• Support for creating & editing Oracle PL/SQL packets• Support for logical files in IBM iSeries databases• Option to hide or display empty folders in directory comparison• JDBC support• Search in project window	<ul style="list-style-type: none">• Advanced chart creation for SQL query results with multiple chart types, overlays, background images, and color gradations• SQL formatting dialog• Multiple product editions• Usability and user interface enhancements	<ul style="list-style-type: none">• Support for binary database columns and external files• Support for IBM iSeries 6.1• Comparison and merging of database schemas• Conversion of database structures between different database types• 64-bit version
<div> DiffDog®</div> <div>DiffDog is a unique diff/merge tool for files, directories, and databases.</div>	<ul style="list-style-type: none">• Support for new databases for database schema and content comparison	<ul style="list-style-type: none">• Print results of directory comparisons• Significant performance improvement for XML comparisons	<ul style="list-style-type: none">• Save and reload parameters for file and folder comparisons• Support for logical files in IBM iSeries databases• Compare files and folders on FTP and HTTP servers	<ul style="list-style-type: none">• Word-processor view comparison of Word documents• Optional quick comparison of ZIP archives• Simplified directory synchronization• Faster performance on dual & multi-core systems	<ul style="list-style-type: none">• Enhanced XML child element order recognition• XML Schema comparison and generation of transformations• Database schema diff/merge• Integration into Windows Explorer• 64-bit version



Altova customers with an active **Support & Maintenance Package (SMP)** receive all major software upgrades and maintenance releases, in addition to priority technical support, at no additional cost during their SMP period.