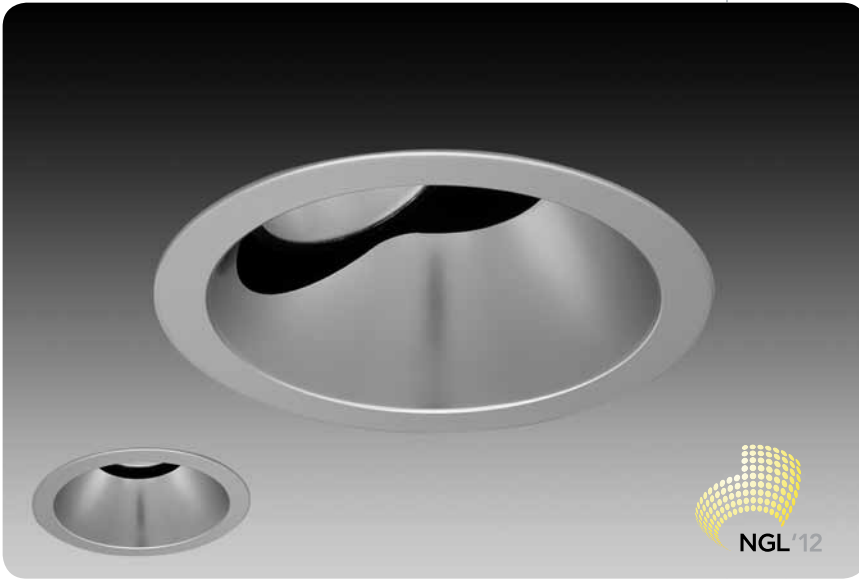


4.5" aperture adjustable accent
id[®]



features

Future-proof LED system design maintains form factor, lumen output, and thermal characteristics of module and driver as technology advances, allows for easy replacement and upgrades.

12° beam is ideal for art and object accenting, additional beamreads up to 40° complement any application.

Adjustable accent allows for 40° locking vertical tilt.

360° rotation.

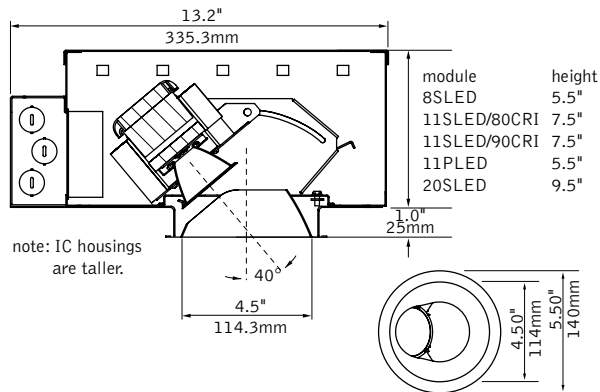
Flicker-free 0-10V analog dimming standard.

Self-flanged Clear Diffuse reflector cone features superior brightness control.

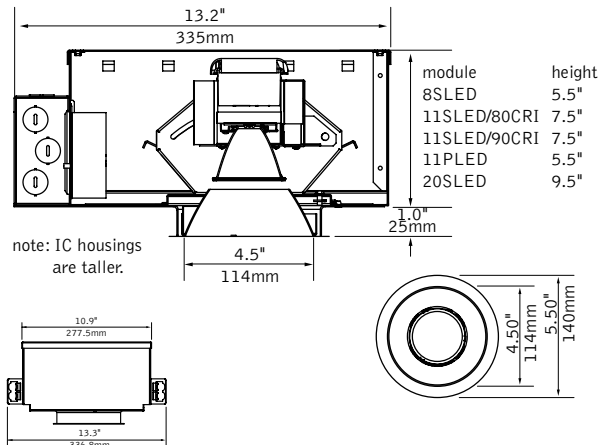
LED module meets Zhaga interface specifications for LED spotlight engines.

dimensional data

P 0-40° adjustable accent



P downlight



LED modules

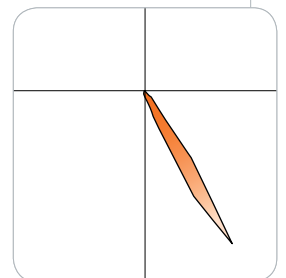


companion luminaires



performance

12° Spot at 30° tilt
3000K, 1100 Lumen Precision LED Module
Total Luminaire Output: 863lms
Photometric performance is measured in accordance with IESNA LM-79.



Visit focalpointlights.com for complete photometric data.

february 2013 B

fixture:

project:

housing specifications

led system

Powered by Philips' Fortimo™ LED SLM, Advance Xitanium LED driver and communication cable. Aluminum heat sink provides appropriate thermal management. System is future-proof, allowing for easy replacement and upgrades as LED technology advances.

led module

Philips' Fortimo™ LED SLM features superior efficacy and color consistency. Color accuracy within 3 SDCM.

construction

(T & IC) Butterfly brackets allow mounting to ½ emt. Order bar hangers as an accessory. Die-cast aluminum heat sink designed for maximum thermal dissipation. Die-formed housing and integral junction box with (7) 1/2" pry outs. Accommodates ceiling thicknesses up to 1". For thicker ceiling consult factory. Fixture will not exceed 5 lb.

(T) Thermally protected housing for new construction applications. Insulation to be kept 3" away from housing.

(IC) Insulated ceiling housing for new construction applications with direct insulation contact.

adjustment

Manual locking 40° vertical tilt and 360° rotation.

electrical

Advance Xitanium multi-volt 120V-277V constant current driver includes standard 0-10V analog dimming. Power factor >.9 typical, 50/60Hz., 200-700mA, input power range. "Thermal Guard" offers protection from overheating in abnormal conditions; driver will dim SLM if necessary. Voltage specific thermal protectors included standard. 1100 lumen and 800 lumen IC housing integrate fanless active cooling solution designed for operation by the Fortimo LED System. UL & cUL listed for thru branch wiring, four #12 90°C conductors for T housing and four #14 90°C conductors IC housing.

Module Performance

LED Module	Temp	Rated System Watts	Module Output	Delivered Lumens	
				AA	DN
8SLED	3000K	12	800		620 (NFL)
11PLED	3000K	21	1100	863 (SP)	856 (SP)
11SLED	3000K	17	1100	839 (NFL)	877 (NFL)
20SLED	3000K	30	2000	1364 (NFL)	1556 (NFL)

*Lumen output may vary +/- 5%

*Max input power 44W

*Inrush Current—74A_{pk}; 50% decay @ 120µs

Beamspread / Center Beam Candlepower (CBCP)

LED Module	Adjustable Accent (AA)			Downlight (DN)		
	SP	NFL	FL	SP	NFL	FL
8SLED					25°/2570	37°/1231
11PLED	12°/13423		30°/2278	15°/8655		33°/1998
11SLED		24°/4459	32°/1846		25°/3618	38°/1639
20SLED		29°/6566	37°/3519		26°/5725	33°/3115

dimming

0-10V DC low voltage dimming capability is included with the standard Advance Xitanium driver. Dimming range is to 10% light output, some dimmers may require high and/or low end trim adjustment for proper function. Consult the [ID LED Technical Guide](#) for compatible dimmers and control systems.

labels

UL and cUL Listed.

lifetime & warranty

LED system rated for 50,000 hours at 70% lumen output (L70). Rated life and lumen output based on maximum temperature of 65°C at Tc point on LED module. If Tc temperature rises above rated maximum due to end use conditions, lifetime and lumen output may decrease. 5 year limited warranty.

trim specifications

aesthetics

Parabolic reflector cone ensures glare free optics. Reflector is .040 spun aluminum. Torsion springs pull trim tight to the ceiling with no visible fasteners within the trim. Overlap trims are self-flanged. Non-painted trim matches reflector finish. White painted flange may also be specified.

housing ordering

housing series FLS4
ID LED 4.5" Round Adjustable FLS4

led module _____
800 Lumen LED Spot Module 8SLED
1100 Lumen LED Precision Spot Module 11PLED
1100 Lumen LED Spot Module 11SLED
2000 Lumen LED Spot Module 20SLED

color temperature _____
3000K L30
3000K, 90+ CRI (8SLED & 11SLED only) L930
3500K L35

distribution _____
Spot (11PLED only) SP
Narrow Flood (not available with 11PLED) NFL
Flood FL
Linear Spread Lens LS

driver LD1
0-10V Dimming LD1

voltage _____
120V 120
277V 277

trim type _____
Round Flush RF
Round Overlap RO

housing type _____
IC Rated (8SLED & 11SLED only. 8SLED: 7.5" Housing 11SLED: 9.5" Housing) IC
Thermally Protected, Non-IC T

factory options _____
Bar Hangers BH
Chicago Plenum (T-rated only) CP
Spot Kit SPK
Narrow Flood Kit NFLK
Flood Kit FLK
Linear Spread Lens Kit LSK
Snoot SN
Lutron EcoSystem Translator TVE

trim ordering LS4

aperture LS4
4.5" Round Aperture LS4

trim type RD
Round (compatible with RO & RF housings) RD

optic _____
Adjustable Accent AA
Downlight DN

reflector color CD
Clear Diffuse CD

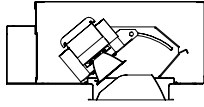
flange finish _____
Non-Painted NP
White Painted WP

a complete unit consists of two line items, housing and trim
example: FLS4-11PLED-L30-SP-LD1-120-R0-T LS4-RD-AA-CD-NP



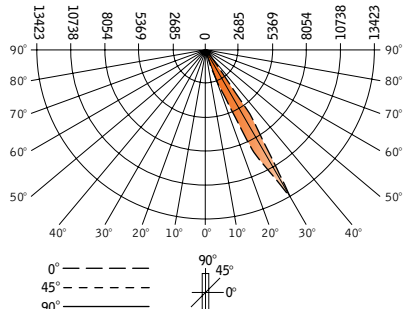
Focal Point LLC | 4141 S. Pulaski Rd, Chicago, IL 60632 | T: 773.247.9494 | F: 773.247.8484 | info@focalpointlights.com | www.focalpointlights.com. Focal Point LLC reserves the right to change specifications for product improvement without notification.

4.5" round led adjustable accent
id[®]



Luminaire: 1100lm precision spot - 12" spot
 Filename: FLS4A11PLEDL30SP.IES
 Catalog #: FLS4A-11PLED-L30-SP-LD1-120-R0-T / LS4-RD-AA-CD-WP
 Photometric Report #: 16598.0

CANDLEPOWER DISTRIBUTION - 30° TILT



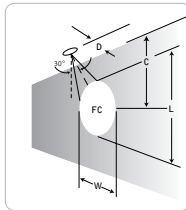
Vertical Angle	Horizontal Angle			
	0°	45°	90°	135°
0°	332	332	332	332
5°	485	457	306	170
15°	677	499	142	30
25°	8741	432	28	6
35°	6249	348	4	0
45°	529	18	0	0
55°	17	5	0	0
65°	5	0	0	0
75°	0	0	0	0
85°	0	0	0	0
90°	0	0	0	0

Footcandle results based on AGI32; Reflectances=0/0/0; LLF=1

Go to www.focalpointlights.com for additional photometric data.

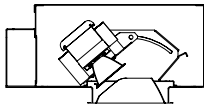
FOOTCANDLE VALUES

30° aiming angle - vertical surface



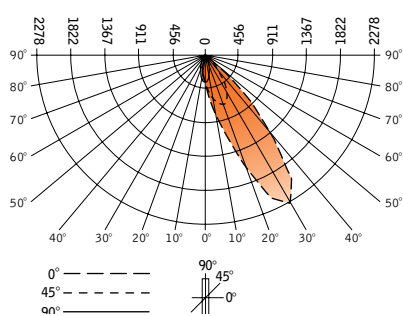
D	C	FC	L	W
18"	2.8'	402	1.3'	1.1'
24"	3.4'	306	1.5'	1.1'
30"	4.3'	220	1.8'	1.3'
36"	5.3'	160	2.2'	1.4'

4.5" round led adjustable accent
id[®]



Luminaire: 1100lm precision spot - 30° flood
 Filename: FLS4A11PLEDL30FL.IES
 Catalog #: FLS4-11PLED-L30-LD1-FL-120-R0-T / LS4-RD-AA-CD-WP
 Photometric Report #: 16601.0

CANDLEPOWER DISTRIBUTION - 30° TILT



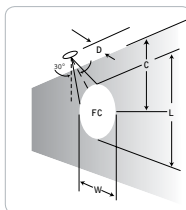
Vertical Angle	Horizontal Angle			
	0°	45°	90°	135°
0°	366	366	366	366
5°	565	469	348	264
15°	1122	649	224	118
25°	2100	683	120	52
35°	2013	479	51	22
45°	909	152	16	0
55°	125	25	2	0
65°	10	0	0	0
75°	0	0	0	0
85°	0	0	0	0
90°	0	0	0	0

Footcandle results based on AGI32; Reflectances=0/0/0; LLF=1

Go to www.focalpointlights.com for additional photometric data.

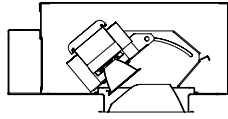
FOOTCANDLE VALUES

30° aiming angle - vertical surface



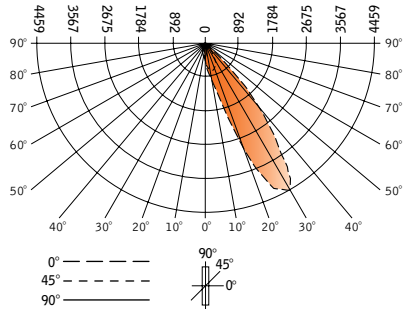
D	C	FC	L	W
18"	2.0'	151	1.8'	1.4'
24"	2.8'	89	2.4'	1.9'
30"	3.3'	59	2.9'	2.2'
36"	4.3'	42	3.5'	2.7'

4.5" round led adjustable accent
id®

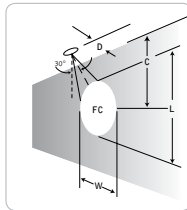


Luminaire: 1100lm adjustable accent - 25° Narrow Flood
 Filename: FLS4A11SLEDL30NFL.IES
 Catalog #: FLS4-11SLED-L30-NFL-LD1-120-R0-T / LS4-RD-AA-CD-WP
 Photometric Report #: 16593.0

CANDLEPOWER DISTRIBUTION - 30° TILT



Vertical Angle	Horizontal Angle				
	0°	45°	90°	135°	180°
0°	405	405	405	405	405
5°	666	577	381	236	191
15°	1546	730	184	54	41
25°	4112	657	52	13	11
35°	3410	427	6	3	0
45°	1051	41	0	0	0
55°	21	1	0	0	0
65°	3	0	0	0	0
75°	0	0	0	0	0
85°	0	0	0	0	0
90°	0	0	0	0	0



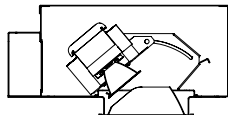
FOOTCANDLE VALUES
 30° aiming angle - vertical surface

D	C	FC	L	W
18"	2.3'	228	1.7'	1.2'
24"	2.9'	140	2.3'	1.4'
30"	3.7'	95	2.8'	1.7'
36"	4.3'	67	3.4'	2.0'

Footcandle results based on AGI32; Reflectances=0/0/0; LLF=1

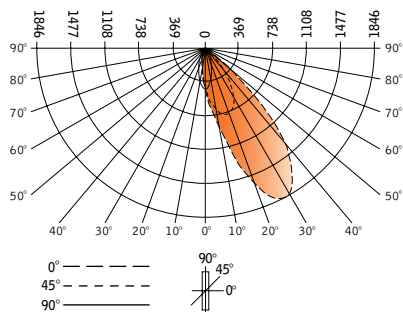
Go to www.focalpointlights.com for additional photometric data.

4.5" round led adjustable accent
id®

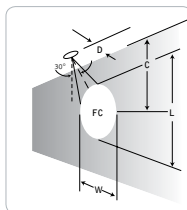


Luminaire: 1100lm adjustable accent - 35° flood
 Filename: FLS4A11SLEDL30FL.IES
 Catalog #: FLS4-11SLED-L30-FL-LD1-120-R0-T / LS4-RD-AA-CD-WP
 Photometric Report #: 16596.0

CANDLEPOWER DISTRIBUTION - 30° TILT



Vertical Angle	Horizontal Angle				
	0°	45°	90°	135°	180°
0°	444	444	444	444	444
5°	650	577	419	323	291
15°	1223	742	280	141	117
25°	1788	706	147	63	49
35°	1632	485	55	22	13
45°	891	158	15	1	0
55°	116	26	0	0	0
65°	9	3	0	0	0
75°	0	0	0	0	0
85°	0	0	0	0	0
90°	0	0	0	0	0



FOOTCANDLE VALUES
 30° aiming angle - vertical surface

D	C	FC	L	W
18"	2.0'	136	1.7'	1.4'
24"	2.5'	80	2.3'	1.9'
30"	3.1'	52	2.9'	2.3'
36"	4.0'	38	3.6'	2.9'

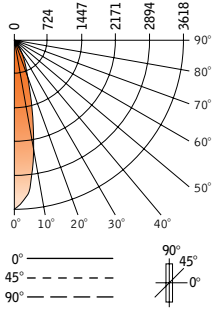
Footcandle results based on AGI32; Reflectances=0/0/0; LLF=1

Go to www.focalpointlights.com for additional photometric data.

4.5" round led adjustable accent
id®

Luminaire: 1100lm adjustable accent - 25° Narrow Flood
 Filename: FLS4D11SLEDL30NFL.IES
 Catalog #: FLS4-11SLED-L30-NFL-LD1-120-R0-T / LS4-RD-DN-CD-WP
 Photometric Report #: 16594.0

CANDLEPOWER DISTRIBUTION - 30° TILT



Vertical Angle	0°	Zonal Lumens
0°	3618	
5°	3277	313
15°	1237	351
25°	398	184
35°	42	26
45°	3	3
55°	0	0
65°	0	0
75°	0	0
85°	0	0
90°	0	0

LUMEN SUMMARY

Zone	Lumens	% Fixt
0°-30°	848	96.7
0°-40°	874	99.7
0°-60°	877	100.0
0°-90°	877	100.0
Total Luminaire	0°-90° 877	100.0

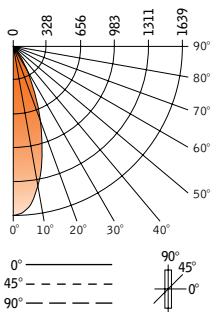
Footcandle results based on AGI32; Reflectances=0/0/0; LLF=1

Go to www.focalpointlights.com for additional photometric data.

4.5" round led adjustable accent
id®

Luminaire: 1100lm adjustable accent - 40° flood
 Filename: FLS4D11SLEDL30FL.IES
 Catalog #: FLS4D-11SLED-L30-FL-LD1-120-R0-T / LS4-DN-AA-CD-WP
 Photometric Report #: 16595.0

CANDLEPOWER DISTRIBUTION - 30° TILT



Vertical Angle	0°	Zonal Lumens
0°	1639	
5°	1573	150
15°	1063	301
25°	468	217
35°	138	87
45°	24	19
55°	4	4
65°	0	0
75°	0	0
85°	0	0
90°	0	0

LUMEN SUMMARY

Zone	Lumens	% Fixt
0°-30°	668	85.9
0°-40°	755	97.1
0°-60°	777	99.9
0°-90°	778	100.0
Total Luminaire	0°-90° 778	100.0

Footcandle results based on AGI32; Reflectances=0/0/0; LLF=1

Go to www.focalpointlights.com for additional photometric data.