

Making a difference



Working together



Achieving excellence



Teaching values

Sydney Region ICT Coordinators Day

Term 1 2011

NSW Department of Education & Training

Sydney Region

NSW Public Schools – Leading the Way www.sydneyr.det.nsw.edu.au



**Education
& Training**

Today's ICT Day Agenda

- **Term 4 ICT Update** – *What's been happening?*
- **Windows 7 Accessibility**
- **Google SketchUp**
- **Integrating ICT into Teaching and Learning** *(K-6)*
- **DER NSW Professional Learning** *(7-12)*
- **Digital Citizenship**
- **K-6 ICT Show and Tell** *(K-6 days only)*
- **Digital Education Revolution** *(High School day only)*

Wrap up of ICT Day – T4 2010

- **Term 3 Update**
- **Quest Atlantis**
- **Wireless Network for K-6 Schools**
- **Smart Notebook 10.6 (K-6)**
- **ICT Support Standards**
- **Panasonic Multitouch IWBs**
- **DER – Professional Learning** *(High School day only)*
- **Digital Education Revolution** *(High School day only)*

Term 1 2011 ICT Update

- **T4L and Connected Classrooms**



- Windows 7 Issues
- State Initiatives and News
- Sydney Region Website Updates
- LMBR – Finance for Schools

T4L Rollout

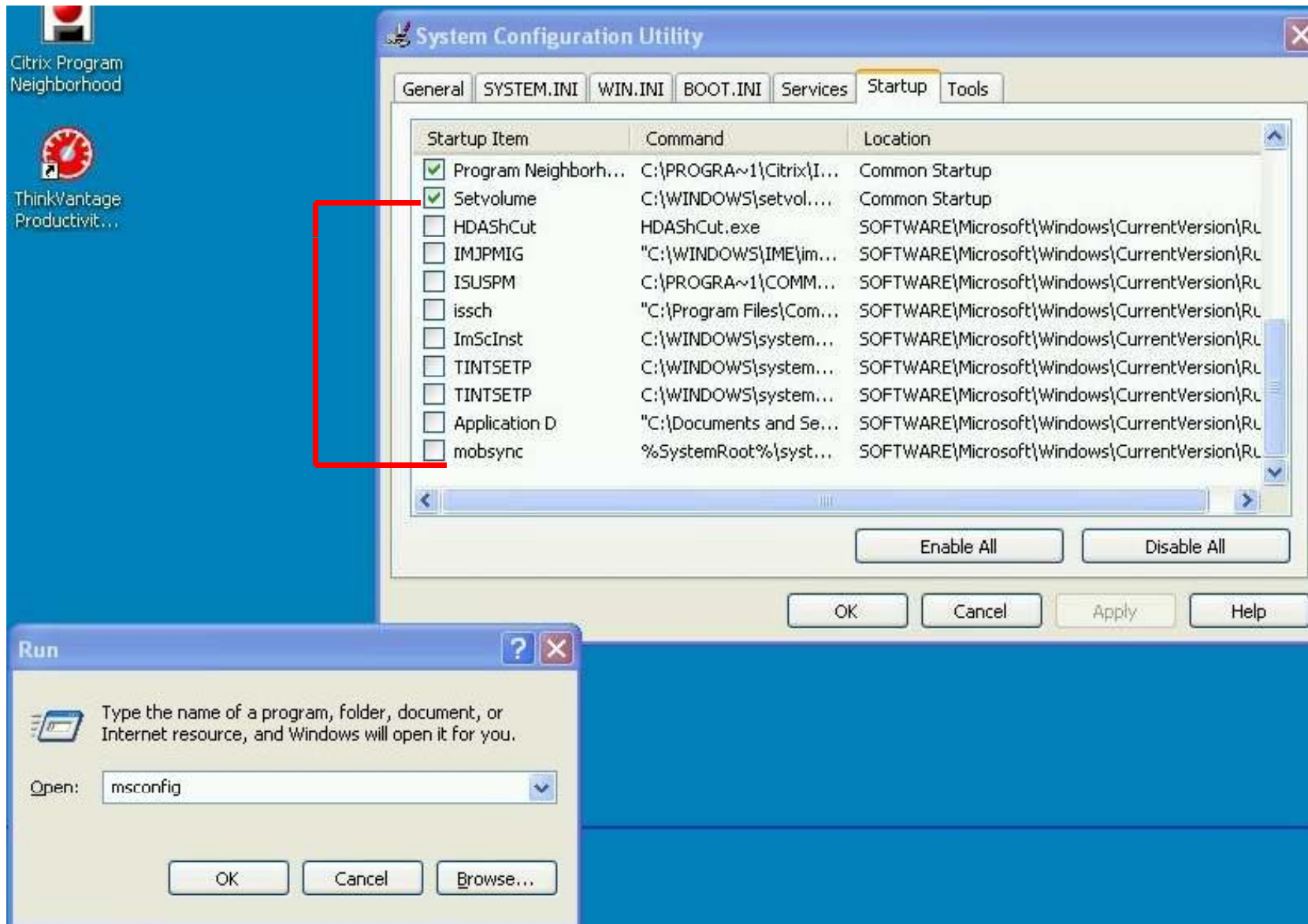
- The 2010 T4L Rollout was completed early this term with the final Lenovo Desktops delivered
- This completes the second year of the proposed 4 year T4L program, with half of the total allocation now in schools (*P5/6 schools are 100%*)
- The rough allocations for T4L (2009-2012) are as follows:
 - *7-12: 1 desktop PC per 8 students*
 - *K-6: 1 desktop PC per 6.66 students (P4-P1)*
 - *SSPs and Support Classes: 1 desktop PC per 3 students*

Lenovo XP Running Slow?

- Some previous Lenovo XP rollouts have been very slow and annoying
- The DET SOE included full multi-language support for the operating system to allow for quick language switching
- Unfortunately, this places a large overhead on the PCs which is noticeable
- If your Lenovo PC does not need any language other than English, you can speed it up by disabling some services (*logon as local administrator first*)

Lenovo XP Running Slow?

Click Start, then Run and type in MSCONFIG and press Enter. On the Startup tab, de-select the following entries (*they will normally be listed alphabetically*).



Reboot the PC when complete. Log back on as local admin and when prompted about those options, tell Windows to not show that message again.

Connected Classrooms (CC)

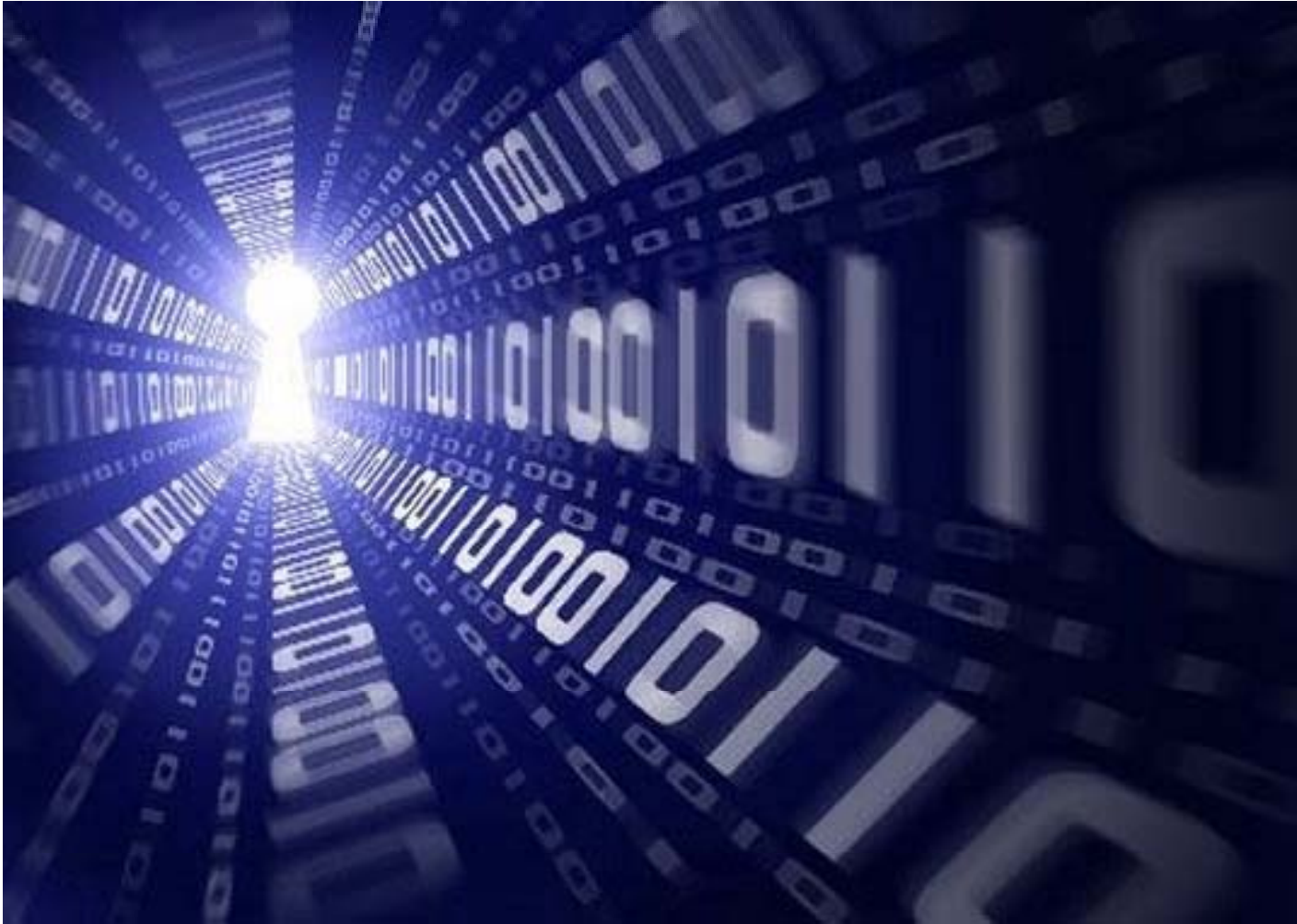
Schools remaining:

- Bates Drive School
- Bourke Street Public School
- Clovelly Public School
- Como West Public School
- Edgeware School
- Engadine Public School
- Miranda North Public School
- Newtown North Public School
- Royal Prince Alfred Hospital School
- Sutherland Hospital School
- Taverners Hill Infants School
- Yarrawarrah Public School

Connected Classrooms (CC)

- **Smart Notebook software:**
 - *When upgrading Smart Notebook to version 10.6, the Lesson activity toolkit does not automatically upgrade to version 2.0. The simplest solution is to download it separately from: <http://tinyurl.com/smartlat2>*
 - *The Download file is in zip format. It can be extracted to a folder on the server and then installed to each workstation from that location..*
 - *At the workstation, you need to browse to the shared folder and double click the Lesson Activity Toolkit.gallerycollection file. Click OK to proceed.*

Any Questions on T4L or CC?



NSW Department of Education & Training

Sydney Region

NSW Public Schools – Leading the Way www.sydneyr.det.nsw.edu.au



**Education
& Training**

Comparing 80's Technology to Today's



NSW Department of Education & Training

Sydney Region

NSW Public Schools – Leading the Way www.sydneyr.det.nsw.edu.au



**Education
& Training**

Term 1 2011 ICT Update

- T4L and Connected Classrooms
- **Windows 7 Issues**
- State Initiatives and News
- Sydney Region Website Updates
- LMBR – Finance for Schools



Windows 7 issues

- **64-bit Operating System**

- This has implications for hardware and software support, e.g., scanners, cameras, printers.
- NOTE: DER & discretionary netbooks are 32-bit Windows 7.

- **Printing and printer drivers**

- Some older printers cannot be supported as the manufacturers have not developed Windows 7 Certified 64 -bit drivers for their printers.
- This needs to be considered when deciding on the placement of Windows 7 computers in your school.

Windows 7 issues

- **OASIS**

- Citrix client version 12.1 is required. It can be downloaded from:

- <https://www.oasis.schools.nsw.edu.au>

- Receipt printers – If the receipt printer computer is mostly going to use OASIS, use an XP computer.
 - Parallel port receipt printers cannot be connected to the Windows 7 computers and some USB receipt printers do not have suitable drivers.

Windows 7 issues

- **Interactive Whiteboards (IWBs)**
 - Panasonic and Smart did not provide 64-bit drivers for their IWBs in time for the T4L SOE image. If your new Windows 7 T4L or discretionary desktop or laptop is to be connected to an IWB, the appropriate driver needs to be installed.
 - The Smart Notebook installation included in the SOE is also incomplete and should be uninstalled, with the current DET version (10.6) installed from the CPC server or Portal download link.

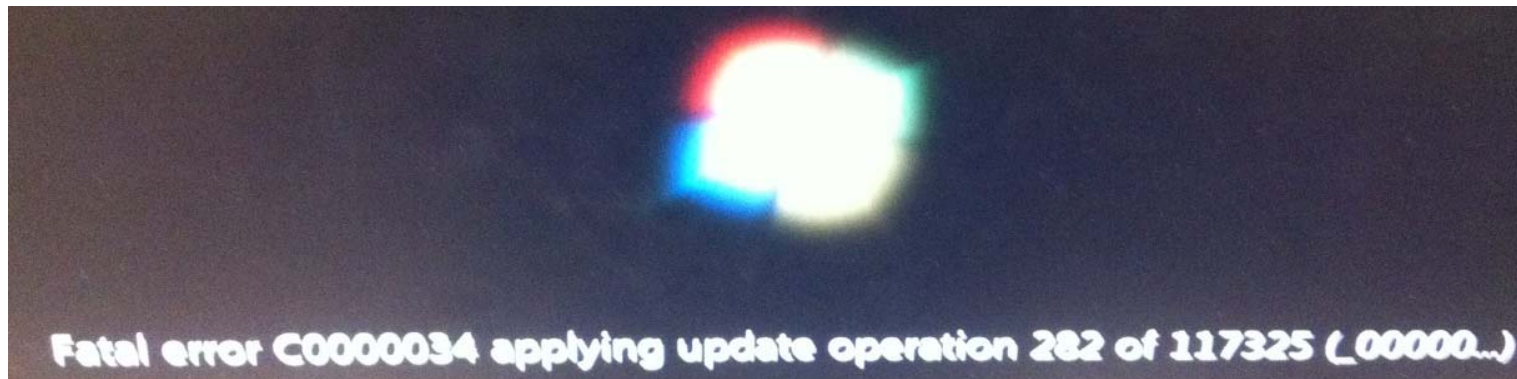
Windows 7 issues

- **SMART Notebook with Windows 7**
 - “When dragging items across the screen the entire display is moving!”
 - To fix it, complete these steps on affected PCs:
 - Go into **Control Panel**, *View by* **Small Icons**
 - Open **Tablet PC Settings**
 - Open the **Other** tab
 - Click on **Go To Pen and Touch**
 - Open the **Panning** tab
 - TURN OFF **Turn On Single Finger Panning**

Windows 7 issues

- **Service Pack 1 (SP1)**

- Was released by Microsoft in early March.
- A problem has been identified affecting only some 64-bit Windows 7 computers.
- Upon reboot after the installation of SP1 a critical error appears, locking the computer.
- If you encounter this error, please log a Service Desk call indicating Windows 7 SP1 critical error.



Windows 7 issues

- **MS Forefront Endpoint Protection (FEP)**
 - This has replaced Symantec AV (Win 7 only).
 - The CPC server does not manage FEP clients.
 - The proposed CPC replacement will manage updates for FEP
 - To update FEP manually, Windows Update should be run, with More updates selected. This invokes Microsoft Update.

Term 1 2011 ICT Update

- T4L and Connected Classrooms
- Windows 7 Issues
- **State Initiatives and News**
- Sydney Region Website Updates
- LMBR – Finance for Schools



ICT – funding 2011

- The Computer Coordinator Funding **2011**
- Based on FTE Teachers in each school:

– 0 – 9.99	\$1,943	60 – 69.99	\$17,125
– 10 - 24.99	\$3,888	70 - 79.99	\$22,963
– 25 - 39.99	\$7,655	80 – 84.99	\$27,458
– 40 – 49.99	\$11,056	85 – 89.99	\$32,075
– 50 – 59.99	\$13,729	90 +	\$36,691
- This amount is provided **each semester**

ICT – funding 2011

- Computer Education Global Grant (**2011**)

Enrol/ Type	0-25	26-400	401-600	601-800	801+
High	\$13,828	\$13,828	\$13,828	\$13,828	\$13,828
K-12	\$5,629	\$5,629	\$7,796	\$7,796	\$7,796
Prim	\$2,186	\$3,294	\$5,509	\$7,724	\$9,940
SSP	\$2,087	\$3,166	\$3,166	\$3,166	\$3,166

- PLUS \$8.62 per student
- This amount is provided **each year**

ICT – funding 2011-Some Examples:

- **Per Semester total ICT Funding:**
 - A High School with 913 students and 61.56 FTE teachers gets **\$27,974**
 - A Primary/Infants School with 292 students and 14.762 FTE teachers gets **\$6,793**
 - An SSP with 37 students and 8.788 FTE teachers gets **\$3,685**
- At an average rate of \$295 per day's relief, these amounts equate to 94, 23 and 12 days per semester respectively

State Initiatives and News

- ***School Biz***, (formerly InPrincipal)
- SchoolBiz is the primary channel for business communication to school staff.
- Inside SchoolBiz you will find important information from state and regional office. SchoolBiz is published every Friday during school term, except for the last Friday of each term.
- The audience for each information piece is marked as being relevant for 'All staff', 'Executive', 'Teachers' and/or 'Admin' staff. All school staff are encouraged to visit their regional SchoolBiz site
- <https://detwww.det.nsw.edu.au/inprincipal/sydney/2011-03-04/index.htm>

State Initiatives and News

- **Breakkie with a Teckkie,**
- **<http://hccweb2.org/bt>**
- **Breakkie with a Teckkie is a collaborative regionally organised DER Video Conference Series focussing on Web 2 Tools use in the classroom. The VC Series is held on Wednesday Mornings from 8:00am to 8:30am.**
- **You must book for each session**
- **The session will be limited to approx 75 sites.**

State Initiatives and News

- **Great Schools Show Off**
- <https://detwww.det.nsw.edu.au/marketing/gss/index.htm>
- **DET Social Media and Networking for Staff Website**
- https://tstdetwww.det.nsw.edu.au/deptresources/templates/socialmedia/aztechnology/r_tech.htm
- **UCREATE** is the title of a series of step-by-step guides that help teachers to create learning resources using techniques like podcasting or making animations. <http://bit.ly/derstage6>
- **School Administrative Manager Toolkit**
- <https://detwww.det.nsw.edu.au/lists/directoratesaz/proflearn/sam/ict.html>

State Initiatives and News

- **SI Group – Software ordering**
- SI Group have updated their website.
DET Employees now order software here:
<http://www.sigroup.com.au/shop-teachers-employees.html>
- They have a K-12 and TAFE students shop with pretty good pricing - <http://www.sigroup.com.au/shop-school-students.html>
- And a NSW Schools shop which includes alternative Adobe products, not in CS5. eg. Photoshop Lightroom and Director
- <http://www.sigroup.com.au/shop-schools.html>

Connected Learning Awards

- *The Connected Learning Awards give students opportunities to design and create digital works for real-life purposes. In doing so, students develop skills in communicating, collaborating, self-directed learning, problem solving, researching and publishing their findings – all essential learnings for the 21st century.*
- *The Connected Learning Awards can be mapped across a range of curriculum areas.*
- *For full details go to;*
<http://www.cli.nsw.edu.au/services/wecreate/awards.htm>
- *For email enquiries contact connectedlearning@det.nsw.edu.au*
- [Connected Learning Awards poster](#)

Connected Learning Awards 2011

DIGITAL ART Portrait	closing 6 APRIL
RADIO NEWS Primary students only	closing 8 JUNE
ANIMATION	closing 29 JUNE
WEB DESIGN	closing 3 AUGUST
GREETING CARD NSW DET schools only	closing 31 AUGUST
SHORT FILM	closing 21 SEPTEMBER
DIGITAL STORY	closing 19 OCTOBER
DIGITAL ART Celebration	closing 2 NOVEMBER

For full details go to http://tiny.cc/the_awards

Principal sponsor



Major sponsors



Supporting sponsors



Presented by



Education & Training
Curriculum & Learning
Innovation Centre

Media Partner



Yammer – Have YOU joined yet?



- Over 10,000 DET staff
- 24hr/day, 7 days/wk PD
- And they are discussing YOUR job and interests.
- YOUR questions.
- They are ANSWERING.
- They are SUPPORTING.
- They are DISCOVERING.
- And they are SHARING.
- But overall, EVERYONE is LEARNING.

Getting Started With Yammer

- <http://tinyurl.com/yammer-guide> - A *beginner's guide to using Yammer*
- Turn off Email Notifications! Many new users think Yammer is all about email and they get turned off because of email overload
- Jump into <http://yammer.com> and click on Company Feed on the left. If you like what someone is saying, Follow them.
- To get Followed yourself, reply to some threads you are interested in

Yammer's Power in Action

- One *Sunday night*, the following question was asked and 147 responses came back:



- ...and this Livebinder was made and shared:
<http://livebinders.com/play/play/65179>

If you or your staff need PD...

- **Yammer is always there to:**
 - *Ask a question*
 - *Get advice*
 - *Share experiences and knowledge*
 - *Stop “reinventing the wheel”*
- **It's self-paced**
- **It's a searchable repository**
- **It's your peers working together.**
Professional collaboration at its best.

Yammer

<http://yammer.com>



NSW Department of Education & Training

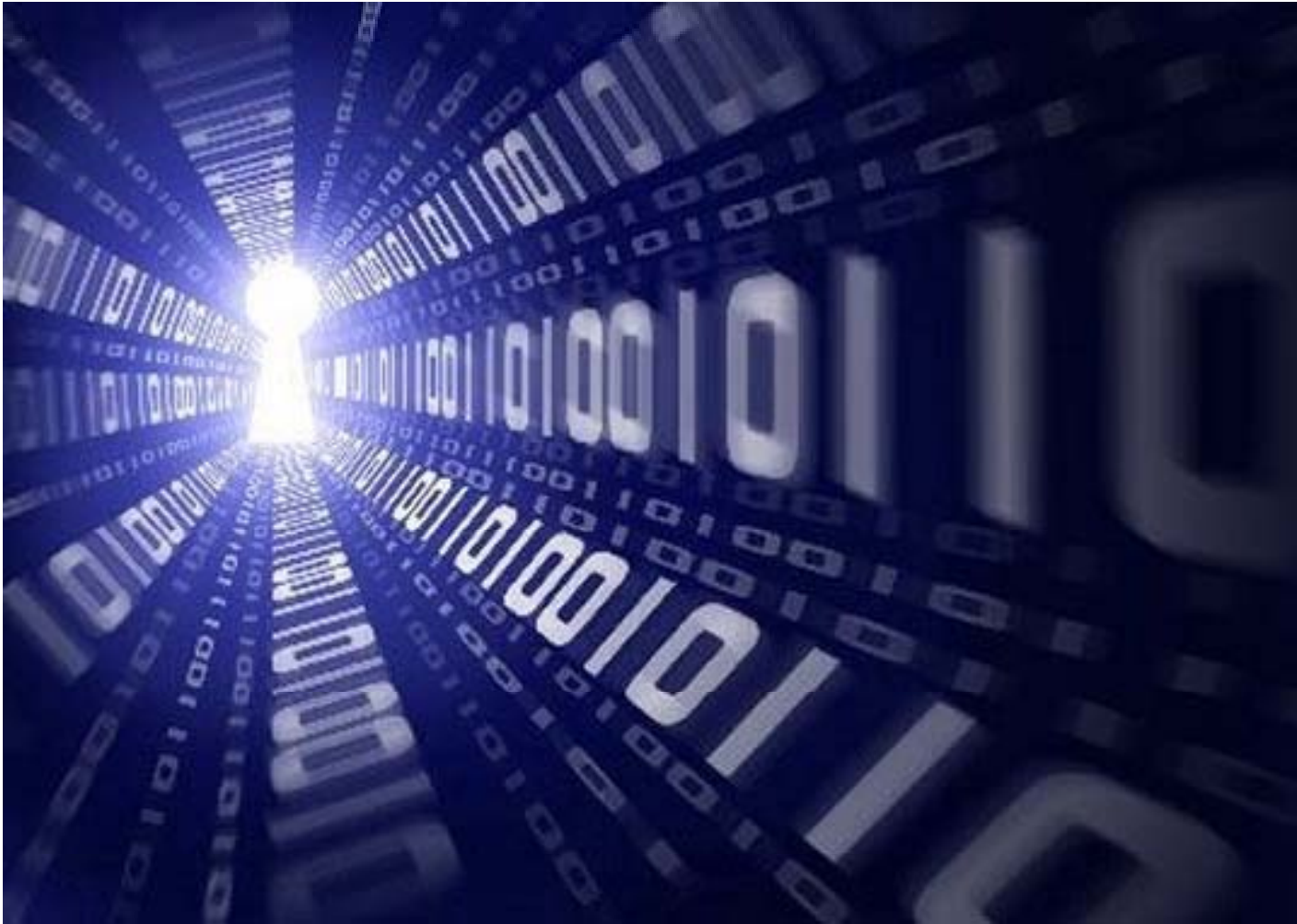
Sydney Region

NSW Public Schools – Leading the Way www.sydneyr.det.nsw.edu.au



**Education
& Training**

Questions or Comments on Yammer?



NSW Department of Education & Training

Sydney Region

NSW Public Schools – Leading the Way www.sydneyr.det.nsw.edu.au



**Education
& Training**

The Fruit Shop



NSW Department of Education & Training

Sydney Region

NSW Public Schools – Leading the Way www.sydneyr.det.nsw.edu.au



**Education
& Training**

Term 1 2011 ICT Update

- T4L and Connected Classrooms
- Windows 7 Issues
- State Initiatives and News
- **Sydney Region Website Updates**
- LMBR – Finance for Schools



Sydney Region Website Update

- As a result of feedback from the Sydney Region customer review, the Sydney Region website has been re designed.
- The new site allows for easier content updating and publishing by multiple authors from Regional offices.
- The site is now searchable.
- www.sydneyr.det.nsw.edu.au

Sydney Region Schools database

- Sydney Region is in the process of developing a schools database that will consolidate schools information into one content store.
- Selected Regional Office staff will keep the data up to date and schools will have access to a web (read only) version of the [database](#).

Projector Lamp Recycling

- With more data projectors in schools there will be more used lamps needing disposal. These lamps contain mercury which has a high level of toxicity.
- In Sydney Region we will be using the services of lamp recyclers to dispose of UNBROKEN lamps responsibly.
- Please store your used lamps temporarily (use the packaging of the replacement lamp) and then bring them with you to the term 2 ICT Information day and we can collect and recycle the lamps.
- Alternatively, drop them off at Bondi Regional Office (attention Bambos Meitani) or Miranda Regional Office (attention Greg Sharkey).
- There are various lamp recycling providers. Three of these are:
<http://www.lamprecyclers.com.au>
<http://www.cmacorp.net>
Epson Australia - Tel: (02) 8899 3666

Term 1 2011 ICT Update

- T4L and Connected Classrooms
- Windows 7 Issues
- State Initiatives and News
- Sydney Region Website Updates
- **LMBR – Finance for Schools**



Final Questions?



NSW Department of Education & Training

Sydney Region

NSW Public Schools – Leading the Way www.sydneyr.det.nsw.edu.au



**Education
& Training**