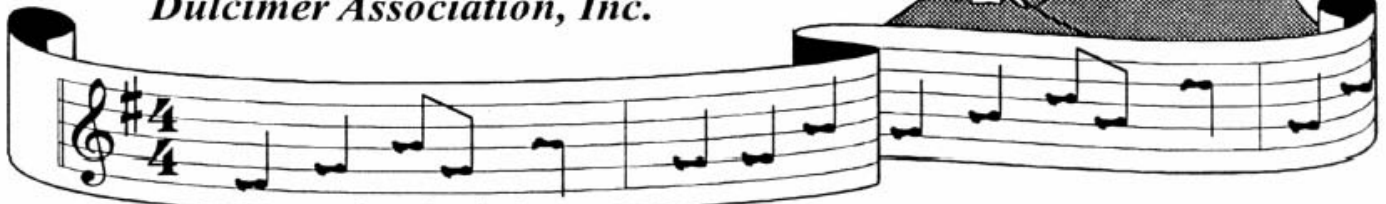


North Georgia Foothills
Dulcimer Association, Inc.

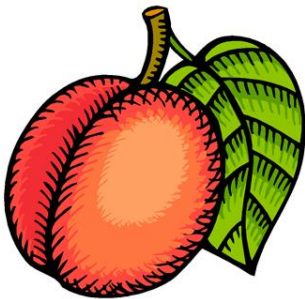


Foothills Footnotes

September 2014

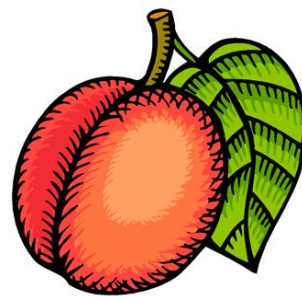
ISSN 1559-1441

Volume 26, No. 9



18th Annual

Peach Jam



Grab your dulcimer and come to the Peach Jam!

October 3 – 5, 2014

**F. D. Roosevelt State Park at Pine Mountain, GA
Camping Area #2, Covered Shelter**

THURSDAY (Oct. 2) For the Earlybirds

- ◆ Leisurely JAMMING & GATHERING around your personal plan day excursions

FRIDAY ALL DAY & EVENING JAM w/ Coffee (6:00p.m. - 10:00 p.m.)

SATURDAY JAM PRESENTATION for the Public

1:00p.m.- 2:00p.m. at the Park Registration Office CCC Amphitheater)

We take chairs and call it organized jamming at the Amphitheater by the now legendary Peach Jam Traveling Pick-up Band©. The Park lists this as a Park NGFDA event. It makes the Park Rangers happy!

We will choose tunes from the 1) NGFDA TAB book ("blue book") D tuning tunes 2)"TAB –Top 13" tunes listed on www.ngfda.org home page. Tunes for the play list will be added and deleted by popular vote of those who show up for Friday evening and Saturday morning JAMs at the campground shelter. This is for ALL playing levels!!!!

We will choose and practice tunes during Friday evening and Saturday morning jam time.

SATURDAY JAMMING ALL DAY under the Shelter (9:30 a.m. - 10:00 p.m.)

Additional Breakout Groups:

- ◆ Breakout: New Beginner Instruction w/ Peggy & Rick Ertz (All day; just ask for them)
- ◆ Breakout Beginner/Adv. Beg. Levels Slow JAM w/ Nancy Larson (2:30-3:30)
- ◆ Breakout Fast Jam – whenever - wherever

Covered Dish Supper on Saturday Night (5:30 p.m.)

Followed by Evening JAM & Coffee

SUNDAY Morning Gospel JAM w/Coffee (10:00 a.m. - 12:00 noon)

Directions: I-185 Exit 34 - Go east on GA 18. Cross US 27. Follow GA 354. The park entrance is on the right. Follow directional signs

What to Bring: Chair, Covered Dish contribution for Saturday evening, instruments

Additional Information:

- FDR has campsites and cabins. Make reservations by calling 1-800-864-7275. Motels are within 1-2 miles of the campground.
- Fishing lake at campground
- Callaway Gardens is located about 2 miles away
- Park parking pass (\$5.00) or State Park Annual Pass is required; Day Pass can be purchased at Park Office or collection boxes throughout Park & campground Trading Post.

Hosted by the NGFDA Peach Jam Team

**2014 NGFDA, Inc.
Board of Directors**

PRESIDENT

MIKE VAN DEMARK
P. O. Box 197

COOEE, TENNESSEE 37361
mvandem@gmail.com
404-822-3666 (MOBILE)
423-338-2307 (HOME)

VICE PRESIDENT

JOHN SHAWHAN

126 SOUTH TAMIE CIRCLE
KATHLEEN, GEORGIA 31047
jshawhan@windstream.net
478-542-0495

TREASURER

MELANIE LIGON

650 WINDWALK DRIVE
ROSWELL, GEORGIA 30076
mligon@kcc.com
770-401-9899

SECRETARY

BARBARA STEVENS

114 OAK LEAF CIRCLE
EATONTON, GEORGIA 31024
gbs468@aol.com
478-457-6539

FALL FESTIVAL DIRECTOR

MIKE VAN DEMARK

P. O. Box 197

COOEE, TENNESSEE 37361
mvandem@gmail.com
404-822-3666 (MOBILE)
423-338-2307 (HOME)

SPRING THING DIRECTOR

KAT VALLISH

kvallish@gmail.com
678-468-7561

LIAISON TO NGFDA SATELLITE
GROUPS

PEGGY MARTIN

martin.pb@comcast.net
770-974-1980

MEMBERSHIP CHAIRMAN

LYNN MCCOLLUM

445 LONG STREET
DEMOREST, GEORGIA 30535
lynnmccollum50@gmail.com
706-778-8538

NEWSLETTER EDITOR

BARBARA JOE

ngfda_footnotes@yahoo.com
931-239-2111 (MOBILE)

NGFDA YAHOO! GROUP MODERATOR

ED HUMPHRIES

ed@humphries.com
770-439-9608

Foothills Footnotes
(ISSN 1559-1441)

POSTMASTER: Send any address changes to **Lynn McCollum**, NGFDA, Inc., PO Box 522, Demorest, GA 30535. You may also contact **Lynn** by e-mail at lynnmccollum@windstream.net. All other newsletter-related matters, including material intended for publication, should be directed to **Barbara Joe** at the email address listed in the above column. The deadline for publication submissions for the October issue is **September 22, 2014 at 6:00 p.m.** *Foothills Footnotes* is published monthly by the North Georgia Foothills Dulcimer Association, Incorporated.

About The Tablature . . .

This month's tab is Tull Glazener's arrangement of a hymn named "To God Be the Glory" by one of America's most prolific hymn writers, Frances Jane VanAlstyne, better known as Fanny Crosby. She is said to have written more than 8,000 poems during her lifetime, the vast majority of which were of a religious nature that eventually were paired with melodies and made into hymns.

Fanny was blind from the age of six weeks, when a common cold caused inflammation around her eyes which was treated with mustard plaster compresses. Her father died when she was barely one year old, and she was raised by her mother and grandmother until the age of 15, when she enrolled in the New York Institute for the Blind. She was a student there for eight years, learning to play guitar and piano, and to sing. Upon graduation, she was offered a faculty position at the same institute, teaching English, philosophy, and science. She published her first collection of secular poems at the age of 24, and also wrote the lyrics for a number of secular songs, most notably collaborating with composer George Root for such songs as "Rosalie the Prairie Flower," "Hazel Dell," and "There's Music in the Air."

Shortly after attending a revival meeting at the age of 28, she began writing religious poems almost exclusively, collaborating with a number of well-known hymn composers of the time, including William Bradbury, Robert Lowrey, Ira Sankey, Phoebe Knapp, and William H. Doane. Doane was an especially frequent collaborator with Crosby, composing the tunes for such well-known hymns as "Near the Cross," "Blessed Assurance," "Pass Me Not O Gentle Savior," "Tell Me the Story of Jesus," and this month's tune, "To God Be the Glory." In spite of the fact that the hymn had been published in the United States in 1872, it remained relatively unknown in this country until

1954, when Cliff Barrows, then the song leader for the Billy Graham Crusades, included it in during a series of revival meetings in London, England. It was so well received that he continued using it, and it quickly gained worldwide popularity. Today it is included in most denominational hymnals.

In Tull's own words:

Nearly twenty years ago, I was given my first mountain dulcimer as a Christmas present. I had grown up playing piano, organ, and several brass instruments all through high school and college, but I had never seen or heard of a dulcimer before. Because it only has three strings, and only half the frets of most stringed instruments, I dismissed it as just a toy, and not a "real instrument." So I thanked the gift-giver profusely, put the dulcimer in a closet, and forgot about it.

Several years later, I happened upon the Central Indiana Folk Music and Mountain Dulcimer Society's annual festival at Eagle Creek Park in Indianapolis, and heard a couple of guest artists performing on the instrument. I was amazed at its versatility and captivated by its sound. I immediately went home and dug my mountain dulcimer out the closet, joined the organization, found a teacher to get me started, and have rarely put it down since.

Upcoming Events

October 3-5, 2014

PEACH JAM at FDR October 3-4-5, 2014: Event will include an appearance of the now legendary Peach Jam Traveling Pick-up Band. FDR State Park has again asked the dulcimers (with miscellaneous acoustic instruments) to appear for public "Dulcimer Jam Performance" at the Park Office Rock Amphitheater

continued on page 6

To God Be the Glory
 Fanny Crosby (lyrics); William Doane (music) - 1872
 Melody

Arranged by Tull Glazener

D A7 D A D G

1. To God be the glor - y, great things He hath done, So loved our He the
 2. Great things He hath taught us, great things He hath done, And our great re

D 0 2 3 3 2 2 2 1 1 1 0 0 0 0 0 1 1 1
 A 0 0 1 2 0 0 0 0 0 0 0 0 0 0 1 1 1
 D 0 0 0 0 0 0 1 1 2 2 3 3

D E7 A7 D A7 D

6 world joy that He gave Je - us His Son, Who yield ed His life, an a
 7 ing through Je - sus the Son, But pur - er, and high - er, a
 8 9 10

D 0 0 0 1 1 1 3 2 3 2 2 2
 A 0 0 0 1 1 1 0 0 0 1 2 0 0 0
 D 2 0 2 2 1 1 1 0 0 0 0 0 0 0

A F# G D A

11 tone - ment for sin, And our op - ened the life gate that all Je - sus go
 12 ar will be, Our won - der, our trans - port, when Je - sus we
 13 14 15

D 1 1 1 2 0 0 0 2 2 2 1 1 1
 A 0 0 0 2 1 1 1 0 2 0 0 0 0
 D 1 1 2 2 4 3 1 0 0 0 2 2 1

D CHORUS Dmaj7 D6 A

16 in. Praise the Lord, Praise the Lord, Let the earth hear His voice! Praise the
 17 18 19 20

D 2 0 0 0 0 0 0 0 0 1 1 1
 A 0 3 3 3 2 2 2 1 1 1 0 0 0
 D 0 2 3 4 2 3 4 4 2 0 1 2 1 1 2

Em A A7 D A7 D

21 Lord, Praise the Lord, Let the peo - ple re - joice! O come to the Fath - er through
 22 23 24 25

D 1 1 1 1 1 3 3 3 0 2 3 3 2 2 2
 A 1 1 1 2 2 2 2 2 0 0 0 1 2 0 0 0
 D 3 1 2 3 3 1 4 4 3 2 0 0 1 2 0 0

A F# G D A D

27 Jes - us the Son, And give Him the glor - y, great things He hath done.

D 1 1 1 2 0 0 0 2 2 2 1 1 1 2
 A 0 0 0 2 1 1 1 0 2 0 0 0 0 0
 D 1 1 2 2 4 3 1 0 0 0 2 2 1 0

Summer Satellite Gathering 2014 Wrap-up

By Peggy Martin, Satellite Liaison



It was a great little NGFDA gathering; we visited, learned, shared, and feasted! Forty early-bird players came into Canton for an enthusiastic Friday evening (slow –moderate) JAM and social. Then, on Saturday, 58 NGFDA Satellite leaders and participants and some enthusiastic newbies attended the workshops, potluck, open stage and concert. Instructor Les Scott's talents and dedication to NGFDA ensemble work had players at all levels focused and looking forward to taking information back to their Satellite meetings. He gave us a treasure trove of information, both in tabbed tunes for ensemble playing and leadership instruction guidance. Then Les surprised us with Paul Andry and Phil Myers who drove in from North Carolina to perform in concert. The two hours of Open Stage were enthusiastically received as Satellite group members of all playing levels went to the stage (yes on microphones!) to share their ensemble music. Of course, another five-star pot-luck lunch was enjoyed by all, and we did it again for dinner with Open Stage. The Canton First Methodist Church Fellowship Hall was spacious and accommodating, and the equally impressive members of the Co-hosting Hilltop Strummers Satellite wowed us with their over-the-top team work and hospitality! A special thanks to the Hilltop Strummers leadership team Jennell Bryan, Bob and Sandra Hange, Dan and Barb Asperger for your efforts to make this an enjoyable event!!

26th Annual NGFDA Fall Festival Registration Begins on September 2

By Festival Director, Mike Van Demark

The past several newsletters have contained information regarding the 2014 Fall Festival. This article serves as a reminder to mark your calendars and make plans to be at Unicoi State Lodge from November 20 through 23, 2014, for workshops, jamming, concerts, vendors and more!

MEMBERSHIP

The Fall Festival is an NGFDA function and therefore offered to membership only. Because the association is large and it fits Unicoi, there is no advertising done outside the membership other than by word of mouth. Please help interested folks understand that a NGFDA membership is necessary in order to receive the monthly *Foothills Footnotes* newsletter, and to

continued on page 5

26th Annual NGFDA Fall Festival

continued from page 4

attend other events of the club along with receiving the Unicoi lodging reservation form, and access to the new online registration process.

The \$20 single membership and \$30 family membership is well worth the assurance that members receive timely information about the Fall Festival and other NGFDA events.

The association is requesting that all members pay the 2015 membership dues through the Fall Festival registration process. This will eliminate any unnecessary reminders having to be sent to members in January. People interested in joining NGFDA can print the membership application form from the www.ngfda.org website and mail it in, or the membership form on the back of the newsletter can be passed on to interested folks. If people join now their membership will be good until December 31, 2015.

REGISTRATION

The registration process will begin on September 2nd and end on October 15th. After the registration process has opened on September 2nd, and you have selected workshops, (from list of workshops on website) you will have to create a log-in name and password (unless you created it in a prior year). This is so that you can enter your personal information into the registration tool. If you already have your login credentials from the prior year you can proceed to the registration process of selecting your workshops, merchandise, membership etc. The form will be saved automatically, and you will be able to go back and make changes until the registration site is closed and/or you have been confirmed through the payment process.

When registering, please check the box if you are willing to volunteer during the festival. NGFDA really appreciates the efforts of all the volunteers.

Once you have completed the registration process online you are given the option to pay the fees by the following credit cards: Visa, MasterCard, Discover and American Express via PayPal. This is a secure website that will automatically notify NGFDA that we have received fees from you and will insure that your registration is confirmed. You will also be given an option to pay your fees using a personal check to NGFDA via US Mail. All fees must be received by NGFDA by October 20th. Confirmations will be sent to your email address once we receive your full payment. **Please be sure that Lynn McCollum has your correct email address on file.**

If total fees are not received by October 20th, your registration will be cancelled and the slot will be opened up to anyone else who might be on a waitlist to come to the fall festival. Fall Festival sometimes has a waiting list since it is limited to only 250 participants. This year the cancellation policy is as follows:

- Full registration fees refunded if cancellation is received by November 1st.
- One-half of fees refunded if cancellation is received by November 8th
- No refund of fees if cancellation is received after November 8th
- Membership Dues and Merchandise purchased will not be refunded

For those members that do not have a computer or any internet access, please contact Mike Van Demark (423-338-2307 leave message if necessary) so that all festival information and materials can be sent to you via US Mail as done in the past.

Once the online reservation process begins on September 2nd, don't wait to register!! Spaces fill up fast and remember just because you have a hotel room reserved at Unicoi or at another facility it does not guarantee a space at the festival.

REGISTRATION COSTS

<i>Full 3 day</i> registration (includes concert tickets).....	\$105
1-Day only registration (no concert tickets included).....	\$55
Children's all day Saturday (ages 6-11).....	\$50

UNICOI LODGING INFORMATION

Unicoi has provided us with a Unicoi Room Reservation form which appears in this newsletter. Members are asked to fax or call the lodge 706-878-2676 before the lodge cut-off date of October 14, 2013. Available rooms will be released by Unicoi to others if you have cancelled your reservation. These rooms are reserved very fast so don't wait to make your reservation. **Please refer to Event #03952 when making reservations by telephone.**

Package Rates Single/Double (1 or 2 people)	
Staying 4 nights or more	\$89.00 Per Night
Staying 3 nights or more	\$99.00 Per Night
1 or 2 night stay	\$109.00 Per Night
Additional per Person Charge (over 2 in room) \$15.00 Per Night	

The above rates include a full breakfast daily. Gratuity for Breakfast is included.

PREPAID MEAL TICKETS AND CHANGES TO THE LODGE

Once again Unicoi will be offering prepaid Buffet Meal Tickets for Lunch and Dinner. These tickets can only be used on the Buffet. Unicoi has made many changes to the lodge and hotel rooms this year. One big change I think everyone will be happy about is the food. I met with our Event Coordinator and the Executive

continued on page 6

26th Annual NGFDA Fall Festival

continued from page 5

Chef of Unicoi and the chef has assured me that we will see a big difference in the buffet food this year. More fresh vegetables more variety of meats and a difference between lunch and dinner items. I had lunch when I visited and the food was really good. This year you will be able to purchase items off a menu in the main dining room and not just have the option of the buffet.

Other changes at the lodge will be the remodeled/refreshed lodge rooms along with a new Vendor area on level 3 of the lodge. All vendors will be on the 3rd level of the lodge this year which will give us more room downstairs to jam and attend workshops without running into excessive traffic.

CONTACT INFORMATION

Should you have any questions regarding the festival and event, or questions regarding the online or manual registration process, please contact Mike Van Demark at 423-338-2307 or email him at: mvandem@gmail.com

Upcoming Events

October 3-5, 2014

continued from page 2

1-2 p.m. on Saturday, October 4. A set list similar to last year will be provided in future posts on the club website and final tune vote and simple arrangement run-through will be held Friday evening and Saturday morning. . . group consensus rules! All playing levels invited. . . something for everyone.

May 1-2, 2015

Keep the date open for Spring Thing 2015 Fort Yargo State Park, Winder, Georgia. Workshop leader to be announced at a later date.

Spotlight on Satellites

Peach Pickers

Peach Pickers are gearing up for another year of dulcimer playing and learning. Peach Pickers has two groups that meet: one at First Baptist Church on Wednesday evenings and another at the Fayette Senior Center on Wednesdays at noon. Peach Pickers lost a charter member, Jan Cauthen, in August. She and her husband, Gene, were two of the first members of the group and donated some dulcimers that Gene made to an elementary school and promoted dulcimer playing. Her obituary is located at McKoon Funeral Home site.

Land of Waterfalls Dulcimer Players

The Land of Waterfalls Dulcimers played on August 17 at St. Phillips Episcopal Church in Brevard. The group plays several times a year for a gracious congregation. The music sounded especially beautiful in the stone church and many members commented on the lovely addition of the

harp, concertina, mandolin and flute to the mountain and hammered dulcimers. The group meets weekly at the church for practice and enjoys the opportunity to play for the Sunday morning service. Plans are underway to invite the nearby Flat Rock Dulcimers and Donuts group in September for a pot luck lunch and a chance to play together.

Sonic Sounds Dulcimer Club

Sonic Sounds Dulcimer Club provided music for an outdoor wedding with a country-western theme at the Green Bell. During the wedding members played "Carolina Waltz" and "Saro Waltz." The bridal party recessed to a rousing rendition of "Black Mountain Rag!" Some of the members played for the senior adults at Central Baptist Church in July. The group always enjoys introducing people to the mountain dulcimer.

Allatooners



The Allatooners participated in the Summer Satellite Gathering in Canton this month. Give thumbs up to the Allatooners that contributed to Open Stage. Sandy Fielder, a gutsy beginner on a cardboard dulcimer playing in trio format played June Apple and did a fantastic job! , Dee Dee Nash and Peggy Martin turned the clock back with the classical tune Paganini's Melody. It wouldn't be an open stage without the Allatooners Ensemble (Judy Griffin, Peggy Martin, Dee Dee Nash, Donna Reyes and Marianne Wurtele). They played a wonderful arrangement of "Go Tell it On the Mountain" and a

continued on page 7

Spotlight on Satellites

Allatooners

continued from page 6

medley of “Star of County Down” and “Rosin the Beau.” This performance helped to bring home the topic of ensemble work that Les Scott was speaking on.

There were many other performers who worked up numbers to play at the Summer Satellite Gathering Open Stage. There was plenty of good food and great music that day. Kudos to ALL of the Satellite group folks who made the effort to share their ensemble work; turning practice into sharing. Thank you to Les Scott who offered ensemble tabs and pointers for the groups to work on in future meetings; good stuff! Fall brings hectic playing schedules to many of the Allatooners who participate in a variety of re-enactments and living history events. But as always, the group explores new tunes and enthusiastically cheers its beginners on at the monthly satellite meetings. Mark your calendar for the second Sunday. Directions at www.allatooners.org.

Frettin' On Faith

The Frettin' On Faith dulcimers have been enjoying the summer and taking it easy. They played a private party on August 9 and were well received. The theme was a luau and the "Steel Begonias," the Caribbean Drum ladies in the group, made it seem as though the party WAS in the islands. The dulcimers ripped through some fast fiddle tunes as many sang along and laughed and enjoyed themselves. The group is looking forward to fall and all the fun festivities that it brings! As they say in Ringgold . . . "Keep On Frettin' " !

Yonah Pickers



Folk Life



Tugaloo State Park

What fun Yonah Pickers has had in the recent month! One weekend in particular provided members the opportunity to participate in two performances in one day, one at Unicoi State Park and one at Tugaloo State Park (see photos); followed by another on the next day; followed by a practice that turned into a third performance on the next! Some members did everything, and others did those things that particularly called to them. The membership is large enough to allow everyone choices. In addition to this multi-playing weekend, they also enjoyed performances for two senior centers and a respite care program during the month. Audience participation is a valued part of any Yonah Pickers' performance, and the participation of the audience is not limited to singing. Some people like to dance and in one location, there is a resident who is a harmonica player with whom the group enjoys sharing the "stage." As new members step up to MC performances, new variety is added to the programs while maintaining the standard repertoire with which the audiences have expressed their enjoyment.

The group has changed its Sunday practice location. They are now meeting at the First Presbyterian Church in Cleveland. The time remains the same. Monday practices remain unchanged. The group has been truly blessed by the generosity of the local churches in providing free practice locations over the years. No new instruments to report this month, but there is always next month! If your travels bring you into White and/or Habersham counties, you are always welcome to stop in at any practice. All instruments and all ability levels are welcome. For more information on anything in this article, please contact: bswhitmire@windstream.net



GROUP INDIVIDUAL RESERVATION FORM

POLICIES

Additional discounts are not valid in conjunction with any special promotion, discount rate or group rate.

8% occupancy tax and 7% sales tax added to all rooms, unless an INDIVIDUAL tax-exempt certificate is furnished in advance. Please note that individuals are not covered by a state tax-exempt certificate for master billing purposes. Payment for guestroom charges must be paid by agency check and a copy of the exemption certificate must be presented in advance or at check in to receive individual tax-exempt status.

A \$5.00 Georgia State Park Pass valid for the duration of your stay will be assessed on all vehicles.

**Reservations must be made by
October 19, 2014**

Reservations received after cut off date will be subject to prevailing rates and availability. There is a 2-night minimum for groups booked over weekend dates. Special requests are honored where possible but **ARE NOT GUARANTEED**.

Please note that your room(s) and rates are reserved within a negotiated block of rooms. A credit card guarantee or a deposit for the first night stay is required to hold all reservations. **Reservation must be cancelled at least 30 days prior to event to receive refund.**

We love pets, but they are not permitted in guest rooms. We do have a limited number of dog friendly cabins. Please call for more information. Additional fees do apply.

Fax Completed Form to: 706-878-2676
Mail Checks and Completed Form to
Unicoi State Park & Lodge
1788 Highway 356
Helen, GA 30545

Check-in Time: 4 p.m.
Check-out Time: 11 a.m.

Lodge rooms contain two double beds (max occupancy 4), some rooms also have a carpeted sleeping loft with twin mattresses (reached by climbing a ladder, the room with loft accommodates 6).
While at Unicoi, you may be reached at 706-878-2201.

Visit us at www.unicoilodge.com

Name of Group **North Georgia Foothills Dulcimer Association 2014**

Event #03952 **To make telephone reservations 800-573-9659**

Dates **November 19-23, 2014**
Package Rates Single/Double
Staying 4 nights or more **\$89.00 Per Night**
Staying 3 nights **\$99.00 Per Night**
1 or 2 night stay **\$109.00 Per Night**
Additional per Person Charge (over 2) **\$15.00 Per Night**

These rates include Daily breakfast buffet for two-Gratuity Included

Arrival Date _____

Departure Date _____

Name _____

Address _____

City _____ State _____ Zip _____

Daytime Phone No. _____

Evening Phone No. _____

E-mail Addresses _____
(optional)

Accommodation Requirements _____

No. of Adults _____ No. of Children _____

Every effort will be made to honor special requests; however, due to fluctuating guest counts, they are not guaranteed.

Sharing room with _____
(all share with guests must register at front desk in order to provide proper telephone forwarding and for security purposes).

Please indicate your preferred method of payment.

Credit Card Visa AMEX
MasterCard Discover

Credit Card # _____

Expiration Date: _____

Verification # (3 numbers on back of card): _____

Signature _____

Check Enclosed Check number _____

Make Check Payable to: **Unicoi Lodge**

CONFIRMATION WILL BE SENT UPON REQUEST AND RECEIPT OF PREPAYMENT.

SATELLITE	AREA	FREQUENCY	TIME	LOCATION	CONTACT
Allatooners	Kennesaw, GA	Monthly, 2 nd Sun.	1:30-4:00	First United Lutheran Church of Kennesaw 3481 Campus Loop Rd (formerly Frey Lake Rd.)	Peggy Martin 678-478-2456 martin.pb@comcast.net www.allatooners.org Satellite Scribe: Diana (DeeDee) Nash muffyqnash@yahoo.com
AlphaFretters					Not Currently Meeting
Bent Tree Strings	Jasper, GA	Monthly, 4 th Thurs.	2:30-4:30	Club Tamarack Dining Room in Bent Tree. Bent Tree is 6 miles east of Jasper off Cove Road.	Carol Lesley 770-893-2019 Carol.Lesley@tds.net
Blue Ridge	Blue Ridge, GA	Bimonthly 1 st & 3 rd Mondays	1:00-3:00	Shepherd of the Hills Lutheran Church Hwy. 515 at Forge Mill Road	Anne Bailey 706-632-3854 Teri Godfirmon terig@windstream.net
Currahee Dulcimer Club	Toccoa, GA	Weekly-Thursdays Beginners Group	6:30-7:00 7:00-8:30	Stephens County Senior Center 55 Roselane	Joe and Jan Sibley 706-886-7407 jinja717@yahoo.com
Dalton Dulcimers	Dalton, GA	Weekly Wednesdays	2:30	First United Methodist Church 500 S. Thornton Ave.	Sherry Patterson 706-278-7256 jspatts@windstream.net
Frettin' On Faith	Ringgold, GA	Weekly Sundays	4:00	First Baptist Church downtown Ringgold on U.S. Highway 41 (Nashville St.) in the choir/music room	Michael Whitfield 706-673-6730 mewhitfield@optlink.us Website: www.tiptopwebsite.com/frettin
Gainesville Strummers	Gainesville, GA	Weekly – Thurs.	1:00-3:00	First Baptist Church Room 208, 751 Green Street, N.W.	Bob Weaver 770-540-5278 bobweaver6@gmail.com.
Garden City Strummers	Augusta, GA	Monthly, 3 rd Mon.	6:00-8:00	Please call to confirm location Marks Baptist Church 1405 Marks Church Rd.	Gene Griner 706-733-1900 hgriner@bellsouth.net Pat Colbert 706-860-3437 pogosbill@aol.com
Gwinnoters	Lawrenceville, GA	Monthly, 3 rd Sun.	1:30-4:30	Fairview Presbyterian 857 Duluth Hwy. (Hwy. 120)	Gwen Caeli 678-863-4342 gwencaeli@gmail.com Nora Roy 770-963-2541 nsr45@charter.net
Hilltop Strummers	Woodstock-Canton, GA	Weekly – Tues.	1:30-3:30	Canton First UMC 930 Lower Scott Mill Road, Canton, GA Exit 16 at I-575	Dan or Barbara Asperger 678-493-6970 (H); 770-633-1987 (C) daasp@windstream.net or bjasperger@gmail.com
In Town Down Home	Atlanta, GA	Monthly, 3 rd Sat.	2:00	Tenth Street United Methodist Church 425 Tenth Street, NW	Cathy Watts 770-393-3454 chwatts@mindspring.com
LaGrange Dulcimer Troupers	LaGrange, GA	Weekly, Thurs. mornings	10:45- 12:15	First United Methodist Church for jamming & prac.	Ann and Perry Wilder 706-882-5027 perrywilder@bellsouth.net
		Weekly, Tues.	11:30	Beginning classes	
Land of Waterfalls Dulcimer Players	Brevard & vicinity, NC	1 st , 2 nd & 3 rd Wed.- Practice 4 th Wed.-Playouts	1:00-2:30	St Philip's Episcopal Church 256 East Main St Brevard, NC	Mary Sherwood 828-966-9628 sherwood@comporium.net Ann Brown 828-877-5506
Middle Georgia Dulcimer Club	Macon, GA	Monthly, 2 nd Sat.	1:00 Lesson 2:00-4:00 Jam	Young America School of Music 6361 Zebulon Road	Barbara Stevens 478-457-6539 gbs468@aol.com Karen Stewart 478-954-6759 galadybug53@gmail.com
Mountain Sounds	Blairsville, GA	Bimonthly 2 nd & 4 th Tues.	1:30-3:30	Senior Center	LaDale Trimble 706-946-6070 raydale@etcm.com
Oconee Belles & Beaus	Salem, SC	Bimonthly, 2 nd Thurs. 4 th Tues.	2:00-4:00 1:00-3:00	Keowee Key (Routes 130 & 183 So. of Salem, SC) Activity Center, Whitewater Room	Joan Krech 864-944-7094 joankrech@bellsouth.net Bonnie Lamarand 864-888-3328 lmrd@att.net
Peach Pickers	Peachtree City, GA	Monthly, 2 nd . Sun.	3:00-5:00	The Bridge Community Center 208 Willowbend Road	Pat Hobson 770-461-2522 pohobson@gmail.com Wanda Dawkins 678-899-0453 hrwmdawk@yahoo.com
SEHDP (Southeastern Hammered Dulcimer Players)	Support Group for Local HD Satellites	www.SEHDP.com for Individual Satellite Info.			www.sehdp.shutterfly.com Patsy Jordan sehdpmail@gmail.com
Sonic Sounds Dulcimer Club (EDIMGIAFAD)	Centerville, GA	Weekly, Thurs.	6:00-6:30 Lesson 7:15-Jam	1 st United Methodist Church 600 N. Houston Lake Rd.	Laneah Maddox 478-971-8223 912-687-3621 laneahmaddox@yahoo.com http://wrmusic.tripod.com/sonicsoundsdulcimerclub
Whistle Stop Pickers	East Alabama/ West Georgia (Auburn-Opelika area)	Weekly, Sat.	1:00-3:00	Lee County Historical Society Museum 6500 Stage Road (Hwy 14) Loachapoka, AL	Allen & Deborah McCord 334-821-1301 334-703-3646 (cell) mccord0304@gmail.com
Yonah Pickers	Clarkesville, GA Helen, GA	Bimonthly 1 st & 3 rd Mon. Bimonthly 2 nd & 4 th Sun. Bimonthly-Beginners 1 st & 3 rd Mon. before regular group.	2:00-4:00 2:00-4:00 1:00-2:00	Bethlehem Baptist Church in Clarkesville Helen Presbyterian Church in Helen Bethlehem Baptist Church in Clarkesville	Lynn McCollum 706-499-3212 Lynnmcollum50@gmail.com Email lynnmccollum50@gmail.comfor details.

NGFDA sanctions these groups as satellites, but each one sets its own agenda, meeting place and procedures.

Last Updated 06/22/2014

NGFDA Membership Form

Please start/renew my membership in NGFDA, including a subscription to the monthly *Foothills Footnotes* newsletter. Tab books available to members only, one copy per member at a cost of \$10 (if mailed, add \$2 mailing fee). Individual membership: \$20. Family membership: \$30. Please make checks payable to NGFDA. Dues, according to NGFDA bylaws, are renewable each November regardless of when you join.

Name _____

Address _____

City _____ State _____ Zip _____

Home Phone _____ E-mail address*: _____

Membership Status (check one): New Renewing

Playing Level (check one): Beginner Intermediate Advanced

***Members can automatically access our monthly newsletter at www.ngfda.org by clicking "newsletter" and entering your email address as listed above. The newsletter is posted around the 25th of each month.**

I wish to get my newsletter on the NGFDA website by email by mail

Do you want to order a Tab Book? (check one) Yes / No

Please add \$12.00 for Tab Book and postage
Tab Book

\$ _____

Membership Fee \$ _____

Total Enclosed \$ _____

Mail membership form and payment to: **NGFDA P.O. Box 522 Demorest, GA 30535**

North Georgia Foothills Dulcimer Association
www.NGFDA.org
Post Office Box 522
Demorest, Georgia 30535
United States of America

