

# Bureau of Statistics and Plans

## Fiscal Year 2015 Proposed Budget



**Government of Guam  
Fiscal Year 2015**

Agency Budget Certification

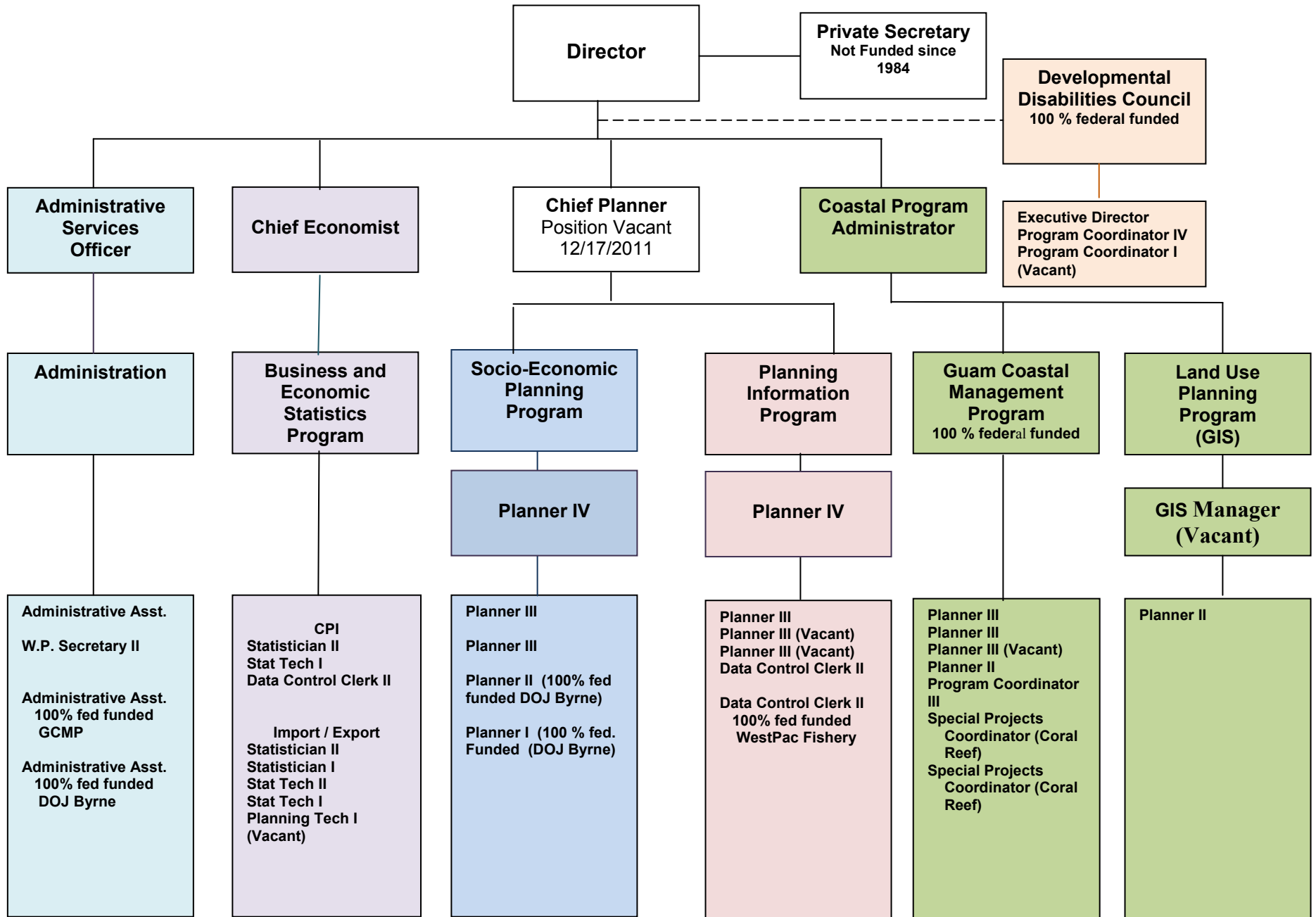
Agency: BUREAU OF STATISTICS AND PLANS

Agency Head: LORILEE T. CRISOSTOMO

I certify that the attached budget, submitted herewith, has been reviewed for accuracy and that all requirements by the Bureau of Budget & Management Research (BBMR) have been met. I also acknowledge that this budget document will be returned to this department if any of the BBMR requirements is not met.

Agency Head:  Date: 2.24.2014  
(Signature)

**Bureau of Statistics and Plans  
Organizational Chart  
Fiscal Year 2015**



**Government of Guam  
Fiscal Year 2015 Budget  
Department/Agency Narrative**

**FUNCTION:** Executive Direction

**AGENCY:** Bureau of Statistics and Plans

**MISSION STATEMENT:**

Public Law 20-147, as amended by Public Law 26-76, stipulates in statute that it is the Bureau's responsibility to undertake any planning activity that is not being carried out or that is not the function of another department. The Bureau has the legislative flexibility to appraise, coordinate, prepare and assist in the development of a wide range of plans, policies and studies that further economic social, land use, environmental and infrastructure goals, priorities and planning activities. This flexibility is reflected in the Bureau's mission statement. It is further mandated to disseminate and make available economic, social, and physical data and information for researchers, policy makers and the public.

The mission of the Bureau of Statistics and Plans is to ensure Guam's resources are effectively used for the benefit of present and future generations by ensuring consistency among various plans, policies and programs.

In order to do this, the Bureau is committed to the goals and objectives that will reflect the following:

- Serve as a catalyst for planned and balanced economic, social, environmental and physical growth;
- Advise the Governor during the formulation of policies and on the interrelationships among laws, plans, policies and programs;
- Provide oversight during the formulation and integration of plans, policies and programs which further social, economic, environmental and physical development goals and priorities;
- Encourage private / public partnerships in the formulation and implementation of plans, policies and programs;
- Ensure the availability of information generated by the Government of Guam for policy and plan development;
- Provide technical and support to other Government of Guam entities in order that they can meet their missions; and
- Ensure the availability of timely and accurate statistical indices that are required to make sound decisions to improve Guam's economic viability.

## **GOALS AND OBJECTIVES FOR FISCAL YEAR 2015**

### **Goal:**

Have an up-to-date information system and data bank for the continual collection, storage and dissemination of public information needed or utilized in the development plan and policy formulation process.

### **Objectives:**

- Ensure the continued availability of an information system and data bank for the continual collection, storage, and dissemination of public information needed or utilized in the development plan process.
- Maintain an information system and data bank for the collection, storage and retrieval of social and economic planning information.
- Maintain an information system and data bank for the collection, storage and retrieval of land use planning information.
- Ensure the availability of annotated bibliographies on documents containing social, economic, physical and environmental planning information related to Guam.
- Establish an updated island-wide base map for the Geographic Information System.
- Continue updating the island wide base map for the GIS.
- Continue the input of lot and overlay data for immediate utilization in development review
- Assist in the development of information sharing systems with other government agencies
- Oversee the continued development and linkage of the Criminal Justice Area Wide Network System and the linkage of the network to national criminal justice networks.
- Coordinate with other Government of Guam agencies to ensure maximization of infrastructure efforts.
- Coordinate with other Government of Guam agencies to enable the development of a comprehensive Geographic Information System.
- Create and maintain a web page that contains State Data Center information related to the U.S. Census Bureau and other social and economic statistical information.
- Continue the inventory and use analysis for public properties.
- Provide technical assistance and training in data processing and analysis using statistical and GIS software applications to generate the required output for data users.

### **Goal:**

Promote and foster the use and preservation of Guam's land and ocean resources and ensure consistency with the plans, policies, laws and programs to ensure that Guam's resources are used effectively.

**Objectives:**

- Ensure private and government development do not negatively impact upon the island's environment and socio-economic fiber.
- Review all development applications for human and environmental impact.
- Coordinate with other government agencies to insure maximization of benefits of infrastructure efforts.
- Review and monitor proposed use and or disposition of public properties to assure compliance to local policies, laws, executive orders, rules and regulations and government plans.
- Ensure proposed expansion of military activities do not negatively impact upon the island's environment and socio-economic fiber.

**Goal:**

Conduct, or cause to be conducted, investigations, studies, surveys, research and analysis relating to the physical, human, social and economic development of Guam and to publish the results thereof.

**Objectives:**

- Conduct studies and publish annual report on the Impact of the Compact for Governor's release to Congress by February 1st.
- Identify, research, analyze and prepare studies and briefing papers on federal constraints.
- Conduct special tabulations analysis using the Census Public Use Micro data Sample file.
- Conduct and publish statistical reports through the compilation and analysis of data resources to provide key demographic and socio-economic information on Guam including the *Atan I Islan Guam*, visitor arrivals and labor force data.
- Conduct surveys, analyze the data, determine trends and publish the results of key economic indices: gross domestic product, economic growth, trade balances, imports, exports and consumer price index, with the consumer price index and gross domestic product being the highest priorities.
- Ensure 2000 census data and information relevant to Guam is readily accessible to the public.
- Collect information on the health of pelagic fisheries and other fisheries in Guam's Exclusive Economic Zone required to promote the development of Guam's fisheries economic sector.

**Goal:**

Prepare plan elements that are not the function of staff or line agencies.

**Objectives:**

- Ensure Violent Crime and Drug Control and Systems Improvement Strategic Plan is responsive to changes in crime patterns and to system wide criminal justice improvements.
- Develop and recommend policies that foster and promote the improvement of the planning activity.
- Ensure that assessments of the anticipated impact of military build-up are conducted and ensure that they are responsive to Guam's social, cultural, economic development, environment needs

**Goal:**

Coordinate federal programs to ensure Guam's priorities and policies are met; while ensuring that they are consistent with federal directives.

**Objectives:**

- Administer the Edward Byrne Memorial State and Local Law Enforcement Assistance Grant Program and the Byrne Justice Assistance Grant Program, monitor Guam's strategic plan's implementation, oversee subgrantees' use of federal funds, ensure effective programs are implemented, and annually evaluate the effectiveness of the strategy to meet Guam's goals.
- Administer the Residential Substance Abuse Program which provides residential drug treatment services to inmates.
- Administer the Project Safe Neighborhood in close coordination with the Guam's U.S. Attorney and with Guam and federal law enforcement entities to stop gun violence.
- Administer the Coastal Zone Management Grant Program which provides Guam with the ability to protect its environment and enables Guam to plan for and coordinate a wide range of community and natural resource development, conservation and management activities and issues.
- Assess federal grant-in-aid applications and state plans to determine impact and consistency with Guam's policies and provide recommendations to the Guam State Clearinghouse.
- Maintain familiarity with upcoming new grant programs and provide guidance on the assignment of new formula grant programs to the appropriate department.
- Advise departments on the availability of discretionary grant programs as notices are received by the Bureau of Statistics and Plans.
- Administer federal grants through the U.S. National Marine Services that pertain to pelagic fisheries.

**Goal:**

Advise the Governor during the formulation of policies and on the interrelationships among plans, policies and programs.

**Objectives:**

- Serve as advisory staff and coordinate Guam's participation in national, regional, international organizations, keep the Governor informed on issues, and assist in the formulation of Guam's policies as they relate to these organizations:
  - South Pacific Community
  - Economic and Social Commission for Asia and the Pacific
  - Pacific Basin Development Council
  - Western Pacific Regional Fisheries Management Council
  - Coral Reef Initiative Task Force
- Assist the Governor and his staff in the coordination of activities amongst various government agencies.
- Advise the Governor, as requested.
- Advise the Governor on the relationships among plans, policies and programs.

**Goal:**

Ensure the Bureau of Statistics and Plans has the executive direction, administrative and financial support necessary for the implementation of its programs.

**Objectives:**

- Participate and input into various committees and task forces.
- Initiate, direct and review the activities of all sections within the Bureau
- Continue to develop the capabilities of the Bureau's staff.
- Provide administrative and fiscal assistance to the Bureau's Planning Information Program, Land Use Planning Program, Coastal Zone Management Program, Business and Economic Statistics Program and Socio-Economic Planning Program sections and the Guam Developmental Disabilities Council.



**Decision Package  
FY 2015**

Department: Bureau of Statistics and Plans

Division/Section: Administration

**Program Title:**

**Activity Description:**  
 The Administration Section is responsible for providing executive direction and for providing administrative and financial support necessary for the effective implementation of the Bureau's programs. While Administration has no purview over setting the executive direction of the Guam Developmental Disabilities Council, the Bureau is mandated by Executive Order 94-09 to provide financial administrative support to the Council. The Administration Section is also responsible for ensuring the achievement of the Bureau of Statistic and Plan's Mission to ensure Guam's resources are effectively used for the benefit of present and future generations by ensuring consistency among various plans, policies and programs and for overseeing comprehensive plan development activities. As it is responsible for executive direction, Administration initiates, directs and reviews the activities of all the Bureau's Sections. It is responsible for advising the Governor and assisting the Governor and his staff in the coordination of activities amongst various government agencies. Lastly, it participates in various committees and task forces.

**Major Objective(s):**  
 1. Ensure executive guidance is provided to all of the Bureau's programs.  
 2. Ensure all of the Bureau's Programs and the Guam Developmental Disabilities Council are provided appropriate administrative and fiscal support.  
 3. Keep the Governor advised during the formation of policies and on the interrelationships among laws, plans, policies and programs.

**Short-term Goals:**  
 1. To initiate, direct and review the Bureau's work program and ensure that they are consistent with the Governor's policies and priorities and the Bureau's mandates.  
 2. Ensure staff's capabilities are continuously upgraded.  
 3. Ensure full compliance with all of the Government of Guam's Personnel Rules and Regulations.  
 4. Ensure full compliance with all of the Government of Guam's fiscal and financial policies, procedures, rules and regulations.  
 5. Ensure full compliance will all U.S. Office of Management and Budget Grant Management Circulars.  
 6. Ensure full compliance with all fiscal and program policies pertaining to the management of federal funds promulgated by the U.S. Departments of Commerce, Justice and Health and Human Services.  
 7. Promote the coordination of activities amongst various government agencies.  
 8. Serve as a Point of Contact and coordinate Guam's participation in national, regional and international organizations.

<b>Workload Output</b>			
<b>Workload Indicator:</b>	<b>FY 2013 Level of Accomplishment</b>	<b>FY 2014 Anticipated Level</b>	<b>FY 2015 Proposed Request</b>
Full compliance with all federal fiscal grant management requirements.	<b>100%</b>	<b>100%</b>	<b>100%</b>
Full compliance with Government of Guam fiscal management requirements.	<b>100%</b>	<b>100%</b>	<b>100%</b>
Executive guidance is provided to all of the Bureau's programs.	<b>100%</b>	<b>100%</b>	<b>100%</b>
Governor is advised during the formation of policies and on the interrelationships among plans, policies and programs.	<b>100%</b>	<b>100%</b>	<b>100%</b>
Ensure Guam has input into national fisheries policies by ensuring technical assistance is provided to the Governor's Representatives on the Western Pacific Fisheries Regional Mgmt. Council	<b>100%</b>	<b>100%</b>	<b>100%</b>

I  
**Decision Package**

**FY 2015**

**Department:**

**Bureau of Statistics and Plans**

**Division/Section:**

**Planning Information Program**

**Program Title: Planning Information Program**

**Activity Description:**

The Bureau of Statistics and Plan's Planning Information Program is responsible for facilitating the delivery of economic, social, and physical data to planners, researchers, and individuals with information requirements for government-wide planning and policy making purposes. The Planning Information Program is responsible for determining the impact caused by the Compacts of Free Association and publishing studies related to the migration of Compact citizens to Guam; supporting data dissemination activities through the Guam State Data Center's participation in the U.S. Census Bureau's State Data Center Program; and overseeing the federally funded Western Pacific Information Network (WPacFIN) program for the collection, processing, analysis, and management of fisheries data used to develop, implement, and evaluate fishery management plans for Guam and the Western Pacific region.

**Major Objective(s):**

1. Disseminate and make available key demographic and socio-economic on Guam for research and public use.
2. Disseminate and make available Census Bureau products (Demographic Profile, Detailed Cross Tabulations, and Public Use Microdata Sample (PUMS)) and conduct special tabulations as requested by data users.
3. Prepare annual assessment and report to the U.S. Congress on the Impact of the Compact of Free Association on Guam.
4. Provide technical assistance and support to Government of Guam agencies needing assistance in the compilation, analysis, and development of statistical reporting programs, including but not limited to visitor arrivals and labor force data processing.
5. Collect, compile and report fisheries data to the National Marine Fisheries Service and the Western Pacific Regional Fishery Management Council under the Western Pacific Fishery Information Network (WPacFIN) needed for the development of fisheries management plans.

**Short-term Goals:**

1. To conduct or cause to be conducted investigations, studies, surveys, research and analysis relating to the human, social and economic development of Guam and to publish the results thereof.
2. To conduct or cause to be conducted data analysis and report writing courses to maximize the Government of Guam's efforts to effectively interpret and disseminate demographic, social and economic information on Guam.
3. To ensure the delivery of economic, social, and physical data and information to planners, policy makers and individuals with public information requirements.
4. To support the evaluation, development, and implementation of fisheries management plans for Guam and the Western Pacific region.
5. To improve communication between producers and users of data, develop a more coordinated flow of data and information between agencies, and to provide direct assistance to agencies with data needs.

**Workload Output**

Workload Indicator:	FY 2013 Level of Accomplishment	FY 2014 Anticipated Level	FY 2015 Proposed Request
<b>Compact Impact Annual Report</b>	<b>100%</b>	<b>100%</b>	<b>100%</b>
<b>Guam's Facts and Figures Brochure</b>	<b>100%</b>	<b>100%</b>	<b>100%</b>
<b>Planners Bookshelf Newsletter</b>	<b>100%</b>	<b>100%</b>	<b>100%</b>
<b>Guam Statistical Yearbook</b>	<b>100%</b>	<b>100%</b>	<b>100%</b>
<b>Guam Statistics Website</b>	<b>Quarterly Updates</b>	<b>Quarterly Updates</b>	<b>Quarterly Updates</b>
<b>Guam State Data Center Activities</b>	<b>100%</b>	<b>100%</b>	<b>100%</b>
<b>Support To Fiscal Stabilization and Sustainability Plan</b>	<b>100%</b>	<b>100%</b>	<b>100%</b>
<b>Interjurisdictional Fisheries Act Semi-Annual Report</b>	<b>100%</b>	<b>100%</b>	<b>100%</b>
<b>Western Pacific Fisheries Information Semi-Annual Report</b>	<b>100%</b>	<b>100%</b>	<b>100%</b>
<b>Business Sector Disaster Damage Assessment</b>	<b>0%</b>	<b>100%</b>	<b>100%</b>
<b>Technical Assistance, Tabulations, and Statistical Processing</b>	<b>100%</b>	<b>100%</b>	<b>100%</b>

**Decision Package**  
**FY 2015**

**Department:** Bureau of Statistics and Plans

**Division/Section:** Business and Economic Statistics Program

**Program Title:** **Business and Economic Statistics Program**

**Activity Description:**

The Business and Economic Statistics Program, under the Economic Research Center, collects, compiles, develops, analyzes, disseminates and publishes quality scientific indices and economic indicators, including but not limited to, economic growth, trade, balances, exports, imports, consumer prices, and other information relating to economic conditions. Core data generated by the division includes the Quarterly Consumer Price Index, the Quarterly Import and Export Trade Data publications. While some business and economic data continues to be gathered by statistical technicians, the information must be evaluated and analyzed along with other economic and social factors to provide a complete and accurate picture of the island's economy. The Chief Economist is responsible to analyze, evaluate, and report on economic policies and external conditions affecting Guam's economy; develop and design the data indices need; and supervise and apply quality controls and adjustments to validate the statistical results.

**Major Objective(s):**

1. To provide business and economic statistical data affecting the economy to the community of Guam.
2. To ensure the availability of timely and accurate statistical indices that are required to make sound decisions to improve Guam's viability.
3. Interpret, validate, and publish statistical results of key economic indices, with the Consumer Price Index being the highest priority.

**Short-term Goals:**

1. To collect, compile, and publish the analysis of social and economic indicators, including but not limited to, economic growth, trade balances, imports, exports, movement of consumer prices, and other information related to economic conditions on Guam.
2. To enhance the coordination among all government agencies with regard to economic development and promoting Guam's position as a regional center for business, trade, and commerce.
3. To provide coordination and assistance to federal and external agencies in the collection and compilation of business and industry information.

**Workload Output**

Workload Indicator:	FY 2013 Level of Accomplishment	FY 2014 Anticipated Level	FY 2015 Proposed Request
<b>Quarterly Consumer Price Index</b>	<b>100%</b>	<b>100%</b>	<b>100%</b>
<b>Guam Import Trade Data</b>	<b>100%</b>	<b>100%</b>	<b>100%</b>
<b>Guam Export Trade Data</b>	<b>100%</b>	<b>100%</b>	<b>100%</b>
<b>PL29-113 Bi-Annual Report</b>	<b>100%</b>	<b>100%</b>	<b>100%</b>

Department: Bureau of Statistics and Plans

Division/Section: Socio-Economic Planning Program

**Program Title:** Socio-Economic Planning Program

**Activity Description:**

The Socio-Economic Planning Program is the service delivery unit within the Bureau that has the flexibility to appraise, coordinate, prepare and assist in the development of a wide range of plans, policies and studies that further economic, social and infrastructure goals, priorities and planning activities. In this capacity, the Program provides direct planning support for the criminal justice system, economic development, fisheries development and military expansion integration. This Program also assist in coordinating Government of Guam's participation and involvement in national, regional, and international organizations to ensure Guam has input in the policies. Lastly, this Program evaluates applications for federal grants for Intergovernmental Review and the Guam State Clearinghouse to ensure that they are consistent with Guam's laws and policies.

**Major Objective(s):**

1. Ensure plan elements that are not the function of staff or line agencies are prepared.
2. Ensure the Governor is advised during the formulation of policies and advise the Governor on the interrelationships among plans, policies and programs.

**Short-term Goals:**

1. Administer U.S. Department of Justice federal grant programs. Ensure federal funds are expended in a manner that adheres to local and federal laws and regulations.
2. Coordinate and provide direct planning support to Guam's criminal justice system by preparing a strategic plan, the monitoring of the strategy's implementation; and assessing the effectiveness of the strategy to meet goals.
3. Coordinate and provide direct planning support and technical assistance for economic and fisheries development planning.
4. Coordinate federal programs to ensure Guam's priorities and policies are met, while ensuring they are consistent with federal directives.
5. Ensure a coordinated approach to Guam's participation in national, regional, international organizations, such as the National Governor' Association, Western Governor's Association, Secretariat of the Pacific Community, and Western Pacific Regional Fisheries Management Council.

**Workload Output**

Workload Indicator:	FY 2013 Level of Accomplishment	FY 2014 Anticipated Level	FY 2015 Proposed Request
Prepare Guam's Multi Year Strategy for Drug Control, Violent Crime and Criminal Justice Systems Improvement that covers FY 2013-2016 in collaboration with the Bureau's stakeholders	100%	0%	0%
Update Guam's Multi Year Strategy for Drug Control, Violent Crime, and Criminal Justice Systems Improvement (Fiscal Years 2013-2016).	0%	100%	100%
Prepare and submit the Residential Substance Abuse Treatment Program grant application in collaboration with the Department of Corrections; administer RSAT funds including distributing funds, monitoring sub-recipients compliance with all RSAT special conditions and provisions, and providing ongoing assistance to sub-recipient.	100%	100%	100%
Administer PSN funds including distributing funds, monitor sub-recipients compliance with all PSN special conditions and provisions, and providing ongoing assistance to sub-recipients.	100%	100%	100%
Prepare and submit the Edward Byrne Justice Assistance Grant Program grant application in collaboration with Guam's law enforcement entities and the Bureau's resource entities; coordinate JAG funds among state justice initiatives; administer JAG funds including establishing priorities, distributing funds, monitoring sub-recipients' compliance with all JAG special conditions and provisions, and providing ongoing assistance to sub-recipients.	100%	100%	100%
Prepare and submit the Paul Coverdell Forensic Sciences Improvement Grant Program grant application in collaboration with the Guam Police Department Forensic Science Division; ensure GPD meets the federal requirements before the application is submitted; administer Coverdell funds including distributing funds, monitor sub-recipients compliance with all Coverdell special conditions and provisions, and providing ongoing assistance to sub-recipient.	100%	100%	100%
Conduct program management, desk top and site monitoring activities for the following federal grant programs: Edward Byrne Justice Assistance Grant Program (JAG), ARRA Edward Byrne JAG, Residential Substance Abuse Treatment Program, Project Safe Neighborhoods, and Paul Coverdell Forensic Science Improvement Grant to ensure the subrecipients are aware of and in compliance with all programmatic and financial rules.	100%	100%	100%
Prepare and submit the Residential Substance Abuse Treatment Program Semi Annual Progress Report and Quarterly Performance Measurement Tool Report.	100%	100%	100%
Prepare and submit the Project Safe Neighborhood Semi Annual Progress Report.	100%	100%	100%
Prepare and submit the Edward Byrne Justice Assistance Grant Program Annual Programmatic Report and Quarterly Performance Measurement Tool Report.	100%	100%	100%
Prepare and submit the following ARRA JAG Reports: quarterly OMB Section 1512 Reports on federalreporting.gov; quarterly Performance metrics reports; annual reports on the GMS; BBMR Form 1 monthly reports; Governor Directive 2011-002 monthly reports	100%	0%	0%

Coordinate the development of a three year Marine Conservation Plan for Guam (2014 - 2016) with the Bureau's stakeholders to identify potential projects that will assist to promote sustainable fisheries by protecting the environment and supporting Guam's indigenous cultural fishing practices, subsistence fishing and commercial fishing; and to conduct periodic review and revision.	10%	100%	100%
Coordinate and review all federal grant application received by Guam State Clearinghouse; and to provide recommendation to the Guam State Clearinghouse.	100%	100%	100%
Coordinate with the Office of the Governor and appropriate GovGuam entities on Guam's participation in national, regional, and international organizations. Briefing papers are prepared, information to appropriate departments is disseminated and recommendations related to Guam's participation are given to the Governor for his consideration.	0%	100%	100%
Annually update Guam's Comprehensive Economic Development Strategy FY 2011-2015 for submission to US EDA. Coordinate Guam's EDA activities.	100%	100%	100%
Provide staff support to the Fiscal Policy Team in the coordination, development, and update of the Governor's Fiscal Stabilization and Sustainability Plan in collaboration with BBMR, Revenue and Taxation, Port Authority of Guam, GEDA, and DOA.	100%	100%	100%
Update the Bureau of Statistics and Plans Citizens Centric Report annually.	100%	100%	100%
Renew the Bureau's Systems for Award Management annually.	100%	100%	100%
Renew the Bureau's Grant.gov password semi annually.	100%	100%	100%

Government of Guam  
Fiscal Year 2015  
Budget Digest

[BBMR BD-1]

Function: Executive Direction  
Department/Agency: Bureau of Statistics and Plans  
Program: SUMMARY

AS400 Account Code	Appropriation Classification	A	B	C	D	E	F	G	H	I	J	K	L
		GENERAL FUND			SPECIAL FUND 1/			FEDERAL MATCH			GRAND TOTALS (ALL FUNDS)		
		FY 2013 Expenditures & Encumbrances	FY 2014 Authorized Level	FY2015 Governor's Request	FY 2013 Expenditures & Encumbrances	FY 2014 Authorized Level	FY2015 Governor's Request	FY 2013 Expenditures & Encumbrances	FY 2014 Authorized Level	FY2015 Governor's Request	FY 2013 Expenditures & Encumbrances	FY 2014 Authorized Level	FY2015 Governor's Request
	<b>PERSONNEL SERVICES</b>												
111	Regular Salaries/Increments/Special Pay:	827,652	797,181	844,994	0	0	0	0	0	0	827,652	797,181	844,994
112	Overtime:	0	0	0	0	0	0	0	0	0	0	0	0
113	Benefits:	311,318	306,623	328,819	0	0	0	0	0	0	311,318	306,623	328,819
114	Insurance Benefits (Medical / Dental / Life):	0	0	0	0	0	0	0	0	0	0	0	0
	<b>TOTAL PERSONNEL SERVICES</b>	<b>1,138,970</b>	<b>\$1,103,804</b>	<b>\$1,173,813</b>	<b>\$0</b>	<b>\$0</b>	<b>\$0</b>	<b>\$0</b>	<b>\$0</b>	<b>\$0</b>	<b>\$1,138,970</b>	<b>\$1,103,804</b>	<b>\$1,173,813</b>
	<b>OPERATIONS</b>												
220	TRAVEL- Off-Island/Local Mileage Reimburs:	0	0	0	0	0	0	0	0	0	0	0	0
230	CONTRACTUAL SERVICES:	0	0	0	0	0	0	0	0	0	0	0	0
233	OFFICE SPACE RENTAL:	21,000	21,000	21,000	0	0	0	0	0	0	21,000	21,000	21,000
240	SUPPLIES & MATERIALS:	0	4,391	6,391	0	0	0	0	0	0	0	4,391	6,391
250	EQUIPMENT:	0	0	0	0	0	0	0	0	0	0	0	0
270	WORKERS COMPENSATION:	0	0	0	0	0	0	0	0	0	0	0	0
271	DRUG TESTING:	0	0	0	0	0	0	0	0	0	0	0	0
280	SUB-RECIPIENT/SUBGRANT:	0	0	0	0	0	0	0	0	0	0	0	0
290	MISCELLANEOUS:	0	0	0	0	0	0	0	0	0	0	0	0
	<b>TOTAL OPERATIONS</b>	<b>21,000</b>	<b>\$25,391</b>	<b>\$27,391</b>	<b>\$0</b>	<b>\$0</b>	<b>\$0</b>	<b>\$0</b>	<b>\$0</b>	<b>\$0</b>	<b>\$21,000</b>	<b>\$25,391</b>	<b>\$27,391</b>
	<b>UTILITIES</b>												
361	Power:	0	0	0	0	0	0	0	0	0	0	0	0
362	Water/ Sewer:	0	0	0	0	0	0	0	0	0	0	0	0
363	Telephone/ Toll:	3,280	5,048	3,418	0	0	0	0	0	0	3,280	5,048	3,418
	<b>TOTAL UTILITIES</b>	<b>3,280</b>	<b>\$5,048</b>	<b>\$3,418</b>	<b>\$0</b>	<b>\$0</b>	<b>\$0</b>	<b>\$0</b>	<b>\$0</b>	<b>\$0</b>	<b>\$3,280</b>	<b>\$5,048</b>	<b>\$3,418</b>
450	CAPITAL OUTLAY	0	0	0	0	0	0	0	0	0	0	0	0
	<b>TOTAL APPROPRIATIONS</b>	<b>1,163,250</b>	<b>\$1,134,243</b>	<b>\$1,204,622</b>	<b>\$0</b>	<b>\$0</b>	<b>\$0</b>	<b>\$0</b>	<b>\$0</b>	<b>\$0</b>	<b>\$1,163,250</b>	<b>\$1,134,243</b>	<b>\$1,204,622</b>
	1/ Specify Fund Source												
	<b>FULL TIME EQUIVALENCIES (FTEs)</b>												
	UNCLASSIFIED:	1	1	1	0	0	0	0	0	0	1	1	1
	CLASSIFIED:	17	16	18	0	0	0	0	0	0	17	16	18
	<b>TOTAL FTEs</b>	<b>18.0</b>	<b>17.0</b>	<b>19.0</b>	<b>0.0</b>	<b>0.0</b>	<b>0.0</b>	<b>0.0</b>	<b>0.0</b>	<b>0.0</b>	<b>18.0</b>	<b>17.0</b>	<b>19.0</b>

Government of Guam  
Fiscal Year 2015  
Budget Digest

[BBMR BD-1]

Function: Executive Direction  
Department/Agency: Bureau of Statistics and Plans  
Program: Administration  
5100A140900GA001 (requested by OFB)

AS400 Account Code	Appropriation Classification	A	B	C	D	E	F	G	H	I	J	K	L
		GENERAL FUND			SPECIAL FUND 1/			FEDERAL MATCH			GRAND TOTALS (ALL FUNDS)		
		FY 2013 Expenditures & Encumbrances	FY 2014 Authorized Level	FY2015 Governor's Request	FY 2013 Expenditures & Encumbrances	FY 2014 Authorized Level	FY2015 Governor's Request	FY 2013 Expenditures & Encumbrances	FY 2014 Authorized Level	FY2015 Governor's Request	FY 2013 Expenditures & Encumbrances	FY 2014 Authorized Level	FY2015 Governor's Request
	<b>PERSONNEL SERVICES</b>												
111	Regular Salaries/Increments/Special Pay:	213,033	197,964	212,691	0	0	0	0	0	0	213,033	197,964	212,691
112	Overtime:	0	0	0	0	0	0	0	0	0	0	0	0
113	Benefits:	76,393	70,694	80,534	0	0	0	0	0	0	76,393	70,694	80,534
114	Insurance Benefits (Medical / Dental / Life):	0	0	0	0	0	0	0	0	0	0	0	0
	<b>TOTAL PERSONNEL SERVICES</b>	<b>289,426</b>	<b>\$268,658</b>	<b>\$293,225</b>	<b>\$0</b>	<b>\$0</b>	<b>\$0</b>	<b>\$0</b>	<b>\$0</b>	<b>\$0</b>	<b>\$289,426</b>	<b>\$268,658</b>	<b>\$293,225</b>
	<b>OPERATIONS</b>												
220	TRAVEL- Off-Island/Local Mileage Reimburs:	0	0	0	0	0	0	0	0	0	0	0	0
230	CONTRACTUAL SERVICES:	0	0	0	0	0	0	0	0	0	0	0	0
233	OFFICE SPACE RENTAL:	21,000	21,000	21,000	0	0	0	0	0	0	21,000	21,000	21,000
240	SUPPLIES & MATERIALS:	0	4,391	6,391	0	0	0	0	0	0	0	4,391	6,391
250	EQUIPMENT:	0	0	0	0	0	0	0	0	0	0	0	0
270	WORKERS COMPENSATION:	0	0	0	0	0	0	0	0	0	0	0	0
271	DRUG TESTING:	0	0	0	0	0	0	0	0	0	0	0	0
280	SUB-RECIPIENT/SUBGRANT:	0	0	0	0	0	0	0	0	0	0	0	0
290	MISCELLANEOUS:	0	0	0	0	0	0	0	0	0	0	0	0
	<b>TOTAL OPERATIONS</b>	<b>21,000</b>	<b>\$25,391</b>	<b>\$27,391</b>	<b>\$0</b>	<b>\$0</b>	<b>\$0</b>	<b>\$0</b>	<b>\$0</b>	<b>\$0</b>	<b>\$21,000</b>	<b>\$25,391</b>	<b>\$27,391</b>
	<b>UTILITIES</b>												
361	Power:	0	0	0	0	0	0	0	0	0	0	0	0
362	Water/ Sewer:	0	0	0	0	0	0	0	0	0	0	0	0
363	Telephone/ Toll:	3,280	5,048	3,418	0	0	0	0	0	0	3,280	5,048	3,418
	<b>TOTAL UTILITIES</b>	<b>3,280</b>	<b>\$5,048</b>	<b>\$3,418</b>	<b>\$0</b>	<b>\$0</b>	<b>\$0</b>	<b>\$0</b>	<b>\$0</b>	<b>\$0</b>	<b>\$3,280</b>	<b>\$5,048</b>	<b>\$3,418</b>
450	<b>CAPITAL OUTLAY</b>	<b>0</b>	<b>0</b>	<b>0</b>	<b>0</b>	<b>0</b>	<b>0</b>	<b>0</b>	<b>0</b>	<b>0</b>	<b>0</b>	<b>0</b>	<b>0</b>
	<b>TOTAL APPROPRIATIONS</b>	<b>313,705</b>	<b>\$299,097</b>	<b>\$324,034</b>	<b>\$0</b>	<b>\$0</b>	<b>\$0</b>	<b>\$0</b>	<b>\$0</b>	<b>\$0</b>	<b>\$313,705</b>	<b>\$299,097</b>	<b>\$324,034</b>
	1/ Specify Fund Source												
	<b>FULL TIME EQUIVALENCIES (FTEs)</b>												
	UNCLASSIFIED:	1	1	1	0	0	0	0	0	0	1	1	1
	CLASSIFIED:	3	3	3	0	0	0	0	0	0	3	3	3
	<b>TOTAL FTEs</b>	<b>4.0</b>	<b>4.0</b>	<b>4.0</b>	<b>0.0</b>	<b>0.0</b>	<b>0.0</b>	<b>0.0</b>	<b>0.0</b>	<b>0.0</b>	<b>4.0</b>	<b>4.0</b>	<b>4.0</b>

Government of Guam  
Fiscal Year 2015  
Budget Digest

[BBMR BD-1]Revised

Function: Executive Direction  
Department/Agency: Bureau of Statistics and Plans  
Program: Planning Information Program  
5100A140910SE004 (requested by OFB)

		A	B	C	D	E	F	G	H	I	J	K	L
AS400 Account Code	Appropriation Classification	GENERAL FUND			SPECIAL FUND 1/			FEDERAL MATCH			GRAND TOTALS (ALL FUNDS)		
		FY 2013 Expenditures & Encumbrances	FY 2014 Authorized Level	FY2015 Governor's Request	FY 2013 Expenditures & Encumbrances	FY 2014 Authorized Level	FY2015 Governor's Request	FY 2013 Expenditures & Encumbrances	FY 2014 Authorized Level	FY2015 Governor's Request	FY 2013 Expenditures & Encumbrances	FY 2014 Authorized Level	FY2015 Governor's Request
<b>PERSONNEL SERVICES</b>													
111	Regular Salaries/Increments/Special Pay:	222,924	223,985	180,154	0	0	0	0	0	0	222,924	223,985	180,154
112	Overtime:	0	0	0	0	0	0	0	0	0	0	0	0
113	Benefits:	81,505	85,389	68,110	0	0	0	0	0	0	81,505	85,389	68,110
114	Insurance Benefits (Medical / Dental / Life):	0	0	0	0	0	0	0	0	0	0	0	0
<b>TOTAL PERSONNEL SERVICES</b>		<b>304,429</b>	<b>\$309,374</b>	<b>\$248,264</b>	<b>\$0</b>	<b>\$0</b>	<b>\$0</b>	<b>\$0</b>	<b>\$0</b>	<b>\$0</b>	<b>\$304,429</b>	<b>\$309,374</b>	<b>\$248,264</b>
<b>OPERATIONS</b>													
220	TRAVEL- Off-Island/Local Mileage Reimburs:	0	0	0	0	0	0	0	0	0	0	0	0
230	CONTRACTUAL SERVICES:	0	0	0	0	0	0	0	0	0	0	0	0
233	OFFICE SPACE RENTAL:	0	0	0	0	0	0	0	0	0	0	0	0
240	SUPPLIES & MATERIALS:	0	0	0	0	0	0	0	0	0	0	0	0
250	EQUIPMENT:	0	0	0	0	0	0	0	0	0	0	0	0
270	WORKERS COMPENSATION:	0	0	0	0	0	0	0	0	0	0	0	0
271	DRUG TESTING:	0	0	0	0	0	0	0	0	0	0	0	0
280	SUB-RECIPIENT/SUBGRANT:	0	0	0	0	0	0	0	0	0	0	0	0
290	MISCELLANEOUS:	0	0	0	0	0	0	0	0	0	0	0	0
<b>TOTAL OPERATIONS</b>		<b>0</b>	<b>\$0</b>	<b>\$0</b>	<b>\$0</b>	<b>\$0</b>	<b>\$0</b>	<b>\$0</b>	<b>\$0</b>	<b>\$0</b>	<b>\$0</b>	<b>\$0</b>	<b>\$0</b>
<b>UTILITIES</b>													
361	Power:	0	0	0	0	0	0	0	0	0	0	0	0
362	Water/ Sewer:	0	0	0	0	0	0	0	0	0	0	0	0
363	Telephone/ Toll:	0	0	0	0	0	0	0	0	0	0	0	0
<b>TOTAL UTILITIES</b>		<b>0</b>	<b>\$0</b>	<b>\$0</b>	<b>\$0</b>	<b>\$0</b>	<b>\$0</b>	<b>\$0</b>	<b>\$0</b>	<b>\$0</b>	<b>\$0</b>	<b>\$0</b>	<b>\$0</b>
450	CAPITAL OUTLAY	0	0	0	0	0	0	0	0	0	0	0	0
<b>TOTAL APPROPRIATIONS</b>		<b>304,429</b>	<b>\$309,374</b>	<b>\$248,264</b>	<b>\$0</b>	<b>\$0</b>	<b>\$0</b>	<b>\$0</b>	<b>\$0</b>	<b>\$0</b>	<b>\$304,429</b>	<b>\$309,374</b>	<b>\$248,264</b>
1/ Specify Fund Source													
<b>FULL TIME EQUIVALENCIES (FTEs)</b>													
UNCLASSIFIED:		0	0	0	0	0	0	0	0	0	0	0	0
CLASSIFIED:		4	3	4	0	0	0	0	0	0	4	3	4
<b>TOTAL FTEs</b>		<b>4.0</b>	<b>3.0</b>	<b>4.0</b>	<b>0.0</b>	<b>0.0</b>	<b>0.0</b>	<b>0.0</b>	<b>0.0</b>	<b>0.0</b>	<b>4.0</b>	<b>3.0</b>	<b>4.0</b>



Government of Guam  
Fiscal Year 2015  
Budget Digest

[BBMR BD-1]

Function: Executive Direction  
Department/Agency: Bureau of Statistics and Plans  
Program: Business and Economic Statistics Program  
5100A140932EI001 (requested by OFB)

AS400 Account Code	Appropriation Classification	A	B	C	D	E	F	G	H	I	J	K	L
		GENERAL FUND			SPECIAL FUND 1/			FEDERAL MATCH			GRAND TOTALS (ALL FUNDS)		
		FY 2013 Expenditures & Encumbrances	FY 2014 Authorized Level	FY2015 Governor's Request	FY 2013 Expenditures & Encumbrances	FY 2014 Authorized Level	FY2015 Governor's Request	FY 2013 Expenditures & Encumbrances	FY 2014 Authorized Level	FY2015 Governor's Request	FY 2013 Expenditures & Encumbrances	FY 2014 Authorized Level	FY2015 Governor's Request
	<b>PERSONNEL SERVICES</b>												
111	Regular Salaries/Increments/Special Pay:	284,798	258,362	301,162	0	0	0	0	0	0	284,798	258,362	301,162
112	Overtime:	0	0	0	0	0	0	0	0	0	0	0	0
113	Benefits:	116,255	104,546	124,462	0	0	0	0	0	0	116,255	104,546	124,462
114	Insurance Benefits (Medical / Dental / Life):	0	0	0	0	0	0	0	0	0	0	0	0
	<b>TOTAL PERSONNEL SERVICES</b>	<b>401,053</b>	<b>\$362,908</b>	<b>\$425,624</b>	<b>\$0</b>	<b>\$0</b>	<b>\$0</b>	<b>\$0</b>	<b>\$0</b>	<b>\$0</b>	<b>\$401,053</b>	<b>\$362,908</b>	<b>\$425,624</b>
	<b>OPERATIONS</b>												
220	TRAVEL- Off-Island/Local Mileage Reimburs:	0	0	0	0	0	0	0	0	0	0	0	0
230	CONTRACTUAL SERVICES:	0	0	0	0	0	0	0	0	0	0	0	0
233	OFFICE SPACE RENTAL:	0	0	0	0	0	0	0	0	0	0	0	0
240	SUPPLIES & MATERIALS:	0	0	0	0	0	0	0	0	0	0	0	0
250	EQUIPMENT:	0	0	0	0	0	0	0	0	0	0	0	0
270	WORKERS COMPENSATION:	0	0	0	0	0	0	0	0	0	0	0	0
271	DRUG TESTING:	0	0	0	0	0	0	0	0	0	0	0	0
280	SUB-RECIPIENT/SUBGRANT:	0	0	0	0	0	0	0	0	0	0	0	0
290	MISCELLANEOUS:	0	0	0	0	0	0	0	0	0	0	0	0
	<b>TOTAL OPERATIONS</b>	<b>0</b>	<b>\$0</b>	<b>\$0</b>	<b>\$0</b>	<b>\$0</b>	<b>\$0</b>	<b>\$0</b>	<b>\$0</b>	<b>\$0</b>	<b>\$0</b>	<b>\$0</b>	<b>\$0</b>
	<b>UTILITIES</b>												
361	Power:	0	0	0	0	0	0	0	0	0	0	0	0
362	Water/ Sewer:	0	0	0	0	0	0	0	0	0	0	0	0
363	Telephone/ Toll:	0	0	0	0	0	0	0	0	0	0	0	0
	<b>TOTAL UTILITIES</b>	<b>0</b>	<b>\$0</b>	<b>\$0</b>	<b>\$0</b>	<b>\$0</b>	<b>\$0</b>	<b>\$0</b>	<b>\$0</b>	<b>\$0</b>	<b>\$0</b>	<b>\$0</b>	<b>\$0</b>
450	<b>CAPITAL OUTLAY</b>	<b>0</b>	<b>0</b>	<b>0</b>	<b>0</b>	<b>0</b>	<b>0</b>	<b>0</b>	<b>0</b>	<b>0</b>	<b>0</b>	<b>0</b>	<b>0</b>
	<b>TOTAL APPROPRIATIONS</b>	<b>401,053</b>	<b>\$362,908</b>	<b>\$425,624</b>	<b>\$0</b>	<b>\$0</b>	<b>\$0</b>	<b>\$0</b>	<b>\$0</b>	<b>\$0</b>	<b>\$401,053</b>	<b>\$362,908</b>	<b>\$425,624</b>
	1/ Specify Fund Source												
	<b>FULL TIME EQUIVALENCIES (FTEs)</b>												
	UNCLASSIFIED:	0	0	0	0	0	0	0	0	0	0	0	0
	CLASSIFIED:	8	8	8	0	0	0	0	0	0	8	8	8
	<b>TOTAL FTEs</b>	<b>8.0</b>	<b>8.0</b>	<b>8.0</b>	<b>0.0</b>	<b>0.0</b>	<b>0.0</b>	<b>0.0</b>	<b>0.0</b>	<b>0.0</b>	<b>8.0</b>	<b>8.0</b>	<b>8.0</b>

Government of Guam  
Fiscal Year 2015  
Budget Digest

[BBMR BD-1]

Function: Executive Direction  
Department/Agency: Bureau of Statistics and Plans  
Program: Socio-Economic Planning Program  
5100A140920SE005 (requested by OFB)

AS400 Account Code	Appropriation Classification	A	B	C	D	E	F	G	H	I	J	K	L
		GENERAL FUND			SPECIAL FUND 1/			FEDERAL MATCH			GRAND TOTALS (ALL FUNDS)		
		FY 2013 Expenditures & Encumbrances	FY 2014 Authorized Level	FY2015 Governor's Request	FY 2013 Expenditures & Encumbrances	FY 2014 Authorized Level	FY2015 Governor's Request	FY 2013 Expenditures & Encumbrances	FY 2014 Authorized Level	FY2015 Governor's Request	FY 2013 Expenditures & Encumbrances	FY 2014 Authorized Level	FY2015 Governor's Request
	<b>PERSONNEL SERVICES</b>												
111	Regular Salaries/Increments/Special Pay:	106,897	116,870	150,987	0	0	0	0	0	0	106,897	116,870	150,987
112	Overtime:	0	0	0	0	0	0	0	0	0	0	0	0
113	Benefits:	37,166	45,994	55,713	0	0	0	0	0	0	37,166	45,994	55,713
114	Insurance Benefits (Medical / Dental / Life):	0	0	0	0	0	0	0	0	0	0	0	0
	<b>TOTAL PERSONNEL SERVICES</b>	<b>144,062</b>	<b>\$162,864</b>	<b>\$206,700</b>	<b>\$0</b>	<b>\$0</b>	<b>\$0</b>	<b>\$0</b>	<b>\$0</b>	<b>\$0</b>	<b>\$144,062</b>	<b>\$162,864</b>	<b>\$206,700</b>
	<b>OPERATIONS</b>												
220	TRAVEL- Off-Island/Local Mileage Reimburs:	0	0	0	0	0	0	0	0	0	0	0	0
230	CONTRACTUAL SERVICES:	0	0	0	0	0	0	0	0	0	0	0	0
233	OFFICE SPACE RENTAL:	0	0	0	0	0	0	0	0	0	0	0	0
240	SUPPLIES & MATERIALS:	0	0	0	0	0	0	0	0	0	0	0	0
250	EQUIPMENT:	0	0	0	0	0	0	0	0	0	0	0	0
270	WORKERS COMPENSATION:	0	0	0	0	0	0	0	0	0	0	0	0
271	DRUG TESTING:	0	0	0	0	0	0	0	0	0	0	0	0
280	SUB-RECIPIENT/SUBGRANT:	0	0	0	0	0	0	0	0	0	0	0	0
290	MISCELLANEOUS:	0	0	0	0	0	0	0	0	0	0	0	0
	<b>TOTAL OPERATIONS</b>	<b>0</b>	<b>\$0</b>	<b>\$0</b>	<b>\$0</b>	<b>\$0</b>	<b>\$0</b>	<b>\$0</b>	<b>\$0</b>	<b>\$0</b>	<b>\$0</b>	<b>\$0</b>	<b>\$0</b>
	<b>UTILITIES</b>												
361	Power:	0	0	0	0	0	0	0	0	0	0	0	0
362	Water/ Sewer:	0	0	0	0	0	0	0	0	0	0	0	0
363	Telephone/ Toll:	0	0	0	0	0	0	0	0	0	0	0	0
	<b>TOTAL UTILITIES</b>	<b>0</b>	<b>\$0</b>	<b>\$0</b>	<b>\$0</b>	<b>\$0</b>	<b>\$0</b>	<b>\$0</b>	<b>\$0</b>	<b>\$0</b>	<b>\$0</b>	<b>\$0</b>	<b>\$0</b>
450	<b>CAPITAL OUTLAY</b>	<b>0</b>	<b>0</b>	<b>0</b>	<b>0</b>	<b>0</b>	<b>0</b>	<b>0</b>	<b>0</b>	<b>0</b>	<b>0</b>	<b>0</b>	<b>0</b>
	<b>TOTAL APPROPRIATIONS</b>	<b>144,062</b>	<b>\$162,864</b>	<b>\$206,700</b>	<b>\$0</b>	<b>\$0</b>	<b>\$0</b>	<b>\$0</b>	<b>\$0</b>	<b>\$0</b>	<b>\$144,062</b>	<b>\$162,864</b>	<b>\$206,700</b>
	1/ Specify Fund Source												
	<b>FULL TIME EQUIVALENCIES (FTEs)</b>												
	UNCLASSIFIED:	0	0	0	0	0	0	0	0	0	0	0	0
	CLASSIFIED:	2	2	3	0	0	0	0	0	0	2	2	3
	<b>TOTAL FTEs</b>	<b>2.0</b>	<b>2.0</b>	<b>3.0</b>	<b>0.0</b>	<b>0.0</b>	<b>0.0</b>	<b>0.0</b>	<b>0.0</b>	<b>0.0</b>	<b>2.0</b>	<b>2.0</b>	<b>3.0</b>

Schedule A - Off-Island Travel

Department/Agency: Bureau of Statistics and Plans

Division: ALL LOCAL DIVISIONS

Program: ALL PROGRAMS

<b>Purpose / Justification for Travel</b>				
Travel Date: _____			No. of Travelers: _____ 1/	
Position Title of Traveler(s)	Air Fare	Per diem 2/	Registration	Total Cost
	\$ -	\$ -	\$ -	\$ -
	\$ -	\$ -	\$ -	\$ -

<b>Purpose / Justification for Travel</b>				
Travel Date: _____			No. of Travelers: _____ 1/	
Position Title of Traveler(s)	Air Fare	Per diem 2/	Registration	Total Cost
	\$ -	\$ -	\$ -	\$ -
	\$ -	\$ -	\$ -	\$ -

<b>Purpose / Justification for Travel</b>				
Travel Date: _____			No. of Travelers: _____ 1/	
Position Title of Traveler(s)	Air Fare	Per diem 2/	Registration	Total Cost
	\$ -	\$ -	\$ -	\$ -
	\$ -	\$ -	\$ -	\$ -

1/ Provide justification for multiple travelers attending the same conference / training / etc.

2/ Rates must be consistent with Title 5 GCA, Div.2, Ch.23, §23104 and federal Joint Travel Regulations

## Schedule B- Contractual

Item	Quantity	Unit Price	Total Price	Funded in FY 2013?	
				Yes	No
			\$ -		
			\$ -		
			\$ -		
			\$ -		
			\$ -		
			\$ -		
<b>Total Contractual</b>			\$ -		

## Schedule C - Supplies &amp; Materials

Item	Quantity	Unit Price	Total Price	Funded in FY 2013?	
				Yes	No
Miscellaneous Office Supplies			\$ 6,391.00	X	
			\$ -		
			\$ -		
			\$ -		
			\$ -		
			\$ -		
<b>Total Supplies &amp; Materials</b>			\$ 6,391.00		

## Schedule D - Equipment

Item	Quantity	Unit Price	Total Price	Funded in FY 2013?	
				Yes	No
			\$ -		
			\$ -		
			\$ -		
			\$ -		
			\$ -		
			\$ -		
<b>Total Equipment</b>			\$ -		

## Schedule E - Miscellaneous

Item	Quantity	Unit Price	Total Price	Funded in FY 2013?	
				Yes	No
			\$ -		
			\$ -		
			\$ -		
			\$ -		
			\$ -		
<b>Total Miscellaneous</b>			\$ -		

## Schedule F - Capital Outlay

Item	Quantity	Unit Price	Total Price	Funded in FY 2013?	
				Yes	No
			\$ -		
			\$ -		
			\$ -		
			\$ -		
			\$ -		
			\$ -		
<b>Total Capital Outlay</b>			\$ -		

**Government of Guam  
Fiscal Year 2015 Budget  
Agency Staffing Pattern  
PROPOSED  
(Competitive Wage Plan of 2014)**

FUNCTIONAL AREA: EXECUTIVE DIRECTION

DEPARTMENT/AGENCY: BUREAU OF STATISTICS AND PLANS

PROGRAM: Summary

FUND: Summary (General Fund / 100% Federal)

Input by Department														
(A)	(B)	(C)	(D)	(E)	(F)	(G)	(H)	(I)	(J)	(K)	(L)	(M)	(N)	(O)
Division	Total Salary	Total Overtime	Total Special*	Total Increment Amt.	(B+C+D+E) Subtotal	Benefits					Medical (Premium)	Dental (Premium)	Total Benefits (G thru M)	(F + N) TOTAL
						Retirement (F*29.67%)	Retire (DDI) (\$19.02*26PP)	Social Security (6.2% * F)	Medicare (1.45% * F)	Life (1/)				
ADMINISTRATION	\$211,910	\$0	\$0	\$781	\$212,691	\$63,105	\$495	\$0	\$2,493	\$612	\$13,020	\$808	80,534	\$293,225
BUS. & ECONOMIC STATISTICS	298,451	0	0	2,711	301,162	89,355	990	0	3,737	1,224	27,420	1,736	124,462	425,624
PLANNING INFORMATION PROGRAM	177,852	0	0	2,302	180,154	53,452	0	0	1,836	459	11,271	1,092	68,110	248,264
SOCIO-ECONOMIC PLANNING	149,764	0	0	1,223	150,987	44,798	495	0	2,189	459	7,084	688	55,713	206,700
GENERAL FUND	837,977	0	0	7,017	844,994	250,710	1,980	0	10,256	2,754	58,795	4,324	328,819	1,173,813
GIS	44,682	0	0	1,013	45,695	13,558	495	0	663	153	6,510	404	21,782	67,477
GCMP	326,886	0	0	1,779	328,665	97,515	0	0	4,607	918	16,174	1,151	120,365	449,030
BYRNE	107,899	0	0	186	108,085	32,069	0	0	1,567	459	16,960	1,048	52,103	160,188
WESPACFIN	28,964	0	0	8	28,972	8,596	495	0	420	153	6,510	404	16,578	45,550
GDDC	143,288	0	0	1,797	145,085	43,047	990	0	2,104	459	12,269	1,032	59,900	204,985
CRI	119,687	0	0	0	119,687	35,511	1,485	0	1,735	459	15,603	1,032	55,826	175,513
100% FEDERAL	771,406	0	0	4,783	776,189	230,295	3,465	0	11,096	2,601	74,026	5,071	326,555	1,102,744
GRAND TOTAL	\$1,609,383	\$0	\$0	\$11,800	\$1,621,183	\$481,005	\$5,445	\$0	\$21,352	\$5,355	\$132,821	\$9,395	\$655,373	\$2,276,556

\* Night Differential / Hazardous / Worker's Compensation / etc.

1/: FY 2014 (current) GovGuam contribution for Life Insurance

FUNCTIONAL AREA: EXECUTIVE DIRECTION

AGENCY: BUREAU OF STATISTICS AND PLANS

PROGRAM: ADMINISTRATION

FUND: GENERAL FUND - 5100A1900GA001 (requested by OFB)

Ratio: 100%

Government of Guam  
Fiscal Year 2015 Budget  
Agency Staffing Pattern  
**PROPOSED**  
(Competitive Wage Plan of 2014)

[BBMR SP-1]

Input by Department										Input by Department											
No.	(A) Position Number	(B) Position Title	(C) Name of Incumbent	(D) Grade/Step	(E) Salary	(F) Overtime	(G) Special*	(H) Increment		(J) (E+F+G+I) Subtotal	(K) Retirement (J*29.67)	(L) Retire (DDI) (\$19.02*26PP)	(M) Social Security (6.2% * J)	(N) Benefits			(O) Life 153	(P) Medical (Premium)	(Q) Dental (Premium)	(R) Total Benefits (K thru Q)	(S) (J + R) TOTAL
								Date	(E*Amount)					Medicare (1.45%*J)							
1	ADM001	Director	Lorilee T. Crisostomo	E-1-1	\$ 76,188	\$ -	\$ -		\$ -	\$ 76,188	\$ 22,605	\$ -	\$ 0	\$ 1,105	\$ 153	\$ 6,510	\$ 404	\$ 30,777	\$ 106,965		
2	ADM002	Chief Planner	VACANT	P-1	\$ -	\$ -	\$ -		\$ -	\$ -	\$ -	\$ -	\$ -	\$ -	\$ -	\$ -	\$ -	\$ -	\$ -		
3	ADM004	WP Secretary II	Therese C. Aguon	H-13	\$ 39,983	\$ -	\$ -	2/27/2015	\$ 752	\$ 40,735	\$ 12,086	\$ -	\$ -	\$ -	\$ 153	\$ 6,510	\$ 404	\$ 19,153	\$ 59,888		
4	ADM006	Administrative Services Officer	Terry L. Cuabo	N-4	\$ 50,328	\$ -	\$ -	9/26/2015	\$ 29	\$ 50,357	\$ 14,941	\$ 495	\$ -	\$ 730	\$ 153	\$ -	\$ -	\$ 16,319	\$ 66,676		
5	ADM008	Administrative Assistant	Marylou S. Gogo	J-12	\$ 45,411	\$ -	\$ -	2/15/2016	\$ -	\$ 45,411	\$ 13,473	\$ -	\$ -	\$ 658	\$ 153	\$ -	\$ -	\$ 14,285	\$ 59,696		
6	ADM003	Private Secretary	VACANT	I-08	\$ -	\$ -	\$ -		\$ -	\$ -	\$ -	\$ -	\$ -	\$ -	\$ -	\$ -	\$ -	\$ -	\$ -		
Grand Total:				---	\$ 211,910	\$ -	\$ -	---	\$ 781	\$ 212,691	\$ 63,105	\$ 495	\$ -	\$ 2,493	\$ 612	\$ 13,020	\$ 808	\$ 80,534	\$ 293,225		

Night Differential/Hazardous/Worker's Compensation/etc.

FUNCTIONAL AREA: EXECUTIVE DIRECTION

AGENCY: BUREAU OF STATISTICS AND PLANS

PROGRAM: BUSINESS & ECONOMIC STATISTICS PROGRAM

FUND: GENERAL FUND - 5100A140932E1001 (requested by OFB)

Ratio: 100%

**Government of Guam  
Fiscal Year 2015 Budget  
Agency Staffing Pattern  
PROPOSED  
(Competitive Wage Plan of 2014)**

[BBMR SP-1]

Input by Department										Input by Department										
No.	(A)	(B)	(C)	(D)	(E)	(F)	(G)	(H)		(J)	(K)	(L)	(M)	(N)	(O)	(P)		(Q)	(R)	(S)
	Position Number	Position Title	Name of Incumbent	Grade/Step	Salary	Overtime	Special*	Increment		(F+G+H+J) Subtotal	Retirement (J * 29.67%)	Retire (DDI) (\$19.02*26PP*E)	Social Security (6.2% * J)	Medicare (1.45%*J)	Life 153 * E	Medical (Premium * E)	Dental (Premium * E)	Total Benefits (K thru Q)	(J + R) TOTAL	
1	BES-001	Statistician II	Edwin S. Verzosa	K-7	\$ 42,389	\$ -	\$ -	12/17/2014	\$ 1,066	\$ 43,455	\$ 12,893	\$ -	\$ -	\$ -	\$ 153	\$ 2,583	\$ 224	\$ 15,853	\$ 59,308	
2	BES-002	Data Control Clerk II	Heather R. Perez	F-2	\$ 24,049	\$ -	\$ -	8/3/2015	\$ 151	\$ 24,200	\$ 7,180	\$ 495	\$ -	\$ 351	\$ 153	\$ 3,940	\$ 240	\$ 12,359	\$ 36,559	
3	BES-003	Statistical Technician II	VACANT	F-1	\$ -	\$ -	\$ -		\$ -	\$ -	\$ -	\$ -	\$ -	\$ -	\$ -	\$ -	\$ -	\$ -	\$ -	
4	BES-004	Statistical Technician II	Bertha M. Toves	F-13	\$ 34,934	\$ -	\$ -	4/12/2016	\$ -	\$ 34,934	\$ 10,365	\$ -	\$ -	\$ 507	\$ 153	\$ -	\$ -	\$ 11,024	\$ 45,958	
5	BES-005	Statistician I	Antonette Pitter	I-10	\$ 39,255	\$ -	\$ -	6/17/2016	\$ -	\$ 39,255	\$ 11,647	\$ 495	\$ -	\$ 569	\$ 153	\$ 3,176	\$ 404	\$ 16,444	\$ 55,699	
6	BES-006	Statistician II	Selina C. Tenorio	K-5	\$ 39,350	\$ -	\$ -	2/4/2015	\$ 987	\$ 40,337	\$ 11,968	\$ -	\$ -	\$ 585	\$ 153	\$ 3,940	\$ 240	\$ 16,886	\$ 57,223	
7	BES-007	Statistical Technician I	Mernalee A. Sablan	E-2	\$ 21,895	\$ -	\$ -	4/26/2015	\$ 329	\$ 22,224	\$ 6,594	\$ -	\$ -	\$ 322	\$ 153	\$ 6,510	\$ 404	\$ 13,983	\$ 36,207	
8	BES-010	Statistical Technician I	VACANT	E-1	\$ -	\$ -	\$ -		\$ -	\$ -	\$ -	\$ -	\$ -	\$ -	\$ -	\$ -	\$ -	\$ -	\$ -	
9	BES-011	Planning Technician I	VACANT	H-11	\$ -	\$ -	\$ -		\$ -	\$ -	\$ -	\$ -	\$ -	\$ -	\$ -	\$ -	\$ -	\$ -	\$ -	
10	BES-012	Statistical Technician I	Marietta Balbastro	E-10	\$ 28,959	\$ -	\$ -	11/12/2015	\$ -	\$ 28,959	\$ 8,592	\$ -	\$ -	\$ 420	\$ 153	\$ 4,688	\$ -	\$ 13,853	\$ 42,812	
11	BES-013	Chief Economist	Albert M. Perez	Q-4	\$ 67,620	\$ -	\$ -	9/5/2015	\$ 178	\$ 67,798	\$ 20,116	\$ -	\$ -	\$ 983	\$ 153	\$ 2,583	\$ 224	\$ 24,059	\$ 91,857	
Grand Total:				---	\$298,451	\$0	\$0	---	\$2,711	\$301,162	\$89,355	\$990	\$0	\$3,737	\$1,224	\$27,420	\$1,736	\$124,462	\$425,624	

\* Night Differential/Hazardous/Worker's Compensation/etc.

FUNCTIONAL AREA: EXECUTIVE DIRECTION

AGENCY: BUREAU OF STATISTICS AND PLANS

PROGRAM: PLANNING INFORMATION PROGRAM

FUND: GENERAL FUND - 5100A140910SE004 (requested by OFB)

Ratio: 100%

Government of Guam  
 Fiscal Year 2015 Budget  
 Agency Staffing Pattern  
**PROPOSED**  
 (Competitive Wage Plan of 2014)

[BBMR SP-1]

Input by Department										Input by Department									
No.	(A)	(B)	(C)	(D)	(E)	(F)	(G)	(H)		(J)	(K)	(L)	(M)	(N)	(O)	(P)	(Q)	(R)	(S)
	Position Number	Position Title	Name of Incumbent	Grade/Step	Salary	Overtime	Special*	Increment		(F+G+H+J) Subtotal	Retirement (J * 29.67%)	Retire (DDI) (\$19.02*26PP*E)	Social Security (6.2% * J)	Medicare (1.45%*J)	Life 153 * E	Medical (Premium * E)	Dental (Premium * E)	Total Benefits (K thru Q)	(J + R) TOTAL
								Date	(E*Amount)										
1	PIP004	Planner III	VACANT	N-17	\$ -	\$ -	\$ -		\$ -	\$ -	\$ -	\$ -	\$ -	\$ -				\$ -	\$ -
2	PIP005	Planner I	VACANT (Recruitment in Process)	K-1	\$ 33,911	\$ -	\$ -		\$ 33,911	\$ 10,061	\$ -	\$ -	\$ 49	\$ 153	\$ 1,572	\$ 224	\$ 12,059	\$ 45,970	
3	PIP007	Planner III	Esther G. Taitague	M-9	\$ 54,238	\$ -	\$ -	9/4/2015	\$ 126	\$ 54,364	\$ 16,130	\$ -	\$ 455	\$ 153	\$ 3,940	\$ 240	\$ 20,918	\$ 75,282	
4	PIP009	Data Control Clerk II	Peter P. Leon Guerrero	F-6	\$ 27,907	\$ -	\$ -	2/11/2015	\$ 675	\$ 28,582	\$ 8,480	\$ -	\$ 414	\$ 153	\$ 3,176	\$ 404	\$ 12,628	\$ 41,210	
5	PIP011	Planner IV	Monica J. Guerrero	N-10	\$ 61,796	\$ -	\$ -	3/25/2015	\$ 1,501	\$ 63,297	\$ 18,780	\$ -	\$ 918	\$ -	\$ 2,583	\$ 224	\$ 22,505	\$ 85,802	
Grand Total:				---	\$ 177,852	\$ -	\$ -	---	\$ 2,302	\$ 180,154	\$ 53,452	\$ -	\$ 1,836	\$ 459	\$ 11,271	\$ 1,092	\$ 68,110	\$ 248,264	

Night Differential/Hazardous/Worker's Compensation/etc.



FUNCTIONAL AREA: EXECUTIVE DIRECTION

AGENCY: BUREAU OF STATISTICS AND PLANS

PROGRAM: SOCIO-ECONOMIC PLANNING PROGRAM

FUND: GENERAL FUND - 5100A140920SE005 (requested by OFB)

Ratio: 100%

**Government of Guam  
Fiscal Year 2015 Budget  
Agency Staffing Pattern  
PROPOSED  
(Competitive Wage Plan of 2014)**

[BBMR SP-1]

Input by Department										Input by Department									
No.	(A)	(B)	(C)	(D)	(E)	(F)	(G)	(H)		(J)	(K)	(L)	(M)	(N)	(O)	(P)	(Q)	(R)	(S)
	Position Number	Position Title	Name of Incumbent	Grade/Step	Salary	Overtime	Special*	Increment		(F+G+H+J) Subtotal	Retirement (J * 29.67%)	Retire (DDI) (\$19.02*26PP*E)	Social Security (6.2% * J)	Medicare (1.45%*J)	Life 153 * E	Medical (Premium * E)	Dental (Premium * E)	Total Benefits (K thru Q)	(J + R) TOTAL
								Date	(E*Amount)										
1	SOC007	Planner III	Mildred B. Erguiza	M-10	\$55,958	0	0	1/13/2015	1,223	57,181	\$16,966	0	0	\$829	153	3,940	240	22,128	79,309
2	SOC006	Planner I	VACANT (Recruitment in Process)	K-1	\$33,911	\$0	\$0		\$0	33,911	\$10,061	\$495	\$0	\$492	153	\$1,572	\$224	\$12,997	\$46,908
3	SOC008	Planner IV	Lola E. Leon Guerrero	N-9	\$59,895	\$ -	\$ -	3/25/2016	\$ -	59,895	\$17,771	\$0	\$0	\$868	\$153	\$1,572	\$224	\$20,588	\$80,483
Grand Total:				---	\$149,764	\$0	\$0	---	\$1,223	\$150,987	\$44,798	\$495	\$0	\$2,189	\$459	\$7,084	\$688	\$55,713	\$206,700

\* Night Differential/Hazardous/Worker's Compensation/etc.

FUNCTIONAL AREA: EXECUTIVE DIRECTION

AGENCY: BUREAU OF STATISTICS AND PLANS

PROGRAM: LAND USE GIS PLANNING PROGRAM / Funded out of the Guam Coastal Management Program

FUND: FEDERAL - 5101H140930CE101 (requested by OFB)

Ratio: 100%

Government of Guam  
 Fiscal Year 2015 Budget  
 Agency Staffing Pattern  
**PROPOSED**  
 (Competitive Wage Plan of 2014)

[BBMR SP-1]

Input by Department										Input by Department										
No.	(A)	(B)	(C)	(D)	(E)	(F)	(G)	(H)		(J)	(K)	(L)	(M)	(N)	(O)	(P)		(Q)	(R)	(S)
	Position Number	Position Title	Name of Incumbent	Grade/Step	Salary	Overtime	Special*	Increment		(F+G+H+J) Subtotal	Retirement (J * 29.67%)	Retire (DDI) (\$19.02*26PP*E)	Social Security (6.2% * J)	Medicare (1.45%*J)	Life 153 * E	Medical (Premium * E)	Dental (Premium * E)	Total Benefits (K thru Q)	(J + R) TOTAL	
								Date	(E*Amount)											
1	LUP001	GIS Manager	VACANT	O-13	\$ -	\$ -	\$ -		\$ -	\$ -	\$ -	\$ -	\$ -	\$ -	\$ -	\$ -	\$ -	\$ -	\$ -	\$ -
2	LUP002	Planner II	Timothy Semuda	L-6	\$ 44,682	\$ -	\$ -	1/23/2015	\$ 1,013	\$ 45,695	\$ 13,558	\$ 495	\$ -	\$ 663	\$ 153	\$ 6,510	\$ 404	\$ 21,782	\$ 67,477	
3	LUP003	GIS Mapping Technician	VACANT	I-1	\$ -	\$ -	\$ -		\$ -	\$ -	\$ -	\$ -	\$ -	\$ -	\$ -	\$ -	\$ -	\$ -	\$ -	
<b>Grand Total:</b>					\$ 44,682	\$ -	\$ -		\$ 1,013	\$ 45,695	\$ 13,558	\$ 495	\$ -	\$ 663	\$ 153	\$ 6,510	\$ 404	\$ 21,782	\$ 67,477	

\* Night Differential/Hazardous/Worker's Compensation/etc.

FUNCTIONAL AREA: EXECUTIVE DIRECTION

AGENCY: BUREAU OF STATISTICS AND PLANS

PROGRAM: GUAM COASTAL MANAGEMENT PROGRAM

FUND: FEDERAL (Funded out of the Guam Coastal Management Program Grant) - 5101H140930CE101 (requested by OFB)

Ratio: 100%

Government of Guam  
Fiscal Year 2015 Budget  
Agency Staffing Pattern  
PROPOSED

(Competitive Wage Plan of 2014)

[BBMR SP-1]

Input by Department										Input by Department											
No.	(A)	(B)	(C)	(D)	(E)	(F)	(G)	(H)		(I)	(J)	(K)	(L)	(M)	(N)	(O)	(P)		(Q)	(R)	(S)
	Position Number	Position Title	Name of Incumbent	Grade/Step	Salary	Overtime	Special*	Increment			(F+G+H+J) Subtotal	Retirement (J * 29.67%)	Retire (DDI) (\$19.02*26PP*E)	Social Security (6.2% * J)	Medicare (1.45%*J)	Life 153 * E	Medical (Premium * E)	Dental (Premium * E)	Total Benefits (K thru Q)	(J + R) TOTAL	
1	GCMP001	Administrator	VACANT	P-1	\$ 55,488	\$ -	\$ -		\$ -	\$ -	\$ 55,488	\$ 16,463	\$ -	\$ -	\$ 805	\$ 153	\$ 3,176	\$ 404	\$ 21,001	\$ 76,489	
2	GCMP002	Planner III	Amelia DeLeon	M-11	\$ 57,734	\$ -	\$ -	8/1/2015	\$ 303	\$ 58,037	\$ 17,220	\$ -	\$ -	\$ 842	\$ 153	\$ 2,583	\$ 224	\$ 21,021	\$ 79,058		
3	GCMP003	Planner II	Raymond V.C. Caseres	M-11	\$ 57,734	\$ -	\$ -	1/8/2015	\$ 1,339	\$ 59,073	\$ 17,527	\$ -	\$ -	\$ 857	\$ 153	\$ 1,572	\$ -	\$ 20,109	\$ 79,182		
4	GCMP004	Program Coordinator III	Thomas I. Quinata	N-9	\$ 59,895	\$ -	\$ -	11/13/2015	\$ -	\$ 59,895	\$ 17,771	\$ -	\$ -	\$ 710	\$ 153	\$ 2,583	\$ 224	\$ 21,441	\$ 81,336		
5	GCMP005	Planner III	VACANT	M-13	\$ -	\$ -	\$ -		\$ -	\$ -	\$ -	\$ -	\$ -	\$ -	\$ -	\$ -	\$ -	\$ -	\$ -	\$ -	
6	GCMP007	Planner III	Teresita M. Perez	M-10	\$ 55,958	\$ -	\$ -	9/29/2015	\$ 14	\$ 55,972	\$ 16,607	\$ -	\$ -	\$ 812	\$ 153	\$ 1,572	\$ -	\$ 19,143	\$ 75,115		
8	GCMP010	Administrative Assistant	Nydia H. Llarenas	J-8	\$ 40,077	\$ -	\$ -	8/27/2015	\$ 123	\$ 40,200	\$ 11,927	\$ -	\$ -	\$ 583	\$ 153	\$ 4,688	\$ 299	\$ 17,650	\$ 57,850		
9	GCMP011	Planner II	VACANT	L-1	\$ -	\$ -	\$ -		\$ -	\$ -	\$ -	\$ -	\$ -	\$ -	\$ -	\$ -	\$ -	\$ -	\$ -	\$ -	
Grand Total:				---	\$326,886	\$0	\$0	---	\$1,779	\$328,665	\$97,515	\$0	\$0	\$4,607	\$918	\$16,174	\$1,151	\$120,365	\$449,030		

\* Night Differential/Hazardous/Worker's Compensation/etc.

FUNCTIONAL AREA: EXECUTIVE DIRECTION

AGENCY: BUREAU OF STATISTICS AND PLANS

PROGRAM: EDWARD BYRNE MEMORIAL STATE AND LOCAL LAW ENFORCEMENT FORMULA GRANT

FUND: FEDERAL - 5101H1\*0920E1109 (requested by OFB)

Ratio: 100%

**Government of Guam  
Fiscal Year 2015 Budget  
Agency Staffing Pattern  
PROPOSED  
(Competitive Wage Plan of 2014)**

[BBMR SP-1]

Input by Department										Input by Department												
No.	(A)	(B)	(C)	(D)	(E)	(F)	(G)	(H)		(I)	(J)	(K)	(L)	(M)	(N)	(O)	(P)		(Q)	(R)	(S)	
	Position Number	Position Title	Name of Incumbent	Grade/ Step	Salary	Overtime	Special*	Increment		Date	E*Amount	(F+G+H+J) Subtotal	Retirement (J * 29.67% )	Retire (DDI) (\$19.02*26PP*E)	Social Security (6.2% * J)	Benefits			Medical (Premium * E)	Dental (Premium * E)	Total Benefits (K thru Q)	(J + R) TOTAL
																Life 153 * E						
1	BYRNE001	Planner II (Rec. in Process)	VACANT	K-1	\$ 33,911	\$ -	\$ -				\$ 33,911	\$ 10,061	\$ -	\$ -	\$ 492	\$ 153	\$ 6,510	\$ 404	\$ 17,620	\$ 51,531		
2	BYRNE003	Planner I (Rec. in Process)	VACANT	K-1	\$ 33,911	\$ -	\$ -				\$ 33,911	\$ 10,061	\$ -	\$ -	\$ 492	\$ 153	\$ 6,510	\$ 404	\$ 17,620	\$ 51,531		
3	BYRNE003	Administrative Assistant	Julie Rose U. Nededog	J-8	\$ 40,077	\$ -	\$ -	8/10/2015	\$ 186		\$ 40,263	\$ 11,946	\$ -	\$ -	\$ 584	\$ 153	\$ 3,940	\$ 240	\$ 16,863	\$ 57,126		
4																						
5																						
6																						
7																						
8																						
9																						
10																						
11																						
12																						
13																						
14																						
15																						
16																						
17																						
18																						
19																						
20																						
21																						
22																						
23																						
24																						
25																						
26																						
27																						
28																						
29																						
30																						
			Grand Total:		\$ 107,899	\$ -	\$ -				\$ 186	\$ 108,085	\$ 32,069	\$ -	\$ -	\$ 1,567	\$ 459	\$ 16,960	\$ 1,048	\$ 52,103	\$ 160,188	

\* Night Differential/Hazardous/Worker's Compensation/etc.

**Government of Guam  
Fiscal Year 2015 Budget  
Agency Staffing Pattern  
PROPOSED  
(Competitive Wage Plan of 2014)**

FUNCTIONAL AREA: EXECUTIVE DIRECTION

AGENCY: BUREAU OF STATISTICS AND PLANS

PROGRAM: INTERJURISDICTIONAL FISHERIES ACT GRANT PROGRAM (100% FEDERALLY FUNDED)

(Implemented by the Planning Information Program)

FUND: FEDERAL (Funded out of the Interjurisdictional Fisheries Act Grant) - 5101H130910DC104 (requested by OFB)

Ratio: 100%

Input by Department										Input by Department										
No.	(A)	(B)	(C)	(D)	(E)	(F)	(G)	(H)		(I)	(J)	(K)	(L)	(M)	(N)	(O)	(P)	(Q)	(R)	(S)
	Position Number	Position Title	Name of Incumbent	Grade/Step	Salary	Overtime	Special*	Increment		Subtotal	Retirement (J * 29.67%)	Retire (DDI) (\$19.02*26PP*E)	Social Security (6.2% * J)	Benefits			Medical (Premium * E)	Dental (Premium * E)	Total Benefits (K thru Q)	(J + R) TOTAL
								Date	(E*Amount)					Medicare (1.45%*J)	Life 153 * E					
1	IFA001	Keypunch Operator I	VACANT	D-1	\$ -	\$ -	\$ -		\$ -	\$ -	\$ -	\$ -	\$ -	\$ -	\$ -	\$ -	\$ -	\$ -	\$ -	\$ -
2	IFA002	Data Control Clerk II	Emily M.C. Taitano	F-7	\$ 28,964	\$ -	\$ -	9/29/2015	\$ 8	\$ 28,972	\$ 8,596	\$ 495	\$ -	\$ 420	\$ 153	\$ 6,510	\$ 404	\$ 16,578	\$ 45,550	
3																				
4																				
5																				
6																				
7																				
8																				
9																				
10																				
11																				
12																				
13																				
14																				
15																				
16																				
17																				
18																				
19																				
20																				
21																				
22																				
23																				
24																				
25																				
26																				
27																				
28																				
29																				
30																				
			Grand Total:	----	\$ 28,964	\$ -	\$ -	----	\$ 8	\$ 28,972	\$ 8,596	\$ 495	\$ -	\$ 420	\$ 153	\$ 6,510	\$ 404	\$ 16,578	\$ 45,550	

\* Night Differential/Hazardous/Worker's Compensation/etc.

FUNCTIONAL AREA: EXECUTIVE DIRECTION

AGENCY: BUREAU OF STATISTICS AND PLANS

PROGRAM: GUAM DEVELOPMENTAL DISABILITIES COUNCIL (100% FEDERALLY FUNDED)

FUND: FEDERAL (Funded out of the Guam Developmental Disabilities Council Grant) - 5101H130902PA108 (requested by OFB) (Competitive Wage Plan of 2014)

Ratio: 100%

Government of Guam  
 Fiscal Year 2015 Budget  
 Agency Staffing Pattern  
 PROPOSED

[BBMR SP-1]

Input by Department										Input by Department										
No.	(A)	(B)	(C)	(D)	(E)	(F)	(G)	(H)		(J)	(K)	(L)	(M)	(N)	(O)	(P)		(Q)	(R)	(S)
	Position Number	Position Title	Name of Incumbent	Grade/Step	Salary	Overtime	Special*	Increment		(F+G+H+J) Subtotal	Retirement (J * 29.67%)	Retire (DDI) (\$19.02*26PP*E)	Social Security (6.2% * J)	Medicare (1.45%*J)	Life 153 * E	Medical (Premium * E)	Dental (Premium * E)	Total Benefits (K thru Q)	(J + R) TOTAL	
								Date	(E*Amount)											
1	GDDC001	Executive Director	Rosanne P. Ada	E-P-2	\$57,590	\$0	\$0		\$0	57,590	\$17,087	\$495	\$0	\$835	\$153	\$2,583	\$224	21,377	\$78,967	
2	GDDC002	Program Coordinator IV	Marie C. Tedtaotao-Libria	O-2	51,787	0	0	10/29/2014	1,797	53,584	\$15,898	0	0	\$777	\$153	\$3,176	\$404	20,408	73,992	
3	DDC004	Program Coordinator I	VACANT (Rec. in Process)	K-1	33,911	0	0		0	33,911	\$10,061	\$495	0	492	153	6,510	404	18,115	52,026	
4																				
5																				
6																				
7																				
8																				
9																				
10																				
11																				
12																				
13																				
14																				
15																				
16																				
17																				
18																				
19																				
20																				
21																				
22																				
23																				
24																				
25																				
26																				
27																				
28																				
29																				
30																				
			Grand Total:	---	\$143,288	\$0	\$0	---	\$1,797	\$145,085	\$43,047	\$990	\$0	\$2,104	\$459	\$12,269	\$1,032	\$59,900	\$204,985	

\* Night Differential/Hazardous/Worker's Compensation/etc.

FUNCTIONAL AREA: EXECUTIVE DIRECTION

AGENCY: BUREAU OF STATISTICS AND PLANS

PROGRAM: CORAL REEF INITIATIVE

FUND: FEDERAL (Funded out of the Coral Reef Initiative Grant) - 5101H1\*0930E1114 (requested by OFB)

Ratio: 100%

Government of Guam  
Fiscal Year 2015 Budget  
Agency Staffing Pattern  
**PROPOSED**  
(Competitive Wage Plan of 2014)

[BBMR SP-1]

Input by Department										Input by Department										
No.	(A)	(B)	(C)	(D)	(E)	(F)	(G)	(H)		(J)	(K)	(L)	(M)	(N)	(O)	(P)		(Q)	(R)	(S)
	Position Number	Position Title	Name of Incumbent	Grade/Step	Salary	Overtime	Special*	Increment		(F+G+H+J) Subtotal	Retirement (J * 29.67%)	Retire (DDI) (\$19.02*26PP*E)	Social Security (6.2% * J)	Benefits			Medical (Premium * E)	Dental (Premium * E)	Total Benefits (K thru Q)	(J + R) TOTAL
								Date	(E*Amount)					Medicare (1.45%*J)	Life 153 * E					
1	GCMP012	Special Projects Coordinator	VACANT	M-10	\$ -	\$ -	\$ -		\$ -	\$ -	\$ -	\$ -	\$ -	\$ -	\$ -	\$ -	\$ -	\$ -	\$ -	\$ -
2	GCMP013	Special Projects Coordinator	Christine I. Camacho	N-1	\$ 45,014	\$ -	\$ -		\$ -	\$ 45,014	\$ 13,356	\$ 495	\$ -	\$ 653	\$ 153	\$ 2,583	\$ 224	\$ 17,463	\$ 62,477	
3	GCMP014	Program Coordinator I	VACANT (CLTA in Process)	K-1	\$ 33,911	\$ -	\$ -		\$ -	\$ 33,911	\$ 10,061	\$ 495	\$ -	\$ 492	\$ 153	\$ 6,510	\$ 404	\$ 18,115	\$ 52,026	
4	GCMP015	Public Information Officer	VACANT (CLTA in Process)	M-1	\$ 40,762	\$ -	\$ -		\$ -	\$ 40,762	\$ 12,094	\$ 495	\$ -	\$ 591	\$ 153	\$ 6,510	\$ 404	\$ 20,247	\$ 61,009	
Grand Total:					\$ 119,687	\$ -	\$ -		\$ -	\$ 119,687	\$ 35,511	\$ 1,485	\$ -	\$ 1,735	\$ 459	\$ 15,603	\$ 1,032	\$ 55,826	\$ 175,513	

\* Night Differential/Hazardous/Worker's Compensation/etc.

**Government of Guam  
Fiscal Year 2014 Budget  
Agency Current Staffing Pattern**

FUNCTIONAL AREA: EXECUTIVE DIRECTION

DEPARTMENT/AGENCY: BUREAU OF STATISTICS AND PLANS

PROGRAM: Summary

FUND: Summary (General Fund / 100% Federal)

Input by Department															
(A)	(B)	(C)	(D)	(E)	(F)	(G)	(H)	(I)	(J)	(K)	(L)	(M)	(N)	(O)	
Division	Total Salary	Total Overtime	Total Special*	Total Increment Amt.	(B+C+D+E) Subtotal	Benefits					Medical (Premium)	Dental (Premium)	Total Benefits (G thru M)	(F + N) TOTAL	
						Retirement (F*30.03%)	Retire (DDI) (\$19.02*26PP)	Social Security (6.2% * F)	Medicare (1.45% * F)	Life (1/)					
ADMINISTRATION	\$202,228	\$0	\$0	\$967	\$203,195	\$61,019	\$495	\$0	\$2,394	\$612	\$7,402	\$452	72,374	\$275,569	
BUS. & ECONOMIC STATISTICS	273,391	0	0	2,015	275,406	82,704	990	0	3,421	1,224	19,850	1,704	109,893	385,299	
PLANNING INFORMATION PROGRAM	134,218	0	0	732	134,950	40,525	0	0	1,239	306	7,865	676	50,611	185,561	
SOCIO-ECONOMIC PLANNING	106,406	0	0	1,453	107,859	32,390	0	0	1,564	306	5,464	450	40,174	148,033	
GENERAL FUND	716,243	0	0	5,167	721,410	216,639	1,485	0	8,617	2,448	40,581	3,282	273,053	994,463	
GIS	39,780	0	0	1,044	40,824	12,259	495	0	592	153	3,687	375	17,561	58,385	
GCMP	324,935	0	0	1,009	325,944	97,881	0	0	4,643	918	14,183	1,331	118,956	444,900	
BYRNE	88,041	0	0	215	88,256	26,503	0	0	1,280	459	10,995	974	40,211	128,467	
WESPACFIN	26,453	0	0	0	26,453	7,944	495	0	384	153	6,517	375	15,867	42,320	
GDDC	130,092	0	0	0	130,092	39,067	990	0	1,886	459	9,789	825	53,016	183,108	
CRI	92,050	0	0	0	92,050	27,643	1,485	0	1,335	459	9,615	976	41,512	133,562	
100% FEDERAL	701,351	0	0	2,268	703,619	211,297	3,465	0	10,119	2,601	54,786	4,856	287,124	990,743	
GRAND TOTAL	\$1,417,594	\$0	\$0	\$7,435	\$1,425,029	\$427,936	\$4,950	\$0	\$18,736	\$5,049	\$95,367	\$8,138	\$560,176	\$1,985,205	

\* Night Differential / Hazardous / Worker's Compensation / etc.

1/: FY 2014 (current) GovGuam contribution for Life Insurance



FUNCTIONAL AREA: EXECUTIVE DIRECTION

AGENCY: BUREAU OF STATISTICS AND PLANS

PROGRAM: ADMINISTRATION

FUND: GENERAL FUND - 5100A140900GA001 (requested by OFB)

Ratio: 100%

Government of Guam  
Fiscal Year 2014 Budget  
Agency Current Staffing Pattern

[BBMR SP-1]

Input by Department											Input by Department										
No.	(A) Position Number	(B) Position Title	(C) Name of Incumbent	(D) Grade/Step	(E) Salary	(F) Overtime	(G) Special*	(H) Increment		(J) (E+F+G+I) Subtotal	(K) Retirement (J*30.03)	(L) Retire (DDI) (\$19.02*26PP)	(M) Social Security (6.2% * J)	(N) Benefits			(O) Life 153	(P) Medical (Premium)	(Q) Dental (Premium)	(R) Total Benefits (K thru Q)	(S) (J + R) TOTAL
								Date	(E*Amount)					Medicare (1.45%*J)							
1	ADM001	Director	Lorlee T. Crisostomo	L13(T-8)	\$ 75,208	\$ -	\$ -		\$ -	\$ 75,208	\$ 22,585	\$ -	\$ 0	\$ 1,091	\$ 153	\$ 3,701	\$ 226	\$ 27,785	\$ 102,963		
2	ADM002	Chief Planner	VACANT	P-18	\$ -	\$ -	\$ -		\$ -	\$ -	\$ -	\$ -	\$ -	\$ -	\$ -	\$ -	\$ -	\$ -	\$ -		
3	ADM004	WP Secretary II	Therese C. Aguon	H-17	\$ 38,120	\$ -	\$ -	2/27/2015	\$ -	\$ 38,120	\$ 11,447	\$ -	\$ -	\$ -	\$ 153	\$ 3,701	\$ 226	\$ 15,527	\$ 53,647		
4	ADM006	Administrative Services Officer	Terry L. Cuabo	N-10	\$ 46,596	\$ -	\$ -	9/26/2015	\$ -	\$ 46,596	\$ 13,993	\$ 495	\$ -	\$ 676	\$ 153	\$ -	\$ -	\$ 15,316	\$ 61,912		
5	ADM008	Administrative Assistant	Marylou S. Gogo	J-16	\$ 42,304	\$ -	\$ -	2/15/2014	\$ 967	\$ 43,271	\$ 12,994	\$ -	\$ -	\$ 627	\$ 153	\$ -	\$ -	\$ 13,775	\$ 57,046		
6	ADM003	Private Secretary	VACANT	I-08	\$ -	\$ -	\$ -		\$ -	\$ -	\$ -	\$ -	\$ -	\$ -	\$ -	\$ -	\$ -	\$ -	\$ -		
Grand Total:				---	\$ 202,228	\$ -	\$ -	---	\$ 967	\$ 203,195	\$ 61,019	\$ 495	\$ -	\$ 2,394	\$ 612	\$ 7,402	\$ 452	\$ 72,374	\$ 275,569		

Night Differential/Hazardous/Worker's Compensation/etc.

FUNCTIONAL AREA: EXECUTIVE DIRECTION

AGENCY: BUREAU OF STATISTICS AND PLANS

PROGRAM: BUSINESS & ECONOMIC STATISTICS PROGRAM

FUND: GENERAL FUND - 5100A140932E1001 (requested by OFB)

Ratio: 100%

**Government of Guam  
Fiscal Year 2014 Budget  
Agency Current Staffing Pattern**

[BBMR SP-1]

Input by Department										Input by Department											
No.	(A)	(B)	(C)	(D)	(E)	(F)	(G)	(H)		(I)	(J)	(K)	(L)	(M)	(N)	(O)	(P)		(Q)	(R)	(S)
	Position Number	Position Title	Name of Incumbent	Grade/Step	Salary	Overtime	Special*	Increment			(E+F+G+I) Subtotal	Retirement (J * 30.03%)	Retire (DDI) (\$19.02*26PP*E)	Social Security (6.2% * J)	Medicare (1.45%*J)	Life 153 * E	Medical (Premium * E)	Dental (Premium * E)	Total Benefits (K thru Q)	(J + R) TOTAL	
1	BES-001	Statistician II	Edwin S. Verzosa	J-14	\$ 39,491	\$ -	\$ -	12/17/2014	\$ -	\$ -	\$ 39,491	\$ 11,859	\$ -	\$ -	\$ -	\$ 153	\$ 1,683	\$ 226	\$ 13,921	\$ 53,412	
2	BES-002	Data Control Clerk II	Heather R. Perez	F-4	\$ 20,942	\$ -	\$ -	8/3/2014	\$ 184	\$ -	\$ 21,126	\$ 6,344	\$ 495	\$ -	\$ 306	\$ 153	\$ -	\$ -	\$ 7,298	\$ 28,424	
3	BES-003	Statistical Technician II	VACANT	F-1	\$ -	\$ -	\$ -		\$ -	\$ -	\$ -	\$ -	\$ -	\$ -	\$ -	\$ -	\$ -	\$ -	\$ -	\$ -	
4	BES-004	Statistical Technician II	Bertha M. Toves	F-16	\$ 32,517	\$ -	\$ -	4/21/2014	\$ 570	\$ -	\$ 33,087	\$ 9,936	\$ -	\$ -	\$ 480	\$ 153	\$ -	\$ -	\$ 10,569	\$ 43,656	
5	BES-005	Statistician I	Antonette Pitter	I-14	\$ 36,816	\$ -	\$ -	6/17/2014	\$ 430	\$ -	\$ 37,246	\$ 11,185	\$ 495	\$ -	\$ 540	\$ 153	\$ 3,607	\$ 375	\$ 16,355	\$ 53,601	
6	BES-006	Statistician II	Selina C. Tenorio	J-11	\$ 35,618	\$ -	\$ -	2/4/2014	\$ 831	\$ -	\$ 36,449	\$ 10,946	\$ -	\$ -	\$ 529	\$ 153	\$ 3,781	\$ 224	\$ 15,632	\$ 52,081	
7	BES-007	Statistical Technician I	Mernalee A. Sablan	E-4	\$ 19,779	\$ -	\$ -	4/26/2014	\$ -	\$ -	\$ 19,779	\$ 5,940	\$ -	\$ -	\$ 287	\$ 153	\$ 6,517	\$ 375	\$ 13,271	\$ 33,050	
8	BES-010	Statistical Technician I	VACANT	E-1	\$ -	\$ -	\$ -		\$ -	\$ -	\$ -	\$ -	\$ -	\$ -	\$ -	\$ -	\$ -	\$ -	\$ -	\$ -	
9	BES-011	Planning Technician I	VACANT	H-11	\$ -	\$ -	\$ -		\$ -	\$ -	\$ -	\$ -	\$ -	\$ -	\$ -	\$ -	\$ -	\$ -	\$ -	\$ -	
10	BES-012	Statistical Technician I	Marietta Balbastro	E-13	\$ 27,700	\$ -	\$ -	11/12/2015	\$ -	\$ -	\$ 27,700	\$ 8,318	\$ -	\$ -	\$ 402	\$ 153	\$ 2,579	\$ 278	\$ 11,730	\$ 39,430	
11	BES-013	Chief Economist	Albert M. Perez	Q-10	\$ 60,528	\$ -	\$ -	9/5/2015	\$ -	\$ -	\$ 60,528	\$ 18,177	\$ -	\$ -	\$ 878	\$ 153	\$ 1,683	\$ 226	\$ 21,116	\$ 81,644	
Grand Total:				---	\$273,391	\$0	\$0	---	\$2,015	\$275,406	\$82,704	\$990	\$0	\$3,421	\$1,224	\$19,850	\$1,704	\$109,893	\$385,299		

\* Night Differential/Hazardous/Worker's Compensation/etc.

Government of Guam
Fiscal Year 2014 Budget
Agency Current Staffing Pattern

Table with columns (A) through (S) including Position Number, Title, Name of Incumbent, Salary, Overtime, Increment, Retirement, Benefits, Medical, Dental, and Total Benefits. Includes a Grand Total row at the bottom.

Night Differential/Hazardous/Worker's Compensation/etc.



FUNCTIONAL AREA: EXECUTIVE DIRECTION

AGENCY: BUREAU OF STATISTICS AND PLANS

PROGRAM: LAND USE GIS PLANNING PROGRAM / Funded out of the Guam Coastal Management Program

FUND: FEDERAL - 5101H140930CE101 (requested by OFB)

Ratio: 100%

**Government of Guam  
Fiscal Year 2014 Budget  
Agency Current Staffing Pattern**

[BBMR SP-1]

Input by Department										Input by Department										
No.	(A)	(B)	(C)	(D)	(E)	(F)	(G)	(H)		(J)	(K)	(L)	(M)	(N)	(O)	(P)	(Q)	(R)	(S)	
	Position Number	Position Title	Name of Incumbent	Grade/Step	Salary	Overtime	Special*	Increment		(E+F+G+I) Subtotal	Retirement (J * 30.03%)	Retire (DDI) (\$19.02*26PP*E)	Social Security (6.2% * J)	Benefits			Medical (Premium * E)	Dental (Premium * E)	Total Benefits (K thru Q)	(J + R) TOTAL
								Date	(E*Amount)					Medicare (1.45%*J)	Life 153 * E					
1	LUP001	GIS Manager	VACANT	O-13	\$ -	\$ -	\$ -		\$ -	\$ -	\$ -	\$ -	\$ -	\$ -	\$ -	\$ -	\$ -	\$ -	\$ -	
2	LUP002	Planner II	Timothy Semuda	L-10	\$ 39,780	\$ -	\$ -	1/23/2014	\$ 1,044	\$ 40,824	\$ 12,259	\$ 495	\$ -	\$ 592	\$ 153	\$ 3,687	\$ 375	\$ 17,561	\$ 58,385	
3	LUP003	GIS Mapping Technician	VACANT	I-1	\$ -	\$ -	\$ -		\$ -	\$ -	\$ -	\$ -	\$ -	\$ -	\$ -	\$ -	\$ -	\$ -	\$ -	
Grand Total:					\$ 39,780	\$ -	\$ -		\$ 1,044	\$ 40,824	\$ 12,259	\$ 495	\$ -	\$ 592	\$ 153	\$ 3,687	\$ 375	\$ 17,561	\$ 58,385	

\* Night Differential/Hazardous/Worker's Compensation/etc.

FUNCTIONAL AREA: EXECUTIVE DIRECTION

AGENCY: BUREAU OF STATISTICS AND PLANS

PROGRAM: GUAM COASTAL MANAGEMENT PROGRAM

FUND: FEDERAL (Funded out of the Guam Coastal Management Program Grant) - 5101H140930CE101 (requested by OFB)

Ratio: 100%

**Government of Guam**  
**Fiscal Year 2014 Budget**  
**Agency Current Staffing Pattern**

[BBMR SP-1]

Input by Department										Input by Department											
No.	(A)	(B)	(C)	(D)	(E)	(F)	(G)	(H)		(I)	(J)	(K)	(L)	(M)	(N)	(O)	(P)		(Q)	(R)	(S)
	Position Number	Position Title	Name of Incumbent	Grade/Step	Salary	Overtime	Special*	Increment			(E+F+G+I) Subtotal	Retirement (J * 30.03%)	Retire (DDI) (\$19.02*26PP*E)	Social Security (6.2% * J)	Medicare (1.45%*J)	Life 153 * E	Medical (Premium * E)	Dental (Premium * E)	Total Benefits (K thru Q)	(J + R) TOTAL	
								Date	(E*Amount)												
1	GCMP001	Administrator	VACANT	P-18	\$ 72,785	\$ -	\$ -	-	\$ -	\$ -	\$ 72,785	\$ 21,857	\$ -	\$ -	\$ 1,055	\$ 153	\$ 3,607	\$ 375	\$ 27,048	\$ 99,833	
2	GCMP002	Planner III	Amelia DeLeon	M-17	\$ 54,731	\$ -	\$ -	8/1/2015	\$ -	\$ -	\$ 54,731	\$ 16,436	\$ -	\$ -	\$ 794	\$ 153	\$ 1,683	\$ 226	\$ 19,291	\$ 74,022	
3	GCMP003	Planner II	Raymond V.C. Caseres	M-17	\$ 54,731	\$ -	\$ -	1/8/2015	\$ -	\$ -	\$ 54,731	\$ 16,436	\$ -	\$ -	\$ 794	\$ 153	\$ 1,683	\$ 226	\$ 19,291	\$ 74,022	
4	GCMP004	Program Coordinator III	Thomas I. Quinata	M-17	\$ 54,731	\$ -	\$ -	12/11/2014	\$ -	\$ -	\$ 54,731	\$ 16,436	\$ -	\$ -	\$ 710	\$ 153	\$ 2,401	\$ 226	\$ 19,926	\$ 74,657	
5	GCMP005	Planner III	VACANT	M-13	\$ -	\$ -	\$ -	-	\$ -	\$ -	\$ -	\$ -	\$ -	\$ -	\$ -	\$ -	\$ -	\$ -	\$ -	\$ -	
6	GCMP007	Planner III	Teresita M. Perez	M-16	\$ 51,092	\$ -	\$ -	9/29/2014	\$ 149	\$ -	\$ 51,241	\$ 15,388	\$ -	\$ -	\$ 743	\$ 153	\$ -	\$ -	\$ 16,284	\$ 67,525	
8	GCMP010	Administrative Assistant	Nydia H. Llarenas	J-12	\$ 36,865	\$ -	\$ -	2/27/2014	\$ 860	\$ -	\$ 37,725	\$ 11,329	\$ -	\$ -	\$ 547	\$ 153	\$ 4,809	\$ 278	\$ 17,116	\$ 54,841	
9	GCMP011	Planner II	VACANT	L-1	\$ -	\$ -	\$ -	-	\$ -	\$ -	\$ -	\$ -	\$ -	\$ -	\$ -	\$ -	\$ -	\$ -	\$ -	\$ -	
<b>Grand Total:</b>				----	\$324,935	\$0	\$0	----	\$1,009	\$325,944	\$97,881	\$0	\$0	\$4,643	\$918	\$14,183	\$1,331	\$118,956	\$444,900		

\* Night Differential/Hazardous/Worker's Compensation/etc.

FUNCTIONAL AREA: EXECUTIVE DIRECTION

AGENCY: BUREAU OF STATISTICS AND PLANS

PROGRAM: EDWARD BYRNE MEMORIAL STATE AND LOCAL LAW ENFORCEMENT FORMULA GRANT

FUND: FEDERAL - 5101H1\*0920E1109 (requested by OFB)

Ratio: 100%

**Government of Guam**  
**Fiscal Year 2014 Budget**  
**Agency Current Staffing Pattern**

[BBMR SP-1]

Input by Department										Input by Department											
No.	(A)	(B)	(C)	(D)	(E)	(F)	(G)	(H)		(I)	(J)	(K)	(L)	(M)	(N)	(O)	(P)		(Q)	(R)	(S)
	Position Number	Position Title	Name of Incumbent	Grade/Step	Salary	Overtime	Special*	Increment			(E+F+G+I) Subtotal	Retirement (J * 30.03%)	Retire (DDI) (\$19.02*26PP*E)	Social Security (6.2% * J)	Medicare (1.45%*J)	Life 153 * E	Medical (Premium * E)	Dental (Premium * E)	Total Benefits (K thru Q)	(J + R) TOTAL	
								Date	(E*Amount)												
1	BYRNE001	Planner II (Rec. in Process)	VACANT	L-1	\$ 26,520	\$ -	\$ -				\$ 26,520	\$ 7,964	\$ -	\$ -	\$ 385	\$ 153	\$ 3,607	\$ 375	\$ 12,483	\$ 39,003	
2	BYRNE003	Planner I (Rec. in Process)	VACANT	K-1	\$ 24,656	\$ -	\$ -		\$ -		\$ 24,656	\$ 7,404	\$ -	\$ -	\$ 358	\$ 153	\$ 3,607	\$ 375	\$ 11,897	\$ 36,553	
3	BYRNE003	Administrative Assistant	Julie Rose U. Nededog	J-12	\$ 36,865	\$ -	\$ -	8/10/2014	\$ 215		\$ 37,080	\$ 11,135	\$ -	\$ -	\$ 538	\$ 153	\$ 3,781	\$ 224	\$ 15,831	\$ 52,911	
4																					
5																					
6																					
7																					
8																					
9																					
10																					
11																					
12																					
13																					
14																					
15																					
16																					
17																					
18																					
19																					
20																					
21																					
22																					
23																					
24																					
25																					
26																					
27																					
28																					
29																					
30																					
			Grand Total:	---	\$ 88,041	\$ -	\$ -	---	\$ 215		\$ 88,256	\$ 26,503	\$ -	\$ -	\$ 1,280	\$ 459	\$ 10,995	\$ 974	\$ 40,211	\$ 128,467	

\* Night Differential/Hazardous/Worker's Compensation/etc.

Government of Guam  
Fiscal Year 2014 Budget  
Agency Current Staffing Pattern

[BBMR SP-1]

FUNCTIONAL AREA: EXECUTIVE DIRECTION

AGENCY: BUREAU OF STATISTICS AND PLANS

PROGRAM: INTERJURISDICTIONAL FISHERIES ACT GRANT PROGRAM (100% FEDERALLY FUNDED) (Implemented by the Planning Information Program)

FUND: FEDERAL (Funded out of the Interjurisdictional Fisheries Act Grant) - 5101H130910DC104 (requested by OFB)

Ratio: 100%

Input by Department										Input by Department										
No.	(A) Position Number	(B) Position Title	(C) Name of Incumbent	(D) Grade/Step	(E) Salary	(F) Overtime	(G) Special*	(H) Increment		(J) Subtotal	(K) Retirement (J * 30.03%)	(L) Retire (DDI) (\$19.02*26PP*E)	(M) Social Security (6.2% * J)	(N) Benefits			(P) Medical (Premium * E)	(Q) Dental (Premium * E)	(R) Total Benefits (K thru Q)	(S) (J + R) TOTAL
								Date	(E*Amount)					Life 153 * E	Medicare (1.45%*J)	Life 153 * E				
1	IFA001	Keypunch Operator I	VACANT	E-1	\$ -	\$ -	\$ -		\$ -	\$ -	\$ -	\$ -	\$ -	\$ -	\$ -	\$ -	\$ -	\$ -	\$ -	\$ -
2	IFA002	Data Control Clerk II	Emily M.C. Taitano	F-10	\$ 26,453	\$ -	\$ -	3/29/2015	\$ -	\$ 26,453	\$ 7,944	\$ 495	\$ -	\$ 384	\$ 153	\$ 6,517	\$ 375	\$ 15,867	\$ 42,320	
3																				
4																				
5																				
6																				
7																				
8																				
9																				
10																				
11																				
12																				
13																				
14																				
15																				
16																				
17																				
18																				
19																				
20																				
21																				
22																				
23																				
24																				
25																				
26																				
27																				
28																				
29																				
30																				
			Grand Total:	---	\$ 26,453	\$ -	\$ -	---	\$ -	\$ 26,453	\$ 7,944	\$ 495	\$ -	\$ 384	\$ 153	\$ 6,517	\$ 375	\$ 15,867	\$ 42,320	

\* Night Differential/Hazardous/Worker's Compensation/etc.



FUNCTIONAL AREA: EXECUTIVE DIRECTION

AGENCY: BUREAU OF STATISTICS AND PLANS

PROGRAM: GUAM DEVELOPMENTAL DISABILITIES COUNCIL (100% FEDERALLY FUNDED)

FUND: FEDERAL (Funded out of the Guam Developmental Disabilities Council Grant) - 5101H130902PA108 (requested by OFB)

Ratio: 100%

**Government of Guam  
Fiscal Year 2014 Budget  
Agency Current Staffing Pattern**

[BBMR SP-1]

Input by Department										Input by Department											
No.	(A)	(B)	(C)	(D)	(E)	(F)	(G)	(H)		(I)	(J)	(K)	(L)	(M)	(N)	(O)	(P)		(Q)	(R)	(S)
	Position Number	Position Title	Name of Incumbent	Grade/Step	Salary	Overtime	Special*	Increment			(E+F+G+I) Subtotal	Retirement (J * 30.03%)	Retire (DDI) (\$19.02*26PP*E)	Social Security (6.2% * J)	Medicare (1.45%*J)	Life 153 * E	Medical (Premium * E)	Dental (Premium * E)	Total Benefits (K thru Q)	(J + R) TOTAL	
1	GDDC001	Executive Director	Rosanne P. Ada	P-11	\$57,209	\$0	\$0		\$0		57,209	\$17,180	\$495	\$0	\$830	\$153	\$2,401	\$226	21,284	\$78,493	
2	GDDC002	Program Coordinator IV	Marie C. Tedtaotao-Libria	N-11	48,227	0	0	10/29/2014	0		48,227	\$14,483	0	0	\$699	\$153	\$3,781	\$224	19,340	67,567	
3	DDC004	Program Coordinator I	VACANT (Rec. in Process)	K-1	24,656	0	0		0		24,656	\$7,404	\$495	0	358	153	3,607	375	12,392	37,048	
4																					
5																					
6																					
7																					
8																					
9																					
10																					
11																					
12																					
13																					
14																					
15																					
16																					
17																					
18																					
19																					
20																					
21																					
22																					
23																					
24																					
25																					
26																					
27																					
28																					
29																					
30																					
			Grand Total:	---	\$130,092	\$0	\$0	---	\$0		\$130,092	\$39,067	\$990	\$0	\$1,886	\$459	\$9,789	\$825	\$53,016	\$183,108	

\* Night Differential/Hazardous/Worker's Compensation/etc.

FUNCTIONAL AREA: EXECUTIVE DIRECTION

AGENCY: BUREAU OF STATISTICS AND PLANS

PROGRAM: CORAL REEF INITIATIVE

FUND: FEDERAL (Funded out of the Coral Reef Initiative Grant) - 5101H1\*0930E1114 (requested by OFB)

Ratio: 100%

Government of Guam  
Fiscal Year 2014 Budget  
Agency Current Staffing Pattern

[BBMR SP-1]

Input by Department										Input by Department										
No.	(A)	(B)	(C)	(D)	(E)	(F)	(G)	(H)		(J)	(K)	(L)	(M)	(N)	(O)	(P)	(Q)	(R)	(S)	
	Position Number	Position Title	Name of Incumbent	Grade/Step	Salary	Overtime	Special*	Increment		(E+F+G+I) Subtotal	Retirement (J * 30.03%)	Retire (DDI) (\$19.02*26PP*E)	Social Security (6.2% * J)	Benefits			Medical (Premium * E)	Dental (Premium * E)	Total Benefits (K thru Q)	(J + R) TOTAL
								Date	(E*Amount)					Medicare (1.45%*J)	Life 153 * E					
1	GCMP012	Special Projects Coordinator	VACANT	M-10	\$ -	\$ -	\$ -		\$ -	\$ -	\$ -	\$ -	\$ -	\$ -	\$ -	\$ -	\$ -	\$ -	\$ -	
2	GCMP013	Special Projects Coordinator	Christine I. Camacho	M-7	\$ 38,716	\$ -	\$ -		\$ -	\$ 38,716	\$ 11,626	\$ 495	\$ -	\$ 561	\$ 153	\$ 2,401	\$ 226	\$ 15,463	\$ 54,179	
3	GCMP014	Program Coordinator I	VACANT (CLTA in Process)	K-1	\$ 24,656	\$ -	\$ -		\$ -	\$ 24,656	\$ 7,404	\$ 495	\$ -	\$ 358	\$ 153	\$ 3,607	\$ 375	\$ 12,392	\$ 37,048	
4	GCMP015	Public Information Officer	VACANT (CLTA in Process)	M-1	\$ 28,678	\$ -	\$ -		\$ -	\$ 28,678	\$ 8,612	\$ 495	\$ -	\$ 416	\$ 153	\$ 3,607	\$ 375	\$ 13,658	\$ 42,336	
Grand Total:					\$ 92,050	\$ -	\$ -		\$ -	\$ 92,050	\$ 27,643	\$ 1,485	\$ -	\$ 1,335	\$ 459	\$ 9,615	\$ 976	\$ 41,512	\$ 133,562	

\* Night Differential/Hazardous/Worker's Compensation/etc.

**Government of Guam  
Federal Program Inventory  
FY 2014 (Current) / FY 2015 (Estimated) Funding**

[BBMR FP-1]Rev

FUNCTION: EXECUTIVE DIRECTION  
AGENCY: BUREAU OF STATISTICS AND PLANS  
PROGRAM: FEDERAL GRANTS

	A	B	C	D	E	F	G	H	I
Federal Grantor Agency / Federal Project Title	C.F.D.A. No. / Enabling Authority	Grant Award Number	Match Ratio Federal / Local:	FY 2014	FY 2015				
				YTD (Current) Funding	Estimated Funding	Local Matching Funds	Federal Matching Funds	100% Federal Grants	Grant Period
U.S. Department of Interior/Coral Reef Management Grant	15.875	CRI-GU-13	100%	\$75,000	\$75,000	\$0	\$0	\$75,000	10/01/12-4/30/2015
U.S. Department of Commerce / NOAA Coral Reef Conservation Grant	11.426	NA13NOS482001	100%	\$556,287	\$556,287	\$0	\$0	\$556,287	10/01/13 - 09/30/2015
U.S. Department of Commerce NOAA/Guam Coastal Management Program	11.419	NA12NOS4190167	100%	\$819,500	\$819,500	\$0	\$0	\$819,500	10/01/13 - 03/31/2015
U.S. Department of Commerce NOAA/ Interjurisdictional Fisheries Act (IFA)	11.407	NA13NMF4070172	100%	\$7,969	\$8,327	\$0	\$0	\$8,327	10/01/13 - 09/30/2017
WESTPACFIN Cooperative Agreement	11.437	NA13NMF437019	100%	\$40,000	\$40,000	\$0	\$0	\$40,000	7/01/12 - 06/30/2016
U.S. Department of Justice/Guam Residential Substance Abuse and Treatment Prog.	16.593	2013-RT-BX-0053	100%	\$43,835	\$43,835	\$0	\$0	\$43,835	10/01/13 - 09/30/2017
U.S. Department of Justice/Paul Coverdell Science Improvement Grant	16.742	2013-CD-BX-0006	100%	\$58,186	\$58,186	\$0	\$0	\$58,186	10/01/14 - 09/30/2015
U.S. Department of Justice/Edward Byrne Justice Assistance Grant	16.738	2013-MU-BX-0045	100%	\$723,460	\$723,460	\$0	\$0	\$723,460	10/01/13 - 09/30/2017
U.S. Department of Health & Human Services; Guam Developmental Disabilities Council	93.630	G1301GUBSDD	100%	\$235,156	\$235,156			\$235,156	10/01/2014 - 09/30/2015

**BUREAU OF STATISTICS AND PLANS**  
**Office Furniture & Equipment Inventory**

TYPE	PROGRAM	DESCRIPTION
<b>PLANNING INFORMATION PROGRAM</b>		
Printer	ADM 2004	HP 4600 DN Printer; S# JPDKC39849
Printer	BSP/COM	HP LaserJet 8000N Printer; S# JPBGC39849; CD000234356
Printer	PIP	HP LaserJet 5, S# USKC092758
Projector	ADM 2006	Multi Digital Projector; Dell w/ case; S# DSSJT91
Velo Bind Machine	ADM 2006	GBC Electric Velo Bind System3 Pro Model# 9707048; S# S145168E
Notebook	ADM 2006	Dell Latitude Notebook; S# 42VQSB1
Storage Cabinet	ADM 2006	Metal Storage Cabinet w/ lock; Beige
Digital Camera	ADM 2006	Cybershot DSC-W100 Digital Camera w/ Accessories; 8.1 MPX
Desk	PIP	Brown, 6-Drawer
Desk	PIP	Brown, 4-Drawer
Chair	PIP	Brown, No Arm
Chair	PIP	Tan, With Arm
<b>Calvin Saruwatari</b>		
Desk	GOV'T	Gray w/ White Top, 6-Drawers
Table	GOV'T	Gray w/ White Top, 1-Drawer, Metal
File Cabinet	GOV'T	Gray, Filing Cabinet, 2-Drawers
File Cabinet	GOV'T	Gray, Filing Cabinet, 2-Drawers, Govt# 1-1050-2
Monitor (New)	Admin 2004	CN-05Y232-71618-45E-ADS6
Keyboard (New)	Admin 2004	CN-0G0842-71616-41H-5654
Mouse (New)	Admin 2004	S# 418020239
CPU (New)	Admin 2004	18CX451
<b>Janet Quitugua</b>		
Desk	PIP	Black w/Brown Top, 7-Drawers
Telephone	ADM	Meridian Phone, Beige (475-9679) #2
Monitor (New)	Admin 2004	CN-05Y232-71618-45E-ADCC
Keyboard (New)	Admin 2004	CN-0G0842-71616-41H-5653
Mouse (New)	Admin 2004	S# 418017450
CPU (New)	Admin 2004	58CX451
<b>Monica Guerrero</b>		
Desk	PIP	Black w/Brown Top, 7-Drawers
Telephone	ADM	Meridian Phone, Beige (475-9679) #1
Monitor (New)	Admin 2004	CN-05Y232-71618-45E-ADS7
Keyboard (New)	Admin 2004	CN- 0G0842-71616-41H-5652

Mouse (New)	Admin 2004	S# 418017409
CPU (New)	Admin 2004	F7CX451
Speaker	Y2K	4Q Super SubWoofer System w/ 4Q NT Speakers (On Commerce Computer)
<b>Monica Guerrero (SPC PRISM Equipment)</b>		
Monitor	SPC PRISM	Sony Trinitron Color Computer Display Monitor, Manufactured June 2002; Model # CPD-E230; Serial # 2605616
CPU	SPC PRISM	CPU (Includes a:drive, zip drive, DVD ROM, CD-RW) Geared by MSI No.1590
Printer	SPC PRISM	HP LaserJet 1200 Series Printer; Serial # CNBJD48707
Battery Backup	SPC PRISM	APC Battery Backup 650VA; Model # BK650MC; Serial # PB0238113001
Keyboard	SPC PRISM	Microsoft Internet Keyboard; Serial # 5167708245429
Speakers	SPC PRISM	Arido Speakers (2)
Mouse	SPC PRISM	Logitech Optical Mouse
<b>BSP Add On from Department of Commerce : PL 26-76; EO 2002-14</b>		
Lamp	COMMERCE	Standing Lamp, Black @ 1 (TA) Storage
Lamp	COMMERCE	Standing Lamp, Black @ 1 (PIP)
Computer Table	COMMERCE	Computer Table w/ Wheels (Adm)
File Cabinet	COMMERCE	Metal Filing Cabinet, 2-Drawers, Beige (TC)
File Cabinet	COMMERCE	Metal Filing Cabinet, 2-Drawers, Beige (ME)
Easel Board	COMMERCE	Black Folding Easel Board (Storage)
Desk	COMMERCE	Wooden Executive Desk, 7-Drawers (IL)
Work Station	COMMERCE	Metal Computer Work Station, 1-Drawer (IL)
Credenza	COMMERCE	Wooden Credenza Unit (IL)
Chair	COMMERCE	Executive Rolling Chair 1/ Arm Rest (IL)
File Cabinet	COMMERCE	Metal Filing Cabinet, 2-Drawer (IL)
Shelf	COMMERCE	Black Grill Shelf, 4 wall unit @ 2 (IL)
File Carts	COMMERCE	Rolling Hanging File Carts @ 2 (IL)
Monitor	COMMERCE	Smile Intel Monitor, S# SC1NKU5A24657 (Adm)
CPU	COMMERCE	Dimension System CPU, S# 960420 (Adm)
File Cabinet	COMMERCE	Filing Cabinet, Gray, 4-Drawers (Adm)
Keyboard	COMMERCE	Dell Keyboard, S# 37172-998-4568 (Adm)
Mouse	COMMERCE	Microsoft Serial Mouse, S# 00693292 (Adm)
Mouse	COMMERCE	BSR Mouse, S# G205001015 (Adm)
File Cabinet	COMMERCE	Filing Cabinet, Black, 5-Drawers (MG)
File Cabinet	COMMERCE	Filing Cabinet, Beige, 4-Drawers (MG)
Shelf	COMMERCE	Wooden Standing Shelf, Three Drawers with Open Pull Down Shelf @ 3
File Cabinet	ADM - 2005	Metal Beige Sliding Glass Doors with Key Lock, # 115
File Cabinet	ADM - 2005	Metal Beige Sliding Glass Doors with Key Lock, # 076
File Cabinet	ADM - 2005	Metal Beige Sliding Glass Doors with Key Lock, # 131

File Cabinet	ADM - 2005	Metal Beige Sliding Glass Doors with Key Lock, # 137
File Cabinet	ADM - 2005	Metal Beige Sliding Glass Doors with Key Lock, # 124
File Cabinet	ADM - 2005	Metal Beige Sliding Glass Doors with Key Lock, # 039
File Cabinet	ADM - 2005	Metal Beige Sliding Glass Doors with Key Lock, # 299
<b>FINANCIAL SECTION</b>		
<b>Terry Cuabo</b>		
CPU	ADM - 2003	BF6M431
Monitor	ADM - 2003	KR-07R477-48324-361-01RK
Keyboard	ADM - 2003	CN-06W610-38842-359-9P39
Mouse	ADM - 2003	6U220 S# LZF31620331
Speakers	ADM - 2003	Model AD215; S# CN-0R0240-69800-35F-1173
UPS	COMMERCE	Cyber Power Battery BackUp 585AVR, S# BHA2U1620968
UPS	BSP	Black; Model #OP-82S; S# BJA351600939
Table	COMMERCE	Gray Working Table
Telephone	BYRNE	Meridian Phone, Blk (475-9678) #2
Chair	BSP	Black; Medium High back; w/ 2 arm rest
Desk	SOCIO	Black Metal Desk w/ Brown Top
Desk	SPG	Computer Desk w/ Rollers, Oak Color (SPG)
<b>Nydia Llarenas</b>		
Telephone	GCMP	Meridian Phone, Beige (475-9664)
UPS	COMMERCE	Cyber Power Battery BackUp 585AVR, S# BHA2U1620986
Monitor	COMMERCE	Dell Monitor; Black; S# CN-05Y232-71618-426-BBP2
CPU	GCMP2004	Dell CPU; Black; S# B67BG41
Zip Drive	GCMP2004	External Iomega; S# IGAP46879X
Keyboard	GCMP2004	Dell Keyboard; Black; S# CN-0G0842-71616-305-0176
Mouse	GCMP2004	Dell Mouse; Black; S# LNA34918650
Desk	COMMERCE	Office Desk, Black with Brown Top, 7-Drawers
Table	COMMERCE	Table with Wheels, Brown, 2-Level
Chair	COMMERCE	Chair - low back with no arms, Blue
Typewriter	COMMERCE	IBM WheelWriter 1500 by Lexmark; S# 11-PN256 (Rese has computer)
File Cabinet	COMMERCE	Filing Cabinet, Beige, 4-Drawers
File Cart	COMMERCE	File cart with wheels, Black
Calculator	GCMP	Canon MP21DX, 12-Digit Adding Machine; S# 2041973
UPS	COMMERCE	CYBER POWER 3255 Watts 585 AVR; S# BHA2U1620908
Shredder	COMMERCE	Fellowes Power Shred PS70; S# 070991110A10400129644
Speaker	ADM - 2003	Altec Lansing Speaker; S#CN-ORO240-69800-35F-1161
UPS	ADM	APC Smart UPS 1000; S#WS9951003361 Transferred to Albert M. Perez 3/2007

Printer	GCMP	HP LaserJet 5; S# USKC110101
Typewriter	GCMP	IBM Wheel Writer 1500 by LexMark; S#11RN141
Table	GCMP	Typewriter Metal Table, Beige
Desk	GCMP	Brown Wooden Desk, 2 Drawers w/ 2-Drawer End Table and Shelves
Filing Cabinet	GCMP	Beige Filing Cabinet, Lateral Cabinets with Lift Covers, 4x4, 4-Shelfs @ 2
Filing Cabinet	BYRNE 1997	Beige Filing Cabinet, Lateral Cabinets with Lift Covers, 4X4, 4 Shelves @ 2
File Cabinet	Health Planning	Beige Filing Cabinet, Lateral Cabinets with Lift Covers, 4X4, 4-Shelfs @ 1
File Cabinet	ADM	Filing Cabinets; Beige; R33S; 4-Drawer
File Cabinet	ADM	Filing Cabinets; Beige; R238; 4-Drawer
File Cabinet	ADM	Filing Cabinets; Black; 22S; 4-Drawer
Stamp Machine	GCMP	Pitney Bowes Postage Stamp Machine, Model B700; DM100; S# 0002644249
Telephone	GCMP	Meridian Phone, Black (475-9677)
Shelf	GCMP	Wooden Brown Shelf, 4-Shelves
Table	GCMP	Brown Table, 2-Shelves with Wheels
Chair	GCMP	Brown Low Back w/ Arms
Chair	GCMP	Brown w/ no Arms
Line Conditioner	BYRNE 1999	Tripp-Lite Line Conditioner 1800W 87-140V, S# 9126APOLC368400014 (MP)
Fan	ADM	Standing Fan ; White; Model F56-40; EMD
<b>Julie Nededog</b>		
Line Conditioner	BYRNE 1999	Tripp-Lite Line Stabilizer/Conditioner LC1800; S# 9126APOLC368400015
Desk	PIP	Black w/Brown Top, 7-Drawers
Chair	PIP	Beige High Back, Blk Arm, Blk Pedestal
Computer Desk	PIP	Computer Desk, Three Shelf, Gray
Telephone	BYRNE	Meridian Phone, Beige (475-9678)
File Cabinet	PIP	Gray, 4-Drawers
Keyboard	GCMP	EPS Keyboard, S# 40440711
SmartPrint	GCMP	Smart Print Printer Sharing Network; S# 7131768 (Old Computer)
SmartPrint	GCMP	Smart Print Printer Sharing Network; S# 7131733 (New Computer)
UPS	GCMP	APC Smart Ups 700VA, S# SQS0225331490
Line Conditioner	GCMP	Line Conditioner 1800W 87-140V, S# 9126APOLC368400029
Zip Drive (MACIE - 06/11/03)	COMMERCE	Iomega Zip 100, P/N# 30220101, M# 2100USBNC; S# C6CM08E9GH
Calculator	COMMERCE	Canon P220-DH Heavy Duty Printing Calculator; 12 Digit; 2 Color
UPS	SPG	One UPS Plus (SPG#2) LP283A255 (Ricky Sanchez)
Power Supply	COMMERCE	Battery BackUp Power Supply/600VA, Black (Ricky Sanchez)
Typewriter	Health Planning	IBM Wheelwriter 30 Series II; S# 11-RM276; Gov't Tag# 4280000494
Monitor	Byrne	Dell Monitor; Black; S#

CPU	Byrne	Dell OptiPlex GX620; CPU; Blk; S#
Keyboard	Byrne	Dell Keyboard; Blk; S# CN-OT6867-37172-63G-01WI
Mouse	Byrne	Dell Mouse; BLK w/Gray; S# F0100FY0

**Assigned to Ermie So at DOA-Federal Programs**

Monitor	BYRNE 1997	Dell; S# 7221DDQKF7A9
CPU	BYRNE 1997	Dell OptiPlex GXI; S# 8XA35
Keyboard	BYRNE 1997	Microsoft (Byrne- Miki's)
Mouse	BYRNE 1997	IBM PS/2 Mouse; S# 72-0508344 (Calvin)
UPS	BYRNE 1997	APC SmartUps 700; S# 9515

**Director's Office**

**ADMIN SECTION (NOTEBOOK COMPUTER) RETURNED ON MAY 28, 2006 - Tony Sanchez**

Notebook	ADM-2003	Dell Latitude D610, Pentium M 760, S# 07898349890528, CN-0D4571-48643-55T-7317
Floppy Drive Int/Ext	ADM-2003	Floppy Drive, Int/Ext; S# PH-0C8830-17601-54Q-E04X Missing(Tony Sanchez)
Mouse	ADM-2003	Dell USB 2 Button Optical Mouse w/ Scroll; CN-0D1161-71581-53H-06UO; S# 511041760
90W AC Adapter	ADM-2003	Dell Factory Tied AC Adapter; S# CN-OC2894-48661-558-8402
Chair	ADMIN	Brown Wooden Chairs w/ Arms @ 3

**Director's Office (NEW COMPUTER) Loaned to John Dela Rosa, Governors' Office**

CPU	ADM - 2003	Dell : 00045-440-594-044; FM2JC-CWYXQ-TJKVTJ-X08-73060 Returned 10/07/05
Monitor	ADM - 2003	Dell: MX-07R477-48323-37G-0B0Y Returned 10/07/05
Keyboard	ADM - 2003	Dell: CN-060610-38842-359-8U48 Returned 10/07/05
Mouse	ADM - 2003	Dell: L2F31620390
Lap Top Computer	ADM - 2003	Sony VAIO GRS 7002 Notebook; S# 3002572; Model #: PCG-8K2R (T.Cuabo)

**Miki Leon Guerrero**

CPU	BYRNE 1999	Dell Optiplex GX1P; 8AX35
Keyboard	BYRNE 1999	Microsoft
Monitor	BYRNE 1999	Dell Model No. M770; S# 7221D-DQKF7-A9
Mouse	BYRNE 1999	Microsoft IntelliMouse 1.2A PS/2 Compatible
Speaker	BYRNE 1999	Altec Lansing Speaker System ACS340 with Woofer
UPS	ADM	Blackout Buster Uninterrupted Power Source
Printer	ADM	HP LaserJet 4 Plus; S# USGC44285
Shelf	ADM	Metal Book Shelf w/ Glass, 2 Level
Chair	ADM	Black Executive Chair w/ Arms
Desk	ADM	Brown w/ Brown Top, 7-Drawers
Table	ADM	Brown Folding Table
Chair	ADM	Brown Wooden Chairs w/ Arms @ 4
Chair	PSN	Blue High Back Chair w/ Arms
Telephone	ADM	Meridian Phone with Screen, Beige (475-9663)



Line Conditioner	BYRNE 1999	Tripp-Lite Line Conditioner 1800W 87-140V, S# 9126APOLC368400013 (MLG)
<b>Therese Aguon</b>		
CPU	ADM 2005	Dell CPU; S# 3KV2581
Monitor	ADM 2005	Dell Monitor; S# MY-OW8690-48323-583-1BOA
Keyboard	ADM 2005	Dell Keyboard; S# CN-OW7658-37172-55H-01DX
Mouse	ADM 2005	Dell Mouse; Black; S# 519023556
Speakers	ADM 2005	Dell Subwoofer; Silver/Black; Victory
CPU	LLEBG 2000	Dell Optiplex GX240 Pentium 4 CPU/Minitower; #WGMTP-PXHQ-XJQYT-K82M6-RR84Y
Monitor	LLEBG 2000	Dell UltraSharp 1702FP Flat Panel 17-inch Monitor; S# MX08G1524760529KAALH
Keyboard	LLEBG 2000	Dell PS2 Keyboard; S# TH04N4543717127MB017
Mouse	LLEBG 2000	Dell Microsoft 1.3A PS/2 IntelliMouse; CN 0735HE31032277MJT
Speakers	LLEBG 2000	Harmon/Hardon 395 Speakers w/ Subwoofer; S# CN 7E8406980028U4552 (MISSING, Burglary 01/02/03)
CPU	Y2K	PC Outlet 50X; KZ9721249 <b>Surveyed 01/2005</b>
Mouse	Y2K	Logitech Model M-S48; S# LZA83759884 <b>Survey 01/2005 Storage Room 071205</b>
Speaker	Y2K	4Q Super SubWoofers w/ 4 Q NT Speakers <b>Surveyed 01/2005</b>
UPS	GCMP	Tri Pro Power UPS System; M# POW-550 AS; S# 0436040940
Desk	ADM	Black w/ Brown Top, 7-Drawers
Computer Table	GCMP	Computer Table Wooden Table, Brown w/ pullout shelf
Printer		HP LaserJet5; S# USKC110169
Fax Machine	GCMP	Xerox Document Work Centre Pro 645; S# T2W-071885
Desk	ADM	Black w/ Brown Top, 4-Drawers
Typewriter	ADM	IBM Wheelwriter 1000 by Lexmark; S# 11CCRC9
Table	GCMP	Brown Wooden Typing Table
Table	GCMP	Brown End Table, 2-Drawers
Chair	GCMP	Black w/ Blue Pedestal Chair
Chair	GCMP	Brown w/ Beige Pedestal Chair
Chair	BSP	Brown Wooden Chairs w/ Arms @ 3
Chair	SPG	Brown Chair w/ Blue cushion @ 1 (SPG)
File Cabinet	GCMP	Beige Filing Cabinet, 3-Drawer @ 1
File Cabinet	GCMP	Beige Filing Cabinets, 4-Drawers @ 6
File Cabinet	GCMP	Beige Filing Cabinets, 5-Drawers @ 1
Water Dispenser	GCMP	Electric Hot & Cold Water Dispenser (SUNROC)
Lamp	SPG	Brass Table Lamp with Cream Shade @ 2 (Protocol Office has 1 lamp)
Telephone	GCMP	FTS Phone, Mauve, Touch Button
Telephone	ADM	Meridian Phone with Screen, Beige (475-9662; 472-4201 - 3)

<b>PIP</b>		
CPU	Y2K	PC Outlet 50X
Keyboard	Y2K	Precision; No.9909
Mouse	Y2K	A4 Tech Net Easy 3D Mouse; S# 990860811
Speaker	Y2K	Super Sub-Woofer System 4Q (Y2K)
Keyboard	PIP	Keytronic Keyboard S# J952416931
Mouse	PIP	Microsoft Serial Mouse 2.0A; S# 03907506
Computer Table	Health Planning	Wooden Brown with Black, Computer Table
Keyboard	LLEBG 96	Keytronic S# J981029369
Mouse	LLEBG 96	A4 Tech Net Easy 3D Mouse; S# 990856166
Mouse	COMMERCE	Microsoct IntelliMouse 1.1A PS/2 Compatible; S# 63618-OEM-530427-5
Telephone	ADM	Meridian Phone, Black (475-9661)
<b>WESPAC SECTION</b>		
<b>Peter Leon Guerrero</b>		
Telephone	WESPAC	Southwestern Bell Freedom Cordless Phone; S#: C0163109
Telephone	WESPAC	Meridian Phone, Beige (475-9674)
Chair	ADM	Black Metal Chair (3) (Adm Storage)
Chair	ADM	Brown Metal Chair (1)
Mouse		Microsoft Serial Mouse 2.0A, S# 00693277
Speakers	COMMERCE	Compact Disc Digital Audio Speakers
Typewriter	COMMERCE	IBM LexMark Series II Typewriter
<b>Jimmy Cushing, Jr.</b>		
Cabinet	COMMERCE	Filing Cabinet, 5- Drawers, Beige
Monitor	COMMERCE	Dell Trinitron Monitor, S# MX-083765-47741-15U-202G
Keyboard	COMMERCE	Dell Quiet Key Keyboard, S# TH-0463CD-37177771-14Q-6094
Mouse	COMMERCE	Dell Logitech Mouse, S# LZE11367582
CPU	COMMERCE	Dell OptiPlex GX 200 CPU, S# BGJCP01; CD0001341061
UPS	COMMERCE	APC Back Ups Pro 420, S# FB9734152435
Speakers	COMMERCE	DVEVT Speakers
Printer	COMMERCE	HP Laser Jet 5P, M# C3150A, S# USFB319535
Desk	COMMERCE	Desk, Black with Brown Top, 7-Drawers @ 2
Chair	COMMERCE	Chair, Low Back with Arm Rest, Black @ 2
<b>Next to Jimmy</b>		
Monitor	COMMERCE	Micron Electronics Monitor, S# 2782541
Keyboard	COMMERCE	Micron PC Com Keyboard, M# 5121, S# Q02050687
Mouse	COMMERCE	Microsoft for Micron Mouse
CPU	COMMERCE	Millennia CPU, CD0000831337

Speaker	COMMERCE	Altec Lansing Speaker, ACS21W
Scan Printer	COMMERCE	Scan Printer 15C CD0000831343, S# 0050038-515
UPS	COMMERCE	APC Back Ups Pro 650, S# FB9828675094
Power Source	COMMERCE	1200 VX Uninterrupted Power Source
<b>Emily Taitano</b>		
Desk	COMMERCE	Desk, L-Shape, Black with Brown Top, 4-Drawers
Chair	COMMERCE	Chair, Low Back with Arm Rest, Black
Adding Machine	COMMERCE	Casio - 1212 T Printing Calculator, S# 6517969
UPS	COMMERCE	APC Back Ups Pro 650, S# NB0019361751
Monitor	COMMERCE	Micron Monitor, M# LM-1764, S# 62700CR20169527 A
Keyboard	COMMERCE	Micron Keyboard, S# 22570541
Mouse	COMMERCE	Microsoft Mouse, Port Compatible Mouse 2.0A, S# 1383815
CPU	COMMERCE	Micron Millenia Plus CPU, CD000535512, S# 1672926-0002
Printer	COMMERCE	HP Laser Jet 5P, CD0000159807, M# C3150A, S# USDB016322
Cabinet	COMMERCE	Filing Cabinet, 2-Drawers, Black

### **SOCIO PLANNING**

#### **Millie's (New Work Station from Superior Court)**

CPU	Superior Court	Dell Optiplex GX260T, Minitower Base S# FRF-2D21
Keyboard	Superior Court	Dell PS/2 Keyboard, OptiPlex S# TH-04N454-37171-2CP-A268
Monitor	Superior Court	Dell 17" UltraSharp 1702FP Flat Panel Monitor; S# MX08G152-47605-31K-D399
Mouse	Superior Court	Microsoft PS/2 Intellimouse S# CN-0735HE-31032-2BM-OCOI
UPS	Superior Court	APC SMART UPS 700
Line Conditioner	Superior Court	6-Outlet Line Conditioner, S# 9146APOLC368400101
SmartUps	Superior Court	Smart Ups, 700 Net, S# QS0246121968
SmartPrint	GCMP	SmartPrint Printer Sharing Network; S# 7221905
Speaker	LLEBG	Altec Lansing Speakers; S# ACS3402315
Desk	SOCIO	Black w/ Brown Top, 7-Drawers, Govt # 4010000080
Telephone	SOCIO	Meridian Phone, Beige (475-9674)
Filing Cabinet	COMMERCE	Beige, Filing Cabinet, 2-Drawers,
Filing Cabinet	SOCIO	Grey, Filing Cabinet, 4-Drawers,
Shelf	GOV'T	BookShelf, Gray, 3-Level, Govt# 375-1
Chair	SOCIO	Black Chair w/ Arm Rest
Chair	PSN	Blue High Back Chair w/ Arms
Table	SOCIO	Brown End Table
Table	SPG	Typewriter Table, Brown (SPG)
Line Conditioner	BYRNE 1999	Tripp-Lite Line Conditioner 1800W 87-140V, S# 9126APOLC368400024 (ME)
<b>Lola Leon Guerrero (NEW COMPUTER)</b>		

CPU	BYRNE 2000	Dell Pentium 4; S#:00045-440-326-599
Keyboard	BYRNE 2000	Dell Keyboard; CN06W61038842359A498
Monitor	BYRNE 2000	Dell Monitor; MX07R4774832337G0A99
Mouse	BYRNE 2000	Dell Logitech Mouse; CN0T0943-44753 -363OJ9T
<b>Lola Leon Guerrero (OLD COMPUTER)</b>		
CPU	BYRNE 1999	Dell Optiplex GX240 Pentium 4 CPU/Minitower; #WVC-JYDC8-QHHGC-PHPGR-WQGG3 (MISSING, Burglary 01/02/03)
Keyboard	BYRNE 1999	Dell PS2 Keyboard; S# TH04N4543717128Q8339 (MISSING, Burglary 01/02/03)
Monitor	BYRNE 1999	Dell UltraSharp 1702FP Flat Panel 17-inch Monitor; S# MX08G152476052ANAED3 (MISSING, Burglary 01/02/03)
Mouse	BYRNE 1999	Dell Microsoft 1.3A PS/2 IntelliMouse; CN 0735HE31032277MJT (MISSING, Burglary 01/02/03)
Speaker	BYRNE 1999	Harmon/Hardon 395 Speakers w/ Subwoofer; S# CN 7E840698002970137 (MISSING, Burglary 01/02/03)
Line Conditioner	BYRNE 1999	Tripp-Lite Line Conditioner 1800W 87-140V, S# 9126APOLC368400016 (LLG)
Speaker	BYRNE 1999	Harmon/Hardon 395 Speakers w/ Subwoofer; S# CN 7E840698002970137
Telephone	SOCIO	Meridian Phone, Beige (475-9675)
Desk	SOCIO	Brown w/ Brown Top, 6-Drawers; Model # 31161 (Byrne)
Shelf	SOCIO	Brown Shelf
Table	SOCIO	Brown End Table
Chair	SOCIO	Black w/ Gray Chair w/ arm rest
Chair	PSN	Blue High Back Chair w/ Arms
Filing Cabinet	SOCIO	Gray Filing Cabinet, 2-Drawers, #449-10
Filing Cabinet	BYRNE	Beige Filing Cabinet, 4-Drawers @ 4 (Byrne)
Velobind	BYRNE	GBC Velobind System Three Pro; S# K109669 (Byrne)
Binding Machine	LLEBG	GBC Image Maker 3000 Manual Binder (LLEBG)
Binding Machine	LLEBG	GBC Image Maker 3000 Electric Binder; S# KE06738 (LLEBG)
Water Dispenser	SOCIO	Water Dispenser, Hot & Cold Electric
<b>Ernest Caseres</b>		
CPU	LLEBG 2002	Dell OptiPlex GX270; S# 1SL1351
Keyboard	LLEBG 2002	Model SK-3106; S# CN-0G0842-71616-3C5-3577
Monitor	LLEBG 2002	Model No 1901FP; S# CN-05Y232-71618-45K-AJPE
Mouse	LLEBG 2002	S# LNA41571522
Speaker	LLEBG 2002	Attached to monitor. CN-04Y463-48220-448-00FG
Windows XP	LLEBG 2002	Windows XP Professional Software: Product Key: BPGV6-WFQV4-YCJC2-HD6M6-6476T
Telephone	SOCIO	Meridian Phone, Beige (475-9676)
Desk	SOCIO	Black w/ Brown Top, Govt Tag# 4010000081
Chair	SOCIO	Black and Gray w/ arm rest
Chair	PSN	Blue High Back Chair w/ Arms
Filing Cabinet	SOCIO	Black Filing Cabinet, 2-Drawers @ 2

Filing Cabinet	SOCIO	Beige Filing Cabinet, 4-Drawers
Filing Cabinet	SOCIO	Gray Filing Cabinet, 5-Drawer @ 5
Table	SOCIO	Black and Brown top Monitor Table
Lap Top Computer	BYRNE 1999	Dell Model No.PP01X, Inspiron 18200 Lap Top ComputerCN-04T176-12961-295-2068
Line Conditioner	BYRNE 1999	Tripp-Lite Line Conditioner 1800W 87-140V, S# 9126APOLC368400021 (EC)

### SOCIO-PLANNING PROGRAM

Chair	SOCIO	Black High Back Chair
Table	SPG	Table w/ Wheels
Filing Cabinet	SOCIO	Filing Cabinet, Gray, 2-Drawers
Desk	SPG	Computer Desk w/ Rollers, Oak Color (SPG)
SmartPrint	SOCIO	SmartPrint Printer Sharing Network, S# 6815635
Line Conditioner	BYRNE 1999	Tripp-Lite Line Conditioner 1800W 87-140V, S# 9126APOLC368400022 (EP)
Mouse		MicroSoft IntelliMouse 1.1A PS/2 Compatible; S# 6023244-00000
Printer	BYRNE	HP Color LaserJet 4600dn; S# JPAKF05947
Printer	BYRNE	HP LaserJet 5 Printer; S# USKC110170
Printer	BYRNE	HP Color LaserJet 5; S# JPHF175349
Table	SOCIO	Gray w/ Beige Top
Stabilizer	BYRNE	Line Conditioner/Stabilizer; S# 4990000093
Line Conditioner	BYRNE 1999	Tripp-Lite Line Conditioner 1800W 87-140V, S# 9126APOLC368400023 (Printers)
UPS	BYRNE 1999	APC Smart Ups 700VA, S# SQS0224230309
UPS	BYRNE 1999	APC Smart Ups 700VA, S# SQS0224331366
Multi Media Projector	BYRNE	Proxima Ultra Light X350; S# 1QN2440244

### VEHICLE

Auto	BYRNE	2000 Toyota Camry, Blue/Green, Lic# 3150 (BYRNE) SURVEYED TO GSA
Auto	LLEBG	2005 Nissan Altima, Silver. Lic#4089 (LLEBG)

### COASTAL ZONE MANAGEMENT PROGRAM

#### GCMP SECTION

Printer	GCMP	HP Color LaserJet 5; S# USKC092764 (Colored)
SmartPrint	GCMP	SmartPrint Printer Sharing Network, S# 4516240
Printer	GCMP	HP LaserJet 5; C3961A; S# USK6092760
Printer	GCMP	Laserjet 4M (Plus); S# JPFR006211
SmartPrint	GCMP	SmartPrint Printer Sharing Network, S# 47707129
Line Conditioner	GCMP	Tripp-Lite Line Conditioner 1800W 87-140V, S# 9126APOLC368400011
TV	GCMP	Sony 13" Trinitron color TV; Model KV-13M10; S# 8093669 (With Miki)
TV	GCMP	Toshiba; S# 86851914 (With GCMP)
DVD/VCR Combo	GCMP 2003	DVD/VCR Combo; Model#: PV-D4743S; S#: G31C35047 (02/26/04)
VCR	GCMP	JVC; S# 07340363 (With GCMP)

VCR	GCMP	Royal Video Cassette Player (Beta Star) DVR- 8650P; M# KV-13M10; Gov't Tag# 5060000064 (GCMP)
Stereo Scope	CARTO	Stereo Scope
Multi Media Projector	GCMP	Multi Media Projector
3Com Switch	GCMP 2003	3Com Super Stack3 Switch 4400 24pt/Kit; S#: 0306 7PVV2K8DB2940 Module:7LSV449463
Lap Top Notebook	GCMP 2003	IBM Think Pad R40 Series Notebook; IBM M/T Model: 2682-GLU; S# FX51184
Lap Top AC Adapter	GCMP 2003	IBM AC Adapter; P/N: 08K8204
Lap Top Battery	GCMP 2003	IBM Battery; 11S02K7057Z1Z56B39X0CS
Lap Top CD-RW	GCMP 2003	IBM Thnk Pad CD-RW/DVD-ROM; Part # 22P6991; S# 7876N5W
Lap Top Disk Drive	GCMP 2003	IBM USB Portable Diskette Drive; IBM Part #: 05K9276; S# 23P9OGU

**VEHICLE**

Auto	GCMP	1999 Nissan Pathfinder XE, Red, Lic#2993 (GCMP) Surveyed to GSA/DPW 3/07
------	------	--

**GCMP (Formerly MGawel)**

CPU	GCMP	PIII 32X Max; S# EQ980618250288
Keyboard	GCMP	Microsoft; S# E06401PS2 Storage Room 071205 jn (AN)
Monitor	GCMP	SAMPO Alpha Scan 810; S# T2790750E0317
Mouse	GCMP	Microsoft; S# 05147692
UPS	GCMP	Smart UPS 600 S# S95035767208
Speaker	GCMP	Nimble 280
Printer	GCMP	HP Desk Jet 5550; S#: MY28U1M3F4; Model #: C6487C
Desk	GCMP	Brown Wooden/Metal work desk
Chair	GCMP	Black, with arm-rest (high)
Bookcase	GCMP	1 Wooden - 4 level
Bookcase	GCMP	1 Wooden - 4 level, 2 drawer
Bookcase	GCMP	1 Wooden - 2 level
Bookcase	GCMP	1 wooden 3 level (double sided) w/ rollers (PIP)
Filing Cabinet	GCMP	Beige Metal Filing Cabinet, 5-Drawer @ 1
Filing Cabinet	GCMP	Beige Metal Filing Cabinet, 3-Drawer @ 2
Telephone	GCMP	Meridian Phone, Beige (475-9673)

**Mely DeLeon**

Monitor (New)	GCMP 2004	CN-05Y232-71618-45E-ADCH
Keyboard (New)	GCMP 2004	CN-0J0178-71616-41H-0334
Mouse (New)	GCMP 2004	CN-0D1161-71581-440-0CJG
CPU (New)	GCMP 2004	CC5-X451
Speaker (Old)	GCMP	Nimble Speakers, 2, Beige
Monitor	GCMP 2003	MultiSync, Model: LCD1700V-BK, S# 2X08279GA (Black)
CPU	GCMP 2003	Product Key: GORPQ-2GKMK-XCV3W-VBDF6-2DBKM (Black)

UPS	GCMP	Tri Pro Power UPS System; M# POW-550 AS; S# 0436040750
Keyboard	GCMP 2003	KB-558 (Black)
Mouse	GCMP 2003	S# M00128516 (Black)
Speaker	GCMP 2003	Creative/Black (2) & Base Speakers/Inspire 2.1 Slim 2600
SmartPrint	GCMP	SmartPrint Printer Sharing Network, S# 5817968
SmartPrint	GCMP	SmartPrint Printer Sharing Network, S# 4523597
Desk	GCMP	Wooden 2-Drawer Work Desk
Chair	GCMP	Black, with Arm Rest (high)
Computer Table	GCMP	Brown, Wooden Computer/CPU Side Table
Filing Cabinet	GCMP	Wooden Filing Cabinet, 2-Drawers
Bookcase	GCMP	Wooden, 4-Level
Filing Cabinet	GCMP	Metal Filing Cabinet, 5-Drawer, Beige @ 1
Filing Cabinet	GCMP	Metal Filing Cabinet, 3-Drawer, Beige @ 1
Filing Cabinet	GCMP	Metal Filing Cabinet, 2-Drawer, Beige @ 1
Telephone	GCMP	Meridian Phone, Beige (475-9669)
UPS	GCMP	APC Smart Ups 700VA, S# SQS0225331498
Line Conditioner	GCMP	Tripp-Lite Line Conditioner 1800W 87-140V, S# 9126APOLC368400009
<b>Esther A. Gumataotao</b>		
UPS	GCMP	Tri Pro Power UPS System; M# POW-550 AS; S# 0436040677
<b>GCMP (Formerly FDamian)</b>		
Mouse	GCMP	S# LXB91711616
UPS	GCMP	Smart UPS 600; S# S95056289477
Speaker	GCMP	Juster 3D101
Line Conditioner		Line Stabilizer/Conditioner LC 1800; S# 9126APOL0368400013
Woofers	GCMP	3D Sub-Woofers; Juster Multi Media 3D-10
Printer	GCMP	HP LaserJet5; S# C3961A
CD Writer	GCMP	HP CD-Writer 8200; M# C4489A; S# SG042T1J5T
Desk	GCMP	Wooden; 2-Drawer Work Desk
Chair	GCMP	Black w/ Arm Rest (high)
Filing Cabinet	GCMP	Wooden Filing Cabinet; 2-Drawers
Bookcase	GCMP	BookcaseWooden; 3-Level
Filing Cabinet	GCMP	Metal Filing Cabinet, 5-Drawer, Beige @ 1
Filing Cabinet	GCMP	Metal Filing Cabinet, 5-Drawer, Black @ 1
Filing Cabinet	GCMP	Metal Filing Cabinet, 3-Drawer, Beige @ 2
Telephone	GCMP	Meridian Phone, Beige (475-9665)
<b>Terry Perez</b>		
Monitor (New)	GCMP 2004	CN-05Y232-71618-45K-AHMH

Keyboard (New)	GCMP 2004	CN-0J0178-71616-41H-1799
Mouse (New)	GCMP 2004	CN-0T0943-44753-44S-0JMK
CPU (New)	GCMP 2004	8SL-1351
Speaker (Old)	GCMP	Nimble Speakers, 2, Beige
Monitor	2003 GCMP	MultiSync, Model: LCD1700V-BK, S# 2X08280GA (Black)
CPU	2003 GCMP	Product Key: R946F-8PPW4-J7XCF-X2CV2-RXXP8 (Black)
Keyboard	2003 GCMP	KB-558 (Black)
Mouse	2003 GCMP	S# 0207016167, CE#2002 (Black)
Speaker	2003 GCMP	Creative/Black (2) & Base Speakers/Inspire 2.1 Slim 2600
UPS	GCMP	Tri Pro Power UPS System; M# POW-550 AS; S# 0436040685
UPS	GCMP	Smart UPS 600 APC; S# 594114417417
SmartPrint	GCMP	SmartPrint Printer Sharing Network; S# 5823839
Desk	GCMP	Wooden; 2-Drawer Work Desk
Chair	GCMP	Brown w/ Arm Rest (regular)
Filing Cabinet	GCMP	Wooden Filing Cabinet; 2-Drawers
Bookcase	GCMP	Wooden; 4-Level
Filing Cabinet	GCMP	Metal Filing Cabinet, 5-Drawer, Grey @ 2
Filing Cabinet	GCMP	Metal Filing Cabinet, 5-Drawer, Black @ 3
Telephone	GCMP	Meridian Phone, Beige (475-9664)
UPS	GCMP	
Line Conditioner	GCMP	Tripp-Lite Line Conditioner 1800W 87-140V, S# 9126APOLC368400012
<b>Formerly Annie Flores</b>		
Keyboard	GCMP	Microsoft; S# E06401PS2
Monitor	GCMP	SAMPO, Alpha Scan 810; S#T2790744D0056
Mouse	GCMP	Microsoft; S# 02637547
SmartPrint	GCMP	SmartPrint Printer Sharing Network, S# 4811684
Speaker	GCMP	Nimble 280
Desk	GCMP	Wooden; 2-Drawer Work Desk
Chair	GCMP	Brown, with arm-rest (high) @ 1
Bookcase	GCMP	Wooden Bookshelve; 5-Level
Bookcase	GCMP	Wooden - 4 level
Filing Cabinet	GCMP	Metal Filing Cabinet; 3-Drawer; Beige
Filing Cabinet	GCMP	Wooden Filing Cabinet; 2-Drawers
Filing Cabinet	GCMP	Metal Filing Cabinet; 2-Drawers @ 2
Scanner	SOCIO	HP Scan Jet; M# C2525B; S# 183335
Telephone	GCMP	Meridian Phone, Beige (475-9671) #1
<b>Ray Caseres</b>		



Monitor (New)	GCMP 2004	CN-05Y232-71618-45E-ADSC
Keyboard (New)	GCMP 2004	CN-0J0178-71616-41H-5655
Mouse (New)	GCMP 2004	CN-0D1161-71581-44Q-068E
CPU (New)	GCMP 2004	HC5-5X-451
CPU (Old)	GCMP	Nobilis Pentium II 32X Max;S# E0980618250288 (Mike Ham)
Monitor (Old)	GCMP	13" EPS Technologies Model 1451ES CTX, A90-41707745
Mouse (Old)	GCMP	IBM, M#64550350
Speaker (Old)	BYRNE	Altec lansing 9Z429CHW0210384 (MISSING, Burglary 01/02/03)
Speaker (Old)	GCMP	Nimble Speakers, 2, Beige
Monitor	2003 GCMP	MultiSync, Model: LCD1700V-BK, S# 2X08285GA (Black)
CPU	2003 GCMP	Product Key: J9X6H-3FWRR-2QX7W-4KPHH-DVVXQ (Black)
Keyboard	2003 GCMP	KB-558 (Black)
Mouse	2003 GCMP	S# M00128511 (Black)
Speaker	2003 GCMP	Creative/Black (2) & Base Speakers/Inspire 2.1 Slim 2600
UPS	GCMP	APC-700 (Smart-Ups) WS9729006374
SmartPrint	GCMP	SmartPrint Printer Sharing Network, S# 7708587
Desk	GCMP	Brown Wooden Work Desk
Chair	GCMP	Black, with arm-rest (high) @ 1
Cabinet	GCMP	Wooden Filing Cabinet; 2-Drawers
Telephone	GCMP	Meridian Phone, Beige (475-9670)
<b>Formerly Sonia Shjegstad</b>		
CPU (Old)	GCMP	Energy CPU Hard Drive
Monitor (Old)	GCMP	Magellan 700A Hansol, M# E-17AL, S#B9720001212
Monitor	2003 GCMP	MultiSync, Model: LCD1700V-BK, S# 2X08269GA (Black)
CPU	2003 GCMP	Product Key: FPYMY-RDG4H-68GPB-B3KHG-V8F3G (Black)
Keyboard	2003 GCMP	KB-558 (Black)
Mouse	2003 GCMP	S# M00128410 (Black)
Speaker	2003 GCMP	Creative/Black (2) & Base Speakers/Inspire 2.1 Slim 2600
Telephone	GCMP	Meridian Phone, Beige (475-9665) #2
SmartPrint	GCMP	SmartPrint Printer Sharing Network, S# 4811671
Desk	GCMP	Brown Wooden Work Desk
Chair	GCMP	Brown, No Arm Rest
Telephone	GCMP	Meridian Phone, Beige (475-9665)
UPS	GCMP	APC Smart Ups 700VA, S# SQS0225132198
<b>Planner (Vacant)</b>		
Desk	GCMP	Brown Wooden Work Desk
Chair	GCMP	Brown, No Arm Rest

**LAND USE PLANNING**

**Vangie Lujan**

Monitor	2002 GCMP	Dell by Logitech, S# KR-09J367-47602-28V-ACF2
Line Conditioner	GCMP	Tripp-Lite Line Conditioner 1800W 87-140V, S# 9126APOLC368400010
Keyboard	GCMP	Dell; Blk; S# CN OW7658-37172-613-0424
Mouse	GCMP	Dell; Blk; S# HCJ 60223151
CPU	GCMP	Dell Precision 670; 2LHXQ91
Filing Cabinet	GCMP	Filing Cabinet; 3-Drawer; Beige
Filing Cabinet	GCMP	Filing Cabinet; Wooden; 2-Drawer; Brown
Printer	GCMP	HP LaserJet 5 Printer; Beige; USKCC092743
Line Stabilizer	GCMP	TrippLite; Beige; 72800000281; Model C-1800W
Chair	GCMP	Chair; Metal; Black; no arms
UPS	Y2K	APC Smart UPS 900; S# S95025451973
Speaker	Y2K	Altec Lansing ACS340 8506P; S# 932109CHW0341216
Computer Table	GCMP	Brown Computer Table w/ Pullout Shelf
Desk	GCMP	Brown w/ Brown Top, 7-Drawers
Telephone	GCMP	Meridian Phone with Screen, Beige (475-9672)
Chair	GCMP	Black High Back, Blk Arm, Blk Pedestal
Filing Cabinet	GCMP	Filing Cabinet; Beige; 3-Drawer
Chair	GCMP	Chair; Black no-arm rest; Metal
Filing Cabinet	GCMP	Black Filing Cabinet, Lateral Cabinet with Lift Covers, 4X4, @ 1
CPU	2002 GCMP	Dell , S# FB8B321
Keyboard	2002 GCMP	Dell by Logitech, DS/N: TH-09J788-37171-2AE-1996, S# MCT24201997
Mouse	2002 GCMP	Dell by Logitech, S# LZC23902382
Mouse	GCMP	USB Mouse F8E813-BLK-USB; S# 048000491
Receiver	2002 GCMP	Cordless Mouse and Keyboard Receiver, Dell by Logitech, S#LZB23905387
CPU	Y2K	Dell Optiplex GX1P; Model-MMP; S# H6EZR
Keyboard	Y2K	Microsoft 01V2307
Monitor	Y2K	Dell Trinitron; S# 2910385
Mouse	Y2K	Microsoft IntelliMouse 1.2A PS/2 Compatible
Shelf	GCMP	Brown Shelf with Sliding Door

**Victor Torres**

Monitor	'03 GCMP	Dell Flat Panel, 19 inch Color Monitor; S#: MY-09J367-47603-373-A7Y6
CPU	'03 GCMP	Dell Precision 360 Desktop; S#: 320M831
Keyboard	'03 GCMP	Dell Precision USB Keyboard w/ 8 hotkeys; S# CN-06W610-38842-36A-E925
Mouse	'03 GCMP	Dell Logitech USB Optical Mouse w/ Scroll; S# CN-O4P608-44753-36K-0F5Q

Speaker	'03 GCMP	Altec Lansing ADA215 Multimedia Speaker System; S# CN-RO240-69800-34J-0744
CPU	Y2K	Dell Optiplex GX1P; Model-MMP; S# H6EZQ
Keyboard	Y2K	Acer. M#6511-TW, S# 9166007X419V16028S00000
Monitor	Y2K	Dell Trinitron UltraScan P1110; S# 2910383
UPS	Y2K	APC Smart UPS 1000; S# WS9951007998
Speaker	Y2K	Altec Lansing ACS340 8506P; S# 93109CHW0341213 (MISSING, Burglary 01/02/03)
Desk	GCMP	Black w/ Brown Top, 7-Drawers
Chair	GCMP	Black High Back, Blk Arm, Blk Pedestal
Shelf	GOV'T	Gray Metal Shelf w/ Glass, 2 Levels
Shelf	GCMP	Brown Wooden, 3 shelves
Filing Cabinet	GCMP	Beige Filing Cabinet, 5-Drawers
Computer Table	COMMERCE	Brown Computer Table w/ Pullout Shelf (PLG)
Telephone	GCMP	Meridian Phone, Beige (475-9668)
Line Conditioner	GCMP	Lite Line Conditioner 1800W 87-140V, S# 9126APOLC368400108
Shelf	ADM '05	Metal Storage Cabinet w/ Sliding Glass Doors, Lock&Key, Beige S#LSW1629602
Shelf	ADM '05	Metal Storage Cabinet w/ Sliding Glass Doors, Lock&Key, Beige S#LSW1629600
Shelf	ADM '05	Metal Storage Cabinet w/ Sliding Glass Doors, Lock&Key, Beige S#LSW1629587
Shelf	ADM '05	Metal Storage Cabinet w/ Sliding Glass Doors, Lock&Key, Beige S#LSW1629595
Shelf	ADM '05	Metal Storage Cabinet w/ Sliding Glass Doors, Lock&Key, Beige S#LSW1629588
Shelf	ADM '05	Metal Storage Cabinet w/ Sliding Glass Doors, Lock&Key, Beige S#LSW1629593
Shelf	ADM '05	Metal Storage Cabinet w/ Sliding Glass Doors, Lock&Key, Beige S#LSW1629601
<b>Timothy Semuda</b>		
Chair	GCMP	Brown w/ Arm Rest
Chair	GCMP	Brown w/ Light Brown, no arm rest
Desk	GCMP	Black w/ Brown Top, 7-Drawers
Computer Table	GCMP	Brown Computer Table w/ Pullout Shelf
Filing Cabinet	GCMP	Beige Filing Cabinet, 3-Drawers
Lamp	CARTO	Table Lamp, Gray
Mouse	GCMP	AOpen M# M-542; S# 12B91711662 old mouse; s/n 0144213 new mouse 08/24/05
Keyboard	GCMP	ACER M# 6511-TW; S# 9166007X419V16029S00000
Monitor	GCMP	Likom Technology; M# L7035LD; S# 8CMLC0009891
CPU	GCMP	PIII 450x128-101899-003
Line Conditioner	GCMP	Tripp-Lite Line Conditioner 1800W 87-140V, S# 9126APOLC368400030
Telephone	GCMP	Meridian Phone, Beige (475-9666)
<b>LandUse Program</b>		
Desk	GCMP	Black w/ Brown Top, 7-Drawers (James B.)

Chair	GCMP	Brown w/ Arm Rest (James B.)
Telephone	GCMP	Meridian Phone, Beige (475-9666) #3 (James B.)
Line Conditioner	GCMP	Tripp-Lite Line Conditioner 1800W 87-140V, S# 9126APOLC368400032 (James B.)
Printer	GCMP	HP LaserJet 5; S# USKCS092743
Printer	GCMP	HP DesignJet 650C; S# ESB4607228
Printer	GCMP	LexMark Optra Color 1200; S# 348011502
Desk	GCMP	AutoCad Desk
Mapping Machine	GCMP	DiaZit AF 101, Mapping Machine; Model 6090; S# 180603
Xerox Machine	LEASE (SOCIO)	XEROX Document Centre 265ST; S# 3UP065377
Cabinet	GCMP	Map Cabinet, Horizontal, Beige, Gov't Tag# 4250000359
Cabinet	GCMP	Map Cabinet, Horizontal, Gray, Gov't Tag# 4250000358
Cabinet	GCMP	Map Cabinet, Horizontal, Black, Gov't Tag# 18-E-1070 (10)
Cabinet	GCMP	Map Cabinet, Horizontal, Black, Gov't Tag# 18-E-1070 (11)
Cabinet	GCMP	Map Cabinet, Horizontal, Black, Gov't Tag# 18-E-1070 (12)
Cabinet	GCMP	Map Cabinet, Horizontal, Black, Gov't Tag# 18-E-1070 (13)
Cabinet	GCMP	Map Cabinet, Horizontal, Black, Gov't Tag# 18-E-1070 (22)
Cabinet	GCMP	Map Cabinet, Horizontal, Black, Gov't Tag# 18-E-1070 (23)
Cabinet	GCMP	Map Cabinet, Hanging Type, Gray @ 1
Cabinet	GCMP	Map Cabinet, Hanging Type, Beige @ 2
Projector	COMMERCE	3M Overhead Projector, Black, Model 9000AJK, S# 626848
Visual System	COMMERCE	3M Visual Systems, Black, Model 6100, S# 855 14539
Easel Pads	COMMERCE	Easel Pads, 1 Box of 4 Pads, (50 sheets per pad), 27"x34" White
Easel Stand	COMMERCE	Easel Stand, Boone, Aluminum
<b>TYPE</b>	<b>PROGRAM</b>	<b>DESCRIPTION</b>
Notebook #2	GCMP '02	Dell Notebook, Gray; Model # PP05L; S# CN-OG5152-48643-42L-2035
Adapter	GCMP '02	Dell Adapter 65W-AC; M# HP-OQ065B83; S# CN-ON2765-47890-41P-302530
Mouse	GCMP '02	Dell Mouse; S# CN-OT0943-44753-3BC-OL86
Floppy Drive Module	GCMP '02	Dell Floppy Drive Module; S# PH-02R152-17601-434-D02F
Carry Case	GCMP '02	Dell Nylon Carry Case; Black
Notebook #1	GCMP '04	Dell Notebook, Gray; Model # PP05L; S# CN-OG5152-48643-42P-4478
Adapter	GCMP '04	Dell Adapter 65W-AC; M# HP-OQ065B83; S# CN-ON2765-47890-41P-3030
Mouse	GCMP '04	Dell Mouse; S# LN-A34682520
Floppy Drive Module	GCMP '04	Dell Floppy Drive Module; S# PH-02R152-17601-434-D02F
Carry Case	GCMP '04	Dell Nylon Carry Case; Black

INVENTORY LISTING FOR ELEVEN (11) COMPUTERS  
 LOANED TO DEPT. OF PUBLIC WORKS - ONE STOP CENTER  
 FOR THE  
 2003 AUTOMATED BUILDING PERMITS PROJECT  
 UNDER THE 2003 GCMP GRANT  
 AUGUST 29, 2003

TYPE	PROGRAM	DESCRIPTION
Computer 1 of 11		
Monitor	'03 GIS/GCMP	Dell UltraSharp 1800FP Flat Panel; S#: MX-07R477-48323-37G-OJ74
CPU	'03 GIS/GCMP	Dell OptiPlex GX270T Small Minitower Base; S#: 9G0W831
Keyboard	'03 GIS/GCMP	Dell OptiPlex USB Keyboard; S# CN-06W610-38842-36A-F464
Mouse	'03 GIS/GCMP	Dell Logitech USB Optical Mouse w/ Scroll; S# CN-OTO943-44753-364-OC8T
Speaker	'03 GIS/GCMP	Altec Lansing ADA215 Multimedia Speaker System; S# CN-RO240-69800-34J-0744
Computer 2 of 11		
Monitor	'03 GIS/GCMP	Dell UltraSharp 1800FP Flat Panel; S#: MX-07R477-48323-38D-OOCT
CPU	'03 GIS/GCMP	Dell OptiPlex GX270T Small Minitower Base; S#: FF0W831
Keyboard	'03 GIS/GCMP	Dell OptiPlex USB Keyboard; S# CN-06W610-38842-36A-F479
Mouse	'03 GIS/GCMP	Dell Logitech USB Optical Mouse w/ Scroll; S# CN-OTO943-44753-364-0412
Speaker	'03 GIS/GCMP	Altec Lansing ADA215 Multimedia Speaker System; S# CN-RO240-69800-34J-0739
Computer 3 of 11		
Monitor	'03 GIS/GCMP	Dell UltraSharp 1800FP Flat Panel; S#: MX-07R477-48323-38D-002G
CPU	'03 GIS/GCMP	Dell OptiPlex GX270T Small Minitower Base; S#: JY5W831
Keyboard	'03 GIS/GCMP	Dell OptiPlex USB Keyboard; S# CN-06W610-38842-36A-EP93
Mouse	'03 GIS/GCMP	Dell Logitech USB Optical Mouse w/ Scroll; S# CN-OTO943-44753-364-O8RZ
Speaker	'03 GIS/GCMP	Altec Lansing ADA215 Multimedia Speaker System; S# CN-RO240-69800-34J-0734
Computer 4 of 11		
Monitor	'03 GIS/GCMP	Dell UltraSharp 1800FP Flat Panel; S#: MX-07R477-48323-37G-OJ75
CPU	'03 GIS/GCMP	Dell OptiPlex GX270T Small Minitower Base; S#: JZ5W831
Keyboard	'03 GIS/GCMP	Dell OptiPlex USB Keyboard; S# CN-06W610-38842-36A-F473
Mouse	'03 GIS/GCMP	Dell Logitech USB Optical Mouse w/ Scroll; S# CN-OTO943-44753-364-O7MV
Speaker	'03 GIS/GCMP	Altec Lansing ADA215 Multimedia Speaker System; S# CN-RO240-69800-34J-0745
Computer 5 of 11		

Monitor	'03 GIS/GCMP	Dell UltraSharp 1800FP Flat Panel; S#: MX-07R477-48323-38D-OOCF
CPU	'03 GIS/GCMP	Dell OptiPlex GX270T Small Minitower Base; S#: F25W831
Keyboard	'03 GIS/GCMP	Dell OptiPlex USB Keyboard; S# CN-06W610-38842-36A-FN92
Mouse	'03 GIS/GCMP	Dell Logitech USB Optical Mouse w/ Scroll; S# CN-OTO943-44753-365-O3VM
Speaker	'03 GIS/GCMP	Altec Lansing ADA215 Multimedia Speaker System; S# CN-RO240-69800-34J-0746
Computer 6 of 11		
Monitor	'03 GIS/GCMP	Dell UltraSharp 1800FP Flat Panel; S#: MX-07R477-48323-37G-OJ7A
CPU	'03 GIS/GCMP	Dell OptiPlex GX270T Small Minitower Base; S#: 9Z5W831
Keyboard	'03 GIS/GCMP	Dell OptiPlex USB Keyboard; S# CN-06W610-38842-36A-GX31
Mouse	'03 GIS/GCMP	Dell Logitech USB Optical Mouse w/ Scroll; S# CN-OTO943-44753-364-O8ZW
Speaker	'03 GIS/GCMP	Altec Lansing ADA215 Multimedia Speaker System; S# CN-RO240-69800-34J-0750
Computer 7 of 11		
Monitor	'03 GIS/GCMP	Dell UltraSharp 1800FP Flat Panel; S#: MX-07R477-48323-38D-OOCB
CPU	'03 GIS/GCMP	Dell OptiPlex GX270T Small Minitower Base; S#: 6Z5W831
Keyboard	'03 GIS/GCMP	Dell OptiPlex USB Keyboard; S# CN-06W610-38842-36A-ER05
Mouse	'03 GIS/GCMP	Dell Logitech USB Optical Mouse w/ Scroll; S# CN-OTO943-44753-364-O1FR
Speaker	'03 GIS/GCMP	Altec Lansing ADA215 Multimedia Speaker System; S# CN-RO240-69800-34J-0751
Computer 8 of 11		
Monitor	'03 GIS/GCMP	Dell UltraSharp 1800FP Flat Panel; S#: MX-07R477-48323-37G-OJ6K
CPU	'03 GIS/GCMP	Dell OptiPlex GX270T Small Minitower Base; S#: 1GOW831
Keyboard	'03 GIS/GCMP	Dell OptiPlex USB Keyboard; S# CN-06W610-38842-36A-FD37
Mouse	'03 GIS/GCMP	Dell Logitech USB Optical Mouse w/ Scroll; S# CN-OTO943-44753-364-OASO
Speaker	'03 GIS/GCMP	Altec Lansing ADA215 Multimedia Speaker System; S# CN-RO240-69800-34J-0752
Computer 9 of 11		
Monitor	'03 GIS/GCMP	Dell UltraSharp 1800FP Flat Panel; S#: MX-07R477-48323-37G-OJ6P
CPU	'03 GIS/GCMP	Dell OptiPlex GX270T Small Minitower Base; S#: BF0W831
Keyboard	'03 GIS/GCMP	Dell OptiPlex USB Keyboard; S# CN-06W610-38842-36AF462
Mouse	'03 GIS/GCMP	Dell Logitech USB Optical Mouse w/ Scroll; S# CN-OTO943-44753-364-OCCP
Speaker	'03 GIS/GCMP	Altec Lansing ADA215 Multimedia Speaker System; S# CN-RO240-69800-34J-0758
Computer 10 of 11		
Monitor	'03 GIS/GCMP	Dell UltraSharp 1800FP Flat Panel; S#: MX-07R477-48323-38D-OOCX



**BUREAU OF STATISTICS AND PLANS  
OFFICE FURNITURE AND EQUIPMENT INVENTORY**

**Employee Name:** Lola E. Leon Guerrero

**Date:**

1/19/2012

**Section:** Socio-Economic Planning Program

Item	Make	Model No.	Serial No.	Color	REMARKS
Monitor	Dell Optiplex 780	AX510	CN-0C730C-71623-114	black	2009 ARRA
CPU (Hard Drive)	Dell	DCNE1F	GPPC82S	black	2009 ARRA
Keyboard	Dell	SK-8116	E145614	black	2009 ARRA
Mouse	Dell	MS111-P	O P.P.D. CN-91123V-71581-11S-115A	black	2009 ARRA
Speaker	Dell	AX510		black	2009 ARRA
2 TB External Hard Drive	Immega	XTA10206B9		black	2009 ARRA
External Hard Drive	Hornerter	HD0308U2S	ATC0811002841	black	2009 ARRA
UPS (Battery Back-Up)	APC1000	BX1000	QB0427235088	black	Westpac Fin
Line conditioner	Tripp Lite	LC3684	9126APOLC368400016	Beige	Westpac Fin
Printer				Beige	1999 Byrne
Calculating Machine					
Telephone	ASTRA	Model 480			
Desk	Ming Yih	MY CD-3DA/BK	IC: 1884A-480E	black	2010 Census0536
Chair	HON (mid back)		110315	black/brown	2009 ARRA
Lateral 4 drawer Filing Cabinet	Global Wesko	Key No. W505	CGGRP/7808BP	fabric green	2004 PSN
Stand up 4 drawer filing Cabinet	SUAN Ho	Key No. C744		Beige	Byrne
Stand up 4 drawer filing Cabinet	SUAN Ho	Key No. 738		Beige	Byrne
Other(s):					
Stand up 5 Storage cabinet with glass front					
End Table		Key No. 137		Beige	Local Funds
Credenza 4 pedestal				Brown	
Multi media projector	Proxima Ultra Light	X350	S#1 QN2440244	Brown	
Laptop w/ accessories	Dell Latitude	E6420	B5BK3R1	black	1999 Byrne
				black	Loaned to Michael Cruz (IT representative)

The office furniture/equipment listed above is/are assigned to the above-mentioned employee. Should any furniture and/or equipment require to be surveyed, transferred, or if an employee separates from the Division/Department, the employee should notify admin section for proper action and reporting. The employee is responsible to report to administration section/Bureau of Statistics and Plans and their immediate supervisor any loss or damages to any of the furniture/equipment for immediate action.

Employee Signature

Date



**BUREAU OF STATISTICS AND PLANS  
OFFICE FURNITURE AND EQUIPMENT INVENTORY**

Employee Name:

Ernest E. Caseres

Date:

1/20/2012

Section: **Socio-Economic Planning Program**

Item	Make	Model No.	Serial No.	Color	REMARKS
Monitor #1	Dell	E1910c, 19 inch	CN-0U274R-64180-07C-0LXM	blk	2009 ARRA JAG
CPU (Hard Drive) #1	Dell	Optiplex 380	4YN8726	blk	2009 ARRA JAG
Keyboard #1	Dell	KB1421	J11028TM	blk	2009 ARRA JAG
Mouse #1	Dell	MS111-P	CN-01103V-71581-096-1LAN	blk	2009 ARRA JAG
Computer speakers #1	Dell	AX210	CN-0R128K-48220-08C-029R	blk	2009 ARRA JAG
UPS (Battery Back-Up)	APC Smart-UPS	7DL700	Q502482202370	blk	2009 ARRA JAG
Printer	HP PhotoSmart 25	SDGOB-0504	MY66L1121W Q7211L	blk	printer/scanner/copier
Telephone	AASTRA	480e	IC1884A-480E	gray/silver	2010 Census-0515
Desk	HON	*****	MY-CD-3D/ABK 110315	blk	2009 ARRA JAG 3
Chair	HON	*****	CKQRPCT78088BP/72T	blk/brown top	mid-back w/arm rest
Filing Cabinet	*****	*****	*****	blk/blue green	2-drawer
External Zip Drive	Iomega	Zip 250	1GBR02919H	blk	*****
Monitor #2	Dell	1905FP	CN-0R9239-48220-559-014L	blue	*****
CPU (Hard Drive) #2	Dell	DHM Optiplex GX280	7XYGV71	blk	*****
Keyboard #2	Dell	SK-8115	CN-0L4628-71616-55E-0PTB	blk	PO56A05963
Mouse #2	Dell	M-UVDEL1	LNA41571522	blk	PO56A05963 / E145614
Computer speakers #2	Dell	AS500	CN-0R9239-48220-559-014L	blk	PO56A05963
Line Conditioner #1	Tripp-Lite	LC1800	9146APOLC368400085	blk	PO56A05963
Line Conditioner #2	Tripp-Lite	LC1800	9550AYOLC614800059	white	*****
External Hard Drive	Hometek	HD308U2S	ATQ0811002844	blk	PO76A05235 (in box)
External Hard Drive	My Passport	*****	WXE1E1HLM45	blk	*****
				silver	*****

The office furniture/equipment listed above is/are assigned to the above-mentioned employee. Should any furniture and/or equipment require to be surveyed, transferred, or if an employee separates from the Division/Department, the employee should notify admin section for proper action and reporting. The employee is responsible to report to administration section/Bureau of Statistics and Plans and their immediate supervisor any loss or damages to any of the furniture/equipment for immediate action.

**BUREAU OF STATISTICS AND PLANS  
OFFICE FURNITURE AND EQUIPMENT SURVEY**

**Employee Name:** MILDRED B. ERGUIZA  
**Section:** SOCIO-ECONOMIC PLANNING PROGRAM

**Date:** January 20, 2012

Item	Make	Model No.	Serial No.	Color	Remarks
Monitor (17")	Dell	E1910c	CNU0274R6418007COM1M	Black	2009 JAG ARRA
Speakers	Dell	AX210	CNDR126K4822008C029U	Black	2009 JAG ARRA
Keyboard	Dell	KB1421	J11026A6	Black	2009 JAG ARRA
Mouse	Dell	MS111P	CN011D3V7158109D082N	Black	2009 JAG ARRA
CPU (Hard Drive)	Dell	Optiplex 360	Product Key: CVPPRR7CMLJK9YFCXMQCQH28 / Service Tag: 5YN872S	Black	2009 JAG ARRA
UPS (Battery Back-Up)	APC	DL1000VNT	JB0633013783	Black	PSN 2004 Grant Program
Line Conditioner	Tripp-Lite	LC3684	9126AP0LC368400024	White	Byrne 1999 Grant Program
UPS/Line Conditioner	Tripp-Lite	SMART1000LCD	97388YOSM678900980	Black	Byrne Grant
Telephone	Aastra Model E 480	IC: 1884A-48QE	2010 Census - 0524	Black	Tel Number 475-9674
Desk	HON (Mid Back)	MV-CD-3D/MBK	II0315	Brown/Black	2009 ARRA JAG 7 Drawer Desk
Chair	N/A	N/A	CEORPC/7808BP/72T	Fabric/Green	PSN 2004 Grant Program
Book Shelf	N/A	N/A	Govt Tag: 375-1	Grey	Metal/3 Shelves/Glass Door Panel
Typewriter Desk	N/A	N/A	N/A	Brown	South Pacific Games Office Inventory
Laptop	Dell	PP18L / LBL P/N: RF621 A02	Service Tag: 2U8ZZC1 Code: 5517537697	Black/Grey	PSN 2004 Grant Program
Multi-Media Projector	Dell	3400MP	CN-0M8591-S0081-744-0568 Service Tag: 4JNH4C1 Express Service Code: 9895416625	Black/Grey	PSN 2004 Grant Program
ZIP Drive - External	Jomega	Z250USBP/CMBP	1GBS02500X	Blue	PSN 2004 Grant Program
External Hard Drive	Homelitek	HD308U2S	AT00811002825	Black	Byrne JAG Grant Program
2-Drawer Filing Cabinet	Letter Size	N/A	N/A	Brown	Pressboard File Drawer (from Pete L.G.)
4-Drawer Filing Cabinet	Legal Size	DSK Key No.: 260	N/A	Beige	Byrne Grant
4-Drawer Filing Cabinet	Legal Size	DSK Key No.: 149	N/A	Beige	Byrne Grant
4-Drawer Filing Cabinet	Legal Size	Key No.: 171	N/A	Light Grey	2010 Census-0765

The office furniture/equipment listed above is/are assigned to the above-mentioned employee. Should any furniture and/or equipment require to be surveyed, transferred, or if an employee separates from the Division/Department, the employee should notify admin section for proper action and reporting. The employee is responsible to report to administration section/Bureau of Statistics and Plans and their immediate supervisor any loss or damages to any of the furniture/equipment for immediate action.

**BUREAU OF STATISTICS AND PLANS  
OFFICE FURNITURE AND EQUIPMENT INVENTORY**

Employee Name: Conference Room

Date: 1/19/2012

Section: Socio-Economic Planning Program

Item	Make	Model No.	Serial No.	Color	REMARKS
Filing Cabinet - 2 Drawer					
Lateral Filing Cabinet - 4 Drawer	HON	Key No. 0008		Beige	
Lateral Filing Cabinet - 4 Drawer	HON	Key No. 105E		Beige	
Lateral Filing Cabinet - 4 Drawer	HON	Key No. 107E		Beige	
Lateral Filing Cabinet - 4 Drawer	HON	Key No. 129 E		Beige	
Lateral Filing Cabinet - 4 Drawer	HON	Key No. 102 A		Beige	
Printer	HP	LaserJet P2015dn	2015dn	Beige	
Hard drive	Dell	Optiplex 380	CN-0P9242F1 51N872E	black	
Monitor	Dell		CN-0CC299-64180-65F-128L	black	
Speaker	Dell	DP/NOR128K	CN-OR12CK-48220-08C-029V	black	W/SPEAKERS
Mouse	Dell		CN-011D3V-71581-096-16G5	black	
Keyboard	Dell		J1101D1VH	black	
Computer desk/cart				black/wood trim	
External Hard drive	Mad dog multimedia				
External Speaker	Dell		CN-OT1760-71623-66F-1360		USB 2.0
Line conditioner	Hydrite	LC1800	LC3681	BEIGE	2001 JDC
UPS	tripplite		9745DYO8C575800321		Internet Office
Table					
Chair-1	Kokuyo			black frame/brown top	
Chair-2	Kokuyo			black chrome frame	
Chair-3	Kokuyo			black chrome frame	
Chair-4	Kokuyo			black chrome frame	
Fabric Chair -1				black chrome frame	
Fabric Chair -2			1320	fabric	2010 Census - Socio
Fabric Chair -3			645	fabric	2010 Census - Socio
Fabric Chair -4			1317	fabric	2010 Census
Fabric Chair -5			1314	fabric	2010 Census
Fabric Chair -6			667	fabric	2010 Census
Fabric Chair -7			656	fabric	2010 Census
Fabric Chair -8			652	fabric	2010 Census
Fabric Chair -9			661	fabric	2010 Census
Fabric Chair -10			1311	fabric	2010 Census
Arm Chair 1 - vinyl			643	fabric	2010 Census
Arm Chair 2 - vinyl				brown/wood	Socio
Multimedia projector	Texas Instrument		BFUM10304917	brown/wood	Socio - Director's Office
Laptop with bag	Dell		B23W1C1	black	EDA CEDS (in file cabinet)
External Hard drive - 2TB	ICOMEGA		XTA10206E7	black	EDA CEDS (in file cabinet)
DVD Video Player	Toshiba	SD590KA	SN 5B19303152 / 231	black	ARRA JAG (in file cabinet)
Flatscreen TV	JVC	MN/NT-42P3002BA	SN 16413410	black	2010 Census
Laminator	Fellow Venus 125		VENUS 125100509VC0015700	black	2010 Census

The office furniture/equipment listed above is/are assigned to the above-mentioned employee. Should any furniture and/or equipment require to be surveyed, transferred, or if an employee separates from the Division/Department, the employee should notify admin section for proper action and reporting. The employee is responsible to report to administration section/Bureau of Statistics and Plans and their immediate supervisor any loss or damages to any of the furniture/equipment for immediate action.





**BUREAU OF STATISTICS AND PLANS  
OFFICE FURNITURE AND EQUIPMENT INVENTORY**

**Employee Name: Director's Office**

**Section: BSP Administration**

**Date: January 20, 2012**

Item	Make	Model No.	Serial No.	Color	REMARKS
Monitor					
CPU (Hard Drive)					
Keyboard					
Mouse					
UPS (Battery Back-Up)	Maruson Ups	PRO-1100USA	*616B02195	Black	ADM
Printer	HP Photo Smart Printer	All in one Printer	S# C005R181TN	Black	CENSUS 2010 P106A05700 Advance PC Guam
Calculating Machine					
Telephone	AASTA	480 e			
Desk	Wooden	L Shape	D61307801361	Black	CENSUS 2010
Chair	5 Pedestal	Executive Leather		Dark Brown	7 Drawer w/ lock
Filing Cabinet	Metal	Lateral Filing		Black	High Back w/arm
Oval Shape Table with Lock	Wooden	Cabinet with lock		Beige	4 Drawer
Chair	Wooden	Cushion		Brown Top	CENSUS 2010
Chair	Wooden	Cushion		Brown	w/ arm
Chair	Wooden	Cushion		Brown	w/ arm
Chair	Wooden	Cushion		Brown	w/ arm
Chair	Wooden	Cushion		Brown	w/ arm
Chair	Wooden	Cushion		Brown	w/ arm
2005 Nissan Altima 4 Dr Sedan	Nissan	Altima	VIN#1N4AL11D65C223772	Silver	w/ arm (SOCIO ECONOMIC OWNER)
2006 Nissan PathFinder Wagon	Nissan	PathFinder	VIN#5N1AR18W46C616019	Maroon	LP # 4089 LP # 4503

*The office furniture/equipment listed above is/are assigned to the above-mentioned employee. Should any furniture and/or equipment require to be surveyed, transferred, or if an employee separates from the Division/Department, the employee should notify admin section for proper action and reporting. The employee is responsible to report to administration section/Bureau of Statistics and Plans and their immediate supervisor any loss or damages to any of the furniture/equipment for immediate action.*

**BUREAU OF STATISTICS AND PLANS  
OFFICE FURNITURE AND EQUIPMENT SURVEY**

Employee Name: Julie Nededog

Date: January 20, 2012

Section: Administration, Bureau of Statistics and Plans

Item	Make	Model No.	Serial No.	Color	REMARKS
Monitor #1	Dell	Ultra Sharp Flat 19 inch	CN-OCC299-64180-64E-OHIS	Black	Adjustable Height w/speakers
CPU (Hard Drive) #1	Dell	OptiPlex GX620	9C&P7B1	Black	W/ DVD Reader Drive
Keyboard #1	Dell	R17D60	CN-O1T6867-37172-63-G-01W1	Black	
Mouse #1	Dell	M056UOA	F0100FY0	Black	
UPS (Battery Back-Up)	OCM Power Com	BNT-1500AP	40266441004	Black	
Printer					
Calculating Machine					
Telephone	Aastra Black	480 e	F262248000257		
Desk - 7 Drawers, Metal	Ming Yih	MY CD-3DABK Key#	110315	Black/Brn	CENSUS 2010
Chair #1 High Back w/arms	High Back Cushion	5 Pedestal Blk Cushion	Adjustable	Black	CENSUS 2010 #384/033
Chair #2 High Back w/arms	High Back Cushion	5 Pedestal Blk Cushion	Adjustable	Black	CENSUS 2010
Filing Cabinet	Itoki		G6590	Black	CENSUS 2010
Filing Cabinet	Australia		R238	Grey	4 Drawer w/lock #G590
Filing Cabinet	China		1010	Belge	4 Drawer w/lock #R238
Filing Cabinet	China		1004	Belge	4 Drawer w/lock #1010
Typewriter Stand	Wooden		Brown with wheels	Belge	2 Drawer w/lock #1004
Typewriter	IBM	Single Shelf	11-RM276	Brown	With Wheels and shelf
Monitor #2	Dell	WhealWriter 60 Series II	CN-03178RO-74445-08L-164L	Belge	With Screen
Monitor #3	Dell	Wide Screen 22 inch	CN-03178RO-74445-08L-156L	Black	PIP
CPU (Hard Drive) #2	Dell	Wide Screen 22 inch	CN-03178RO-74445-08L-156L	Black	PIP
Keyboard #2	Dell	Opti-Plex 780	119Q62S	Grey	w/cd Rewritable and DVD
Mouse #2	Dell	KB1421	JON03954	Black	
Computer Table	Dell	MS111-P	CN-011D3V-71581-085-0XF2	Black	
	Metal			Grey	w/ two shelves

The office furniture/equipment listed above is/are assigned to the above-mentioned employee. Should any furniture and/or equipment require to be surveyed, transferred, or if an employee separates from the Division/Department, the employee should notify admin section for proper action and reporting. The employee is responsible to report to administration section/Bureau of Statistics and Plans and their immediate supervisor any loss or damages to any of the furniture/equipment for immediate action.





**BUREAU OF STATISTICS AND PLANS  
OFFICE FURNITURE AND EQUIPMENT INVENTORY**

Employee Name: Heather Perez

Date: \_\_\_\_\_

Section: Business and Economic Statistics Program

Item	Make	Model No.	Serial No.	Color	REMARKS
Monitor	Dell				
CPU (Hard Drive)	Dell		CN-OG327H-74261-06L-08CL	Black	CENSUS 2010
Keyboard	Dell		DBK062S	Black	CENSUS 2010
Mouse	Dell			Black	CENSUS 2010
UPS (Battery Back-Up)				Black	CENSUS 2010
Calculating Machine					
Telephone	AASTRA		480 e	Black	
Desk - 7 Drawers, Metal	Ming Yih		MY CD-3D/MBK Key#	Black/Bm	CENSUS 2010
Chair High Back	5 Pedestal		110315	Black	CENSUS 2010 # High Back w/arm

The office furniture/equipment listed above is/are assigned to the above-mentioned employee. Should any furniture and/or equipment require to be surveyed, transferred, or if an employee separates from the Division/Department, the employee should notify admin section for proper action and reporting. The employee is responsible to report to administration section/Bureau of Statistics and Plans and their immediate supervisor any loss or damages to any of the furniture/equipment for immediate action.



**BUREAU OF STATISTICS AND PLANS  
OFFICE FURNITURE AND EQUIPMENT INVENTORY**

Employee Name: Antonette Pitter

Date:

Section: Business and Economic Statistics Program

Item	Make	Model No.	Serial No.	Color	REMARKS
Monitor	Dell	AX510	CN-0G327H-74261-06L-08DL	Black	Census 2010
CPU (Hard Drive)	Dell	DCC1YF	GBKD62S	Black	Census 2010
Keyboard	Dell	KB1421	JOUO10B2	Black	Census 2010
Mouse	Dell	MS111-P	CN01103V-71581-075-3X16	Black	Census 2010
UPS (Battery Back-Up)	Ecum	KNR	M21101763	Black	Census 2010
Printer	HP Color LaserJet	2605dn	CNLTC76S1BC	Black	Census 2010
Calculating Machine	Canon	MP21DX		Grey	Census 2010
Telephone	AASTRA	480e		White	
Desk	7-Drawer			Black	Census 2010
Chair	5-P Pedestal			Black	Census 2010-0042
Filing Cabinet	2-Drawer			Black	Census 2010
Filing Cabinet	4-Drawer			Beige	Census 2010
				Beige	Census 2010

The office furniture/equipment listed above is/are assigned to the above-mentioned employee. Should any furniture and/or equipment require to be surveyed, transferred, or if an employee separates from the Division/Department, the employee should notify admin section for proper action and reporting. The employee is responsible to report to administration section/Bureau of Statistics and Plans and their immediate supervisor any loss or damages to any of the furniture/equipment for immediate action.













**BUREAU OF STATISTICS AND PLANS  
OFFICE FURNITURE AND EQUIPMENT INVENTORY**

Employee Name:

Emily Taitano

Date:

8-Jan-13

Section:

PIP/Fisheries

Item	Make	Model No.	Serial No.	Color	REMARKS
Monitor #1	Dell		CN-0G337R-64180-05B-0CL5	Black	
CPU (Hard Drive) #1	Dell		Service Tag: 36P362S; Express Service Code: 6935282308	Black	
Keyboard #1	Dell		MY-0T347F-71619-072-0871	Black	
Mouse #1	Dell		423145129	Black	
UPS (Battery Back-Up) #1	APC			White/Gray	
Printer	HP LaserJet 5P		USD8016922	Grey	
Calculating Machine	Sharp		3D36081Y	White	
Telephone	Aastra		F26513101699	Black	
Desk #1			110315 T6-423/047	Blk/Brn Top	
Chair				Black	7 drawers, metal 2009 ARRA JAG 5
Laptop	Dell Latitude		E5510	Grey	
External Hard Drive	Thermalake		SilverRiver 5.25"	Silver	
External Hard Drive	Thermalake		SilverRiver 5.25"	Silver	
Shredder	Fellowes		S8-99CI	Black/Grey	
Filing Cabinet			T6-069	Beige	5 drawer
Filing Cabinet	DSK		T6-073	Beige	5 drawer
Monitor #2	Dell		A239	Beige	2 drawer
CPU (Hard Drive) #2	Micron Millennia		CN-05Y232-71618-47D-A752	Black	
Keyboard #2	Dell		2348445-0001	Beige	
Mouse #2	Dell		CN-0J4624-37172-467-03M9	Black	
Scanner	Fujitsu		424050126	Black	
Scanner #2	Fujitsu		006-0038-S15	Beige	
Printer #2	HP LaserJet 5P		0050039-S15	Beige	
Computer Desk	APC		USFB319535	Grey	needs to be serviced
UPS (Battery Back-Up) #2	Sanyo		Back-Ups XS 1000	Beige w/grey top	
Standard Cassette Dictating/Transcribing System	Dell		TRC-8900	White/Gray	
Keyboard #3	Dell		P3Y36332 G	black	
Keyboard #4	Smart Keyboard		CN-0J4624-37172-467-01KP	Black	
Supply Cabinet			LT-KW 300	Black	
Desk #2			102	Beige	
				Blk/Brn Top	7 Drawers, metal

The office furniture/equipment listed above is/are assigned to the above-mentioned employee. Should any furniture and/or equipment require to be surveyed, transferred, or if an employee separates from the Division/Department, the employee should notify admin section for proper action and reporting. The employee is responsible to report to administration section/Bureau of Statistics and Plans and their immediate supervisor any loss or damages to any of the furniture/equipment for immediate action.

Employee Signature

Date

4-Jan-12

**BUREAU OF STATISTICS AND PLANS  
OFFICE FURNITURE AND EQUIPMENT INVENTORY**

Employee Name: Monica Guerrero

Date: 8-Jan-13

Section: Planning Information Program

Item	Make	Model No.	Serial No.	Color	REMARKS
Monitor #1	Dell		CN-065P51-74445-07L-AFEL	BLACK	Census
CPU (Hard Drive) #1	Dell	DCNEIF	BP59728	BLACK	Census
Keyboard	Dell		CN-0DUJ31-71616-08A-0D26	BLACK	Census
Mouse	Dell		CN-011D3V-71581-096-1J03	BLACK	Census
Monitor #2	Dell		CN-065P51-74445-07L-AGUL	BLACK	Census
Speakers	Dell		CN-0C730C-71623-098-1206	BLACK	Census
Desk, 7-drawer					
File cabinet, 2-drawer				Black	with brown top Census
UPS (Battery Back-Up)	APC Back-UPS	BR1500L	3B0942X33029	Black	09/1/10 2010 Census - 506
Telephone	ATT				
File Cabinet, 4-drawer			DS10275772	White	2010 Census - 1427
File Cabinet, 4-drawer				152 Gray	2010 Census - 0766
File Cabinet, 4-drawer lateral	Global			171 Gray	2010 Census - 0768
File Cabinet, 3-drawer lateral				W455 Black	2010 Census
File Cabinet, 3-drawer lateral				392 Black	2010 Census
File Cabinet, 3-drawer lateral				W507 Beige	2010 Census

Employee Name:

Monica J. Guerrero

Section:

Fisheries

Date:

8-Jan-13

Item	Make	Model No.	Serial No.	Color	REMARKS
Dell Flat Panel Monitor	Dell	E2210H	CN-06337R-64180-05B-0D3S	Black	DP/N: 06337R
Dell Flat Panel Monitor Base	Dell	Base for E2210H	FFQ00000006A37G01181-104	Black	Base for E2210H
Dell CPU (Hard Drive)	Dell	OptiPlex 960	Service Tag 46P362S	Black	Express Code 911206464
Dell Keyboard	Dell	0T347F	0T347F-71619-072-0729-A01	Black	
Dell USB Mouse	Dell	0XN967	J0M04GB1	Black	
Dell Speaker	Dell		34030139258	Black	
UPS (Battery Back-Up)		BNT-1500AP	40286371003	Black	W/N: 11019501
UPS (Battery Back-Up)		BNT-1500AP	40385471004	Black	W/N: 11020165
UPS (Battery Back-Up)		BNT-1500AP	40286311003	Black	W/N: 11019801 / Monica
Chair, executive w/arm rest	Global			Black	Executive, fishnet back
File Cabinet, 4-drawer lateral	Global			Beige	2007-2009 IFA
Hover 3.5" SATA to USB Enclosure	Hornetrek	HD308U2S	ATQ0811002852	Black	2007 Byrne-JAG
File Cabinet, 2-drawer lateral	HON			Beige	

The office furniture/equipment listed above is/are assigned to the above-mentioned employee. Should any furniture and/or equipment require to be surveyed, transferred, or if an employee separates from the Division/Department, the employee should notify admin section for proper action and reporting. The employee is responsible to report to administration section/Bureau of Statistics and Plans and their immediate supervisor any loss or damages to any of the furniture/equipment for immediate action.

Employee Signature

Date

WPacFIN  
 FFQ00000006A37G01181-1058014771-A  
 CN-05120P-742100317-1EMF-A05  
 CN-05120P-742100317-1VK-A05  
 CN-0XN967-71581-05R-0B2Y

IFA - P106A05146  
 IFA - P106A05147  
 IFA - P106A05148

WPacFIN

P096A05541

**BUREAU OF STATISTICS AND PLANS  
OFFICE FURNITURE AND EQUIPMENT SURVEY**

Employee Name: \_\_\_\_\_ Planning Information Program \_\_\_\_\_ Date: \_\_\_\_\_ 8-Jan-13

Section: \_\_\_\_\_ Planning Information Program \_\_\_\_\_

Item	Make	Model No.	Serial No.	Color	REMARKS
Executive Chair	Executive fishnet back	HS-804/805/506	(none)		Library Research Desk
Lamination	Fellows	V125	(none)		
Paper cutter	X-Acto Heavy Duty	26364	(none)	Beige	24-inch Paper Trimmer
Paper cutter	X-Acto Heavy Duty	26355	(none)	Beige	15-inch Paper Trimmer
Projection Screen	ADSON	5417-1032 (?)		Black	2010 Census - 0327
Projector	ViewSonic PJD5112	VS12618	RLP1026319999	Black	SVGA DLP Projector
Projector Remote Control	ViewSonic			Silver/black	ViewSonic Projector
Projector Video Cable	ViewSonic	J2552-0072-03		Black	ViewSonic Projector
Projector Power Cord	ViewSonic	J2552-0109-00		Black	ViewSonic Projector
Surge Protector	Belkin	AS10301		Black	ViewSonic Projector

**BUREAU OF STATISTICS AND PLANS  
OFFICE FURNITURE AND EQUIPMENT INVENTORY**

Employee Name: Janet Quitugua

Date: 8-Jan-13

Section: Planning Information Program

Item	Make	Model No.	Serial No.	Color	REMARKS
Monitor #1	Dell		CN-065P51-74445-07L-AGKL	BLACK	Census
CPU (Hard Drive)	Dell	DCNE1F	CP5Q728	BLACK	Census
Keyboard	Dell		CN-0DJ331-71616-08A-0D1D	BLACK	Census
Mouse	Dell		CN-011D3V-71581-09R-1J7X	BLACK	Census
Monitor #2	Dell		CN-065P51-74445-07L-AGHL	BLACK	Census
Speakers	Dell		CN-0C730C-71623-098-1215	BLACK	Census
UPS BNT-1500 AP		AC110-120 Volt	SN 40266311003	BLACK	Census
Desk	INB		4010000083	BLACK	7 Drawer
Chair, Executive w/Arm rest				Blk/BRN	
Filing Cabinet				Black	WPACFIN
Filing Cabinet			AM416	GRAY	5 Drawer
File Cabinet, 4-drawer lateral	Global		1001	BLACK	2 Drawer
External Hard Drive	HomeTek (SATA to USB)	UD308U2S		Black	
Telephone Instrument	AT&T	950	2010 Census 1426	BLACK	
Hampton Bay Desk Lamp			2010 Census 1365	WHITE	
Zip Drive	Omega	250 USB Powered	1GHR12984T	SLV/BLK	
				BLUE/BLK	

The office furniture/equipment listed above is/are assigned to the above-mentioned employee. Should any furniture and/or equipment require to be surveyed, transferred, or if an employee separates from the Division/Department, the employee should notify admin section for proper action and reporting. The furniture/equipment for immediate action.

Employee Signature \_\_\_\_\_

Date \_\_\_\_\_

4-Jan-12

OFFICE FURNITURE AND EQUIPMENT INVENTORY

Employee Name: Calvin Saruwatari

Date: 8-Jan-13

Section: Planning Information Program

Item	Make	Model No.	Serial No.	Color	REMARKS
Dell Flat Panel Monitor #1	Dell	P2011H1	CN-065P51-7445-07L-AJDL	Black	2010 Census
Dell CPU (Hard Drive)	Dell Optiplex 780	DCNE1F	DP6Q9728	Black	2010 Census
Dell Keyboard	Dell	SK-8115	CN-0DDJ331-71616-08A-0D10	Black	2010 Census
Dell USB Mouse	Dell	MS119	CN-011D3V-71581-09R-1J0B	Black	2010 Census
Dell Flat Panel Monitor #2	Dell	P2011H1	CN-065P51-74445-07L-A16L	Black	2010 Census
Dell Speaker	Dell	AX510	CN-0QC730C-71623-098-1211	Black	2010 Census
<b>Marvell's Computer</b>					
Dell Flat Panel Monitor	Dell	1907FPV	CN-OCC388-71618-77B-ABF7	Black	
Dell CPU (Hard Drive)	Dell Optiplex	Optiplex 745	610TCD1	Black	
Dell Keyboard	Dell	R17D60	CN-0UJW991-37172-768-02KS	Black	
Dell Speaker	Dell	AX510	CN-0UH837-48220-769-0162	Black	
Dell Flat Panel Monitor	Dell	1901FP	CN-05Y232-71618-45E-AD57	Black	
Dell CPU (Hard Drive)	Dell	Optiplex GX270	3G6H431	Black	Former Library computer
Dell Keyboard	Dell	SK-3106	CN-0G0842-71616-41H-5652	Black	Former Library computer
Dell Speaker	Dell	AS500	CN-04Y463-48220-448-00TV	Black	Former Library computer
Dell USB Mouse	Dell	MO56UO	413020239	Black	Unknown
<b>File Cabinet, 4-drawer</b>					
Chair, executive w/arm rest	Willkurs		1611	Grey	2010 Census - 1204
Telephone	ATT		DS102659683	Black	High-back
File Cabinet, 3-drawer lateral				White	2010 Census - 1433
				Black	2010 Census
<b>Chair, executive w/arm rest</b>					
Dell USB Mouse	HON	MOC6UO		Grey	Mkt's
Dell Flat Panel Monitor	Dell	1901FP	J0A010TS	Black	2010 Census - 1408
Dell Keyboard	Dell	SK-3106	CN-05Y232-71618-45E-ADS6	Black	
Dell USB Mouse	Dell	MO56UO	CN-0G0842-71616-41H-5654	Black	with card reader
Dell Speaker	Dell	AS500	413020239	Black	optical mouse
Line Conditioner	TriLite LC1800	LC3684	CN-04Y463-48220-448-01LN	Black	
USB Zip Drive	Imomega Zip 250	Z250US8PCWBC	9126APOLC368400031	Belge	
Desk, 6-drawer			1G1R12829H	Blue	
UPS (Battery Back-up)	Marusan UPS System	PRO-850USA	516300539	Grey	with white top
External Hard Drive	HomeTek (SATA to USB)	UD308U2S	ATC00811002863	Black	HT-308U2SBK-HIT1TB

The office furniture/equipment listed above is/are assigned to the above-mentioned employee. Should any furniture and/or equipment require to be surveyed, transferred, or if an employee separates from the Division/Department, the employee should notify admin section for proper action and reporting. The employee is responsible to report to administration section/Bureau of Statistics and Plans and their immediate supervisor any loss or damages to any of the furniture/equipment for immediate action.

Employee Signature

Date

4-Jan-12

**BUREAU OF STATISTICS AND PLANS  
OFFICE FURNITURE AND EQUIPMENT SURVEY**

Employee Name: Planning Information Program

Date: 8-Jan-13

Section: Planning Information Program

Item	Make	Model No.	Serial No.	Color	REMARKS
Executive Chair	Executive ishnet back	HS-804/805/506			
Lamination	Fellows	V125			Library Research Desk
Paper cutter	X-Acto Heavy Duty	26364		Beige	24-inch Paper Trimmer
Paper cutter	X-Acto Heavy Duty	26355		Beige	15-inch Paper Trimmer
Projection Screen	ADSOM	5417-1032 (?)		Black	2010 Census - 0327
Projector	ViewSonic PJD5112	VS12618		Black	SVGA DLP Projector
Projector Remote Control	ViewSonic		RLP1026319999	Black	ViewSonic Projector
Projector Video Cable	ViewSonic	J2552-0072-03		Silver/black	ViewSonic Projector
Projector Power Cord	ViewSonic	J2552-0109-00		Black	ViewSonic Projector
Surge Protector	Belkin	AS10301		Black	ViewSonic Projector
Chair, wheeled				Black	ViewSonic Projector
Chair, wheeled				Mottled grey	2010 Census - 0764
Chair, wheeled				Mottled grey	2010 Census - 0731
Whiteboard, wheeled				Mottled grey	2010 Census - 0730
Folding Table, 3'x6'		Tripod		White	2010 Census - 1371
Folding Table, 3'x6'				White	2010 Census - 1501
Folding Table, 3'x6'				White	2010 Census - 1502
Folding Table, 2'x4'				White	2010 Census - 1503
Floor Reading Lamp	Hampton Bay			White	2011 Census - 1370
VoiceStation 300	Polycom	2201-17910-001	M8094500417A	Silver	2010 Census - 0723
T-Line	Polycom	2201-17020-601	H80945E2221F	Black	2010 Census - 0543
<b>Badging System</b>					
CPU(harddrive)	Dell			Black	2010 Census
Monitor	Dell		1SL1351	Black	
Keyboard	Dell		MX-07R477-48923-37G-0A99	Black	BSP-001
Mouse	Dell		CN-0G0842-71616-3C5-3577	Black	BSP-003
Digital Camera	Canon PowerShot		HCD51647146	Black	BSP-004
Badge Processor System			6526014132	Silver	
HP Printer	HP Color LaserJet CP1215		V90743	Black	
HP Printer	HP Color LaserJet CP3525n	CC469A		Grey	2010 Census - 0504
Step-stool 2-step round	Rubbermaid		CNCC99S006	Grey	2010 Census - 0450
Pin-up Board	Quartet			Tan	2010 Census - 0431
Water Cooler	GE			Dark brown	2010 Census - 1535
Paper Shredder	Martin Yale	Profile	9100220402	Black	2010 Census - 0565
Folding Table	Pressboard with steel legs	Olympia 1400.1C	81650.01873.E	Grey	2010 Census -
Ladder, aluminum				(none)	Pressboard with steel legs
Platform Hand Truck				(none)	8-foot ladder
Standard Hand Truck				(none)	24x36-inch





File cabinet, 5-drawer					AM319	Grey	
File cabinet, 5-drawer					AM315	Grey	GovGuam 006352
File cabinet, 5-drawer					AM417	Grey	
File cabinet, 5-drawer					AM421	Grey	GovGuam 006348
File cabinet, 4-drawer					AM405	Grey	
Steel bookcase, 5-shelves					R520	Beige	Duplicate
Steel bookcase, 5-shelves					R166	Beige	Duplicate
Steel bookcase, 5-shelves					039	Beige	
Steel bookcase, 5-shelves					131	Beige	
Steel bookcase, 5-shelves					076	Beige	
Steel bookcase, 5-shelves					299	Beige	
Steel bookcase, 5-shelves					124	Beige	
Steel bookcase, 5-shelves					137	Beige	
Steel bookshelf, 6-shelves					115	Beige	
Steel bookshelf, 6-shelves					HON	(none)	Beige
Storage cabinet, 5-shelves					HON	(none)	Beige
Bookshelf, wood, 5-shelves					0328	(none)	Beige
Bookshelf, wood, 5-shelves					DPW	Wood	1 of 19 DPW new shelves
Bookshelf, wood, 5-shelves					DPW	Wood	2 of 19 DPW new shelves
Bookshelf, wood, 5-shelves					DPW	Wood	3 of 19 DPW new shelves
Bookshelf, wood, 5-shelves					DPW	Wood	4 of 19 DPW new shelves
Bookshelf, wood, 5-shelves					DPW	Wood	5 of 19 DPW new shelves
Bookshelf, wood, 5-shelves					DPW	Wood	6 of 19 DPW new shelves
Bookshelf, wood, 5-shelves					DPW	Wood	7 of 19 DPW new shelves
Bookshelf, wood, 5-shelves					DPW	Wood	8 of 19 DPW new shelves
Bookshelf, wood, 5-shelves					DPW	Wood	9 of 19 DPW new shelves
Bookshelf, wood, 5-shelves					DPW	Wood	10 of 19 DPW new shelves
Bookshelf, wood, 5-shelves					DPW	Wood	11 of 19 DPW new shelves
Bookshelf, wood, 5-shelves					DPW	Wood	12 of 19 DPW new shelves
Bookshelf, wood, 5-shelves					DPW	Wood	13 of 19 DPW new shelves
Bookshelf, wood, 5-shelves					DPW	Wood	14 of 19 DPW new shelves
Bookshelf, wood, 5-shelves					DPW	Wood	15 of 19 DPW new shelves
Bookshelf, wood, 5-shelves					DPW	Wood	16 of 19 DPW new shelves
Bookshelf, wood, 5-shelves					DPW	Wood	17 of 19 DPW new shelves
Bookshelf, wood, 6-shelves					DPW	Wood	18 of 19 DPW bookshelves
Bookshelf, wood, 6-shelves					DPW	Wood	19 of 19 DPW bookshelves
Bookshelf, wood, 6-shelves					DPW	White	Black trim
Bookshelf, wood, 6-shelves					DPW	Wood	1 of 4 original shelves
Bookshelf, wood, 6-shelves					DPW	Wood	2 of 4 original shelves
Bookshelf, wood, 6-shelves					DPW	Wood	3 of 4 original shelves
GBC ValoBind System 3 Pro					(none)	Wood	4 of 4 original shelves
GBC CombBind C200					GBC	Wood	
IBM Typewriter					IBM	Off-white	
Printer (US Dept. of Commerce)					HP Color LaserJet 4600	Black	
Printer					HP LaserJet 8000N	Beige	Type 6783
Internet access					HP LaserJet 5	Beige	
Internet access					Intel	Beige	CD0000234356
Internet access					Express 510T	Grey	Initial Express 510T Switch
						Grey	Fiberoptic interface

Sony Digital Still Camera	Sony CyberShot	DSC-W100	682630	Silver	with battery charger
Dell DLP Front Projector	Dell	3400MP	DSSJ191	Silver	CN-0M8591-S0081-67R-0251
Dell DLP Front Projector Remote	Dell	TSER-1R01	60601967	Silver	Remote control
Dell Latitude Laptop Computer	Dell	D610	42VQ5B1	Grey	CN-0M7181-48643-675-1760
Dell USB Mouse	Dell	MG56U0A	F0700KA6	Black	2-button with wheel
Dell Laptop AC Adapter	Dell	ADP-90AH B	CN-0C8023-48661-65M-5RD6	Black	CN-0C8023-48661-65M-5RD6
Dell Floppy Drive Module (External)	Dell	MPF82E	CN-0Y6933-12591-673-00J8	Black	CN-0Y6933-12591-673-00J8
Dell Floppy Drive Module Cable	Dell			Black	CN-0J2711-12802-665-0W6H
Dell USB Flash Memory Key	Dell		(none)	Black	512MB
Standard Cassette Transcriber	Panasonic	RR-830	XE0BA15510	Black	Foot control and headset
Computer table, steel				Beige	Beige with brown top
Desk, two-drawer, wooden				Brown	writing table
End table, one-drawer, rattan				Brown	with storage shelf
End table, one-drawer, rattan				Brown	no shelf
Bookshelf, three shelves, rattan				(none)	White
Paper cutter				(none)	Grey
Stepping stool, round				(none)	Tan
Chair, wheeled	Kokuyo	CR-1	371523	Brown	
Chair, wheeled w/ arm rest	Chitose			(none)	Grey
Fire extinguisher	Kidde	XL10 TCZ-2	KL311187	Red	Multipurpose Dry Chemical
Vacuum cleaner	Hippo Portable Hand Vac	999	(none)	Black/white	Hose with 5 attachments
UPS (Battery Backup)	Maruson	900VA	321009100062		
UPS (Battery Backup)	Maruson	900VA	321007100347		
UPS (Battery Backup)	Maruson	900VA	321009100026		

The office furniture/equipment listed above is/are assigned to the above-mentioned employee. Should any furniture and/or equipment require to be surveyed, transferred, or if an employee separates from the Division/Department, the employee should notify admin section for proper action and reporting. The employee is responsible to report to administration section/Bureau of Statistics and Plans and their immediate supervisor any loss or damages to any of the furniture/equipment for immediate action.

Employee Signature \_\_\_\_\_

Date \_\_\_\_\_

Bureau of Statistics and Plans  
 Prior Year Obligations for FY 2014

A	B	C	D	E	F	G
Transaction/ Obligation Date	Transaction Type	Vendor	General Fund (\$)	Special Fund (\$)	Federal Fund (\$)	Reasons for Nonsubmittal or Nonpayment
<b>Total</b>			<b>\$0.00</b>	<b>\$0.00</b>	<b>\$0.00</b>	

Note:

- Column A: Completion date of transaction or event prior to October 1, 2010.
- Column B: Transaction Type such as personnel action, contracts, etc.
- Column C: Vendor or Party owed
- Column D, E, & F: Identify funding source and dollar amount inclusive of associated penalties or fees; if more than one transaction, need to total all transactions.
- Column G: Note item of concern.