



# Construction Views

## CONTENTS

- 2 | Calendar of Events
- 2 | President's Column
  - 3 | New Members
- 3 | Board of Directors
  - 4 | Ask Ms. Awards
  - 5 | The MCA Choice Award
- 6 | 2013 Golf Most Successful Ever
- 7 | Golf Event Sponsors
- 8 | Member to Member
  - 12 | Sponsors
  - 12 | Program Registration Form

## Back by Popular Demand – Don't Miss the July Program on Sales!

Wednesday, July 17, 2013  
7:30 a.m. - 9:00 a.m.

# 14 Touches to Win the Sales Cycle

### Wendy Nemitz (Ingenuity Marketing Group, LLC)

Find and reach out to prospective clients before they're buying. It's at the heart of lead nurturing, but many professionals today have a hard time knowing how to reach out...and where. This presentation will outline the 14 best ways to successfully reach out, share your expertise without sounding like it's a hard sell, and warm up prospects to choose your firm for its knowledge and credibility. Avoid pricing pressures and win the sale (before your competitors even know what hit them) through these proven relationship builders.

See page 12 for the program registration form!

For more information, please call (952) 928-4646 or  
email [info@mnconstruction.org](mailto:info@mnconstruction.org)

## Calendar of Events

**Wednesday, July 17, 2013**

14 Touches to Win the  
Sales Cycle with Wendy Nemitz  
(Ingenuity Marketing Group, LLC)

*American Engineering Testing, Inc.*

**Friday, October 4, 2013**

2013 Quiz Bowl and  
Intercollegiate Career Fair

**October 5-7, 2013**

CANstruction

**Wednesday, January 29, 2014**

Awards of Excellence  
Dinner & Gala

Visit [www.mnconstruction.org](http://www.mnconstruction.org)  
for more information and to  
register today!

MCA is a non-profit association dedicated to educating and promoting the construction industry. Statements of fact and opinion in this publication are the responsibility of the authors alone and do not necessarily reflect or imply the opinion of the members, directors or staff of MCA.



## PRESIDENT'S COLUMN

*Nick Mannel, P.E. (MN, WI), LEED AP BD+C*

**W**e laughed, we cried, we used sunscreen and umbrellas. Another successful and record breaking golf event is in the books. This year, we again had record attendance with at least 120

registered golfers! Despite threatening to get nasty, the weather held out to give us a great day of golf; especially for one lucky golfer who had a hole-in-one! In addition to all the golfers, we had a number of students in attendance out on holes during the day and staying for dinner that evening. Their attendance is particularly valued since student scholarships are the beneficiary of the funds raised at the event. While the final dollar totals are not in yet, it appears that we will have another record broken for fundraising.

This successful event continues to strengthen our student outreach efforts. While our outreach effort started as simply awarding annual scholarships it has grown considerably. Today we have four annual events, student representatives on the board, and regular meetings with representatives from seven member schools. All these opportunities to interact raise an important question: What do we talk about? As one student said to me, "What can I say that is interesting to the professionals I'm speaking with?"

At first I was surprised. Then after thinking back to my college years I could understand his viewpoint. I remember the feeling of being disconnected from the working world. It is a stark contrast to the requirements of business development that most of us work with every day. We must know as much about current events in the industry as we can. So how do we bridge that gap?

For students, be confident about the work you are doing at school. Your classes, research projects, and extracurricular activities are relevant and interesting to industry professionals. We had many of the same classes you are taking, often taught by the same professors. We are working with the technologies you are learning about. We participated in the same extracurricular activities as you. We enjoy hearing how those things have changed and how much has stayed the same.

For professionals, engage the students and ask specific questions. Make it easy for the students to get involved in your conversations. Ask about the classes, research and extracurricular activities you were involved in. Describe the projects you are working on and connect the work you are doing with the classes students are taking.

Josh Carr, a UW Stout student and one of the MCA Board student representatives, has attended many of our Board meetings this year. He has done a fantastic job of raising questions, on occasion asking us to explain the details or background of the discussion. His questions have led to great follow-up conversations that have identified ways to get the program at Stout further involved in MCA. I encourage MCA members to follow Josh's lead by asking good questions and making the connections that will enhance our MCA experience.



*Networking. Business Development. Education.*

## **PLEASE HELP MCA WELCOME OUR NEWEST MEMBERS:**

### **Winkelman Building Corp**

Winkelman Building Corp. is a 44 year old commercial general contractor, design/build and construction management firm located in St. Cloud, MN. We specialize in "green" building techniques and cover a broad spectrum of commercial, industrial, retail, healthcare, senior housing, multi-family housing, churches and governmental building types.

[www.winkbuild.com](http://www.winkbuild.com)

### **Paula Carlson - MOMENTUM!**

Hello MCA! I'm thrilled to be a new member and meeting many of you at MCA events. I own MOMENTUM! Our clients tell us that we are masters at helping them get and keep the people they want as clients and employees. Let's have coffee (on me).

[www.momentumtest.com](http://www.momentumtest.com)

[www.linkedin.com/in/paulamcarlson/](http://www.linkedin.com/in/paulamcarlson/)

### **Aaron Gordon - Fabcon Precast, LLC**

Fabcon specializes in design, manufacture, and installation of structural precast concrete wall panels with an architectural finish. These wall panels can be used in a load bearing configuration and are available in a variety of R-values, finishes, and markets. Fabcon currently has three plan locations: Savage, MN, Grove City, OH and Mahoney, PA.

[www.fabcon-usa.com](http://www.fabcon-usa.com)

### **Please help MCA welcome our newest student member:**

#### **Ben Bowman**

University of Minnesota

# **MCA 2013 BOARD OF DIRECTORS**

President

**Nick Mannel, P.E., LEED AP**  
Loucks Associates

Vice President

**Gregg Johnson**  
Target Corporation

Treasurer

**Darrel Mullenbach, CPA, CCIFP**  
CliftonLarsonAllen LLP

Secretary

**Grant Tentis**  
Blanski Peter Kronlage  
& Zoch, P.A.

Past President

**Alana Sunness Griffith**  
Empirehouse, Inc.

## **DIRECTORS**

**Paul S. Almen**  
Hammargren & Meyer, P. A.

**Mark Becker**  
Fabyanske, Westra, Hart  
& Thomson, PA

**Jim Hentges**  
Cobb Strecker Dunphy  
& Zimmermann, Inc.

**Fred King**  
INSPEC, Inc.

**Chad Rettke**  
Kraus-Anderson  
Construction Company

## **STUDENT REPRESENTATIVES**

**Ryan Winge**  
Minnesota State University,  
Moorhead

**Josh Carr**  
University of Wisconsin - Stout

## **STAFF**

**Corinna Hastings, CAE**  
Executive Director & Editor



# Ask

## MS. AWARDS

*If you have a question for Ms. Awards, please email it to Alana Sunness Griffith, Awards Chair, c/o Corinna Hastings at [info@mnconstruction.org](mailto:info@mnconstruction.org).*

*Dear Ms. Awards,*

*I attended the February meeting at the North Education Center in New Hope that highlighted the project acknowledged as MCA's Choice Award recipient for 2013. I really enjoyed seeing the project "up close" rather than just a slide presentation about the specific challenges that were posed for the design and construction team for the building. I don't remember doing this for past winners. Will MCA continue this special program recognition in the future?*

*Sincerely,*

*Building Tour Lover*

*Dear "Lover",*

*The Awards Committee also "loved" the concept of being "up close" on site and hearing from the owner, designer and builder about the experience of creating this campus. In past years, the MCA Choice Award winners were acknowledged at the Awards Gala and given 5-10 minutes to share how their project was conceived, designed and constructed. It didn't seem fitting to abbreviate the presentation especially for those who really wanted to know more about the project.*

*This year was the first year that MCA utilized the February program to highlight the MCA Choice award winning project and go into detail about the challenges of the architect, builder and owner. Fortunately for us, this project was located in the Twin Cities area and gave us the opportunity to actually tour the building "after school" hours. We had the opportunity to see the school and how it provided an excellent learning and teaching environment for children with special needs.*

*Our tentative plan is to build on this success and do it again for next February. While we were fortunate to have a location close enough for touring this year, for winners outside the Metro area we may have to rely on "virtual tours". But with today's technology, almost anything is possible.*

*We are on the look-out for candidates! If you have projects that have unique conditions and meet the criteria for the MCA Choice Award, please email [info@mnconstruction.org](mailto:info@mnconstruction.org) with your ideas. The deadline for MCA Choice Award suggestions is August 30, 2013.*

*Sincerely,  
Ms. Awards*

## The MCA Choice Award is presented to a project that was constructed through:

- Resourceful blending or construction techniques and professionals
- Evokes positive ideals through community service or historical preservation
- Showcases a truly professional team effort
- Spearheaded by strong leadership
- Unique or visionary in design, stands out aesthetically
- Achieved through an innovative blending of progressive business and financial methods
- Involved creative use of materials
- Utilized public and private involvement and cooperation
- Completed safely with minimal injuries

If you have projects that have unique conditions and meet the criteria for the MCA Choice Award, please email [info@mnconstruction.org](mailto:info@mnconstruction.org) with your ideas. The deadline for MCA Choice Award suggestions is August 30, 2013.

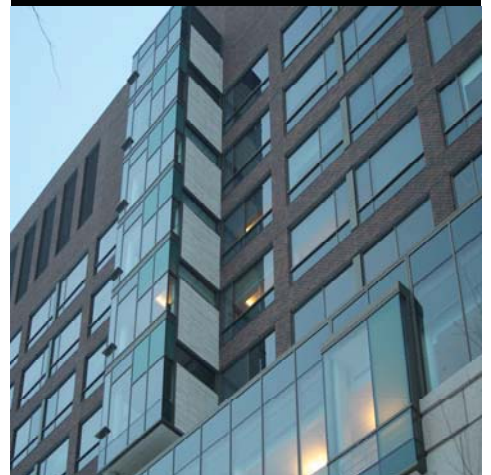
Radisson Blu at Mall of America



Normandale Community College



Centra Care St. Cloud Hospital



Caulking . Firestopping. Expansion Joint  
Systems. Traffic Coating. Restoration

**C**arciofini

[www.carciofini.com](http://www.carciofini.com)





## 2013 GOLF EVENT MOST SUCCESSFUL EVER

On Wednesday, June 5th, MCA hosted its 5th Annual Golf Event at Deer Run in Victoria, MN. The club is located in the western suburbs of the Twin Cities, and is noted for friendly service and an impeccably maintained golf course. Deer Run proved fun to play for the recreational golfer and challenging for the advanced player.

The outing this year was the most successful to date with thanks to all the members who continue to support the event and those who participated for the first time this year. Also contributing to the success were member volunteers, raffle item donors, hole and GPS sponsors, and five event sponsors. With just a spot of rain in the afternoon, the day was great and ended with a scrumptious dinner and raffle drawing. While not everyone who left the event that evening may have had a prize in hand, they all went away winners. The true winners will be the scholarship recipients who benefit from the funds raised by this event. Thank you so much to everyone involved!

**VIEW THE EVENT PHOTOS!**

*Another great MCA event to keep in mind is the Awards of Excellence Ceremony. Voting and nominations will be happening this fall, with the event taking place in January.*

### Congratulations to the 2013 Scholarship Golf Winning Teams



**1ST PLACE:**

Darrel Mullenbach, Mark Gaetz,  
Jim Kretsch, CJ Becker



**6TH PLACE:**

Bret Borth, Paul Longsdorf,  
Gretchen Kelly, Mark Becker



**12TH PLACE:**

Dan Guider, Tom Hochstaetter,  
Josh Tanner, Josh Helgesen

# MANY THANKS TO OUR 2013 SPONSORS FOR THEIR GENEROUS SUPPORT!

## EVENT SPONSORS



AMERICAN  
ENGINEERING  
TESTING, INC.

HAMMARGREN  
& MEYER, P.A.

KELLINGTON  
CONSTRUCTION, INC.



KRAUS-ANDERSON®  
CONSTRUCTION COMPANY

LOUCKS  
ASSOCIATES

## PREMIUM HOLE SPONSORS

Blanski Peter Kronlage & Zoch, P.A.  
CliftonLarsonAllen LLP  
Doran Construction  
Empirehouse, Inc.  
Frattonone Companies  
INSPEC, Inc.  
Steiner Construction Services, Inc.

## HOLE SPONSORS

Adolfson & Peterson  
Atomic Recycling  
CES Imaging  
Hanson Structural Precast  
HLB Tautges Redpath, Ltd.  
Lockton Companies, LLC  
Maverick Cutting & Breaking  
Ryan Companies  
Terracon

## GPS GOLF CART SPONSOR

Gephart Electric

# Member to Member

**MEGHAN HENNESSEY, CPA**, St. Paul, MN, was recently hired as an accountant by **BLANSKI PETER KRONLAGE & ZOCH, P.A.** (BPK&Z).

Meghan is a Certified Public Accountant licensed in Minnesota. Prior to coming to BPK&Z, Hennessey was a Revenue Tax Specialist at the Minnesota Department of Revenue. Hennessey graduated from St. Catherine University. ■

**KRAUS-ANDERSON CONSTRUCTION COMPANY (KA)** has hired **DANIEL OLSON** as project superintendent, **MARCIA MALINOWSKI** as marketing manager, and **BOB JANSSEN** and **ANTHONY LEON** as assistant project managers.

Olson served as a field superintendent for Strack Construction Company, Inc. in St. Cloud, Minn. and managed multi-million dollar projects for residential, commercial, industrial and government clients. He received his Stormwater Pollution Prevention Plan certification (SWPP) from the University of Minnesota. Olson is also a Minnesota city building official limited inspector and holds certifications from OSHA and Healthcare Construction.

Malinowski comes to KA with 25 years of marketing and business development experience in the professional services industry. Most recently, she managed marketing activities in construction, engineering and architecture for Eagan-based Graham Construction and Eden Prairie-based JE Dunn Construction.

Janssen was a project and estimating manager with St. Paul-based Carl Bolander & Sons, Co. and worked on projects at the University of Minnesota, Como Zoo and Hennepin County Library. He received his B.S. in Construction Management from the Minnesota State University-Mankato. Janssen holds concrete certifications with MN-DOT, OSHA and American Concrete Institute.

Leon was an assistant project manager and field engineer for Adolfsen & Peterson Construction of Minneapolis, specializing in mechanical systems. He has worked on projects at Flint Hills Resources, Normandale Community College, Great

River Energy and Centennial & Elliot Schools in Richfield, Minn. Leon received his B.S. degree in Business from the University of Wisconsin-Stout and holds an Advanced Training certification from OSHA. ■

**KRAUS-ANDERSON CONSTRUCTION**, in partnership with Century College, has been awarded a \$197,000 Minnesota Job Skills Partnership (MJSP) grant to develop technical training that addresses “Emerging Technologies in Commercial Construction.” The training will focus on the high-tech integration of cutting-edge tools and materials, and methods of construction, project management and technology.

“This grant partnership is a great example of Minnesota companies, training institutions and the state working together to customize training to fit business needs,” said DEED Commissioner Katie Clark Sieben. “In addition, Century College will benefit by the development of new technology courses applicable to the construction industry as well as other industries.”

Century College and Kraus Anderson will partner to provide training for new and existing personnel in Virtual Design and Construction (VDC), new construction materials and processes, and the use of mobile technologies. The staff will also refine protocols and develop training materials that integrate VDC and mobile applications, using VDC tools like Autodesk Revit for design and processing work orders via iPad and iPhone applications.

Century College is the largest two-year institution in the MnSCU system.

“This funding is very timely, as we continue to forge ahead with a number of initiatives that integrate technology in the workplace in a way that enhances effectiveness, maximizes efficiency, and promotes communication and collaboration,” said Mike Smoczyk, Kraus-Anderson’s director of education. “With Century’s help, we plan to develop course content and to greatly expand our use and implementation of innovative construction technology.” ■



**KRAUS-ANDERSON CONSTRUCTION COMPANY (KA)** has hired **STEPHANIE SELB** as director of community relations. She will work from the company’s headquarters

in Minneapolis.

For 14 years, Selb served as the vendor management specialist for the Minnesota Department of Administration, materials management division. She was also the vendor outreach program coordinator for the St. Paul Department of Human Rights & Equal Economic Opportunity.

In her position at Kraus-Anderson Construction, she will oversee and continue to build programs with minority, women and small business enterprise (M/W/SBE) organizations. Selb will also promote contract awards and new construction projects, and will collaborate with project management teams to assure compliance with various governmental employment goals. Selb received her B.S. in Marketing from Arizona State University. ■



**KATHY LUNDQUIST** has been named employee benefits manager for **KRAUS-ANDERSON COMPANIES**, which includes KA Construction, KA

Realty, KA Mortgage, KA Insurance and KA Capital. Lundquist will work from the KA Realty offices in Bloomington.

Lundquist has more than 30 years experience in the insurance industry and has previously been an account executive with KA Insurance since 1988. In her new position, she will oversee employee benefits administration, including insurance, multiple self-funded healthcare plans, savings accounts and employee leave benefits (FMLA) and related company programs. In addition, Lundquist will provide HR management for KA Realty and will manage KA Companies’ corporate wellness program.



Lundquist holds a Certified Insurance Counselors designation, and is a member of the Society of Insurance Counselors, and Risk and Insurance Management Society (RIMS). ■



**DORAN COMPANIES**, the Bloomington, Minnesota-based commercial developer, announced today that real estate leasing and management veteran **TEYA RYDRYCH** is

re-joining the company as general manager of the 342 unit Mill & Main luxury apartment project they are building on the banks of the Mississippi River near Downtown Minneapolis. In 2009, Rydrych led the lease-up of Sydney Hall, the Companies' initial foray into multi-family housing.

Rydrych, who has over 14 years of experience in real estate, began her career in residential leasing in 1999 and then went on to work in property management in the Twin Cities market. For the past three years she has been selling commercial and residential real estate.

Doran Companies owner and principal, Kelly Doran, said, "When you have a project like Mill & Main that is built to the highest standards, it is very important to extend that excellence to its day-to-day management. We know Teya and her ability to create trusting relationships with residents, provide extraordinary attention to service and observe the highest standards of interior and exterior maintenance."

The Mill & Main project is on schedule to open June 1 with 180 units and will begin construction this summer on a 162 unit second phase. ■

Minneapolis-based Ebenezer Management Services (EMS) will open its new \$12 million addition on May 21, 2013 at Arbors at Ridges, an assisted living community in Burnsville, Minn. The project is another in a long-term partnership between **KRAUS-ANDERSON** and EMS, which manages the community. A grand opening celebration is scheduled from 1:00-4:00 p.m. on Saturday, June 8th at the site with a ribbon-cutting ceremony at 2:00 p.m. Arbors at Ridges is located at 13897 Community Drive across from Fairview Ridges Hospital.

Constructed and owned by Kraus-Anderson, the development will be an addition to the existing Ebenezer Ridges

campus that currently offers skilled nursing transitional care, adult day care and child care. The new three-story development expands Arbors at Ridges current assisted living offerings and features 62 assisted living units, including a guest apartment and six Care Suites expressly designed for post-operative and therapy residents. The addition also allows the Ebenezer Ridges community to add memory care services, which will complete the care continuum for Ebenezer Ridges residents. ■

**KRAUS-ANDERSON CONSTRUCTION COMPANY** (KA) has been selected as construction manager at risk for a \$12 million addition and renovation project at Bemidji State University (BSU).

The project includes the renovation of Memorial and Decker Halls, the demolition of Sanford Hall and an addition to Memorial Hall, which will accommodate the relocation of the College of Business from Decker Hall (located in the residential area of campus), back into the academic heart of the University. Newly renovated Memorial Hall will give the business program the visibility and corporate image it needs to continue its growth.

Student service functions currently in Sanford Hall will be moved to a remodeled Decker Hall, which will bring together student life and student support services into a location which is central to instructional facilities and the residence halls.

Construction is scheduled to start in July of 2014. The architect is LHB Architects.

KA has a long history of construction projects for the university, including a 22,000-square-foot addition and 10,000-square-foot renovation to Sattgast Science Building in 2009; and a 12,250-square-foot classroom and a lab addition to NWTC Center for Allied Health in 2006. The 193,000-square-foot Sanford Center, a municipal venue completed in 2011, serves as home to the BSU hockey team. ■

**KRAUS-ANDERSON CONSTRUCTION COMPANY** has been selected to build a new school for Northeast Metro 916 Intermediate School District that will be the first of its kind to serve kindergarteners through eighth graders with special education needs.

The 70,000-square-foot education center, located in Blaine, Minn., will expand the

district's capacity to serve a growing need for education services from partner school districts. Northeast Metro 916 serves 10 member school districts providing educational services, special education and administrative services to meet the specific needs of students. Construction will begin on July 1, 2013 and is expected to be complete in July of 2014.

Special Education programs at Northeast Metro 916 are designed for students who are affected by neurobiological and behavioral disorders including autism. The number of Special Education students referred to the school district, particularly at the elementary and middle school levels, has grown significantly, necessitating a larger school that will accommodate more than 150 students, along with faculty, and staff. The school's 23 classrooms will replace a patchwork of owned and leased spaces throughout the school district's northeast metropolitan suburbs.

Midwest-based BWBR, whose architectural specialties include behavioral health, education and secure environments, designed the school as a national prototype for students with special health needs.

"The opportunity we have to create an environment that engages and nurtures students in an educational setting is unparalleled," said Steve Erickson, AIA, project manager for BWBR. "Combining the best elements that promote healing, learning and safety will enhance how the students live day-to-day, as well as how teachers will be able to connect with their students."

The design departs from traditional school floor plans by creating pods of learning communities, developing more open and warm spaces that assist faculty and support the students as they learn life skills of self-regulation, coping, communication, self-efficacy and socialization. The open designs empower students to flow through the space, while providing staff the ability to maintain sight and control.

The indoor environment avoids the institutional feel by incorporating connections to nature, which research shows as having a positive effect on student behavior. Design elements bring nature indoors to provide a calming atmosphere, and create a controlled outdoor space for students in which to learn, play and relax – while providing additional opportunities to teach life skills.

Borrowing from design solutions incorporated in mental health treatment centers, the school will also feature sensory rooms for students who can benefit from such therapies, and exercise areas for motor skill development and student engagement.

The new facility in Blaine is the third project in a recent partnership between Kraus-Anderson and BWBR, which brings innovative solutions to health and education settings. Projects include Regions Hospital Inpatient Mental Health Center in Saint Paul, Minn.; and Early Childhood Family Center in Stillwater, Minn.

“This exceptional building for District 916 is a national model and an example of a new trend in education construction,” said John Huenink, Kraus-Anderson vice president and director of the company’s education group. “We are proud to partner with BWBR on behalf of Northeast Metro 916 to meet the growing demand to support special needs children in our community.” ■



Deephaven Woods Senior Living, a new senior living community located on the campus of The Church of St. Therese in Deephaven, Minn., has broken ground. St. Therese Catholic Church has partnered with Ebenezer Society to form St. Therese Senior Living, LLC, a joint venture that will build Deephaven Woods.

Deephaven Woods Senior Living, which is expected to open by spring/summer of 2014, fulfills the Church of St. Therese’s desire to further its mission by providing a housing option to the region’s growing senior population. The project will be built by **KRAUS-ANDERSON**. Deephaven Woods Senior Living will be managed by Ebenezer Management Services, which will provide daily operational and management services.

The new senior living community is located on a 14-acre site, part of the church’s 26-acre campus. The two-story development consists of 78 units of independent, assisted living, memory care and Care Suite apartments, and is enhanced by onsite amenities including a chapel,

heated, underground parking garage, an expansive two-story lobby, and outdoor patios, porches, gardens and walking paths.

“We’re excited to be working with St. Therese to build this special place which will serve all people in the greater community. Deephaven Woods Senior Living offers everything seniors need for active, carefree senior living today, with the assurance of care for the future,” said Susan Farr, vice president of business development for Ebenezer Management Services.

Ebenezer Society and The Church of St. Therese will host a Ground Blessing for the community on Sunday, June 2, from 11:30 a.m. to 12:00 p.m. at the Church of St. Therese (18323 Minnetonka Blvd., Deephaven). ■

**KRAUS-ANDERSON CONSTRUCTION COMPANY** has been awarded a Governor’s Safety Award for superior performance in workplace safety and health. The Governor’s Safety Awards program is administered by the Minnesota Safety Council.

“An effective safety program reduces injuries and costs, maximizes productivity and builds morale,” said Carol Bufton, president of the Minnesota Safety Council. “Employers like Kraus-Anderson understand that safety is good business, now more than ever.”

Kraus-Anderson has one of the best safety records in the construction industry, a performance that for 22 consecutive years has earned the company the Governor’s Safety Award.

“KA’s commitment to our people’s safety is reflected in the company’s exceptional record of receiving this award,” said Al Gerhardt, COO of Kraus-Anderson. “No other recognition gives us more gratification.”

The award was presented May 16 at the Governor’s Safety Awards luncheon, part of the 79th Minnesota Safety & Health Conference and coordinated by the Minnesota Safety Council. The conference is the oldest and largest gathering of workplace safety and health professionals in the region. Since 1934, the annual Governor’s Safety Awards have honored Minnesota employers with exceptional safety performance. Applicants are judged on several years of injury data as it compares with state and national statistics, and on their progress in implementing a

comprehensive safety program. ■

**DORAN CONSTRUCTION**, the general contracting arm of the Doran Companies, has been chosen by Dallas-based developer Trammell Crow subsidiary High Street Residential to build Junction Flats, a 6-story, 182-unit apartment development on Fifth Street just North of Target Field in Minneapolis.

Ken Braun, Vice President for Doran’s construction company said the Junction Flats win continues a phenomenal rate of growth for the 10-year-old general contracting firm. “With the start of Junction Flats we now have over one thousand units of multi-family housing under construction for mostly third-party developers in Upper Midwest cities, including Bismarck, Duluth, and the Twin Cities,” Braun added.

Kelly Doran, the Doran Companies owner and principal said “while the multi-family housing boom is providing increased opportunity, as the economy improves we are seeing more activity from user-oriented retail operators. Fortunately, even in the downturn we were growing, but now we are seeing an accelerated rate of growth.” ■

**KRAUS-ANDERSON CONSTRUCTION COMPANY (KA)** has hired **MICHAEL BECCHETTI** as project manager; **PAUL WILCZYNSKI** as assistant project manager; and **JAKE LEONI** as safety coordinator.

Michael Becchetti will specialize in KA’s medical and healthcare construction projects. He had been a project manager for Minneapolis-based Knutson Construction where he oversaw numerous Twin Cities medical and healthcare projects, including Fairview Southdale Hospital, Children’s Hospital, Fairview Maple Grove Medical Center, Park Nicollet Methodist Hospital Frauenshuh Cancer Center and projects for Hazelden. Becchetti is a LEED accredited professional and is a member of the American Society for Healthcare Engineering, Twin Cities Healthcare Engineering Association and Construction Management Association of America.

Paul Wilczynski will focus on healthcare construction at KA. Previously, he was the owner of Racine, Wis.-based Residential Remodels. He was also an assistant project manager and project engineer for Madison, Wis.-based Vogel Bros. Building Co., where he worked on a number of healthcare projects for the University of Wisconsin.

Wilczynski holds a BS in Construction Management and Engineering from the Milwaukee School of Engineering. He is a member of the Associated General Contractors of America (AGC) and American Institute of Constructors.

Jake Leoni will support KA's on-site construction teams, and will enforce the corporate safety and health policies and procedures. Prior to joining KA, he was a project supervisor at PCL Construction in Burnsville, Minn. Leoni received his BS in Applied Science and Exercise Science and earned his Master's in Environmental Health and Safety from the University of Minnesota - Duluth. He holds certifications as a Construction Health and Safety Technician, Construction Risk and Insurance Specialist and Associate in Risk Management, and is a member of the American Society of Safety Engineers. ■



**AMERICAN ENGINEERING TESTING, INC. (AET)** promoted **WILLIAM HOLDER, PE**, to Vice President – Marketing Director. Mr. Holder has overseen marketing and

business development in AET's western region for the last two years and will now lead these endeavors companywide. In addition, Mr. Holder will be very active with the implementation and execution of AET's strategic plan and key corporate initiatives going forward.

Mr. Holder has 21 years of experience in performing and managing environmental, geotechnical, and construction materials engineering and testing services, as well as extensive marketing and business development experience. He has worked with commercial, state, and federal government clients and is a registered professional engineer in North Dakota, South Dakota, Montana, Wyoming, and Idaho. ■



**DORAN COMPANIES** announced today that The Private Bank and Bremer Bank will co-finance the construction for The

Bridges, a 210-unit student housing apartment building on a vacant lot on University Avenue and perched between the 10th Avenue and 35W bridges in the Marcy-Holmes neighborhood of Minneapolis.

The 11-story building, at the gateway to the University of Minnesota's Dinkytown area, is developer Kelly Doran's fifth housing project at the University of Minnesota since 2008. When completed in August of 2014 Doran will have over 600 units of student housing leased to university students.

Doran, who is also developing market-rate luxury apartments on the Mississippi River in the historic St. Anthony Falls area near downtown Minneapolis, said once he had The Bridges property under contract the Marcy-Holmes neighborhood leaders urged him to build a taller building to serve as a "distinguishing landmark" in their community. "As it turns out the 11-story design will definitely be visible to travelers on 35W and will clearly stand out in the neighborhood—not to mention the views it will provide for its residents," Doran added.

Doran Construction, the general contracting company in the Doran group of businesses, will build the project. Currently, Doran Construction has over 1000 units of commercial housing under construction in Minnesota and North Dakota for Doran Development and several third-party developers.

Designed by Doran Architecture, The Bridges will provide students with a full array of amenities, including balconies, video game rooms, a theatre, fitness center and quiet study areas. When completed, The Bridges will join the Doran group of student housing properties managed by Doran Management. ■



**KRAUS-ANDERSON CONSTRUCTION** has completed the construction of the 24,365-square-foot renovation and 48,820-square-foot addition to Riverwood Healthcare Center, an independent, integrated hospital and clinic facility serving Aitkin County and nearby communities in northern Minnesota. An open house will take place from 4:30 – 7:00

p.m. on Thursday, June 6.

The extensive \$21 million project relocated ER and ICU, and remodeled the patient, specialty treatment and pharmacy departments, as well as waiting areas and staff amenities – all accomplished without interruption to the clinic or hospital services.

KA converted 11 existing patient rooms to single patient rooms, and added new labor and delivery areas, as well as five infusion bays for chemotherapy and other medication therapies. In addition, the renovation created a new support services area that houses medical records and human resources, bringing all Riverwood employees in Aitkin into one location.

The expansion effort also facilitated an economic boost, created 18 new positions at the hospital and generating 130 new construction jobs with a payroll of approximately \$6 million for the duration of construction. KA also hired subcontractors from Aitkin as well as the surrounding area, providing regional economic impact.

Included in Minnesota Physician's 2013 Health Care Architecture Honor Roll, Riverwood Healthcare Center was designed by HDR, Inc. of St. Paul, Minn. The owner representative is Yanik of Spring Park, Minn.

**Would you like to see your name or your company's name in the Member To Member section of Construction Views?**

**If so, please send all company press releases, announcements and updates to Corinna Hastings, Executive Director and Editor, at [info@mnconstruction.org](mailto:info@mnconstruction.org) or 4248 Park Glen Road, Minneapolis, MN 55416.**



# We Can't Thank You Enough!

We thank the following  
**Gold Sponsor**  
(\$500 level) for their support:

**Cobb, Strecker, Dunphy  
& Zimmermann, Inc.**

We thank the following  
**Silver Sponsor**  
(\$250 level) for their support:

**Carciofini Company**

MCA

4248 Park Glen Road  
Minneapolis, MN 55416  
(952) 928-4646 • fax (952) 929-1318  
www.mnconstruction.org  
info@mnconstruction.org

Corinna Hastings, CAE  
Executive Director and Editor

## Minnesota Construction Association (MCA) Program Registration

July 17, 2013 | 14 Touches to Win the Sales Cycle

\$30 Members pre-registered & pre-paid

\$35 Members at the door

\$25 each for three (3) or more individuals from the same member company

\$50 Non-Members

Free - Students (with valid full-time student i.d.)

Name(s) \_\_\_\_\_ Phone \_\_\_\_\_

Company \_\_\_\_\_

Address \_\_\_\_\_

City/State \_\_\_\_\_ Zip \_\_\_\_\_

Card Number \_\_\_\_\_ Exp. Date \_\_\_\_\_ / \_\_\_\_\_

Card Holder's Signature \_\_\_\_\_ Today's Date \_\_\_\_\_ / \_\_\_\_\_

Card Holder's Name (print) \_\_\_\_\_ Total Payment \$ \_\_\_\_\_

Billing Address of Credit Card (if different than above) \_\_\_\_\_

Return registration with payment to:

MCA | 4248 Park Glen Road | Minneapolis, MN 55416 | Phone (952) 928-4646 | Fax (952) 929-1318