

**ONCAMPUS**

**SUNY**

**2015**



The State University  
of New York

MORRISVILLE  
STATE COLLEGE



Your first step to  
**U.S. university success**  
through the State University  
of New York

- 02 You will find it at ONCAMPUS SUNY
- 03 SUNY system map
- 04 Why ONCAMPUS SUNY?
- 06 New York State
- 08 Campus
- 10 Curriculum
- 12 General Education Requirements
- 14 University Transfer Advising
- 16 Program Details

ONCAMPUS SUNY is proud to work in association with the State University of New York and Morrisville State College to offer high-quality university transfer programs for international students.

**Find out more:**  
[www.oncampususa.com](http://www.oncampususa.com)

**Facebook:**  
[www.facebook.com/ONCAMPUSSUNY](http://www.facebook.com/ONCAMPUSSUNY)

## No matter what you want to study, you'll find it at SUNY.

The State University of New York (SUNY) is the largest university system in the United States. SUNY's 64 schools include everything from large research universities and academic medical centers to liberal arts colleges and agricultural and technical institutes. With ONCAMPUS SUNY, you can transfer into more than 5,000 degree and certificate programs – far more than with any other public or private school in the U.S.

“ONCAMPUS provided me an authentic American learning environment. The staff was always willing to help me out no matter what kind of academic or personal problems I've encountered. And now I feel excited to start my new life at Stony Brook University in NY state.”

NAME  
 Yu Chieh “Maggie” Lin

NATIONALITY  
 Taiwanese

MAJOR  
 Political Science B.A.



### Preparation for your future

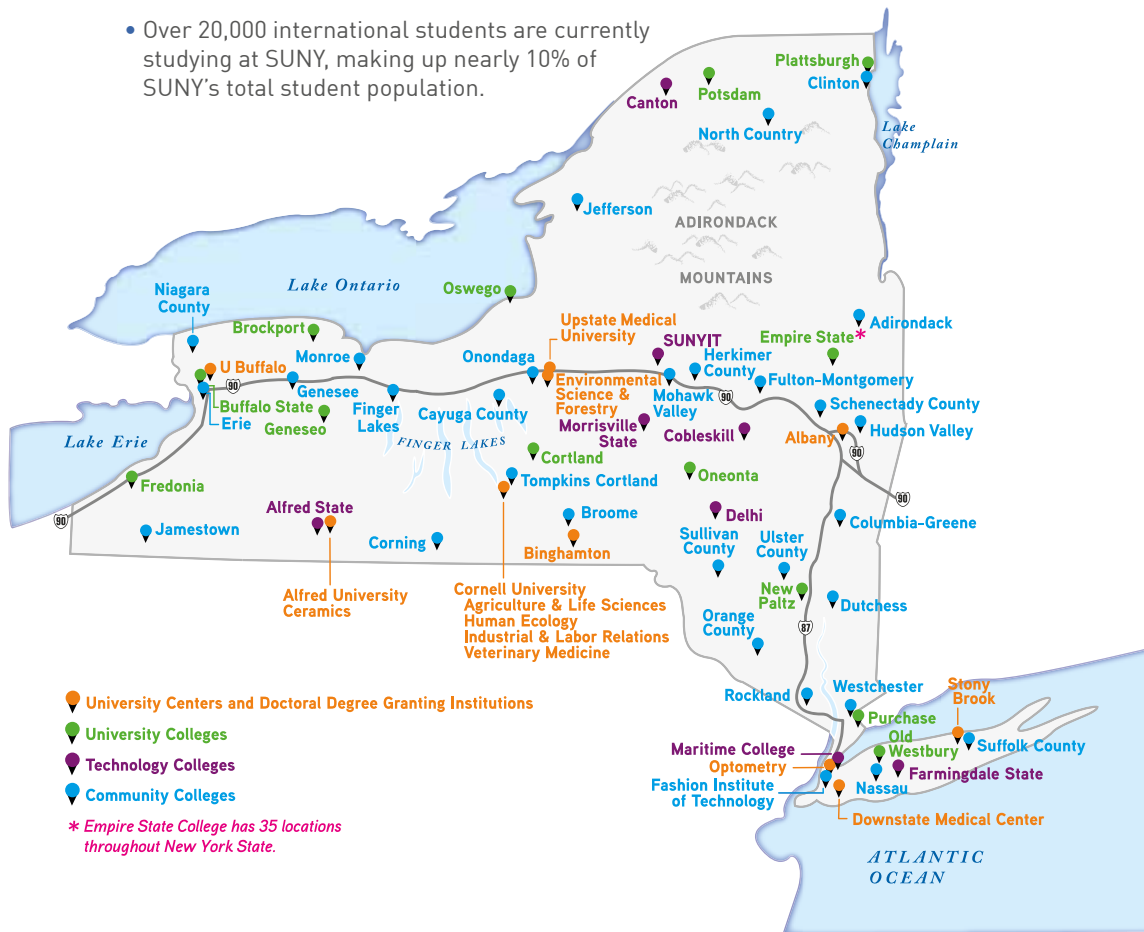
- ONCAMPUS SUNY helps international students succeed – academically, socially, and professionally – with a one-year university transfer program delivered at SUNY's Morrisville State College.
- You will earn a full year of college credits, living and learning in one of the most beautiful areas in the state of New York and become prepared to complete your U.S. degree at the SUNY institution that provides the ideal fit for your academic and personal interests.





## SUNY schools have international reach

- The SUNY system's reputation for academic excellence attracts students from all over the world.
- Over 20,000 international students are currently studying at SUNY, making up nearly 10% of SUNY's total student population.



11 SUNY campuses named “Best Regional Colleges (Northeast)” by *Princeton Review* for 2015.

## Schools in the SUNY system include:

- Adirondack Community College
- University at Albany
- Alfred State College
- Alfred University, NYS College of Ceramics
- Binghamton University
- The College at Brockport
- Broome Community College
- Buffalo State College
- University of Buffalo
- SUNY Canton (College of Technology)
- Cayuga Community College
- Clinton Community College
- College of Agriculture & Technology at Cobleskill
- Columbia-Greene Community College
- College of Agriculture & Life Sciences at Cornell University
- College of Veterinary Medicine at Cornell University
- College of Human Ecology at Cornell University
- School of Industrial & Labor Relations at Cornell University
- Corning Community College
- SUNY Cortland
- SUNY Delhi
- Downstate Medical Center
- Dutchess Community College
- Empire State College (35 locations across NY state)
- College of Environmental Science and Forestry at Syracuse University
- Erie Community College
- Farmingdale State College
- Fashion Institute of Technology
- Finger Lakes Community College
- SUNY Fredonia
- Fulton-Montgomery Community College
- Genesee Community College
- SUNY Genesee
- Herkimer County Community College
- Hudson Valley Community College
- Jamestown Community College
- Jefferson Community College
- Maritime College
- Mohawk Valley Community College
- Monroe Community College
- Morrisville State College
- Nassau Community College
- SUNY New Paltz
- Niagara County Community College
- North Country Community College
- The College at Old Westbury
- SUNY Oneonta
- Onondaga Community College
- College of Optometry
- Orange County Community College
- SUNY Oswego
- SUNY Plattsburgh
- SUNY Potsdam
- Purchase College
- Rockland Community College
- SUNY Institute of Technology
- Schenectady County Community College
- Stony Brook University and Medical Center
- Suffolk County Community College
- Sullivan County Community College
- Tompkins Cortland Community College
- Ulster County Community College
- Upstate Medical University
- Westchester Community College



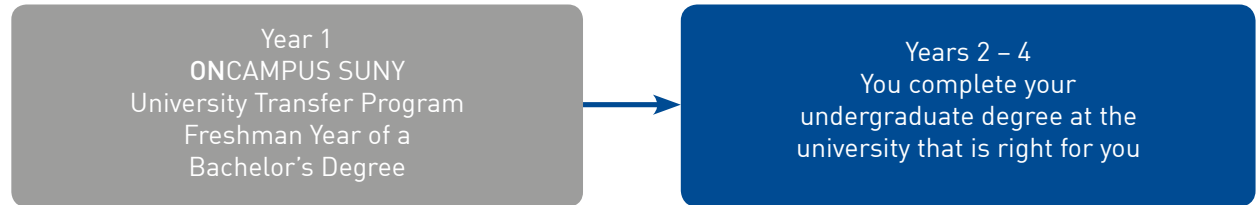
# MORRISVILLE STATE COLLEGE

## ONCAMPUS SUNY gives you every educational advantage

ONCAMPUS SUNY offers a first year university transfer program at Morrisville State College, an MSCHE accredited\* organization, recognized by US News and World Report as a Top Tier Best Regional North College. It is also rated #1 in student satisfaction for academic experiences, student life, and college outcomes by ACT.

At ONCAMPUS SUNY, you will earn 33-34 college credits taught by Morrisville State College faculty, equivalent to a standard first year course load, but benefit from the extra one-on-one support that the ONCAMPUS SUNY program provides. As an ONCAMPUS SUNY student you will live in campus dormitories, and have daily access to advisors, peer tutors, and educational counselors to help you acclimate academically and socially. Morrisville State College is known for its reputation for high academic standards, enriching campus life, and exceptional location. Together with its diverse student body, ONCAMPUS SUNY gives you the best advantages from the start of your college career.

\* Morrisville State College is fully accredited by the Middle States Commission on Higher Education (MSCHE). The MSCHE is recognized by the U.S. Secretary of Education and the Council on Higher Education Accreditation (CHEA).



NAME  
"Kitty" Phuong Thi Truc Le

NATIONALITY  
Vietnamese

MAJOR  
Accounting A.S. (SUNY Morrisville);  
Accounting and Business Administration  
B.A. (SUNY Albany)

"Since I am an international student and English is my second language, I had many difficulties while studying at college. If I had started right away at a big university, I would have struggled much more with big classrooms and hundreds of classmates. Morrisville is the perfect place to start up with basic knowledge, prepare for the long run in the future with small classrooms, enthusiastic professors, and friendly staff."



## WHY STUDY IN THE U.S.?

**Choices** – No other country comes close to offering as many learning options.

**General education** - Graduates are well-rounded with the skills and knowledge employers seek.

**Flexibility** – Up to two years allowed before choosing a major; easy to transfer to another school.

**Diversity** – The U.S., and New York State in particular, attracts students from around the world.

**Resources** - Support for international students, including housing, academics, and student groups, is extensive at most U.S. schools.

**Prestige** – A degree from a U.S. college is recognized globally as a distinctive achievement.

**Internships** – Most education programs include opportunities to work in the field before graduation, providing valuable work experience and business contacts.

**English immersion** – There is no better way to improve language skills than by living and learning in the U.S.

**Travel opportunities** – ONCAMPUS SUNY is just four hours from New York City and four and a half hours from Boston.

**American culture** – Discover the difference between the real world and what you have seen on TV.

## Why choose ONCAMPUS SUNY?

- **Flexible entry requirements:** SAT scores, personal statements, and letters of recommendation are not required.
- **Ideal first-year university experience:** Equivalent to Year 1 at a university; 33-34 credits upon completion.
- **Live and study in the heart of New York State:** You will study and live alongside university students from day one and have full access to all facilities and resources.
- **Safe and supportive “soft landing”:** Receive unparalleled support and guidance from welcoming faculty and staff on a beautiful, traditional campus.
- **Choice and flexibility:** Begin your studies at Morrisville State College and have the opportunity to apply to any field of study at the SUNY university of your choice.
- **Guaranteed transfer credits:** Transfer your MSC-earned credits to any of the State University of New York’s 64 schools with choices of over 5,000 degrees and certification programs.
- **Start your education at a top-ranked SUNY regional school- Morrisville State College:**
  - #44 Regional Colleges (North)
  - #14 Top Public Schools - Regional Colleges (North)
  - #1 in Student Satisfaction - Academic Experiences, Student Life, and College Outcome (ACT).
- **An education in the SUNY system is a highly ranked education:** 23 SUNY campuses were ranked among the top colleges and universities in the nation (*U.S. News and World Report*).

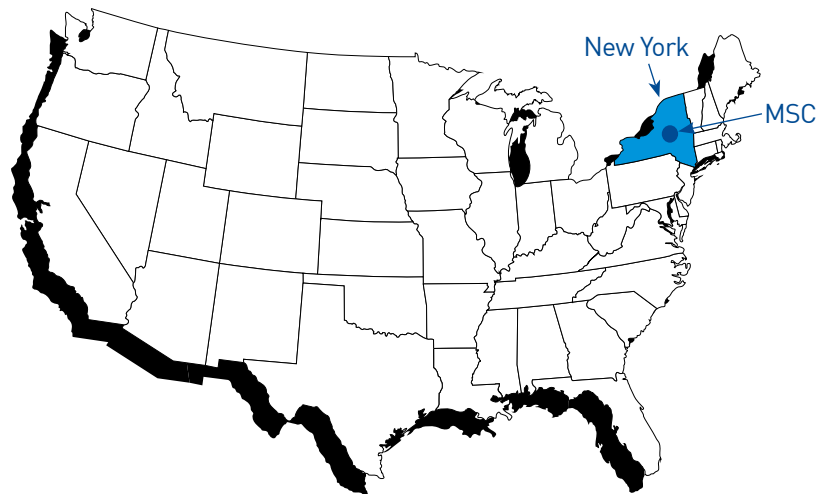
# Begin your university experience in the heart of NEW YORK STATE

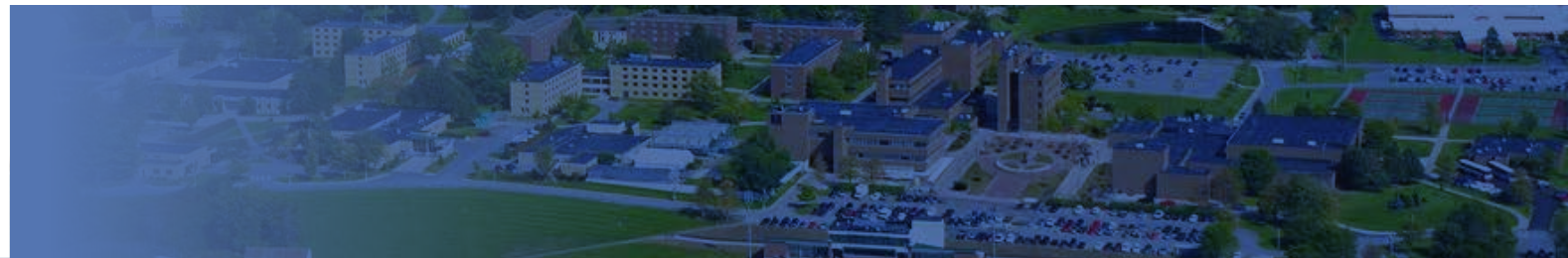
Morrisville State College is located in New York State's Madison County, the geographic center of the state, making it easy for you to explore the area's natural beauty. Enjoy hiking, biking, and horseback riding in the warmer months, and cross-country skiing and snowshoeing trails in the winter.

The area is a paradise for outdoor enthusiasts and it is close to many of the Northeast's most popular destinations including the Adirondacks, Lake Ontario, the Baseball Hall of Fame, Niagara Falls, and New York City, among many others.

Morrisville State College offers 75 majors, boasts an 18 to 1 student to faculty ratio, and has a beautiful and easily accessible 150-acre campus. The college also maintains 1,000 acres of farm and woodland and a satellite campus in nearby Norwich, NY.

New York State ranks first in the Northeast region and second in the nation in attracting international students in higher education, according to the Open Doors Report for 2013.





## New York State's Top Attractions

People are attracted to central New York State throughout the year for entertainment and culture including:

- Beautiful parks including Letchworth State Park (seen left) and Chittenango Falls State Park
- Museums covering art, farming, classic cars, and more (i.e. All Things Oz Museum)
- Caves and caverns to explore
- Scenic railroads
- The Madison County Freedom Trail
- Free carousel rides (Binghamton, NY is the unofficial carousel capital of the world)
- Farmer's markets
- Winery and micro-brewery tours
- The New York State Fair (held every August)
- Winter sports:
  - Skiing & Snowboarding
  - Ice skating
  - Tobogganing
  - Sledding
  - Ice hockey
- Minor league baseball
- Whitewater rafting
- Hot air ballooning
- Motorsports parks
- 5 International and National Hall of Fames!
  - Baseball
  - Boxing
  - Distance Running
  - Professional Wrestling
  - Women's Rights

# THE PERFECT CAMPUS

for any first-year student



## From Morrisville you have easy access to transportation:

- Daily shuttle services to New York City from the Morrisville Campus Store
- Or take a plane: New York City is just a one-hour plane ride away from the Syracuse airport—perfect for short getaways
- Free shuttles multiple times a week to area retailers, malls and shopping centers, local recreation, and entertainment
- Weekend trips to Destiny USA mall in Syracuse throughout the academic year
- Additional travel services offered by the University Travel Center—staffed and operated by 4th year Travel and Tourism students

With just over 3,000 students, **ONCAMPUS SUNY**'s host college offers many new and unique facilities including a state-of-the-art design center, newly renovated residence halls, a nationally recognized equine rehabilitation center, and an aquaponics greenhouse that supports the school's renowned sustainability programs. Other academic areas of excellence include business, engineering, automotive, information technology, criminal justice, and hospitality.

Like any Morrisville State College student, you will have access to a dining hall, student center, coffee bar, wellness center, and athletics stadium, plus over 40 student clubs and organizations, a 24-hour store, a bank, a pharmacy, and multiple campus restaurants.

While there are many off-campus entertainment options, by far the most popular is the free shuttle bus that runs to Destiny USA—the 6th largest mall in the U.S.! As an **ONCAMPUS SUNY** student you will also enjoy meeting and socializing with students attending nearby schools including Syracuse University, Colgate University, and Hamilton College.

23 SUNY campuses were ranked among the top colleges and universities in the nation by *U.S. News & World Report* in 2013.

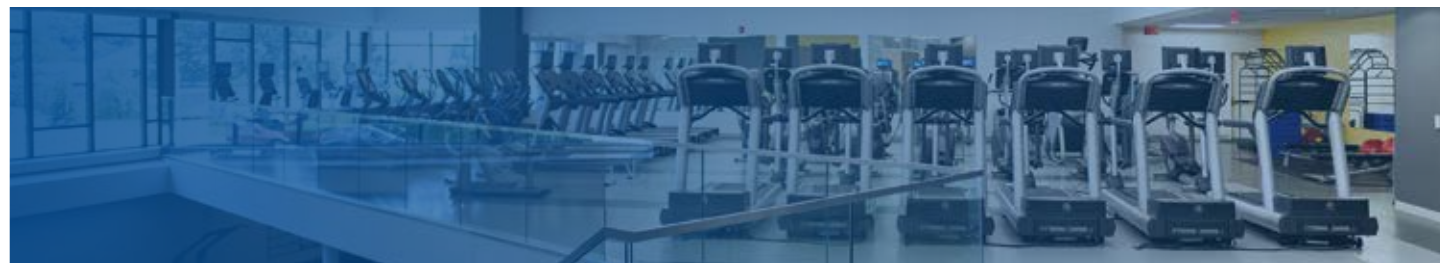
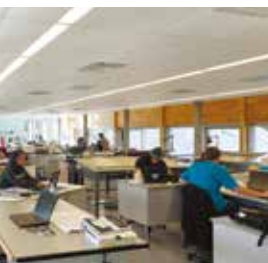
Morrisville State College enriches your learning in and out of the classroom

### Intramural Sports:

- Basketball
- Kickball
- Dodgeball
- Soccer
- Ice Hockey
- Volleyball







**Clubs:**

- African Student Union Black Alliance (ASUBA)
- Agricultural Engineering
- Agronomy Club
- Alpha Delta Mu (ADM)
- Architecture Club
- Automotive Club
- Baccalaureate Student Nursing Association
- Brothers & Sisters In Christ (B.A.S.I.C.)
- Caribbean American Student Union (CASU)
- Casino Management Organization
- Collegiate FFA Club
- Conservation Tri-Society
- Criminal Justice Club
- Engineering Science Society
- Friars' Drama Club
- Future Teachers Club
- Gaming Guild
- International Food Service Executive Assoc. (IFSEA)
- Latino American Student Organization (LASO)
- Mo'Pride
- Outdoor Recreation
- Pagan Alliance
- Residence Hall Association
- Resident Assistant Association
- Society of Manufacturing Engineers (SME)
- Sports, Nutrition, Fitness Management
- Student Nurses Association
- Writers Club

**Organizations:**

- Arcadian (MSC Yearbook)
- MOVE: Mustang Outreach & Volunteer Efforts (Community Service)
- Student Government Organization
- *The Chimes* (Student Newspaper)
- Theater Department
- WCVM Media (MSC Radio)

**Live on a university campus alongside American students**

- Mandatory on-campus dormitories as part of your program to supplement your learning and help you acclimate to U.S. college life
- Coed dormitories, with single-gender rooms
- Residence Advisor assigned to each floor for activity coordination and housing support
- Residence Hall Director assigned to each dormitory
- Meal plan included for use in Morrisville State College's multiple dining facilities
- Beds, dressers and desks are included
- Separate bathrooms for men and women
- Free cable TV hook up in each dorm room
- Study lounges with computers and printers
- Washers and dryers for laundry provided free of charge

Safety on campus
-24-hour security
-Secure access to dormitories with student ID card and key
-Blue Light emergency phones that connect to the Police throughout campus
-Fire alarm sprinkler system throughout the buildings
-Surveillance cameras and lighted sidewalks to campus
-Access to Center Director's emergency mobile number

# Providing a FOUNDATION FOR SUCCESS



## University Success Seminar

The weekly University Success Seminar is designed to ensure that you unlock your full potential during your first year at ONCAMPUS SUNY, and that you are given the support you need to make the most of your time. You will work through a personal development plan designed specifically for you to build successful strategies in four areas: personal growth, academic advising, social engagement, and professional competencies.

ONCAMPUS SUNY provides you with the skills needed for success, including thinking critically, conducting research, and communicating effectively. With ONCAMPUS SUNY you will benefit from the extra support of an English language curriculum specifically designed to complement your academic coursework, giving you the tools you will need to master your studies completely. Alongside a reinforced curriculum, you will have the opportunity to explore various fields of study and career paths. You will have the freedom to take classes that explore various subjects alongside those which are required for completion of your degree.

### What will you study?

SEMESTER 1	SEMESTER 2
<b>Academic Classes</b> <ul style="list-style-type: none"><li>• 1 Writing Class</li><li>• 1 Mathematics Class</li><li>• 2 General Education Requirement Classes</li><li>• First Year Experience</li></ul>	<b>Academic Classes</b> <ul style="list-style-type: none"><li>• 1 Writing Class</li><li>• 1 Mathematics Class</li><li>• 4 General Education Requirement Classes</li></ul>
<b>Supplemental Support</b> <ul style="list-style-type: none"><li>• TOEFL Preparation (2 hours/week)</li><li>• English for Academic Purposes (4 hours/week)</li><li>• English for Specific Purposes (2 hours/week)</li></ul>	<b>Supplemental Support</b> <ul style="list-style-type: none"><li>• TOEFL Preparation (2 hours/week)</li><li>• English for Academic Purposes (4 hours/week)</li><li>• English for Specific Purposes (2 hours/week)</li></ul>
<b>University Success Seminar</b> (1 hour/ week)	<b>University Success Seminar</b> (1 hour/ week)



### Semester 1 General Education Requirements

COURSE	
1	Human Biology (Lecture and Lab)
2	Introduction to Visual Arts -or- Architecture: Prehistory to 1800

### Semester 2 General Education Requirements

COURSE	
1	Renewable Energy Resources -or- Topics in Contemporary Biology -or- Introductory Physics 1 (Lecture & Lab) -or- Basic Chemistry (Lecture & Lab)
2	Introduction to Psychology
3	Introduction to World Geography
4	Introduction to Visual Arts -or- Theories of Interpersonal Communication -or- Play Production



“I credit Morrisville’s internship opportunities that landed me five job offers when I graduated.”

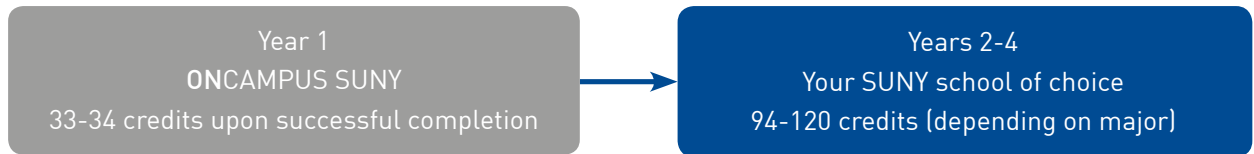
NAME	Kimani Smith
NATIONALITY	Jamaican
MAJOR	Entrepreneurship and Small Business Management B.A.

# Your route to a University Degree

**ONCAMPUS SUNY** offers you the flexibility to choose the courses you want to study. Whether you already know your chosen field of study or are still undecided, our experienced staff will help you with the course selection process to start you on the right path to your degree. As part of your **ONCAMPUS** program, you will have the option to choose from a selection of courses that fulfill the State University of New York's General Education Requirements each semester.

## What are General Education Requirements?

As part of SUNY's mission to cultivate students knowledgeable in multiple fields, students attending a SUNY school are required as part of their Bachelor's degree to complete General Education Requirement courses. As an **ONCAMPUS SUNY** student you will have the opportunity to fulfill all of the General Education Requirements during the **ONCAMPUS** program, so that when you progress, you can start immediately with your major courses! These credits will transfer with you to any SUNY school.





**Semester 1 General Education Requirements to be completed**

Course	General Education Requirements completed
Introduction to College Writing -or- Composition and Research	Basic Communication
Mathematics as advised	Mathematics
Human Biology (Lecture and Lab)	Natural Science
Introduction to Visual Arts -or- Architecture: Prehistory to 1800	Arts
First Year Experience	Freshman Course

**Semester 2 General Education Requirements to be completed**

Course	General Education Requirements completed
Introduction to College Writing -or- Composition and Research -or- Writing about Literature	Basic Communication/Humanities
Mathematics as advised	Mathematics
Renewable Energy Resources -or- Topics in Contemporary Biology -or- Introductory Physics 1 (Lecture & Lab) -or- Basic Chemistry (Lecture & Lab)	Natural Science
Introduction to Psychology	Social Sciences
Introduction to World Geography	Other World Civilization
Introduction to Visual Arts -or- Theories of Interpersonal Communication -or- Play Production	Arts/Humanities



NAME  
Cassandra Edmondson

---

NATIONALITY  
Canadian

---

MAJOR  
Human Performance and Health Promotion B.S.

“Coming to Morrisville State College I looked forward to the small campus atmosphere. In the Human Performance and Health Promotion program here I found that the smaller class sizes were perfect. In this program, I was able to have lots of hands on experience which made a tremendous impact towards getting me prepared for life outside of Morrisville.”



Start your bachelor's degree at  
**MORRISVILLE STATE COLLEGE—**  
finish at the university that is right for you

We have two goals for each of the students we serve: to prepare you to succeed no matter what you choose to study, and to help you determine—and transfer—to the school that is right for you. With 64 different SUNY campuses and more than 5,000 programs of study, determining which school and campus is the best fit can be a challenge for any university-bound student. **ONCAMPUS SUNY** makes it easy for you, providing the preparation, guidance and first-year courses that are the foundation for U.S. academic success.

**ONCAMPUS SUNY** helps you with:

- A 4-step University Transfer Advising process
- College visits
- College fairs
- Application support
- Guidance on final decision

**ONCAMPUS SUNY's** University Transfer Advising provides a step-by-step approach to help you understand your learning interests and goals. It will help you explore other SUNY campuses that are the best match for you, assist you with the application process and help you make the final decision on which school is best for you. In addition to the services offered by **ONCAMPUS SUNY**, students transferring to MSC will also benefit from MSC college-wide transfer counseling.





**ONCAMPUS SUNY's  
UNIVERSITY TRANSFER ADVISING 4-STEP PROCESS:**

One-on-one sessions with your University Transfer Advisor

**STEP 1 - INDIVIDUAL ASSESSMENT**

- Evaluate your aspirations, ideal environment, social interests, etc.
- Review your intended field of study or major
- Select a course plan to achieve your progression goals

**STEP 1b - ONE ON ONE**

- Initial evaluation
- Guided self-assessment

**STEP 2 - UNIVERSITY RESEARCH**

- Review university types, styles, location and selectivity
  - Visit local schools and partner universities
  - Attend college fairs
- Select and apply to at least 3-5 "best fit" schools

**STEP 2b - ONE ON ONE**

- Review of "best fit" institutions
- Short list of universities for application stage

**STEP 3 - APPLICATION PROCESS**

- Participate in essay writing workshops
- Complete applications
- Collect official transcripts, official test scores, letters of recommendation and other application requirements

**STEP 3b - ONE ON ONE**

- Collecting Materials
- Progress tracking & submitting applications

**STEP 4 - MAKING THE FINAL DECISION**

- Receive acceptance letters
- Select institution for progression into year 2
- Research scholarship opportunities

**STEP 4b - ONE ON ONE**

- Review of acceptances
- Transfer logistics



# Why choose **ONCAMPUS SUNY?**

## Program Details

**Length of program:**  
2 semesters

**English Level:**  
A minimum level of English equivalent to 55 TOEFL iBT or IELTS 5.0

**Academic requirements:**  
Admission is subject to completion of high school with good grades.  
Please contact [admissions@oncampususa.com](mailto:admissions@oncampususa.com) for further details.

**Minimum age:**  
17 years of age. If under 18, a student's parents are required to sign a housing guarantee.

**Hours per week:**  
Up to 29

**Requirements for progression:**  
These vary dependent on the requirements of the institution to which you are applying.

## Program Dates

START	SEMESTER 1	SEMESTER 2
Fall 2015	August 14 to December 14, 2015	January 8 to May 13, 2016
Spring 2016	January 17 to May 13, 2016*	May 16 to August 12, 2016**†

\*Please check **ONCAMPUS SUNY** website for updated dates.

†This summer semester is for students beginning in January only

## Program Fees\*\*

ANNUAL FEES (2 SEMESTERS)	
Tuition fee	\$25,000
Housing & dining fees	\$14,910
Additional fees	\$1,665
Medical insurance	\$1,030
Registration fee	\$100
<b>Total cost for the year</b>	<b>\$42,705</b>

\*\*At time of printing, these fees reflect the 2014-2015 fees. For most up-to-date fee details, please check the **ONCAMPUS SUNY** website. Tuition fees include up to 34 credits, and additional support classes as noted on the programs page. All programs are subject to the listed \$100 non-refundable registration fee and a \$2,400 refundable deposit.

## Academic Entry Requirements

Albania	Completion of high school education with Certificate of Maturity with good grades
Angola	Secondary school Certificate (Grade 12) with good grades
Armenia	Certificate of Secondary Education (Mijnakarg Yndhanur Krtoutian Attestat) with good grades
Azerbaijan	Certificate of Secondary Education (Attestat) with good grades
Bahrain	Tawjihiya (General Secondary School Certificate) with good grades
Bangladesh	High school certificate with good grades
Botswana	Cambridge Overseas School Certificate with good grades
Brunei	5 passes at O level
Cambodia	Diploma of Upper Secondary School with good grades, or Baccalaureate with good grades
Cameroon	Baccalaureat or Certificat de Probation with good grades
China	Senior Secondary School Graduation Certificate with good grades
Colombia	Bachillerato or ICFES with good grades



## Academic Entry Requirements (continued)

Gambia	West African School Certificate or Senior School Certificate with good grades
Georgia	Certificate of Secondary Education with good grades
Ghana	WAEC-SSCE with good grades
Hong Kong	HKDSE with good grades
India	CBSE, CICSE, or Central Board with good grades
Indonesia	SMA/K 3 or STTB with good grades
Iran	High School Diploma with good grades
Japan	Upper Secondary School Year 3 (12th grade) with good grades
Jordan	Tawjihi (General Secondary Education Certificate) with good grades
Kazakhstan	Diploma of Completed Secondary Education (Attestat) with good grades
Kenya	East African School Certificate/Cambridge Overseas School Certificate/Kenyan Certificate (KCSE) with good grades
Kuwait	Tawjihiya / Thanawihya / General Secondary School Certificate with good grades
Laos	Baccalaureat with good grades
Lebanon	Lebanese Baccalaureate, or French Baccalaureate, with good grades
Libya	Secondary Education Certificate with good grades
Macau	5 pass grades at O level or completion of higher secondary school with good grades
Malaysia	SPM or UEC with good grades
Mauritius	IGCSE with good grades
Mexico	Bachillerato: showing good grades
Mongolia	School Leaving Certificate with good grades
Myanmar	High school matriculation certificate with good grades
Nepal	Higher Education Certificate with good grades
Nigeria	WAEC-SSCE with good grades
Oman	Tawjihi (General Secondary Education Certificate) with good grades
Pakistan	HSC with good grades
Philippines	High School Diploma with good grades
Qatar	Tawjihiya / Thanawihya / General Secondary School Certificate with good grades

Russia	Certificate of Secondary Education (Grade XI) with good grades
Saudi Arabia	Tawjihi (General Secondary Education Certificate) with good grades
Singapore	Singapore/Cambridge O level/iGCSE with good grades
South Africa	National Senior Certificate with good grades
South Korea	Senior High School 3 or School Leaving Certificate with good grades
Sri Lanka	5 pass grades at O level
Taiwan	Senior High School Year 3 with good grades
Tanzania	East African School Certificate/Cambridge Overseas School Certificate/Certificate of Secondary Education with good grades
Thailand	Mathayom (MAW 6) with good grades
Turkey	High School Year 3 with good grades
Uganda	Ugandan Certificate of Education with good grades
United Arab Emirates	Tawjihiya / Thanawihya / General Secondary School Certificate with good grades or Technical Diploma with good grades
UK	5 passes at GCSE or 2 passes at AS level
Uzbekistan	Diploma of Specialized Secondary Education with good grades
Vietnam	Completion of Year 12 with good grades
Yemen	Secondary School Final Examinations with good scores
Zambia	Zambia School Certificate with good scores
Zimbabwe	5 pass grades at O level
International Curricula - International Baccalaureate (IB)	Successful completion of the IB Diploma
International Curricula - iGCSE	5 pass grades
International Curricula - Canadian High School	Completion of Year 12 with good scores
International Curricula - Australian High School	Completion of Year 12 with good grades
International Curricula - USA High School	High School Diploma (No APs or SATs required) with good grades

Academic entry requirements listed above should be used as a guide only. Suitability for the program will be assessed on a case-by-case basis. Pass grades are considered an overall grade of C or 2.0 GPA and above. If your country is not listed, please contact [admissions@oncampususa.com](mailto:admissions@oncampususa.com).

# STEP BY STEP APPLICATION GUIDE

## STEP ONE

### Apply

Complete the application form online or send to our CEG Admissions team, preferably along with electronic copies of the following:

- Academic Transcripts (along with certified translations if not in English)
- English language test scores
- Copy of passport information page

## STEP TWO

### Receive Offer

Within two working days, students will receive a response—this will either be with a conditional offer, a request for more information or a notification that the application is under further review.

Conditional offers will list any missing required documents and will be sent along with the **Previous Study in the U.S. Form** and the **Financial Declaration Form**.\*

- Send the completed Previous Study in the U.S. form and a copy of any previous or current U.S. visas and related documents electronically to CEG Admissions.
- Send scanned copies of the Financial Declaration Form and proof of funds directly to CEG Admissions.
- Pay the deposit (\$2,300) and registration fee (\$200).
- Fulfill any remaining conditions noted on your conditional offer letter.

\*These forms are required, and an acceptance letter will not be issued unless they are completed.

## STEP THREE

### Acceptance Letter and I-20

- Upon receipt of all required documents and deposit payment, a draft Acceptance Letter will be issued within two working days.
- Review the draft Acceptance Letter to make sure all information is correct and accurate and confirm the shipping address and recipient to which the original of the I-20 document should be sent.
- Once any amendments have been sent to the CEG Admissions team or the Acceptance Letter is confirmed accurate with them, the student will be emailed an electronic copy of the I-20 within one week which will be followed by the original document in the mail.
- Please note that I-20s cannot be issued more than six months before the start of your course. If everything is ready before then, we will issue your I-20 as soon as the six month deadline is passed.

## STEP FOUR

### F-1 Student Visa Application

- Once you have received an electronic copy of your I-20, book a visa appointment at your local U.S. Embassy and collect all the required documents.
- Pay SEVIS fee online.

Please see the next page for tips on preparing for your visa interview.

## STEP FIVE

### Arrival at ONCAMPUS SUNY

- A pre-arrival handbook will be sent along with the electronic copy of the I-20 to prepare students for their arrival in New York.
- Students will also receive a housing form that must be completed and sent to the Student Recruitment and Support Officer at ONCAMPUS SUNY.
- Students must provide arrival details to CEG Admissions and should arrive before the program start date.

### Where to Apply

**Web:**  
[www.oncampususa.com/apply](http://www.oncampususa.com/apply)

**Email:**  
[admissions@oncampususa.com](mailto:admissions@oncampususa.com)

**Phone:** +44 1223 345698  
**Fax:** +44 1223 346181

### How to Pay

**Make easy international payments online at [OnCampus.peertransfer.com](http://OnCampus.peertransfer.com)**

### ONCAMPUS SUNY Contact Details

ONCAMPUS SUNY  
PO Box 901  
Butcher Library – Room 207  
Morrisville State College  
Morrisville, NY 13408

**Phone:** (315) 684 – 6899

# Preparing for your STUDENT VISA INTERVIEW

Should you be admitted to our program, your next step will be to apply for a student visa. As part of your visa application process, you will likely have to attend an in-person visa interview. Below are some tips on how to prepare for this.

Please note: we cannot guarantee a successful outcome to your visa interview. **These points are only meant to advise you on what you can expect during your visa interview.**

## Attend

Failure to attend the interview may result in your application being automatically refused.

## Answer

You should always answer all questions fully and honestly.

## Think

You should think in advance about your program, the documents you provided in your visa application, and your intention to study. The visa official wants to know that you have given serious thought before choosing your course.

## Speak English!

The Visa Official will likely be checking your level of English so always answer in English, not via an interpreter. Practice answers to potential questions and be prepared.

## Ask

Ask for clarification if you do not understand a question to make sure you are providing the information they want.

## Documents to bring

Check the documents required by your specific Embassy at:

<http://www.usembassy.gov>

In general, students are asked to provide the following documentation:

1. Original I-20
2. Proof of payment of SEVIS fee
3. Completed DS-160 form (Non-immigrant visa application)
4. Acceptance letter
5. Passport
6. Academic transcripts (with translations)
7. Financial evidence used for the I-20
8. Passport-sized photograph

Here are tips for some of the types of questions you may be asked:

QUESTION TYPE	TIP
<b>General Information</b> about you, your education, your choice to study in the U.S.	<ul style="list-style-type: none"> <li>• Show that you are a genuine student looking to further your education.</li> <li>• Make it clear that you plan to return to your home country by showing strong ties – give reasons for returning to your home country that are stronger than those for remaining in the USA.</li> </ul>
<b>Intended Course:</b> what you plan to study at ONCAMPUS SUNY, course dates, and program details	<ul style="list-style-type: none"> <li>• Become familiar with the information on our website and/or brochure.</li> <li>• Bring a brochure with you to show the visa official.</li> <li>• Explain why you want to attend your particular program of study. If the consulate official believes you want to remain in the USA after your program, you may not receive a visa.</li> <li>• You should be able to explain how studying in the USA relates to your future professional career in your home country.</li> </ul>
<b>Financial Circumstances:</b> who is paying for your course, what are the fees, etc.	<ul style="list-style-type: none"> <li>• Bring all required financial documents and anything else you may have that helps support your financial status.</li> <li>• If you have been awarded a scholarship, bring a certificate or proof of your award.</li> </ul>
<b>Living in the U.S.:</b> where is the school, where will you be living, etc.	<ul style="list-style-type: none"> <li>• Bring your housing confirmation.</li> <li>• Learn about our location and clearly describe where the school is located within New York State.</li> </ul>

**4. DISCIPLINARY RECORD**

Have you ever been found responsible for a disciplinary violation at any educational institution you have attended, whether related to academic misconduct or behavioral misconduct, that resulted in a disciplinary action? These actions could include, but are not limited to: probation, suspension, removal, dismissal, or expulsion from the institution.

Yes  No

Have you ever been adjudicated guilty or convicted of a felony?

Yes  No

Note that you are not required to answer "yes" to this question, or to provide an explanation, if the criminal adjudication or conviction has been expunged, sealed, annulled, pardoned, destroyed, erased, impounded, or otherwise ordered by a court to be kept confidential.

If you answered "yes" to either or both questions, please attach a separate sheet of paper that gives the approximate date of each incident, explains the circumstances, and reflects on what you learned from the experience. Please note that the application will be subject to further processing.

**5. WHY HAVE YOU CHOSEN ONCAMPUS SUNY? (Mandatory for completion of application - please use a separate sheet of paper if needed)**

Blank lines for writing the answer to question 5.

**6. HOW DID YOU HEAR ABOUT US?**

Please indicate how you heard of this program (Please check)  Agent  Exhibition  Internet  Family  Other (please specify) \_\_\_\_\_

**7. PLEASE LET US KNOW IF YOU HAVE ANY SPECIAL REQUIREMENTS, SO WE MAY DO OUR BEST TO BE OF ASSISTANCE TO YOU.**

Blank lines for writing the answer to question 7.

**8. DECLARATION**

I declare that I am applying to ONCAMPUS SUNY as a genuine student and that the information and supporting evidence and academic documents I have provided are true copies. I understand that by completing and returning this declaration I have read, understood and agreed to the terms and conditions and fees of study at ONCAMPUS SUNY as outlined on the ONCAMPUS SUNY website <http://www.oncampususa.com/en/datesfees/terms/>

If you do not have access to the website or would like a written copy of the terms & conditions, you can request these from ONCAMPUS SUNY Central Admissions at [admissions@oncampususa.com](mailto:admissions@oncampususa.com)

\_\_\_\_\_  
Signature of Applicant Date

\_\_\_\_\_  
Parent or Guardian Signature (If applicant is not the fee payer or is under 18) Date

# ONCAMPUS SUNY APPLICATION FORM

Apply ONLINE at [www.oncampususa.com](http://www.oncampususa.com) or return this form to:  
Admissions Office, Kett House, Station Road  
Cambridge, CB1 2JH, United Kingdom  
Tel: +44 (0)1223 345698 Fax: +44 (0)1223 346181 Email: [admissions@oncampususa.com](mailto:admissions@oncampususa.com)

Incomplete application forms submitted without ALL the supporting documents will delay the decision process.

1. PERSONAL DETAILS			
Title (Mr/Mrs/Miss/Ms etc)			
First name(s)		Family name	
Date of birth (e.g. December 11, 1996)		Gender	
Preferred name		Country of birth	
Nationality (as shown on passport)		Country of permanent residence	
Home address (of student)		Mailing address (if different)	
Zip Code/Postcode	Province/Territory	Zip Code/Postcode	Province/Territory
Country		Country	
Telephone (incl. country code)		Cell phone (incl. country code)	
Student email			
2. PROGRAM DETAILS			
Date you want to start the program	<input type="checkbox"/> Sept <input type="checkbox"/> Jan	Year: <input type="checkbox"/> 2015 <input type="checkbox"/> 2016	
College/University to which you wish to progress			
Major you wish to study (if known)			
Have you ever studied in the U.S. before?	<input type="checkbox"/> Yes	<input type="checkbox"/> No	
3. USE OF AGENTS			
Have you used an educational agent during your application process? <input type="checkbox"/> Yes <input type="checkbox"/> No			
Name of agency (in full):			
Name of contact person at agency:			
Agency address (in full):			
Agent Email:			

## ONCAMPUS SUNY

PO Box 901  
Butcher Library – Room 207  
Morrisville State College  
Morrisville, NY 13408  
Telephone (315) 684 – 6899

ONCAMPUS SUNY is owned and operated by:

### Cambridge Education Group

Kett House, Station Road  
Cambridge CB1 2JH, United Kingdom

### Telephone:

+44 (0) 1223 345698

### Fax:

+44 (0)1223 346181

### Email:

admissions@oncampususa.com

### Web:

www.oncampususa.com

### Facebook:

www.facebook.com/oncampussuny



### Overseas offices:

#### Brazil

+55 (0) 15 998 54 5454  
brasil@ceg-uk.com

#### China

+86 10 5869 0568  
china@ceg-uk.com

#### Hong Kong, Macau, Taiwan

+852 2882 4046  
hongkong@ceg-uk.com

#### Japan

+81 50 5809 9582  
japan@ceg-uk.com

#### Korea

+82 2 2052 1904  
korea@ceg-uk.co.kr

#### Latin America

+52 (1) 81 1778 9091  
latinamerica@ceg-uk.com

#### Nigeria

+234 81 8527 9072  
nigeria@ceg-uk.com

#### Pakistan

+92 345 1444 455  
pakistan@ceg-uk.com

#### Russia

+7 495 223 1348  
russia@ceg-uk.ru

#### South East Asia

+60 (0) 19 790 0236  
southeastasia@ceg-uk.com

#### Vietnam

+84 96 4187 914  
vietnam@ceg-uk.com

Get in touch,  
we would love to hear from you.



ONCAMPUS SUNY is a part of  
Cambridge Education Group

Information in this brochure is correct at time of print on March 2015 but may change in the future. For the most up-to-date details, please check the ONCAMPUS SUNY website. ONCAMPUS SUNY and its host university, Morrisville State College, reserve the right to alter, reschedule or close classes which do not remain viable - students will be informed appropriately.

**ONCAMPUS**  
SUNY



MORRISVILLE  
STATE COLLEGE